

SNOW PLAN UPDATE

Winter 2022-2023

*Environmental Quality & Public Works Committee
October 11, 2022*



LEXINGTON

Presentation Overview

- Snow Season Expense Comparison
- Status of Salt
- Route Rankings
- Service Levels
- Changes to the Snow Plan
- COVID-19 Coordination
- Sidewalk Snow Removal
- Staffing
- Projected Schedule for Plan Finalization

Snow Season Expense Comparison

Fiscal Year	Expense*	Salt Used (Tons)	Salt Price (Per Ton)	Mobilizations Full/Partial***
2018	\$478,743	10,306	\$58.32	12/6
2019	\$349,028	4,215	\$86.44	4/13
2020	\$440,706**	1,745	\$90.87/92.84	2/6
2021	\$930,160	8,038 1,000 rock	\$68.90/70.90	7/2
2022	\$1,025,561	12,610	\$88.99	4/13

* Does not include personnel

** 7,000 tons loaded into W Hickman Barn 2020

***“Typical” winter averages 22 mobilizations per year

Full mobilization = All drivers and all supervisors and may include multiple shifts and days.

Partial mobilization = 1 supervisor and 1 driver or fewer per area.

Salt Supply

Currently on hand → 8,800 tons

Storage Capacity → 8,800 tons total

- **1,800 tons at Old Frankfort Pike**
- **7,000 tons at W Hickman**

FY 2023 budget → \$1,000,964.99

FY23 salt cost → \$114.00/ton (In FY22 \$88.89/ton)





Route Rankings

Rank 1 -- primary arteries in and out of the city. (*Nicholasville Rd, Man O' War Blvd, etc.*)

- 296 lane miles*

Rank 2 -- major connecting streets. (*Lane Allen Rd, Loudon Ave, etc.*)

- 192 lane miles*

Rank 3 -- collector routes. (*Sandersville Rd, Old Todds Rd, etc.*)

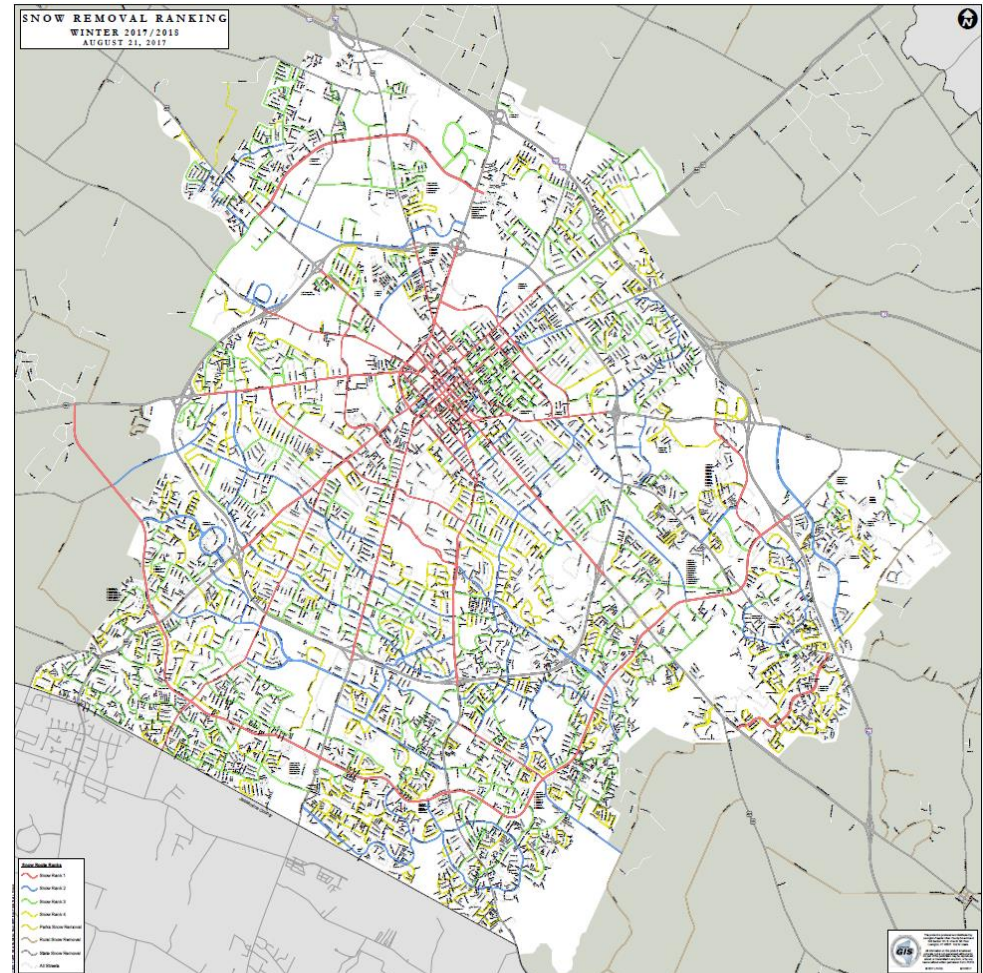
- 356 lane miles*

Rank 4 -- local residential streets, which allow residents access to the main roads (*Dunkirk Dr, Glendover Rd, etc.*)

- 330 lane miles*

*lane miles:

1 mile of a 2-lane road = 2 lane-miles





Service Levels

Level 1 → 1" to 4" of accumulation

- Operate under current plan (Rank 1-4 streets)

Level 2 → 5" to 8" of accumulation

- In addition to the Rank 1-4 routes, we will add unranked residential collector streets that connect to collector streets

Level 3 → 8" of accumulation and above

- In addition to the Rank 1-4 streets, we will attempt to plow as many streets as possible

Changes for the 2022-2023 Season

- Minor route edits to reflect connectivity concerns, and school and public safety access.
- Town Branch Commons to be added to the list of ranked sidewalks.
- Adjustment to contractor routes (replace McGrathiana).

Covid-19 Assistance

- Mutual COVID-19 assistance agreement with KYTC District #7.
- Updated emergency contact information across divisions and stakeholders for rapid internal communication.
- Consensus across divisions and agencies for mutual aid and support in the event of positive tests.
- Commissioner will serve as coordinator of rapid staff reallocation as needed.
- For 2022-2023, streets providing emergency access to certain critical facilities will have a Rank 1E ranking above Rank 1 should staffing become too limited to execute the traditional plan.
- Continued emphasis on social distancing, vaccination, and disinfection of all surfaces among staff to limit the spread and prevent infection.

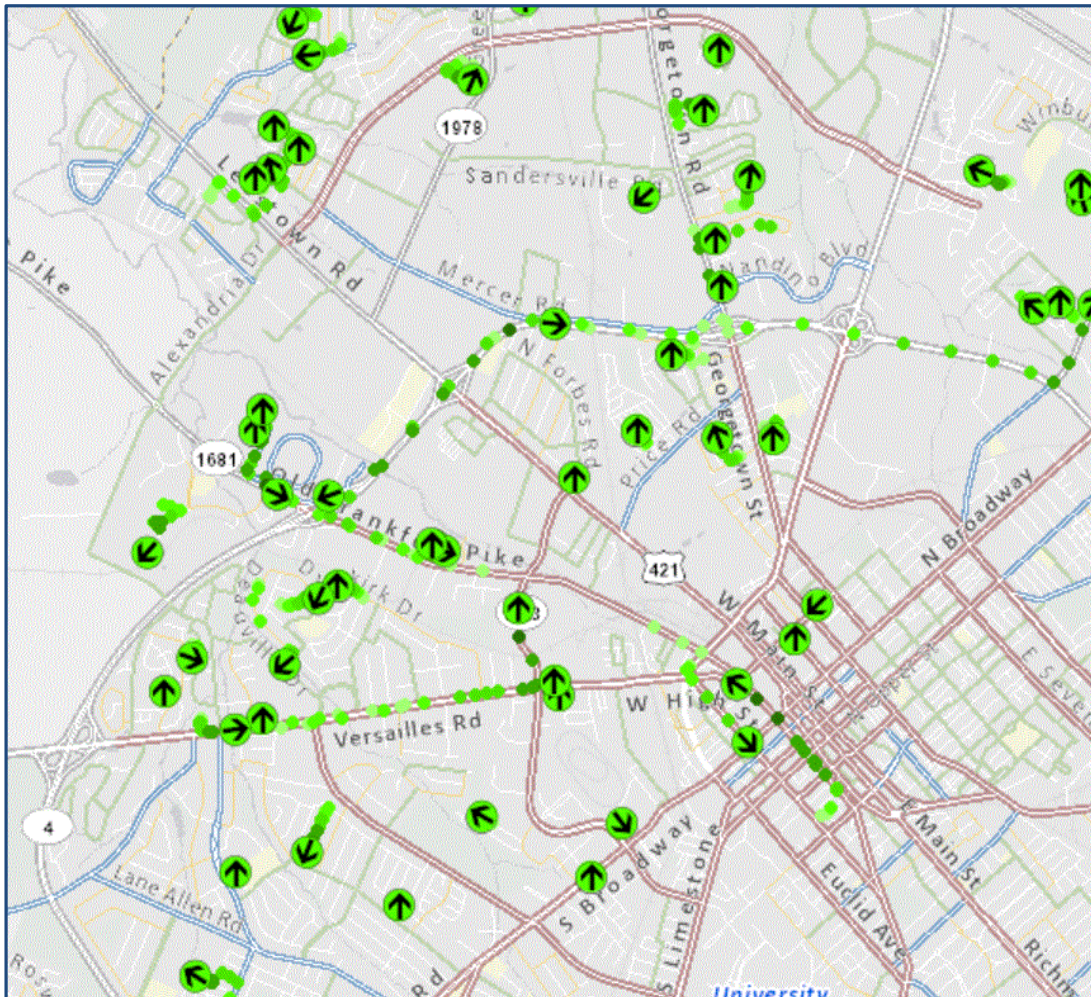


Goals

- Complete Roadway Snow Plan (Rank 1 – 4 routes) within 48 hours of **snow end**.
- Complete Sidewalk Snow Plan (Rank 1 – 4 routes) within 96 hours of **snow end**.

Snow Plow Tracker

<https://maps.lexingtonky.gov/snowresponse>



Legend

Tracking Test

Vehicle Location



Vehicle Trail - 1 minute



Vehicle Trail - 2 minutes



Vehicle Trail - 3 minutes



Vehicle Trail - 4 minutes



Vehicle Trail - 5 minutes



Ranked Snow Routes

Snow Ranking - 72k

Rank 1

Rank 2

Rank 3

Rank 4

Parks Snow Removal

Rural Snow Removal

State Snow Removal

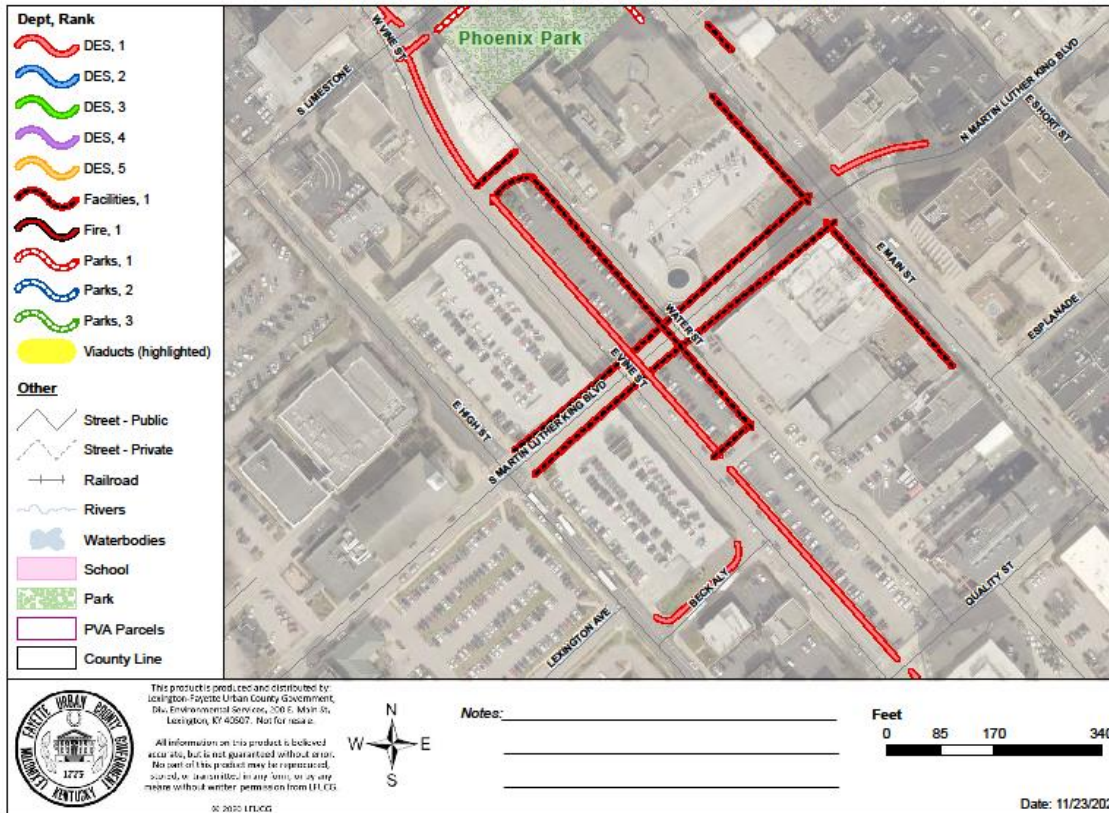
Sidewalk Snow Removal

- Primary execution by combined forces of Environmental Services, Parks, and Facilities.
- Over 80 miles of sidewalks serviced with full execution of the plan.



Sidewalk Snow Removal

Town Branch Commons Sidewalk Snow Removal



Sidewalk clearing begins after snow stops. Must coordinate timing with road crews to minimize re-coverage after clearance.



Sidewalk Snow Removal

Rank examples	Length
Rank 1 <ul style="list-style-type: none">• Overpasses and underpasses• City-owned facilities• High density city-maintained sidewalks/crosswalks• Service open Parks facilities	14.8 Sidewalk Miles
Rank 2 <ul style="list-style-type: none">• Designated city-maintained sidewalks on arterials and collectors in high density areas (i.e., Man O' War, Wellington Way, Wilson Downing, etc.)• Service closed Parks facilities & near bus stops• School routes (school closed)	35.7 Sidewalk Miles
Rank 3 <ul style="list-style-type: none">• Perimeter sidewalks of Parks - High density areas	16.6 Sidewalk Miles
Rank 4 <ul style="list-style-type: none">• City-owned parcels in lower density residential areas (WQ lots, greenways);• Perimeter sidewalks of Parks - Low density areas	15.4 Sidewalk Miles

Staffing

- **Streets and Roads** -- authorized strength: 68 CDL positions.
 - 4 used as loaders, 5 as mechanics = 43 drivers split over 2 shifts.
 - Currently 16 vacancies
- **Water Quality** – authorized strength: 29 CDL positions. Not all available to drive at the same time in case of sewer line breaks.
- **Environmental Services** – authorized strength: 5 CDL positions and 6 general labor positions for clearing LFUCG sidewalks.
- **Red River Contractor** - 5 contractor drivers and plows.
- **Water Quality, Parks, Waste Management and Environmental Services** – drivers (if needed).



Plan Finalization Schedule

- **Stakeholder Meeting** – September 9, 2022
(LexTran, FCPS, state, etc.)
- **EQ&PW Committee Update** – October 11, 2022
- **Post to Webpage** – October 18, 2022

QUESTIONS / COMMENTS?

