

Proposal for Engineering Services – Haley Pike Cap Restoration

RFP #1-2015

MASTER

Prepared for:

**Lexington-Fayette Urban County Government
Room 338, Government Center
200 East Main Street
Lexington, Kentucky 40507**

March 9, 2015



2456 Fortune Drive, Suite 170
Lexington, KY 40509
(877) 633-5520

Table of Contents

1	CORNERSTONE QUALIFICATIONS	1
1.1	CORNERSTONE BACKGROUND	1
1.2	CORNERSTONE RESOURCES	2
1.3	CORNERSTONE PROJECT EXPERIENCE.....	2
2	PROJECT TEAM ROLES AND QUALIFICATIONS.....	7
2.1	LOCAL PRESENCE	9
3	PROJECT APPROACH.....	10
3.1	DESIGN SERVICES.....	10
3.1.1	<i>Review Previous Design Drawings and Specifications</i>	<i>10</i>
3.1.2	<i>Observe Current Conditions and Design Corrections.....</i>	<i>10</i>
3.1.3	<i>Update Drawings.....</i>	<i>10</i>
3.1.4	<i>Design and Specify Temporary Irrigation Methods.....</i>	<i>10</i>
3.1.5	<i>Prepare Bid Specifications.....</i>	<i>11</i>
3.1.6	<i>Prepare Engineer’s Estimate</i>	<i>11</i>
3.1.7	<i>Assist in Responding to Bidder Questions.....</i>	<i>11</i>
3.1.8	<i>Participate in Bid Evaluation and Selection</i>	<i>11</i>
3.2	CONSTRUCTION ADMINISTRATION.....	11
3.2.1	<i>Conduct a Pre-Construction Conference</i>	<i>11</i>
3.2.2	<i>Review all Shop Drawings and Documents.....</i>	<i>12</i>
3.2.3	<i>Review contractor’s Payment Request</i>	<i>12</i>
3.2.4	<i>Respond to Contractor’s Request for Information.....</i>	<i>12</i>
3.2.5	<i>Prepare Change Orders and Submit to LFUCG for Approval.....</i>	<i>12</i>
3.2.6	<i>Conduct Construction Progress Meetings and Provide Written Minutes</i>	<i>12</i>
3.2.7	<i>Perform Site Visits by a Project Engineer to Gauge Progress and Resolve Technical Issues</i>	<i>13</i>
3.2.8	<i>Perform Necessary Project Management Activities and Communications</i>	<i>13</i>
3.2.9	<i>Prepare As-Built Drawings and Final Construction Document</i>	<i>13</i>
3.2.10	<i>Provide LFUCG with Document Containing All Items Relative to Project.....</i>	<i>13</i>
3.3	CONSTRUCTION QUALITY ASSURANCE	13
3.3.1	<i>Assist the contract on interpreting items in the Plans and Specifications.....</i>	<i>13</i>
3.3.2	<i>Conduct All Required Testing</i>	<i>14</i>

3.3.3	<i>Issue Inspection Reports for Each Site Visit</i>	14
3.3.4	<i>Assist Contractor in Preparing Requests for Payment</i>	14
3.3.5	<i>Develop a Punch list</i>	14
3.3.6	<i>Assist with Final Project Inspection</i>	14
3.4	ADDITIONAL ENGINEERING SERVICES	15
4	MWDBE PARTICIPATION	16
5	PROPOSED FEES	17
5.1	ADDITIONAL ENGINEERING SERVICES	18
6	INVOICING FOR SERVICES	19
7	ADDITIONAL RELEVANT INFORMATION	20
7.1	GENERAL PROVISIONS	20
7.2	RFP ADDENDA	20

APPENDICES

APPENDIX A CORNERSTONE SOQ

APPENDIX B RESUMES

APPENDIX C RATE SCHEDULE

APPENDIX D MWDBE PARTICIPATION FORM

APPENDIX E GENERAL PROVISIONS AND INSURANCE FORMS

APPENDIX F RFP ADDENDA

1 CORNERSTONE QUALIFICATIONS

Cornerstone Environmental Group (Cornerstone) is a private professional services consulting firm specializing in environmental services. With a staff of 180 employees in 25 offices throughout North America, we are a limited liability company incorporated in the state of New York and licensed to operate in the Commonwealth of Kentucky and throughout the country.

*Building lifetime relationships
with our clients and
employees*

1.1 Cornerstone Background

Cornerstone was founded in 2006 and is led and staffed by industry leaders who have helped to develop and shape environmental, waste and energy services technology over the past 40 years. Our mission is to provide the highest quality environmental engineering, field services, construction management, and professional services, from project conception through operations. Cornerstone provides civil engineering, design, hydrogeology, air compliance and monitoring, construction, and field services.

Cornerstone Mission Statement

Cornerstone's team of professionals includes licensed engineers, geologists and scientists nationally recognized for their expertise in the field of solid waste, fully encompassing each aspect of the following list of specialties:

- Environmental (groundwater, surface water, gas) monitoring programs
- Statistical analysis of environmental data
- Environmental reports to federal and state regulatory agencies
- Remedial Investigation
- Feasibility Studies
- Air Compliance and Monitoring
- Landfill Design
- Environmental Permitting
- Construction Phase Services
- Landfill Operations Consulting
- Institutional Issues

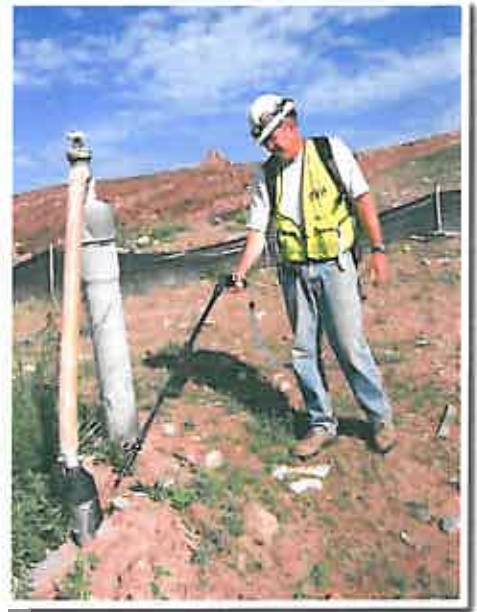
A corporate Statement of Qualifications (SOQ) is provided in Appendix A to show our wide range of services.

1.2 Cornerstone Resources

Cornerstone understands and has the capability to provide the cap restoration engineering services that Lexington-Fayette Urban County Government requires for Haley Pike. We provide design, construction administration and construction quality assurance services for several solid waste landfills across North America, and our Lexington, Kentucky based office specifically provides services to numerous sites in Kentucky, Indiana, Tennessee, and Michigan.

Cornerstone will manage and lead your cap restoration project through our Lexington, Kentucky office. We will certainly maintain the high standards we set for our work and look forward to building a strong, long-term relationship with you.

1.3 Cornerstone Project Experience



Cornerstone provides environmental engineering services to public and private clients nationwide, and has the proven experience to meet the design, construction administration and quality assurance needs for the Haley Pike Landfill facility. Other similar projects are listed here for your review.

Thoroughbred Disposal Landfill

Client: Thoroughbred Disposal Services, LLC

Dates: 2012-Present

Location: Lexington, KY

Cornerstone currently provides engineering and environmental monitoring services for Thoroughbred Disposal Services' landfill located in Lexington, Kentucky. Projects include quarterly monitoring of a network of seven groundwater monitoring wells and four stream sample locations; statistical analysis of monitoring data and preparation of quarterly reports for submittal to the Kentucky Division of Waste Management (KDWM); collection of samples from two Kentucky Pollutant Discharge Elimination System (KPDES) outfall locations and discharge monitoring report (DMR) submittal through NetDMR; and construction and demolition debris (CDD) cell construction oversight. Construction oversight of cap or liner construction includes clay and/or geosynthetics cap or liner materials, drainage layers, leachate collection lines, protective covers, vegetative covers, drainage swales and berms, and gas vents as appropriate and as required by the permit or by Kentucky's administrative regulations. All construction activities are documented in writing and via photographs. The documents are compiled into a Construction Progress Report, certified by a professional engineer licensed to practice in Kentucky, and submitted to the client and to the regulatory authority.

Central Kentucky Landfill

Client: Waste Services of the Bluegrass, Inc.

Dates: 1999-Present

Location: Georgetown, KY

Cornerstone personnel have provided services for Waste Services of the Bluegrass for over a decade. These include cell construction oversight; quarterly and semi-annual groundwater monitoring at wells located at both the contained and CDD facility landfills; statistical analysis of monitoring data and preparation of routine monitoring reports for submittal to the KDWM; KPDES outfall sampling and reporting to Kentucky Division of Water (KDOW) through NetDMR; KPDES permitting; horizontal expansion permitting for expansion of the contained landfill; preparation of a Spill Prevention, Control, and Countermeasure (SPCC) plan, a Best Management Plan (BMP), and a Groundwater Protection Plan (GPP) for the facility; and drilling oversight and installation of groundwater monitoring wells. Construction oversight of cap or liner construction includes clay and/or geosynthetics cap or liner materials, drainage layers, leachate collection lines, protective covers, vegetative covers, drainage swales and berms, and gas vents as appropriate and as required by the permit or by Kentucky's administrative regulations. All construction activities are documented in writing and via photographs. The documents are compiled into a Construction Progress Report, certified by a professional engineer licensed to practice in Kentucky, and submitted to the client and to the regulatory authority.

Big Run Landfill

Client: EnviroSolutions, Inc.

Dates: 2012-Present

Location: Ashland, KY

Cornerstone currently provides services for Big Run Landfill located near Ashland, Kentucky. Services include construction oversight of final cap, cell, and gas system construction; overseeing mine void filling, quarterly groundwater monitoring of wells; statistical analysis of monitoring data and preparation of routine monitoring reports for submittal to the KDWM; KPDES outfall sampling and reporting to KDOW through NetDMR; KPDES permitting; preparation of a Spill Prevention, Control, and Countermeasure (SPCC) plan, a Best Management Plan (BMP), and a Groundwater Protection Plan (GPP) for the facility. Construction oversight of cap or liner construction includes clay and/or geosynthetics cap or liner materials, drainage layers, leachate collection lines, protective covers, vegetative covers, drainage swales and berms, and gas vents as appropriate and as required by the permit or by Kentucky's administrative regulations. All construction activities are documented in writing and via photographs. The documents are compiled into a Construction Progress Report, certified by a professional engineer licensed to practice in Kentucky, and submitted to the client and to the regulatory authority.

Morehead Landfill

Client: Advanced Disposal Services

Dates: 2010-Present

Location: Morehead, KY

Cornerstone personnel provide environmental monitoring services for Advanced Disposal Services' Morehead landfill. Cornerstone currently conducts quarterly groundwater and surface water monitoring; split-sampling as needed with KDWM inspectors; statistical analysis of groundwater data using Sanitas statistical software; monthly KPDES sampling and reporting via NetDMR; quarterly methane monitoring of perimeter points; monthly leachate sampling and reporting for the facility industrial discharge permit; and KPDES permitting.

Blue Ridge Landfill

Client: Advanced Disposal Services

Dates: 2010-Present

Location: Irvine, KY

Advanced Disposal Services has utilized Cornerstone personnel for environmental monitoring and reporting since 2010. Cornerstone has provided services such as quarterly groundwater and surface water monitoring; statistical analysis using Sanitas statistical

software and quarterly reporting to the KDWM; monthly KPDES sampling and DMR submittal on NetDMR; monthly leachate sampling and reporting for the facility industrial discharge permit; and KPDES permitting.

Waste Path Sanitary Landfill

Client: Waste Path Sanitary Landfill, LLC

Dates: 2003-Present

Location: Calvert City, KY

Cornerstone personnel have provided services for Waste Path Sanitary Landfill since 2003. These services include statistical analysis of quarterly groundwater data using DUMPStat statistical software; preparation of a GAP for submittal to the KDWM; characterization sampling of monitoring wells for assessment activities; permitting and design for a horizontal expansion of the contained landfill; construction oversight of new waste cells. Construction oversight of cap or liner construction includes clay and/or geosynthetics cap or liner materials, drainage layers, leachate collection lines, protective covers, vegetative covers, drainage swales and berms, and gas vents as appropriate and as required by the permit or by Kentucky's administrative regulations. All construction activities are documented in writing and via photographs. The documents are compiled into a Construction Progress Report, certified by a professional engineer licensed to practice in Kentucky, and submitted to the client and to the regulatory authority.

Glasgow Regional Landfill

Client: City of Glasgow, Kentucky

Dates: 2013-Present

Location: Glasgow, KY

Cornerstone personnel have provided services pertaining to design, construction oversight, and operations and maintenance of a methane gas collection system.

Pendleton County Landfill

Client: Rumpke of Kentucky

Dates: 2000-Present

Location: Butler, KY

Rumpke of Kentucky has utilized Cornerstone personnel for engineering and environmental monitoring services from 2000 to the present. Services provided include quarterly monitoring of a network of 14 groundwater wells, five surface water locations, and two seeps; low-flow purging using QED bladder pumps and controller; statistical analysis of groundwater data utilizing DUMPStat statistical software and preparation of quarterly monitoring reports for submittal to the KDWM; quarterly methane monitoring of perimeter points using a Landtec GEM 2000 meter and preparation of methane reports; and horizontal expansion permitting for expansion of the contained landfill.

Montgomery County Landfill

Client: Rumpke of Kentucky

Location: Mount Sterling, KY

Dates: 2000-Present

Cornerstone personnel have provided environmental monitoring and reporting services for Rumpke of Kentucky's Montgomery County landfill since 2000. Services provided include quarterly monitoring of a network of 24 groundwater wells using low-flow purging techniques; quarterly monitoring of nine surface water sample points; statistical analysis of groundwater data utilizing DUMPStat statistical software and preparation of quarterly monitoring reports for submittal to the KDWM; quarterly methane monitoring of perimeter points and occupied structures and preparation of methane reports; preparation of Groundwater Assessment Plans (GAP) and Groundwater Assessment Reports (GAR); and drilling oversight and installation of groundwater monitoring wells.



2 PROJECT TEAM ROLES AND QUALIFICATIONS

Cornerstone has qualified staff throughout the country; however, our Lexington, Kentucky office will provide services for the Haley Pike Landfill cap restoration project.

Cornerstone's Lexington office is sufficiently staffed with engineers, field technicians, and a professional geologist to provide support for all aspects of the project. Although Cornerstone is a fairly young company, Cornerstone personnel have been providing services in Kentucky for several decades. For the Haley Pike cap restoration project, Jim Wade will be the overall manager, coordinating with Lexington-Fayette Urban County Government and involving project team members as necessary. Key members of the project team are:

- Jim Wade, P.E., Project Manager
- Randall Russell, P.E., Quality Control Manager
- James Walker, P.E., Senior Engineering Design
- Jane Gregg, E.I.T., Staff Engineer
- Blake Gies, E.I.T., Staff Engineer

Brief biographical sketches are below, and full resumes are provided in Appendix B for full review.



Jim Wade, P.E. Mr. Jim Wade is a Client Manager with over 30 years of experience managing complex engineering projects from both a design and a regulatory perspective. He is a licensed Professional Engineer in Kentucky and has a thorough knowledge of the solid waste industry, regulations, and zoning requirements in Kentucky as they relate to solid waste hauling, material recovery, composting, and disposal facilities. Jim is also a licensed landfill manager. His combined operational, compliance, and engineering experience makes him an exceptional individual for management level project positions in the solid waste industry.

As project team lead, Jim will be the client liaison and responsible for overall management of the project, including cost control and invoicing. Jim will coordinate monitoring events and manage field personnel to ensure that sampling is conducted within appropriate timeframes and for the appropriate parameters. He will review laboratory analytical data upon delivery for errors and consistency and to make certain that effluent limitations are met. Jim will conduct statistical analysis on the monitoring data and prepare required

groundwater and surface water monitoring reports including potentiometric surface maps for submittal to the KDWM. He will submit KPDES monitoring data using NetDMR as required by the KDOW, and can provide other hydrogeological services as needed.



Randall Russell, P.E. Mr. Randall Russell is a Professional Engineer with 33 years of experience in various aspects of project, facility, and corporate management experience in the construction, engineering consulting, and solid waste industries. In addition Mr. Russell has experience in design of storm and sanitary sewers, urban planning, mine reclamation, surveying, and extensive experience in the hydraulic analysis, design, bid document and construction of water distribution systems. Along with the design phases of the various projects, experience has been gained with administering Kentucky Community Development Block Grant programs, USDA Rural Development, and other governmental agencies programs

As Quality Control Manager Randall will provide input during the design and analyses portions of the project, and will peer review the deliverables to ensure internal quality control goals are achieved.



James Walker, P.E. Mr. James Walker has nearly 40 years of experience in civil and environmental engineering design, including more than 25 years full time involvement with the design, permitting, and construction of over 50 solid waste disposal facilities in Ohio and Michigan. This experience includes detailed design and permitting of greenfield sites, lateral expansions, vertical expansions, and numerous conceptual expansion designs, alterations, and permit modifications.

Jim will be our project's senior design engineer. He will oversee all technical aspects of the project, and will directly supervise all staff-level personnel as they perform their individual tasks.

Jane Gregg, E.I.T. Ms. Jane Gregg is a civil and environmental engineer with professional experience in landfill cell and gas collection and control system design, geotechnical analysis, environmental permitting and reporting, statistical analysis, and construction quality assurance. Her project work has included preparation of feasibility reports, cost estimates, permit applications, operations and maintenance manuals, engineering drawings and reports, and construction oversight.

For this project, Jane will provide engineering support for the project as needed and in particular for the hydrologic modeling and analyses phases of the project, working under the direction of James Walker.

Blake Gies, E.I.T. Mr. Blake Gies holds the position of Engineer 1 with the primary responsibility of providing engineering support to various Project Managers and Project Engineers. He performs or assists with field surveying; environmental sampling; CAD file production; construction quality assurance; and report generation.

Also providing engineering support for this project, Blake will perform the field observations and documentation and assist in preparation of the construction certification report under the direction of James Walker.

2.1 Local Presence

As discussed above, all of our Haley Pike monitoring project team members have the qualifications and experience required to provide exceptional service. Also important to the success of this project is the team's proximity to the Haley Pike site. The site is located approximately ten miles east of Cornerstone's Lexington office, which will make nearly every member of our team readily available to the Lexington-Fayette Urban County Government throughout the duration of this contract.



3 PROJECT APPROACH

For the engineering services requested at Haley Pike, the scope of work would include the following tasks, which are described in more detail in subsections below:

- Identify areas of erosion that need to be addressed and repair
- Specify erosion and sediment controls
- Administer construction activities through seeding and irrigation
- Perform Quality Assurance/Quality Control
- Follow up inspection and warranty work



3.1 Design Services

3.1.1 Review Previous Design Drawings and Specifications

Cornerstone will review previous documents to determine how the cap performance may be improved with respect to managing surface water runoff and the establishment of adequate vegetative cover to meet the closure and closure care requirements of Kentucky's Administrative Regulations.

3.1.2 Observe Current Conditions and Design Corrections

Areas requiring repair for cap restoration will be photographed as "Before" documentation and mapped in the field to assist in preparing updated design drawings and specifications. Any obvious causes of failure in the previous cap design and/or construction will be particularly noted.

3.1.3 Update Drawings

Cornerstone will prepare updated drawings for improved cap performance. The drawing set will be sufficiently detailed so as to allow LFUCG to solicit bids for construction. Cornerstone will utilize the software package Civil 3D to prepare the design drawing.

3.1.4 Design and Specify Temporary Irrigation Methods

Irrigation methods will be implemented through a typical dry autumn season. Cornerstone anticipates using the existing sediment control pond(s) as the water source. Should LFUCG prefer another source, that fact should be made clear at the project kickoff meeting. Irrigation should not be necessary after mid-November.

3.1.5 Prepare Bid Specifications

Cornerstone will prepare bid specifications to accompany the design plans. The specifications will be sufficiently detailed so as to allow LFUCG to solicit bids for construction. We anticipate using standard EJCDC documents for the technical portions of the specifications unless LFUCG has another preference.

3.1.6 Prepare Engineer's Estimate

Cornerstone will prepare an engineering estimate for cap restoration work. The estimate will be detailed by line item with estimated quantities, and with unit prices consistent with our experience. Engineering and administrative costs will be estimated and added to the construction cost estimate to arrive at a total project cost estimate.

3.1.7 Assist in Responding to Bidder Questions

To get a response to their questions, bidders will be required to submit questions in writing (e-mail preferred) by a deadline to be determined at a later date. Responses to all questions will be distributed via bid addenda to all plan holders. Bidders will be required to acknowledge all addenda in their bids. Responses to questions which are not included in an official addendum may not be relied upon.

3.1.8 Participate in Bid Evaluation and Selection

Bid evaluation and selection bids will be determined to be responsive or non-responsive based upon whether or not the bid requirements are met. Responsive bids will be further evaluated with respect to cost, prior experience, project references, and any other criteria to be established jointly by LFUCG and Cornerstone. A certified bid tabulation will be prepared to be made part of the permanent record. Cornerstone will provide a written recommendation to LFUCG with respect to contractor selection.

3.2 Construction Administration

3.2.1 Conduct a Pre-Construction Conference

Cornerstone will meet on site with the successful construction contractor prior to beginning construction. An agenda for the meeting will be prepared and submitted to LFUCG for review prior to the meeting. The agenda will include at a minimum, but not be limited to: project schedule, project cost, project responsibilities, chain of command, progress meetings, pay applications, and the process for change orders.

3.2.2 Review all Shop Drawings and Documents

To ensure the project design requirements will be achieved Cornerstone will review all shop drawings and documents. A log will be maintained showing receipt of all submittals, when the submittal was returned to the contractor, and the disposition of the review (approved, approved with corrections, or denied). Any submittal which is denied will require resubmittal and a second review.

3.2.3 Review contractor's Payment Request

Cornerstone will perform a review of contractor's payment requests and process the application within seven (7) calendar days of receipt. Claimed quantities will be checked for accuracy and unit costs will be compared to the accepted bid prices. Unacceptable pay applications will be returned to the contractor for amendment. A recommendation to pay will be made in writing to LFUCG when a pay application is acceptable.

3.2.4 Respond to Contractor's Request for Information

Cornerstone will respond to the contractor's requests for information in a timely fashion. Requests are preferred in writing, and preferably via e-mail, although minor issues may be resolved verbally. Verbal issues will be documented in writing either via e-mail or a file memorandum in order to be made a part of the permanent record.

3.2.5 Prepare Change Orders and Submit to LFUCG for Approval

When warranted Cornerstone will prepare change orders and submit to LFUCG for approval. The contractor will be advised during the pre-construction meeting that proceeding with change order work without authorization from either LFUCG or the Cornerstone Project Manager is at the contractor's sole risk.

3.2.6 Conduct Construction Progress Meetings and Provide Written Minutes

Progress meetings will be held once monthly unless another frequency is warranted to review the project schedule and budget. Pay applications and/or change orders may be processed. The dates for progress meetings will be determined during the pre-construction meeting, and Cornerstone will provide written minutes of the meetings to all attendees.

3.2.7 Perform Site Visits by a Project Engineer to Gauge Progress and Resolve Technical Issues

Cornerstone site visits will be performed by an engineer once weekly for the 15-week period beginning Monday, August 3 and continuing through Friday, November 13. Photo documentation will be attached to a summary report and sent to LFUCG following each inspection.

3.2.8 Perform Necessary Project Management Activities and Communications

Cornerstone will provide necessary project management and communications to ensure the cap restoration project is completed on schedule, on budget, and in accordance with the contract plans and specifications.

3.2.9 Prepare As-Built Drawings and Final Construction Document

From a site topographic survey performed at the completion of construction, Cornerstone will produce a final record drawing depicting final contours. Index contours will be on 10-foot intervals with intermediate contours on 5-foot intervals. A construction report will be prepared and certified by a professional engineer licensed by the Commonwealth of Kentucky. The report will include a narrative summary of the work performed, photographic documentation, weekly site inspection reports, the record drawing, and the results of any testing performed.

3.2.10 Provide LFUCG with Document Containing All Items Relative to Project

Cornerstone will provide LFUCG with two (2) bound copies of the aforementioned construction report along with any other documents requested. The deliverables will include a CD containing all electronic files including drawing files.

3.3 Construction Quality Assurance

3.3.1 Assist the contract on interpreting items in the Plans and Specifications

Cornerstone will, in consultation with LFUCG, interpret various technical items in the plans and specifications as needed with a goal of meeting all project objectives in a timely and cost-efficient manner.

3.3.2 Conduct All Required Testing

Cornerstone will conduct any field testing required by the plans and specifications. Should laboratory testing be required, that work will be subcontracted at cost plus 15%, or LFUCG may wish to contract for those services separately.

3.3.3 Issue Inspection Reports for Each Site Visit

Cornerstone will issue a site inspection report following each visit. Each report will contain information with regard to day and time, weather conditions, progress achieved since the previous inspection, a description of the work being performed that day, areas of concern or apparent substandard work, and photographs. The report will be submitted to LFUCG within three (3) working days.

3.3.4 Assist Contractor in Preparing Requests for Payment

Cornerstone will assist the contractor in preparing requests for payment. Quantities and unit costs will be verified. When the pay request is in order, Cornerstone will execute the request and forward to LFUCG with a recommendation to pay.

3.3.5 Develop a Punch list

Cornerstone will, when notified by the contractor that construction is complete, schedule an inspection with the contractor and LFUCG. All aspects of construction will be observed and a punch list will be developed which identifies those items which require additional work or attention. The punch list will be delivered in writing within three (3) working days of the inspection.

3.3.6 Assist with Final Project Inspection

Cornerstone will, when notified by the contractor that all punch list items have been remedied, schedule a final verification inspection with the contractor and LFUCG. The results of the inspection will be provided in writing to both the contractor and LFUCG within three (3) working days.

3.4 Additional Engineering Services

Additional engineering services related to the Haley Pike Landfill facility can be provided to the Lexington-Fayette Urban County Government as requested. These services may include additional sampling and analysis, permit support, environmental assessments, treatability studies, and other engineering design and support. Costs for these services will be negotiated based upon the rate schedule included in Appendix C.



4 MWDBE PARTICIPATION

Cornerstone makes efforts to subcontract to minority-owned (MBE), woman-owned (WBE) and disadvantaged (DBE) business enterprises, however we had minimal opportunity to offer portions of work for this cap restoration engineering services project. Although we did contact two MWBE firms to assist with record drawing preparation, both unfortunately declined to participate in this project.

Cornerstone's completed MWDBE Participation form can be found in Appendix D.

5 PROPOSED FEES

The budgeted costs to perform the noted scope of work are provided below. The estimated cost and proposed scope of work are based on information available to Cornerstone at this time. If conditions change, unforeseen circumstances are encountered, or work efforts are redirected, the cost estimate may require modification.

A breakdown of costs by project task is provided below.

Task Number	Task Name	Labor	Expenses	Subcontractors	Total
1	Design Services	\$16,380	\$491	\$0	\$16,871
2	Construction Administration	\$18,160	\$3,995	\$0	\$22,155
4	Construction Quality Assurance	\$4,470	\$134	\$0	\$4,604
Total		\$39,010	\$4,620	\$0	\$43,630

The following key assumptions are noted for the purpose of this pricing:

- This cost assumes the base topographic maps, previous design plans, and record drawings will be provided by LFUCG in AutoCad format and may be relied upon for accuracy. Further, that previous specifications and standard contract documents will be provided by LFUCG in Microsoft Word format.
- This cost assumes that daily CQA technician services are not required by the project. The project site will be visited by an engineer to document progress, note any deficiencies, etc. once weekly during construction of the cap. Additional visits can be made upon request and will be billed separately in accordance with our standard rate schedule.
- Site visits are assumed once weekly for the 15 week period beginning Monday, August 3 and continuing through Friday, November 13.
- This cost assumes three meetings with LFUCG during the design process: once at project kickoff, again at 50% complete, and finally at 90% complete. Additional meetings will be held as requested by LFUCG and will be billed separately in accordance with our standard rate schedule.
- In order to meet the May 15 deadline for completion of design plans, specifications and bid documents the project must be awarded no later than April 1.

- This proposal assumes the cost of advertisement (if required) and reproduction of plans and specifications for bidders' use during the construction bid process will be borne by LFUCG.

5.1 Additional Engineering Services

Additional engineering services related to the Haley Pike Landfill facility will be provided to the Lexington-Fayette Urban County Government as requested. Costs for these services will be negotiated based upon the rate schedule included in Appendix C.

6 INVOICING FOR SERVICES

Cornerstone will invoice for all services provided for the Haley Pike cap restoration project. We will charge for our service time and expense, and include a project personnel listing by job title and hourly billing rate. We will provide invoices with a not-to-exceed pricing schedule for each section and a total cost of services.

7 ADDITIONAL RELEVANT INFORMATION

7.1 General Provisions

Cornerstone acknowledges and agrees to the general provisions provided by the Lexington-Fayette Urban Country Government for water monitoring at Haley Pike. A signed copy of those provisions can be found in Appendix E, along with a revised copy of risk management provisions.

Cornerstone is proposing alternate language in the Risk Management Indemnification provisions provided, and requesting a substitution in wording as follows:

New language:

(4) In the event LFUCG is alleged to be liable arising out of Consultant's negligence, Consultant shall defend such allegations and shall bear all costs, fees and expenses of such defense, including but not limited to, all reasonable attorneys' fees and expenses, court costs, and expert witness fees and expenses.

To replace current language:

(4) In the event LFUCG is alleged to be liable based upon the above, Consultant shall defend such allegations and shall bear all costs, fees and expenses of such defense, including but not limited to, all reasonable attorneys' fees and expenses, court costs, and expert witness fees and expenses, using attorneys approved in writing by LFUCG, which approval shall not be unreasonably withheld.

Note that Cornerstone will have no problem in furnishing all applicable Certificates of Insurance before starting work on this project.

7.2 RFP Addenda

Cornerstone also acknowledges receipt of RFP #1-2015 addenda, and provides signed letters in Appendix F.

APPENDIX A
CORNERSTONE SOQ



Building lifetime relationships with
our clients and employees



2014 Statement of Qualifications

Cornerstone Environmental Group, LLC

Introduction

Cornerstone serves our solid waste, commercial, and industrial clients with integrity, creativity, and expertise



Overview

Cornerstone Environmental Group, LLC (Cornerstone), is an environmental consulting firm dedicated to providing services to the solid waste and industrial markets. Our professionals are well known in commercial and industrial settings, with experience assisting clients in commercial real estate, investment banking, renewable energy, and the pulp and paper industry.

Cornerstone was founded on the principle of providing excellent, client-based services. The firm's strength is built on our senior leadership team's expertise in the solid waste and environmental fields.

"Cornerstone prides itself on constantly looking at ways to diversify and improve whether it's through technology or continued staff development - bottom line, this results in innovative solutions for our clients."

Ken Karl, Co-President, Chief Operating Officer



Board of Directors

Richard A. Peluso, PE Chairman
Dennis G. Fenn
Kenneth J. Karl
Michael S. Michels, PE
Matthew E. Davies

Executive Team



Kenneth J. Karl
Co-President,
Chief Operating Officer



Matthew E. Davies
Co-President,
Chief Marketing Officer



Michael S. Michels, PE
Executive Vice President



Gary DiPippo, PE
Region Vice President, East



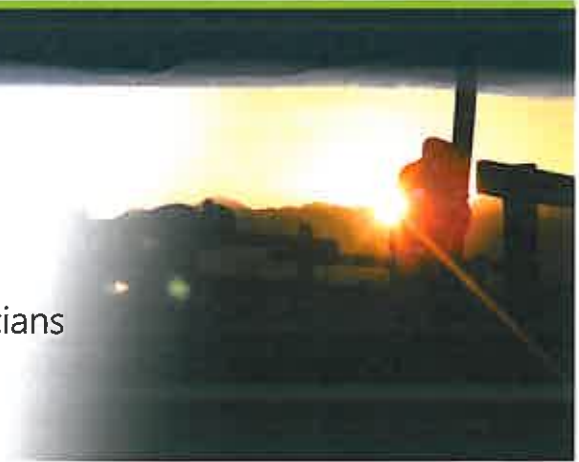
Paul Stout, PE
Region Vice President, West



Adam Larky, PE
Region Vice President, Central

Our Mission

Cornerstone is a company built on a strong foundation of engineers, scientists, and technicians with years of experience in the solid waste and environmental industries



Cornerstone Environmental Group, LLC is an engineering consulting and field service firm dedicated to providing services to the solid waste industry and commercial and industrial clients throughout the nation. The firm is founded by industry

leaders who have helped to develop and shape solid waste, energy, and environmental technology over the past 30 years.

Cornerstone's mission is to:

- Provide the highest quality of services, from project conception through completion.
- Focus on responsiveness and superior client service that exceeds our clients' expectations on every project.
- Provide a rewarding and challenging work environment that invites innovation and a strong passion for our work.

The firm's strength is built on extensive experience with both large and small companies as well as municipalities.

Markets we serve:

- Alternative Energy
- Environmental/Remediation
- Industrial
- Organics Management
- Solid Waste

Cornerstone staff consists of a team with significant expertise in the fields of solid waste management and environmental consulting. Cornerstone staff share a common vision to serve our clients with energy, integrity, and innovation.



Company Values

Our core values reflect our commitment to our clients and our staff



Client Focused

Cornerstone approaches projects with an understanding of our client's needs and ultimate objectives. This deep understanding allows us to focus our consulting services on fully satisfying our client. Our client focus has earned us trust and relationships that have lasted for decades.

Through constant communication among project team members and the client, the Cornerstone project team stays in touch and remains focused on the client's ultimate project goals.

Result Oriented

Cornerstone provides cost effective results that serve our clients' long-term needs. Oftentimes we have found that less expensive approaches may initially be attractive, but implementation of a second or third iteration almost always comes with an unattractive and unanticipated price tag.

Technically Sound

Cornerstone's expert staff focuses on the development of approaches based on sound technical principles. Our project teams consist of nationally recognized leaders in the technical disciplines that contribute to each project. We have earned the respect of clients and regulators.

Quality Focused

At Cornerstone, quality is work that is done right, on time, and on budget. Project deliverables are prepared in accordance with Cornerstone's Quality Control Policy, a uniform company-wide policy that incorporates internal reviews and provides company standards for our work.

Safety Oriented

Cornerstone is committed to 360 degree safety, including personal safety of our staff at home, in the office, and in the field, as well as the design of projects for safe implementation and operation.

Innovative

Today's practices must take full advantage of advancements in technology, knowledge of financial markets, competition, and operating practices. To advance the state of practice and provide forward looking sustainable projects, when the benefits are clear, Cornerstone implements new technology and reaches for the next innovation.



Environmental Engineering & Consulting

Concept to Completion

Cornerstone provides a range of specialized services to meet the needs of our clients



Environmental and Remediation Services

- Site characterization and remedial investigation
- Feasibility studies
- Remedial design
- Remedial action, in-situ and ex-situ
- Environmental planning and compliance
- Permitting
- Agency negotiations
- Special waste

Hydrogeology Services

- Site investigations
- Groundwater modeling
- Water supply services
- Data management/GIS
- Data visualization
- Support services

Air Quality Services

- Air permitting and permit compliance support
- Emission inventories, compliance assessments/facility audits, and control technology evaluations (BACT/LAER)
- Dispersion modeling/emissions testing review and oversight
- Air toxics health risk assessments
- Ambient air monitoring
- Community awareness/public relations support
- Pollution prevention planning
- Risk management plan development and review
- Environmental information management systems
- Greenhouse gas (GHG) emission reduction credit evaluations

Operations and Maintenance

- Facilities O&M, monitoring, inspections, and reporting
- Groundwater, surface water, air and leachate monitoring
- Training of site personnel on operations and reporting
- Construction management and small construction project capability
- Leachate collection system maintenance
- LFG/biogas collection and control system O&M

Site and Civil Design Services

- Site engineering and design
- Surface water management design
- Environmental engineering

Biogas and Landfill Gas Services

- Biogas engineering, control system design and phasing plans
- Biogas generation and recovery modeling
- NSPS Tier I/Tier II/Tier III evaluations
- Beneficial-use feasibility studies and design
- Air quality and greenhouse gas services
- Biogas-to-energy projects
- Operations and maintenance of biogas control equipment and systems
- Pipeline design
- Compressor station design
- Electric power station design

Landfill Engineering and Design

- Landfill site master planning and permitting
- Liner and final cover design/geosynthetics
- Hydrogeologic investigations
- Geotechnical/site characterization/slope stability
- Leachate collection system design/recirculation/bioreactor
- Infrastructure design and stormwater controls
- Closure financial plan/funding
- Landfill reclamation
- Construction management, procurement, and construction quality assurance (CQA)
- Operations sequencing

Transfer, Recycling, and Processing Facilities

- Solid waste management planning
- Facility planning
- Permitting
- Design
- Construction services
- Existing facility review
- Retrofit, remodeling

Environmental and Remediation Services

Cost effective solutions that turn environmental liabilities into assets creativity, and expertise



Cornerstone's environmental services are focused on helping our clients turn what may be considered an environmental liability into an asset. In addition to our years of experience in the solid waste industry, Cornerstone professionals are well

known for solving environmental problems in many commercial circles. We have experience with a variety of industries, including solid waste, banking, legal, real estate, pulp and paper, pharmaceuticals, electronic, metals finishing, agricultural, and transportation.

Cornerstone has performed environmental investigations that range from petroleum spills and leaking fuel tanks to evaluation of widespread heavy metals contamination from a mining and smelting operation and suspected releases from large unlined landfills.

Our staff has managed numerous site remediation projects. Our approach balances protection of human health and the environment with the need to control project costs and attain project goals for redevelopment or continued use.

Our experience includes contaminated soil removal and in-situ remediation of small-scale petroleum spills, sediment cleanup, asbestos-containing materials at large commercial properties, construction of low permeability caps at landfills and contaminated industrial sites, and contaminated soil removal and groundwater collection and/or in-situ treatment at organic solvent, petroleum, and metal plating waste contaminated sites.

Cornerstone's environmental and permitting services include:

Site Characterization

- Phase I Environmental Site Assessments
- Phase II Site Investigations
- File searches and record reviews
- Environmental sample collection and analysis
- Asbestos surveys and indoor air quality
- Field analytical services

Remedial Investigation/Action

- Underground storage tank closure
- RCRA corrective action
- Waste characterization/removal and disposal
- Construction management and oversight
- Brownfields support

Environmental Planning and Compliance

- Environmental impact statements
- Facility permitting
- Storm Water Pollution Prevention (SWPP) Plans
- Spill Prevention, Control, and Countermeasures (SPCC) Plans
- NPDES permitting
- Air quality monitoring and permitting
- NSPS/NESHAP compliance services and reporting
- Reporting (SARA, TRI, Toxic Use)
- Solid Waste Management Plans
- Regulatory compliance audits
- Environmental management systems

Hydrogeology Services

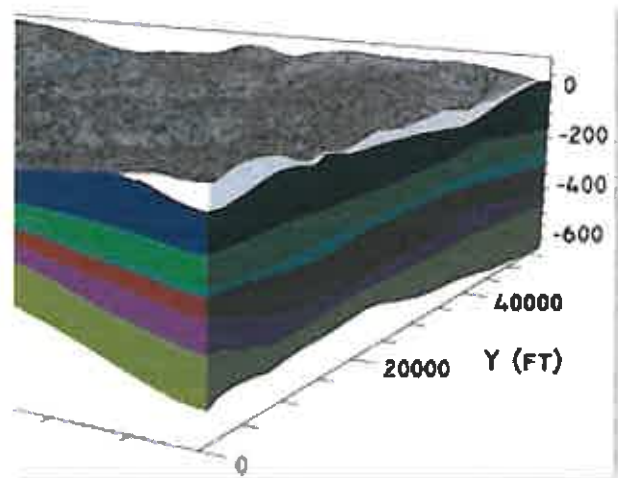
Setting the stage for effective site remediation, expansion, or re-use



Cornerstone specializes in providing cost-effective groundwater and other subsurface-related services. Our experience includes both operating and inactive landfills, industrial facilities, abandoned hazardous waste sites, and commercial facilities.

We can address every phase of a project, from initial site characterization through post-remediation compliance monitoring. Cornerstone provides a full spectrum of services tailored to accommodate the size and complexity of any site.

Our services have addressed a wide range of contaminants, including volatile organic compounds (VOCs), polycyclic aromatic hydrocarbons (PAHs), manufactured gas plant (MGP) wastes, and inorganic contamination, as well as both dense and light nonaqueous phase liquids (DNAPLs and LNAPL).



Our hydrogeology services include:



Site investigations – Cornerstone conducts thorough yet focused site investigations to attain economically sensible cleanup strategies to improve efficiency and reduce costs.

Groundwater modeling – Our nationally recognized

hydrogeologists and engineers each have more than 30 years of groundwater modeling experience. Cornerstone's capabilities range from simple, analytical based programs to fully three-dimensional numerical codes supported by graphics-based pre and post-processors.

Water supply services – Cornerstone's water supply

capabilities cover the entire water supply process. We have experience in all phases, from the initial hydrogeologic investigation to the design and testing of production wells, to the permitting of both supply wells and treatment systems.

Data management/GIS – Closely aligned with Cornerstone's data collection capabilities is the ability to compile, store and display these data in an efficient way.

Using databases like Microsoft Access and GIS applications such as Arcview, data are easily managed in a variety of innovative ways to support project objectives.

Data visualization – Cornerstone's visualization capabilities include animations with and without voice-overs, web-based interfaces, 3-dimensional displays, and GIS.

Support services – In addition to the technical services, Cornerstone has extensive experience in agency negotiations, public participation, and litigation support.

Operations & Maintenance

Skilled technicians maximize efficiency, manage routine and emergency needs, and reduce lifecycle costs



Cornerstone offers a wide range of operations and maintenance (O&M) services throughout the United States. Whether it's groundwater monitoring, leachate management, or landfill gas-to-energy (LFGTE) facilities, Cornerstone not only operates and maintains, but works to improve facilities.

For example, our technicians can properly balance the LFG wellfield to maximize gas production for use in cogeneration facilities, and at one facility increased LFG production and reduced the need to purchase natural gas from the local utility.

From overseeing construction to monitoring emissions, to environmental sampling and reporting, to operating facilities, our clients rely on us to ensure efficient, safe and productive operations and to maintain compliance with regulatory requirements.

Our range of skills eliminates the need for an outside contractor for many issues. In addition, Cornerstone also has significant experience in training our clients' own personnel to operate monitoring equipment or balance LFG collection systems.

For remediation systems, our attention to changing conditions permits us to reduce operating costs, for example, by shutting down groundwater extraction wells, adjusting treatment operations, introducing passive treatment options, or reducing monitoring frequency.

Our key O&M services include:

- Facilities O&M, monitoring, inspections, and reporting
- Groundwater, surface water, air, and leachate monitoring
- LFG collection and control system O&M
- Training of site personnel on operations and reporting
- Construction management and small construction project capability
- Leachate collection system maintenance



Air Quality Services

Cost-effective services and solutions that achieve air quality compliance while supporting business operations



Cornerstone provides air quality services to clients in the solid waste, renewable energy, industrial, pharmaceutical, and chemical process industries. Our work focuses on achieving compliance in a cost-effective manner, while supporting our clients' business

operations.

The company's air quality services personnel include a diverse mix of mechanical, chemical, civil, and environmental engineers, working alongside environmental scientists with a depth of experience in all areas of air quality services. Many of our staff have worked in industrial plants and have extensive hands-on experience in examining production processes from the perspective of emissions and by-products.

As part of our air quality services, Cornerstone serves carbon trading markets by representing biogas owners selling greenhouse gas (GHG) emission reduction credits produced when methane in the biogas is destroyed or used in a beneficial way. Examples include fueling an electrical generation facility, powering a factory, or heating a greenhouse. Cornerstone serves as a key partner in several collaborative projects between landfills, energy developers, and the carbon emissions trading market. In addition, Cornerstone has developed feasibility studies and evaluation reports to advise clients on selling GHG emission reduction credits.

Recently, Cornerstone expanded its GHG capabilities to assist clients with state GHG reporting requirements and comply with the new future federal mandatory GHG emissions reporting rule.

Cornerstone's air quality services include:

Permitting

- Air permitting – NSR (state-specific minor source and PSD/NNSR) and Title V
- Best Available Control Technology (BACT)/ Lowest Achievable Emission Rate (LAER) evaluations/state-specific BACT/BAT
- Atmospheric dispersion modeling (toxics, NSR/PSD, state-specific requirements)
- Emission inventories

Compliance

- Air toxics health risk assessments
- NSPS/NESHAP/ permit compliance support
- Compliance assessments/facility audits
- Source emissions testing review and oversight
- Greenhouse gas (GHG) services



Support Services

- LFG collection and control system O&M
- Ambient air monitoring/ monitoring plan development
- Community awareness/public relations support
- Pollution prevention planning
- Risk management plan development and review
- Environmental information management systems

Site and Civil Design Services

Solutions that are integrated with overall facility design and maximize our clients' assets

Cornerstone staff has years of experience providing services for site and civil features at solid waste, commercial, institutional, and industrial facilities. Our design, permitting, operations, and construction management solutions help clients maximize operational and asset efficiency, profit, safety, and durability.

Cornerstone listens to our clients to understand their goals for the facility, and then crafts an integrated design with civil elements to support those goals. The result is an efficient and aesthetically pleasing facility.

Our specialty is in providing site and civil design solutions that are integrated into the overall design of the facility and are coordinated with the design disciplines involved in a project. We offer innovative ways to maximize the operational flexibility of the facility, while complying with local, state, and national regulatory requirements. We also look for opportunities to incorporate sustainable design features that make efficient use of scarce resources and provide environmental benefits.

Our site/civil design services include:

Surface Water Management Design

- Hydrologic evaluations and hydraulic design
- Drainage/surface water management studies
- Clean Water Act Section 404 permitting
- Floodplain delineations
- Floodway encroachment studies
- Grading, drainage, and stormwater design and modeling
- Erosion control planning
- Stormwater Pollution Prevention Plans (SWPPP)



Site Design Engineering

- Preliminary planning and cost estimating
- Site circulation, parking and roadway design
- Site infrastructure
- Land use applications, planning, and regulatory agency assistance/coordination
- Procurement, construction management, and construction quality assurance (CQA)

Environmental Engineering

- Spill Prevention, Control, and Countermeasures (SPCC) Plans
- Due diligence investigations and reporting
- Groundwater sampling, compliance and consulting services
- Air sampling, compliance and consulting services
- Remedial investigations and consulting services



Biogas Services

We provide a wide range of biogas services to solid waste companies and municipalities

Cornerstone's experience with biogas (including landfill gas) collection, control, and beneficial re-use extends back to the inception of gas management at landfills.

Our staff members specialize in the assessment of the factors that affect biogas generation and recovery, and formulate the most effective plan for incorporating biogas collection and control systems (GCCS) into the facility.

We work with beneficial use developers to mesh the control components into the utilization facilities, so they operate in concert and not as competing entities. Many older facilities were developed on a stand alone basis, and Cornerstone strives to integrate the components into a seamless operation.

We also provide services in the emerging field of GHG emission reduction credit evaluations, including assisting clients with state GHG reporting requirements, as well as federal mandatory GHG emissions reporting rule, which became effective in 2010.

Cornerstone's biogas services are provided in the areas of:

- Biogas engineering, control system design, and multi-year control system phasing plans
- Biogas generation and recovery modeling
- NSPS Tier I/Tier II/Tier III evaluations
- Beneficial-use feasibility studies and design
- Air quality monitoring, permitting, compliance and reporting
- GHG emission reduction credit evaluations and reporting
- Biogas utilization landfill gas-to-energy projects
- Operations and maintenance of biogas control equipment and systems
- Landfill closure and post closure
- Landfill redevelopment and beneficial reuse of biogas
- Pipeline design
- Compressor station design
- Electric power station design



Landfill Engineering & Design

From concept to completion, Cornerstone provides the highest standard of landfill engineering and design services



Cornerstone's engineers have been in the forefront of the move towards comprehensive planning for all facilities necessary to operate and support landfills in an efficient and environmentally compliant manner, while accommodating future growth. Our solid waste design experts investigate the many possible ways of improving a facility's bottom line, depending upon the landfill's site-specific needs.

Cornerstone's years of landfill experience give us proficiency with each aspect of landfill design and engineering, construction, and operations, including site characterization, facility design and permitting, and construction management. Our background includes design of leachate collection systems, including pumping systems, landfill gas condensate sumps, leachate recirculation pumps and sanitary wastewater pumps, where required. We have significant experience with leachate recirculation/bioreactor landfills, and can help our clients decide if this option is feasible at their site.



Landfill gas collection and control systems (GCCS) have become a primary regulatory focus in recent years, and our engineers provide a consistent, performance-based approach to landfill gas control and utilization. From

designing the wellfield and gas collection header layout to flare sizing and development of beneficial-use facilities, our experts have completed extraction and control systems at more than one hundred facilities throughout the United States, Canada and South America. Cornerstone has a wide geographic

base of experience in landfill permitting, including permit applications for the full range of landfill types, from greenfield sites, to large horizontal or vertical expansions, to modifications of existing permits to incorporate operational or design improvements.

Cornerstone has significant experience and expertise with the full range of landfill stormwater and surface water management, from simple management of onsite flows to regional floodplain management studies.

We also offer construction management and construction quality assurance services on every aspect of landfill construction, including cell construction, installation of clay and geosynthetic liners, gas system construction, and leachate management systems.

Our key services include:

- Landfill site master planning
- Permitting
- Liner design and geosynthetics
- Geotechnical/site characterization/slope stability
- Leachate collection system design
- Bioreactor/leachate recirculation
- Gas collection and control system design
- Infrastructure design (force mains, pumps, water lines)
- Stormwater controls
- Air emissions evaluation and control
- Final cover (traditional and alternative)
- Closure financial plan/funding
- Landfill reclamation
- Construction management and CQA
- Construction cost estimation

Transfer, Recycling, and Processing Facilities

Our experts have decades of experience in transfer station and materials recovery facility design and operations



Cornerstone's team draws on our wide range of solid waste and site design experience to bring solutions to help clients maximize operational and asset efficiency, profit, safety, and durability for clients that transport and process a wide range

of waste types. We offer solutions that reflect regional experience, but also use successful national and international methods, equipment applications, and techniques.

Cornerstone refines transfer station and material recovery facility (MRF) design based on industry innovations, client feedback, and knowledge gained from permitting and construction projects across the nation. These refinements enhance and improve facility operations profitability, regulatory compliance, and energy efficiency.



We help clients select equipment that meets the needs of the waste environment, and we have significant experience developing bid documents and specifications for uniquely optioned and modified industrial equipment. Improving the operations of existing facilities is another one of our key strengths.

Our facility design staff includes licensed professional engineers and also certified LEED APs (Leadership in Energy & Environmental Design accredited professional). Our staff has been working with clients who have a growing interest in ensuring that new facilities are constructed, operated, and maintained in an environmentally responsible manner.

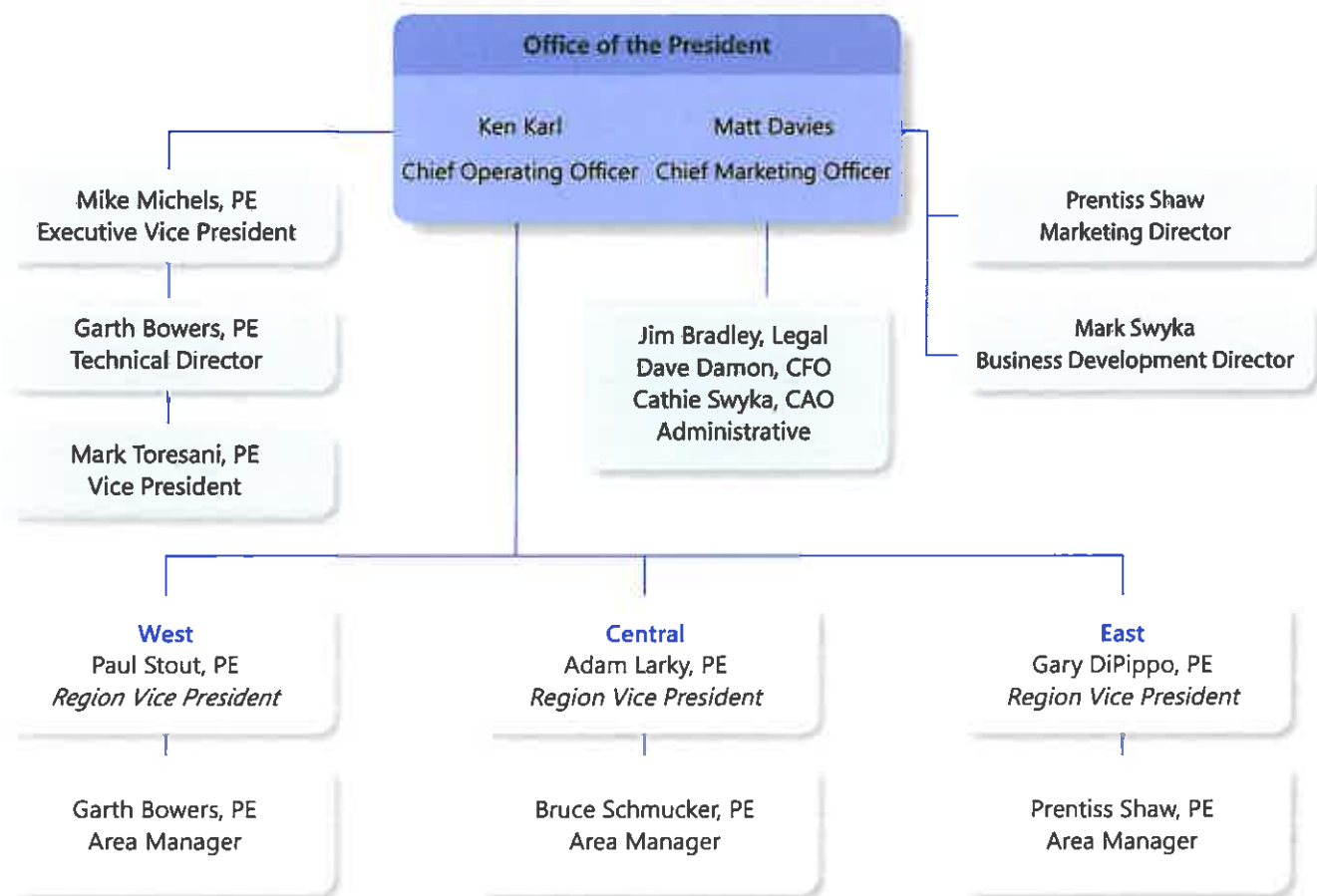
Our services include:

- Facility siting, application and approval process support
- Permitting and design of facility layout, operations, and air control equipment
- Preparation of construction plans and bid documents
- Construction oversight and certification
- Existing facility review



Management Team

Cornerstone is an organization committed to excellence and growth



Client List

Cornerstone shares a common vision - to serve our clients with energy, integrity, and innovation



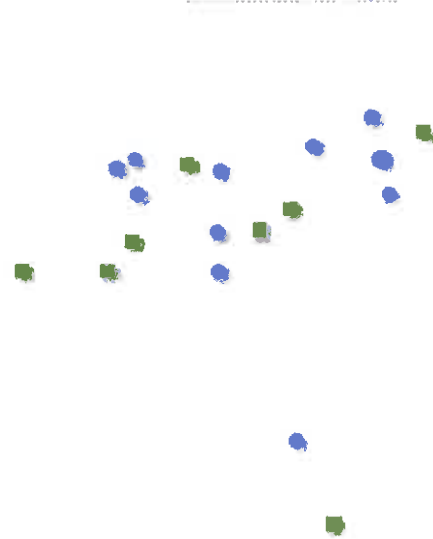
- Al Turi Landfill, Inc.
- Allegro Sanitation
- Ameresco
- Atlantic County Utilities Authority, NJ
- AZO Services, Inc.
- Cape May County Municipal Utilities Authority
- CECO Associates, Inc.
- City of Riverview, MI
- City of Tucson, AZ
- Clark Floyd Landfill, LLC
- Clean Energy Renewable Fuels
- CleanWorld
- Cochise County, AZ
- County of Maui Solid Waste Division, HI
- Dane County, WI
- Deffenbaugh Industries, Inc.
- Dewey & LeBoeuf, LLP
- DKL
- Drinker Biddle & Reath, LLP
- DTE Biomass
- Dubuque Metropolitan Area Solid Waste Authority, IA
- Eastman Kodak Company
- Endurant Energy, Inc.
- Fraternity Meadows
- Granger Electric & Energy Companies
- Greenstar, LLC
- Ground Water Investigations, Inc.
- Highstar Capital
- Honeywell International Inc.
- Innovative Technical Solutions, Inc. (ITSI)
- International Matex Tank Terminals (IMTT)
- J.R. Miller & Associates
- Kean Miller, LLP
- LEMCOR, Inc.
- LES Renewable Energy, LLC
- Lizard Rock Designs, AZ
- Marathon County Landfill, WI
- Maybrook and Harriman Trust
- New Jersey Meadowland Commission (NJMC)
- NPEC, Inc.
- Ocean County Landfill Corporation, NJ
- Orange County DPW Division, NY
- Pfizer
- Pollution Control Financing Authority of Camden County, NJ
- Pollution Control Financing Authority of Warren County, NJ
- Prestige Auto
- Progressive Waste Solutions
- PurEnergy Operating Services, LLC
- Putnam County, NY
- Republic Services, Inc.
- Rumpke Consolidated Companies, Inc.
- Shasta County, CA
- Sive Paget & Riesel P.C.
- Solid Waste Authority of Central Ohio (SWACO)
- State of Wisconsin Dept. of Administration Division of State Facilities
- Sullivan County, NY
- Sussex County Municipal Utilities Authority, NJ
- Town of Brookhaven, NY
- Transtech Industries, Inc.
- Waste Connections, Inc.
- Waste Corporation of America (WCA)
- Westchester County Department of Environmental Facilities, NY
- Western Placer Waste Management Authority, CA
- William Charles Waste Companies
- Zero Waste Energy

Contact Us

Cornerstone serves clients across the U.S. from a network of local offices



- Office Locations
- Satellite Offices



Arizona

17 W. Wetmore Rd.,
Suite 310, Tucson,
AZ 85705
Toll Free: (877) 633-5520
Fax: (520) 888-4804

California

7600 Dublin Blvd., Ste. 200,
Dublin, CA 94568
Toll Free: (877) 633-5520
Fax: (925) 560-9879

Florida

2812 Henley Rd. Suite E
Green Cove Springs, FL 32043

Kentucky

2456 Fortune Drive, Ste. 170,
Lexington, KY 40509

Illinois

400 Quadrangle Dr., Ste. E,
Bolingbrook, IL 60440
Toll Free: (877) 633-5520
Fax: (630) 378-2640

Michigan

39395 W. Twelve Mile Rd., Ste.
103, Farmington Hills, MI 48331
Toll Free: (877) 633-5520
Fax: (248) 994-5456

New Jersey

754 Route 18, Ste. 104, East
Brunswick, NJ 08816
Toll Free: (877) 294-9070
Fax: (845) 692-5894

New York

542 State Rte 29,
Greenwich, NY 12834
Toll Free: (877) 294-9070
Fax: (518) 692-9651

100 Crystal Run Rd., Ste 101,
Middletown, NY 10941
Toll Free: (877) 294-9070 Fax:
(845) 692-5894

1200 Scottsville Rd.,
Bldg. C, Ste. 120,
Rochester, NY 14624
Toll Free: (877) 294-9070 Fax:
(585) 563-6582

Ohio

10012 International Blvd., Cincin-
nati, OH 45246
Toll Free: (877) 633-5520 Fax:
(513) 870-0610

Oregon

7280 BE Suite Holman St.,
Suite B-6, Portland, OR 97218
Toll Free: (630) 410-7237

Satellite Locations

Toll Free: (877) 633-5520

Wisconsin

8413 Excelsior Dr.,
Suite 160, Madison,
WI 53717
Toll Free: (877) 633-5520

435 East Mill St., Ste. 3,
Plymouth, WI 53073
Toll Free: (877) 294-9070

APPENDIX B
RESUMES



Professional Qualifications

With over 30 years' experience managing complex engineering projects from both a design and a regulatory perspective, Jim Wade has a thorough knowledge of the solid waste industry, regulations, and zoning requirements in Kentucky as they relate to solid waste hauling, material recovery, composting, and disposal facilities. His combined operational, compliance, and engineering experience makes him an exceptional individual for management level project positions in the solid waste industry.

Education

B.S. - Mining Engineering, University of Kentucky, 1980

Registrations/Certifications

Licensed Professional Engineer in the Commonwealth of Kentucky

Licensed Landfill Manager in the Commonwealth of Kentucky

Additional Training

Radiation Safety Officer, Commonwealth of Kentucky

First Aid/CPR/AED Certified

Project Experience

Landfill Design and Permitting

- Senior Project Manager responsible for design and permitting of all aspects necessary for operation of numerous privately-owned and publicly-owned, municipal solid waste and construction/demolition debris landfills, located throughout Kentucky.

Specific project tasks include: liner design; cap design; leachate collection system design; leachate force main transport system design; closure and closure care cost estimating; operational narratives; surface water control design; environmental monitoring plans; QA/QC plans; preparation of construction drawings and specifications; bidding documents and support; construction contractor selection; construction observation and certification; solid waste permitting; KPDES permitting; US Army Corps of Engineers permitting; air

permitting; industrial discharge pre-treatment permitting; environmental studies; gas collection system design; annual capacity reports; and surveying.

Duties include project estimating; scheduling; tracking budgets; client liaison; interface with various regulatory agencies; assembling and directing project teams; quality control review; and hands-on production as needed.

- Senior Project Manager responsible for design and permitting a landfill expansion for a coal ash disposal facility located in south central Kentucky.

Construction Management

- Construction Manager and Certifying Engineer for various municipal solid waste and construction/demolition debris landfill cell and cap construction projects located throughout Kentucky. These include construction of composite low-permeability soil and geosynthetic cap and liner systems. Experience includes both hands-on construction observation as well as oversight and management of field construction personnel.

Compliance Programs

- Senior Project Manager responsible for preparing and updating county Solid Waste Management Plans for numerous counties located throughout Kentucky.
- Senior Project Manager responsible for environmental monitoring (surface water, ground water, and methane) and reporting programs at various landfills throughout Kentucky.

Landfill Remediation

- Senior Project Manager for the cap design and construction management of the first "historic" landfill to be closed under Kentucky's HB 174 program.

Business Development

- Responsible for building and maintaining both private and public client relations in the fields of solid waste management, mining, and municipal water and wastewater operations.

Professional Affiliations

National Society of Professional Engineers

Kentucky Society of Professional Engineers

Work Experience

2013 December - Present

Client Manager, Cornerstone Environmental Group, LLC, Lexington, Kentucky

James R. Wade, P.E.

Client Manager



1991- December 2013

Vice President, Nesbitt Engineering, Inc., Lexington, Kentucky

1986- 1991

Project Manager Nesbitt Engineering, Inc., Lexington, Kentucky

1984-1986

Branch Manager, Department for Surface Mining, Frankfort, Kentucky

1983-1984

Section Supervisor, Department for Surface Mining, Frankfort, Kentucky

1981-1983

Permit Reviewer, Department for Surface Mining, Frankfort, Kentucky



Professional Qualifications

Mr. Russell is a Professional Engineer with 32 years of experience in various aspects of project, facility, and corporate management experience in the construction, engineering consulting, and solid waste industries. In addition Mr. Russell has experience in design of storm and sanitary sewers, urban planning, mine reclamation, surveying, and extensive experience in the hydraulic analysis, design, bid document and construction of water distribution systems. Along with the design phases of the various projects, experience has been gained with administering Kentucky Community Development Block Grant programs, USDA Rural Development, and other governmental agencies programs.

Education

B.S. - Civil Engineering, University of Kentucky, 1981

Registrations/Certifications

Registered Professional Engineer in Kentucky, Florida, Georgia, Indiana, Louisiana, North Carolina, South Carolina, Washington, Missouri, and West Virginia

Additional Training

OSHA 40 Hour Hazardous Materials Safety Program
OSHA 8 Hour Hazardous Materials Supervisory Training

Project Experience

Landfill Design and Permitting

- Principal-In-Charge and Project Manager for permitting 13 contained facilities in the Commonwealth of Kentucky. This included both Greenfield sites and expansion of existing facility. The largest of these facilities was a 968 ac. Greenfield site.
- Principal-In-Charge for construction plan development and construction documentation of composite liner construction for over 18,000,000 square feet of liner. In addition to working in Kentucky, Mr. Russell has been Principal-In-Charge and Project Manager for these activities in West Virginia, Georgia, North Carolina and South Carolina.
- Experience includes over 32 years of experience with over 100 sites in various phases; planning, permitting, construction supervision, groundwater monitoring, daily operations,

landfill gas system designs and permitting, regulatory liaison in Kentucky, West Virginia, Georgia, North Carolina and South Carolina.

Transfer Station Permitting

- Experience with over 20 transfer station regarding permits. These permits include Division of Waste, Division of Water, SWPP and SPCC plans.

Construction Management

- Principal-In-Charge for construction plan development and construction documentation of composite liner construction for over 18,000,000 square feet of liner. In addition to working in Kentucky, Mr. Russell has been Principal-In-Charge and Project Manager for these activities in West Virginia, Georgia, North Carolina and South Carolina.

Compliance Programs

- Project Manager for a United States Army Corps of Engineers project for 20 lakes in three states conducting compliance sampling for over 120 locations.
- Project Manager for sampling compliance and verification for a 900 acre oil field and waste storage area for NORM waste.
- Project Manager for a project that required a Court Ordered monitoring for closure of a beneficially used waste placement project.
- Principal-In-Charge and Project manager for compliance monitoring for over 50 sites with point source discharge permits.

Acquisition/Due Diligence

- Principal-In-Charge and Project Manager for over 10 active solid waste sites for potential buyers.
- Project Manager for over 30 Phase I site investigations and 5 Phase II site investigations.

Remediation

- Certifying Engineer for a cleanup of the entire property, including buildings, of an operating Corrugated Paper Plant in Riegelsville, NJ.
- Certifying Engineer for water front Scrap Metal business in Louisville, KY for PCB, including the barge loading facility.
- Certifying Engineer for various activities at over 15 operating facilities

Rule and Policy Development

- Participated in the development of the current Solid Waste Regulations for Kentucky as a representative of the Kentucky Chamber of Commerce. These revisions were the most

comprehensive review and development ever for the Solid Waste Program for the Commonwealth of Kentucky.

- Involved with several other Rules and Regulations revisions and implementations representing the Kentucky Chapter of the National Solid Waste Management Association and American Council of Engineering Companies of Kentucky. These activities included; the process of Local Determination, Solid Waste permitting fees, Solid Waste tipping fees, Division of Water Rules and Regulations, Division of Air Quality Rules and regulations, Just Compensation for Haulers and other solid waste business issues.

Management

- Extensive management experience over his 30 years in the consulting business of which he was the President of multi-disciplined environmental engineering firm in the mid-west.

Business Development

- As President of a 60 person environmental consulting firm, one of Mr. Russell's duties were to oversee business development for the firm.

Professional Affiliations

National Society of Professional Engineers

Kentucky Society of Professional Engineers - Various Offices, Chapter President

American Water Works Association

National Solid Waste Management Association

- Kentucky Chapter Landfill Steering Committee
- Education Committee / Safety Committee

North American Geosynthetics Society

American Council of Engineering Companies

- ACEC / National Environmental Committee
- ACEC of KY - Past-Present / National Director
- ACEC of KY - Business Practice Committee, Legislative Committee, EEC - DEP Committee

Solid Waste Association of North America

- Kentucky Chapter - Board of Directors

Environmental Industry Association (NSWMA)

- Board of Governors Representative for Kentucky

Kentucky Chamber of Commerce

- Committee to draft current solid waste regulations

State Board of Licensure of Professional Engineers and Land Surveyors Member

- Chairman of State Board of Licensure for Professional Engineers and Land Surveyors
- Served on the National Committee - Committee on Examinations for professional Engineers
- Served on the Civil and Environmental Exam Writing Committee

Randall W. Russell, P.E.

Client Manager



Work Experience

2012 – Present

Client Manager, Cornerstone Environmental Group, LLC, Frankfort, Kentucky

1983 – November 2011

President and Principal for Kenvirons, Inc.

1982 – May 1983

Field Engineer for Halliburton Service



Professional Qualifications

Mr. Walker has 36 years of experience in civil and environmental engineering design, including 26 years full time involvement with the design, permitting, and construction of over 50 solid waste disposal facilities in Ohio and Michigan. This experience includes detailed design and permitting of four greenfield sites, four lateral expansions, four vertical expansions, and numerous conceptual expansion designs, alterations, and permit modifications.

He has prepared construction plans, specifications, bid and contract documents, phasing plans, operational plans, closure and post-closure plans, airspace evaluations, project development cost estimates, GCCS plans, hydrogeologic investigations, environmental assessments, geotechnical investigations including slope stability, settlement evaluations, and mine spoil investigations, construction quality assurance monitoring, pond closure plans, groundwater monitoring plans, NPDES permit applications, SPCC and stormwater pollution prevention plans. Mr. Walker has also prepared leachate recirculation plans for eight sites, soil and erosion control plans, and airspace management plans.

He has prepared detailed construction plans and contract documents for over 75 solid waste landfill cell construction projects ranging in cost from \$100,000 to over \$6,000,000 and 13 landfill closure projects. Mr. Walker has also certified construction of 30 landfill construction projects in Michigan, Ohio, and Kentucky.

Education

B.S. - Civil Engineering, University of Michigan, 1976
Master of Science, Graduate Coursework, Civil Engineering, Michigan State University

Registrations/Certifications

Licensed Professional Engineer in Ohio and Michigan

Project Experience

Landfill Design and Permitting

- Designed and permitted alternative final caps at five solid waste landfills with savings of \$15,000 per acre. Prepared construction plans for seven alternative final cap projects involving approximately 120 acres of construction.

- Project manager for Countywide Recycling and Disposal Facility remediation unit design team from 2006 to 2009. Completed design of temporary cap with subcap drainage and gas management system to accommodate seepage resulting from aluminum waste reaction to satisfy USEPA Orders. Project team received award from USEPA for this project. Subsequently in 2010, prepared PTI modification design to bifurcate the operational unit from remediation unit to satisfy Ohio EPA Director's Orders and allow for continued licensing of the facility.
- Project manager for 18 million lateral and vertical expansion of a 400 acre landfill approved in 2011. Permit application included hydrogeologic investigation, environmental assessment, design plans, engineering calculations, closure and post-closure plan, construction quality assurance plan.
- Prepared construction drawings, quantities and specifications for numerous cell, cap and stormwater management construction projects. Managed shear strength testing and submitted certified geotechnical reports. This background enables Mr. Walker to select optimal designs where required shear strength is significant such as final caps with stormwater infiltration.
- Technical manager for 84 million cubic yard expansion of American Landfill in Waynesburg, Ohio approved by Ohio EPA in 2006. Design included significant wetland permitting to maximize airspace, reinforced perimeter berms, slurry wall and a separatory liner over two existing units, a 160 acre lateral expansion between the two existing units and on the east and west sides. Provided expert testimony for permit appeal public hearing in 2009. Prepared construction plans, specifications, quantities and bid documents for initial expansion cell constructed and approved in 2007. Developed detailed 5 year phasing plans for expansion with design of access roads, stormwater management components, gas management controls and airspace phasing. Coordinated shear strength testing and submitted certified report to Ohio EPA for initial three expansion cells from 2007 to 2012.
- Prepared construction plans, specifications, quantities, bid documents and assisted in bid process and construction for Cells 5, 6A, 6B, 7A, 7B, 8, 9, 10NE, 10NW and 10 South at Brent Run Landfill in Montrose, Michigan from 2002 to 2012. Also prepared permit modification for facility in 2005 in preparation to maximize benefits of future expansion. Coordinated the project team, reviewed technical aspects of the package, initiated and maintained dialogue with the Michigan Department of Environmental Quality (MDEQ) to streamline the design process and delivered the project under budget within a tight timeframe to meet cell construction schedule. In 2007, prepared vertical expansion with raised perimeter berms for 1.2 million cubic yard expansion.
- Prepared temporary final cap design with gas collection, undercap leachate management, access road and stormwater drainage improvements in landfills in Tennessee (2010) and Missouri (2013) in order to mitigate elevated temperatures from a reactive waste. Projects included obtaining preparing an equivalency design submittal and obtaining regulatory approval of a PTI modification to replace the final cap soil barrier with a GCL. Also conducted a forensic evaluation of a final cap failure designed and certified by others.

- Prepared final cap construction plans, specifications, quantities and contract documents for construction of 17.7 acres of final cap at Brent Run Landfill and 6.6 acres of final cap at Whitefeather Landfill in Michigan in 2006 and 2007. The preliminary design for each project involved an evaluation of areas which would be filled and ready to receive final cap and determination of remaining airspace and grades to fill prior to the construction of the cap. Work included coordination and oversight for shear strength testing of the construction materials to demonstrate adequate slope stability and soil erodibility testing to satisfy acceptable soil erosion loss criteria.
- Prepared GCCS construction plans for three projects in 2012 – 2013 and certified construction of each project.
- Lead technical engineer for lateral and vertical landfill expansion of Mahoning Landfill in northeast Ohio completed in 2009 and currently under review by Ohio EPA. Also prepared cell construction plans, PTI alterations, phasing plans, slope stability analyses and shear strength testing for construction materials.
- Project Manager for lateral and vertical landfill expansion. Expansion provided 10,500,000 cubic yards of additional capacity in southeastern Michigan approved by MDEQ in 2006. Prepared additional 18,800,000 cubic yard lateral expansion with new hydrogeologic investigation for same facility approved in 2011.
- Project manager and lead technical director for a landfill permit modification package for the Brent Run Landfill. Coordinated the project team, reviewed technical aspects of the package, initiated and maintained dialogue with the Michigan Department of Environmental Quality (MDEQ) to streamline the design process and delivered the project under budget within a relatively tight timeframe. Project was approved by the MDEQ in 2005.
- Project manager/lead design engineer for 170 acre lateral and 88 acre vertical expansion for an Ohio solid waste landfill adding 72,000,000 cubic yards of airspace to facility. Provided expert testimony for ERAC permit appeal board which was decided in favor of client.
- Project manager/lead design engineer for initial 67 acre greenfield design permit to install application for solid waste landfill, approved by Ohio EPA in 1993. Permit was the first issued in the State of Ohio, under Best Available Technology rules. Project included design of sedimentation pond designed for 25% probable maximum flood and preparation of Type III dam construction permit application for submittal to Ohio DNR.
- Prepared expansion permit to install application for 100 acre solid waste landfill facility near Columbus, Ohio, approved by Ohio EPA. Submittal included slope stability analysis to address seismic zone location restriction demonstration concerns.
- Project manager/lead design engineer for 60 acre greenfield solid waste landfill permit to install application in Dayton, Ohio, approved by Ohio EPA. One of the first sites in Ohio permitted for 3:1 final slopes in a seismic zone. Design included groundwater control system designed using groundwater model to evaluate the potential hydrostatic uplift effects on liner. Design plans included detailed entrance facility and phasing plans of site development, access roads, temporary drainage structures and disposal volumes. Permit

documents included: construction and operation plans, CQA plan, closure and post-closure plans, contingency plan, hazardous waste prevention plan, stormwater pollution prevention plan and dam construction permit for sedimentation basin.

- Prepared design and construction permit application for a 105 acre vertical expansion of a solid waste landfill, approved by the Michigan DEQ in 2004.
- Prepared design and construction permit application for 100 acre expansion of a solid waste landfill in Sanilac, Michigan, approved by the Michigan DEQ. Facility was designed with a single composite liner and piggyback GCL/HDPE FML slope cap over the existing facility.
- Project manager for vertical expansion of a 148-acre municipal solid waste landfill in Wayne County, Michigan, approved by the Michigan DEQ. Prepared design and construction permit application for an 80 acre, double-composite-lined greenfield site solid waste landfill, approved by the Michigan DEQ.
- Project manager/principal engineer for two vertical expansions over a 77 acre solid waste landfill in Wayne County, Michigan, approved by the Michigan DEQ.
- Project manager/design engineer for a 40-acre vertical expansion of an existing Type II solid waste landfill site near Charlevoix, Michigan, approved by the Michigan DEQ.

Landfill Planning & Development

- Prepared conceptual design of expansions along with airspace estimates and project development costs for three sites owned by Republic Services in Michigan. Prepared options analysis of nine alternative expansion scenarios for other existing Michigan landfills along with airspace estimate and project development costs.
- Prepared annual consumed airspace, remaining airspace, soil balance and project construction cost estimates for six facilities owned by Republic Services in Ohio and Michigan for use by owner from 2001 to 2012. Phasing plans included proposed GCCS facilities for the last three years.
- Prepared six alternative expansion scenarios along with airspace estimate and project development costs for Republic Services. Owner used analysis to purchase land for selected expansion. Expansion was subsequently designed and approved.

Landfill Construction and Certification

- Certified construction of Cells 5A, 5B and 5C at Countywide RDF. Projects included use of tire chips for leachate collection in Cell 5A and temporary leachate sump in Cell 5C.
- Project manager for closure of ELDA Landfill, Cincinnati, Ohio including closure plan, soil sampling plan, construction plans and documents, and oversight of CQA personnel.
- Managed cell construction drawings and specifications, preparation for numerous municipal and private solid waste landfills, and four double-composite lined cells at type II landfill in central Michigan. Negotiated alternatives for leachate collection with MDEQ, which reduced cost and saved airspace. Certified construction of four cells.

- Certifying Engineer for construction of groundwater control system and single composite lined cell at Eagle Valley Landfill in Michigan. Negotiated alternate liner design with MDEQ to account for soil that did not meet classification specification.
- Designed and oversaw construction of a leachate management system for existing solid waste landfill facility including: extraction pumps, 15,000 gallon double-walled storage tank, double-walled force main piping, and truck loading pad with spill control drainage.
- Certifying engineer for construction of double-lined 2.75 acre solid waste landfill cell constructed at MSW facility in Lexington, Kentucky.

Leachate Management

- Prepared leachate recirculation plans and supporting calculations for eight solid waste landfills in Michigan and Ohio.
- Developed flexible leachate collection system design for Michigan sites that allows for most cost-effective use of drainage material, piping and geocomposite. Specification of granular layer varies depending on extent of geocomposite constructed.
- Prepared design of leachate storage tank and coordinated construction of above ground storage tank, pumps, pump controllers, piping, valving and truck loading pad for three solid waste landfills. Systems were designed with flexibility to pump from storage tank to leachate recirculation or to truck loading pad for offsite disposal.

Rule and Policy Development

- Mr. Walker has participated extensively in the Ohio solid waste industry group's involvement in the review, research, and comments of draft solid waste rules between 2000 and 2003, issued final in 2003. Worked on design issues with Ohio EPA that were subsequently incorporated into guidance documents. Currently working with NSWMA to provide comments on new rule package.
- Mr. Walker participated in the shredded tire leachate collection system demonstration conducted at Ohio landfill, and reviewed and provided comments for the final report.
- Worked with MDEQ to establish guidance for final grade slopes and soil erosion evaluation of solid waste landfills.
- Extensive communication with regulatory agencies on Owner's behalf and served as expert witness on four landfills.

Work Experience

2006 – Present

Senior Client Manager 2, Cornerstone Environmental Group, LLC, Farmington Hills, Michigan

1998 – 2006

Senior Project Manager, Shaw EMCON/OWT, Livonia, Michigan

James G. Walker, P.E.

Senior Client Manager 2



1987 – 1998

Senior Project Engineer, Waste Management, Rust Environment & Infrastructure, Livonia, Michigan

1982 – 1987

Senior Project Engineer, Gove Associates, Inc., Lansing, Michigan

1977 – 1982

Project Engineer, SEG, Lansing, Michigan

Professional Qualifications

Ms. Gregg is a civil and environmental engineer with professional experience in landfill cell and gas collection and control system design, geotechnical analysis, environmental permitting and reporting, statistical analysis, and construction quality assurance. Her project work has included preparation of feasibility reports, cost estimates, permit applications, operations and maintenance manuals, engineering drawings and reports, and construction oversight.

Education

Bachelor of Science, Civil and Environmental Engineering, University of Michigan, 2013

Registrations/Certifications

Fundamental Engineering Exam for Michigan, E.I.T., 2013

Additional Training

OSHA 40 Hour Hazwoper Training

Project Experience

Solid Waste

- Assisted in engineer design for LFG Plant in Canton Township, Michigan. Site design comprised iterations of plan sets to accommodate changing site needs, including stormwater drain relocation, utility connections, and local ordinance requirements. Assisted with coordination of permit applications among various local and state agencies.
- Conducted hydrogeological investigation for proposed landfill expansion in southeast Michigan. The work included data compilation and analysis and report preparation with drawings and cross sections.
- Reviewed storm water design calculations and preliminary design for storm water controls for out-of-state landfills.
- Prepared certification documentation, including management of data, preparation of as-built plans, and reporting for cell closure at several sites throughout Michigan.
- Assist with permit application for expansion of a landfill site in eastern Michigan. Included design of final grades, storm water management system, and end use plans.

Engineering Services

- Assisted in quarterly environmental monitoring for a landfill site in southeastern Michigan. Includes coordination of field and laboratory services, review of laboratory analysis, and reporting to various regulatory agencies.
- Prepared and/or updated management plans (operational plans, control plans, pollution prevention) for sites in southeastern Michigan.
- Reviewed special waste applications for a solid waste landfill in southeastern Michigan.
- Managed geotechnical site investigations for shallow foundations for retail sites across Michigan. Performed soil analysis and bearing capacity calculations, and prepared detailed report with results and recommendations.
- Performed storm water management design for several sites throughout Michigan, including pipe conveyance, retention basins, and applicable storm water permitting.
- Prepared permit applications for Joint Permit applications, National Pollutant Discharge Elimination System (NPDES), Storm Water Pollution Prevention Plans (SWPPP) and others.

Field Services

- Conducted field sampling in accordance with site-specific sampling plans for Phase II environmental site assessments.
- Observed and documented construction methods, materials, and quantities for compliance with specifications and plans.

Laboratory Services

- Performed a wide range of soil tests in laboratory, including sieve and hydrometer grain size analysis, modified Proctor maximum density, Atterberg Limits, specific gravity, compression testing, permittivity, and organic content.
- Performed geosynthetics analysis testing for compliance with specifications, including tensile strength, tear strength, apparent opening size, permittivity, unit weight, and puncture strength.

Work Experience

2014 – Present

Engineer/Scientist 1, Cornerstone Environmental Group, LLC, Farmington Hills, Michigan

June 2012 – Present

Geotechnical Engineering Research Assistant, University of Michigan (Network of Women in CEE), Ann Arbor, Michigan

Professional Qualifications

Mr. Gies holds the position of Engineer 1 with the primary responsibility of providing engineering support to various Project Managers and Project Engineers. He performs or assists with field surveying; environmental sampling; CAD file production; construction quality assurance; and report generation.

Education

B.S. – Civil Engineering, University of Kentucky, 2014

Registrations/Certifications

Fundamental Engineering Exam for Commonwealth of Kentucky, E.I.T., 2014

Additional Training

40 hour Hazwoper training

DOT/HazMat safety training

Project Experience

Landfills

- Is currently assisting others on construction oversight of temporary and final landfill caps, and surveying, at a landfill located in northeast Kentucky.

Professional Affiliations

American Society of Civil Engineers (ASCE)

Kentucky Society of Professional Engineers (KSPE)

Engineers Without Borders

Work Experience

2014 – Present

Engineer 1, Cornerstone Environmental Group, LLC, Lexington, Kentucky

2014

Intern, Palmer Engineering, Winchester, Kentucky

APPENDIX C
RATE SCHEDULE



100 Crystal Run Road, Suite 101, Middletown, NY 10941
 Phone: 845-695-0200 | Fax: 845-692-5894

2015 SCHEDULE OF CHARGES

PERSONNEL CHARGES

<u>Professional</u>	<u>Rate Per Hour</u>
Senior Project Manager/Technical Review	\$115 – 225/hr
Senior Project Staff/Project Manager	\$80 – 145/hr
Project Staff	\$50 – 125/hr
 <u>Technical</u>	
CAD Operator/Designer	\$70 – 130/hr
Field Technician/Field Manager	\$45 – 125/hr
 <u>Support Services</u>	
Administrative	\$45 – 75/hr

Depositions and expert witness testimony, including preparation time, will be charged at 150% - 200% of the above rates.

Travel time will be charged in accordance with the above rates, up to a maximum of 8 hours per day.

OUTSIDE SERVICES

Charges for special outside services, equipment, and facilities not furnished directly by Cornerstone will be billed at cost plus 15%.

COMMUNICATIONS

The cost of communications including telephone charges, facsimile, postage and routine copying costs will be charged at a flat rate of 3% of total gross labor charges.

DIRECT CHARGES

Reproduction (letter & legal) – black and white, per sheet	\$0.10
Reproduction (letter & legal) – color, per sheet	\$1.25
CAD Plots/Reproduction – black and white, per square foot	\$0.35
CAD Laser Plots - color, per square foot	\$2.00
CAD Laser Plots – black and white, Vellum, per square foot	\$2.00
CAD Laser Plots – black and white, Mylar, per square foot	\$4.00
Auto per mile	Current government rate
Pickup truck per day	\$125.00

Rate Changes

Rates are subject to maximum 3% increase per year.

Payment

Monthly invoices are to be paid within 30 days from invoice date. Interest on late payments will be charged at a rate of 18% per annum.

APPENDIX D
MWDBE PARTICIPATION FORM

AFFIDAVIT

Comes the Affiant, James R. Wade, and after being first duly sworn, states under penalty of perjury as follows:

1. His/her name is James R. Wade and he/she is the individual submitting the proposal or is the authorized representative of Cornerstone Environmental Group, LLC, the entity submitting the proposal (hereinafter referred to as "Proposer").

2. Proposer will pay all taxes and fees, which are owed to the Lexington-Fayette Urban County Government at the time the proposal is submitted, prior to award of the contract and will maintain a "current" status in regard to those taxes and fees during the life of the contract.

3. Proposer will obtain a Lexington-Fayette Urban County Government business license, if applicable, prior to award of the contract.

4. Proposer has authorized the Division of Central Purchasing to verify the above-mentioned information with the Division of Revenue and to disclose to the Urban County Council that taxes and/or fees are delinquent or that a business license has not been obtained.

5. Proposer has not knowingly violated any provision of the campaign finance laws of the Commonwealth of Kentucky within the past five (5) years and the award of a contract to the Proposer will not violate any provision of the campaign finance laws of the Commonwealth.

6. Proposer has not knowingly violated any provision of Chapter 25 of the Lexington-Fayette Urban County Government Code of Ordinances, known as "Ethics Act."

Continued on next page

7. Proposer acknowledges that "knowingly" for purposes of this Affidavit means, with respect to conduct or to circumstances described by a statute or ordinance defining an offense, that a person is aware or should have been aware that his conduct is of that nature or that the circumstance exists.

Further, Affiant sayeth naught.

James R. Wade
STATE OF Kentucky
COUNTY OF Fayette

The foregoing instrument was subscribed, sworn to and acknowledged before me
by James R. Wade on this the 8th day
of March, 2013: 2015

My Commission expires: May 14, 2016

Judy J. Wade
NOTARY PUBLIC, STATE AT LARGE



100 Crystal Run Road, Suite 101, Middletown, NY 10941
T 877.294.9070 · F 845.692.5894 · W www.cornerstoneeg.com

December 2014

To Whom It May Concern

Cornerstone Environmental Group, LLC is committed to affirmative action for all employees and potential employees. The attached Affirmative Action Plan represents our commitment to providing equal employment opportunity. We welcome comments and suggestions for continuously improving this Plan.

Cornerstone Environmental Group, LLC

A handwritten signature in black ink, appearing to read "Kenneth J. Karl".

Kenneth J. Karl
Co-President, Chief Operating Officer

cc: Administrative file

**CORNERSTONE ENVIRONMENTAL GROUP, LLC
AFFIRMATIVE ACTION PLAN
TABLE OF CONTENTS**

Letter from the Co-Presidents		
Table of Contents		i
1	INTRODUCTION AND BACKGROUND	1-1
2	EQUAL EMPLOYMENT OPPORTUNITY POLICY STATEMENT	2-1
3	WORK FORCE ANALYSIS	3-1
4	GOALS AND OBJECTIVES	4-1
5	DISSEMINATION PLAN	5-1
6	PROCEDURES FOR MONITORING THE PLAN IMPLEMENTATION	6-1

1 INTRODUCTION AND BACKGROUND

Cornerstone Environmental Group, LLC (Cornerstone) is an engineering firm dedicated to providing solid waste and environmental services. Cornerstone is a limited liability company formed December 21, 2005 in the State of New York. The company currently has offices in Arizona, California, Florida, Illinois, Kentucky, Michigan, New Jersey, New York, Ohio, Oregon, Pennsylvania, and Wisconsin. The firm is founded by industry leaders who have helped to develop and shape solid waste, energy and environmental technology over the past 40 years. Currently, Cornerstone has approximately 175 employees with plans for additional growth. As specialists in environmental consulting, we service a niche market and provide the highest value added services available to clients throughout the nation.

The firm's strength is built on extensive experience with both large and small companies as well as municipalities. Our services include:

- ◆ Air quality
- ◆ Biogas and landfill gas
- ◆ Environmental planning and compliance
- ◆ Hydrogeology
- ◆ Landfill engineering and design
- ◆ Operations and maintenance
- ◆ Organics management
- ◆ Remediation
- ◆ Site and civil design
- ◆ Transactional services
- ◆ Transfer, recycling, and processing facilities

2 EQUAL EMPLOYMENT OPPORTUNITY POLICY STATEMENT

To further its goal of equal employment opportunity for all employees and prospective employees without regard to race, color, religion, sex, age, national origin, disability, veteran status or any other basis prohibited by applicable law, Cornerstone Environmental Group, LLC states as its policy the following:

It is the policy of Cornerstone Environmental Group, LLC in accordance with all applicable laws, to recruit, hire, train and promote persons of all job classifications without regard to race, color, religious creed, sex, national origin, ancestry, citizenship status, pregnancy, childbirth, physical disability, mental and/or intellectual disability, age, military status, veteran status (including protected veterans), marital status, registered domestic partner or civil union status, gender (including sex stereotyping and gender identity or expression), medical condition (including, but not limited to, cancer related or HIV/AIDS related), genetic information, or sexual orientation in accordance with applicable federal, state and local laws.

The Management of Cornerstone Environmental Group, LLC and all supervisory personnel are committed to the Company's policy of equal opportunity and are resolved to promote its Affirmative Action Plan in all of its operations.

It has been and will continue to be the Company's practice to make employment decisions consistent with the principle of equal employment opportunity. Promotional decisions are made by imposing only valid requirements for promotional opportunities, thereby assuring that each employee is granted the right to succeed according to the employee's own abilities and efforts, without regard to race, color, religious creed, sex, national origin, ancestry, citizenship status, pregnancy, childbirth, physical disability, mental and/or intellectual disability, age, military status, veteran status (including protected veterans), marital status, registered domestic partner or civil union status, gender (including sex stereotyping and gender identity or expression), medical condition (including, but not limited to, cancer related or HIV/AIDS related), genetic information, or sexual orientation.

The Company ensures that all other personnel actions, such as compensation, benefits, transfers, layoffs, returns from layoffs, Company-sponsored training, educational, social and recreational programs, will be administered without regard to race, color, religious creed, sex, national origin, ancestry, citizenship status, pregnancy, childbirth, physical disability, mental and/or intellectual disability, age, military status, veteran status (including protected veterans), marital status, registered domestic partner or civil union status, gender (including sex stereotyping and gender identity or expression), medical


condition (including, but not limited to, cancer related or HIV/AIDS related), genetic information, or sexual orientation or any other basis prohibited by applicable law.

Cornerstone Environmental Group, LLC does not tolerate harassment or intimidation of its employees on the basis of race, color, religious creed, sex, national origin, ancestry, citizenship status, pregnancy, childbirth, physical disability, mental and/or intellectual disability, age, military status, veteran status (including protected veterans), marital status, registered domestic partner or civil union status, gender (including sex stereotyping and gender identity or expression), medical condition (including, but not limited to, cancer related or HIV/AIDS related), genetic information, or sexual orientation, nor does it allow suggestions to be made to employees that sexual favors will have an effect on employment with the Company. Any employee who becomes aware of any discriminatory behavior or any activity, which might be considered harassment in violation of this policy, has the responsibility to report such conduct to Cornerstone management.

We ask that all recruiting sources, educational entities, community organizations, minority organizations, subcontractors, vendors, suppliers, trainers, women organizations, veteran organizations and disabled organizations, support us in this endeavor.



Chief Administrative Officer



Date

**3 WORK FORCE ANALYSIS
WORKFORCE ANALYSIS FORM**

Name of Organization: Cornerstone Environmental Group, LLC
 Date: 12/03/2014

Categories	Total	White		Latino		Black		Other		Total	
		M	F	M	F	M	F	M	F	M	F
Administrators	19	17	2							17	2
Professionals	100	60	29	1		1	5	4		66	34
Superintendents											
Supervisors											
Foremen											
Technicians	40	33	4	1			2			36	4
Protective Service											
Para-Professionals											
Office/Clerical	16	1	13		1			1		1	15
Skilled Craft											
Service/Maintenance											
Total:	175	111	48	2	1	1	7	5		120	55

Prepared by: Catherine A. Szylka, Administrative Officer
 Name & Title

4 GOALS AND OBJECTIVES

Cornerstone Environmental Group, LLC goals and objectives for Affirmative Action are as follows:

- Recruit and appoint women, minorities, and individuals with disabilities for vacancies in the same percentage as they are available in the labor market where our offices and/or projects are located;
- Broaden recruitment notices to include professional and community organizations / media likely to refer women, minorities, and individuals with disabilities;
- Make better known our employee assistance program;
- Allow part-time employment where possible for persons for whom full-time employment is difficult;
- Identify means to strengthen its retention of women, minorities, and individuals with disabilities; and
- Conduct training of our executive and hiring managers on affirmative action issues and initiatives.

5 DISSEMINATION PLAN

Cornerstone Environmental Group, LLC will broadly disseminate this Affirmative Action Plan to all offices of the Company so our employees can review the Plan, familiarize themselves with the Plan, and assist in its implementation. Additionally, Affirmative Action as discussed herein will be included in:

- Agendas of executive and staff meetings, as appropriate;
- Advertisements for employment, highlighting that Cornerstone Environmental Group, LLC is an equal opportunity employer functioning under an Affirmative Action Plan; and
- Handbooks distributed to employees.

6 PROCEDURES FOR MONITORING THE PLAN IMPLEMENTATION

Cornerstone Environmental Group, LLC will monitor the Affirmative Action Plan annually by the Chief Administrative Officer. The Chief Administrative Officer's recommendations from this review will be submitted to the Managers of Cornerstone Environmental Group, LLC and appropriate actions taken.

The Chief Administrative Officer and all managers of Cornerstone Environmental Group, LLC will be held responsible to implement this plan through annual performance appraisal and compensation review.

EQUAL OPPORTUNITY AGREEMENT

The Law

- Title VII of the Civil Rights Act of 1964 (amended 1972) states that it is unlawful for an employer to discriminate in employment because of race, color, religion, sex, age (40-70 years) or national origin.
- Executive Order No. 11246 on Nondiscrimination under Federal contract prohibits employment discrimination by contractor and sub-contractor doing business with the Federal Government or recipients of Federal funds. This order was later amended by Executive Order No. 11375 to prohibit discrimination on the basis of sex.
- Section 503 of the Rehabilitation Act of 1973 states:

The Contractor will not discriminate against any employee or applicant for employment because of physical or mental handicap.

- Section 2012 of the Vietnam Era Veterans Readjustment Act of 1973 requires Affirmative Action on behalf of disabled veterans and veterans of the Vietnam Era by contractors having Federal contracts.
- Section 206(A) of Executive Order 12086, Consolidation of Contract Compliance Functions for Equal Employment Opportunity, states:

The Secretary of Labor may investigate the employment practices of any Government contractor or sub-contractor to determine whether or not the contractual provisions specified in Section 202 of this order have been violated.

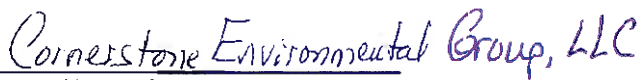
The Lexington-Fayette Urban County Government practices Equal Opportunity in recruiting, hiring and promoting. It is the Government's intent to affirmatively provide employment opportunities for those individuals who have previously not been allowed to enter into the mainstream of society. Because of its importance to the local Government, this policy carries the full endorsement of the Mayor, Commissioners, Directors and all supervisory personnel. In following this commitment to Equal Employment Opportunity and because the Government is the benefactor of the Federal funds, it is both against the Urban County Government policy and illegal for the Government to let contracts to companies which knowingly or unknowingly practice discrimination in their employment practices. Violation of the above mentioned ordinances may cause a contract to be canceled and the contractors may be declared ineligible for future consideration.

Please sign this statement in the appropriate space acknowledging that you have read and understand the provisions contained herein. Return this document as part of your application packet.

Bidders

I/We agree to comply with the Civil Rights Laws listed above that govern employment rights of minorities, women, Vietnam veterans, handicapped and aged persons.


Signature


Name of Business

WORKFORCE ANALYSIS FORM

Name of Organization: Cornerstone Environmental Group, LLC

Date: 12/03/2014

Categories	Total	White		Latino		Black		Other		Total	
		M	F	M	F	M	F	M	F	M	F
Administrators	19	17	2							17	2
Professionals	100	60	29	1		1	5	4	66	34	
Superintendents											
Supervisors											
Foremen											
Technicians	40	33	4	1			2		36	4	
Protective Service											
Para-Professionals											
Office/Clerical	16	1	13		1			1	1	15	
Skilled Craft											
Service/Maintenance											
Total:	175	111	48	2	1	1	7	5	120	55	

Prepared by: Catherine A. Snyker, Administrative Officer
 Name & Title

**DIRECTOR, DIVISION OF CENTRAL PURCHASING
LEXINGTON-FAYETTE URBAN COUNTY GOVERNMENT
200 EAST MAIN STREET
LEXINGTON, KENTUCKY 40507**

**NOTICE OF REQUIREMENT FOR AFFIRMATIVE ACTION TO ENSURE EQUAL
EMPLOYMENT OPPORTUNITIES AND DBE CONTRACT PARTICIPATION**

Notice of requirement for Affirmative Action to ensure Equal Employment Opportunities and Disadvantaged Business Enterprises (DBE) Contract participation. Disadvantaged Business Enterprises (DBE) consists of Minority-Owned Business Enterprises (MBE) and Woman-Owned Business Enterprises (WBE).

The Lexington-Fayette Urban County Government has set a goal that not less than ten percent (10%) of the total value of this Contract be subcontracted to Disadvantaged Business Enterprises, which is made up of MBEs and WBEs. The goal for the utilization of Disadvantaged Business Enterprises as subcontractors is a recommended goal. Contractor(s) who fail to meet such goal will be expected to provide written explanations to the Director of the Division of Purchasing of efforts they have made to accomplish the recommended goal, and the extent to which they are successful in accomplishing the recommended goal will be a consideration in the procurement process. Depending on the funding source, other DBE goals may apply.

For assistance in locating MBE/WBE Subcontractors contact Marilyn Clark at 859/258-3320 or by writing the address listed below:

Marilyn Clark, Division of Central Purchasing
Lexington-Fayette Urban County Government
200 East Main Street – Room 338
Lexington, Kentucky
40507 mclark@lexingtonky.gov

Firm Submitting Proposal: Cornerstone Environmental Group, LLC

Complete Address: 2456 Fortune Drive, Suite 170, Lexington, KY 40509

Contact Name: James Wade Title: Client Manager

Telephone Number: 630-410-7228 Fax Number: _____

Email address: james.wade@cornerstoneeg.com



LFUCG MWDBE PARTICIPATION FORM

Bid/RFP/Quote Reference # RFP #1-2015

The MWDBE subcontractors listed have agreed to participate on this Bid/RFP/Quote. If any substitution is made or the total value of the work is changed prior to or after the job is in progress, it is understood that those substitutions must be submitted to Central Purchasing for approval immediately.

MWDBE Company, Name, Address, Phone, Email	Work to be Performed	Total Dollar Value of the Work	% Value of Total Contract
1. None			
2.			
3.			
4.			

The undersigned company representative submits the above list of MWDBE firms to be used in accomplishing the work contained in this Bid/RFP/Quote. Any misrepresentation may result in the termination of the contract and/or be subject to applicable Federal and State laws concerning false statements and false claims.

Cornerstone Environmental Group, LLC
Company

03-09-15
Date

James R. Wade
Company Representative

Client Manager
Title

APPENDIX E
GENERAL PROVISIONS AND INSURANCE FORMS

GENERAL PROVISIONS

1. Each Respondent shall comply with all Federal, State & Local regulations concerning this type of service or good.

The Respondent agrees to comply with all statutes, rules, and regulations governing safe and healthful working conditions, including the Occupational Health and Safety Act of 1970, 29 U.S.C. 650 *et. seq.*, as amended, and KRS Chapter 338. The Respondent also agrees to notify the LFUCG in writing immediately upon detection of any unsafe and/or unhealthful working conditions at the job site. The Respondent agrees to indemnify, defend and hold the LFUCG harmless from all penalties, fines or other expenses arising out of the alleged violation of said laws.

2. Failure to submit ALL forms and information required in this RFP may be grounds for disqualification.
3. Addenda: All addenda, if any, shall be considered in making the proposal, and such addenda shall be made a part of this RFP. Before submitting a proposal, it is incumbent upon each proposer to be informed as to whether any addenda have been issued, and the failure to cover in the bid any such addenda may result in disqualification of that proposal.
4. Proposal Reservations: LFUCG reserves the right to reject any or all proposals, to award in whole or part, and to waive minor immaterial defects in proposals. LFUCG may consider any alternative proposal that meets its basic needs.
5. Liability: LFUCG is not responsible for any cost incurred by a Respondent in the preparation of proposals.
6. Changes/Alterations: Respondent may change or withdraw a proposal at any time prior to the opening; however, no oral modifications will be allowed. Only letters, or other formal written requests for modifications or corrections of a previously submitted proposal which is addressed in the same manner as the proposal, and received by LFUCG prior to the scheduled closing time for receipt of proposals, will be accepted. The proposal, when opened, will then be corrected in accordance with such written request(s), provided that the written request is contained in a sealed envelope which is plainly marked "modifications of proposal".
7. Clarification of Submittal: LFUCG reserves the right to obtain clarification of any point in a bid or to obtain additional information from a Respondent.
8. Bribery Clause: By his/her signature on the bid, Respondent certifies that no employee of his/hers, any affiliate or Subcontractor, has bribed or

attempted to bribe an officer or employee of the LFUCG.

9. Additional Information: While not necessary, the Respondent may include any product brochures, software documentation, sample reports, or other documentation that may assist LFUCG in better understanding and evaluating the Respondent's response. Additional documentation shall not serve as a substitute for other documentation which is required by this RFP to be submitted with the proposal,
10. Ambiguity, Conflict or other Errors in RFP: If a Respondent discovers any ambiguity, conflict, discrepancy, omission or other error in the RFP, it shall immediately notify LFUCG of such error in writing and request modification or clarification of the document if allowable by the LFUCG.
11. Agreement to Bid Terms: In submitting this proposal, the Respondent agrees that it has carefully examined the specifications and all provisions relating to the work to be done attached hereto and made part of this proposal. By acceptance of a Contract under this RFP, proposer states that it understands the meaning, intent and requirements of the RFP and agrees to the same. The successful Respondent shall warrant that it is familiar with and understands all provisions herein and shall warrant that it can comply with them. No additional compensation to Respondent shall be authorized for services or expenses reasonably covered under these provisions that the proposer omits from its Proposal.
12. Cancellation: If the services to be performed hereunder by the Respondent are not performed in an acceptable manner to the LFUCG, the LFUCG may cancel this contract for cause by providing written notice to the proposer, giving at least thirty (30) days notice of the proposed cancellation and the reasons for same. During that time period, the proposer may seek to bring the performance of services hereunder to a level that is acceptable to the LFUCG, and the LFUCG may rescind the cancellation if such action is in its best interest.

A. Termination for Cause

- (1) LFUCG may terminate a contract because of the contractor's failure to perform its contractual duties
- (2) If a contractor is determined to be in default, LFUCG shall notify the contractor of the determination in writing, and may include a specified date by which the contractor shall cure the identified deficiencies. LFUCG may proceed with termination if the contractor fails to cure the deficiencies within the specified time.

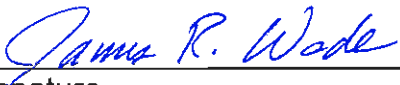
- (3) A default in performance by a contractor for which a contract may be terminated shall include, but shall not necessarily be limited to:
- (a) Failure to perform the contract according to its terms, conditions and specifications;
 - (b) Failure to make delivery within the time specified or according to a delivery schedule fixed by the contract;
 - (c) Late payment or nonpayment of bills for labor, materials, supplies, or equipment furnished in connection with a contract for construction services as evidenced by mechanics' liens filed pursuant to the provisions of KRS Chapter 376, or letters of indebtedness received from creditors by the purchasing agency;
 - (d) Failure to diligently advance the work under a contract for construction services;
 - (e) The filing of a bankruptcy petition by or against the contractor; or
 - (f) Actions that endanger the health, safety or welfare of the LFUCG or its citizens.

B. At Will Termination

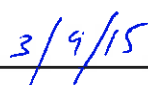
Notwithstanding the above provisions, the LFUCG may terminate this contract at will in accordance with the law upon providing thirty (30) days written notice of that intent, Payment for services or goods received prior to termination shall be made by the LFUCG provided these goods or services were provided in a manner acceptable to the LFUCG. Payment for those goods and services shall not be unreasonably withheld.

13. **Assignment of Contract:** The contractor shall not assign or subcontract any portion of the Contract without the express written consent of LFUCG. Any purported assignment or subcontract in violation hereof shall be void. It is expressly acknowledged that LFUCG shall never be required or obligated to consent to any request for assignment or subcontract; and further that such refusal to consent can be for any or no reason, fully within the sole discretion of LFUCG.
14. **No Waiver:** No failure or delay by LFUCG in exercising any right, remedy, power or privilege hereunder, nor any single or partial exercise thereof, nor the exercise of any other right, remedy, power or privilege shall operate as a waiver hereof or thereof. No failure or delay by LFUCG in exercising any right, remedy, power or privilege under or in respect of this Contract shall affect the rights, remedies, powers or privileges of LFUCG hereunder or shall operate as a waiver thereof.

15. Authority to do Business: The Respondent must be a duly organized and authorized to do business under the laws of Kentucky. Respondent must be in good standing and have full legal capacity to provide the services specified under this Contract. The Respondent must have all necessary right and lawful authority to enter into this Contract for the full term hereof and that proper corporate or other action has been duly taken authorizing the Respondent to enter into this Contract. The Respondent will provide LFUCG with a copy of a corporate resolution authorizing this action and a letter from an attorney confirming that the proposer is authorized to do business in the State of Kentucky if requested. All proposals must be signed by a duly authorized officer, agent or employee of the Respondent.
16. Governing Law: This Contract shall be governed by and construed in accordance with the laws of the Commonwealth of Kentucky. In the event of any proceedings regarding this Contract, the Parties agree that the venue shall be the Fayette County Circuit Court or the U.S. District Court for the Eastern District of Kentucky, Lexington Division. All parties expressly consent to personal jurisdiction and venue in such Court for the limited and sole purpose of proceedings relating to this Contract or any rights or obligations arising thereunder. Service of process may be accomplished by following the procedures prescribed by law.
17. Ability to Meet Obligations: Respondent affirmatively states that there are no actions, suits or proceedings of any kind pending against Respondent or, to the knowledge of the Respondent, threatened against the Respondent before or by any court, governmental body or agency or other tribunal or authority which would, if adversely determined, have a materially adverse effect on the authority or ability of Respondent to perform its obligations under this Contract, or which question the legality, validity or enforceability hereof or thereof.
18. Contractor understands and agrees that its employees, agents, or subcontractors are not employees of LFUCG for any purpose whatsoever. Contractor is an independent contractor at all times during the performance of the services specified.
19. If any term or provision of this Contract shall be found to be illegal or unenforceable, the remainder of the contract shall remain in full force and such term or provision shall be deemed stricken.



Signature



Date

**RISK MANAGEMENT PROVISIONS
INSURANCE AND INDEMNIFICATION**

INDEMNIFICATION AND HOLD HARMLESS PROVISION

- (1) It is understood and agreed by the parties that Consultant hereby assumes the entire responsibility and liability for any and all damages to persons or property caused by or resulting from or arising out of any act or omission on the part of Consultant or its employees, agents, servants, owners, principals, licensees, assigns or subcontractors of any tier (hereinafter "Consultant") under or in connection with this agreement and/or the provision of goods or services and the performance or failure to perform any work required thereby.
- (2) Consultant shall indemnify, save, hold harmless and defend the Lexington-Fayette Urban County Government and its elected and appointed officials, employees, agents, volunteers, and successors in interest (hereinafter "LFUCG") from and against all liability, damages, and losses, including but not limited to, demands, claims, obligations, causes of action, judgments, penalties, fines, liens, costs, expenses, interest, defense costs and reasonable attorney's fees that are in any way incidental to or connected with, or that arise or are alleged to have arisen, directly or indirectly, from or by Consultant's performance or breach of the agreement and/or the provision of goods or services provided that: (a) it is attributable to personal injury, bodily injury, sickness, or death, or to injury to or destruction of property (including the loss of use resulting therefrom), or to or from the negligent acts, errors or omissions or willful misconduct of the Consultant; and (b) not caused solely by the active negligence or willful misconduct of LFUCG.
- (3) Notwithstanding, the foregoing, with respect to any professional services performed by Consultant hereunder (and to the fullest extent permitted by law), Consultant shall indemnify, save, hold harmless and defend LFUCG from and against any and all liability, damages and losses, including but not limited to, demands, claims, obligations, causes of action, judgments, penalties, fines, liens, costs, expenses, interest, defense costs and reasonable attorney's fees, for any damage due to death or injury to any person or injury to any property (including the loss of use resulting therefrom) to the extent arising out of, pertaining to or relating to the negligence, recklessness or willful misconduct of Consultant in the performance of this agreement.
- (4) In the event LFUCG is alleged to be liable arising out of Consultant's negligence, Consultant shall defend such allegations and shall bear all costs, fees and expenses of such defense, including but not limited to, all reasonable attorneys' fees and expenses, court costs, and expert witness fees and expenses.
- (5) These provisions shall in no way be limited by any financial responsibility or insurance requirements, and shall survive the termination of this agreement.
- (6) LFUCG is a political subdivision of the Commonwealth of Kentucky. Consultant acknowledges and agrees that LFUCG is unable to provide indemnity or otherwise save, hold harmless, or defend the Consultant in any manner.

FINANCIAL RESPONSIBILITY

Consultant understands and agrees that it shall, prior to final acceptance of its proposal and the commencement of any work or services, demonstrate the ability to assure compliance with the above Indemnity provisions and these other risk management provisions.

INSURANCE REQUIREMENTS

YOUR ATTENTION IS DIRECTED TO THE INSURANCE REQUIREMENTS BELOW, AND YOU MAY NEED TO CONFER WITH YOUR INSURANCE AGENTS, BROKERS, OR CARRIERS TO DETERMINE IN ADVANCE OF SUBMISSION OF A RESPONSE THE AVAILABILITY OF THE INSURANCE COVERAGES AND ENDORSEMENTS REQUIRED HEREIN. IF YOU FAIL TO COMPLY WITH THE INSURANCE REQUIREMENTS BELOW, YOU MAY BE DISQUALIFIED FROM AWARD OF THE CONTRACT.

Required Insurance Coverage

Consultant shall procure and maintain for the duration of this contract the following or equivalent insurance policies at no less than the limits shown below and cause its subcontractors to maintain similar insurance with limits acceptable to LFUCG in order to protect LFUCG against claims for injuries to persons or damages to property which may arise from or in connection with the performance of the work or services hereunder by Consultant. The cost of such insurance shall be included in any bid:

<u>Coverage</u>	<u>Limits</u>
General Liability (Insurance Services Office Form CG 00 01)	\$1 million per occurrence, \$2 million aggregate or \$2 million combined single limit
Commercial Automobile Liability (Insurance Services Office Form CA 0001)	combined single, \$1 million per occurrence
Professional Liability aggregate	\$1 million per occurrence, \$2 million
Worker's Compensation	Statutory
Employer's Liability	\$500,000.00

The policies above shall contain the following conditions:

- a. All Certificates of Insurance forms used by the insurance carrier shall be properly filed and approved by the Department of Insurance for the Commonwealth of Kentucky. LFUCG shall be named as an additional insured in the General Liability Policy and Commercial Automobile Liability Policy using the Kentucky DOI approved forms.
- b. The General Liability Policy shall be primary to any insurance or self-insurance retained by LFUCG.
- c. The General Liability Policy shall have a Professional Liability endorsement (including Errors and Omissions) for any services performed pursuant to the contract, and/or a separate Professional Liability Policy shall be obtained unless it is deemed not to apply by LFUCG.
- d. The General Liability Policy shall include a Products and Completed Operations endorsement or Premises and Operations Liability endorsement unless it is deemed not to apply by LFUCG.
- e. The Consultant must have Contractors Pollution Liability coverage in an amount of at least \$5 million, which may be provided through an umbrella policy.

- f. The Professional Liability policy shall be maintained for a minimum of three years beyond the completion date of the project, to the extent commercially available. If not commercially available, CONSULTANT shall notify LFUCG and obtain similar insurance that is commercially available and acceptable to LFUCG.
- g. LFUCG shall be provided at least 30 days advance written notice via certified mail, return receipt requested, in the event any of the required policies are canceled or non-renewed.
- h. Said coverage shall be written by insurers acceptable to LFUCG and shall be in a form acceptable to LFUCG. Insurance placed with insurers with a rating classification of no less than Excellent (A or A-) and a financial size category of no less than VIII, as defined by the most current Best's Key Rating Guide shall be deemed automatically acceptable.

Renewals

After insurance has been approved by LFUCG, evidence of renewal of an expiring policy must be submitted to LFUCG, and may be submitted on a manually signed renewal endorsement form. If the policy or carrier has changed, however, new evidence of coverage must be submitted in accordance with these Insurance Requirements.

Deductibles and Self-Insured Programs

IF YOU INTEND TO SUBMIT A SELF-INSURANCE PLAN IT MUST BE FORWARDED TO LEXINGTON-FAYETTE URBAN COUNTY GOVERNMENT, DIVISION OF RISK MANAGEMENT, 200 EAST MAIN STREET, LEXINGTON, KENTUCKY 40507 NO LATER THAN A MINIMUM OF FIVE (5) WORKING DAYS PRIOR TO THE RESPONSE DATE. Self-insurance programs, deductibles, and self-insured retentions in insurance policies are subject to separate approval by Lexington-Fayette Urban County Government's Division of Risk Management, upon review of evidence of Consultant's financial capacity to respond to claims. Any such programs or retentions must provide LFUCG with at least the same protection from liability and defense of suits as would be afforded by first-dollar insurance coverage. If Consultant satisfies any portion of the insurance requirements through deductibles, self-insurance programs, or self-insured retentions, Consultant agrees to provide Lexington-Fayette Urban County Government, Division of Risk Management, the following data prior to the final acceptance of bid and the commencement of any work:

- a. Latest audited financial statement, including auditor's notes.
- b. Any records of any self-insured trust fund plan or policy and related accounting statements.
- c. Actuarial funding reports or retained losses.
- d. Risk Management Manual or a description of the self-insurance and risk management program.
- e. A claim loss run summary for the previous five (5) years.
- f. Self-Insured Associations will be considered.

Verification of Coverage

Consultant agrees to furnish LFUCG with all applicable Certificates of Insurance signed by a person authorized by the insurer to bind coverage on its behalf prior to final award, and if requested, shall provide LFUCG copies of all insurance policies, including all endorsements.

Right to Review, Audit and Inspect

Consultant understands and agrees that LFUCG may review, audit and inspect any and all of its records and operations to insure compliance with these Insurance Requirements.

DEFAULT

Consultant understands and agrees that the failure to comply with any of these insurance, safety, or loss control provisions shall constitute default and that LFUCG may elect at its option any single remedy or penalty or any combination of remedies and penalties, as available, including but not limited to purchasing insurance and charging Consultant for any such insurance premiums purchased, or suspending or terminating the work.

00462532

APPENDIX F
RFP ADDENDA



Lexington-Fayette Urban County Government
DEPARTMENT OF FINANCE & ADMINISTRATION

Jim Gray
Mayor

William O'Mara
Commissioner

ADDENDUM #2

RFP Number: **#1-2015**

Date: February 17, 2015

Subject: Landfill Cap Design for Haley Pike Landfill

Address inquiries to:
Brian Marcum
(859) 258-3320

TO ALL PROSPECTIVE SUBMITTERS:

Please be advised of the following clarifications to the above referenced RFP:

Pre-RFP conference is postponed until Thursday, February 26, 2015, 2:00 pm, 4216 Hedger Lane, Lexington, KY.

Q&A has been extended until Friday, February 27, 2015, 10:00 am.

RFP opening is extended until Friday, March 6, 2015, 2:00 pm, 200 E Main St, Lexington, KY.

Todd Slatin, Director
Division of Central Purchasing

All other terms and conditions of the Bid and specifications are unchanged.
This letter should be signed, attached to and become a part of your Bid.

COMPANY NAME: Cornerstone Environmental Group, LLC

ADDRESS: 2456 Fortune Drive, Suite 170, Lexington, Ky. 40509

SIGNATURE OF BIDDER: James R. Wade



Lexington-Fayette Urban County Government
DEPARTMENT OF FINANCE & ADMINISTRATION

Jim Gray
Mayor

William O'Mara
Commissioner

ADDENDUM #3

RFP Number: **#1-2015**

Date: February 23, 2015

Subject: Engineering Services- Haley Pike
Cap Restoration Project

Address inquiries to:
Brian Marcum
(859) 258-3320

TO ALL PROSPECTIVE SUBMITTERS:

Please be advised of the following clarifications to the above referenced Bid:

Attached are the selection criteria with notes related to submittal information.

Todd Slatin, Director
Division of Central Purchasing

All other terms and conditions of the Bid and specifications are unchanged.
This letter should be signed, attached to and become a part of your Bid.

COMPANY NAME: Cornerstone Environmental Group, LLC

ADDRESS: 2456 Fortune Drive, Suite 170, Lexington, Ky. 40509

SIGNATURE OF BIDDER: Jamie R. Wade

Selection Criteria for RFP1-2015 Engineering Services – Haley Pike Cap Restoration Project

		Points
No. 1	Estimated Cost of Services	20
No. 2	Specialized experienced and technical competence of the person or firm (including joint venture or association) with the type of service required	30
No. 3	Capacity of the person or firm to perform the work, including any specialized services, within the time limitations	15
No.4	Past record and performance on contracts with the LFUCG or other governmental agencies and private industry with respect to such factors as control of cost, quality of work and ability to meet scheduling	10
No. 5	Familiarity with details of the project	15
No. 6	Degree of local employment to be provided by the person or firm in the performance of the contract by the person or firm	10
	Total Points	100

Submittals

Firms must show relevant experience in similar projects.

Individuals involved in the project shall demonstrate experience on similar projects or similar work. Project manager shall be identified with supporting experience documentation.

Past performance on projects must be shown under a governmental contract or governmental type specifications.

Firm's capacity to complete work in a timely manner with appropriate personnel shall be demonstrated.

Familiarity with the project shall be addressed.

Degree of local employment shall be shown along with MWDBE goal levels achieved and supporting good faith effort documentation.

Cost breakdown shall be shown as directed in the request for proposal.



Lexington-Fayette Urban County Government
DEPARTMENT OF FINANCE & ADMINISTRATION

Jim Gray
Mayor

William O'Mara
Commissioner

ADDENDUM #4

RFP Number: **#1-2015**

Date: March 4, 2015

Subject: Engineering Services- Haley Pike
Cap Restoration Project

Address inquiries to:
Brian Marcum
(859) 258-3320

TO ALL PROSPECTIVE SUBMITTERS:

Please be advised of the following clarifications to the above referenced Bid:

Pre bid meeting minutes:

1. Roughly how many acres?
 - a. Approximately 50
2. What % of the 50 acres has good cover?
 - a. Approximately 10 acres
3. What is date of aerial photos?
 - a. Spring 2013
4. Is the top the only points of concern? Sides OK? Do you want to look at whole area?
 - a. Yes, entire area
5. What about the soil borrow areas?
 - a. No
6. Do you have a borrow area for some soil?
 - a. Yes, across tracks (some amount but would need to know how much because may be limited)
7. When was cap finished – 2012?
 - a. Yes
8. When were previous phases completed – 2007/2008?
 - a. Yes we believe
9. Are the previous designs available?
 - a. Yes
 - b. What do you want? Elevations? Storm water controls? Etc?
10. Will this require surveys?
 - a. No
11. Any permits needed?
 - a. No, we just need sediment controls in place while doing work
12. Are the berms working?
 - a. Yes for the most part. One or two need some work and cleanout

13. How many settling ponds?
 - a. 2
14. What will the award date be?
 - a. As soon as possible
15. How close to liner has the erosion taken?
 - a. In most severe spots maybe as close as 18"
16. What's it supposed to have for cover?
 - a. 30 inches of clay and 6 inches of top soil cover
17. Do we need to contact Kentucky Div of Waste Mgt for anything?
 - a. No
18. Do you want CQA on site fulltime?
 - a. No, not needed. Weekly meetings should be sufficient.
19. Can we extend the date to complete the design work past May 15, 2015?
 - a. Design shall be completed by June 1, 2015.

Attached are the aerial photos and elevations of the site.



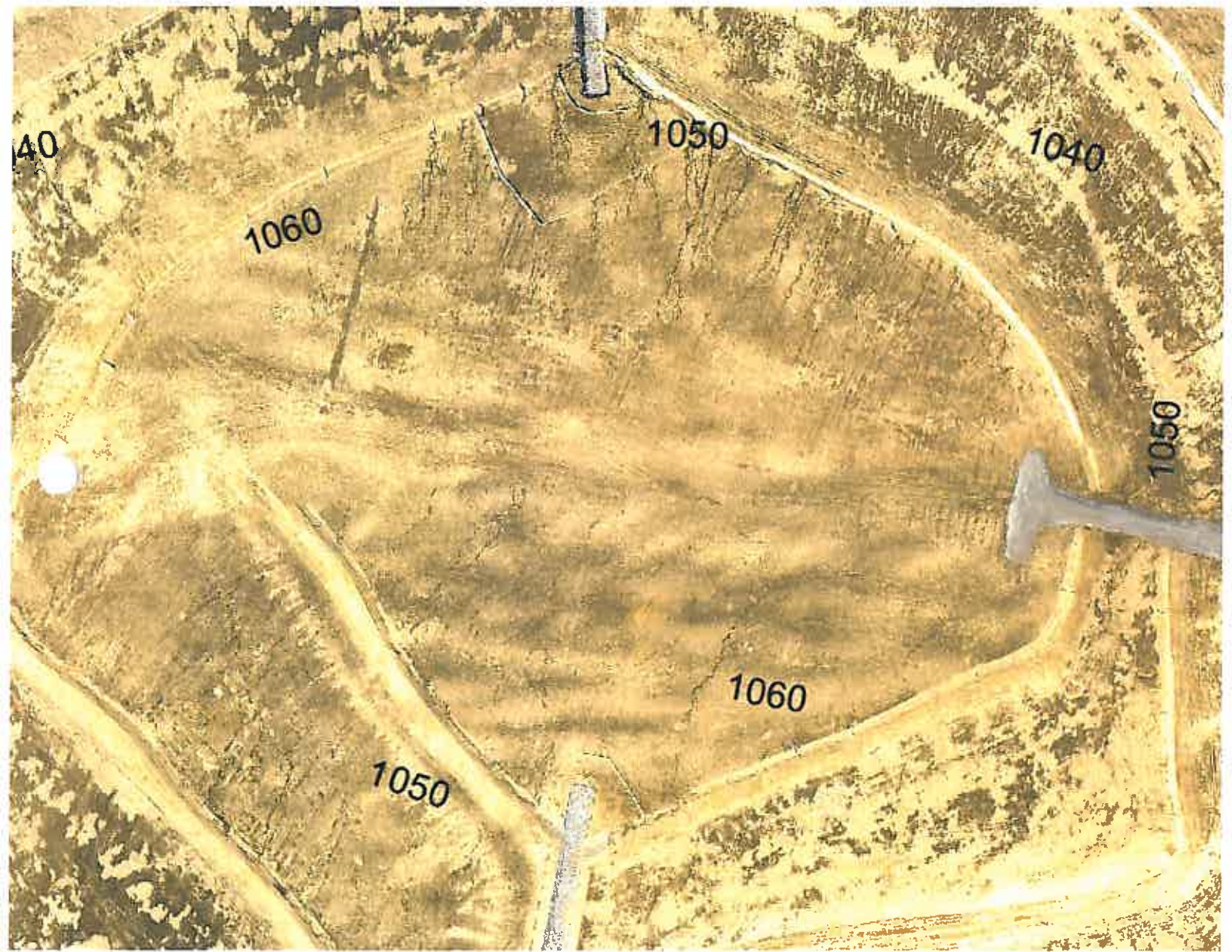
Todd Slatin, Director
Division of Central Purchasing

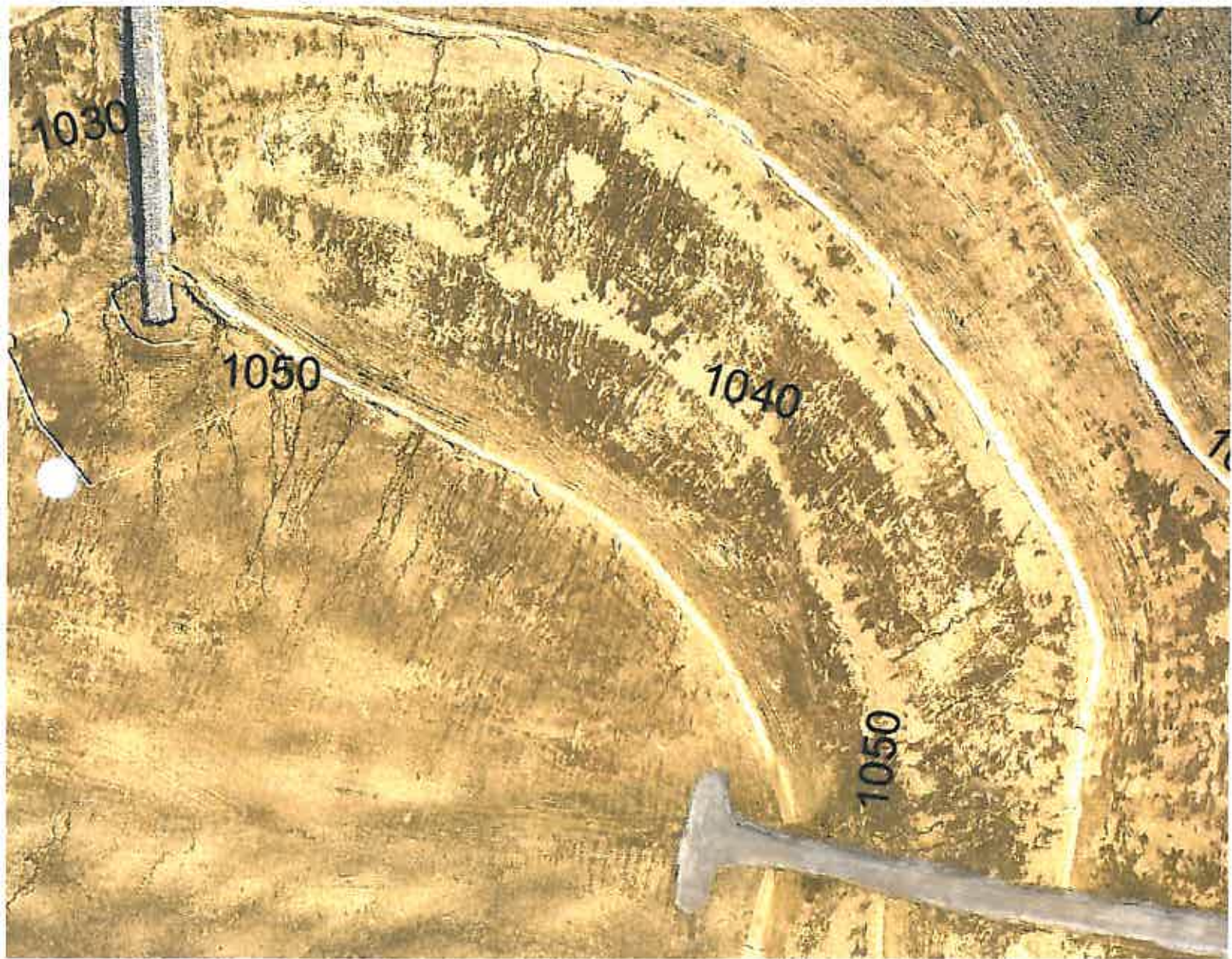
All other terms and conditions of the Bid and specifications are unchanged.
This letter should be signed, attached to and become a part of your Bid.

COMPANY NAME: Cornerstone Environmental Group, LLC

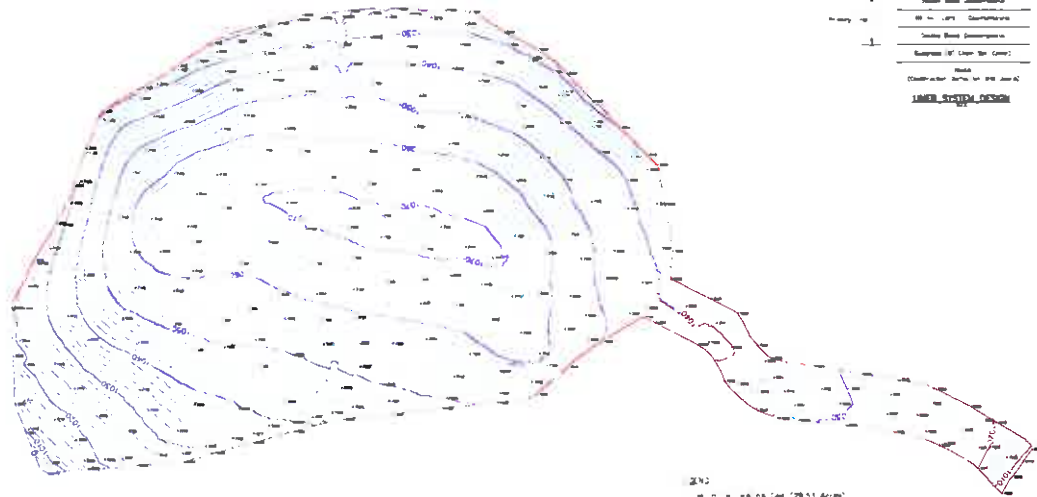
ADDRESS: 2456 Fortune Drive, Suite 170, Lexington, Ky. 40509

SIGNATURE OF BIDDER: James R. Wade









240
-90
11 feet
Record vegetation Cover: 100%
Record vegetation Cover: 100%
Record vegetation Cover: 100%

+	10' Contour Line
+	20' Contour Line
+	30' Contour Line
+	40' Contour Line
+	50' Contour Line
+	60' Contour Line
+	70' Contour Line
+	80' Contour Line
+	90' Contour Line
+	100' Contour Line
+	110' Contour Line
+	120' Contour Line
+	130' Contour Line
+	140' Contour Line
+	150' Contour Line
+	160' Contour Line
+	170' Contour Line
+	180' Contour Line
+	190' Contour Line
+	200' Contour Line
+	210' Contour Line
+	220' Contour Line
+	230' Contour Line
+	240' Contour Line
+	250' Contour Line
+	260' Contour Line
+	270' Contour Line
+	280' Contour Line
+	290' Contour Line
+	300' Contour Line
+	310' Contour Line
+	320' Contour Line
+	330' Contour Line
+	340' Contour Line
+	350' Contour Line
+	360' Contour Line
+	370' Contour Line
+	380' Contour Line
+	390' Contour Line
+	400' Contour Line
+	410' Contour Line
+	420' Contour Line
+	430' Contour Line
+	440' Contour Line
+	450' Contour Line
+	460' Contour Line
+	470' Contour Line
+	480' Contour Line
+	490' Contour Line
+	500' Contour Line
+	510' Contour Line
+	520' Contour Line
+	530' Contour Line
+	540' Contour Line
+	550' Contour Line
+	560' Contour Line
+	570' Contour Line
+	580' Contour Line
+	590' Contour Line
+	600' Contour Line
+	610' Contour Line
+	620' Contour Line
+	630' Contour Line
+	640' Contour Line
+	650' Contour Line
+	660' Contour Line
+	670' Contour Line
+	680' Contour Line
+	690' Contour Line
+	700' Contour Line
+	710' Contour Line
+	720' Contour Line
+	730' Contour Line
+	740' Contour Line
+	750' Contour Line
+	760' Contour Line
+	770' Contour Line
+	780' Contour Line
+	790' Contour Line
+	800' Contour Line
+	810' Contour Line
+	820' Contour Line
+	830' Contour Line
+	840' Contour Line
+	850' Contour Line
+	860' Contour Line
+	870' Contour Line
+	880' Contour Line
+	890' Contour Line
+	900' Contour Line
+	910' Contour Line
+	920' Contour Line
+	930' Contour Line
+	940' Contour Line
+	950' Contour Line
+	960' Contour Line
+	970' Contour Line
+	980' Contour Line
+	990' Contour Line
+	1000' Contour Line


PHASE 4 - CLOSURE
HALEY PIKE LANDFILL
LEXINGTON - FAYETTE COUNTY GOVERNMENT
FAYETTE COUNTY, KENTUCKY



DATE OF PLAN
DATE OF PLAN
SCALE: AS SHOWN

KENVIRONS, INC.
FRANKFORT, KENTUCKY



PROJECT NO.
2012083
SHEET NO.
2 of 3

RECORD PHASE 4 VEGETATIVE COVER

Request Addendum

Tue Mar 03, 2015
12:33 PM EST

Addendum

Request #: RFP1-2015

Addendum Title: Addendum#4

Date and Time Issued: 03/03/2015 12:21 PM EST

The proposal opening date has be extended to Monday March 9, 2015 at 2:00 PM.

Note: One of the files available for downloading might be a ZIP file. If you are running a computer older than Windows XP, your system may not have unzipping capabilities. [Follow this link to download WinZip](#), a third-party zipping service.
