

# TOWN BRANCH PARK, INC. (PLN-MAR-22-00001)

131 AND 150 TUCKER STREET

Rezoning the properties to allow for the construction of the Town Branch Park and associated amenities.

## Applicant

TOWN BRANCH PARK, INC.  
249 E. Main Street  
Lexington, KY 40507  
mike@townbranchpark.org



## Owner

LEXINGTON CENTER CORP.  
430 W. Vine Street  
Lexington, KY 40507



## Application Details

### Acreage:

Parcel 1: 9.23 net (12.73 gross) acres  
Parcel 2: 0.00 net (0.08 gross) acres  
Parcel 3: 0.00 net (0.13 gross) acres

### Current Zoning:

Parcel 1: Light Industrial (I-1) zone  
Parcel 2: Two-Family Residential (R-2) zone  
Parcel 3: Light Industrial (I-1) zone

### Proposed Zoning:

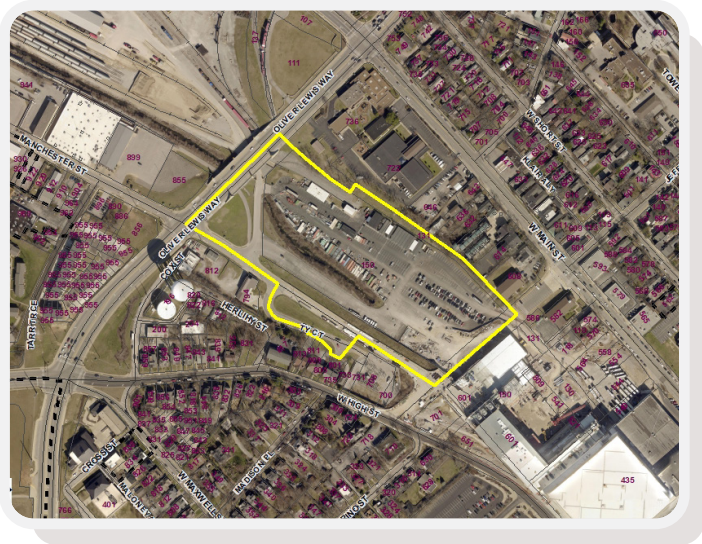
Parcel 1 & 2: Lexington Center Business (B-2B) zone  
Parcel 3: Two-Family Residential (R-2) zone

### Place-type / Development Type:

Downtown  
High Density Non-Residential / Mixed-Use  
For more information about the Downtown Place-Type see *Imagine Lexington* pages 273-274. For more information about the High Density Non-Residential / Mixed Use Development Type see page 272.

### Description:

The applicant is seeking to rezone the subject property in an effort to develop the Town Branch Park, with amenities to include a cafe, amphitheater, playground, bike/pedestrian facilities, and a dog park.



## Public Engagement

- The applicant and their representatives have conducted outreach throughout the development of the plan. Outreach included: surveys, inperson and virtual meetings, and targeted focus groups.

## Status

- Public Engagement
- Pre-Application Meeting
- Application Review
- Planning Staff Review
- Technical Review Committee
- Zoning/Subdivision Committee Meetings
- Planning Commission Hearing
- Urban County Council Meeting

DISCLAIMER: Plans are subject to change. Visit the Accela Citizen Portal ([lexingtonky.gov/plans](http://lexingtonky.gov/plans)) or contact Planning for the latest information.

