

**LEXINGTON-FAYETTE URBAN COUNTY
GOVERNMENT CONTRACT CHANGE ORDER**
Page 1 of 2

To (Contractor):

Riddell Construction Inc.
4245 Richmond Road
Irvine, KY 40336

Date: April 8, 2015

Project: Coroner/CAC Renovation

Location: Community Action Center

Contract No. 338-2014

Original Contract Amt. \$597,720.00

Cumulative Amount of
Previous Change Orders \$0.00

Percent Change - Previous
Change Orders

Total Contract Amount Prior
to this Change Order \$597,720.00

Change Order No. 1

0.00%

You are hereby requested to comply with the following changes from the contract plans and specification;

Current Change Order

Item No.	Description of changes-quantities, unit prices, change in completion date, etc.	Decrease in contract price	Increase in contract price
1	Time Extension of 5 working days		\$0.00
2	Time Extension of 3 working days		\$0.00
3	Deletion of rated door and infill with drywall. Modify circuits for surface mounting of existing panelboard. Net credit to project	\$247.62	\$0.00
	Total decrease	\$247.62	
	Total increase		\$0.00
	Net Amount of this Change Order	(\$247.62)	
	New Contract Amount Including this Change Order	\$597,472.38	
	Percent Change - This Change Order		-0.04%
	Percent Change - All Change Orders		-0.04%

The time provided for the completion in the contract and all provisions of the contract will apply hereto.

Recommended by - Jessica Walker	(Proj. Mgr.)	Date 4/8/2015
Accepted by <i>[Signature]</i>	(Contractor)	Date 4/14/2015
Approved by <i>[Signature]</i>	(Director)	Date 4/17/15
Approved by <i>[Signature]</i>	(Commissioner)	Date 4/17/15
Approved by <i>[Signature]</i>	(Mayor or CAO)	Date



- Owner
- Architect
- Contractor
- Field
- Other

CHANGE ORDER

Project: CAC & Coroner reroof
Community Action Center reroof
Georgetown Street
Lexington, KY

Change Order Number: 1 REVISED

Initiation Date: 03/10/2015

To: Riddell Construction Inc.
4245 Richmond Rd
Irvine, KY 40336

File Number: 201418.doc

Contract For:

Contract Date: February 02, 2015

You are directed to make the following changes in the contract:

Time extension of five (5) days are added to the contract due to inclement weather, see attached documentation.

Not valid until signed by both the Owner and The Architect.

Signature of the Contractor indicates hid agreement herewith, including any adjustments in the Contract or contract Time.

The original (Contract Sum) (Guaranteed Maximum Cost) was.....	\$ 597,720.00
Net change by previous authorized Change Orders.....	\$ 0000.00
The original (Contract Sum) (Guaranteed Maximum Cost) prior to this Change Order was.....	\$597,720.00
The original (Contract Sum) (Guaranteed Maximum Cost) will by (increased) (decreased) (unchanged) by this change order.....	\$597,720.00
The New (Contract Sum) (Guaranteed Maximum Cost) including this Change Order will be.....	\$0.00
The Contract time will be (increased) (decrease) (unchanged) by five (5) days	
The Date of Substantial completion as of the date of this Change Order therefore is June 2, 2015	

Authorized:

Architect:
Kesler Simpson Architects, LLC
3728 Willow Ridge Rd
Lexington, Kentucky 40514
Date: 3-11-15

Contractor:
Riddell Const. Inc
4245 Rich Rd.
Irvine, Ky. 40336
Date: 4/14/15

Owner:
Lexington-Fayette Urban Co. Govt.
200 East Main Street, 4th Floor
Lexington, Kentucky 40507
Date: 4/8/2015

RIDDELL CONSTRUCTION INC.
4245 RICHMOND ROAD
IRVINE, KY 40336
606-723-5800
606-723-7800 FAX

March 3, 2015

Kesler Simpson Architects
706 Westland Drive
Lexington, KY 40504

Project: Coroner Office and CAC Reroof
RE: Contract Extension For Adverse Weather Delays

We have experienced adverse weather conditions that prevented work on the roof portion of the project from the start date of this project, February 2nd, and as of today the weather conditions are preventing any roof work from occurring. During the week of February 16th thru the 20th we were unable to do any work on the project due to the large amount of snow we received. We would please ask that the contract be extended by 5 fair weather working days lost during this period. We would also like to ask that the weather delays for the roofing portion of this project be noted and once the roofing starts any of the lost days be added to the contract period if necessary to complete the roof work or any work item affected by the roof work.

Respectfully,

Brandon Henson



NATIONAL WEATHER SERVICE

NATIONAL OCEANIC AND ATMOSPHERIC ADMINISTRATION










HAZARDOUS WEATHER CONDITIONS

Special Weather Statement is in effect
Hazardous Weather Outlook is in effect

4 Miles SSW Lexington KY 7 Day Forecast

For More Weather Information:

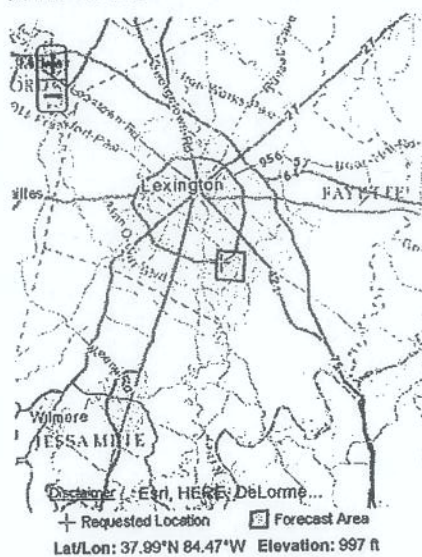
[Louisville, KY Local Forecast Office](#)

TODAY	TONIGHT	TUESDAY	TUESDAY NIGHT	WEDNESDAY	WEDNESDAY NIGHT	THURSDAY	THURSDAY NIGHT	FRIDAY
 30%					 50%	 50%	 20%	
Chance Snow High: 30 °F	Partly Cloudy Low: 20 °F	Mostly Sunny High: 39 °F	Partly Cloudy Low: 29 °F	Mostly Sunny High: 46 °F	Chance Rain/Snow Low: 21 °F	Chance Snow High: 28 °F	Slight Chc Snow Low: 14 °F	Sunny High: 38 °F

Detailed Forecast

- Today** Scattered snow showers before 10am, then a chance for flurries before ending. Mostly cloudy, with a high near 30. Northwest wind 11 to 16 mph, with gusts as high as 30 mph. Chance of precipitation is 30%.
- Tonight** Partly cloudy, with a low around 20. Northwest wind 5 to 7 mph becoming calm in the evening.
- Tuesday** Mostly sunny, with a high near 39. Southwest wind 5 to 9 mph.
- Tuesday Night** Partly cloudy, with a low around 29. South wind 5 to 8 mph.
- Wednesday** Mostly sunny, with a high near 46. Southwest wind 8 to 11 mph.
- Wednesday Night** A chance of rain and snow between 8pm and 2am, then a chance of snow after 2am. Mostly cloudy, with a low around 21. Chance of precipitation is 50%. New precipitation amounts of less than a tenth of an inch possible.
- Thursday** A 50 percent chance of snow, mainly before 8am. Partly sunny, with a high near 28.
- Thursday Night** A 20 percent chance of snow. Mostly clear, with a low around 14.
- Friday** Sunny, with a high near 38.
- Friday Night** Partly cloudy, with a low around 30.
- Saturday** Partly sunny, with a high near 46.
- Saturday Night** A 30 percent chance of rain. Mostly cloudy, with a low around 35.
- Sunday** A 40 percent chance of rain. Cloudy, with a high near 46.

Topographic Click Map For Forecast

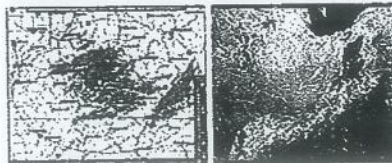


ABOUT THIS FORECAST

Point Forecast: Point Forecast: 4 Miles SSW Lexington KY
 37.99°N 84.47°W (Elev. 997 ft)
Last Update: 6:20 am EST Feb 2, 2015
Forecast Valid: 9am EST Feb 2, 2015-6pm EST Feb 8, 2015
[Forecast Discussion](#)

KML XML

RADAR & SATELLITE IMAGES





NATIONAL WEATHER SERVICE

NATIONAL OCEANIC AND ATMOSPHERIC ADMINISTRATION

4 Miles SSW Lexington KY 7 Day Forecast

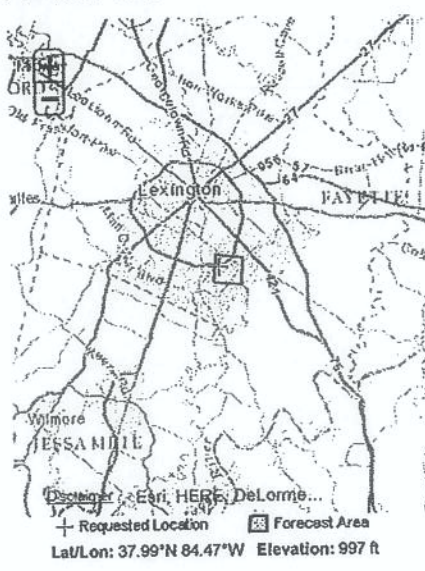
For More Weather Information:
[Louisville, KY Local Forecast Office](#)

TODAY	TONIGHT	WEDNESDAY	WEDNESDAY NIGHT	THURSDAY	THURSDAY NIGHT	FRIDAY	FRIDAY NIGHT	SATURDAY
Sunny High: 39 °F	Partly Cloudy Low: 29 °F	Mostly Sunny High: 46 °F	Rain/Snow Low: 21 °F	Chance Snow High: 25 °F	Mostly Clear Low: 13 °F	Mostly Sunny High: 38 °F	Partly Cloudy Low: 30 °F	Partly Sunny High: 48 °F

Detailed Forecast

- Today** Sunny, with a high near 39. Southwest wind 7 to 9 mph.
- Tonight** Partly cloudy, with a low around 29. South wind 6 to 9 mph.
- Wednesday** Mostly sunny, with a high near 46. Southwest wind 9 to 11 mph.
- Wednesday Night** Rain and snow likely before midnight, then snow. Low around 21. West wind 7 to 10 mph becoming north after midnight. Chance of precipitation is 80%. New snow accumulation of around an inch possible.
- Thursday** A 30 percent chance of snow, mainly before 7am. Partly sunny and cold, with a high near 25. North wind 9 to 11 mph.
- Thursday Night** Mostly clear, with a low around 13.
- Friday** Mostly sunny, with a high near 38.
- Friday Night** Partly cloudy, with a low around 30.
- Saturday** Partly sunny, with a high near 48.
- Saturday Night** A 30 percent chance of rain. Mostly cloudy, with a low around 36.
- Sunday** A 40 percent chance of rain. Cloudy, with a high near 50.
- Sunday Night** A chance of snow. Mostly cloudy, with a low around 23. Chance of precipitation is 30%.
- Monday** Partly sunny, with a high near 34.

Topographic Click Map For Forecast



ABOUT THIS FORECAST

Point Forecast: Point Forecast: 4 Miles SSW Lexington KY
37.99°N 84.47°W (Elev. 997 ft)

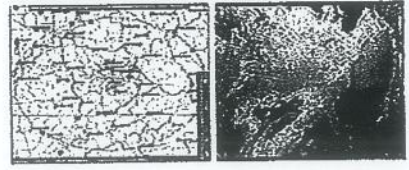
Last Update: 6:11 am EST Feb 3, 2015

Forecast Valid: 9am EST Feb 3, 2015-6pm EST Feb 9, 2015

[Forecast Discussion](#)

[KML](#) [XML](#)

RADAR & SATELLITE IMAGES





NATIONAL WEATHER SERVICE

NATIONAL OCEANIC AND ATMOSPHERIC ADMINISTRATION

HAZARDOUS WEATHER CONDITIONS

Special Weather Statement is in effect
Hazardous Weather Outlook is in effect

Lexington KY

7 Day Forecast

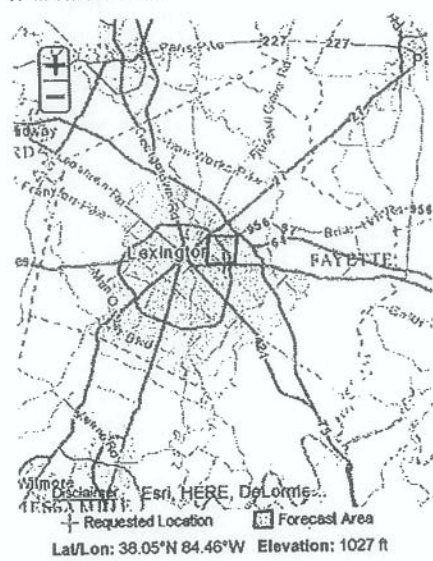
For More Weather Information:
[Louisville, KY Local Forecast Office](#)

TODAY	TONIGHT	FRIDAY	FRIDAY NIGHT	SATURDAY	SATURDAY NIGHT	SUNDAY	SUNDAY NIGHT	MONDAY
Sunny	Mostly Clear	Mostly Sunny	Partly Cloudy	Mostly Sunny	Slight Chc Rain	Chance Rain	Chance Rain/Snow	Slight Chc Rain/Snow
High: 26 °F	Low: 16 °F	High: 41 °F	Low: 31 °F	High: 53 °F	Low: 42 °F	High: 52 °F	Low: 37 °F	High: 42 °F
					20%	40%	40%	20%

Detailed Forecast

Today	Sunny, with a high near 26. Wind chill values as low as 7. North wind 7 to 11 mph.
Tonight	Mostly clear, with a low around 16. Wind chill values as low as 9. Northeast wind around 5 mph becoming light and variable.
Friday	Mostly sunny, with a high near 41. Wind chill values as low as 10. Southwest wind 6 to 10 mph.
Friday Night	Partly cloudy, with a low around 31. South wind 6 to 8 mph.
Saturday	Mostly sunny, with a high near 53. Southwest wind 9 to 13 mph.
Saturday Night	A 20 percent chance of rain after 1am. Mostly cloudy, with a low around 42.
Sunday	A 40 percent chance of rain. Cloudy, with a high near 52.
Sunday Night	A chance of rain and snow. Cloudy, with a low around 37. Chance of precipitation is 40%.
Monday	A slight chance of rain and snow. Mostly cloudy, with a high near 42. Chance of precipitation is 20%.
Monday Night	Mostly cloudy, with a low around 23.
Tuesday	Mostly sunny, with a high near 37.
Tuesday Night	Partly cloudy, with a low around 26.
Wednesday	Mostly sunny, with a high near 47.

Topographic Click Map For Forecast

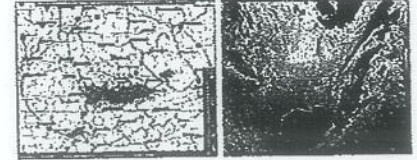


ABOUT THIS FORECAST

Point Forecast: Point Forecast: Lexington
 KY Similar City Names
 38.05°N 84.46°W (Elev. 1027 ft)
 Last Update: 6:25 am EST Feb 5, 2015
 Forecast Valid: 9am EST Feb 5, 2015-6pm EST Feb 11, 2015
[Forecast Discussion](#)

[KML](#) [XML](#)

RADAR & SATELLITE IMAGES





NATIONAL WEATHER SERVICE

NATIONAL OCEANIC AND ATMOSPHERIC ADMINISTRATION

HAZARDOUS WEATHER CONDITIONS

Special Weather Statement is in effect
Hazardous Weather Outlook is in effect

4 Miles SSW Lexington KY 7 Day Forecast

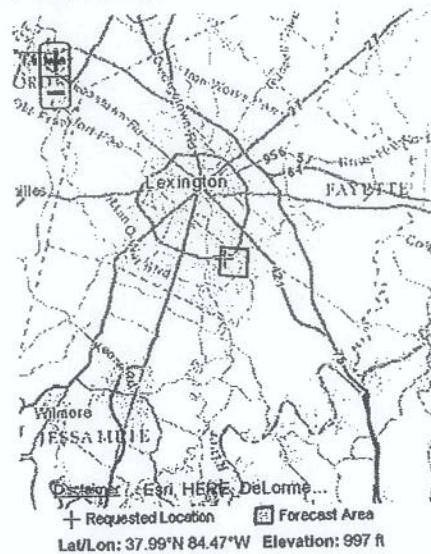
For More Weather Information:
[Louisville, KY Local Forecast Office](#)

TODAY	TONIGHT	FRIDAY	FRIDAY NIGHT	SATURDAY	SATURDAY NIGHT	SUNDAY	SUNDAY NIGHT	MONDAY
Sunny High: 26 °F	Mostly Clear Low: 16 °F	Mostly Sunny High: 41 °F	Partly Cloudy Low: 30 °F	Mostly Sunny High: 53 °F	Slight Chc Rain Low: 42 °F	Chance Rain High: 62 °F	Chance Rain/Snow Low: 37 °F	Slight Chc Rain/Snow High: 43 °F

Detailed Forecast

Today	Sunny, with a high near 26. Wind chill values as low as 7. North wind 7 to 10 mph.
Tonight	Mostly clear, with a low around 16. Wind chill values as low as 9. Northeast wind around 5 mph becoming light and variable.
Friday	Mostly sunny, with a high near 41. Wind chill values as low as 9. Southwest wind 6 to 10 mph.
Friday Night	Partly cloudy, with a low around 30. South wind 6 to 8 mph.
Saturday	Mostly sunny, with a high near 53. Southwest wind 8 to 13 mph.
Saturday Night	A 20 percent chance of rain after 1am. Mostly cloudy, with a low around 42.
Sunday	A 40 percent chance of rain. Cloudy, with a high near 52.
Sunday Night	A chance of rain and snow. Cloudy, with a low around 37. Chance of precipitation is 40%.
Monday	A slight chance of rain and snow. Mostly cloudy, with a high near 43. Chance of precipitation is 20%.
Monday Night	Mostly cloudy, with a low around 23.
Tuesday	Mostly sunny, with a high near 37.
Tuesday Night	Partly cloudy, with a low around 26.
Wednesday	Mostly sunny, with a high near 47.

Topographic Click Map For Forecast

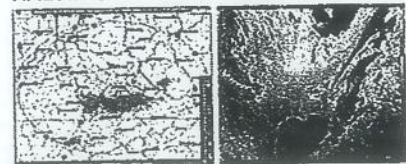


ABOUT THIS FORECAST

Point Forecast: Point Forecast: 4 Miles SSW Lexington KY
 37.99°N 84.47°W (Elev. 997 ft)
Last Update: 8:22 am EST Feb 5, 2015
Forecast Valid: 9am EST Feb 5, 2015-6pm EST Feb 11, 2015
[Forecast Discussion](#)

[KML](#) [XML](#)

RADAR & SATELLITE IMAGES





NATIONAL WEATHER SERVICE

NATIONAL OCEANIC AND ATMOSPHERIC ADMINISTRATION

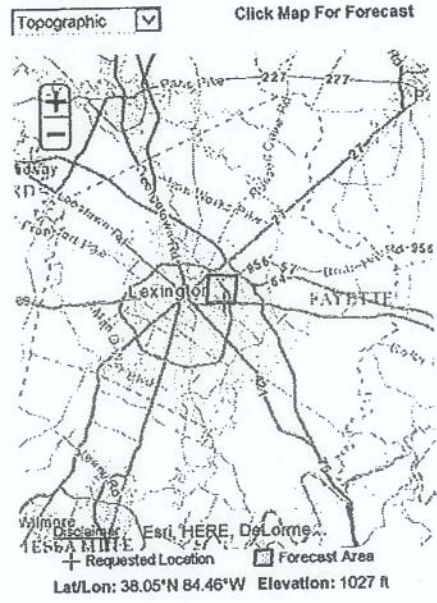
Lexington KY 7 Day Forecast

For More Weather Information:
[Louisville, KY Local Forecast Office](#)

TODAY	TONIGHT	SATURDAY	SATURDAY NIGHT	SUNDAY	SUNDAY NIGHT	MONDAY	MONDAY NIGHT	TUESDAY
Mostly Sunny High: 41 °F	Partly Cloudy Low: 31 °F	Mostly Sunny High: 54 °F	Partly Cloudy Low: 42 °F	Chance Showers High: 54 °F	Chance Showers Low: 37 °F	Slight Chc Rain High: 39 °F	Mostly Cloudy Low: 24 °F	Mostly Sunny High: 41 °F

Detailed Forecast

Today	Mostly sunny, with a high near 41. Southwest wind 7 to 9 mph.
Tonight	Partly cloudy, with a low around 31. South wind 6 to 9 mph.
Saturday	Mostly sunny, with a high near 54. Southwest wind 10 to 14 mph.
Saturday Night	Partly cloudy, with a low around 42. Southwest wind around 11 mph.
Sunday	A 40 percent chance of showers. Mostly cloudy, with a high near 54. Southwest wind 11 to 15 mph.
Sunday Night	A 40 percent chance of showers. Mostly cloudy, with a low around 37.
Monday	A 20 percent chance of rain. Mostly cloudy, with a high near 39.
Monday Night	Mostly cloudy, with a low around 24.
Tuesday	Mostly sunny, with a high near 41.
Tuesday Night	Partly cloudy, with a low around 28.
Wednesday	Partly sunny, with a high near 49.
Wednesday Night	A slight chance of rain and snow showers. Mostly cloudy, with a low around 27. Chance of precipitation is 20%.
Thursday	Partly sunny, with a high near 31.

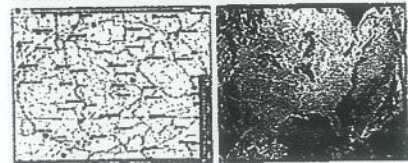


ABOUT THIS FORECAST

Point Forecast: Point Forecast: Lexington
 KY [Similar City Names](#)
 38.05°N 84.46°W (Elev. 1027 ft)
 Last Update: 4:13 am EST Feb 6, 2015
 Forecast Valid: 9am EST Feb 6, 2015-6pm EST Feb 12, 2015
[Forecast Discussion](#)

[KML](#) [XML](#)

RADAR & SATELLITE IMAGES





NATIONAL WEATHER SERVICE










NATIONAL OCEANIC AND ATMOSPHERIC ADMINISTRATION

HAZARDOUS WEATHER CONDITIONS

Special Weather Statement is in effect
Hazardous Weather Outlook is in effect

4 Miles SSW Lexington KY 7 Day Forecast

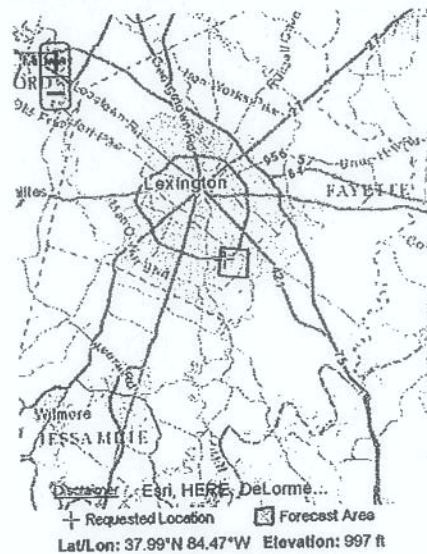
For More Weather Information:
[Louisville, KY Local Forecast Office](#)

TODAY	TONIGHT	FRIDAY	FRIDAY NIGHT	SATURDAY	SATURDAY NIGHT	SUNDAY	SUNDAY NIGHT	WASHINGTON'S BIRTHDAY
 40%				 30%				 20%
Chance Snow High: 27 °F	Chance Flurries Low: 11 °F	Chance Flurries High: 28 °F	Chance Flurries Low: 23 °F	Chance Snow High: 32 °F	Chance Flurries Low: 7 °F	Cold High: 17 °F	Mostly Clear Low: 6 °F	Slight Chc Snow High: 29 °F

Detailed Forecast

Today	Scattered snow showers, mainly before 3pm, then a chance for flurries. Mostly cloudy, with a high near 27. Wind chill values as low as 9. Blustery, with a northwest wind 20 to 22 mph, with gusts as high as 33 mph. Chance of precipitation is 40%.
Tonight	A chance of flurries before 8pm. Mostly cloudy, with a low around 11. Wind chill values as low as 4. Northwest wind 6 to 14 mph.
Friday	A chance of flurries after 3pm. Partly sunny, with a high near 28. Wind chill values as low as 6. Light and variable wind becoming southwest 5 to 7 mph in the morning.
Friday Night	A chance of flurries before 7pm. Mostly cloudy, with a low around 23. Southwest wind 6 to 8 mph.
Saturday	A 30 percent chance of snow showers. Partly sunny, with a high near 32. Breezy, with a southwest wind 11 to 21 mph, with gusts as high as 29 mph.
Saturday Night	A chance of flurries. Partly cloudy, with a low around 7.
Sunday	Mostly sunny and cold, with a high near 17.
Sunday Night	Mostly clear, with a low around 6.
Washington's Birthday	A 20 percent chance of snow. Partly sunny, with a high near 29.
Monday Night	Snow likely. Cloudy, with a low around 24. Chance of precipitation is 70%.
Tuesday	Rain and snow likely. Cloudy, with a high near 37. Chance of precipitation is 70%.
Tuesday Night	A chance of snow. Cloudy, with a low around 18. Chance of precipitation is 50%.
Wednesday	Mostly cloudy and cold, with a high near 25.

Topographic Click Map For Forecast

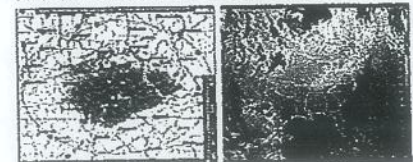


ABOUT THIS FORECAST

Point Forecast: Point Forecast: 4 Miles SSW Lexington KY
 37.99°N 84.47°W (Elev. 997 ft)
Last Update: 9:21 am EST Feb 12, 2015
Forecast Valid: 11am EST Feb 12, 2015-6pm EST Feb 18, 2015
[Forecast Discussion](#)

[KML](#) [XML](#)

RADAR & SATELLITE IMAGES





NATIONAL WEATHER SERVICE

NATIONAL OCEANIC AND ATMOSPHERIC ADMINISTRATION

4 Miles SSW Lexington KY 7 Day Forecast

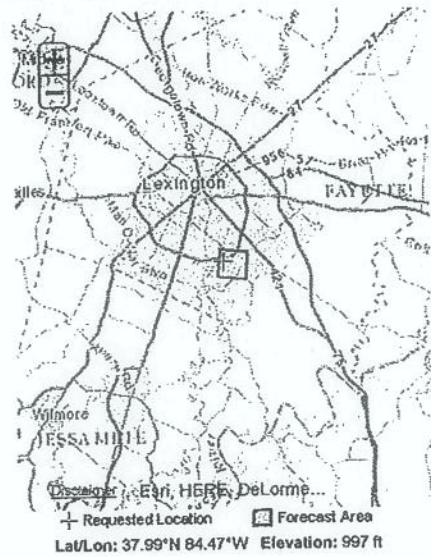
For More Weather Information:
[Louisville, KY Local Forecast Office](#)

TODAY	TONIGHT	SATURDAY	SATURDAY NIGHT	SUNDAY	SUNDAY NIGHT	WASHINGTON'S BIRTHDAY	MONDAY NIGHT	TUESDAY
Partly Sunny High: 30 °F	Mostly Cloudy Low: 24 °F	Chance Snow High: 33 °F	Slight Chc Snow Low: 6 °F	Cold High: 19 °F	Mostly Cloudy Low: 11 °F	Slight Chc Snow High: 25 °F	Mostly Cloudy Low: 18 °F	Mostly Cloudy High: 32 °F

Detailed Forecast

Today	Partly sunny, with a high near 30. Light and variable wind becoming southwest 5 to 7 mph in the afternoon.
Tonight	Mostly cloudy, with a low around 24. Southwest wind 6 to 10 mph.
Saturday	A 40 percent chance of snow showers, mainly after 1pm. Mostly cloudy, with a high near 33. Breezy, with a southwest wind 11 to 21 mph becoming northwest in the afternoon. Winds could gust as high as 29 mph.
Saturday Night	A 10 percent chance of snow before 1am. Partly cloudy, with a low around 6. Wind chill values as low as -7. Northwest wind 9 to 18 mph, with gusts as high as 26 mph.
Sunday	Mostly sunny and cold, with a high near 19. North wind 7 to 9 mph.
Sunday Night	Mostly cloudy, with a low around 11.
Washington's Birthday	A 20 percent chance of snow. Partly sunny and cold, with a high near 25.
Monday Night	Mostly cloudy, with a low around 18.
Tuesday	Mostly cloudy, with a high near 32.
Tuesday Night	A 20 percent chance of snow. Mostly cloudy, with a low around 12.
Wednesday	A 20 percent chance of snow. Mostly sunny and cold, with a high near 22.
Wednesday Night	Partly cloudy, with a low around 10.
Thursday	Mostly sunny, with a high near 26.

Topographic Click Map For Forecast

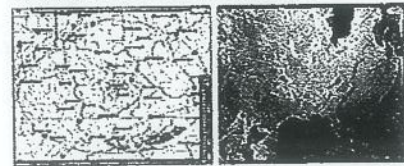


ABOUT THIS FORECAST

Point Forecast: Point Forecast: 4 Miles SSW Lexington KY
37.99°N 84.47°W (Elev. 997 ft)
Last Update: 8:41 am EST Feb 13, 2015
Forecast Valid: 9am EST Feb 13, 2015-6pm EST Feb 19, 2015
[Forecast Discussion](#)

[KML](#) [XML](#)

RADAR & SATELLITE IMAGES





NATIONAL WEATHER SERVICE

NATIONAL OCEANIC AND ATMOSPHERIC ADMINISTRATION

HAZARDOUS WEATHER CONDITIONS

Winter Storm Warning is in effect until February 17, 01:00 AM EST
Hazardous Weather Outlook is in effect

Lexington KY

7 Day Forecast

WASHINGTON'S BIRTHDAY	TONIGHT	TUESDAY	TUESDAY NIGHT	WEDNESDAY	WEDNESDAY NIGHT	THURSDAY	THURSDAY NIGHT	FRIDAY
100%	80%		30%	50%	20%			
Heavy Snow High: 17 °F	Snow Low: 9 °F	Cold High: 22 °F	Chance Snow Low: 3 °F	Chance Snow High: 12 °F	Slight Chc Snow Low: -8 °F	Cold High: 7 °F	Partly Cloudy Low: -8 °F	Cold High: 20 °F

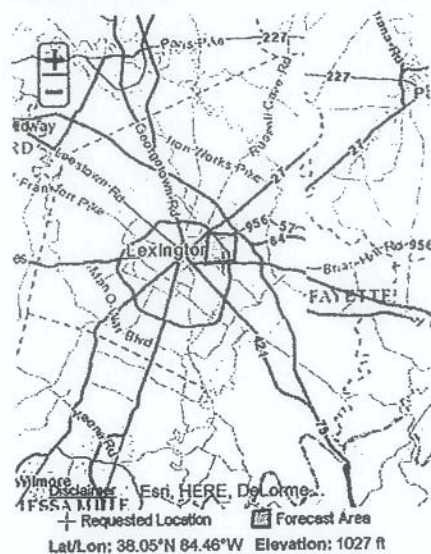
For More Weather Information:

[Louisville, KY Local Forecast Office](#)

Detailed Forecast

- Washington's Birthday** Snow. The snow could be heavy at times. High near 17. Wind chill values as low as zero. East wind around 9 mph. Chance of precipitation is 100%. Total daytime snow accumulation of around 9 inches.
- Tonight** Periods of snow, mainly before 1am. Low around 9. Wind chill values as low as 2. Northeast wind around 8 mph becoming northwest after midnight. Chance of precipitation is 80%. New snow accumulation of around 2 inches.
- Tuesday** Partly sunny and cold, with a high near 22. Wind chill values as low as zero. West wind 6 to 9 mph.
- Tuesday Night** A 30 percent chance of snow showers. Mostly cloudy, with a low around 3. Wind chill values as low as -7. West wind 7 to 9 mph.
- Wednesday** A 50 percent chance of snow showers. Mostly cloudy and cold, with a high near 12. West wind 10 to 20 mph. New snow accumulation of less than one inch possible.
- Wednesday Night** A 20 percent chance of snow showers before 1am. Mostly cloudy, with a low around -8.
- Thursday** Mostly sunny and cold, with a high near 7.
- Thursday Night** Partly cloudy, with a low around -8.
- Friday** Partly sunny and cold, with a high near 20.
- Friday Night** A 40 percent chance of snow. Cloudy, with a low around 17.
- Saturday** Rain and snow likely. Cloudy, with a high near 39. Chance of precipitation is 60%.
- Saturday Night** Rain and snow likely. Cloudy, with a low around 30. Chance of precipitation is 60%.
- Sunday** A chance of rain. Cloudy, with a high near 36. Chance of precipitation is 40%.

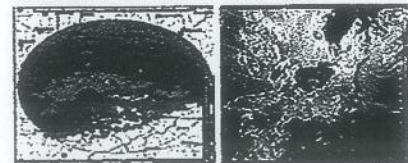
Topographic [Click Map For Forecast](#)



ABOUT THIS FORECAST

Point Forecast: Point Forecast: Lexington
 KY [Similar City Names](#)
 38.05°N 84.46°W (Elev. 1027 ft)
Last Update: 5:44 am EST Feb 16, 2015
Forecast Valid: 7am EST Feb 16, 2015-6pm EST Feb 22, 2015
[Forecast Discussion](#)

RADAR & SATELLITE IMAGES





NATIONAL WEATHER SERVICE

NATIONAL OCEANIC AND ATMOSPHERIC ADMINISTRATION

HAZARDOUS WEATHER CONDITIONS






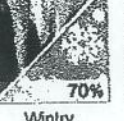
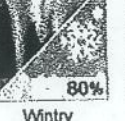


Winter Weather Advisory is in effect until February 18, 07:00 PM EST

Wind Chill Advisory in effect from February 18, 04:00 PM EST until February 19, 07:00 PM EST

Hazardous Weather Outlook is in effect

4 Miles SSW Lexington KY 7 Day Forecast

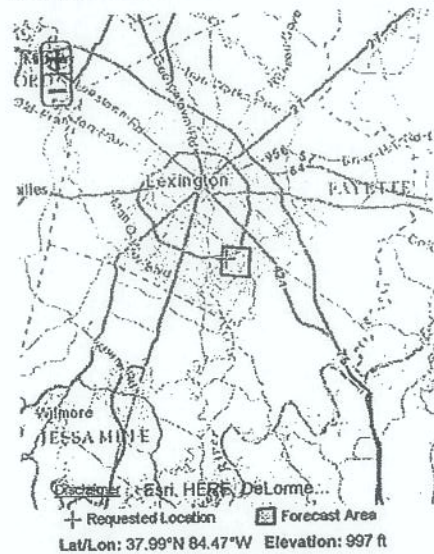
For More Weather Information:
[Louisville, KY Local Forecast Office](#)

TODAY	TONIGHT	THURSDAY	THURSDAY NIGHT	FRIDAY	FRIDAY NIGHT	SATURDAY	SATURDAY NIGHT	SUNDAY
 40%	 20%			 20%	 70%	 80%	 80%	 80%
Blowing Snow High: 20 °F	Slight Chc Snow Low: -12 °F	Chance Flurries High: 2 °F	Partly Cloudy Low: -15 °F	Slight Chc Snow High: 21 °F	Winty Mix Low: 18 °F	Winty Mix High: 40 °F	Rain/Snow Low: 32 °F	Rain/Snow High: 41 °F

Detailed Forecast

Today	A chance of snow showers before 10am, then a slight chance of snow showers between 10am and noon, then areas of blowing snow and scattered snow showers after noon. Mostly cloudy and cold, with a high near 20. Wind chill values as low as -1. West wind 10 to 16 mph, with gusts as high as 28 mph. Chance of precipitation is 40%.
Tonight	A 20 percent chance of snow showers before 9pm. Mostly cloudy, with a low around -12. Wind chill values as low as -24. West wind 8 to 13 mph.
Thursday	A chance of flurries after 1pm. Mostly sunny and cold, with a high near 2. Wind chill values as low as -29. West wind 8 to 11 mph.
Thursday Night	Partly cloudy, with a low around -15. Wind chill values as low as -26. West wind 5 to 7 mph becoming light and variable after midnight.
Friday	A 20 percent chance of snow after 1pm. Partly sunny and cold, with a high near 21. Southeast wind 5 to 8 mph.
Friday Night	Snow likely before 4am, then snow likely, possibly mixed with freezing rain. Cloudy, with a low around 18. Chance of precipitation is 70%. New precipitation amounts between a tenth and quarter of an inch possible.
Saturday	Snow, possibly mixed with freezing rain and sleet before 9am, then rain, possibly mixed with freezing rain and sleet between 9am and 10am, then rain after 10am. High near 40. Chance of precipitation is 80%.
Saturday Night	Rain and snow. Low around 32. Chance of precipitation is 80%.
Sunday	Rain and snow. High near 41. Chance of precipitation is 80%.
Sunday Night	A 30 percent chance of snow. Mostly cloudy, with a low around 14.
Monday	A 20 percent chance of snow. Partly sunny and cold, with a high near 25.
Monday Night	Partly cloudy, with a low around 11.
Tuesday	Mostly sunny, with a high near 32.

Topographic Click Map For Forecast

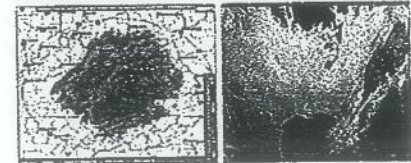


ABOUT THIS FORECAST

Point Forecast: Point Forecast: 4 Miles SSW Lexington KY
37.99°N 84.47°W (Elev. 997 ft)
Last Update: 6:53 am EST Feb 18, 2015
Forecast Valid: 9am EST Feb 18, 2015-6pm EST Feb 24, 2015
[Forecast Discussion](#)

[KML](#) [XML](#)

RADAR & SATELLITE IMAGES





HAZARDOUS WEATHER CONDITIONS

Wind Chill Advisory in effect from February 19, 10:00 AM EST until February 20, 07:00 AM EST

Hazardous Weather Outlook is in effect

4 Miles SSW Lexington KY

7 Day Forecast

THIS AFTERNOON	TONIGHT	FRIDAY	FRIDAY NIGHT	SATURDAY	SATURDAY NIGHT	SUNDAY	SUNDAY NIGHT	MONDAY
Cold	Partly Cloudy	Slight Chc Snow	Snow	Snow/Sleet	Rain	Chance Rain/Snow	Chance Snow	Mostly Cloudy
High: 5 °F	Low: -15 °F	High: 21 °F	Low: 20 °F	High: 42 °F	Low: 36 °F	High: 40 °F	Low: 17 °F	High: 26 °F

For More Weather Information:

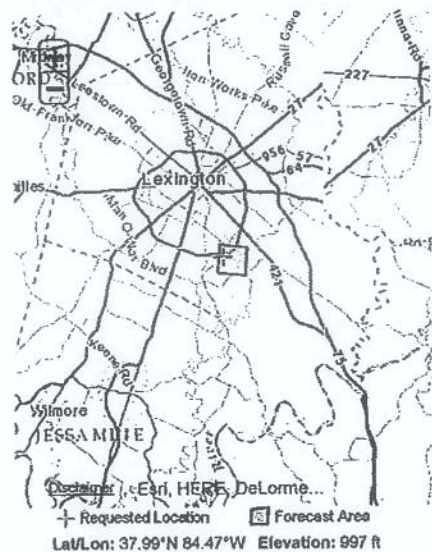
Louisville, KY Local Forecast Office

Detailed Forecast

- This Afternoon** Partly sunny and cold, with a high near 5. Wind chill values as low as -13. West wind around 11 mph.
- Tonight** Partly cloudy, with a low around -15. Wind chill values as low as -25. West wind around 6 mph becoming light and variable after midnight.
- Friday** A 20 percent chance of snow after 4pm. Increasing clouds and cold, with a high near 21. Wind chill values as low as -26. Southeast wind 5 to 8 mph.
- Friday Night** Snow, mainly after 1am. Low around 20. Wind chill values as low as 10. South wind 7 to 11 mph. Chance of precipitation is 80%. New snow accumulation of less than one inch possible.
- Saturday** Snow and sleet before 10am, then rain, possibly mixed with sleet between 10am and 2pm, then rain after 2pm. High near 42. South wind 11 to 14 mph. Chance of precipitation is 90%. New snow and sleet accumulation of less than one inch possible.
- Saturday Night** Rain. Low around 36. Chance of precipitation is 90%. New precipitation amounts between a half and three quarters of an inch possible.
- Sunday** A chance of rain before 9am, then a chance of rain and snow between 9am and 2pm, then a chance of snow after 2pm. Mostly cloudy, with a high near 40. Chance of precipitation is 50%.
- Sunday Night** A 30 percent chance of snow. Mostly cloudy, with a low around 17.
- Monday** Mostly cloudy, with a high near 26.
- Monday Night** Partly cloudy, with a low around 12.
- Tuesday** Mostly sunny, with a high near 31.
- Tuesday Night** Mostly cloudy, with a low around 19.
- Wednesday** Mostly sunny, with a high near 30.

Topographic

Click Map For Forecast

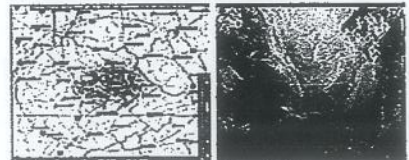


ABOUT THIS FORECAST

Point Forecast: Point Forecast: 4 Miles SSW Lexington KY
37.99°N 84.47°W (Elev. 997 ft)
Last Update: 9:51 am EST Feb 19, 2015
Forecast Valid: 1pm EST Feb 19, 2015-8pm EST Feb 25, 2015
[Forecast Discussion](#)

[HTML](#) [XML](#)

RADAR & SATELLITE IMAGES





NATIONAL WEATHER SERVICE

NATIONAL OCEANIC AND ATMOSPHERIC ADMINISTRATION

HAZARDOUS WEATHER CONDITIONS

Winter Storm Warning in effect from February 20, 07:00 PM EST until February 21, 07:00 PM EST
Hazardous Weather Outlook is in effect

4 Miles SSW Lexington KY 7 Day Forecast

For More Weather Information:
Louisville, KY Local Forecast Office

TODAY	TONIGHT	SATURDAY	SATURDAY NIGHT	SUNDAY	SUNDAY NIGHT	MONDAY	MONDAY NIGHT	TUESDAY
30%	90%	100%	80%	30%	20%			
Chance Snow High: 22 °F	Wintry Mix Low: 21 °F ↑	Wintry Mix High: 37 °F	Snow/Sleet Low: 29 °F	Chance Snow High: 33 °F	Slight Chc Snow Low: 4 °F	Cold High: 16 °F	Partly Cloudy Low: 0 °F	Mostly Sunny High: 29 °F

Detailed Forecast

Today	A 30 percent chance of snow, mainly after 5pm. Mostly cloudy and cold, with a high near 22. Wind chill values as low as -8. Southeast wind around 8 mph.
Tonight	Periods of snow before 2am, then sleet, possibly mixed with freezing rain. Temperature rising to around 30 by 5am. South wind 7 to 11 mph. Chance of precipitation is 90%. New ice accumulation of less than a 0.1 of an inch possible. New snow and sleet accumulation of around 3 inches.
Saturday	Freezing rain and sleet, possibly mixed with snow before 10am, then snow, possibly mixed with sleet between 10am and 11am, then rain, possibly mixed with sleet after 11am. High near 37. South wind 11 to 15 mph. Chance of precipitation is 100%. New ice accumulation of less than a 0.1 of an inch possible. New snow and sleet accumulation of around an inch possible.
Saturday Night	Rain and sleet before 3am, then a chance of snow and sleet between 3am and 4am, then a chance of snow after 4am. Low around 29. South wind 5 to 7 mph becoming northwest after midnight. Chance of precipitation is 80%. New snow and sleet accumulation of less than a half inch possible.
Sunday	A 30 percent chance of snow. Mostly cloudy, with a high near 33. Northwest wind 7 to 9 mph.
Sunday Night	A 20 percent chance of snow. Mostly cloudy, with a low around 4.
Monday	Partly sunny and cold, with a high near 16.
Monday Night	Partly cloudy, with a low around 0.
Tuesday	Mostly sunny, with a high near 29.
Tuesday Night	A 20 percent chance of snow showers. Mostly cloudy, with a low around 15.
Wednesday	Partly sunny, with a high near 29.
Wednesday Night	Mostly cloudy, with a low around 9.
Thursday	Mostly cloudy, with a high near 26.

Topographic

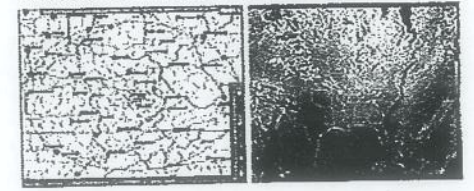
Lat/Lon: 37.99°N 84.47°W Elevation: 997 ft

ABOUT THIS FORECAST

Point Forecast: Point Forecast: 4 Miles SSW Lexington KY
 37.99°N 84.47°W (Elev. 997 ft)
 Last Update: 10:26 am EST Feb 20, 2015
 Forecast Valid: 11am EST Feb 20, 2015-6pm EST Feb 26, 2015
[Forecast Discussion](#)

[KML](#) [XML](#)

RADAR & SATELLITE IMAGES





HAZARDOUS WEATHER CONDITIONS

Hazardous Weather Outlook is in effect

4 Miles SSW Lexington KY
7 Day Forecast

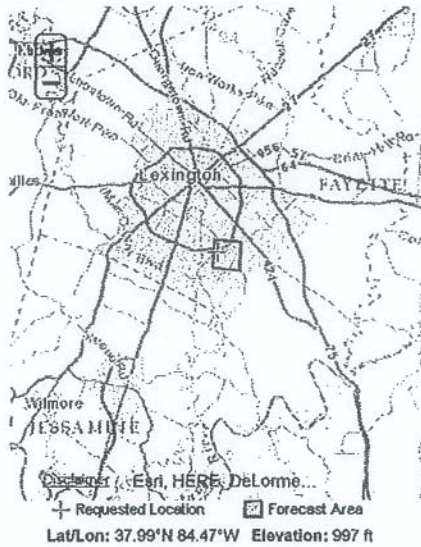
For More Weather Information:
Louisville, KY Local Forecast Office

TODAY	TONIGHT	TUESDAY	TUESDAY NIGHT	WEDNESDAY	WEDNESDAY NIGHT	THURSDAY	THURSDAY NIGHT	FRIDAY
Slight Chc Flurries High: 18 °F	Partly Cloudy Low: 2 °F	Mostly Sunny High: 29 °F	Chance Snow Low: 19 °F	Partly Sunny High: 32 °F	Mostly Cloudy Low: 9 °F	Chance Snow High: 23 °F	Mostly Cloudy Low: 2 °F	Cold High: 20 °F

Detailed Forecast

Today	A slight chance of flurries before 1pm. Partly sunny and cold, with a high near 18. Wind chill values as low as -3. North wind 8 to 11 mph.
Tonight	Partly cloudy, with a low around 2. Wind chill values as low as -6. Northeast wind around 6 mph becoming calm after midnight.
Tuesday	Mostly sunny, with a high near 29. Wind chill values as low as -8. South wind 5 to 13 mph becoming southwest in the afternoon.
Tuesday Night	A 30 percent chance of snow before 1am. Mostly cloudy, with a low around 19. Wind chill values as low as 8. West wind 8 to 10 mph.
Wednesday	Partly sunny, with a high near 32. West wind around 6 mph becoming northwest in the afternoon.
Wednesday Night	Mostly cloudy, with a low around 9.
Thursday	A 30 percent chance of snow. Mostly cloudy and cold, with a high near 23.
Thursday Night	Mostly cloudy, with a low around 2.
Friday	Mostly sunny and cold, with a high near 20.
Friday Night	Mostly cloudy, with a low around 6.
Saturday	Partly sunny, with a high near 31.
Saturday Night	A chance of rain and snow. Mostly cloudy, with a low around 26. Chance of precipitation is 30%.
Sunday	A chance of rain. Mostly cloudy, with a high near 48. Chance of precipitation is 40%.

Topographic Click Map For Forecast

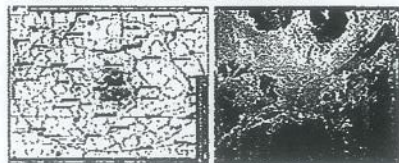


ABOUT THIS FORECAST

Point Forecast: Point Forecast: 4 Miles SSW Lexington KY
37.99°N 84.47°W (Elev. 997 ft)
Last Update: 6:40 am EST Feb 23, 2015
Forecast Valid: 9am EST Feb 23, 2015-6pm EST Mar 1, 2015
[Forecast Discussion](#)

[KML](#) [XML](#)

RADAR & SATELLITE IMAGES





- Owner
- Architect
- Contractor
- Field
- Other

CHANGE ORDER

Project: CAC & Coroner reroof
Community Action Center reroof
Georgetown Street
Lexington, KY

Change Order Number: 2
Initiation Date: 04/01/2015

To: Riddell Construction Inc.
4245 Richmond Rd
Irvine, KY 40336

File Number: 201418.doc

Contract For:

Contract Date: February 02, 2015

You are directed to make the following changes in the contract:

Time extension of three (3) days are added to the contract due to inclement weather, see attached documentation.

Not valid until signed by both the Owner and The Architect.

Signature of the Contractor indicates hid agreement herewith, including any adjustments in the Contract or contract Time.

The original (Contract Sum) (Guaranteed Maximum Cost) was.....	\$ 597,720.00
Net change by previous authorized Change Orders.....	\$ 0000.00
The original (Contract Sum) (Guaranteed Maximum Cost) prior to this Change Order was.....	\$597,720.00
The original (Contract Sum) (Guaranteed Maximum Cost) will by (increased) (decreased) (unchanged) by this change order.....	\$597,720.00
The New (Contract Sum) (Guaranteed Maximum Cost) including this Change Order will be.....	\$0.00
The Contract time will be (increased) (decrease) (unchanged) by three (3) days	
The Date of Substantial completion as of the date of this Change Order therefore is June 5, 2015	

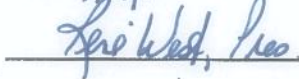
Authorized:

Architect:
Kesler Simpson Architects, LLC
3728 Willow Ridge Rd
Lexington, Kentucky 40514
Date: 4-1-15

Contractor:
Riddell Const. Inc
4245 Rich Rd.
Irvine, Ky. 40336
Date: 4/14/15

Owner:
Lexington-Fayette Urban Co. Govt.
200 East Main Street, 4th Floor
Lexington, Kentucky 40507
Date: 4/8/2015







RIDDELL CONSTRUCTION INC.
4245 RICHMOND ROAD
IRVINE, KY 40336
606-723-5800
606-723-7800 FAX

March 16, 2015

Kesler Simpson Architects
706 Westland Drive
Lexington, KY 40504

Project: Coroner Office and CAC Reroof
RE: Contract Extension For Adverse Weather Delays (March 3rd - March 16th)

Between March, 11th and March 13th we where unable to do any work on the project due to the large amount of snow we recived. We would please ask that the contract be extended by 3 fair weather working days lost during this period. We have also had adverse weather conditions from March 3rd - March 13th that has prevented any sustainable work be preformed on the roofing portions and all work items that are associated or dependent on the roof work. We would like to ask that the weather delays for the roofing protion of this project be noted and once the roofing starts any of the lost days be added to the contract period if necessary to complete the roof work or any work item affected by the roof work.

Respectfully,

Brandon Henson



NATIONAL WEATHER SERVICE

NATIONAL OCEANIC AND ATMOSPHERIC ADMINISTRATION

HAZARDOUS WEATHER CONDITIONS

Hazardous Weather Outlook is in effect
Hydrologic Outlook is in effect

Lexington KY

7 Day Forecast

TODAY	TONIGHT	TUESDAY	TUESDAY NIGHT	WEDNESDAY	WEDNESDAY NIGHT
3/2 Mostly Sunny High: 37 °F	20% Slight Chc Freezing Rain Low: 28 °F	100% Freezing Rain High: 56 °F	100% Showers Low: 40 °F	100% Rain/Snow High: 40 °F	80% Snow Low: 16 °F

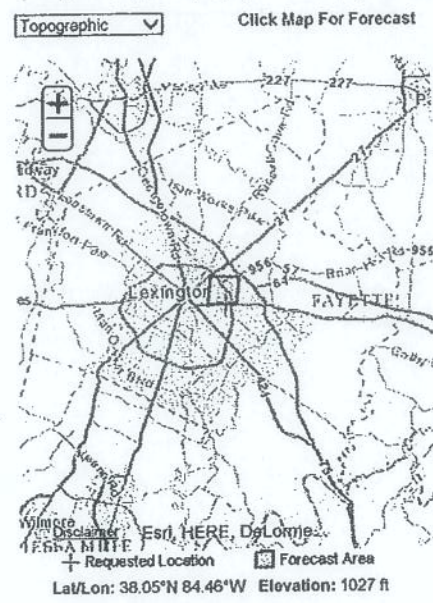
For More Weather Information:

Louisville, KY Local Forecast Office

THURSDAY	THURSDAY NIGHT	FRIDAY
70% Snow Likely High: 20 °F	20% Slight Chc Snow Low: 3 °F	3/4 Sunny High: 31 °F

Detailed Forecast

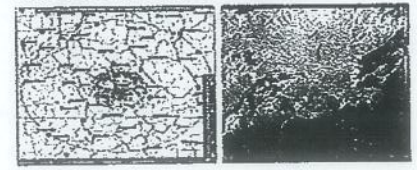
Today	Mostly sunny, with a high near 37. Northeast wind around 7 mph.
Tonight	A slight chance of rain or freezing rain after 4am. Mostly cloudy, with a low around 28. Northeast wind 6 to 8 mph. Chance of precipitation is 20%.
Tuesday	A chance of rain or freezing rain before 9am, then rain. Some thunder is also possible. High near 56. Southeast wind 7 to 12 mph becoming south 13 to 18 mph in the afternoon. Chance of precipitation is 100%. Little or no ice accumulation expected.
Tuesday Night	Showers and possibly a thunderstorm. Low around 40. Southwest wind 13 to 18 mph. Chance of precipitation is 100%. New rainfall amounts between 1 and 2 inches possible.
Wednesday	Rain before noon, then rain and snow between noon and 4pm, then snow after 4pm. Some thunder is also possible. High near 40. Northwest wind 8 to 10 mph, with gusts as high as 20 mph. Chance of precipitation is 100%. New snow accumulation of around an inch possible.
Wednesday Night	Snow. Low around 16. Chance of precipitation is 80%.
Thursday	Snow likely, mainly before 8am. Partly sunny and cold, with a high near 20. Chance of precipitation is 70%.
Thursday Night	A 20 percent chance of snow. Mostly clear, with a low around 3.
Friday	Sunny, with a high near 31.
Friday Night	Mostly clear, with a low around 17.
Saturday	Sunny, with a high near 44.
Saturday Night	Partly cloudy, with a low around 26.
Sunday	Mostly sunny, with a high near 46.



ABOUT THIS FORECAST

Point Forecast: Point Forecast: Lexington
 KY **Similar City Names:** 38.05°N 84.46°W (Elev. 1027 ft)
Last Update: 8:41 am EST Mar 2, 2015
Forecast Valid: 10am EST Mar 2, 2015-8pm EDT Mar 8, 2015
[Forecast Discussion](#)

RADAR & SATELLITE IMAGES





NATIONAL WEATHER SERVICE

NATIONAL OCEANIC AND ATMOSPHERIC ADMINISTRATION

HAZARDOUS WEATHER CONDITIONS

- Flood Watch is in effect until March 4, 07:00 PM EST
- Winter Storm Warning in effect from March 4, 11:00 AM EST until March 5, 01:00 PM EST
- Flood Warning in effect from March 4, 10:09 AM EST until March 4, 04:00 PM EST
- Hazardous Weather Outlook is in effect

4 Miles SSW Lexington KY

7 Day Forecast

THIS AFTERNOON	TONIGHT	THURSDAY	THURSDAY NIGHT	FRIDAY	FRIDAY NIGHT
100%	100%	70%			
Rain	Snow/Sleet	Snow Likely	Partly Cloudy	Cold	Mostly Clear
High: 34 °F	Low: 16 °F	High: 22 °F	Low: -1 °F	High: 25 °F	Low: 11 °F

For More Weather Information:

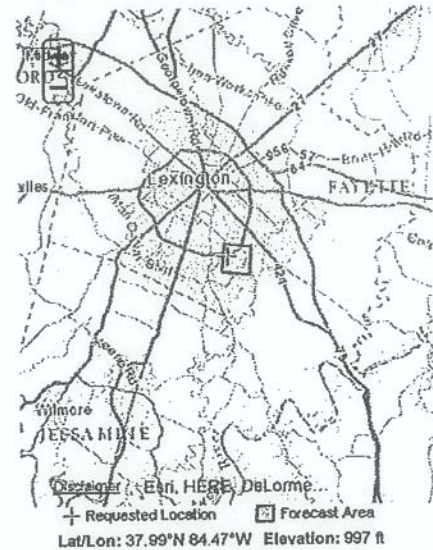
Louisville, KY Local Forecast Office

SATURDAY	SATURDAY NIGHT	SUNDAY
31	31	31
Mostly Sunny	Partly Cloudy	Mostly Sunny
High: 36 °F	Low: 23 °F	High: 43 °F

Detailed Forecast

This Afternoon	Rain. Steady temperature around 34. North wind around 9 mph. Chance of precipitation is 100%. New precipitation amounts between a tenth and quarter of an inch possible.
Tonight	Rain, possibly mixed with sleet before 7pm, then snow. The snow could be heavy at times. Low around 16. Wind chill values as low as 8. North wind 9 to 11 mph. Chance of precipitation is 100%. New snow and sleet accumulation of around 9 inches.
Thursday	Snow likely, mainly before 1pm. Mostly cloudy and cold, with a high near 22. Wind chill values as low as 2. North wind around 10 mph. Chance of precipitation is 70%. New snow accumulation of around 2 inches.
Thursday Night	Partly cloudy, with a low around -1. Wind chill values as low as -11. North wind around 7 mph becoming northeast after midnight.
Friday	Sunny and cold, with a high near 25. East wind around 6 mph becoming light and variable in the afternoon.
Friday Night	Mostly clear, with a low around 11.
Saturday	Mostly sunny, with a high near 36.
Saturday Night	Partly cloudy, with a low around 23.
Sunday	Mostly sunny, with a high near 43.
Sunday Night	Partly cloudy, with a low around 28.
Monday	Mostly sunny, with a high near 48.
Monday Night	Partly cloudy, with a low around 31.
Tuesday	Mostly sunny, with a high near 55.

Topographic Click Map For Forecast



ABOUT THIS FORECAST

Point Forecast: Point Forecast: 4 Miles SSW Lexington KY
37.99°N 84.47°W (Elev. 997 ft)

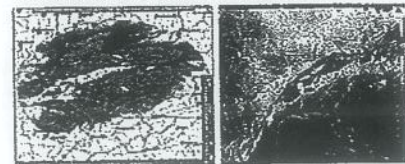
Last Update: 2:25 pm EST Mar 4, 2015

Forecast Valid: 4pm EST Mar 4, 2015-6pm EDT Mar 10, 2015

[Forecast Discussion](#)

[KML](#) [XML](#)

RADAR & SATELLITE IMAGES





NATIONAL WEATHER SERVICE

NATIONAL OCEANIC AND ATMOSPHERIC ADMINISTRATION

HAZARDOUS WEATHER CONDITIONS

Winter Storm Warning is in effect until March 5, 01:00 PM EST
 Hazardous Weather Outlook is in effect

4 Miles SSW Lexington KY

7 Day Forecast

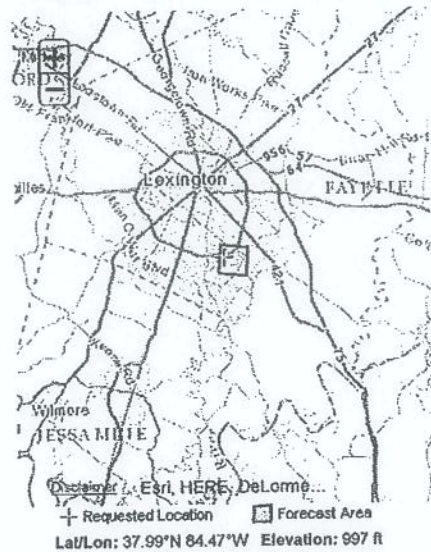
For More Weather Information:
 Louisville, KY Local Forecast Office

TODAY	TONIGHT	FRIDAY	FRIDAY NIGHT	SATURDAY	SATURDAY NIGHT	SUNDAY	SUNDAY NIGHT	MONDAY
60%								
Snow Likely High: 19 °F	Partly Cloudy Low: -2 °F	Cold High: 25 °F	Areas Fog Low: 9 °F	Mostly Sunny High: 35 °F	Partly Cloudy Low: 25 °F	Partly Sunny High: 45 °F	Mostly Cloudy Low: 28 °F	Mostly Sunny High: 48 °F

Detailed Forecast

Today	Snow likely, mainly before 3pm. Mostly cloudy and cold, with a high near 19. Wind chill values as low as 4. North wind around 10 mph. Chance of precipitation is 60%. Total daytime snow accumulation of around 2 inches.
Tonight	Partly cloudy, with a low around -2. Wind chill values as low as -12. Northeast wind around 7 mph.
Friday	Sunny and cold, with a high near 25. Wind chill values as low as -12. Light and variable wind becoming southwest around 6 mph in the afternoon.
Friday Night	Areas of fog after 2am. Otherwise, mostly clear, with a low around 9. Wind chill values as low as 1. Southwest wind around 7 mph.
Saturday	Mostly sunny, with a high near 35. Southwest wind around 8 mph.
Saturday Night	Partly cloudy, with a low around 25.
Sunday	Partly sunny, with a high near 45.
Sunday Night	Mostly cloudy, with a low around 28.
Monday	Mostly sunny, with a high near 48.
Monday Night	Partly cloudy, with a low around 29.
Tuesday	Mostly sunny, with a high near 54.
Tuesday Night	A 10 percent chance of showers. Partly cloudy, with a low around 35.
Wednesday	A 20 percent chance of showers. Mostly sunny, with a high near 56.

Topographic Click Map For Forecast

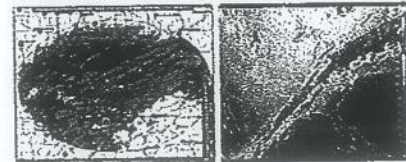


ABOUT THIS FORECAST

Point Forecast: Point Forecast: 4 Miles SSW Lexington KY
 37.99°N 84.47°W (Elev. 997 ft)
 Last Update: 8:52 am EST Mar 5, 2015
 Forecast Valid: 10am EST Mar 5, 2015-6pm EDT Mar 11, 2015
[Forecast Discussion](#)

KML XML

RADAR & SATELLITE IMAGES





NATIONAL WEATHER SERVICE

NATIONAL OCEANIC AND ATMOSPHERIC ADMINISTRATION

HAZARDOUS WEATHER CONDITIONS

Special Weather Statement is in effect
Hazardous Weather Outlook is in effect

4 Miles SSW Lexington KY

7 Day Forecast

For More Weather Information:

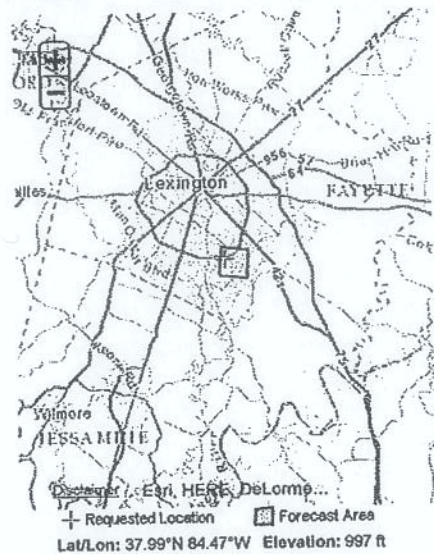
Louisville, KY Local Forecast Office

TODAY	TONIGHT	SATURDAY	SATURDAY NIGHT	SUNDAY	SUNDAY NIGHT	MONDAY	MONDAY NIGHT	TUESDAY
3/6		3/9		3/8		3/9		3/10
Mostly Sunny High: 27 °F	Dense Fog Low: 10 °F	Mostly Sunny High: 40 °F	Partly Cloudy Low: 26 °F	Partly Sunny High: 43 °F	Mostly Cloudy Low: 28 °F	Partly Sunny High: 48 °F	Slight Chc Rain Low: 33 °F	Partly Sunny High: 53 °F

Detailed Forecast

Today	Mostly sunny, with a high near 27. Wind chill values as low as 7. Calm wind becoming southwest around 6 mph in the afternoon.
Tonight	Patchy dense fog after 1am. Otherwise, mostly clear, with a low around 10. Southwest wind 5 to 7 mph.
Saturday	Mostly sunny, with a high near 40. Wind chill values as low as 2. Southwest wind 9 to 14 mph.
Saturday Night	Partly cloudy, with a low around 25. Southwest wind 7 to 10 mph.
Sunday	Partly sunny, with a high near 43. Southwest wind around 7 mph.
Sunday Night	Mostly cloudy, with a low around 28.
Monday	Partly sunny, with a high near 48.
Monday Night	A 20 percent chance of rain. Mostly cloudy, with a low around 33.
Tuesday	Partly sunny, with a high near 53.
Tuesday Night	Partly cloudy, with a low around 34.
Wednesday	Mostly sunny, with a high near 56.
Wednesday Night	Partly cloudy, with a low around 35.
Thursday	Mostly sunny, with a high near 57.

Topographic Click Map For Forecast



ABOUT THIS FORECAST

Point Forecast: Point Forecast: 4 Miles SSW Lexington KY
 37.99°N 84.47°W (Elev. 997 ft)

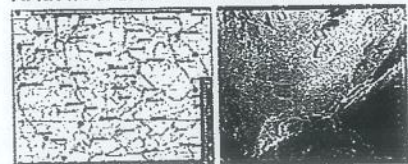
Last Update: 8:26 am EST Mar 6, 2015

Forecast Valid: 9am EST Mar 6, 2015-6pm EDT Mar 12, 2015

[Forecast Discussion](#)

[KML](#) [XML](#)

RADAR & SATELLITE IMAGES





NATIONAL WEATHER SERVICE

NATIONAL OCEANIC AND ATMOSPHERIC ADMINISTRATION

HAZARDOUS WEATHER CONDITIONS

Dense Fog Advisory is in effect until March 11, 10:00 AM EDT

Hazardous Weather Outlook is in effect

Lexington KY 7 Day Forecast

TODAY	TONIGHT	THURSDAY	THURSDAY NIGHT	FRIDAY	FRIDAY NIGHT
Dense Fog High: 60 °F	Partly Cloudy Low: 40 °F	Mostly Sunny High: 59 °F	80% Showers Low: 49 °F	80% Showers High: 61 °F	80% Showers Low: 54 °F

For More Weather Information: Louisville, KY Local Forecast Office

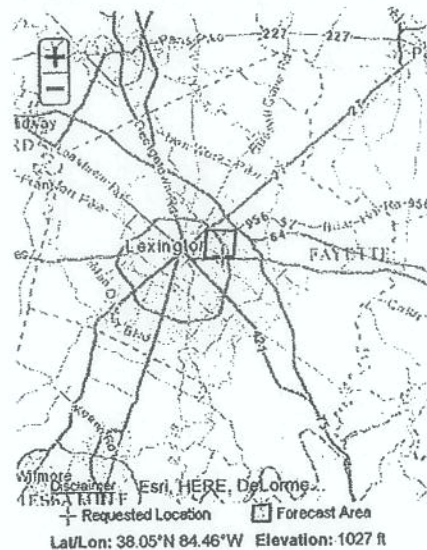
SATURDAY	SATURDAY NIGHT	SUNDAY
60% Showers Likely High: 61 °F	20% Slight Chc Showers Low: 38 °F	Mostly Sunny High: 53 °F

Detailed Forecast

Today	Areas of dense fog before 11am. Otherwise, mostly cloudy, with a high near 60. North wind around 5 mph.
Tonight	Partly cloudy, with a low around 40. Northeast wind around 7 mph.
Thursday	Mostly sunny, with a high near 59. East wind 9 to 11 mph.
Thursday Night	Showers. Low around 49. Southeast wind around 9 mph. Chance of precipitation is 80%. New precipitation amounts between a quarter and half of an inch possible.
Friday	Showers. High near 61. Southeast wind 9 to 11 mph. Chance of precipitation is 80%. New precipitation amounts between a half and three quarters of an inch possible.
Friday Night	Showers. Low around 54. Chance of precipitation is 80%. New precipitation amounts between a quarter and half of an inch possible.
Saturday	Showers likely. Cloudy, with a high near 61. Chance of precipitation is 60%.
Saturday Night	A 20 percent chance of showers. Mostly cloudy, with a low around 38.
Sunday	Mostly sunny, with a high near 53.
Sunday Night	Partly cloudy, with a low around 36.
Monday	Mostly sunny, with a high near 61.
Monday Night	Partly cloudy, with a low around 41.
Tuesday	Mostly sunny, with a high near 54.

Topographic

Click Map For Forecast

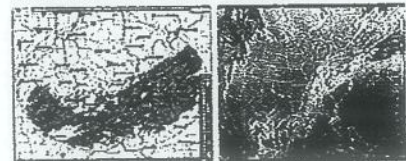


ABOUT THIS FORECAST

Point Forecast: Point Forecast: Lexington
KY Similar City Names: 38.05°N 84.46°W (Elev. 1027 ft)
Last Update: 6:57 am EDT Mar 11, 2015
Forecast Valid: 8am EDT Mar 11, 2015-6pm EDT Mar 17, 2015
[Forecast Discussion](#)

[KML](#) [XML](#)

RADAR & SATELLITE IMAGES





NATIONAL WEATHER SERVICE

NATIONAL OCEANIC AND ATMOSPHERIC ADMINISTRATION



(<http://www.noaa.gov>) (<http://www.weather.gov>)

(<http://www.commerce.g>)

GET LOCAL FORECAST

[Location Help](#)

NEWS

Heavy Rain and Flash Flooding Possible Thursday Lower Mississippi Valley

Moisture from the Gulf of Mexico will bring heavy rain, thunderstorms and a threat of flash flooding to the Lower Mississippi Valley Thursday. A broad area of rain will move into the Ohio and Tennessee Valleys as well. In the west, beneficial rain will move into the Pacific Northwest with snow for the Rocky Mountains.

[Read More...](http://www.hpc.ncep.noaa.gov/) (<http://www.hpc.ncep.noaa.gov/>)

HAZARDOUS WEATHER CONDITIONS

- Flood Watch in effect from March 13, 02:00 AM EDT until March 14, 08:00 AM EDT
([showsigwx.php?warnzone=KYZ057&warncounty=KYC151&firewxzone=KYZ057&local_place1=Richmond KY&product1=Flood+Watch&lat=37.7428&lon=-84.2936](#))
- Dense Fog Advisory in effect from March 12, 04:56 AM EDT until March 12, 09:00 AM EDT
([showsigwx.php?warnzone=KYZ057&warncounty=KYC151&firewxzone=KYZ057&local_place1=Richmond KY&product1=Dense+Fog+Advisory&lat=37.7428&lon=-84.2936](#))
- Hazardous Weather Outlook is in effect ([showsigwx.php?warnzone=KYZ057&warncounty=KYC151&firewxzone=KYZ057&local_place1=Richmond KY&product1=Hazardous+Weather+Outlook&lat=37.7428&lon=-84.2936](#))

CURRENT CONDITIONS

En Español

(<http://forecast.weather.gov/MapClick.php?CityName=Richmond&state=KY&site=LW>)

Share (<http://www.addthis.com/bookmark.php?v=250&pubid=ra-5127a6364d551d04>) |

([http://www.addthis.com/bookmark.php?v=300&winname=addthis&pub=xa-4b05b2d91f18c9cc&source=tbx-300&lng=en-US&s=gmail&url=http%3A%2F%2Fforecast.weather.gov%2FMapClick.php%3FCityName%3DRichmond%26state%3DKY%26site%3DLMK%26textField1%3D37.7428%26textField2%3D-84.2936%26e%3D0&title=7-Day%20Forecast%20for%20Latitude%2037.75%C2%B0N%20and%20Longitude%2084.29%C2%B0W%20\(Elev.%20922%20ft\)&ate=AT-xa-05b2d91f18c9cc/-/55018007cf2b1c38/2/546d78242e2a84f4&frommenu=1&uid=546d78242e2a84f4&ct=1&pre=http%3A%2F%2Fwww.noaa.gov%2F&tt=0&captcha_provider=nucaptcha](http://www.addthis.com/bookmark.php?v=300&winname=addthis&pub=xa-4b05b2d91f18c9cc&source=tbx-300&lng=en-US&s=gmail&url=http%3A%2F%2Fforecast.weather.gov%2FMapClick.php%3FCityName%3DRichmond%26state%3DKY%26site%3DLMK%26textField1%3D37.7428%26textField2%3D-84.2936%26e%3D0&title=7-Day%20Forecast%20for%20Latitude%2037.75%C2%B0N%20and%20Longitude%2084.29%C2%B0W%20(Elev.%20922%20ft)&ate=AT-xa-05b2d91f18c9cc/-/55018007cf2b1c38/2/546d78242e2a84f4&frommenu=1&uid=546d78242e2a84f4&ct=1&pre=http%3A%2F%2Fwww.noaa.gov%2F&tt=0&captcha_provider=nucaptcha))

Fair

Humidity 100%
Wind Speed E 5 mph
Barometer 30.40 in







Current conditions at
Lexington, Blue Grass Airport (KLEX)
 Lat: 38.04°N Lon: 84.61°W Elev: 978ft.

More Local Wx (obslocal.php?
 warnzone=KYZ041&local_place=4 Miles SSW
 Lexington KY&zoneid=EDT&offset=14400) | 3 Day
 History
 (http://www.weather.gov/data/obhistory/KLEX.html)
 | Mobile Weather
 (http://mobile.weather.gov/index.php?
 lat=38.04&lon=-84.61)

4 MILES SSW LEXINGTON KY

For More Weather Information:
 Louisville, KY Local Forecast Office
 (http://www.crh.noaa.gov/lmk/)

7 Day Forecast

Today	Tonight	Friday	Friday Night	Saturday	Saturday Night
					
Patchy Fog	Chance Showers	Showers	Showers	Showers	Showers
High: 61 °F	Low: 48 °F	High: 55 °F	Low: 55 °F	High: 60 °F	Low: 38

DETAILED FORECAST

Today	Patchy fog before 10am. Otherwise, mostly sunny, with a high near 61. East wind 7 to 13 mph.
Tonight	A 30 percent chance of showers, mainly after 5am. Increasing clouds, with a low around 48. East wind around 9 mph.
Friday	Showers, mainly after 7am. High near 55. Southeast wind 7 to 10 mph. Chance of precipitation is 100%. New precipitation amounts between a half and three quarters of an inch possible.
Friday Night	Showers. Low around 55. South wind around 9 mph. Chance of precipitation is 100%. New precipitation amounts between a half and three quarters of an inch possible.
Saturday	Showers. High near 60. Southwest wind 7 to 9 mph. Chance of precipitation is 90%. New precipitation amounts between a quarter and half of an inch possible.
Saturday Night	Periods of showers before 9pm. Low around 38. Chance of precipitation is 80%. New precipitation amounts of less than a tenth of an inch possible.
Sunday	Sunny, with a high near 54.
Sunday Night	Mostly clear, with a low around 36.

Monday	Sunny, with a high near 61.
Monday Night	A 20 percent chance of showers. Partly cloudy, with a low around 41.
Tuesday	A 20 percent chance of showers. Partly sunny, with a high near 54.
Tuesday Night	A 20 percent chance of showers. Partly cloudy, with a low around 31.
Wednesday	Sunny, with a high near 51.

ADDITIONAL FORECASTS AND INFORMATION

ZONE AREA FORECAST FOR FAYETTE COUNTY, KY (MAPCLICK.PHP?ZONEID=KYZ041)

Forecast Discussion (http://forecast.weather.gov/product.php?site=LMK&issuedby=LMK&product=AFD&format=CI&version=1&glossary=1)	Hourly Weather Graph (MapClick.php? lat=37.9887&lon=-84.4777&unit=0&lg=english&FcstType=gr
Printable Forecast (MapClick.php? lat=37.9887&lon=-84.4777&unit=0&lg=english&FcstType=di	Quick Text Forecast (MapClick.php? lat=37.9887&lon=-84.4777&unit=0&lg=english&FcstType=di
Text Only Forecast (MapClick.php? lat=37.9887&lon=-84.4777&unit=0&lg=english&FcstType=text&TextType=1)	Air Quality Forecasts (http://weather.gov/eq/probe_aq_data.php?latitude='.\$lat_search.'&longitude='.\$lon_search.')
	International System of Units (MapClick.php? lat=37.9887&lon=-84.4777&FcstType=text&unit=1&lg=en)
	About Point Forecasts (http://www.srh.weather.gov/srh/jetstream/webweather/pinpo)
Local Climatology (http://www.weather.gov/climate/index.php?wfo=lmk)	River Info / AHPS (http://water.weather.gov/ahps2/index.php?wfo=lmk)
Digital Forecast (http://www.crh.noaa.gov/product.php?site=lmk&product=AFM&issuedby=LMK&glossary=1)	Science / Technology (http://www.crh.noaa.gov/lmk/?n=scienceandtechnology)
Graphical Forecasts Home (http://www.nws.noaa.gov/forecasts/graphical/sectors/kentucky.php)	Preparedness (http://www.crh.noaa.gov/lmk/?n=preparedness)
Hazardous Weather Outlook (http://www.crh.noaa.gov/product.php?site=lmk&product=HWO&issuedby=LMK&glossary=1)	Severe Weather Data (http://www.crh.noaa.gov/lmk/?n=severe_wx_data)
	WFO Louisville Home (http://www.crh.noaa.gov/lmk/)
	Long Term Forecasts (http://www.crh.noaa.gov/lmk/?n=one_stop_climate)


ABOUT THIS FORECAST

Point Forecast:	4 Miles SSW Lexington KY 37.99°N 84.47°W (Elev. 997 ft)
Last Update (http://www.weather.gov/glossary/index.php?word=Last+update):	6:18 am EDT Mar 12, 2015

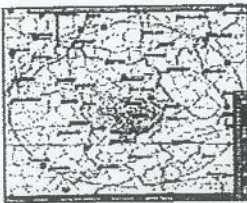
Forecast Valid
 (<http://www.weather.gov/glossary/index.php?word=forecast+valid+for>):

8am EDT Mar 12, 2015-6pm EDT Mar 18, 2015

Forecast Discussion (<http://forecast.weather.gov/product.php?site=LMK&issuedby=LMK&product=AFD&format=CI&version=1&gloss>.

KML ([MapClick.php?](#)
[lat=37.9887&lon=-84.4777&unit=0&lg=english&FcstType=kml](http://www.weather.gov/MapClick.php?lat=37.9887&lon=-84.4777&unit=0&lg=english&FcstType=kml)) 
 ([MapClick.php?](#)
[lat=37.9887&lon=-84.4777&unit=0&lg=english&FcstType=dwml](http://www.weather.gov/MapClick.php?lat=37.9887&lon=-84.4777&unit=0&lg=english&FcstType=dwml))

RADAR & SATELLITE IMAGES



(<http://radar.weather.gov/radar.php?rid=jkI&product=N0R&overlay=11101111&loop=no>)



(<http://www.goes.noaa.gov/ECIR4.html>)

- | | | |
|---|--|--|
| <p>PAST WEATHER (http://www.nws)</p> <p>Past Weather (http://www.nws.noaa)
 Climate Monitoring (http://www.cpc.ncep.noaa.gov/prod)
 Heating/Cooling Days (http://www.n)
 Monthly Temps (http://www.nws.noa)
 Records (http://www.nws.noaa.gov/k)
 Astronomical Data (http://aa.usno.na)
 Certified Weather Data (http://www.ncdc.noaa.gov/oa/mpp/)</p> | <p>ACTIVE ALERTS (http://alerts.wea)</p> <p>Warnings By State (http://alerts.wea)
 Excessive Rainfall and Winter Weath (http://www.hpc.ncep.noaa.gov/ww)
 River Flooding (http://water.weather.g)
 current_color=flood&current_type=al
 Latest Warnings (http://www.weathe)
 Thunderstorm/Tornado Outlook (http://www.nhc.noaa.gov)
 Hurricanes (http://www.nhc.noaa.gov)
 Fire Weather Outlooks (http://www.s)
 UV Alerts (http://www.cpc.ncep.noaa.gov/prod)
 Drought (http://www.drought.gov/)
 Space Weather (http://www.swpc.nc)
 NOAA Weather Radio (http://www.n)
 NWS CAP Feeds (http://alerts.weatf)</p> | <p>CURRENT CONDITIONS (http://www.w)</p> <p>Radar (http://www.weather.gov/Radar)
 Climate Monitoring (http://www.cpc.ncep.noaa.gov/products/)
 River Levels (http://water.weather.gov/al)
 Observed Precipitation (http://water.wea)
 Surface Weather (http://www.nws.noaa.gov/om/osd/portal)
 Upper Air (http://weather.noaa.gov/fax/b)
 Marine and Buoy Reports (http://www.nc)
 Snow Cover (http://www.noahrs.noaa.gov/interactive/)
 Satellite (http://www.goes.noaa.gov)
 Space Weather (http://www.swpc.noaa.g)</p> |
|---|--|--|

FORECAST (http://weather.gov/for)	WEATHER SAFETY (http://weather)	EDUCATION (http://weather.gov/educ)
<p>Local Forecast (http://www.weather) Severe Weather (http://www.spc.noa) Current Outlook Maps (http://www.h) Drought (http://www.cpc.ncep.noaa.g) Fire Weather (http://www.weather.go) Fronts/Precipitation Maps (http://ww) Current Graphical Forecast Maps (http://www.nws.noaa.gov/forecasts/) Rivers (http://water.weather.gov/ahp/) Marine (http://www.nws.noaa.gov/or) Offshore and High Seas (http://www.opc.ncep.noaa.gov/marir) Hurricanes (http://www.nhc.noaa.go) Aviation Weather (http://aviationwea) Climatic Outlook (http://www.cpc.ncep.noaa.gov/prod)</p>	<p>NOAA Weather Radio (http://www.w) StormReady (http://www.weather.go) Heat (http://www.nws.noaa.gov/om/h) Lightning (http://www.lightningsafety) Hurricanes (http://www.nhc.noaa.go) Thunderstorms (http://www.weather.gov/om/severe) Tornadoes (http://www.weather.gov/om/severe) Severe Weather (http://www.weather.gov/om/severe) Rip Currents (http://www.ripcurrents) Safe Boating (http://www.nws.noaa.gov/os/marine) Floods (http://www.weather.gov/om/severe) Winter Weather (http://www.weather.gov/om/winter/i) Ultra Violet Radiation (http://www.we) Air Quality (http://www.weather.gov/) Damage/Fatality/Injury Statistics (http://www.weather.gov/om/hazstat) Red Cross (http://www.redcross.org) Federal Emergency Management Ag (http://www.fema.gov/) Brochures (http://www.weather.gov/om/brochur)</p>	<p>NOAA Economics (http://www.economic) NOAA Education Resources (http://www.education.noaa.gov/Weathe) Glossary (http://www.weather.gov/gloss) JetStream (http://www.srh.noaa.gov/srh/) NWS Training Portal (http://www.weathe) NOAA Library (http://www.lib.noaa.gov/) Play Time for Kids (http://www.weather.gov/om/reachout/ki) For Students (http://www.education.noaa.gov/Weathe) For Teachers (http://www.nws.noaa.gov) Brochures (http://www.weather.gov/om/) Other Links (http://www.weather.gov/om/reachout/lin)</p>
INFORMATION CENTER (http://www.weather.gov/informati)	NEWS (http://weather.gov/news)	ABOUT (http://weather.gov/about)
<p>Space Weather (http://www.spacew) Daily Briefing (http://www.weather.gc) Marine (http://www.nws.noaa.gov/om/marin) Climate (http://www.nws.noaa.gov/cli) Fire Weather (http://www.weather.go) Aviation (http://www.aviationweathe) Forecast Models (http://mag.ncep.no) Water (http://water.weather.gov/ahps) GIS (http://www.nws.noaa.gov/gis) Cooperative Observers (http://www.nws.noaa.gov/om/coop/) Storm Spotters (http://www.nws.noaa.gov/skywarn/) Tsunami (http://www.tsunami.gov) Facts and Figures (http://www.economics.noaa.gov)</p>	<p>Newsroom (http://weather.gov/news) Social Media (http://weather.gov/soc) Events (http://www.nws.noaa.gov/com/weat) Pubs/Brochures/Booklets (http://www.weather.gov/om/brochur)</p>	<p>Organization (http://weather.gov/organization) Strategic Plan (http://www.weather.gov/sp/) For NWS Employees (https://sites.google.com/a/noaa.gov/nws) best-practices/ International (http://www.weather.gov/ia/home.htm) National Centers (http://weather.gov/organization) Products and Services (http://www.weather.gov/tg/) Glossary (http://www.weather.gov/glossary/) Contact Us (http://weather.gov/contact)</p>



US Dept of Commerce (<http://www.commerce.gov>)
 National Oceanic and Atmospheric Administration
 (<http://www.noaa.gov>)
 National Weather Service (<http://www.weather.gov>)
 Louisville, KY (<http://www.weather.gov/lmk>)

Disclaimer (<http://www.weather.gov/disclaimer>)
 Privacy Policy (<http://www.weather.gov/privacy>)
 Information (<http://www.weather.gov/information>)
 Quality (<http://www.cio.noaa.gov/7504>)
 Help (<http://www.rdc.noaa.gov/~foia>)
 Glossary (<http://www.weather.gov/about>)
 Opportunities (<http://www.weather.gov/career>)



NATIONAL WEATHER SERVICE

NATIONAL OCEANIC AND ATMOSPHERIC ADMINISTRATION



(<http://www.weather.gov>)

(<http://www.commerce.gov>)

GET LOCAL FORECAST

[Location Help](#)

NEWS

Heavy Rain, Flash Flooding Possible

Moisture streaming north from the Gulf of Mexico will cause heavy rain, thunderstorms and possible flash flooding across the lower Mississippi, Tennessee and Ohio Valleys Friday and Friday night. Heavy rain will move into the mid-Atlantic and parts of the northeast Friday night and Saturday. Some freezing rain is possible in the Great Lake States and portions of the northeast Friday.

[Read More...](http://www.hpc.ncep.noaa.gov/)

HAZARDOUS WEATHER CONDITIONS

- Flood Watch is in effect until March 14, 02:00 PM EDT ([showsigwx.php?warnzone=KYZ041&warncounty=KYC067&firewxzone=KYZ041&local_place1=4 Miles SSW Lexington KY&product1=Flood+Watch&lat=37.9887&lon=-84.4777](#))
- Hazardous Weather Outlook is in effect ([showsigwx.php?warnzone=KYZ041&warncounty=KYC067&firewxzone=KYZ041&local_place1=4 Miles SSW Lexington KY&product1=Hazardous+Weather+Outlook&lat=37.9887&lon=-84.4777](#))

CURRENT CONDITIONS

[En Español](#)

(<http://forecast.weather.gov/MapClick.php?lat=37.98868950600047&lon=-84.477717>)

Share (<http://www.addthis.com/bookmark.php?v=250&pubid=ra-5127a6364d551d04>) |
 ([http://www.addthis.com/bookmark.php?v=300&winname=addthis&pub=xa-4b05b2d91f18c9cc&source=tbx-300&lng=en-US&s=gmail&url=http%3A%2F%2Fforecast.weather.gov%2FMapClick.php%3Flat%3D37.98868950600047%26lon%3D-84.47771799899965%26site%3Dall%26smap%3D1&title=7-Day%20Forecast%20for%20Latitude%2037.99%C2%B0N%20and%20Longitude%2084.47%C2%B0W%20\(Elev.%20997%20ft\)&ate=AT-xa-05b2d91f18c9cc/-/5502d1e2936aa998/2/546d78242e2a84f4&frommenu=1&uid=546d78242e2a84f4&ct=1&pre=http%3A%2F%2Fwww.weather.gov%2F&tt=0&captcha_provider=nucaptcha](http://www.addthis.com/bookmark.php?v=300&winname=addthis&pub=xa-4b05b2d91f18c9cc&source=tbx-300&lng=en-US&s=gmail&url=http%3A%2F%2Fforecast.weather.gov%2FMapClick.php%3Flat%3D37.98868950600047%26lon%3D-84.47771799899965%26site%3Dall%26smap%3D1&title=7-Day%20Forecast%20for%20Latitude%2037.99%C2%B0N%20and%20Longitude%2084.47%C2%B0W%20(Elev.%20997%20ft)&ate=AT-xa-05b2d91f18c9cc/-/5502d1e2936aa998/2/546d78242e2a84f4&frommenu=1&uid=546d78242e2a84f4&ct=1&pre=http%3A%2F%2Fwww.weather.gov%2F&tt=0&captcha_provider=nucaptcha))



Overcast

55°F

13°C

Humidity 55%
 Wind Speed SE 8 mph
 Barometer 30.25 in (1024.0 mb)
 Dewpoint 39°F (4°C)
 Visibility 10.00 mi
 Wind Chill 53°F (12°C)
 Last update on 13 Mar 7:54 am EDT

Current conditions at
Lexington, Blue Grass Airport (KLEX)

Lat: 38.04°N Lon: 84.61°W Elev: 978ft.

More Local Wx ([obslocal.php?warnzone=KYZ041&local_place=4 Miles SSW Lexington KY&zoneid=EDT&offset=14400](#)) | 3 Day History
 (<http://www.weather.gov/data/obhistory/KLEX.html>)
 | Mobile Weather
 (<http://mobile.weather.gov/index.php?lat=38.04&lon=-84.61>)

4 MILES SSW LEXINGTON KY

For More Weather Information:
 Louisville, KY Local Forecast Office
 (<http://www.crh.noaa.gov/lmk/>)

7 Day Forecast

Today	Tonight	Saturday	Saturday Night	Sunday	Sunday Night
100%	100%	90%	30%		
Showers	Showers	Showers	Chance Showers	Sunny	Mostly Clear
High: 59 °F	Low: 54 °F	High: 61 °F	Low: 38 °F	High: 59 °F	Low: 36

DETAILED FORECAST

Today	Occasional showers. High near 59. South wind 7 to 10 mph. Chance of precipitation is 100%. New precipitation amounts between a half and three quarters of an inch possible.
Tonight	Occasional showers. Low around 54. South wind around 9 mph. Chance of precipitation is 100%. New precipitation amounts between a half and three quarters of an inch possible.
Saturday	Periods of showers. High near 61. Southwest wind 7 to 9 mph becoming west in the afternoon. Chance of precipitation is 90%. New precipitation amounts between a quarter and half of an inch possible.
Saturday Night	A 30 percent chance of showers before 9pm. Cloudy, then gradually becoming partly cloudy, with a low around 38. Northwest wind around 7 mph.
Sunday	Sunny, with a high near 59. North wind 5 to 7 mph.
Sunday Night	Mostly clear, with a low around 36.
Monday	Sunny, with a high near 68.
Monday Night	Partly cloudy, with a low around 44.
Tuesday	Partly sunny, with a high near 53.
Tuesday Night	Partly cloudy, with a low around 31.

Wednesday	Mostly sunny, with a high near 53.
Wednesday Night	Partly cloudy, with a low around 36.
Thursday	A 20 percent chance of showers. Partly sunny, with a high near 58.

ADDITIONAL FORECASTS AND INFORMATION

ZONE AREA FORECAST FOR FAYETTE COUNTY, KY (MAPCLICK.PHP?ZONEID=KYZ041)

Forecast Discussion (http://forecast.weather.gov/product.php?site=LMK&issuedby=LMK&product=AFD&format=CI&version=1&glossary=1)	Hourly Weather Graph (MapClick.php? lat=37.9887&lon=-84.4777&unit=0&lg=english&FcstType=gra
Printable Forecast (MapClick.php? lat=37.9887&lon=-84.4777&unit=0&lg=english&FcstType=print&TextType=2)	Table of Forecasts (MapClick.php? lat=37.9887&lon=-84.4777&unit=0&lg=english&FcstType=dig
Text Only Forecast (MapClick.php? lat=37.9887&lon=-84.4777&unit=0&lg=english&FcstType=text&TextType=1)	Point Forecast (MapClick.php? lat=37.9887&lon=-84.4777)
	Air Quality Forecasts (http://weather.gov/qa/probe_aq_data.php?latitude='.\$lat_search.'&longitude='.\$lon_search.')
	International System of Units (MapClick.php? lat=37.9887&lon=-84.4777&FcstType=text&unit=1&lg=en)
	About Point Forecasts (http://www.srh.weather.gov/srh/jetstream/webweather/pinpoi)
Local Climatology (http://www.weather.gov/climate/index.php?wfo=lmk)	River Info / AHPS (http://water.weather.gov/ahps2/index.php?wfo=lmk)
Digital Forecast (http://www.crh.noaa.gov/product.php?site=lmk&product=AFM&issuedby=LMK&glossary=1)	Science / Technology (http://www.crh.noaa.gov/lmk/?n=scienceandtechnology)
Graphical Forecasts Home (http://www.nws.noaa.gov/forecasts/graphical/sectors/kenky.php)	Preparedness (http://www.crh.noaa.gov/lmk/?n=preparedness)
Hazardous Weather Outlook (http://www.crh.noaa.gov/product.php?site=lmk&product=HWO&issuedby=LMK&glossary=1)	Severe Weather Data (http://www.crh.noaa.gov/lmk/?n=severe_wx_data)
	WFO Louisville Home (http://www.crh.noaa.gov/lmk/)
	Long Term Forecasts (http://www.crh.noaa.gov/lmk/?n=one_stop_climate)

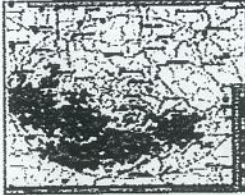
ABOUT THIS FORECAST

Point Forecast:	4 Miles SSW Lexington KY 37.99°N 84.47°W (Elev. 997 ft)
Last Update (http://www.weather.gov/glossary/index.php?word=Last+update):	6:56 am EDT Mar 13, 2015
Forecast Valid (http://www.weather.gov/glossary/index.php?word=forecast+valid+for):	9am EDT Mar 13, 2015-6pm EDT Mar 19, 2015

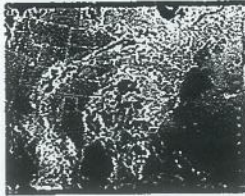
Forecast Discussion (<http://forecast.weather.gov/product.php?site=LMK&issuedby=LMK&product=AFD&format=C1&version=1&glossa>)

[KML](#) ([MapClick.php?lat=37.9887&lon=-84.4777&unit=0&lg=english&FcstType=kml](#)) [XML](#) ([MapClick.php?lat=37.9887&lon=-84.4777&unit=0&lg=english&FcstType=dwml](#))

RADAR & SATELLITE IMAGES



(<http://radar.weather.gov/radar.php?rid=jkl&product=NOR&overlay=11101111&loop=no>)



(<http://www.goes.noaa.gov/ECIR4.html>)

PAST WEATHER (<http://www.nws>)

Past Weather (<http://www.nws.noaa>)
Climate Monitoring (<http://www.cpc.ncep.noaa.gov/prod>)
Heating/Cooling Days (<http://www.n>)
Monthly Temps (<http://www.nws.noa>)
Records (<http://www.nws.noaa.gov/t>)
Astronomical Data (<http://aa.usno.n>)
Certified Weather Data (<http://www.ncdc.noaa.gov/oa/mpp/>)

ACTIVE ALERTS (<http://alerts.wea>)

Warnings By State (<http://alerts.wea>)
Excessive Rainfall and Winter Weath (<http://www.hpc.ncep.noaa.gov/ww.s>)
River Flooding ([http://water.weather.!](http://water.weather.))
current_color=flood¤t_type=al
Latest Warnings (<http://www.weathe>)
Thunderstorm/Tornado Outlook (<http>)
Hurricanes (<http://www.nhc.noaa.go>)
Fire Weather Outlooks (<http://www.s>)
UV Alerts (<http://www.cpc.ncep.noaa.gov/prod>)
Drought (<http://www.drought.gov/>)
Space Weather (<http://www.swpc.nc>)
NOAA Weather Radio (<http://www.n>)
NWS CAP Feeds (<http://alerts.weatf>)

CURRENT CONDITIONS (<http://www.w>)

Radar (<http://www.weather.gov/Radar>)
Climate Monitoring (<http://www.cpc.ncep.noaa.gov/products/r>)
River Levels (<http://water.weather.gov/ah>)
Observed Precipitation (<http://water.weat>)
Surface Weather (<http://www.nws.noaa.gov/om/osd/portal.s>)
Upper Air (<http://weather.noaa.gov/fax/bz>)
Marine and Buoy Reports (<http://www.nd>)
Snow Cover (<http://www.noahrs.noaa.gov/interactive/h>)
Satellite (<http://www.goes.noaa.gov>)
Space Weather (<http://www.swpc.noaa.g>)

FORECAST (<http://weather.gov/for>)

Local Forecast (<http://www.weather.gov/forecast>)
 Severe Weather (<http://www.spc.noaa.gov/forecast>)
 Current Outlook Maps (<http://www.hydro.meteor.gov/forecast>)
 Drought (<http://www.cpc.ncep.noaa.gov/drought>)
 Fire Weather (<http://www.weather.gov/fire>)
 Fronts/Precipitation Maps (<http://www.weather.gov/forecast>)
 Current Graphical Forecast Maps (<http://www.nws.noaa.gov/forecast>)
 Rivers (<http://water.weather.gov/ahps>)
 Marine (<http://www.nws.noaa.gov/om/marine>)
 Offshore and High Seas (<http://www.opc.ncep.noaa.gov/marine>)
 Hurricanes (<http://www.nhc.noaa.gov>)
 Aviation Weather (<http://aviationweather.gov>)
 Climatic Outlook (<http://www.cpc.ncep.noaa.gov/products>)

INFORMATION CENTER(<http://www.weather.gov/information>)

Space Weather (<http://www.spaceweather.gov>)
 Daily Briefing (<http://www.weather.gov/daily>)
 Marine (<http://www.nws.noaa.gov/om/marine>)
 Climate (<http://www.nws.noaa.gov/climate>)
 Fire Weather (<http://www.weather.gov/fire>)
 Aviation (<http://www.aviationweather.gov>)
 Forecast Models (<http://mag.ncep.noaa.gov>)
 Water (<http://water.weather.gov/ahps>)
 GIS (<http://www.nws.noaa.gov/gis>)
 Cooperative Observers (<http://www.nws.noaa.gov/om/coop>)
 Storm Spotters (<http://www.nws.noaa.gov/skywarn>)
 Tsunami (<http://www.tsunami.gov>)
 Facts and Figures (<http://www.economics.noaa.gov>)

WEATHER SAFETY (<http://weather.gov/safety>)

NOAA Weather Radio (<http://www.weather.gov>)
 StormReady (<http://www.weather.gov/stormready>)
 Heat (<http://www.nws.noaa.gov/om/heat>)
 Lightning (<http://www.lightningsafety.noaa.gov>)
 Hurricanes (<http://www.nhc.noaa.gov>)
 Thunderstorms (<http://www.weather.gov/om/severe>)
 Tornadoes (<http://www.weather.gov/om/severe>)
 Severe Weather (<http://www.weather.gov/om/severe>)
 Rip Currents (<http://www.ripcurrents.noaa.gov>)
 Safe Boating (<http://www.nws.noaa.gov/os/marine>)
 Floods (<http://www.weather.gov/om/severe>)
 Winter Weather (<http://www.weather.gov/om/winter>)
 Ultra Violet Radiation (<http://www.weather.gov/uv>)
 Air Quality (<http://www.weather.gov/air>)
 Damage/Fatality/Injury Statistics (<http://www.weather.gov/om/hazstat>)
 Red Cross (<http://www.redcross.org>)
 Federal Emergency Management Agency (<http://www.fema.gov>)
 Brochures (<http://www.weather.gov/om/brochures>)

NEWS (<http://weather.gov/news>)

Newsroom (<http://weather.gov/news>)
 Social Media (<http://weather.gov/social>)
 Events (<http://www.nws.noaa.gov/com/weather>)
 Pubs/Brochures/Booklets (<http://www.weather.gov/om/brochures>)

EDUCATION (<http://weather.gov/education>)

NOAA Economics (<http://www.economics.noaa.gov>)
 NOAA Education Resources (<http://www.education.noaa.gov>)
 Glossary (<http://www.weather.gov/glossary>)
 JetStream (<http://www.srh.noaa.gov/srh/jetstream>)
 NWS Training Portal (<http://www.weather.gov/training>)
 NOAA Library (<http://www.lib.noaa.gov>)
 Play Time for Kids (<http://www.weather.gov/om/reachout/kids>)
 For Students (<http://www.education.noaa.gov>)
 For Teachers (<http://www.nws.noaa.gov>)
 Brochures (<http://www.weather.gov/om/brochures>)
 Other Links (<http://www.weather.gov/om/reachout/links>)

ABOUT (<http://weather.gov/about>)

Organization (<http://weather.gov/organization>)
 Strategic Plan (<http://www.weather.gov/sp>)
 For NWS Employees (<https://sites.google.com/a/noaa.gov/nws-best-practices/>)
 International (<http://www.weather.gov/ia/home.htm>)
 National Centers (<http://weather.gov/organization>)
 Products and Services (<http://www.weather.gov/tg>)
 Glossary (<http://www.weather.gov/glossary>)
 Contact Us (<http://weather.gov/contact>)



US Dept of Commerce (<http://www.commerce.gov>)
National Oceanic and Atmospheric Administration
(<http://www.noaa.gov>)
National Weather Service (<http://www.weather.gov>)
Louisville, KY (<http://www.weather.gov/lmk>)

Disclaimer (<http://www.weather.gov/disclaimer>)
Privacy Policy (<http://www.weather.gov/privacy>)
Information Freedom of Information Act
Quality (http://www.cio.noaa.gov/Services_programs/info_quality)
Help (<http://www.rdc.noaa.gov/~foia/>)
Glossary (<http://www.weather.gov/about>)
Opportunities (<http://www.weather.gov/glossary>)
(<http://www.weather.gov/career>)



- Owner
- Architect
- Contractor
- Field
- Other

CHANGE ORDER

Project: CAC & Coroner reroof
Community Action Center reroof
Georgetown Street
Lexington, KY

Change Order Number: 3
Initiation Date: 04/06/2015
File Number: 201418.doc
Contract For:
Contract Date: February 02, 2015

To: Riddell Construction Inc.
4245 Richmond Rd
Irvine, KY 40336

You are directed to make the following changes in the contract:

Delete the rated door from the Office to the Storage room, close opening with drywall and match surrounding.
Modify circuits so that panelboard can be relocated and become surface mounted onto the rated wall.

See attached cost itemizations of PR#1 and PR#2.

Not valid until signed by both the Owner and The Architect.
Signature of the Contractor indicates hid agreement herewith, including any adjustments in the Contract or contract Time.

The original Contract Sum was.....	\$ 597,720.00
Net change by previous authorized Change Orders.....	\$000.00
The original Contract Sum prior to this Change Order was.....	\$597,720.00
The original Contract Sum will by decreased by this change order.....	\$247.62
The New Contract Sum including this Change Order will be.....	\$597,472.38
The Contract time will be unchanged.....	
The Date of Substantial completion as of the date of this Change Order therefore is June 2, 2015	

Authorized:

Architect:
Kesler Simpson Architects, LLC
3728 Willow Ridge Rd
Lexington, Kentucky 40514
Date: 4/6/15

JT Hulan Assoc. AIA

Contractor:
Riddell Const. Inc
4245 Rich. Rd.
Irvine, Ky. 40336
Date: 4/14/15
Rep. Hest. Pres.

Owner:
Lexington-Fayette Urban Co. Govt.
200 East Main Street, 4th Floor
Lexington, Kentucky 40507
Date: 4/8/2015



- Owner
- Architect
- Contractor
- Field
- Other

PROPOSAL REQUEST

Project:	CAC & Coroner reroofs	Proposal Request #:	01
Owner:	LFUCG	Date:	3/9/2015
To:	Riddell Construction 4245 Richmond Rd Irvine, KY 40336	File Number:	201418
		Original Contract Date:	November 13, 2014

*Please submit an **itemized** quotation for changes in the Contract Sum and/or Time incidental to proposed modifications to the Contract Documents described herein.*

THIS IS NOT A CHANGE ORDER NOR A DIRECTION TO PROCEED WITH THE WORK DESCRIBED HEREIN.

Description of Change(s):

Omit from the project the replacement of the rated door from the office to the storage room. This opening would be closed up with drywall and is to match surrounding.

Attachments:

Origination of Change(s): Owner (using agency) requested.

COST BREAKDOWN
PROPOSAL REQUEST NO. 1
Date: March 25, 2015

<i>Project Title:</i> Coroner's office and CAC Reroof				
<i>Program No. :</i> 				
<i>Contractor:</i> Riddell Construction, Inc.				
Item No. <input type="text"/>	<input type="checkbox"/> Addition <input checked="" type="checkbox"/> Deduction			
Description: 1. Delete the rated door from the office to the storage room. 2. Close opening with drywall and match surrounding finishes.				
Materials & Equipment				
Description	Unit	Quantity	Unit Cost	Total
1. Door, frame, and hardware	EA	1	\$ 849.00	\$ (849.00)
2. Gypboard	EA	1	\$ 15.88	\$ 15.88
2. 2" x 4"	EA	2	\$ 3.06	\$ 6.12
Total Cost			\$ (827.00)	
Labor				
Description	Unit	Quantity	Unit Cost	Total
1. Carpenter	Hr	4	\$ 41.62	\$ (166.48)
2. Carpenter	Hr	1	\$ 41.62	\$ 41.62
Total Cost			\$ (124.86)	
Subtotal Materials + Labor			\$ (951.86)	
Overhead @ 5%			\$ (47.59)	
Profit @ 10%			\$ (95.19)	
Total Cost			\$ (1,094.64)	



- Owner
- Architect
- Contractor
- Field
- Other

PROPOSAL REQUEST

Project:	CAC & Coroner reroofs	Proposal Request #:	02
Owner:	LFUCG	Date:	3/9/2015
To:	Riddell Construction 4245 Richmond Rd Irvine, KY 40336	File Number:	201418
		Original Contract Date:	November 13, 2014

*Please submit an **itemized** quotation for changes in the Contract Sum and/or Time incidental to proposed modifications to the Contract Documents described herein.*

THIS IS NOT A CHANGE ORDER NOR A DIRECTION TO PROCEED WITH THE WORK DESCRIBED HEREIN.

Description of Change(s):

Please provide pricing to modify circuits so that panelboard mounted in the firewall can be relocated and become a surface mount rather than flush mount unit.

Attachments:

Origination of Change(s): Found Condition

COST BREAKDOWN
PROPOSAL REQUEST NO. 2
Date: March 25, 2015

<i>Project Title:</i>	Coroner's office and CAC Reroof			
<i>Program No. :</i>				
<i>Contractor:</i>	Riddell Construction, Inc.			
Item No.	<input type="text"/>	<input checked="" type="checkbox"/> Addition	<input type="checkbox"/> Deduction	
Description:	1. Cost to modify circuits so that panelboard can be relocated and become surface mount.			
Materials & Equipment				
Description	Unit		Unit Cost	Total
			Total Cost	\$ -
Labor				
Description	Unit	Quantity	Unit Cost	Total
1. Electrician	Hr	14	\$ 52.61	\$ 736.54
			Total Cost	\$ 736.54
			Subtotal Materials + Labor	\$ 736.54
			Overhead @ 5%	\$ 36.83
			Profit @ 10%	\$ 73.65
			Total Cost	\$ 847.02