

RFP #41-2024



July 16, 2024

➔ **Indefinite Services
Contract for Division of
Engineering**

SUBMITTED TO

Lexington-Fayette Urban County Government
200 E. Main Street
Lexington, KY 40507

Lochner is pursuing the following
work categories:

Construction Inspection (pages 1-20)

Prequalifications:

- ✓ Construction Project Supervision
- ✓ Construction Engineering Services

Right-of-Way (pages 21-40)

Prequalifications:

- ✓ Relocation
- ✓ Acquisitions

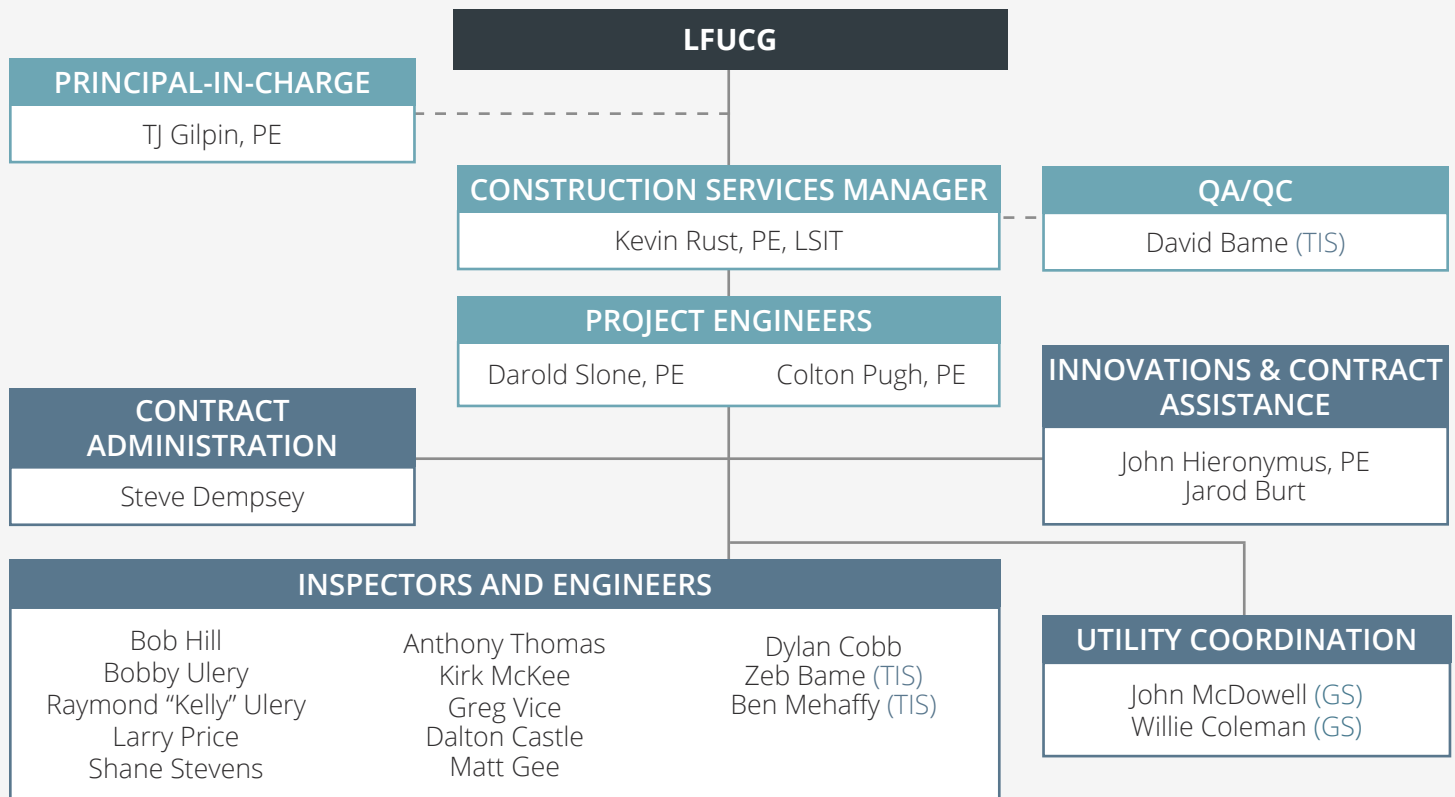
H.W. Lochner, Inc.



TJ Gilpin, PE | Vice President

TEAM ORGANIZATION

Lochner's team offers the Lexington-Fayette Urban County Government (LFUCG) highly-qualified and dedicated professionals to successfully address the projects anticipated under this Indefinite Services Contract. Kevin Rust, PE, will serve as Construction Services Manager, and the single point of contact for LFUCG. Kevin's responsiveness and hands-on leadership skills speak for themselves.



Legend:

(TIS) True Inspection Services (DBE)
(GS) Gresham Smith

Locality

Our Lexington office is conveniently located less than four miles from the LFUCG office. This close proximity allows us to respond quickly to any request, including meeting in person with LFUCG staff or visiting a project site.



TEAM QUALIFICATIONS

Lochner has partnered with TIS and Gresham Smith to perform the advertised services for this contract. **Lochner is prequalified in Construction Project Supervision and Construction Engineering Services.** Should additional services become necessary during project delivery, Lochner will obtain the services of a prequalified subconsultant.

“District nine has been using Lochner construction inspection services for several years and have a good, professional working relationship. They have always met our needs with dependable and knowledgeable employees. They have also fulfilled all requests and expectations in a timely manner. Having Lochner on contract is basically an extension of the highway department.”

- Steve Gunnell | Chief District Engineer, KYTC District 9

Key CEI Staff	Former KYTC Employee	Years of Experience	ACI Level I Certification	Aggregate Sampling Technician	Grade & Drain Level I Technician	Asphalt Field Technician or Asphalt Paving Best Practices	Structural Inspection Level I	KEPSC-RI Qualification
	Certifications							
TJ Gilpin, PE	✓	24	✓	✓	✓	✓	✓	✓
Kevin Rust, PE, LSIT	✓	34	✓	✓	✓	✓	✓	✓
Darold Slone, PE	✓	28	✓	✓	✓	✓	✓	✓
Colton Pugh, PE	✓	5	✓	✓	✓	✓	✓	✓
Bob Hill	✓	41						✓
Steve Dempsey	✓	36						
Bobby Ulery		25	✓	★	★	✓	✓	✓
Kelly Ulery		30	✓	★	★	✓	★	✓
Larry Price	✓	31	✓	✓	✓	✓	✓	✓
Shane Stevens	✓	19	✓	✓	✓	✓	✓	✓
Anthony Thomas	✓	29	✓	✓	✓	✓	✓	✓
Kirk McKee	✓	30	✓	✓	✓	✓	✓	✓
Matt Gee		10	✓	✓	✓	✓	✓	✓
Greg Vice	✓	29	✓	✓	✓	✓	✓	✓
Dalton Castle		5	✓	★	✓	★	★	✓
Dylan Cobb		5	✓	✓	✓	✓	✓	✓
Ben Mehaffy (TIS)		15	✓	✓	✓	✓	✓	✓
Zeb Bame (TIS)		5	✓	✓	✓	✓	✓	✓
John McDowell		34	★	★	★	✓	✓	✓
Willie Coleman		17	✓	✓	✓	✓	★	✓

★ = Currently enrolled to earn certifications



PROJECT SPOTLIGHT KYTC ANCILLARY STRUCTURE INSPECTIONS

In December 2021, tornadoes traveled across Western Kentucky, resulting in catastrophic damage to numerous communities. Within a week of the tornado hitting, KYTC Division of Traffic Operations reached out to Lochner requesting emergency inspections of impacted facilities across Districts 1, 2, and 3. Lochner responded immediately, sending multiple inspectors to the area's most severely impacted; Mayfield, Bowling Green, Dawson Springs, Benton, Madisonville, and Princeton. Over a three-week period, emergency inspections were performed on 81 total structures including traffic signal strain poles, high mast lighting poles, mast arm poles, and overhead sign support structures. Damage was assessed to help determine which facilities needed to be completely rebuilt versus those that were deemed safe to be reused.



PROJECT UNDERSTANDING

Lochner has performed construction inspection services in Kentucky since 2004 from our office in Lexington, KY. The Lochner staff is currently working on our 10th consecutive 2-year On-Call Contract for Statewide Highway and Bridge Inspection services for the Kentucky Transportation Cabinet. Through this contract, and many others, we have had a constant presence throughout Kentucky during this time. Our knowledge of the Lexington area is extensive and we have developed excellent professional relationships with the municipalities, environmental, planning, and permitting agencies. We understand the nuances of various project approaches, timelines for review, and goals and aspirations of the area. Our staff not only work in the area, but they live there too. We strive to make our communities the best that they can be for all residents, businesses, and other stakeholders.

We are excited to develop a productive relationship with the Lexington-Fayette Urban County Government (LFUCG) Team in the same manner. Throughout these contracts with KYTC, Lochner has provided timely response to the needs of KYTC and FHWA with highly qualified, experienced, and certified inspectors, engineers, surveyors, and transportation specialists in construction inspection, materials sampling and testing, traffic control inspections, and Critical Path Method schedule reviews.

PROJECT APPROACH

Lochner has extensive experience both in Kentucky and nationally with Construction Engineering Inspection (CEI) programs and currently has 24 employees assigned to CEI in Kentucky actively working in Districts 6 (Covington), District 9 (Flemingsburg), and District 12 (Pikeville). Lochner has also worked in other Districts across the state of Kentucky including District 3 (Bowling Green), District 5 (Louisville), District 7 (Lexington), District 8 (Somerset), District 10 (Jackson), and District 11 (Manchester). Several of Lochner's engineers and construction inspectors are employees who have previously worked for KYTC on Federal Aid projects and bring intimate knowledge of KYTC Standard Specifications and KYTC practices and procedures. Lochner also maintains a reserve list of certified inspectors who have previously worked on KYTC projects, ready to respond when needed.

Lochner's engineers and inspectors are construction experts with all the required certifications and bring skills in contract administration, traffic and safety, asset management/maintenance, and materials and construction quality control/quality assurance. As the lead representative for our clients on project sites, our experts make sure that the approved designs are followed, projects are built to industry and state standards and specifications, and that field engineering is available to contractors and construction crews throughout the process. The insights we have gained from over more than 75 years of engineering and inspection experience uniquely enable us to provide creative and innovative solutions to CEI programs that protect investments and add value to projects.

Lochner inspectors have experience that includes project oversight and extensive training specific to construction inspection work. In addition to the certifications required for this contract, our proposed inspection personnel maintain multiple additional certifications, allowing Lochner the flexibility to assign staff where the need is greatest to help maintain the project schedule and quality. With our inspectors having an average of more than 25 years working on construction projects, our team has the training, experience, and certifications to immediately go to work for LFUCG on any assignment.

Staffing

Kevin Rust, PE, will serve as the Construction Services Manager. He has over 33 years of transportation experience, 25 of those years being spent in KYTC District 6. He is currently serving as the Project Engineer on Donaldson Road (KY 236) in Boone and Kenton Counties (CID 221059), KY 3076 (Mineola Pike) in Boone County (CID 221309), Clay Wade Bailey Bridge Rehabilitation in Kenton County (CID 242976), Crescent Avenue Sound Wall (CID 231337) in Kenton County, Houston Road (CID 231328) in Kenton County, and previously served as Project Engineer for the I-75/I-71 Turnaround project in Kenton County (CID 211349) in 2022. Kevin will coordinate all the construction contract administration activities which will include reviewing and approving all DWR's, contractor pay estimates, working day statements, and change orders if the need arises, on the projects where he serves as the Construction Services Manager, and will guide the rest of the inspection staff in their assignments. He is adept at resolving potential claims or changed conditions brought forth by the contractor and resolving them at the project level. While with KYTC D-6, in his role in the Resident's Office or as Branch Manager, Kevin never had a claim or disagreement that had to elevate to the level of Central Office Construction although he always consulted with the Central Office to ensure the dispute could be settled and was fair to both KYTC and the contractor.

Darold Slone, PE will serve as a Project Manager and Resident Engineer on this contract. Darold has nearly 28 years of transportation experience, 27 years spent in KYTC District 12. He has worked on a wide range of transportation projects from small maintenance projects to large grade and drain construction projects. Darold has also managed and overseen work resulting from numerous natural disasters including several flood events, ice storms, and a tornado event. When the 2022 flood occurred, Darold was assigned to manage the KYTC response and recovery efforts in Knott County. He managed resources, performed damage assessments, led efforts to build temporary emergency diversions at flood-damaged bridges and culverts, reviewed emergency structure design plans, and oversaw the construction of several emergency bridges and culverts in Knott and Floyd counties.

Colton Pugh, PE is professional engineer with a growing background in pre-construction and construction engineering and will also serve as a Project Manager and Resident Engineer. Upon graduation and before his time at Lochner, he spent 1 year as a Water Resource EIT, 1 year doing Stream Restoration Construction and 2 years as a EIT in a KYTC District 6 section office. As a designer his projects included dam breach analysis, steady and unsteady floodplain studies, and stormwater management. He gained experience in HEC-RAS, HEC-HMS, and Civil 3D. While working in construction, he served as a Field

Engineer where he was responsible for ensuring accuracy and completion of projects. This work was done for the KY Department of Fish and Wildlife. *As an intern for the same construction company, he served as a Field Engineer Intern for LFUCG on Cane Run Stream Restoration as a part of the 2017 LFUCG consent decree.*

Training the Next Generation: In addition to our qualified team listed in the organization chart, Lochner is committed to the future of Highway Construction Inspection. We have been actively working to hire interns to fulfill Lochner's vision for "training the next generation" to address the need for future qualified construction inspectors. In our previous contract cycle with KYTC, we brought on three interns, all of whom returned for a second year with Lochner and one who graduated in 2024. Following graduation, Lochner offered full-time employment, and this intern became a full time employee. Two new interns were brought on for work this summer.

Safety

As engineering professionals, our primary duty is to protect the safety of the public. Safety is and will always be priority number one. That is an easy thing to say, but the philosophy is much harder to implement. Our safety operations begin in the office, where we scope out inspection sites with challenging conditions to identify an optional safe staging area and assess any potential site risks. Lochner inspection vehicles are stocked with standard first aid kits and fire extinguishers, and multiple inspectors maintain CPR/First Aid certifications. All inspectors are outfitted with the proper Personal Protective Equipment including but not limited to steel toe shoes, high visibility apparel, hard hats, hearing protection, fall protection, and safety goggles/glasses. Lochner has both a Radiation Safety Officer and an OSHA-10 trainer on staff. Lochner also has staff who are trained by the National Institute for Certification in Engineering Technologies (NICET). Lochner's Wade Abbott, SET assisted with developing the NICET Highway Construction Inspection exam.

Maintenance of Traffic

Maintenance of Traffic is a key component of every project. To address this, Lochner intends to utilize **Bob Hill** as the Work Zone Traffic Control Coordinator. Bob has 45 years of experience in the transportation industry. He is an industry leader, and a local KYTC expert when it comes to traffic management planning and traffic control reviews. His knowledge in developing traffic control plans, reviews, and coordination with the community brings a unique skill set. Bob is able to perform independent reviews whenever a traffic pattern is about to change, the project is moving into a new phase, or simply when an independent review is requested. His Work Zone Traffic Control reports are also used to generate stand-alone DWR for traffic control for various projects.

Steve Dempsey brings another level of expertise with his office management skills. Steve is familiar with construction file structures in various software programs and does a great job of keeping the inspectors on task bi-weekly with the materials sampling checklists. Steve makes sure that if a material sample or certification is needed, the inspector is getting the information quickly. Steve then inputs the verification testing information and data into the appropriate database. Steve also assists in preparing and processing the pay estimates, receives and catalogs the contractor's payrolls, and verifies that all documents have been received. Steve is diligent in pursuing any missing items. Steve ensures compliance with federal aid projects when it comes to the paperwork end of construction engineering and inspection.

Materials Sampling and Testing

Materials Sampling and Testing are a major part of any construction project. Greg Vice, formerly of KYTC District 9 Materials, and Lochner's Materials Sampling and Testing Specialists. Greg has over 28 years of experience on KYTC projects. Greg has extensive knowledge in quality assurance and quality control and has performed QA/QC inspection on asphalt, concrete, aggregates, and other materials frequently used in KYTC contracts. He is familiar with the personnel at KYTC's various laboratories, along with the standard material sampling, testing, and laboratory methods. Matt Gee came to Lochner after working at Mountain Enterprises for nearly 10 years at Mountain's asphalt plants and brings another dimension to understanding and inspecting asphalt pavements as well as other quarry materials.



Material Sampling and Testing Inspector, Matt Gee

Innovation

Innovation will be front and center in our support to the City of Lexington. Lochner's Lexington roadway design office has recently piloted drone technology for a project in Eastern Kentucky to obtain pre-disturbance imagery in preparation for this project. This information, along with additional drone flights throughout the project life, will provide critical documentation for KYTC and illustrate major project milestones as well as conditional, partial, and final acceptance of the project. The project is primarily out of public view and imagery will be made available to the Department to supplement media releases and social media updates maintaining awareness and confidence in this high-ground development.

An additional innovative aspect of the drone mapping

software that Lochner utilizes is the ability to take project photos in the field and pin them to specific locations on the mapping. This feature will provide additional project documentation as photos taken by inspectors and engineers can be uploaded utilizing a mobile app, and those photos are then part of the project imagery file that can be viewed and shared among the project team.

Responsiveness

The Lochner team is highly responsive to project requirements as well as emergency and unexpected situations. As evidence of this quick reaction, in December 2021, tornadoes traveled across Western Kentucky, resulting in catastrophic damage to numerous communities. Within a week of the tornado hitting, the KYTC Division of Traffic Operations reached out to Lochner requesting emergency inspections of impacted facilities across Districts 1, 2, and 3. Lochner responded immediately, sending multiple inspectors to the area's most severely impacted communities. Over a three-week period, emergency inspections were performed on 81 total structures.

Quality Assurance

Lochner's rigorous quality assurance and quality commitment programs form the core of our construction inspection efforts. We appreciate the potential opportunities to work with the LFUCG Team and we value our relationship with our clients, past, present, and future. We are confident in our ability to continue to provide the required services to the same high standards of performance and quality that our clients have come to expect. The quality of work we provide to our clients creates long-lasting, professional relationships, which leads to repeat business. We are committed to LFUCG and are proposing an experienced and knowledgeable team ready to assist with this contract. We ask for your favorable consideration of this proposal so that we may continue to provide construction inspection services in the Commonwealth of Kentucky.

"Lochner has provided construction inspection services to District 6 for several years. They provide a professional and well versed staff. Their dependability and flexibility are valuable making them the obviously solution to our expanding inspector needs. They have a keen understanding for the policies and procedures of KYTC. Their experienced inspectors, engineers, and support staff engage in creative problem solving and collaboration. KYTC District 6 considers Lochner a transportation partner and have been very pleased with the services they provide."

- Bob Yeager, PE | Chief District Engineer, KYTC District 6


FIRM

Lochner

EDUCATION

BS, Civil Engineering, University of Kentucky

REGISTRATION

Professional Engineer: KY #24752

CERTIFICATIONS

- KYTC Advanced Leadership Academy
- KYTC Project Development Academy
- Safety Inspection of In-Service Bridges

TJ Gilpin, PE

Principal-in-Charge | 24 Years of Experience

TJ is an experienced project manager and engineer with an extensive background in asset maintenance and construction engineering. TJ is currently managing Lochner's contract with KYTC for structural sign support inspections. He previously served as a Maintenance Engineer and Section Engineer for KYTC District 4 and as a Field Engineer for the KYTC Division of Maintenance in the Central Office for over 12 years. His experience includes roadway rehabilitation, bridge inspection, drainage structure repairs/replacement, construction inspection, roadway embankment construction/repair, with experience writing, reviewing, and interpreting technical specifications for contracts on highway maintenance and operations. TJ has worked closely with various Federal, State, and local governmental agencies as well as engineering consultants on a variety of highway projects. TJ's technical expertise includes work zone traffic control and MOT plans, structural inspection engineering, and project management.

Relevant Experience

Donaldson Highway & Mineola Pike Widenings | KYTC | Boone County, KY Principal. Design for widening of KY 236 (Donaldson Highway) and KY 3076 (Mineola Pike) to five lanes, each with two-way center turn lanes, intersections, new stormwater detention, and pedestrian facilities.

Statewide Highway and Bridge CEI | KYTC | Statewide, KY Project Manager. Responsible for assisting with project engineering, managing inspection staff and project inspection needs, contract support and project documentation, and materials sampling. Actively involved in the Gallatin County US 42 Tie-back project, providing engineering and inspection support and project progress reviews.


FIRM

Lochner

EDUCATION

BS, Civil Engineering, University of Kentucky

REGISTRATION

Professional Engineer: KY #19121

Land Surveyor in Training

CERTIFICATIONS

- Highway Structural Inspection
- Safety Inspection of In-Service Bridges

Kevin Rust, PE, LSIT

CEI Program Manager & Innovations and Contract Assistance | 34 Years of Experience

Kevin holds an extensive background in design, CEI, and maintenance projects. His experience includes design and CEI services for roadway, bridge, and retaining wall projects of a variety of sizes and scales. His technical expertise encompassing inspection, engineering, MOT, and construction management systems will provide valuable insights on constructability for this contract. *Kevin formerly served as KYTC District 6 TEBM of Project Delivery and Preservation.*

Relevant Experience

On-Call CEI Services | KYTC | Statewide, KY Inspector. On-Call CEI services including various projects such as multiple phases to construct a new alignment on US 460, Eastern Kentucky Emergency Bridge Replacements, pavement inspection on KY 680 new alignment, inspection services for KY 2557 Justell Bridge Repairs, and inspection services for KY 377 highway safety improvements.

Donaldson Highway & Mineola Pike Widenings | KYTC | Boone County, KY Project Manager/Resident Engineer. Design for widening of KY 236 (Donaldson Highway) and KY 3076 (Mineola Pike) to five lanes, each with two-way center turn lanes, intersections, new stormwater detention, and pedestrian facilities.

US 42 Landslide and Reconstruction | KYTC | Gallatin, KY Project Manager. This ongoing project corrects major slope failures, reconstructs US 42, and installs a soldier beam tied-back retaining wall. Lochner is responsible for the subgrade construction inspection services and assisting in the administration and monitoring of the contract.



FIRM

Lochner

EDUCATION

BS, Civil Engineering, University of Kentucky

REGISTRATION

Professional Engineer: KY #21494

CERTIFICATIONS

- ACI Level I
- Aggregate Sampling Tech.
- Grade & Drain Level I & II
- Asphalt Paving Best Practices
- Structural Inspection Level I
- KEPSC Roadway Inspector
- Work Zone Traffic Control Supr.
- KYTC Utility Coordination

Darold Slone, PE

Project Engineer | 28 Years of Experience

Darold is an experienced engineer with 27 years working with KYTC. During that time, he served as a traffic engineer, a maintenance engineer, and an Engineering Branch Manager. His experience includes planning, assigning, coordinating, and supervising the work of professional engineers, technical staff, and other skilled employees primarily in the construction and maintenance of highways. He has provided management oversight on many highway construction contracts involving various levels of complexity such as large grade and drain projects, bridge and culvert replacements, slide repairs, roadway alignment improvements, pavement rehabilitations, resurfacing, and guardrail installations. His work history includes navigating complex project issues such as right of way concerns, utility impacts and relocations, mining and other geotechnical impacts, change orders, contractor shutdowns, and claims. He has performed many project final inspections and has managed the finalization of numerous contracts.

Darold was directly involved in the recovery efforts from the July 2022 eastern Kentucky floods which included evaluating impacted highways and drainage structures, constructing short-term detours, overseeing work to expedite repair to damaged facilities, and managing debris removal efforts.

Relevant Experience

Emergency Bridge Replacements | Various Counties, KY
KYTC Branch Manager. Following the 2022 East Kentucky floods, many bridges and culverts were required to be replaced due to severe damage. Darold provided damage assessments for impacted structures, designed and led efforts to quickly build temporary access diversions, participated in design reviews, and managed the administration of contracts to rebuild several bridges and culverts in Knott and Floyd Counties.

Colton Pugh, PE

Project Engineer | 5 Years of Experience

Colton is professional engineer with a growing background in pre-construction and construction engineering. Upon graduation and before his time at Lochner he spent 1 year as a Water Resource EIT, 1 year doing Stream Restoration Construction and 2 years as a EIT in a KYTC District 6 section office. While working in construction, Colton served as a Field Engineer where he was responsible for ensuring accuracy and completion of projects. Colton also attended the KYTC Construction Management Academy.

Colton previously served as a Field Engineer Intern for LFUCG on Cane Run Stream Restoration as a part of the 2017 LFUCG consent decree

Relevant Experience

Clay Wade Bailey Bridge Maintenance | KYTC | Kenton County, KY
Lead Inspector. Maintenance performed on the Kentucky Approach and bridge. He oversaw expansion joint removals, expansion joint maintenance, expansion joint replacements, drainage repairs and retrofits, steel repair on both girders and floor beams, post-tensioning of one of the piers in the Ohio River.

KY1566, KY1996, KY2921 Drainage Improvement and Paving | KYTC | Campbell County, KY

Lead Inspector. Drainage improvement project that called for the removal and replacement of several culverts. The primary replacement was a 24' wide precast box culvert. He over saw the removal of the old culvert, placement of the new culvert, and the concrete pour of the headwalls.



FIRM

Lochner

EDUCATION

MS and BS, Biosystems Engineering, University of Kentucky

REGISTRATION

Professional Engineer: KY #38768

CERTIFICATIONS

- ADA: Sidewalk Facilities
- Highway Structural Inspection
- Work Zone Traffic Control Supr.
- Grade and Drain Level I & II
- Pavement Marking Insp.Tech.



Bob Hill
Inspector/Work Zone Coordinator

Bob has over 45 years of experience in highway and drainage design, traffic data collection, transportation planning and studies, public involvement and consensus building, bike and pedestrian issues, and traffic control development and inspection. Bob recently served as the Work Zone Traffic Control Coordinator for the Texas Turnaround, and Mineola, I-471, I-275, and I-75 Projects, and provides inspection services for the reconstruction of Donaldson Road.

As KYTC's District 6 Traffic Control, Incident Management, and Emergency Management Coordinator, Bob's duties included developing and reviewing traffic control plans; field reviewing and inspecting traffic control; coordinating traffic control with cities, counties and adjoining states; coordinating with emergency responders on road closures; and serving as Chairman of the District's Incident Management Task Force.

"Bob (Hill) has been a great and valuable resource on several projects through the on-call contract. His knowledge of traffic control has been very useful on both the on-call contract projects as well and other projects in District 6."

— Tyler Johnson | KYTC D6, Transportation Eng. Supervisor



Steve Dempsey
Contract Administration

Over his 35-year career, Steve has been involved in the administration of KYTC construction contracts totaling over \$305M. Projects include asphalt resurface, guardrail, bridge deck restoration, bridge deck restoration, bridge painting, interstate rehab, cable barriers, high friction surface, new bridge and major roadway construction. His areas of expertise include contract administration and documentation, Sitemanager, LIMMS/Material sampling and certification, and project closeout/final documentation. Steve holds a Bachelor of Science degree in Construction Technology from Northern Kentucky University. In addition Steve has received certification as an Asphalt Paving Technician, and additional training in pavement preservation, traffic incident management, and post award contract management. His project experience includes:

- KYTC's On-Call Statewide Highway & Bridge CEI Contract
- I-71/I-75 Texas Turnaround Project
- US 42 Landslide Repair/Tie Back Wall
- Mineola Pike Rehabilitation
- KY 8 Bridge Rehabilitation
- I-75 NB Pavement Rehabilitation
- US 42 Widening



Bobby Ulery
Inspector

Bobby has over 25 years of experience in highway construction and paving operations. He has attended pre-construction meetings, developed realistic schedules for work completion and collaborated and coordinated with city, county and state officials on projects. He is also adept at analyzing engineering drawings to ensure that KY specifications and regulations are met.

Bobby has led teams and performed supervision tasks to maintain safety on all projects, and ensured training of all staff assigned. He has also coordinated and worked on traffic control issues and performed project planning and coordination with contractors, state officials and EMS.

He is currently serving as lead inspector on the Crescent Ave. Sound Wall.

Bobby is a KYTC Qualified Pavement Marketing Inspection Technician. He also holds a Traffic Control Supervisor Certification.



Kelly Ulery
Inspector

Kelly has over 30 years of experience in highway construction and pavement striping operations. He has attended pre-construction meetings, developed realistic schedules for work completion and collaborated and coordinated with city, county and state officials on projects. He also worked closely with contractors to ensure compliance in the transportation and handling of waste during projects.

Kelly has led teams and performed supervision tasks to maintain safety on all projects, and ensured training of all staff assigned. He has also coordinated and worked on traffic control issues and performed project planning and coordination with contractors, state officials and EMS. Additionally he completed daily project reports for regulatory compliance and quality assurance measures.

Kelly is a KYTC Qualified Pavement Marketing Inspection Technician. He also holds a Traffic Control Supervisor Certification.



Larry Price

Inspector

Larry is a seasoned highway construction inspector with over 30 years of experience. He joined Lochner after retiring from KYTC as a Transportation Engineer Technologist III and has a wide range of experience including grade and drain, steel and concrete structures, drainage, erosion control, and paving projects. Most notably, Larry has performed inspections for various projects in KYTC Districts 6 and 9 under Lochner's on-call Statewide Highway and Bridge CEI contract. Drawing on his extensive experience, he provides strict attention to detail and is adept at his understanding of the full contract requirements for each assignment. In addition to his work on the CEI Statewide Contract, he has also participated in the following projects:

- Donaldson Highway Reconstruction
- Brent Spence Bridge Emergency Repair
- I-71/I-75 Texas Turnaround Project

"I have worked with Larry Price on multiple projects such as a steel truss bridge rehab and bridge maintenance project on I-64. Larry showed the utmost professionalism and attention to detail that helped the projects progress smoothly while fulfilling all contract requirements."

— Kyle Bidwell, PE | KYTC D6, Morehead Sect. Super.



Anthony Thomas

Inspector

Anthony is a highway and bridge construction inspector with over 28 years of experience in the transportation industry, including as an inspector for KYTC's Department of Highways. Leveraging this experience, Anthony brings an intimate knowledge and understanding of KYTC standards including specifications, plans, and procedures. He has participated in numerous preconstruction and construction planning meetings and has a gift for visualizing projects before they reach the construction phase. His experience spans a variety of projects with grade and drain, bridge construction, asphalt and concrete paving, and safety projects. Some projects of note include the new US 68 corridor from the AA Highway to the Ohio River, which involved excavation and embankment and construction of a new bridge over Lawrence Creek; the new US 68 (Maysville Bypass) corridor from the existing US 68 corridor to the AA Highway including grade, drain, new bridges and culverts; the new KY 57 corridor in Fleming County from KY 11 to Sleepy Run; and the KY 32 bridge replacement over Scrubgrass Creek in Nicholas County.



Shane Stevens

Inspector

Shane has over 18 years of experience and previously worked for KYTC as an engineering technologist and now serves as a Senior Inspector for Lochner. Shane holds numerous certifications including ACI Level 1, Aggregate Sampling Technician, Asphalt Field Technician, Work Zone Traffic Control Technician, Grade and Drain Level 1, Structural Inspection Level 1 and KEPSC Roadway Inspector. While employed with Lochner he provided inspection services on the following projects:

- KYTC Statewide On-Call Inspection Contract
- I-64 Rehabilitation (13 miles across Clark & Fayette Counties)
- I-64 Rehabilitation in Rowan County
- I-64 Rehabilitation in Carter County

When his contract assignments are complete, Shane will have overseen the I-64 rehabilitation from Lexington to Ashland.

"Shane Stevens with Lochner has worked for me on the I-64 rehab project in Rowan County. He has been very professional and dependable throughout the project while providing great insight into solving various problems that have occurred."

— Kyle Bidwell, PE | KYTC D6, Morehead Sect. Super.



Kirk McKee

Inspector

Kirk joined Lochner in 2019, bringing with him 25 years of KYTC inspection experience. His responsibilities prior to joining Lochner included overseeing inspections on highway projects to ensure the work was performed to the project specifications. Kirk's inspection experience covers a wide range of projects including grade and drain, bridges, HSIP, pavement rehabs, bridge overlays, and asphalt pavements overlays.

Some of Kirk's projects include the greenway construction of US 68 (Maysville Bypass) in Mason County; the AA Highway widening from US 68 to KY 435 in Mason County; the KY 32 widening from KY 156 to the Rowan County Line in Fleming County; the William Harsha Bridge deck overlay; and the US 68 Lawrence Creek Bridge repair in Mason County. Since joining Lochner, he has contributed heavily to the KYTC Statewide Highway and Bridge contract, providing detailed inspection on various resurfacing and HSIP projects.

Kirk is experienced with SiteManager and LIMS and has performed many project finals during his career. Kirk is used to dealing with complicated funding lines as many of his projects have been a blend of Federal and State funds.



Matt Gee

Inspector

Matt has over 10 years of experience as an Inspector. Prior to joining Lochner, Matt served as a Quality Control

Technician, performing asphalt and aggregate testing, maintaining records, and advised paving crews on placement methods to achieve required densities. He holds numerous required certifications including ACI Level 1, Aggregate Sampling Technician, Asphalt Superpave Technician, Work Zone Traffic Control Technician, KEPSC Roadway Inspector, Grade & Drain Level 1.

On the I-64 Rehabilitation Project for KYTC, Matt has taken the lead on marking core locations and ensuring the proper procedures are followed to verify pavement and joint densities. He also assisted on the inspection to ensure proper pavement preparation, adequate tack coat, and quality paving operations. He verifies all traffic control devices are in accordance with MUTCD and KYTC Standards and completes all project documentation.

“Mr. Gee has used his asphalt background to great benefit on the I-64 paving project. His knowledge of asphalt paving and quality control has proved vital to ensure the contractor follows all KYTC specs and the project proposal...[he] actively seeks out as knowledge about the current construction activities and asks excellent questions. Mr. Gee has been extremely helpful so far on my construction project and I would use him on any D-7 future project, if needed.” — Chris Heil, PE | KYTC, Winchester Section Supervisor



Dylan Cobb

Inspector

Since joining the firm in 2022, Dylan has worked on interstate resurfacing, primary road resurfacing, and this past summer,

has been an integral part of Lochner’s CEI team for the reconstruction of Donaldson Road in Boone County. He also provided inspection support on Lochner’s On-Call Statewide Structural Support Inspection contract with KYTC. Dylan will also be able to serve as a Work Zone Traffic Control Specialist.



Greg Vice

Inspector/Materials Sampling and Testing Specialist

Greg has 28 years of experience serving as a Transportation Engineering

Technologist III and senior inspector, verifying construction documentation conforms to quality assurance standards and client requirements. Greg also performs quality inspection of asphalt, concrete, aggregate, and other materials used in KYTC contracts as well as documents materials testing. Under Lochner’s On-Call Statewide Highway and Bridge CEI contract for KYTC, he is able to help out the lab during the busy asphalt paving season and fill in out in the field when the need arises. Greg can pull “double duty” and is always willing to do so.

“Our District 9 Materials lab needed an experienced Materials technician to support our office’s sampling and testing on projects in the Eastern part of the district. Lochner came to our assistance and was able to provide Greg Vice to our office staff on the start date that we requested. [At the time,] Greg had 27 years of materials testing and sampling experience and was immediately able to jump in and take the lead on several projects. Greg has been an integral part of the District 9 Materials lab for the past year.” — Rick Dailey, District 9 Materials



Dalton Castle

Inspector

Dalton is currently pursuing a BS in Civil Engineering from the University of Kentucky while taking advantage of the

robust co-op program at Lochner. He is gaining hands-on experience and knowledge by supporting projects throughout KY and TN. He has provided inspection support on the On-Call Statewide Structural contract with KYTC. He also is involved inspecting the construction of what will become the tallest bridge in the State of Kentucky on US 460 in Pike County. The Pikeville Section Office has taken advantage of Dalton’s climbing skills and Dalton has verified the torquing of the bolts performed by the contractor for this large steel structure. He has also worked on the KYTC District 12 Emergency Bridge Replacements throughout Pike and Knott Counties.

“With the never ending workload..., I requested an EIT to help keep up with construction projects. While I did not receive a certified EIT, I gained an employee that has exceeded expectations in Dalton Castle. His only experience prior to his arrival...was inspection of an asphalt project on I-64 and the basics of SiteManager. Since working here, he has caught onto what we expect rapidly. He has been the lead inspector on multiple bridge projects, assisted with large concrete pours (testing, sampling, etc), and verified the torque/fastening of bolts and connections on steels girders. He has also demonstrated an understanding of roadway grade, the ability to read roadway and bridge plans, and the ability to calculate quantities. Dalton has far exceeded what I envisioned when I made the request for assistance. His work ethic has been unmatched and I could honestly trust him to tackle any task that may arise comfortably.” — Vince Hayes | KYTC, Pikeville Section Engineer



Ben Mehaffy
Inspector | True Inspections

Ben Mehaffy is a skilled professional with over six years of extensive experience in the concrete and general inspection industry. Recent experience includes construction inspection for the widening and safety improvement project along KY 236 (Donaldson Road) between KY 842 (Houston Road) and KY 3076 (Mineola Pike). He also has expertise in quality control and inspection and effectively collaborates with stakeholders, which makes him an invaluable asset to any project. His commitment to ensuring compliance with project specifications and maintaining accurate records is commendable.



John McDowell
Utility Coordinator | Gresham Smith

John has 34 years of experience focused on utility design, OSP construction/inspection and network management/maintenance. He has served as both an Operations and Engineering Manager within Kentucky for both wireless and wireline telecommunications providers. John's responsibilities include network planning, fiber and copper design, make-ready engineering, utility coordination, OSP construction cost/timeline estimation, OSP construction management, construction inspection and disaster recovery. He is certified in KYTC Utility Coordination and is actively pursuing numerous other certifications as shown on page 3.

John's relevant experience includes, but is not limited to, utility coordination on Brent Spence Bridge where is providing design services to individual utilities as well as relocation management for the state agencies; US 68 Widening where he is working with Hopkinsville Water and Sewer, Hopkinsville Electric and AT&T to ensure all impacted utilities are either moved into the new right of way or that the appropriate design adjustments are made, or construction safeguards are put in place to allow the facility to maintain their location; and Liberty Road Widening where he worked with Columbia Gas, Kentucky American Water, Windstream, City of Lexington, Crown Castle, Louisville Gas and Electric/Kentucky Utilities, Metronet, and TC Energy to create the Utility Conflict Table and compile their easement needs.



Zeb Bame
Intern | True Inspections

Zeb is an inspection intern studying civil engineering at the University of Cincinnati. He is a member of the American Society of Civil Engineers (ASCE) and previously studied pre-engineering at Northern Kentucky University. His certifications include ACI Concrete Field-Testing Technician Grade 1; KY Grade and Drain Level I; KEPSC Inspector Qualification; NHI HMA Paving Field Inspection; NHI Aggregate Sampling Basics; Highway Structures I; and APNGA Portable Nuclear Gauge Safety and USDOT Hazmat Certification.

Zeb is supporting the inspection team for the KY 3076 (Mineola Pike) widening from two to four travel lanes to support freight and improve mobility between the Cincinnati/Northern Kentucky International Airport (CVG) and I-275. The project involves constructing a multi-use path along the improved roadway to connect to the CVG Loop Trail and provide multi-modal connections to transit stops. He is also serving as an intern on an \$18M project in Gallatin County reconstructing a 1.5-mile section of US 42 between the Markland Dam and Craigs Creek. Landslides on this segment of highway will be mitigated by the installation of a 2,895-foot-long permanent ground anchored tieback wall. Duties include daily ACI concrete testing and sampling, daily diaries, and materials tracking. KYTC's version of SiteManager is being used.



Willie Coleman
Utility Coordinator | Gresham Smith

Willie has 17 years of experience. He served TDOT for many years as the lead regional utility coordinator for the west region of the state. With TDOT, he managed utility coordination and relocations and managed the utility section and staff. Willie's experience includes utility coordination, utility relocation, cost estimation, project management and construction inspection. Since joining Gresham Smith as a Senior Utilities Coordinator, he has been involved in several active projects and helped facilitate a streamlined utility coordination process to keep projects advancing. He is certified in KYTC Utility Coordination; Grade and Drain Level I & II; ACI Level I; and IMSA Traffic Signal Tech. I. He is actively pursuing numerous other certifications as shown on page 4.

Willie's recent experience includes utility coordination for:

- KYTC Statewide Utility Coordination
- US 68, McCracken County, KY
- KYTC HSIP Statewide, KY
- Brent Spence Bridge Corridor
- US 68, Jefferson County, KY

→ DBE PARTICIPATION PLAN

To help Lexington achieve the 10% DBE goal established by FHWA, we are proud to be teamed with True Inspection Services, LLC (TIS) as our DBE partner for this contract.

True Inspection Services, LLC (TIS)

True Inspection Services, LLC (TIS) is a DBE, MBE, SBE, and EDGE-certified engineering and construction management firm specializing in construction and coating inspection services. Their firm was founded in 2007 on the principles of Truth, Integrity, and Stewardship.



TIS's project experience includes engineering services, overhead sign support inspection, inspection of asphalt and concrete roadways, bridge rehabilitation, airport runway inspection, and coating inspection services. They combine diverse talent with traditional experience to deliver an effective and successful team of engineers, construction managers, and inspectors their clients can depend on. They provide inspection services to both the public and private sectors, including various State Departments of Transportation, counties, municipalities, and retailers. Their team has over 60 inspectors, technicians, and engineers, providing a wealth of valuable knowledge and expertise to our projects.



In 2017, 2018, and 2019, True Inspection Services was recognized by Inc. 5000 as one of the fastest growing private companies in America. In 2021, True Inspection Services also received the Ohio Department of Transportation's DBE Consultant of the Year Award. This award recognizes an outstanding DBE consultant who developed a positive reputation in the industry for professionalism, integrity in work standards and performance; a commitment to business development; and upholds the spirit and principles of the DBE program.

Lochner DBE Development Goals and Expected Outcomes

1. Improving long-term DBE development.

Lochner will work with TIS to establish a well-rounded group of inspection staff who are well-versed in all aspects of KYTC projects. Lochner understands the importance of building strong relationships with qualified companies and has partnered with TIS on several contracts over the last 2.5 years. These partnerships will help improve our goal of mentoring DBE firms to the point that these firms can pursue projects on their own. TIS recently pursued the KY 8 Bridge Replacement project in Northern Kentucky and finished second in the consultant selection.

2. Increasing DBE abilities to handle different kinds of projects.

Lochner has an extensive portfolio of construction management and engineering services experience around the country and can assist TIS in effectively managing various project tasks.

3. Developing relationships in Kentucky.

While TIS has experience on various types of projects across other states, particularly Ohio, TIS will benefit from learning the intricacies of being deeply involved in procedures utilized with KYTC and Lexington-based projects, as well as specifications and standards. TIS will also be able to develop long-standing relationships with agency personnel.

Lochner has actively made efforts to identify veteran-owned firms to partner with in relevant CEI categories, but we have not received responses. We remain committed to continuing our search for opportunities to collaborate with veteran-owned firms.



KY 3076 (Mineola Pike) From Donaldson to I-275, KY 236 (Donaldson Road) From Mineola Pike to Houston Road

Mineola Pike is an important east-west arterial connecting I-275 with Donaldson Road. Donaldson Road serves as a critical connection between I-71/75 and CVG Airport. Both roads provide local businesses access to the freeway system by being part of the system that connects I-275 and I-75. The area has developed rapidly, demand for further capacity has risen, thus creating the need for additional capacity. Currently, Mineola and Donaldson are just two-lane facilities. These projects widen Mineola and Donaldson to four-lane facilities with a two-way left turn lane (TWLTL) and right turn lanes at major intersections, and in some cases, dual left turn lanes. These routes traverse somewhat rolling terrain, and are constrained at the far west end by CVG.

Lochner was awarded Mineola as a part of the region 3 on-call contract, and Donaldson as a stand-alone CEI contract. Lochner is responsible for contract administration, construction oversight, construction inspection, material sampling, and quality assurance and testing which include project a resident engineer, office administration, work zone safety coordination, and project finalization. Lochner also conducts bi-weekly utility coordination meetings with all of the utility owners as well as quarterly coordination meetings with the various contractors as the contractors are different for the two projects. Work items included grade and drain including both embankment and excavation, lime stabilization, asphalt pavements, drainage blankets, lime stabilization, three ready-stack retaining walls, erosion control, utility relocation inspection, striping and pavement markings, guard rail, traffic signals, and fencing.

"Lochner is currently the CEI consultant on the KY 236 Donaldson Road Widening project in Boone County, in addition to providing project inspection services on various other projects through the District On-Call contract, and has been a great full service company to work with. The staff is very experienced and knowledgeable in all facets of KYTC roadway construction projects from the design phases through construction implementation and project inspection and finishing with project completion and final closeouts that result in a final product that all parties can be proud to have been a part of." – Anthony Griggs, PE | KYTC District 6, Burlington Section

LOCATION

Boone County, KY

CLIENT

Kentucky Transportation Cabinet
Anthony Griggs, PE
anthony.griggs@ky.gov
859.322.0523

SERVICE DATES

Current

ROLE

Prime

CONSTRUCTION AMOUNT

Mineola: \$11,000,000
Donaldson: \$34,000,000

KEY TEAM MEMBERS & ROLE

Kevin Rust, PE, LSIT (Resident Eng.)
TJ Gilpin, PE (Principal-in-Charge)
John Hieronymus, PE (Roadway Eng.)
Jarod Burt (Drone Services)
Matt Gee (Inspector)
Dylan Cobb (Inspector)
Adam Fulton (TIS Inspector)





US 60 Widening and Reconstruction

US 60 connects I-64 with the City of Ashland. The current two-lane facility has been long plagued with heavy congestion and geometric problems that contributed to safety issues. This transformational project will improve safety and reduce congestion along this four mile stretch. Lochner has been asked to provide multiple inspectors to upgrade US 60 west of Cannonsburg.

Lochner is overseeing curve realignments to address geometric deficiencies, which includes a large volume of earthwork, multiple bridge replacements, culverts, and connections to side roads, dealing with a railroad that is in the middle of the project, and moving utilities. The project includes grade and drain services, structures, traffic signals, guardrail, and asphalt pavements. Lochner is also performing the materials sampling and testing for this project. Woody Britt is serving as the lead inspector and is responsible for making sure that all of the inspectors are performing the appropriate inspections and documenting the work and all of the material components. Lochner's inspectors are also monitoring off-site activities since this is such a large project and the staging areas take up a lot of room, as well as the waste sites since there is a large volume of earthwork.



"We currently have two Inspectors (Level 3) assisting us on a major grade and drain widening project in Boyd County. [The] employees of [Lochner] have been very professional with an excellent performance level on their assigned work duties."

– Chris Tuel | KYTC District 9, Ashland Field Office

LOCATION

Boyd County, KY

CLIENT

Kentucky Transportation Cabinet
Chris Tuel
chris.tuel@ky.gov
606.585.4510

SERVICE DATES

Fall 2024 (Scheduled Completion)

ROLE

Prime

CONSTRUCTION AMOUNT

\$45,000,000

KEY TEAM MEMBERS & ROLE

Kevin Rust, PE, LSIT (QA/QC)
Woody Britt (Lead Inspector)
Vic Holder (Senior Inspector)
Greg Vice (Materials Sampling & Testing)

Key Features

- Rolling Terrain
- Outside Influence (Railroad under US 60)
- Utilities
- Environmental Constraints
- Fast Growing Area for Development
- Asphalt Pavement
- Stabilization



KY 842 (Houston Road) Grade and Drain

Houston Road is an important East-West arterial that is being impacted by a major road reconstruction project on the intersecting Donaldson Road. This section of Houston Road crosses Dry Creek with a large box culvert. Rapid development in the area has put a strain on roadways requiring an increase in capacity. As a result, the drainage capacity of the ditches and storm pipes feeding into Dry Creek via Houston Road are set to become undersized for the expected flow from the new Donaldson Road Construction.

As part of the Region 3 on-call CEI contract, Lochner was tasked with aiding with contract administration, construction oversight, construction inspection, material sampling, work zone traffic control, and quality assurance and testing. The work items consisted of grade and drain oversight including both earth work, drainage pipe and drop-box installation, asphalt pavements and drainage blankets, erosion control, utility relocation inspection, striping and pavement markings, guard rail, and extension of a large double barrel box culvert.

A unique aspect of this project is coordination with other adjoining ongoing projects (Donaldson Road). Lochner is the stand alone CEI contractor for Donaldson Road, which has allowed us to guide and lead collaboration between KYTC, both contractors, and utility companies of each project to ensure the designs and construction do not interfere with each other.

LOCATION

Kenton County, KY

CLIENT

Kentucky Transportation Cabinet
Tyler Johnson, PE
tyler.johnson@ky.gov
859.307.1544

SERVICE DATES

Fall 2024

ROLE

Prime

CONSTRUCTION AMOUNT

\$3,000,000

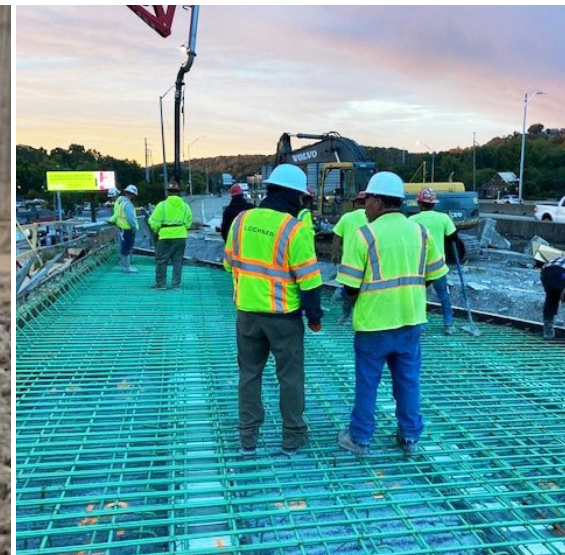
KEY TEAM MEMBERS & ROLE

Kevin Rust, PE, LSIT (Project Manager)
Larry Price (Inspector)
Ben Mehaffy (TIS Inspector)
Zeb Bame (TIS Inspector)



Key Features

- Utility Relocations/Coordination
- Multiple Project Contractor Coordination
- Grade and Drain
- Box Culvert
- Paving



I-71/I-75 Texas Turnaround

Lochner was asked to provide a resident engineer and inspectors to handle all aspects of this project. Kevin Rust, PE, and his team reviewed submittals, inspected traffic control, completed DWR's and pay estimates, obtained material samples and certifications, and completed the materials sampling checklist to ensure that all records were kept current. Kevin and Steve Dempsey also wrote the change orders for this project and obtained all of the backup information from the contractor for all submittals to ensure timely reviews on submittals. Larry Price served as the lead inspector for this project and recorded all activities that occurred on the project as well as documented project changes.

Lochner inspected the typical activities that occur on many KYTC projects such as bridge construction, retaining wall construction, concrete and asphalt pavements, driven and drilled soldier piles, guardrail installation, traffic and pedestrian signals, panel signs, subgrade construction, and striping. Also with this project, a few items not seen as much, such as EPS geofoam fills, and soil nail walls were inspected. Jason Braun was key in the inspection of the soil nail installation as he worked as a Foreman for GSI for three years and knew intimately what to watch for. Soil nails are frequently used in maintenance projects and Jason spent 27 years with KYTC D-6 Boone County Maintenance.



LOCATION

Kenton County, KY

CLIENT

Kentucky Transportation Cabinet
Tyler Johnson, PE
tyler.johnson@ky.gov
859.307.1544

SERVICE DATES

2021 - 2023

ROLE

Prime

KEY TEAM MEMBERS & ROLE

Kevin Rust, PE, LSIT (Resident Engineer)
Larry Price (Senior Inspector)
Jason Braun (Mid-Level Inspector)
Steve Dempsey (Contract Admin.)
Bob Hill (Work Zone Coordinator)

Key Features

- Asphalt Pavement
- Grade and Drain
- Heavy Traffic
- Multiple Traffic Phases
- Cement stabilization under HMA



I-71/75 Sound Wall Along Crescent Avenue

This sound wall installation is located along I-71/75 in Covington, Kentucky. Traffic noise from the interstate is a constant problem for the residents' that live around the busy I-71/75 interstate. To meet increasing traffic demands, the Brent Spence Corridor and Companion Bridge are set to begin construction in 2025. This construction is expected to alleviate congestion in the area; however, this means the expected traffic numbers are going to increase; therefore, increasing noise.

As part of the Region 3 On-Call CEI contract, Lochner was tasked with inspecting the installation of 1,000 LF of sound barrier wall. Lochner was tasked with inspecting site preparation, drilling and pouring of foundations, installation of steel supports, and installation of the barrier wall.

This project serves as a test of a transparent sound wall to gather feedback from surrounding communities. It's part of the upcoming Brent Spence Corridor and Companion Bridge Project, aiming to reduce traffic noise while preserving skyline visibility for residents.



Clay Wade Bailey Bridge Maintenance

The Clay Wade Bailey Bridge carries US 42 and US 127 across the Ohio River. It serves as a major connector between Covington, KY and Cincinnati, Ohio. Due to its proximity to the Brent Spence Bridge, it also serves many locals as an alternate route to cross the Ohio River when traffic is delayed on I71/75 and the Brent Spence. Within the next year, construction is set to begin on the Brent Spence Corridor Companion Bridge and alternate routes in the area are expected to become strained. KYTC is preparing for the increase in demand by ensuring maintenance is caught up on all Ohio River crossing routes.

As part of the Region 3 on-call CEI contract, Lochner was tasked with inspecting the various maintenance items being done on the bridge. Items included post tensioning of a pier, elimination of expansion joints, replacement of modular joints, maintenance of expansion joints, steel repair on girders, steel repair on floor beams, drainage repairs, and preventative maintenance. Some unique utility coordination was also required as the bridge shares its piers with a CSX Railroad Bridge as well as coordination with US Coast Guard do to work being performed over the Ohio River (which is an in-land shipping route).

The highlight of this project was the post tensioning of Pier 9 in the Ohio River. The existing pier poured in 1974 was drilled, retrofitted with tension bars and steel plates, tensioned and then capped with concrete.

LOCATION

Kenton County, KY

CLIENT

Kentucky Transportation Cabinet
Tyler Johnson, PE
tyler.johnson@ky.gov
859.307.1544

SERVICE DATES

2023 - Current

ROLE

Prime

KEY TEAM MEMBERS & ROLE

Kevin Rust, PE, LSIT (Project Manager)
Bobby Ulery (Lead Inspector)
Bob Hill (Work Zone Coordinator)
Steve Dempsey (Contract Admin.)
Ben Mehaffy (TIS Inspector)

LOCATION

Kenton, KY

CLIENT

Kentucky Transportation Cabinet
Tyler Johnson, PE
tyler.johnson@ky.gov
859.307.1544

SERVICE DATES

2024 - Current

ROLE

Prime

KEY TEAM MEMBERS & ROLE

Kevin Rust, PE, LSIT (Project Manager)
Colton Pugh, PE (Resident Engineer)
Bob Hill (Work Zone Coordinator)
Steve Dempsey (Contract Admin.)



KYTC On-Call CEI Services

Construction Engineering and Inspection is a core service area for Lochner in Kentucky and throughout the nation. Since 2004, Lochner has provided CEI services to KYTC and has been a valuable partner on many projects, including projects in District 7 (2004-2006, 2022) District 8 (2004-2006), Districts 6 and 9 (2007-Present), District 10 (2023) and District 12 (2023-Present).

Throughout the life of these projects, we have provided the requested number of engineers and inspectors who are experienced and maintain the required certifications. Our engineers and inspectors have experience working on a wide range of highway and bridge construction projects in Kentucky and are all trained in the use of KYTC's SiteManager software.

Lochner has also provided CEI services beyond the normal day-to-day construction project inspections such as maintenance estimates, traffic control reviews, final inspections, project closeouts, and drone flight imagery.

Below are just a few of the many recent projects that KYTC requested inspection services from the Lochner Team:

US 460 New Alignment | Pike County, KY | 2024

Multiple phases to construct US 460 as a modern four-lane facility between Pikeville and the Virginia state line are currently under construction. Lochner has provided inspection services on a range of activities including bridge construction, grade and drain activities, and paving.

East Kentucky Emergency Bridge Replacement Projects | Knott, Perry, and Pike Counties, KY | 2023-2024

Lochner has provided inspection services on several bridge replacement projects resulting from the 2022 East Kentucky flooding.

KY 680 New Alignment | Floyd County, KY | 2023

Lochner provided pavement inspection on this new route connecting US 23 to KY 80 in Floyd County.

KY 2557 Justell Bridge Repairs | Floyd County, KY | 2023

Lochner provided inspection services for repairs to a one-lane truss bridge spanning the Big Sandy River.

KY 377 HSIP Improvements | Rowan County, KY | 2023-2024

Lochner is providing inspection services for this highway safety improvement project that includes paving, guardrail, ditching and shouldering, culvert and pipe extensions, safety box inlets, traffic signs, and railroad rail retaining walls.

US 42 Landslide Correction and Reconstruction | Gallatin County, KY | 2023-2024

This project corrected major slope failures, reconstruction US 42, and installed a soldier beam tiedback retaining wall. Lochner was responsible for the subgrade construction inspection services and assisting in the administration and monitoring of the contract. Construction activities including monitoring soldier beam installation, tieback installation, reviewing soldier beam and tieback logs, grade and drain, asphalt paving, pipe and box culvert installation, underdrains, cement stabilization, guardrail installation, striping, and erosion control among other items.

LOCATION

Statewide, KY

CLIENT

Kentucky Transportation Cabinet
Brandon Seiter, Cory Wilson, Nick Reis,
Craig Moore, Brian Donnelly, Terry
Ishmael, Joe Callahan, and David Leach

SERVICE DATES

2004-Current

ROLE

Prime

KEY TEAM MEMBERS & ROLE

Kevin Rust, PE, LSIT (Project Manager)
Colton Pugh, PE (Resident Engineer)
Bobby Ulery (Lead Inspector)
TJ Gilpin, PE (Inspector)
Darold Slone, PE (Inspector)
Matt Gee (Inspector)
Kelly Ulery (Inspector)
Dalton Castle (Inspector)
Ben Mehaffy (TIS Inspector)
Zeb Bame (TIS Inspector)

“

The Kentucky Transportation Cabinet has worked with Lochner Inc. on a tied back retaining wall project along US 42 in Gallatin County.

Lochner has provided personnel to conduct contract inspection during the project. Some of the services included soldier beam installation monitoring, material sampling (concrete and soil testing) and daily project reporting. Lochner, Inc. has provided valuable inspection and monitoring throughout the entire project.

Their staff is always knowledgeable of the current status of project operations and they have always been available and willing to update the cabinet on any issues or questions on the project.”

– Aaron Wallace, PE | KYTC,
Geotechnical Branch

CLIENT REFERENCES

Client/Owner Reference	Project Name
Tyler Johnson, PE KYTC 859.307.1544 tyler.johnson@ky.gov	<ul style="list-style-type: none"> • Clay Wade Bailey Bridge Maintenance • I-71/75 Sound Wall Along Crescent Ave. • I-71/I-75 Texas Turnaround • KY 842 (Houston Road) Grade & Drain
Chris Tuel KYTC 606.585.4510 chris.tuel@ky.gov	<ul style="list-style-type: none"> • US 60 Widening and Reconstruction
Anthony Griggs KYTC 859.322.0523 anthony.griggs@ky.gov	<ul style="list-style-type: none"> • KY 3076 (Mineola Pike) From Donaldson to I-275, KY 236 (Donaldson Road) From Mineola Pike to Houston Road
Kyle Bidwell KYTC 859.230.8238 kyle.bidwell@ky.gov	<ul style="list-style-type: none"> • KYTC On-Call Services (various projects)
Paxton Weddington, PE KYTC 606.433.7791 paxton.weddington@ky.gov	<ul style="list-style-type: none"> • Chestnut Ridge Road
Darren Stamper KYTC 606.666.8841 darren.stamper@ky.gov	<ul style="list-style-type: none"> • KYTC On-Call Services (various projects)



RIGHT-OF-WAY

TEAM ORGANIZATION

As program manager, Derrick Young, SR/WA, will be the primary point-of-contact for Lexington-Fayette Urban County Government (LFUCG). His contact information is: (P: 859.224.4476 | C: 502.545.1167 | dyoung@hwlochner.com)

Derrick leads a team of **full-time, in-house negotiators, relocation specialists, and property managers** who will be at LFUCG's disposal. We choose to use in-house ROW staff instead of subcontracting these services to vendors because it **streamlines communication, bringing scheduling expedition benefits** to our clients. Specifically, our in-house staff are able to prioritize project work as needed so deadlines are met, schedules are maintained, and projects stay within budget.

For added value and greater efficiency, our in-house agents are cross-trained in acquisition and relocation, giving them the expertise to answer any questions from property owners and keep projects moving forward.

LFUCG
PROGRAM MANAGER
Derrick Young, SR/WA

PROJECT MANAGERS		
Derrick Young, SR/WA	Jennifer Golson, SR/WA	Larry Graves
ROW SPECIALISTS		
ACQUISITION AGENTS Kimberly Davis, SR/WA Wade Abbott, SET, SR/WA Lori Hogg Drew Mackell	ACQUISITION/RELOCATION TRAINEES Kari Stockdale Calvin Andries	
RELOCATIONS AGENTS Jennifer Golson, SR/WA Kimberly Davis, SR/WA Larry Graves Lori Hogg Drew Mackell	ENGINEERING STAFF John Hieronymus Josh Brewer Claire Mackey Jarod Burt Akin Asaolu Seth Atkins	
SUBCONSULTANTS		
Legacy Title Company Titles & Closings (WBE) Chapman and Associates Appraisals Thoroughbred Real Estate Services Appraisals Freeman Appraisal Service Appraisal Review		

Locality

Our Lexington office is conveniently located less than four miles from the LFUCG office. This close proximity allows us to respond quickly to any request, including meeting in person with LFUCG staff or visiting a project site.



TEAM QUALIFICATIONS

Lochner's large in-house team of ROW professionals are highly qualified as shown below. Additionally, many are cross-trained in acquisitions and relocations, giving our team unmatched versatility. **Lochner is prequalified in Relocation and Acquisitions.**

KYTC Prequalifications

ROW Staff	Project Manager	Buyer				Relocation			
		Level III	Level II	Level I	Trainee	Level III	Level II	Level I	Trainee
Derrick Young, SR/WA	✓	✓				✓			
Jennifer Golson, SR/WA	✓	✓				✓			
Larry Graves	✓	✓					✓		
Wade Abbott, SET, SR/WA			✓						✓
Calvin Andries					✓				✓
Drew Mackell			✓					✓	
Lori Hogg		✓						✓	
Kimberly Davis, SR/WA		✓				✓			
Kari Stockdale					✓				✓



“

Concerning our recent project, US 460, in Bourbon County, KY, Lochner performed their Right of Way duties above and beyond expectation. The project was on a VERY tight federal deadline and the team met the hard deadline as asked. Given all the challenges presented, the Lochner ROW team exceeded expectations. I would not hesitate to hire them for even the largest and complex of projects in the future.

- Cecil Smith, ROW Supervisor, KYTC District 7



PROJECT APPROACH

Successful completion of right of way (ROW) acquisition and relocation is often the final step before letting a transportation project for construction.

With a history of providing ROW services within Kentucky for over 10 years, Lochner has an established relationship with LFUCG. Our relevant experience includes the delivery of 2 LFUCG projects, 12 projects under our current Louisville Metro contract, and several projects within Boone County and Kenton County public agencies. ***Our in-house ROW team is one of the largest in the state and is staffed with cross-trained agents skilled in both acquisition and relocation. Our size and versatility means we can deliver multiple assignments at once.***

ROW acquisition and relocation follow a legally prescribed step-by-step process. The successful delivery of your program requires regular and consistent communication and accurate record-keeping. To support informed decision-making, we meet regularly with clients to communicate and collaborate on issues and provide up-to-date status reports on each parcel.

Our knowledge and experience pay off when we meet with property owners as LFUCG representatives. We value and treat each person with respect, listen to their concerns, and provide honest answers to their questions. We show respect by being flexible when scheduling meeting locations and times, by being available and responsive, and by clearly communicating LFUCG's ROW and project development process. Our goal is to reach a timely settlement within our authority and recognize when it is appropriate to elevate the decision or move to the process's next step.

With Lochner's team, you will have a legally defensible record of contacts (ROC) and decisions on each parcel because we carefully document each process step. Each submittal is checked through our quality control/quality assurance (QC/QA) process to ensure completeness and accuracy. Moreover, we are committed to tying up every loose end until each project is completed successfully.

Understanding Regulations & Federal-Aid Projects

Over half of Lochner's proposed team have been employed by KYTC or other Departments of Transportation. As dedicated and seasoned ROW staff, our proposed professionals know and understand all applicable regulations and guidelines, including Real Estate, the Uniform Act, FHWA rules, KYTC Policies & Procedures, and LFUCG Standards. We have successfully applied this knowledge across projects, which is demonstrated throughout this statement of qualifications.

Lochner has specific experience managing federal aid projects for LFUCG on the Town Branch Commons Corridor project. Our team assisted the city with developing RFQs, managing contracts for design elements, overseeing federal funding, and developing a TIGER grant application. The project was successful in winning a \$14M TIGER grant in 2016.

We value continuing education through participation in IRWA, Federal Highway Administration (FHWA), and KYTC conferences and workshops to maintain practice knowledge for our staff. Our senior staff are recognized experts who often present in ROW tracks at transportation conferences, and these industry leaders regularly provide mentorship for junior staff.

Project Leadership



Derrick Young, SR/WA | ROW Program Manager/Project Manager

Derrick is Lochner's proposed program manager, bringing over 16 years of ROW experience. He is KYTC prequalified as a ROW PM, Buyer Level III, and Relocation Agent Level III. Derrick began his career in KYTC's District 7 as an acquisition agent and moved to Central Office where he assisted the Acquisition Branch Manager. He has performed project management duties, complex business and residential negotiations, acquisitions, and relocations on various KYTC, West Virginia Division of Highways (WVDOT), Louisville Metro, and other local public agency (LPA) projects. Derrick achieved the International ROW Association's (IRWA) SR/WA designation, the highest designation possible within the professional organization. As ROW Manager, he shows initiative and drive to keep projects on time, on budget, and on track through the execution of weekly, if not daily, discussions with the client and through monthly status review meetings. Derrick's expertise yields productive discussions about parcel issues with in-house staff. He knows when to escalate things immediately, so the client PM is fully aware of important issues while providing suggestions for effective resolutions.



Jennifer Golson, SR/WA | Project Manager

Jennifer joined Lochner in 2015 after dedicating over twenty years to KYTC ROW in District 7 and Central Office as the assistant to the Relocation Branch Manager. She is KYTC prequalified as a ROW PM, Buyer Level III, and Relocation Agent Level III. She has recently managed several KYTC projects in Breathitt, Bourbon, Montgomery, Green, Metcalfe, and Warren Counties, including the oversight of several relocations. Her vast business and residential relocation experience makes her invaluable and facilitates Jennifer's thorough QC review of relocation submittals. Her review of these packets before submission ensures high-quality deliverables are provided to our clients.



Larry Graves | Project Manager

Since joining Lochner after retiring from KYTC, Larry has managed several LPA projects, including the recent 18-parcel Dublin Drive Sidewalk project in Boone County. He has also served Louisville Metro under Lochner's current ROW contract through parcel acquisition for the St. Anthony Church Road and Wolf Pen Branch Sidewalk projects. He brings extensive complex acquisition experience, making him a great leader to our ROW staff when trying to resolve difficult negotiation situations. With Larry's kind demeanor, he has become a favorite with many property owners and client PMs, as he not only gets things done in a timely fashion but also with a smile.

Management & Communication

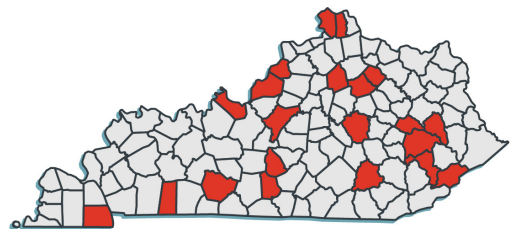
Under this contract, Lochner will be responsible for day-to-day activities similar to an LFUCG in-house PM. We will use regular status meetings to inform LFUCG about day-to-day activities for each parcel. ***We will leverage our established working history with LFUCG to differentiate between routine challenges and larger issues*** requiring immediate communication with the LFUCG PM to safeguard against surprises. This approach allows LFUCG staff to do their job without unnecessary interruptions while still remaining informed of project progress.

When you assign work to Lochner, we assess the individual project and strategically assemble the team based on key staff experiences. We prepare a project report and identify priority parcels as well as develop efficient scopes with realistic schedules and budgets. These are based on an understanding of the number and complexity of parcels, and Lochner's specific tasks assignments, developed through discussions with the LFUCG PM. We work closely with these PMs to understand and negotiate the project scope and fee and to communicate progress and issues during the life of each assignment.

As the project progresses, we initiate the appraisal process, develop a range of values, complete minor acquisition review (MAR) valuations, initiate relocation interviews, and complete the Acquisition Stage Relocation Report (ASRR). Along with our teaming partners, we deliver quality documents and critically review every deliverable, whether initiated in our office or developed by one of our subs.

During the project, attention to detail and communication best suited to LFUCG staff is a focus of Lochner's project management. Timely status report submittals and monthly status meetings with the LFUCG PM are opportunities for Lochner and LFUCG to communicate progress and discuss issues that may have arisen. As part of our regular status report submittal, Lochner provides additional information, including special issues with outstanding parcels, and we note when properties have been vacated to ensure LFUCG staff know when property management tasks need to begin.

Lochner's Recent ROW Work Through Statewide & Standalone Projects



Effective Organization & Coordination

Our team is widely experienced and understands the unique needs associated with various parcels. Certain business and special-use properties require an increased level of attention. For example, large companies or heirships with out-of-town ownership present specific challenges. Often, these parcels require numerous phone calls, emails, and letters to various people involved before finding the individual needed for negotiations. These parcels may also require approval from a board of directors who only meet intermittently. **Lochner staff are aggressively determined to find the decision-makers and keep the process moving.** Lochner's ROW Specialist Lori Hogg recently completed a negotiation and closing for a large corporation in Boone County, KY, whose owner was in South Africa. Lori worked with the property owners' son to communicate with the owners and obtain signed documents in a timely manner. Lori also worked with the closing attorneys to ensure parcel closure, meeting the original scheduled ROW clearance date.

Churches are another property type that can have unique complications during negotiations. Maintaining trust between the agent and the congregation is critical to completing these negotiations. Lochner staff have attended and made presentations to numerous congregations to explain plans, appraisals, and offers. We have dealt successfully with churches over the years, both for KYTC and LPA projects. In more than one instance, we have acquired property from churches using existing ROW for member parking, unaware they do not own the land and that it also constitutes an encroachment. Our agents are experienced in communicating with property owners during these situations to provide information and explain the plans so owners understand how they will be able to use their property after construction is completed. For example, on the Clays Mill Road project, our agents have developed solutions that allow a church to reconstruct member parking in another location and avoid condemnation that would delay the schedule.

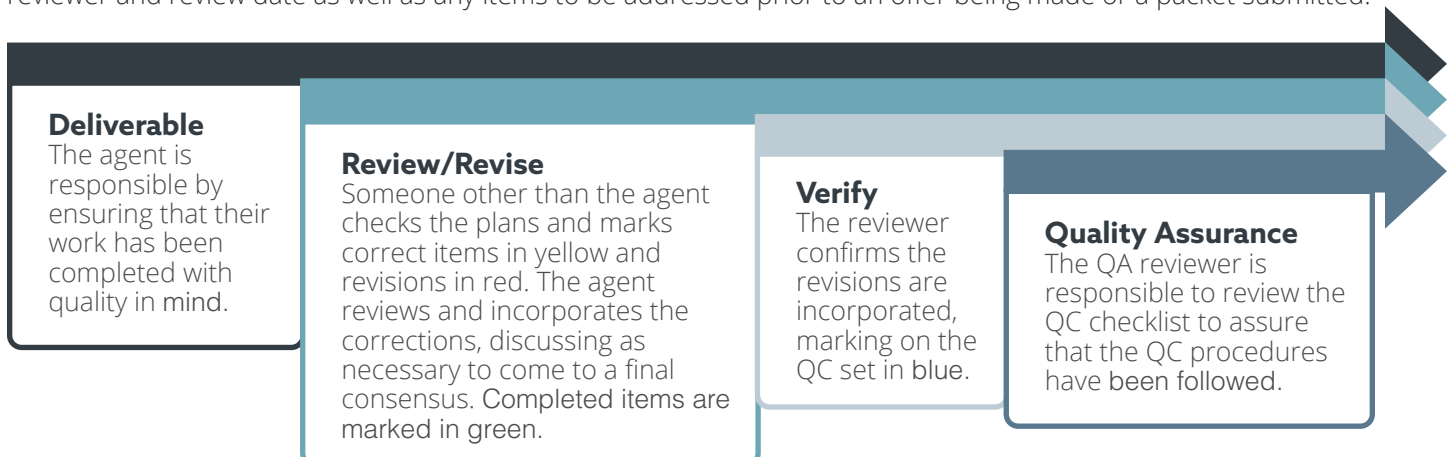
Quality of Work

Detailed, concise, and accurate ROCs are a critical piece of our project management. **Lochner staff understands ROCs provide LFUCG legal documentation of ROW negotiations.** When construction issues arise, ROCs are LFUCG's main means of understanding the issues and resolutions that were identified and agreed upon with all stakeholders. ROCs are critical should a parcel end up in condemnation proceedings. Knowing ROCs are legal documents, Lochner agents pride themselves on keeping good notes and transferring the meeting account accurately and in a timely manner.

Lochner's other QC/QA methods include an independent review of all acquisition, relocation, and condemnation packet contents (see Figure below). Lochner implements this stringent internal QC/QA process for all submittals. No document with a property owner's signature is presented until another experienced staff member other than the preparer has checked and signed off on the documents. Lochner PMs include QC/QA forms in the parcel folder to indicate the reviewer and review date as well as any items to be addressed prior to an offer being made or a packet submitted.

Why Lochner?

- Lochner personnel have **successfully completed numerous ROW projects and performed negotiation and relocation services for well over 1,000 tracts** in the past few years for clients such as LFUCG, KYTC, WVDOH, various local municipalities, airports, CSX Railroad, and a host of other engineering firms.
- Lochner provides **nine local in-house agents** in addition to ROW staff across the firm, offering the option to work share and pull resources.
- Lochner maintains **ample local capacity, availability, and expertise to manage projects of any size or complexity.**
- Lochner's **proven project delivery process** demonstrates how we deliver efficient projects on time and within budget while complying with KYTC's ROW Manual, the Uniform Relocation Assistance, and Real Properties Acquisition Policies.




FIRM

Lochner

CERTIFICATION

IRWA SR/WA

EXPERTISE

- Project Management
- Acquisitions
- Relocations
- QA/QC Reviews
- LPA Management

Derrick Young, SR/WA

Program Manager | 16 Years of Experience

Derrick is an industry-leading project manager and professional with experience managing the acquisition of hundreds of parcels for Kentucky, West Virginia, and numerous LPAs. Derrick's team of agents and buyers is among the largest ROW groups in Kentucky, Tennessee, and West Virginia. Prior to joining Lochner, Derrick served as Kentucky's Central Office Acquisition Branch Program Specialist with KYTC, where his duties included applying his broad knowledge of ROW procedures to improve the quality of acquisitions throughout the state. Derrick's leadership brings fresh energy and focus to our ROW team.

Relevant Experience

Town Branch Trail | LFUCG | Fayette County, KY

Deputy Project Manager/Lead ROW Specialist. ROW services for 19 parcels including the acquisition and relocation for 8 businesses, 2 billboards, and 5 miscellaneous for 1.5 miles of multi-use path along Manchester Street into downtown Lexington.

Clay Mill Road - Section 1 | LFUCG | Fayette County, KY

ROW Specialist. ROW acquisition services for 66 parcels for a 1.9 mile urban arterial roadway widening project.

ROW Contract | Louisville Metro Government | Jefferson County, KY

Project Manager. On-going contract with the Louisville Metro providing miscellaneous ROW services, including twelve projects requiring 32 parcel acquisitions to date. In addition to overseeing contract execution, Derrick's involvement includes acquisitions for the Cannons Lane Sidewalk, Tucker Station Road, Manslick Road, and Brentlinger Lane projects.

KY 79 ROW Services | KYTC | Meade County, KY

Project Manager. ROW acquisition services, including project management, negotiations, relocations, MARs, BAV appraisals, oversight of title transfers and closings for a 4.2-mile roadway reconstruction. Project includes 107 parcels, 12 residential relocations, 12 miscellaneous moves, and two sign relocations. Seventy MARs and 37 BAV appraisals will be completed.

US 79 ROW Services | KYTC | Todd County, KY

Project Manager. ROW services including appraisals, negotiations, and closing for 34 parcels.

KY 1303/KY 536 ROW Services | KYTC | Kenton County, KY

Project Manager. ROW services including 75 parcels and 10 relocations to improve safety and provide congestion relief on KY 1303 from KY 536 to Beechgrove Elementary School.

KY 236/KY 3076 | KYTC | Boone County, KY

Project Manager. ROW services for Donaldson Road including 49 parcels with acquisition from Kenton County Airport Board, Diocese of Covington, several businesses and residential properties, two residential relocations, and two outdoor advertising relocations. Mineola Pike impacts 16 parcels of mainly complex acquisitions with large corporations, foreign entities, and Kenton County Airport Board.


FIRM

Lochner

CERTIFICATION

IRWA SR/WA

CERTIFICATION

- Project Management
- Acquisitions
- Relocations

Jennifer Golson, SR/WA

Project Manager | 27 Years of Experience

Jennifer has nearly three decades of ROW experience. Prior to joining Lochner, Jennifer served as the ROW Unit Leader for KYTC District 7. In 2013, she became a ROW Program Specialist in the Relocation Branch at KYTC's Central Office. She was responsible for the review and approval of all relocation packets for 9 of KYTC's 12 Districts across the state. Additionally, Jennifer assisted the Relocation Branch Manager to develop and facilitate training seminars for relocation agents and consultants. Jennifer's interpersonal communication skills, responsiveness, relocation expertise, and a thorough knowledge of ROW processes make her a recognized leader in the field.

Relevant Experience

Town Branch Trail | LFUCG | Fayette County, KY

Lead Relocation Specialist. ROW services for 19 parcels including the acquisition and relocation for 8 businesses, 2 billboards, and 5 miscellaneous for 1.5 miles of multi-use path along Manchester Street into downtown Lexington.

Clay Mill Road - Section 1 | LFUCG | Fayette County, KY

ROW Specialist. ROW acquisition services for 66 parcels for a 1.9 mile urban arterial roadway widening project.

ROW Contract | Louisville Metro Govt. | Jefferson County, KY

ROW Specialist. On-going contract with the Louisville Metro providing miscellaneous ROW services, including twelve projects requiring 32 parcel acquisitions to date. Jennifer's involvement includes acquisitions for the Gelhaus Road and Ormsby Lane projects.


FIRM

Lochner

CERTIFICATION

Notary Public

CERTIFICATION

- Project Management
- Acquisitions
- Relocations

Larry Graves

Project Manager | 41 Years of Experience

Larry joined Lochner after retiring from KYTC. As a ROW specialist, Larry is experienced in business and residential relocations; minor acquisition review compilations; property management; training new employees; ROW documentation preparation and reviews; negotiations; review and approval of payment and condemnation packets; and organizing and leading project, property owner, and public meetings.

Relevant Experience

ROW Contract | Louisville Metro Govt. | Jefferson County, KY

ROW Specialist. On-going contract with the Louisville Metro providing miscellaneous ROW services, including twelve projects requiring 32 parcel acquisitions to date. Larry's involvement includes acquisitions for St. Anthony Church Road and Wolf Pen Branch Sidewalk.

Robbs Lane Sidewalk | Private Developer | Jefferson County, KY

Project Manager. ROW services for a proposed sidewalk requiring acquisition of nine construction and drainage easements on Robbs Lane, two easements on Gayaway Drive, and one easement on Shepherdsville Road.

Dublin Drive Sidewalk | Boone County Fiscal Court | Boone County, KY

Project Manager. Acquisition services for a pedestrian improvement project, including project management, negotiations, MARs, appraisals, and closings.

KY 79 ROW Services | KYTC | Meade County, KY

ROW Specialist. ROW acquisition services, including project management, negotiations, relocations, MARs, BAV appraisals, oversight of title transfers and closings for a 4.2-mile roadway reconstruction.


FIRM

Lochner

CERTIFICATION

KY Notary Public

CERTIFICATION

- Acquisitions
- Relocations
- Property Management

Drew Mackell

ROW Specialist | 6 Years of Experience

Drew spent three years with KYTC District 7 as a state ROW agent. While with the cabinet, Drew focused his skills on ROW acquisitions, relocations, and property management. Drew is experienced in complex negotiations, non-residential relocations, and improvement removal contracts. With Lochner, Drew has continued to excel in relocations and acquisitions while training and onboarding our growing staff.

Relevant Experience

ROW Contract | Louisville Metro Govt. | Jefferson County, KY

ROW Specialist. On-going contract with the Louisville Metro providing miscellaneous ROW services, including twelve projects requiring 32 parcel acquisitions to date. Drew's involvement includes acquisitions for the Stony Brook and McCawley Road Sidewalk projects.

US 460 Widening - Section 2 | KYTC | Scott County, KY

ROW Specialist. 7.8 mile widening project including 100 parcels that require 49 appraisals with 1 residential relocation, 1 business relocation, and 1 miscellaneous relocation. The project will impact several large horse farms.

US 60 | KYTC | Montgomery County, KY

ROW Specialist. 2.11 miles of widening which impacts 83 parcels. The parcels include a mixture of commercial, special use, and residential properties.

KY 79 ROW Services | KYTC | Meade County, KY

ROW Specialist. ROW acquisition services, including project management, negotiations, relocations, MARs, BAV appraisals, oversight of title transfers and closings for a 4.2-mile roadway reconstruction. Project includes 107 parcels, 12 residential relocations, 12 miscellaneous moves, and two sign relocations. Seventy MARs and 37 BAV appraisals will be completed.


FIRM

Lochner

CERTIFICATION

Notary Public

CERTIFICATION

- Acquisitions
- Relocations

Lori Hogg

ROW Specialist | 20 Years of Experience

Lori joined Lochner in 2021 after 14 years in the ROW field with KYTC District 10 Office. She began her career as a ROW Agent, then worked her way up to ROW Unit Leader. In her four years as ROW Unit Leader, Lori assisted in project management and supervised all acquisition tasks for each project. She also assisted in relocation services such as replacement housing computations and miscellaneous moves.

Relevant Experience

US 460 Widening - Section 2 | KYTC | Scott County, KY

ROW Specialist. 7.8 mile widening project including 100 parcels that require 49 appraisals with 1 residential relocation, 1 business relocation, and 1 miscellaneous relocation. The project will impact several large horse farms.

US 60 | KYTC | Montgomery County, KY

ROW Relocation Specialist. 2.11 miles of widening which impacts 83 parcels. The parcels include a mixture of commercial, special use, and residential properties.

KY 236/KY 3076 | KYTC | Boone County, KY

ROW Specialist. ROW services for Donaldson Road including 49 parcels with acquisition from Kenton County Airport Board, Diocese of Covington, several businesses and residential properties, two residential relocations, and two outdoor advertising relocations. Mineola Pike impacts 16 parcels of mainly complex acquisitions with large corporations, foreign entities, and Kenton County Airport Board.


FIRM

Lochner

CERTIFICATION

- IRWA SR/WA
- Certified Engineering Technician

CERTIFICATION

- Acquisitions
- Relocations

Wade Abbott, SET, SR/WA

ROW Specialist | 38 Years of Experience

Wade is a Senior ROW Agent (SR/WA) certified by the International ROW Association. He is responsible for meeting with property owners on ROW projects and making acquisition offers, obtaining and calculating MARs data, preparing documents such as contracts and Memoranda of Understanding, documenting property tax, and preparing condemnation packets. For two years, Wade served as Secretary for IRWA's Chapter 25 Board.

Relevant Experience

ROW Contract | Louisville Metro Govt. | Jefferson County, KY
ROW Specialist. On-going contract with the Louisville Metro providing miscellaneous ROW services, including twelve projects requiring 32 parcel acquisitions to date. Wade's involvement includes acquisitions for Stony Brook, Six Mile Lane Sidewalk, and Bearcamp Road.

Bridge Program Delivery ROW Services | KYTC | Statewide, KY
ROW Specialist. ROW services for a project including structural design, environmental, roadway, utility coordination, and ROW services for construction of 34 bridges within two years as a subconsultant.

KY 79 ROW Services | KYTC | Meade County, KY
ROW Specialist. ROW acquisition services, including project management, negotiations, relocations, MARs, BAV appraisals, oversight of title transfers and closings for a 4.2-mile roadway reconstruction.

KY 1303/KY 536 ROW Services | KYTC | Kenton County, KY
ROW Specialist. ROW services including 75 parcels and 10 relocations to improve safety and provide congestion relief on KY 1303 from KY 536 to Beechgrove Elementary School.

Calvin Andries

ROW Specialist | 3 Years of Experience

Calvin comes to Lochner with experience working for the Illinois Department of Transportation where he coordinated NEPA compliance on several highway projects throughout 16 counties. Calvin has knowledge in the highway process and understands how to read and explain roadway plans, which provide a critical foundation during the ROW negotiation process. He currently serves as Secretary and Environmental Committee Chair for IRWA's Chapter 25 Board.

Relevant Experience

Bridge Program Delivery ROW Services | KYTC | Statewide, KY
ROW Specialist. ROW services for a project including structural design, environmental, roadway, utility coordination, and ROW services for construction of 34 bridges within two years as a subconsultant.

KY 15 ROW Services | KYTC | Breathitt County, KY
ROW Specialist. ROW services for 23 parcels, including one residential relocation, three business relocations, two miscellaneous moves, and one outdoor advertising relocation to allow for the widening of KY 15 with turn lanes and a distance of 1.34 miles, consisting of curb and gutters and 6' sidewalks.

US 79 ROW Services | KYTC | Todd County, KY
ROW Specialist. Appraisals, negotiations, and closing for 34 parcels.

KY 1303/KY 536 ROW Services | KYTC | Kenton County, KY
ROW Specialist. ROW services including 75 parcels and 10 relocations to improve safety and provide congestion relief on KY 1303 from KY 536 to Beechgrove Elementary School.


FIRM

Lochner

CERTIFICATION

CPR/First Aid/AED

CERTIFICATION

- Acquisitions


FIRM

Lochner

CERTIFICATION

IRWA SR/WA

CERTIFICATION

- Acquisitions
- Relocations
- LPA Management

Kimberly Davis, SR/WA

ROW Specialist | 24 Years of Experience

After retiring from the Tennessee Department of Transportation (TDOT), Kimberly joined Lochner's ROW staff in 2021. Kimberly has negotiated many complex parcels in her career and has many years of experience in relocation services such as replacement housing computations and payments, business relocations, and miscellaneous moves. Kimberly also managed and assisted many local government projects to make sure they were in compliance with FHWA guidelines and the Uniform Act.

Relevant Experience

Bridge Program Delivery ROW Services | KYTC | Statewide, KY ROW Specialist. ROW services for a project including structural design, environmental, roadway, utility coordination, and ROW services for construction of 34 bridges within two years as a subconsultant.

US 79 ROW Services | KYTC | Todd County, KY ROW Specialist. Appraisals, negotiations, and closing for 34 parcels.

KY 1303/KY 536 ROW Services | KYTC | Kenton County, KY ROW Specialist. ROW services including 75 parcels and 10 relocations to improve safety and provide congestion relief on KY 1303 from KY 536 to Beechgrove Elementary School.

KY 242 & US 68 ROW Services | KYTC | Warren, Metcalfe, Green Counties, KY Project Manager. ROW services for three projects in District 3, one on KY 242 in Warren County and two on US 68 in Metcalfe and Green Counties, under a task-based contract. Scope includes project preparation, management, negotiations, acquisitions, relocations, appraisals, and closings.

Kari Stockdale

ROW Specialist | 2 Years of Experience

Throughout her career, Kari has been involved in planning, customer relations, and project management. This experience in customer service and project management has contributed to her seamless transition serving as a ROW specialist for Lochner. Leveraging her knowledge, she has quickly learned the ROW process and contributed heavily to the success of multiple negotiations during the acquisition process of various projects.

Relevant Experience

Bridge Program Delivery ROW Services | KYTC | Statewide, KY ROW Specialist. ROW services for a project including structural design, environmental, roadway, utility coordination, and ROW services for construction of 34 bridges within two years as a subconsultant.

US 460 Widening - Section 2 | KYTC | Scott County, KY ROW Specialist. 7.8 mile widening project including 100 parcels that require 49 appraisals with 1 residential relocation, 1 business relocation, and 1 miscellaneous relocation. The project will impact several large horse farms.

US 60 | KYTC | Montgomery County, KY ROW Specialist. 2.11 miles of widening which impacts 83 parcels. The parcels include a mixture of commercial, special use, and residential properties.

KY 79 ROW Services | KYTC | Meade County, KY ROW Specialist. ROW acquisition services, including project management, negotiations, relocations, MARs, BAV appraisals, oversight of title transfers and closings for a 4.2-mile roadway reconstruction. Project includes 107 parcels, 12 residential relocations, 12 miscellaneous moves, and two sign relocations. Seventy MARs and 37 BAV appraisals will be completed.


FIRM

Lochner

CERTIFICATION

CPR/First Aid/AED

CERTIFICATION

- Acquisitions
- Relocations Trainee

→ DBE PARTICIPATION PLAN

For this contract, Lochner is proud to partner with **Legacy Title Company, LLC**—a woman-owned business enterprise (WBE). This full-service title company, owned by licensed attorney Alissa Graf-Schad, is cost-conscious and results-oriented. Their licensed real estate attorneys, title lawyers, and closing agents offer mobile service, eliminating unnecessary hassle while providing prompt, accurate, and complete title, escrow, and closing services. The goal of our partnership on this contract is to deepen Legacy Title's relationship with Louisville Metro as well as encourage and support Legacy Title's identification and development of new competencies that provide long-term firm, client, and industry benefits.

Lochner is a strong supporter of Legacy Title and has developed a rapport with the firm's staff through the delivery of multiple ROW projects. **A recent example is Phase I of the Brentlinger Lane Connector project for Louisville Metro, which involved one acquisition and five partial acquisitions.** Other partnership examples include KYTC's US 79 in Todd County; KY 242 and US 68 in Warren, Metcalfe, and Green Counties; and KY 79 in Meade County (see Section 6 for more detail). Legacy Title's familiarity with Lochner, experience negotiating complex transactions, and local knowledge make them the right disadvantaged business enterprise (DBE) partner for this contract.

In addition to supporting Legacy Title and other DBE firms whenever possible, our firm recently joined public agencies and professional organizations throughout the U.S. as **a signatory of the Equity in Infrastructure Project (EIP) pledge**. This initiative is aimed at providing greater access to prime, joint venture, and equity contracting opportunities for historically underutilized businesses (HUBs). As a signatory, Lochner recognizes the importance of creating a more equitable playing field for underrepresented businesses to thrive and contribute to the nation's infrastructure development. In addition to signing the pledge, Lochner CEO and Board Chairman Terry Ruhl has joined the EIP Advisory Council, further aligning with Lochner's broader efforts to champion and invest in small and disadvantaged businesses within the infrastructure industry through mentor-protégé programs and other business partnerships. We look forward to continuing our DBE support through the successful delivery of this contract.

Lochner has actively sought to identify veteran-owned firms to partner with but has been unsuccessful in finding any prequalified in relevant ROW categories. We remain committed to continuing our search for opportunities to collaborate with veteran-owned firms.



Alissa Graf-Schad, Esq.
Title & Closing Specialist

FIRM

Legacy Title Company, LLC

YEARS OF EXPERIENCE

20

ORGANIZATIONS

- Kentucky Bar
- Indiana Bar
- American Land Title
- Indiana Land Title



Photo of Lochner CEO and Board Chairman Terry Ruhl with other signatories at the EIP signing ceremony, which took place on November, 23, 2023, at the Engineering News-Record Los Angeles Infrastructure Forum.



Town Branch Commons Corridor

The Town Branch Trail project is 1.5 miles of multi-use path in downtown Lexington, KY that winds through the Distillery District and leads to Rupp Arena with an intersection improvement at Manchester Road and Forbes Road. The project included 19 parcels requiring acquisition with 8 business relocations, 2 billboard relocations, and 5 miscellaneous relocations.

The project area is heavily commercial and industrial and located in the historic Distillery District. The area is quickly developing with new restaurants, breweries, and bars located in former industrial buildings.

Lochner provided project management, appraisal services, relocation services and acquisition services for the Town Branch Trail project.

The high profile of the project, past contentious public involvement, and the project location made negotiations challenging. Lochner personnel worked side-by-side with LFUCG to resolve property owner issues and concerns, allowing agreements to be reached in most every case to date to receive a right-of-entry agreement or avoid condemnation to meet the Federally Grant funded project schedule.

LOCATION

Fayette County, KY

FIRM ROLE

Prime

CLIENT

LFUCG

KEY TEAM MEMBERS & ROLE

Phil Logsdon, AICP (PM)
Derrick Young, SR/WA (Acquisition)
Jennifer Golson, SR/WA (Relocation)
Chapman and Associates (Sub)
Freeman Appraisal Service (Sub)

FEE (APPROX.)

\$450K

✓ Federal Aid Project

"Your expertise in NEPA and Section 106 Historic Preservation processes were invaluable to keeping the project on track. We could not have asked for a better partner to stand alongside us as we engaged with stakeholders interested in historic resources, parks, and public spaces. Your ability to listen and truly hear all perspectives, combined with your calm presence helped the team make better project decisions."

- Brandi Peacher Project Manager



Clays Mill - Section 1

Lochner provided right of way acquisition services for this 1.9 mile urban arterial in Lexington, KY. The project will widen Clays Mill Road (Waco Road to Harrodsburg Road) from two to four lanes with a center turn lane. Bike lanes will also be included in the design. Approximately 166 parcels were impacted, and Lochner provided right of way acquisition services for 66 of those.

The project represents a unique teaming arrangement, with the acquisition effort being co-managed by the local public agency (Lexington-Fayette Urban County Government) staff and Lochner. Through strategic communication and transparent coordination efforts on emerging issues, Lochner acted as a seamless extension of the city's limited staff to deliver the project in a timely manner. The corridor includes residential and commercial land uses, alongside several schools and churches. There were no condemnations on this project.

LOCATION

Fayette County, KY

FIRM ROLE

Prime

CLIENT

LFUCG

KEY TEAM MEMBERS & ROLE

Derrick Young, SR/WA (Acquisition)
Jennifer Golson, SR/WA (Acquisition)
Thoroughbred Real Estate Services (Sub)
Freeman Appraisal Service (Sub)

FEE (APPROX.)

\$381K

✓ Federal Aid Project



Boone County ROW Projects

Lochner has provided ROW services to Boone County, KY in a sub role to several engineering firms through Design On-call Contracts over the past several years. Since 2017, the Lochner team has acquired 45 parcels over the course of 6 improvement projects. Parcels acquired include airport, industrial, commercial, and residential properties.

Boone County is one of the fastest growing counties in Kentucky. With the CVG International Airport within in the county, there are many industrial and commercial businesses that are leading the development and need for these improvement projects. With that said, many of these businesses' corporate offices are not located locally therefore our agents have had to negotiate out of state and sometimes out of country in order to clear right of way for construction letting. Projects Include:

- Aviation Boulevard: 3 Parcels
- Dublin Drive Sidewalk Project: 18 Parcels
- Limaburg Road Project: 1 Parcel
- Longbranch Road Multi-use Path Project: 13 Parcels
- Litton Lane Sidewalk Project: 4 Parcels
- Veterans Way Multi-use Path Project: 6 Parcels

LOCATION

Boone County, KY

FIRM ROLE

Subconsultant

CLIENT

Boone County

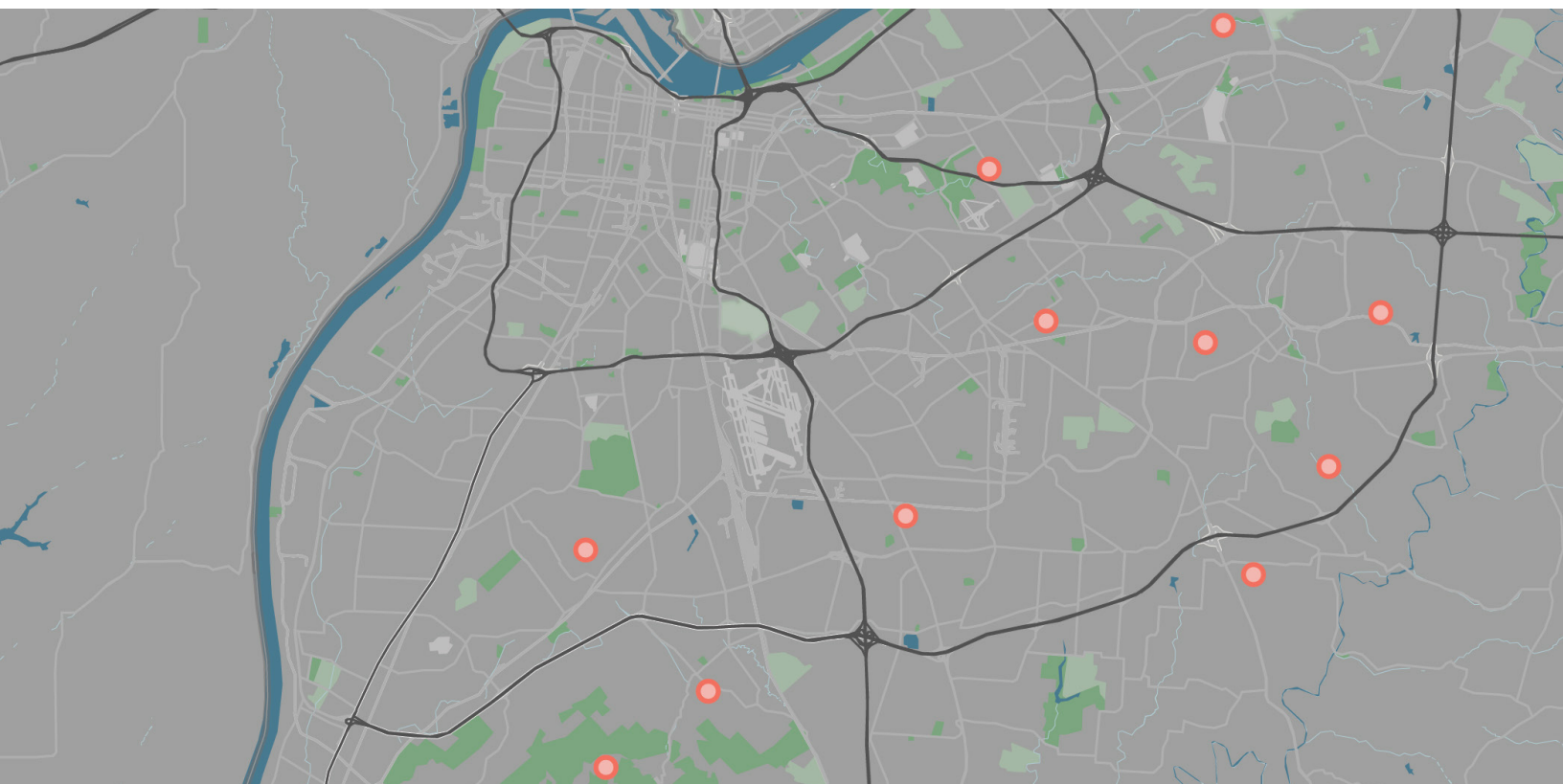
KEY TEAM MEMBERS & ROLE

Derrick Young, SR/WA (PM)
Larry Graves (PM)
Jennifer Golson, SR/WA (Acquisition)
Drew Mackell (Acquisition)
Kari Stockdale (Acquisition)
Wade Abbott, SET, SR/WA (Acquisition)
Chapman and Associates (Sub)
Freeman Appraisal Service (Sub)

FEE (APPROX.)

\$213K

✓ Federal Aid Project



Louisville Metro ROW Contract

Lochner is providing miscellaneous ROW services to Louisville Metro through an on-going contract. Over the past four years, the Lochner team has acquired 32 parcels over the course of 12 improvement projects. Parcels acquired include churches, commercial, development, and residential properties. Even though most of these only required a strip of ROW or easement, the negotiations were sometimes complex. Leveraging our knowledge, experience, and capacity, we began these projects promptly and cleared the projects quickly for construction.

Both the Brentlinger Lane Connector project and Wolf Pen Branch projects impacted church property. Derrick and Larry met with church congregations on both projects to successfully reach settlement. Wade cleared a project within a week so Metro could meet its construction schedule.

Projects (illustrated in the graphic above) include:

- Stony Brook: 2 Parcels
- St. Anthony Church Road: 1 Parcel
- McCawley Road Sidewalk: 8 Parcels
- Six Mile Lane Sidewalk: 1 Parcel
- Wolf Pen Branch Sidewalk: 2 Parcels
- Bearcamp Road Culvert Replacement: 1 Parcel
- Cannons Lane Improvements: 6 Parcels
- Tucker Station Road Improvements: 2 Parcels
- Gelhaus Lane Improvement: 1 Parcel
- Ormsby Lane Improvement: 1 Parcel
- Manslick Road Improvement: 1 Parcel
- Brentlinger Lane Connector: 6 Parcels

LOCATION

Jefferson County, KY

FIRM ROLE

Prime

CLIENT

Louisville Metro Govt.

KEY TEAM MEMBERS & ROLE

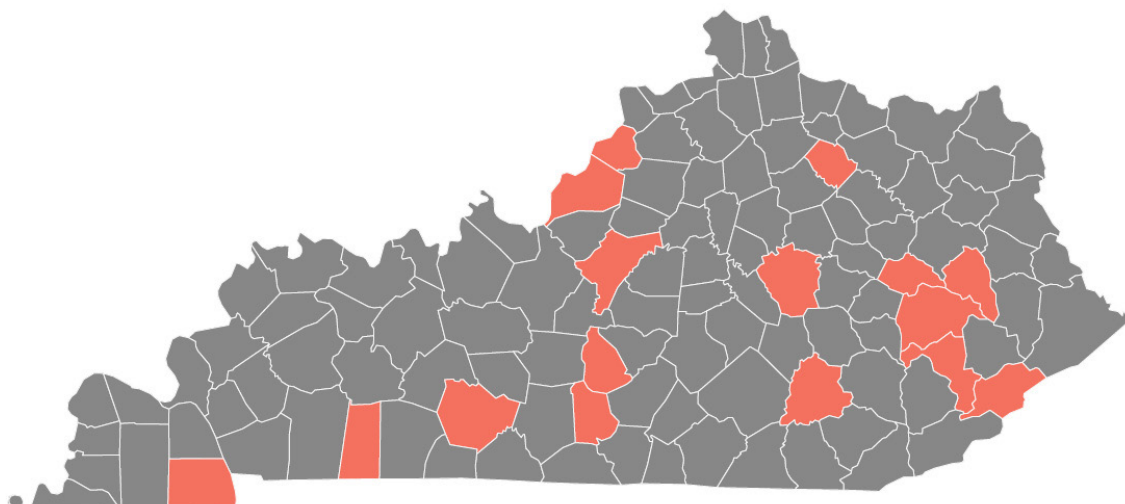
Derrick Young, SR/WA (PM)
 Jennifer Golson, SR/WA (Acquisition)
 Larry Graves (Acquisition)
 Wade Abbott, SET, SR/WA (Acquisition)
 Drew Mackell (Acquisition)
 Legacy Title Company (Sub)
 Chapman and Associates (Sub)
 Freeman Appraisal Service (Sub)

FEE (APPROX.)

\$167K

"Lochner has done a great job for Louisville Metro project in regards to acquisitions for various right of way jobs. Derrick Young as the overall project manager was professional, courteous, and easy to work with when it came to our work. I would not hesitate to work with Lochner when the opportunity presents itself."

- Mike Penick, ROW Manager, Louisville County Metro Govt



KYTC Statewide ROW Services

Since 2012, Lochner has successfully completed numerous projects under multiple cycles of this statewide ROW contract as shown below.

2021 to 2023 Contract:

- US 60, Montgomery County (LA#1): 83 Parcels and 6 Misc. Move Relocations

2021 to 2023 Contract:

- US 79, Todd County (LA#1): 33 Parcels, 1 Business Relocation, 3 Misc. Moves, 1 Outdoor Advertising Relocation
- KY 242, Warren County (LA#2): 5 Parcels
- US 68, Metcalfe County (LA#2): 5 Parcels
- US 68, Metcalfe & Green Counties (LA#2): 8 Parcels
- KY 884, Warren County (LA#3): 42 Parcels, 1 Residential Relocation, 1 Business Relocation, 1 Misc. Move

2019 to 2021 Contract:

- KY 15, Breathitt County (LA#1): 23 Parcels, 1 Residential Relocation, 3 Business Relocations, 2 Misc. Moves, 1 Outdoor Advertising Relocation

2017 to 2019 Contract:

- US 150, Nelson County (LA#1): 17 Parcels, 1 Residential Relocation, 2 Business Relocations, 1 Misc. Move, 5 Outdoor Advertising Relocations

2014 to 2016 Contract:

- KY 3084, Jefferson-Oldham County (LA#1): 40 Parcels, 1 Residential Relocation, 1 Misc. Move
- KY 1146, Perry County (LA#2): 6 Parcels, 2 Residential Relocations, 3 Business Relocations, 1 Misc. Move
- Mountain Parkway, Wolfe County (LA#2): 3 Parcels
- KY 2016, Wolfe County (LA#2): 3 Parcels
- US 641, Calloway County (LA#3): 23 Parcels

2012 to 2014 Contract:

- US 68, Nicholas County (LA#1): 20 Parcels, 2 Residential Relocations, 11 Misc. Moves
- KY 181, Todd County (LA#2): 32 Parcels
- 5th Street, Laurel County (LA#2): 24 Parcels, 2 Residential Relocations, 2 Misc. Moves
- Berea Bypass, Madison County (LA#2A): 28 Parcels
- I-75 Frontage Road, Laurel County (LA#3): 28 Parcels
- KY 9009, Magoffin County (LA#4): 13 Parcels, 2 Residential Relocations, 6 Misc. Moves
- Isom Race Track, Letcher County (LA#5): 4 Parcels, 2 Residential Relocations, 4 Misc. Moves

LOCATION

Statewide, KY

FIRM ROLE

Prime

CLIENT

KYTC

KEY TEAM MEMBERS & ROLE

Derrick Young, SR/WA (PM)
Jennifer Golson, SR/WA (PM, Relocation, Acquisition)
Kimberly Davis, SR/WA (Acquisition)
Lori Hogg (Relocation, Acquisition)
Drew Mackell (Acquisition)
Kari Stockdale (Acquisition)
Larry Graves (Acquisition)
Legacy Title Company (Sub)

FEE (APPROX.)

\$1.1M (to date)

✓ Federal Aid Project

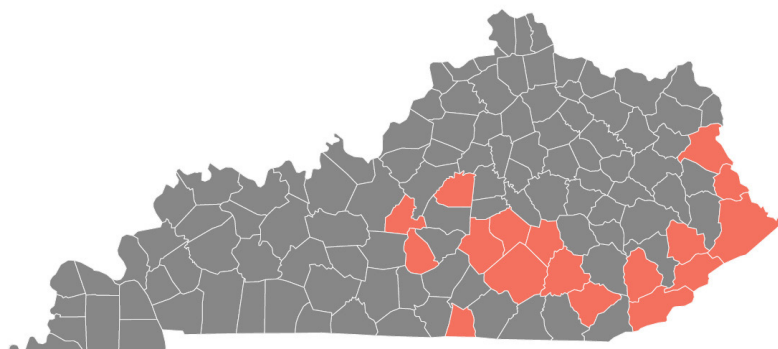


Bridge Program Delivery ROW Services

The KYTC Bridge Program Delivery Services is a program setup to rehabilitate or replace several bridges throughout the Commonwealth of Kentucky. Lochner is providing ROW services, structural design, roadway design, and environmental services as part of a consultant team.

This contract is for a period of two years and includes 34 bridges with potential ROW impacts to multiple parcels on each bridge. The bridging package Lochner is responsible for includes bridges in Southeastern Kentucky, South Central Kentucky, and Eastern Kentucky. The aggressive pace and complexity of the project requires regular status meetings and the use of e-Builder project management software.

This is a unique project with tight schedules. With bridges dispersed across multiple counties and each bridge on a separate schedule, we developed a separate tracking system. The project also includes responsibilities that would normally be assigned to a KYTC Supervisor, such as: developing Official Order requests, and developing ROW cost estimates. Lochner's role as a trusted partner and involvement early in the project development process provided the project team valuable insight on parcels to avoid/minimize, such as railroads and churches that would cause delays if impacted. With our large staff, we have been able to assign bridges by geographic proximity to their homes to deliver the bridge projects more efficiently.



LOCATION

Statewide, KY

FIRM ROLE

Subconsultant

CLIENT

KYTC

KEY TEAM MEMBERS & ROLE

Derrick Young, SR/WA (PM)
 Kimberly Davis, SR/WA (Acquisition)
 Lori Hogg (Acquisition)
 Wade Abbott, SET, SR/WA (Acquisition)
 Drew Mackell (Acquisition)
 Kari Stockdale (Acquisition)
 Calvin Andries (Acquisition)
 Legacy Title Company (Sub)
 Chapman and Associates (Sub)
 Thoroughbred Real Estate Services (Sub)
 Freeman Appraisal Service (Sub)

FEE (APPROX.)

\$994K



KY 242 & US 68 ROW Services

Under a statewide task-based contract with KYTC, Lochner is providing ROW services for three projects in District 3, one on KY 242 in Warren County and two on US 68 in Metcalfe and Green Counties. These services are being provided under a task-based contract. Overall project scope includes project preparation, project management, negotiations, acquisitions, relocations, appraisals, and closings.

KY 242 ROW Services

In Warren County, ROW services are needed to support the reconstruction of KY 242, which will add a left-turn lane into Richpond Elementary School. Lochner is managing the negotiations and acquisitions of five parcels of land (all partial acquisitions), all of which are residential land. Four of the parcels require BAV appraisals, and one requires a minor acquisition review. Lochner is responsible for the minor acquisition review, the presentation of offers to all property owners, the negotiation of purchase prices and terms, liaison with KYTC's attorney, and the coordination and oversight of the title transfers and closings.

US 68 ROW Services

In Metcalfe County, ROW services are needed to support the reconstruction of the US 68 (Glasgow to Greensburg) project north of Edmonton at the KY 70 intersection. Lochner is managing the negotiations and acquisitions of five parcels of land (all partial acquisitions) that are a mix of residential and agricultural land. One parcel requires a BAV appraisal and four parcels requires minor acquisition reviews. Lochner is responsible for the minor acquisition review, the presentation of offers to all property owners, the negotiation of purchase price and terms, liaison with KYTC, and the coordination and oversight of title transfers and closings.

US 68 ROW Services

In Metcalfe and Green Counties, ROW services are needed to support spot improvements on US 68 north of Edmonton between the intersections of US 68/745 and US 68/729. Lochner is managing the negotiations of eight parcels of land (all partial acquisitions) that are a mix of residential and agricultural land. Four of the parcels will require a BAV appraisal, two of the parcels will require a minor BAV, and two parcels will require a minor acquisition review. Lochner is responsible for the minor acquisition review, the presentation of offers to all property owners, the negotiation of purchase price and terms, liaison with KYTC's attorney, and the coordination and oversight of title transfers and closings. This project also included 1 miscellaneous move relocation.

LOCATION

Warren, Metcalfe, and Green Counties, KY

FIRM ROLE

Prime

CLIENT

KYTC

KEY TEAM MEMBERS & ROLE

Jennifer Golson, SR/WA (PM)
Kimberly Davis, SR/WA (Acquisition, Relocation)
Legacy Title Company (Sub)

FEE (APPROX.)

\$455K



KY 236/KY 3076 ROW Services

Both KY 236 (Donaldson Highway) and KY 3076 (Mineola Pike) are major arteries that lead directly to the Cincinnati/Northern Kentucky International Airport. The projects include widening from two to five lanes and pedestrian improvements for combined three miles. The Donaldson Highway project consists of 49 parcels with acquisition from the Kenton County Airport Board (this acquisition required FAA approval, which Lochner helped facilitate), the Diocese of Covington, and several businesses and residential properties. The Donaldson Highway project also included two residential relocations, and two outdoor advertising relocations. The Mineola Pike project impacts 16 parcels of mainly complex acquisitions with large corporations, foreign entities, and Kenton County Airport Board.

As a trusted partner of KYTC, and with so many former DOT staff, Lochner was asked to clear the ROW for the Donaldson/Mineola Pike due to the project's challenging schedule. After receiving Notice to Proceed in April 2021, the project area was successfully cleared in nine months. Given the tight timeframe, the Lochner team met weekly with the appraisers, review appraiser, title attorneys, and agents to make sure that both projects stayed on schedule. Knowing the importance of the projects, Lochner provided weekly and sometimes daily updates to the KYTC District 6 staff to reach agreements with critical parcels and keep all interests informed. The Lochner team along with KYTC District 6 and KYTC Central Office ROW staff worked as a cohesive team to meet the project schedule and delivered the cleared date on time for a successful letting.

LOCATION

Boone County, KY

FIRM ROLE

Prime

CLIENT

KYTC

KEY TEAM MEMBERS & ROLE

Derrick Young, SR/WA (PM)
 Jennifer Golson, SR/WA (Relocation)
 Wade Abbott, SET, SR/WA (Acquisition)
 Lori Hogg (Acquisition)
 Larry Graves (Acquisition)
 Drew Mackell (Acquisition)
 Chapman and Associates (Sub)
 Thoroughbred Real Estate Services (Sub)
 Freeman Appraisal Service (Sub)

FEE (APPROX.)

\$573K

"The work of Lochner was clear, concise, and complete to KYTC satisfaction. The project manager had excellent communication skills, was responsive, and provided updates in a timely and informative manner."

— Lynn Whalen, KYTC



US 460 Widening ROW Services

Section 1

The US 460 project will widen 6.6 miles of a two-lane road through the heart of horse country in Bourbon County, Kentucky. The project includes 64 parcels that required acquisition with 4 residential relocations, 1 business relocations and 2 miscellaneous moves.

The widening project impacts many prestigious horse farms along the US 460 route. These farms have invested in 4-plank horse fencing, maintaining historic dry-laid stone fences, extensive landscaping, and signature entrances. The project also includes impacts to the dense residential community of Centerville where Lochner managed the acquisition and relocation of the community convenience store. Lochner provided project management, appraisal services, relocation services and acquisition services. The complexity of dealing with many horse farms that had foreign owners was difficult at times but the Lochner team kept constant contact with farm managers to keep negotiations active which resulted in timely agreements. The Lochner team, including subs met a pressing schedule set forth by KYTC District 7. The team is eager to begin the 2nd ROW phase of the US 460 widening from Centerville to Georgetown, KY.

On one US 460 horse farm, the project will impact approximately 950' of historic dry-laid stone fence. KYTC had already committed to reconstructing the stone fence as a mitigation measure for impacts to historic properties. However, the property owner needed reassurance, and wanted input on where the fence would be relocated before they would complete negotiations. Due to Phil Logsdon's extensive experience with this exact type of mitigation, Lochner was able to educate the property owner about the measures that will ensure quality reconstruction and facilitate an MOU between the property owner and KYTC documenting KYTC's commitment to reconstructing the fence.

Section 2

The 2nd ROW phase of the US 460 project will widen 7.831 miles of a two-lane road from Centerville to Georgetown, Kentucky. The project includes 100 parcels that require 49 appraisals and 51 MARs with 1 residential relocation, 1 business (landlord) relocation, and 1 miscellaneous move. The Right of Way clearance date is April 1, 2025. The widening project consists of residential property and horse farms along the US 460 route. The project will include a roundabout intersection to improve safety and reduce congestion of the current two-lane road. Lochner is providing appraisal services, relocation services, and acquisition services.

LOCATION

Bourbon County, KY

FIRM ROLE

Prime

CLIENT

KYTC

KEY TEAM MEMBERS & ROLE

Larry Graves (PM Section 1/Acquisition Agent)

Jennifer Golson, SR/WA (PM Section 2/Lead Relocation Agent)

Derrick Young, SR/WA (Deputy PM/Lead Acquisition Agent)

Drew Mackell (Acquisition)

Lori Hogg (Acquisition)

Kari Stockdale (Acquisition)

Chapman and Associates (Sub)

Thoroughbred Real Estate Services (Sub)

Freeman Appraisal Service (Sub)

FEE (APPROX.)

\$751K

CLIENT REFERENCES

“

Over the past year, Lochner has been contracted to complete the ROW phases on a number of projects within our district, widely ranging in both size and complexity. On each and every one of these projects, Lochner and its representatives have completed their tasks in a timely and professional manner, constantly ensuring the project's schedule and budget stay the course. I would highly recommend Lochner for any future projects.”

— Mike Russell, KYTC

Client/Owner Reference	Project Name
Doug Burton, PE LFUCG 859.258.3472 wdburton@lexingtonky.gov	<ul style="list-style-type: none"> • Town Branch • Clays Mill
Daniel Menetrey, PE Boone Co. 859.334.3580 dmenetrey@boonecountyky.org	<ul style="list-style-type: none"> • Boone County ROW Projects
Mike Penick Louisville Metro 502.574.5338 mike.penick@louisvilleky.com	<ul style="list-style-type: none"> • Louisville Metro ROW Contract
Kelly Divine KYTC 270.746.7898 kelly.divine@ky.gov	<ul style="list-style-type: none"> • KYTC Statewide ROW Services
Royce Meredith KYTC 502.782.4968 royce.meredith@ky.gov	<ul style="list-style-type: none"> • Bridge Program Delivery ROW Services
Michael Russell KYTC 270.746.7898 michael.russell@ky.gov	<ul style="list-style-type: none"> • KY 242 & US 68 ROW Services • US 79 ROW Services
Lynn Whalen KYTC 859.341.2700 lynn.whelen@ky.gov	<ul style="list-style-type: none"> • KY 236/KY 3076 ROW Services
Cecil Smith KYTC 606.599.2114 cecil.smith@ky.gov	<ul style="list-style-type: none"> • US 460 Widening ROW Services



FORMS

AMERICAN RESCUE PLAN ACT

**AMENDMENT 1 —
CERTIFICATION OF COMPLIANCE FOR EXPENDITURES USING FEDERAL FUNDS,
INCLUDING THE AMERICAN RESCUE PLAN ACT**

The Lexington-Fayette Urban County Government (“LFUCG”) may use Federal funding to pay for the goods and/or services that are the subject matter of this bid. That Federal funding may include funds received by LFUCG under the American Rescue Plan Act of 2021. Expenditures using Federal funds require evidence of the contractor’s compliance with Federal law. Therefore, by the signature below of an authorized company representative, you certify that the information below is understood, agreed, and correct. Any misrepresentations may result in the termination of the contract and/or prosecution under applicable Federal and State laws concerning false statements and false claims.

The bidder (hereafter “bidder,” or “contractor”) agrees and understands that in addition to all conditions stated within the attached bid documents, the following conditions will also apply to any Agreement entered between bidder and LFUCG, if LFUCG uses Federal funds, including but not limited to funding received by LFUCG under the American Rescue Plan Act (“ARPA”), toward payment of goods and/or services referenced in this bid. The bidder also agrees and understands that if there is a conflict between the terms included elsewhere in this Request for Proposal and the terms of this Amendment 1, then the terms of Amendment 1 shall control. The bidder further certifies that it can and will comply with these conditions, if this bid is accepted and an Agreement is executed:

1. Any Agreement executed as a result of acceptance of this bid may be governed in accordance with 2 CFR Part 200 and all other applicable Federal law and regulations and guidance issued by the U.S. Department of the Treasury.
2. Pursuant to 24 CFR § 85.43, any Agreement executed as a result of acceptance of this bid can be terminated if the contractor fails to comply with any term of the award. This Agreement may be terminated for convenience in accordance with 24 CFR § 85.44 upon written notice by LFUCG. Either party may terminate this Agreement with thirty (30) days written notice to the other party, in which case the Agreement shall terminate on the thirtieth day. In the event of termination, the contractor shall be entitled to that portion of total compensation due under this Agreement as the services rendered bears to the services required. However, if LFUCG suspects a breach of the terms of the Agreement and/or that the contractor is violating the terms of any applicable law governing the use of Federal funds, LFUCG may suspend the contractor’s ability to receive payment by giving thirty (30) days’ advance written notice. Further, either party may terminate this Agreement for cause shown with thirty (30) days written notice, which shall explain the party’s cause for the termination. If the parties do not reach a settlement before the end of the 30 days, then the Agreement shall terminate on the thirtieth day. In the event of a breach, LFUCG reserves the right to pursue any and all applicable legal, equitable, and/or administrative remedies against the contractor.
3. The contractor will not discriminate against any employee or applicant for employment because of race, color, religion, sex, sexual orientation, gender identity, or national origin. The contractor will take affirmative action to ensure that applicants are employed and that employees are treated during employment without regard to their race, color, religion, sex, sexual orientation, gender identity, or national origin. Such action shall include, but not be limited to the following:
 - (1) Employment, upgrading, demotion, or transfer; recruitment or recruitment advertising; layoff or termination; rates of pay or other forms of compensation; and selection for training, including apprenticeship. The contractor agrees to post in conspicuous places, available to employees and

applicants for employment, notices to be provided setting forth the provisions of this nondiscrimination clause.

- (2) The contractor will, in all solicitations or advertisements for employees placed by or on behalf of the contractor, state that all qualified applicants will receive consideration for employment without regard to race, color, religion, sex, sexual orientation, gender identity, or national origin.
- (3) The contractor will not discharge or in any other manner discriminate against any employee or applicant for employment because such employee or applicant has inquired about, discussed, or disclosed the compensation of the employee or applicant or another employee or applicant. This provision shall not apply to instances in which an employee who has access to the compensation information of other employees or applicants as a part of such employee's essential job functions discloses the compensation of such other employees or applicants to individuals who do not otherwise have access to such information, unless such disclosure is in response to a formal complaint or charge, in furtherance of an investigation, proceeding, hearing, or action, including an investigation conducted by the employer, or is consistent with the contractor's legal duty to furnish information.
- (4) The contractor will send to each labor union or representative of workers with which he has a collective bargaining agreement or other contract or understanding a notice to be provided advising the said labor union or workers' representatives of the contractor's commitments under this section and shall post copies of the notice in conspicuous places available to employees and applicants for employment.
- (5) The contractor will comply with all provisions of Executive Order 11246 of September 24, 1965, and of the rules, regulations, and relevant orders of the Secretary of Labor.
- (6) The contractor will furnish all information and reports required by Executive Order 11246 of September 24, 1965, and by rules, regulations, and orders of the Secretary of Labor, or pursuant thereto, and will permit access to his books, records, and accounts by the administering agency and the Secretary of Labor for purposes of investigation to ascertain compliance with such rules, regulations, and orders.
- (7) In the event of the contractor's noncompliance with the nondiscrimination clauses of this contract or with any of the said rules, regulations, or orders, this contract may be canceled, terminated, or suspended in whole or in part, and the contractor may be declared ineligible for further government contracts or federally assisted construction contracts in accordance with procedures authorized in Executive Order 11246 of September 24, 1965, and such other sanctions may be imposed and remedies invoked as provided in Executive Order 11246 of September 24, 1965, or by rule, regulation, or order of the Secretary of Labor, or as otherwise provided by law.
- (8) The contractor will include the portion of the sentence immediately preceding paragraph (1) and the provisions of paragraphs (1) through (8) in every subcontract or purchase order unless exempted by rules, regulations, or orders of the Secretary of Labor issued pursuant to section 204 of Executive Order 11246 of September 24, 1965, so that such provisions will be binding upon each subcontractor or vendor. The contractor will take such action with respect to any subcontract or purchase order as the administering agency may direct as a means of enforcing such provisions, including sanctions for noncompliance.

Provided, however, that in the event a contractor becomes involved in or is threatened with litigation with a subcontractor or vendor as a result of such direction by the administering agency, the contractor may request the United States to enter into such litigation to protect the interests of the United States.

4. If fulfillment of the contract requires the contractor to employ mechanic's or laborers, the contractor further agrees that it can and will comply with the following:

- (1) *Overtime requirements: No contractor or subcontractor contracting for any part of the contract work which may require or involve the employment of laborers or mechanics shall require or permit any such laborer or mechanic in any workweek in which he or she is employed on such work to work in excess of forty hours in such a workweek unless such laborer or mechanic receives compensation at a rate not less than one and one-half times the basic rate of pay for all hours worked in excess of forty hours in such a workweek.*

- (2) *Violation: liability for unpaid wages; liquidated damages. In the event of any violation of the clause set forth in paragraph (1) of this section, the contractor and any subcontractor responsible therefor shall be liable for the unpaid wages. In addition, such contractor and subcontractor shall be liable to the United States (in the case of work done under contract for the District of Columbia or a territory, to such District or to such territory) for liquidated damages. Such liquidated damages shall be computed with respect to each individual laborer or mechanic, including watchmen and guards, employed in violation of the clause set forth in paragraph (1) of this section, in the sum of \$10 for each calendar day on which such individual was required or permitted to work in excess of the standard workweek of forty hours without payment of the overtime wages required by the clause set forth in paragraph (1) of this section.*
- (3) *Withholding for unpaid wages and liquidated damages. LFUCG shall upon its own action or upon written request of an authorized representative of the Department of Labor withhold or cause to be withheld, from any moneys payable on account of work performed by the contractor or subcontractor under any such contract or any other federal contract with the same prime contractor, or any other federally-assisted contract subject to the Contract Work Hours and Safety Standards Act, which is held by the same prime contractor, such sums as may be determined to be necessary to satisfy any liabilities of such contractor or subcontractor for unpaid wages and liquidated damages as provided in the clause set forth in paragraph (2) of this section.*
- (4) *Subcontracts. The contractor or subcontractor shall insert in any subcontracts the clauses set forth in paragraph (1) through (4) of this section and also a clause requiring the subcontractors to include these clauses in any lower-tier subcontracts. The prime contractor shall be responsible for compliance by any subcontractor or lower-tier subcontractor with the clauses set forth in paragraphs (1) through (4) of this section.*

5. *The contractor shall comply with all applicable standards, orders, or regulations issued pursuant to the Clean Air Act, as amended, 42 U.S.C. § 7401 et seq.*

6. *The contractor shall report each violation to LFUCG and understands and agrees that LFUCG will, in turn, report each violation as required to assure notification to the Treasury Department and the appropriate Environmental Protection Agency Regional Office.*

7. *The contractor shall include these requirements in numerical paragraphs 5 and 6 in each subcontract exceeding \$100,000 financed in whole or in part with Federal funding.*

8. *The contractor shall comply with all applicable standards, orders, or regulations issued pursuant to the Federal Water Pollution Control Act, as amended, 33 U.S.C. § 1251 et seq.*

9. *The contractor shall report each violation to LFUCG and understands and agrees that LFUCG will, in turn, report each violation as required to assure notification to the Treasury Department and the appropriate Environmental Protection Agency Regional Office.*

10. *The contractor shall include these requirements in numerical paragraphs 8 and 9 in each subcontract exceeding \$100,000 financed in whole or in part with Federal funds.*

11. *The contractor shall comply with all applicable standards, orders, or regulations issued pursuant to the Federal Water Pollution Control Act, as amended, 33 U.S.C. § 1251 et seq.*

12. *The contractor shall report each violation to LFUCG and understands and agrees that LFUCG will, in turn, report each violation as required to assure notification to the Treasury Department and the appropriate Environmental Protection Agency regional office.*

13. *The contractor shall include these requirements in numerical paragraphs 11 and 12 in each subcontract exceeding \$100,000 financed in whole or in part with American Rescue Plan Act funds.*

14. The contractor shall include this language in any subcontract it executes to fulfill the terms of this bid: “the sub-grantee, contractor, subcontractor, successor, transferee, and assignee shall comply with Title VI of the Civil Rights Act of 1964, which prohibits recipients of federal financial assistance from excluding from a program or activity, denying benefits of, or otherwise discriminating against a person on the basis of race, color, or national origin (42 U.S.C. § 2000d et seq.), as implemented by the Department of the Treasury’s Title VI regulations, 31 CFR Part 22, which are herein incorporated by reference and made a part of this contract (or agreement). Title VI also includes protection to persons with ‘Limited English Proficiency’ in any program or activity receiving federal financial assistance, 42 U.S.C. § 2000d et seq., as implemented by the Department of the Treasury’s Title VI regulations, 31 CFR Part 22, and herein incorporated by reference and made a part of this contract or agreement.”

15. *Contractors who apply or bid for an award of \$100,000 or more shall file the required certification that it will not and has not used federal appropriated funds to pay any person or organization for influencing or attempting to influence an officer or employee of any agency. Each tier certifies to the tier above that it will not and has not used federal appropriated funds to pay any person or organization for influencing or attempting to influence an officer or employee of any agency, a member of Congress, officer or employee of Congress, or an employee of a member of Congress in connection with obtaining any federal contract, grant, or any other award covered by 31 U.S.C. § 1352. Each tier shall also disclose any lobbying with non-federal funds that takes place in connection with obtaining any federal award. Such disclosures are forwarded from tier to tier, up to the recipient. The required certification is included here:*

- a. The undersigned certifies, to the best of his or her knowledge and belief, that:
 - (1) No Federal appropriated funds have been paid or will be paid, by or on behalf of the undersigned, to any person for influencing or attempting to influence an officer or employee of an agency, a Member of Congress, an officer or employee of Congress, or an employee of a Member of Congress in connection with the awarding of any Federal contract, the making of any Federal grant, the making of any Federal loan, the entering into of any cooperative agreement, and the extension, continuation, renewal, amendment, or modification of any Federal contract, grant, loan, or cooperative agreement.
 - (2) If any funds other than Federal appropriated funds have been paid or will be paid to any person for influencing or attempting to influence an officer or employee of any agency, a Member of Congress, an officer or employee of Congress, or an employee of a Member of Congress in connection with this Federal contract, grant, loan, or cooperative agreement, the undersigned shall complete and submit Standard Form-LLL, “Disclosure Form to Report Lobbying,” in accordance with its instructions.
 - (3) The undersigned shall require that the language of this certification be included in the award documents for all subawards at all tiers (including subcontracts, subgrants, and contracts under grants, loans, and cooperative agreements) and that all subrecipients shall certify and disclose accordingly.
- b. This certification is a material representation of fact upon which reliance was placed when this transaction was made or entered into. Submission of this certification is a prerequisite for making or entering into this transaction imposed by section 1352, title 31, U.S. Code. Any person who fails to file the required certification shall be subject to a civil penalty of not less than \$10,000 and not more than \$100,000 for each such failure.

16. The contractor acknowledges and certifies that it has not been debarred or suspended and further acknowledges and agrees that it must comply with regulations regarding debarred or suspended entities in accordance with 24 CFR § 570.489(l). Funds may not be provided to excluded or disqualified persons.

17. The contractor agrees and certifies that to the greatest extent practicable, it will prefer the purchase, acquisition, and use of all applicable goods, products or materials produced in the United States, in

conformity with 2 CFR 200.322 and/or section 70914 of Public Law No. 117-58, §§ 70901-52, also known as the Infrastructure Investment and Jobs Act, whichever is applicable.

18. The contractor agrees and certifies that all activities performed pursuant to any Agreement entered as a result of the contractor's bid, and all goods and services procured under that Agreement, shall comply with 2 C.F.R. § 200.216 (Prohibition on certain telecommunications and video surveillance services and equipment) and 2 C.F.R. 200 § 200..323 (Procurement of recovered materials), to the extent either section is applicable.

19. If this bid involves construction work for a project totaling \$10 million or more, then the contractor further agrees that all laborers and mechanics, etc., employed in the construction of the public facility project assisted with funds provided under this Agreement, whether employed by contractor, or contractor's contractors, or subcontractors, shall be paid wages complying with the Davis-Bacon Act (40 U.S.C. 3141-3144). Contractor agrees that all of contractor's contractors and subcontractors will pay laborers and mechanics the prevailing wage as determined by the Secretary of Labor and that said laborers and mechanics will be paid not less than once a week. The contractor agrees to comply with the Copeland Anti- Kick Back Act (18 U.S.C. § 874) and its implementing regulations of the U.S. Department of Labor at 29 CFR part 3 and part 5. The contractor further agrees to comply with the applicable provisions of the Contract Work Hours and Safety Standards Act (40 U.S.C. Section 327-333), and the applicable provisions of the Fair Labor Standards Act of 1938, as amended (29 U.S.C. et seq.). Contractor further agrees that it will report all suspected or reported violations of any of the laws identified in this paragraph to LFUCG.



Signature

July 16, 2024

Date

WORKFORCE ANALYSIS FORM

Name of Organization: H.W. Lochner, Inc.

Categories	Total	White (Not Hispanic or Latino)		Hispanic or Latino		Black or African- American (Not Hispanic or Latino)		Native Hawaiian and Other Pacific Islander (Not Hispanic or Latino)		Asian (Not Hispanic or Latino)		American Indian or Alaskan Native (not Hispanic or Latino)		Two or more races (Not Hispanic or Latino)		Total	
		M	F	M	F	M	F	M	F	M	F	M	F	M	F	M	F
Administrators																	
Professionals		243	73	24	5	8	3		1	1	8	26		3	2	305	92
Superintendents		51	19	3		1				1		1				56	19
Supervisors																	
Foremen																	
Technicians		106	19		7	8	1			26	1	7	2	6	1	208	30
Protective																	
Para-																	
Office/Clerical		3	35	1	10	1	2				2					5	49
Skilled Craft																	
Service/Maintena																	
Total:		403	146	28	22	18	6		1	28	11	34	2	9	3	574	190

Prepared by: Kristin Shockley, HR Generalist Date: 7 / 3 / 2024

(Name and Title)

Revised 2015-Dec-15

AFFIDAVIT

Comes the Affiant, Thomas J. Gilpin, PE, and after being first duly sworn, states under penalty of perjury as follows:

1. His/her name is Thomas J. Gilpin, PE and he/she is the individual submitting the proposal or is the authorized representative of H.W. Lochner, Inc., the entity submitting the proposal (hereinafter referred to as "Proposer").
2. Proposer will pay all taxes and fees, which are owed to the Lexington-Fayette Urban County Government at the time the proposal is submitted, prior to award of the contract and will maintain a "current" status in regard to those taxes and fees during the life of the contract.
3. Proposer will obtain a Lexington-Fayette Urban County Government business license, if applicable, prior to award of the contract.
4. Proposer has authorized the Division of Procurement to verify the above-mentioned information with the Division of Revenue and to disclose to the Urban County Council that taxes and/or fees are delinquent or that a business license has not been obtained.
5. Proposer has not knowingly violated any provision of the campaign finance laws of the Commonwealth of Kentucky within the past five (5) years and the award of a contract to the Proposer will not violate any provision of the campaign finance laws of the Commonwealth.
6. Proposer has not knowingly violated any provision of Chapter 25 of the Lexington-Fayette Urban County Government Code of Ordinances, known as "Ethics Act."

Continued on next page

7. Proposer acknowledges that "knowingly" for purposes of this Affidavit means, with respect to conduct or to circumstances described by a statute or ordinance defining an offense, that a person is aware or should have been aware that his conduct is of that nature or that the circumstance exists.

Further, Affiant sayeth naught.

STATE OF Kentucky

COUNTY OF Fayette

The foregoing instrument was subscribed, sworn to and acknowledged before me

by Thomas J. Gilpin on this the 15 day
of July, 2024

My Commission expires: 12/01/2025

Waide R. Abbott
NOTARY PUBLIC, STATE AT LARGE



EQUAL OPPORTUNITY AGREEMENT

Standard Title VI Assurance

The Lexington Fayette-Urban County Government, (hereinafter referred to as the "Recipient") hereby agrees that as a condition to receiving any Federal financial assistance from the U.S. Department of Transportation, it will comply with Title VI of the Civil Rights Act of 1964, 78Stat.252, 42 U.S.C. 2000d-4 (hereinafter referred to as the "Act"), and all requirements imposed by or pursuant to Title 49, Code of Federal Regulations, U.S. Department of Transportation, Subtitle A, Office of the Secretary, (49 CFR, Part 21) Nondiscrimination in Federally Assisted Program of the Department of Transportation – Effectuation of Title VI of the Civil Rights Act of 1964 (hereinafter referred to as the "Regulations") and other pertinent directives, no person in the United States shall, on the grounds of race, color, national origin, sex, age (over 40), religion, sexual orientation, gender identity, veteran status, or disability be excluded from participation in, be denied the benefits of, or be otherwise subjected to discrimination under any program or activity for which the Recipient receives Federal financial assistance from the U.S. Department of Transportation, including the Federal Highway Administration, and hereby gives assurance that will promptly take any necessary measures to effectuate this agreement. This assurance is required by subsection 21.7(a) (1) of the Regulations.

The Law

- Title VII of the Civil Rights Act of 1964 (amended 1972) states that it is unlawful for an employer to discriminate in employment because of race, color, religion, sex, age (40-70 years) or national origin.
- Executive Order No. 11246 on Nondiscrimination under Federal contract prohibits employment discrimination by contractor and sub-contractor doing business with the Federal Government or recipients of Federal funds. This order was later amended by Executive Order No. 11375 to prohibit discrimination on the basis of sex.
- Section 503 of the Rehabilitation Act of 1973 states:

The Contractor will not discriminate against any employee or applicant for employment because of physical or mental handicap.

- Section 2012 of the Vietnam Era Veterans Readjustment Act of 1973 requires Affirmative Action on behalf of disabled veterans and veterans of the Vietnam Era by contractors having Federal contracts.
- Section 206(A) of Executive Order 12086, Consolidation of Contract Compliance Functions for Equal Employment Opportunity, states:


The Secretary of Labor may investigate the employment practices of any Government contractor or sub-contractor to determine whether or not the contractual provisions specified in Section 202 of this order have been violated.

The Lexington-Fayette Urban County Government practices Equal Opportunity in recruiting, hiring and promoting. It is the Government's intent to affirmatively provide employment opportunities for those individuals who have previously not been allowed to enter into the mainstream of society. Because of its importance to the local Government, this policy carries the full endorsement of the Mayor, Commissioners, Directors and all supervisory personnel. In following this commitment to Equal Employment Opportunity and because the Government is the benefactor of the Federal funds, it is both against the Urban County Government policy and illegal for the Government to let contracts to companies which knowingly or unknowingly practice discrimination in their employment practices. Violation of the above mentioned ordinances may cause a contract to be canceled and the contractors may be declared ineligible for future consideration.

Please sign this statement in the appropriate space acknowledging that you have read and understand the provisions contained herein. Return this document as part of your application packet.

Bidders

I/We agree to comply with the Civil Rights Laws listed above that govern employment rights of minorities, women, Vietnam veterans, handicapped and aged persons.



Signature

H.W. Lochner, Inc.

Name of Business

225 West Washington Street, 12th Floor
Chicago, Illinois 60606
Telephone: 312.372.7346

Title VI/Nondiscrimination Civil Rights Policy Statement

It is the policy of H.W. Lochner, Inc. to comply with the regulations of Title VI of the Civil Rights Act of 1964, as amended and other nondiscrimination laws and authorities, that include regulations relative to nondiscrimination in federally-assisted programs of the Department of Transportation (DOT) Title 49, Code of Federal Regulations (CFR) and the Federal Highway Administration's Title 23 Code of Federal Regulations 200. H.W. Lochner, Inc. does not discriminate against any person on the ground of race, color or national origin.

In addition to Title VI, H.W. Lochner, Inc. will not discriminate under other statutes that afford legal protection on the basis of sex, age or disability. H.W. Lochner, Inc. will not discriminate in the selection or retention of sub-consultants, including procurements of materials and leases of equipment. H.W. Lochner, Inc. will not participate either directly or indirectly in the discrimination prohibited by 49 CFR, Part 21.5.

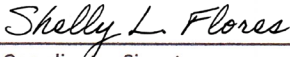
In all solicitations, either by competitive bidding or negotiation made by H.W. Lochner, Inc. for work to be performed under a subcontract, including procurements of materials or equipment, each potential subcontractor or supplier shall be notified of the contractor's obligations under the contract and the Regulations relative to nondiscrimination on the ground of race, color or national origin. H.W. Lochner, Inc. will include the necessary nondiscrimination provisions in every subcontract; including procurements of materials and leases of equipment, unless exempt by the Regulations, or directives issued pursuant thereto.

H.W. Lochner, Inc. ensures nondiscrimination in all programs and activities in accordance with Title VI of the Civil Rights Act of 1964.

If you need more information or special assistance for persons with disabilities, limited English proficiency, or persons with hearing and speech impairments, contact the following:

HW Lochner Title VI Coordinator
225 West Washington Street
Chicago, IL 60606
312.372.7346
hr@hwlochner.com

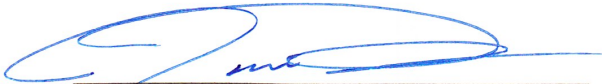
This policy directive was reviewed and adopted on February 17, 2022.



Title VI Coordinator Signature

02/17/2022

Date



Chief Operating Officer

02/17/2022

Date

**DIRECTOR, DIVISION OF PROCUREMENT
LEXINGTON-FAYETTE URBAN COUNTY GOVERNMENT
200 EAST MAIN STREET
LEXINGTON, KENTUCKY 40507**

**NOTICE OF REQUIREMENT FOR AFFIRMATIVE ACTION TO ENSURE EQUAL EMPLOYMENT
OPPORTUNITIES AND DBE CONTRACT PARTICIPATION**

Notice of requirement for Affirmative Action to ensure Equal Employment Opportunities and Disadvantaged Business Enterprises (DBE) Contract participation. Disadvantaged Business Enterprises (DBE) consists of Minority-Owned Business Enterprises (MBE) and Woman-Owned Business Enterprises (WBE).

The Lexington-Fayette Urban County Government has set a goal that not less than ten percent (10%) of the total value of this Contract be subcontracted to Disadvantaged Business Enterprises, which is made up of MBEs and WBEs. The Lexington Fayette Urban County Government also has set a goal that not less than three percent (3%) of the total value of this Contract be subcontracted to Veteran-owned Small Businesses. The goal for the utilization of Disadvantaged Business Enterprises as well Veteran –owned Small Businesses as subcontractors is a recommended goal. Contractor(s) who fail to meet such goal will be expected to provide written explanations to the Director of the Division of Purchasing of efforts they have made to accomplish the recommended goal, and the extent to which they are successful in accomplishing the recommended goal will be a consideration in the procurement process. Depending on the funding source, other DBE goals may apply.

For assistance in locating Disadvantaged Business Enterprises Subcontractors contact:

Sherita Miller, MPA, Division of Procurement
Lexington-Fayette Urban County Government
200 East Main Street, 3rd Floor, Room 338
Lexington, Kentucky 40507
smiller@lexingtonky.gov

Complete Address: 2365 Harrodsburg Road, Suite B400 Lexington, KY 40504
Street City Zip

Contact Name: TJ Gilpin, PE Title: Vice President

Telephone Number: 859.224.4476 Fax Number: N/A

Email address: tgilpin@hwlochner.com



LFUCG MWDBE PARTICIPATION FORM
Bid/RFP/Quote Reference # 41-2024

The MWDBE and/or veteran subcontractors listed have agreed to participate on this Bid/RFP/Quote. If any substitution is made or the total value of the work is changed prior to or after the job is in progress, it is understood that those substitutions must be submitted to Procurement for approval immediately. **Failure to submit a completed form may cause rejection of the bid.**

MWDBE Company, Name, Address, Phone, Email	MBE WBE or DBE	Work to be Performed	Total Dollar Value of the Work	% Value of Total Contract
1. True Inspection Services, LLC 7310 Turfway Road, Suite 550 Florence, KY 41042 304.972.4177 david.bame@trueinspectionsservices.com	MBE/DBE	CEI Services	TBD	TBD
2. Legacy Title Company, LLC 1301 Clear Springs Trace Suite 200, Louisville, KY 40223 502.400.5550 alissa@legacyttitlecompany.net	WBE	Title Searches	TBD	TBD
3.				
4.				

The undersigned company representative submits the above list of MWDBE firms to be used in accomplishing the work contained in this Bid/RFP/Quote. Any misrepresentation may result in the termination of the contract and/or be subject to applicable Federal and State laws concerning false statements and false claims.

H.W. Lochner, Inc.

Company

July 16, 2024

Date

TJ Gilpin, PE

Company Representative

Vice President

Title

* Lochner will update and submit as needed once projects are assigned.



LFUCG MWDBE SUBSTITUTION FORM

Bid/RFP/Quote Reference # 41-2024

The substituted MWDBE and/or veteran subcontractors listed below have agreed to participate on this Bid/RFP/Quote. These substitutions were made prior to or after the job was in progress. These substitutions were made for reasons stated below and are now being submitted to Procurement for approval. By the authorized signature of a representative of our company, we understand that this information will be entered into our file for this project.

SUBSTITUTED MWDBE Company Name, Address, Phone, Email	MWDBE Formally Contracted/ Name, Address, Phone, Email	Work to Be Performed	Reason for the Substitution	Total Dollar Value of the Work	% Value of Total Contract
1.					
2.					
3.					
4.					

The undersigned acknowledges that any misrepresentation may result in termination of the contract and/or be subject to applicable Federal and State laws concerning false statements and false claims.

H.W. Lochner, Inc.

Company

July 16, 2024

Date

TJ Gilpin, PE

Company Representative

Vice President

Title

* Lochner will update and submit as needed once projects are assigned.



MWDBE QUOTE SUMMARY FORM
Bid/RFP/Quote Reference # 41-2024

The undersigned acknowledges that the minority and/or veteran subcontractors listed on this form did submit a quote to participate on this project. Failure to submit this form may cause rejection of the bid.

Company Name	Contact Person
Address/Phone/Email	Bid Package / Bid Date

MWDBE Company Addres	Contact Person	Contact Information (work phone, Email, cell)	Date Contacted	Services to be performed	Method of Communication (email, phone meeting, ad, event etc)	Total dollars \$\$ Do Not Leave Blank (Attach Documentation)	MBE * AA HA AS NA Female	Veteran

(MBE designation / AA=African American / HA= Hispanic American/AS = Asian American/Pacific Islander/ NA= Native American)

The undersigned acknowledges that all information is accurate. Any misrepresentation may result in termination of the contract and/or be subject to applicable Federal and State laws concerning false statements and claims.

H.W. Lochner, Inc.

Company
July 16, 2024

Date

TJ Gilpin, PE

Company Representative
Vice President

Title

* Lochner will update and submit as needed once projects are assigned.



LFUCG SUBCONTRACTOR MONTHLY PAYMENT REPORT

The LFUCG has a 10% goal plan adopted by city council to increase the participation of minority and women owned businesses in the procurement process. The LFUCG also has a 3% goal plan adopted by cited council to increase the participation of veteran owned businesses in the procurement process. In order to measure that goal LFUCG will track spending with MWDBE and Veteran contractors on a monthly basis. By the signature below of an authorized company representative, you certify that the information is correct, and that each of the representations set forth below is true. Any misrepresentation may result in termination of the contract and/or prosecution under applicable Federal and State laws concerning false statements and false claims. Please submit this form monthly to the Division of Procurement/ 200 East Main Street / Room 338 / Lexington, KY 40507.

Bid/RFP/Quote # 41-2024

Total Contract Amount Awarded to Prime Contractor for this Project _____

Project Name/ Contract #	Work Period/ From: _____ To: _____
Company Name:	Address: _____
Federal Tax ID:	Contact Person: _____

Subcontractor Vendor ID (name, address, phone, email)	Description of Work	Total Subcontract Amount	% of Total Contract Awarded to Prime for this Project	Total Amount Paid for this Period	Purchase Order number for subcontractor work (please attach PO)	Scheduled Project Start Date	Scheduled Project End Date

By the signature below of an authorized company representative, you certify that the information is correct, and that each of the representations set forth below is true. Any misrepresentations may result in the termination of the contract and/or prosecution under applicable Federal and State laws concerning false statements and false claims.

H.W. Lochner, Inc.

Company
July 16, 2024

Date

TJ Gilpin, PE

Company Representative
Vice President

Title

LFUCG STATEMENT OF GOOD FAITH EFFORTSBid/RFP/Quote # 41-2024

By the signature below of an authorized company representative, we certify that we have utilized the following Good Faith Efforts to obtain the maximum participation by MWDBE and Veteran-Owned business enterprises on the project and can supply the appropriate documentation.

 Advertised opportunities to participate in the contract in at least two (2) publications of general circulation media; trade and professional association publications; small and minority business or trade publications; and publications or trades targeting minority, women and disadvantaged businesses not less than fifteen (15) days prior to the deadline for submission of bids to allow MWDBE firms and Veteran-Owned businesses to participate.

 Included documentation of advertising in the above publications with the bidders good faith efforts package

 Attended LFUCG Procurement Economic Inclusion Outreach event

 Attended pre-bid meetings that were scheduled by LFUCG to inform MWDBEs and/or Veteran-Owned Businesses of subcontracting opportunities

 Sponsored Economic Inclusion event to provide networking opportunities for prime contractors and MWDBE firms and Veteran-Owned businesses

 Requested a list of MWDBE and/or Veteran subcontractors or suppliers from LFUCG and showed evidence of contacting the companies on the list(s).

 Contacted organizations that work with MWDBE companies for assistance in finding certified MWDBE firms and Veteran-Owned businesses to work on this project. Those contacted and their responses should be a part of the bidder's good faith efforts documentation.

 X Sent written notices, by certified mail, email or facsimile, to qualified, certified MWDBEs soliciting their participation in the contract not less than seven (7) days prior to the deadline for submission of bids to allow them to participate effectively.

 X Followed up initial solicitations by contacting MWDBEs and Veteran-Owned businesses to determine their level of interest.

 X Provided the interested MWDBE firm and/or Veteran-Owned business with adequate and timely information about the plans, specifications, and requirements of the contract.

 X Selected portions of the work to be performed by MWDBE firms and/or Veteran-Owned businesses in order to increase the likelihood of meeting the contract goals. This includes, where appropriate, breaking out contract work items

into economically feasible units to facilitate MWDBE and Veteran participation, even when the prime contractor may otherwise perform these work items with its own workforce

_____ Negotiated in good faith with interested MWDBE firms and Veteran-Owned businesses not rejecting them as unqualified without sound reasons based on a thorough investigation of their capabilities. Any rejection should be so noted in writing with a description as to why an agreement could not be reached.

_____ Included documentation of quotations received from interested MWDBE firms and Veteran-Owned businesses which were not used due to uncompetitive pricing or were rejected as unacceptable and/or copies of responses from firms indicating that they would not be submitting a bid.

_____ Bidder has to submit sound reasons why the quotations were considered unacceptable. The fact that the bidder has the ability and/or desire to perform the contract work with its own forces will not be considered a sound reason for rejecting a MWDBE and/or Veteran-Owned business's quote. Nothing in this provision shall be construed to require the bidder to accept unreasonable quotes in order to satisfy MWDBE and Veteran goals.

X Made an effort to offer assistance to or refer interested MWDBE firms and Veteran-Owned businesses to obtain the necessary equipment, supplies, materials, insurance and/or bonding to satisfy the work requirements of the bid proposal

X Made efforts to expand the search for MWBE firms and Veteran-Owned businesses beyond the usual geographic boundaries.

_____ Other--any other evidence that the bidder submits which may show that the bidder has made reasonable good faith efforts to include MWDBE and Veteran participation.

NOTE: Failure to submit any of the documentation requested in this section may be cause for rejection of bid. Bidders may include any other documentation deemed relevant to this requirement which is subject to approval by the MBE Liaison. Documentation of Good Faith Efforts must be submitted with the Bid, if the participation Goal is not met.

The undersigned acknowledges that all information is accurate. Any misrepresentations may result in termination of the contract and/or be subject to applicable Federal and State laws concerning false statements and claims.

H.W. Lochner, Inc.

TJ Gilpin, PE

Company
July 16, 2024

Company Representative
Vice President

Date

Title

GENERAL PROVISIONS

1. Each Respondent shall comply with all Federal, State & Local regulations concerning this type of service or good.

The Respondent agrees to comply with all statutes, rules, and regulations governing safe and healthful working conditions, including the Occupational Health and Safety Act of 1970, 29 U.S.C. 650 *et. seq.*, as amended, and KRS Chapter 338. The Respondent also agrees to notify the LFUCG in writing immediately upon detection of any unsafe and/or unhealthful working conditions at the job site. The Respondent agrees to indemnify, defend and hold the LFUCG harmless from all penalties, fines or other expenses arising out of the alleged violation of said laws.

2. Failure to submit ALL forms and information required in this RFP may be grounds for disqualification.
3. Addenda: All addenda and IonWave Q&A, if any, shall be considered in making the proposal, and such addenda shall be made a part of this RFP. Before submitting a proposal, it is incumbent upon each proposer to be informed as to whether any addenda have been issued, and the failure to cover in the bid any such addenda may result in disqualification of that proposal.
4. Proposal Reservations: LFUCG reserves the right to reject any or all proposals, to award in whole or part, and to waive minor immaterial defects in proposals. LFUCG may consider any alternative proposal that meets its basic needs.
5. Liability: LFUCG is not responsible for any cost incurred by a Respondent in the preparation of proposals.
6. Changes/Alterations: Respondent may change or withdraw a proposal at any time prior to the opening; however, no oral modifications will be allowed. Only letters, or other formal written requests for modifications or corrections of a previously submitted proposal which is addressed in the same manner as the proposal, and received by LFUCG prior to the scheduled closing time for receipt of proposals, will be accepted. The proposal, when opened, will then be corrected in accordance with such written request(s), provided that the written request is contained in a sealed envelope which is plainly marked "modifications of proposal".
7. Clarification of Submittal: LFUCG reserves the right to obtain clarification of any point in a bid or to obtain additional information from a Respondent.
8. Bribery Clause: By his/her signature on the bid, Respondent certifies that no employee of his/hers, any affiliate or Subcontractor, has bribed or attempted to bribe an officer or employee of the LFUCG.

9. Additional Information: While not necessary, the Respondent may include any product brochures, software documentation, sample reports, or other documentation that may assist LFUCG in better understanding and evaluating the Respondent's response. Additional documentation shall not serve as a substitute for other documentation which is required by this RFP to be submitted with the proposal,
10. Ambiguity, Conflict or other Errors in RFP: If a Respondent discovers any ambiguity, conflict, discrepancy, omission or other error in the RFP, it shall immediately notify LFUCG of such error in writing and request modification or clarification of the document if allowable by the LFUCG.
11. Agreement to Bid Terms: In submitting this proposal, the Respondent agrees that it has carefully examined the specifications and all provisions relating to the work to be done attached hereto and made part of this proposal. By acceptance of a Contract under this RFP, proposer states that it understands the meaning, intent and requirements of the RFP and agrees to the same. The successful Respondent shall warrant that it is familiar with and understands all provisions herein and shall warrant that it can comply with them. No additional compensation to Respondent shall be authorized for services or expenses reasonably covered under these provisions that the proposer omits from its Proposal.
12. Cancellation: If the services to be performed hereunder by the Respondent are not performed in an acceptable manner to the LFUCG, the LFUCG may cancel this contract for cause by providing written notice to the proposer, giving at least thirty (30) days notice of the proposed cancellation and the reasons for same. During that time period, the proposer may seek to bring the performance of services hereunder to a level that is acceptable to the LFUCG, and the LFUCG may rescind the cancellation if such action is in its best interest.

A. Termination for Cause

- (1) LFUCG may terminate a contract because of the contractor's failure to perform its contractual duties
- (2) If a contractor is determined to be in default, LFUCG shall notify the contractor of the determination in writing, and may include a specified date by which the contractor shall cure the identified deficiencies. LFUCG may proceed with termination if the contractor fails to cure the deficiencies within the specified time.
- (3) A default in performance by a contractor for which a contract may be terminated shall include, but shall not necessarily be limited to:
 - (a) Failure to perform the contract according to its terms, conditions and specifications;
 - (b) Failure to make delivery within the time specified or according

- to a delivery schedule fixed by the contract;
- (c) Late payment or nonpayment of bills for labor, materials, supplies, or equipment furnished in connection with a contract for construction services as evidenced by mechanics' liens filed pursuant to the provisions of KRS Chapter 376, or letters of indebtedness received from creditors by the purchasing agency;
- (d) Failure to diligently advance the work under a contract for construction services;
- (e) The filing of a bankruptcy petition by or against the contractor; or
- (f) Actions that endanger the health, safety or welfare of the LFUCG or its citizens.

B. At Will Termination

Notwithstanding the above provisions, the LFUCG may terminate this contract at will in accordance with the law upon providing thirty (30) days written notice of that intent. Payment for services or goods received prior to termination shall be made by the LFUCG provided these goods or services were provided in a manner acceptable to the LFUCG. Payment for those goods and services shall not be unreasonably withheld.

13. **Assignment of Contract:** The contractor shall not assign or subcontract any portion of the Contract without the express written consent of LFUCG. Any purported assignment or subcontract in violation hereof shall be void. It is expressly acknowledged that LFUCG shall never be required or obligated to consent to any request for assignment or subcontract; and further that such refusal to consent can be for any or no reason, fully within the sole discretion of LFUCG.
14. **No Waiver:** No failure or delay by LFUCG in exercising any right, remedy, power or privilege hereunder, nor any single or partial exercise thereof, nor the exercise of any other right, remedy, power or privilege shall operate as a waiver hereof or thereof. No failure or delay by LFUCG in exercising any right, remedy, power or privilege under or in respect of this Contract shall affect the rights, remedies, powers or privileges of LFUCG hereunder or shall operate as a waiver thereof.
15. **Authority to do Business:** The Respondent must be a duly organized and authorized to do business under the laws of Kentucky. Respondent must be in good standing and have full legal capacity to provide the services specified under this Contract. The Respondent must have all necessary right and lawful authority to enter into this Contract for the full term hereof and that proper corporate or other action has been duly taken authorizing the Respondent to enter into this Contract. The Respondent will provide LFUCG with a copy of a corporate resolution authorizing this action and a letter from an attorney confirming that the proposer is authorized to do business in the State of Kentucky if requested. All proposals must

be signed by a duly authorized officer, agent or employee of the Respondent.

16. **Governing Law:** This Contract shall be governed by and construed in accordance with the laws of the Commonwealth of Kentucky. In the event of any proceedings regarding this Contract, the Parties agree that the venue shall be the Fayette County Circuit Court or the U.S. District Court for the Eastern District of Kentucky, Lexington Division. All parties expressly consent to personal jurisdiction and venue in such Court for the limited and sole purpose of proceedings relating to this Contract or any rights or obligations arising thereunder. Service of process may be accomplished by following the procedures prescribed by law.
17. **Ability to Meet Obligations:** Respondent affirmatively states that there are no actions, suits or proceedings of any kind pending against Respondent or, to the knowledge of the Respondent, threatened against the Respondent before or by any court, governmental body or agency or other tribunal or authority which would, if adversely determined, have a materially adverse effect on the authority or ability of Respondent to perform its obligations under this Contract, or which question the legality, validity or enforceability hereof or thereof.
18. Contractor understands and agrees that its employees, agents, or subcontractors are not employees of LFUCG for any purpose whatsoever. Contractor is an independent contractor at all times during the performance of the services specified.
19. If any term or provision of this Contract shall be found to be illegal or unenforceable, the remainder of the contract shall remain in full force and such term or provision shall be deemed stricken.
20. Contractor [or Vendor or Vendor's Employees] will not appropriate or make use of the Lexington-Fayette Urban County Government (LFUCG) name or any of its trade or service marks or property (including but not limited to any logo or seal), in any promotion, endorsement, advertisement, testimonial or similar use without the prior written consent of the government. If such consent is granted LFUCG reserves the unilateral right, in its sole discretion, to immediately terminate and revoke such use for any reason whatsoever. Contractor agrees that it shall cease and desist from any unauthorized use immediately upon being notified by LFUCG.



TJ Gilpin, PE | Vice President

July 16, 2024

Signature

Date



SUBMITTED BY

Lochner
2365 Harrodsburg Road, Suite B400
Lexington, KY 40504

Contact: TJ Gilpin, PE | 859.224.4476