

February 4, 2026

Ms. Latasha Clifford
120 Glenn Pl
Lexington, KY 40505-3519
latashaclifford@icloud.com

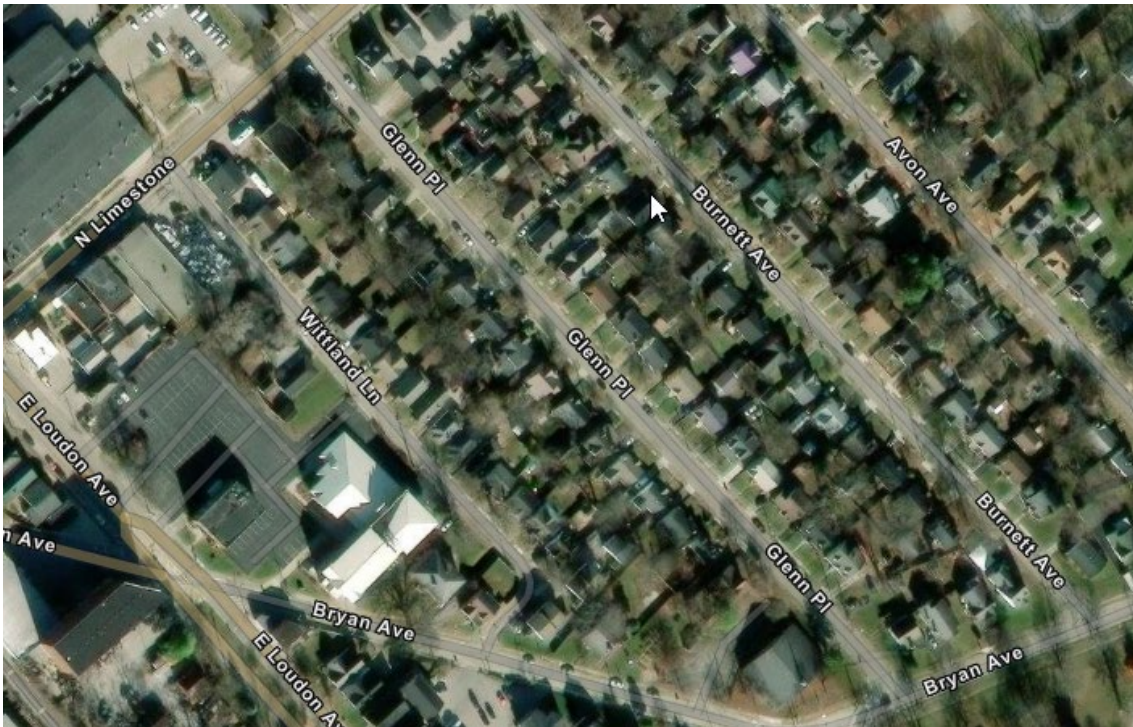
Dear Ms. Clifford,

Per your request, a study was completed on Glenn Pl between Bryan Ave and N Limestone to determine if this location qualifies for traffic calming measures through the Neighborhood Traffic Management Program (NTMP).

Study Area

The study area of Glenn Pl between Bryan Ave and N Limestone and the following characteristics:

- Road Classification: Local
- Speed limit: 25 mph
- Width: 26 feet
- Utility Strips/Sidewalks: Yes
- Street lighting: Yes
- On-street parking: Yes
- Pavement markings: No
- Property zoning: R-3



Aerial of Glenn Pl study area and surrounding area



NTMP Criteria

As detailed in the *Neighborhood Traffic Management Program (NTMP)* manual, locations must satisfy criteria to qualify for traffic calming funding. The NTMP minimum vehicular volume criteria for a local, residential road include the following:

- A. Daily Traffic Volumes greater than or equal to 1,000 vehicles per day or Peak Hour Volumes greater than or equal to 100 vehicles per hour.
- B. Daily Traffic Volumes greater than or equal to 750 vehicles per day with at least 25 percent of vehicles traveling at speeds in excess of the posted speed limit, and where 10 percent of the vehicles are traveling at speeds in excess of the posted speed limit by 10 mph or more.
- C. Daily Traffic Volumes that show 75 percent of the number of vehicles traveling along the roadway are exceeding the posted speed limit, and where the 85th percentile speeds exceeds the posted speed limit by 10 mph or more.
- D. Local, residential streets that do not have sidewalks, or any other pedestrian linkages.

Traffic Study

Traffic data was collected on Glenn PI in September 2025. The maximum average daily traffic over the study period was 690 vehicles per day. The maximum 85th percentile speed of vehicles on Glenn PI is 33 mph. The average speed of the vehicles on Glenn PI is 25 mph. The table below shows the averaged data that was obtained during the traffic count.

Segments of Glenn PI between Bryan Ave & N Limestone	Avg. Speed (mph)	Speed Limit (mph)	% over Speed Limit	85 th PCTL Speed (mph)	Peak Hour Vol. (veh)		Avg. Daily Traffic Vol. (veh)	
127 & 131 WB Glenn Place	26.30	25	55.90%	33	38	101	315	681
127 & 131 EB Glenn Place	26.33	25	57.20%	32	63		366	
153 & 159 WB Glenn Place	25.70	25	52.90%	31	40	104	324	690
153 & 159 EB Glenn Place	26.33	25	54.90%	32	64		366	

Based on the traffic data collected, Glenn PI **satisfies** the Neighborhood Traffic Management Program (NTMP) criteria. The data reveals that Peak Hour Volumes greater than or equal to 100 vehicles per hour meeting the required threshold criteria.



Collision History

A review of the collision history of this roadway per crashinformationky.org registered three (3) recorded collision in the study area during the three (3) years prior to this analysis.

Collision Type	No of Collisions
Sideswipe- Same Direction	1
Sideswipe-Opposite Direction	1
Angle	1

Recommendation

Based on the traffic data, engineering analysis, and current NTMP criteria, Glenn PI between Bryan Ave and N Limestone does qualifies for traffic calming.

Approved traffic calming options for this location include NTMP signs and Type 2 options.

- NTMP Signs
 - Installed at no cost.
 - Two signs would be posted with one facing each direction.
 - Sign designs may be selected from the NTMP sign enclosure.

- Type 2 NTMP Options
 - Options include speed tables, chicanes, chokers, textured pavement, landscaping, raised crosswalks, median islands, and traffic circles
 - Require a sponsor share paid for by the neighborhood prior to installation. Per the NTMP, based on the average property value in the petition area, the sponsor share is 20%.
 - The 2025 fiscal year cost per speed table is \$5,000 and traffic engineering recommends 3 or 4 speed tables for a roadway of this length.
 - Other options costs are based on a location specific design which is bid out to contractors

Emergency Services Review

The Division of Traffic Engineering coordinated with representatives from the Division of Police and Division of Fire and Emergency Services to obtain input regarding traffic and safety operations of Glenn PI.

- The Division of Fire and Emergency Services prefers NTMP signs over speed tables. It is in opposition to the installation of any speed tables. Speed Tables would cause delay and add time to the response in the event of an emergency call. Also, speed tables can be the cause of unwanted fire apparatus damage, leading to repairs funded by tax dollars.



- The Division of Police agrees with the Division of Fires and Emergency Services and is opposed to the installation of any speed tables. Speed tables would cause delay and add time to the response in the event of an emergency call.

Please review this information and share it with your neighbors. Do not hesitate to call me if you have any questions or require additional information.

Sincerely,



Deepika Eyunni, PE
Traffic Engineer, Senior
Division of Traffic Engineering
(859) 258-3486
deyunni@lexingtonky.gov

cc: Tyler Morton 1st District Councilmember
Nancy Albright, PE, Commissioner of Environmental Quality & Public Works
Jeffery Neal, PE, Director of Traffic Engineering
Jim Woods, PE, PLS, Deputy Director of Traffic Engineering
Roger T. Mulvaney, PE, PTOE, Traffic Engineer Manager
Christopher Van Brackel, Lieutenant, Division of Police
Embry Beatty, Fire Inspector of Fire & Emergency Services
Adina Tatum, Legislative Aide to CM Morton
Jaydan Norris, Legislative Aide to CM Morton

