

TODD JOHNSON CONTRACTING, INC.

Date: 11/12/2020

Quote: Jimmie Campbell Drive

Location: Lexington, Ky.

Mrs. Rank,

Please see the following breakdown for change order work for Abutment #2 at Jimmie Campbell Drive.

Mobilization - \$744.00

Demolition - \$8,436.62

Equipment - \$11,624.62

Labor - \$9,752.32

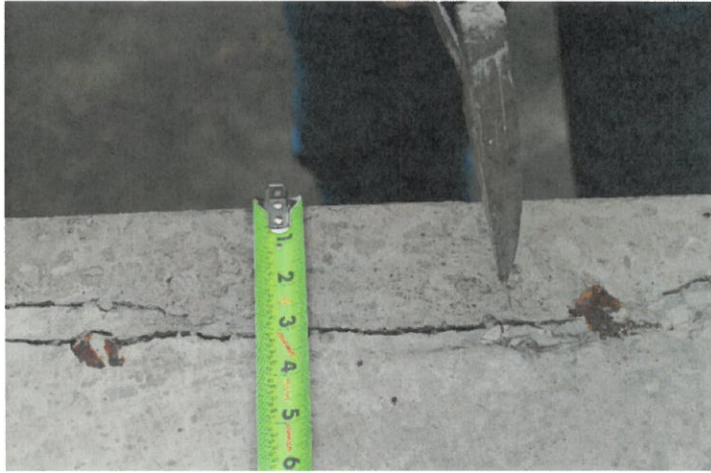
Material - \$2,676.29

Demobilize - \$744.00

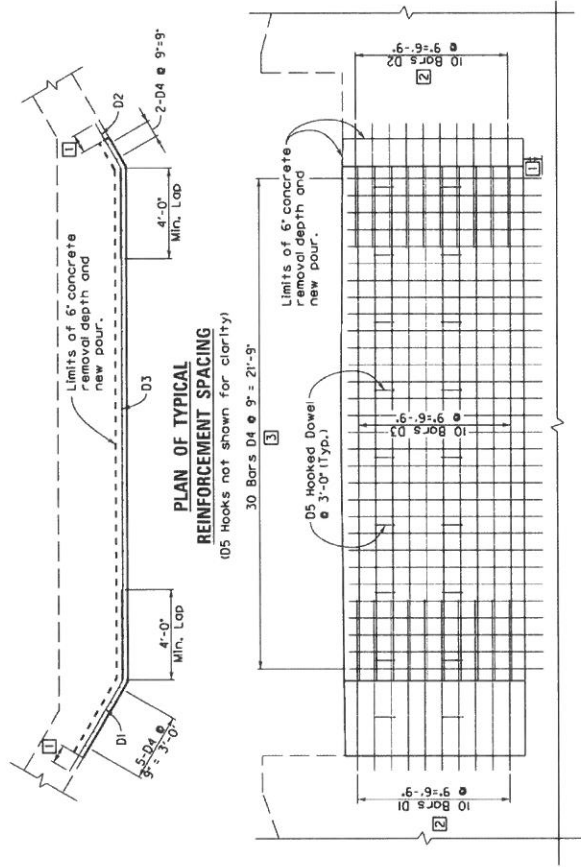
TOTAL: \$33,977.85

Also, Todd Johnson Contracting would like to request for an additional 30 Calendar days to complete the work. The reason requesting is for time to schedule the work, and with Thanksgiving Holiday approaching.

Thank You,

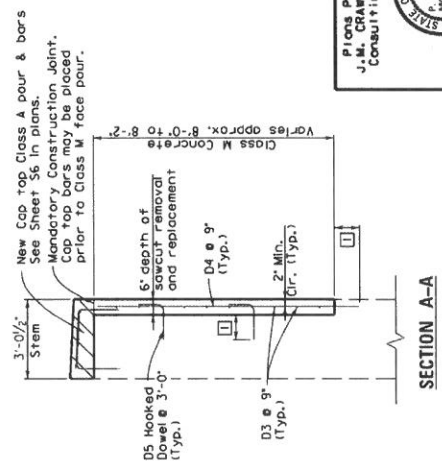




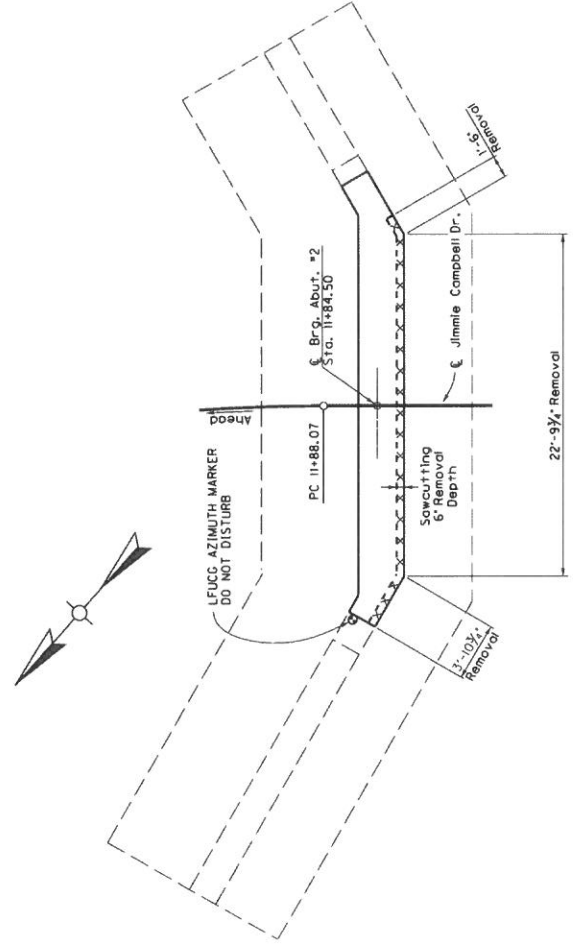


ELEVATION OF TYPICAL REINFORCEMENT SPACING
Looking Ahead Station

- 1) 10# Min. Embed (Typ.) See covering reinforcement in hardened concrete note on page A2.
- 2) Dowel bars D1 & D2 approx. halfway between existing reinforcement so that D3 bars are level and spaced at 9".
- 3) Dowel bars D4 approx. halfway between existing reinforcement, & 5" spacing

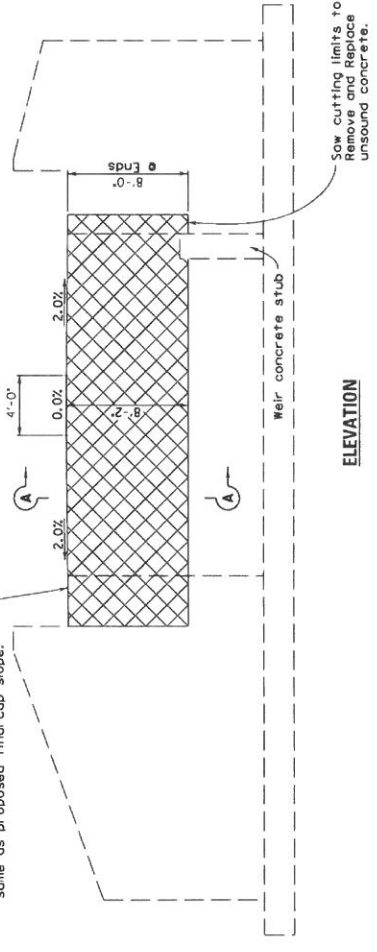


SECTION A-A



PLAN

At this phase of demolition, the Concrete and Reinforcement in the Cap has been removed to 6' below the original ground surface. Demolition & concrete is sloped the same as proposed final cap slope.



ELEVATION

DATE	REVISION	CHECKED BY	DATE
11/20		S. McIntosh	
DESIGNED BY: L. Corliss			
DETAILED BY: G. Crank			
Lexington-Fayette Urban County Government DEPARTMENT OF PUBLIC WORKS			
PROJECT JIMMIE CAMPBELL DRIVE OVER TOWN BRANCH			
DRAWN BY: JM			
CHECKED BY: JM			
SCALE: A1			

Plans Prepared by
J. M. Crawford & Assoc.
Consulting Engineers

REPAIR OF ABUTMENT 2 FACE

PROCEDURE:

1. SAWCUT ALONG THE PERIMETER OF THE CROSS-HATCHED AREA TO A DEPTH OF 6" AND REMOVE ALL MATERIALS IN THE CROSS-HATCHED AREA TO A DEPTH OF 6" AND DISPOSE OF THE MATERIALS IN ACCORDANCE WITH THE TECHNICAL SPECIFICATIONS. AFTER ALL DETERIORATED CONCRETE HAS BEEN REMOVED, THE REPAIR SURFACE SHALL BE CLEANED TO REMOVE CONTAMINANTS SUCH AS OIL, GREASE, DIRT, SLURRY, OR ANY UNDESIRABLE MATERIALS WHICH COULD INTERFERE WITH THE BOND OF FRESHLY PLACED CONCRETE. ALL LABOR, MATERIALS, AND EQUIPMENT SHALL BE INCIDENTAL TO THE ACTUAL REMOVE CONCRETE MASONRY QUANTITY, PER CUBIC YARD.
2. DRILL AND GROUT STEEL REINFORCEMENT DOWEL BARS AS SHOWN HEREIN. ALL LABOR, MATERIALS, AND EQUIPMENT SHALL BE INCIDENTAL TO THE ACTUAL STEEL REINFORCEMENT EPOXY-COATED QUANTITY, PER POUND.
3. SET STEEL REINFORCEMENT AND REQUIRED FORMWORK. INTERSECTING REINFORCING BARS SHALL BE TIGHTLY SECURED TO EACH OTHER USING TIE WIRE AND ADEQUATELY SUPPORTED TO MINIMIZE MOVEMENT DURING CONCRETE PLACEMENT. ALL LABOR, MATERIALS, AND EQUIPMENT FOR THE FORMWORK SHALL BE INCIDENTAL TO CLASS M CONCRETE, PER CUBIC YARD.
4. APPLY EPOXY-BONDING AGENT TO THE CONCRETE SURFACE JUST BEFORE PLACING THE NEW CONCRETE, IN ACCORDANCE WITH THE PLANS, SPECIFICATIONS AND THE TECHNICAL SPECIFICATION FOR STRUCTURAL ADHESIVES WITH EXTENDED CONTACT TIME. ALL LABOR, MATERIALS, AND EQUIPMENT SHALL BE INCIDENTAL TO CLASS M CONCRETE, PER CUBIC YARD.
5. PLACE THE CONCRETE, CURB, AND REMOVE THE FORMS, PER THE PLANS AND SPECIFICATIONS. PLACEMENT SHALL INCLUDE NECESSARY LABOR AND EQUIPMENT. SHALL BE MADE UNDER CLASS M CONCRETE, PER CUBIC YARD. FOR DETAILS ON CLASS M CONCRETE, REFER TO KDOT STANDARD SPECIFICATIONS FOR ROAD AND BRIDGE CONSTRUCTION SECTION 601.03.03(A).
6. FINISH THE CONCRETE AND APPLY CONCRETE SEALING TO THE REPAIRED AREA PER THE PLANS AND SPECIFICATIONS. THE ADDITIONAL QUANTITY WILL BE MADE UNDER CONCRETE SEALING, PER SQUARE FOOT.

PARTIAL REMOVAL OF EXISTING SUBSTRUCTURE:

REMOVE PARTS OF THE EXISTING SUBSTRUCTURES ACCORDING TO THESE PLANS. MEASUREMENT AND PAYMENT WILL BE ACCORDING TO THE TECHNICAL SPEC. FOR REMOVE CONCRETE MASONRY.

DOWELING REINFORCEMENT IN HARDENED CONCRETE:

REINFORCING BARS WHICH ARE TO BE DOWELED INTO EXISTING CONCRETE SHALL BE INSTALLED IN ACCORDANCE WITH THE SPECIFICATIONS AND THE TECHNICAL SPEC. FOR NON-EPOXY ADHESIVES. FOR THE #5 & #6 REINFORCING BARS, THE LENGTH TO DRILL AND EMBED IN EXISTING CONCRETE SHALL BE THE NON-EPOXY ADHESIVE MANUFACTURER'S RECOMMENDED LENGTH TO DEVELOP A TENSILE LOAD OF 18,600 & 26,400 LBS., RESPECTIVELY, OR 10 INCHES, WHICHEVER IS GREATER.

BONDING NEW CONCRETE TO EXISTING CONCRETE:

BOND NEW CONCRETE TO EXISTING CONCRETE IN ACCORDANCE WITH THE SPECIFICATIONS AND THE TECHNICAL SPEC. FOR STRUCTURAL ADHESIVES WITH EXTENDED CONTACT TIME.

VERIFY FIELD CONDITIONS:

ALL EXISTING FIELD DIMENSIONS AND ELEVATIONS WHETHER CALLED OUT ON THESE PLANS OR NOT, SHALL BE FIELD VERIFIED BY THE CONTRACTOR PRIOR TO FABRICATION OF ANY MATERIALS WHICH ARE CONTINGENT ON SUCH FIELD DIMENSIONS.

THE CONTRACTOR SHALL FIELD VERIFY ALL DIMENSIONS BEFORE ORDERING MATERIAL. NEW MATERIAL THAT IS UNSUITABLE BECAUSE OF VARIATIONS IN THE EXISTING STRUCTURE SHALL BE REPLACED AT THE CONTRACTOR'S EXPENSE.

CONCRETE SEALER:

APPLY CONCRETE SEALER IN ACCORDANCE WITH THE TECHNICAL SPEC. FOR CONCRETE SEALING AND TO THE LIMITS AS INDICATED IN THE PLANS.

BILL OF REINFORCEMENT, ABUTMENT #2 FACE REPAIR

MARK	TYPE	SIZE	NO.	LENGTH		LOCATION		C		D				
				FT.	IN.	FT.	IN.	FT.	IN.	FT.	IN.			
D1E	(6)	#6	10	8	8	ABUT. 2 FACE	4	8	3	5 5/8	2	0	4	0
D2E	(6)	#6	10	6	3		2	3	3	5 5/8	2	0	4	0
D3E	Str	#6	10	22	8 1/2									
D4E	Str	#6	37	8	9									
D5E	(1)	#5	18	2	0	ABUT. 2 FACE	1	2	0	10				

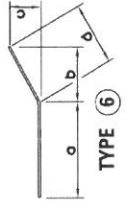
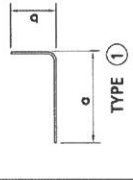
NOTE: FIELD CUT REINFORCEMENT AS-NEEDED TO FACILITATE CONSTRUCTION.

NOTE: ALL REINFORCEMENT IS EPOXY-COATED, AS DENOTED BY SUFFIX 'E'.

NOTE: ANY VARIATION IN EXISTING CONCRETE MASONRY REMOVAL WILL AFFECT THE BAR LENGTHS SHOWN HERE.

NOTE: BILL OF REINFORCEMENT REFLECTS DIMENSIONS AND REPAIR METHODS SHOWN. OTHER REINFORCEMENT LAYOUTS ARE PERMISSIBLE UPON APPROVAL OF THE DESIGN ENGINEER OF RECORD.

BAR TYPES



ESTIMATE OF QUANTITIES

QUANTITY	UNITS	ITEM
4.3	CY	CONCRETE CLASS M
1089	LB	STEEL REINFORCEMENT - EPOXY COATED
4.3	CY	REMOVE CONCRETE MASONRY
231	SF	CONCRETE SEALING

Plans Prepared By
J.M. Crawford & Assoc.
Consulting Engineers



DATE:	11/20	REVISION:	
DESIGNED BY:	L. Corliss	CHECKED BY:	S. McIntosh
DETAILED BY:	L. Corliss		
Lexington-Fayette Urban County Government DEPARTMENT OF PUBLIC WORKS			
PROJECT JIMMIE CAMPBELL DRIVE OVER TOWN BRANCH			
PREPARED BY ABUTMENT #2 FACE REPAIR			
SHEET NO. JMC Crawford & Associates A2			