



# Scope of Work and Goals

---

**Continue Delivering Operationally Efficient and Highly Cost-Effective System of Emergency Services**

**Conduct Fire Station Location Study**

**Determine Proper Levels of Resources for the FD to Deploy Over the Next Ten Years**

**Balance Safety Expectations of Citizens, Risk Factors and City Financial Position**

# Scope of Work and Goals

---

Provide Analysis, Recommendations and Cost

Recommendations to be Based on Service Demands, Future Development and High Quality of Public Safety Services

Identify & Provide Cost-Benefit of Regionalization and Privatization

Assess Fire Station Locations, Fire Prevention and Specialty Services Response (HazMat)

# INTENT OF THIS STUDY-Recommend\*

---

How Many Fire Stations Should the City Operate &  
Where Should these Stations be Located?

How Should the City Prioritize its Investments in Fire &  
Emergency Services Over the Next Ten Years

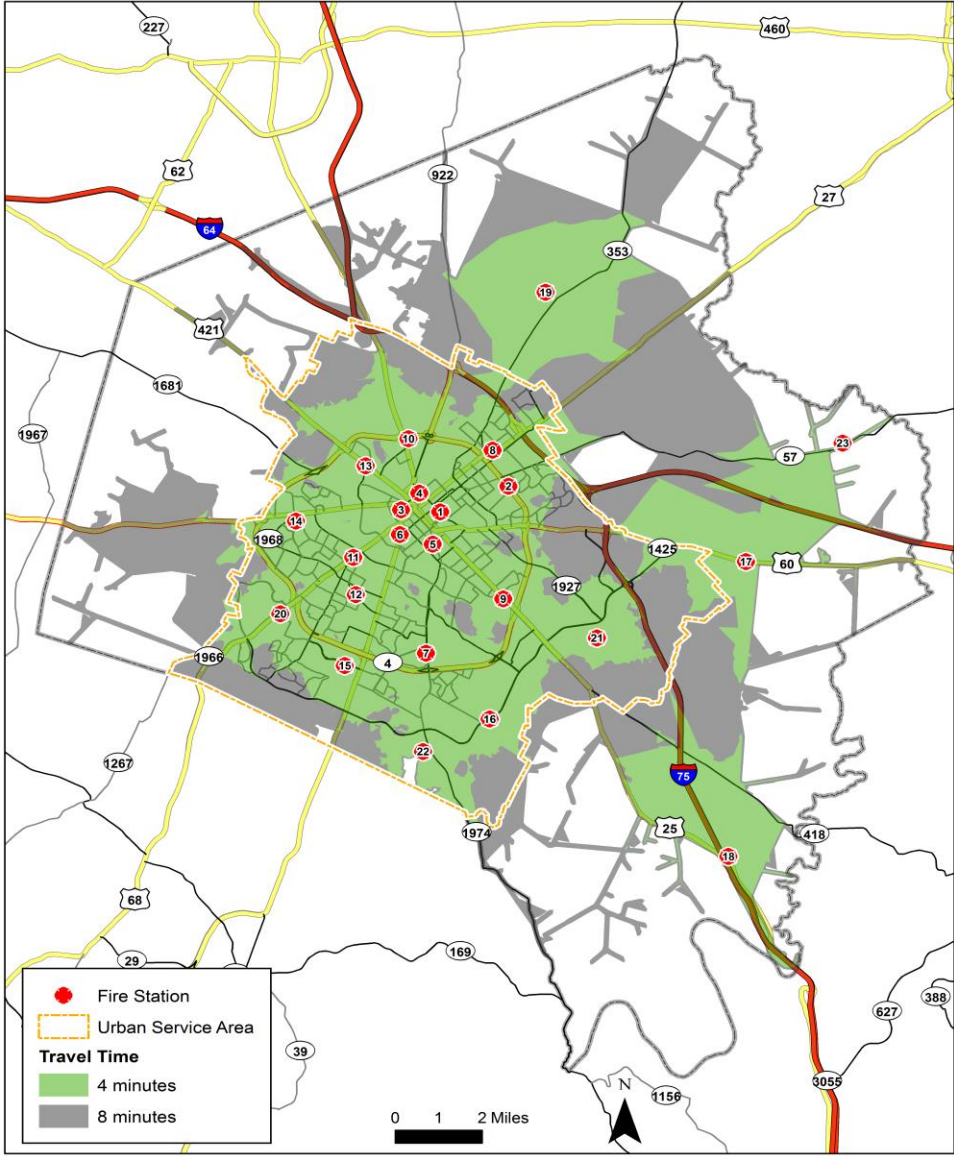
**TAKE NO EXCEPTION TO SCOPE OF SERVICES**

**WORK WITH CITY/LFD TO CUSTOMIZE DURING  
PROCESS**

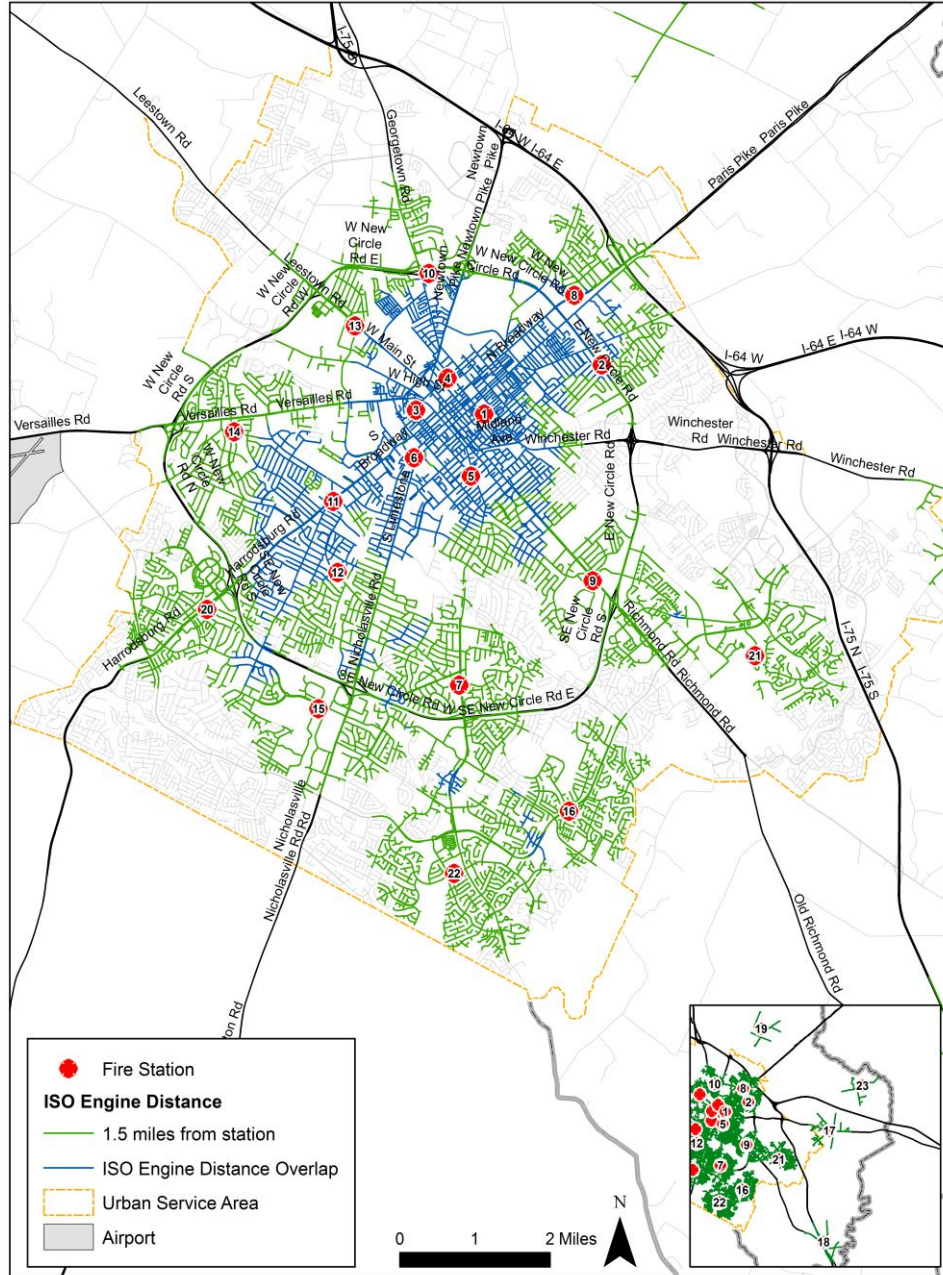
# Response Related Recommendations

1. Complete Standards of Cover Analysis and document(s)
2. Implement policy to tailor use of lights and siren based on criticality protocol
3. Incorporate “responding from” data point in the incident record
4. Cease creating new incident records for EMS units already dispatched
5. Review the unit response configuration and urgency related to false alarms
6. Relocate Station 2 as planned
7. Consolidate Stations 3 and 4 by 12/2025
8. Relocate Station 7 to Tates Creek Road and Windermere
9. Relocate Station 10 to Newtown Pike, north of New Circle Road

# Current Station Coverage

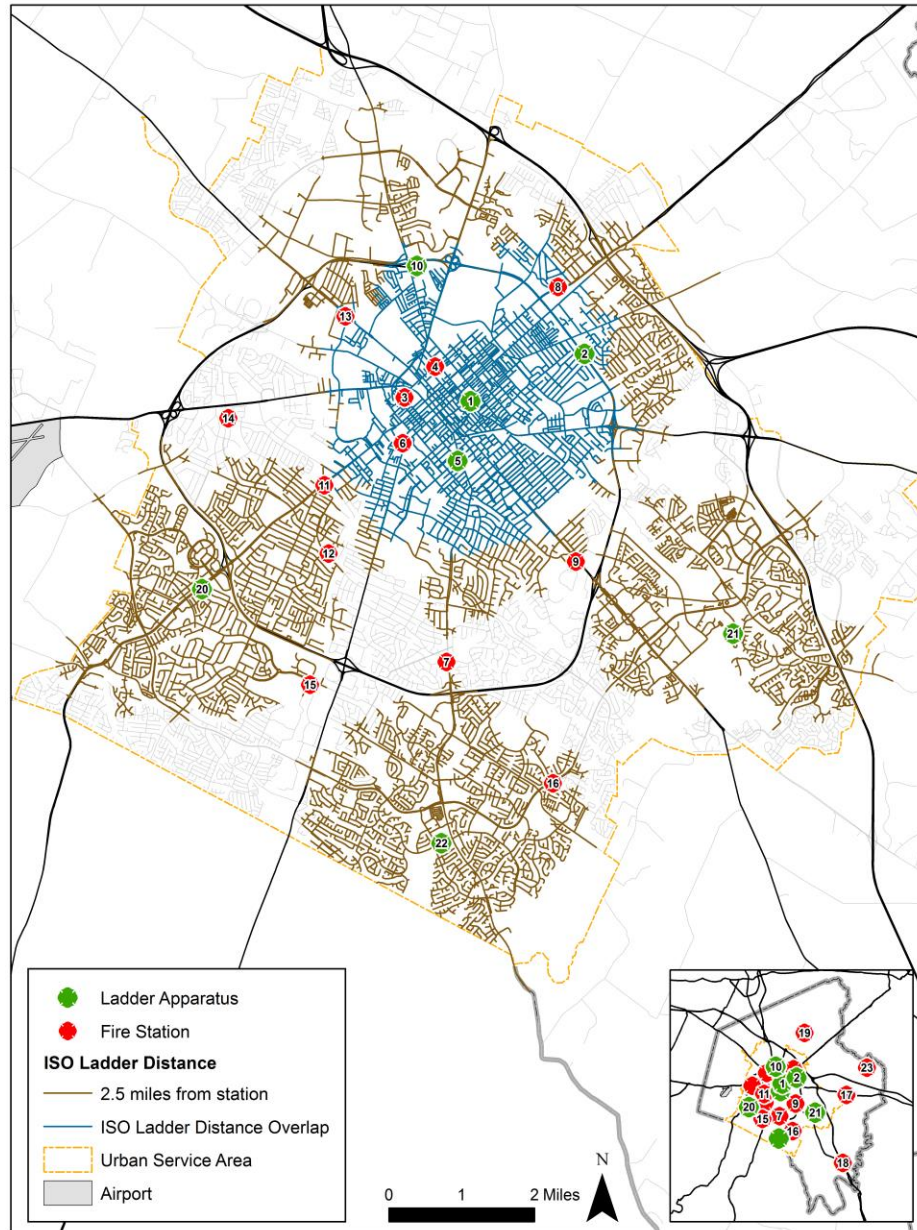


# ISO Engine Distance Coverage – 1.5 Mile





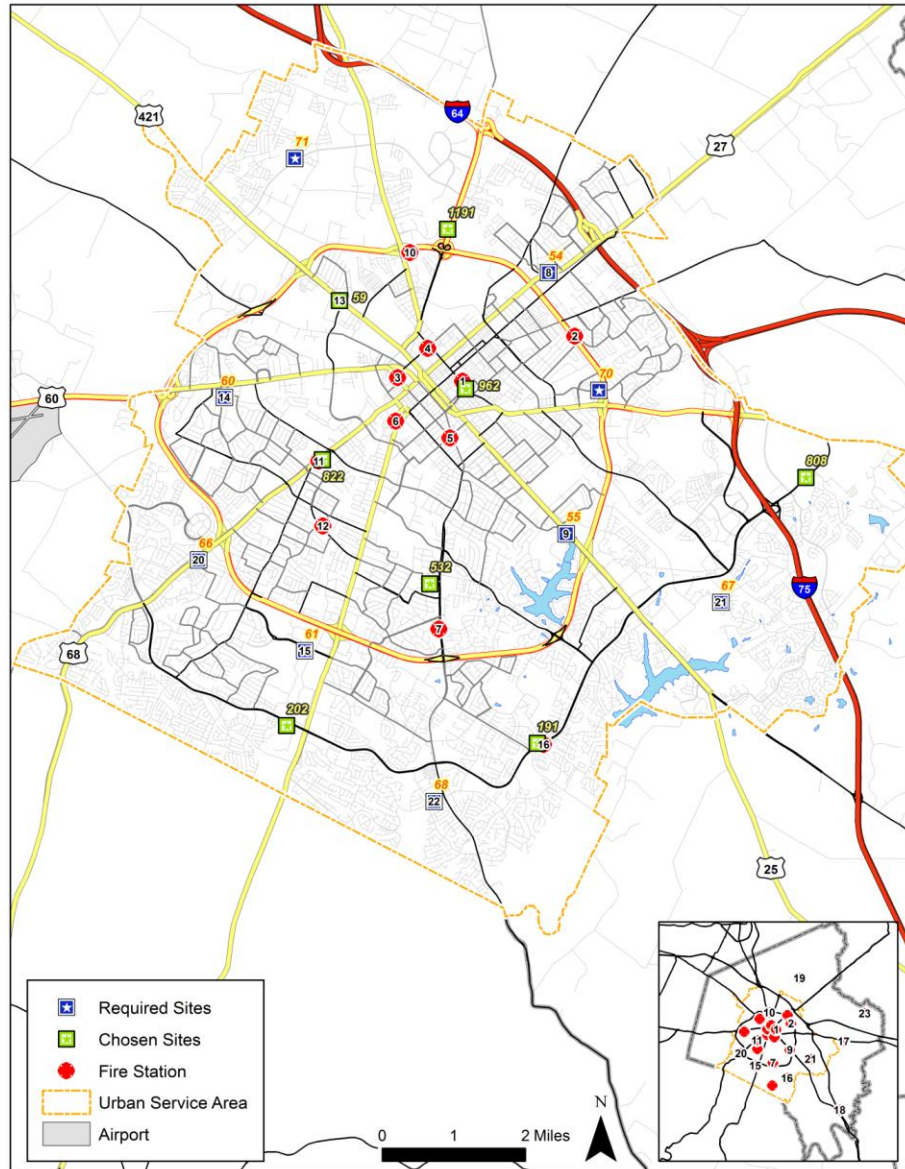
# ISO Ladder Truck Distance Coverage – 2.5 Mile





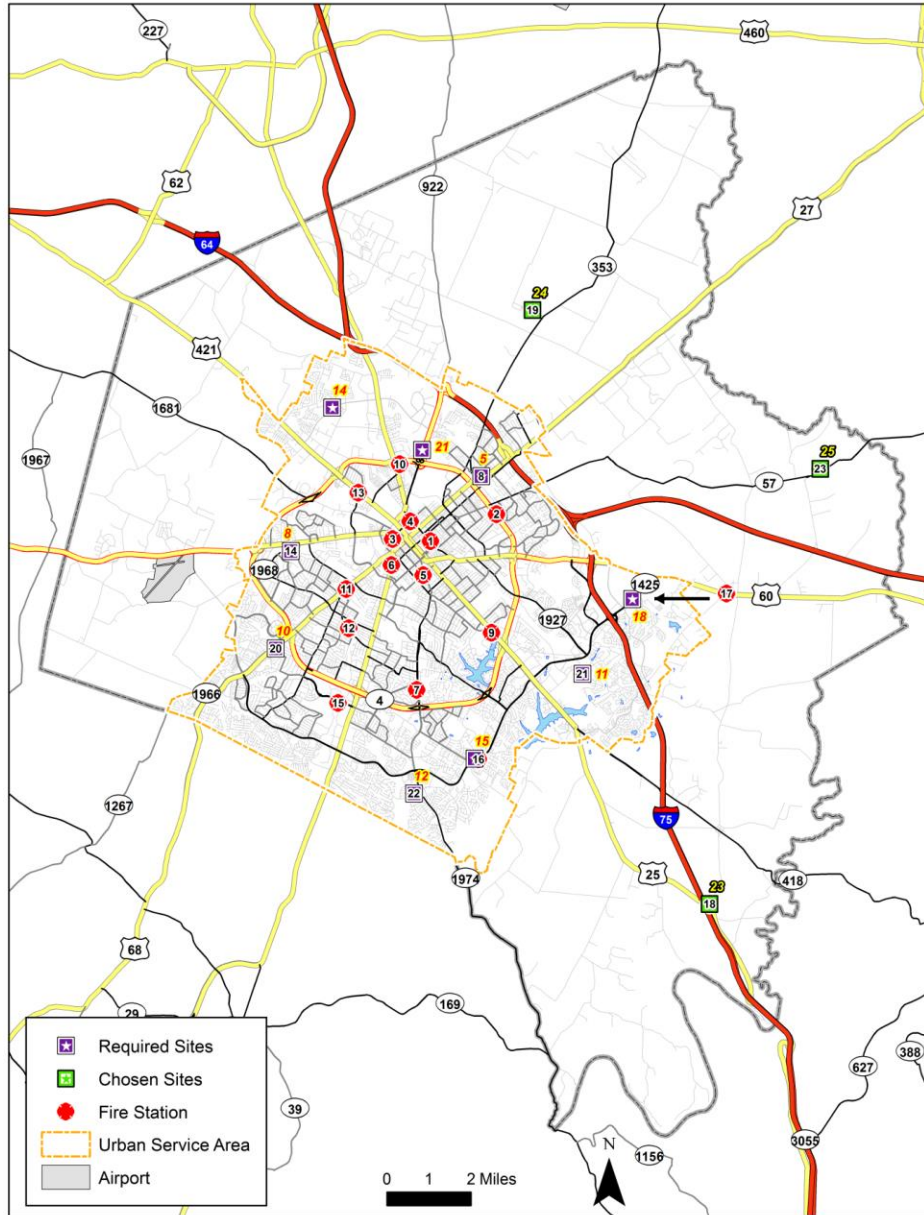
# Final Urban Service Area Sites

- 11 existing stations
- 3 planned stations
- 2 relocated stations
- 1 new station
  
- Total 17



# Final Rural Service Area Sites

- 9 existing stations
- 2 planned stations
- 1 relocated stations
  
- Total 12



# Facility Recommendations

## 1. Fire Headquarters

Immediate issues – HVAC

Relocation of administrative functions to new facility

## 2. Fire Investigations

Immediate needs - HVAC, roof/wall damage, structural integrity

Replace by 12/2020

## 3. Facilities Maintenance

Conduct structural integrity assessment to assure serviceability

Immediate issues - HVAC, roof repair, interior damage, mildew/mold

## 4. Fleet Maintenance

Replace/relocate to a larger safer more adequate facility

Immediate Issues - Roof & gutter repair and related interior damage

# Facility Recommendations

## 5. Dispatch Building

Remodel to accommodate additional office space after 911 center transferred

## 6. Training Facility

Replace w/ modern multipurpose facility to meet functional & safety needs  
Immediate needs - structural, shower/locker, ventilation & floor drainage

## 7. All Facilities

Develop plan to implement recommended related needs, including alerting systems, environmental, emergency power, station egress, locker/bath & building code compliance and replace or remodel per schedule

# EMS Recommendations

1. Implement enhanced EMS public education for 9-1-1 calls, CPR & AED training for public
2. Take action to enhance utilization of AEDs in Lexington
3. Encourage ECU crews to determine need for lights and siren use for hospital transports
4. Implement Medical Dispatch Priority System for EMS dispatch assignments in the new center
5. Conduct an assessment of the efficiency of Fire Department EMS services
6. Implement a comprehensive EMS deployment, performance and outcomes data system
7. The Medical Director and Fire Chief should explore implementing Community Paramedicine