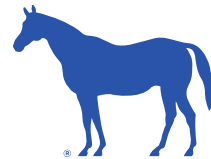


STREET TASK FORCE: BIKE LANE ORDINANCE

Alyssa McKenzie, 10th District Legislative Aide

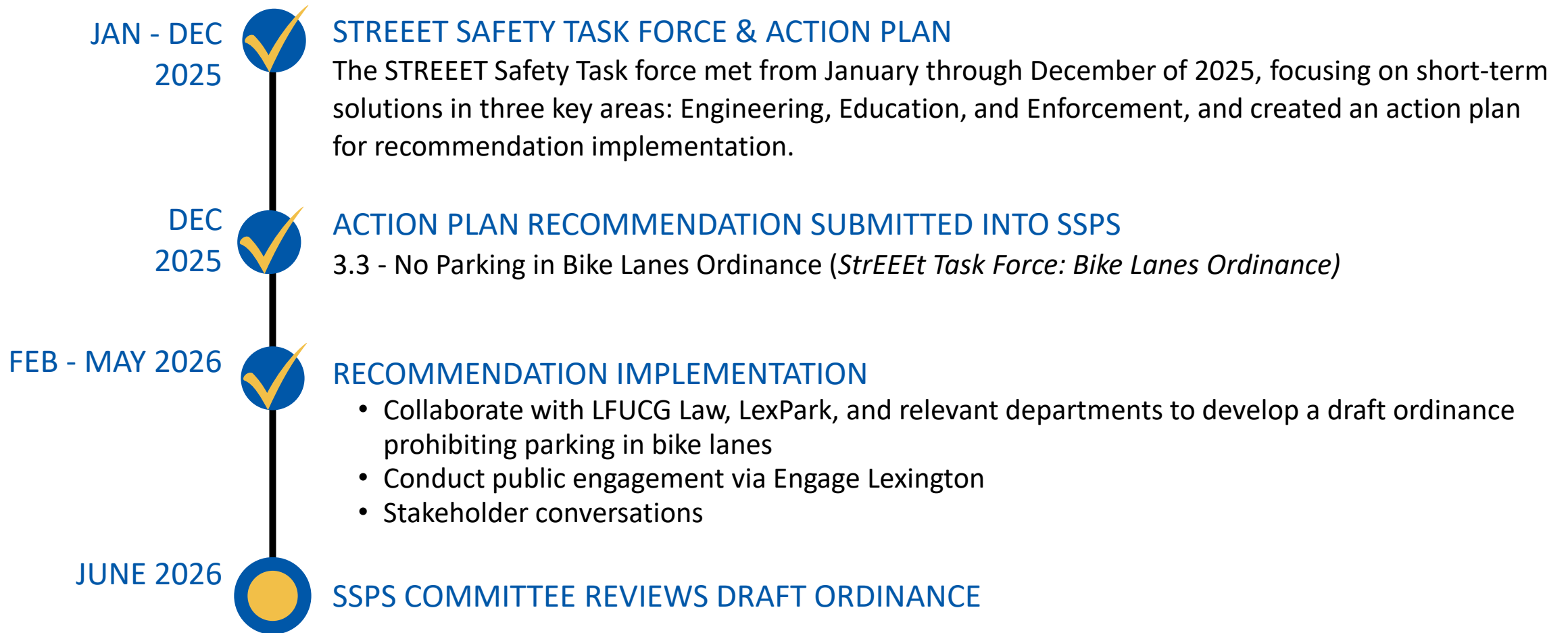
Social Services & Public Safety

June 9, 2026



LEXINGTON

CONTEXT & TIMELINE



BY THE NUMBERS

BICYCLE COLLISIONS IN FAYETTE COUNTY

2020 - 2025

205

TOTAL COLLISIONS WITH INJURY

13

SERIOUS INJURIES

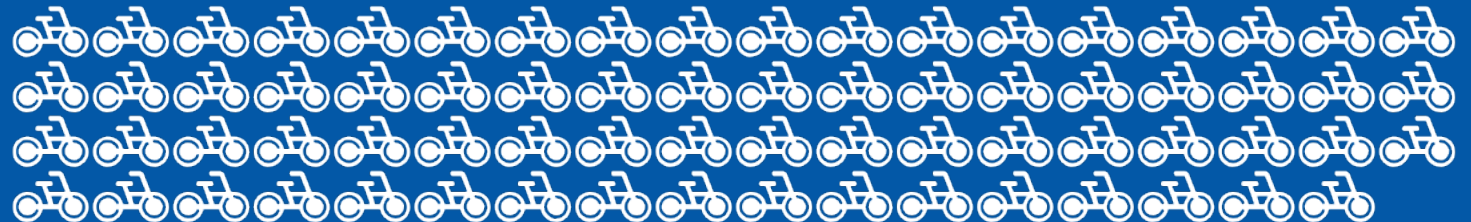
9

COLLISION WITH FATALITY

2025

71

TOTAL COLLISIONS WITH INJURY



3

SERIOUS INJURIES

1

COLLISION WITH FATALITY

KSP Collision Data, The League of American Bicyclists

WHAT WE HEARD

“ I was in an accident caused by a driver pulling over and suddenly stopping in the bike lane in front of me. ”

BICYCLE LANES

GENERAL DEFINITION:

A portion of the roadway that has been designated by striping, signage, or pavement markings for the preferential or exclusive use of bicyclists.



COMPARABLE CITIES



[Pittsburgh, PA](#)

Enforcement: Dept. of Mobility & Infrastructure, Parking Authority, Parking Enforcement Officers

Ordinance Language: Motor vehicles may not block the bicycle lane and must yield to bicyclists before entering or crossing it.



[Cincinnati, OH](#)

Enforcement: Parking Enforcement Officers, Parking Violations Bureau, Police Non-Emergency

Ordinance Language: No person may stand or park a vehicle on an on-street path or lane designated for exclusive bicycle use.



[Houston, TX](#)

Enforcement: Parking Authority

Ordinance Language: No Parking in Dedicated Bicycle Lane Ordinance prohibits on-street parking of motor vehicles in dedicated bicycle lanes.



[Louisville, KY](#)

Enforcement: Parking Authority & Code Enforcement

Ordinance Language: Prohibits stopping or parking “within a designated bikeway.”

CURRENT ORDINANCE

SEC. 18-119. STOPPING, STANDING, OR PARKING PROHIBITED

No person shall stop, stand or park a vehicle except when necessary to avoid conflict with other traffic or in compliance with law or the directions of a police officer or traffic-control device, in any of the following places:

(1) - (14)

- Driveways, Sidewalks, Intersections
- Crosswalks & Crosswalks at Intersections
- Fire Hydrants & Fire Station Entrances
- Flashing Beacon, Stop Sign, Traffic Control Signal
- Park Areas, Bridges, Street Excavation
- Roadway Side of Stopped Vehicles
- No Parking Signs & Yellow Curbs



PROPOSED AMENDMENT

SEC. 18-119. - STOPPING, STANDING, OR PARKING PROHIBITED

(15) WITHIN A BICYCLE LANE:

Adds Definitions:

- (1) Bicycle lane
- (2) Bicycle
- (3) Bicyclist

Includes Exemptions:

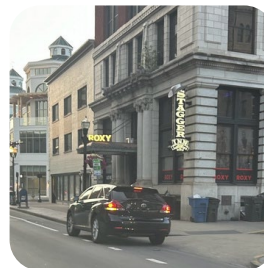
- Rideshares
- Delivery Trucks
- Buses
- Emergency Vehicles



10-Minute Limit:
Loading/Unloading
Drop-off and/or Pick-up



Yield to bicyclists & pedestrians when entering/exiting the bicycle lane



Activate Flashers - Must remain on while in the bicycle lane

ENFORCEMENT

Enforcement of the ordinance will be a joint effort between multiple agencies:

LEXPARK

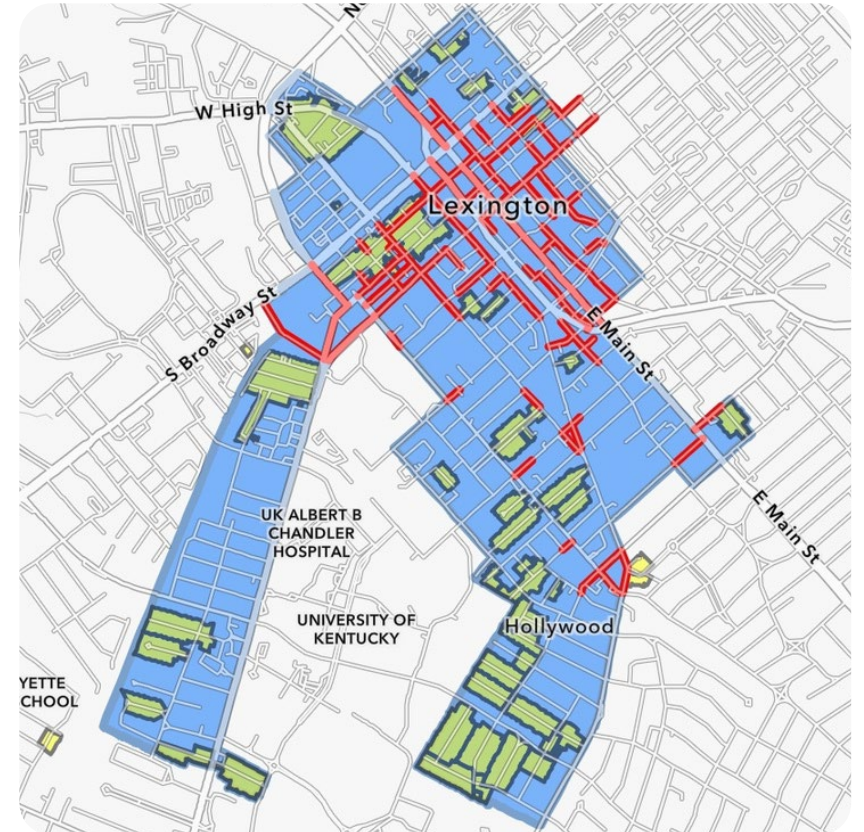
- Meters, Downtown Corridors, and Residential Parking Permits
- Full Staff: Monday - Friday, 9am - 7pm
- Additional Staff: 24/7
- Non-Moving Violation: \$50 - \$100

LEXINGTON POLICE DEPARTMENT

- Citywide
- Calls to Non-Emergency Number
- Non-Moving Violations: \$50 - \$100

OTHER ENFORCEMENT ENTITIES

- UK Police Department
- UK Transportation



WHAT WE HEARD

STAKEHOLDER CONVERSATIONS



commerce
lexington.

Lextran

Police Department

Transportation Services

visitlex

DOWNTOWN
LEXINGTON
MANAGEMENT
DISTRICT

Downtown
Lexington
Partnership

LEXPARK
lexpark.org



Ashland
Walk N Roll

Bike Walk Kentucky

BLUEGRASS
CYCLING CLUB

BROKE
SPOKE

BROOM
WAGON

Living Streets Lexington

PEDALPOWER
Since 1973

SCHELLER'S
FITNESS & CYCLING
your FITNESSPROS

PUBLIC ENGAGEMENT

ENGAGE LEXINGTON - SAFE BIKE LANES PAGE

TOP 3 SOURCES OF TRAFFIC

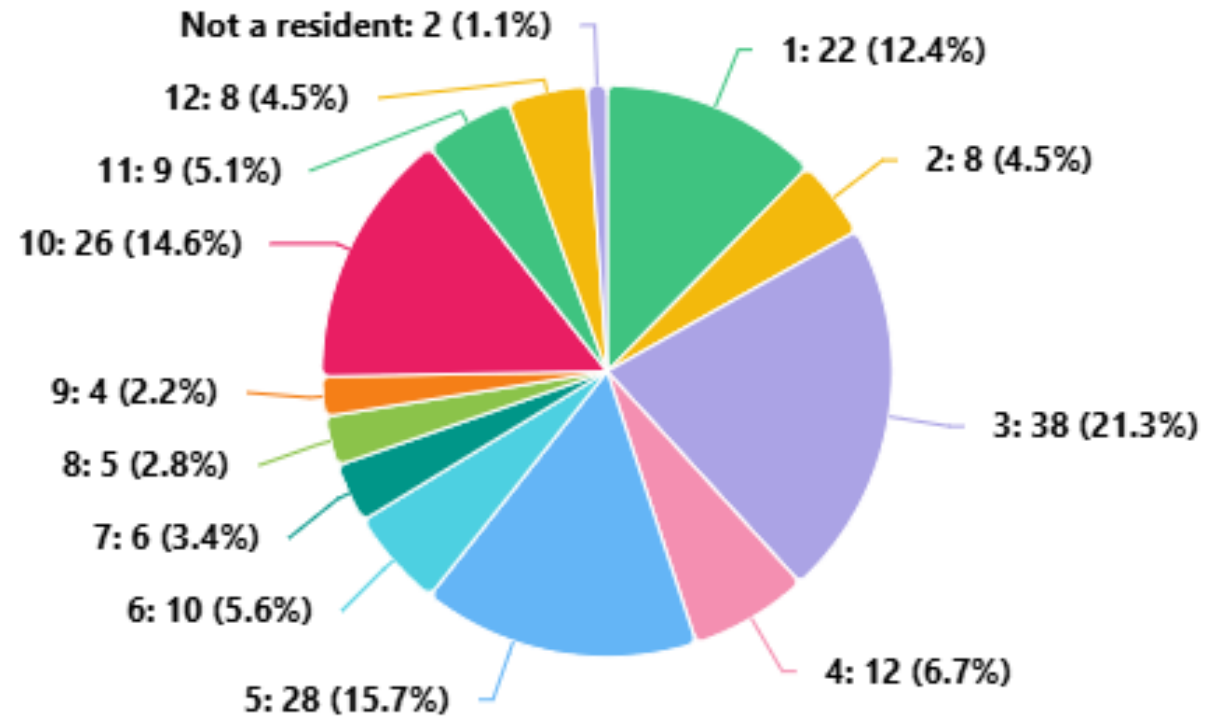
651 Direct
122 Social
91 Email

960

Page Visits

April 13, 2026 - May 31, 2026

Council District Participation



Survey Respondents

PUBLIC ENGAGEMENT

ENGAGE LEXINGTON - SAFE BIKE LANES SURVEY

178

Survey Respondents

SURVEY

April 13, 2026 - May 15, 2026

11 Questions

Single Response &

Open Ended Questions

86%

Support a Bike Lane Ordinance

TYPES OF ENFORCEMENT

40%

Ticketing

29%

Towing

23%

Warnings

8%

Other

78%

Felt Unsafe in a Bike Lane

TOP 5 LOCATIONS

Fourth Street

Jefferson Street

Chinoe Road

Main Street / E Main Street

Euclid Avenue

WHAT WE HEARD

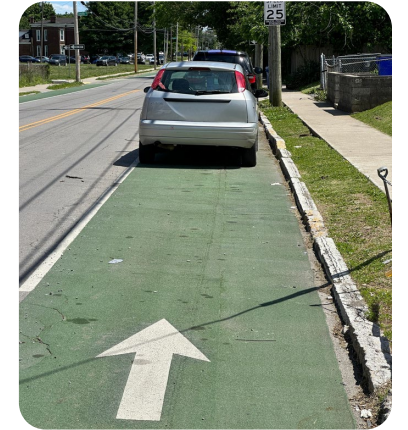
“ —
Biking in Lexington is dangerous, in part because bike lanes are rarely respected. This would be a first step toward making cycling in Lexington safer.

— ”

TAKEAWAYS

CONCERNS

- Ordinance Exceptions
- Bike Lane Infrastructure
- Maintenance of Bike Lanes
- Removing Parking
- Enforcement



OPPORTUNITIES

- Communication with Residents
- Increased Enforcement
- Implementation Protected Bike Infrastructure
- Designated Delivery & Loading Zones
- Signage



NEXT STEPS

TODAY'S MEETING

- Review of Draft Language
- Approval of Language
- Report Out at August 11 Council Work Session

VISIT ENGAGE LEXINGTON

- See Lexington's Bike Trails
- Visit Bike Lane Uprising
- Review the Draft Ordinance
- Read the StrEEEt Safety Task Force Action Plan



Questions?



LEXINGTON