

STATE OF OUR WATERSHEDS

MS4 Annual Training
November 14, 2017



LEXINGTON

ACRONYMS and SYMBOLS

KDOW: Kentucky Division of Water

MS4: Municipal Separate Storm Sewer System

MP: Mile Point – distance along a stream measured from the mouth

RM: River Mile – location along a stream, measured from the mouth, where a feature,
such as a tributary joins the mainstem of the stream

OSRW: Outstanding State Resource Water

TMDL: Total Maximum Daily Load – a pollution diet for a waterbody

UT: Unnamed Tributary

WFMP: Watershed-Focused Monitoring Program

WSP: Watershed Plan

ACRONYMS and SYMBOLS



PCR: Primary Contact Recreation – suitable for swimming, full submersion



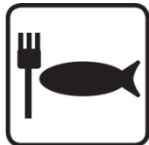
SCR: Secondary Contact Recreation – suitable for wading, splashing



WAH: Warmwater Aquatic Habitat – suitable water quality and habitat to support fish and bug populations



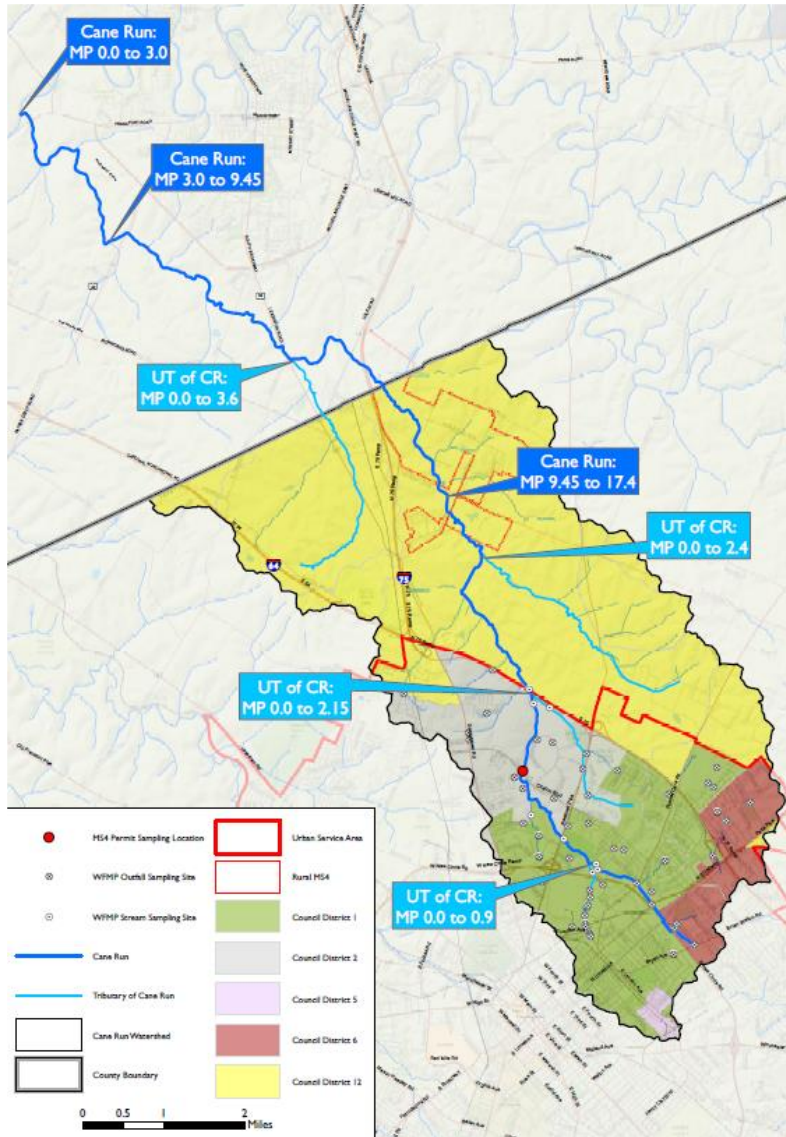
DWS: Domestic Water Supply – suitable quantity and source quality to meet drinking water standards once treated



FC: Fish Consumption – suitable for humans to eat game fish from waterbody



WATERSHED: CANE RUN



Council Districts: 1, 2, 5, 6, 12

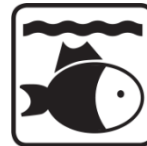
Impairment Status:



All Segments and UTs
Not Supporting



Cane Run MP 9.45 to 17.4
Not Supporting



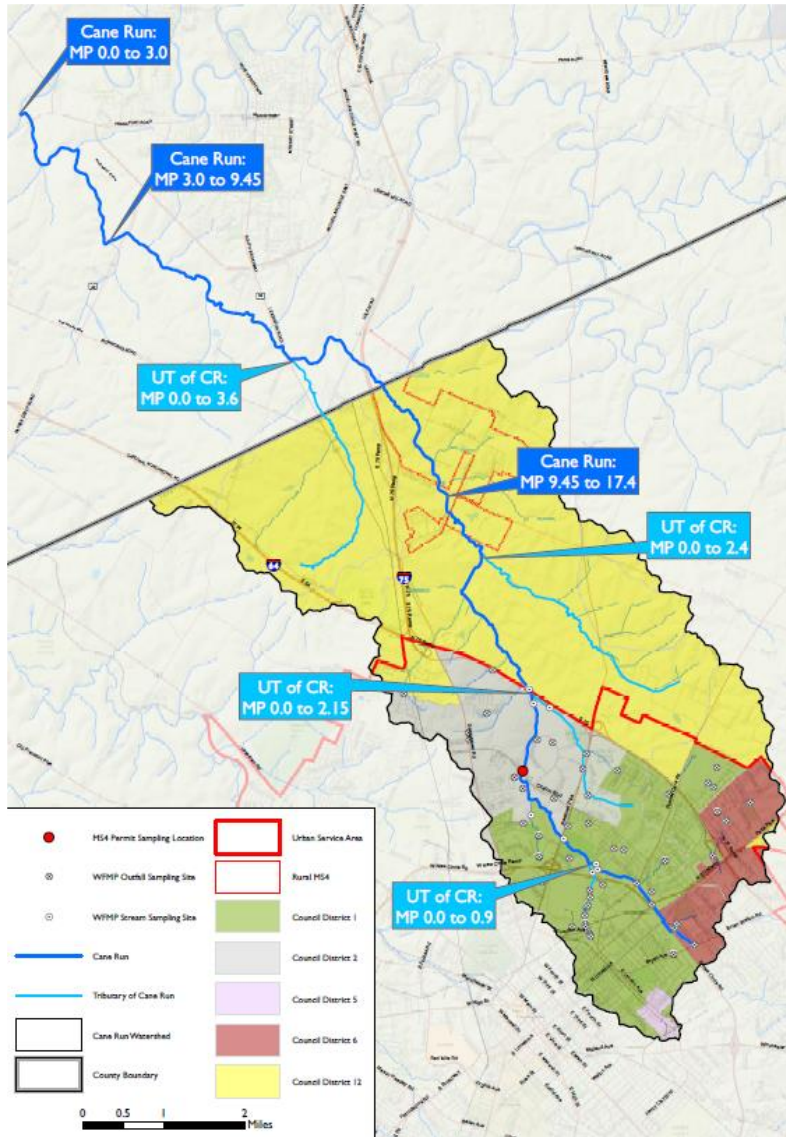
All CR Segments and 3 of 4 UTs
Not Supporting



Causes of Impairments: Pathogens, Sediment,
Dissolved Solids, Nutrients, Sewage

Sources of Impairments: Agriculture, Roads,
Urban Stormwater, Point Sources, Landfills

WATERSHED: CANE RUN



Approved TMDL: Yes, for Fecal Coliform

Watershed Group: Yes, Cane Run Watershed Council

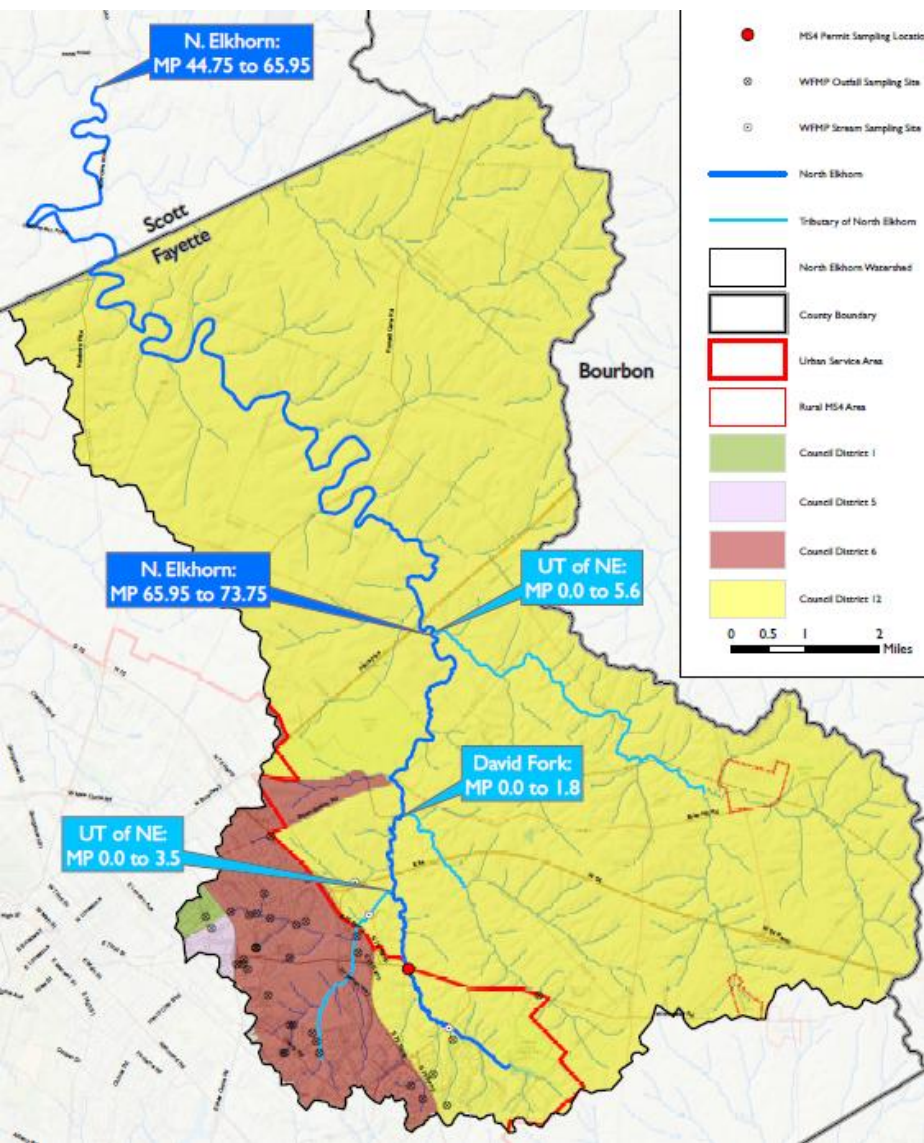
Approved Watershed Plan: Yes, but being expanded to include LFUCG's MS4 and Scott County

WFMP Year: 2017

Volunteer Support Participants: BCTC, KRWW, Lexmark, UK Coldstream Research Campus, UK CAFE, GMWSS



WATERSHED: NORTH ELKHORN



Council Districts: 1, 5, 6, 7, 12

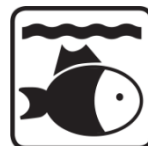
Impairment Status:



Not Assessed



1 Segment, David Fork, and 1 UT
Not Supporting



North Elkhorn MP 44.75 to 65.95

Fully Supporting

North Elkhorn MP 65.95 to 73.75 / 1UT

Partially Supporting

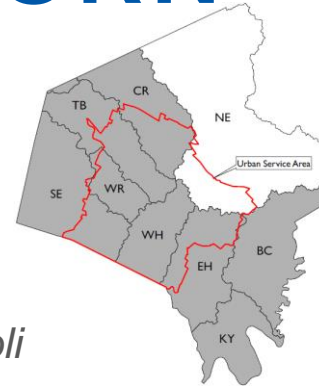
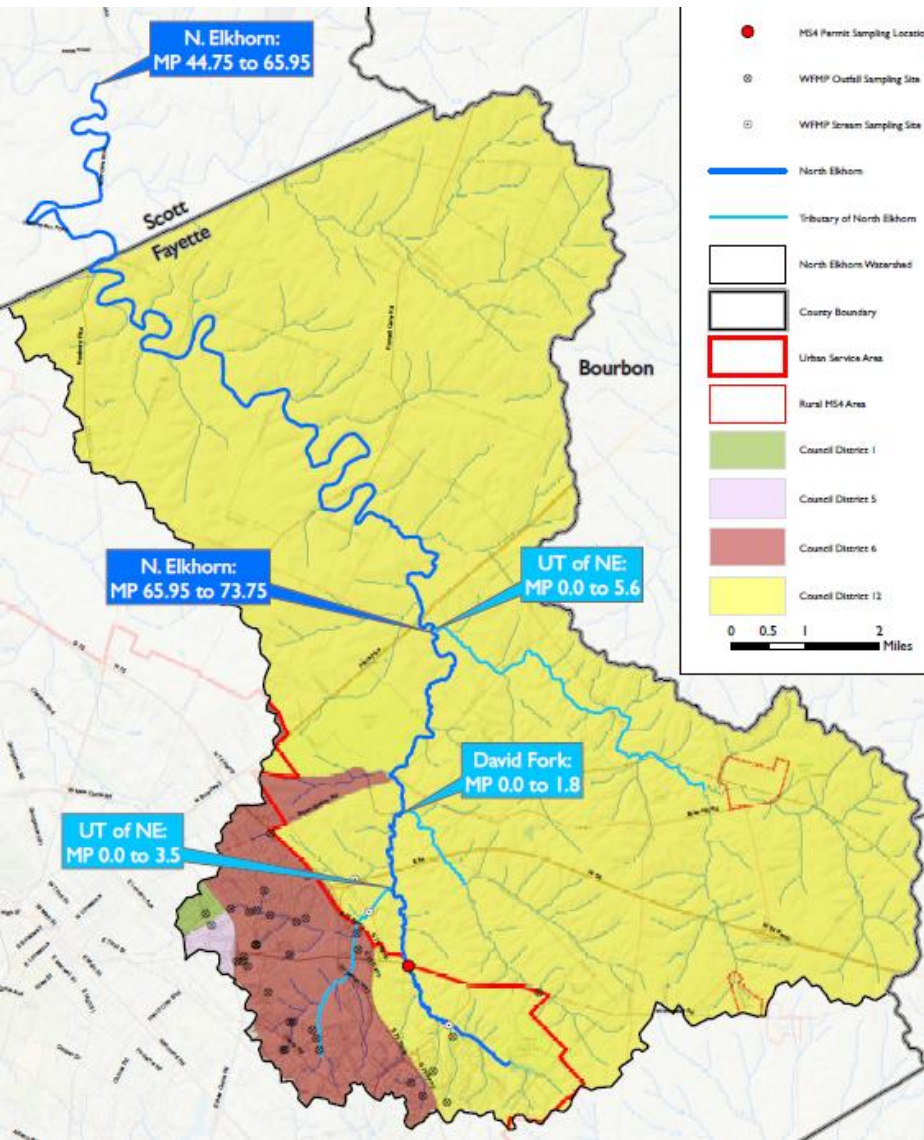
Causes of Impairments: Pathogens, Habitat, Substrate, Sediment, Dissolved Solids, Nutrients, Sewage

Sources of Impairments: All except Landfills





WATERSHED: NORTH ELKHORN



Approved TMDL: Yes, for *E. Coli*

Watershed Group: No

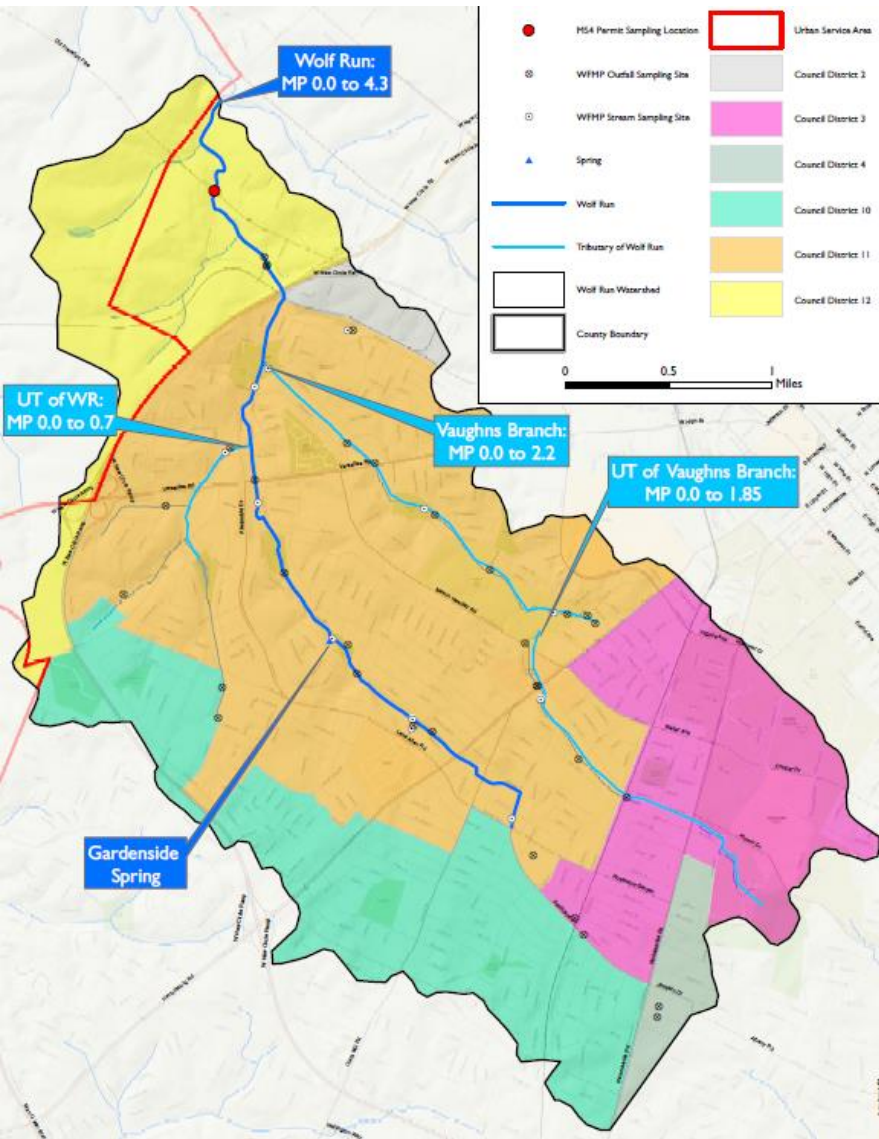
Approved Watershed Plan: No

WFMP Year: 2022

Volunteer Support Participants: To Be Determined

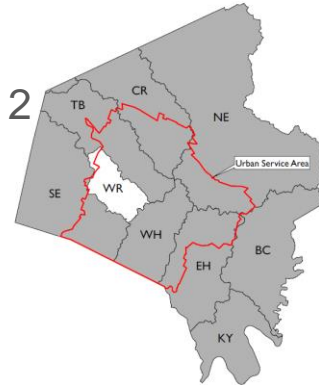


WATERSHED: WOLF RUN



Council Districts: 2, 3, 4, 10, 11, 12

Impairment Status:



Wolf Run, 2 UTs, 1 Spring

Partially Supporting

Vaughns Branch

Not Supporting

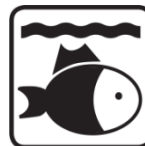


Wolf Run, 2 UTs

Partially Supporting

Vaughns Branch

Not Supporting



UT of Wolf Run

Fully Supporting

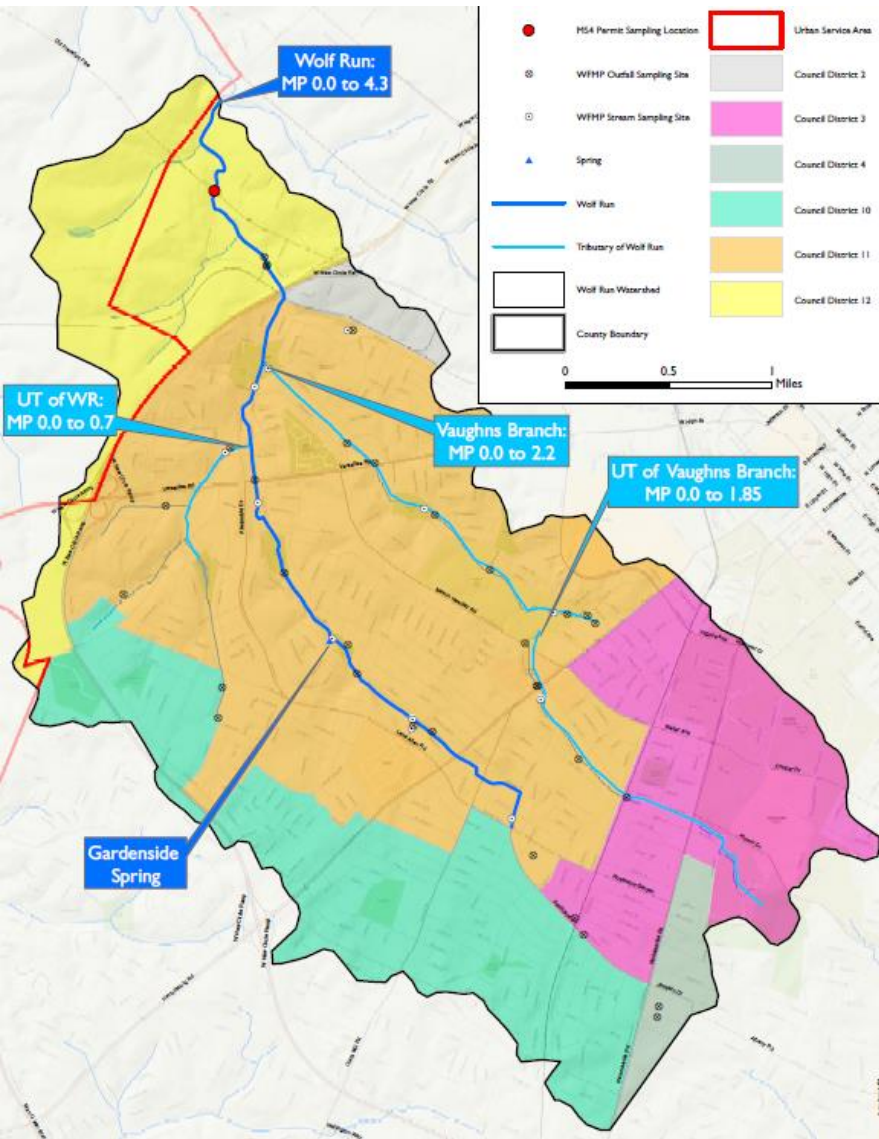
Vaughns Branch

Partially Supporting

Wolf Run, UT of Vaughns Branch

Not Supporting

WATERSHED: WOLF RUN



Causes of Impairments: Pathogens,
Dissolved Solids, Nutrients

Sources of Impairments: Habitat,
Channelization, Riparian, Urban Stormwater,
Point Sources

Approved TMDL: Yes, for Fecal Coliform
and *E. Coli*

Watershed Group: Yes, Friends of Wolf Run

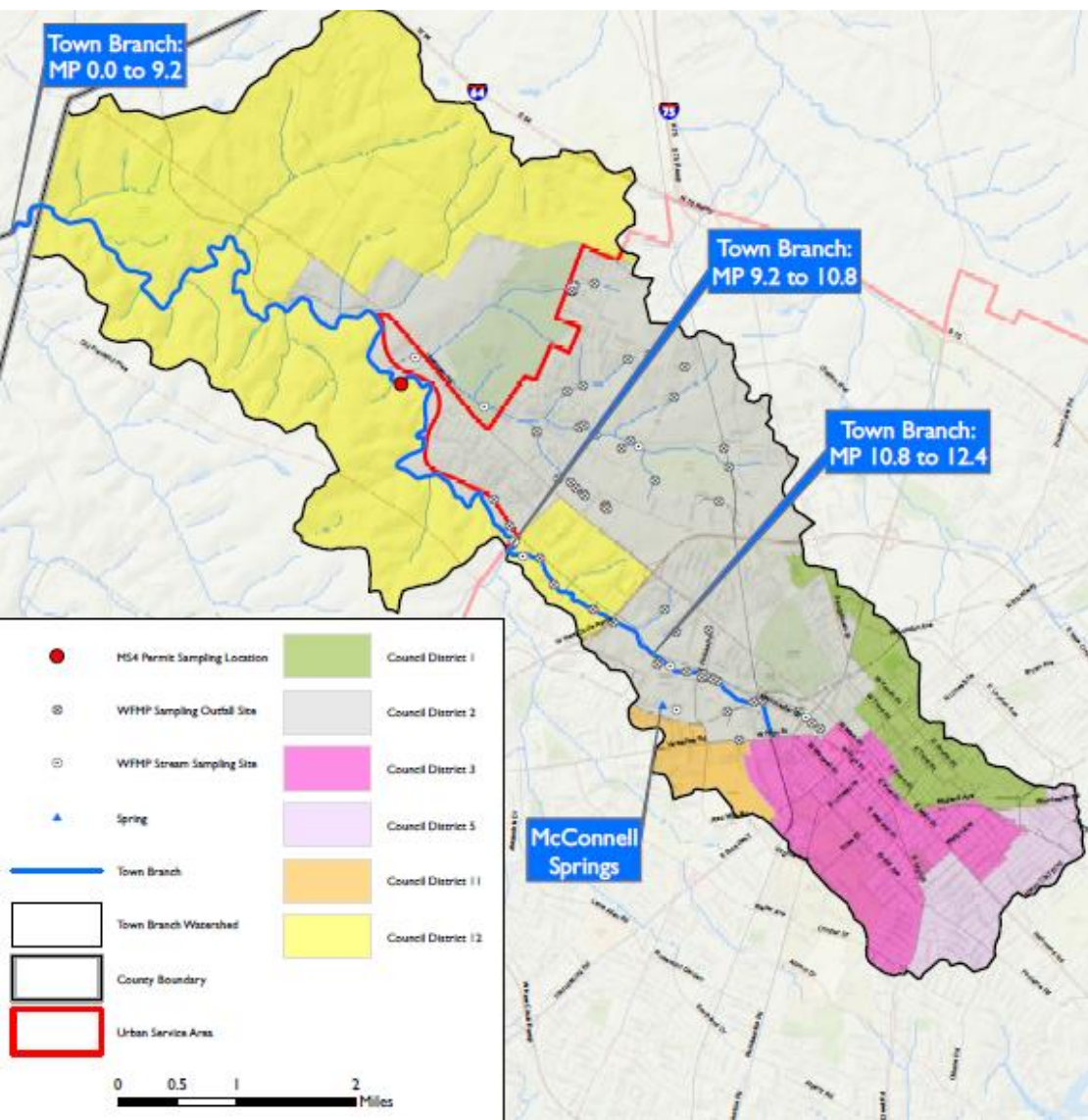
Approved Watershed Plan: Yes

WFMP Year: 2023

Volunteer Support Participants: To Be
Determined



WATERSHED: TOWN BRANCH



Council Districts:

1, 2, 3, 5, 11, 12

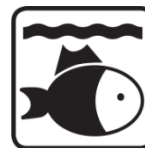
Impairment Status:



All 3 Segments, 1 Spring
Not Supporting



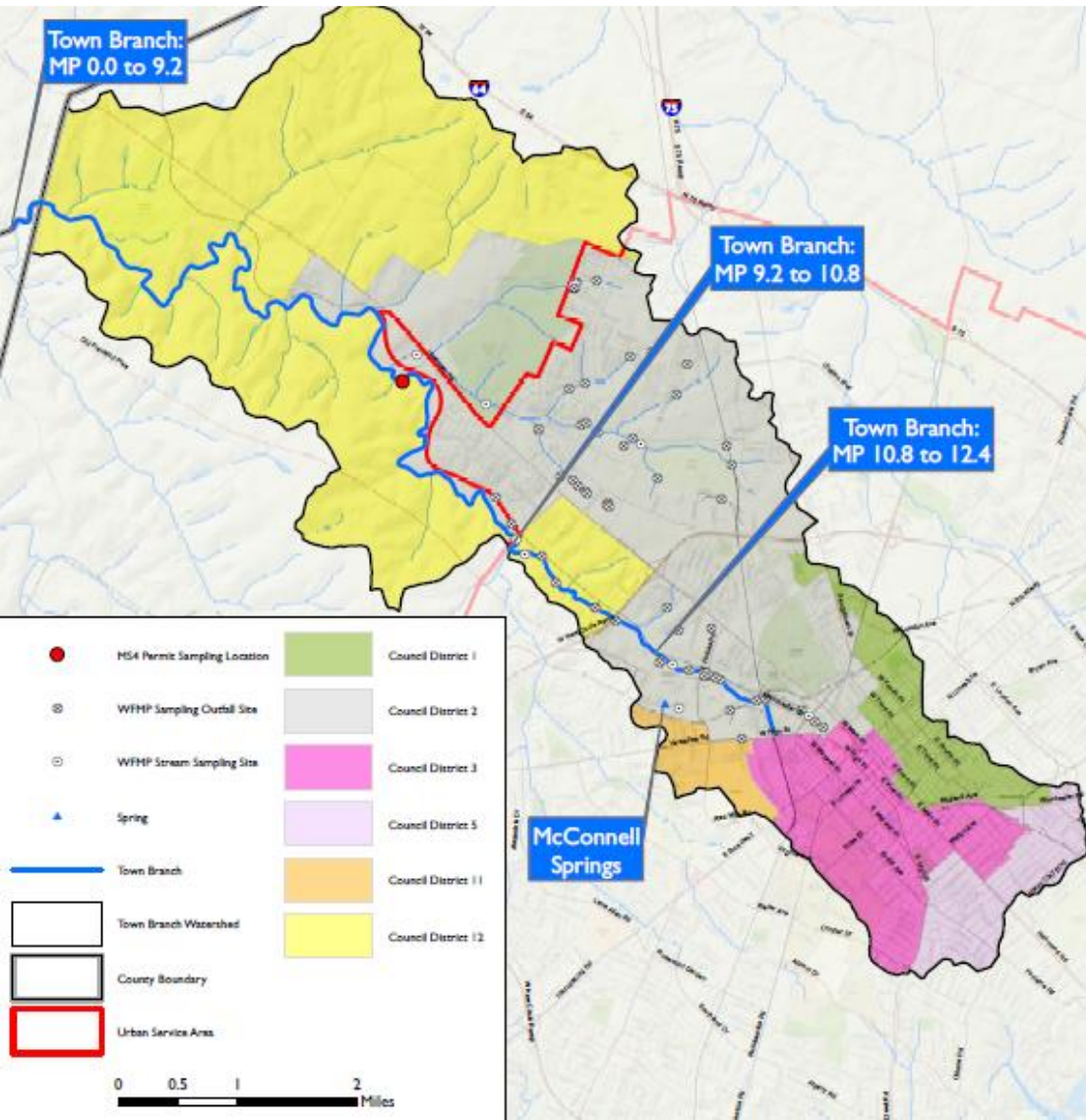
Town Branch MP 10.8 to 12.4
Not Supporting
McConnell Springs
Fully Supporting



2 Segments
Partially Supporting
Town Branch MP 10.8 to 12.4
Not Supporting



WATERSHED: TOWN BRANCH



Causes of Impairments:

Pathogens, Flow, Sediment,
Dissolved Solids, Nutrients, Sewage

Sources of Impairments: Riparian,
Urban Stormwater, Point Sources,
Unknown

Approved TMDL: Yes, for Fecal
Coliform and *E. Coli*

Watershed Group: Yes, Friends of
McConnell Springs

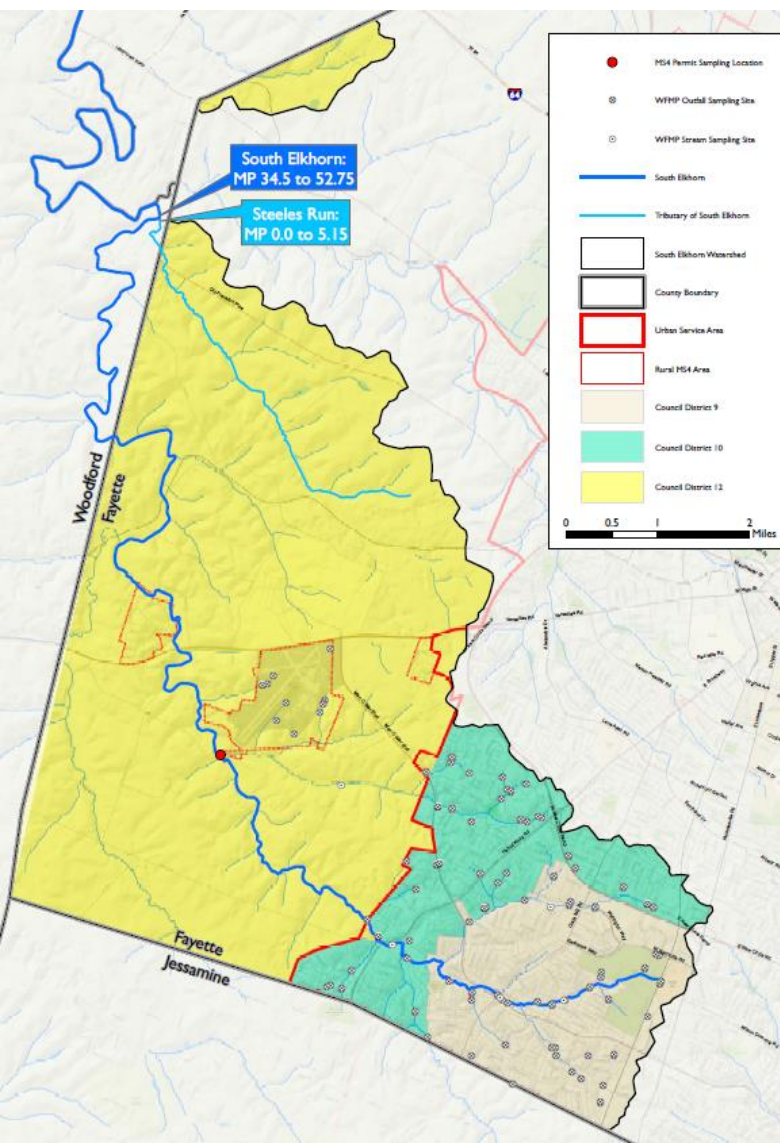
Approved Watershed Plan: No

WFMP Year: 2021

Volunteer Support Participants: TBD



WATERSHED: SOUTH ELKHORN



Council Districts: 4, 9, 10, 12

Impairment Status:



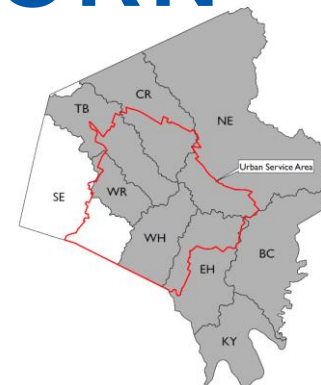
1 Segment and 1 Tributary
Not Supporting



Steeles Run
Not Supporting



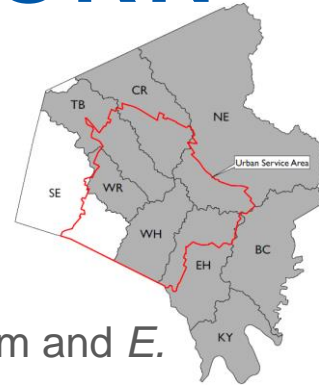
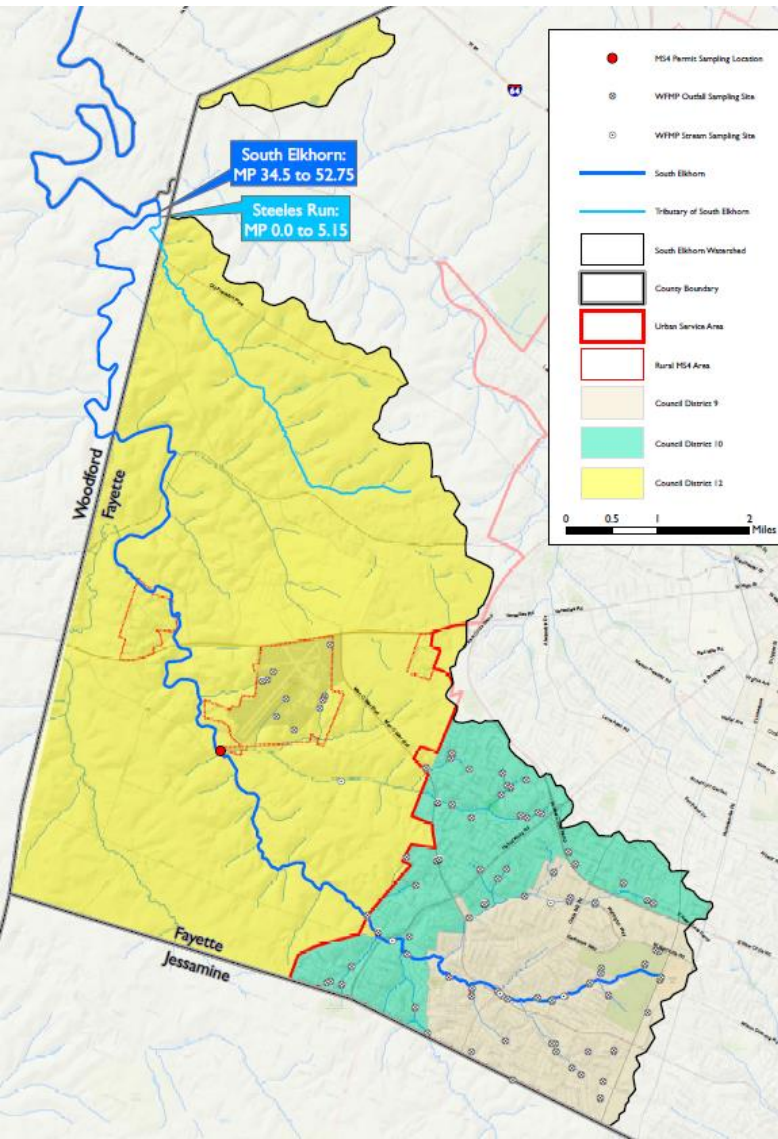
Steeles Run – OSRW
Fully Supporting
South Elkhorn
Partially Supporting



Causes of Impairments: Pathogens, Chlorine, Habitat, Sediment, Dissolved Solids, Nutrients, Sewage

Sources of Impairments: Agriculture, Habitat, Riparian, Roads, Unknown

WATERSHED: SOUTH ELKHORN



Approved TMDL: Yes, for Fecal Coliform and *E. Coli*

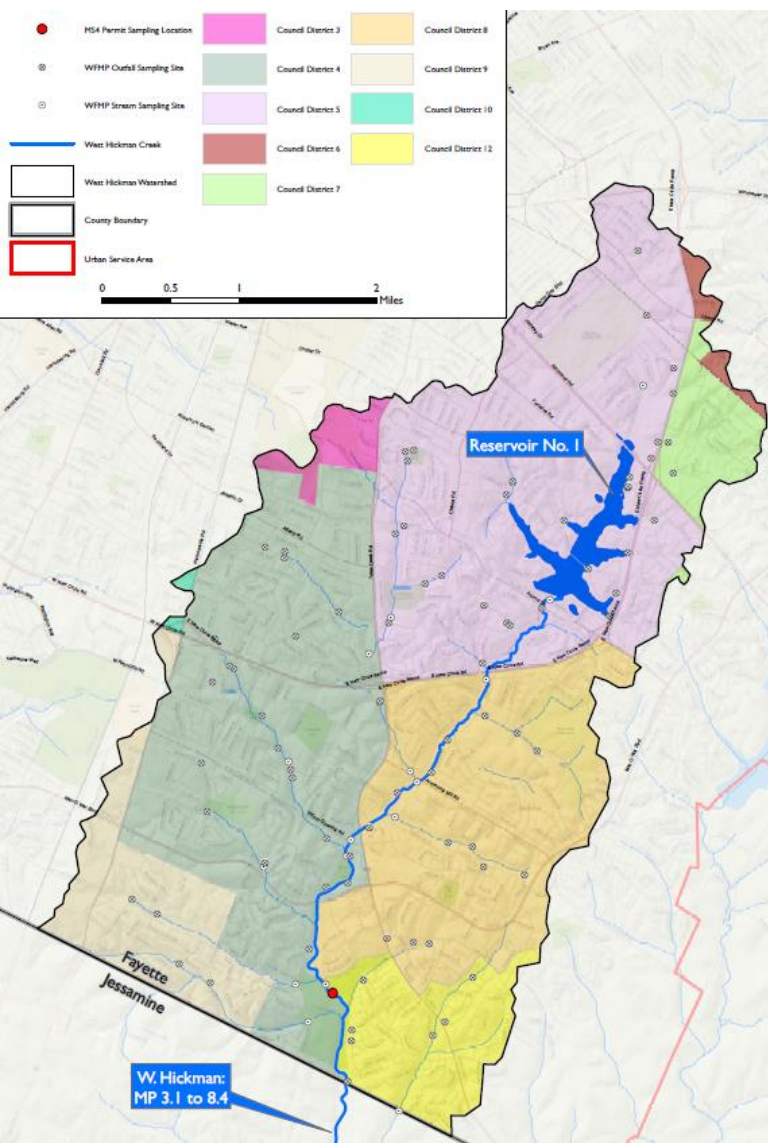
Watershed Group: Yes, Neighbors United for South Elkhorn Creek

Approved Watershed Plan: No, but LFUCG has applied for a 319(h) grant to develop a WSP

WFMP Year: 2018

Volunteer Support Participants: BCTC, KRWW, UK CAFE, Bluegrass Airport

WATERSHED: WEST HICKMAN



Council Districts: 3, 4, 5, 6, 7, 8, 9, 10, 12

Impairment Status:



West Hickman MP 0.0 to 3.1

Partially Supporting

West Hickman MP 3.1 to 8.4

Not Supporting



Not Assessed



All Segments

Partially Supporting

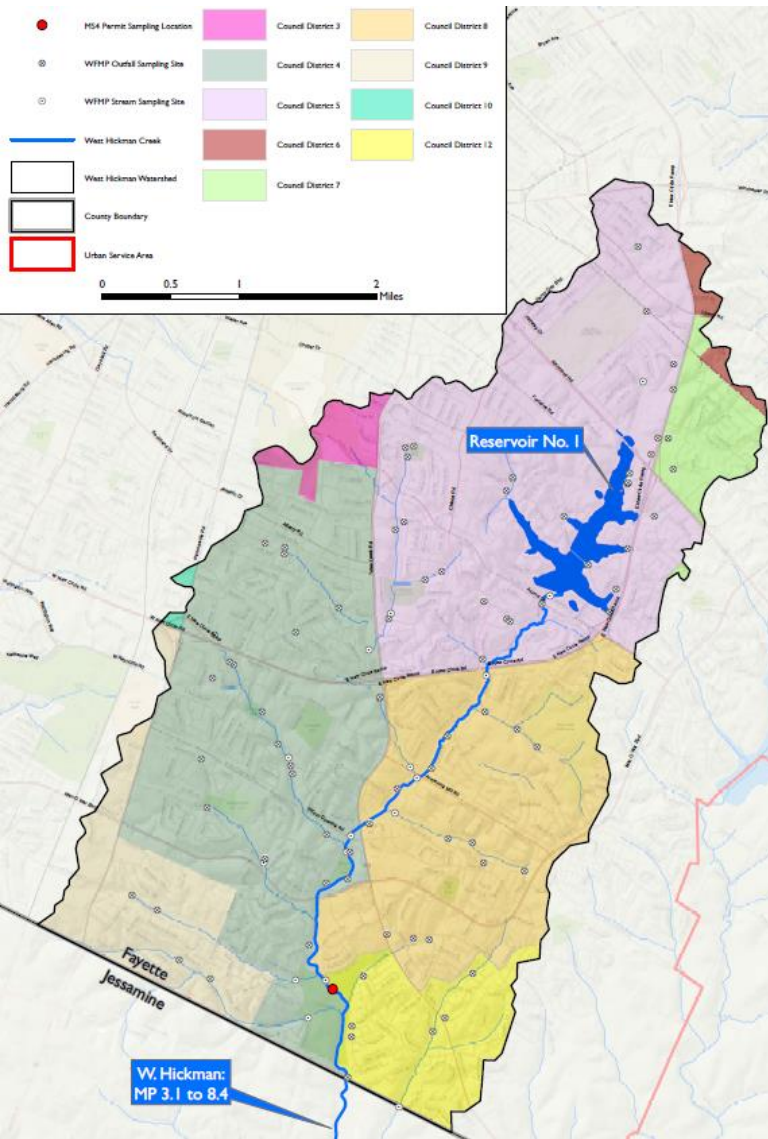


Reservoir No. 1

Fully Supporting



WATERSHED: WEST HICKMAN



Causes of Impairments: Pathogens,
Sediment, Dissolved Solids, Nutrients,
Sewage

Sources of Impairments: Urban
Stormwater, Point Sources

Approved TMDL: No

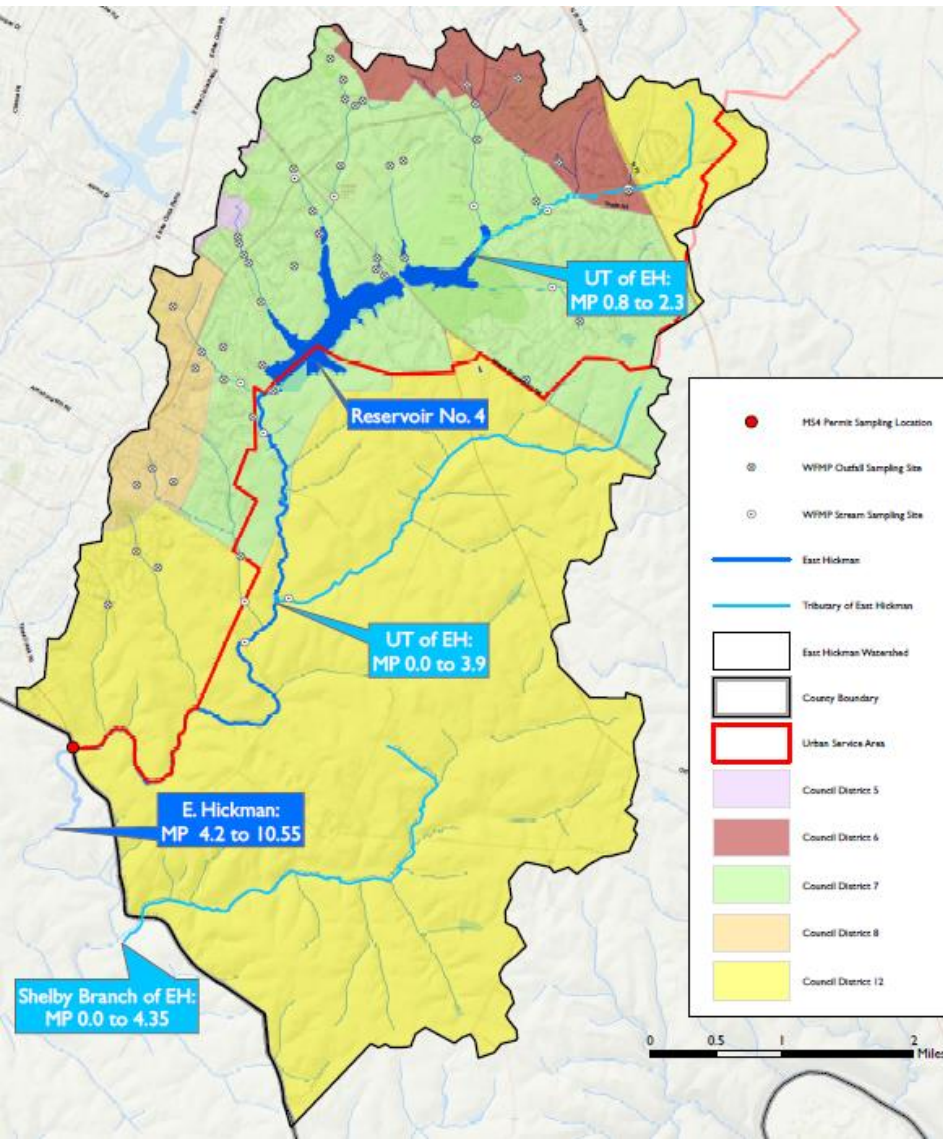
Watershed Group: Yes, West Hickman
Watershed Council is in development

Approved Watershed Plan: No

WFMP Year: 2019

Volunteer Support Participants: To Be
Determined

WATERSHED: EAST HICKMAN



Council Districts: 5, 6, 7, 8, 12

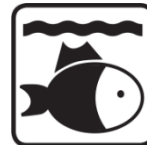
Impairment Status:



All Segments and All Tribs
Not Supporting



Not Assessed



East Hickman MP 4.2 to 10.55
Partially Supporting

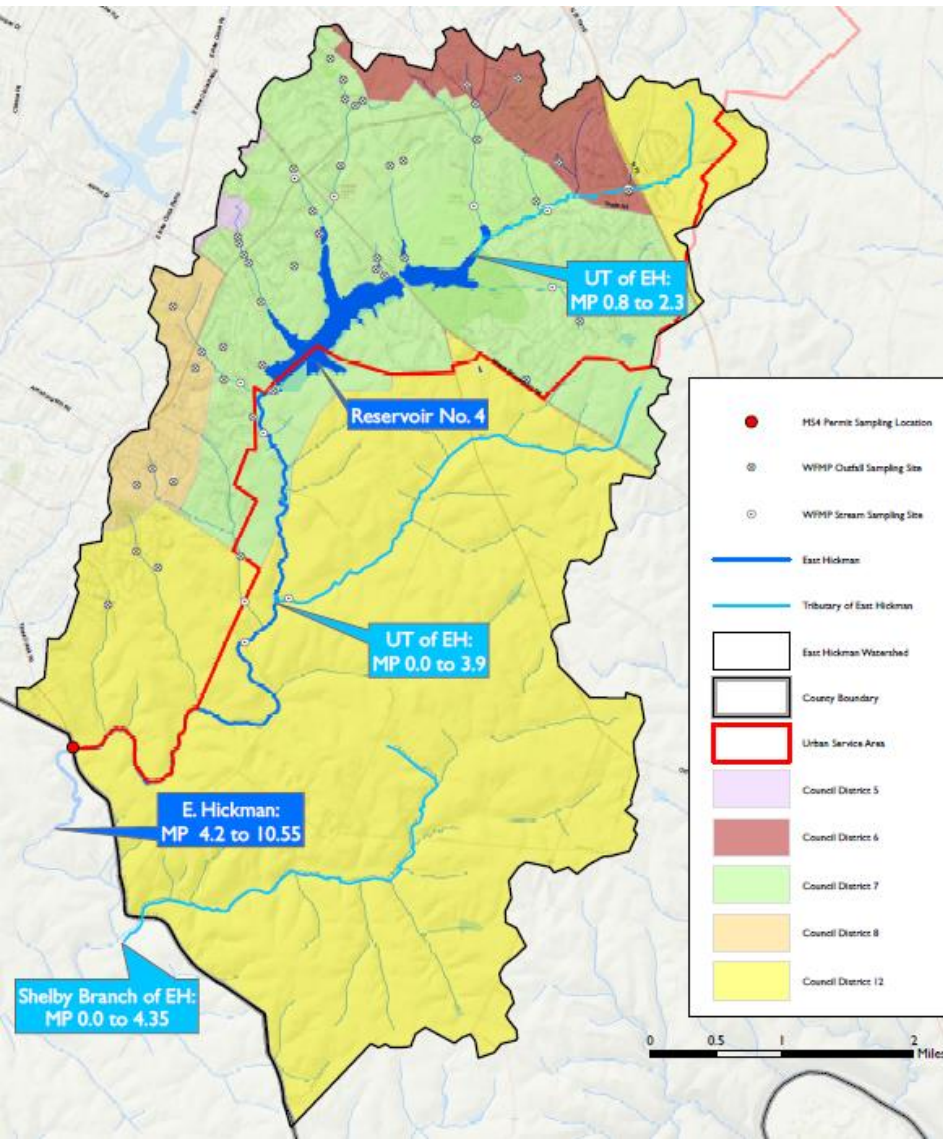


Reservoir No. 4 (Jacobson)
Fully Supporting

Causes of Impairments: Pathogens, Nutrients

Sources of Impairments: Agriculture, Urban
Stormwater

WATERSHED: EAST HICKMAN



Approved TMDL: No

Watershed Group: No

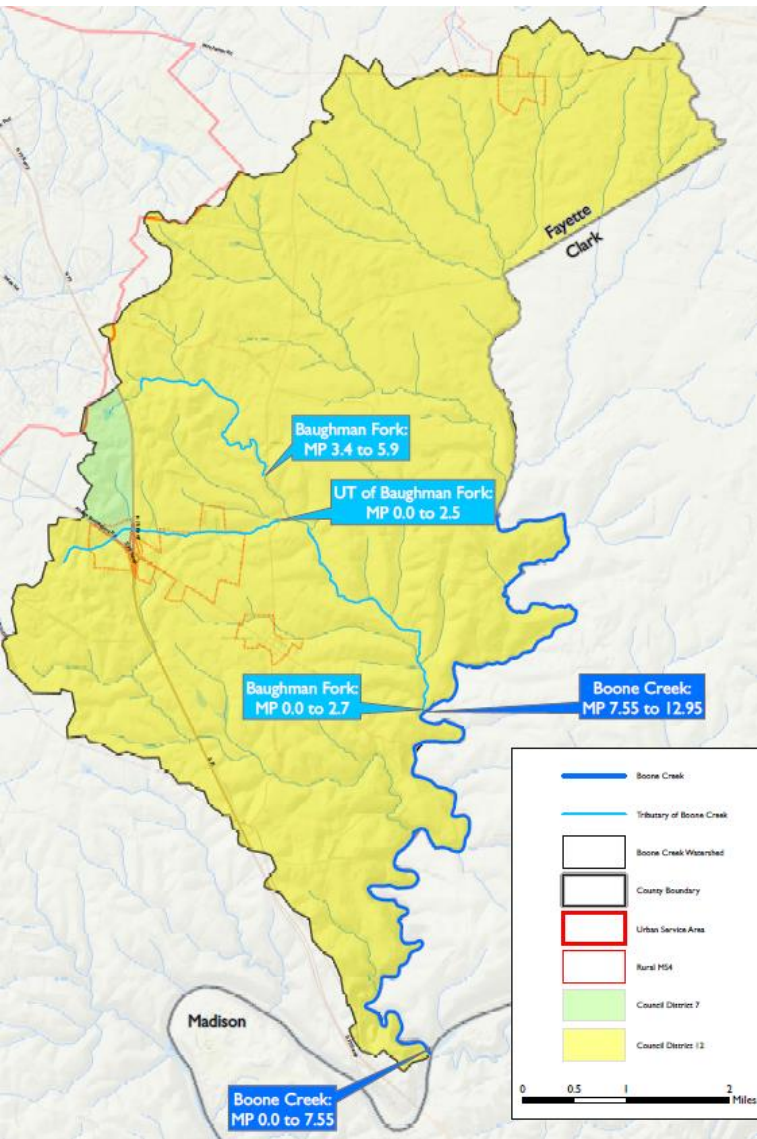
Approved Watershed Plan: No

WFMP Year: 2020

Volunteer Support Participants: To Be Determined



WATERSHED: BOONE CREEK



Council Districts: 7, 12

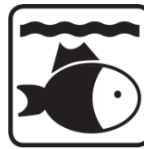
Impairment Status:



Boone Creek 7.55 to 12.95
Not Supporting

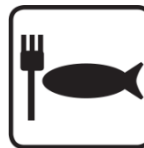


Not Assessed



1 Segment, 1 of 2 Baughman Fork Segments
Fully Supporting

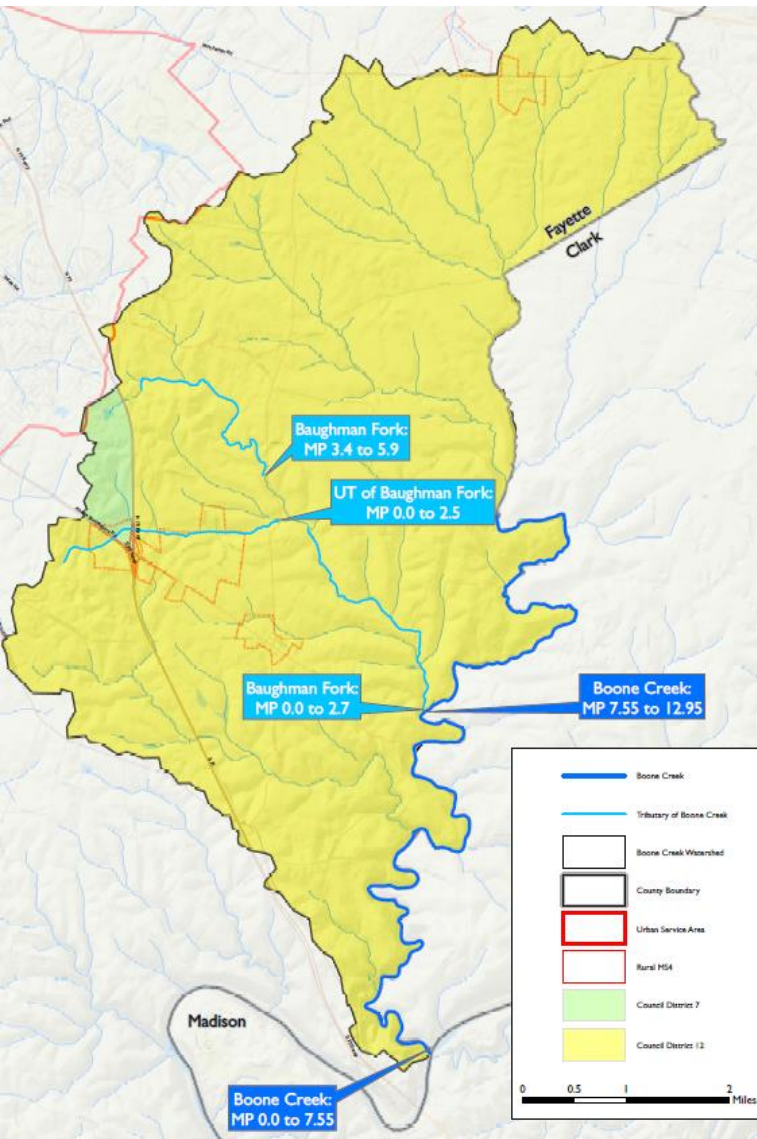
1 Segment
Partially Supporting
UT to Baughman Fork
Not Supporting



2 Baughman Fork Segments
Fully Supporting



WATERSHED: BOONE CREEK



Causes of Impairments: Pathogens, Nutrients, Sewage

Sources of Impairments: Agriculture, Point Sources, Unknown

Approved TMDL: Yes, for Organic Enrichments and Nutrients in Baughman Fork and UT of Baughman Fork

Watershed Group: No

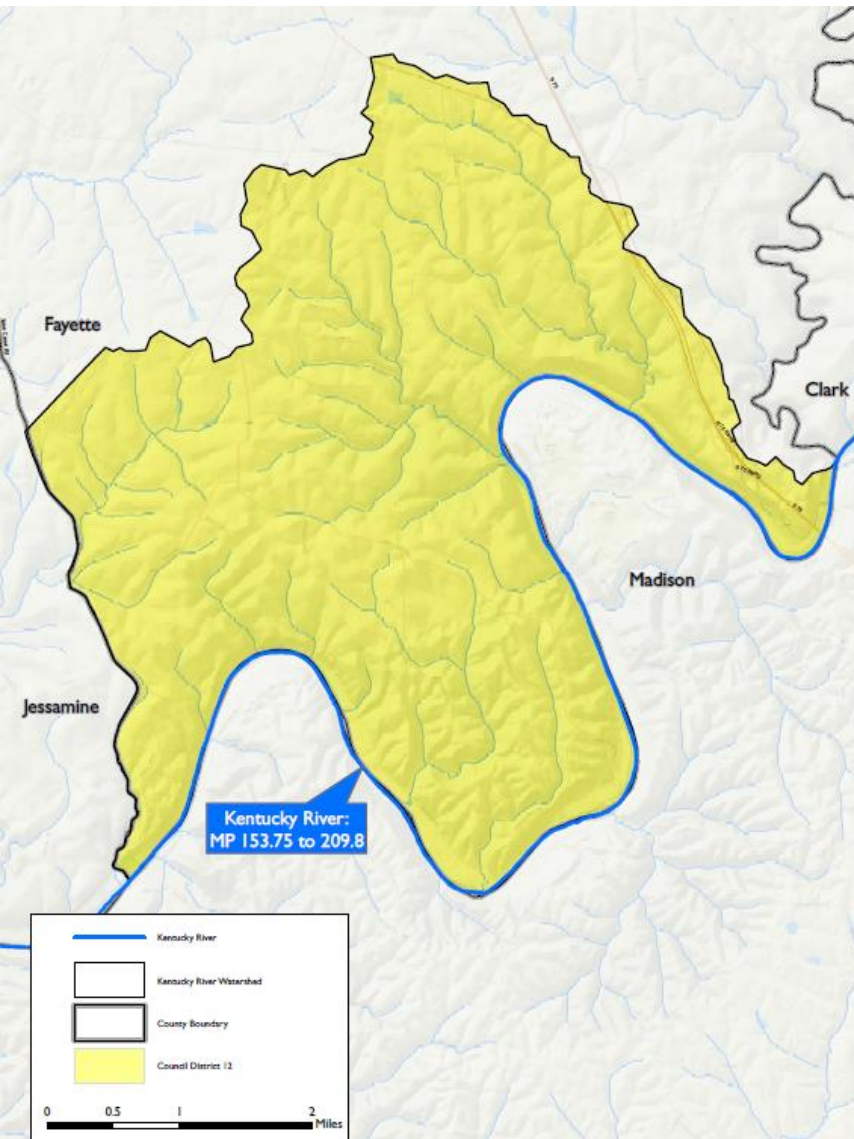
Approved Watershed Plan: No

WFMP Year: N/A

Volunteer Support Participants: N/A



WATERSHED: KENTUCKY RIVER



Council District: 12

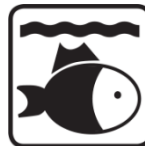
Impairment Status:



Segment
Fully Supporting



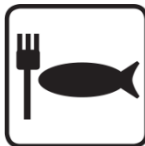
Segment
Fully Supporting



Segment
Fully Supporting



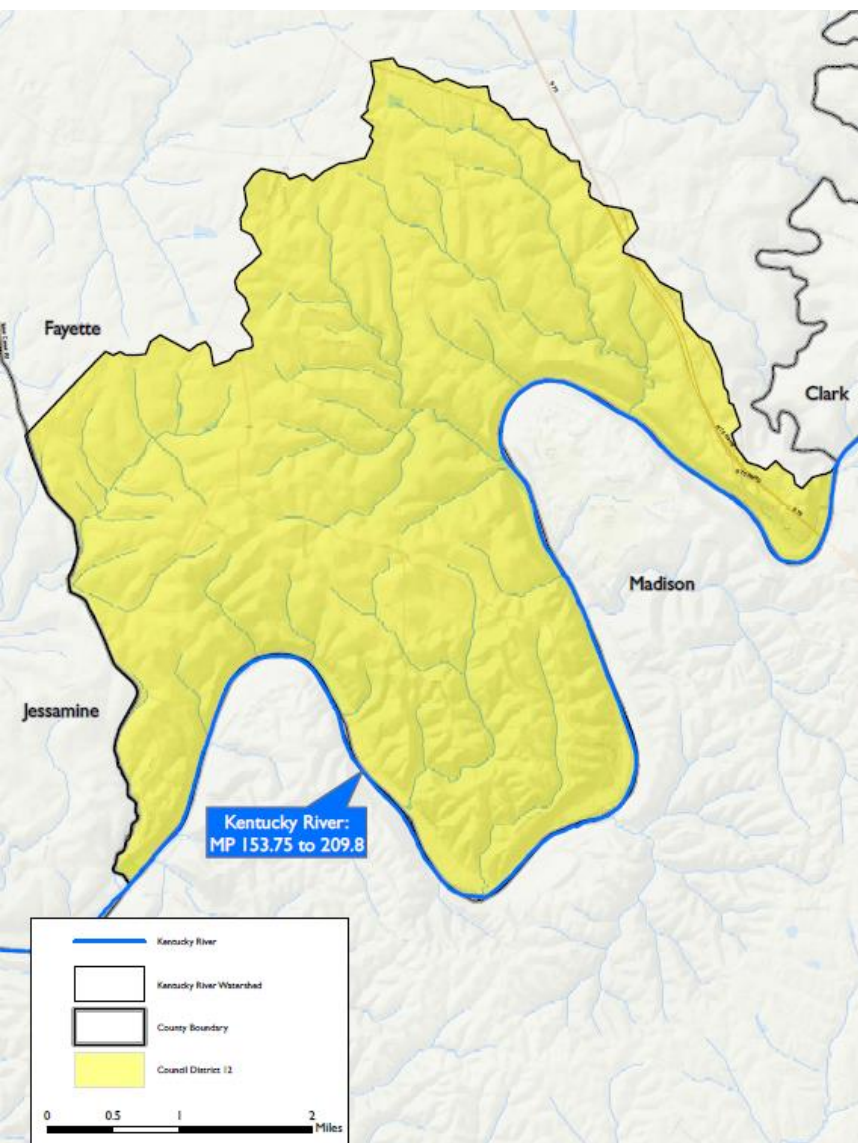
Segment
Fully Supporting



Segment
Partially Supporting



WATERSHED: KENTUCKY RIVER



Causes of Impairments: Methylmercury

Sources of Impairments: Unknown

Approved TMDL: No

Watershed Group: Yes, Kentucky River

Basin Team

Approved Watershed Plan: No

WFMP Year: N/A

Volunteer Support Participants: N/A



SUMMARY

- Each Council District spans at least 2 watersheds
- Council District 12 spans all 9 Fayette County watersheds
- KDOW updates the assessment of streams every two years
- LFUCG's WFMP will
 - verify or rebut KDOW's determinations
 - find specific sources of pollution
 - support future allocations of resources to address impairments



QUESTIONS?