



EA Partners, PLC



CIVIL ENGINEERS • LAND SURVEYORS • LANDSCAPE ARCHITECTS

JMC J.M. Crawford & Associates
Consulting Engineers

Magna
ENGINEERS

**REQUEST FOR QUALIFICATIONS
ROADWAY CORRIDOR AND INTERSECTION
DESIGN PLANNING, CONTRACT #1**

#38-2016



November 10, 2016

Ms. Todd Slatin, Purchasing Director
Division of Central Purchasing
Lexington-Fayette Urban County Government
Room 338, Government Center
200 East Main Street
Lexington, Kentucky 40507

RE: RFP #38-2016
Professional Engineering Services Statement of Qualifications
Request for Proposal (RFP)

Mr. Slatin:

EA Partners is pleased to present our Statement of Qualifications Package to provide Professional Engineering Services for the Lexington Fayette Urban County Government's Division of Engineering. We would like to be considered for **Contract 1**—Roadway Corridor and Intersection Design/Planning. Attached is one (1) master copy, seven (7) duplicates, and one (1) electronic copy of our response.

EA Partners has provided civil engineering, land surveying and landscape architecture services in Fayette County for over 37 years. Our team is truly local with all firms headquartered in Lexington. We possess the talent required, and have the capacity to perform the work. EA Partners brings an abundance of "practical solution" experience, unique local knowledge and as residents of Fayette County, a vested interest in project success. EA Partners has designed, bid, and managed the construction of a vast number of Roadway, Stormwater Management and Sanitary Sewer projects according to LFUCG policies, procedures and regulations which makes us more than qualified to complete this contract to the LFUCG's utmost satisfaction.

Prequalified with the Kentucky Transportation Cabinet, EA Partners has also had a long successful history of providing Roadway Design and Studies in Urban and Rural areas throughout the Commonwealth. Joining our team is J.M. Crawford & Associates (Structural) and Magna Engineers (Electrical/Lighting and DBE Component).

EA Partners has a litany of experience in Roadway Corridor and Intersection Planning, Design, and Construction Management within Fayette County and throughout the Commonwealth of Kentucky. We appreciate your consideration and look forward to our continued working relationship.

Sincerely,

EA PARTNERS, PLLC

Albert W. Gross, P.E., P.L.S.
Principal-in-Charge

FIRM QUALIFICATIONS

EA Partners, PLC is a Lexington based consulting firm, founded in 1979, specializing in the planning, design and construction management of transportation networks, stormwater management facilities, and sanitary sewer systems. Joining our team will be J.M. Crawford & Associates for Structural Engineering and Magna Engineers for Electrical and Mechanical Engineering. Magna Engineers is a certified Disadvantaged Business Enterprise with the Kentucky Transportation Cabinet (KYTC). All firms are founded and headquartered in Lexington, and all work will be completed in Lexington.

EA Partners, as one of a handful of locally headquartered, still locally maintained firms, have prided ourselves in delivering quality, cost-effective designs throughout Fayette County. We have maintained a historically strong presence in the development of roadway designs, roadway planning studies, and roadway rehabilitations throughout the Commonwealth for the KYTC. EA Partners is pre-qualified with the KYTC in numerous categories as are listed in Figure 1. We have also served on multiple Statewide Contracts for the KYTC, including Statewide Pavement Rehabilitation and Statewide Roadway Design. These contracts maintain a rotating pool of 3-4 consultants who are hired to perform work on varied projects from intersection re-alignments to rehabilitating a roadway for better access and drainage. In essence, these contracts are the KYTC's equivalent of the LFUCG's Professional Engineering Services Contract #1-Roadway Corridor and Intersection Design Planning. In each KYTC Statewide Contract, EA Partners delivered studies and/or plans under accelerated schedules and on budget. A list of our relevant Statewide projects are shown in Figure 2.

- Rural Roadway Design
- Urban Roadway Design
- Surveying
- Advanced Traffic Engineering Design & Modeling
- Construction Project Supervision
- Traffic Engineering Services
- Transportation Planning Services
- Pedestrian & Bicycle Facility Planning & Design

Figure 1

- Moberly Road Widening, Harrodsburg, KYTC D-7
- KY 298 Roundabout, KYTC D-2
- Friendship Road Intersection Improvement, Paducah, KYTC D-1
- U.S. 31-W Access Management Study, Radcliff, KYTC D-4
- Two I-65 Sound Barrier Wall, Louisville, KYTC D-5
- KY 715 Intersection Re-alignment, KYTC D-10
- KY 30 Utility Relocation Coordination, KYTC D-10

Figure 2

The Roadway Corridor and Intersection Design Planning Contract can require a wide variety of tasks. Examples include: Roadway Rehabilitation/Re-alignment, Detailed Traffic Studies, Existing Infrastructure Inventory (condition, location, etc.), Evaluation of Typical Sections, Stormwater Analysis, Sanitary Sewer Design, Utility Relocations, Easement/Right of Way Acquisitions, Evaluation of Sidewalk and Multi-Modal Additions, Permitting, Traffic Calming Features, Streetscape Designs and various other services. These projects may require reports, design plans, specifications, field survey, GIS databases, public meetings, cost estimates, funding applications, and/or construction management. EA Partners possesses un-paralleled experience performing all these services according to LFUCG Standards, Policies and Regulations. We have worked on several LFUCG projects (Figure 3), most of which have been completed. Our work on Expansion Area Roadways, Sanitary Sewers and Stormwater Management projects required design, bid, and construction management strictly adhering to LFUCG regulations. Our experienced staff is well equipped to plan, design, bid, and manage the construction of any project this contract will require to the LFUCG's complete satisfaction.

EA Partners possesses un-paralleled experience performing all these services according to LFUCG Standards, Policies and Regulations. We have worked on several LFUCG projects (Figure 3), most of which have been completed. Our work on Expansion Area Roadways, Sanitary Sewers and Stormwater Management projects required design, bid, and construction management strictly adhering to LFUCG regulations. Our experienced staff is well equipped to plan, design, bid, and manage the construction of any project this contract will require to the LFUCG's complete satisfaction.

- ◆ EA Partners has been recognized nationally for Engineering Excellence for our pavement salvaging techniques.
- ◆ EA Partners' has recently completed 7 projects for LFUCG.
- ◆ EA Partners provides client-owner involvement and has provided a team of people who have a minimum of 17 years experience.
- ◆ EA Partners grasps problems, has the ability to see the Big Picture and the ability to deliver high quality designs.
- ◆ EA Partners has a long history of Roadway designs for Fayette County and KYTC.

FIRM QUALIFICATIONS

Traffic Engineering studies can play a key role in many of these projects. EA Partners has performed a multitude of Traffic Impact Studies, Intersection Analyses, Level of Service Calculations and realistic traffic modeling via VISSIM. We have two certified Professional Traffic Operations Engineer (PTOE) on staff that specialize in developing Traffic Engineering solutions. Our traffic efforts will be led by Clive Weller, PE, PTOE. Clive has performed a vast number of traffic studies throughout Lexington and the Commonwealth. Prior to joining EA Partners, he managed Highway Operations for the Central Highway Network of London, England. Among his duties in London were annual reports on traffic for vehicles, pedestrians, bicyclist, and mass transit. Clive also monitored highway upgrades, maintenance operations, lighting, and signaling for this immense network of city roads in tightly constrained corridors. His expertise will prove very valuable to these projects.

Numerous state routes exist in Fayette County, which may require collaboration with KYTC District 7. EA Partners enjoys an excellent working relationship with KYTC District 7 Lexington. Jerry Cottingham, a Principal in EA Partners, will serve as District 7 liaison and be in charge of obtaining any required Encroachment Permits that may be needed. Jerry has designed projects for District 7 for much of his career. While at EA Partners he has managed Brannon Road (Jessamine County), U.S. 25 (Fayette/Scott Counties), U.S. 460 (Bourbon County), U.S. 68 (Bourbon/Nicholas Counties), Moberly Road (Mercer County), and every mile of I-64 from Lexington to, and including, the Mountain Parkway interchange all for District 7. He is well known by all District Personnel and will be a valuable asset should a State maintained route be involved.

The professionals we have dedicated to this contract, as outlined in the Project Team, have an average of 23 years with EA Partners and we have four Principals of EA Partners in key roles. We commit a team of professionals with a minimum of 17 years of experience to this project. These two items guarantee the LFUCG an experienced professional working on their project and who will be there for the duration of the project.

We believe EA Partners is a perfect fit for this Roadway Corridor and Intersection Design Planning Contract. We have built our reputation designing transportation networks throughout Fayette County and the entire Commonwealth. In every project for the LFUCG, KYTC, or private client we have delivered a practical, biddable, constructible, cost-efficient design that has improved mobility and met or exceeded the client's expectations.

- Versailles Road Corridor Study*
- Coolavin Rail Trail*
- Hope Center Trail*
- Town Branch Trail Mid-Block Crossing*
- Andover Trunk Sewer*
- Leestown West Pump Station Decommission*
- Hillenmeyer Pump Station Decommission*
- Shandon Park Trunk Sewer

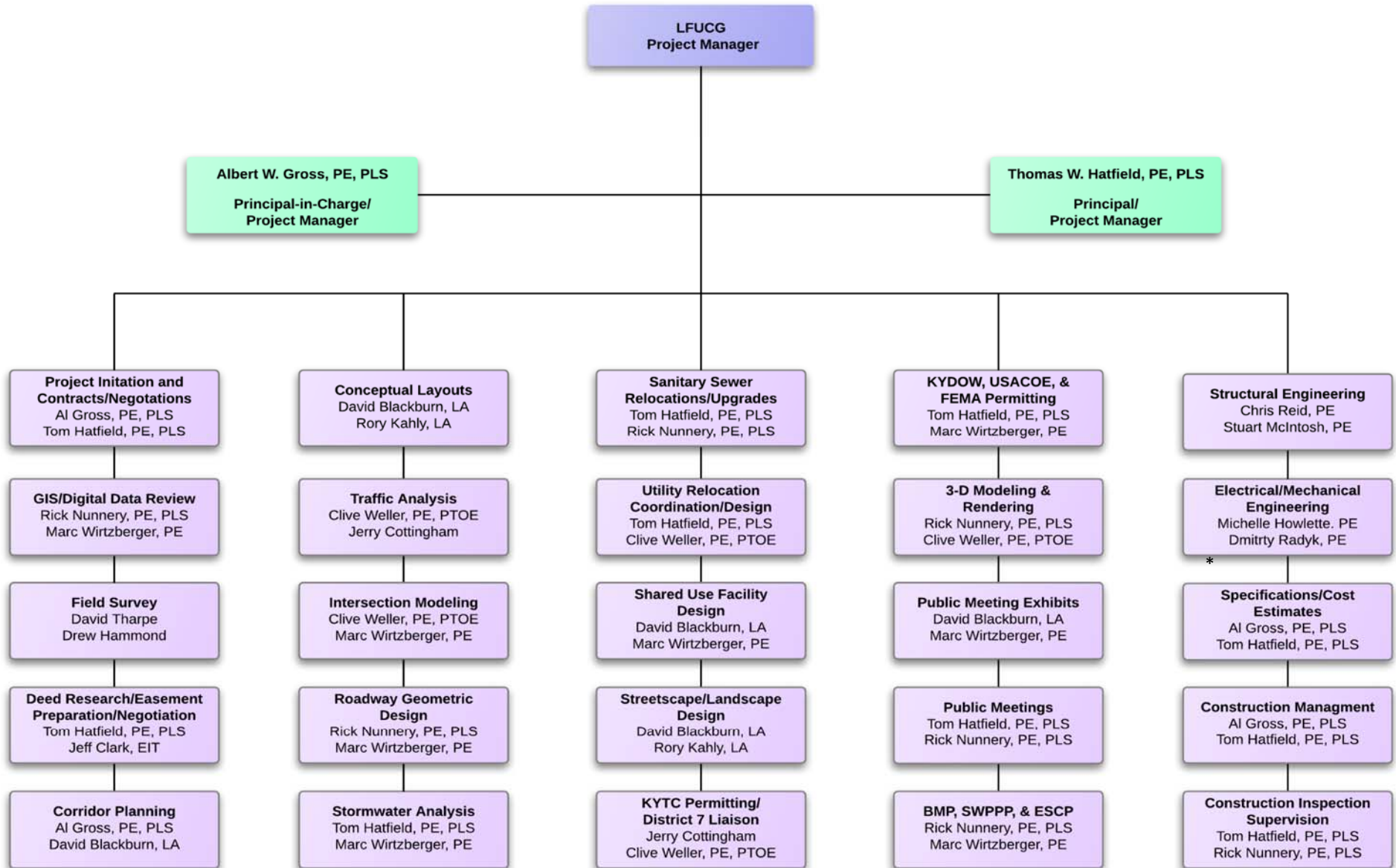
*Completed

Figure 3

- ◆ EA Partners has selected immensely experienced team members and a project management approach that will ensure a quality product at a competitive price.
- ◆ Traffic Engineer, Clive Weller, is an expert in VISSIM and CORSIM traffic modeling and serves as a software tester for McTrans Traffic Software.
- ◆ EA Partners dedicates at least two owners to each project ensuring direct contact with a person vested in the success of the project.
- ◆ EA Partners is known for accurate cost estimates, practical designs, and client satisfaction.



PROJECT TEAM ORGANIZATIONAL CHART



*Magna Engineers is a Certified DBE/MBE with KYTC.



ALBERT W. GROSS, PE, PLS
PRINCIPAL-IN-CHARGE/PROJECT MANAGER

Master of Science, Civil Engineering
University of Kentucky

Professional Engineer – KY 10350
Land Surveyor – KY 2115

Experience: 42 Years

Mr. Gross has over forty-two years experience in transportation, sanitary sewer, and stormwater management projects. Mr. Gross is the Principal-in-Charge in many of the firm's transportation projects and all of the firm's sanitary sewer, drainage, and water distribution projects. He is experienced in all phases of Project Development, including planning, survey, design, inspection, report writing, economical analysis and construction management. Mr. Gross is responsible for regularly monitoring performance and commitment.

APPLICABLE TECHNICAL TRAINING

- University of Kentucky SEDIMOT II Applied Hydrology & Sedimentology for Disturbed Areas
- University of Kentucky REAME Computer Analysis of slopes

Versailles Road Corridor Study | Project Manager

- Feasibility Study
- Topographic Survey
- Construction Plans
- Project Specifications
- Cost Estimates
- Meetings with Stakeholders
- Easement Exhibits and Legal Descriptions

Town Branch Trail | Fayette County | Project Manager

- 1.25 Mile Bikeway Sponsored by Town Branch Trail, Inc. and performed for the LFUCG
- Segment of 5 mile Town Branch Trail
- Designed to meet applicable State and Federal guidelines

**Expansion Area Boulevards & Parkways | Fayette County | Project Manager
(Hays Blvd, Polo Club Blvd & Providence Place Parkway)**

- 2-Lane & 4-lane divided and undivided roadways;
- Built to LFUCG Standards;
- Bid according to LFUCG Procurement Standards;
- EA Partners Construction Management, Staking & Inspection.



THOMAS W. HATFIELD, PE, PLS
PRINCIPAL/PROJECT MANAGER

Bachelor of Science, Civil Engineering
University of Kentucky

Professional Engineer – KY 15133
Land Surveyor – KY 3547

Experience: 33 Years

Mr. Hatfield has over thirty-three years experience in roadway and shared use path design and study of sanitary sewers, storm sewers, and water distribution systems. He has recently completed two roadway, two trail, and three sanitary sewer projects for LFUCG. His experience includes all phases of project development including field surveys, property owner determination, storm sewer design, stormwater management, floodplain modeling, utility relocations, and maintenance of traffic. Mr. Hatfield is a Rosgen Level IV Certified Stream Mitigator. He also has a vast amount of experience in highway design for KYTC. He has successfully managed numerous projects including the following:

APPLICABLE TECHNICAL TRAINING

- Rosgen Natural Stream Restoration Workshops (2009 - 2010)
- Thinking Beyond the Pavement (Workshop in Context Sensitive Planning and Design)

Versailles Road Corridor Study | Project Engineer

- Feasibility Study
- Topographic Survey
- Construction Plans
- Project Specifications
- Cost Estimates
- Meetings with Stakeholders
- Easement Exhibits and Legal Descriptions

Coolavin Rail Trail | Fayette County | Project Manager

- 0.5 Mile multi-use path designed for the LFUCG
- Portion of Legacy Trail connecting to 6th Street Entertainment District
- Located on abandoned railroad right of way
- Extensive meetings with stakeholders

Hope Center Trail | Fayette County | Project Manager

- 0.25 mile multi-use path designed for the LFUCG
- Studied several alternate alignments relative to adjacent railroad, property owners and Loudon Avenue intersection
- Required coordination with R.J. Corman and CSX Railroad
- Included gated and signalized rail crossings





Rick Nunnery, PE, PLS
PRINCIPAL/PROJECT ENGINEER

Bachelor of Science, Mining Engineering
University of Kentucky

Professional Engineer – KY 23101
Land Surveyor – KY 3992

Experience: 18 Years

Mr. Nunnery has over eighteen years of experience working on various projects throughout Fayette County and for the Kentucky Transportation Cabinet. Mr. Nunnery has extensive experience in the all phases of roadway design, including planning studies, survey, roadway design, stormwater management, right-of-way plans, and report writing. Specific project experience includes:

APPLICABLE TECHNICAL TRAINING

- Project Management –University of Alaska
- Open Channel Hydraulics - University of Alaska Anchorage

U.S. 460 | Magoffin County | Project Engineer

- 2.5 miles widening of urban arterial with a significant number of utility conflicts;
- Provided access plan reducing ninety access points to six intersections;
- Included ten foot multi-use path;
- Preliminary and Final Design;
- Public Outreach and Public Meetings

**Expansion Area Boulevards & Parkways | Fayette County | Project Engineer
(Hays Blvd, Polo Club Blvd & Providence Place Parkway)**

- 2-Lane & 4-lane divided and undivided roadways;
- Built to LFUCG Standards;
- Bid according to LFUCG Procurement Standards;
- EA Partners Construction Management, Staking & Inspection.

Versailles Streetscape | Woodford County | Project Engineer

- Design of the Streetscape including infrastructure and amenities such as curb, sidewalk, stamped concrete entryways, ADA accessibility, landscaping, and lighting;
- Extensive coordination with the State Office of Local Programs and KYTC District 7;
- Development of all estimates, contract and proposal documents;
- Coordination of the construction process from bidding to inspection and monitoring of construction.



MARC WIRTZBERGER, PE
PROJECT ENGINEER

Bachelor of Science, Civil Engineering
University of Kentucky 2000

Professional Engineer – KY 24798

Experience: 17 Years

Mr. Wirtzberger has over 17 years experience working on various highway projects for the Kentucky Transportation Cabinet and throughout Fayette County. His experience includes working on highway relocations, widening projects and rehabilitation projects. Mr. Wirtzberger has worked on numerous stormwater projects involving pipe sizing, flood-plain analysis, FEMA Map revisions, and detention basin sizing for EA Partners. His other experience includes cost estimates, erosion control plans, Right-of-Way calculations and research, Public Meeting preparation and preparation of plans and exhibits for all phases project development.

APPLICABLE TECHNICAL TRAINING:

- National Flood Insurance Program CLOMRs, LOMRs, LOMAs
- Advanced Water Surface Profile HEC-RAS 3.1.3
- Roadside Design Guide Training

Moberly Road | Mercer County | Project Manager

- Widen approximately 0.75 miles of rural roadway from 2-lanes to 3-lanes;
- Performed traffic counts;
- Performed detailed intersection analysis to determine size and location of turn lanes;
- Performed HEC-1 drainage analysis in order to salvage existing drainage culvers;
- Coordination with KYTC District 7, local officials and Mercer County school system.

U.S. 31W | Hardin County | Project Engineer

- Strategic Access Management Plan;
- Plan to eliminate unsafe median crossovers;
- Proposed depressed median addition with directional U-turns at signals;
- Plan reduced vehicular conflict points by 70%;
- Provided adequate turn-lane lengths.

Town Branch Trail | Fayette County | Project Engineer

- 1.25 Mile Bikeway Sponsored by Town Branch Trail, Inc. and performed for the LFUCG;
- Segment of 5 mile Town Branch Trail;
- Designed to meet applicable State and Federal guidelines.





JERRY COTTINGHAM
PRINCIPAL/PROJECT MANAGER

90 Credit Hours, Civil Engineering
University of Kentucky

Experience: 48 Years

Mr. Cottingham has 48 years experience working on the planning design and construction of transportation projects. Throughout his career he has worked on the **widening and rehabilitation of over 200 miles of interstate and parkway facilities**. Some of the most iconic include the Waterson Expressway, I-75, I-64, Pennyriple Parkway as well as the Western Kentucky and Cumberland Parkways. As EA Partners' Design Manager, Mr. Cottingham has been responsible for some of EA Partners' most challenging urban roadway rehabilitations including U.S. 41A Christian County, U.S. 460 Salyersville, and U.S. 25 Laurel County. He is experienced in all phases of project development including scoping studies, geometric design, drainage analysis, maintenance of traffic plans and right-of-way.

APPLICABLE TECHNICAL TRAINING

- AASHTO Roadside Design
- Traffic Management Plan Development

U.S. 25 | Laurel County | Project Manager

- Study and design of 3.5 miles of Urban Roadway for the Kentucky Transportation Cabinet;
- Extensive storm sewer design and pavement drainage analysis;
- Pavement salvage strategy plan;
- Floodplain modeling;
- Extensive Public involvement;
- Access Management Plan.

U.S. 25 | Scott County | Project Manager

- Study & Design 6.5 miles of Rural & Urban Roadway for KYTC;
- Minimize Right-of-Way & Utility Impacts;
- Provide Landscaping Plans to Maintain viewsheds;
- Access Management Plans;
- Studied Multiple Typical Section.



CLIVE WELLER, PE, PTOE
TRAFFIC ENGINEER

Bachelor of Science, Civil Engineering with Architecture
University of Leeds, England 1991

Professional Engineer – KY 25770
Professional Traffic Operations Engineer – KY 3293

Transportation Experience: 22 Years

A native of London, England; for twelve (12) years Mr. Weller oversaw the central London highway network which included coordinating all routine maintenance, inspections and repairs to highways, sidewalks, street lighting, signing and striping. He also prepared annual reports on the Highway Network and Intersection performance for vehicles, mass transit and bicycle users, proposed network and intersection improvements. Since 2007, Mr. Weller has been a Project Engineer and Project Manager for EA Partners. A Professional Traffic Operations Engineer, he has developed a multitude Traffic Signal Warrants Analyses for LFUCG, KYTC, and Private projects. His experience has also included Level of Service calculations, intersection analysis, turning lane analysis, VISSIM traffic analysis, and traffic impact studies.

APPLICABLE TECHNICAL TRAINING

- Highway Capacity Analysis
- VISSIM Training
- Traffic Impact Study Training

KY 298 Intersection | Daviess County | Project Engineer

- Traffic Study & Intersection Analysis;
- Horizontal and vertical geometry layout for a roundabout intersection;
- Prepared a VISSIM traffic analysis comparing intersection types for the public meeting and intersection selection process.

KY 1286 Friendship Road | McCracken County | Project Engineer

- Traffic and Turning Movement Analysis for a 2-lane/5-lane, four legged intersection;
- Addition of Turn Lanes per EAPs' Analysis and Report;
- Preliminary, Final and Right-of-Way Plans Generated;
- Urban and Rural Typical Sections;
- Storm Sewer and ditch capacity analysis.





RORY KAHLY, LA
LANDSCAPE ARCHITECT & LAND PLANNER

Bachelor of Science, Landscape Architecture
University of Kentucky

Experience: 20 Years

Mr. Kahly has over twenty years of experience on various land planning/landscaping design projects including Landscaping Plans for subdivision, commercial and professional developments, as well as transportation projects for the Kentucky Transportation Cabinet. Mr. Kahly has also worked with EA Partners' engineers on each of our trail projects to ensure that not only bikeway standards were met but to ensure that the design did minimal disturbance. He has worked with LFUCG, KYTC, TVA, U.S. Forest Service, Kentucky Trails to Trails Council, and worked on numerous multi-use projects including the following:

APPLICABLE TECHNICAL TRAINING

- Subdivision and Land Use
- Low Water Crossing Design
- FEMA Training

RELEVANT EXPERIENCE

- The Reserve at Bryant Oak, Fayette County
- Gleneagles, Fayette County
- Townley Center, Fayette County
- U.S. 68, Bourbon/Nicholas Counties, KYTC Project
- U.S. 41A, Christian County, KYTC Project
- U.S. 68, Marshall/Trigg Counties, KYTC Project
- U.S. 27, Pulaski County, KYTC Project



DAVID BLACKBURN, LA
LANDSCAPE ARCHITECT & LAND PLANNER

Bachelor of Science, Landscape Architecture
University of Kentucky

Transportation Experience: 30 Years

As one of the original employees of EA Partners, Mr. Blackburn has become one of the preeminent transportation and land planners in all of Kentucky. He has produced thousands of plans that improve mobility for vehicles, bicycles and pedestrians. Additionally, Mr. Blackburn has developed streetscape plans, aesthetic corridor enhancements, and high quality renderings of proposed plans.

APPLICABLE TECHNICAL TRAINING

- Modeling Stormwater Runoff Reduction
- Construction Management
- Wetlands Delineation
- Riparian Rights
- Streambank Restoration

TRANSPORTATION CORRIDOR PLANS

- Waterford Transportation Corridors Layout, Fayette County
- Beaumont Transportation Corridors Layout, Fayette County
- Glassford Transportation Corridors Layout, Fayette County
- Versailles Road Corridor, Fayette County
- Chilesburg Transportation Corridor Layout, Fayette County
- Versailles Streetscape Plan, Woodford County
- Patchen Wilkes Community Layout, Fayette County
- I-69/I-24 Interchange, Marshall County, KYTC Project



JEFF CLARK, EIT
 SURVEY COORDINATOR, LEGAL EXHIBITS & CONST. MGMT.

Bachelor of Science, Civil Engineering
 University of Kentucky

Experience: 33 Years

Mr. Clark has over thirty-three years of experience in the surveying and design of sanitary sewers, storm sewers, stormwater management facilities, and transportation projects. Mr. Clark has been responsible for coordination of the firm's surveying operations including scheduling, construction staking, boundary surveys, and as-built verification surveys. Relevant project experience includes:

Coolavin Rail Trail | Fayette County | Survey Coordinator

- 0.5 Mile multi-use path designed for the LFUCG
- Portion of Legacy Trail Connecting to 6th Street Entertainment District
- Located on abandoned railroad right of way
- Extensive meetings with stakeholders

Town Branch Trail | Fayette County | Project Engineer

- 1.25 Mile Bikeway Sponsored by Town Branch Trail, Inc. and performed for the LFUCG
- Segment of 5 mile Town Branch Trail
- Designed to meet applicable State and Federal guidelines

U.S. 25 | Laurel County | Survey Coordinator

- Study and design of 3.5 miles of Urban Roadway for the Kentucky Transportation Cabinet
- Extensive storm sewer design and pavement drainage analysis
- Pavement salvage strategy plan
- Floodplain modeling
- Extensive Public involvement
- Access management plan

Expansion Area Boulevards & Parkways | Fayette County | Survey Coordinator & Construction Management (Hays Blvd, Polo Club Blvd & Providence Place Pkwy)

- 2-Lane & 4-lane divided and undivided roadways;
- Built to LFUCG Standards;
- Bid according to LFUCG Procurement Standards;
- EA Partners Construction Management, Staking & Inspection.



CHRISTOPHER REID, PE (JM CRAWFORD)
 STRUCUTRAL ENGINEER

Bachelor of Science, Civil Engineering
 University of Kentucky

Professional Engineer - KY #13057

Experience: 20 Years

Chris joined the staff of J.M. Crawford & Associates, Inc. in 1974 working part-time while attending college. He joined the staff fulltime upon his graduation from UK. Presently Chris is Vice President of the firm and provides design engineering on highway and bridge projects. Chris was Structural Project Manager on these similar projects:

LFUCG | Fayette County | Citation Boulevard over Bracktown Branch and Proposed Bicycle/Pedestrian Path - Chris was in charge of determining the most efficient, cost effective structural system and supervised all structural design and plan preparation. Chris coordinated with other LFUCG agencies to ensure the bridge allowed for the necessary vertical and horizontal requirements for the bicycle/pedestrian path.

LFUCG | Fayette County | Citation Boulevard over Norfolk-Southern Railroad - Chris was in charge of determining the most efficient, cost effective structural system and supervised all structural design and plan preparation. Chris coordinated all horizontal and vertical clearances with the railroad company.

KYTC | Fayette County | Old Frankfort Pike over New Circle Road - Chris was in charge of developing a bridge that would allow for the widening of New Circle Road and new ramp construction onto Old Frankfort Pike. Chris supervised all structural design and plan preparation including the phase construction required to maintain traffic on New Circle Road.

CLIENT LIST—CONTRACT #1

ROADWAY CORRIDOR AND INTERSECTION DESIGN/PLANNING

Lexington-Fayette Urban County Government
 Mr. Keith Lovan
 101 East Vine Street
 Lexington, KY 40507
 Phone: 859.258.3410

Kentucky Transportation Cabinet District 7
 Mr. Rob Sprague, PE, Project Development Manager
 763 W New Circle Road, Building 2
 Lexington, KY 40512
 Phone: 859.246.2355

Ball Homes, Inc.
 Mr. Ray Ball, President
 3609 Walden Drive
 Lexington, KY 40517
 Phone: 859.268.1191

City of Versailles
 Mr. Brian Traugott, Mayor
 196 S Main Street
 Versailles, KY 40383
 Phone: 859.873.4581

Lexington-Fayette Urban County Government
 Mr. Mark Feibes, PE
 101 East Vine Street, 4th Floor
 Lexington, KY 40507
 Phone: 859.258.3410

Kentucky Transportation Cabinet District 10
 Mr. Aric Skaggs, PE, TEBM for Project Development
 473 Highway 15 S
 Jackson, KY 41339-8841
 Phone: 606.666.8841

“EA Partners has performed design services for the LFUCG Division of Engineering on a number of projects for a number of years. As the Project Manager for some of these projects I have been keenly aware of the work that EA has performed. EA Partners innovative approach to design and construction has produced unique opportunities for the citizens of Lexington. The plans and specifications that they have produced represent EA’s level of professionalism and accountability and I would expect this to continue.

I believe EA Partners possess the creativity, the innovation and the technical skill set to effectively complete any project required by the LFUCG.”

Keith Lovan, P.E./LFUCG

“I have had the pleasure of working with EA Partners on two Statewide Roadway Design Projects and two sections of the Mountain Parkway. Each time I have found them to be thorough, knowledgeable, easy to work with, and extremely responsive. Their designs are well thought out, with “The Big Picture” of the project in mind. They always go the extra mile and don’t nickel and dime on any of our projects. Most recently they were contracted to develop one alternate for a Statewide Roadway Project in Wolfe County. At a Project Review Meeting they arrived with three separate alternates, one of which had not been considered and was ultimately chosen as the preferred alternate for a substantial cost savings.”

Aric Skaggs, P.E.
 TEBM for Project Development
 KYTC District 10, Jackson

SIMILAR PROJECTS—CONTRACT #1

Versailles Road Corridor Study | Fayette County

EA Partners performed a planning study for the LFUCG to provide gateway corridor improvements along Versailles Road from Parkers Mill Road to Oliver Lewis Way. An extensive site inventory was performed and cataloged to assist in developing improvement concepts. EA Partners analyzed lane diet opportunities to add multi-modal connectivity, provide separation between pedestrians and vehicles and improve pavement drainage while avoiding large utilities. The study also assessed using landscaped medians to provide aesthetic entry ways and to provide access management. EA Partners provided detailed cost estimates for use in obtaining future funding.



- Feasibility Study
- Landscape Concepts
- Maintenance of Traffic
- Analysis of Multiple Typical Sections
- Coordinate w/ KYTC D-7
- Floodplain Modeling
- Detailed Cost Estimates
- Field Survey
- Multi-Modal Connectivity
- Public Meetings
- Pavement Salvage

KY 298 | Roundabout | Daviess County

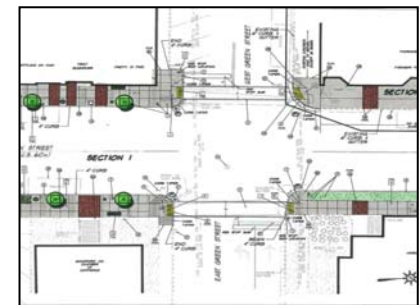
The KY 298 intersection improvement project examined an existing four-legged, signalized intersection in Owensboro, Kentucky. Located in an urban setting, KY 298 had single lane approaches, no turning lanes and heavy AM and PM turning movements resulting in significant delays. The addition of turn lanes required excessive storage lengths and cycle times. A solution with dual-left turn lanes proved problematic due to buildings on either side. Ultimately a Multi-lane Roundabout was selected by the Public and KYTC; which reduced the typical section and storage requirements. All alternates were evaluated for approach and intersection Level of Service; queue length; approach delay; intersection delay; Right of Way impacts; Utility relocations; construction cost and constructability. VISSIM traffic simulations were used to visually the operation of each chosen alternate.



- Feasibility Study
- Right-of-Way Plans
- Maintenance of Traffic
- Roadway Improvements in Developed Corridor
- Permitting
- Legal Descriptions
- Public Hearings
- Field Survey
- Traffic Study & Report
- VISSIM Visual Intersection Modeling

Versailles Streetscape Renovation | Phase III | Main Street | Woodford County

The LPA project was for three blocks of streetscape design on North Main Street in downtown Versailles, Kentucky. The project provided new curbs, sidewalks, landscaping and other fixtures to complete the Main Street corridor. The project involved a considerable amount of coordination with the LPA Coordinator for District 7 and BGADD. It began with a project walk through to assess, evaluate and coordinate potential environment issues and concluded with successful consent releases from several properties for easements.



- Coordinate w/KYTC D-7
- Streetscape Design
- Maintenance of Traffic
- Cost Estimates
- Permitting
- Sidewalk Replacement
- Specifications
- ADA Compliance
- Field Survey
- Legal Descriptions
- LPA Project
- Construction Management

EA Partners, PLLC

CIVIL ENGINEERS • LAND SURVEYORS • LANDSCAPE ARCHITECTS

SIMILAR PROJECTS—CONTRACT #1

U.S. 460 | Restaurant Row | Magoffin County

The project involved Phase I and II Design for the widening of an urban arterial, including a 10 foot multi use path. The project was approximately 2.5 miles and reduced ninety-five access locations to six intersections. The project was completed for the Kentucky Department of Highways. The project timeline was accelerated to qualify for a \$24 million TIGER Grant.

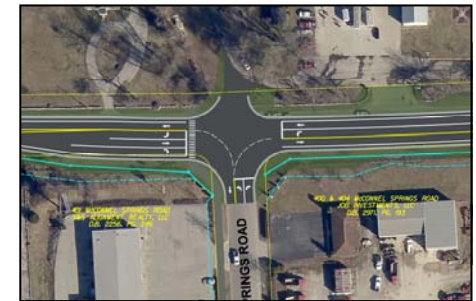
- Utility Coordination
- Storm Sewer Design
- Plans, Specifications & Estimate
- Frontage & Backage Road Design
- Field Survey
- Traffic Counts, Model & Report
- Public Meetings
- Floodplain Analysis
- Business Impacts
- Complex MOT
- Intersection Turning Radius Analysis



Old Frankfort Pike (KY 1681) Re-alignment/Widening | Town Branch Trail Mid-Block Crossing | Fayette County

EA Partners was contracted by the LFUCG to create a mid-block crossing of Old Frankfort Pike at McConnell Springs Road for a multi-modal trail. As part of this crossing, approximately 1,750-ft of Old Frankfort Pike was widened and added turn-lanes, curb and gutter, and storm sewers. The grade of Old Frankfort Pike was modified to achieve adequate sight distance, which resulted in re-aligning the road to avoid a rock wall. The project required EA Partners to perform traffic and signal warrant analyses. In addition to the construction plans, specification documents and KYTC Encroachment Permit, EA Partners prepared legal descriptions and plats for Right of Way and Easement acquisition.

- Encroachment Permit
- Storm Sewer Design
- Plans, Specifications & Estimate
- Traffic Study & Report
- Field Survey
- Traffic Signal Warrants
- Public Meetings
- Multi-Modal Trail Crossing



LFUCG Expansion Area Boulevards & Parkways | Fayette County (Hays Boulevard, Polo Club Boulevard, Blackford Parkway, and Providence Place Parkway)

In July 1996 the LFUCG adopted the Expansion Area Master Plan which defined proposed public improvements (roadways, sanitary sewers, stormwater management areas, etc.). Since 1996, EA Partners has designed, bid, and managed construction of over 70% (5.25 miles) of the currently built boulevards and parkways. Being reimbursable public improvements, each project required strict adherence to LFUCG Regulations, Procedures and Policies relative to design, bidding, and construction. In each project EA Partners successfully oversaw all phases of project development to insure that LFUCG regulations were met. Each project presented its own challenges, one of which was closing of Man O War Boulevard for multiple months to raise its elevation 20-ft for the construction of Blackford Parkway and its associated 2,000 acre stormwater management facility.

- Feasibility Study
- Storm Sewer Design
- Plans, Specifications & Estimate
- Frontage & Backage Road Design
- Field Survey
- Sanitary Sewer Design
- Public Meetings
- Stormwater Mgmt Design
- LFUCG Bidding Process
- Construction Mgmt & Inspection



LOCAL OFFICE

Prime Consultant	Location (City, State)	Date Office Established	Total Number of Employees	No. of Employees expected to work on DOE projects
Headquarters	Lexington, KY	1979	24	13
Local Office	Lexington, KY	1979	24	13
PM Location	Lexington, KY			
Subconsultants				
Name: JM Crawford & Associates				
Service Provided: Structural				
Headquarters	Lexington, KY	1967	7	2
Local Office	Lexington, KY	1967	7	2
Name: Magna Engineers (DBE)				
Service Provided: Electrical/Mechanical				
Headquarters	Lexington, KY	2011	3	3
Local Office	Lexington, KY	2011	3	3
Name:				
Service Provided:				
Headquarters				
Local Office				
Name:				
Service Provided:				
Headquarters				
Local Office				

- ◆ 100% of the work will be performed within the City of Lexington.
- ◆ EA Partners has been recognized 7 times for Engineering Excellence by ACEC.
- ◆ Your Project Manager will be a Lexingtonian, an owner in EA Partners, and available to meet within a moments notice.
- ◆ All of our team member firms are headquartered in Lexington.



DISADVANTAGED BUSINESS ENTERPRISE (DBE)

EA Partners, PLC is aware and understands the goals of the Lexington-Fayette Urban County Government and the Division of Engineering that no less than ten percent (10%) of the total value of work conducted under this contract be subcontracted to Disadvantaged Business Enterprises (DBE). To meet this goal we have included as a part of our design team Magna Engineers. Magna Engineers is a Certified Economically Disadvantaged Woman-Owned Small business in accordance with Small Business Administration requirements. Additionally, Magna is a certified Women Business Enterprise with the Women's Business Enterprise National Council and is a certified DBE with KYTC.

Magna Engineers, founded by Michelle Howlett in 2011, will provide electrical, mechanical and instrument control engineering services as needed during the detailed design phase. Magna Engineers is prequalified with the KYTC in Electrical Engineering/Lighting. Magna Engineers successfully teamed with EA Partners in a similar capacity on the Versailles Streetscape Project. Magna worked closely with KU, City of Versailles, and EA Partners to not only provide ornamental lighting, but additional electrical facilities for festival vendors.

T. MICHELLE HOWLETT, PE, (MAGNA)

MECHANICAL & ELECTRICAL ENGINEER



**Bachelor of Science, Electrical Engineering
University of Kentucky**

**Professional Engineer - KY Electrical #19856
NFPA Member #2543563
LEED Accredited Professional**

Experience: 25 Years

Ms. Howlett has over 25 years of experience as project manager and electrical engineer for a broad array of projects up to \$131M in scope. Ms. Howlett has experience with projects using design-bid-build, design-build, and construction management delivery methods. Ms. Howlett's technical areas of expertise include low and medium voltage power distribution, communications systems including fiber optic systems and wireless, fire alarm systems, power quality, security systems, closed circuit video, and indoor and outdoor lighting systems

Downtown Development Streetscape | Owensboro, KY – Electrical engineer of record for upgrades to eight city blocks in the heart of downtown. The project included roadway, parking area, and decorative lighting, as well as small power receptacles.

Fountain Avenue Streetscape | Springfield, OH - Electrical engineer for streetscape improvements. The project includes new lighting and holiday receptacles along four blocks, and new lighting along an additional seven blocks. The design also includes ductbanks for future communications wiring.

Streetscape Improvements | Nicholasville, KY – Electrical engineer for the design of streetscape improvements for several blocks of downtown. Improvements included new streetlighting designed in compliance with Department of Transportation requirements. The project also included burying of existing overhead communications and power system primary at intersections.

Household Hazardous Waste Facility | Lexington, KY – Project Manager for mechanical and electrical disciplines for the renovation of an existing city building to a new facility for collection of residential household hazardous waste.

Deep Springs Wastewater Pump Station | Lexington KY – Electrical and instrumentation for a new wastewater pump station which replaces an existing pump station in a residential area. The project includes variable frequency drives, level control system, standby power, and telemetry.

Nutter Football Practice Field | University of Kentucky – Electrical engineer for new synthetic and natural fields. The electrical system included new field lighting, electrical service, and connection to the existing campus communication systems to a relocated field tower.

EA Partners, PLC



EA Partners, PLLC



CIVIL ENGINEERS • LAND SURVEYORS • LANDSCAPE ARCHITECTS

3111 WALL STREET

LEXINGTON, KENTUCKY 40513

PHONE (859) 296-9889

WWW.EAPARTNERS.COM