



## Katie Pentecost, LA, LEED BD+C

Ms. Pentecost is a Registered Landscape Architect with over 11 years experience in landscape architecture, master planning, site design, and construction administration and construction inspection. She has a variety of experience on projects including campus master planning, streetscape design, park and athletic facilities, pedestrian and bike trail design, landscape plans, primary and secondary education facilities, stream and watershed restoration, sanitary construction inspection, and corridor management planning within the public and private sectors.

### RELATED EXPERIENCE

**Chevy Chase Streetscape Master Plan Lexington, KY** – Assisted in the development of graphics related to 3 different options for streetscape designs for the proposed Chevy Chase Streetscape. The design options included rain gardens, public art displays, decorative pavers, site furnishings, and medians with landscaping and parking lots with permeable pavers.

**Campton Streetscape, Campton, KY** – Project Manager for the design and construction of the Campton Streetscape Project. Duties included the preparation of construction documents, meetings with Wolf County Industrial Board, coordination with KYTC District 10, and construction administration.

**Kentucky Horsepark Outdoor Arena Lexington, KY** – Assisted on the site development in the construction administration phase of the project. Site work components included plaza area with sculpture, walks, stairs, planters, asphalt, and arena floor with synthetic surface, fencing, benches, bollards, and new rubber pavers for horse traffic.

### EDUCATION

- University of Kentucky, B.S. Landscape Architecture (2002)

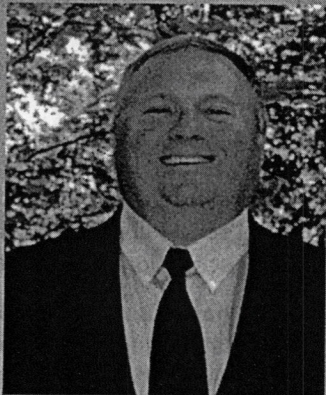
### EXPERIENCE – 11 YEARS

### PROFESSIONAL AFFILIATIONS

- United States Green Building Council Member

### SPECIALIZED TRAINING

- Carlson Civil-Suite 2014
- Adobe Photoshop



## Mitch Estes, PLS

Mitchell Kent Estes brings 22 years of land surveying experience to the project team. Mr. Estes has experience in construction staking for roadways, subdivisions, and land development and has completed topographic surveys for the design of said projects. He also has experience with land surveying projects for the U.S. Army Corp of Engineers and for Environmental Superfund sites.

### RELATED EXPERIENCE

**N. Limestone, N. Upper Street, Sixth Street Topographic Survey (KAWC), Lexington, KY** – Surveying Party Chief providing GPS and conventional surveying services associated with approximately 12,000 linear feet of project corridor along N. Limestone and N. Upper Street from Upper Street to Seventh Street and along Sixth Street from N. Broadway to Pemberton Street for the planned waterline replacement project for Kentucky American Water Company. The project included significant utility coordination to properly locate and identify the existing infrastructure in this urban corridor.

**US-60 (Versailles Road) Fayette County, KY** – Surveying Party Chief providing GPS Field Surveying services for Pavement Rehabilitation along Versailles Road near downtown Lexington. Responsibilities include the location and documentation of existing drainage, guardrail, pavement, and signage infrastructure throughout the roadway corridor.

**Bob-O-Link Trunk Sewer Replacement (LFUCG), Lexington, KY** – Land Surveyor and CAD drafter responsible for the topographic survey utilized for the planning and design of the sanitary sewer line. Responsibilities also included the creation of easement plats necessary for the easement acquisition within 23 private properties within the project corridor.

### EDUCATION

- Morehead State University (1985)

### EXPERIENCE – 22 YEARS

### PROFESSIONAL REGISTRATIONS

- PLS– KY 3345

### SPECIALIZED TRAINING

- GPS (Global Positioning System)
- RTK Surveying





## Brittany Stewart, EIT

### RELATED EXPERIENCE

**New Circle Road (KY 4), Fayette County, KY** – Project Engineer for the widening of New Circle Road. Responsibilities included developing pavement details sheets for the interchange at New Town Pike and New Circle Road. Other duties included designing the signage plans for the entire corridor of New Circle from Leestown Road to Broadway intersection.

**KY 7, Morgan County, KY** – Project Engineer for the reconstruction of KY 7 in Morgan County, KY. Responsible for the analyzing existing conditions, assisting with roadway alignments, refining the alignments for maintenance of traffic, performing the models for various alignments and cost estimates.

### EDUCATION

- University of Kentucky, B.S. Civil Engineering (2011)
- University of Kentucky, M.S. Civil Engineering (2013)



## Bill Lester, EIT

### RELATED EXPERIENCE

**Bob O Link Trunk Sewer Replacement Project (LFUCG), Lexington, KY** - Project Engineer currently assisting with the planning, coordination, design, contract document preparation, and construction administration of approximately 6,500 lineal feet of trunk sewer in the Wolf Run Sewershed. Responsibilities also include assistance with Kentucky Infrastructure Authority (KIA) administration and easement plat preparation for 23 private properties within the project corridor. Significant utility and public involvement coordination has taken place on this project particularly with the proposed reconstruction of Shaker Drive due to the new sanitary sewer alignment.

**KY-3, Henderson County, KY** – Project Engineer for the design of drainage infrastructure including culverts and crossing pipes for the proposed road widening. Responsible for drainage analysis and preparation and coordination of all CAD files.

### EDUCATION

- University of Kentucky, B.S. Civil Engineering (2005)
- University of Kentucky, M.S. Civil Engineering (2010)

### EXPERIENCE – 5 YEARS



## Brett Malloy, EIT

### RELATED EXPERIENCE

**US 127, Russell County, KY** – Project Engineer for the preliminary drainage analysis for the proposed Section 3 improvements along US 127 near Jamestown, Kentucky. Responsibilities have included delineation of watersheds to be use in the storm water analysis for culvert sizing.

**Beaver Road / McCoy's Fork Road Improvements Study, Boone County, KY** – Project Engineer assisting with the preliminary engineering study to review the potential improved trucking access alternatives associated with the existing Bavarian Landfill located on McCoys Fork Road near Walton, Kentucky. Responsibilities include evaluating horizontal and vertical alignment alternatives for conformance to the AASHTO Green Book and KYTC Roadway Design Standards.

### EDUCATION

### EXPERIENCE – 1 YEAR

- University of Kentucky, B.S. Civil Engineering (2011)
- University of Kentucky, M.S. Civil Engineering (2013)





# CLIENT CONTACTS

INTEGRATED ENGINEERING

**PROJECT NAME:** Tates Creek Road Sidewalk Improvements Project

**CLIENT NAME:** Lexington-Fayette Urban County Government

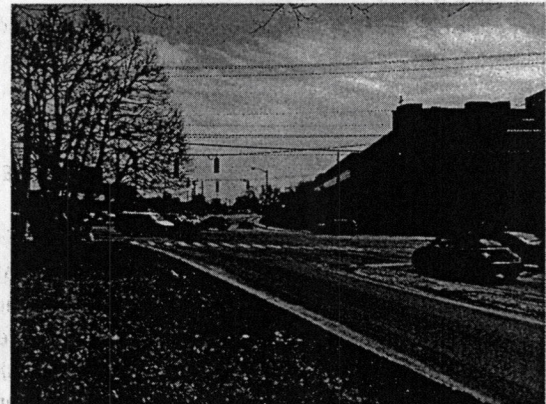
**CONTACT:** Keith Lovan, PE, PLS  
Division of Engineering  
101 East Vine Street; 4th Floor  
Lexington, KY 40507  
859-258-3410  
klovan@lexingtonky.gov



**PROJECT NAME:** Harrodsburg Road Intersection Improvements Project

**CLIENT NAME:** Lexington-Fayette Urban County Government

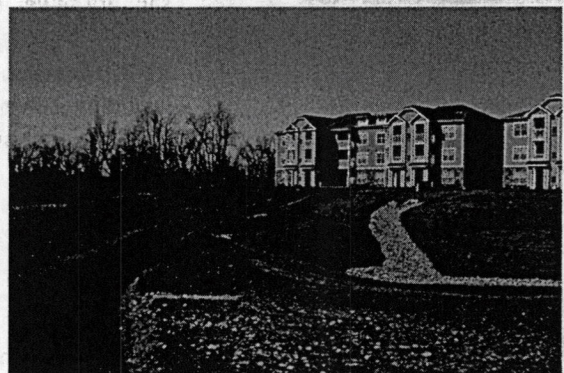
**CONTACT:** Bob Bayert, PE  
Division of Engineering  
101 East Vine Street; 4th Floor  
Lexington, KY 40507  
859-258-3410  
bobb@lexingtonky.gov



**PROJECT NAME:** Townley Trail

**CLIENT NAME:** Anderson Communities

**CONTACT:** Mike Craft, PE  
Anderson Communities  
1720 Sharkey Way  
Lexington, KY 40511  
859-509-4870  
mike@andersoncommunities.com



**PROJECT NAME:** Watterson Trail Multi-Use Path

**CLIENT NAME:** City of Jeffersontown

**CONTACT:** Matt Meunier  
City Planner  
City of Jeffersontown  
10416 Watterson Trail  
Jeffersontown, KY 40299  
502-267-8333  
mmeunier@jeffersontownky.com





**TATES CREEK ROAD SIDEWALK IMPROVEMENTS PROJECT**

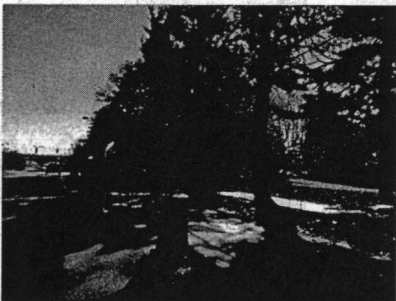
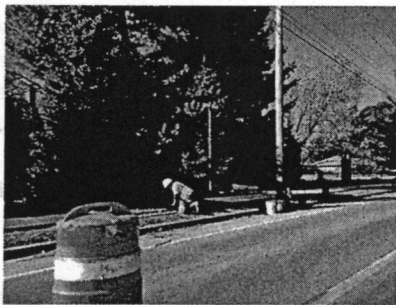
Lexington, Kentucky

CLIENT: Lexington-Fayette Urban County Government

DATE: 2011 - 2013

SERVICES PROVIDED: Engineering Design

PROJECT CONSTRUCTION COST: \$1,700,000



The staff of Integrated Engineering managed the design and public involvement effort on the Tates Creek Road Sidewalk Improvements Project for Lexington-Fayette Urban County Government. The scope of this CMAQ funded project included the full design of the integration of approximately 16,000 linear feet of sidewalks on both sides of Tates Creek Road from inside of Alumni Drive outbound to the Lansdowne Shopping area. Five existing signalized and twelve existing non-signalized intersections have been modified to accommodate pedestrian access. Streetscape design was also a design element along different portions of the project corridor, particularly in areas where existing landscaping will be modified or removed to accommodate the new sidewalk. A significant public involvement initiative has taken place on this project with area residents, business owners, and churches. The design followed current state and federal Local Public Agency (LPA) guidelines. Coordination has also been made with utility companies to determine any potential construction conflicts and needed relocations. Coordination with LEXTRAN has been made to determine optimal bus stop and shelter locations. This project is currently in the final stages of construction with 100% completion in the Spring of 2014.



**HARRODSBURG ROAD INTERSECTION IMPROVEMENTS PROJECT**

Lexington, Kentucky

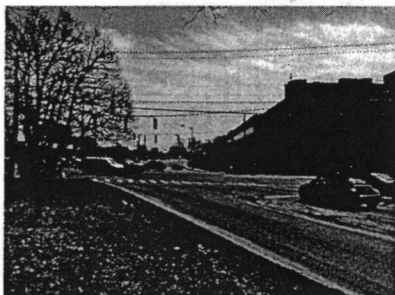
CLIENT: Lexington-Fayette Urban County Government

DATE: 2012 - Current

SERVICES PROVIDED: Surveying & Engineering Design

ESTIMATED PROJECT CONSTRUCTION COST: \$150,000

Integrated Engineering is currently working with Lexington-Fayette Urban County Government on the redesign of the intersection of Harrodsburg Road with Waller Avenue & Mason Headley Road. This intersection does not meet the ADA & PROWAG guidelines for pedestrian access. Design includes relocating utilities, construction of sidewalks & ramps, relocation of existing infrastructure, stripping plans and signal design for pedestrians.





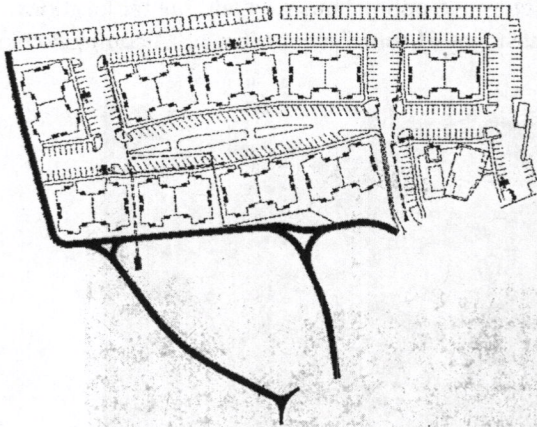
**TOWNLEY TRAIL**  
Lexington, Kentucky

CLIENT: Anderson Communities

DATE: 2009

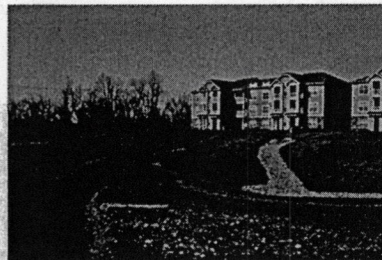
SERVICES PROVIDED: Engineering Design & Construction Administration

PROJECT CONSTRUCTION COST: \$100,000



This shared use trail was designed by Integrated Engineering for Anderson Communities. It is located off Leestown Road at the Townley Center. This is a mixed use community comprising of residential and commercial use. The trail was designed to connect the area neighborhood with the proposed park and mixed use development and will eventually be connected with the Town Branch Trail to form a part of a larger trail system. The trail was designed to accommodate the existing utilities without any needed relocations. These included electric, telephone, storm and sanitary sewer systems. Segments of the terrain were steeper than desirable; four plank fences were utilized as a safety measure to mitigate the steep slopes for the pedestrians and the cyclists.

The shared use trail was designed to conform with the AASHTO design guidelines for mixed use trail. The proposed cross section for the trail included 8ft wide pavement with 2ft shoulders on both sides of the path. A 3ft clear zone from the edge of the shoulder was maintained and the design speed for shared use path was 15mph. The horizontal and vertical curves were designed to meet the design speed criteria. Integrated Engineering worked closely with Keith Lovan with LFUCG to ensure the trail would be compatible with trail systems planned through out Kentucky.



**WATERSON TRAIL MULTIUSE PATH**  
Jeffersontown Kentucky

CLIENT: City of Jeffersontown

DATE: 2012

SERVICES PROVIDED: Engineering Design

PROJECT CONSTRUCTION COST: \$600,000

Integrated Engineering served as a sub-consultant for the design, LPA coordination, and construction administration for this CMAQ funded design and construction project. The scope of this project included the design for a 1.5 mile multiuse path to connect multiple neighborhoods and other parts of the existing trail system to the downtown city center currently under revitalization, along Watterson Trail (a local and state road). Services included evaluating alternative alignments and making recommendations for drainage improvements. Construction drawings were completed that included (2) major stream crossings with pedestrian bridges, the extension of existing culverts and replacement of headwalls, connections to neighborhoods, modifying drainage patterns along Watterson Trail, identifying major road crossing locations, providing ADA approved ramps, and identifying "share-the-road" areas. This design project was prepared in accordance with Local Public Agency (LPA) requirements.

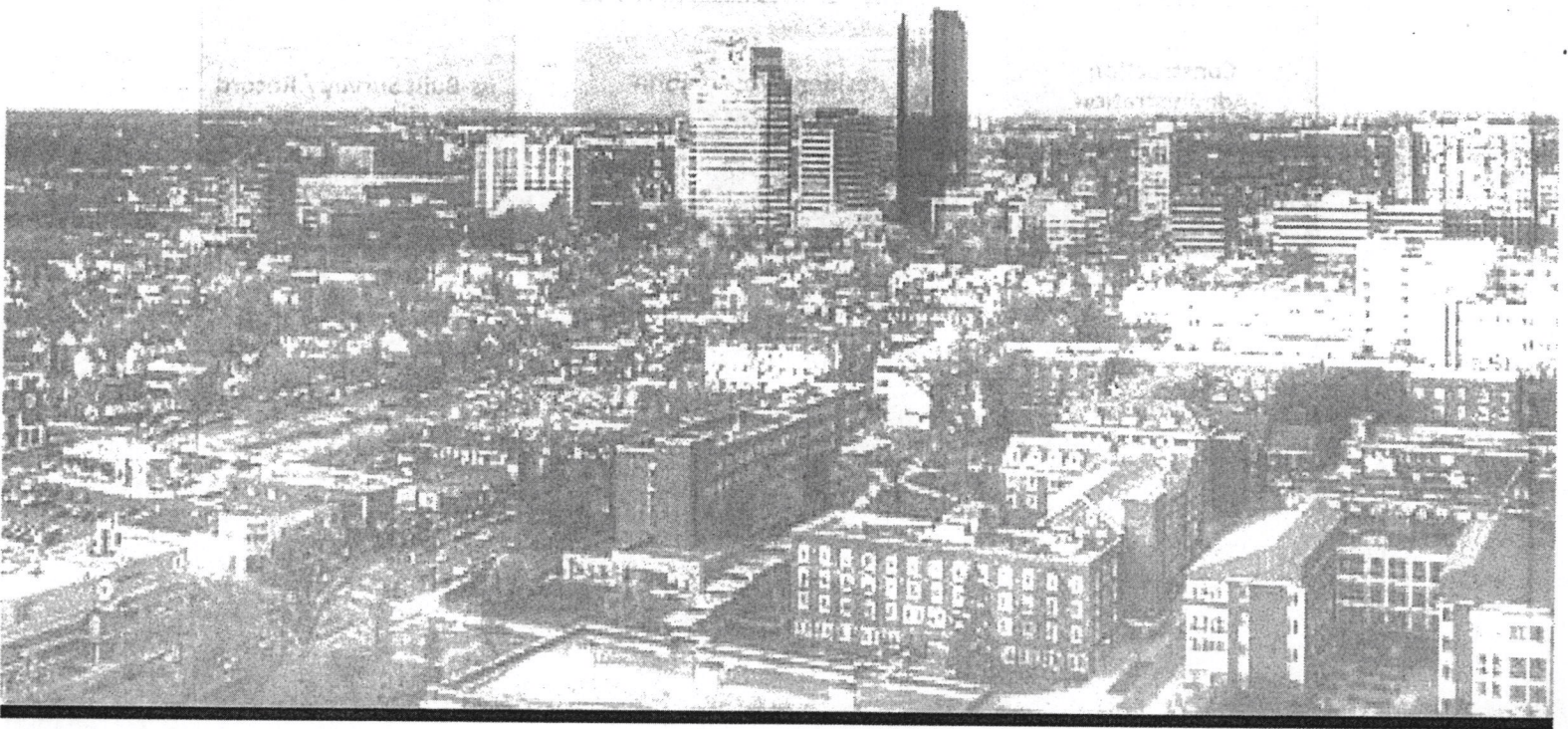




**IE**

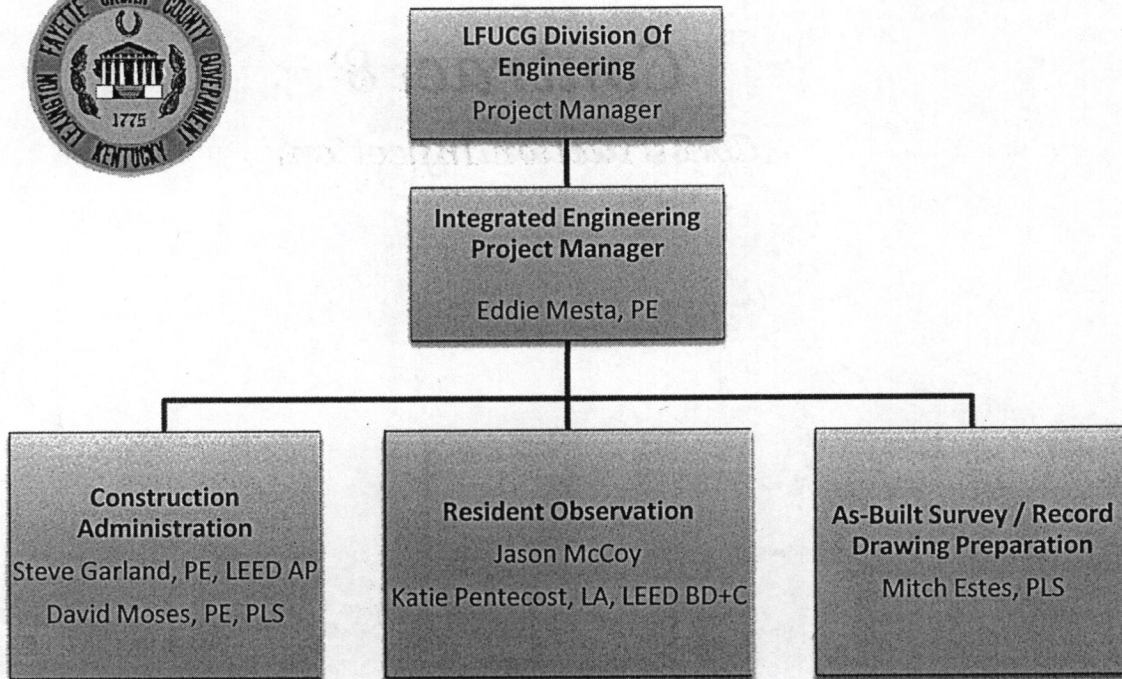
INTEGRATED ENGINEERING

*Contract 8*  
*Construction Inspection*

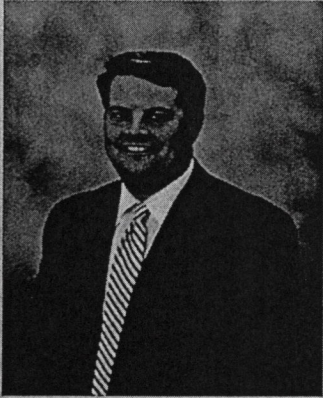


*STATEMENT OF QUALIFICATIONS*









## Eddie Mesta, PE

Eddie Mesta, PE will be the project manager over the construction inspection services for LFUCG. Over his 18 years of experience Eddie has been involved in both the engineering design and construction sectors. From 2004 to 2008 Eddie worked for Sherman Dixie Concrete where he was their technical engineer for projects in Kentucky, Indiana, and Ohio. During this time Eddie gained valuable construction related experience with assistance to engineers and contractors with the use of precast concrete structures on projects across the region. Since 2008 Eddie has been a project manager for numerous infrastructure projects for LFUCG and other clients across the region. In nearly all of these projects he has provided the needed construction administration oversight for LFUCG.

### EDUCATION

- University of Kentucky, B.S. Civil Engineering (1995)

### EXPERIENCE – 18 YEARS

### PROFESSIONAL REGISTRATIONS

- PE – KY 22048
- PE – IN 10200289
- PE – TN 00107842

### PROFESSIONAL AFFILIATIONS

- Kentuckians for Better Transportation (KBT)
- Kentucky Society of Professional Engineers (KSPE) - *Current Past President*

### SPECIALIZED TRAINING

- KYTC Partnering Conference 2011-2013
- LPA Project Guide Training, 2012
- KYTC Basic Traffic Engineering Design Course, 2012
- KSPE Annual Conference 2010-2013
- Designing Streets for Pedestrian Safety, 2009
- Designing Streets for Bicycle Safety, 2009
- KYTC Traffic Impact Study Training

### RELATED EXPERIENCE

**LFUCG Division of Water Quality Resident Project Representation (RPR) Services**, Lexington, KY - Project Manager currently overseeing the coordination of Integrated Engineering's component of LFUCG's RPR services associated with the implementation line work component of the current Remedial Measures Plan (RMP).

**Bob O Link Trunk Sewer Replacement Project (LFUCG)**, Lexington, KY - Project Manager currently overseeing the planning, coordination, design, contract document preparation, and construction administration of approximately 6,500 lineal feet of trunk sewer in the Wolf Run Sewershed. Responsibilities have included oversight of the easement plat preparation and easement acquisition services for 23 private properties within the project corridor that included preparation and execution of the required Memorandum of Understanding and Grant of Easement documents. Currently overseeing the construction administration phase, which includes being the coordination liaison between LFUCG DWQ and the contractor.

**Perimeter Park Stormwater Improvements Project (LFUCG)**, Lexington, KY - Project Manager for the planning and design of a proposed storm sewer system that is to be retrofitted through 4 properties to convey stormwater to an existing detention basin. This project has been designed to LFUCG standards is being completed to alleviate erosion and flooding in the vicinity. Responsibilities will include oversight of the construction administration phase of the project.

**Cardinal Lane Storm and Sanitary Improvements Project (LFUCG)**, Lexington, KY - Project Manager responsible for oversight of the design of approximately 140 lineal feet of 4' x 4' Reinforced Box Culvert and an 18" storm sewer system. Responsibilities also oversight of the construction administration phase of the project.

**Lexington Mall Sanitary Sewer Relocation Project (LFUCG)**, Lexington, KY - Project Manager for the relocation of over 1,500 linear feet of sanitary sewer trunk line associated with the redevelopment of the Lexington Mall property. The project involved upsizing the existing 15" diameter trunk line to 24" to provide additional capacity in this SSO prone area. Responsibilities also included oversight of the construction administration phase of the project.

**Sherman Dixie Concrete, Technical Engineer.** Responsibilities included providing technical expertise on Pre-cast Sanitary and Storm Structures to municipalities across Kentucky, Indiana and Ohio. Expertise included proper manhole and structure sizing, as well as assisting in structural design issues resulting from deep burials to heavy live loads. Assisted municipalities and their consultants on corrosion, CSO, SSO, and storm water quality related projects. Assisted engineers in the design of numerous pump station projects. Assistance included proper wet well and vault sizing as well as buoyancy calculations and cost estimates.





## Steve Garland, PE, LEED AP

Steve Garland will provide the necessary construction administration assistance for any of the needed LFUCG DOE projects. Steve's related experience includes the following:

### RELATED EXPERIENCE

**Tates Creek Road Sidewalk Project (LFUCG), Lexington, KY** – Project Engineer for the site/civil engineering, surveying and streetscape layout for the design of over 16,000 linear feet sidewalks for both sides of Tates Creek Road from inside of Alumni Drive outbound to the Lansdowne Shoppes area. The design followed state and federal Local Public Agency (LPA) guidelines. Responsibilities also included contract document / specifications preparation and assistance with construction administration.

**Lexington Mall Sanitary Sewer Relocation Project (LFUCG), Lexington, KY** - Project Engineer for the relocation of over 1,500 linear feet of sanitary sewer trunk line associated with the redevelopment of the Lexington Mall property. The project involved upsizing the existing 15" diameter trunk line to 24" to provide additional capacity in this SSO prone area. Responsibilities also included assistance with the construction administration phase of the project.

**Pine Meadow Road Bank Stabilization Project (LFUCG), Lexington, KY** - Project Engineer for the survey and design of a Rosetta Stone Segmental Wall system along Vaughn's Branch near Pine Meadow Road. Responsibilities also included the application and approval of USACE and KDOW stream permits as well as construction administration.

**Blue Grass Airport Westside T-Hangar Project, Lexington, KY** - Project Engineer involved in preparing the overall site, grading and drainage, and utility plan preparation. Responsibilities also have included assistance with contract document preparation and construction administration.

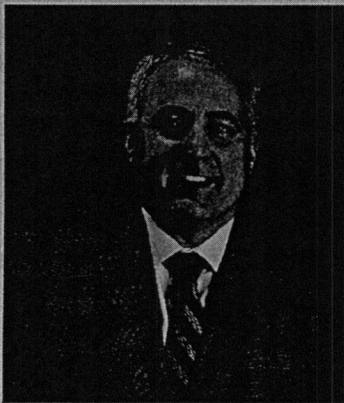
### EDUCATION

- University of Kentucky, B.S. Civil Engineering (1998)

### EXPERIENCE – 16 YEARS

### PROFESSIONAL REGISTRATIONS

- PE – KY 23980
- PE – IN 0606247
- PE – TN 110877
- CFM - Certified Floodplain Manager
- LEED AP - LEED Accredited Professional



## David Moses, PE, PLS

Providing construction administration assistance to the project team would be David Moses, PE, PLS. David's career includes a wide array of experience ranging from the public sector to private sector. He has experience in project management, highway design, digital terrain modeling, storm sewer systems, culverts, bridge hydraulics, flood plain analysis, right of way, utilities, environmental regulations, construction procurement, design of large and small residential and commercial sites, and production of plans and contract documents.

### RELATED EXPERIENCE

**Assistant State Highway Engineer, Kentucky Transportation Cabinet** - Coordinated Local Public Agency Projects (LPA) for KYTC. Worked with local governments and elected officials to assist them in navigating KYTC and Federal regulations pertaining to their projects. Provided guidance in the areas of environmental, right of way, utilities, design and construction procurement. Worked with all divisions within KYTC.

**Construction Inspector, Kentucky Transportation Cabinet** - Served as a construction inspector on resident engineer crews in Whitley and Madison Counties. Inspected roadway grading, paving, bridge foundations, substructure construction, beam setting, bridge deck concrete work and structure demolition. Performed various materials testing activities including slump and air tests for concrete, preparation of concrete cylinders for compressive strength tests and collected other materials for testing in accordance with the KYTC Materials Field Sampling manual.

### EDUCATION

- University of Kentucky, M.S. Civil Engineering (2002)
- University of Kentucky, B.S. Civil Engineering (1993)

### EXPERIENCE – 20 YEARS

### PROFESSIONAL REGISTRATIONS

- PE – KY 20154
- PLS – KY 3866





## Katie Pentecost, LA, LEED BD+C

Providing any needed construction inspection experience will be Katie Pentecost. Ms. Pentecost is a Registered Landscape Architect with over 11 years experience in landscape architecture, master planning, site design, and construction administration and construction inspection. She has a variety of experience on projects including campus master planning, streetscape design, park and athletic facilities, pedestrian and bike trail design, landscape plans, primary and secondary education facilities, stream and watershed restoration, sanitary construction inspection, and corridor management planning within the public and private sectors.

### RELATED EXPERIENCE

**Irvine Municipal Utilities Pump Station and Force Main Irvine, KY** – Construction Inspector for the installation of over 3,000 linear feet of 10" gravity line, force main, and manhole structures. The work included a 300' directional bore under the Kentucky River, and two other bores under HWY 52 and HWY 499.

**Kentucky 11 Utility Relocations Mt. Sterling, KY** – Assisted on the construction inspection for replacement of 4,000 linear feet of 8" and 12" gravity sewer and installation of new manholes along KY 11.

**City of Lebanon Sanitary Sewer Master Plan Lebanon, KY** – Prepared Master Plan sanitary sewer maps for the city of Lebanon as part of larger master plan document to show the existing systems, and the proposed replacements needed in the near future. Additional mapping showed proposed infrastructure for the expanding areas of the city.

### EDUCATION

- University of Kentucky, B.S.  
Landscape Architecture (2002)

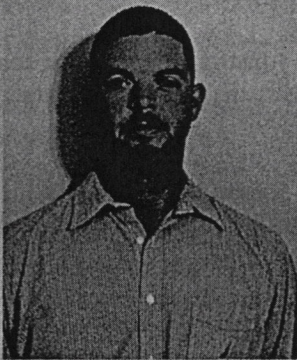
### EXPERIENCE – 11 YEARS

### PROFESSIONAL AFFILIATIONS

- United States Green Building Council Member

### SPECIALIZED TRAINING

- LFUCG DWQ Erosion Control Training (September 2013)



## Jason McCoy

Providing any needed construction inspection assistance is Jason McCoy. Jason has had a diverse experience in the municipal and construction related sectors. His recent project management experience has given Jason a strong understanding of proper construction procedures.

### RELATED EXPERIENCE

**Bob O Link Trunk Sewer Replacement Project (LFUCG), Lexington, KY** - Resident Project Representative currently overseeing the construction of approximately 6,500 lineal feet of trunk sewer in the Wolf Run Sewershed. Responsibilities include preparation of daily inspection logs, weekly communication reports, and erosion control documents in accordance with LFUCG DWQ requirements.

**Keeton Enterprises, Richmond KY** - Project Manager and Assistant Estimator, responsible for the planning of jobs out from start to finish, scheduling, installation of storm, sanitary sewers, water lines gas lines, electrical conduits as well as working with engineers in figuring out problems and how to solve them in order to get the job done in the best and most cost efficient ways. Worked with sub-contractors to keep good relations in between certain aspects of the jobs in order to get the job completed in a timely manner. Also responsible for dealing with safety issues to ensure an employee safe working environment.

### EDUCATION

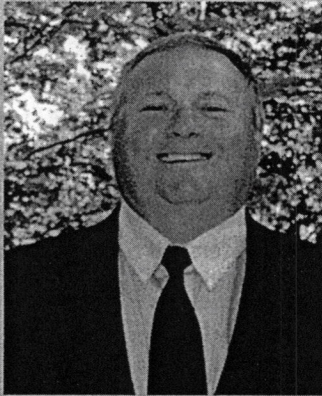
- Morehead State University, B.S.  
General Studies (2003)

### EXPERIENCE – 10 YEARS

### SPECIALIZED TRAINING

- LFUCG DWQ Erosion Control Training (September 2013)





## Mitch Estes, PLS

Mitchell Kent Estes brings 22 years of land surveying experience to the project team. Mr. Estes has experience in as-built drawing and record plat preparation for public and private clientele across the state. Mr. Estes has a Bachelor's Degree in University Studies with an emphasis in Mathematics from Morehead State University. A former mathematics teacher, he is a Professional Land Surveyor licensed in Kentucky. Mr. Estes started his surveying career with Tom Price & Associates. With this firm, Mr. Estes worked primarily on the survey field crew on construction staking for highway road projects. While at PEH (Strand) Engineers and Quest (HDR Engineering) Mr. Estes worked primarily as a survey crew chief and land surveyor on various projects such as residential subdivision design, storm / sanitary sewer design and layout, and roadway projects. Prior to his employment with Integrated Engineering Mr. Estes worked with Curd Surveying in Morehead, Kentucky where the firm specialized in clients with land boundary disputes.

### EDUCATION

- Morehead State University (1985)

### EXPERIENCE – 22 YEARS

### PROFESSIONAL REGISTRATIONS

- PLS– KY 3345

### SPECIALIZED TRAINING

- GPS (Global Positioning System)
- RTK Surveing

### RELATED EXPERIENCE

**Bob-O-Link Trunk Sewer Replacement (LFUCG), Lexington, KY - Land Surveyor and CAD drafter** responsible for the topographic survey utilized for the planning and design of the sanitary sewer line. Responsibilities also included the creation of easement plats necessary for the easement acquisition within 23 private properties within the project corridor.

**Cardinal Lane Stormwater Improvements Project (LFUCG), Lexington, KY - Land Surveyor and CAD drafter** responsible for the topographic survey utilized for the planning and design of the proposed stormwater improvements. Responsibilities also included the creation of record drawings for the project.

**US-127 Franklin County, KY - Instrument man** for construction staking associated with the grade, drain, and surface construction of approximately 1 mile of US 127 from US 421 to north of Peaks Mill Road.

**US-127B (Danville – US 127 Bypass) Boyle County, KY - Instrument man** for construction staking associated with the grade, drain, and surface construction of approximately 3.3 miles of US 127B (Danville Bypass).

**Town Branch Sanitary Sewer Rehabilitation and Pump Station Project (LFUCG), Lexington, KY – Survey Crew Chief** responsible for the topographic survey utilized for the planning and design of the Town Branch Pump Station and Sanitary Sewer Line.

**East Lake Sanitary Sewer Replacement, Lexington, KY - Land Surveyor and CAD drafter** responsible for the topographic survey utilized for the planning and design of the Sanitary Sewer Line in Lexington, Ky.

**Century Hills Sanitary Sewer Replacement, Lexington, KY - Land Surveyor and CAD drafter** responsible for the topographic survey utilized for the planning and design of the Sanitary Sewer Line in Lexington, Ky.

**I-24 Pavement Rehabilitation Survey, Christian, Trigg, Lyon, Marshall, & McCracken Counties, KY – Surveying Party Chief** providing GPS Field Surveying services for Pavement Rehabilitation along I-24 in Western Kentucky. Responsibilities include the location and documentation of existing drainage, guardrail, pavement, and signage infrastructure throughout a 51 mile section of I-24.



**PROJECT NAME:** RMP Resident Project Representative Services

**CLIENT NAME:** Lexington-Fayette Urban County Government DWQ

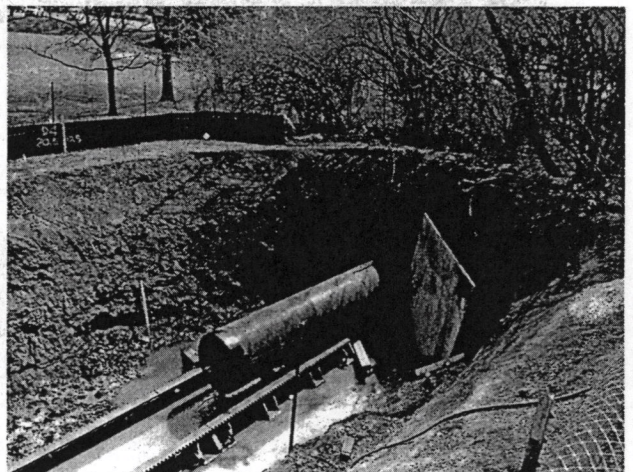
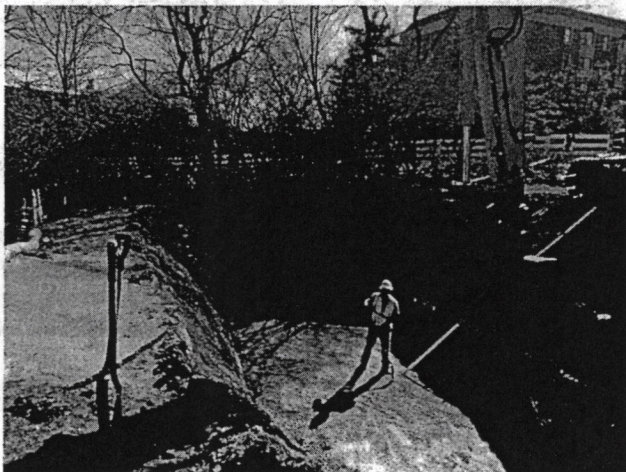
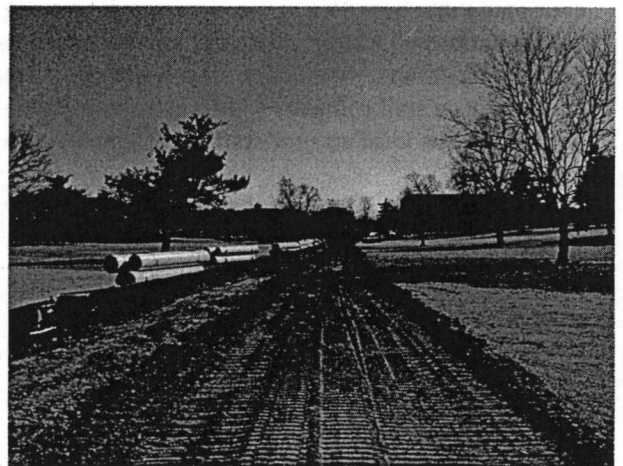
**DATE:** 2013 – Current

**SERVICES PROVIDED:** Construction Inspection

**PROJECT CONSTRUCTION COST:** N/A

**CONTACT:** Vernon Azevedo, PE  
Remedial Measures Program Manager  
Lexington-Fayette Urban County Govt.  
Division of Water Quality  
125 Lisle Industrial Avenue; Suite 180  
Lexington, KY 40511  
859-425-2438  
wazevedo@lexingtonky.gov

Integrated Engineering is currently one of two engineering consultants chosen by LFUCG’s Division of Water Quality to perform Resident Project Representative (RPR) services associated with the implementation sanitary sewer line work component of the current Remedial Measures Plan (RMP). Integrated Engineering currently has three RPRs that have been trained by LFUCG for erosion control inspection. RPR Responsibilities include preparation of daily inspection logs, weekly communication reports for necessary public notices, and erosion control documents in accordance with LFUCG DWQ requirements.



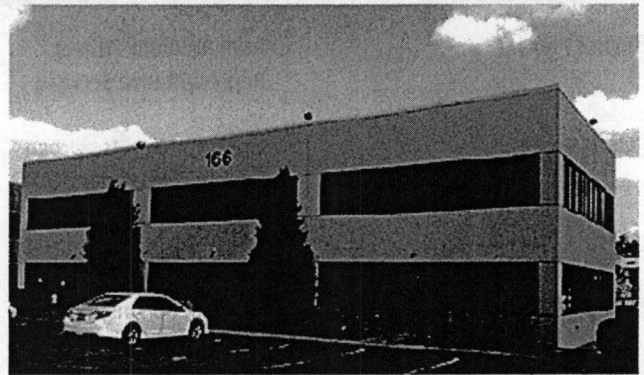


# STATEMENT OF LOCAL OFFICE

Integrated Engineering's local corporate office is located in close proximity to LFUCG's Division of Engineering. Our headquarters is conveniently located near the intersection of Richmond Road and Man O' War Boulevard. Therefore, we can conveniently travel downtown to meetings at the LFUCG's Division of Engineering offices located on Vine Street or project sites throughout the city. Our sub-consultants: Thelen Associates and Palmer Engineering also have established local offices with several employees with experience in working with the Division of Engineering. It should also be noted that 100% of our key project personnel reside in Fayette County. Below you will find a completed local office utilization chart of our entire project team where it is anticipated that over 95% of the potential future work with LFUCG will be performed locally. It should also be noted that Integrated Engineering has additional professional, technical, and administrative staff company wide if extra manpower is needed on a project. Our local current staff of 12 employees consist of the following:

- ♦ 4 Professional Engineers
- ♦ 2 Professional Land Surveyors
- ♦ 1 Professional Landscape Architect
- ♦ 3 Engineers in Training
- ♦ 1 Engineering Technician
- ♦ 1 Construction Inspector
- ♦ 1 Administrative Assistant

With our current local staff Integrated Engineering has over 50% additional capacity to work on LFUCG DOE projects. The technical capabilities of our key personnel will provide LFUCG's Division of Engineering the resources it needs for successful project delivery.



**Integrated Engineering's Lexington, KY Headquarters**  
166 Prosperous Place, Suite 220

### Degree of Local Employment for Key Project Personnel

Name	Local Employee	Local Resident
David Moses, PE, PLS	✓	✓
Harsha Wijesiri, PE	✓	✓
Eddie Mesta, PE	✓	✓
Steve Garland, PE, LEED AP	✓	✓
Katie Pentecost, LA, LEED BD+C	✓	✓
Mitch Estes, PLS	✓	✓
Brittany Stewart, EIT	✓	✓
Bill Lester, EIT	✓	✓
Brett Malloy, EIT	✓	✓
Jason McCoy	✓	
<b>Totals</b>	<b>10</b>	<b>9</b>

Prime Consultant	Location	Date Office Established	Total Number of Employees	No. of Employees Expected to Work on DOE Projects
<b>Integrated Engineering</b>				
Headquarters	Lexington, Kentucky	2006	11	10
Local Office	Lexington, Kentucky	2006	11	10
Project Manager Location	Lexington, Kentucky			

Subconsultants	Location	Date Office Established	Total Number of Employees	No. of Employees Expected to Work on DWQ Projects
<b>Thelen Associates</b>				
Service Provided	Geotechnical Exploration & Design			
Headquarters	Erlanger, Kentucky	1971	90	10
Local Office	Lexington, Kentucky	2009	8	8
<b>Palmer Engineering</b>				
Service Provided	Environmental & Structural			
Headquarters	Winchester, Kentucky	1969	51	12
Local Office	Lexington, Kentucky	2007	4	4

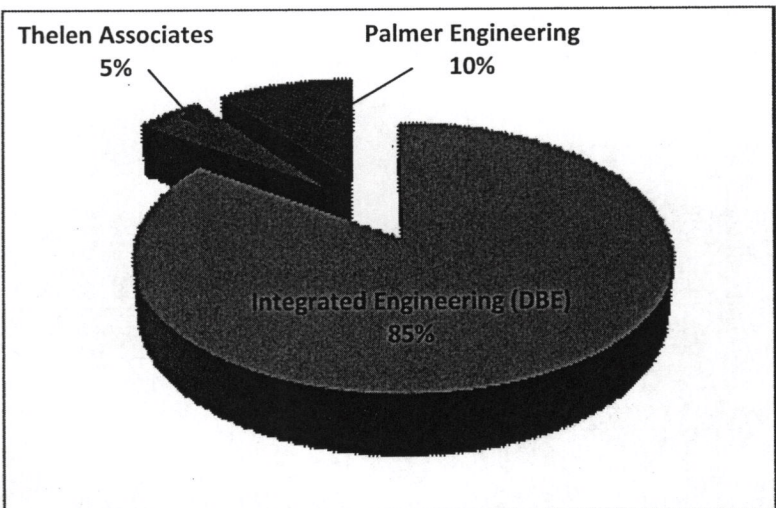




INTEGRATED ENGINEERING

# DBE INVOLVEMENT

Integrated Engineering is currently listed as a Disadvantaged Business Enterprise (DBE) with Lexington-Fayette Urban County Government (LFUCG). We are also certified as a DBE with the Kentucky Transportation Cabinet, Louisville Metro, and the National Minority Supplier Council, Inc. (NMSDC). Thus, if the Integrated Engineering Team is selected as a pre-qualified consultant with LFUCG's Division of Engineering, then nearly 85% of our Team's professional services will be performed by DBEs, which far exceeds LFUCG's DBE goal of 10%.



Projected DBE Participation Goals for LFUCG DOE Projects



Integrated Engineering strives to be a valuable resource to our clients whether it be in a prime or sub consultant role. We are well equipped with the proper staffing and resources for the category of work outlined in this RFQ. Over the past few years we have proven this with the successful projects that we have completed as both a prime and sub consultant for LFUCG's Division of Engineering. It is our number one priority to continue to be a valuable resource to LFUCG as we both move forward to improving our community for future generations to come.





*Appendices*



*STATEMENT OF QUALIFICATIONS*





Lexington-Fayette Urban County Government  
DEPARTMENT OF FINANCE & ADMINISTRATION

Jim Gray  
Mayor

William O'Mara  
Commissioner

**ADDENDUM #1**

RFP Number: **#13-2014**

Date: March 3, 2014

Subject: **Request for Qualifications for  
Professional Engineering Services**

Please address inquiries to:  
Theresa Maynard (859) 258-3320

**TO ALL PROSPECTIVE BIDDERS:**

Please be advised of the following clarifications to the above referenced RFP:

*Paragraph two on page one should read as follows and agree with the date on the website:*

"Sealed proposals will be received in the Division of Central Purchasing, Room 338, Government Center, 200 East Main Street, Lexington, KY, 40507, until **2:00 PM**, prevailing local time, on **March 26, 2014.**"

*Paragraph one on page two should read as follows:*


**Deadline for questions after the Pre-proposal meeting shall be Tuesday, MARCH 12<sup>th</sup>, 2014 at 2:00 PM local time.**

Todd Slatin, Director  
Division of Central Purchasing

All other terms and conditions of the RFP and specifications are unchanged. This letter should be signed, attached to and become a part of your RFP.

COMPANY: Integrated Engineering, PLLC

ADDRESS: 166 Prosperous Place; Suite 220 Lexington, KY 40509

SIGNATURE OF PROPOSER: 





Lexington-Fayette Urban County Government  
DEPARTMENT OF FINANCE & ADMINISTRATION

Jim Gray  
Mayor

William O'Mara  
Commissioner

**ADDENDUM #2**

RFP Number: **#13-2014**

Date: March 7, 2014

Subject: **Request for Qualifications for  
Professional Engineering Services**

Please address inquiries to:  
Theresa Maynard (859) 258-3320

**TO ALL PROSPECTIVE BIDDERS:**

Please be advised of the following clarifications to the above referenced RFP:

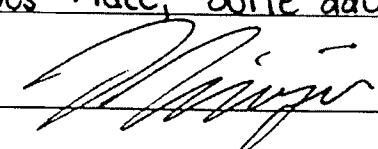
*Disregard Addendum #1 issued on this page earlier today, March 7, 2014. That addendum was for RFP #14-2014 Request for Qualifications – Supplemental Legal Services and posted to the page for RFP #13-2014 in error.*

Todd Slatin, Director  
Division of Central Purchasing

All other terms and conditions of the RFP and specifications are unchanged. This letter should be signed, attached to and become a part of your RFP.

COMPANY: Integrated Engineering, PLLC

ADDRESS: 166 Prosperous Place; Suite 220 Lexington, KY 40509

SIGNATURE OF PROPOSER: 





Lexington-Fayette Urban County Government  
DEPARTMENT OF FINANCE & ADMINISTRATION

Jim Gray  
Mayor

William O'Mara  
Commissioner

**ADDENDUM #3**

RFP Number: **#13-2014**

Date: March 17, 2014


Subject: **Request for Qualifications for  
Professional Engineering Services**

Please address inquiries to:  
Theresa Maynard (859) 258-3320

**TO ALL PROSPECTIVE BIDDERS:**

Please be advised of the following clarifications to the above referenced RFP:

- Sign in sheets from March 10<sup>th</sup>, 2014 Pre-Proposal Meeting attached
- Questions and Answers attached

  
Todd Slatin, Director  
Division of Central Purchasing

All other terms and conditions of the RFP and specifications are unchanged. This letter should be signed, attached to and become a part of your RFP.

COMPANY: Integrated Engineering, PLLC

ADDRESS: 166 Prosperous Place, Suite 220; Lexington, KY 40509

SIGNATURE OF PROPOSER: 



### SIGN-IN SHEET

RFP #13-2014 Request for Qualifications for Professional Engineering Services  
March 10<sup>th</sup>, 10:00 am 101 E Vine St, Lexington KY 40507

Representative	Company Name	Phone #	Email Address
Theresa Maynard	LFUCG - Central Purchasing	258-3320	theresam@lexingtonky.gov
CHASE WRIGHT	STRAND	225-8500	chase.wright@strand.com
Mark Astin	Strand	225-8500	Mark.Astin@strand.com
MICHAEL DAVIS	STRAND ASSOCIATES	225.8500	mike.davis@strand.com
Fred Eastridge	ECSI, LLC	233-2103	feastridge@engr-services.com
Arlen Sandlin	Parsons Brinckerhoff	245-3867	sandlin@pbworld.com
Paul PARSEN	THELEN ASSOCIATES	226-0761	PPARSEN@thelensoc.com
Laura Mize	Lockner	224-4476	LMIZE@kwlockner.com
ABBIE JONES	ABBIE JONES CONSULTING	859.559.3443	abbie@abbie-jones.com
Greg Isaacs	Palmer	859 389 9293	g.isaacs@palmer.net.com
Kevin Dameron	Palmer	859.537.6657	Kdameron@palmer.net.com
MIKE MERRIMAN	SIME	859-293-5518	M.MERRIMAN@SIMEINC.COM
Megan Kendall	Bell Engineering	859-278-5412	mkendall@hkbell.com
David Schrader	Bell Engineering	859-278-5412	dschrader@hkbell.com
JUSTIN ANDERSON	HDR ENGINEERING	859-583-5732	Justin.anderson@hdrinc.com
Jihad Hallany	Vision Engineering	859-559-0516	Jhallany@visionengr.com
Ethan Buell	BFMJ, INC	859.278.5050	e.buell@bfmj.com
Nicole Povelich	BFMJ Structural Eng	859-278-5050	n.povelich@bfmj.com
BRAID FRAZIER	LFUCG ENG	859-258-3410	bfrazier@lexingtonky.gov
Jason Ainslie	L.F. Leggett	859-252-7568	jainslie@leggett.com
WALTER BOWMAN	W. Bowman Assoc.	8546190129	waltbowman@twe.com











## Questions for RFP #13-2014

Is it possible to expand somewhat on what each contract will entail. For example, contract 2 could be construed to merely entail negotiation and acquisition of properties which would not require professional engineering services. It could also be construed to require Professional surveying services. Please expand if possible.

ANSWER: At this point, the Contract descriptions must be general and fairly broad. But as an individual project is brought forward, a more detailed scope of required services will be developed for that project.

---

Is the proposal to be submitted as a single proposal or individual proposals for each contract?

ANSWER: The responses shall be a single proposal with a section for each Contract being responded to by the vendor, and clearly titled as a response to the Contract number, 1 through 8. Vendors may respond to one, some, or all Contract 1 through 8.

A listing acknowledging which of the Contract numbers the vendor's response contains shall be listed in the Table of Contents of the Vendor's Response.

If the SOQ is to be submitted as a single SOQ, should submit resumes in one tab/section for all the SOQ's or submit resumes for each individual Contract with the section covering that Contract.

ANSWER: If the vendor response contains sections for more than one of the Contracts number 1 through 8, they need to only include one set of resumes. The response for each individual Contract shall contain an organizational chart showing the individuals involved in that particular Contract response, and whose resume is included in the resume section of the total Response.

---

During the pre-proposal meeting, it was mentioned that regardless of the number of contracts you were requesting prequalification on, one document was to be submitted for all. Section 4 (page 4) of the RFQ states that each firm responding to this RFQ shall submit individual SOQ's for each project category for which they request to be prequalified. Are we to submit 1 document (with 1 master hardcopy, 7 duplicates and 1 electronic version) including information on all contracts prequalification is being requested on or are we to submit individual documents (with 1 master hardcopy, 7 duplicates and 1 electronic version) for each contract we are requesting prequalification on?

ANSWER: ONE document with sections for each contract you are responding to, with them listed in the Table of Contents. (see above)

If 1 document is to be submitted for all contracts prequalification is being requested on, are the page limits for contract specific information then multiplied by the number of contracts? For example, if we plan on submitting on 3 contracts, are we then allowed 3 pages for list of clients for which similar work has been performed in order to discuss 3 contracts or is it still a limit of 1 page? Does the same apply for qualifications for the specific type of contract, project team and list of similar projects?

ANSWER: It is still a limit of 1 page per contract response, and the same applies for qualifications, you may list the team on each section you're responding to, but you only need to submit the resumes once. (see above)



- 
1. What forms are actually required for this qualifications package? Specifically:
    - a. If our firm meets the DBE goal with our subconsultant partner(s), are we still required to fill out the Good Faith Efforts form?
    - b. Are the MWDBE substitution, MWDBE quote summary form, or subcontractor monthly payment report needed for this proposal or are they documents that would be used once under contract/letter agreement? Please confirm whether these forms should be included with our qualifications package.

ANSWER: If the vendor meets the goals for the project, firms are still required to return the Good Faith Efforts form and check all the things they did to find MWBEs for the job.

The Quote Summary Form is part of the documentation needed if the vendor does not meet the goals for the project. It is not a required form for submittals.

The Substitution Form and the Monthly Payment Report are documents that will be used by the company selected to work on the project.

2. Do the one-page resumes count against the 6-page count in section 3 Project Team? May we include these resumes as an appendix?

ANSWER: If the organizational chart varies between Contracts, provide individual charts with each Contract section. The Project Team Section (No. 3) should be held to 6 pages maximum.

3. Please confirm how many copies are needed. Page 35 of the RFP PDF says "six (8)" (contradicts), while RFP PDF page 37 indicates a total resulting in 8.

ANSWER: Re: Page 35: There are a total of EIGHT contracts being solicited in this RFQ.

The Proposer must submit one (1) master (hardcopy), (1) electronic version in PDF format on a flashdrive or CD and seven (7) duplicates (hardcopies) of their proposal for evaluation purposes.

4. Is there a maximum letter agreement/assignment amount for projects released under this contract? In other words, is it possible that LFUCG will need to advertise some projects separately from these contracts that exceed a certain dollar amount?

ANSWER: No fee cap has been set for total project assignments to any single consultant, nor has a project dollar limit been set. However, we anticipate that projects of considerable size which will utilize federal funding will need to have separate, individual RFQ's. At the other extreme, in the case of a very small project with an anticipated small consulting fee (for instance say less than \$20,000), LFUCG reserves the right to simply offer the work to the firm at the top of the list rather than ask three firms to expend inordinate resources in working up bids.



## AFFIDAVIT

Comes the Affiant, Harsha Wijesiri, and after being first duly sworn, states under penalty of perjury as follows:

1. His/her name is Harsha Wijesiri and he/she is the individual submitting the proposal or is the authorized representative of Integrated Engineering, PLLC, the entity submitting the proposal (hereinafter referred to as "Proposer").
  
2. Proposer will pay all taxes and fees, which are owed to the Lexington-Fayette Urban County Government at the time the proposal is submitted, prior to award of the contract and will maintain a "current" status in regard to those taxes and fees during the life of the contract.
  
3. Proposer will obtain a Lexington-Fayette Urban County Government business license, if applicable, prior to award of the contract.
  
4. Proposer has authorized the Division of Central Purchasing to verify the above-mentioned information with the Division of Revenue and to disclose to the Urban County Council that taxes and/or fees are delinquent or that a business license has not been obtained.
  
5. Proposer has not knowingly violated any provision of the campaign finance laws of the Commonwealth of Kentucky within the past five (5) years and the award of a contract to the Proposer will not violate any provision of the campaign finance laws of the Commonwealth.
  
6. Proposer has not knowingly violated any provision of Chapter 25 of the Lexington-Fayette Urban County Government Code of Ordinances, known as "Ethics Act."

**Continued on next page**



7. Proposer acknowledges that "knowingly" for purposes of this Affidavit means, with respect to conduct or to circumstances described by a statute or ordinance defining an offense, that a person is aware or should have been aware that his conduct is of that nature or that the circumstance exists.

Further, Affiant sayeth naught.



STATE OF Kentucky

COUNTY OF Fayette

The foregoing instrument was subscribed, sworn to and acknowledged before me  
by Harsha Wijesiri on this the 26 day  
of March, 2013.

My Commission expires: \_\_\_\_\_

SARAH VEST  
NOTARY PUBLIC  
Kentucky, State At Large  
My Commission Expires 5/4/2015  
I.D. # 442246



NOTARY PUBLIC, STATE AT LARGE



## EQUAL OPPORTUNITY AGREEMENT

### The Law

- Title VII of the Civil Rights Act of 1964 (amended 1972) states that it is unlawful for an employer to discriminate in employment because of race, color, religion, sex, age (40-70 years) or national origin.
- Executive Order No. 11246 on Nondiscrimination under Federal contract prohibits employment discrimination by contractor and sub-contractor doing business with the Federal Government or recipients of Federal funds. This order was later amended by Executive Order No. 11375 to prohibit discrimination on the basis of sex.
- Section 503 of the Rehabilitation Act of 1973 states:

*The Contractor will not discriminate against any employee or applicant for employment because of physical or mental handicap.*

- Section 2012 of the Vietnam Era Veterans Readjustment Act of 1973 requires Affirmative Action on behalf of disabled veterans and veterans of the Vietnam Era by contractors having Federal contracts.
- Section 206(A) of Executive Order 12086, Consolidation of Contract Compliance Functions for Equal Employment Opportunity, states:

*The Secretary of Labor may investigate the employment practices of any Government contractor or sub-contractor to determine whether or not the contractual provisions specified in Section 202 of this order have been violated.*

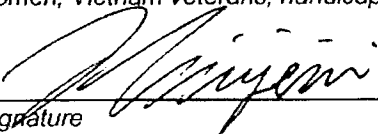
\*\*\*\*\*

The Lexington-Fayette Urban County Government practices Equal Opportunity in recruiting, hiring and promoting. It is the Government's intent to affirmatively provide employment opportunities for those individuals who have previously not been allowed to enter into the mainstream of society. Because of its importance to the local Government, this policy carries the full endorsement of the Mayor, Commissioners, Directors and all supervisory personnel. In following this commitment to Equal Employment Opportunity and because the Government is the benefactor of the Federal funds, it is both against the Urban County Government policy and illegal for the Government to let contracts to companies which knowingly or unknowingly practice discrimination in their employment practices. Violation of the above mentioned ordinances may cause a contract to be canceled and the contractors may be declared ineligible for future consideration.

Please sign this statement in the appropriate space acknowledging that you have read and understand the provisions contained herein. Return this document as part of your application packet.

### Bidders

*I/We agree to comply with the Civil Rights Laws listed above that govern employment rights of minorities, women, Vietnam veterans, handicapped and aged persons.*

  
\_\_\_\_\_  
Signature

*Integrated Engineering*  
\_\_\_\_\_  
Name of Business



**WORKFORCE ANALYSIS FORM**

Name of Organization: Integrated Engineering, PLLC

Date: 03 / 26 / 2014

Categories	Total	White		Latino		Black		Other		Total	
		M	F	M	F	M	F	M	F	M	F
Administrators	1		✓								
Professionals	15	12	2					1			
Superintendents											
Supervisors											
Foremen											
Technicians											
Protective Service											
Para-Professionals											
Office/Clerical	1		✓								
Skilled Craft											
Service/Maintenance											
<b>Total:</b>	<b>17</b>										

Prepared by: Harsha Wijesiri, President  
Name & Title



**DIRECTOR, DIVISION OF CENTRAL PURCHASING  
LEXINGTON-FAYETTE URBAN COUNTY GOVERNMENT  
200 EAST MAIN STREET  
LEXINGTON, KENTUCKY 40507**

**NOTICE OF REQUIREMENT FOR AFFIRMATIVE ACTION TO ENSURE EQUAL  
EMPLOYMENT OPPORTUNITIES AND DBE CONTRACT PARTICIPATION**

Notice of requirement for Affirmative Action to ensure Equal Employment Opportunities and Disadvantaged Business Enterprises (DBE) Contract participation. Disadvantaged Business Enterprises (DBE) consists of Minority-Owned Business Enterprises (MBE) and Woman-Owned Business Enterprises (WBE).

The Lexington-Fayette Urban County Government has set a goal that not less than ten percent (10%) of the total value of this Contract be subcontracted to Disadvantaged Business Enterprises, which is made up of MBEs and WBEs. The goal for the utilization of Disadvantaged Business Enterprises as subcontractors is a recommended goal. Contractor(s) who fail to meet such goal will be expected to provide written explanations to the Director of the Division of Purchasing of efforts they have made to accomplish the recommended goal, and the extent to which they are successful in accomplishing the recommended goal will be a consideration in the procurement process. Depending on the funding source, other DBE goals may apply.

For assistance in locating Disadvantaged Business Enterprises Subcontractors contact:

Marilyn Clark, Division of Central Purchasing  
Lexington-Fayette Urban County Government  
200 East Main Street, 3rd Floor, Room 338  
Lexington, Kentucky 40507  
[mclark@lexingtonky.gov](mailto:mclark@lexingtonky.gov)



Firm Submitting Proposal: Integrated Engineering, PLLC

Complete Address: 166 Prosperous Place, Suite 220, Lexington KY. 40509  
Street City Zip

Contact Name: Harsha Wijesiri Title: President

Telephone Number: 368-0145 Fax Number: 904-1538

Email address: Harsha@int-engineering.com

**LFUCG MBE / WBE PARTICIPATION FORM**

**RFP # 13-2014**

The MBE / WBE subcontractors listed have agreed to participate on this Bid / RFP / Quote. If any substitution is made or the total value of the work is changed prior to or after the job is in progress, it is understood that those substitutions must be submitted to Central Purchasing for approval immediately.

<b>MBE/WBE Name, Address &amp; Phone</b>	<b>Work to be Performed</b>	<b>Dollar Value of Work</b>	<b>% Value of Total Contract</b>
1. Integrated Engineering, PLLC 166 Prosperous Place Suite 220 Lexington, KY 40509  Harsha P. Wijesiri 859-368-0145	Project Management, professional land surveying, engineering design, construction document preparation, and construction administration.	To Be Determined	85%
2.			
3.		\$	%
4.		\$	%

The undersigned company representative submits the above list of MBE / WBE firms to be used in accomplishing the work contained in this Bid / RFP / Quote. Any misrepresentation may result in the termination of the contract and / or be subject to applicable Federal and State laws concerning false statements and false claims.

Company: Integrated Engineering, PLLC By: HARSHA WIJESIRI  
 Date: 3/26/2014 Title: PRESIDENT



## GENERAL PROVISIONS

1. Each Respondent shall comply with all Federal, State & Local regulations concerning this type of service or good.  
  
The Respondent agrees to comply with all statutes, rules, and regulations governing safe and healthful working conditions, including the Occupational Health and Safety Act of 1970, 29 U.S.C. 650 *et. seq.*, as amended, and KRS Chapter 338. The Respondent also agrees to notify the LFUCG in writing immediately upon detection of any unsafe and/or unhealthful working conditions at the job site. The Respondent agrees to indemnify, defend and hold the LFUCG harmless from all penalties, fines or other expenses arising out of the alleged violation of said laws.
2. Failure to submit ALL forms and information required in this RFP may be grounds for disqualification.
3. Addenda: All addenda, if any, shall be considered in making the proposal, and such addenda shall be made a part of this RFP. Before submitting a proposal, it is incumbent upon each proposer to be informed as to whether any addenda have been issued, and the failure to cover in the bid any such addenda may result in disqualification of that proposal.
4. Proposal Reservations: LFUCG reserves the right to reject any or all proposals, to award in whole or part, and to waive minor immaterial defects in proposals. LFUCG may consider any alternative proposal that meets its basic needs.
5. Liability: LFUCG is not responsible for any cost incurred by a Respondent in the preparation of proposals.
6. Changes/Alterations: Respondent may change or withdraw a proposal at any time prior to the opening; however, no oral modifications will be allowed. Only letters, or other formal written requests for modifications or corrections of a previously submitted proposal which is addressed in the same manner as the proposal, and received by LFUCG prior to the scheduled closing time for receipt of proposals, will be accepted. The proposal, when opened, will then be corrected in accordance with such written request(s), provided that the written request is contained in a sealed envelope which is plainly marked "modifications of proposal".
7. Clarification of Submittal: LFUCG reserves the right to obtain clarification of any point in a bid or to obtain additional information from a Respondent.
8. Bribery Clause: By his/her signature on the bid, Respondent certifies that no employee of his/hers, any affiliate or Subcontractor, has bribed or attempted to bribe an officer or employee of the LFUCG.

9. Additional Information: While not necessary, the Respondent may include any product brochures, software documentation, sample reports, or other documentation that may assist LFUCG in better understanding and evaluating the Respondent's response. Additional documentation shall not serve as a substitute for other documentation which is required by this RFP to be submitted with the proposal,
10. Ambiguity, Conflict or other Errors in RFP: If a Respondent discovers any ambiguity, conflict, discrepancy, omission or other error in the RFP, it shall immediately notify LFUCG of such error in writing and request modification or clarification of the document if allowable by the LFUCG.
11. Agreement to Bid Terms: In submitting this proposal, the Respondent agrees that it has carefully examined the specifications and all provisions relating to the work to be done attached hereto and made part of this proposal. By acceptance of a Contract under this RFP, proposer states that it understands the meaning, intent and requirements of the RFP and agrees to the same. The successful Respondent shall warrant that it is familiar with and understands all provisions herein and shall warrant that it can comply with them. No additional compensation to Respondent shall be authorized for services or expenses reasonably covered under these provisions that the proposer omits from its Proposal.
12. Cancellation: If the services to be performed hereunder by the Respondent are not performed in an acceptable manner to the LFUCG, the LFUCG may cancel this contract for cause by providing written notice to the proposer, giving at least thirty (30) days notice of the proposed cancellation and the reasons for same. During that time period, the proposer may seek to bring the performance of services hereunder to a level that is acceptable to the LFUCG, and the LFUCG may rescind the cancellation if such action is in its best interest.

#### A. Termination for Cause

- (1) LFUCG may terminate a contract because of the contractor's failure to perform its contractual duties
- (2) If a contractor is determined to be in default, LFUCG shall notify the contractor of the determination in writing, and may include a specified date by which the contractor shall cure the identified deficiencies. LFUCG may proceed with termination if the contractor fails to cure the deficiencies within the specified time.
- (3) A default in performance by a contractor for which a contract may be terminated shall include, but shall not necessarily be limited to:
  - (a) Failure to perform the contract according to its terms,



- conditions and specifications;
- (b) Failure to make delivery within the time specified or according to a delivery schedule fixed by the contract;
  - (c) Late payment or nonpayment of bills for labor, materials, supplies, or equipment furnished in connection with a contract for construction services as evidenced by mechanics' liens filed pursuant to the provisions of KRS Chapter 376, or letters of indebtedness received from creditors by the purchasing agency;
  - (d) Failure to diligently advance the work under a contract for construction services;
  - (e) The filing of a bankruptcy petition by or against the contractor; or
  - (f) Actions that endanger the health, safety or welfare of the LFUCG or its citizens.

#### B. At Will Termination

Notwithstanding the above provisions, the LFUCG may terminate this contract at will in accordance with the law upon providing thirty (30) days written notice of that intent. Payment for services or goods received prior to termination shall be made by the LFUCG provided these goods or services were provided in a manner acceptable to the LFUCG. Payment for those goods and services shall not be unreasonably withheld.

- 13. **Assignment of Contract:** The contractor shall not assign or subcontract any portion of the Contract without the express written consent of LFUCG. Any purported assignment or subcontract in violation hereof shall be void. It is expressly acknowledged that LFUCG shall never be required or obligated to consent to any request for assignment or subcontract; and further that such refusal to consent can be for any or no reason, fully within the sole discretion of LFUCG.
- 14. **No Waiver:** No failure or delay by LFUCG in exercising any right, remedy, power or privilege hereunder, nor any single or partial exercise thereof, nor the exercise of any other right, remedy, power or privilege shall operate as a waiver hereof or thereof. No failure or delay by LFUCG in exercising any right, remedy, power or privilege under or in respect of this Contract shall affect the rights, remedies, powers or privileges of LFUCG hereunder or shall operate as a waiver thereof.
- 15. **Authority to do Business:** The Respondent must be a duly organized and authorized to do business under the laws of Kentucky. Respondent must be in good standing and have full legal capacity to provide the services specified under this Contract. The Respondent must have all necessary right and lawful authority to enter into this Contract for the full term hereof and that proper corporate or other action has been duly taken authorizing the Respondent to enter into this

Contract. The Respondent will provide LFUCG with a copy of a corporate resolution authorizing this action and a letter from an attorney confirming that the proposer is authorized to do business in the State of Kentucky if requested. All proposals must be signed by a duly authorized officer, agent or employee of the Respondent.

16. **Governing Law:** This Contract shall be governed by and construed in accordance with the laws of the Commonwealth of Kentucky. In the event of any proceedings regarding this Contract, the Parties agree that the venue shall be the Fayette County Circuit Court or the U.S. District Court for the Eastern District of Kentucky, Lexington Division. All parties expressly consent to personal jurisdiction and venue in such Court for the limited and sole purpose of proceedings relating to this Contract or any rights or obligations arising thereunder. Service of process may be accomplished by following the procedures prescribed by law.
17. **Ability to Meet Obligations:** Respondent affirmatively states that there are no actions, suits or proceedings of any kind pending against Respondent or, to the knowledge of the Respondent, threatened against the Respondent before or by any court, governmental body or agency or other tribunal or authority which would, if adversely determined, have a materially adverse effect on the authority or ability of Respondent to perform its obligations under this Contract, or which question the legality, validity or enforceability hereof or thereof.
18. Contractor understands and agrees that its employees, agents, or subcontractors are not employees of LFUCG for any purpose whatsoever. Contractor is an independent contractor at all times during the performance of the services specified.
19. If any term or provision of this Contract shall be found to be illegal or unenforceable, the remainder of the contract shall remain in full force and such term or provision shall be deemed stricken.

  
\_\_\_\_\_  
Signature

3/24/2014  
Date



**RISK MANAGEMENT PROVISIONS  
INSURANCE AND INDEMNIFICATION**

**RFP #13-2014 Request for Qualifications for Professional Engineering Services**

---

**A. 1.0 DEFINITIONS.**

The CONTRACTOR understands and agrees that the Risk Management Provisions of this Contract define the responsibilities of the CONTRACTOR to the OWNER.

As used in these Risk Management Provisions, the terms "CONTRACTOR" and "OWNER" shall be defined as follows:

- a. "CONTRACTOR" means the contractor and its employees, agents, servants, owners, principals, licensees, assigns and subcontractors of any tier.
- b. "OWNER" means the Lexington-Fayette Urban County Government and its elected and appointed officials, employees, agents, boards, consultants, assigns, volunteers and successors in interest.

**2.0. INDEMNIFICATION AND HOLD HARMLESS PROVISION**

CONTRACTOR shall defend, indemnify, and hold harmless OWNER from and against all liability, claims, losses, actions, costs, expenses, obligations, fines, and assessments of whatever kind, including defense costs and attorney's fees, that are in any way incidental to or connected with, or that arise or are alleged to have arisen, directly or indirectly, in whole or in part, from or by: (a) CONTRACTOR's negligent acts or intentional misconduct, or errors or omissions, in connection with the performance of this contract, (b) CONTRACTOR's performance or breach of the contract provided the claim or loss is attributable to death, illness, personal injury, or property loss or damage or loss of use, and not caused by a negligent act or omission, or the willful misconduct of the OWNER, or (c) the condition of any premises, equipment or other property being used or operated by the CONTRACTOR in connection with the performance of this contract. In the event OWNER is alleged to be liable based upon the actions or inactions of CONTRACTOR, CONTRACTOR shall defend such allegations and shall bear all costs, fees and expenses of such defense, including but not limited to, all attorneys' fees and expenses, court costs, and expert witness fees and expenses, using attorneys approved in writing by OWNER, which approval shall not be unreasonably withheld. This Indemnification and Hold Harmless Provision shall in no way be limited by any financial responsibility or insurance requirements, and shall survive the termination of this contract.

**3.0 FINANCIAL RESPONSIBILITY**

The CONTRACTOR understands and agrees that it shall, prior to final acceptance of its bid and the commencement of any work, demonstrate the ability to assure compliance with the Indemnity Agreement and other provisions of this Contract.

#### 4.0 INSURANCE REQUIREMENTS

BIDDERS' ATTENTION IS DIRECTED TO THE INSURANCE REQUIREMENTS BELOW, AS BIDDERS MUST CONFER WITH THEIR RESPECTIVE INSURANCE AGENTS, BROKERS, OR CARRIERS TO DETERMINE IN ADVANCE OF BID SUBMISSION THE AVAILABILITY OF THE INSURANCE COVERAGES AND ENDORSEMENTS REQUIRED HEREIN. IF AN APPARENT LOW BIDDER FAILS TO COMPLY STRICTLY WITH THE INSURANCE REQUIREMENTS BELOW, THAT BIDDER MAY BE DISQUALIFIED FROM AWARD OF THE CONTRACT.

##### 4.1 Required Insurance Coverage

CONTRACTOR shall procure and maintain for the duration of this contract the following or equivalent insurance policies at no less than the limits shown below and cause its subcontractors to maintain similar insurance with limits acceptable to OWNER in order to protect OWNER against claims for injuries to persons or damages to property which may arise from or in connection with the performance of the work hereunder by CONTRACTOR. The cost of such insurance shall be included in any bid:

<u>Coverage</u>	<u>Limits</u>
General Liability (Insurance Services Office Form CG 00 01)	\$1 million per occurrence, \$2 million aggregate or \$2 million combined single limit
Commercial Automobile Liability (Insurance Services Office Form CA 0001)	combined single, \$1 million per occurrence
Professional Liability	\$1 million per occurrence, \$2 million aggregate
Worker's Compensation	Statutory
Employer's Liability	\$500,000.00

The policies above shall contain the following conditions:

- a. OWNER shall be named as an additional insured in the General Liability Policy and Commercial Automobile Liability Policy.
- b. The General Liability Policy shall be primary to any insurance or self-insurance retained by OWNER.
- c. The General Liability Policy shall include a Products and Completed Operations endorsement or Premises and Operations Liability endorsement unless it is deemed not to apply by OWNER.
- d. The General Liability Policy shall have a Professional Liability endorsement (including Errors and Omissions) for any services performed pursuant to the contract, and/or a separate Professional Liability Policy shall be obtained unless it is deemed not to apply by OWNER.



- e. OWNER shall be provided at least 30 days advance written notice via certified mail, return receipt requested, in the event any of the required policies are canceled or non-renewed.
- f. The Professional Liability policy shall be maintained for a minimum of three years beyond the completion date of the project, to the extent commercially available. If not commercially available, CONTRACTOR shall notify OWNER and obtain similar insurance that is commercially available and acceptable to OWNER.
- g. The General Liability Policy shall include a Pollution Liability endorsement unless it is deemed not to apply by OWNER.
- h. The General Liability Policy shall include an Environmental Casualty endorsement unless it is deemed not to apply by OWNER.
- i. Said coverage shall be written by insurers acceptable to OWNER and shall be in a form acceptable to OWNER. Insurance placed with insurers with a rating classification of no less than Excellent (A or A-) and a financial size category of no less than VIII, as defined by the most current Best's Key Rating Guide shall be deemed automatically acceptable.

4.2. Additional insurance coverage and amounts required, if any, are stated below:

NONE

4.3. Renewals

After insurance has been approved by OWNER, evidence of renewal of an expiring policy must be submitted to OWNER, and may be submitted on a manually signed renewal endorsement form. If the policy or carrier has changed, however, new evidence of coverage must be submitted in accordance with these Insurance Requirements.

4.4. Deductibles and Self-Insured Programs

**IF CONTRACTOR INTENDS TO SUBMIT SELF-INSURANCE PLAN FOR BID, THIS MUST BE FORWARDED TO LEXINGTON-FAYETTE URBAN COUNTY GOVERNMENT, DIVISION OF RISK MANAGEMENT, 200 EAST MAIN STREET, LEXINGTON, KENTUCKY 40507 NO LATER THAN A MINIMUM OF FIVE (5) WORKING DAYS PRIOR TO BID OPENING DATE.** Self-insurance programs, deductibles, and self-insured retentions in insurance policies are subject to separate approval by Lexington-Fayette Urban County Government's Division of Risk Management, upon review of evidence of CONTRACTOR'S financial capacity to respond to claims. Any such programs or retentions must provide OWNER with at least the same protection from liability and defense of suits as would be afforded by first-dollar insurance coverage. If CONTRACTOR satisfies any portion of the insurance requirements through deductibles, self-insurance programs, or self-insured retentions, CONTRACTOR agrees to provide Lexington-Fayette Urban County Government, Division of Risk Management, the following data prior to the final acceptance of bid and the commencement of any work:

- a. CONTRACTOR'S latest audited financial statement, including auditor's notes.
- b. Any records of any self-insured trust fund plan or policy and related accounting statements.
- c. Actuarial funding reports or retained losses.
- d. CONTRACTOR'S Risk Management Manual or a description of CONTRACTOR'S self-insurance and risk management program.
- e. A claim loss run summary for the previous five (5) years.
- f. Self-Insured Associations will be considered.

#### 4.5. Verification of Coverage

Prior to award of bid, CONTRACTOR agrees to furnish OWNER with all applicable Certificates of Insurance signed by a person authorized by the insurer to bind coverage on its behalf. If requested, CONTRACTOR shall provide OWNER copies of all insurance policies, including all endorsements.

#### 4.6. Right to Review, Audit and Inspect

CONTRACTOR understands and agrees that OWNER may review, audit and inspect any and all of CONTRACTOR'S records and operations to insure compliance with these Insurance Requirements.

### 5.0 SAFETY AND LOSS CONTROL

- 5.1. CONTRACTOR agrees to adhere to and comply with William-Steiger Act, enacted December 1970, and all other federal, state and local safety and environmental laws, regulations and ordinances. The CONTRACTOR shall provide all safeguards, safety devices and protective equipment, and take any other action necessary to protect the life, health and safety and property of all persons on the job site, the public and the owner.
- 5.2. The current Kentucky Occupational Safety and Health Standards of the Construction Industry 29 CFR Part 1926 adopted by 803 KAR 2:030 and the Kentucky Occupational Safety and Health Standard for General Industry 29 CFR Part 1910 as adopted by KAR 2:010, and as promulgated by the Kentucky Occupational Safety and Health Standards Board and as amended or modified, are hereby incorporated into and made an integral part of the Contract with full compliance the responsibility solely of the CONTRACTOR.
- 5.3. The CONTRACTOR understands and agrees that the OWNER shall be permitted, but not obligated, to inspect the work place, operations, machinery and equipment involved in this Contract and review and audit any and all CONTRACTOR'S records



and documents as deemed necessary by the OWNER to assure compliance with any and all of the provisions of this Contract and maximize the protection of the OWNER. Safety on the job, however, remains solely the responsibility of the CONTRACTOR.

**6.0 DEFINITION OF DEFAULT**

CONTRACTOR understands and agrees that the failure to comply with any of these insurance, safety, or loss control provisions shall constitute default under this Contract. CONTRACTOR also agrees that OWNER may elect at its option any single remedy or penalty or any combination of remedies and penalties, as available, including but not limited to purchasing insurance and charging CONTRACTOR for any such insurance premiums purchased, or suspending or terminating this Contract.

00302720

# EQUAL EMPLOYMENT OPPORTUNITY AND AFFIRMATIVE ACTION PROGRAM

*Integrated Engineering, PLLC*

---

COMPANY

*166 Prosperous Place, Suite 220*

---

STREET

*Lexington*

---

CITY

*KY*

STATE

*40509*

---

ZIP

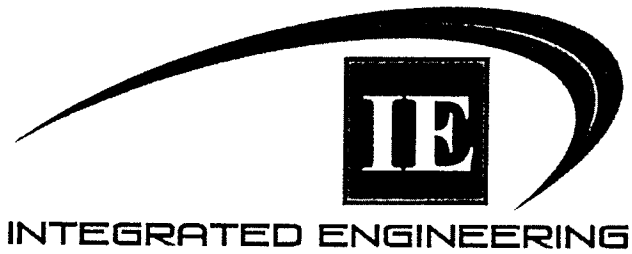
Contact Person: Harsha Wijesiri

Phone: (859) 368 0145

Fax: (859) 904-1538

E-Mail Address: [harsha@int-engineering.com](mailto:harsha@int-engineering.com)





**TABLE OF CONTENTS**

- I     Equal Employment Opportunity**
- II    Responsibilities of EEO Coordinator**
- III   Dissemination of AA Policy and Plan**
- VI    Recruitment of Employees**

# I Equal Employment Opportunity

## The Law

- Title VII of the Civil Rights Act of 1964 (amended 1972) states that it is unlawful for an employer to discriminate in employment because of race, color, religion, sex, age (40-70 years) or national origin.
- Executive Order No. 11246 on Nondiscrimination under Federal contract prohibits employment discrimination by contractor and sub-contractor doing business with the Federal Government or recipients of Federal funds. This order was later amended by Executive Order No. 11375 to prohibit discrimination on the basis of sex.
- Section 503 of the Rehabilitation Act of 1973 states:

*The Contractor will not discriminate against any employee or applicant for employment because of physical or mental handicap.*

- Section 2012 of the Vietnam Era Veterans Readjustment Act of 1973 requires Affirmative Action on behalf of disabled veterans and veterans of the Vietnam Era by contractors having Federal contracts.
- Section 206(A) of Executive Order 12086, Consolidation of Contract Compliance Functions for Equal Employment Opportunity, states:

*The Secretary of Labor may investigate the employment practices of any Government contractor or sub-contractor to determine whether or not the contractual provisions specified in Section 202 of this order have been violated.*

\*\*\*\*\*

The Lexington-Fayette Urban County Government practices Equal Opportunity in recruiting, hiring and promoting. It is the Government's intent to affirmatively provide employment opportunities for those individuals who have previously not been allowed to enter into the mainstream of society. Because of its importance to the local Government, this policy carries the full endorsement of the Mayor, Commissioners, Directors and all supervisory personnel. In following this commitment to Equal Employment Opportunity and because the Government is the benefactor of the Federal funds, it is both against the Urban County Government policy and illegal for the Government to let contracts to companies which knowingly or unknowingly practice discrimination in their employment practices. Violation of the above mentioned ordinances may cause a contract to be canceled and the contractors may be declared ineligible for future consideration.

Please sign this statement in the appropriate space acknowledging that you have read and understand the provisions contained herein. Return this document as part of your application packet.

## Bidders

*I/We agree to comply with the Civil Rights Laws listed above that govern employment rights of minorities, women, Vietnam veterans, handicapped and aged persons.*

  
\_\_\_\_\_  
Signature

Integrated Engineering, PLLC  
\_\_\_\_\_  
Name of Business



## **II Assignment of Responsibilities for the Equal Employment Opportunity/Affirmative Action Program**

The EEO Coordinator for the Company is *Harsha Wijesiri*

The duties of the EEO Coordinator are to

- A. Develop and update written affirmative action plans consistent with the Company's policy.
- B. Implement affirmative action program including internal and external dissemination of the Company's policy and program.
- C. Coordinate recruitment and employment of women and minorities.
- D. Serve as a liaison between the Company, its Contractors.
- E. Serve as a liaison between protected class groups and the Company.
- F. Conduct and/or coordinate EEO training and orientation of Company supervisors, managers and subcontractors to inform them of their responsibilities pursuant to the affirmative action plan.
- G. Ensure that managers and supervisors understand it is their responsibility to take action to prevent the harassment of protected class employees and applicants for employment.
- H. Ensure all minorities and women are provided equal opportunity as it relates to company-sponsored training programs, recreation/social activities, benefit plans, pay and other working conditions without regard to race, sex, color, etc.
- I. Review the qualifications of all employees to ensure that minorities and women are given full opportunity for transfers and promotions.
- J. Identify any problem areas and recommend solutions.
- K. Keep management informed of the latest developments in the area of EEO.
- L. Receive, investigate and attempt to resolve all EEO complaints.
- M. Coordinate the implementation of necessary remedial actions to meet compliance requirements and goals.
- N. Hold regular discussions with project managers, supervisors and employees to ensure the Company's equal employment opportunity policies are being followed.
- O. Monitor subcontractors and work sites to ensure compliance in such areas as:

1. Proper employment of women and minority employees.
2. Proper display of EEO posters.
3. Working conditions exist free of harassment and intimidation due to race, sex, national origin, etc.

### **III Dissemination of Affirmative Action Policy and Plan**

#### **Internal Dissemination**

1. The policy statement will be permanently and conspicuously displayed in areas such as employee bulletin boards, lunch areas, and construction sites. The Company as an equal employment opportunity employer will also print the policy statement in the company newsletter and other publications.
2. All employees and contractors will be furnished a copy of the policy statement and be notified of location and availability of the affirmative action plan. This policy will be made available to all employees including part-time, temporary and seasonal employees.
3. The EEO/AA policies of the Company will be included in the organization's policy manual.
4. The Company will review the organization's EEO/AA policies with all employees and management at least once a year.
5. The Company will also conduct orientation and training sessions to thoroughly inform staff and management of the company's EEO/AA commitment.
6. Develop internal communication of obligations to engage in affirmative action efforts to employ women and minorities, in such a manner as to foster understanding, acceptance, and support among executive, management, supervisor, and all other employees, and to encourage such persons to take the necessary action to aid Company in meeting this obligation.

#### **B External Dissemination**

1. The Company will include nondiscrimination clauses in all union agreements, and review all contractual provisions to ensure that they are nondiscriminatory. The Company will meet with union officials to inform them of the EEO/AA policies and request their cooperation.
2. The Company will notify all recruitment sources, including the protected class media, of the EEO/AA policy and encourage them to



refer women and minority individuals to assist them in achieving the affirmative action objectives.

3. The Company will include the statement "Equal Opportunity Employer/Contractor" or "Affirmative Action Employer/Contractor" in all advertisements recruiting employees and contractors.
4. The Company will notify all subcontractors, vendors, and suppliers verbally and in writing of its EEO/AA policy requiring supportive action on their part.

## **VI Recruitment of Employees**

- A. When the Company adds employees it will use media that targets women and minorities to advertise the openings. Sufficient time will be allowed after the publication of the advertisement to generate sufficient numbers of protected class applicants.
- B. All solicitations or advertisements for employees placed by or in behalf of the Company or its subcontractors will state that all qualified applicants will receive consideration for employment, regardless of their race, religion, color, sex, national origin, sexual orientation, age, handicap, familial status, or marital status. Copies of advertisements for employees must be kept on file for review by enforcement agencies.
- C. The Company will not indicate in help-wanted advertisements a preference, limitation, specification or discrimination based on sex, unless sex is a bona fide occupational qualification for a particular job involved. The placement of an advertisement in columns classified by publishers on the basis of sex, such as columns headed, "Male" or "Female" will be considered as an expression of a preference, limitation, specification or discrimination based on sex.
- D. Acting recruiting programs, where applicable, will be carried out at secondary schools, community colleges, and colleges with predominantly minority and female enrollments. Recruiting efforts at all schools will incorporate efforts to reach minorities and females.
- E. The Company and its subcontractors will make job opportunity information equally available to potential applicants from both protected and non-protected class groups, unless there is a bona fide occupational requirement for a particular job.
- F. The Company will actively encourage present minority and females to recruit other minorities and females, and where reasonable, provide after school, summer and vacation employment to minorities and females, both onsite and in other areas of their workforce.
- G. Recruitment brochures pictorially presenting work situations will include minorities and females of the Company's workforce.
- H. Special efforts will be made to include minorities and females on personnel relations staff.



**INTEGRATED ENGINEERING**

---

Corporate Office  
166 Prosperous Place; Suite 220  
Lexington, KY 40509  
859-368-0145  
[www.int-engineering.com](http://www.int-engineering.com)  
*Certified DBE*



# CERTIFICATE OF LIABILITY INSURANCE

INTEG-4

OP ID: HM

DATE (MM/DD/YYYY)

06/06/2014

THIS CERTIFICATE IS ISSUED AS A MATTER OF INFORMATION ONLY AND CONFERS NO RIGHTS UPON THE CERTIFICATE HOLDER. THIS CERTIFICATE DOES NOT AFFIRMATIVELY OR NEGATIVELY AMEND, EXTEND OR ALTER THE COVERAGE AFFORDED BY THE POLICIES BELOW. THIS CERTIFICATE OF INSURANCE DOES NOT CONSTITUTE A CONTRACT BETWEEN THE ISSUING INSURER(S), AUTHORIZED REPRESENTATIVE OR PRODUCER, AND THE CERTIFICATE HOLDER.

**IMPORTANT:** If the certificate holder is an ADDITIONAL INSURED, the policy(ies) must be endorsed. If SUBROGATION IS WAIVED, subject to the terms and conditions of the policy, certain policies may require an endorsement. A statement on this certificate does not confer rights to the certificate holder in lieu of such endorsement(s).

<b>PRODUCER</b> Lexington Insurance Agency Inc P.O. Box 320 Lexington, KY 40588-0320 Kevin O. Stinnett	<b>CONTACT NAME:</b> Harlena McFarland <b>PHONE (A/C, No., Ext.):</b> 859-253-6570 <b>FAX (A/C, No.):</b> 859-253-6577 <b>E-MAIL ADDRESS:</b> harlena@lexingtoninsuranceagency.com
	<b>INSURER(S) AFFORDING COVERAGE</b> <b>INSURER A :</b> Ohio Casualty <b>INSURER B :</b> Travelers <b>INSURER C :</b> Kentucky Retail Federation SIF <b>INSURER D :</b> <b>INSURER E :</b> <b>INSURER F :</b>
<b>INSURED</b> Integrated Engineering PLLC 166 Prosperous Pl Ste 220 Lexington, KY 40509	

**COVERAGES**                      **CERTIFICATE NUMBER:**                      **REVISION NUMBER:**

THIS IS TO CERTIFY THAT THE POLICIES OF INSURANCE LISTED BELOW HAVE BEEN ISSUED TO THE INSURED NAMED ABOVE FOR THE POLICY PERIOD INDICATED. NOTWITHSTANDING ANY REQUIREMENT, TERM OR CONDITION OF ANY CONTRACT OR OTHER DOCUMENT WITH RESPECT TO WHICH THIS CERTIFICATE MAY BE ISSUED OR MAY PERTAIN, THE INSURANCE AFFORDED BY THE POLICIES DESCRIBED HEREIN IS SUBJECT TO ALL THE TERMS, EXCLUSIONS AND CONDITIONS OF SUCH POLICIES. LIMITS SHOWN MAY HAVE BEEN REDUCED BY PAID CLAIMS.

INSR LTR	TYPE OF INSURANCE	ADDL SUBR INSR	WYVD	POLICY NUMBER	POLICY EFF (MM/DD/YYYY)	POLICY EXP (MM/DD/YYYY)	LIMITS
A	<b>GENERAL LIABILITY</b> <input checked="" type="checkbox"/> COMMERCIAL GENERAL LIABILITY <input type="checkbox"/> CLAIMS-MADE <input checked="" type="checkbox"/> OCCUR  GEN'L AGGREGATE LIMIT APPLIES PER <input type="checkbox"/> POLICY <input type="checkbox"/> PRO-JECT <input type="checkbox"/> LOC			BKS55249294	09/10/2013	09/10/2014	EACH OCCURRENCE \$ 1,000,000
							DAMAGE TO RENTED PREMISES (Ea occurrence) \$ 1,000,000
							MED EXP (Any one person) \$ 15,000
							PERSONAL & ADV INJURY \$ 1,000,000
							GENERAL AGGREGATE \$ 2,000,000
							PRODUCTS - COMP/OP AGG \$ 2,000,000
							\$
A	<b>AUTOMOBILE LIABILITY</b> <input type="checkbox"/> ANY AUTO <input type="checkbox"/> ALL OWNED AUTOS <input checked="" type="checkbox"/> HIRED AUTOS <input checked="" type="checkbox"/> SCHEDULED AUTOS <input checked="" type="checkbox"/> NON-OWNED AUTOS			55249294	09/10/2013	09/10/2014	COMBINED SINGLE LIMIT (Ea accident) \$ 1,000,000
							BODILY INJURY (Per person) \$
							BODILY INJURY (Per accident) \$
							PROPERTY DAMAGE (PER ACCIDENT) \$
							\$
A	<input checked="" type="checkbox"/> UMBRELLA LIAB <input checked="" type="checkbox"/> OCCUR <input type="checkbox"/> EXCESS LIAB <input type="checkbox"/> CLAIMS-MADE <input type="checkbox"/> DED <input checked="" type="checkbox"/> RETENTION \$ 10,000			55249294	09/10/2013	09/10/2014	EACH OCCURRENCE \$ 10,000,000
							AGGREGATE \$ 10,000,000
							\$
C	<b>WORKERS COMPENSATION AND EMPLOYERS' LIABILITY</b> ANY PROPRIETOR/PARTNER/EXECUTIVE OFFICER/MEMBER EXCLUDED? (Mandatory in NH) If yes, describe under DESCRIPTION OF OPERATIONS below Y/N <input type="checkbox"/> N/A			2406715	09/10/2013	09/10/2014	<input checked="" type="checkbox"/> WC STATUTORY LIMITS <input type="checkbox"/> OTHER
							E.L. EACH ACCIDENT \$ 1,000,000
							E.L. DISEASE - EA EMPLOYEE \$ 1,000,000
							E.L. DISEASE - POLICY LIMIT \$ 1,000,000
B	<b>PROFESSIONAL INCL. POLLUTION</b>			105837397	09/20/2013	09/20/2014	EA. CLAIM 1,000,000
							ALL CLAIM 2,000,000

DESCRIPTION OF OPERATIONS / LOCATIONS / VEHICLES (Attach ACORD 101, Additional Remarks Schedule, if more space is required)

Engineering Services

**CERTIFICATE HOLDER****CANCELLATION**

LFUGC12

LFUGC  
 Division of Engineering  
 101 East Vine Street  
 Lexington, KY 40507

SHOULD ANY OF THE ABOVE DESCRIBED POLICIES BE CANCELLED BEFORE THE EXPIRATION DATE THEREOF, NOTICE WILL BE DELIVERED IN ACCORDANCE WITH THE POLICY PROVISIONS.

AUTHORIZED REPRESENTATIVE

Larry Reesman

© 1988-2010 ACORD CORPORATION. All rights reserved.



**EXHIBIT** ~~B~~ C

**FURTHER DESCRIPTION OF BASIC  
ENGINEERING SERVICES AND  
RELATED MATTERS**

**LFUCG PROJECT ASSIGNMENT NO. \_\_\_\_\_  
UNDER LFUCG AGREEMENT WITH \_\_\_\_\_ FOR**

---

**CONSULTANT**

**OWNER**

<b>Name</b>		Lexington Fayette Urban County Government
<b>Street Address</b>		200 East Main Street
<b>City, State, Zip</b>		Lexington, KY 40507
<b>Contact Person</b>		Brad Frazier
<b>Telephone</b>		859-258-3410
<b>Fax</b>		859-258-3458
<b>E-Mail</b>		bfrazier@lexingtonky.gov

**Project Assignment Date:** \_\_\_\_\_

**Task Name:** \_\_\_\_\_

**Task ID:** \_\_\_\_\_

**SCOPE OF WORK/DELIVERABLES**

**SCHEDULE OF WORK**

**FEE**

**ACCEPTED BY:**

**AUTHORIZED BY:**

\_\_\_\_\_  
Consultant's Authorized Signature

\_\_\_\_\_  
Owner's Authorized Signature

\_\_\_\_\_  
Date Signed

\_\_\_\_\_  
Date Signed

*Two originals of this work order shall be executed by the Owner and returned to \_\_\_\_\_. A fully executed copy will be returned to the Owner.*