

APPROXIMATE LOCATION OF HELIX
RECEPTACLES TO BE RELOCATED
COORDINATE WITH HELIX REPRESENTATIVES
FOR THEIR RELOCATION AND BEC WORK IN
THIS AREA

CONCRETE PRECASTRAN
PATH JOINT PATTERN
SEE DETAIL 3/832

TRENCH DRAIN, SEE
DRAINAGE PLANS

PROPOSED CURB LINE
CURB-CUT AND STORMWATER
DETAIL 3/846
CONCRETE MULTI-USE AND
BIKE CYCLE PATH JOINT
PATTERN, SEE DETAIL 3/832

EXISTING BRIDGE PIER
LANTERN
RAIN
CATCHEN

W. VINE ST.

PLANT BED

PLANT BED

PLANT BED

PLANT BED

PLANT BED

PLANT BED

PLANT BED

PLANT BED

PLANT BED

PLANT BED

PLANT BED

PLANT BED

PLANT BED

PLANT BED

PLANT BED

PLANT BED

PLANT BED

PLANT BED

PLANT BED

PLANT BED

PLANT BED

PLANT BED

PLANT BED

PLANT BED

PLANT BED

PLANT BED

PLANT BED

PLANT BED

PLANT BED

PLANT BED

PLANT BED

PLANT BED

PLANT BED

PLANT BED

PLANT BED

PLANT BED

PLANT BED

PLANT BED

PLANT BED

PLANT BED

PLANT BED

PLANT BED

PLANT BED

PLANT BED

PLANT BED

PLANT BED

PLANT BED

PLANT BED

PLANT BED

PLANT BED

PLANT BED

PLANT BED

PLANT BED

PLANT BED

PLANT BED

PLANT BED

PLANT BED

PLANT BED

PLANT BED

PLANT BED

PLANT BED

PLANT BED

PLANT BED

PLANT BED

PLANT BED

PLANT BED

PLANT BED

PLANT BED

PLANT BED

PLANT BED

PLANT BED

PLANT BED

PLANT BED

PLANT BED

PLANT BED

PLANT BED

PLANT BED

PLANT BED

PLANT BED

PLANT BED

PLANT BED

PLANT BED

PLANT BED

PLANT BED

PLANT BED

PLANT BED

PLANT BED

PLANT BED

PLANT BED

PLANT BED

PLANT BED

PLANT BED

PLANT BED

PLANT BED

PLANT BED

PLANT BED

PLANT BED

PLANT BED

PLANT BED

PLANT BED

PLANT BED

PLANT BED

PLANT BED

PLANT BED

PLANT BED

PLANT BED

PLANT BED

PLANT BED

PLANT BED

PLANT BED

PLANT BED

PLANT BED

PLANT BED

PLANT BED

PLANT BED

PLANT BED

PLANT BED

PLANT BED

PLANT BED

PLANT BED

PLANT BED

PLANT BED

PLANT BED

PLANT BED

PLANT BED

PLANT BED

PLANT BED

PLANT BED

PLANT BED

PLANT BED

PLANT BED

PLANT BED

PLANT BED

PLANT BED

PLANT BED

PLANT BED

PLANT BED

PLANT BED

PLANT BED

PLANT BED

PLANT BED

PLANT BED

PLANT BED

PLANT BED

PLANT BED

PLANT BED

PLANT BED

PLANT BED

PLANT BED

PLANT BED

PLANT BED

PLANT BED

PLANT BED

PLANT BED

PLANT BED

PLANT BED

PLANT BED

PLANT BED

PLANT BED

PLANT BED

PLANT BED

PLANT BED

PLANT BED

PLANT BED

PLANT BED

PLANT BED

PLANT BED

PLANT BED

PLANT BED

PLANT BED

PLANT BED

PLANT BED

PLANT BED

PLANT BED

PLANT BED

PLANT BED

PLANT BED

PLANT BED

PLANT BED

PLANT BED

PLANT BED

PLANT BED

PLANT BED

PLANT BED

PLANT BED

PLANT BED

PLANT BED

PLANT BED

PLANT BED

PLANT BED

PLANT BED

PLANT BED

PLANT BED

PLANT BED

PLANT BED

PLANT BED

PLANT BED

PLANT BED

PLANT BED

PLANT BED

PLANT BED

PLANT BED

PLANT BED

PLANT BED

PLANT BED

PLANT BED

PLANT BED

PLANT BED

PLANT BED

PLANT BED

PLANT BED

PLANT BED

PLANT BED

PLANT BED

PLANT BED

PLANT BED

PLANT BED

PLANT BED

PLANT BED

PLANT BED

PLANT BED

PLANT BED

PLANT BED

PLANT BED

PLANT BED

PLANT BED

PLANT BED

PLANT BED

PLANT BED

PLANT BED

PLANT BED

PLANT BED

PLANT BED

PLANT BED

PLANT BED

PLANT BED

PLANT BED

PLANT BED

PLANT BED

PLANT BED

PLANT BED

PLANT BED

PLANT BED

PLANT BED

PLANT BED

PLANT BED

PLANT BED

PLANT BED

PLANT BED

PLANT BED

PLANT BED

PLANT BED

PLANT BED

PLANT BED

PLANT BED

PLANT BED

PLANT BED

PLANT BED

PLANT BED

PLANT BED

PLANT BED

PLANT BED

PLANT BED

PLANT BED

PLANT BED

PLANT BED

PLANT BED

PLANT BED

PLANT BED

PLANT BED

PLANT BED

PLANT BED

PLANT BED

PLANT BED

PLANT BED

PLANT BED

PLANT BED

PLANT BED

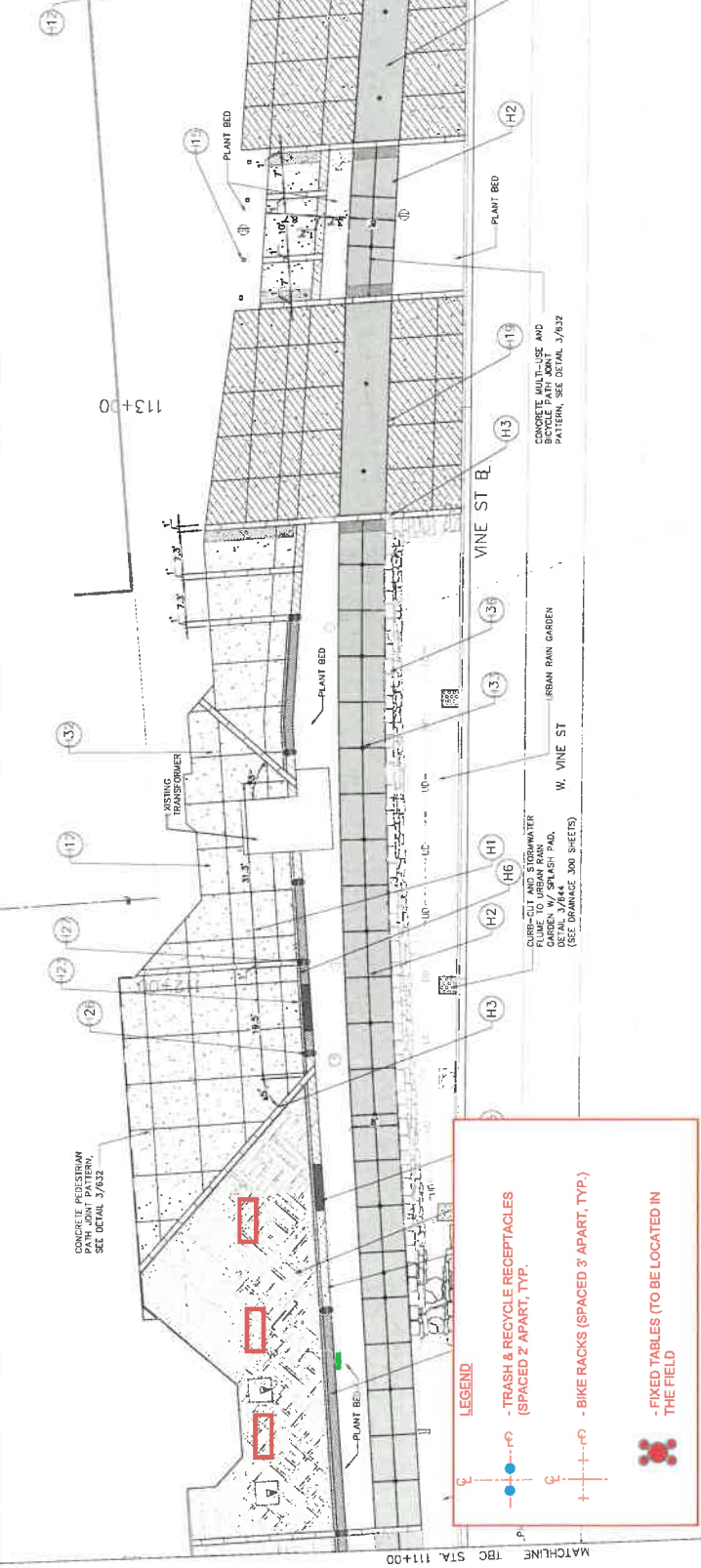
PLANT BED

PLANT BED

PLANT BED

PLANT BED

PLANT BED



LEGEND

- TRASH & RECYCLE RECEPTACLES (SPACED 2' APART, TYP.)
- BIKE RACKS (SPACED 3' APART, TYP.)
- FIXED TABLES (TO BE LOCATED IN THE FIELD)

GENERAL NOTES

- ALL DIMENSIONS SHOWN ARE TO BACK OF INDICATED FINISH FACE. PROPERTY LINE OR AS SHOWN.
- SEE ELECTRICAL SHEETS BY OTHERS FOR COORDINATION AND INSTALLATION OF LIGHTING. SEE DETAIL 3/632 FOR ALL NECESSARY JUNCTION BOXES (J) AND ALL NECESSARY CONDUIT ASSOCIATED WITH PEDESTRIAN LIGHTING.

LEGEND

H1	CONCRETE PEDESTRIAN PATH/WALK-USE PATH (SEE DETAIL 1, SHEET 630)	H12	NOT USED	H23	CRUSHED STONE EDGING W/ FINISH (SEE DETAIL 4, SHEET 631)
H2	CONCRETE BIKE PATH (SEE DETAIL 3, SHEET 630)	H13	SPLASH PAD (SEE DETAIL 3, SHEET 633)	H24	PRECAST BRUSH ON WINE (SEE DETAIL 3, SHEET 633)
H3	TOWN BRANCH PAVEMENT BANDING (SEE DETAIL 3, SHEET 630)	H14	NOT SHOWN	H25	PRECAST WALL END PIECE-A (SEE DETAIL 3, SHEET 634)
H4	SHEET FOR JOINTING CONCRETE (SEE DETAIL 1, SHEET 632)	H15	TOPICAL WALL WITH CAP (SEE DETAIL 1, SHEET 634)	H26	PRECAST WALL END PIECE-B (SEE DETAIL 4, SHEET 634)
H5	PRECAST BRUSH AND FOOTER (SEE DETAIL 4, SHEET 635)	H16	PERMEABLE SIGNATURE PAVING (SEE DETAIL 2, SHEET 635)	H27	CRUSHED STONE EDGING W/ FINISH (SEE DETAIL 4, SHEET 631)
H6	VEHICULAR WALL (SEE DETAIL 1, SHEET 633)	H17	PROPOSED JOINTY POLES (SEE DETAILS 2 & 4, SHEET 630)	H28	CRUSHED STONE EDGING W/ FINISH (SEE DETAIL 4, SHEET 631)
H7	VEHICULAR WALL (SEE DETAIL 1, SHEET 633)	H18	VEHICULAR RATED BASE (SEE DETAILS 2 & 4, SHEET 630)	H29	CRUSHED STONE EDGING W/ FINISH (SEE DETAIL 4, SHEET 631)
H8	CONCRETE WALL WITH CAP (SEE DETAIL 1, SHEET 634)	H19	VEHICULAR RATED BASE (SEE DETAILS 2 & 4, SHEET 630)	H30	CRUSHED STONE EDGING W/ FINISH (SEE DETAIL 4, SHEET 631)
H9	CONCRETE WALL WITH CAP (SEE DETAIL 1, SHEET 634)	H20	VEHICULAR RATED BASE (SEE DETAILS 2 & 4, SHEET 630)	H31	CRUSHED STONE EDGING W/ FINISH (SEE DETAIL 4, SHEET 631)
H10	CONCRETE WALL WITH CAP (SEE DETAIL 1, SHEET 634)	H21	VEHICULAR RATED BASE (SEE DETAILS 2 & 4, SHEET 630)	H32	CRUSHED STONE EDGING W/ FINISH (SEE DETAIL 4, SHEET 631)
H11	CONCRETE WALL WITH CAP (SEE DETAIL 1, SHEET 634)	H22	VEHICULAR RATED BASE (SEE DETAILS 2 & 4, SHEET 630)	H33	CRUSHED STONE EDGING W/ FINISH (SEE DETAIL 4, SHEET 631)

GENERAL NOTES

- ALL DIMENSIONS SHOWN ARE TO BACK OF INDICATED FINISH FACE. PROPERTY LINE OR AS SHOWN.
- SEE ELECTRICAL SHEETS BY OTHERS FOR COORDINATION AND INSTALLATION OF LIGHTING. SEE DETAIL 3/632 FOR ALL NECESSARY JUNCTION BOXES (J) AND ALL NECESSARY CONDUIT ASSOCIATED WITH PEDESTRIAN LIGHTING.

GENERAL NOTES

- ALL DIMENSIONS SHOWN ARE TO BACK OF INDICATED FINISH FACE. PROPERTY LINE OR AS SHOWN.
- SEE ELECTRICAL SHEETS BY OTHERS FOR COORDINATION AND INSTALLATION OF LIGHTING. SEE DETAIL 3/632 FOR ALL NECESSARY JUNCTION BOXES (J) AND ALL NECESSARY CONDUIT ASSOCIATED WITH PEDESTRIAN LIGHTING.

GENERAL NOTES

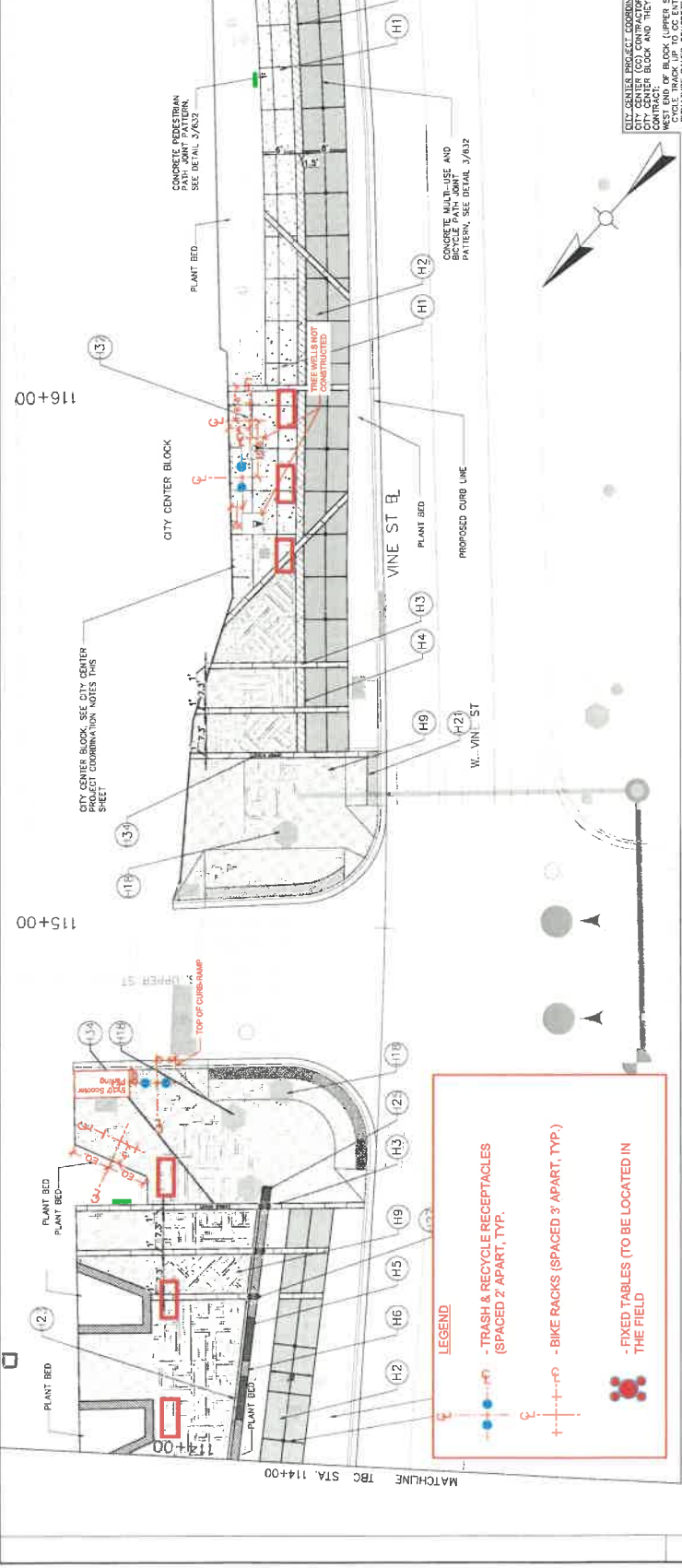
- ALL DIMENSIONS SHOWN ARE TO BACK OF INDICATED FINISH FACE. PROPERTY LINE OR AS SHOWN.
- SEE ELECTRICAL SHEETS BY OTHERS FOR COORDINATION AND INSTALLATION OF LIGHTING. SEE DETAIL 3/632 FOR ALL NECESSARY JUNCTION BOXES (J) AND ALL NECESSARY CONDUIT ASSOCIATED WITH PEDESTRIAN LIGHTING.



Gresham Smith
LEXINGTON

HARDSCAPE PLAN
TOWN BRANCH COMMONS
STA. 111+00 TO STA. 114+00

element design
www.elementdesign.com



GENERAL NOTES

- ALL DIMENSIONS SHOWN ARE TO BACK OF CURB UNLESS OTHERWISE INDICATED.
- SEE ELECTRICAL SHEETS BY OTHERS FOR COORDINATION AND INSTALLATION OF ALL ELECTRICAL EQUIPMENT, JUNCTION BOXES (JB), AND ALL NECESSARY CONDUIT ASSOCIATED WITH PEDESTRIAN CONDUIT.

CITY CENTER BLOCK UPPER STREET TO STA. 117+00

- LT. EAST WINE ST. STA. 115+32 TO 117+00 CONST. 157
- LF. EAST WINE ST. STA. 115+32 TO 117+00 143 5" CYCLE TRACK (BT OTHERS AND K.I.C.)
- LT. EAST WINE ST. STA. 115+49 TO 117+00 CONST. 113
- LF. EAST WINE ST. STA. 115+49 TO 117+00 CONST. 113
- LT. EAST WINE ST. STA. 115+73 CONST. 1 4"X4 TREE FRAME
- LF. EAST WINE ST. STA. 115+73 CONST. 1 EA TREE FRAME
- LT. EAST WINE ST. STA. 116+00 TO 116+40 CONST. 23
- LF. TOWN BRANCH PAVEMENT
- LT. EAST WINE ST. STA. 114+22 TO 114+35 CONST. 50 LF SIGNATURE WALL

CITY CENTER BLOCK LOWER STREET TO STA. 117+00

- LT. EAST WINE ST. STA. 115+31 TO 115+48 CONST. 141
- LF. SIGNATURE PAVEMENT ON SLAB
- LT. EAST WINE ST. STA. 115+31 TO 115+48 CONST. 122
- LF. TOWN BRANCH PAVEMENT
- LT. EAST WINE ST. STA. 115+31 CONST. 1 EA STREET NAME PAVEMENT
- LF. EAST WINE ST. STA. 115+32 TO 117+00 CONST. 157
- LF. FLUSH CURB PAVEMENT
- LT. EAST WINE ST. STA. 114+28 TO 114+48 CONST. 172
- LF. TOWN BRANCH PAVEMENT
- LT. EAST WINE ST. STA. 114+28 TO 114+48 CONST. 172
- LF. TOWN BRANCH PAVEMENT
- LT. EAST WINE ST. STA. 114+47 TO 114+57 CONST. 1 EA PRECAST WALL INSERT
- LF. EAST WINE ST. STA. 114+47 TO 114+57 CONST. 1 EA PRECAST WALL INSERT
- LT. EAST WINE ST. STA. 114+47 TO 114+57 CONST. 1 EA PRECAST WALL END PIECE
- LF. EAST WINE ST. STA. 114+47 TO 114+57 CONST. 1 EA PRECAST WALL END PIECE

LEGEND

(H1)	CONCRETE PEDESTRIAN PATH/MULTI-USE PATH (SEE DETAIL 3/6/32)	(H12)	NOT USED
(H2)	CONCRETE BICYCLE PATH (SEE DETAIL 3/6/32)	(H13)	NOT USED
(H3)	TOWN BRANCH PAVEMENT SIGNATURE PAVEMENT (SEE DETAIL 3/6/32)	(H14)	SPALSH PAD (SEE DETAIL 3, SHEET 633)
(H4)	FLUSH CURB PAVEMENT (SEE DETAIL 3, SHEET 633)	(H15)	TYPICAL WALL WITH CAP (SEE DETAIL 2, SHEET 633)
(H5)	CONCRETE MULTI-USE AND BICYCLE PATH JOINT PATTERN (SEE DETAIL 3/6/32)	(H16)	TYPICAL WALL WITH CAP (SEE DETAIL 2, SHEET 633)
(H6)	CONCRETE MULTI-USE AND BICYCLE PATH JOINT PATTERN (SEE DETAIL 3/6/32)	(H17)	PROPOSED SIGNATURE PAVEMENT (SEE DETAIL 2, SHEET 633)
(H7)	CONCRETE MULTI-USE AND BICYCLE PATH JOINT PATTERN (SEE DETAIL 3/6/32)	(H18)	PROPOSED UTILITY POLES
(H8)	CONCRETE MULTI-USE AND BICYCLE PATH JOINT PATTERN (SEE DETAIL 3/6/32)	(H19)	VEHICULAR PAVED BENCH (SEE DETAIL 2 & 4, SHEET 633)
(H9)	CONCRETE MULTI-USE AND BICYCLE PATH JOINT PATTERN (SEE DETAIL 3/6/32)	(H20)	SMART CASERIE (SEE DETAIL 2, SHEETS 633)
(H10)	CONCRETE MULTI-USE AND BICYCLE PATH JOINT PATTERN (SEE DETAIL 3/6/32)	(H21)	DETECTABLE WARNING STRIP
(H11)	CONCRETE MULTI-USE AND BICYCLE PATH JOINT PATTERN (SEE DETAIL 3/6/32)	(H22)	NOT USED

GENERAL NOTES

- ALL DIMENSIONS SHOWN ARE TO BACK OF CURB UNLESS OTHERWISE INDICATED.
- SEE ELECTRICAL SHEETS BY OTHERS FOR COORDINATION AND INSTALLATION OF ALL ELECTRICAL EQUIPMENT, JUNCTION BOXES (JB), AND ALL NECESSARY CONDUIT ASSOCIATED WITH PEDESTRIAN CONDUIT.

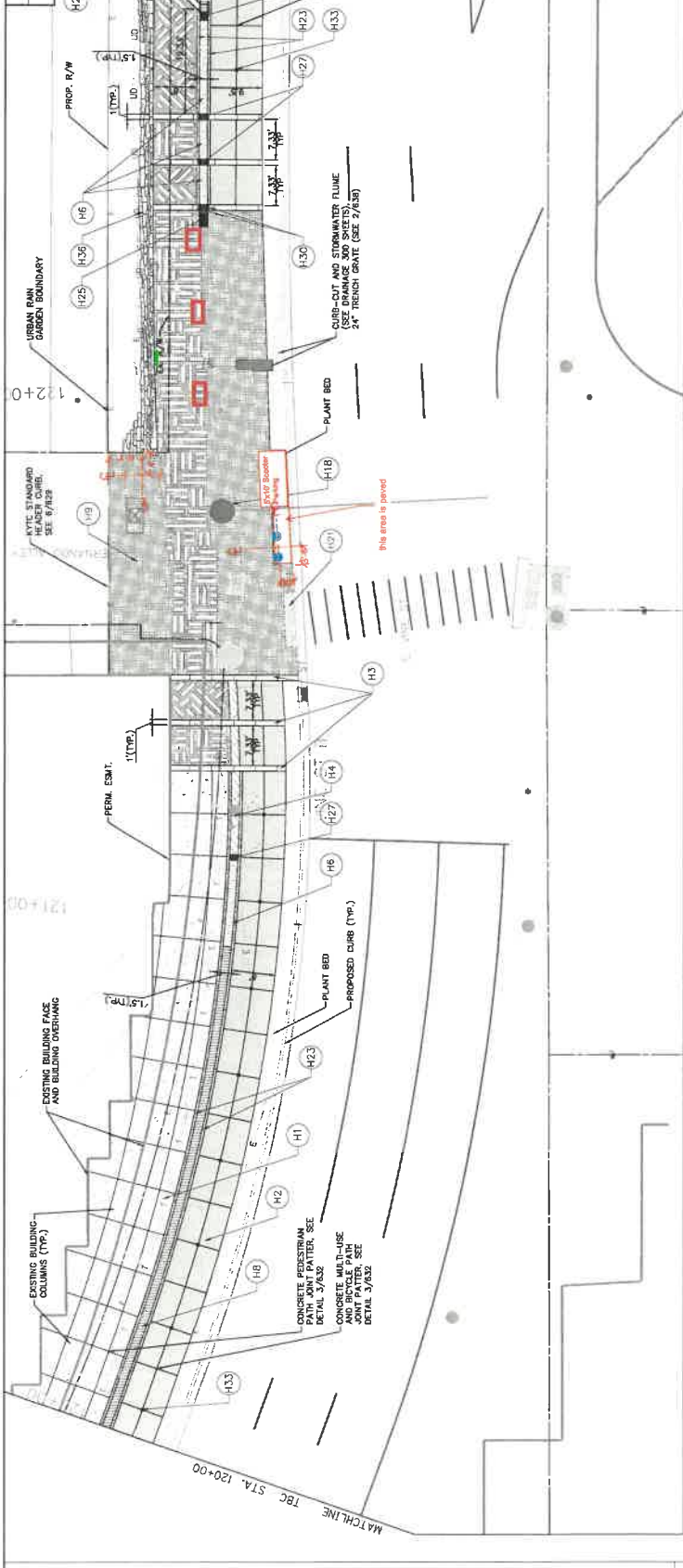
CITY CENTER BLOCK UPPER STREET TO STA. 117+00

- LT. EAST WINE ST. STA. 115+32 TO 117+00 CONST. 141
- LF. SIGNATURE PAVEMENT ON SLAB
- LT. EAST WINE ST. STA. 115+31 TO 115+48 CONST. 122
- LF. TOWN BRANCH PAVEMENT
- LT. EAST WINE ST. STA. 115+31 CONST. 1 EA STREET NAME PAVEMENT
- LF. EAST WINE ST. STA. 115+32 TO 117+00 CONST. 157
- LF. FLUSH CURB PAVEMENT
- LT. EAST WINE ST. STA. 114+28 TO 114+48 CONST. 172
- LF. TOWN BRANCH PAVEMENT
- LT. EAST WINE ST. STA. 114+28 TO 114+48 CONST. 172
- LF. TOWN BRANCH PAVEMENT
- LT. EAST WINE ST. STA. 114+47 TO 114+57 CONST. 1 EA PRECAST WALL INSERT
- LF. EAST WINE ST. STA. 114+47 TO 114+57 CONST. 1 EA PRECAST WALL INSERT
- LT. EAST WINE ST. STA. 114+47 TO 114+57 CONST. 1 EA PRECAST WALL END PIECE
- LF. EAST WINE ST. STA. 114+47 TO 114+57 CONST. 1 EA PRECAST WALL END PIECE

CITY CENTER BLOCK LOWER STREET TO STA. 117+00

- LT. EAST WINE ST. STA. 115+31 TO 115+48 CONST. 141
- LF. SIGNATURE PAVEMENT ON SLAB
- LT. EAST WINE ST. STA. 115+31 TO 115+48 CONST. 122
- LF. TOWN BRANCH PAVEMENT
- LT. EAST WINE ST. STA. 115+31 CONST. 1 EA STREET NAME PAVEMENT
- LF. EAST WINE ST. STA. 115+32 TO 117+00 CONST. 157
- LF. FLUSH CURB PAVEMENT
- LT. EAST WINE ST. STA. 114+28 TO 114+48 CONST. 172
- LF. TOWN BRANCH PAVEMENT
- LT. EAST WINE ST. STA. 114+28 TO 114+48 CONST. 172
- LF. TOWN BRANCH PAVEMENT
- LT. EAST WINE ST. STA. 114+47 TO 114+57 CONST. 1 EA PRECAST WALL INSERT
- LF. EAST WINE ST. STA. 114+47 TO 114+57 CONST. 1 EA PRECAST WALL INSERT
- LT. EAST WINE ST. STA. 114+47 TO 114+57 CONST. 1 EA PRECAST WALL END PIECE
- LF. EAST WINE ST. STA. 114+47 TO 114+57 CONST. 1 EA PRECAST WALL END PIECE





FILE NAME: C:\P\WPSE\DM5\48598\2375_H10-H19.DWG
 DATE PLOTTED: June 24, 2019
 USER: Remy

LEGEND

- TRASH & RECYCLE RECEPTACLES (SPACED 2' APART, TYP.)
- BIKE RACKS (SPACED 3' APART, TYP.)
- FIXED TABLES (TO BE LOCATED IN THE FIELD)

GENERAL NOTES

- ALL DIMENSIONS SHOWN ARE UNLESS OTHERWISE INDICATED.
- SEE ELECTRIC SHEETS BY OTHER CONTRACTORS FOR COORDINATION AND INSTALLATION OF LIGHT FIXTURES, JUNCTION BOXES (JB) AND CONDUIT ASSOCIATED WITH LIGHTING.

LEGEND

- CONCRETE PEDESTRIAN PATH (SEE DETAIL 3, SHEET 630)
- CONCRETE BICYCLE PATH (SEE DETAIL 3, SHEET 630)
- TOWN BRANCH PAVEMENT BANDING (SEE DETAIL 2, SHEET 630)
- FLUSH CURB PAVEMENT (SEE DETAIL 1, SHEET 630)
- PRECAST BENCH AND FOOTER (SEE DETAIL 4, SHEET 630)
- SIGNATURE WALL (SEE DETAIL 1, SHEET 630)
- VEHICULAR WALL (SEE DETAIL 2, SHEET 630)
- TYPICAL WALL W/O CAP (SEE DETAIL 1, SHEET 630)
- VEHICULAR RATIO BASE (SEE DETAILS 2 & 4, SHEET 630)
- SIGNATURE PAVING ON SLAB (SEE DETAIL 1, SHEET 630)
- CRUSHED STONE PAVING W/ BINDER (SEE DETAIL 3, SHEET 630)
- WATER FEATURE (SEE DETAIL SHEETS 640 THRU 649)

DATE PLOTTED: June 24, 2019
 USER: Remy

LEGEND

- CONCRETE PEDESTRIAN PATH (SEE DETAIL 3, SHEET 630)
- CONCRETE BICYCLE PATH (SEE DETAIL 3, SHEET 630)
- TOWN BRANCH PAVEMENT BANDING (SEE DETAIL 2, SHEET 630)
- FLUSH CURB PAVEMENT (SEE DETAIL 1, SHEET 630)
- PRECAST BENCH AND FOOTER (SEE DETAIL 4, SHEET 630)
- SIGNATURE WALL (SEE DETAIL 1, SHEET 630)
- VEHICULAR WALL (SEE DETAIL 2, SHEET 630)
- TYPICAL WALL W/O CAP (SEE DETAIL 1, SHEET 630)
- VEHICULAR RATIO BASE (SEE DETAILS 2 & 4, SHEET 630)
- SIGNATURE PAVING ON SLAB (SEE DETAIL 1, SHEET 630)
- CRUSHED STONE PAVING W/ BINDER (SEE DETAIL 3, SHEET 630)
- WATER FEATURE (SEE DETAIL SHEETS 640 THRU 649)

GENERAL NOTES

- ALL DIMENSIONS SHOWN ARE UNLESS OTHERWISE INDICATED.
- SEE ELECTRIC SHEETS BY OTHER CONTRACTORS FOR COORDINATION AND INSTALLATION OF LIGHT FIXTURES, JUNCTION BOXES (JB) AND CONDUIT ASSOCIATED WITH LIGHTING.

LEGEND

- CONCRETE PEDESTRIAN PATH (SEE DETAIL 3, SHEET 630)
- CONCRETE BICYCLE PATH (SEE DETAIL 3, SHEET 630)
- TOWN BRANCH PAVEMENT BANDING (SEE DETAIL 2, SHEET 630)
- FLUSH CURB PAVEMENT (SEE DETAIL 1, SHEET 630)
- PRECAST BENCH AND FOOTER (SEE DETAIL 4, SHEET 630)
- SIGNATURE WALL (SEE DETAIL 1, SHEET 630)
- VEHICULAR WALL (SEE DETAIL 2, SHEET 630)
- TYPICAL WALL W/O CAP (SEE DETAIL 1, SHEET 630)
- VEHICULAR RATIO BASE (SEE DETAILS 2 & 4, SHEET 630)
- SIGNATURE PAVING ON SLAB (SEE DETAIL 1, SHEET 630)
- CRUSHED STONE PAVING W/ BINDER (SEE DETAIL 3, SHEET 630)
- WATER FEATURE (SEE DETAIL SHEETS 640 THRU 649)

LEGEND

- CONCRETE PEDESTRIAN PATH (SEE DETAIL 3, SHEET 630)
- CONCRETE BICYCLE PATH (SEE DETAIL 3, SHEET 630)
- TOWN BRANCH PAVEMENT BANDING (SEE DETAIL 2, SHEET 630)
- FLUSH CURB PAVEMENT (SEE DETAIL 1, SHEET 630)
- PRECAST BENCH AND FOOTER (SEE DETAIL 4, SHEET 630)
- SIGNATURE WALL (SEE DETAIL 1, SHEET 630)
- VEHICULAR WALL (SEE DETAIL 2, SHEET 630)
- TYPICAL WALL W/O CAP (SEE DETAIL 1, SHEET 630)
- VEHICULAR RATIO BASE (SEE DETAILS 2 & 4, SHEET 630)
- SIGNATURE PAVING ON SLAB (SEE DETAIL 1, SHEET 630)
- CRUSHED STONE PAVING W/ BINDER (SEE DETAIL 3, SHEET 630)
- WATER FEATURE (SEE DETAIL SHEETS 640 THRU 649)

GENERAL NOTES

- ALL DIMENSIONS SHOWN ARE UNLESS OTHERWISE INDICATED.
- SEE ELECTRIC SHEETS BY OTHER CONTRACTORS FOR COORDINATION AND INSTALLATION OF LIGHT FIXTURES, JUNCTION BOXES (JB) AND CONDUIT ASSOCIATED WITH LIGHTING.

LEGEND

- CONCRETE PEDESTRIAN PATH (SEE DETAIL 3, SHEET 630)
- CONCRETE BICYCLE PATH (SEE DETAIL 3, SHEET 630)
- TOWN BRANCH PAVEMENT BANDING (SEE DETAIL 2, SHEET 630)
- FLUSH CURB PAVEMENT (SEE DETAIL 1, SHEET 630)
- PRECAST BENCH AND FOOTER (SEE DETAIL 4, SHEET 630)
- SIGNATURE WALL (SEE DETAIL 1, SHEET 630)
- VEHICULAR WALL (SEE DETAIL 2, SHEET 630)
- TYPICAL WALL W/O CAP (SEE DETAIL 1, SHEET 630)
- VEHICULAR RATIO BASE (SEE DETAILS 2 & 4, SHEET 630)
- SIGNATURE PAVING ON SLAB (SEE DETAIL 1, SHEET 630)
- CRUSHED STONE PAVING W/ BINDER (SEE DETAIL 3, SHEET 630)
- WATER FEATURE (SEE DETAIL SHEETS 640 THRU 649)

LEGEND

- CONCRETE PEDESTRIAN PATH (SEE DETAIL 3, SHEET 630)
- CONCRETE BICYCLE PATH (SEE DETAIL 3, SHEET 630)
- TOWN BRANCH PAVEMENT BANDING (SEE DETAIL 2, SHEET 630)
- FLUSH CURB PAVEMENT (SEE DETAIL 1, SHEET 630)
- PRECAST BENCH AND FOOTER (SEE DETAIL 4, SHEET 630)
- SIGNATURE WALL (SEE DETAIL 1, SHEET 630)
- VEHICULAR WALL (SEE DETAIL 2, SHEET 630)
- TYPICAL WALL W/O CAP (SEE DETAIL 1, SHEET 630)
- VEHICULAR RATIO BASE (SEE DETAILS 2 & 4, SHEET 630)
- SIGNATURE PAVING ON SLAB (SEE DETAIL 1, SHEET 630)
- CRUSHED STONE PAVING W/ BINDER (SEE DETAIL 3, SHEET 630)
- WATER FEATURE (SEE DETAIL SHEETS 640 THRU 649)

GENERAL NOTES

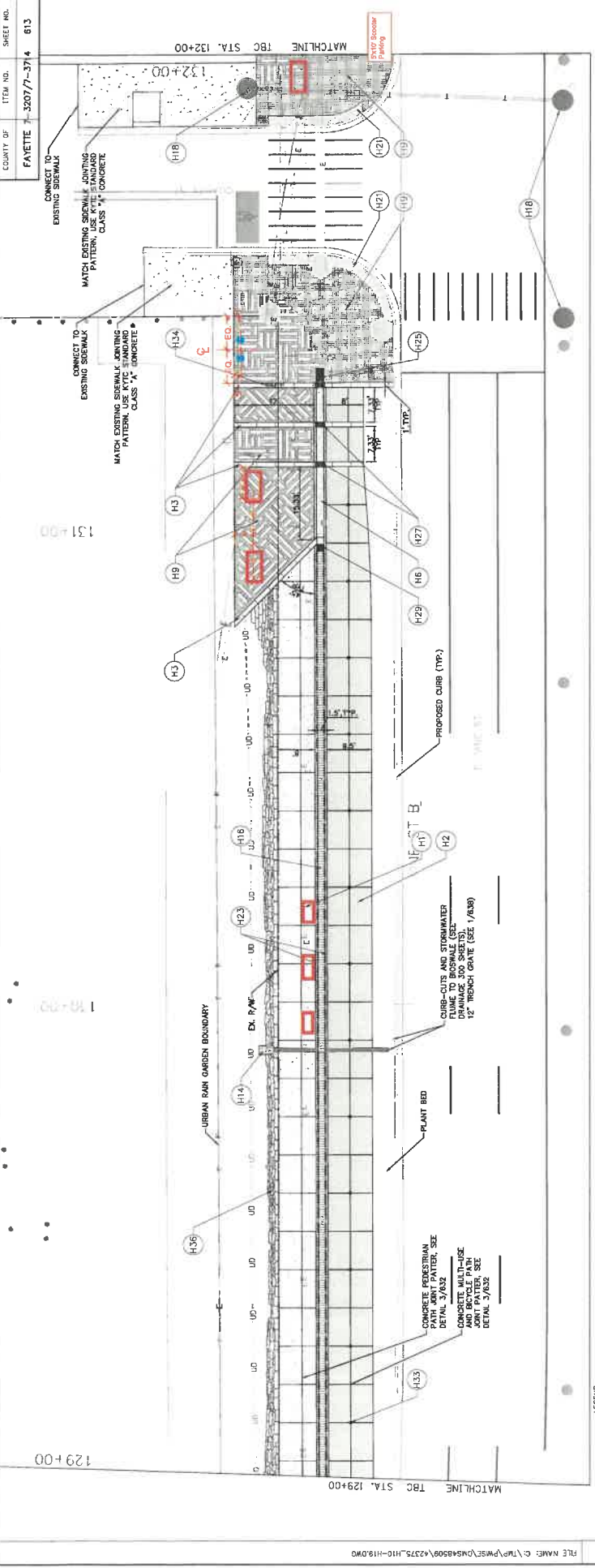
- ALL DIMENSIONS SHOWN ARE UNLESS OTHERWISE INDICATED.
- SEE ELECTRIC SHEETS BY OTHER CONTRACTORS FOR COORDINATION AND INSTALLATION OF LIGHT FIXTURES, JUNCTION BOXES (JB) AND CONDUIT ASSOCIATED WITH LIGHTING.

LEGEND

- CONCRETE PEDESTRIAN PATH (SEE DETAIL 3, SHEET 630)
- CONCRETE BICYCLE PATH (SEE DETAIL 3, SHEET 630)
- TOWN BRANCH PAVEMENT BANDING (SEE DETAIL 2, SHEET 630)
- FLUSH CURB PAVEMENT (SEE DETAIL 1, SHEET 630)
- PRECAST BENCH AND FOOTER (SEE DETAIL 4, SHEET 630)
- SIGNATURE WALL (SEE DETAIL 1, SHEET 630)
- VEHICULAR WALL (SEE DETAIL 2, SHEET 630)
- TYPICAL WALL W/O CAP (SEE DETAIL 1, SHEET 630)
- VEHICULAR RATIO BASE (SEE DETAILS 2 & 4, SHEET 630)
- SIGNATURE PAVING ON SLAB (SEE DETAIL 1, SHEET 630)
- CRUSHED STONE PAVING W/ BINDER (SEE DETAIL 3, SHEET 630)
- WATER FEATURE (SEE DETAIL SHEETS 640 THRU 649)



DATE PLOTTED: June 24, 2019
 USER: Remy



LEGEND

(H1)	CONCRETE PERESTRAN (SEE DETAIL 1, SHEET 630)	(H35)	KARST STREAMEDED (SEE DETAIL 3, SHEET 6)
(H2)	CONCRETE BICYCLE PATH (SEE DETAIL 3, SHEET 633)	(H36)	KARST ENHANCEMENT (SEE DETAIL 4, SHEET 6)
(H3)	TOWN BRANCH PAVEMENT BANDING (SEE DETAIL 2, SHEET 632 FOR SCHEDULE 3, SHEET 630 FOR ADJACENT CONCRETE)	(H37)	EDUCATIONAL SIGNAGE (SEE SHEET 850)
(H4)	FLUSH CURB PAVEMENT (SEE DETAIL 1, SHEET 634)	(H38)	CRUSHED STONE EDGING W/ BINDER (SEE DETAIL 4, SHEET 631)
(H5)	PRECAST BENCH AND FOOTER (SEE DETAIL 4, SHEET 635)	(H39)	PRECAST BENCH ON TUBE FOOTER (SEE DETAIL 5, SHEET 633)
(H6)	VEHICULAR WALL (SEE DETAIL 1, SHEET 634)	(H40)	PRECAST WALL END PIECE-A (SEE DETAIL 3, SHEET 634)
(H7)	VEHICULAR WALL W/O CAP (SEE DETAIL 2, SHEET 633)	(H41)	PRECAST WALL END PIECE-B (SEE DETAIL 2, SHEET 633)
(H8)	TYPICAL WALL W/O CAP (SEE DETAIL 2, SHEET 633)	(H42)	PRECAST WALL INSERT (SEE DETAIL 4, SHEET 634)
(H9)	SIGNATURE PAVING ON SLAB (SEE DETAIL 1, SHEET 631)	(H43)	PRECAST TRANSITION INSERT (SEE DETAIL 1, SHEET 633)
(H10)	CRUSHED STONE PAVING W/ BINDER (SEE DETAIL 3, SHEET 631)	(H44)	PRECAST 45° WALL INSERT (SEE DETAIL 1, SHEET 633)
(H11)	WATER FEATURE (SEE DETAIL SHEETS 640 THRU 649)	(H45)	MOUNTING AND ELECTRICAL SHEETS FOR DETAIL INFO

(H12)	NOT USED	(H46)	UP-LIGHT SIGNAGE (USE 400 WATT COMPACT FLUORESCENT LIGHTS FOR DETAIL INFO)
(H13)	NOT USED	(H47)	4"x4" SQUARE TREE FRAME AT SOIL CELLS (SEE DETAIL 3, SHEET 260)
(H14)	SPLASH PAD (SEE DETAIL 3, SHEET 633)	(H48)	STREET NAME IN PAVING BANDING (SEE DETAIL 1, SHEET 629)
(H15)	UNIT BOLLARD (SEE DETAIL 2, SHEET 639)	(H49)	NOT USED
(H16)	TYPICAL WALL WITH CAP (SEE DETAIL 1, SHEET 634)	(H50)	
(H17)	PERMEABLE SIGNATURE PAVING (SEE DETAIL 2, SHEET 631)	(H51)	
(H18)	PROPOSED UTILITY POLES (SEE DETAILS 2 & 4, SHEET 630)	(H52)	
(H19)	VEHICULAR RATED BASE (SEE DETAILS 2 & 4, SHEET 630)	(H53)	
(H20)	KARST CASCADE (SEE DETAIL 2, SHEETS 631)	(H54)	
(H21)	DETECTABLE WARNING STRIP (SEE DETAIL 3, SHEET 631)	(H55)	

GENERAL NOTES

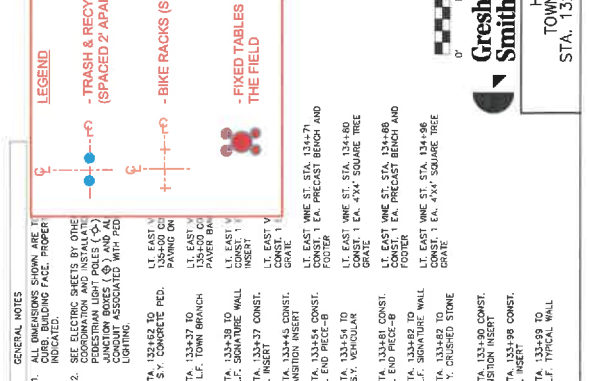
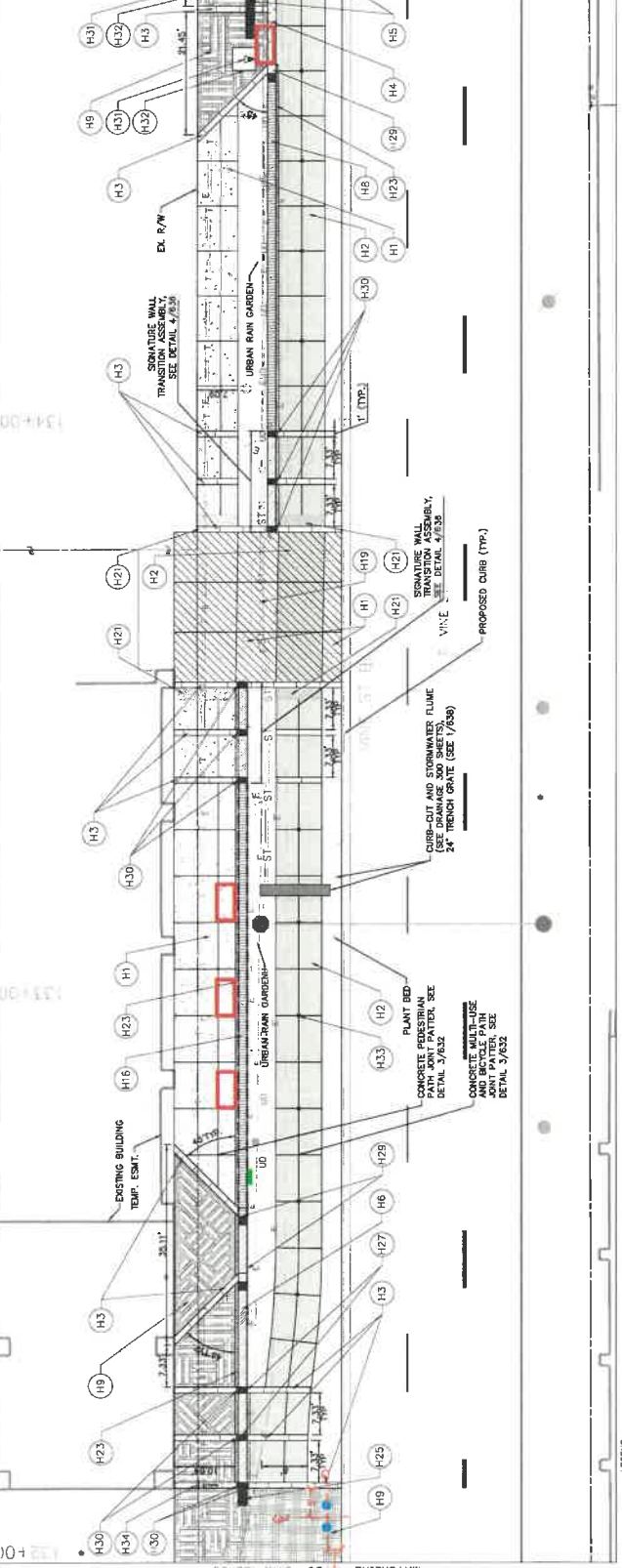
- ALL DIMENSIONS SHOWN ARE UNLESS OTHERWISE INDICATED.
- SEE ELECTRIC SHEETS B FOR COORDINATION AND INSTANTANEOUS JUNCTION BOXES (J) AND CONDUIT ASSOCIATED WITH LIGHTING.

LEGEND

- TRASH & RECYCLE RECEPTACLES (SPACED 2' APART, TYP.)
- BIKE RACKS (SPACED 3' APART, TYP.)
- FIXED TABLES (TO BE LOCATED IN THE FIELD)

SCALE
0' 20' 40'

Gresham Smith
LEXINGTON
HARDSCAPE PLAN
TOWN BRANCH COMMONS
STA. 129+00 TO STA. 132+00



GENERAL NOTES

- SEE SIGNAGE SHEETS FOR CURB BUILDING FACILITY INDICATED.
- SEE ELECTRIC SHEETS BY OTHER CONSULTANTS FOR COORDINATION AND INSTALLATION OF ELECTRICAL JUNCTION BOXES (E) AND ALL CONDUIT ASSOCIATED WITH PID LIGHTING.

LEGEND

- TRASH & RECYCLE RECEPTACLES (SPACED 2' APART, TYP.)
- BIKE RACKS (SPACED 3' APART, TYP.)
- FIXED TABLES (TO BE LOCATED IN THE FIELD)

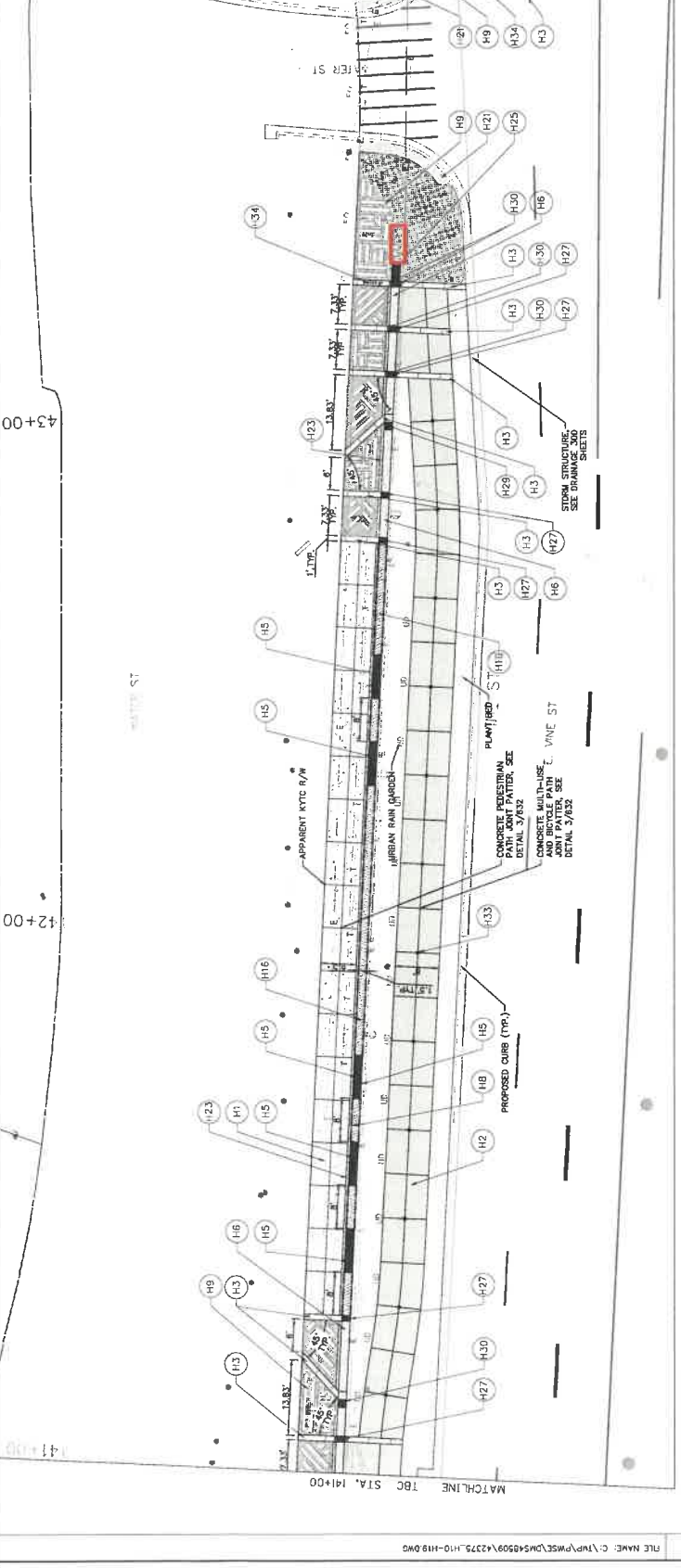
GENERAL NOTES

- SEE SIGNAGE SHEETS FOR CURB BUILDING FACILITY INDICATED.
- SEE ELECTRIC SHEETS BY OTHER CONSULTANTS FOR COORDINATION AND INSTALLATION OF ELECTRICAL JUNCTION BOXES (E) AND ALL CONDUIT ASSOCIATED WITH PID LIGHTING.

LEGEND

- TRASH & RECYCLE RECEPTACLES (SPACED 2' APART, TYP.)
- BIKE RACKS (SPACED 3' APART, TYP.)
- FIXED TABLES (TO BE LOCATED IN THE FIELD)

FILE NAME: C:\P\PMSE\0546509\42375_H10-H19.DWG
DATE PLOTTED: June 24, 2019
USER: Henry



LEGEND:

- TRASH & RECYCLE RECEPTACLES (SPACED 2' APART, TYP.)
- BIKE RACKS (SPACED 3' APART, TYP.)
- FIXED TABLES (TO BE LOCATED IN THE FIELD)

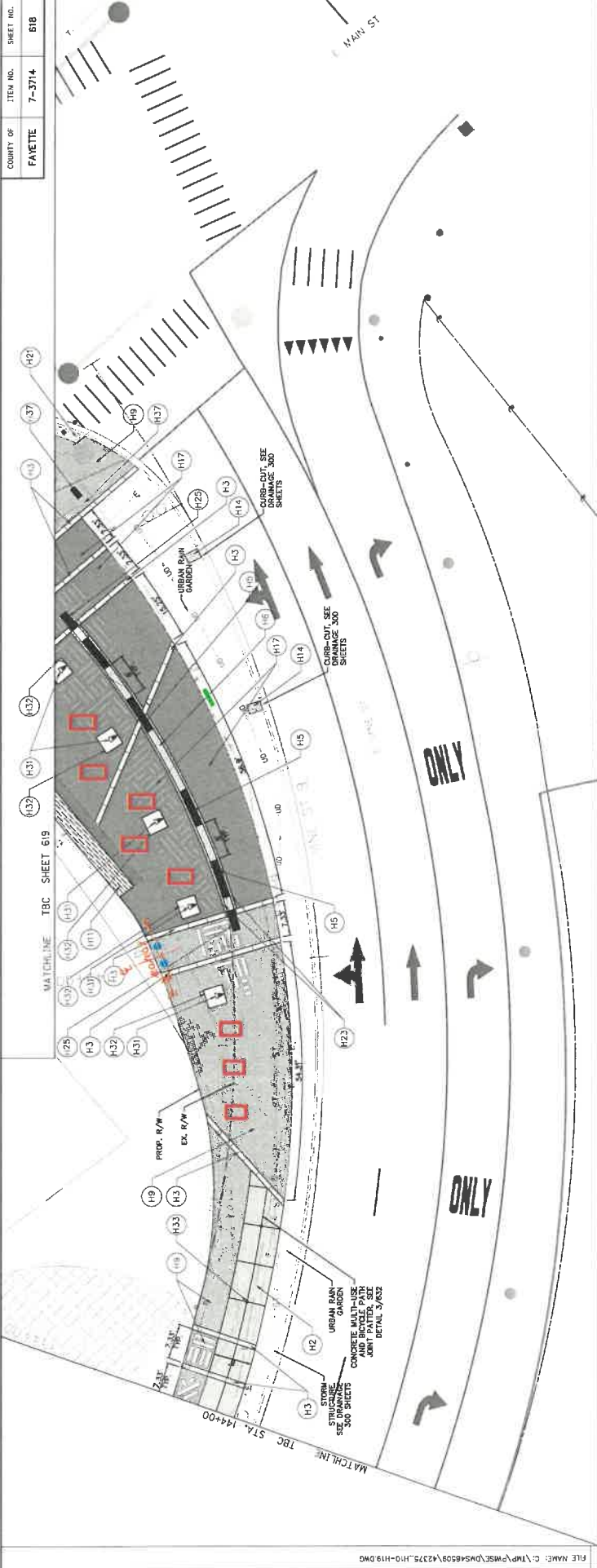
GENERAL NOTES

- ALL DIMENSIONS SHOWN ARE CORRECTION BUILDING FAC. PROP. INDICATED.
- ALL DIMENSIONS SHOWN ARE CORRECTION BUILDING FAC. PROP. INDICATED.
- ALL DIMENSIONS SHOWN ARE CORRECTION BUILDING FAC. PROP. INDICATED.

LEGEND:

(H1) CONCRETE PEDESTRIAN BARRIER (SEE DETAIL 1, SHEET 830)	(H12) NOT USED	(H23) CRUSHED STONE EDGING W/ BINDER (SEE DETAIL 3, SHEET 816)	(H35) KARST STREAMBED (SEE DETAIL 3, SHEET 816)	(H43) KARST EMBANKMENT (SEE DETAIL 4, SHEET 817)	(H53) APPARENT KYTC R/W
(H2) CONCRETE BICYCLE PATH (SEE DETAIL 3, SHEET 830)	(H13) NOT USED	(H24) SPLASH PAD (SEE DETAIL 3, SHEET 833)	(H36) KARST EMBANKMENT (SEE DETAIL 4, SHEET 817)	(H44) TOWN BRANCH PAVEMENT (SEE DETAIL 2, SHEET 834)	(H54) CONCRETE PEDESTRIAN BARRIER (SEE DETAIL 1, SHEET 830)
(H3) TOWN BRANCH PAVEMENT (SEE DETAIL 2, SHEET 834)	(H14) NOT USED	(H25) UNIT BOLLARD (SEE DETAIL 2, SHEET 839)	(H37) EDUCATIONAL SIGNAGE (SEE SHEET 830)	(H45) PRECAST WALL END PIECE-A (SEE DETAIL 3, SHEET 834)	(H55) CONCRETE WALL WITH JOINT PATTERN (SEE DETAIL 2/832)
(H4) FLUSH CURB PAVEMENT (SEE DETAIL 1, SHEET 832)	(H15) NOT USED	(H26) TYPICAL WALL WITH CAP (SEE DETAIL 1, SHEET 835)	(H38) CRUSHED STONE EDGING W/ BINDER (SEE DETAIL 3, SHEET 816)	(H46) PRECAST WALL INSERT (SEE DETAIL 2, SHEET 833)	(H56) CONCRETE WALL WITH JOINT PATTERN (SEE DETAIL 2/832)
(H5) PRECAST BENCH AND FOOTER (SEE DETAIL 4, SHEET 834)	(H16) NOT USED	(H27) PERMEABLE SIGNATURE PAVING (SEE DETAIL 2, SHEET 831)	(H39) CRUSHED STONE EDGING W/ BINDER (SEE DETAIL 3, SHEET 816)	(H47) PRECAST WALL INSERT (SEE DETAIL 2, SHEET 833)	(H57) CONCRETE WALL WITH JOINT PATTERN (SEE DETAIL 2/832)
(H6) SIGNATURE WALL (SEE DETAIL 1, SHEET 833)	(H17) NOT USED	(H28) PROPOSED UTILITY POLES (SEE DETAIL 2, SHEET 831)	(H40) CRUSHED STONE EDGING W/ BINDER (SEE DETAIL 3, SHEET 816)	(H48) PRECAST WALL INSERT (SEE DETAIL 2, SHEET 833)	(H58) CONCRETE WALL WITH JOINT PATTERN (SEE DETAIL 2/832)
(H7) SIGNATURE WALL W/ CAP (SEE DETAIL 1, SHEET 833)	(H18) NOT USED	(H29) VERTICAL RATED BASE (SEE DETAILS 2 & 4, SHEET 830)	(H41) CRUSHED STONE EDGING W/ BINDER (SEE DETAIL 3, SHEET 816)	(H49) PRECAST WALL INSERT (SEE DETAIL 2, SHEET 833)	(H59) CONCRETE WALL WITH JOINT PATTERN (SEE DETAIL 2/832)
(H8) TYPICAL WALL W/ CAP (SEE DETAIL 1, SHEET 833)	(H19) NOT USED	(H30) KARST CASCADE (SEE DETAIL 2, SHEETS 835)	(H42) DETECTABLE WARNING STRIP (SEE DETAIL 1, SHEET 831)	(H50) PRECAST WALL INSERT (SEE DETAIL 2, SHEET 833)	(H60) CONCRETE WALL WITH JOINT PATTERN (SEE DETAIL 2/832)
(H9) SIGNATURE PAVING ON SLAB (SEE DETAIL 1, SHEET 831)	(H20) NOT USED	(H31) KARST CASCADE (SEE DETAIL 2, SHEETS 835)	(H44) DETECTABLE WARNING STRIP (SEE DETAIL 1, SHEET 831)	(H51) PRECAST WALL INSERT (SEE DETAIL 2, SHEET 833)	(H61) CONCRETE WALL WITH JOINT PATTERN (SEE DETAIL 2/832)
(H10) CRUSHED STONE PAVING W/ BINDER (SEE DETAIL 3, SHEET 831)	(H21) NOT USED	(H32) KARST CASCADE (SEE DETAIL 2, SHEETS 835)	(H45) DETECTABLE WARNING STRIP (SEE DETAIL 1, SHEET 831)	(H52) PRECAST WALL INSERT (SEE DETAIL 2, SHEET 833)	(H62) CONCRETE WALL WITH JOINT PATTERN (SEE DETAIL 2/832)
(H11) WATER FEATURE (SEE DETAIL SHEETS 840 THRU 848)	(H22) NOT USED	(H33) KARST CASCADE (SEE DETAIL 2, SHEETS 835)	(H46) DETECTABLE WARNING STRIP (SEE DETAIL 1, SHEET 831)	(H53) PRECAST WALL INSERT (SEE DETAIL 2, SHEET 833)	(H63) CONCRETE WALL WITH JOINT PATTERN (SEE DETAIL 2/832)

Gresham Smith
LEXINGTON
 HARDSHAPE PLAN
 TOWN BRANCH COMMONS
 STA. 141+00 TO STA. 144+00



LEGEND

(H1)	CONCRETE PEDESTRIAN PART/MULTI-USE PATH (SEE DETAIL 1, SHEET 630)	(H12)	NOT USED	(H23)	URBAN RAIN GARDEN (SEE DETAIL 1, SHEET 630)	(H35)	KARST STICAMBED (SEE DETAIL 3, SHEET 8)	(K1)	TRASH & RECYCLE RECEPTACLES (SPACED 2' APART, TYP.)
(H2)	CONCRETE BICYCLE PATH (SEE DETAIL 1, SHEET 630)	(H13)	NOT USED	(H24)	WASH PAD (SEE DETAIL 3, SHEET 633)	(H36)	KARST EMBANKMENT (SEE DETAIL 4, SHEET 6)	(K2)	BIKE RACKS (SPACED 3' APART, TYP.)
(H3)	CONCRETE BIKEWAY MARKING (SEE DETAIL 2, SHEET 632 FOR ADDITIONAL PAVES, SEE DETAIL 3, SHEET 632 FOR ADDING CONCRETE)	(H14)	UNIT DOLLARD (SEE DETAIL 2, SHEET 633)	(H25)	PERMEABLE SIGNATURE PAVING (SEE DETAIL 2, SHEET 633)	(H37)	EDUCATIONAL SIGNAGE (SEE SHEET 630)	(K3)	FIXED TABLES (TO BE LOCATED IN THE FIELD)
(H4)	TYPICAL WALL WITH CAP (SEE DETAIL 1, SHEET 632)	(H15)	PERMEABLE SIGNATURE PAVING (SEE DETAIL 2, SHEET 633)	(H26)	PROPOSED UTILITY POLES	(H38)	LT. EAST VINE ST. STA. 144+00 TO 145+12 CONST. 198 S.Y. SIGNATURE PAVING ON SLAB		
(H5)	PRECAST BENCH AND FOOTER (SEE DETAIL 4, SHEET 630)	(H16)	VEHICULAR RATED BASE (SEE DETAILS 2 & 4, SHEET 630)	(H27)	UP-LIGHT SYMBOL (SEE 400 SHEETS FOR DETAIL INFO)	(H39)	LT. EAST VINE ST. STA. 145+12 TO 146+13 CONST. 99 BRANCH PARKER BAY SIGNATURE PAVING		
(H6)	SIGNATURE WALL (SEE DETAIL 1, SHEET 634)	(H17)	LOG-LIGHT AND ELECTRICAL SYMBOLS FOR DETAIL INFO	(H28)	SOIL COLLECTOR TREE FRAME AT 8" DIAMETER JANE MARKER (SEE DETAIL 5, SHEET 639)	(H40)	LT. EAST VINE ST. STA. 145+12 TO 146+13 CONST. 7 S.Y. CRUSHED STONE CURBING W/ BINDER		
(H7)	VEHICULAR WALL (SEE DETAIL 1, SHEET 633)	(H18)	VEHICULAR RATED BASE (SEE DETAILS 2 & 4, SHEET 630)	(H29)	8" DIAMETER JANE MARKER (SEE DETAIL 5, SHEET 639)	(H41)	LT. EAST VINE ST. STA. 145+12 TO 146+13 CONST. 10 S.Y. WATER PERMEABLE		
(H8)	TYPICAL WALL W/O CAP (SEE DETAIL 1, SHEET 633)	(H19)	KARST CASCADIC (SEE DETAIL 2, SHEETS 634)	(H30)	DETECTABLE WARNING STRIP (SEE DETAIL 1, SHEET 632)	(H42)	LT. EAST VINE ST. STA. 145+12 TO 146+13 CONST. 10 S.Y. WATER PERMEABLE		
(H9)	SIGNATURE PAVING ON SLAB (SEE DETAIL 3, SHEET 631)	(H20)	DETECTABLE WARNING STRIP (SEE DETAIL 1, SHEET 632)	(H31)	RETREAT INVADE	(H43)	LT. EAST VINE ST. STA. 145+12 TO 146+13 CONST. 10 S.Y. WATER PERMEABLE		
(H10)	CRUSHED STONE PAVING W/ BINDER (SEE DETAIL 3, SHEET 631)	(H21)	NOT USED	(H32)		(H44)	LT. EAST VINE ST. STA. 145+12 TO 146+13 CONST. 10 S.Y. WATER PERMEABLE		
(H11)	WATER FEATURE (SEE DETAIL SHEETS 640 THRU 649)	(H22)	NOT USED	(H33)		(H45)	LT. EAST VINE ST. STA. 145+12 TO 146+13 CONST. 10 S.Y. WATER PERMEABLE		

GENERAL NOTES

- ALL DIMENSIONS SHOWN ARE TO FACE UNLESS OTHERWISE NOTED.
- SEE ELECTRICAL SHEETS BY OTHERS FOR LIGHTING, PEDESTRIAN LIGHT POLES (L.P.), AND ALL NECESSARY ELECTRICAL BOXES AND ALL NECESSARY LIGHTING, ASSOCIATED WITH PEDESTRIAN LIGHTING.

LEGEND

- TRASH & RECYCLE RECEPTACLES (SPACED 2' APART, TYP.)
- BIKE RACKS (SPACED 3' APART, TYP.)
- FIXED TABLES (TO BE LOCATED IN THE FIELD)

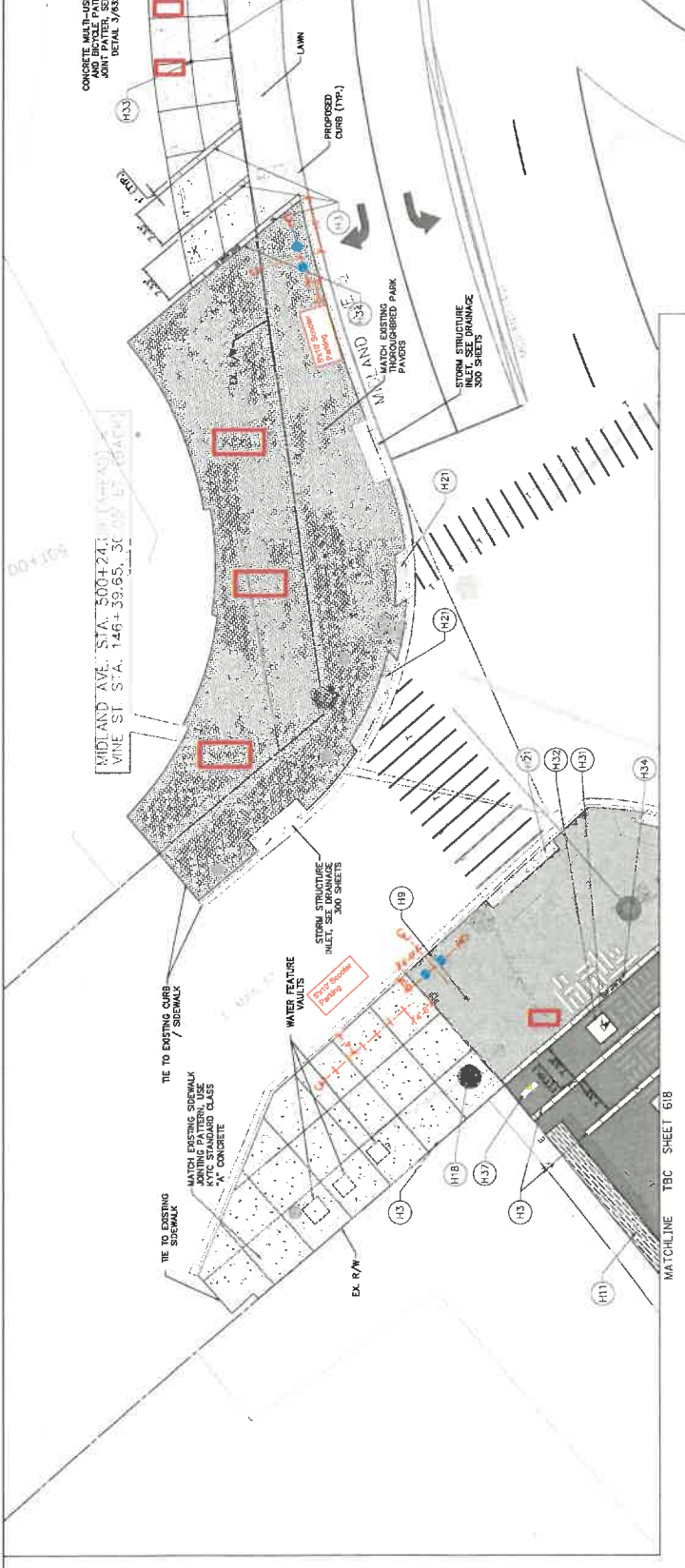
SCALE

0' 20' 40'

Gresham Smith

LEXINGTON

HARDSCAPE PLAN
TOWN BRANCH COMMONS
STA. 144+00 TO STA. 146+39.65 (500+24.09)



LEGEND

- (H1) CONCRETE PERISTRIUM PATH/MULTI-USE PATH (SEE DETAIL 1, SHEET 630)
- (H2) CONCRETE BICYCLE PATH (SEE DETAIL 3, SHEET 630)
- (H3) TOWN BRANCH PAPER BANDING (SEE DETAILS 1, 2, 3, 4, 5, 6, 7, 8, 9, 10, 11, 12, 13, 14, 15, 16, 17, 18, 19, 20, 21, 22, 23, 24, 25, 26, 27, 28, 29, 30, 31, 32, 33, 34, 35, 36, 37, 38, 39, 40, 41, 42, 43, 44, 45, 46, 47, 48, 49, 50, 51, 52, 53, 54, 55, 56, 57, 58, 59, 60, 61, 62, 63, 64, 65, 66, 67, 68, 69, 70, 71, 72, 73, 74, 75, 76, 77, 78, 79, 80, 81, 82, 83, 84, 85, 86, 87, 88, 89, 90, 91, 92, 93, 94, 95, 96, 97, 98, 99, 100)
- (H4) FLUSH CURB PAPER (SEE DETAIL 1, SHEET 632)
- (H5) PRECAST BENCH AND FOOTER (SEE DETAIL 1, SHEET 632)
- (H6) SQUARE WALL (SEE DETAIL 2, SHEET 634)
- (H7) VEHICULAR WALL (SEE DETAIL 1, SHEET 633)
- (H8) TYPICAL WALL W/O CAP (SEE DETAIL 2, SHEET 634)
- (H9) SIGNATURE FINISH ON CURB (SEE DETAIL 1, SHEET 633)
- (H10) CRUSHED STONE PAVING W/ BINDER (SEE DETAIL 3, SHEET 635)
- (H11) WATER FEATURE (SEE DETAIL SHEETS 640 THRU 644)

LEGEND

- (H12) NOT USED
- (H13) NOT USED
- (H14) SPLASH PAD (SEE DETAIL 3, SHEET 633)
- (H15) UNIT BOLLARD (SEE DETAIL 2, SHEET 635)
- (H16) TYPICAL WALL WITH CAP (SEE DETAIL 1, SHEET 634)
- (H17) PERMEABLE SIGNATURE PAVING (SEE DETAIL 4, SHEET 635)
- (H18) PROPOSED UTILITY POLES
- (H19) VEHICULAR RATED BASE (SEE DETAILS 2 & 4, SHEET 630)
- (H20) MARST CASING (SEE DETAIL 2, SHEETS 636)
- (H21) DETECTABLE WARNING STRIP
- (H22) NOT USED
- (H23) NOT USED

LEGEND

- (H24) CRUSHED STONE EDGING W/ BINDER (SEE DETAIL 5, SHEET 633)
- (H25) PRECAST BENCH ON TUBE FOOTER (SEE DETAIL 5, SHEET 635)
- (H26) PRECAST WALL END PIECE-A (SEE DETAIL 3, SHEET 634)
- (H27) PRECAST WALL END PIECE-B (SEE DETAIL 2, SHEET 635)
- (H28) PRECAST WALL INSERT (SEE DETAIL 4, SHEET 634)
- (H29) PRECAST TRANSITION INSERT (SEE DETAIL 1, SHEET 635)
- (H30) PRECAST 4" WALL INSERT (SEE DETAIL 1, SHEET 635)
- (H31) WALL-LIGHT SYMBOLS (SEE 400 SHEETS FOR DETAIL INFO)
- (H32) LIGHTING AND ELECTRICAL SHEETS FOR DETAIL INFO (SEE 400 SHEETS FOR DETAIL INFO)
- (H33) 4" X 4" SQUARE TREE FRAME AT 1 EA. 4" X 4" SQUARE TREE GRATE
- (H34) 8" DIAMETER LANE MARKER (SEE DETAIL 3, SHEET 632)
- (H35) STREET NAME IN PAVING BAND (SEE DETAIL 1, SHEET 632)

LEGEND

- (H36) MARST STREAMS (SEE DETAIL 3, SHEET 637)
- (H37) MARST DAMMANTY (SEE DETAIL 4, SHEET 637)
- (H38) EDUCATIONAL SIGNAGE (SEE SHEET 650)
- (H39) L.T. MIDLAND AVE. STA. 500+24.1 TO 501+40 CONST. 8' L.F. STREET NAME PAVING
- (H40) L.T. MIDLAND AVE. STA. 501+40 TO 502+00 CONST. 8' L.F. TOWN BRANCH PAPER BANDING
- (H41) L.T. MIDLAND AVE. STA. 501+24 TO 502+00 CONST. 8' L.F. CONCRETE MULTI-USE PATH
- (H42) L.T. MIDLAND AVE. STA. 501+44 TO 502+00 CONST. 12' S.Y. PROMENADE SIGNATURE PAVING
- (H43) L.T. EAST VINE ST. STA. 145+92 TO 146+18 CONST. 12' S.Y. WATER FEATURE
- (H44) L.T. EAST VINE ST. STA. 145+91 TO 146+42 CONST. 72' S.Y. SIGNATURE PAVING
- (H45) L.T. EAST VINE ST. STA. 146+18 TO 146+18 CONST. 125' S.Y. CONCRETE PRED PATH
- (H46) L.T. EAST VINE ST. STA. 145+92 TO 146+18 CONST. 12' S.Y. PROMENADE SIGNATURE PAVING
- (H47) L.T. EAST VINE ST. STA. 146+13 CONST. 1 EA. 4" X 4" SQUARE TREE GRATE
- (H48) L.T. EAST VINE ST. STA. 145+77 TO 146+18 CONST. 107' L.F. TOWN BRANCH PAPER BANDING
- (H49) L.T. EAST VINE ST. STA. 145+91 TO 146+18 CONST. 6' L.F. STREET NAME PAVING
- (H50) L.T. MIDLAND AVE. STA. 500+36 TO 500+40 CONST. 397' S.Y. THOROUGHBRID PARK PAVING

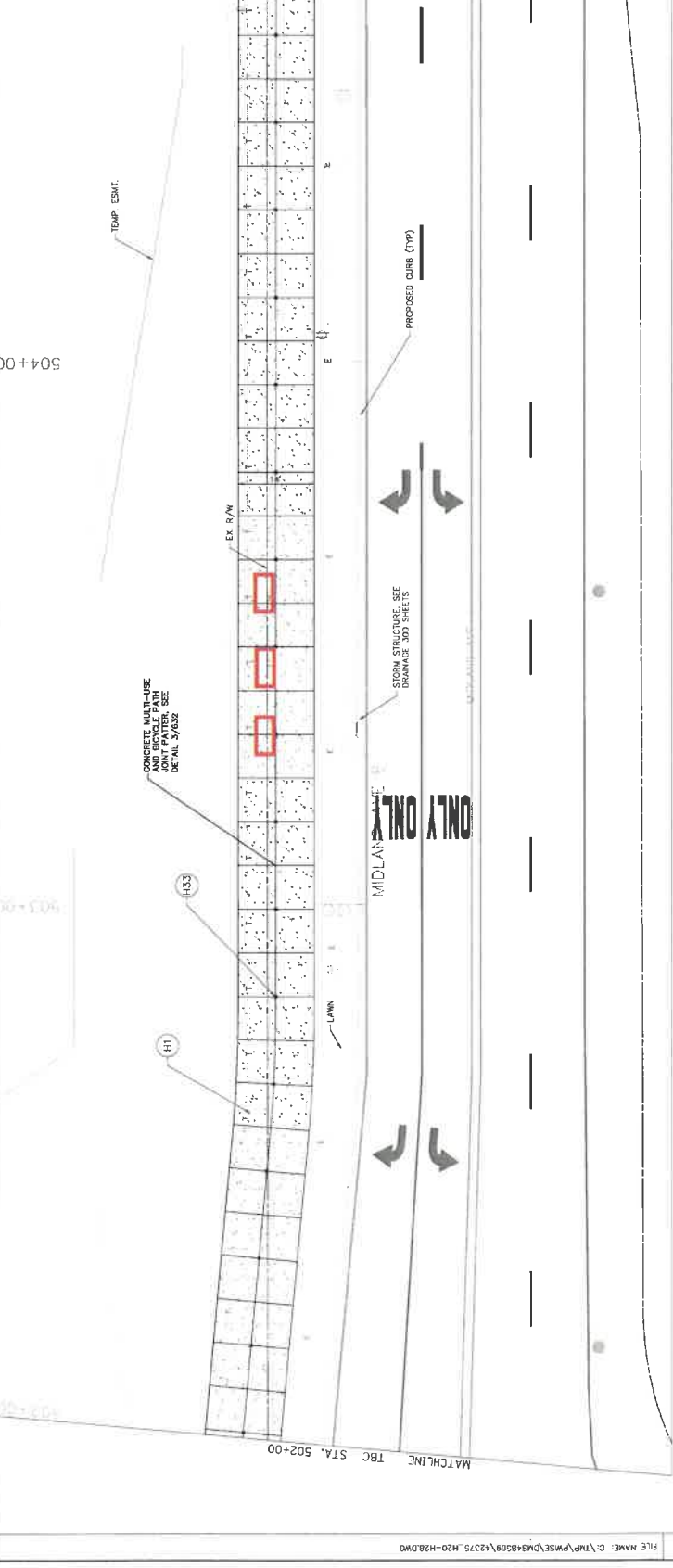
GENERAL NOTES

- ALL DIMENSIONS SHOWN ARE FOR CONSTRUCTION AND COORDINATION AND NOT FOR CONTRACT ASSOCIATION LIGHTING.
- CONCRETE MULTI-USE AND BICYCLE PATH JOINTS SHALL BE 3/8" DIA. 3/8" DIA. 3/8" DIA.

TRASH & RECYCLE RECEPTACLES (SPACED 2' APART, TYP.)

BIKE RACKS (SPACED 3' APART, TYP.)

FIXED TABLES (TO BE LOCATED IN THE FIELD)



GENERAL NOTES

- ALL DIMENSIONS SHOWN ARE INDICATED.
- CONCRETE SHEETS BY CONNECTION AND INSTALLATION AND CONCRETE ASSOCIATED WITH LIGHTING.

LEGEND

(H1)	CONCRETE RESORBAM PAVEMENT W/ MULTI-USE PATH (SEE DETAIL 1, SHEET 630)	(H23)	CRUSHED STONE EDGING W/ BINDER (SEE DETAIL 4, SHEET 631)	(H35)	KURST STREAMBED (SEE DETAIL 3, SHEET 6)
(H2)	CONCRETE BICYCLE PATH (SEE DETAIL 3, SHEET 630)	(H24)	PRECAST BENCH ON TUBE FOOTER (SEE DETAIL 5, SHEET 635)	(H36)	KURST EQUIPMENT (SEE DETAIL 4, SHEET 6)
(H3)	TOWN BRANCH PAVEMENT BANDING (SEE DETAIL 2, SHEET 632 FOR SIGNATURE WALL, SHEET 634 FOR FLUSH CURB PAVEMENT)	(H25)	PRECAST WALL END PIECE-A (SEE DETAIL 3, SHEET 634)	(H37)	EDUCATIONAL SIGNAGE (SEE SHEET 650)
(H4)	FLUSH CURB PAVEMENT (SEE DETAIL 1, SHEET 632)	(H26)	PRECAST WALL END PIECE-B (SEE DETAIL 2, SHEET 635)		
(H5)	PRECAST BENCH AND FOOTER (SEE DETAIL 4, SHEET 635)	(H27)	PRECAST WALL INSERT (SEE DETAIL 4, SHEET 634)		
(H6)	SIGNATURE WALL (SEE DETAIL 1, SHEET 632)	(H28)	PRECAST TRANSITION INSERT (SEE DETAIL 1, SHEET 635)		
(H7)	SIGNATURE WALL W/O CAP (SEE DETAIL 1, SHEET 632)	(H29)	PRECAST 45° WALL INSERT (SEE DETAIL 1, SHEET 634)		
(H8)	TYPICAL WALL W/O CAP (SEE DETAIL 2, SHEET 630)	(H30)	WALL-LIGHT SYMBOL (SEE 400 FOR DETAIL INFO)		
(H9)	SIGNATURE PAVING ON SLAB (SEE DETAIL 1, SHEET 631)	(H31)	UP-LIGHT SYMBOL (SEE 400 FOR DETAIL INFO)		
(H10)	CRUSHED STONE PAVING W/ BINDER (SEE DETAIL 3, SHEET 631)	(H32)	4"x4" SQUARE TREE FRAME AT 50' CELLS (SEE DETAIL 3, SHEET 260)		
(H11)	WATER FEATURE (SEE DETAIL SHEETS 640 THRU 648)	(H33)	50' SQUARE TREE FRAME AT 50' CELLS (SEE DETAIL 3, SHEET 260)		
		(H34)	STREET NAME IN PAVING BAND (SEE DETAIL 1, SHEET 629)		
			NOT USED		
			NOT USED		
			SPLASH PAD (SEE DETAIL 3, SHEET 633)		
			UNIT BOLLARD (SEE DETAIL 2, SHEET 639)		
			TYPICAL WALL WITH CAP (SEE DETAIL 1, SHEET 634)		
			PERMEABLE SIGNATURE PAVING (SEE DETAIL 2, SHEET 637)		
			PROPOSED UTILITY POLES		
			VEHICULAR RATED BASE (SEE DETAILS 2 & 4, SHEET 630)		
			KURST CASCADE (SEE DETAIL 2, SHEETS 638)		
			DETECTABLE WARNING STRIP		
			NOT USED		

LEGEND

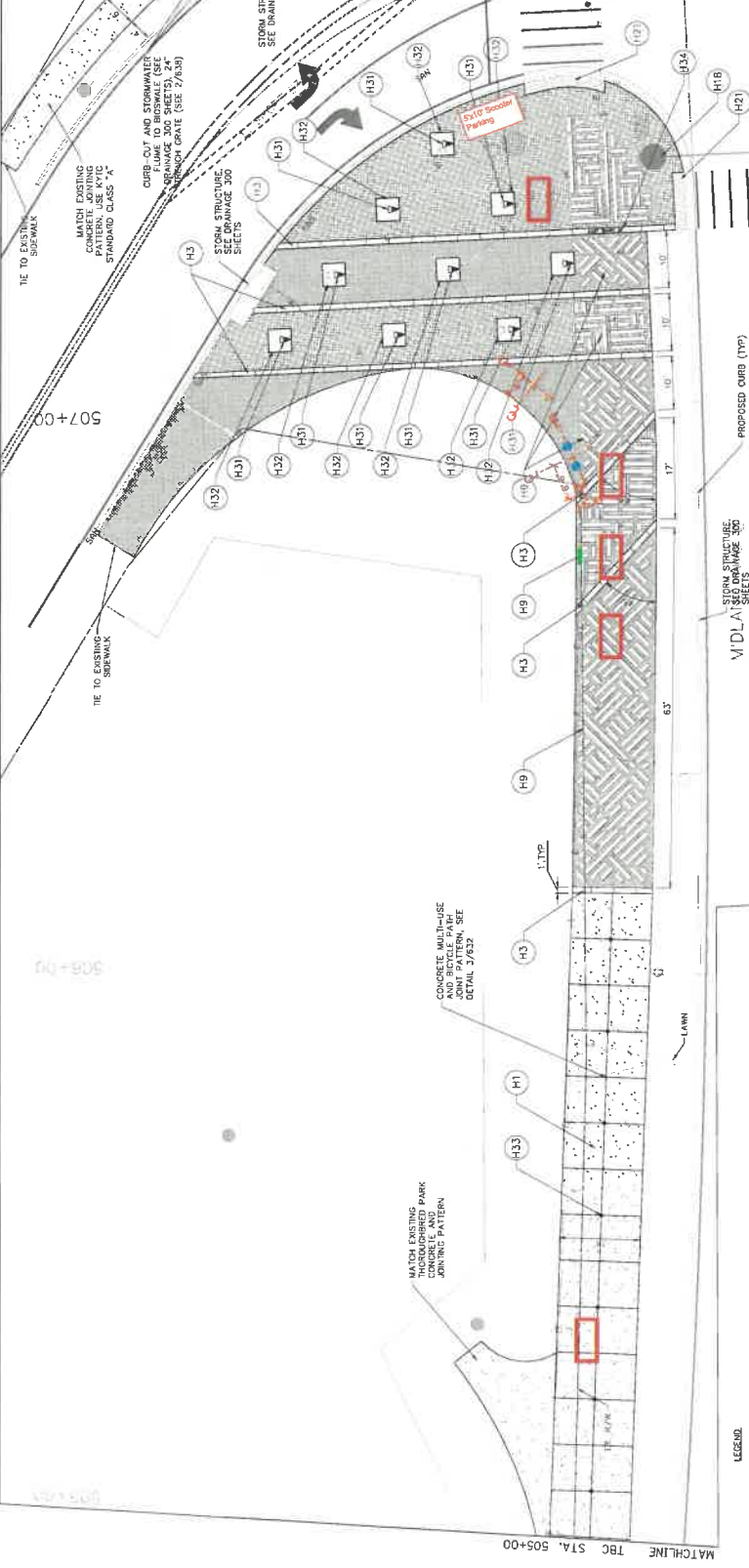
- TRASH & RECYCLE RECEPTACLES (SPACED 2' APART, TYP.)
- BIKE RACKS (SPACED 3' APART, TYP.)
- FIXED TABLES (TO BE LOCATED IN THE FIELD)

GENERAL NOTES

- ALL DIMENSIONS SHOWN ARE INDICATED.
- CONCRETE SHEETS BY CONNECTION AND INSTALLATION AND CONCRETE ASSOCIATED WITH LIGHTING.

STORM STRUCTURE DRAINAGE 300 SHEETS
 PROPOSED CURB (TYP.)
 EX. R/W
 TEMP. ESMT.
 MATCHLINE TBC STA. 502+00
 MATCHLINE TBC STA. 505+00

DATE PLOTTED: June 24, 2019
 USER: Henry
 FILE NAME: C:\np\p\m\se\pms\8508\42375_M20-H28.DWG



LEGEND

- H1 - CONCRETE PEGS
- H2 - CONCRETE BRICK PAVING (SEE DETAIL 1, SHEET 630)
- H3 - CONCRETE BRICK PAVING (SEE DETAIL 2, SHEET 631)
- H4 - CONCRETE BRICK PAVING (SEE DETAIL 3, SHEET 632)
- H5 - CONCRETE BRICK PAVING (SEE DETAIL 4, SHEET 633)
- H6 - CONCRETE BRICK PAVING (SEE DETAIL 5, SHEET 634)
- H7 - CONCRETE BRICK PAVING (SEE DETAIL 6, SHEET 635)
- H8 - CONCRETE BRICK PAVING (SEE DETAIL 7, SHEET 636)
- H9 - CONCRETE BRICK PAVING (SEE DETAIL 8, SHEET 637)
- H10 - CONCRETE BRICK PAVING (SEE DETAIL 9, SHEET 638)
- H11 - CONCRETE BRICK PAVING (SEE DETAIL 10, SHEET 639)
- H12 - CONCRETE BRICK PAVING (SEE DETAIL 11, SHEET 640)
- H13 - CONCRETE BRICK PAVING (SEE DETAIL 12, SHEET 641)
- H14 - CONCRETE BRICK PAVING (SEE DETAIL 13, SHEET 642)
- H15 - CONCRETE BRICK PAVING (SEE DETAIL 14, SHEET 643)
- H16 - CONCRETE BRICK PAVING (SEE DETAIL 15, SHEET 644)
- H17 - CONCRETE BRICK PAVING (SEE DETAIL 16, SHEET 645)
- H18 - CONCRETE BRICK PAVING (SEE DETAIL 17, SHEET 646)
- H19 - CONCRETE BRICK PAVING (SEE DETAIL 18, SHEET 647)
- H20 - CONCRETE BRICK PAVING (SEE DETAIL 19, SHEET 648)
- H21 - CONCRETE BRICK PAVING (SEE DETAIL 20, SHEET 649)
- H22 - CONCRETE BRICK PAVING (SEE DETAIL 21, SHEET 650)

GENERAL NOTES

- ALL DIMENSIONS SHOWN ARE UNLESS OTHERWISE INDICATED.
- SEE ELECTRIC SHEETS FOR COORDINATION AND INSULATION REQUIREMENTS. SEE JUNCTION BOXES (JB) FOR LIGHTING.

LEGEND

- TRASH & RECYCLE RECEPTACLES (SPACED 2' APART, TYP.)
- BIKE RACKS (SPACED 3' APART, TYP.)
- FIXED TABLES (TO BE LOCATED IN THE FIELD)

CONCRETE PEGS (SEE DETAIL 1, SHEET 630)

CONCRETE BRICK PAVING (SEE DETAIL 2, SHEET 631)

CONCRETE BRICK PAVING (SEE DETAIL 3, SHEET 632)

CONCRETE BRICK PAVING (SEE DETAIL 4, SHEET 633)

CONCRETE BRICK PAVING (SEE DETAIL 5, SHEET 634)

CONCRETE BRICK PAVING (SEE DETAIL 6, SHEET 635)

CONCRETE BRICK PAVING (SEE DETAIL 7, SHEET 636)

CONCRETE BRICK PAVING (SEE DETAIL 8, SHEET 637)

CONCRETE BRICK PAVING (SEE DETAIL 9, SHEET 638)

CONCRETE BRICK PAVING (SEE DETAIL 10, SHEET 639)

CONCRETE BRICK PAVING (SEE DETAIL 11, SHEET 640)

CONCRETE BRICK PAVING (SEE DETAIL 12, SHEET 641)

CONCRETE BRICK PAVING (SEE DETAIL 13, SHEET 642)

CONCRETE BRICK PAVING (SEE DETAIL 14, SHEET 643)

CONCRETE BRICK PAVING (SEE DETAIL 15, SHEET 644)

CONCRETE BRICK PAVING (SEE DETAIL 16, SHEET 645)

CONCRETE BRICK PAVING (SEE DETAIL 17, SHEET 646)

CONCRETE BRICK PAVING (SEE DETAIL 18, SHEET 647)

CONCRETE BRICK PAVING (SEE DETAIL 19, SHEET 648)

CONCRETE BRICK PAVING (SEE DETAIL 20, SHEET 649)

CONCRETE BRICK PAVING (SEE DETAIL 21, SHEET 650)

CRUSHED STONE EDGING W/ BINDER (SEE DETAIL 1, SHEET 630)

PRECAST REINCH ON TUBE FOOTER (SEE DETAIL 2, SHEET 631)

PRECAST WALL END PRE-CAST (SEE DETAIL 3, SHEET 632)

PRECAST WALL END PRE-CAST (SEE DETAIL 4, SHEET 633)

PRECAST WALL END PRE-CAST (SEE DETAIL 5, SHEET 634)

PRECAST WALL END PRE-CAST (SEE DETAIL 6, SHEET 635)

PRECAST WALL END PRE-CAST (SEE DETAIL 7, SHEET 636)

PRECAST WALL END PRE-CAST (SEE DETAIL 8, SHEET 637)

PRECAST WALL END PRE-CAST (SEE DETAIL 9, SHEET 638)

PRECAST WALL END PRE-CAST (SEE DETAIL 10, SHEET 639)

PRECAST WALL END PRE-CAST (SEE DETAIL 11, SHEET 640)

PRECAST WALL END PRE-CAST (SEE DETAIL 12, SHEET 641)

PRECAST WALL END PRE-CAST (SEE DETAIL 13, SHEET 642)

PRECAST WALL END PRE-CAST (SEE DETAIL 14, SHEET 643)

PRECAST WALL END PRE-CAST (SEE DETAIL 15, SHEET 644)

PRECAST WALL END PRE-CAST (SEE DETAIL 16, SHEET 645)

PRECAST WALL END PRE-CAST (SEE DETAIL 17, SHEET 646)

PRECAST WALL END PRE-CAST (SEE DETAIL 18, SHEET 647)

PRECAST WALL END PRE-CAST (SEE DETAIL 19, SHEET 648)

PRECAST WALL END PRE-CAST (SEE DETAIL 20, SHEET 649)

PRECAST WALL END PRE-CAST (SEE DETAIL 21, SHEET 650)

CRUSHED STONE EDGING W/ BINDER (SEE DETAIL 1, SHEET 630)

PRECAST REINCH ON TUBE FOOTER (SEE DETAIL 2, SHEET 631)

PRECAST WALL END PRE-CAST (SEE DETAIL 3, SHEET 632)

PRECAST WALL END PRE-CAST (SEE DETAIL 4, SHEET 633)

PRECAST WALL END PRE-CAST (SEE DETAIL 5, SHEET 634)

PRECAST WALL END PRE-CAST (SEE DETAIL 6, SHEET 635)

PRECAST WALL END PRE-CAST (SEE DETAIL 7, SHEET 636)

PRECAST WALL END PRE-CAST (SEE DETAIL 8, SHEET 637)

PRECAST WALL END PRE-CAST (SEE DETAIL 9, SHEET 638)

PRECAST WALL END PRE-CAST (SEE DETAIL 10, SHEET 639)

PRECAST WALL END PRE-CAST (SEE DETAIL 11, SHEET 640)

PRECAST WALL END PRE-CAST (SEE DETAIL 12, SHEET 641)

PRECAST WALL END PRE-CAST (SEE DETAIL 13, SHEET 642)

PRECAST WALL END PRE-CAST (SEE DETAIL 14, SHEET 643)

PRECAST WALL END PRE-CAST (SEE DETAIL 15, SHEET 644)

PRECAST WALL END PRE-CAST (SEE DETAIL 16, SHEET 645)

PRECAST WALL END PRE-CAST (SEE DETAIL 17, SHEET 646)

PRECAST WALL END PRE-CAST (SEE DETAIL 18, SHEET 647)

PRECAST WALL END PRE-CAST (SEE DETAIL 19, SHEET 648)

PRECAST WALL END PRE-CAST (SEE DETAIL 20, SHEET 649)

PRECAST WALL END PRE-CAST (SEE DETAIL 21, SHEET 650)

CRUSHED STONE EDGING W/ BINDER (SEE DETAIL 1, SHEET 630)

PRECAST REINCH ON TUBE FOOTER (SEE DETAIL 2, SHEET 631)

PRECAST WALL END PRE-CAST (SEE DETAIL 3, SHEET 632)

PRECAST WALL END PRE-CAST (SEE DETAIL 4, SHEET 633)

PRECAST WALL END PRE-CAST (SEE DETAIL 5, SHEET 634)

PRECAST WALL END PRE-CAST (SEE DETAIL 6, SHEET 635)

PRECAST WALL END PRE-CAST (SEE DETAIL 7, SHEET 636)

PRECAST WALL END PRE-CAST (SEE DETAIL 8, SHEET 637)

PRECAST WALL END PRE-CAST (SEE DETAIL 9, SHEET 638)

PRECAST WALL END PRE-CAST (SEE DETAIL 10, SHEET 639)

PRECAST WALL END PRE-CAST (SEE DETAIL 11, SHEET 640)

PRECAST WALL END PRE-CAST (SEE DETAIL 12, SHEET 641)

PRECAST WALL END PRE-CAST (SEE DETAIL 13, SHEET 642)

PRECAST WALL END PRE-CAST (SEE DETAIL 14, SHEET 643)

PRECAST WALL END PRE-CAST (SEE DETAIL 15, SHEET 644)

PRECAST WALL END PRE-CAST (SEE DETAIL 16, SHEET 645)

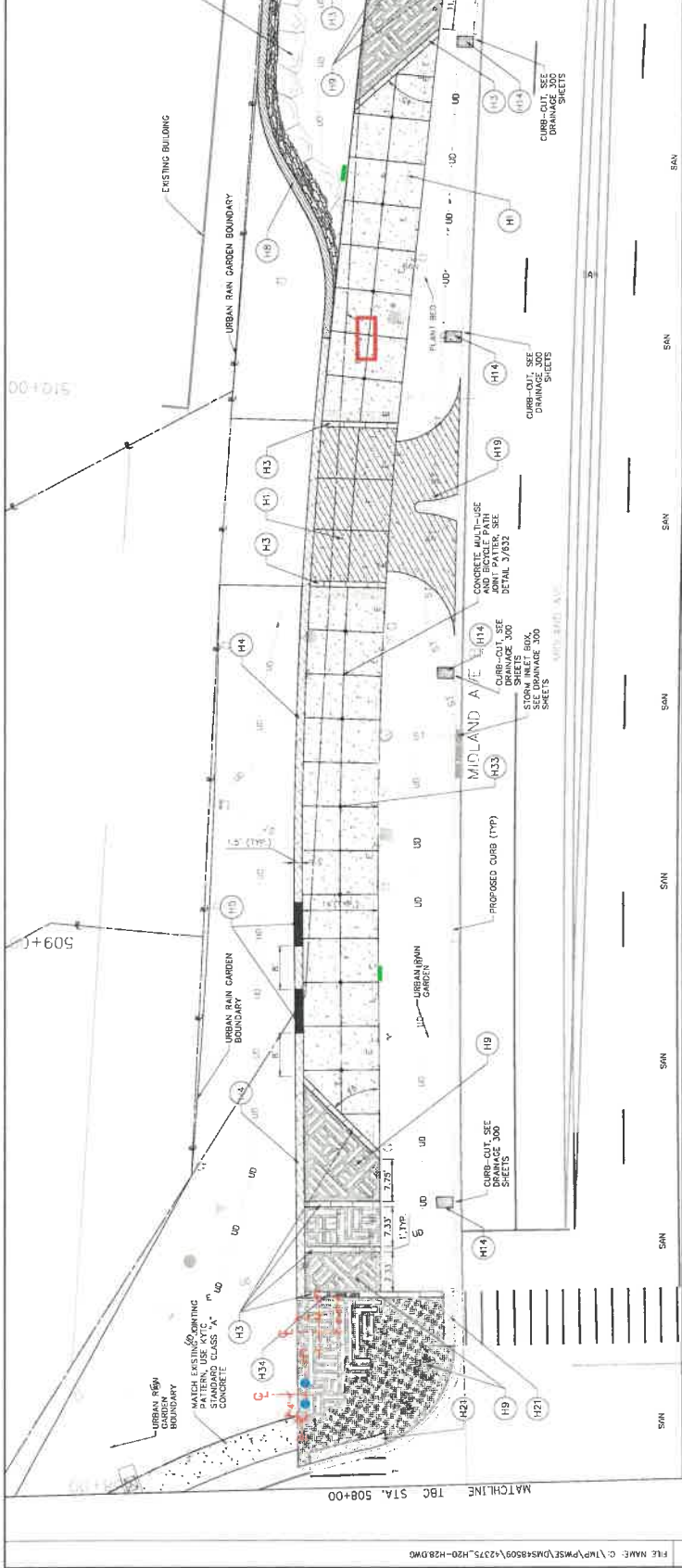
PRECAST WALL END PRE-CAST (SEE DETAIL 17, SHEET 646)

PRECAST WALL END PRE-CAST (SEE DETAIL 18, SHEET 647)

PRECAST WALL END PRE-CAST (SEE DETAIL 19, SHEET 648)

PRECAST WALL END PRE-CAST (SEE DETAIL 20, SHEET 649)

PRECAST WALL END PRE-CAST (SEE DETAIL 21, SHEET 650)



LEGEND

- TRASH & RECYCLE RECEPTACLES (SPACED 2' APART, TYP.)
- BIKE RACKS (SPACED 3' APART, TYP.)
- FIXED TABLES (TO BE LOCATED IN THE FIELD)

GENERAL NOTES

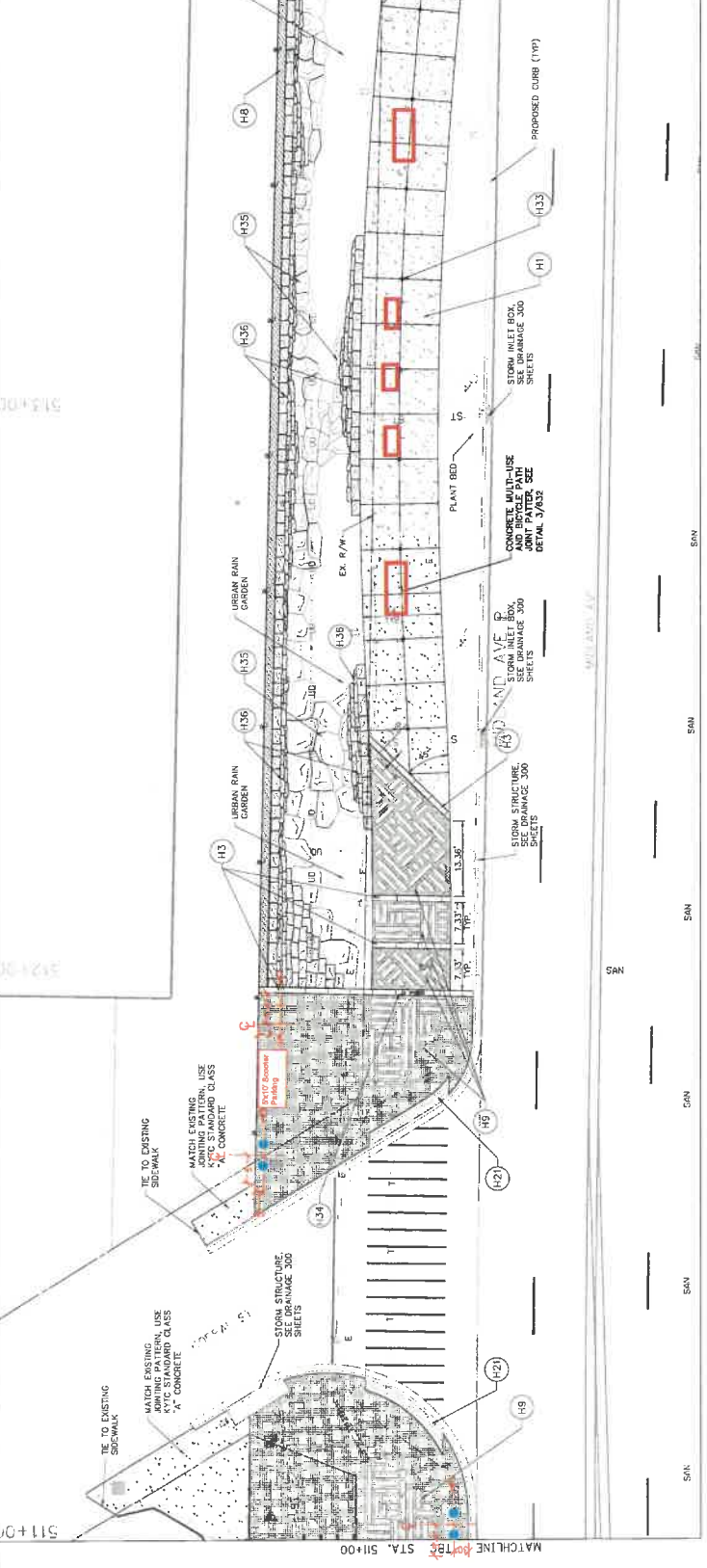
- ALL DIMENSIONS SHOWN ARE AS SHOWN UNLESS INDICATED OTHERWISE.
- SEE ELECTRIC SHEET FOR ALL ELECTRICAL SYMBOLS AND CONNECTIONS.
- SEE CIVIL SHEET FOR ALL CIVIL SYMBOLS AND CONNECTIONS.
- SEE MECHANICAL SHEET FOR ALL MECHANICAL SYMBOLS AND CONNECTIONS.
- SEE PLUMBING SHEET FOR ALL PLUMBING SYMBOLS AND CONNECTIONS.
- SEE SANITATION SHEET FOR ALL SANITATION SYMBOLS AND CONNECTIONS.
- SEE STRUCTURAL SHEET FOR ALL STRUCTURAL SYMBOLS AND CONNECTIONS.
- SEE FOUNDATION SHEET FOR ALL FOUNDATION SYMBOLS AND CONNECTIONS.
- SEE ROOFING SHEET FOR ALL ROOFING SYMBOLS AND CONNECTIONS.
- SEE EXTERIOR FINISHES SHEET FOR ALL EXTERIOR FINISHES SYMBOLS AND CONNECTIONS.
- SEE INTERIOR FINISHES SHEET FOR ALL INTERIOR FINISHES SYMBOLS AND CONNECTIONS.
- SEE MECHANICAL EQUIPMENT SHEET FOR ALL MECHANICAL EQUIPMENT SYMBOLS AND CONNECTIONS.
- SEE ELECTRICAL EQUIPMENT SHEET FOR ALL ELECTRICAL EQUIPMENT SYMBOLS AND CONNECTIONS.
- SEE CIVIL EQUIPMENT SHEET FOR ALL CIVIL EQUIPMENT SYMBOLS AND CONNECTIONS.
- SEE MECHANICAL EQUIPMENT SHEET FOR ALL MECHANICAL EQUIPMENT SYMBOLS AND CONNECTIONS.
- SEE ELECTRICAL EQUIPMENT SHEET FOR ALL ELECTRICAL EQUIPMENT SYMBOLS AND CONNECTIONS.
- SEE CIVIL EQUIPMENT SHEET FOR ALL CIVIL EQUIPMENT SYMBOLS AND CONNECTIONS.

Scale: 0' 20' 40'

Gresham Smith
 LEXINGTON

HARDSCAPE PLAN
 TOWN BRANCH COMMONS
 STA. 508+00 TO STA. 511+00

Symbol	Description	Symbol	Description
(H1)	CONCRETE PAVEMENT (SEE DETAIL 1, SHEET 630)	(H23)	CRUSHED STONE EDGING W/ BRIDGES (SEE DETAIL 3, SHEET 631)
(H2)	CONCRETE BIKE PATH (SEE DETAIL 3, SHEET 633)	(H24)	PRECAST BENCH ON TUBE (SEE DETAIL 4, SHEET 632)
(H3)	TOWN BRANCH PAVEMENT (SEE DETAIL 2, SHEET 632 FOR SIGNATURE PAVING, SEE DETAIL 3, SHEET 633 FOR FLUSH CURB PAVEMENT)	(H25)	PRECAST WALL END PIECE-A (SEE DETAIL 3, SHEET 634)
(H4)	FLUSH CURB PAVEMENT (SEE DETAIL 1, SHEET 633)	(H26)	PRECAST WALL INSERT (SEE DETAIL 2, SHEET 635)
(H5)	PRECAST BENCH AND FOOTER (SEE DETAIL 4, SHEET 632)	(H27)	PRECAST TRANSITION INSERT (SEE DETAIL 1, SHEET 635)
(H6)	SIGNATURE WALL WITH CAP (SEE DETAIL 2, SHEET 633)	(H28)	PRECAST 45° WALL INSERT (SEE DETAIL 1, SHEET 636)
(H7)	SIGNATURE WALL W/O CAP (SEE DETAIL 1, SHEET 633)	(H29)	WALL-LIGHT SYMBOL (SEE 400 FOR DETAIL INFO)
(H8)	TYPICAL WALL (SEE DETAIL 2, SHEET 633)	(H30)	UP-LIGHT SYMBOL (SEE 400 FOR DETAIL INFO)
(H9)	SIGNATURE PAVING ON SLAB (SEE DETAIL 1, SHEET 631)	(H31)	4'-1" SQUARE TREE FRAME AT SOL CELLS (SEE DETAIL 3, SHEET 636)
(H10)	CRUSHED STONE PAVING W/ BINDER (SEE DETAIL 3, SHEET 631)	(H32)	8" DIAMETER LANE MARKER (SEE SHEET NAME IN BRANCH BAND SHEET (SEE DETAIL 1, SHEET 628))
(H11)	WALKWAY FEATURE (SEE DETAIL SHEETS 640 THRU 649)	(H33)	STREET TYPING
(H12)	NOT USED	(H34)	NOT USED



GENERAL NOTES

- ALL DIMENSIONS SHOWN ARE UNLESS OTHERWISE INDICATED.
- SEE ELECTRIC SHEET FOR LIGHTING FIXTURES AND CONNECTIONS TO THE MAIN ELECTRICAL PANEL.
- SEE CIVIL SHEET FOR CONSTRUCTION DETAILS AND MATERIALS.
- SEE MECHANICAL SHEET FOR HVAC SYSTEMS AND VENTILATION.
- SEE PLUMBING SHEET FOR SANITARY AND WATER SYSTEMS.
- SEE STRUCTURAL SHEET FOR FOUNDATION AND FLOOR SYSTEMS.
- SEE GEOTECHNICAL SHEET FOR SOIL CONDITIONS AND FOUNDATION RECOMMENDATIONS.
- SEE LANDSCAPE SHEET FOR PLANTING AND IRRIGATION SYSTEMS.
- SEE SIGNAGE SHEET FOR SIGNAGE AND GRAPHIC DESIGN.
- SEE UTILITIES SHEET FOR UNDERGROUND AND ABOVE-GROUND UTILITIES.
- SEE TRAFFIC ENGINEERING SHEET FOR TRAFFIC CONTROL AND SIGNALS.
- SEE ENVIRONMENTAL SHEET FOR EROSION CONTROL AND WATER MANAGEMENT.
- SEE ACCESSIBILITY SHEET FOR ADA COMPLIANCE.
- SEE SAFETY SHEET FOR FIRE PROTECTION AND EMERGENCY EVACUATION ROUTES.
- SEE SECURITY SHEET FOR SECURITY SYSTEMS AND ACCESS CONTROL.
- SEE SUSTAINABILITY SHEET FOR GREEN BUILDING STRATEGIES.
- SEE QUALITY ASSURANCE SHEET FOR CONSTRUCTION AND MATERIALS TESTING.
- SEE COMMUNITY ENGAGEMENT SHEET FOR PUBLIC PARTICIPATION AND FEEDBACK.
- SEE LEGAL SHEET FOR EASEMENTS AND PROPERTY LINES.
- SEE RECORD SHEET FOR AS-BUILT CONDITIONS.

LEGEND

- H1 CONCRETE PEDESTRIAN (SEE DETAIL 1, SHEET 630)
- H2 CONCRETE BICYCLE PATH (SEE DETAIL 3, SHEET 633)
- H3 TOWN BRANCH PAVEMENT (SEE DETAIL 2, SHEET 632)
- H4 FLUSH CURB PAVEMENT (SEE DETAIL 1, SHEET 631)
- H5 PRECAST BENCH AND FOOTER (SEE DETAIL 4, SHEET 635)
- H6 SIGNATURE WALL WITH CAP (SEE DETAIL 1, SHEET 634)
- H7 SIGNATURE WALL W/O CAP (SEE DETAIL 1, SHEET 634)
- H8 TYPICAL WALL W/O CAP (SEE DETAIL 2, SHEET 634)
- H9 SIGNATURE PAVING ON SLAB (SEE DETAIL 1, SHEET 631)
- H10 CRUSHED STONE PAVING W/ BINDER (SEE DETAIL 3, SHEET 633)
- H11 WATER FEATURE (SEE DETAIL SHEETS 640 THRU 649)

LEGEND

- H12 NOT USED
- H13 NOT USED
- H14 SPLASH PAD (SEE DETAIL 3, SHEET 633)
- H15 UNIT DOLLARD (SEE DETAIL 2, SHEET 632)
- H16 TYPICAL WALL WITH CAP (SEE DETAIL 1, SHEET 634)
- H17 PERMEABLE SIGNATURE PAVING (SEE DETAIL 2, SHEET 631)
- H18 PROPOSED UTILITY POLES
- H19 VEHICULAR RATED BASE (SEE DETAILS 2 & 4, SHEET 630)
- H20 KARST CASCADE (SEE DETAIL 2, SHEET 636)
- H21 DETECTABLE WARNING STRIP (SEE DETAIL 3, SHEET 631)
- H22 NOT USED

LEGEND

- H23 CRUSHED STONE EDGING W/ BINDER (SEE DETAIL 4, SHEET 631)
- H24 PRECAST BENCH ON TUBE (SEE DETAIL 5, SHEET 635)
- H25 PRECAST WALL END PIECE-A (SEE DETAIL 3, SHEET 634)
- H26 PRECAST WALL END PIECE-B (SEE DETAIL 2, SHEET 635)
- H27 PRECAST WALL INSERT (SEE DETAIL 4, SHEET 634)
- H28 PRECAST TRANSITION INSERT (SEE DETAIL 1, SHEET 635)
- H29 PRECAST 45° WALL INSERT (SEE DETAIL 1, SHEET 636)
- H30 WALL-LIGHT SYMBOL (SEE 489 SHEETS FOR DETAIL INFO)
- H31 UP-LIGHT SYMBOL (SEE 400 SHEETS FOR DETAIL INFO)
- H32 4" X 4" SQUARE TREE FRAME AT SOL CELLS (SEE DETAIL 3, SHEET 600)
- H33 8" DIAMETER LANE MARKER (SEE PAVEMENT SCHEDULES)
- H34 STREET NAME IN PAVING BAND (SEE DETAIL 1, SHEET 628)

LEGEND

- H35 KARST STREAMBED (SEE DETAIL 3, SHEET 6)
- H36 KARST EMBANKMENT (SEE DETAIL 4, SHEET 6)
- H37 EDUCATIONAL SIGNAGE (SEE SHEET 830)
- H38 L1, MIDLAND AVE. STA. 514+00 TO 514+20 CONST. 108 S.Y. KARST EMBANKMENT (SEE DETAIL SHEETS 640 THRU 649)
- H39 L1, MIDLAND AVE. STA. 514+00 TO 514+20 CONST. 108 S.Y. KARST EMBANKMENT (SEE DETAIL SHEETS 640 THRU 649)
- H40 L1, MIDLAND AVE. STA. 514+00 TO 514+20 CONST. 108 S.Y. KARST EMBANKMENT (SEE DETAIL SHEETS 640 THRU 649)
- H41 L1, MIDLAND AVE. STA. 514+00 TO 514+20 CONST. 108 S.Y. KARST EMBANKMENT (SEE DETAIL SHEETS 640 THRU 649)

LEGEND

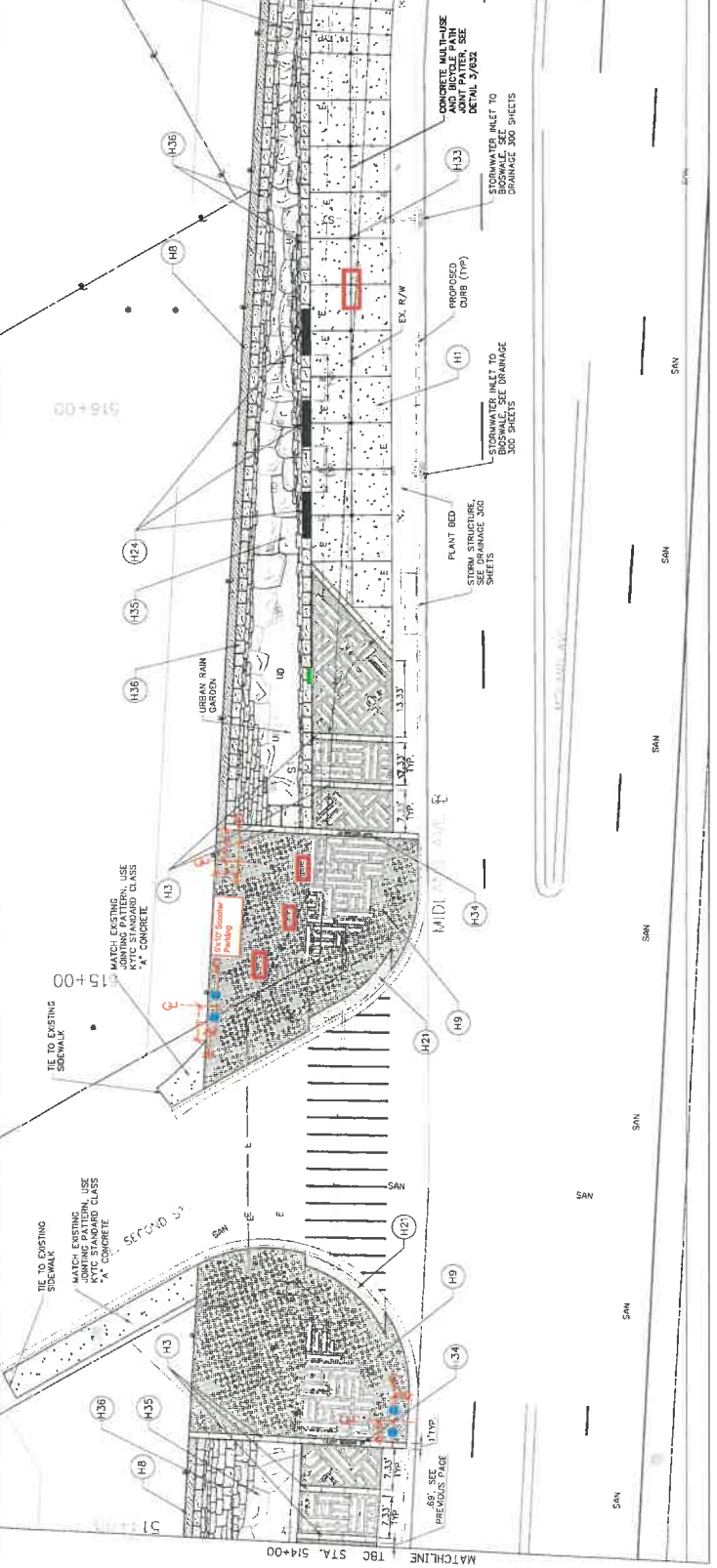
- H42 GENERAL NOTES
- H43 ALL DIMENSIONS SHOWN ARE UNLESS OTHERWISE INDICATED.
- H44 SEE ELECTRIC SHEET FOR LIGHTING FIXTURES AND CONNECTIONS TO THE MAIN ELECTRICAL PANEL.
- H45 SEE CIVIL SHEET FOR CONSTRUCTION DETAILS AND MATERIALS.
- H46 SEE MECHANICAL SHEET FOR HVAC SYSTEMS AND VENTILATION.
- H47 SEE PLUMBING SHEET FOR SANITARY AND WATER SYSTEMS.
- H48 SEE STRUCTURAL SHEET FOR FOUNDATION AND FLOOR SYSTEMS.
- H49 SEE GEOTECHNICAL SHEET FOR SOIL CONDITIONS AND FOUNDATION RECOMMENDATIONS.
- H50 SEE LANDSCAPE SHEET FOR PLANTING AND IRRIGATION SYSTEMS.
- H51 SEE SIGNAGE SHEET FOR SIGNAGE AND GRAPHIC DESIGN.
- H52 SEE UTILITIES SHEET FOR UNDERGROUND AND ABOVE-GROUND UTILITIES.
- H53 SEE TRAFFIC ENGINEERING SHEET FOR TRAFFIC CONTROL AND SIGNALS.
- H54 SEE ENVIRONMENTAL SHEET FOR EROSION CONTROL AND WATER MANAGEMENT.
- H55 SEE ACCESSIBILITY SHEET FOR ADA COMPLIANCE.
- H56 SEE SAFETY SHEET FOR FIRE PROTECTION AND EMERGENCY EVACUATION ROUTES.
- H57 SEE SECURITY SHEET FOR SECURITY SYSTEMS AND ACCESS CONTROL.
- H58 SEE SUSTAINABILITY SHEET FOR GREEN BUILDING STRATEGIES.
- H59 SEE QUALITY ASSURANCE SHEET FOR CONSTRUCTION AND MATERIALS TESTING.
- H60 SEE COMMUNITY ENGAGEMENT SHEET FOR PUBLIC PARTICIPATION AND FEEDBACK.
- H61 SEE LEGAL SHEET FOR EASEMENTS AND PROPERTY LINES.
- H62 SEE RECORD SHEET FOR AS-BUILT CONDITIONS.

LEGEND

- H63 L1, MIDLAND AVE. STA. 514+97 TO 514+00 CONST. 233 S.Y. CONCRETE MULTI-USE PARK (SEE DETAIL 3, SHEET 633)
- H64 L1, MIDLAND AVE. STA. 514+97 TO 514+00 CONST. 233 S.Y. CONCRETE MULTI-USE PARK (SEE DETAIL 3, SHEET 633)
- H65 L1, MIDLAND AVE. STA. 514+97 TO 514+00 CONST. 233 S.Y. CONCRETE MULTI-USE PARK (SEE DETAIL 3, SHEET 633)
- H66 L1, MIDLAND AVE. STA. 514+97 TO 514+00 CONST. 233 S.Y. CONCRETE MULTI-USE PARK (SEE DETAIL 3, SHEET 633)
- H67 L1, MIDLAND AVE. STA. 514+97 TO 514+00 CONST. 233 S.Y. CONCRETE MULTI-USE PARK (SEE DETAIL 3, SHEET 633)
- H68 L1, MIDLAND AVE. STA. 514+97 TO 514+00 CONST. 233 S.Y. CONCRETE MULTI-USE PARK (SEE DETAIL 3, SHEET 633)
- H69 L1, MIDLAND AVE. STA. 514+97 TO 514+00 CONST. 233 S.Y. CONCRETE MULTI-USE PARK (SEE DETAIL 3, SHEET 633)
- H70 L1, MIDLAND AVE. STA. 514+97 TO 514+00 CONST. 233 S.Y. CONCRETE MULTI-USE PARK (SEE DETAIL 3, SHEET 633)
- H71 L1, MIDLAND AVE. STA. 514+97 TO 514+00 CONST. 233 S.Y. CONCRETE MULTI-USE PARK (SEE DETAIL 3, SHEET 633)
- H72 L1, MIDLAND AVE. STA. 514+97 TO 514+00 CONST. 233 S.Y. CONCRETE MULTI-USE PARK (SEE DETAIL 3, SHEET 633)

LEGEND

- H73 L1, MIDLAND AVE. STA. 514+97 TO 514+00 CONST. 233 S.Y. CONCRETE MULTI-USE PARK (SEE DETAIL 3, SHEET 633)
- H74 L1, MIDLAND AVE. STA. 514+97 TO 514+00 CONST. 233 S.Y. CONCRETE MULTI-USE PARK (SEE DETAIL 3, SHEET 633)
- H75 L1, MIDLAND AVE. STA. 514+97 TO 514+00 CONST. 233 S.Y. CONCRETE MULTI-USE PARK (SEE DETAIL 3, SHEET 633)
- H76 L1, MIDLAND AVE. STA. 514+97 TO 514+00 CONST. 233 S.Y. CONCRETE MULTI-USE PARK (SEE DETAIL 3, SHEET 633)
- H77 L1, MIDLAND AVE. STA. 514+97 TO 514+00 CONST. 233 S.Y. CONCRETE MULTI-USE PARK (SEE DETAIL 3, SHEET 633)
- H78 L1, MIDLAND AVE. STA. 514+97 TO 514+00 CONST. 233 S.Y. CONCRETE MULTI-USE PARK (SEE DETAIL 3, SHEET 633)
- H79 L1, MIDLAND AVE. STA. 514+97 TO 514+00 CONST. 233 S.Y. CONCRETE MULTI-USE PARK (SEE DETAIL 3, SHEET 633)
- H80 L1, MIDLAND AVE. STA. 514+97 TO 514+00 CONST. 233 S.Y. CONCRETE MULTI-USE PARK (SEE DETAIL 3, SHEET 633)
- H81 L1, MIDLAND AVE. STA. 514+97 TO 514+00 CONST. 233 S.Y. CONCRETE MULTI-USE PARK (SEE DETAIL 3, SHEET 633)
- H82 L1, MIDLAND AVE. STA. 514+97 TO 514+00 CONST. 233 S.Y. CONCRETE MULTI-USE PARK (SEE DETAIL 3, SHEET 633)



DATE: 11/10/2017 11:24 AM
USER: herry

FILE NAME: C:\IP\PMSE\DM548509\4375_H120-H128.DWG

LEGEND

- CONCRETE PEDESTRIAN (SEE DETAIL 1, SHEET 630)
- CONCRETE BIKE PATH (SEE DETAIL 3, SHEET 630)
- TOWN BRANCH PAVEMENT BANDING (SEE DETAIL 2, SHEET 632 FOR ADDITIONAL PAVEMENTS, SEE DETAIL 3)
- FLUSH CURB PAVEMENT (SEE DETAIL 1, SHEET 632)
- PRECAST BENCH AND FOOTER (SEE DETAIL 4, SHEET 635)
- SINKHOLE WALL (SEE SHEET 634)
- TYPICAL WALL W/O CAP (SEE DETAIL 1, SHEET 633)
- PERMEABLE SIGNATURE PAVING (SEE DETAIL 2, SHEET 631)
- PROPOSED UTILITY POLES
- VEHICULAR RATED BASE (SEE DETAILS 2 & 4, SHEET 630)
- KARST CASCADE (SEE DETAIL 2, SHEET 635)
- CHUSHED STONE PAVING W/ BINDER (SEE DETAIL 3, SHEET 631)
- WATER FEATURE (SEE DETAIL SHEETS 640 THRU 649)

LEGEND

- CRUSHED STONE EDGING W/ BINDER (SEE DETAIL 4, SHEET 631)
- PRECAST BENCH ON TUBE (SEE DETAIL 5, SHEET 635)
- PRECAST WALL END PIECE-A (SEE DETAIL 3, SHEET 634)
- PRECAST WALL INSERT (SEE DETAIL 4, SHEET 634)
- PRECAST TRANSITION INSERT (SEE DETAIL 1, SHEET 635)
- PRECAST '45' WALL INSERT (SEE DETAIL 1, SHEET 635)
- WALL-LIGHT SYMBOL (SEE 400 FOR DETAIL INFO)
- UP-LIGHT SYMBOL (SEE 400 FOR DETAIL INFO)
- 4'-4" SQUARE TREE FRAME AT SOIL COLLARS (SEE DETAIL 3, SHEET 630)
- DIAMETER LANE MARKER (SEE DETAIL 1, SHEET 639)
- STREET NAME IN BANKING BAND (SEE DETAIL 1, SHEET 639)
- NOT USED

LEGEND

- KARST STREAMBED (SEE DETAIL 3, SHEET 6)
- KARST CURBANKIERT (SEE DETAIL 4, SHEET 6)
- EDUCATIONAL SIGNAGE (SEE SHEET 630)
- LT. MIDLAND AVE. STA. 514+00 TO 514+51 CONST. 14" S.V. SIGNATURE PAVING ON SLAB
- LT. MIDLAND AVE. STA. 514+00 TO 514+17 CONST. 18" S.V. KARST CURBANKIERT
- LT. MIDLAND AVE. STA. 514+00 TO 514+17 CONST. 10" S.V. KARST STREAMBED
- LT. MIDLAND AVE. STA. 514+01 TO 514+17 CONST. 7" L.F. TOWN BRANCH PAVEMENT BANDING
- LT. MIDLAND AVE. STA. 514+17 TO 514+18 CONST. 7" L.F. STREET NAME PAVEMENT
- LT. MIDLAND AVE. STA. 514+23 TO 514+92 CONST. 5" S.V. CONCRETE MULTI-USE PATH
- LT. MIDLAND AVE. STA. 514+26 TO 514+54 CONST. 1" EA. PRECAST BENCH ON TUBE FOOTER

LEGEND

- GENERAL NOTES
- 1. ALL DIMENSIONS SHOWN ON CURB BUILDING SHEETS INDICATED.
- 2. SEE ELECTRIC SHEET FOR PROJECTION LIGHT JUNCTION BOXES (SEE SHEET 630) AND ASSOCIATED LIGHTING.
- 3. SEE DETAIL 3, SHEET 630 FOR KARST STREAMBED.
- 4. SEE DETAIL 4, SHEET 630 FOR KARST CURBANKIERT.
- 5. SEE DETAIL 1, SHEET 635 FOR PRECAST BENCH AND FOOTER.
- 6. SEE DETAIL 1, SHEET 635 FOR PRECAST WALL INSERT.
- 7. SEE DETAIL 1, SHEET 635 FOR PRECAST TRANSITION INSERT.
- 8. SEE DETAIL 1, SHEET 635 FOR PRECAST '45' WALL INSERT.
- 9. SEE DETAIL 1, SHEET 635 FOR WALL-LIGHT SYMBOL.
- 10. SEE DETAIL 1, SHEET 635 FOR UP-LIGHT SYMBOL.
- 11. SEE DETAIL 3, SHEET 630 FOR 4'-4" SQUARE TREE FRAME AT SOIL COLLARS.
- 12. SEE DETAIL 1, SHEET 639 FOR DIAMETER LANE MARKER.
- 13. SEE DETAIL 1, SHEET 639 FOR STREET NAME IN BANKING BAND.
- 14. SEE DETAIL 3, SHEET 631 FOR CHUSHED STONE PAVING W/ BINDER.
- 15. SEE DETAIL SHEETS 640 THRU 649 FOR WATER FEATURE.

LEGEND

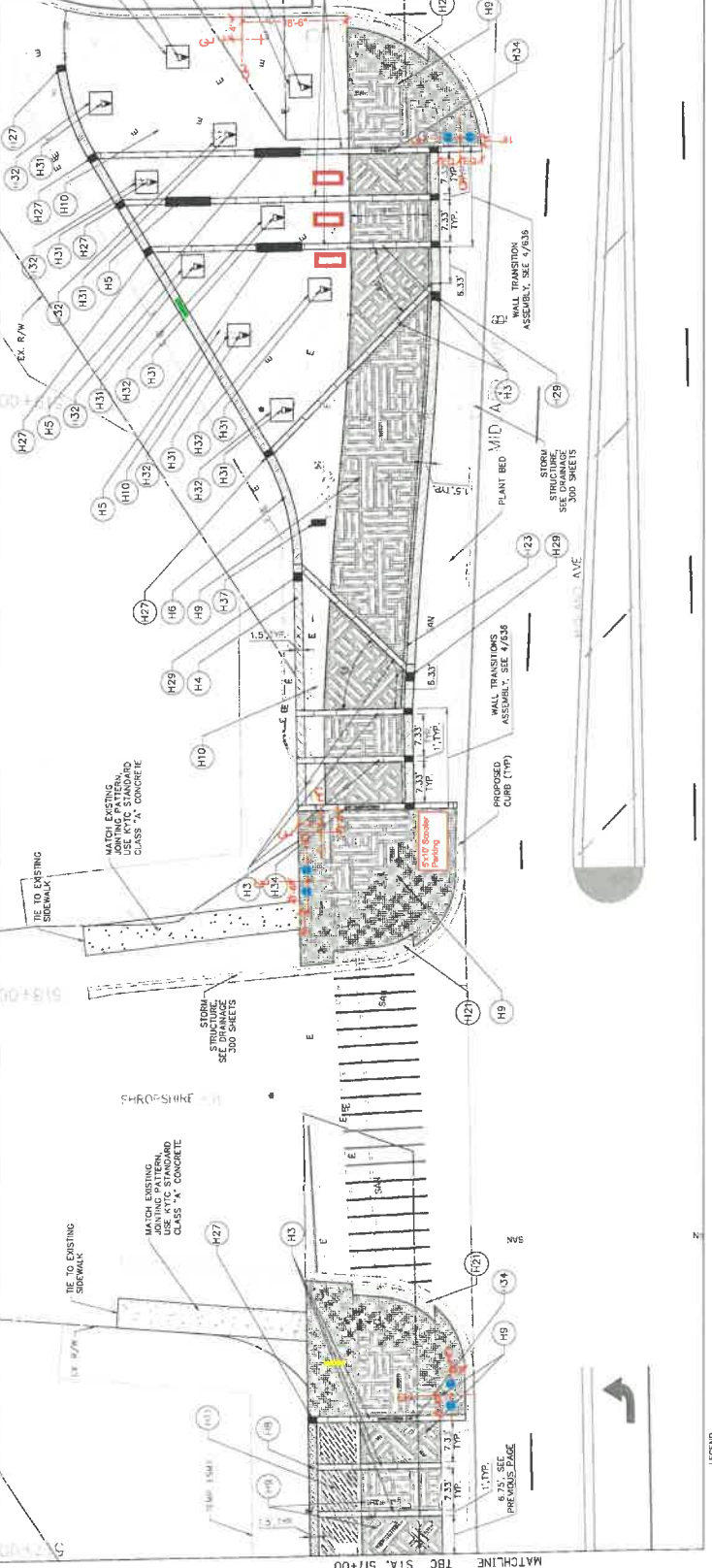
- TRASH & RECYCLE RECEPTACLES (SPACED 2' APART, TYP.)
- BIKE RACKS (SPACED 3' APART, TYP.)
- FIXED TABLES (TO BE LOCATED IN THE FIELD)

Scale: 0' 10' 20' 40'

Gresham Smith

LEXINGTON

HARDSCAPE PLAN
TOWN BRANCH COMMONS
STA. 514+00 TO STA. 517+00



FILE NAME: C:\TWP\MISC\YNS\8509\235_H20-H28.DWG
DATE PLOTTED: June 24, 2019
USER: Henry

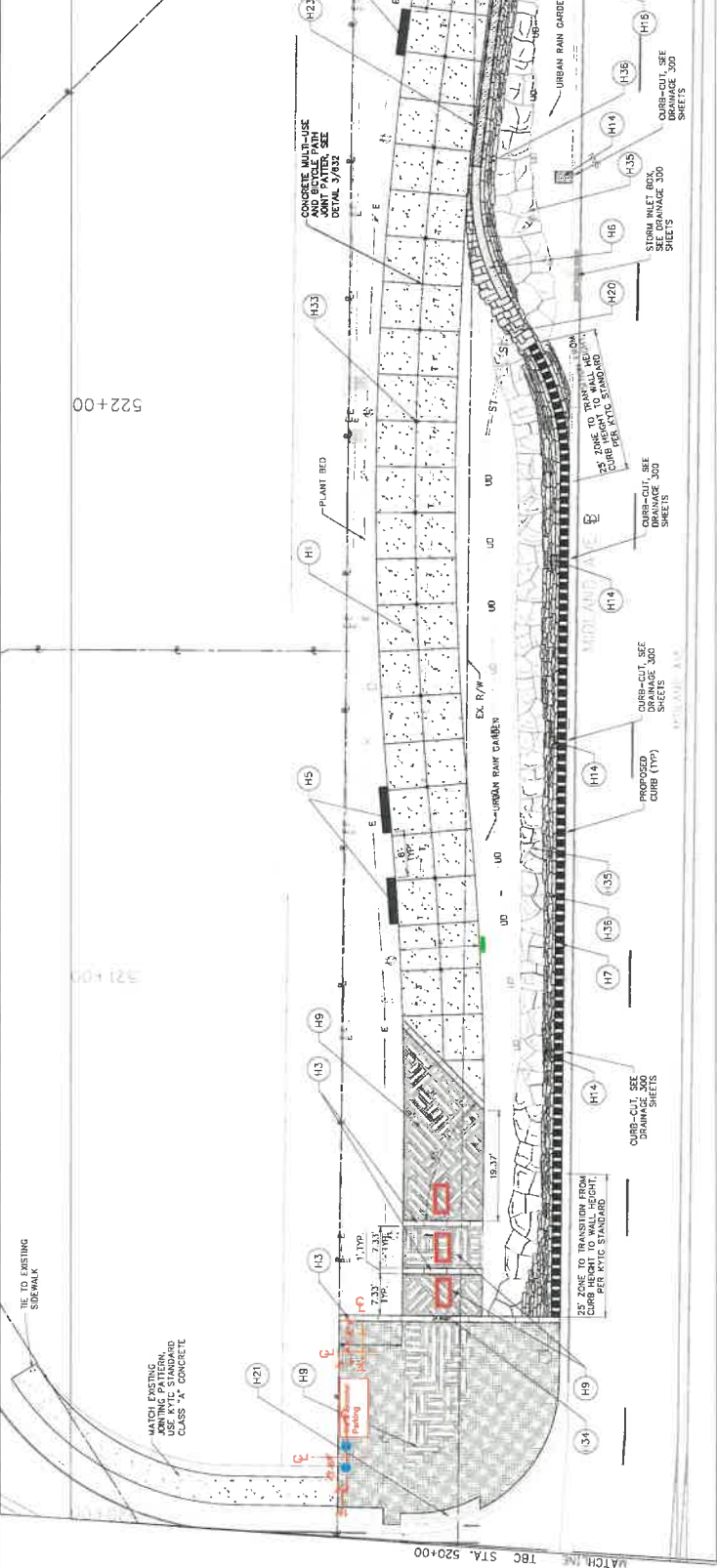
LEGEND

- TRASH & RECYCLE RECEPTACLES (SPACED 2' APART, TYP.)
- BIKE RACKS (SPACED 3' APART, TYP.)
- FIXED TABLES (TO BE LOCATED IN THE FIELD)

GENERAL NOTES

- ALL DIMENSIONS SHOWN ARE UNLESS OTHERWISE NOTED.
- SEE GENERAL SPECIFICATIONS AND NOTES FOR MATERIALS AND CONSTRUCTION.
- CONDUIT ASSOCIATE WITH LIGHTING.
- SEE DETAIL 4, SHEET 6 FOR KARST ENHANCEMENT.
- SEE DETAIL 4, SHEET 6 FOR EDUCATIONAL SIGNAGE.
- SEE DETAIL 1, SHEET 630 FOR CONCRETE PAVING W/ BINDER.
- SEE DETAIL 2, SHEET 630 FOR DOWN BRANCH PAVING BANDING.
- SEE DETAIL 2, SHEET 630 FOR FLUSH CURB PAVEMENT.
- SEE DETAIL 1, SHEET 630 FOR PRECAST BENCH AND FOOTER.
- SEE DETAIL 1, SHEET 630 FOR SIGNATURE WALL.
- SEE DETAIL 1, SHEET 630 FOR VEHICULAR WALL W/ O CAP.
- SEE DETAIL 2, SHEET 630 FOR SIGNATURE PAVING DR SLAB.
- SEE DETAIL 3, SHEET 630 FOR CRUSHED STONE PAVING W/ BINDER.
- SEE DETAIL 3, SHEET 630 FOR WATER FEATURE.

- | | | | |
|-------|---|-------|---|
| (H1) | CONCRETE PRECAST SIGNATURE PAVING W/ BINDER (SEE DETAIL 1, SHEET 630) | (H23) | CRUSHED STONE EDGING W/ BINDER (SEE DETAIL 4, SHEET 6) |
| (H2) | CONCRETE BICYCLE PATH (SEE DETAIL 2, SHEET 630) | (H24) | PRECAST BENCH ON TUBE FOOTER (SEE DETAIL 4, SHEET 6) |
| (H3) | DOWN BRANCH PAVING BANDING (SEE DETAIL 2, SHEET 630 FOR KARST CONCRETE) | (H25) | PRECAST WALL END PRECAST-A (SEE DETAIL 3, SHEET 634) |
| (H4) | FLUSH CURB PAVEMENT (SEE DETAIL 1, SHEET 630) | (H26) | PRECAST WALL END PRECAST-B (SEE DETAIL 2, SHEET 635) |
| (H5) | PRECAST BENCH AND FOOTER (SEE DETAIL 1, SHEET 630) | (H27) | PRECAST WALL INSERT (SEE DETAIL 1, SHEET 630) |
| (H6) | SIGNATURE WALL (SEE DETAIL 1, SHEET 630) | (H28) | PRECAST TRANSITION INSERT (SEE DETAIL 1, SHEET 630) |
| (H7) | VEHICULAR WALL W/ O CAP (SEE DETAIL 2, SHEET 630) | (H29) | PRECAST 45° WALL INSERT (SEE DETAIL 1, SHEET 630) |
| (H8) | SIGNATURE PAVING DR SLAB (SEE DETAIL 1, SHEET 630) | (H30) | WALL-LIGHT SYMBOL (SEE 400 FOR DETAIL INFO) |
| (H9) | CRUSHED STONE PAVING W/ BINDER (SEE DETAIL 3, SHEET 630) | (H31) | UP-LIGHT SYMBOL (SEE 400 FOR DETAIL INFO) |
| (H10) | WATER FEATURE (SEE DETAIL 3, SHEET 630) | (H32) | 4" x 4" SQUARE TREE FRAME AT SOIL CELLS (SEE DETAIL 3, SHEET 630) |
| (H11) | NOT USED | (H33) | DETECTABLE WARNING STRIP (SEE DETAIL 1, SHEET 629) |
| (H12) | NOT USED | (H34) | NOT USED |



LEXINGTON
Gresham Smith

HARDSCAPE PLAN
TOWN BRANCH COMMONS
STA. 520+00 TO STA. 523+00

LEGEND

- TRASH & RECYCLE RECEPTACLES (SPACED 2 APART, TYP.)
- BIKE RACKS (SPACED 3 APART, TYP.)
- FIXED TABLES (TO BE LOCATED IN THE FIELD)

GENERAL NOTES

- ALL DIMENSIONS SHOWN ON CURB BUILDING FACE, INDICATED.
- SEE ELECTRIC SHEETS FOR PERESTRAN LIGHT POLE LOCATION, ASSOCIATED W/ CASCADE LIGHTING.

KARST STREAMBED (SEE DETAIL 3, SHEET 6)

KARST EMBANKMENT (SEE DETAIL 4, SHEET 6)

EDUCATIONAL SIGNAGE (SEE SHEET 652)

W/ CAP

LT. MIDLAND AVE. STA. 522+10 TO 522+19 CONST. 9 L.F. KARST CASECADE

LT. MIDLAND AVE. STA. 522+18 TO 522+43 CONST. 24 L.F. SIGNATURE

MIDLAND AVE. STA. 522+45 TO 523+00 CONST. 56 L.F. TYPICAL WALL

LT. MIDLAND AVE. STA. 522+42 TO 523+00 CONST. 3 S.V. CRUSHED STONE

BRING W/ SIGNATURE STA. 522+01 TO 522+85 CONST. 2 EA. PRECAST BENCH AND FOOTER

LT. MIDLAND AVE. STA. 522+95 TO 523+00 CONST. 6 L.F. TOWN BRANCH PAPER BANDING

LT. MIDLAND AVE. STA. 520+00 TO 522+00 CONST. 13' 8" DIAMETER LANE MARKERS

LT. MIDLAND AVE. STA. 521+05 TO 521+33 CONST. 2 EA. PRECAST BENCH AND FOOTER

CRUSHED STONE EDGING W/ BINDER (SEE DETAIL 4, SHEET 6)

PRECAST BENCH ON TUBE FOOTING (SEE DETAIL 5, SHEET 6)

PRECAST WALL END PIECE-A (SEE DETAIL 3, SHEET 6)

PRECAST WALL END PIECE-B (SEE DETAIL 3, SHEET 6)

PRECAST WALL END PIECE-C (SEE DETAIL 3, SHEET 6)

PRECAST WALL END PIECE-D (SEE DETAIL 3, SHEET 6)

PRECAST 45° WALL INSERT (SEE DETAIL 1, SHEET 6)

PRECAST 45° WALL INSERT (SEE DETAIL 1, SHEET 6)

WALL-UP LIGHT SYMBOL (SEE 400 FOR DETAIL INFO)

UP-LIGHT SYMBOL (SEE 400 FOR DETAIL INFO)

4"X4" SQUARE TREE FRAME AT 50LB CELLS (SEE DETAIL 3, SHEET 6)

8" DIAMETER LANE MARKER (SEE SHEET NAME IN PARKING BAND SHEET DETAILED 1, SHEET 6)

STREET DOME

NOT USED

NOT USED

SPLASH PAD (SEE DETAIL 3, SHEET 6)

UNIT BOLLARD (SEE DETAIL 2, SHEET 6)

TYPICAL WALL WITH CAP (SEE DETAIL 1, SHEET 6)

PERMEABLE SIGNATURE PAVING (SEE DETAIL 2, SHEET 6)

PROPOSED UTILITY POLES

VEHICULAR RATED BASE (SEE DETAILS 2 & 4, SHEET 6)

KARST CASCADE (SEE DETAIL 2, SHEETS 6)

DETECTABLE WARNING STRIP

NOT USED

CONCRETE PEDESTRIAN (SEE DETAIL 1, SHEET 6)

CONCRETE BICYCLE PATH (SEE DETAIL 3, SHEET 6)

TOWN BRANCH PAPER BANDING (SEE DETAIL 2, SHEET 6)

FLUSH CURB PAPER (SEE DETAIL 1, SHEET 6)

PRECAST BENCH AND FOOTER (SEE DETAIL 4, SHEET 6)

SIGNATURE WALL (SEE DETAIL 1, SHEET 6)

VEHICULAR WALL (SEE DETAIL 1, SHEET 6)

TYPICAL WALL W/40 CAP (SEE DETAIL 3, SHEET 6)

SIGNATURE PAVING ON SLAB (SEE DETAIL 1, SHEET 6)

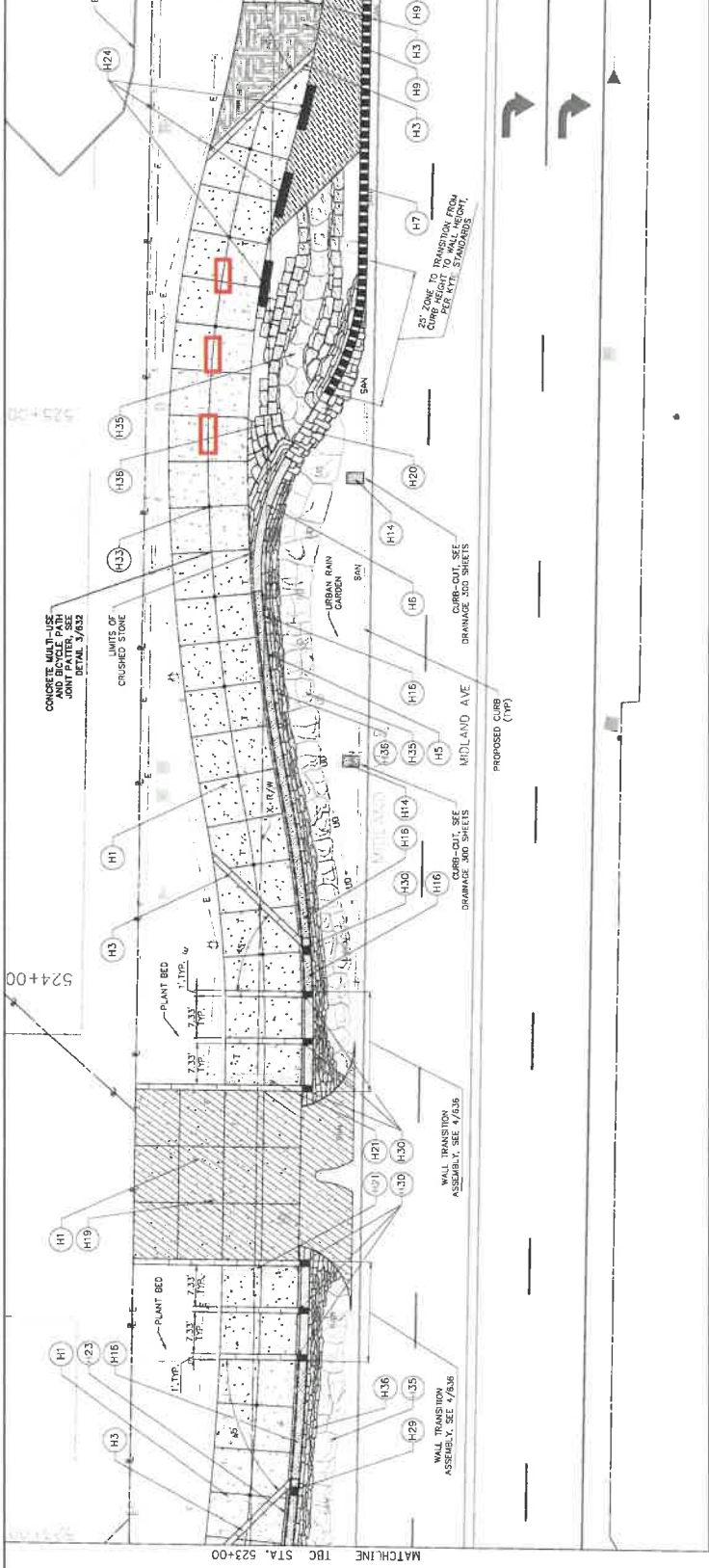
CRUSHED STONE PAVING W/ BINDER (SEE DETAIL 3, SHEET 6)

WATER FEATURE (SEE DETAIL 3, SHEET 6)

DATE PLOTTED: June 24, 2019

USER: Henry

FILE NAME: C:\np\pms\pms\4809\4275_H20-H28.DWG



LEGEND

- TRASH & RECYCLE RECEPTACLES (SPACED 2' APART, TYP.)
- BIKE RACKS (SPACED 3' APART, TYP.)
- FIXED TABLES (TO BE LOCATED IN THE FIELD)

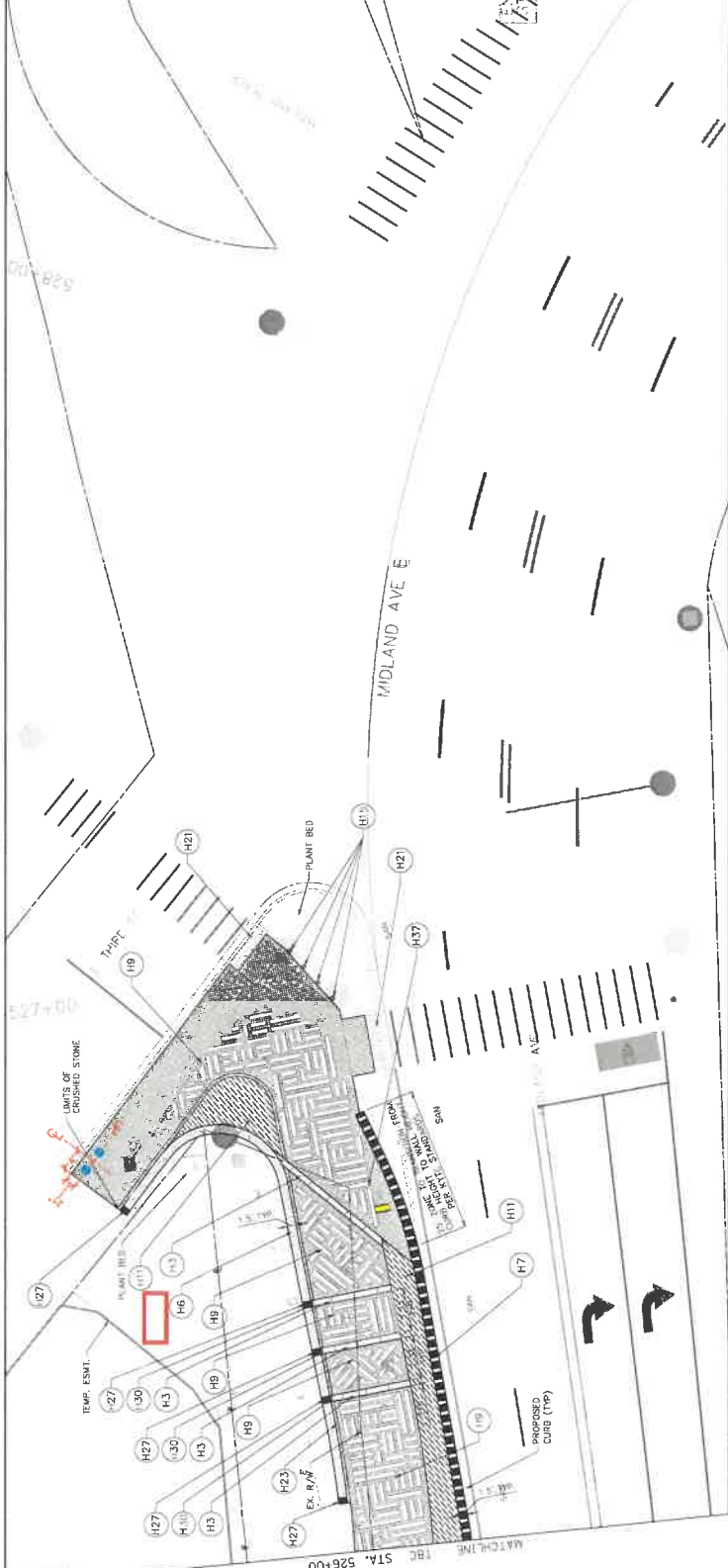
Symbol	Description
(H1)	CONCRETE FORESTRAN PART/MULTI-USE PATH (SEE DETAIL 1, SHEET 630)
(H2)	CONCRETE BIKEWAY (SEE DETAIL 3, SHEET 633)
(H3)	TOWN BRANCH PAGER BANDING (SEE DETAIL 2, SHEET 636)
(H4)	FLASH CURB PAPER (SEE DETAIL 1, SHEET 634)
(H5)	PRECAST BENCH AND FOOTER (SEE DETAIL 2, SHEET 635)
(H6)	SIGNATURE WALL (SEE DETAIL 2, SHEET 633)
(H7)	VEHICULAR WALL (SEE DETAIL 1, SHEET 634)
(H8)	TYPICAL WALL W/ W/ CAP (SEE DETAIL 2, SHEET 633)
(H9)	SIGNATURE PAVING ON CURB (SEE DETAIL 1, SHEET 633)
(H10)	CRUSHED STONE PAVING W/ BINNER (SEE DETAIL 3, SHEET 633)
(H11)	WATER FEATURE (SEE DETAIL SHEETS 640 THRU 649)
(H12)	NOT USED
(H13)	CONCRETE FORESTRAN PART/MULTI-USE PATH (SEE DETAIL 1, SHEET 630)
(H14)	CONCRETE BIKEWAY (SEE DETAIL 3, SHEET 633)
(H15)	TOWN BRANCH PAGER BANDING (SEE DETAIL 2, SHEET 636)
(H16)	FLASH CURB PAPER (SEE DETAIL 1, SHEET 634)
(H17)	PRECAST BENCH AND FOOTER (SEE DETAIL 2, SHEET 635)
(H18)	SIGNATURE WALL (SEE DETAIL 2, SHEET 633)
(H19)	VEHICULAR WALL (SEE DETAIL 1, SHEET 634)
(H20)	TYPICAL WALL W/ W/ CAP (SEE DETAIL 2, SHEET 633)
(H21)	SIGNATURE PAVING ON CURB (SEE DETAIL 1, SHEET 633)
(H22)	CRUSHED STONE PAVING W/ BINNER (SEE DETAIL 3, SHEET 633)
(H23)	WATER FEATURE (SEE DETAIL SHEETS 640 THRU 649)
(H24)	CRUSHED STONE EDGING W/ BINNER (SEE DETAIL 4, SHEET 631)
(H25)	PRECAST BENCH ON TUBE FOOTER (SEE DETAIL 3, SHEET 633)
(H26)	PRECAST WALL END PIECE-A (SEE DETAIL 1, SHEET 634)
(H27)	PRECAST WALL END PIECE-B (SEE DETAIL 2, SHEET 635)
(H28)	PRECAST WALL INSERT (SEE DETAIL 4, SHEET 634)
(H29)	PRECAST TRANSITION INSERT (SEE DETAIL 1, SHEET 633)
(H30)	PRECAST '45' WALL INSERT (SEE DETAIL 1, SHEET 633)
(H31)	LIGHT SIGNATURE (SEE DETAIL 1, SHEET 633)
(H32)	4"x4" SQUARE TREE FRAME AT EDGING W/ BINNER (SEE DETAIL 4, SHEET 631)
(H33)	8" DIAMETER LAKE MARKER (SEE DETAIL 5, SHEET 628)
(H34)	STREET NAME (SEE DETAIL 1, SHEET 629)
(H35)	KARST STREAMBED (SEE DETAIL 3, SHEET 631)
(H36)	KARST ENGAGEMENT (SEE DETAIL 4, SHEET 631)
(H37)	EDUCATIONAL SIGNAGE (SEE SHEET 650)
(H38)	LT. MIDLAND AVE. STA. 523+00 TO 523+94 CONST. 4.5 S.Y. CONCRETE MULTI-USE PATH
(H39)	LT. MIDLAND AVE. STA. 523+00 TO 523+41 CONST. 8 S.Y. CRUSHED STONE EDGING W/ BINNER
(H40)	LT. MIDLAND AVE. STA. 523+00 TO 523+41 CONST. 4 L.F. STREET NAME PAPER
(H41)	LT. MIDLAND AVE. STA. 523+00 TO 523+41 CONST. 3 L.F. TORCH-WALL W/ CAP
(H42)	LT. MIDLAND AVE. STA. 523+00 TO 523+97 CONST. 29 L.F. SIGNATURE WALL
(H43)	LT. MIDLAND AVE. STA. 523+97 TO 524+00 CONST. 26 S.Y. VEHICULAR WALL
(H44)	LT. MIDLAND AVE. STA. 524+00 TO 524+76 CONST. 8 S.Y. CRUSHED STONE EDGING W/ BINNER
(C1)	20' ZONE TO TRANSITION FROM CURB TO ADJACENT LANDSCAPE
(C2)	URBAN RAIN GARDEN
(C3)	CONCRETE MULTI-USE JOINT PATTERN (SEE DETAIL 3/632)
(C4)	LIMITS OF CRUSHED STONE

GENERAL NOTES

- ALL DIMENSIONS SHALL BE IN FEET UNLESS OTHERWISE NOTED.
- SEE ELECTRICAL RISE COORDINATION AND PEDESTRIAN LIGHT CONDUIT ASSOCIATION LIGHTING.

DATE PLOTTED: June 24, 2019
USER: herry

Gresham Smith
LEXINGTON
HARDSCAPE PLAN
TOWN BRANCH COMMONS
STA. 523+00 TO STA. 526+00



LEGEND

- TRASH & RECYCLE RECEPTACLES (SPACED 2' APART, TYP.)
- BIKE RACKS (SPACED 3' APART, TYP.)
- FIXED TABLES (TO BE LOCATED IN THE FIELD)

Gresham Smith
LEXINGTON

HARDSCAPE PLAN
TOWN BRANCH COMMONS
STA. 526+00 TO STA. 528+92.68

Symbol	Description
(H1)	CONCRETE PEDESTRIAN (SEE DETAIL 1, SHEET 630)
(H2)	CONCRETE BIKEWAY (SEE DETAIL 3, SHEET 630)
(H3)	TOWN BRANCH PARKER BANDING (SEE DETAIL 2, SHEET 632 FOR ADJOINING PAVINGS; SEE DETAIL 3 FOR ADJOINING PAVINGS; SEE DETAIL 4 FOR ADJOINING PAVINGS)
(H4)	FLUSH CURB PAPER (SEE DETAIL 1, SHEET 632)
(H5)	PRECAST BENCH AND FOOTER (SEE DETAIL 4, SHEET 635)
(H6)	SIGNATURE WALL W/O CAP (SEE DETAIL 2, SHEET 634)
(H7)	TYPICAL WALL W/O CAP (SEE DETAIL 1, SHEET 633)
(H8)	SIGNATURE PAVING ON SLAB (SEE DETAIL 1, SHEET 631)
(H9)	CRUSHED STONE PAVING W/ BINDER (SEE DETAIL 3, SHEET 631)
(H10)	WATER FEATURE (SEE DETAIL SHEETS 640 THRU 649)
(H11)	NOT USED
(H12)	NOT USED
(H13)	SPLASH PAD (SEE DETAIL 3, SHEET 633)
(H14)	UNILT BOLLARD (SEE DETAIL 2, SHEET 639)
(H15)	TYPICAL WALL WITH CAP (SEE DETAIL 1, SHEET 634)
(H16)	PERMEABLE SIGNATURE PAVING (SEE DETAIL 2 & 4, SHEET 630)
(H17)	PROPOSED UTILITY POLES
(H18)	VEHICULAR RATED BASE (SEE DETAILS 2 & 4, SHEET 630)
(H19)	KARST CASCADE (SEE DETAIL 2, SHEETS 636)
(H20)	DETECTABLE WARNING STRIP
(H21)	NOT USED
(H22)	NOT USED
(H23)	CRUSHED STONE EDGING W/ BINDER (SEE DETAIL 4, SHEET 631)
(H24)	PRECAST BENCH ON TUBE (SEE DETAIL 5, SHEET 635)
(H25)	PRECAST WALL END PIECE-A (SEE DETAIL 3, SHEET 634)
(H26)	PRECAST WALL END PIECE-B (SEE DETAIL 2, SHEET 635)
(H27)	PRECAST WALL END PIECE-C (SEE DETAIL 4, SHEET 634)
(H28)	PRECAST TRANSITION INSERT (SEE DETAIL 1, SHEET 635)
(H29)	PRECAST 45° WALL INSERT (SEE DETAIL 1, SHEET 636)
(H30)	WALL-LIGHT SYMBOL (SEE 400 FOR DETAIL INFO)
(H31)	UP-LIGHT SYMBOL (SEE 400 FOR DETAIL INFO)
(H32)	4"x4" SQUARE TREE FRAME AT SOL CELLS (SEE DETAIL 3, SHEET 630)
(H33)	Ø7 DIAMETER LANE MARKER (SEE DETAIL 3, SHEET 630)
(H34)	STREET MOUND
(H35)	KARST STREAMBED (SEE DETAIL 3, SHEET 616)
(H36)	KARST CURB/EMBANKMENT (SEE DETAIL 4, SHEET 616)
(H37)	EDUCATIONAL SIGNAGE (SEE SHEET 630)
(H38)	L1: MIDLAND AVE. STA. 526+00 TO 527+09 CONST. 21" S.V. SIGNATURE PAVING ON SLAB
(H39)	L1: MIDLAND AVE. STA. 528+00 TO 528+78 CONST. 77' L.F. VEHICULAR WALL
(H40)	L1: MIDLAND AVE. STA. 528+11 TO 528+46 CONST. 30' S.V. WATER WALL
(H41)	L1: MIDLAND AVE. STA. 528+46 TO 528+92.68 CONST. 4 EA. UNIT BOLLARDS
(H42)	L1: MIDLAND AVE. STA. 526+00 TO 527+09 CONST. 21" S.V. SIGNATURE PAVING ON SLAB
(H43)	L1: MIDLAND AVE. STA. 528+00 TO 528+78 CONST. 77' L.F. VEHICULAR WALL
(H44)	L1: MIDLAND AVE. STA. 528+11 TO 528+46 CONST. 30' S.V. WATER WALL
(H45)	L1: MIDLAND AVE. STA. 528+46 TO 528+92.68 CONST. 4 EA. UNIT BOLLARDS