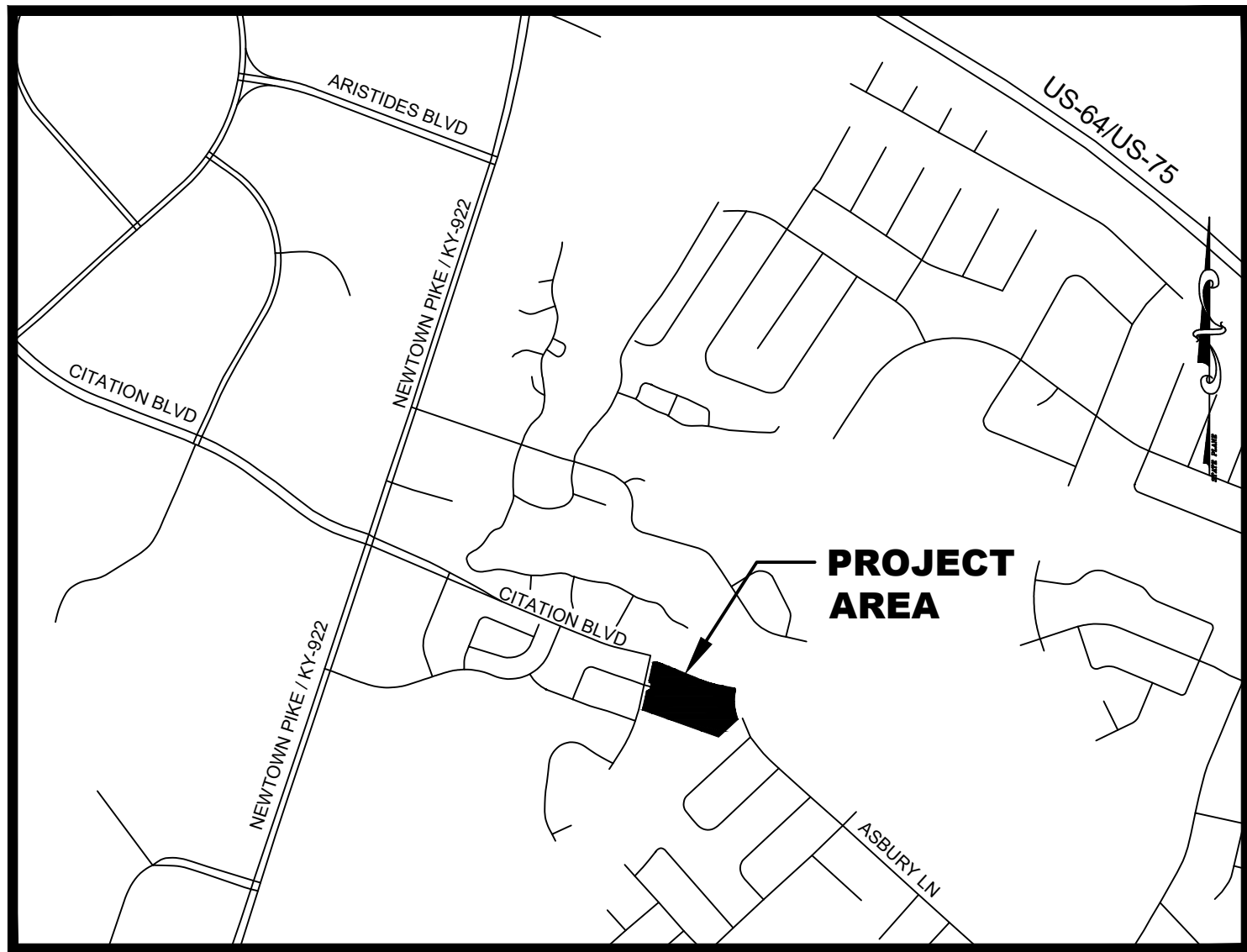


# THE WILLOWS AT CITATION SITE UTILITY RELOCATION PROJECT

FOR

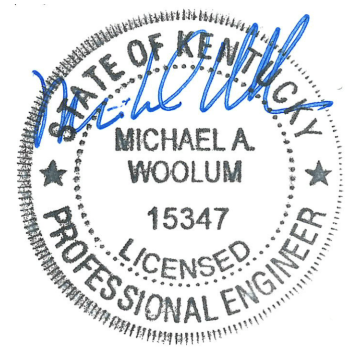
## TRILOGY HEALTH SERVICES, LLC



VICINITY MAP

TABLE OF CONTENTS	
SHEET NO.	SHEET TITLE
1	COVER SHEET
2	SITE DEMOLITION & EROSION CONTROL PLAN
3	SITE UTILITY LAYOUT SHEET
4	LANDSCAPE PLAN
5	SITE DETAILS
6	SITE DETAILS

651 PERIMETER DRIVE, SUITE 220  
LEXINGTON, KY 40517  
859 225-8500  
WWW.STRAND.COM  
CONTRACT NO. 1-2024  
CONTRACT NO. 2-2024  
CONTRACT NO. 3-2024



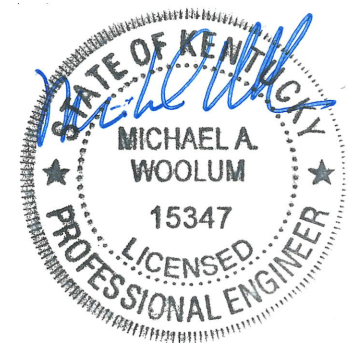
### BEFORE YOU DIG



THE CONTRACTOR IS INSTRUCTED TO CALL 1-800-752-6007 TO REACH KY 811, THE ONE-CALL SYSTEM FOR INFORMATION ON THE LOCATION OF EXISTING UNDERGROUND UTILITIES. THE CALL IS TO BE PLACED A MINIMUM OF TWO (2) AND NO MORE THAN TEN (10) BUSINESS DAYS PRIOR TO EXCAVATION. THE CONTRACTOR SHOULD BE AWARE THAT OWNERS OF UNDERGROUND UTILITIES ARE NOT REQUIRED TO BE MEMBERS OF THE KY 811 ONE-CALL BEFORE-U-DIG (BUD) SERVICE. THE CONTRACTOR MUST COORDINATE EXCAVATION WITH THE UTILITY OWNERS, INCLUDING THOSE WHOM DO NOT SUBSCRIBE TO KY 811. IT MAY BE NECESSARY FOR THE CONTRACTOR TO CONTACT THE COUNTY CLERK TO DETERMINE WHAT UTILITY COMPANIES HAVE FACILITIES IN THE AREA.

PERMIT REVIEW SET - 3/22/2024





DATE:	03/22/24
REVISIONS	
NO.	1
PERMIT REVIEW SET	

**SITE DEMOLITION & EROSION CONTROL PLAN**

**THE WILLOWS AT CITATION SITE UTILITY RELOCATION PROJECT**

**TRILOGY HEALTH SERVICES LLC**

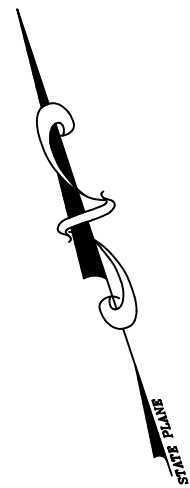
**LEXINGTON, KENTUCKY**

**JOB NO.**  
4932.002

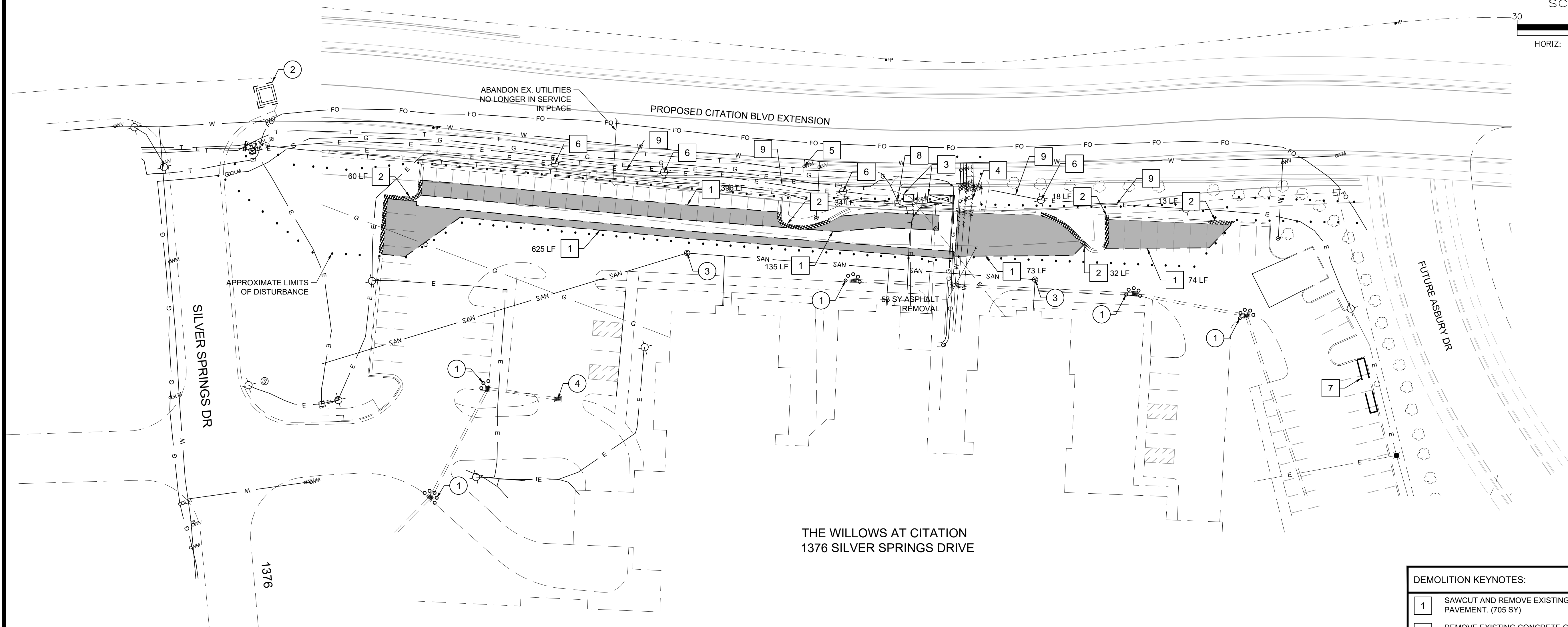
**PROJECT MGR.**  
MAW



**SHEET**  
**2**



SCALE  
0 15 30  
HORIZ: 1" = 30'



**SOIL EROSION CONTROL SEQUENCE**

IT IS THE CONTRACTORS RESPONSIBILITY TO CONTROL EROSION FROM THIS SITE DURING ITS PHYSICAL ALTERATION. THIS PLAN SEEKS TO PROVIDE SOME GUIDANCE IN THE MANNER IN WHICH THE OBJECTIVE TO CONTROL EROSION CAN BE ACCOMPLISHED. IT IS NOT THE INTENT OF THE ENGINEER TO LIMIT THE CONTRACTOR IN THE MANNER AND TECHNIQUES TO CONTROL EROSION. ANY PROPOSED BMP CHANGE SHOULD BE COORDINATED WITH THE ENGINEER. A RECOMMENDED RESOURCE FOR CONTRACTORS WORK IS THE "KENTUCKY BEST MANAGEMENT PRACTICES FOR CONSTRUCTION ACTIVITIES" GUIDE PUBLISHED BY THE KENTUCKY ENVIRONMENTAL AND PUBLIC PROTECTION CABINET, DIVISION OF CONSERVATION AND DIVISION OF WATER.

THE FOLLOWING IS A LIST IN SEQUENCE OF CONSTRUCTION ACTIVITIES TO CONTROL SOIL EROSION FOR THE PROJECT.

1. INSTALL PERIMETER SILT FENCE AND INLET PROTECTION AS SHOWN, PRIOR TO SITE DISTURBANCE.
2. CLEAR AND GRUB THE SITE AND DISPOSE OF ALL DEBRIS PROPERLY. IF AN AREA THAT HAS BEEN DISTURBED IS TO BE INACTIVE FOR MORE THAN 14 DAYS THE CONTRACTOR SHALL SUPPLY STABILIZATION BY MEANS OF TEMPORARY SEEDING AND MULCHING, SODDING, COVERING, OR OTHER EQUIVALENT EROSION CONTROL MEASURES AS SOON AS PRACTICAL. IN NO CASE SHALL AN AREA REMAIN UNTREATED FOR MORE THAN 14 DAYS AFTER CONSTRUCTION ACTIVITY HAS TEMPORARILY OR PERMANENTLY CEASED. CONTRACTOR SHALL PROVIDE TEMPORARY SEEDING IN ACCORDANCE WITH THE SPECIFICATIONS.

3. IN THE CASE THAT THE PERIMETER SILT FENCE AND INLET PROTECTION MEASURES ARE INADEQUATE, CONTRACTOR TO INSTALL SEDIMENT TRAPS AND/OR OTHER PROTECTION MEANS AS REQUIRED AND UPDATE SITE EROSION CONTROL PLAN AS NECESSARY.
4. MAINTAIN ALL PROTECTION MEASURES DURING CONSTRUCTION TO PREVENT ANY BLOCKAGES FROM ACCUMULATED SEDIMENT. AFTER EVERY RAIN IN EXCESS OF HALF AN INCH, SEDIMENT CONTROL DEVICES ARE TO BE INSPECTED, CLEANED AND REPAIRED IF NECESSARY. SILT FENCE MUST BE CLEANED IF SEDIMENT BUILDUP REACHES 1/3 OF THE SILT FENCE HEIGHT.
5. WHEN DISTURBED AREAS ARE AT FINAL GRADE AND ALL ACTIVITY IN THESE AREAS IS COMPLETE, PERMANENT VEGETATION SHALL BE PROVIDED AS SPECIFIED.
6. CONTRACTOR SHALL MAINTAIN ALL TEMPORARY EROSION CONTROL MEASURES THROUGHOUT THE CONSTRUCTION PHASE OF THIS PROJECT AND REMOVE ALL TEMPORARY EROSION AND SEDIMENT CONTROLS ONLY WHEN THERE IS A SUFFICIENT GROWTH OF GROUND COVERAGE TO PREVENT FURTHER EROSION. ONCE CONSTRUCTION IS COMPLETE, IT IS THE RESPONSIBILITY OF THE CONTRACTOR TO ENSURE THAT SEDIMENT HAS BEEN REMOVED FROM ALL PERMANENT STORM SEWER FACILITIES.
7. CONTRACTOR SHALL MAINTAIN STREET SWEEPER OR POWER BROOM ON SITE AND CLEAN LOOSE DEBRIS AFTER EACH DAY AND MORE FREQUENTLY AS NEEDED IN PARKING LOT AREAS & ADJACENT STREETS.

**CONTRACTOR COORDINATION NOTES**

1. CONTRACTOR IS RESPONSIBLE FOR WORKING WITH OWNER TO DETERMINE A STAGING AND STORAGE LOCATION ON SITE THAT DOES NOT LIMIT ACCESS TO THE FACILITY.
2. CONTRACTOR IS TO COORDINATE WITH DIFFERENT UTILITIES TO DETERMINE TIMING OF UTILITY INSTALLATION AND REMOVAL. IT IS CRITICAL THAT THE FACILITY DOES NOT LOSE ACCESS TO ANY UTILITY SERVICE THROUGHOUT THE DURATION OF CONSTRUCTION.

**EPSC KEYNOTES:**

1. INSTALL INLET PROTECTION. SEE DETAIL SHEET 5.
2. CONCRETE WASH PIT. SEE DETAIL SHEET 5.
3. DO NOT DISTURB EXISTING SANITARY SEWER.
4. CONTRACTOR TO PROTECT SURFACE INLET WITHOUT DISRUPTING TRAFFIC FLOW.

**LEGEND:**

- • • • • LIMITS OF DISTURBANCE
- ASPHALT REMOVAL
- UTILITY ABANDONMENT
- CURB REMOVAL

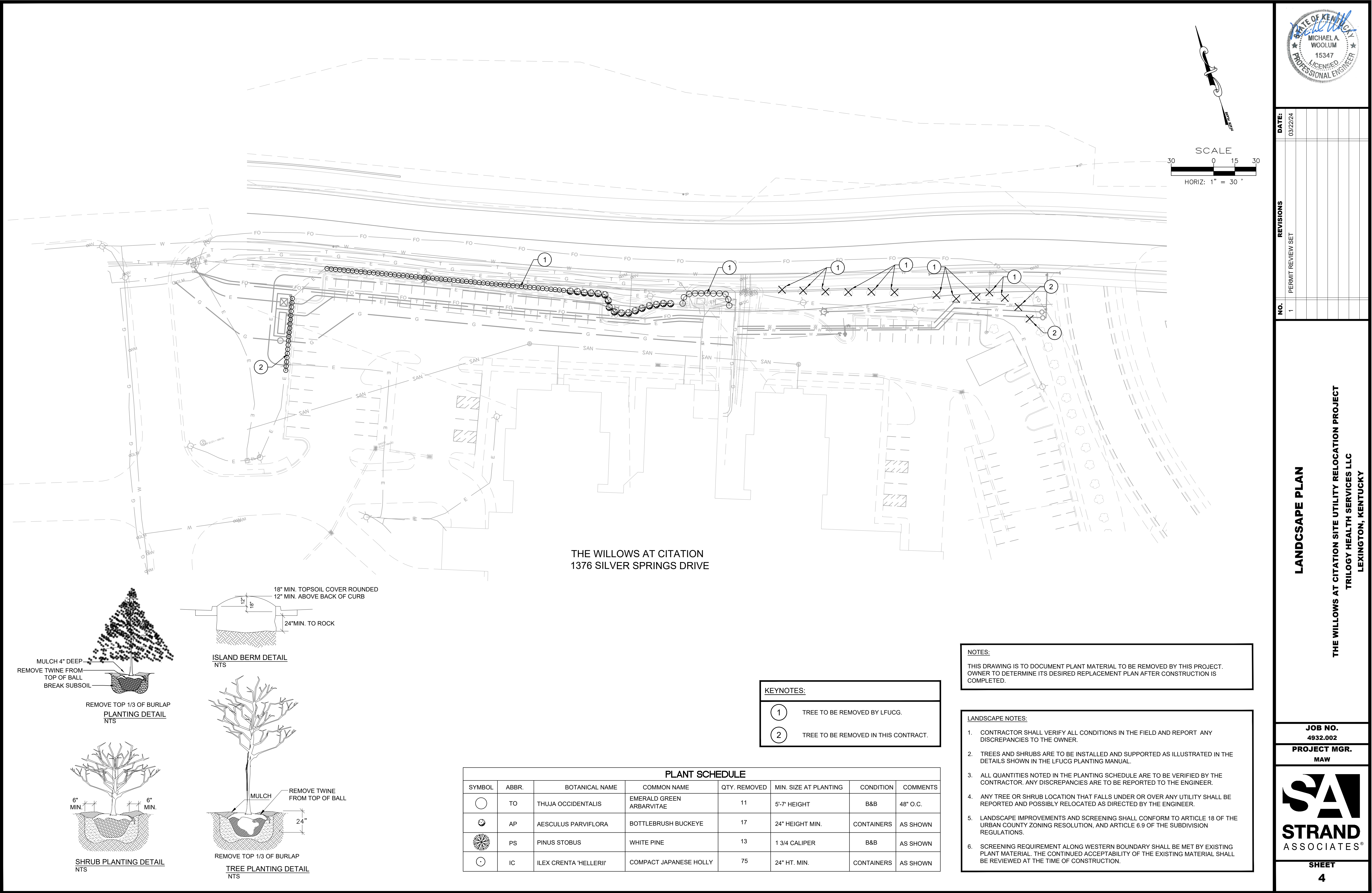
**DEMOLITION KEYNOTES:**

1. SAWCUT AND REMOVE EXISTING ASPHALT PAVEMENT. (705 SY)
2. REMOVE EXISTING CONCRETE CURB AND GUTTER.
3. CONTRACTOR TO COORDINATE WITH KU AND OWNER TO REMOVE EXISTING CONCRETE, GENERATOR AND TRANSFORMER PADS AFTER NEW INFRASTRUCTURE IS OPERATIONAL. (34 SY)
4. CONTRACTOR TO COORDINATE WITH KAW AND OWNER TO REMOVE EXISTING WATER SERVICE METER PITS, PIV & FDC AFTER NEW DOMESTIC WATER AND FIRE SERVICE IS OPERATIONAL.
5. WATER METER & BACKFLOW PREVENTOR FOR EXISTING IRRIGATION SYSTEM TO BE REMOVED PRIOR TO CONSTRUCTION BY OWNER.
6. EXISTING LIGHT POLES & FIXTURES TO BE REMOVED AND STORED ONSITE AT OWNER APPROVED LOCATION.
7. STAGING AREA FOR TEMPORARY LIGHT POLE STORAGE.
8. CONTRACTOR TO COORDINATE WITH WINDSTREAM, SPECTRUM, AND OWNER TO REMOVE EXISTING COMMUNICATION PEDESTALS AFTER NEW INFRASTRUCTURE IS OPERATIONAL.
9. DISCONNECT LIGHTING ELECTRICAL CIRCUIT PRIOR TO REMOVAL OF EXISTING LIGHT POLES.

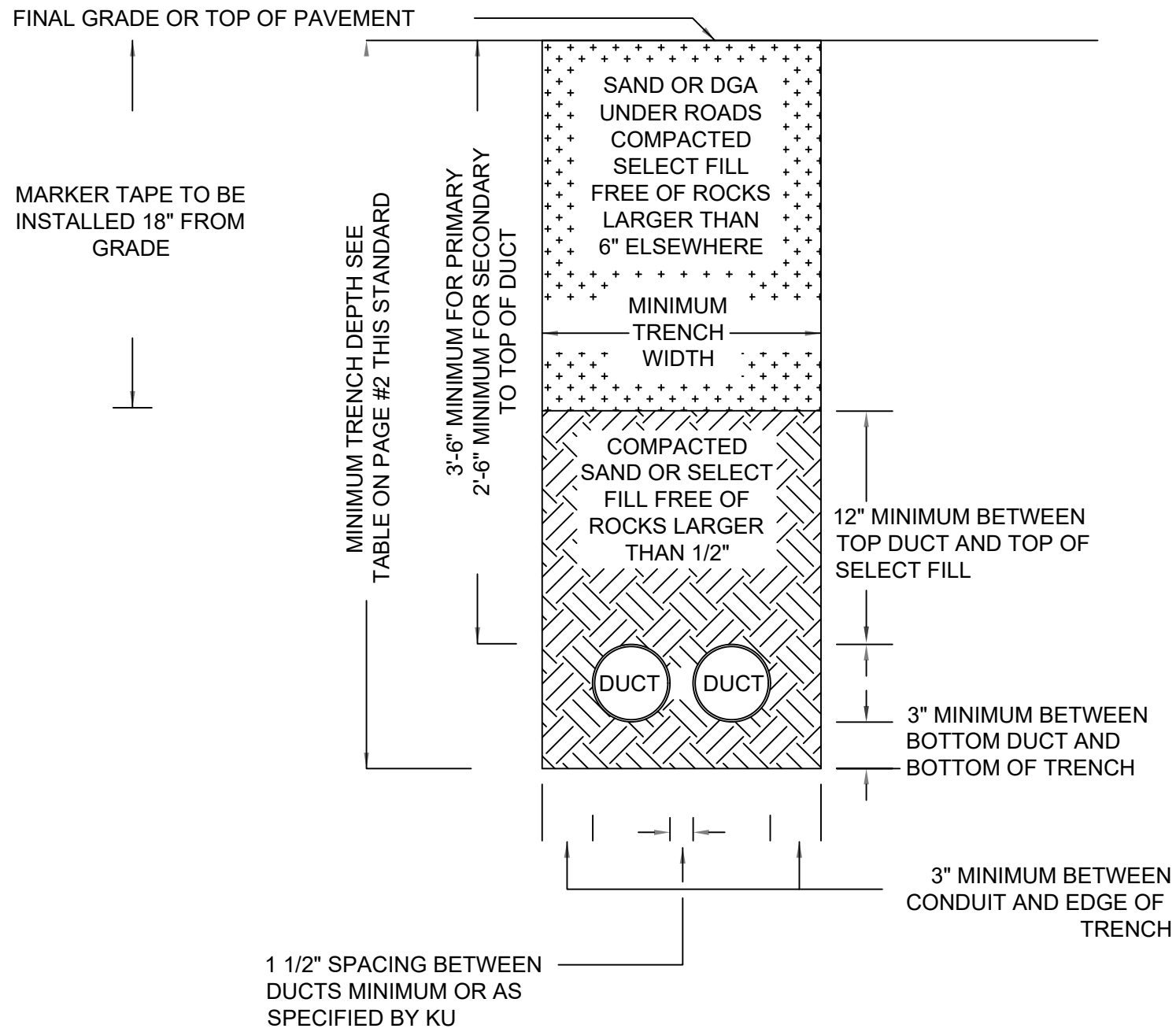
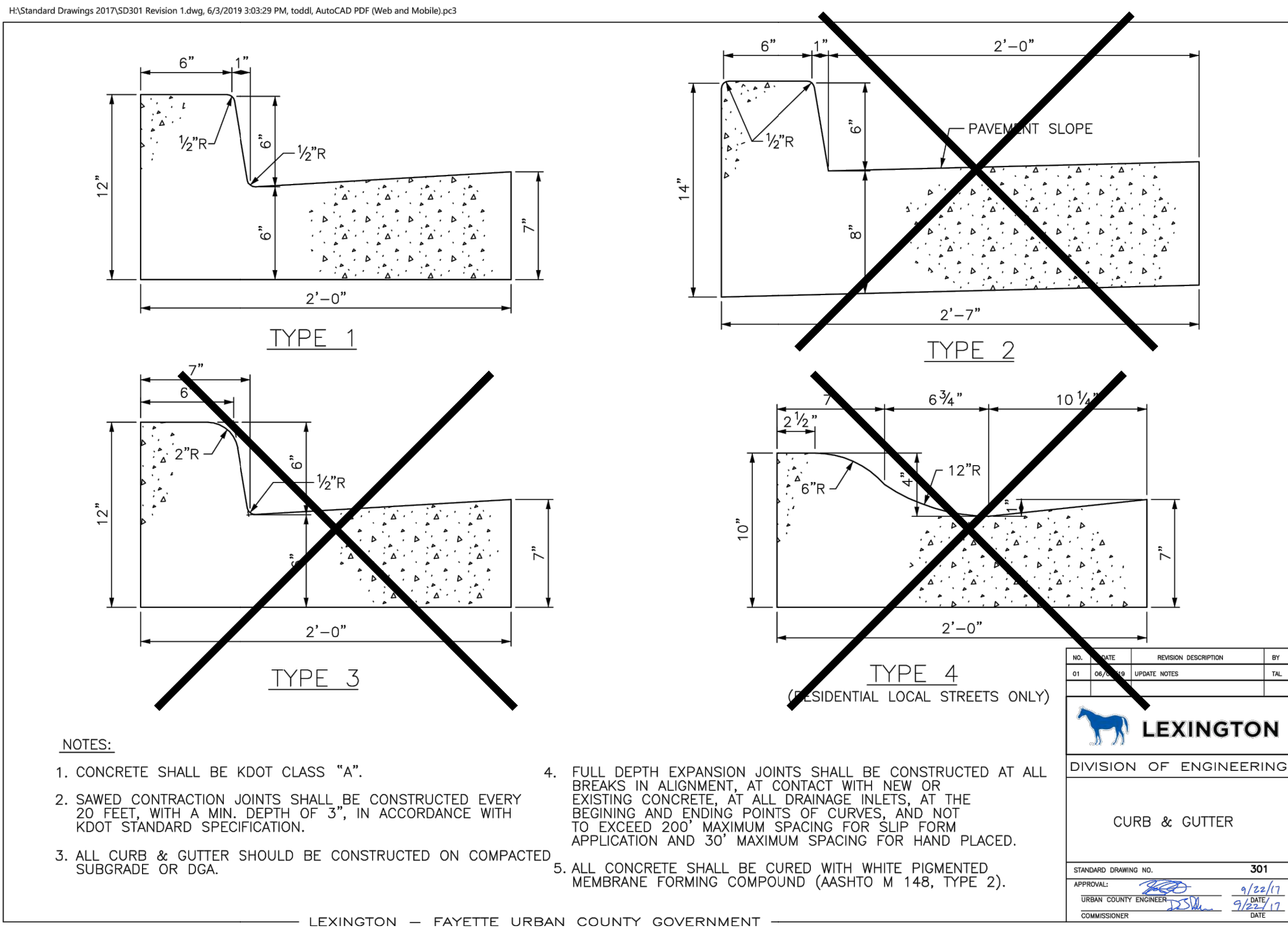
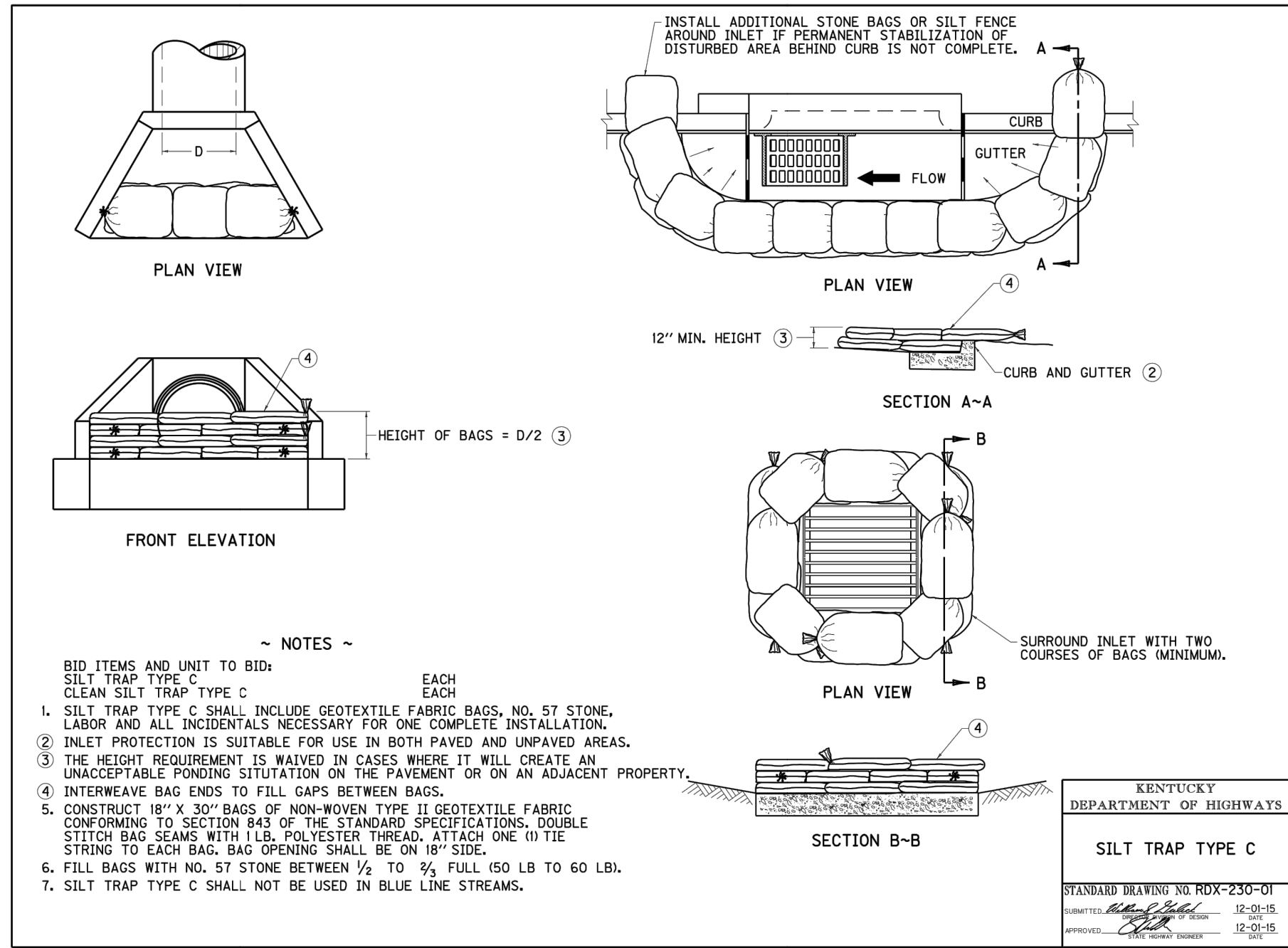






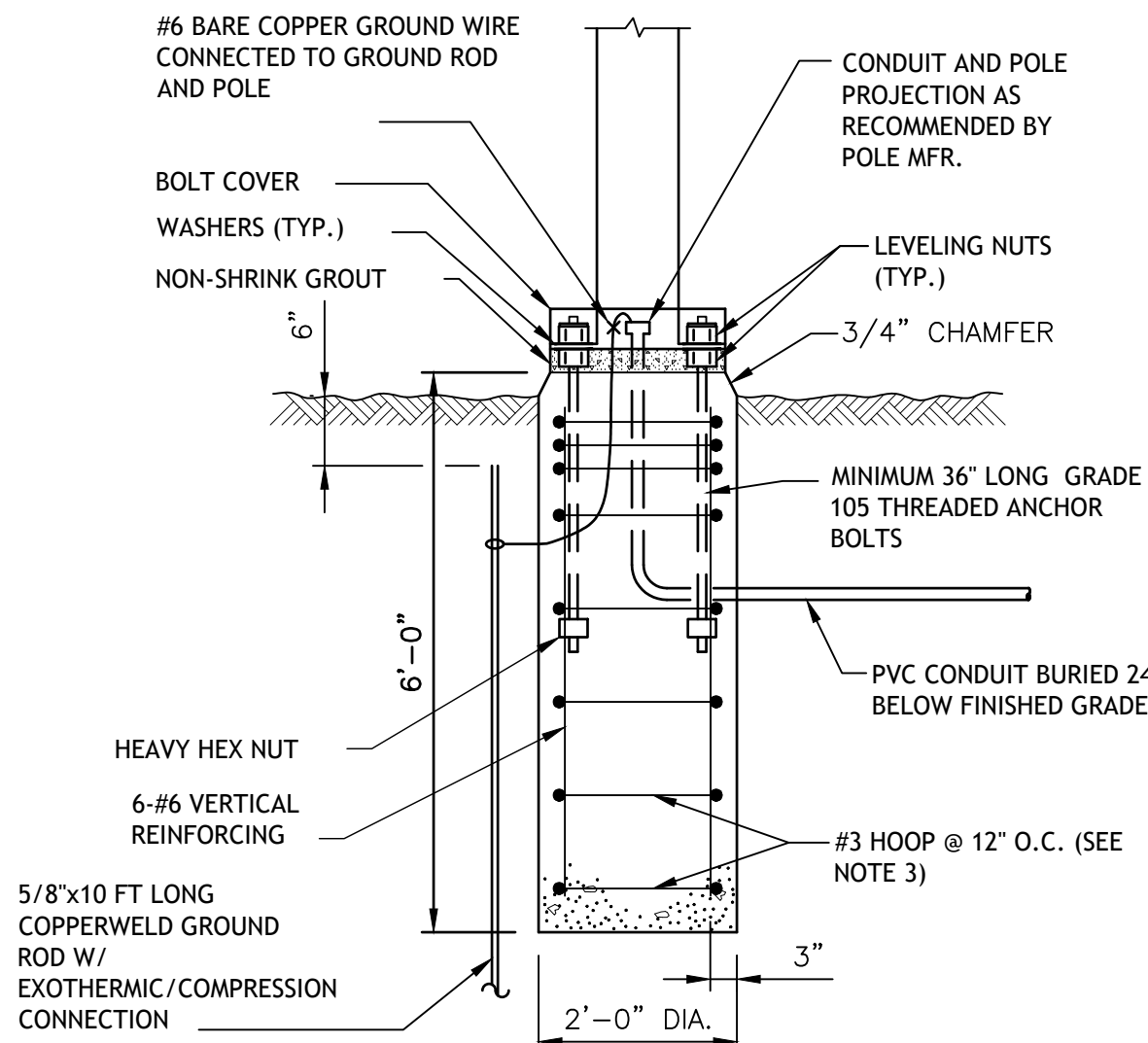
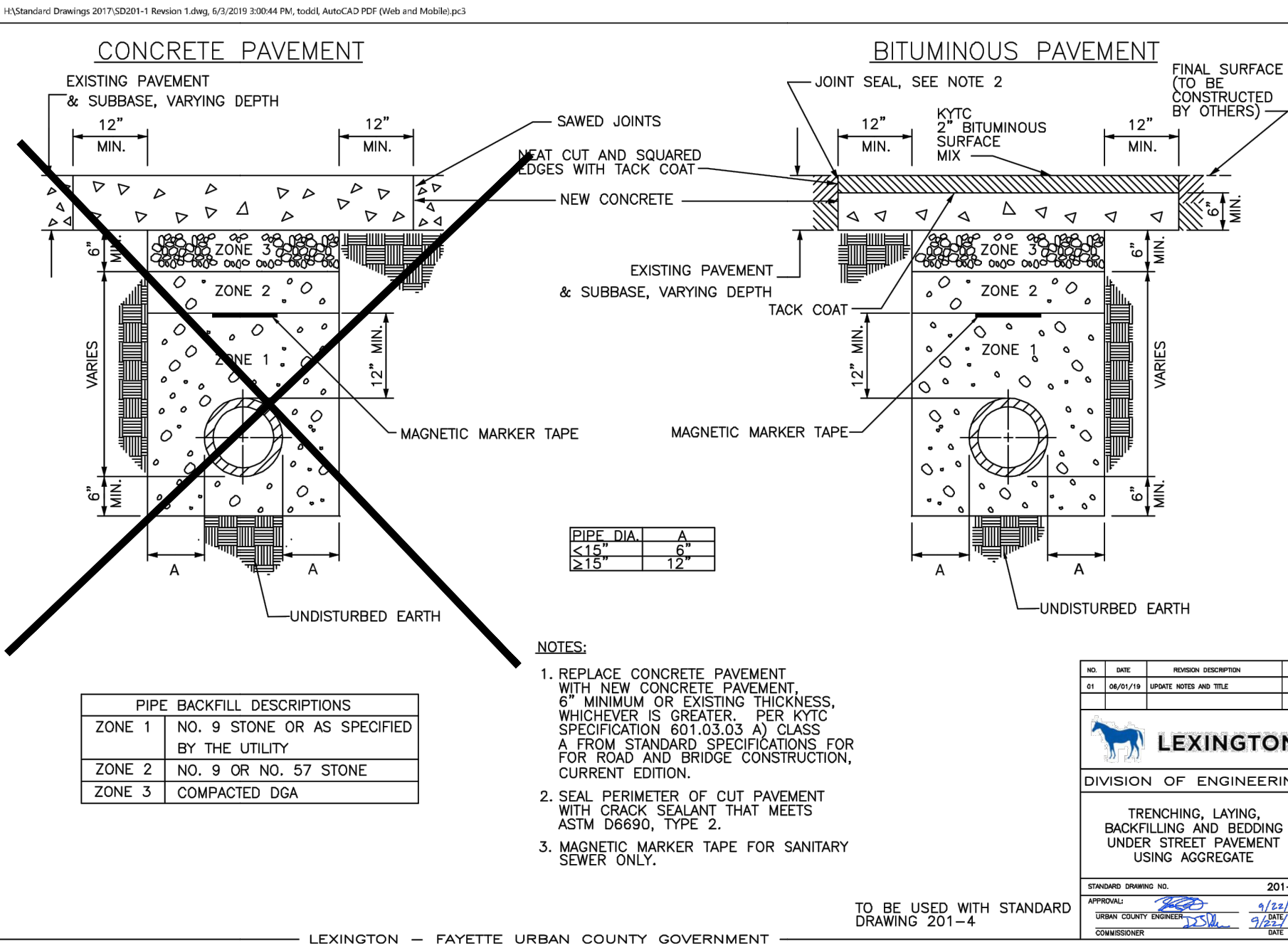






DETAIL PROVIDED BY KENTUCKY UTILITIES COMPANY

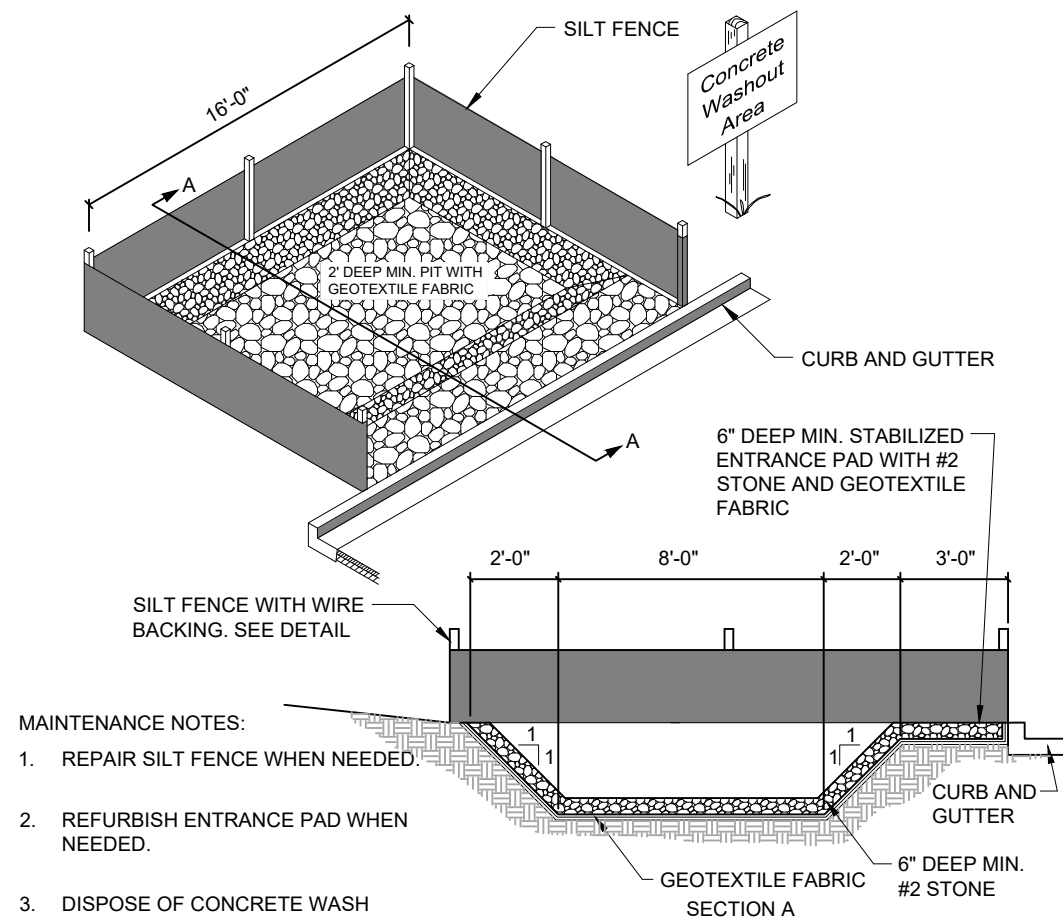
DUCT BANK TRENCH DETAIL  
N.T.S.



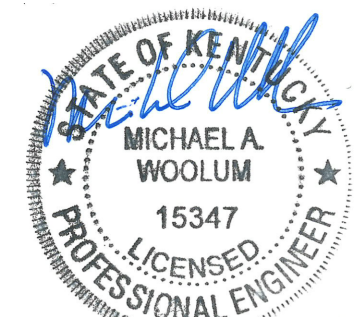
**NOTES:**

- TOP OF BASE TO BE 4" ABOVE TOP OF CURB, TOP 12" TO BE FORMED.
- POLE SHALL BE MOUNTED 4'-0" BACK FROM EDGE OF PAVEMENT, UNLESS NOTED OTHERWISE.
- PROVIDE 3-#3 TIES @ 3" O.C. AT TOP OF POLE BASE.

LIGHT POLE BASE  
N.T.S.



CONCRETE WASHOUT AREA  
N.T.S.



DATE:	03/22/24
REVISIONS	
NO.	1
PERMIT REVIEW SET	

**SITE DETAILS - 1**

THE WILLOWS AT CITATION SITE UTILITY RELOCATION PROJECT

TRILOGY HEALTH SERVICES LLC

LEXINGTON, KENTUCKY

**JOB NO.**  
4932.002

**PROJECT MGR.**  
MAW

**SA**  
**STRAND**  
ASSOCIATES®

**SHEET**  
5





POLISHED CHROME FIRE DEPARTMENT CONNECTION WITH 4 1/2" NATIONAL STD. THREADS, 18" HIGH MINIMUM ABOVE FINISHED GRADE. PROVIDE POLISHED CHROME SLEEVE.

SCH. 40 GALVANIZED STEEL PIPE

COMPANION FLANGE

12"x 12"x 4" THICK CONCRETE PAD

FINISHED GRADE

EARTH BACKFILL

12"±

D.I. PIPE

GRAVEL BACKFILL

D.I. PIPE

ALL FITTINGS TO BE RESTRAINED UTILIZING MEGA-LUG FITTINGS.