

R-238-2016  
 Original: R-714-2015  
 Contract #: 242-2015

**LEXINGTON-FAYETTE URBAN COUNTY  
 GOVERNMENT CONTRACT CHANGE ORDER**  
 Page 1 of 2

Date:	<b>April 19, 2016</b>
Project:	Idle Hour Park Improvements
Location:	Lexington
Contract No.	242-2015
Original Contract Amt.	\$479,230.00
Cumulative Amount of Previous Change Orders	\$159,497.35
Percent Change - Previous Change Orders	33.28%
Total Contract Amount Prior to this Change Order	\$638,727.35
Change Order No.	<b>2</b>

To (Contractor):  
 Bluegrass Contracting Corporation  
 1075 Red Mile Road  
 Lexington, KY 40504

You are hereby requested to comply with the following changes from the contract plans and specification;

**Current Change Order**

Item No.	Description of changes-quantities, unit prices, change in completion date, etc.	Decrease in contract price	Increase in contract price	
1	Soil Remediation Costs <b>Not To Exceed</b>		\$60,000.00	
	<b>Total decrease</b>	\$0.00		
	<b>Total increase</b>		\$60,000.00	
	<b>Net Amount of this Change Order</b>	\$60,000.00		
	<b>New Contract Amount Including this Change Order</b>	\$698,727.35		
	<b>Percent Change - This Change Order</b>			12.52%
	<b>Percent Change - All Change Orders</b>			45.80%

The time provided for the completion in the contract and all provisions of the contract will apply hereto.

Recommended by <i>Joyce</i>	(Project Manager)	Date <i>4/19/16</i>
Accepted by <i>[Signature]</i>	(Contractor)	Date <i>4/19/16</i>
Approved by <i>[Signature]</i>	(Director)	Date <i>4-19-16</i>
Approved by <i>[Signature]</i>	(Commissioner)	Date <i>4-19-16</i>
Approved by <i>[Signature]</i>	(Mayor <del>XXXX</del> )	Date <i>21-Apr-16</i>

*for Comm. Need*


**JUSTIFICATION FOR CHANGE**

PROJECT: Idle Hour Park Improvements

CONTRACT NO. 242-2015

CHANGE ORDER NO. 2

1. Necessity for change: Unsuitable soils have been found in the area where the expanded parking, drive to the passenger drop off, and vehicle turn around is planned. Contactor will utilize the contract unit costs and each incidence of unsuitable soils will be reviewed and priced separately before authorization to proceed is given.
2. Is proposed change an alternate bid? \_\_\_ Yes  X  No
3. Will proposed change alter the physical size of the project? \_\_\_ Yes  X  No  
If "Yes", explain.
4. Effect of this change on other prime contractors: N/A
5. Has consent of surety been obtained? \_\_\_ Yes  X  Not Necessary
6. Will this change affect expiration or extent of insurance coverage? \_\_\_ Yes  X  No  
If "Yes", will the policies be extended? \_\_\_ Yes \_\_\_ No
7. Effect on operation and maintenance costs:
8. Effect on contract completion date:

  
\_\_\_\_\_  
Mayor

21-Apr-16  
\_\_\_\_\_  
Date

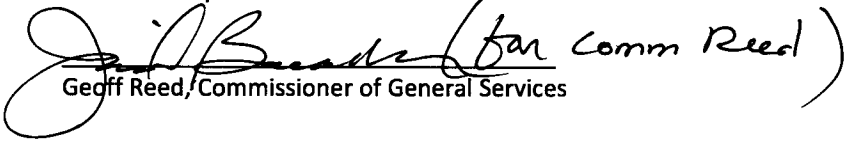
MAYOR JIM GRAY



LEXINGTON

GEOFFREY REED  
COMMISSIONER  
GENERAL SERVICES

TO: Mayor Jim Gray  
Sally Hamilton  
Urban County Council

FROM:   
Geoff Reed, Commissioner of General Services

CC: Jamshid Baradaran, Director, Facilities & Fleet Management

DATE: April 19, 2016

SUBJECT: Request Council Authorization to Execute Change Order #2 with Bluegrass Contracting Corporation in an amount **Not To Exceed** \$60,000.00 for the Idle Hour Park Improvements Project, Contract #242-2015

---

#### Request

Authorization to execute change order No. 2 for \$60,000.00 with Bluegrass Contracting Corporation, Lexington, Kentucky for the Idle Hour Park Improvements project. The new contract total is \$698,727.35.

#### Why are you requesting?

This change order is for soil remediation at Idle Hour Park where we are currently extending the parking area, adding a passenger drop off, and adding a vehicle turn around drive. Unsuitable soils were found as the contractor started work on the drive. The testing company and our design consultant have devised a plan for remediation in this area and the contractor has priced this work using the unit costs in the construction contract. The current area of remediation is priced at \$27,284.00.

We believe that additional unsuitable soils will likely be found beyond this area and would like to issue a change order for a **Not To Exceed** number of \$60,000. The contractor will be paid based on the contract unit costs if additional unsuitable soils are found. Each incidence of unsuitable soils will be reviewed by our design consultant in collaboration with the testing agency and LFUCG. The contractor will price the work and those costs will be reviewed by our design consultant and the LFUCG project manager before the contractor would be told to proceed.

It is important that this project is completed in time for the park to re-open once the construction of the new Senior Center is complete so we are proposing this approach to prevent further delays in construction.



**What is the cost in this budget year and future budget years?**

The cost for this FY is: \$60,000.00

The cost for future FY is: \$0

**The funds are budgeted in:**

Account number:

FUND	DEPT ID	SECTION	ACCOUNT	AMOUNT
1105	606102	6081	90511	\$60,000.00

**File Number:**

Director/Commissioner: Jamshid Baradaran, Director of Facilities & Fleet

**PROJECT:** Construction Services for Idle Hour Park Improvements  
 LFUCG Bid No. 103-2015

**RFP Number:** 3

**USING AGENCY:**  
 LFUCG

**DATE OF ISSUANCE:** 04-12-2016

**A/E NUMBER:** 1505

**CONTRACTOR:**  
 Bluegrass Contracting Corporation  
 ATTN: Dave Luttrell

**ARCHITECT:**  
 Element Design  
 Ramona Fry, Project Manager

Please submit an itemized quotation for changes in the Contract sum and / or time per the proposed modifications to the Contract Documents as described in this Proposal Request.

***THIS IS NOT A CHANGE ORDER NOR A DIRECTION TO PROCEED WITH THE WORK DESCRIBED HEREIN.***

Description of Change: Provide pricing to remediate existing subgrade conditions uncovered at new parking lot area. NOTE- extend remediation 5' to each side of parking area beyond dimensions indicated on attached to avoid failure at pavement edges.

Per attached, provide pricing to overexcavate 24" below proposed pavement section, install Tensar BS 1200 or similar approved product, backfill with #2 stone to design subgrade. Utilize Contract Unit Prices for applicable work.

Provide breakdown of all labor and materials for work items not included in Unit Prices. Note maximum 15% OH&P total allowed for items excluding Unit Prices, wherein OH&P are already included in unit price.

Attachments: Geotechnical testing services report by CSI, dated April 6, 2016.

Origin of Change: Field condition.

COPIES TO: file

BY: Ramona Fry, PLA, ASLA, LEED BD+C



## **Consulting Services Incorporated**

*Lexington 859.309.6021 | Cincinnati 513.252.2059 | Louisville 502.532.8269  
Geotechnical & Materials Engineering | IBC Special Inspection | Material Testing*

<b>PROJECT:</b>	Idle Hour Park	<b>JOB NUMBER:</b>	LX160075
<b>CLIENT:</b>	Bluegrass Contracting	<b>WEATHER:</b>	Cloudy, Low 50's
<b>CSI PROFESSIONAL:</b>	Shawn Ferrell - NICET II, SI	<b>DATE:</b>	Wednesday, April 6, 2016

### **Material Testing - Summary of Observations**

A CSI representative arrived on-site as requested by Bluegrass Contracting to perform Material Testing Services for Soil Construction. While on site, the CSI representative met with Dave Luttrell and David Sleet with Bluegrass Contracting.

Bluegrass Contracting was cutting the roadway and parking areas to the top of subgrade. one dozer was cutting the area to grade and pushing the cut material to a track hoe which was loading tri-axle dump trucks using to haul off the site. The area of grade work was approximately 54 feet from the end of the retaining wall and extended to the tie back of the existing road.

CSI observed a proof roll conducted by the contractor for the soil sub-grade beginning at the end of the existing asphalt roadway to 193 linear feet utilizing a loaded tri-axle dump truck. The proof-roll consisted of the loaded truck routing over the sub-grade in a forward and backward motion, then moving laterally one tire width and repeating the motion until the exposed sub-grade had been rolled.

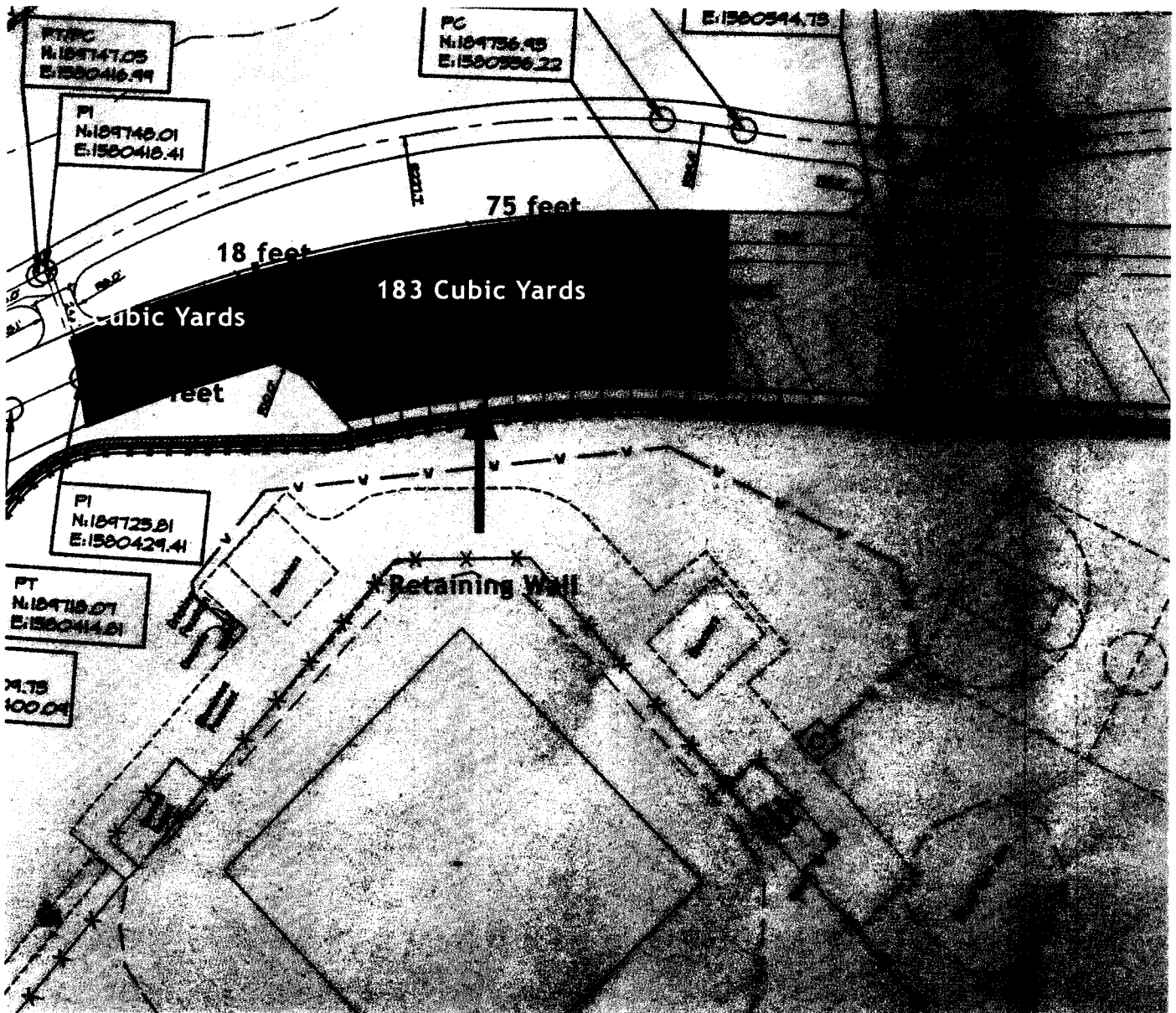
The proof roll revealed soft pumping material throughout the roadway beginning at the end of the existing asphalt roadway to 130 linear feet. The pumping was evident throughout the full width of the proposed roadway and through the proposed Keystone retaining wall area. The remaining portion of the proposed roadway revealed minimum deflection.

The soft pumping area measured to be 75 feet by 33 feet and 55 feet by 18 feet. A test pit was excavated to determine the depth of the soft material. The test pit was advanced down to a depth of two feet with no bearable material encountered through this point. An estimated 256 cubic yards of material was measured to be excavated out, as shown Figure 1.

Based on our reconnaissance of the site and our understanding of the project we believe the soft soils encountered will not support the proposed construction and will need to be stabilized to facilitate the construction above the subgrade. Such stabilization can be achieved by undercutting the soft materials down two feet, lining the soft area with a reinforced geotextile fabric and backfilling with a #2 stone like aggregate back up to the designed subgrade elevation. Once the stabilization has occurred the area should be evaluated by proof rolling to verify stability prior to placement of the pavement section or Keystone wall.

Observations were reported to Dave Luttrell and David Sleet with Bluegrass Contracting.

Figure 1: Approximate Area of Observations



Legend

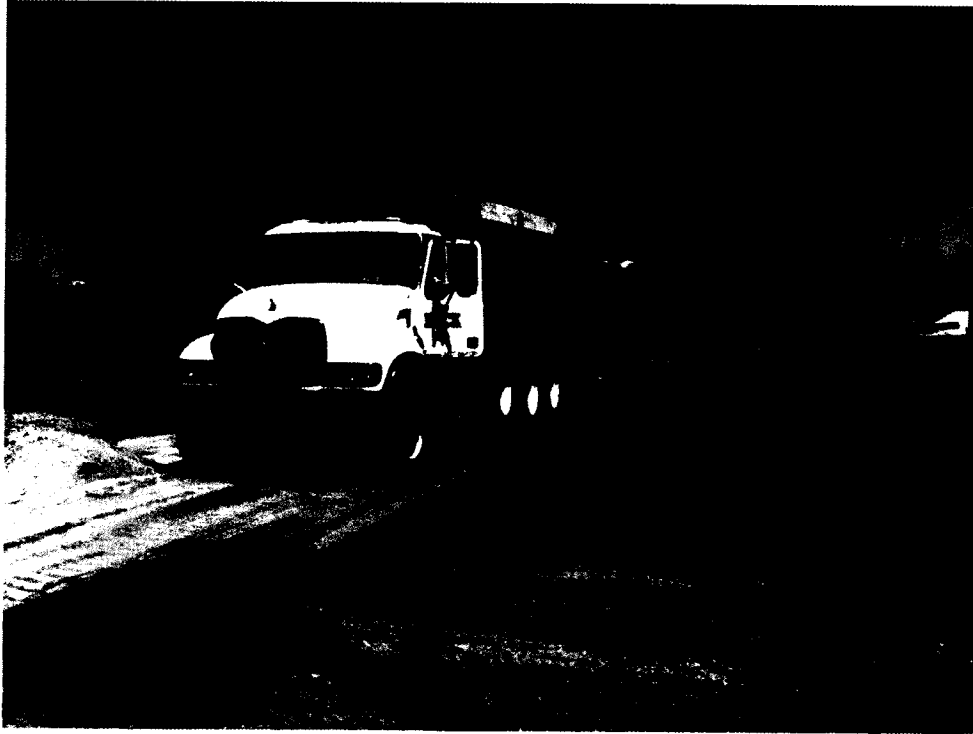
Approximate Area of Minimum Deflection/Pumping- No Undercut Required

Approximate Area of Pumping and Rutting-Undercut Required

---

**Project Photos**

---



**Photo 1: View Of Roadway Being Cut To Grade**



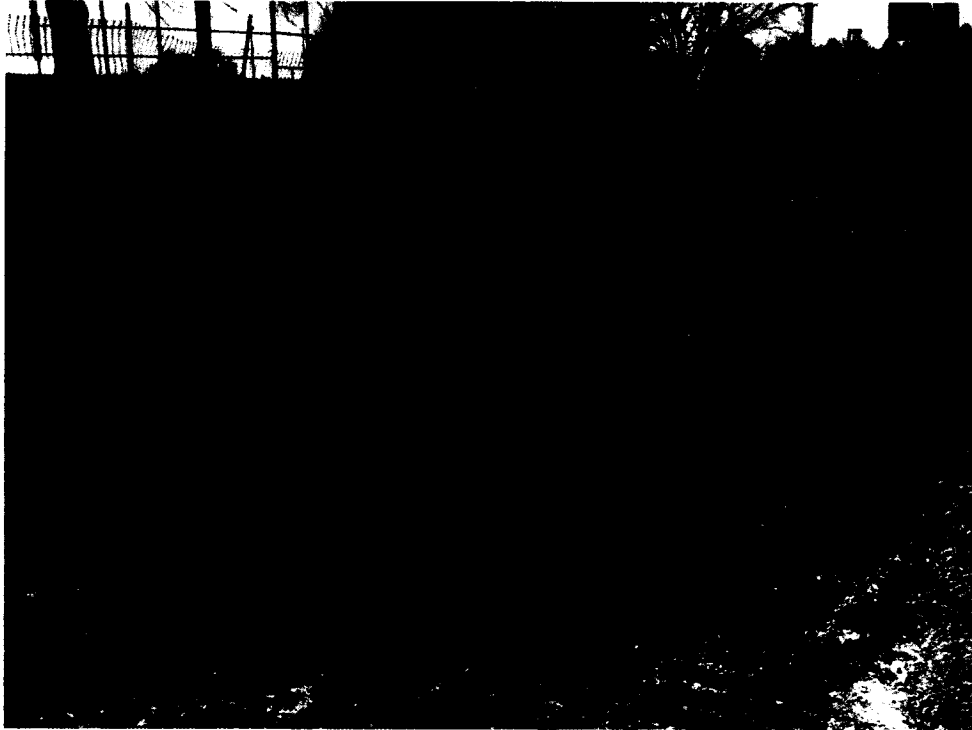
**Photo 2: View Of Area Along The Retaining Wall**



---

**Project Photos**

---



**Photo 3: View Of Roadway Being Cut To Grade**



**Photo 4: View Of Loaded Truck Performing Proof Roll For The Subgrade**

---

**Project Photos**

---



**Photo 5: View Of Pumping And Rutting During The Proof Roll**



**Photo 6: View Of Ruts After Proof Roll**

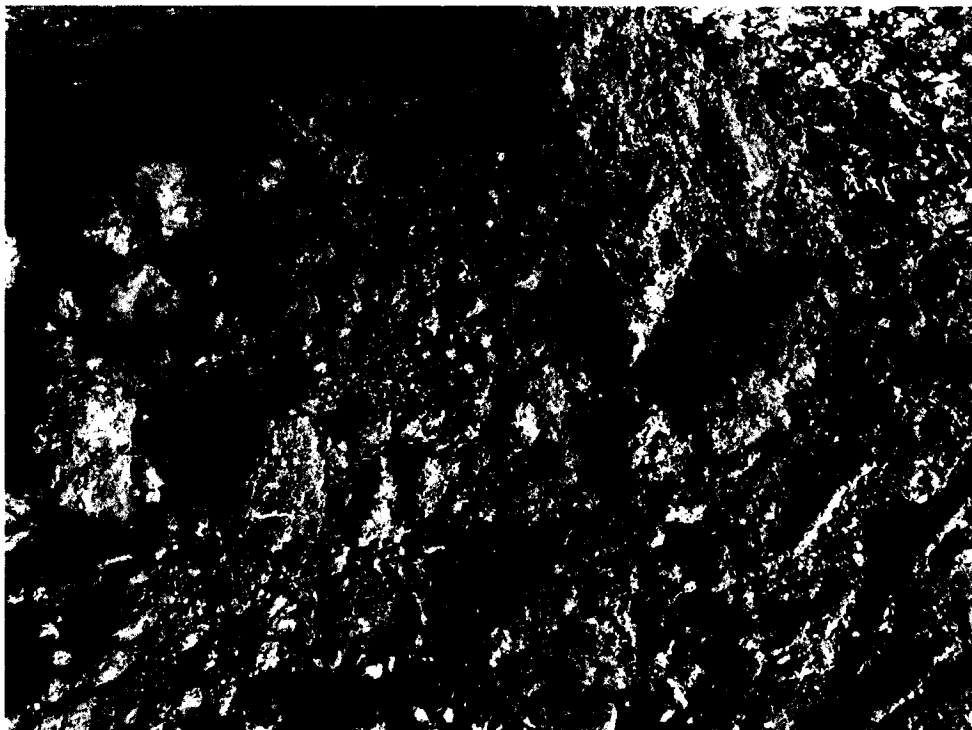
---

**Project Photos**

---



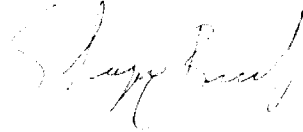
**Photo 7: View Of Test Pit Excavated Approximately 2 Feet In Depth**



**Photo 8: View Of Material Excavated From The Test Pit**

*A final report is an instrument of professional service. Any conclusions drawn from this report should be discussed with and evaluated by the professional involved. CSI professionals are represented on site solely to observe materials, installation, fabrication, erection or placement of components and connections to ensure compliance with approved construction documents and referenced standards. The presence and activities of our field representatives do not relieve any contractor from their obligation to meet contractual requirements.*

**This is the Final Field Report Reviewed By:**



**4/11/16**

---

Shayne Brashear

---

Date

**END OF REPORT**



# BLUEGRASS CONTRACTING CORPORATION

P.O. Box 11638 Lexington, Kentucky 40576-1638 Ph: (859) 231-0069 Fax: (859) 281-6457

April 14<sup>th</sup>, 2016

Element Design  
ATTN: Ramona Fry, Project Manager  
400 Old Vine Street, Suite 206  
Lexington, KY 40507

RE: Construction Services for Idle Hour Park Improvements  
LFUCG Bid No. 103-2015

Dear Ms. Fry,

Below is our pricing to perform the undercut of unsuitable material for the roadway and retaining wall as detailed in the CSI report dated April 6<sup>th</sup>, 2016. I have adjusted the quantities based on CSI recommendation to undercut five (5) feet outside the edge of the roadway and include undercut under the retaining wall.

408 CY Unsuitable Soil Removal @ \$26 CY = \$10,608.00  
530 TN #2 Stone @ \$28/TN = \$14,840.00  
612 SY BX1200 @ \$3/SY = \$1,836.00

**Total: \$27,284.00**

These quantities are based on CSI site observation and recommendations in their report. If you have any questions please feel free to call me at our office at (859) 231-0069. Thank you.

Sincerely,



Dave Luttrell, P.E.  
Vice President  
BLUEGRASS CONTRACTING CORP.