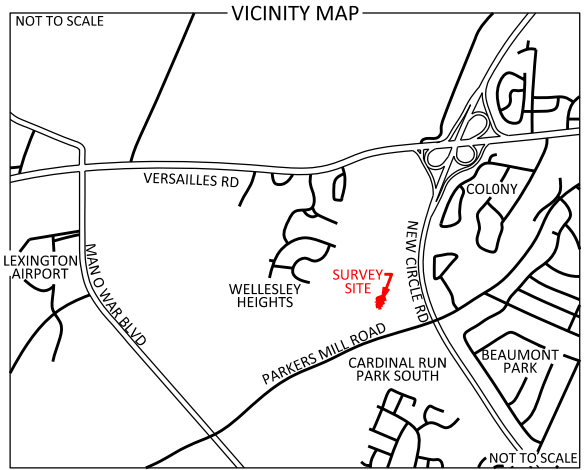


**PURPOSE OF PLAT**

1. TO CREATE TRACT 1 BEING A FEE TRACT TO BE CONVEYED FROM THE LAND OF LFUCG D.B. 2083 PG. 461 AS SHOWN HEREON.
2. TO CREATE PERMANENT GUYING EASEMENT NO. 1 & PERMANENT GUYING EASEMENT NO. 2 ACROSS THE LAND OF LFUCG D.B. 1954 PG. 428 AS SHOWN HEREON.
3. TO CREATE A TEMPORARY CONSTRUCTION EASEMENT ACROSS THE LAND OF LFUCG D.B. 1954 PG. 428 AS SHOWN HEREON.

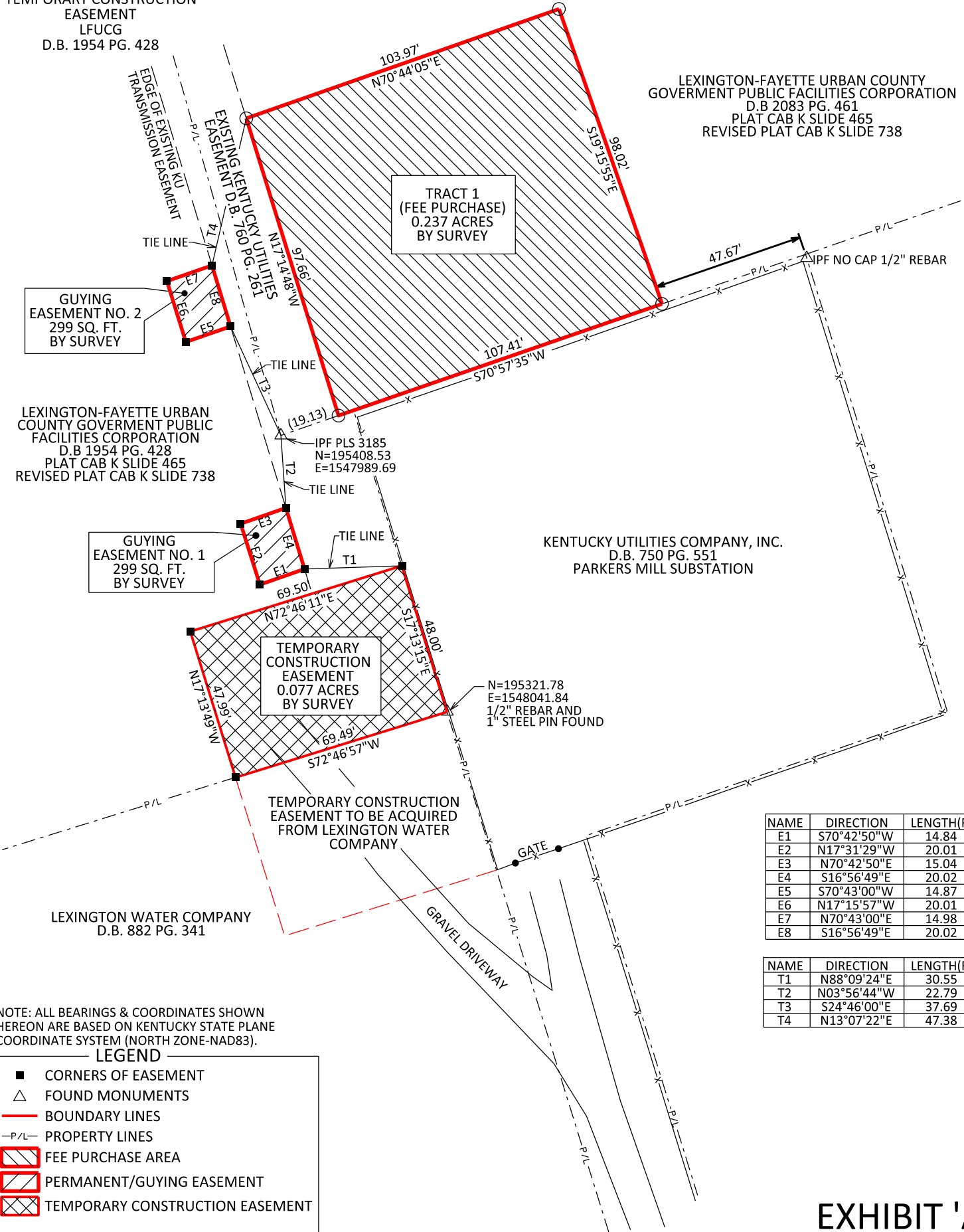


**SOURCE OF TITLE**

- TRACT 1  
LFUCG  
D.B. 2083 PG. 461
- GUYING EASEMENT NO. 1 & 2  
LFUCG  
D.B. 1954, PG. 428
- TEMPORARY CONSTRUCTION EASEMENT  
LFUCG  
D.B. 1954 PG. 428

**-NOT FOR LAND TRANSFER OR RECORDING-**

LEXINGTON-FAYETTE URBAN COUNTY  
GOVERNMENT PUBLIC FACILITIES CORPORATION  
D.B. 2083 PG. 461  
PLAT CAB K SLIDE 465  
REVISED PLAT CAB K SLIDE 738



LEXINGTON-FAYETTE URBAN COUNTY GOVERNMENT PUBLIC FACILITIES CORPORATION  
D.B. 1954 PG. 428  
PLAT CAB K SLIDE 465  
REVISED PLAT CAB K SLIDE 738

NAME	DIRECTION	LENGTH(FT)
E1	S70°42'50"W	14.84
E2	N17°31'29"W	20.01
E3	N70°42'50"E	15.04
E4	S16°56'49"E	20.02
E5	S70°43'00"W	14.87
E6	N17°15'57"W	20.01
E7	N70°43'00"E	14.98
E8	S16°56'49"E	20.02

NAME	DIRECTION	LENGTH(FT)
T1	N88°09'24"E	30.55
T2	N03°56'44"W	22.79
T3	S24°46'00"E	37.69
T4	N13°07'22"E	47.38

NOTE: ALL BEARINGS & COORDINATES SHOWN HEREON ARE BASED ON KENTUCKY STATE PLANE COORDINATE SYSTEM (NORTH ZONE-NAD83).

**LEGEND**

- CORNERS OF EASEMENT
- △ FOUND MONUMENTS
- BOUNDARY LINES
- P/L- PROPERTY LINES
- ▨ FEE PURCHASE AREA
- ▧ PERMANENT/GUYING EASEMENT
- ▩ TEMPORARY CONSTRUCTION EASEMENT

**EXHIBIT 'A'**



P.O. BOX 204  
165 FOSTER LANE  
STANFORD, KY 40484  
PHONE (606) 365-8362  
FAX (606) 365-1097

**BOUNDARY & EASEMENT DRAWING**  
**LEXINGTON-FAYETTE URBAN COUNTY GOVERNMENT**

PARKERS MILL RD  
LEXINGTON, FAYETTE COUNTY, KENTUCKY

DATE: 08-12-2015  
SCALE: 1" = 40'  
DRAWN BY: MS  
APPROVED BY: GOOCH  
FILENAME: 15075 LFUCG EASE