

Lexington-Fayette County NAACP Branch  
Unit 3097

## Mission

The mission of the National Association for the Advancement of Colored People is to ensure the political, educational, social, and economic equality of rights of all persons and to eliminate race-based discrimination.

### Vision Statement

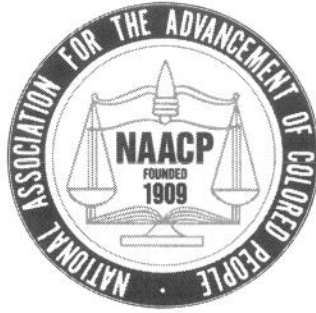
The vision of the National Association for the Advancement of Colored People is to ensure a society in which all individuals have equal rights without discrimination based on race.

### Objectives

The principal objectives for the Lexington-Fayette County area:

- To ensure the political, educational, social, and economic equality of all citizens
- To achieve equality of rights and eliminate race prejudices among the citizens
- To remove all barriers of racial discrimination through democratic processes
- To seek enactment and enforcement of federal, state, and local laws securing civil rights
- To inform the public of the adverse effects of racial discrimination and to seek its elimination
- To educate persons as to their constitutional rights and to take all lawful action to secure the exercise thereof, and to take any other lawful action in furtherance of these objectives, consistent with the NAACP's Articles of Incorporation and Constitution.

LEXINGTON-FAYETTE COUNTY BRANCH - P.O. BOX 13655 - LEXINGTON, KY 40583  
498 GEORGETOWN STREET - LEXINGTON, KY 40508  
(859) 252-7336 [lexingtonbranchnaacp@yahoo.com](mailto:lexingtonbranchnaacp@yahoo.com)



Lexington-Fayette County NAACP Branch  
Unit 3097

### **Members of the Executive Committee**

<b>President</b>	<b>Flora D. Mitchell</b>
<b>First Vice President</b>	<b>Tracy Curtis</b>
<b>Treasurer</b>	
<b>Secretary</b>	<b>Charles Duke</b>
<b>Education Committee Chair</b>	<b>Shambra Mulder</b>
<b>Fundraising Committee Chair</b>	<b>Charity Hocker</b>
<b>Health Committee Chair</b>	<b>Ashley Grigsby</b>
<b>Housing Committee Chair</b>	<b>Lillian Gentry</b>
<b>Legal Redress Chair</b>	<b>Jesse Crenshaw</b>
<b>Membership Committee Chair</b>	<b>Sherman Greene</b>
<b>Political Action Chair</b>	<b>Roger Holsey</b>
<b>Voter Registration Committee Chair</b>	<b>Mary Jo Black</b>

LEXINGTON-FAYETTE COUNTY BRANCH – P.O. BOX 13655 - LEXINGTON, KY 40583  
498 GEORGETOWN STREET - LEXINGTON, KY 40508  
(859) 252-7336 [lexingtonbranchnaacp@yahoo.com](mailto:lexingtonbranchnaacp@yahoo.com)

2012 Lexington-Fayette NAACP Branch  
Anticipated Budget

Calendar Year: 2012

		Monthly	Annual
Cash Carryover, 1/1/12	\$ 6,694.63		
Membership (50)	\$ 595.00	\$ 49.58	
Donations	\$ 600.00	\$ 50.00	
Fundraisers	\$ 2,000.00		\$ 2,000.00
<b>Total Income</b>	<b>\$ 3,195.00</b>	<b>\$ 99.58</b>	<b>\$ 2,000.00</b>

Lease	\$ 6,550.32	\$ 545.86	
Insurance	\$ 415.00	\$ 34.58	
Telephone	\$ 900.00	\$ 75.00	
Office equipment maint	\$ 100.00	\$ 8.33	
Supplies	\$ 250.00	\$ 20.83	
P O Box	\$ 60.00		\$ 60.00
Postage	\$ 160.00	\$ 13.33	
Benevolence	\$ 105.00	\$ 8.75	
State Assessment	\$ 250.00		\$ 250.00
Regional Conference	\$ 500.00		\$ 500.00
State Conference	\$ 400.00		\$ 400.00

Note: National Assessment is based on prior year net proceeds and membership status

National Assessment	\$ 2,073.37		\$ 2,073.37
Bank Charges/Checks	\$ 120.00	\$ 10.00	
Advertisement	\$ 300.00	\$ 25.00	
Community Outreach	\$ 500.00	\$ 41.67	
Mission Programs	\$ 600.00	\$ 50.00	
Youth Chapter	\$ 300.00		\$ 300.00
Miscellaneous	\$ 200.00	\$ 16.67	
Fundraiser	\$ 300.00		\$ 300.00
<b>Total Expenses</b>	<b>\$ 14,083.69</b>	<b>\$ 850.03</b>	<b>\$ 3,883.37</b>

Unbudgeted/Unbalanced \$ (4,194.06)

Additional fundraising will be necessary to cover lease payment

**CASH FLOW STATEMENT**

Cash Flow, Beginning		\$	6,694.63
Monthly Expenses	\$ 850.03		
Monthly Intake	\$ 99.58		
Cash Flow (Outflow)	\$ (750.44)	\$	(9,005.32)
Annual Expense		\$	3,883.37
Annual Intake		\$	2,000.00
Cash Flow (Outflow)		\$ (1,883.37)	\$ (1,883.37)
Cash Flow, Ending		\$	(4,194.06)



Lexington-Fayette County NAACP Branch  
Unit 3097

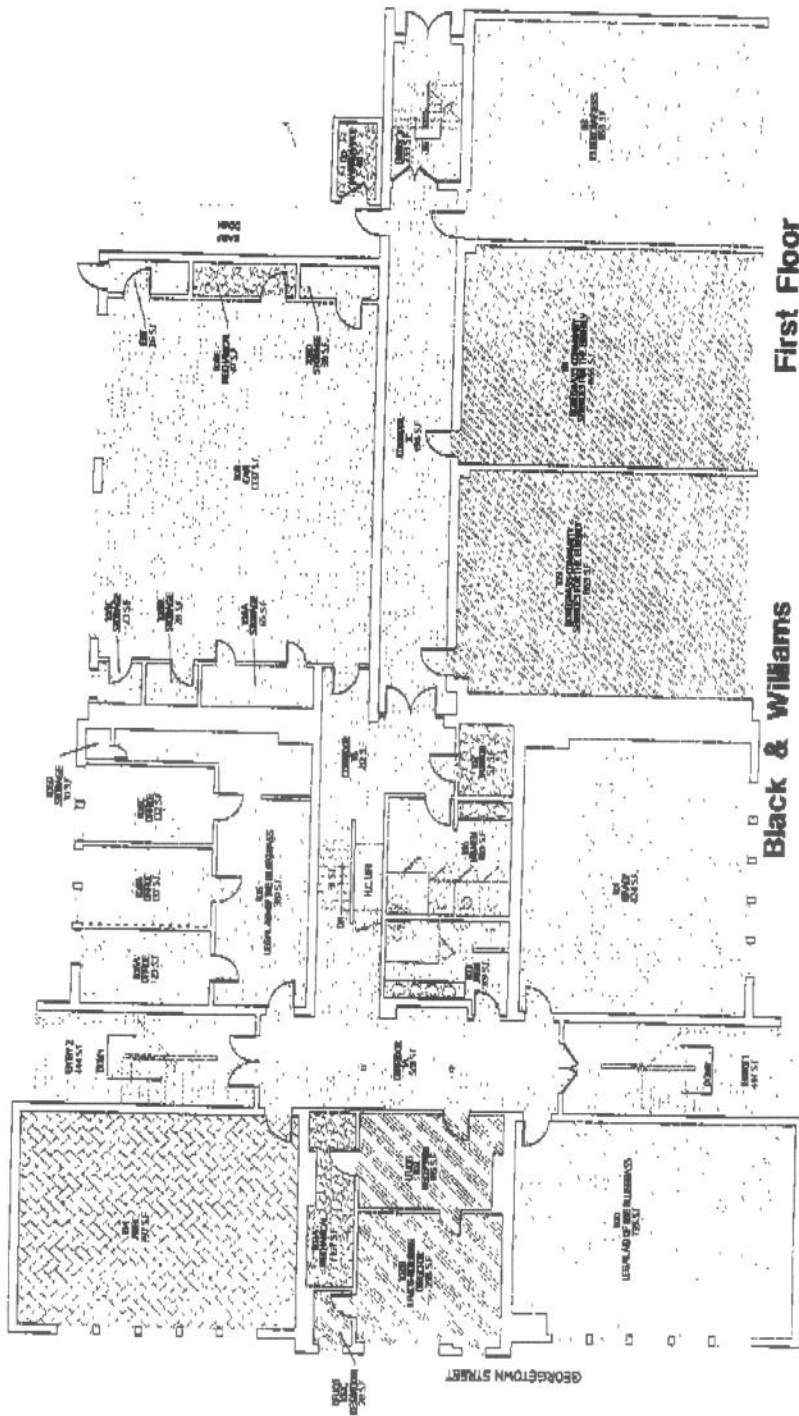
### **Space Need Analysis**

Our current 824 ft<sup>2</sup> in room 101 of the Black and Williams Neighborhood Center is enough space to meet our needs. This space and location allows us to meet our mission programming, community outreach, and operational activity needs.

We have between one and three people working in the office each day. Lexington-Fayette County residents call or come in to express their frustrations and seek help and direction in addressing inequality of rights and race-based discrimination. We also facilitate voter registration, do phone banking, and hold our planning and monthly meetings in our office.

The location of the office is on the bus line and is accessible to people with disabilities, which allows our branch president, elderly members, and the community access to our office.

LEXINGTON-FAYETTE COUNTY BRANCH – P.O. BOX 13655 - LEXINGTON, KY 40583  
498 GEORGETOWN STREET – LEXINGTON, KY 40508  
(859) 252-7336 [lexingtonbranchnaACP@yahoo.com](mailto:lexingtonbranchnaACP@yahoo.com)



First Floor

Black & Williams

COLOR	TENANT	AREA
[Cross-hatch pattern]	BLACK & WILLIAMS	1729 SF
[Dotted pattern]	BLACK & WILLIAMS	1024 SF
[Diagonal lines /]	BLACK & WILLIAMS	1024 SF
[Diagonal lines \]	BLACK & WILLIAMS	1024 SF
[Horizontal lines]	BLACK & WILLIAMS	1024 SF
[Vertical lines]	BLACK & WILLIAMS	1024 SF
[Stippled pattern]	BLACK & WILLIAMS	1024 SF
[Blank]	BLACK & WILLIAMS	1024 SF
[Blank]	BLACK & WILLIAMS	1024 SF

Form **W-9**  
(Rev. January 2011)  
Department of the Treasury  
Internal Revenue Service

### Request for Taxpayer Identification Number and Certification

Give Form to the  
requester. Do not  
send to the IRS.

Print or type  
See Specific Instructions on page 2

Name (as shown on your income tax return)

**Lexington-Fayette County NAACP Branch**

Business name/disregarded entity name, if different from above

**National Association for the Advancement of Colored People**

Check appropriate box for federal tax

classification (required):  Individual/sole proprietor  C Corporation  S Corporation  Partnership  Trust/estate

Limited liability company. Enter the tax classification (C=O corporation, S=S corporation, P=partnership) >

Exempt payee

Other (see instructions) P

**501(C) (4) Organization**

Address (number, street, and apt. or suite no.)

**498 Georgetown Street**

City, state, and ZIP code

**Lexington, KY 40504**

List account number(s) here (optional)

Requester's name and address (optional)

#### Part I Taxpayer Identification Number (TIN)

Enter your TIN in the appropriate box. The TIN provided must match the name given on the "Name" line to avoid backup withholding. For individuals, this is your social security number (SSN). However, for a resident alien, sole proprietor, or disregarded entity, see the Part I instructions on page 3. For other entities, it is your employer identification number (EIN). If you do not have a number, see *How to get a TIN* on page 3.

Social security number

--	--	--	--	--	--	--	--	--	--

Note. If the account is in more than one name, see the chart on page 4 for guidelines on whose number to enter.

Employer identification number

6	1	-	6	0	5	2	6	0	4
---	---	---	---	---	---	---	---	---	---

#### Part II Certification

Under penalties of perjury, I certify that:

- The number shown on this form is my correct taxpayer identification number (or I am waiting for a number to be issued to me), and
- I am not subject to backup withholding because: (a) I am exempt from backup withholding, or (b) I have not been notified by the Internal Revenue Service (IRS) that I am subject to backup withholding as a result of a failure to report all interest or dividends, or (c) the IRS has notified me that I am no longer subject to backup withholding, and
- I am a U.S. citizen or other U.S. person (defined below).

**Certification instructions.** You must cross out item 2 above if you have been notified by the IRS that you are currently subject to backup withholding because you have failed to report all interest and dividends on your tax return. For real estate transactions, item 2 does not apply. For mortgage interest paid, acquisition or abandonment of secured property, cancellation of debt, contributions to an individual retirement arrangement (IRA), and generally, payments other than interest and dividends, you are not required to sign the certification, but you must provide your correct TIN. See the instructions on page 4.

Sign Here

Signature of U.S. person

*F. Gerald Mitchell*

Date >

#### General Instructions

Section references are to the Internal Revenue Code unless otherwise noted.

#### Purpose of Form

A person who is required to file an information return with the IRS must obtain your correct taxpayer identification number (TIN) to report, for example, income paid to you, real estate transactions, mortgage interest you paid, acquisition or abandonment of secured property, cancellation of debt, or contributions you made to an IRA.

Use Form W-9 only if you are a U.S. person (including a resident alien), to provide your correct TIN to the person requesting it (the requester) and, when applicable, to:

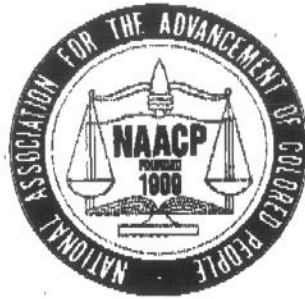
- Certify that the TIN you are giving is correct (or you are waiting for a number to be issued).
- Certify that you are not subject to backup withholding, or
- Claim exemption from backup withholding if you are a U.S. exempt payee. If applicable, you are also certifying that as a U.S. person, your allocable share of any partnership income from a U.S. trade or business is not subject to the withholding tax on foreign partners' share of effectively connected income.

Note. If a requester gives you a form other than Form W-9 to request your TIN, you must use the requester's form if it is substantially similar to this Form W-9.

**Definition of a U.S. person.** For federal tax purposes, you are considered a U.S. person if you are:

- An individual who is a U.S. citizen or U.S. resident alien,
- A partnership, corporation, company, or association created or organized in the United States or under the laws of the United States,
- An estate (other than a foreign estate), or
- A domestic trust (as defined in Regulations section 301.7701-7).

**Special rules for partnerships.** Partnerships that conduct a trade or business in the United States are generally required to pay a withholding tax on any foreign partners' share of income from such business. Further, in certain cases where a Form W-9 has not been received, a partnership is required to presume that a partner is a foreign person, and pay the withholding tax. Therefore, if you are a U.S. person that is a partner in a partnership conducting a trade or business in the United States, provide Form W-9 to the partnership to establish your U.S. status and avoid withholding on your share of partnership income.



Lexington-Fayette County NAACP Branch

Dear Lexington-Fayette Urban County Council,

We, the NAACP, are asking for less than full rent because it would allow us to continue serving the residents of Lexington-Fayette County. We receive no funding from federal, state, or local government; nor do we finance our operations with loans. Private donations, fundraising, and the rent free space in the Black & Williams Neighborhood Center allow, and have allowed, us to meet our mission programming, community outreach, assessments, and pre-lease operational expenses.

The National Association for the Advancement of Colored People, NAACP, is a non-profit 501 (c) (4) agency with the mission to ensure the political, educational, social, and economic equality of rights of all persons and to eliminate race-based discrimination. Our Branch focuses specifically and serves 100% of the population in Lexington-Fayette County. However, many of those we serve are lower income, students, losing their jobs, or in prison.

We have been residents of the center for 30 years. We are currently in room 101 of the Black and Williams Neighborhood Center. It is enough space to meet our needs. The location of the office is on the bus line and is accessible to people with disabilities, which allows our branch president, elderly members, and the community access to our office.

Lexington-Fayette County residents call or come in to express their frustrations and seek help and direction in addressing inequality of rights and race-based discrimination. We listen to and refer individuals to the appropriate agencies and institutions for resolution of issues. We facilitate employment, give parental support for school equity concerns, and are a community liaison for public concerns, organize and do community outreach by educating citizens through seminars and public events. We also facilitate voter registration, do phone banking, and hold our planning and monthly meetings in our office.

The NAACP objectives for the Lexington-Fayette County area are to ensure the political, educational, social, and economic equality of all citizens; to achieve equality of rights and eliminate race prejudices among the citizens; to remove all barriers of racial discrimination through democratic processes; to seek enactment and enforcement of federal, state, and local laws securing civil rights; to inform the public of the adverse effects of racial discrimination and to seek its elimination; to educate persons as to their constitutional rights and to take all lawful action to secure the exercise thereof, and to take any other lawful action in furtherance of these objectives, consistent with the NAACP's Articles of Incorporation and Constitution.

Please continue to help us until ensuring a society in which all individuals have equal rights without discrimination based on race is not just a vision.

*Flara D. Mitchell, President*

LEXINGTON-FAYETTE COUNTY BRANCH - P.O. BOX 13655 - LEXINGTON, KY 40583

498 GEORGETOWN STREET - LEXINGTON, KY 40508

(859) 252-7336 lexingtonbranchnaacp@yahoo.com