

PARKS AND RECREATION MASTER PLAN STATUS UPDATE

Council Work Session

January 23, 2018



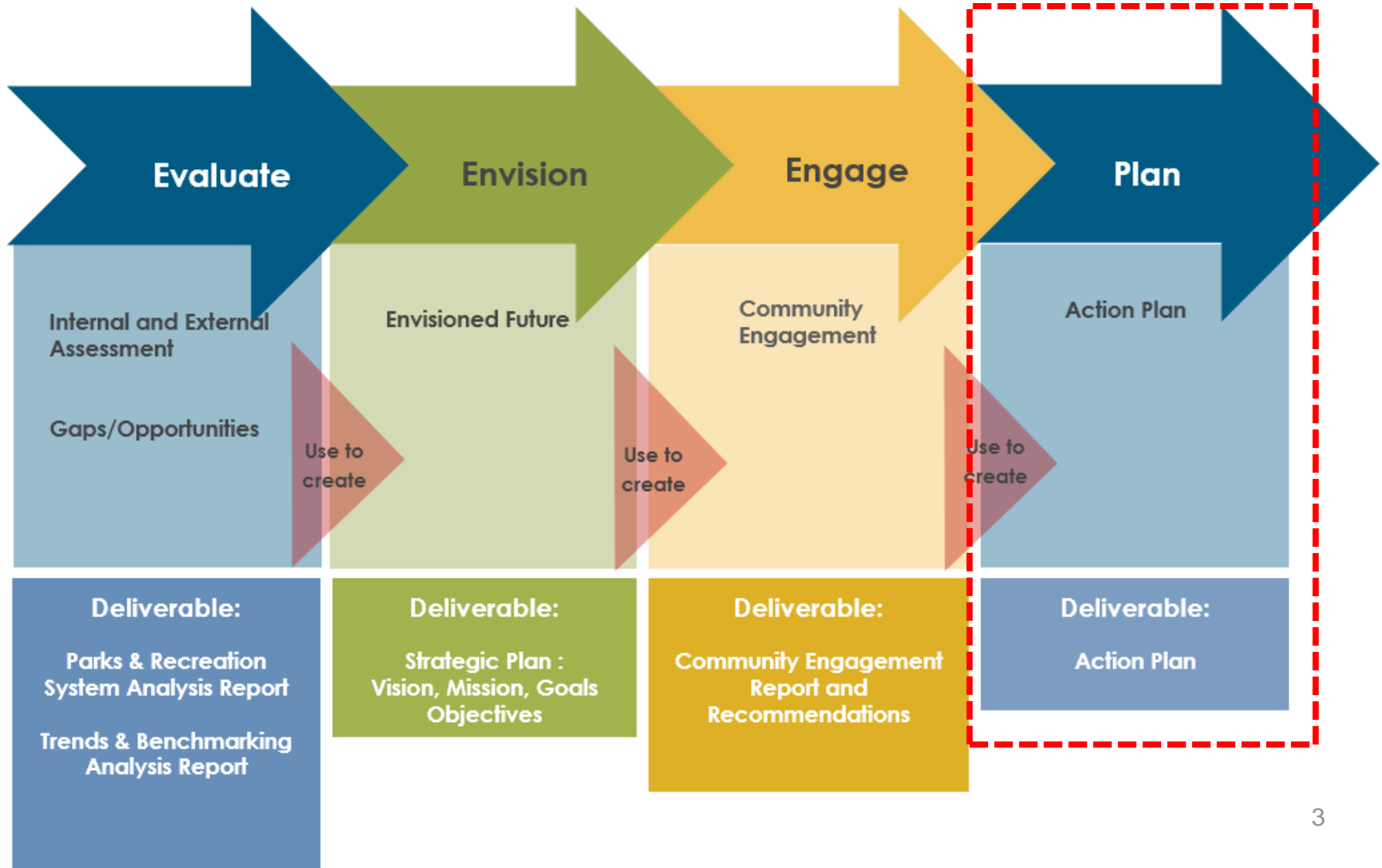
LEXINGTON



Master Plan Outcomes

- Identifies where, why, and how services could be improved
- Focuses on the next ten years
- Establishes recommendations:
 - Expand upon efficiencies
 - Operations
 - Use of space
 - Safe Environments
 - Vibrant Programming
- Long-term strategies for Park System development

Planning Process



Social Needs & Conditions Analysis[®]

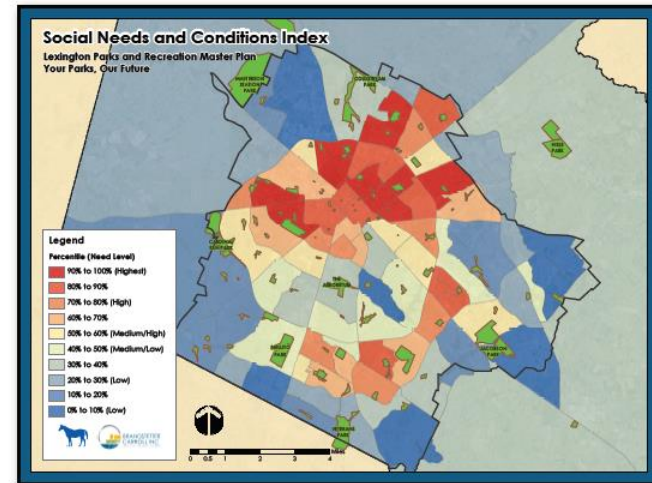
Social Needs Factors

- Household Income
- Education Level
- Unemployment
- Single Parent Households
- Crime
- Residents Under Age 18
- Residents Age 65 or Over
- Residents with Disabilities
- Poverty (x2)
- Population Density (x2)

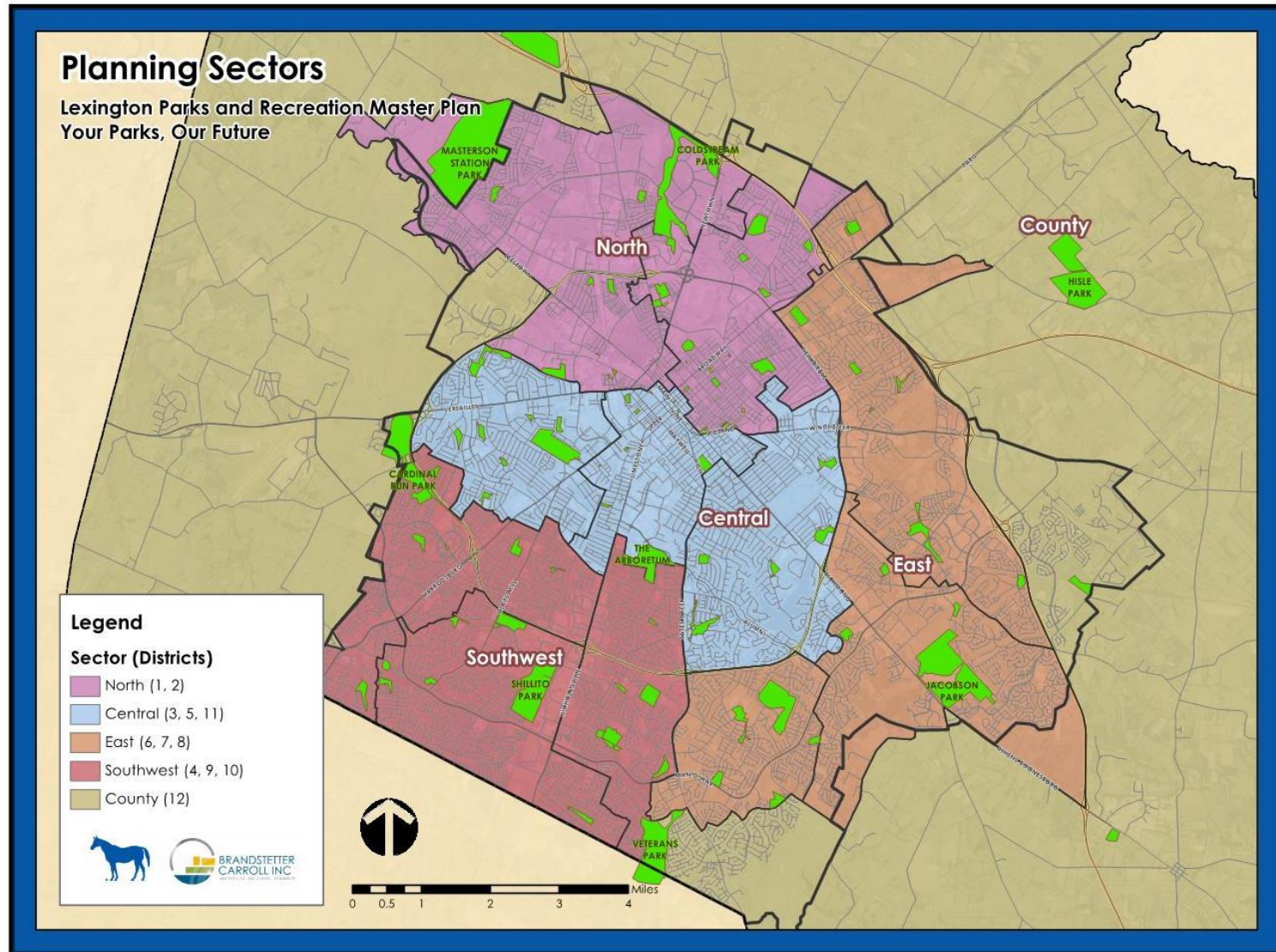
Composite Social Needs Index

Social Needs Weighted and Scored by Census Tract

Percentile Mapping



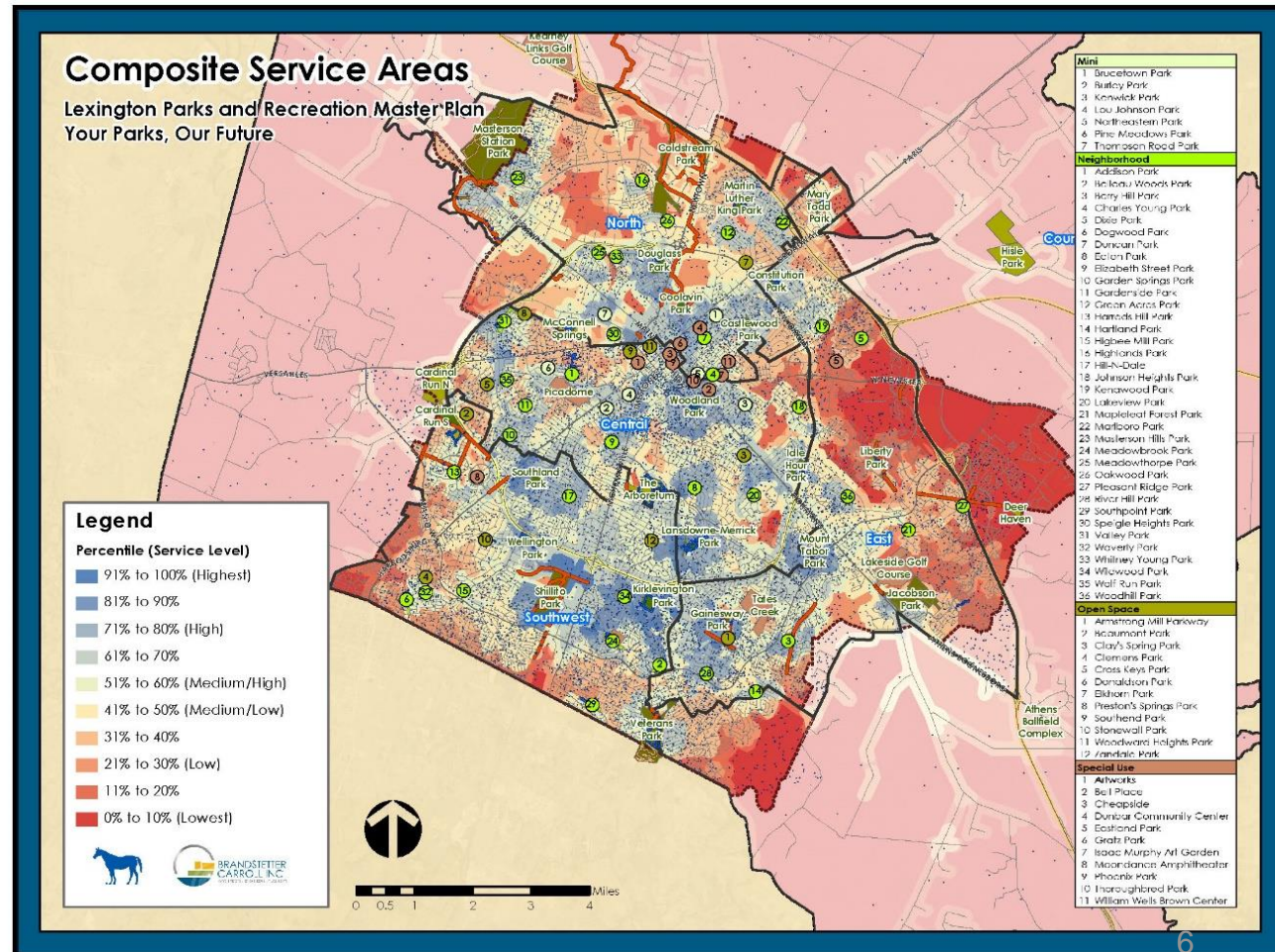
Planning Sectors





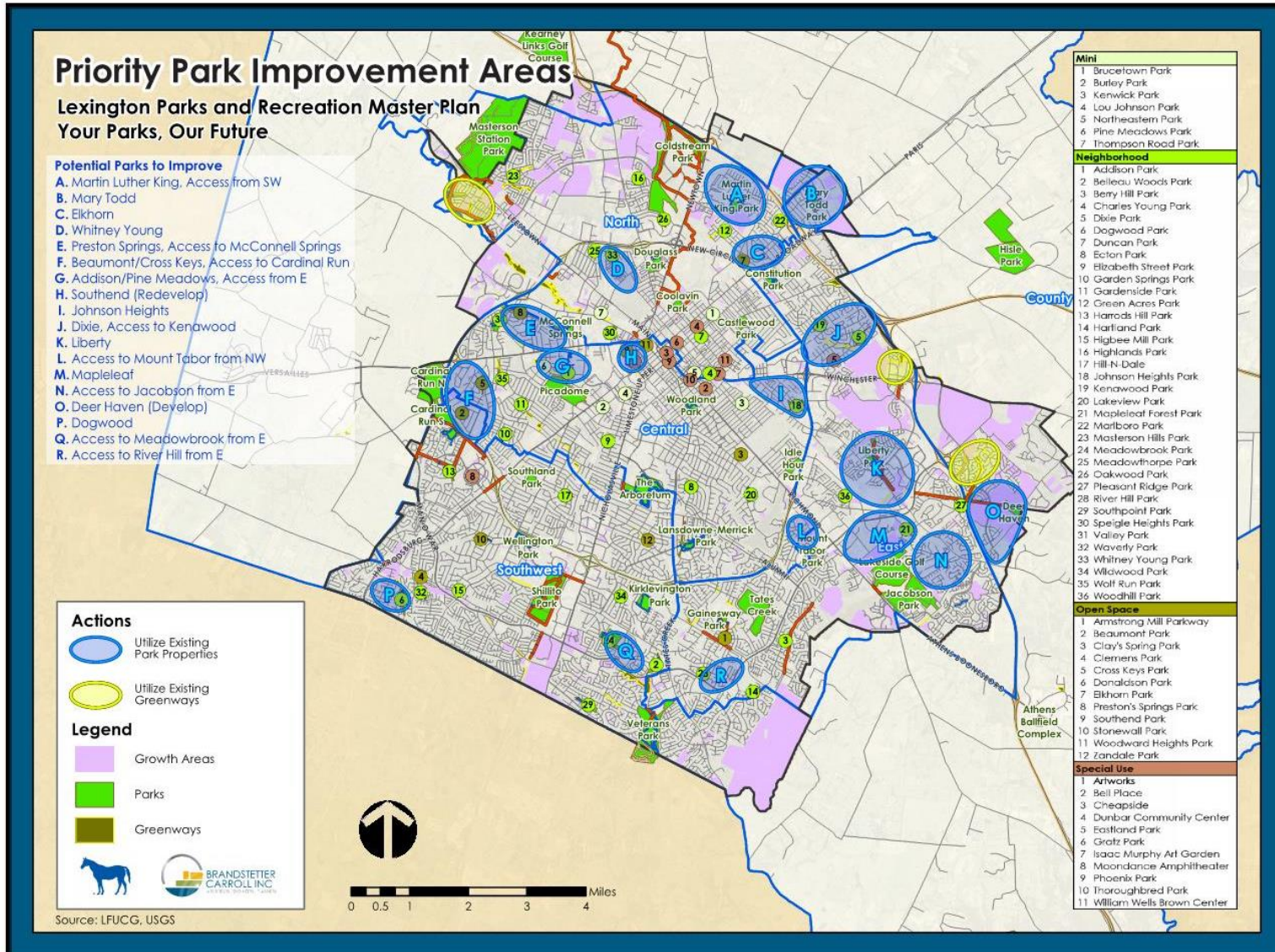
Composite Service Areas

- Community/Regional Parks
- Neighborhood Parks
- Trails
- Playgrounds
- Picnic Shelters
- Basketball Courts
- Tennis Courts
- Ball Diamonds
- Rectangular Fields
- Aquatic Facilities
- Disc Golf Courses
- Dog Parks
- Skate Parks
- Community Centers
- Senior Center



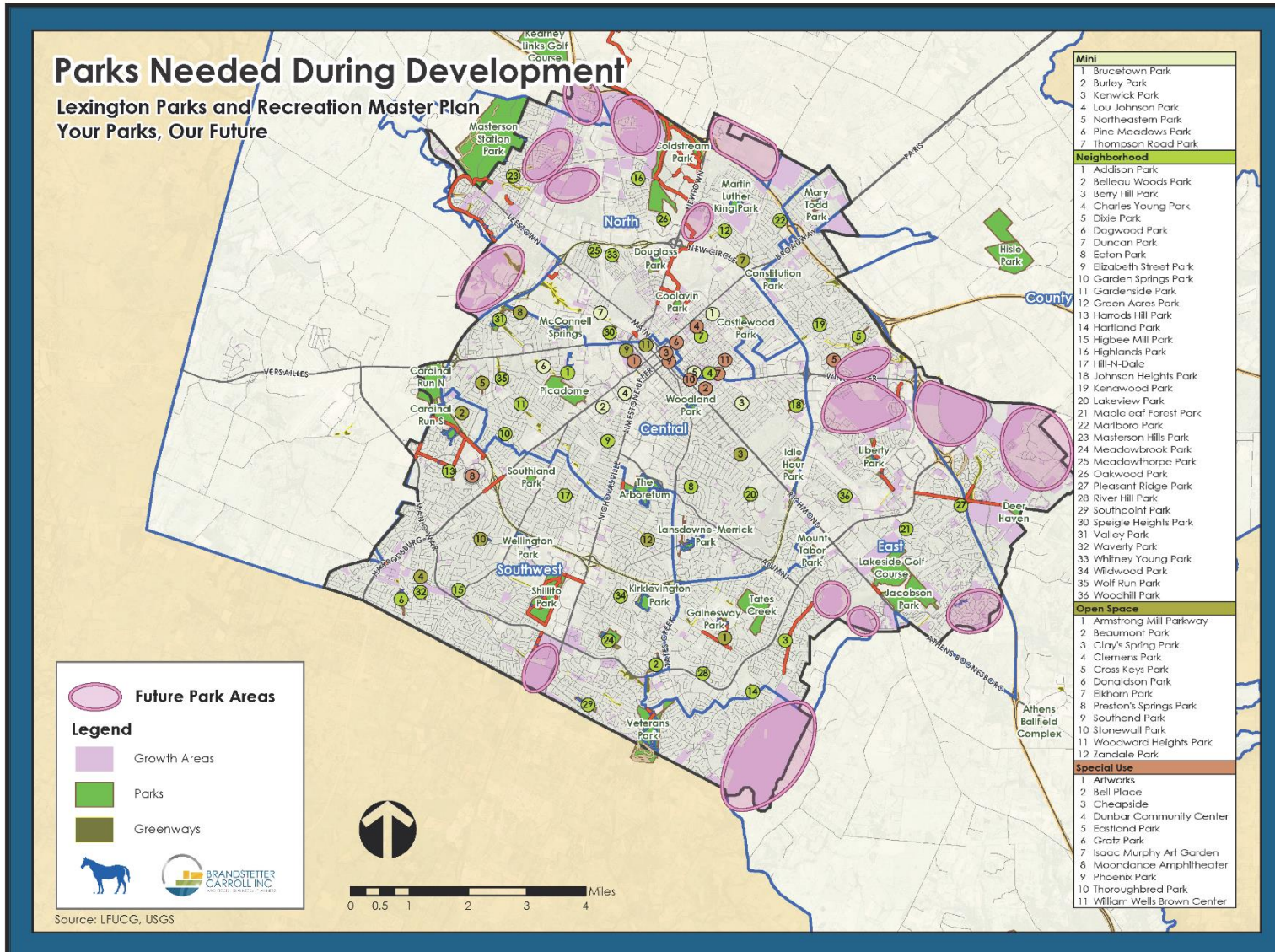


Priority Park Improvement Areas





Parks Needed During Development



Results

Vision

*Inspiring individuals to
imagine and pursue greatness*

Mission

*Build community and enrich life
through parks, programs and
play*

Values

*Community - Stewardship -
Inclusion - Collaboration -
Innovation*



Goals



Great Spaces

Connect people in a variety of environments through parks and spaces



Great Experiences

Promote health, wellness and experiences for our growing population through programs and events



Great Stewardship

Value Lexington's resources through preservation, education and sustainable management practices



Great Engagement

Engage members of the community in planning and promoting quality parks and programs



Great Leadership

Assure that people, process and finances are managed efficiently and effectively

Community Engagement

Multiple Methods

- 4 Community Conversations
- 21 Special Interest Focus Groups
- 16 Community Events
- 952 Statistically Valid Mail Surveys
- 1,089 Your Parks, Our Future Survey
- Master Plan Website
- Online Engagement



Community Survey Results



FACILITIES

Top 5

Priorities for Improvement



Walking and Hiking Trails



Nature Parks



Neighborhood Parks



Bike Trails



Indoor Swimming Pool

PROGRAMS

Top 5

Priorities for Improvement



Adult Fitness and Wellness



Summer Concerts



Programs for Seniors (Age 50+)



Nature Programs



Pet Exercise (at Dog Parks)

ACTIONS

Top 3

Most Important Actions



Upgrade Current Parks



Build New Walking and Biking Trails



Buy Land for Future Parks



Recommendations

Great Spaces

- Prioritize improvements/renovation of existing facilities
- Improve accessibility of all facilities
- Obtain park land in areas of development
- Feasibility study of a Sports Complex and a Recreation Center
- Maximize potential of Golf Courses



Recommendations

Great Experiences

- Enhance use of existing spaces and facilities
- Connect parks, trails, schools, and neighborhoods
- Increase fitness and wellness opportunities
- Expand opportunities for community gathering (concerts, events, movies, etc.)
- Improve access to sports fields for open play



Recommendations

Great Stewardship

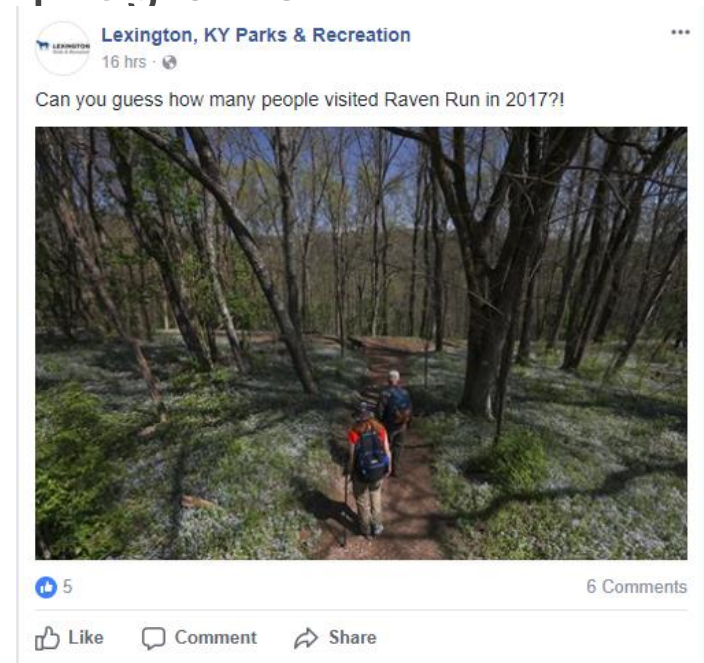
- Expand natural areas
- Increase nature programming
- Support the Urban Forestry Program



Recommendations

Great Engagement

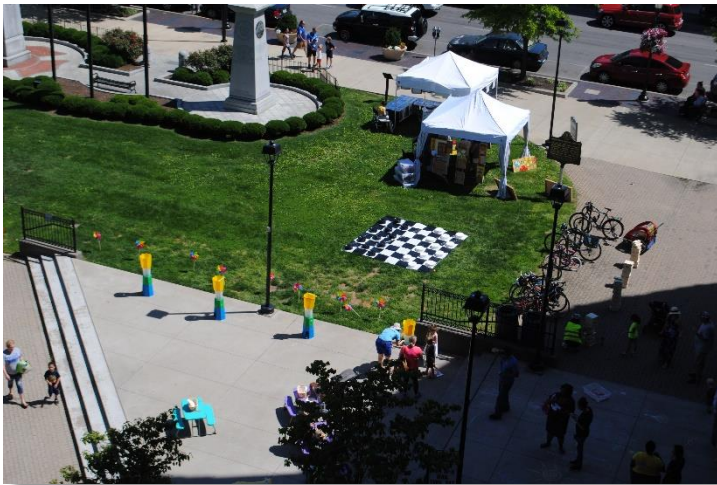
- Marketing expansion
- Advance technology
- Equitable system of parks and programs



Recommendations

Great Leadership

- Nurture partnerships for facilities, programs, and outreach
- Emphasize youth development and programming
- Increase cost recovery from 27% to 40%
- Complement other LFUCG planning efforts
- Invest in maintenance



Recommendation Examples

- Neighborhood Parks (2.5 to 15 developed acres; 10-minute walk area)

Park Name	Park Type	Priority	Improvement Type
Central (Districts 3, 5, and 11)	(District 11)		
Garden Springs	Neighborhood		
Walkway/Trail Improvements (Expansion/Resurfacing/Widening)		M	Upgrade
Field Evaluation for Multipurpose Use		M	Evaluation
½ Basketball Court Improvements (Replacement)		L	Replacement
Playground Expansion		L	Upgrade
Unique Neighborhood Driven Feature		L	New

Questions?

