



Office of
Chris Ford

1st District Councilman

MEMORANDUM

To: Richard Moloney, Environmental Quality & Public Works Commissioner

From: Chris Ford *Chris Ford*

Date: April 23, 2013

Cc: Geoff Reed, General Services Commissioner
Kevin Wentz, Dept. of Environmental Quality & Public Works
Joel Webber, Division of Traffic Engineering

RE: **Lewis Street Traffic Conversion**
On - Street Parking at the Charles Young Center & Park

I wish to propose the conversion of Lewis Street from 2 - way to one - way traffic (from East Third Street to Midland Avenue). In addition, I propose to designate on - street, pull - in parking along the western curbside of Lewis Street.

The initiation of this traffic pattern conversion will serve direct benefit to the on - street parking needs associated with access to the Charles Young Center and adjacent park. Currently, visiting vehicles primarily utilize the nearby Shropshire Boulevard extension as needed on - street parking. However, this stretch of Shropshire (from Midland to E. Third) is designated for bicycle lanes. As such, on - street parking restricts optimal 2 - way traffic flow, results in a congested thoroughfare, and potentially compromises pedestrian / cyclist safety in this area.

Conversely, the construction of the Shropshire Boulevard extension has made obsolete the optimal utility of Lewis Street, from a traffic flow and capacity perspective. The Division of Traffic Engineering projects an on - street parking conversion from parallel curbside to diagonal / pull - in parking will increase the number of parking spaces from 27 to 38 (approx. 41% increase). Pull - in parking will also be more convenient and attractive to visitors to the playground and park field area. (Please find enclosed an aerial view design of the proposed parking alignment).

Lastly, the proposed conversion will have limited impact on property owners along Lewis Street, as there are less than a handful of identified owners, including those of several vacant and unoccupied commercial properties.

Thanks for your consideration and support of this proposal. Furthermore, please find me committed to designate 1st District paving funds (approx. \$30,000) to facilitate the resurfacing and stripping requirements of this project.

Enclosure

200 East Main Street • Lexington, KY 40507 • (859) 258-3216
cford@lexingtonky.gov

Horse Capital of the World

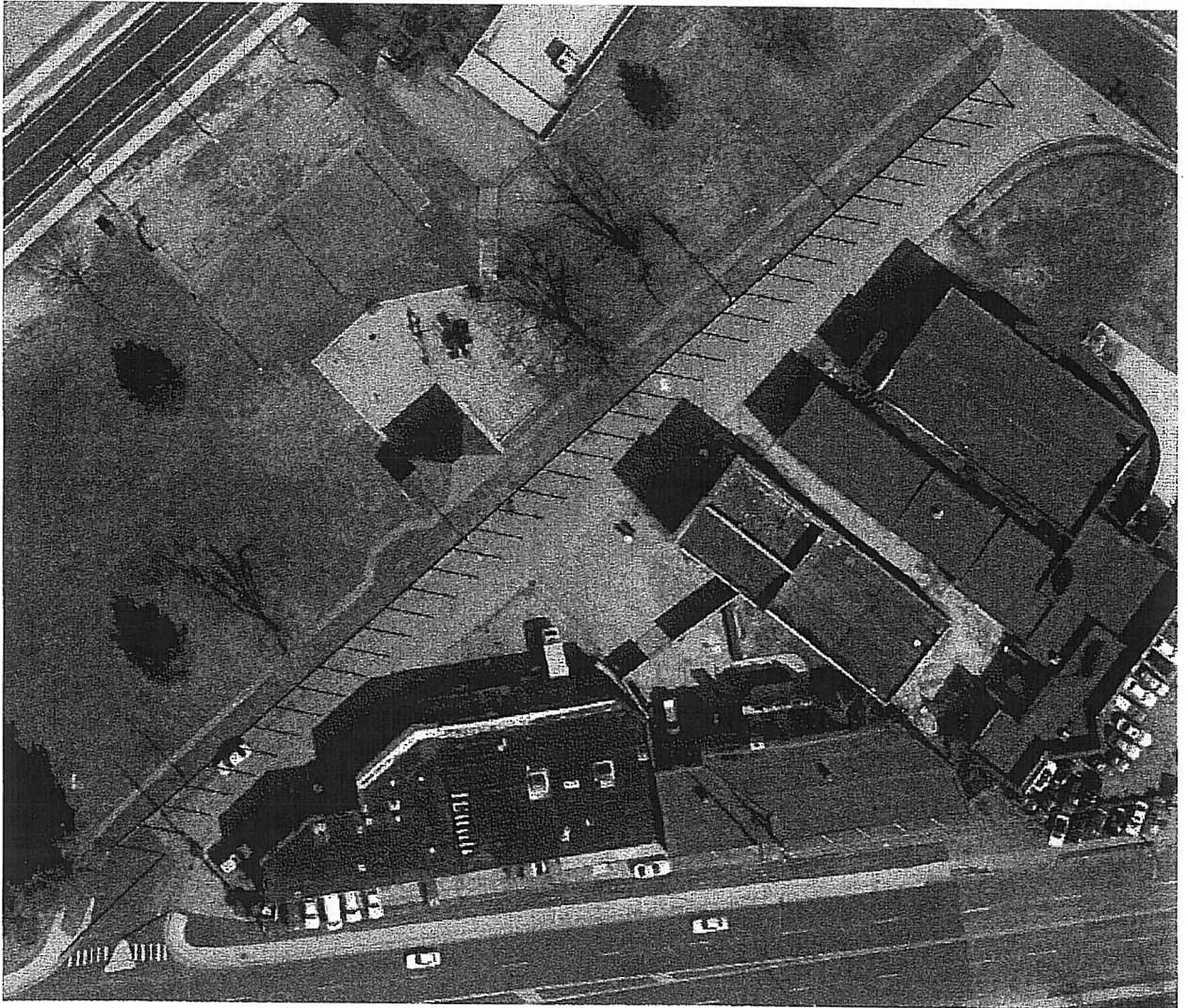
Lewis Street Traffic Conversion & Redesign

On - Street Parking at Charles Young Center / Park

Proposal to convert Lewis Street from 2 - way to one - way traffic
(from East Third Street to Midland Avenue)

Designation of on - street, pull - in parking along western curbside
(adjacent to Charles Young Center & Park)

- Objectives:**
- 1. Increase optimal number of on - street parking spaces**
 - 2. Create convenient & safer parking option**
 - 3. Reduce traffic congestion along Shropshire Extension**





WATROW

THIRD

LEWIS

SHROPSHIRE

MIDLAND