

Access Easement

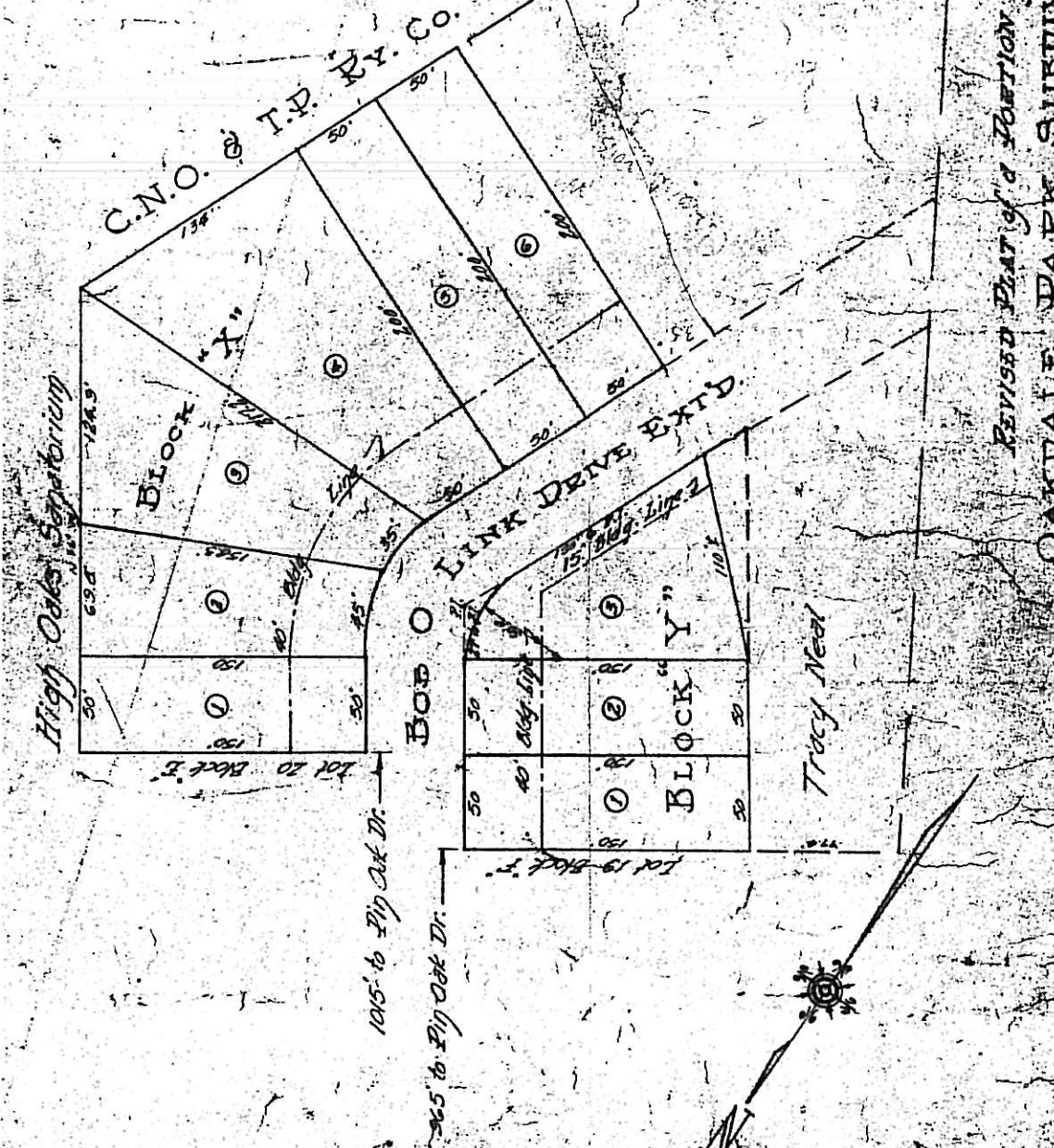
**345 Bob O Link Drive
Lexington, Fayette County, KY
Deed Book 846, Page 86**

Commencing at a iron pin with aluminum cap stamped "2020" at the southwest corner of Lot 2 of Block "Y" of the Oakdale Park Subdivision said point also being the southeast corner of Lot 3 of Block "Y" of the Oakdale Park Subdivision, of an unrecorded revised plat of a portion of Oakdale Park Subdivision, by Cecil C. Harp, Engineers, Exhibit "A"; thence along the rear property line of lot 3 S 48°28'37" E 109.64 feet more or less to an iron pin in the west right of way line of Bob O Link and the southeast property corner of lot 3 thence; S 65°22'00" E 15.50 feet more or less to a point, leaving The True Point of Beginning; thence S 65°22'00" E 12.03 feet more or less to a point; thence S 23°43'31" W 55.31 feet more or less to a point ; thence following a curve to the left with a chord bearing of S 09°43'30" W with a chord distance of 91.24 feet more or less, and a length of curve being 92.55 more or less feet and a radius of 158.5 feet to a point; thence S 77°35'58" W 12.05 more or less feet ; thence following a curve to the right with a chord bearing of N 04°25'16" W with a chord distance of 17.63 more or less feet, and a length of curve being 17.63 feet more or less and a radius of 170.5 feet to a point; thence N 33°52'25"W 14.50 more or less feet to a point; thence S 56°36'05" W 20.65 feet more or less to a point; thence N 34°01'25" W 45.04 feet more or less to a point; thence N 55°42'17" E 37.16 feet more or less ; thence following a curve to the right with a chord bearing of N 81°45'37" E with a chord distance of 23.39 feet more or less, and a length of curve being 24.07 feet more or less and a radius of 29 feet to a point; thence following a curve to the right with a chord bearing of N 43°06'28" E with a chord distance of 18.10 feet, more or less and a length of curve being 18.34 feet more or less and a radius of 33 feet to a point; thence N 23°41'07" E 60.15 feet more or less to the point of beginning; containing 4038 square feet more or less (0.093 acres).

Being a portion of the same property conveyed to Byron F. Jessup and Margaret H. Jessup, husband and wife, by deed dated September 30, 1965 of record in Deed Book 846, page 86 in the Fayette County Clerk's Office.

EXHIBIT A

NOT TO SCALE



REVISED PLAT of a PORTION of
OAKVALE PARK SUBDIVISION

Prepared by
Tracy Road
C. G. HILL



1801

400

401

396

362

360

358

345

354

BOB O LINK

355

353

351

349

