

REMOVE ROOF TOP SUPPLY FAN FOR BOILER ROOM, SEAL ROOF AND PROVIDE NEW FAN IN UNCLASSIFIED AREA

RELOCATE GAS FLUE VENTS TO UNCLASSIFIED AREA

CLASS 1, DIV.1 ABOVE THE ROOF UP TO 10 FT. ABOVE THE MAX. WATER LEVEL OF THE DIGESTER (APPROX. 926.00)

ROOF @ ELEV. 909.5

REMOVE SUPPLY FAN AND PATCH ROOF

HEAT RECOVERY UNIT ON ROOF

REMOVE GRAVITY INTAKE VENT FOR FIRST FLOOR COMPRESSOR ROOM AND PATCH ROOF

ROOF @ ELEV. 918.00

REMOVE GRAVITY VENTILATORS AND PATCH ROOF

REMOVE SUPPLY FAN AND PATCH ROOF

ROOF @ ELEV. 918.71

ROOF @ ELEV. 919.58

DIGESTER NO.3

RELOCATE GAS FLUE VENTS TO UNCLASSIFIED AREA

DIGESTER NO.2

RELOCATE GAS FLUE VENTS TO UNCLASSIFIED AREA

EXISTING SUPPLY FAN FOR MEZZANINE ~~REMOVE~~ TO REMAIN ~~REMOVE~~

REMOVE GRAVITY INTAKE VENT FOR BASEMENT GAS PIPING ROOM PATCH ROOF

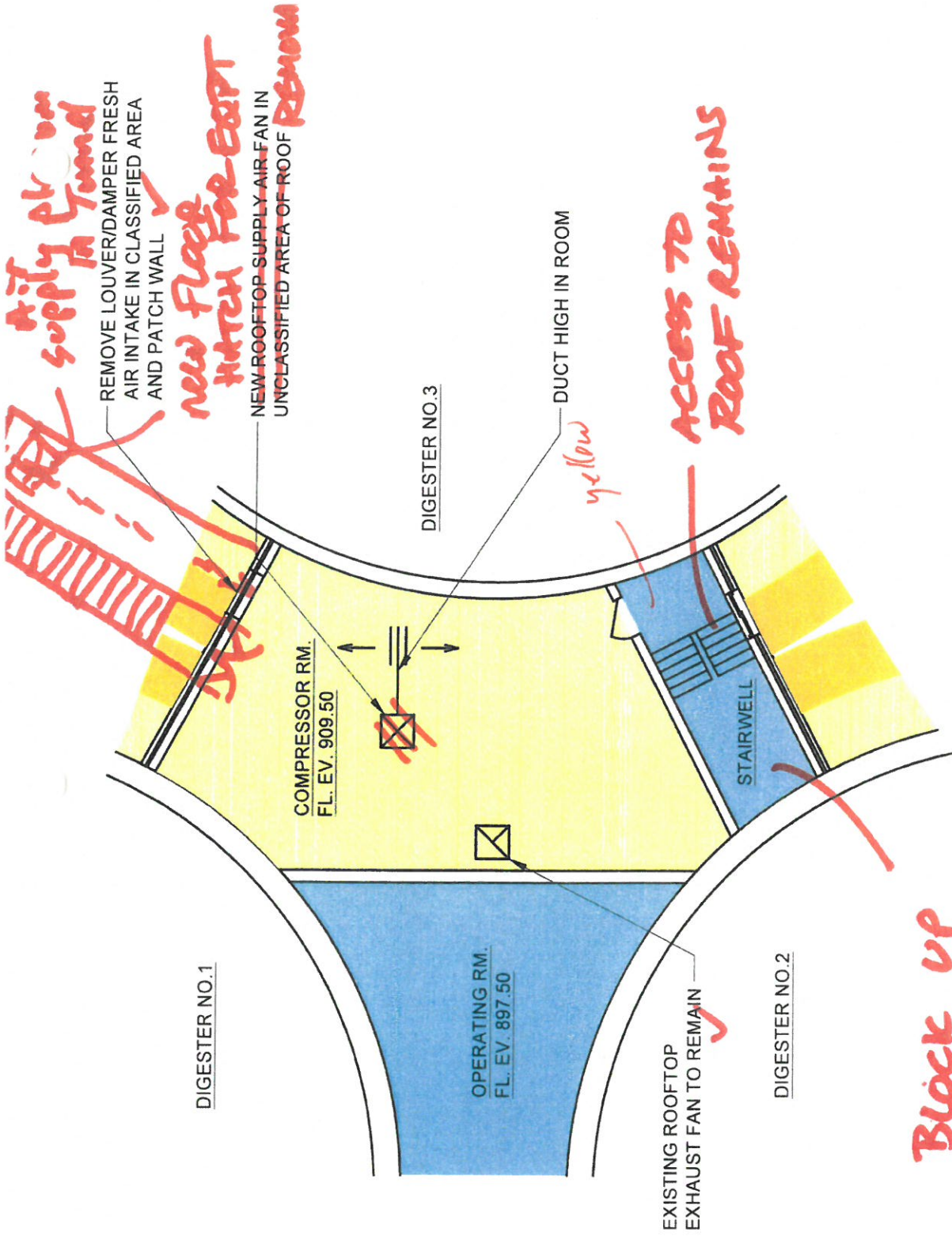
RELOCATE GAS FLUE VENTS TO UNCLASSIFIED AREA

**GAS HOLDER**

LEGEND	
	CLASS 1, DIV 1
	CLASS 1, DIV 2
	UNCLASSIFIED WHEN VENTILATED GAS

1 PLAN - DIGESTER CONTROL BUILDING ROOF

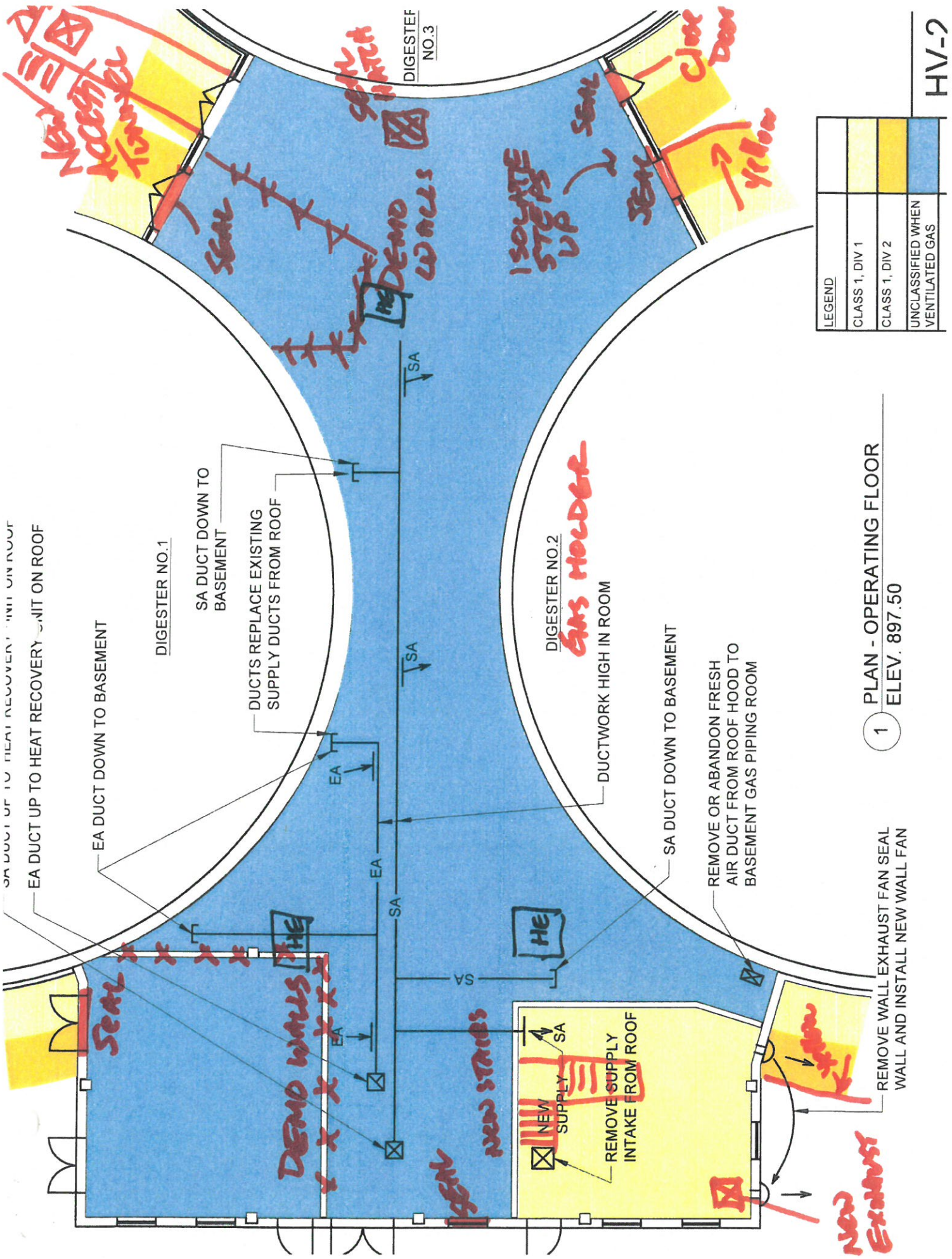
**New Exhaust**



LEGEND	
	CLASS 1, DIV 1
	CLASS 1, DIV 2
	UNCLASSIFIED WHEN VENTILATED GAS

**Block up STAIRWELL FLOOR TO SEPARATE SPACES**

1 PLAN - MEZZANINE FLOOR COMPRESSOR ROOM  
ELEV. 909.50



SA DUCT UP TO HEAT RECOVERY UNIT ON ROOF  
EA DUCT UP TO HEAT RECOVERY UNIT ON ROOF

EA DUCT DOWN TO BASEMENT

DIGESTER NO. 1

SA DUCT DOWN TO BASEMENT

DUCTS REPLACE EXISTING SUPPLY DUCTS FROM ROOF

EA

EA

EA

SA

SA

SA

SA

SA

SA

SA

SA

SA

SA

SA

DIGESTER NO. 2

Gas Holder

DUCTWORK HIGH IN ROOM

SA DUCT DOWN TO BASEMENT

REMOVE OR ABANDON FRESH AIR DUCT FROM ROOF HOOD TO BASEMENT GAS PIPING ROOM

REMOVE WALL EXHAUST FAN SEAL WALL AND INSTALL NEW WALL FAN

New Exhaust

New Accessible Transfer

Seal

DEMO WALLS

new stairs

new

DIGESTER NO. 3

Seal Hatch

Seal

ISOLATE STEPS UP

Seal

Seal

Seal

Seal

Seal

Seal

Seal

Seal

Seal

Seal

Seal

Seal

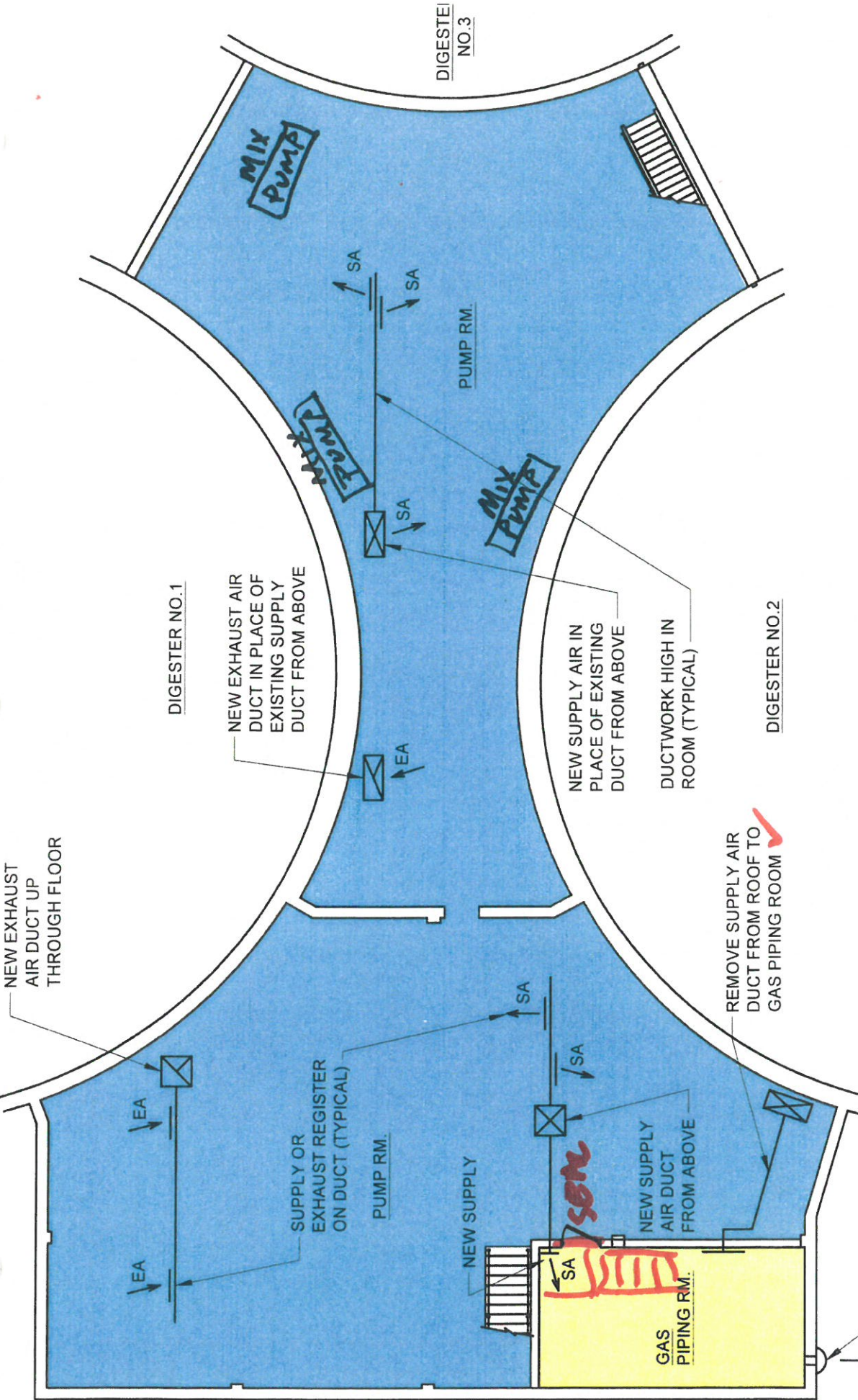
Seal

Seal

Seal

Seal

HV-2



LEGEND	
	CLASS 1, DIV 1
	CLASS 1, DIV 2
	UNCLASSIFIED WHEN VENTILATED GAS

1 PLAN - BASEMENT FLOOR  
ELEV. 886.00