

# Land Use and Watershed Management



Work Session  
November 11, 2014  
Charles H. Martin, P.E. – Division of Water Quality



# Presentation Topics

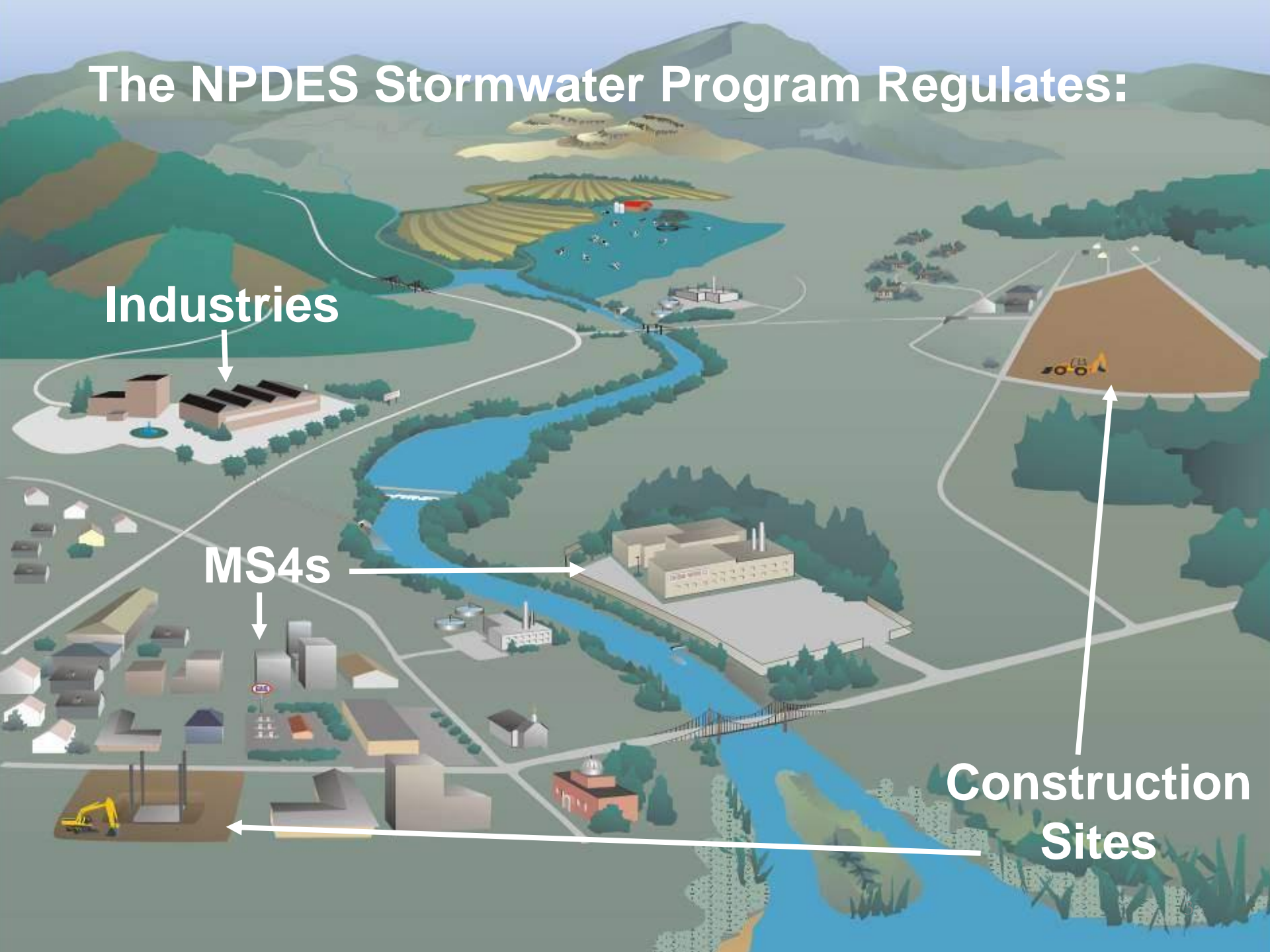
1. Stormwater's Impact on Streams
2. Status of LFUCG's MS4 Permit

# The NPDES Stormwater Program Regulates:

**Industries**

**MS4s**

**Construction Sites**



# Polluted runoff from urban areas



**Trash**



**Heavy Metals**



**Nutrients**



**Sediment**



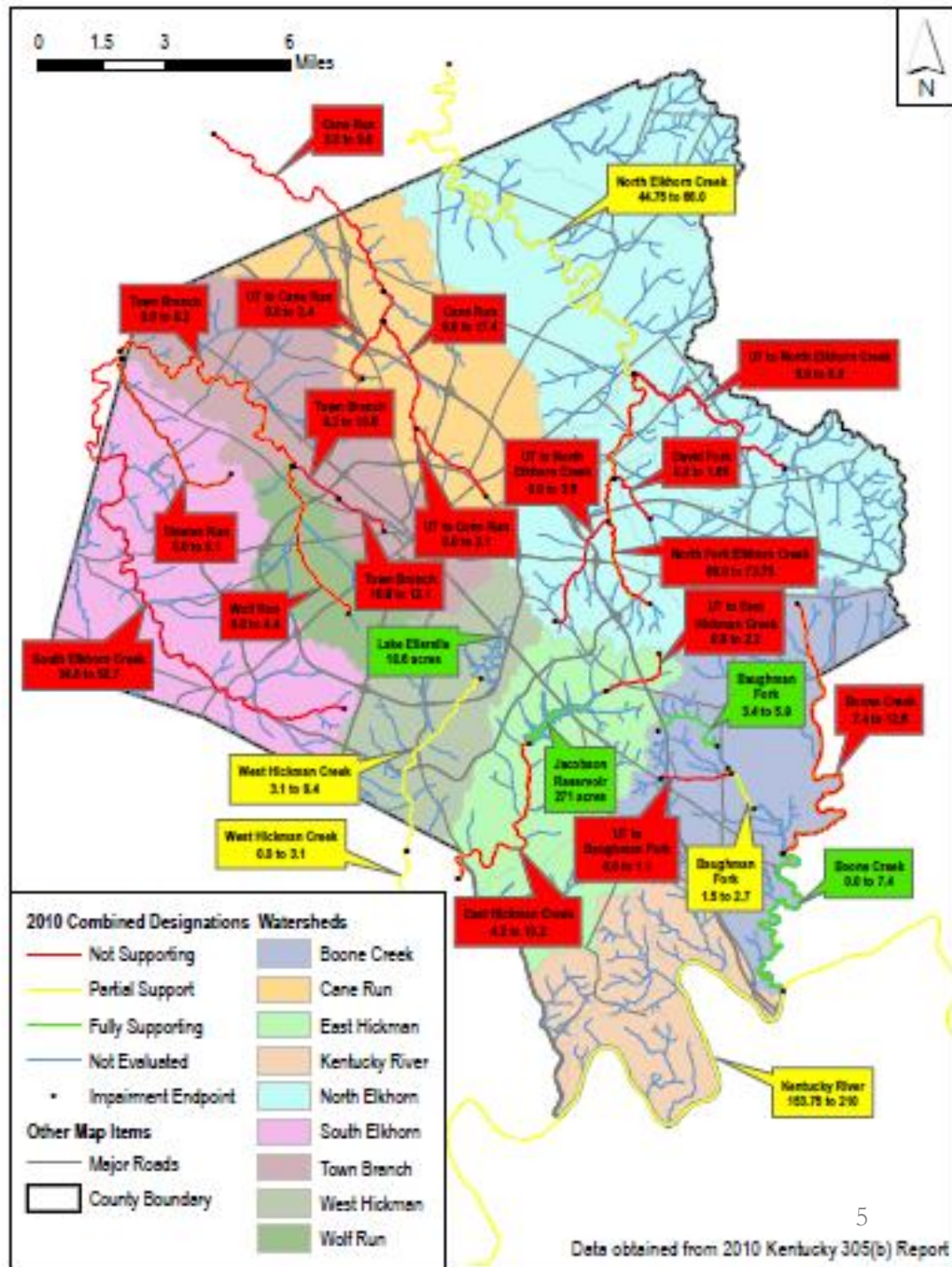
**Bacteria / Pathogens**



**Oil and Grease**



# Impact of Runoff on Streams in Fayette County



# Status of LFUCG's MS4 Permit

Current LFUCG MS4 Permit	September 1, 2009 to August 31, 2014
State Inspection of LFUCG	October 31, 2012
MS4 Permit Renewal Application Submitted	February 28, 2014
Draft MS4 Permit Issued	September 26, 2014
Public Comment Deadline	October 29, 2014
New LFUCG MS4 Permit Issued	??

# EPA's National Stormwater Rule

We anticipated that it would prescribe

- stormwater control standards for redevelopment
- requirements to “retain” runoff on new development using green infrastructure

We anticipated that it would

- be reflected in new permit
- impact the Engineering Manuals

**HOWEVER**

EPA abandoned this rulemaking pertaining to post-construction stormwater requirements in March 2014; and has shifted its focus to supporting communities through tools and incentives to strengthen local stormwater regulations and programs

## Highlights from the Draft Permit Relevant to the Council

- Annual training for the Council and Planning Commission continues
- Continue to enforce a program to address stormwater runoff from new development and redevelopment sites  $\geq 1$  acre
- For new development, manage runoff through water quality controls from the 80<sup>th</sup> percentile rainfall event



## Highlights from the Draft Permit Relevant to the Council (cont'd)

- Continue to enforce Section 16-85 which adopts the Stormwater Manual that contains the stormwater quality management requirements for new development and redevelopment
- Incorporate the LID Guidelines into the Stormwater Manual within 3 years
- Potential ordinance updates for the various permit program elements to be presented to Council for consideration

# Stormwater Stakeholder Advisory Committee

- Mission Statement – approved December 2010

*The Lexington-Fayette Urban County Government Stormwater Stakeholder Advisory Committee is a group of citizens representing a varied group of stakeholders in Fayette County whose mission is to assist LFUCG with attaining the goals of its stormwater program by:*

# Stormwater Stakeholder Advisory Committee

- Mission Statement (cont'd)
  - *providing technical and value-based input on stormwater issues,*
  - *serving as a sounding board to LFUCG DWQ staff on matters relating to the stormwater program and policies,*
  - *collaborating and networking together on stormwater-related topics that affect the broader community, and*
  - *serving as liaisons within our areas of influence for LFUCG's stormwater program.*

# Stormwater Stakeholder Advisory Committee

- **SSAC Membership Comprised of:**
  - **LFUCG** (e.g. UCC, Planning Commission, EQ&PW staff, PPD staff)
  - **Non-LFUCG Governmental Agencies** (e.g. FCPS, UK, KYTC, Federal Facilities...)
  - **Private Sector** (e.g. Commerce Lexington, Homebuilders Association of Lexington, Lexington-Bluegrass Association of Realtors, KAWC...)
  - **Citizen's Groups** (e.g. Fayette Alliance, Fayette County Neighborhood Council, Friends of Wolf Run, Bluegrass Greensource...)
  - **Open Seat Watershed Representatives – 3 yr terms**

# Stormwater Stakeholder Advisory Committee

- Various LFUCG departments and divisions
- LFUCG Planning Commission
- Fayette County Public Schools
- Fayette Alliance
- Fayette County Neighborhood Council
- Friends of Wolf Run
- Friends of Cane Run
- Friends of McConnell Springs
- Bluegrass Greensource
- University of Kentucky
- Kentucky Water Resources Research Institute
- Kentucky Transportation Cabinet District 7
- Kentucky American Water Company
- Homebuilders Association of Lexington
- Lexington-Bluegrass Association of Realtors
- VA Hospital
- Commerce Lexington (Anderson Communities, Briggs Homes, Link-Belt, Baptist Health, Smith Management)
- 9 watershed representatives

# Questions?

