

CONSTRUCTION PLANS

DRAKES' LANDING  
UNIT 4



JESSAMINE COUNTY, KENTUCKY

JULY 2023

OWNER/DEVELOPER  
LONG RIDGE PLANTATION, LLC  
532 MEADOWCREST PARK,  
LEXINGTON, KENTUCKY 40515

HORNE ENGINEERING, INC.

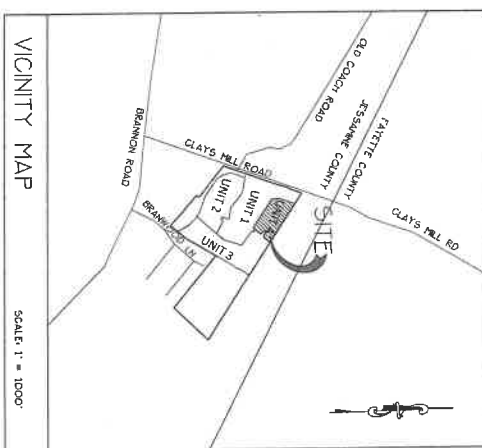
ENGINEERS - PLANNERS - LAND SURVEYORS  
216 SOUTH MAIN STREET - NICHOLASVILLE, KY. 40356  
(859) 885-9441 FAX (859) 885-5160

13 LOTS • 400 GPD - 5200 GPD

WO # 4216(4)  
WO # 4237(4)  
WO # 4238(4)

SOURCE CONTROL  
NONCONTIGUOUS SITE PLAN BY REMOTE SENSING  
VEHICLE: MANTRA

UNIT PROVIDERS  
DIA  
EOLINA GAS OF KENTUCKY  
LEXINGTON, KY 40311  
C290 282-0245  
SUNBELT  
SUNBELT UTILITIES  
ONE QUALITY STREET  
LEXINGTON, KY 40503  
C600 383-5400  
WATER  
JESSAMINE COUNTY DOMESTIC WATER DISTRICT  
HOLDENVILLE, KY 40358  
C600 501-0281  
SEWERAGE  
SUNBELT SEWER DISTRICT  
HOLDENVILLE, KY 40358  
C600 501-0281  
TELEPHONE  
SUNBELT TELEPHONE  
130 W. NEW ORLEANS ROAD SUITE 100  
LEXINGTON, KY 40503  
C600 391-2244  
CABLE  
SPECTRUM  
1700 WOODCREST ROAD SUITE 140  
LEXINGTON, KY 40505  
C600 504-2117



PLANNING COMMISSION APPROVAL

I hereby certify that these construction plans were approved by the  
Jessamine County - City of Willmore Joint Planning Commission at their  
regular meeting held on \_\_\_\_\_, 20\_\_\_\_.

Signed \_\_\_\_\_ Date \_\_\_\_\_  
Chairman

INDEX

PRELIMINARY PLAT _____	A
GENERAL NOTES _____	1
ROADWAY PLAN AND PROFILE _____	2
UTILITIES PLAN _____	3
LANDSCAPE, EROSION AND SEDIMENT CONTROL PLAN _____	4
SANITARY AND STORM PROFILES _____	5
SANITARY SEWER STANDARD DETAILS _____	6-7
STORM STANDARD DETAILS _____	8-9
WATER STANDARD DETAILS (SD-1 & SD-2) _____	10-11

GROUP EX-R



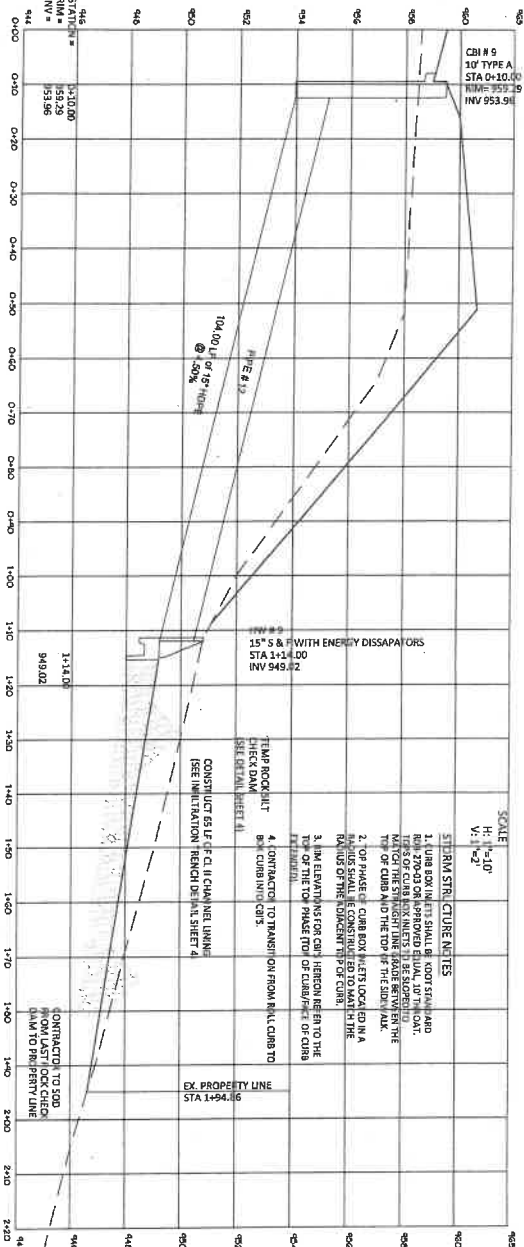












SCALE  
H: 1"=10'  
V: 1"=2'

**STORM STRUCTURE NOTES**

1. LINE BOX INLETS SHALL BE FOOTSTANDARD RIM 200-03 ON APPROVED EQUAL, 10" TYPICAL. TIPS OF CURB INLETS TO BE SLOPED TO THE TYPE OF CURB AND THE TOP OF THE EDIM WALK.
2. TOP PHASE OF CURB ROW IN SETBACKS IN A RADIUS SHALL BE CONSTRUCTED TO MATCH THE RADIUS OF THE TOPOGRAPHY OF CURB.
3. MAX. ELEVATION FOR CURB HEIGHT TO THE TOP OF THE TOP PHASE TOP OF CURB/TIP OF CURB TO BE MAINTAINED.
4. CONTRACTOR TO TRANSITION FROM INLET CURB TO THE CURB INLETS.

104.00' OF 12" RCP @ 1.50%  
15" S & 15" WITH ENERGY DISSIPATORS  
STA 3+34.00  
INV 945.72

CONTRACTOR TO SOO  
FROM TO BRIDGWAY LINE  
STA 1+94.16

STATIONING: 944, 945, 946, 947, 948, 949, 950  
ELEVATIONS: 940.00, 941.00, 942.00, 943.00, 944.00, 945.00, 946.00, 947.00, 948.00, 949.00, 950.00

**STORM STRUCTURES NOTES**

ALL MANHOLE STRUCTURES SHALL BE 18" DIA. STAINLESS STEEL. SEE DETAIL ON SHEET 5 OF 11.

MH D - 3  
STA 4+32.59  
INV IN = 952.00  
INV OUT = 952.00  
RIM 950.35

MH D - 4  
STA 8+42.15  
INV IN = 972.81  
INV OUT = 971.89  
RIM 978.46

SCALE  
H: 1"=10'  
V: 1"=5'

**SANITARY SEWER LINE D EXTENSION**

ALL MANHOLES SHALL BE FOOT STANDARD. SEE SHEET 5 FOR DETAILS.

STATION	ELEVATION	INVERT	OUTLET	DATE	SCALE
940	940.00	940.00	940.00	7/23	SEE ABOVE
945	945.00	945.00	945.00		
950	950.00	950.00	950.00		

**DRAKES LANDING - UNIT 4**  
LONG RIDGE PLANTATION, LLC  
CLAY MILLS ROAD, JESSAMINE COUNTY, KENTUCKY

**HORNE ENGINEERING, INC.**  
ENGINEERS, ARCHITECTS, LANDSCAPE ARCHITECTS  
338 CENTRAL KENTUCKY AVENUE, SUITE 200  
LEXINGTON, KY 40503  
(606) 253-1100 FAX (606) 822-5100

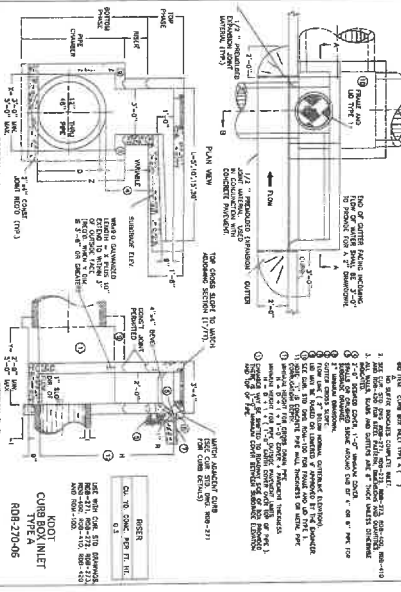
**SANITARY & STORM PROFILES**

SHEET 5 OF 11

**STORM STRUCTURES NOTE**

ALL CURB SHALL BE FOOT TO THE A CURB BOX INLETS.

1. 12" RCP PIPE SHALL BE CONSTRUCTED TO THE POINT 1 ABOVE AND 2" BELOW THE CURB INLET.
2. 12" RCP PIPE SHALL BE CONSTRUCTED TO THE POINT 1 ABOVE AND 2" BELOW THE CURB INLET.
3. 12" RCP PIPE SHALL BE CONSTRUCTED TO THE POINT 1 ABOVE AND 2" BELOW THE CURB INLET.



**12" RCP Pipe**  
Culvert Headwall  
W/ Overlap  
SW-580

**FRONT VIEW**

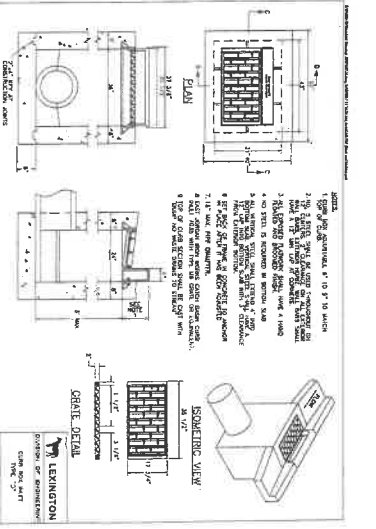
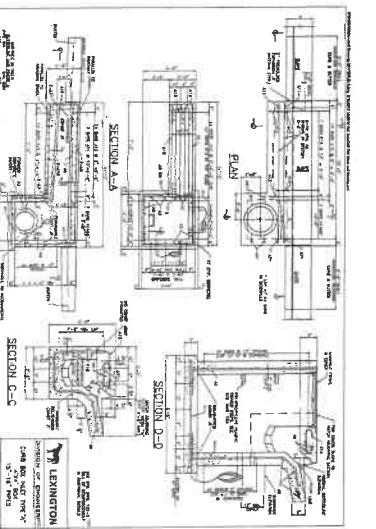
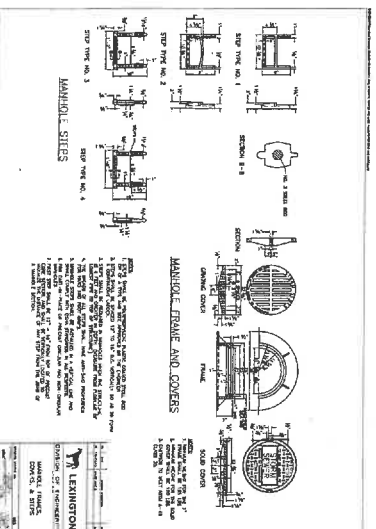
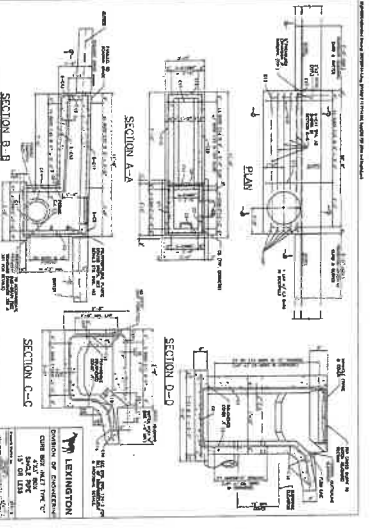
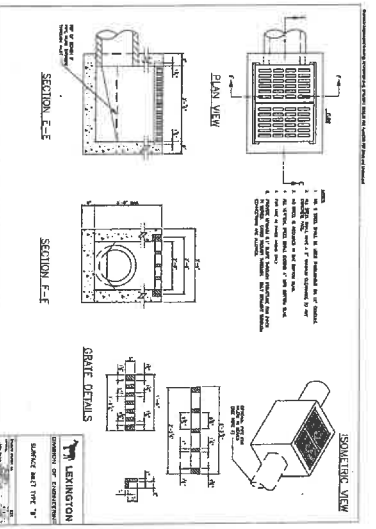
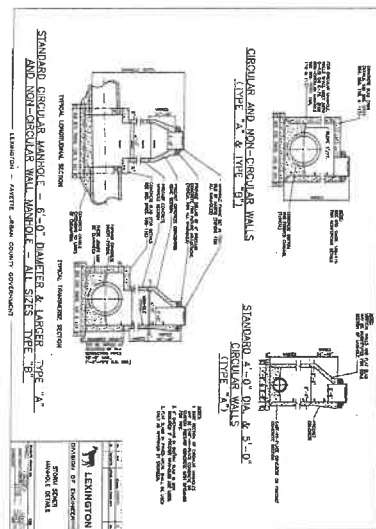
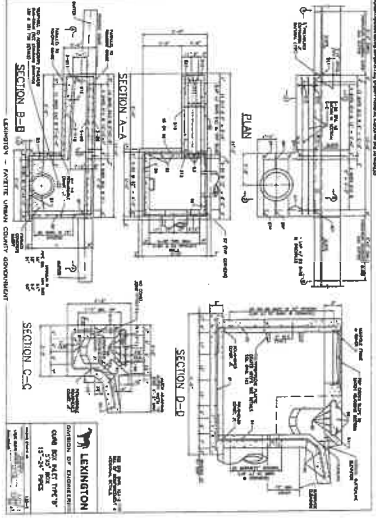
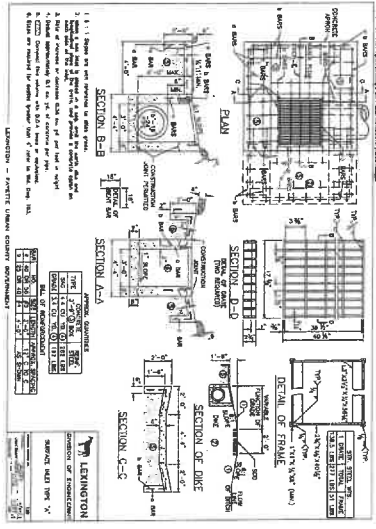
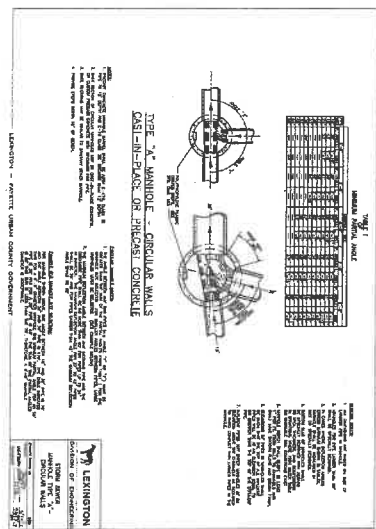
**PLAN VIEW**

**SECTION A-A**

Station	1	2	3	4	5	6	7	8	9	10
Station	12+00	12+10	12+20	12+30	12+40	12+50	12+60	12+70	12+80	12+90
Elevation	940.00	941.00	942.00	943.00	944.00	945.00	946.00	947.00	948.00	949.00

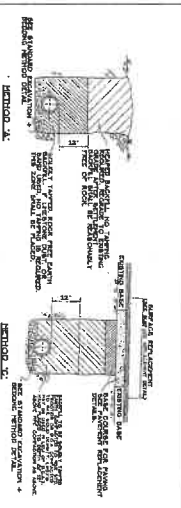
**DETAILS:**

1. Slope: 2% to 5.00%
2. Headwall: 2' x 2' x 2' concrete
3. 12" RCP Pipe
4. 12" Curb on W. End of Box

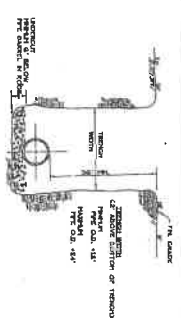




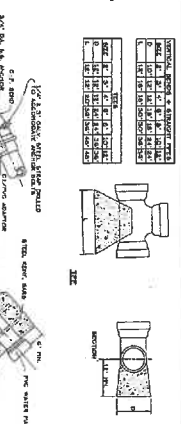




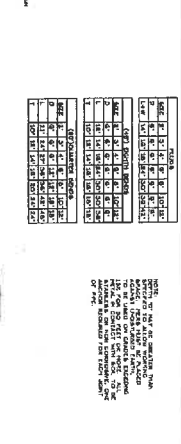
**Backfilling**  
SD-1  
NOT TO SCALE



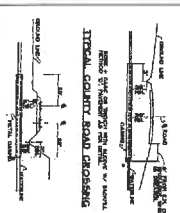
**Standard Excavation & Bedding Method**  
SD-2  
NOT TO SCALE



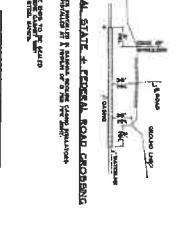
**Concrete Anchor Blocks**  
SD-3  
NOT TO SCALE



**Concrete Thrust Blocks**  
SD-4  
NOT TO SCALE



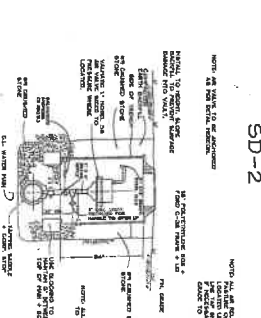
**TYPICAL CONCRETE ROAD CROSSING**  
SD-5  
NOT TO SCALE



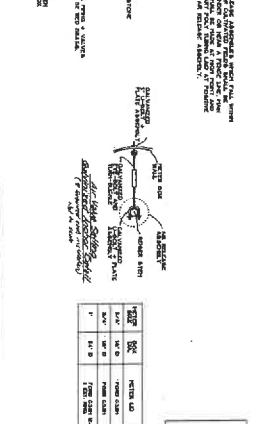
**TYPICAL GRADE & GENERAL ROAD CROSSING**  
SD-6  
NOT TO SCALE

ITEM	DESCRIPTION	QUANTITY	UNIT
1	CONCRETE CURB	1.00	LINEAR FOOT
2	CONCRETE	1.00	CY
3	GRAVEL	1.00	CY
4	GRAVEL	1.00	CY
5	GRAVEL	1.00	CY
6	GRAVEL	1.00	CY
7	GRAVEL	1.00	CY
8	GRAVEL	1.00	CY
9	GRAVEL	1.00	CY
10	GRAVEL	1.00	CY

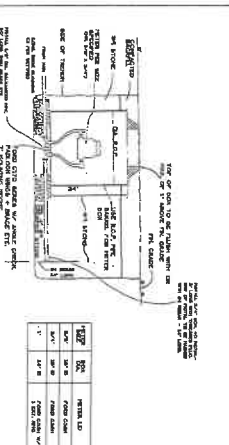
**Road Crossing Details**  
SD-5  
NOT TO SCALE



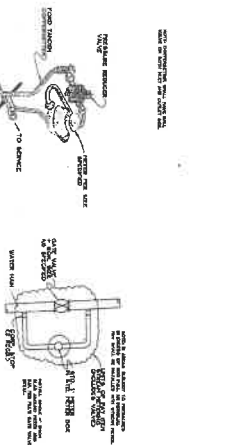
**TYPICAL AIR VALVE SETTING**  
SD-6  
NOT TO SCALE



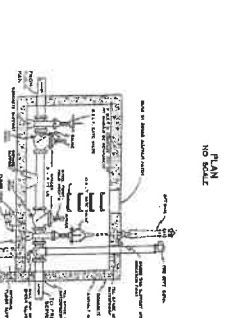
**TYPICAL SERVICE CONNECTION**  
SD-7  
NOT TO SCALE



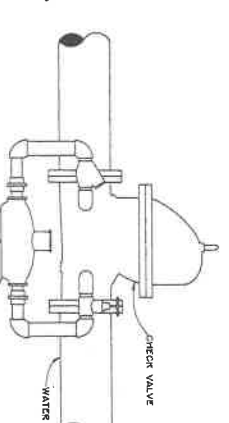
**TYPICAL METER INSTALLATION**  
SD-8  
NOT TO SCALE



**TYPICAL AIR VALVE SETTING**  
SD-9  
NOT TO SCALE



**DETECTION CHECK VALVE DOUBLE**  
SD-10  
NOT TO SCALE



**DETAIL OF DETECTION CHECK METER**  
SD-11  
NOT TO SCALE

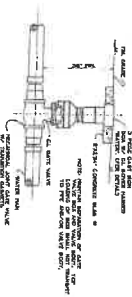
NO.	REVISION	BY	DATE	SCALE
1	ADDED NOTES	SDG 11/29/2013	SDG	N/A
2	REVISED NOTES	SDG 1/29/2013	SDG	N/A

DRAKES' LANDING UNIT 4  
LONG HIDGE DEVELOPMENT, LLC  
3519 BARNBYS FOOT TRAIL, PRIVATE COUNTY, KENTUCKY

HORNE ENGINEERING, INC.  
2180 HIGHLAND STREET, SUITE 100  
BOONVILLE, KY 40309  
(606) 855-9441 FAX (606) 855-5100

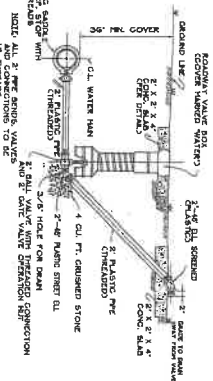
WATER STANDARD DETAILS  
SD-1

SHEET 10 OF 11



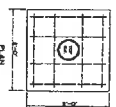
**Typical Gate Valve Settings**  
NOT TO SCALE

**SD-12**  
NOT TO SCALE



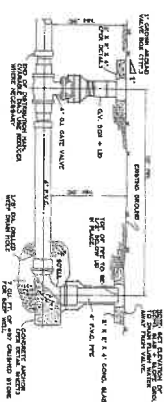
**Typical Blow-off**  
NOT TO SCALE

**SD-15**



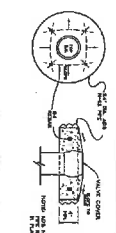
**VALVE BOX PAD DETAILS**  
NOT TO SCALE

**SD-13**



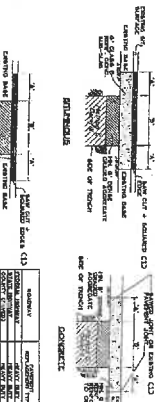
**Line Termination Blow-off**  
NOT TO SCALE

**SD-16**



**FIRE HYDRANT VALVE + VALVE BOX**  
NOT TO SCALE

**SD-14**



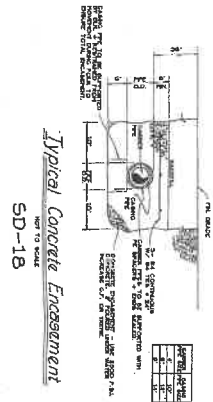
**PAVEMENT REPLACEMENT**  
NOT TO SCALE

**SD-17**



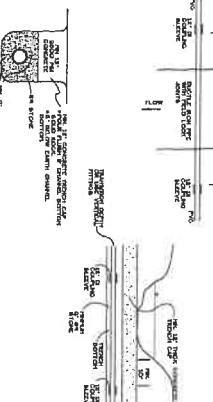
**DEADMAN ANCHOR DETAIL**  
NOT TO SCALE

**SD-21**



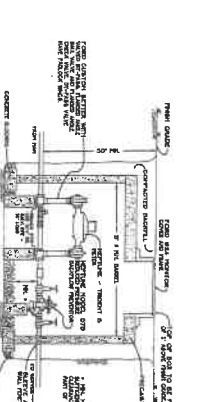
**Typical Concrete Encasement**  
NOT TO SCALE

**SD-18**



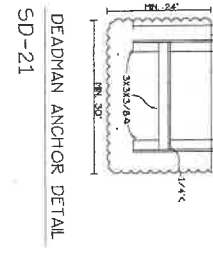
**TYPICAL STREAM CROSSING**  
NOT TO SCALE

**SD-19**



**TYPICAL METER INSTALLATION**  
NOT TO SCALE

**SD-20**



**WATER STANDARD DETAILS**  
NOT TO SCALE

**SD-2**

NO.	REVISION	BY	DATE	SCALE
1	ADDED NOTES	DRG: JH/2020	NOV. 2013	N/A
2	REMOVED NOTES	DRG: JH/2021	NOV. 2013	N/A

DRIVES LANDING UNIT 4  
LONG RIDGE DEVELOPMENT, LLC  
3519 RABBIT FOOT TRAIL, PAVETTE COUNTY, KENTUCKY

HORNE ENGINEERING, INC.  
215 SOUTH MAIN STREET  
MADISON, MISSISSIPPI 39101  
(601) 885-2441 FAX (601) 885-5120

WATER STANDARD DETAILS  
SD-2

SHEET 11 OF 31