

RFQ #38-2016 | Professional Engineering Services Contract 1
Submitted November 10, 2016

Roadway Corridor and Intersection Design Planning



1. Letter of Transmittal

November 10, 2016

To: Todd Slatin – Purchasing Director, Lexington-Fayette Urban County Government
Room 338, Government Center
200 East Main Street
Lexington, KY 40507

RE: RFQ #38-2016 Professional Engineering Services Contract 1
Roadway Corridor and Intersection Design Planning

Dear Mr. Slatin and the Consultant Selection Committee:

Stantec has held the above-referenced contract since 2014 and we would like to continue our successful working relationship with LFUCG for another contract cycle. As you have seen throughout our work on this contract, we are responsive to your requests and have the experienced engineers and support people to handle all types of roadway and intersection work. With 200 staff in Lexington alone, Stantec is the largest locally-based engineering consultant in Lexington and we have provided transportation engineering design services in Kentucky since 1969.

As you already know, we are leading the extension of Newtown Pike (Oliver Lewis Way), giving us familiarity with how LFUCG manages roadway and intersection design projects. Jason Bricker will serve as the project manager for this contract, due to his familiarity with LFUCG through his work on Newtown Pike and other projects. He has 19 years of experience leading roadway design and intersection projects, and he has significant experience working on on-call services contracts with aggressive schedules. Glenn Hardin will serve as the principal for this contract and as an additional point of contact if needed. He offers over 25 years of roadway design and management experience, and, as the department manager for Stantec's Kentucky roadway design department, will make sure LFUCG has adequate workforce for any project we are assigned.

100% of this contract's leadership comes from our Lexington office and almost all staff assigned to this contract is based in Lexington (with limited support coming from our nearby Louisville, Kentucky office). To meet DBE/MBE goals, we have enlisted two firms to our team: Integrated Engineering and BA Engineers. Lexington-based Integrated will support surveying efforts and drainage design. BA Engineers, a Veteran-owned firm, will support surveying and roadway design efforts. We recognize that LFUCG has a DBE goal of 10% and a 3% goal for Veteran-owned involvement. By including both firms on our team, we will meet these goals on any assignment awarded.

The following statement of qualifications will tell you more about our team and what we can offer LFUCG under this important on-call services contract. Thank you for your time and consideration.

Sincerely,
Stantec Consulting Services, Inc.



Glenn Hardin, PE
Transportation Engineering Manager
(859) 422-3000
Glenn.Hardin@stantec.com

2. Firm Qualifications

We're active members of the communities we serve. That's why at Stantec, we always **design with community in mind**.

The Stantec community unites approximately 22,000 employees working in over 400 locations across six continents. Our work—engineering, architecture, interior design, landscape architecture, surveying, environmental sciences, project management, and project economics, from initial project concept and planning through design, construction, and commissioning—begins at the intersection of community, creativity, and client relationships. With a long-term commitment to the people and places we serve, Stantec has the unique ability to connect to projects on a personal level and advance the quality of life in communities across the globe. Stantec trades on the TSX and the NYSE under the symbol STN. Visit us at stantec.com or find us on social media.

Why Select Stantec to Provide Roadway and Intersection Design and Planning Services?

Projects under this contract may not only be about deciding *what* to do, but also deciding *how* to do it. You'll need a project partner that can help you identify the best solutions to any transportation problems that may arise, attain agency approvals when needed, lead productive and informative public involvement, and set the tone for future development and investments. With this in mind, we're excited to continue on this journey with you. Based on our past work with LFUCG, we have a solid foundation and understanding of your expected results and how best to make any LFUCG project a success. Here are the top four qualities our team offers you:

Proven project leadership. Proposed project manager **Jason Bricker, PE**, is someone you know well from his years of work on the Newtown Pike Extension project. He'll be supported by project principal **Glenn Hardin, PE**, who is currently leading the Newtown Pike Extension project along with Jason. Jason and Glenn work from Stantec's downtown Lexington office at Beaumont Centre, and will be supported primarily from others at this location.

Roadway planning and design project experience in Lexington. We've worked all across Kentucky, on both urban and rural roadway projects, intersection and interchange design projects, design/build pursuits, structure design, pavement rehabilitation, geotechnical investigations, and utility design. We locally offer specialized services such as roundabout design, access management, traffic analysis, 3D simulation and modeling, and effective stakeholder outreach. Not many Kentucky teams can offer all of these services using only Kentucky staff.

Environmentally-friendly design options. Planning for your infrastructure's future starts with sustainable design. We share your social, economic, and environmental values, and we pride ourselves on designing solutions that build stronger communities today and tomorrow. Our unique ENVISION™ rating system can help assess sustainability on any project and improve the final product while keeping cost and schedule in mind. We think of it like the LEED process applied to transportation projects instead of to buildings. Sustainability can become an important factor if you seek grant funding later in the process. Although this may not be a consideration for every project under this contract, this is a valuable service we're happy to provide if needed.

Responsive service from years of on-call experience. Stantec has successfully performed on-call engineering services for several Kentucky Transportation Cabinet (KYTC) statewide services contracts so we understand how important it is to be just a phone call away. Under these KYTC contracts, Stantec has successfully completed numerous planning and engineering projects with components similar to those that will come out under this LFUCG contract. Through these contracts Stantec has developed an excellent relationship with each of our clients and other reviewing agencies, which is why we deeply understand the permitting processes in Lexington and across the state.



About the Stantec Consulting Services Inc. Transportation Design and Planning Group

Since establishing our transportation practice in 1969, we've been consistently a "go-to" consultant for all types of roadway and intersection design for several clients including the KYTC and LFUCG. As we stated in our cover letter, with 200 staff in Lexington alone, Stantec is the largest locally-based engineering consultant in Lexington. While we have successfully completed many standard urban and rural roadway design projects, interchange designs, and design/build projects, Stantec has also successfully completed some of the most innovative projects in Kentucky. From the only operational double crossover diamond (DCD) interchange right here in Lexington to numerous fast-paced pavement rehabilitation projects to the Louisville Bridges Downtown Project, we have design professionals with innovative experience unmatched locally by other firms.

Our current KYTC average evaluation score is 96 on a 100-point scale, consistently higher than the published state averages (currently 94). It's clear we're a firm that does quality work on every project. That's exactly the kind of firm you need on a fast-paced, on-call contract like this one.

We also take pride in our knowledge of the state's policies and procedures. The Kentucky Engineering Center (KEC) thought so highly of our KYTC experience and knowledge that a few years ago they asked us to develop a training program to teach the KYTC Process to their young Engineers-in-Training. Although that program is now handled through the University of Kentucky, the KEC came to us first because of our reputation, our experience, and their faith in us to teach their future leaders. Put simply, Stantec has the capacity and enough roadway designers to assemble several different teams of exceptionally qualified staff on multiple, simultaneous assignments.



About BA Engineers

Founded in 1976, BA Engineers (a division of Bryant Associates, Inc.) is a veteran-owned small business, providing professional consulting engineering services. BA Engineers is also a minority and disadvantaged business enterprise (MBE/DBE), certified by various states, government agencies, counties, cities, and towns. BA Engineers provides civil, structural, and traffic engineering; water resources; construction management; and surveying services to public and private clients. BA Engineers' engineers bring a wealth of knowledge to the study and design of safe, practical, and cost effective roadways that enhance vehicular and pedestrian traffic flow as well as improve safety. Their staff has worked with numerous cities, towns and state agencies. In addition, BA Engineers' traffic engineers have undertaken traffic impact analyses for private developers, architects, attorneys, and other engineering firms and frequently provide expert testimony before public boards and agencies.

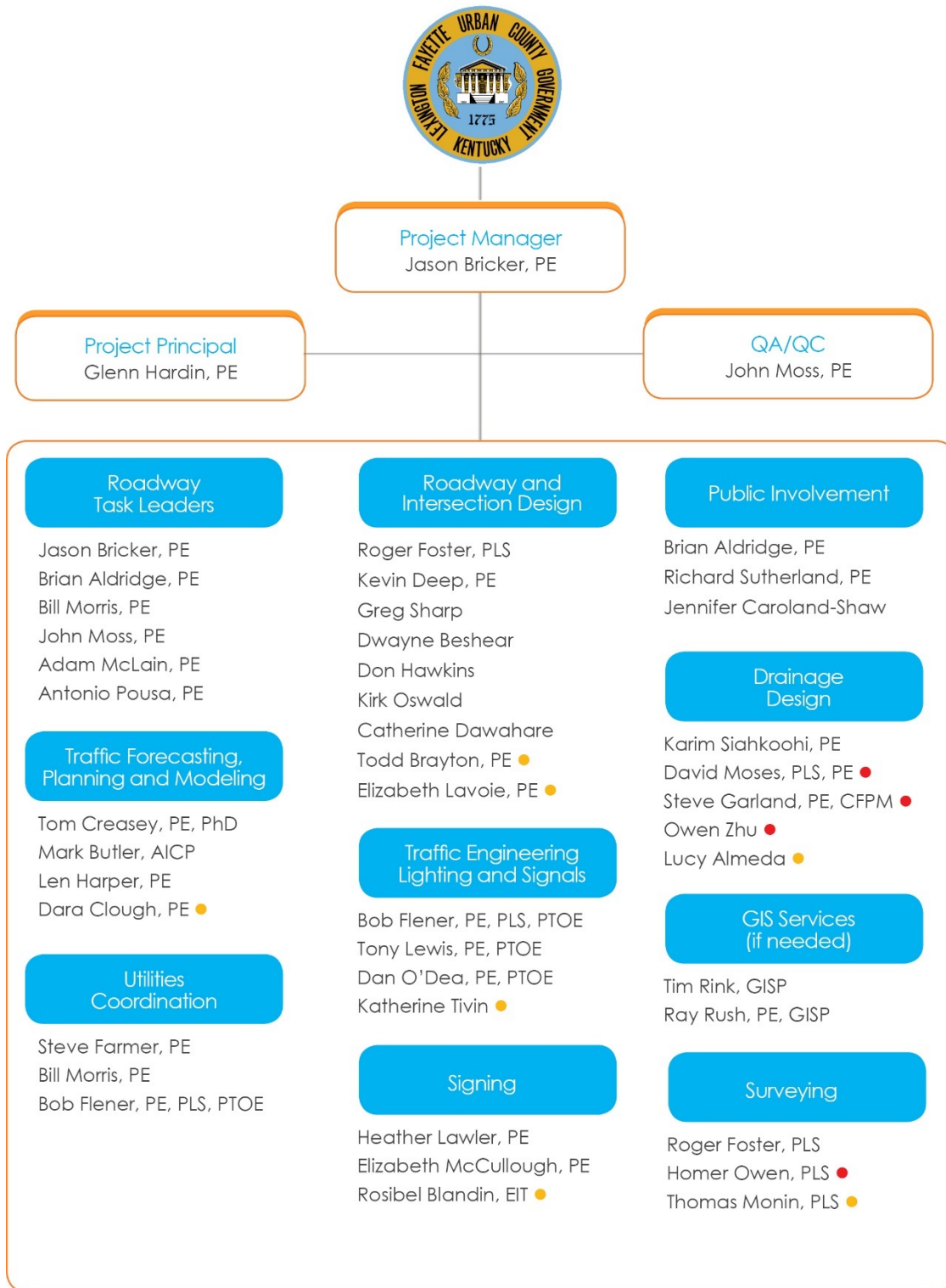


About Integrated Engineering

Integrated Engineering, PLLC is a professional engineering, surveying, and landscape architecture firm that offers a wide array of experience in various fields of planning and design. Their areas of expertise include rural and urban roadway design, bridges and retaining walls, storm water management, land development, water and wastewater, and landscape architectural design. IE became established as a DBE firm working as a sub-consultant for larger engineering firms in 2006 on roadway design jobs for the Kentucky Transportation Cabinet performing surveying and roadway design engineering services. IE is established as an expert in roadway drainage design and has continued that through the years with the addition of David Moses, former chief drainage engineer for the transportation cabinet. Integrated Engineering currently holds multiple statewide contracts with the Kentucky Transportation Cabinet.

3. Project Team

The Stantec team members assigned to this project are ready to get to work on any task order immediately upon Notice to Proceed and whenever you call with an assignment. All staff are Stantec unless otherwise noted.



Legend

- BA Engineers (veteran-owned DBE/MBE)
- Integrated Engineering (DBE/MBE)

Resumes

The following pages highlight the experience of our key team members. Full resumes are included for project manager Jason Bricker and for project principal Glenn Hardin. Shorter biographies for other key team members begin on page 4-4. **Because our key team members work exclusively on roadway design projects, every member of our team has relevant experience in at least three similar projects within the past three years.**



*KY PE #22536
BS, Civil Engineering,
University of Kentucky*

Jason Bricker, PE

As a Senior Project Manager with 19 years of experience, Jason has worked on all types of highway projects throughout Kentucky. His experience includes quantity calculations, cost estimates, pavement design, and maintenance of traffic, construction, and right-of-way plans. He is proficient in using MicroStation and InRoads. Jason has actively led the Newtown Pike Extension project for nearly five years. As a result, he understands LFUCG's expectations of consultant engineers and is the ideal person to lead this contract. For any assignment under this contract, Jason will be your first point of contact. He'll work closely with project principal Glenn Hardin and QA/QC lead John Moss to identify the resources needed for any project to submit an accurate cost/hours estimate commensurate to project scope and needs. Upon award of any assignment, Jason will promptly meet with the LFUCG project manager and other key stakeholders. Throughout the planning and design process, he will coordinate with local staff to address technical elements while driving the project's budget and schedule. *Located in Lexington.*

Similar Projects

Newtown Pike Extension (2007 – Present), Fayette County, Kentucky. Project engineer/manager responsible for Phase II design, cost estimates, utility coordination, and coordination of the lighting and signal design. This project is one of four sections of the entire Newtown Pike Extension project which involves design for a 1.3-mile extension of an urban boulevard in Lexington's central business district.

US 68 (Harrodsburg Road) Widening (2007 – 2011), Lexington, Kentucky. Responsible for design of a double crossover diamond interchange for the widening of Harrodsburg Road in Lexington. This project provided additional capacity through the New Circle Road interchange. Phase I evaluated multiple alternatives such as, providing dual left turns for the New Circle entrance ramps, additional through lane in both directions and providing a diverging diamond interchange at this location. Shared use paths were incorporated in the final design to accommodate pedestrian and bicycle traffic.

KY 111 Reconstruction (2014-present), Bath County, Kentucky. Jason is the project manager for this project that involves developing a preliminary design alternative to create a safer roadway between the Owingsville and Grange City communities. Our design will eliminate a horizontal S-curve, improve the vertical geometry, widen the travel lanes, and increase sight distance.

KY 536 DCD (2015-present), Boone County, Kentucky. Jason is leading the design of the Phase II (final) design of a double crossover diamond (DCD) interchange project and contributed to Phase I (preliminary design) efforts.

KY 32 Reconstruction (2013- 2016), Rowan County, Kentucky. During Phase I design, Jason assisted with the initial design and layout of alternatives which included minimizing utility impacts, reducing right of way takings, creating maintenance of traffic schemes, and public involvement.



Glenn Hardin, PE

Glenn is responsible for project design and coordinating project engineers, technicians and CADD operators on all Stantec's Kentucky highway study and design projects. He has his hand in every roadway design project currently underway by Stantec's Lexington staff. He oversees the preparation of highway design plans for all classes of roads and highways, which includes determination of horizontal and vertical geometrics, templates, and cross sections; preparation of traffic and capacity analyses; design of roadway drainage systems; determination of right-of-way requirements; preparation of legal deed descriptions for right-of-way acquisitions; development of detour and traffic control plans; and preparation for, and presenting information at, public meetings and hearings. *Located in Lexington.*

*KY PE #17144
BS, Civil Engineering,
University of Kentucky*

Similar Projects

KY 4 (New Circle Road) Widening (2012 - Present), Fayette County, Kentucky. Department Manager for Phase II roadway design of a four-lane raised median urban major collector-distributor. Improvements include adding a lane each direction, auxiliary lanes between interchanges and redesign of the US 25 (Georgetown Road)/KY 4 interchange.

Newtown Pike Extension (2007 – Present), Lexington, Kentucky. Responsible for the preparation of an engineering design study report and Phase I environmental analysis for a 1.3-mile extension of an urban boulevard around the southern portion of the central business district. This project involves traffic analysis of the Lexington street system; right-of-way and utilities relocation; socioeconomic impacts; cultural historic impacts; drainage impacts; meetings with government officials and the public; preliminary location and design; and cost estimates.

Newtown Pike Design Build (2006 – 2007), Fayette County, Kentucky. Glenn performed QA/QC for improving safety and mobility of a section of Newtown Pike in conjunction with the 2010 World Equestrian Games. These improvements were needed to make sure the highway could handle anticipated traffic volumes for such a large, worldwide event. As the prime design consultant, Stantec used context sensitive design techniques to improve Newtown Pike while preserving the route's scenic features, including the dry stone fences, horse farms and rolling hills for which the Bluegrass is famous. Services included preparing right of way plans and final design roadway plans; utility coordination and right of way acquisition services; public involvement; and structural engineering and final structure plans to replace an existing bridge.

KY 536 Double Crossover Diamond (DCD) (2012 - Present), Boone County, Kentucky. Overall project manager responsible for Phase I engineering and environmental services and Phase II final roadway design for the reconstruction of the existing KY 536 interchange to a DCD interchange per the Interchange Justification Study.

US 68 Harrodsburg Road Widening (2007 – 2011), Fayette County, Kentucky. Project Manager responsible for the design of a DCD interchange for the widening of Harrodsburg Road in Lexington. The purpose of the project was to provide additional capacity through the New Circle Road interchange. Phase I looked at alternatives such as providing dual left turns for the New Circle entrance ramps, additional through lane in both directions and providing a DCD interchange at this location. The DCD was selected as the preferred option and carried forward to Phase II design and ultimately constructed. Shared use paths were incorporated in the final design to accommodate pedestrian and bicycle traffic.

Additional Key Staff



*KY PE #23118
MS, BS, Civil Engineering,
University of Kentucky*

Brian Aldridge, PE

Brian leads Stantec's Phase I Design Group in Kentucky, giving him the opportunity to work with both planning staff, as well as design professionals. A transportation engineer for 19 years, he has experience working on a wide range of transportation projects across the country. His areas of expertise include transportation planning, transportation system design and operations, public involvement, land use planning, railroad and airport facilities design and analysis, environmental planning, and access management. Brian is familiar with a broad range of engineering design software and has been working with geographic information systems for more than 15 years. He has served as a volunteer helping teach the Capstone Design course for senior civil engineering students at UK for the past two years. *Located in Louisville.*



*KY PE #18786
MS, BS, Civil Engineering,
University of Kentucky*

Steve Farmer, PE

Steve retired from the Kentucky Transportation Cabinet with nearly 23 years of experience in the maintenance and construction areas serving in various leadership positions in District 7 (which includes Lexington/Fayette County). He has been involved with a wide range of transportation projects across central Kentucky. His areas of expertise include; project administration, construction, maintenance, traffic control, erosion control, and access management. He has served as a volunteer speaker to students about the importance of math and science along with giving an introductory course to civil engineering for more than 20 years. *Located in Lexington.*



*KY PE #23738
BS, Civil Engineering,
University of Kentucky*

Heather Lawler, PE

Heather has 18 years of roadway design experience, including highway design plans for all classes of roads and highways; determining horizontal and vertical geometrics, templates, and cross sections; designing roadway drainage systems; determining right of way requirements; developing detour and traffic control plans on all types of highway design projects; and preparing information for public hearings. *Located in Lexington.*

**Stantec has 51 engineers, designers,
and interns in our Lexington-based
transportation group**



*KY PE #25744
BS, Civil Engineering,
University of Kentucky*

Adam McLain, PE

As a Transportation Engineer with 12 years of professional experience, Adam's focus has been primarily on geometric design and elements involved in Phase I (preliminary) design. More recently, Adam has become involved in projects nearing completion and has gained expertise in Phase II design. Adam has more than 10 years of Microstation experience, nine years of ProjectWise experience, and 10 years of Inroads experience. He has become very knowledgeable in the use of Inroads in both Phase I and II design and the software's capabilities of modeling more advanced situations. *Located in Lexington.*



*KY PE #11985
BS, Civil Engineering,
University of Kentucky*

Bill Morris, PE

Bill has 42 years of experience and has been involved in the planning, design and implementation of numerous transportation projects throughout Kentucky, including project management for the Newtown Pike Design/Build. He has worked on both rural and urban projects, widening/reconstruction projects, and intersection/interchange projects. Bill's responsibilities have included the production of highway construction plans; geometric, drainage and pavement design; erosion control plans; traffic control plans; striping plans; signing plans; and right-of-way plans. *Located in Lexington.*



*KY PE #17060
BS, Civil Engineering,
Purdue University*

John Moss, PE

John has 33 years of civil and environmental engineering experience. For the past 18 years, he has been involved mainly with roadway design with an emphasis on complex highway interchanges. In addition, his roadway experience includes interstate and other classifications of roadway design, maintenance of traffic designs, scoping studies and alternative analyses, and interchange justification studies. John is proficient in many software design packages, including: AutoCAD, MicroStation, Inroads, Storm & Sanitary, Guidesigns, and Autoturn. John recently served as Stantec's QA/QC Task Leader for the Louisville-Southern Indiana Downtown Bridge project. *Located in Louisville.*



*KY PE #21521
MS, BS, Civil Engineering,
University of Kentucky*

Antonio Pousa, PE

Antonio has 19 years of experience planning and designing transportation projects. His experience includes urban and rural arterial roads, signalized intersections, interchanges, roundabouts, parking lots, and bicycle and pedestrian facilities. Antonio is proficient in several design and analysis tools used in transportation engineering, including CADD software (Microstation, InRoads and Autoturn) and software for traffic analysis (VISSIM, CORSIM and aaSIDRA) and drainage (HYDRAIN, Hydraflow Storm Sewers and Culvert Master). *Located in Lexington.*

How We'll Work with You

As soon as you call with a possible assignment, we'll get right to work identifying project needs so we can give you an accurate scope and cost estimate. Upon award, we'll meet with you to kick off the project. While tasks under this contract will vary, they all will share common goals:

1. Engage the Lexington-Fayette County community in meaningful ways;
2. Generate feasible, affordable solutions and accurately assess the costs, benefits, and impacts; and
3. Streamline the development process to keep costs down and schedules moving.

This overarching philosophy helps guide the path to any project's successful conclusion because any task will ultimately go back to one of these three goals.

Our previous work on on-call type contracts and LFUCG projects shows we understand your expectations of on-call consultants. We know it's important to you that we keep you in the loop about our progress on assignments, but we also understand that you need a consultant who can take initiative and be your trusted advisor.

Stantec will serve as the prime consultant and will lead all tasks assigned under this contract. We recognize that there is a 10% DBE goal and a 3% Veteran-owned business goal, so we have included DBE/MBE firm Integrated Engineers on our team and Veteran-owned BA Engineers (also MBE/DBE). Both firms will provide surveying services as needed. Depending on the size of assignments, we may also use these firms in other roles to meet your DBE requirements. Integrated may provide additional support in drainage design, while BA may be utilized for roadway design, signing, and other services.

We've worked all across Kentucky, on both urban and rural projects, intersection and interchange design projects, design/build projects, structure design, pavement rehabilitation, geotechnical investigations, and utility design. We offer specialized services such as roundabout design, access management, traffic analysis, 3D simulation and modeling, and effective stakeholder outreach. Not many Kentucky teams can offer all of these services using only Kentucky staff. Other consultants, particularly national firms, will make the same statement that they have the resources to provide any service imaginable. This may be true, but what sets us apart is we have nearly all of these resources already here in Lexington.

Proven QA/QC Process

Stantec has continually received top marks for Preliminary Line and Grade plans, final inspection, ROW/utilities plans, grade and drain plans, MOT, plan quality, and more from KYTC. Creating and verifying a high quality set of drawings doesn't happen by accident. It takes a team of dedicated, experienced roadway design professionals who know how to tailor and implement a project-specific Quality Management Plan.

How can you be sure our QC/QA process really works?

We recently received comments from three different reviewers within the KYTC Plan Processing Branch for our US 119 Project Final Plans. Our plans averaged fewer than eight unique comments per reviewer, and all comments were relatively minor. Plans of this high quality expedite your review time and ultimately, you receive approved final plans faster.

4. List of Clients

Clients for which similar work has been performed

Client	Contact Name	Phone Number and Email Address	Project
Lexington-Fayette Urban County Government) Lexington, KY	Andrew Grunwald Project Manager	(859) 258-3597 AGrunwald@lexingtonky.gov	<ul style="list-style-type: none"> Newtown Pike Extension Lexington, KY
Kentucky Transportation Cabinet District 7 Lexington, KY	Robin Sprague Transportation Engineering Branch Manager for Project Development	(859) 246-2355 Robin.Sprague@ky.gov	<ul style="list-style-type: none"> US 68 Harrodsburg Road DCD, New Circle Road & Newtown Pike Design-Build Lexington, KY KY 11 Levee Road, Mt. Sterling, KY
Lexington-Fayette Urban County Government Lexington, KY	Bob Bayert Project Manager	(859) 258-3441 bobb@lexingtonky.gov	<ul style="list-style-type: none"> Lexington Congestion Management Study Update, Lexington, KY
Kentucky Transportation Cabinet Central Office Frankfort, KY	Andre Johannes Transportation Engineering Branch Manager	(502) 564-3280 Andre.Johannes@ky.gov	<ul style="list-style-type: none"> Statewide Pavement Rehabilitation, various, KY
Kentucky Transportation Cabinet District 9 Flemingsburg, KY	Darrin Eldridge Transportation Engineering Branch Manager for Project Development	(606) 845-2551 Darrin.Eldridge@ky.gov	<ul style="list-style-type: none"> KY 1/7 Carole Malone Boulevard Widening Grayson, KY US 60 Widening, Ashland, KY
City of Georgetown, KY Georgetown, KY	Ben Krebs Project Manager	(859) 258-3000 BKrebs@lexingtonky.gov	<ul style="list-style-type: none"> Northeast Georgetown Traffic Study Georgetown, KY
City of Versailles Versailles, KY	Bart Miller Public Works Director	(859) 873-2245 BMiller@cityhall.versaillesky.com	<ul style="list-style-type: none"> Northwest Versailles Mobility Study, Versailles, KY
Kentucky Transportation Cabinet District 1 Paducah, KY	Mike McGregor Chief District Engineer	(270) 898-2431 Mike.McGregor@ky.gov	<ul style="list-style-type: none"> Ohio River Megapark Connector & US 60 Scoping Study Paducah, KY

5. List of Similar Projects

Similar projects performed by Key Team Members

Newtown Pike Extension

Lexington, KY

Date of Service

Ongoing

Construction

Cost: \$ 75M

Team Members

Jason Bricker
Glenn Hardin
Dwayne Beshear
Adam McLain
John Moss

Project Description: Stantec was responsible for preparing an engineering design study report, environmental analysis, and Phase I and II design for a 1.3-mile extension of an urban boulevard around the southern portion of Lexington's central business district. The project includes the design of bicycle lanes and pedestrian facilities along the entire length of the route.

The project included a comprehensive land use plan for the 400 acres surrounding the corridor and the redevelopment of a 25-acre neighborhood due to environmental justice impacts.



Newtown Pike Design-Build

Lexington, KY

Date of Service

2006-2007

Construction

Cost: \$2.2M

Team Members

Glenn Hardin
Bill Morris
Karim Siahkoohi

Project Description: Stantec was the design lead on the design-build team responsible for designing and constructing safety and mobility improvements to a critical portion of Newtown Pike in advance of the 2010 World Equestrian Games.

The team used context-sensitive construction and design techniques to improve 2.2 miles of Newtown Pike while preserving the route's scenic features, including more than a mile of dry stone fences, horse farms and rolling hills for which Kentucky is famous. Stantec was responsible for designing the highway improvements; preparing right-of-way (ROW), roadway, structure, landscaping, signing, striping, stream mitigation and signal plans; utility coordination; ROW acquisition; and public involvement. Stantec also provided structural engineering to replace an existing single-span bridge with a three-span, skewed, cast-in-place concrete slab bridge with special architectural barrier treatments. The exterior openings were designed to only operate at higher flows to increase capacity and prevent flooding. Two specially designed pipe safety headwalls for triple 30" pipes eliminated the need for guardrail and improved aesthetics.



KY 536 DCD

Boone County, KY

Date of Service

2011 - Present

Construction

Cost: \$TBD

Team Members

Jason Bricker
Glenn Hardin
Brian Aldridge
Antonio Pousa
John Moss

Project Description: Based on the success of the US 68 DCD in Lexington, we are designing a new DCD in Northern Kentucky. The project seeks ways to improve safety on the interstate entrance and exit ramps by reducing congestion and resulting queues. Stantec is responsible for roadway design, public involvement coordination (including a project website), 3D modeling and traffic simulations, signal design and lighting, and design of bike/pedestrian accommodations.

Environmental services under the contract include terrestrial/aquatic, noise, socioeconomic, air quality and HazMat base studies and preparation of the environmental document, a Level 3 Categorical Exclusion, which was approved in the fall of 2014 with very high marks from FHWA.



Similar projects performed by Key Team Members

Johns Hill Road Roundabouts

Campbell County, KY

Date of Service

2003-2010

Construction

Cost: \$5M

Team Members

Glenn Hardin
Brian Aldridge
Greg Sharp
Adam McLain

Project Description: Stantec completed the design studies, surveying, drainage design, traffic control, erosion control, right-of-way plans, and construction plans with construction cost estimates. This was the second phase of an overall project to reconstruct nearly a mile of KY 2345 (John's Hill Road) and reroute approximately 0.6 miles of University Drive, from Nunn Drive to KY 2345.

This project was coordinated with the Kentucky Transportation Cabinet and Northern Kentucky University and accompanied the construction of a new arena and parking garage adjacent to the University Drive/Nunn Drive intersection.



New Circle Road (KY 4)

Lexington, KY

Date of Service

Ongoing

Construction

Cost: \$24M

Team Members

Jason Bricker
Glenn Hardin
Brian Aldridge
Greg Sharp
Adam McLain
Antonio Pousa
Kevin Deep

Project Description: As a subconsultant Stantec assisted with the preparation of preliminary line and grade plans, and environmental analysis of the New Circle Road/Newtown Pike interchange. The project included a preliminary phase to provide an addendum to the signalized portion of the New Circle Road planning study.

Stantec was responsible for geometric design, traffic engineering and signalization analysis, and bicycle and pedestrian planning. An "Initial" construction project was developed by Stantec, to be built prior to the interchange reconstruction. It provides a westbound auxiliary lane between the Newtown Pike and Georgetown Road interchanges to improve traffic operations. It also increases the storage capacity of the Georgetown Road interchange ramps and improves entrance and exit tapers at New Circle Road. Stantec was later responsible for the final design of the Georgetown Road interchange improvements that tie to the proposed widening of New Circle Road.



KY 56

Lexington, KY

Date of Service

Ongoing

Construction

Cost: TBD

Team Members

Glenn Hardin
Heather Lawler
Adam McLain
Greg Sharp
John Moss

Project Description: KY 56 is the most direct link between Morganfield and the Shawneetown Bridge crossing the Ohio River. By making improvements to achieve a Class "AAA" National Truck Network (NN) rating, this project will create a safer KY 56, remove truck traffic from Sturgis and other area roads improving safety and reducing congestion concerns in nearby communities. It will also provide a more direct route for the trucks that travel through this region every day.

Improving the substandard curves, widening the travel lanes, providing shoulders and passing areas, and constructing a more robust pavement structure are the key elements needed to get KY 56 on the NN. We recommended that a new roadway with shoulders be constructed adjacent to the existing road, improving the horizontal curves as required so that they meet the current KYTC standard for a 55-mph design speed. The pavement structure on the new roadway will be designed with a greater structural capacity to support the heavier trucks that will be using the improved roadway.



6. Local Office



Stantec delivers award-winning professional engineering solutions from the Horse Capital of the World. We're committed to helping people live, work, and play better around the Bluegrass and especially in Lexington. Whether you've biked through Kentucky's first DCD on Harrodsburg Road, driven down the newly re-designed Newtown Pike/Oliver Lewis Way in Lexington, or requested sewer capacity from Lexington's Capacity Assurance Program, you've experienced Stantec's work.

Our contribution to the local economy goes beyond the dollars we spend here. We've also invested our time, energy, and passion into serving the Lexington community. We are frequent volunteers for Red Cross, the Catholic Action Center, KET, and many more organizations that serve Lexington.

Since the 1960s, Stantec has been a part of the Lexington community. With the acquisition of the firms Fuller, Mossbarger, Scott & May (FMSM) and ENTRAN within the past 10 years, we've strengthened our capabilities in service areas where we were already well known. For more than 45 years, we've locally offered services in roadway, planning and design, inspection, structures design, environmental services, geotechnical engineering, and more. In October 2016, our two Lexington office locations combined into one office located in the Beaumont Centre.

100% of this project's work will come from Kentucky and in many cases 95%+ of the work will come from our Lexington-based staff within the BGADD area. We employ 200 individuals in Lexington who may work on any of these contracts. Our leadership for this contract is 100% Lexington-based, with some specialized support coming from our Louisville office, as noted in the Resumes section. Although these team members' base of operations is outside of the Bluegrass Area Development District, our Louisville-based staff routinely works closely with Lexington staff and clients. We don't consider them as members of another office, but rather as an extension of our local team.

Subconsultant DBE team member Integrated Engineering is based on Lexington, Kentucky. Subconsultant veteran-owned team member, BA Engineers, is based in Louisville.

See Attachment 1 for more information.

7. DBE Involvement

Stantec strongly believes in supporting small, minority, and women-owned businesses by helping them grow, and we are committed to providing DBE firms with the opportunity to contribute to projects in a substantial way. Stantec has established excellent working relationships with a number of qualified DBE firms throughout Kentucky. Based on the scope of work for this project, Stantec has secured the services of DBE firms **Integrated Engineering** and **BA Engineers**. Both these firms bring a unique skill set to the Stantec team that fills a need or supplements Stantec's capabilities and each has demonstrated competence in their respective practice area.

To meet this contract's DBE goals, we've included **Integrated Engineering** on our team to provide drainage and surveying services. Integrated has quickly developed a reputation as a "go-to" company for drainage design, recently being selected by KYTC as one of only two firms to perform statewide drainage design services. The firm is a Lexington-based, Minority Owned Business Enterprise (MBE) and has teamed with us on LFUCG's Capacity Assurance Program and other infrastructure projects for Louisville MSD, Louisville Department of Public Works, Sanitation District No. 1 (SD1), and the Tennessee Valley Authority.

To meet this contract's Veteran-owned business goals, we have included **BA Engineers** on our team to support several services, including surveying and roadway design. We are currently working with BA on the Ohio River Megapark project (KYTC project) and the Main and Clay Streetscape project in Louisville as part of an on-call services agreement with the City of Louisville.

Our experience working together with each of these firms on LFUCG projects and other projects throughout the state means we can provide the professional services you need with no learning curve to slow us down. The following required forms for DBE/subconsultants are included in the Forms section of this submittal:

- DBE Participation Form
- MWDBE Quote Summary Form
- LFUCG Statement of Good Faith Efforts
- Attachment 1 (Project Team Locations)

Required Forms





January 11, 2016

Notice to Employees: US EQUAL OPPORTUNITY AND AFFIRMATIVE ACTION POLICIES

Stantec Consulting Services Inc. has implemented the following policies and procedures as part of its longstanding commitment to compliance with all applicable equal opportunity and affirmative action requirements.

Equal Opportunity Policy

Stantec is committed to maintaining a work environment that is free from any and all forms of unlawful discrimination and harassment. It is therefore the company's policy to prohibit discrimination and harassment against any applicant, employee, vendor, contractor, customer or client on the basis of race, color, religion, sex, national origin, age, disability, pregnancy, veteran status, genetic information, sexual orientation, gender identity, citizenship status, or any other basis prohibited by law. It is also the company's policy to prohibit any and all forms of retaliation against any individual who has complained of harassing or discriminatory conduct, or participated in a company or agency investigation into such complaints.

Affirmative Action Policy

Stantec is also a federal contractor subject to Executive Order 11246, Section 4212 of the Vietnam Era Veteran's Readjustment Assistance Act of 1974, as amended ("Section 4212") and Section 503 of the Rehabilitation Act of 1973, as amended ("Section 503"). As such Stantec is committed to take positive steps to implement the employment related aspects of the company's equal opportunity policy. Accordingly, it is Stantec's policy to take affirmative action to employ, advance in employment, and otherwise treat qualified minorities, women, protected veterans and individuals with disabilities without regard to their race/ethnicity, sex, veteran status, or physical or mental disability. Under this policy, Stantec also will provide reasonable accommodation to the known physical or mental limitations of an otherwise qualified employee or applicant for employment, unless the accommodation would impose undue hardship on the operation of the company's business.

The company's affirmative action policy also prohibits employees and applicants from being subjected to harassment, intimidation, threats, coercion, or discrimination because they have engaged in or may engage in (1) filing a complaint; (2) assisting or participating in an investigation, compliance review, hearing, or any other activity related to the administration of Section 503, Section 4212, or any other Federal, state or local law requiring equal opportunity for disabled persons or covered veterans; (3) opposing any act or practice made unlawful by Section 503 or Section 4212 and their implementing regulations, or any other Federal, state or local law requiring equal opportunity for disabled persons or covered veterans; or (4) exercising any other right protected by Section 503 or Section 4212 or their implementing regulations.

The non-confidential portions of the affirmative action program for women/minorities, individuals with disabilities and protected veterans shall be available for inspection upon request by any employee or applicant for employment during regular business hours.

Application of Equal Opportunity and Affirmative Action Policies

These policies apply whenever and wherever a company employee is performing a function of his or her job, including all Stantec locations, client worksites, and company-sponsored or client-sponsored business and social functions. The company's equal opportunity and affirmative action policies require that employment decisions be based only on valid job requirements, and extend to all terms, conditions, and privileges of employment including, but not limited to, recruitment, selection, compensation, benefit, training, promotion, and disciplinary actions.

Workplace Harassment, Including Sexual Harassment

A key component of the company's commitment to equal opportunity is zero tolerance for workplace harassment based on, or because of, an individual's race, color, religion, creed, sex, national origin, age, disability, pregnancy, veteran status, sexual orientation, gender identification, citizenship status, or any other reason prohibited by law. Such harassment, whether committed by company personnel or by clients, customers, vendors, or other individuals doing business with Stantec, will not be tolerated.



Prohibited harassment occurs when a supervisor, co-worker, or even a non-employee behaves or acts in such a way that creates a hostile work environment for another employee based on an individual's race, color, religion, creed, sex, national origin, age, disability, pregnancy, veteran status, sexual orientation, gender identity, citizenship status, or other protected characteristic. Stantec management is responsible for ensuring compliance with all aspects of this equal employment opportunity policy and for developing implementation strategies that promote its intent.

Zero Tolerance for Retaliation

Every employee is encouraged to come forward without fear of reprisal, as Stantec's equal opportunity and affirmative action policies prohibit any and all forms of retaliation against anyone who in good faith complains that these policies are not being followed, or who otherwise participates in a company or agency investigation into such complaints, even if sufficient evidence is not found to substantiate the complaint. If you believe that you have been subjected to retaliation, your complaint should be directed to one of the individuals identified below.

After receiving a complaint involving a violation of the company's equal opportunity or affirmative action policy, the company will investigate and take corrective action, as appropriate. Complaints and investigations will be kept strictly confidential to the maximum extent possible. No one, regardless of position or length of service, is exempt from these policies.

Obligations of Company Personnel

Stantec personnel have an obligation to contribute to a harassment and discrimination free workplace. Any employee who suffers or observes harassment or any other violation of this policy is strongly encouraged to notify one of the individuals identified below. Stantec will promptly and thoroughly investigate the alleged misconduct and, if a violation of this policy is found, will take immediate and appropriate corrective action.

Pay Transparency

Stantec will not discharge or in any other manner discriminate against employees or applicants because they have inquired about, discussed, or disclosed their own pay or the pay of another employee or applicant. Employees, however, who have access to the compensation information of other employees or applicants as a part of their essential job functions cannot disclose the pay of other employees or applicants to individuals who do not otherwise have access to compensation information, unless the disclosure is (a) in response to a formal complaint or charge, (b) in furtherance of an investigation, proceeding, hearing, or action, including an investigation conducted by the employer, or (c) consistent with the contractor's legal duty to furnish information.

Responsibility for Implementation

As CEO, I fully support our affirmative action program and the policy of Pay Transparency. I am committed to the implementation of the Stantec's equal opportunity and affirmative action policies. Stantec's affirmative action programs for minorities, women, people with disabilities, and protected veterans are available for review during regular business hours. The US EEO/AAP Compliance Manager and Human Resources are responsible for administering the affirmative action programs in the United States. These people are also responsible for conducting an analysis of all personnel actions to ensure equal opportunity and for submitting reports on the progress of our equal opportunity efforts. Employees or applicants who feel they have been discriminated against should contact them.

We request the support of all employees in accomplishing equal employment opportunity.

A handwritten signature in blue ink, appearing to read "Bob Gomes", is written over a horizontal line.

Bob Gomes, CEO, Stantec

WORKFORCE ANALYSIS FORM

Name of Organization: Stantec Consulting Services Inc.

Date: 10 / 11 / 2016

Categories	Total	White		Latino		Black		Other		Total	
		M	F	M	F	M	F	M	F	M	F
Administrators	29	25	1					1		27	2
Professionals	86	64	3		2			1	1	70	16
Operatives	2	2								2	
Laborers/Helpers	18	18								18	
Foremen											
Technicians	45	32	12	1						33	12
Protective Service											
Para-Professionals											
Office/Clerical	17	1	15			1				2	15
Skilled Craft	2	2								2	
Service/Maintenance											
Total:	199	144	44	5		3		2	1	154	45

Prepared by: Angie Jowers, Marketing Coordinator
Name & Title

Firm Submitting Proposal: **Stantec Consulting Services Inc.**

Complete Address: **3502 Beaumont Centre Circle, Lexington, KY 40513**
Street City Zip

Contact Name: **Glenn Hardin** Title: **Principal**

Telephone Number: **422-3000** Fax Number: **N/A**

Email address: **Glenn.Hardin@stantec.com**

AFFIDAVIT

Comes the Affiant, **Richard K Sutherland**, and after being first duly sworn, states under penalty of perjury as follows:

1. His/her name is **Richard K Sutherland** and he/she is the individual submitting the proposal or is the authorized representative of **Stantec Consulting Services Inc.**, the entity submitting the proposal (hereinafter referred to as "Proposer").

2. Proposer will pay all taxes and fees, which are owed to the Lexington-Fayette Urban County Government at the time the proposal is submitted, prior to award of the contract and will maintain a "current" status in regard to those taxes and fees during the life of the contract.

3. Proposer will obtain a Lexington-Fayette Urban County Government business license, if applicable, prior to award of the contract.

4. Proposer has authorized the Division of Central Purchasing to verify the above-mentioned information with the Division of Revenue and to disclose to the Urban County Council that taxes and/or fees are delinquent or that a business license has not been obtained.

5. Proposer has not knowingly violated any provision of the campaign finance laws of the Commonwealth of Kentucky within the past five (5) years and the award of a contract to the Proposer will not violate any provision of the campaign finance laws of the Commonwealth.

6. Proposer has not knowingly violated any provision of Chapter 25 of the Lexington-Fayette Urban County Government Code of Ordinances, known as "Ethics Act."

Continued on next page

7. Proposer acknowledges that "knowingly" for purposes of this Affidavit means, with respect to conduct or to circumstances described by a statute or ordinance defining an offense, that a person is aware or should have been aware that his conduct is of that nature or that the circumstance exists.

Further, Affiant sayeth naught.

Richard Sutherland

STATE OF Kentucky _____

COUNTY OF Fayette _____

The foregoing instrument was subscribed, sworn to and acknowledged before me
by Richard Sutherland on this the 9th day
of November, 2016.

My Commission expires: _____

NOTARY PUBLIC, STATE AT LARGE

EQUAL OPPORTUNITY AGREEMENT

The Law

- Title VII of the Civil Rights Act of 1964 (amended 1972) states that it is unlawful for an employer to discriminate in employment because of race, color, religion, sex, age (40-70 years) or national origin.
- Executive Order No. 11246 on Nondiscrimination under Federal contract prohibits employment discrimination by contractor and sub-contractor doing business with the Federal Government or recipients of Federal funds. This order was later amended by Executive Order No. 11375 to prohibit discrimination on the basis of sex.
- Section 503 of the Rehabilitation Act of 1973 states:

The Contractor will not discriminate against any employee or applicant for employment because of physical or mental handicap.

- Section 2012 of the Vietnam Era Veterans Readjustment Act of 1973 requires Affirmative Action on behalf of disabled veterans and veterans of the Vietnam Era by contractors having Federal contracts.
- Section 206(A) of Executive Order 12086, Consolidation of Contract Compliance Functions for Equal Employment Opportunity, states:

The Secretary of Labor may investigate the employment practices of any Government contractor or sub-contractor to determine whether or not the contractual provisions specified in Section 202 of this order have been violated.

The Lexington-Fayette Urban County Government practices Equal Opportunity in recruiting, hiring and promoting. It is the Government's intent to affirmatively provide employment opportunities for those individuals who have previously not been allowed to enter into the mainstream of society. Because of its importance to the local Government, this policy carries the full endorsement of the Mayor, Commissioners, Directors and all supervisory personnel. In following this commitment to Equal Employment Opportunity and because the Government is the benefactor of the Federal funds, it is both against the Urban County Government policy and illegal for the Government to let contracts to companies which knowingly or unknowingly practice discrimination in their employment practices. Violation of the above mentioned ordinances may cause a contract to be canceled and the contractors may be declared ineligible for future consideration.

Please sign this statement in the appropriate space acknowledging that you have read and understand the provisions contained herein. Return this document as part of your application packet.

Bidders

I/We agree to comply with the Civil Rights Laws listed above that govern employment rights of minorities, women, Vietnam veterans, handicapped and aged persons.



Signature

Stantec Consulting Services inc.

Name of Business



LFUCG MWDBE PARTICIPATION FORM

Bid/RFP/Quote Reference # RFQ 38-2016

The MWDBE and/or veteran subcontractors listed have agreed to participate on this Bid/RFP/Quote. If any substitution is made or the total value of the work is changed prior to or after the job is in progress, it is understood that those substitutions must be submitted to Central Purchasing for approval immediately. **Failure to submit a completed form may cause rejection of the bid.**

MWDBE Company, Name, Address, Phone, Email	MBE WBE or DBE	Work to be Performed	Total Dollar Value of the Work	% Value of Total Contract
1. Integrated Engineering 166 Prosperous Place Suite 220 Lexington, KY 40509 Harsha@int-engineering.com 859-368-0145	MBE/DBE	Surveying Drainage	TBD by assignment	
2. BA Engineers 3407 Stony Spring Circle Louisville, KY 40220 rstorm@bryant-engrs.com 502-208-1512	MBE/DBE (veteran owned)	Roadway design Surveying Drainage Traffic	TBD by assignment	
3.				
4.				

The undersigned company representative submits the above list of MWDBE firms to be used in accomplishing the work contained in this Bid/RFP/Quote. Any misrepresentation may result in the termination of the contract and/or be subject to applicable Federal and State laws concerning false statements and false claims.

Stantec Consulting Services Inc.
Company

Richard Sutherland

Company Representative

November 10, 2016
Date

Richard K. Sutherland, Senior Principal
Title



NOT REQUIRED

LFUCG MWDBE SUBSTITUTION FORM

Bid/RFP/Quote Reference # REQ 38-2016

The substituted MWDBE and/or veteran subcontractors listed below have agreed to participate on this Bid/RFP/Quote. These substitutions were made prior to or after the job was in progress. These substitutions were made for reasons stated below and are now being submitted to Central Purchasing for approval. By the authorized signature of a representative of our company, we understand that this information will be entered into our file for this project.

SUBSTITUTED MWDBE Company Name, Address, Phone, Email	MWDBE Formally Contracted/ Name, Address, Phone, Email	Work to Be Performed	Reason for the Substitution	Total Dollar Value of the Work	% Value of Total Contract
1.					
2.					
3.					
4.					

The undersigned acknowledges that any misrepresentation may result in termination of the contract and/or be subject to applicable Federal and State laws concerning false statements and false claims.

Company

Company Representative

Date

Title



MWDBE QUOTE SUMMARY FORM

Bid/RFP/Quote Reference # RFQ 38-2016

The undersigned acknowledges that the minority and/or veteran subcontractors listed on this form did submit a quote to participate on this project. Failure to submit this form may cause rejection of the bid.

Company Name Stantec	Contact Person Glenn Hardin
Address/Phone/Email 3052 Beaumont Centre Circle Lexington KY 40513 859-422-3000 Glenn.Hardin@stantec.com	Bid Package / Bid Date RFQ 38-2016 / November 10, 2016

MWDBE Company Address	Contact Person	Contact Information (work phone, Email, cell)	Date Contacted	Services to be performed	Method of Communication (email, phone meeting, ad, event etc)	Total dollars \$\$ Do Not Leave Blank (Attach Documentation)	MBE * AA HA AS NA Female	Veteran
Integrated Engineering 166 Prosperous Place Suite 220 Lexington, KY 40509 Harsha@int-engineering.com 859-368-0145			10/31/16	Drainage	Email	N/A - on call	MBE	No
BA Engineers 3407 Stony Spring Circle Louisville, KY 40220 rstorm@bryant-engrs.com 502-208-1512			10/31/16	Multiple	Email	N/A - on call	MBE	Yes

(MBE designation / AA=African American / HA= Hispanic American/AS = Asian American/Pacific Islander/ NA= Native American)

The undersigned acknowledges that all information is accurate. Any misrepresentation may result in termination of the contract and/or be subject to applicable Federal and State laws concerning false statements and claims.

Stantec Consulting Services Inc.
Company
November 10, 2016
Date

Richard Sutherland

Company Representative
Richard K. Sutherland, Senior Principal
Title



NOT REQUIRED

LFUCG SUBCONTRACTOR MONTHLY PAYMENT REPORT

The LFUCG has a 10% goal plan adopted by city council to increase the participation of minority and women owned businesses in the procurement process. The LFUCG also has a 3% goal plan adopted by cited council to increase the participation of veteran owned businesses in the procurement process. In order to measure that goal LFUCG will track spending with MWDBE and Veteran contractors on a monthly basis. By the signature below of an authorized company representative, you certify that the information is correct, and that each of the representations set forth below is true. Any misrepresentation may result in termination of the contract and/or prosecution under applicable Federal and State laws concerning false statements and false claims. Please submit this form monthly to the Division of Central Purchasing/ 200 East Main Street / Room 338 / Lexington, KY 40507.

Bid/RFP/Quote # _____

Total Contract Amount Awarded to Prime Contractor for this Project _____

Project Name/ Contract #	Work Period/ From:	To:
Company Name:	Address:	
Federal Tax ID:	Contact Person:	

Subcontractor Vendor ID (name, address, phone, email)	Description of Work	Total Subcontract Amount	% of Total Contract Awarded to Prime for this Project	Total Amount Paid for this Period	Purchase Order number for subcontractor work (please attach PO)	Scheduled Project Start Date	Scheduled Project End Date

By the signature below of an authorized company representative, you certify that the information is correct, and that each of the representations set forth below is true. Any misrepresentations may result in the termination of the contract and/or prosecution under applicable Federal and State laws concerning false statements and false claims.

Company

Company Representative

Date

Title

LFUCG STATEMENT OF GOOD FAITH EFFORTS

Bid/RFP/Quote # REQ #38-2016

By the signature below of an authorized company representative, we certify that we have utilized the following Good Faith Efforts to obtain the maximum participation by MWDBE and Veteran-Owned business enterprises on the project and can supply the appropriate documentation.

Advertised opportunities to participate in the contract in at least two (2) publications of general circulation media; trade and professional association publications; small and minority business or trade publications; and publications or trades targeting minority, women and disadvantaged businesses not less than fifteen (15) days prior to the deadline for submission of bids to allow MWDBE firms and Veteran-Owned businesses to participate.

Included documentation of advertising in the above publications with the bidders good faith efforts package

Attended LFUCG Central Purchasing Economic Inclusion Outreach event

Attended pre-bid meetings that were scheduled by LFUCG to inform MWDBEs and/or Veteran-Owned Businesses of subcontracting opportunities

Sponsored Economic Inclusion event to provide networking opportunities for prime contractors and MWDBE firms and Veteran-Owned businesses

Requested a list of MWDBE and/or Veteran subcontractors or suppliers from LFUCG and showed evidence of contacting the companies on the list(s).

Contacted organizations that work with MWDBE companies for assistance in finding certified MWDBE firms and Veteran-Owned businesses to work on this project. Those contacted and their responses should be a part of the bidder's good faith efforts documentation.

Sent written notices, by certified mail, email or facsimile, to qualified, certified MWDBEs soliciting their participation in the contract not less than seven (7) days prior to the deadline for submission of bids to allow them to participate effectively.

Followed up initial solicitations by contacting MWDBEs and Veteran-Owned businesses to determine their level of interest.

Provided the interested MWDBE firm and/or Veteran-Owned business with adequate and timely information about the plans, specifications, and requirements of the contract.

Selected portions of the work to be performed by MWDBE firms and/or Veteran-Owned businesses in order to increase the likelihood of meeting the

contract goals. This includes, where appropriate, breaking out contract work items into economically feasible units to facilitate MWDBE and Veteran participation, even when the prime contractor may otherwise perform these work items with its own workforce

 Negotiated in good faith with interested MWDBE firms and Veteran-Owned businesses not rejecting them as unqualified without sound reasons based on a thorough investigation of their capabilities. Any rejection should be so noted in writing with a description as to why an agreement could not be reached.

 Included documentation of quotations received from interested MWDBE firms and Veteran-Owned businesses which were not used due to uncompetitive pricing or were rejected as unacceptable and/or copies of responses from firms indicating that they would not be submitting a bid.

 Bidder has to submit sound reasons why the quotations were considered unacceptable. The fact that the bidder has the ability and/or desire to perform the contract work with its own forces will not be considered a sound reason for rejecting a MWDBE and/or Veteran-Owned business's quote. Nothing in this provision shall be construed to require the bidder to accept unreasonable quotes in order to satisfy MWDBE and Veteran goals.

 Made an effort to offer assistance to or refer interested MWDBE firms and Veteran-Owned businesses to obtain the necessary equipment, supplies, materials, insurance and/or bonding to satisfy the work requirements of the bid proposal

 Made efforts to expand the search for MWBE firms and Veteran-Owned businesses beyond the usual geographic boundaries.

Other--any other evidence that the bidder submits which may show that the bidder has made reasonable good faith efforts to include MWDBE **and Veteran participation.**

NOTE: Failure to submit any of the documentation requested in this section may be cause for rejection of bid. Bidders may include any other documentation deemed relevant to this requirement which is subject to approval by the MBE Liaison. Documentation of Good Faith Efforts must be submitted with the Bid, if the participation Goal is not met.

The undersigned acknowledges that all information is accurate. Any misrepresentations may result in termination of the contract and/or be subject to applicable Federal and State laws concerning false statements and claims.

Stantec Consulting Services Inc.
Company
November 10, 2016
Date


Richard K. Sutherland, Senior Principal
Company Representative
Title

Project Team Location(s)

Prime Consultant	Location (City, State)	Date Office Established	Total Number of Employees	No.of Employees expected to work on DOE projects
Headquarters	N/A as defined	1954	22,000	0
Local Office	Lexington, KY	1969	200	50
PM Location	Lexington, KY			
SubConsultants				
Name:	BA Engineers			
Service Provided	Roadway, survey, etc			
Headquarters	Boston, MA	1976	69	6
Local Office	Louisville, KY	2005	9	2
Name:	Integrated Engineering			
Service Provided	Drainage, survey			
Headquarters	Lexington, KY	2006	31	6
Local Office	Lexington, KY	2006	31	6
Name:				
Service Provided				
Headquarters				
Local Office				

Notes:

1. "Headquarters" refers to the corporate office that provides project support to the local office, if applicable. If support comes from multiple locations, use the blank spaces in the form to provide relevant information.
2. Listing of sub-consultants is optional and should only be provided if the prime consultant considers the sub-consultant(s) services to be essential to meeting the required qualifications. In this event, documentation from the subconsultant(s) shall be submitted in the SOQ that provides a commitment to be a part of the prime consultant's team in providing the stated services. In such cases, for the purpose of evaluating the proposals, committed sub-consultants will be considered to be part of the prime consultant's workforce. Prime consultants face potential disqualification from future work if DOE finds that the identified sub-consultants are not being utilized to deliver assigned workproducts.



CERTIFICATE OF LIABILITY INSURANCE

5/1/2017

DATE (MM/DD/YYYY)

8/2/2016

THIS CERTIFICATE IS ISSUED AS A MATTER OF INFORMATION ONLY AND CONFERS NO RIGHTS UPON THE CERTIFICATE HOLDER. THIS CERTIFICATE DOES NOT AFFIRMATIVELY OR NEGATIVELY AMEND, EXTEND OR ALTER THE COVERAGE AFFORDED BY THE POLICIES BELOW. THIS CERTIFICATE OF INSURANCE DOES NOT CONSTITUTE A CONTRACT BETWEEN THE ISSUING INSURER(S), AUTHORIZED REPRESENTATIVE OR PRODUCER, AND THE CERTIFICATE HOLDER.

IMPORTANT: If the certificate holder is an ADDITIONAL INSURED, the policy(ies) must have ADDITIONAL INSURED provisions or be endorsed. If SUBROGATION IS WAIVED, subject to the terms and conditions of the policy, certain policies may require an endorsement. A statement on this certificate does not confer rights to the certificate holder in lieu of such endorsement(s).

PRODUCER Lockton Companies 444 W. 47th Street, Suite 900 Kansas City MO 64112-1906 (816) 960-9000	CONTACT NAME:	FAX (A/C, No):
	PHONE (A/C, No, Ext):	
	E-MAIL ADDRESS:	
INSURER(S) AFFORDING COVERAGE		NAIC #
INSURER A : Zurich American Insurance Company		16535
INSURER B : Sentry Insurance a Mutual Company		24988
INSURER C : American Guarantee and Liab. Ins. Co.		26247
INSURER D :		
INSURER E :		
INSURER F :		

INSURED
1415077 STANTEC CONSULTING SERVICES INC.
8211 SOUTH 48TH STREET
PHOENIX AZ 85044

COVERAGES **CERTIFICATE NUMBER:** 14193567 **REVISION NUMBER:** XXXXXXXX

THIS IS TO CERTIFY THAT THE POLICIES OF INSURANCE LISTED BELOW HAVE BEEN ISSUED TO THE INSURED NAMED ABOVE FOR THE POLICY PERIOD INDICATED. NOTWITHSTANDING ANY REQUIREMENT, TERM OR CONDITION OF ANY CONTRACT OR OTHER DOCUMENT WITH RESPECT TO WHICH THIS CERTIFICATE MAY BE ISSUED OR MAY PERTAIN, THE INSURANCE AFFORDED BY THE POLICIES DESCRIBED HEREIN IS SUBJECT TO ALL THE TERMS, EXCLUSIONS AND CONDITIONS OF SUCH POLICIES. LIMITS SHOWN MAY HAVE BEEN REDUCED BY PAID CLAIMS.

INSR LTR	TYPE OF INSURANCE	ADDL INSD	SUBR WVD	POLICY NUMBER	POLICY EFF (MM/DD/YYYY)	POLICY EXP (MM/DD/YYYY)	LIMITS
A	<input checked="" type="checkbox"/> COMMERCIAL GENERAL LIABILITY <input type="checkbox"/> CLAIMS-MADE <input checked="" type="checkbox"/> OCCUR <input checked="" type="checkbox"/> CONTRACTUAL/CROSS <input type="checkbox"/> XCU COVERED GEN'L AGGREGATE LIMIT APPLIES PER: <input type="checkbox"/> POLICY <input checked="" type="checkbox"/> PRO-JECT <input checked="" type="checkbox"/> LOC OTHER:	N	N	GLO5415704	5/1/2016	5/1/2017	EACH OCCURRENCE \$ 2,000,000 DAMAGE TO RENTED PREMISES (Ea occurrence) \$ 300,000 MED EXP (Any one person) \$ 10,000 PERSONAL & ADV INJURY \$ 2,000,000 GENERAL AGGREGATE \$ 4,000,000 PRODUCTS - COMP/OP AGG \$ 2,000,000 \$
B B B	AUTOMOBILE LIABILITY <input checked="" type="checkbox"/> ANY AUTO <input type="checkbox"/> OWNED AUTOS ONLY <input type="checkbox"/> HIRED AUTOS ONLY <input type="checkbox"/> SCHEDULED AUTOS <input type="checkbox"/> NON-OWNED AUTOS ONLY	N	N	90-17043-08 (AOS) 90-17043-09 (MA) 90-17043-10 (CA)	5/1/2016 5/1/2016 5/1/2016	5/1/2017 5/1/2017 5/1/2017	COMBINED SINGLE LIMIT (Ea accident) \$ 1,000,000 BODILY INJURY (Per person) \$ XXXXXXXX BODILY INJURY (Per accident) \$ XXXXXXXX PROPERTY DAMAGE (Per accident) \$ XXXXXXXX \$ XXXXXXXX
C	<input checked="" type="checkbox"/> UMBRELLA LIAB <input checked="" type="checkbox"/> OCCUR <input checked="" type="checkbox"/> EXCESS LIAB <input type="checkbox"/> CLAIMS-MADE <input type="checkbox"/> DED <input checked="" type="checkbox"/> RETENTION \$ 10,000	N	N	AUC918463701	5/1/2016	5/1/2017	EACH OCCURRENCE \$ 5,000,000 AGGREGATE \$ 5,000,000 \$ XXXXXXXX
B B B	WORKERS COMPENSATION AND EMPLOYERS' LIABILITY <input type="checkbox"/> Y <input checked="" type="checkbox"/> N <input type="checkbox"/> ANY PROPRIETOR/PARTNER/EXECUTIVE OFFICER/MEMBER EXCLUDED? (Mandatory in NH) If yes, describe under DESCRIPTION OF OPERATIONS below	N/A	N	90-17043-06 (AOS) 90-17043-07 (HI) EXCEPT FOR OH ND WA WY	5/1/2016 5/1/2016	5/1/2017 5/1/2017	<input checked="" type="checkbox"/> PER STATUTE <input type="checkbox"/> OTH-ER E.L. EACH ACCIDENT \$ 1,000,000 E.L. DISEASE - EA EMPLOYEE \$ 1,000,000 E.L. DISEASE - POLICY LIMIT \$ 1,000,000

DESCRIPTION OF OPERATIONS / LOCATIONS / VEHICLES (ACORD 101, Additional Remarks Schedule, may be attached if more space is required)

CERTIFICATE HOLDER 14193567 TO WHOM IT MAY CONCERN	CANCELLATION SHOULD ANY OF THE ABOVE DESCRIBED POLICIES BE CANCELLED BEFORE THE EXPIRATION DATE THEREOF, NOTICE WILL BE DELIVERED IN ACCORDANCE WITH THE POLICY PROVISIONS.
	AUTHORIZED REPRESENTATIVE



CERTIFICATE OF LIABILITY INSURANCE

DATE (MM/DD/YYYY)
10/1/2017 8/19/2016

THIS CERTIFICATE IS ISSUED AS A MATTER OF INFORMATION ONLY AND CONFERS NO RIGHTS UPON THE CERTIFICATE HOLDER. THIS CERTIFICATE DOES NOT AFFIRMATIVELY OR NEGATIVELY AMEND, EXTEND OR ALTER THE COVERAGE AFFORDED BY THE POLICIES BELOW. THIS CERTIFICATE OF INSURANCE DOES NOT CONSTITUTE A CONTRACT BETWEEN THE ISSUING INSURER(S), AUTHORIZED REPRESENTATIVE OR PRODUCER, AND THE CERTIFICATE HOLDER.

IMPORTANT: If the certificate holder is an ADDITIONAL INSURED, the policy(ies) must have ADDITIONAL INSURED provisions or be endorsed. If SUBROGATION IS WAIVED, subject to the terms and conditions of the policy, certain policies may require an endorsement. A statement on this certificate does not confer rights to the certificate holder in lieu of such endorsement(s).

PRODUCER Lockton Companies 444 W. 47th Street, Suite 900 Kansas City MO 64112-1906 (816) 960-9000	CONTACT NAME: PHONE (A/C, No, Ext): _____ FAX (A/C, No): _____ E-MAIL ADDRESS: _____
	INSURER(S) AFFORDING COVERAGE
	INSURER A: Lloyds of London
	INSURER B: AIG Specialty Insurance Company
	INSURER C:
	INSURER D:

INSURED 1414100 STANTEC CONSULTING SERVICES INC. 8211 SOUTH 48TH STREET PHOENIX AZ 85044	NAIC # 26883
	INSURER E:
	INSURER F:

COVERAGES **CERTIFICATE NUMBER: 14182571** **REVISION NUMBER: XXXXXXXX**

THIS IS TO CERTIFY THAT THE POLICIES OF INSURANCE LISTED BELOW HAVE BEEN ISSUED TO THE INSURED NAMED ABOVE FOR THE POLICY PERIOD INDICATED. NOTWITHSTANDING ANY REQUIREMENT, TERM OR CONDITION OF ANY CONTRACT OR OTHER DOCUMENT WITH RESPECT TO WHICH THIS CERTIFICATE MAY BE ISSUED OR MAY PERTAIN, THE INSURANCE AFFORDED BY THE POLICIES DESCRIBED HEREIN IS SUBJECT TO ALL THE TERMS, EXCLUSIONS AND CONDITIONS OF SUCH POLICIES. LIMITS SHOWN MAY HAVE BEEN REDUCED BY PAID CLAIMS.

INSR LTR	TYPE OF INSURANCE	ADDL INSD	SUBR WVD	POLICY NUMBER	POLICY EFF (MM/DD/YYYY)	POLICY EXP (MM/DD/YYYY)	LIMITS
	COMMERCIAL GENERAL LIABILITY <input type="checkbox"/> CLAIMS-MADE <input type="checkbox"/> OCCUR GEN'L AGGREGATE LIMIT APPLIES PER: <input type="checkbox"/> POLICY <input type="checkbox"/> PRO-JECT <input type="checkbox"/> LOC OTHER: _____			NOT APPLICABLE			EACH OCCURRENCE \$ XXXXXXXX DAMAGE TO RENTED PREMISES (Ea occurrence) \$ XXXXXXXX MED EXP (Any one person) \$ XXXXXXXX PERSONAL & ADV INJURY \$ XXXXXXXX GENERAL AGGREGATE \$ XXXXXXXX PRODUCTS - COM/PO/ AGG \$ XXXXXXXX
	AUTOMOBILE LIABILITY <input type="checkbox"/> ANY AUTO OWNED AUTOS ONLY <input type="checkbox"/> HIRED AUTOS ONLY <input type="checkbox"/> SCHEDULED AUTOS <input type="checkbox"/> NON-OWNED AUTOS ONLY			NOT APPLICABLE			COMBINED SINGLE LIMIT (Ea accident) \$ XXXXXXXX BODILY INJURY (Per person) \$ XXXXXXXX BODILY INJURY (Per accident) \$ XXXXXXXX PROPERTY DAMAGE (Per accident) \$ XXXXXXXX
	UMBRELLA LIAB <input type="checkbox"/> OCCUR EXCESS LIAB <input type="checkbox"/> CLAIMS-MADE DED RETENTION \$			NOT APPLICABLE			EACH OCCURRENCE \$ XXXXXXXX AGGREGATE \$ XXXXXXXX
	WORKERS COMPENSATION AND EMPLOYERS' LIABILITY ANY PROPRIETOR/PARTNER/EXECUTIVE OFFICER/MEMBER EXCLUDED? (Mandatory in NH) If yes, describe under DESCRIPTION OF OPERATIONS below	Y/N	N/A	NOT APPLICABLE			PER STATUTE OTHER E.L. EACH ACCIDENT \$ XXXXXXXX E.L. DISEASE - EA EMPLOYEE \$ XXXXXXXX E.L. DISEASE - POLICY LIMIT \$ XXXXXXXX
A A B	Professional Liab Contractors Pollution Liab	N	N	GLOPR1601673 NO RETROACTIVE DATE CPO8085428	10/1/2016	10/1/2017	\$3,000,000 PER CLAIM/AGG INCLUSIVE OF COSTS \$3,000,000 PER LOSS/AGG

DESCRIPTION OF OPERATIONS / LOCATIONS / VEHICLES (ACORD 101, Additional Remarks Schedule, may be attached if more space is required)
CONSULTING

CERTIFICATE HOLDER 14182571 TO WHOM IT MAY CONCERN	CANCELLATION SHOULD ANY OF THE ABOVE DESCRIBED POLICIES BE CANCELLED BEFORE THE EXPIRATION DATE THEREOF, NOTICE WILL BE DELIVERED IN ACCORDANCE WITH THE POLICY PROVISIONS.
	AUTHORIZED REPRESENTATIVE 