

# SNOW PLAN UPDATE

## WINTER 2025-2026

*Environmental Quality & Public Works Committee*

*October 7, 2025*

*Rob Allen, Director of Streets & Roads*



**LEXINGTON**





# Presentation Overview

- Goals
- Snow Season Expense Comparison
- Status of Salt
- Route Rankings
- Service Levels
- Route changes explanation
- Changes to the snow plan 2025-26
- Coordination
- Sidewalk Snow Removal
- Staffing
- Projected Schedule for Plan Finalization





# 2025-26 Snow Plan

## Goals Service Level 1

- Complete [Roadway Snow Plan](#) routes within 48 hours of precipitation *ending*.
- Complete [Sidewalk Snow Plan](#) routes within 96 hours of precipitation *ending*.

**Service Levels 2 & 3 will require more time.**



# Snow Season Expense Comparison

Fiscal Year	Salt Expense*	Salt Purchased (Tons)	Salt price (per ton)	Mobilizations Full / Partial
2021	\$930,161	1,745	\$88.99	2/6
2022	\$1,025,561	8,038 1,000(rock)	\$114.00	7/2
2023	\$265,489	12,610 (7,500WH)	\$90.25	6/5
2024	\$461,128	5,048	\$103.95	5/5
2025	\$1,291,195	9,100	\$103.95	14/9
2026	-	-	\$104.00	-

\* Does not include personnel

**Full mobilization** = All drivers and all supervisors and may include multiple shifts and days.

**Partial mobilization** = 1 supervisor and 1 driver or fewer per area.





## Salt Supply

**Currently on hand → 8,800 tons**

**Current Storage Capacity → 11,500 tons total**

**4,500 tons at Old Frankfort Pike**

**4,300 tons at West Hickman WWTP**

**FY26 budget → \$1,168,804 = 11,238 additional tons if needed.**

**FY26 salt cost → \$104.00/ton (In FY25, \$103.95/ton)**





# Routes

**Rank 1** -- primary **Arteries** in and out of the city. (*Nicholasville Rd, Man O' War Blvd, etc.*)  
298 lane miles\*

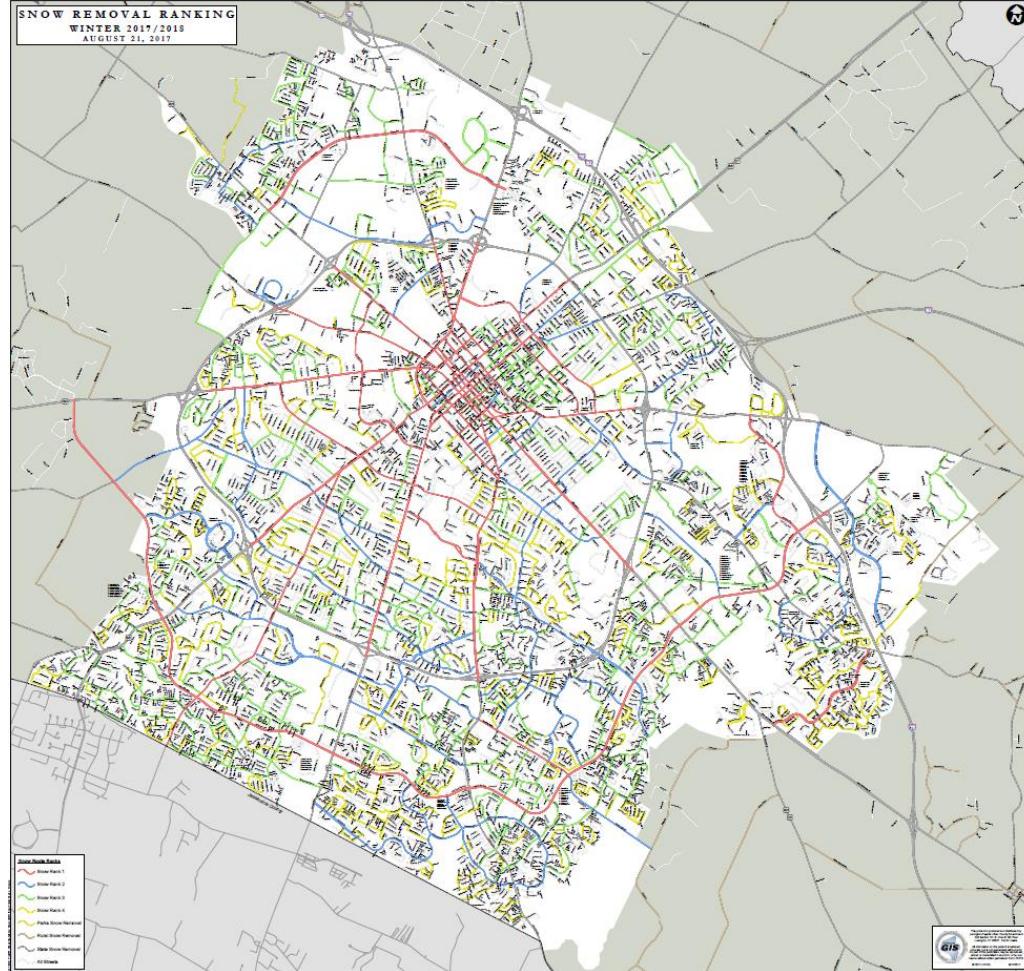
**Rank 2** -- **Major** connecting streets. (*Lane Allen Rd, Loudon Ave, etc.*) 209 lane miles\*

**Rank 3** -- **Collector** routes. (*Sandersville Rd, Old Todds Rd, etc.*) 360 lane miles\*

**Rank 4** -- **Local**, which allow residents access to the connecting roads (*Dunkirk Dr, Glendover Rd, etc.*) 330 lane miles\*

\*lane miles:

1 mile of a 2-lane road = 2 lane-miles





# Service Levels

## Level 1 → 1" to 4" of accumulation

- Operate under current plan (Rank 1-4 streets)

## Level 2 → 5" to 8" of accumulation

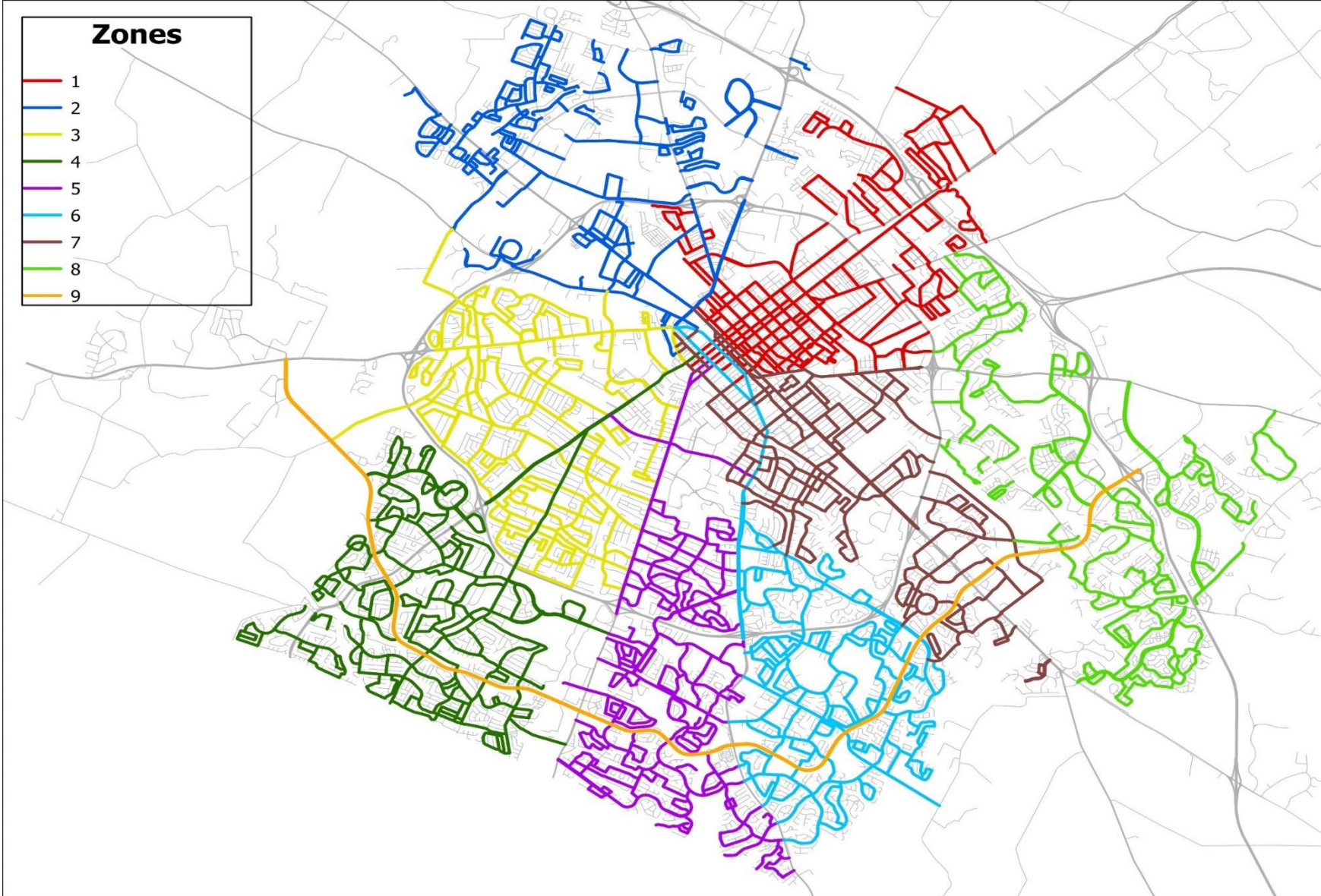
- In addition to the snow routes, we will add unranked residential collector streets that connect to collector streets.

## Level 3 → 8" of accumulation and above

- we will attempt to plow as many streets as possible, resources permitting.







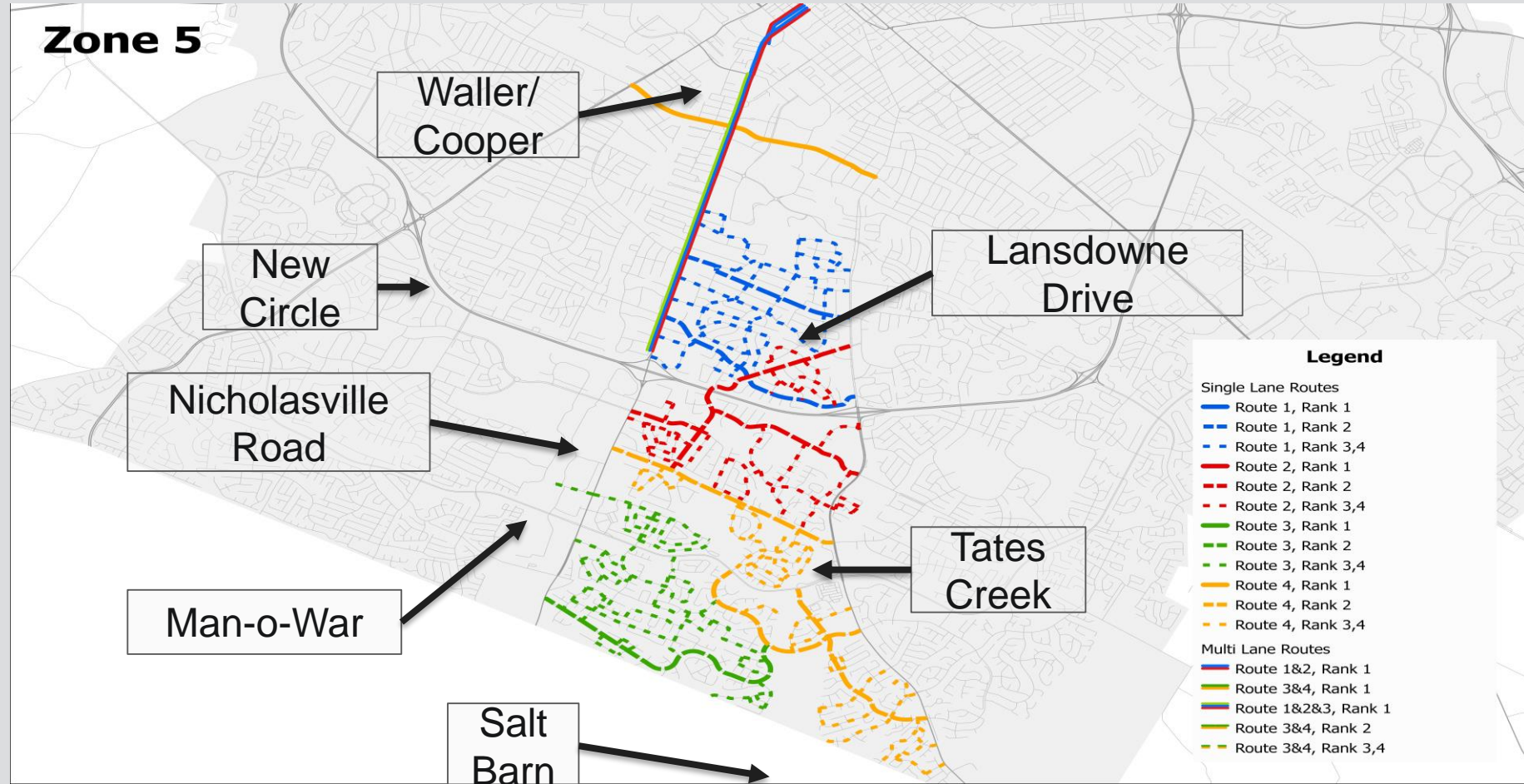
**LEXINGTON**





# Route assignment example:

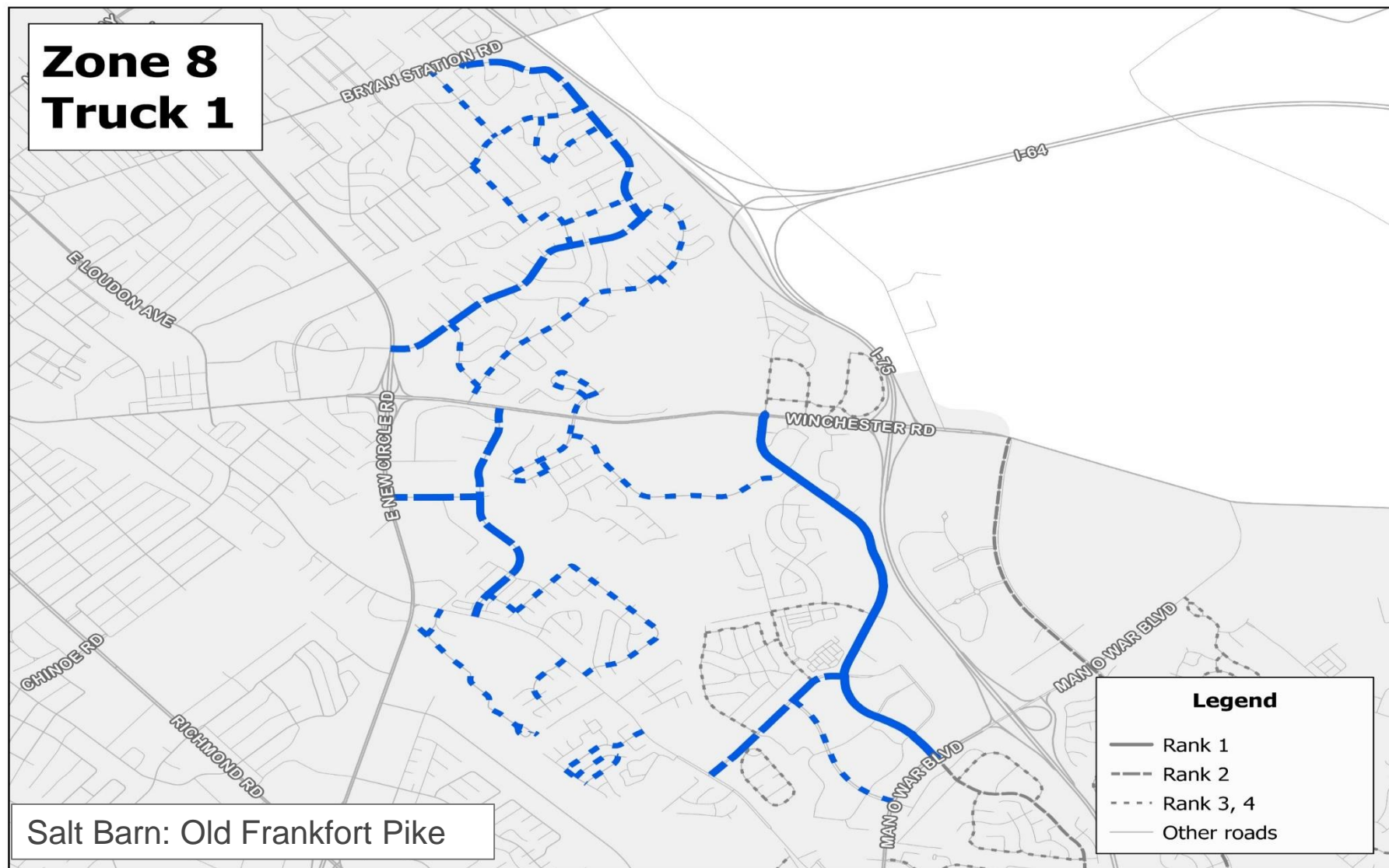
Zone 5: trucks using salt from from West Hickman, 4 routes per zone



SNOW PLAN UPDATE

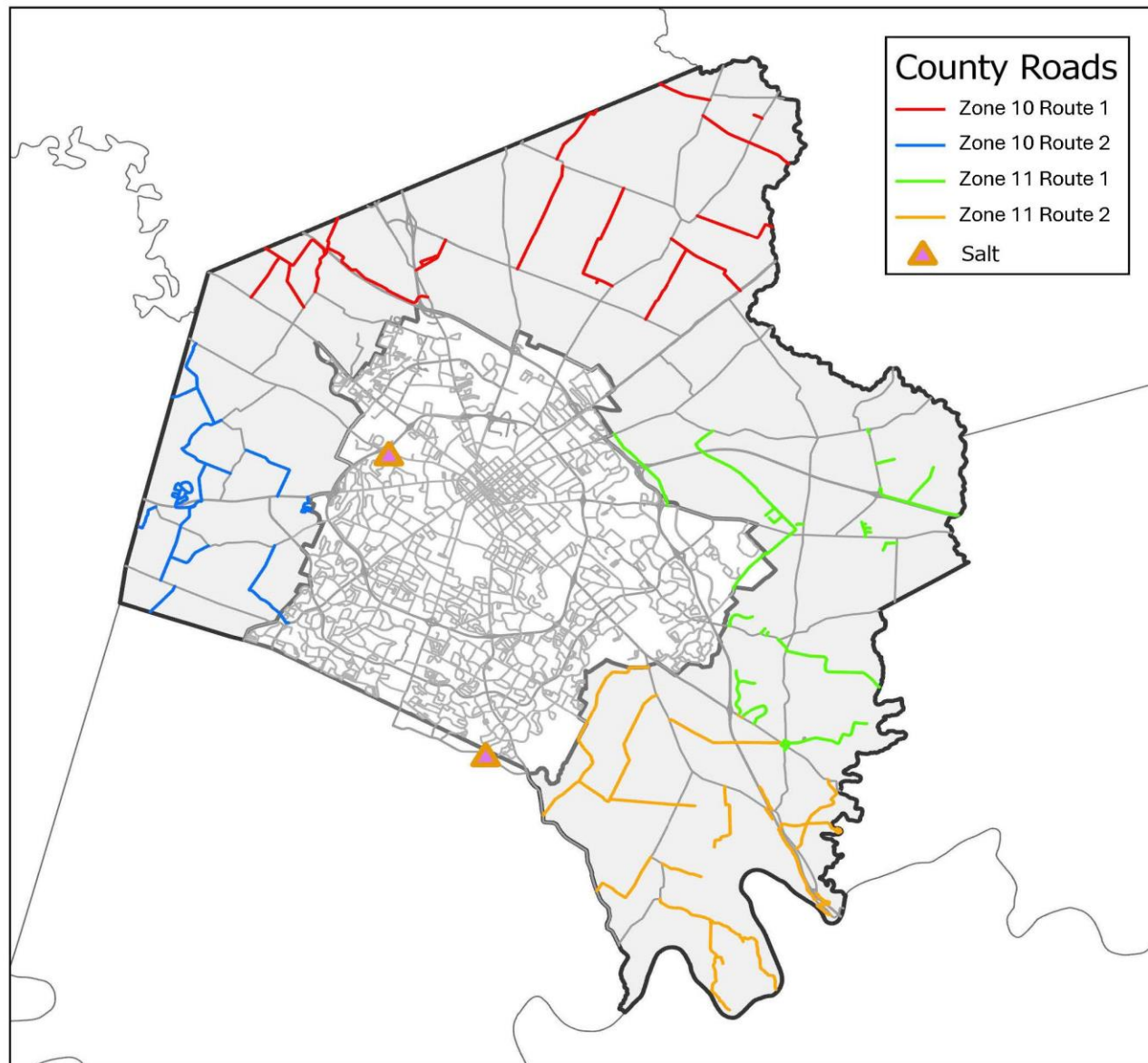


LEXINGTON



LEXINGTON





LEXINGTON







## Changes for 2025/26 Snow Season

- 3 Tanker trucks added to fleet for brine and additives to pre-treat when possible. (\$1,086,594 investment)
- Custom blender and truck fill added to West Hickman Brine station.
- 3 new dump trucks replacing older vehicles. (\$837,483 investment)
- 3 additional contractor dump trucks (8 total) to assist with neighborhood routes and vacancies. (Annual upfit cost per truck \$47,849.00 ; \$200 hourly rate)





## Changes for 2025/26 Snow Season (cont.)

- Landscape contractor under contract for up to 8 trucks for service levels 2 and 3 if needed. (only 1 bidder, Holt Landscape)
- Additional roads added to address gaps and growth.
- 3 new fully-outfitted pieces of equipment + 2 additional attachments for two existing tractors for sidewalk snow removal. (\$134,700 investment)
- Added LexPark to planning team.
- EQPW PIO working on examples of treatment to manage expectations of end results.
- FCPS to provide data for current bus routes.





## Coordination in Case of Emergency

- Informal assistance/support agreement with KYTC District #7.
- Updated emergency contact information across divisions and stakeholders for rapid internal communication.
- Consensus across divisions and agencies for mutual aid and support in the event of staffing shortages.
- Commissioner will serve as coordinator of rapid staff reallocation as needed.







## Sidewalk Snow Removal

- Primary execution by combined divisions of Environmental Services, Parks, Fire, and Facilities.
- Over 84 miles of sidewalks serviced with full completion of the plan.

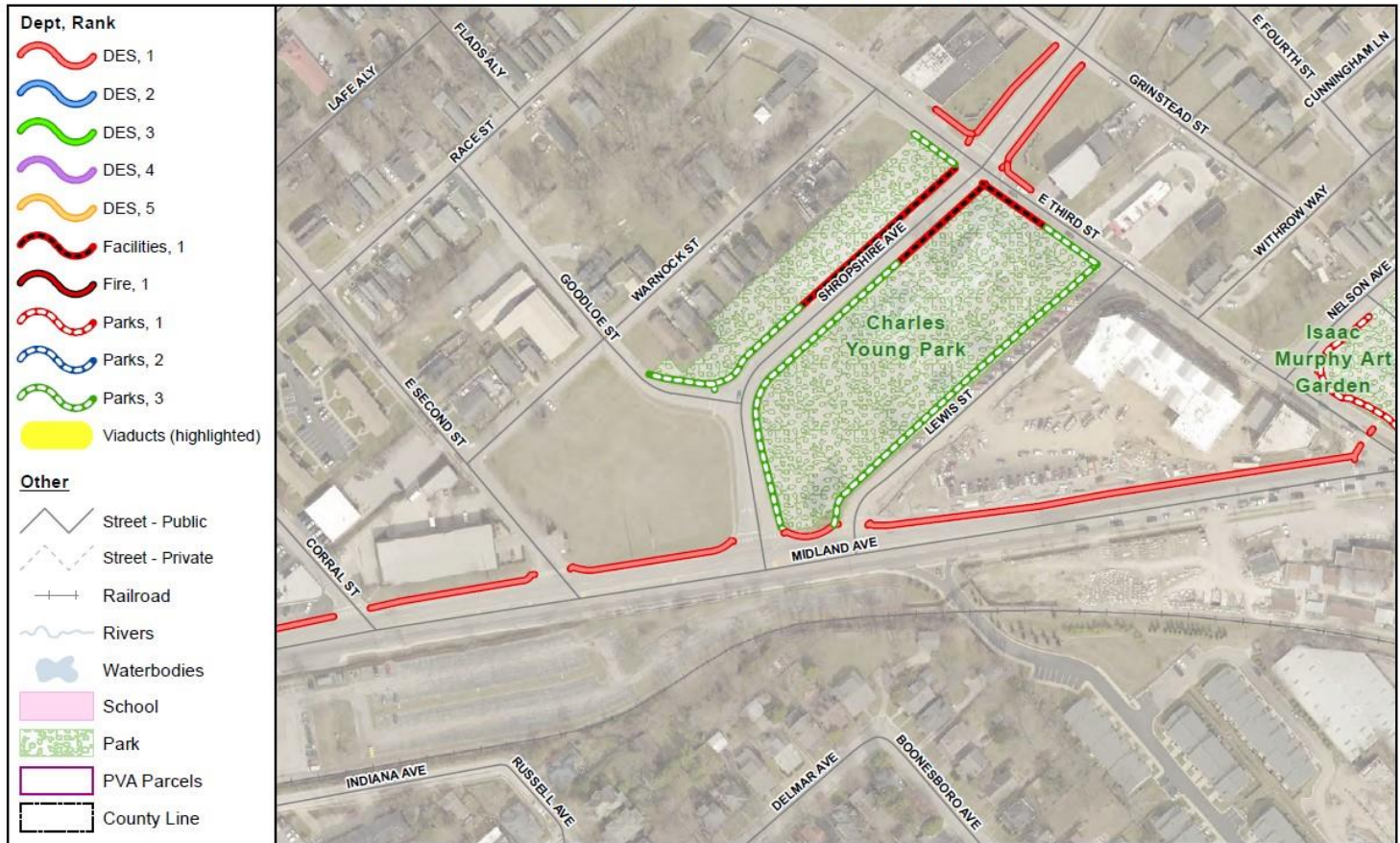




# Sidewalk Snow Removal

- Snow accumulation of  $\geq 1$ " triggers sidewalk clearing.
- Sidewalk clearing begins **after** snow stops.
- Must coordinate timing with road crews to minimize re-coverage after clearance.

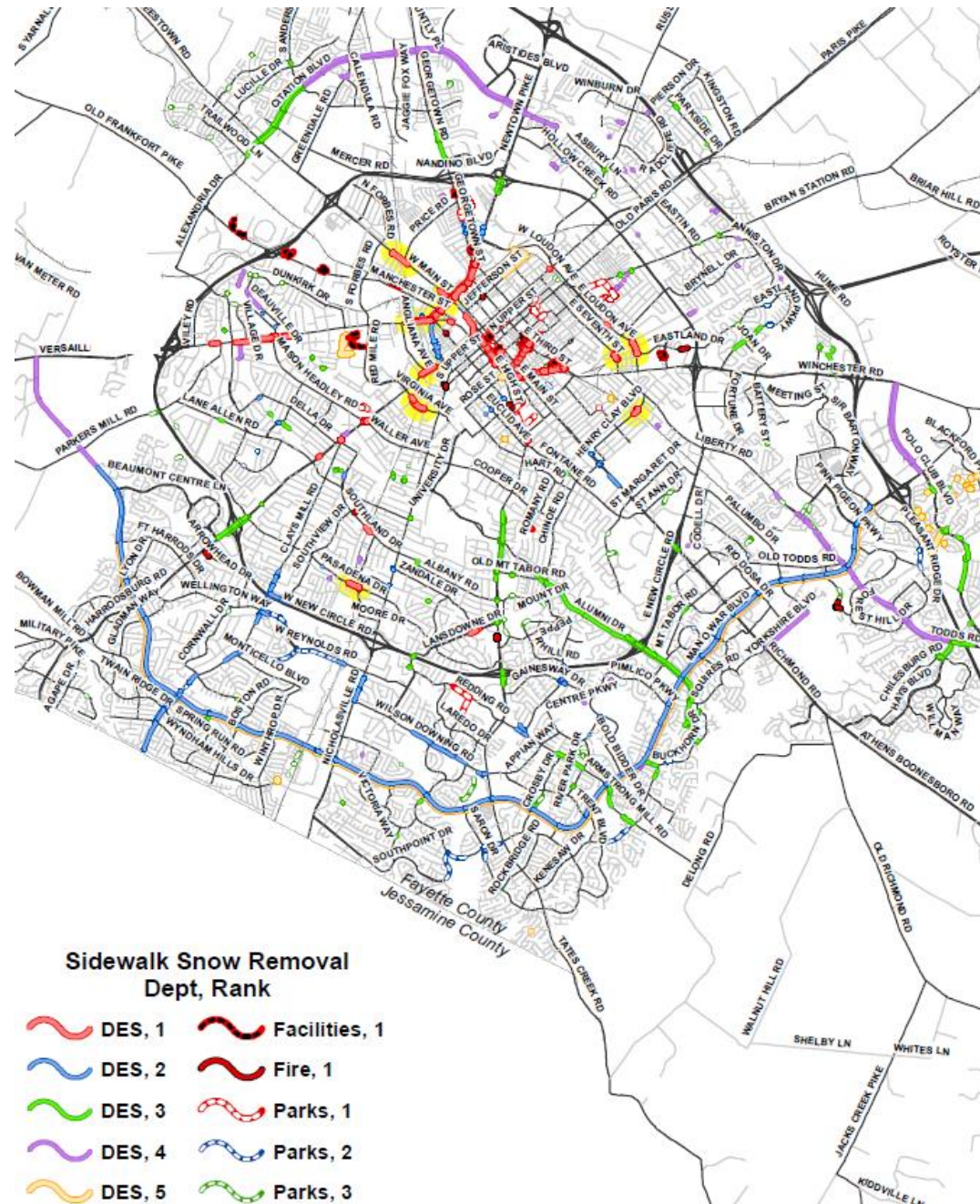
Town Branch Commons Sidewalk Snow Removal







# LEXINGTON





# Sidewalk Snow Removal

Rank Examples	Length - FY25	Length - FY26
<b>Rank 1</b> <ul style="list-style-type: none"> <li>• Overpasses and underpasses</li> <li>• High density city-maintained sidewalks and crosswalks</li> <li>• City-owned facilities</li> <li>• Open Parks &amp; Recreation service facilities</li> </ul>	14.6 Sidewalk Miles	14.6 Sidewalk Miles
<b>Rank 2</b> <ul style="list-style-type: none"> <li>• Designated city-maintained sidewalks on arterials and collectors in high density areas (<i>i.e.</i>, inner loop of Man O War, Wellington Way, Wilson Downing)</li> <li>• Closed Parks &amp; Recreation service facilities &amp; near bus stops</li> <li>• School routes (school closed)</li> </ul>	36.5 Sidewalk Miles	24.0 Sidewalk Miles
<b>Rank 3</b> <ul style="list-style-type: none"> <li>• Perimeter sidewalks of Parks - High density areas</li> </ul>	16.6 Sidewalk Miles	16.7 Sidewalk Miles
<b>Rank 4</b> <ul style="list-style-type: none"> <li>• City-owned parcels in lower density residential areas (WQ lots, greenways)</li> <li>• Perimeter sidewalks of Parks - Low density areas</li> </ul>	15.3 Sidewalk Miles	15.3 Sidewalk Miles
<b>Rank 5</b> <ul style="list-style-type: none"> <li>• Sidewalks at entrances to greenways</li> <li>• Trails within greenways or parks (not true sidewalks)</li> <li>• Outer loop of Man O War</li> </ul>	1.6 Sidewalk Miles	13.8 Sidewalk Miles





## Staffing

**Streets and Roads** – authorized strength: 68 CDL positions (9 vacancies); Supervisors (8) fill route vacancies, Managers (6) also available.

**Water Quality** – authorized strength: 29 CDL positions. (9 vacancies)  
Not all available to drive at the same time in case of sewer line breaks.

**Parks Maintenance**- 4 dump trucks and at least 14 CDL drivers to help where needed.

**Environmental Services** – 14 positions (5 authorized strength positions and 9 part-time general labor positions) for clearing LFUCG sidewalks.  
One CDL driver assisting Streets & Roads.

**Other** – 8 Contract drivers and plows from Red River. 5 landscaper trucks plus an additional 3 trucks after 48 hours.

Additional drivers from Waste Management, Code Enforcement, and former employees.





## Plan Finalization Schedule

**Stakeholder Meeting** – September 10, 2025  
LexTran, FCPS, State DOT, etc. were invited.

**EQ&PW Committee Update** – October 7, 2025

**Post to Webpage** – October 31, 2025







# Communications

- **Director of Streets & Roads** emails internal and external partners informing of expected conditions and plans. This could be as simple as monitoring current conditions and road temperatures.
- **Commissioner of EQPW** informs Council and Administration of plans of action.
- **PIO** with **EQPW PIE** support informs public and staff via socials.
- **LexCall** gathers service requests and directs them to Streets & Roads administration for resolution.
- Snow and Ice Control plan on the web at:

<https://www.lexingtonky.gov/snow-and-ice-control-plan>





## Shout out to our partners!

Cooperation from the following LFUCG partners is appreciated and essential for treating our roads and rights-of-way during winter weather:

### A **Big** Thank You To

- **LexCall**
- **Parks & Recreation**
- **Public Information Office**
- **Water Quality**
- **Waste Management**
- **LexPark**
- **Environmental Services**
- **Facilities Management**
- **Fleet Services**
- **GTV3**
- **GIS / IT**





*Old Barn*



*New Dome*







# QUESTIONS?

