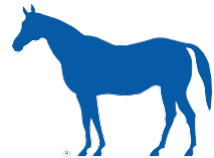


# URBAN GROWTH MASTER PLAN UPDATE

*General Government and Planning Committee*

*2/13/24*



**LEXINGTON**

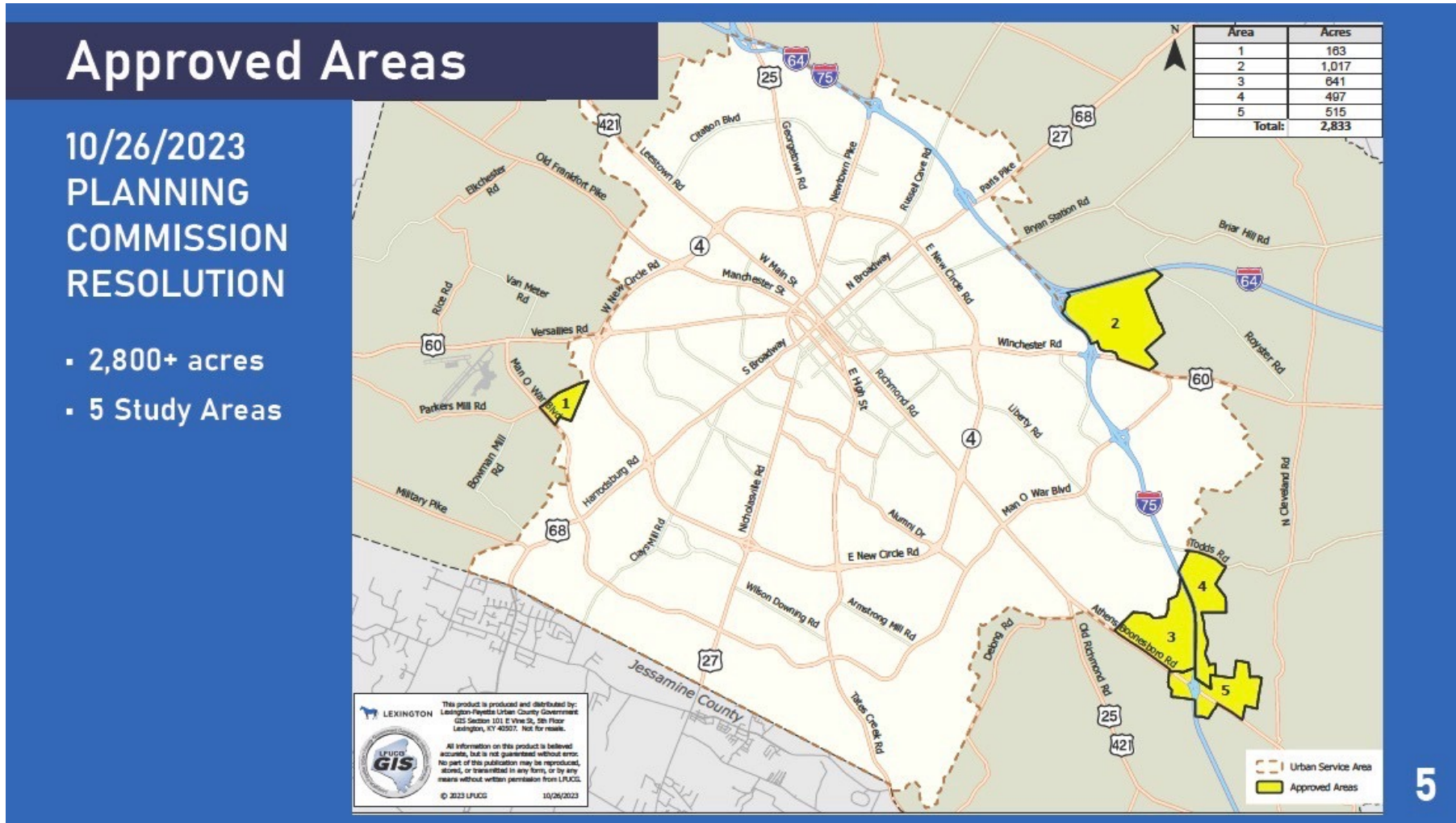
# Project Team

## Team Organization

|   |  |   |
|---|--|---|
|  <p>Master Planning,<br/>Community Engagement,<br/>and Project Management</p> <hr/>  <p><b>Thomas Walsh</b><br/>Principal-in-Charge</p>  <p><b>Caleb Racicot</b><br/>Principal</p>  <p><b>Allison Stewart-Harris</b><br/>Project Manager</p>  <p><b>Samantha Castro</b><br/>Community Planner</p> |  <p><b>Gresham<br/>Smith</b></p> <hr/> <p>Transportation &amp;<br/>Infrastructure</p> |  <p><b>PES</b><br/>Partners for<br/>Economic Solutions</p> <hr/> <p>Development Feasibility &amp;<br/>Financing Mechanisms</p> |
|   |  <p><b>Southface</b></p> <hr/> <p>Sustainability</p>                                 |  <p><b>CivicLex</b></p> <hr/> <p>Community<br/>Engagement</p>   |



# PC Recommended Areas

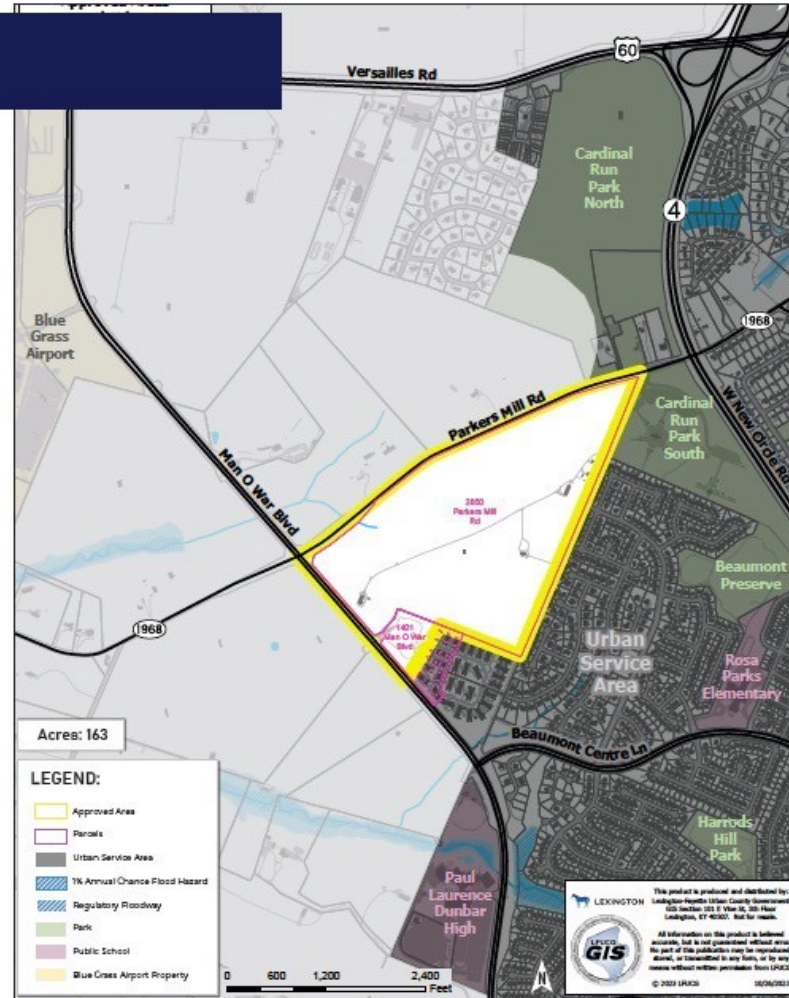


# PC Recommended Areas

## Area 1

Parkers Mill & Man O War

• 163 acres

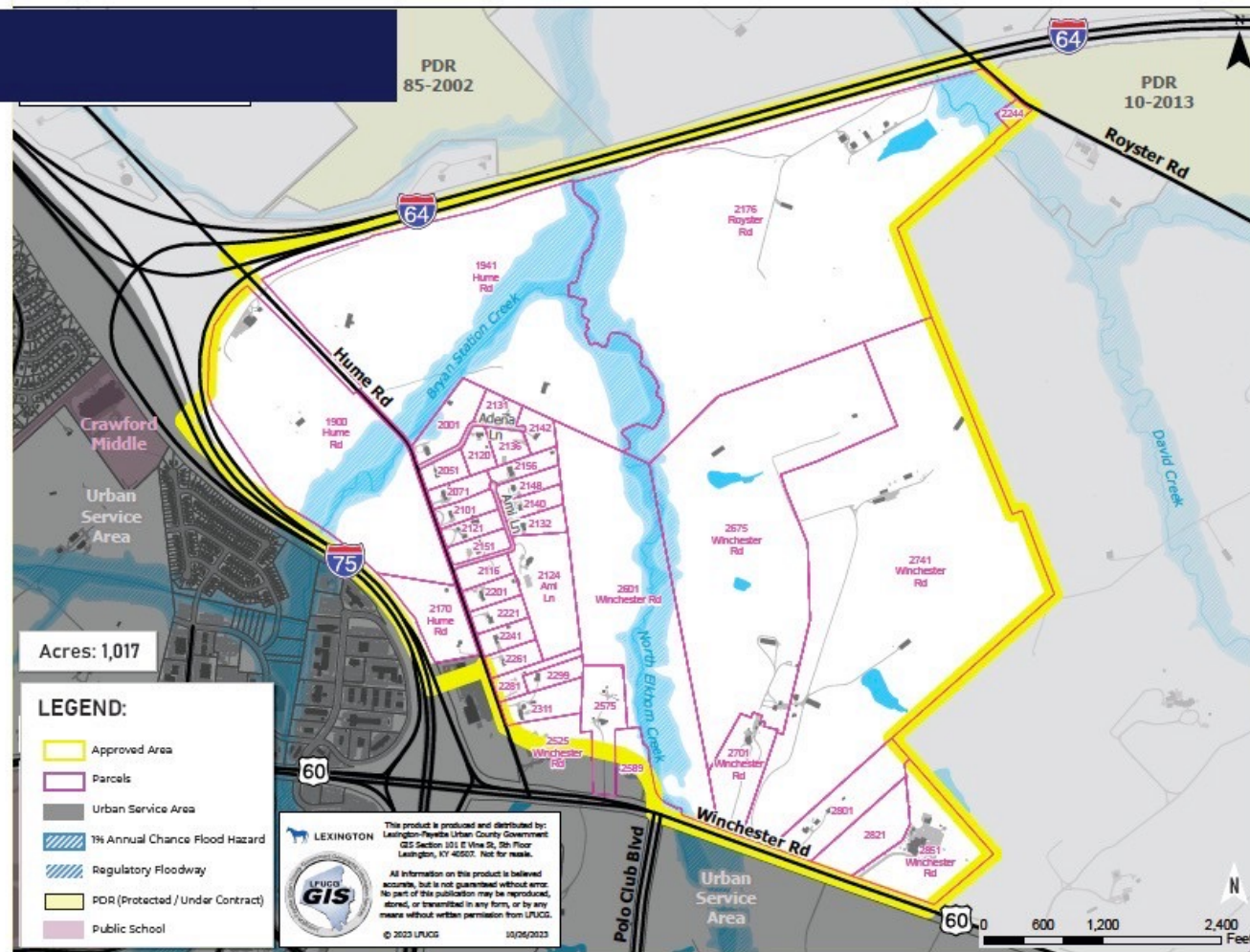




# PC Recommended Areas

## Area 2

**Winchester Road & Hume Road**  
• 1,017 acres

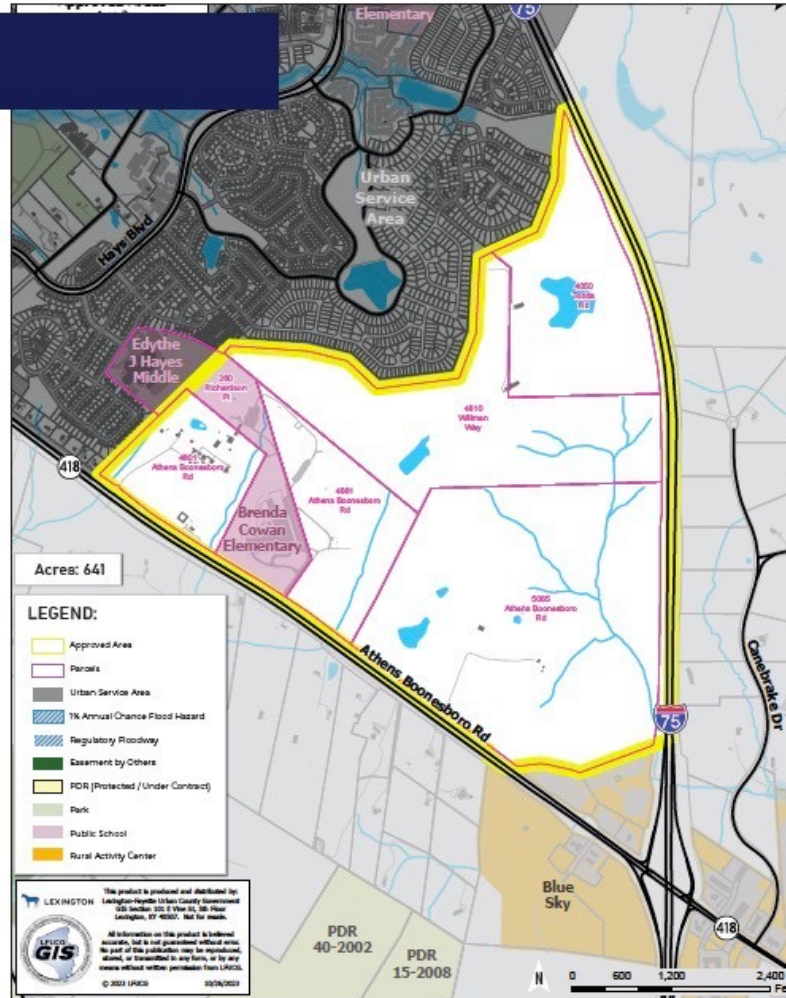


# PC Recommended Areas

## Area 3

**Athens-Boonesboro & Brenda Cowen**

• 641 acres

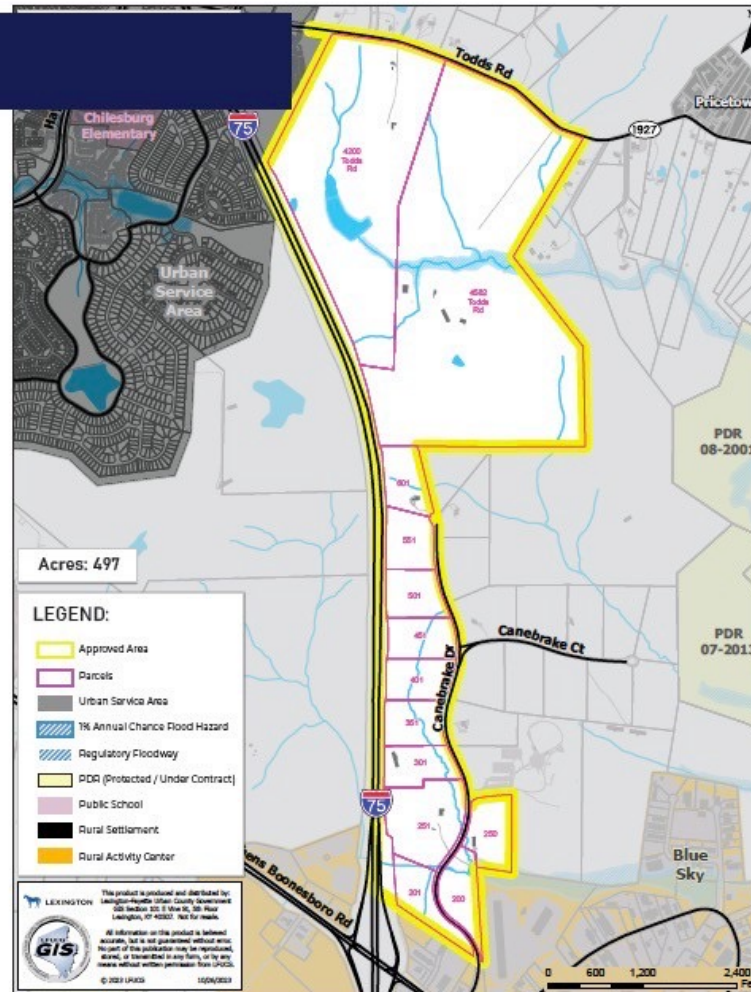


# PC Recommended Areas

## Area 4

Todds Road &  
Canebrake Drive

• 497 acres

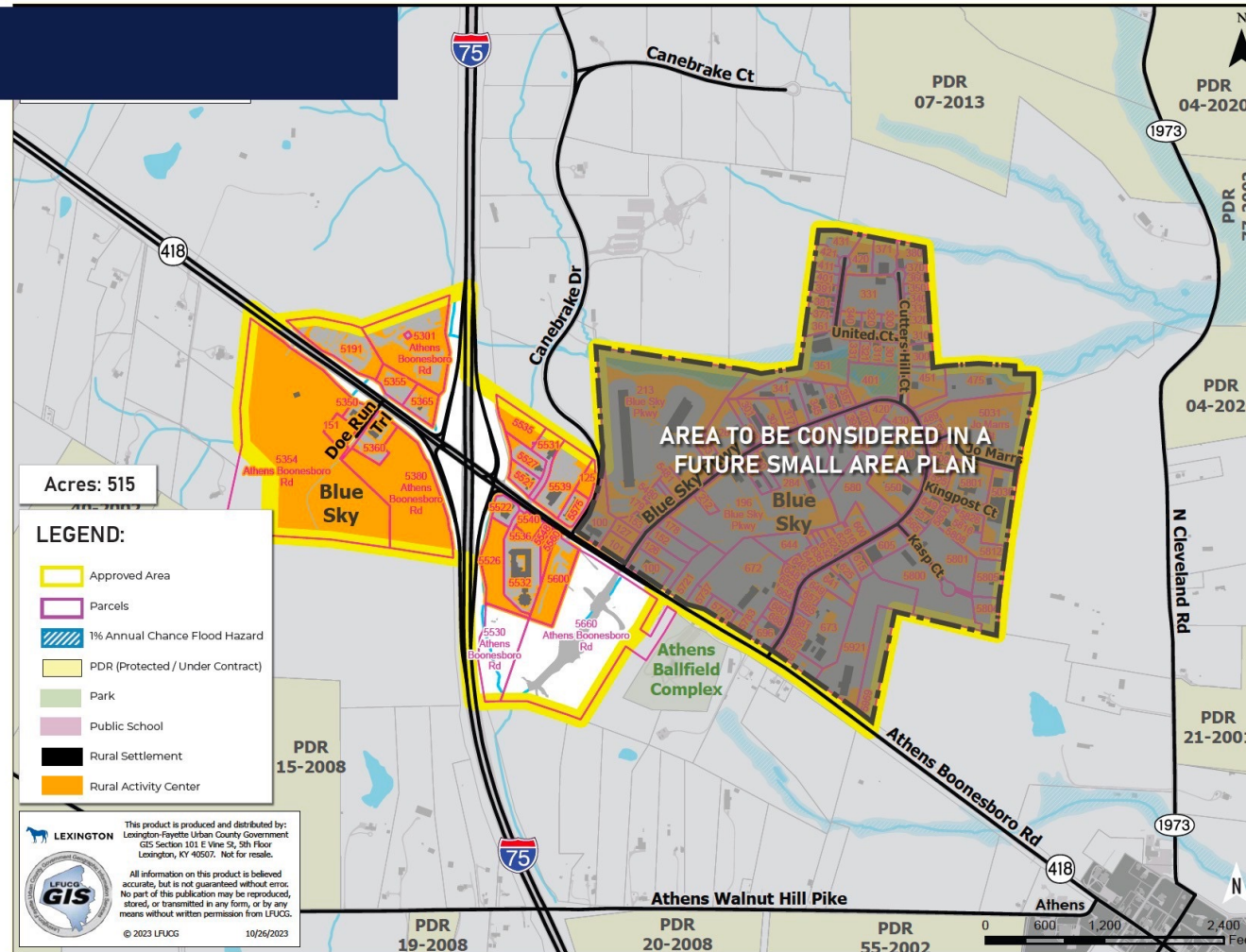




# PC Recommended Areas

## Area 5

- 515 acres
- Blue Sky studied in a future SAP
- Focus on 4 corners of interstate





## Plan Process



### Part One: Gather Information & Input

We'll develop **guiding principles** for the expansion areas based on community input, market data, and an understanding of existing conditions.



### Part Two: Build Concepts & Draft Plan

The guiding principles will help us develop **concepts** for how urban development, transportation, parks, and infrastructure should be built in the areas.



### Part Three: Review & Check

We'll gather public feedback on the concepts, make any needed **revisions**, and then create a **detailed plan** for how these concepts will be implemented.

# Community Engagement

## Interviews

---



## LEXINGTON

- Commissioner of Social Services
- Commissioner of General Services
- Commissioner of Environmental Quality & Public Works
- Commissioner of Public Safety
- Commissioner of Housing Advocacy & Community Development
- Commissioner of Finance
- Deputy Chief of Finance
- Director of Aging and Disability Services
- Administrative Officer for Economic Development
- Director of Parks & Recreation
- Superintendent of Planning & Design for Parks & Recreation
- Chief Development Officer (Upcoming)
- Director of Water Quality (Upcoming)
- Director of Engineering (Upcoming)
- Director of PDR Program (Upcoming)

# Community Engagement



## SITE TOURS

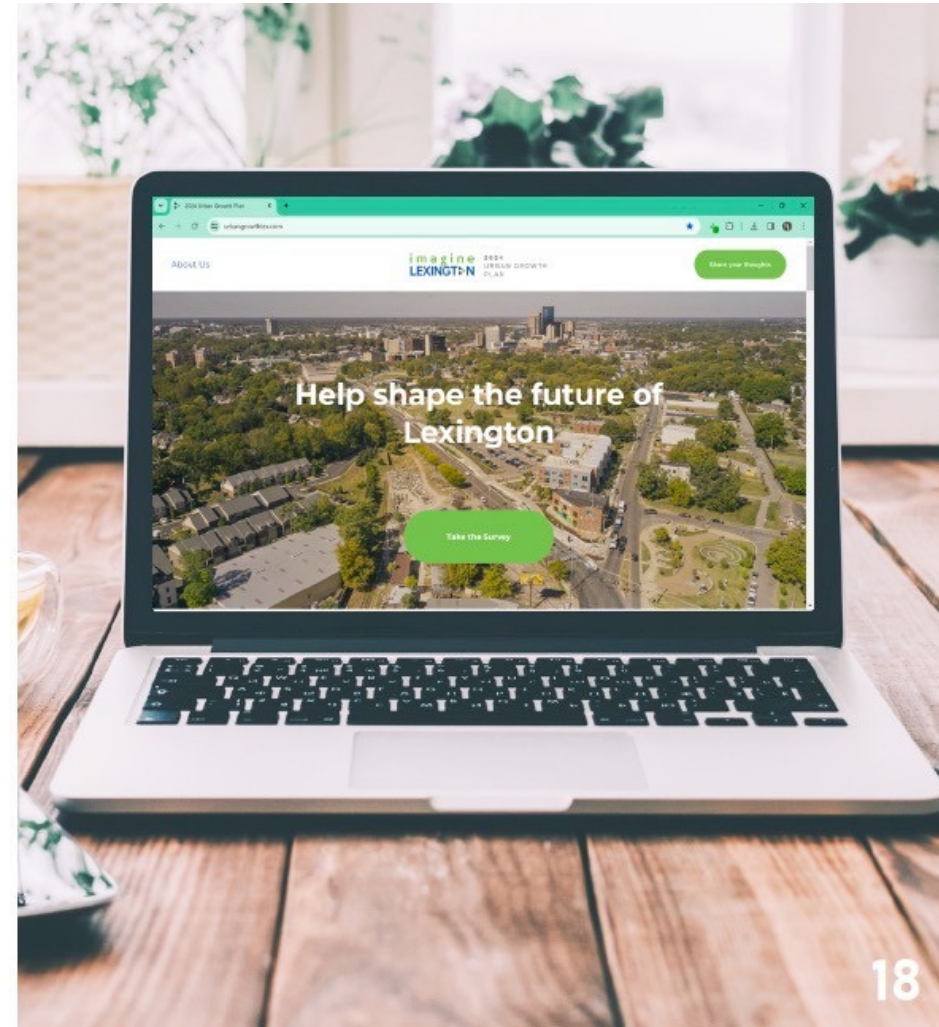




# Community Engagement

## Getting the Word Out

- Project Website  
<https://www.urbangrowthlex.com/>
- Imagine Lexington Distribution Materials
- CivicLex Newsletter
- Mailings to Property Owners, Adjacent Neighbors, and Adjacent Neighborhood Associations
- Targeted social media ads (Instagram and Facebook)
- Councilmember updates

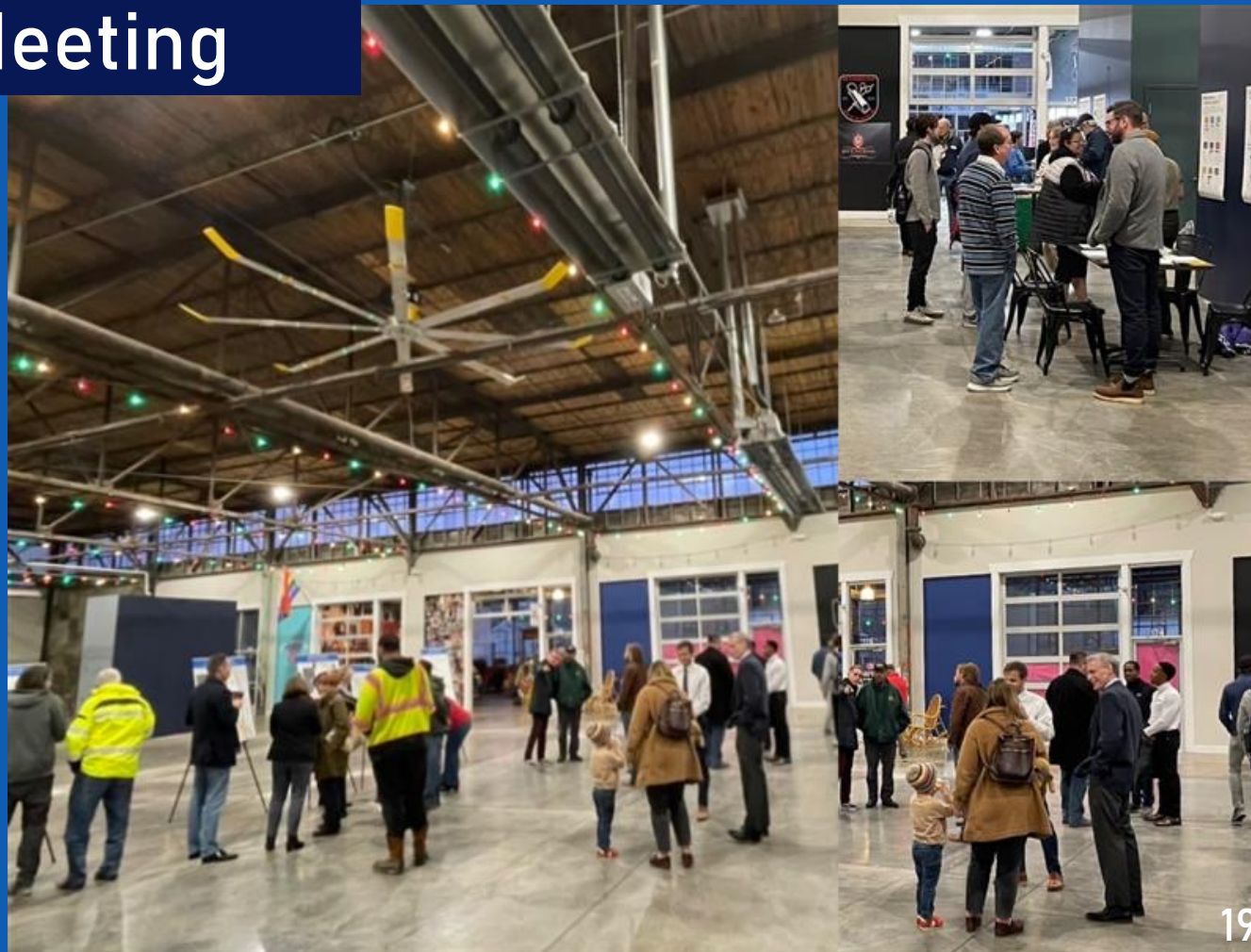


# Community Engagement

## Kickoff Meeting

12/06/24  
Greyline  
Station

- learn about the project
- comment on the areas selected
- weigh in on values and priorities





# Community Engagement

## Survey

---

**694 responses** so far

The top values by theme are:

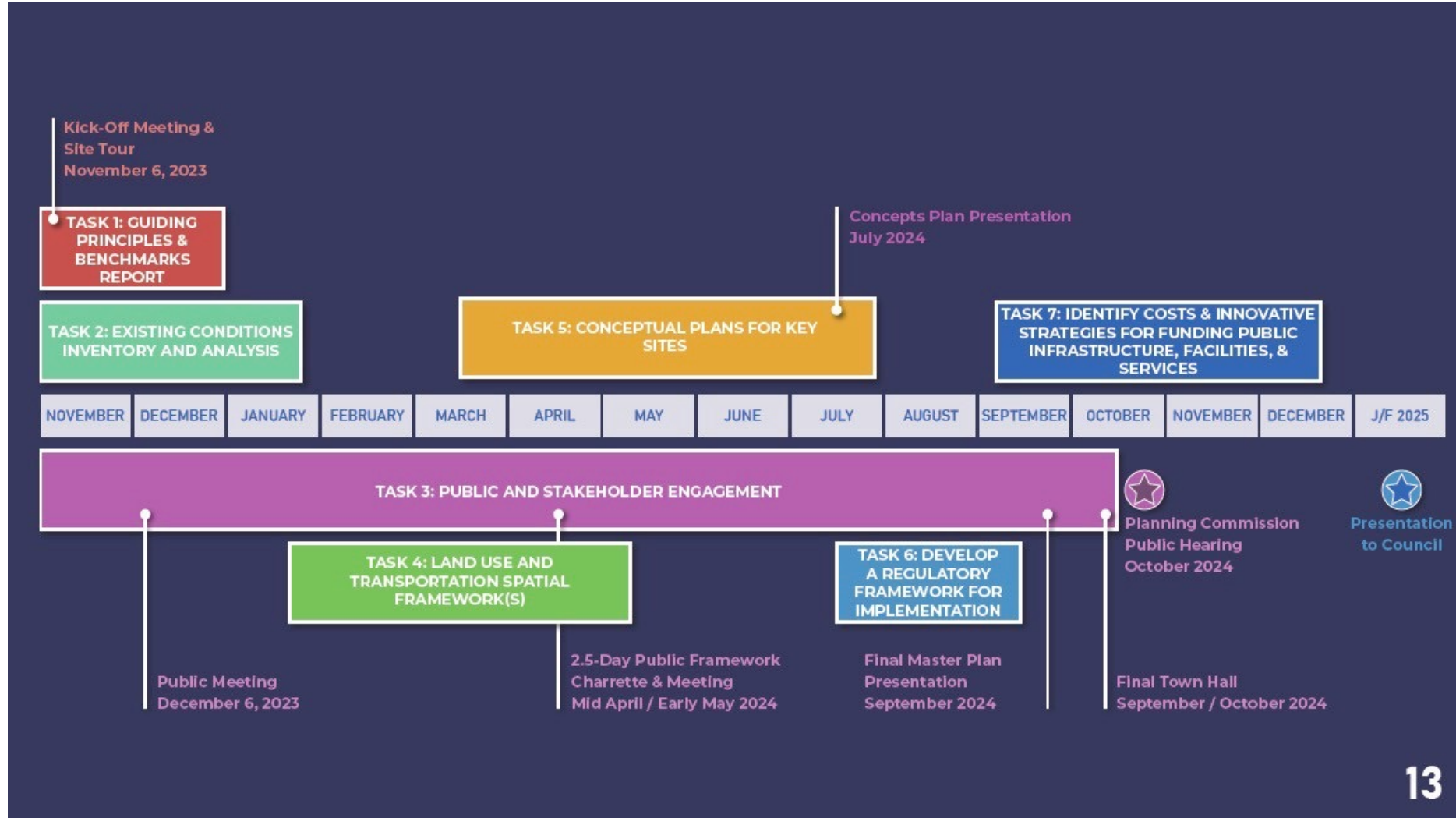
- **Neighborhoods:** safety, walkability, amenities
- **Environment:** trees, rural greenspace conservation, urban greenspaces
- **Jobs and prosperity:** housing affordability, public education, wages and benefits
- **Transportation:** traffic congestion, walkability, public transportation
- **Equity:** housing affordability, housing access, equitable development

**80%** of respondents opted to stay in the loop and gave contact information

**35%** of respondents (230 people) are interested in doing a focus group



# Project Timeline



# Questions?



**LEXINGTON**