



bell
engineering

Proudly
Serving
Kentucky
For 102 Years

November 10, 2016
ELECTRONIC

Statement of Qualifications
**Contract 1 Roadway, Corridor &
Intersection Design Planning**

Lexington-Fayette Urban County Government
Lexington, Kentucky

Firm Submitting Proposal: Bell Engineering

Complete Address: 2480 Fortune Drive, Suite 350, Lexington, KY 40509
Street City Zip

Contact Name: Megan Hogan Title: Director of Marketing

Telephone Number: 859/278-5412 Fax Number: 859/278-2911

Email address: mhogan@hkbell.com



November 10, 2016

Mr. Todd Slatin, Purchasing Director
Lexington-Fayette Urban County Government
Room 338, Government Center
200 East Main Street
Lexington, KY 40507

Re: RFQ #38-2016 Professional Engineering Services Contract 1 – Roadway, Corridor & Intersection Design Planning

Dear Mr. Slatin,

Bell Engineering is pleased to submit our qualifications for renewal of our Contract 1 prequalification to provide engineering services for Roadway, Corridor and Intersection Design Planning to the Lexington-Fayette Urban County Government (LFUCG). As the **longest continually operating civil consulting engineering firm** in Kentucky, Bell is a name that has been associated with **reliability and innovation for 102 years**. We are confident that upon your review of our qualifications, you will conclude that the **Bell team is extremely qualified to continue providing these services**. We offer the following to LFUCG:

- ***KYTC prequalified in rural and urban roadway design and current Contract 1 holder with LFUCG***
What this means for LFUCG: Bell is familiar with both KYTC and LFUCG practices and procedures regarding roadway/transportation projects. We understand the contract award process and expectations on projects.
- ***Miles of bicycle, pedestrian and roadway planning/design experience and extensive streetscape experience***
What this means for LFUCG: Bell provides knowledge specific to the Commonwealth of Kentucky and, more importantly, the Central Kentucky Area. With previous work experience in the area, we are familiar with the subsurface conditions, project opportunities, and constraints.
- ***Proven capacity to perform under accelerated design & construction schedules***
What this means for LFUCG: Through working with our clients and contacts at various regulatory and funding agencies, our team consistently meets and exceeds defined project schedules with effective management of the design team and contractors while still maintaining project budget.
- ***100% locally owned and operated***
What this means for LFUCG: The Bell team, Abbie Jones Consulting and LE Gregg Associates are all locally owned and operated firms with corporate headquarters located in Lexington, Kentucky. Additionally, Abbie Jones Consulting is an LFUCG certified WBE.

On behalf of Bell Engineering, we thank you for the opportunity to showcase our experience and **outline the strengths that our team can provide**. We look forward to providing quality engineering and planning services to LFUCG through this and many future projects.

Sincerely,
BELL ENGINEERING

A handwritten signature in blue ink that reads "Kelly G. Gillespie".

Kelly G. Gillespie
President

2480 fortune drive, suite 350, lexington, kentucky 40509
859/278-5412 phone 859/278-2911 fax www.hkbell.com

bell engineering. creating. improving. planning for the future.



TABLE OF CONTENTS

FIRM SUBMITTING

LETTER OF TRANSMITTAL

1.0 FIRM QUALIFICATIONS

2.0 PROJECT TEAM

3.0 LIST OF CLIENTS

4.0 LIST OF PROJECTS

5.0 LOCAL OFFICE

6.0 DBE INVOLVEMENT

APPENDIX A



1.0 FIRM QUALIFICATIONS

- Founded in Lexington, KY in 1914
- Locally owned and operated
- 100% of work performed by staff located in Kentucky
- Longest continually operating civil consulting engineering firm in Kentucky

Bell Engineering has remained a locally owned and operated civil engineering firm since Mr. Howard K. Bell formed the company in Lexington, Kentucky in 1914. Originally located on Limestone Street, **Howard K. Bell Consulting Engineers, Inc. provided water, wastewater and stormwater engineering services** to a variety of clients throughout Kentucky and West Virginia.

Prior to Mr. Bell's death in 1939, his son Mr. Grant S. Bell and Mr. James K. Latham were made partners in the firm. In 1960, **operations were changed from a partnership to a corporation** and the firm adopted an Employee Stock Ownership Plan (ESOP) in 1992. In 2005, the **firm rebranded under the name Bell Engineering** and the Lexington headquarters moved to its current location on Fortune Drive in August 2010.

Since Mr. Bell's time, the **firm has grown to include a multitude of services** including landscape architecture, certified planning and industrial pretreatment providing clients the opportunity to work with one firm for all of their engineering needs. Our firm is well-staffed to complete a variety of projects in **a timely, efficient and cost-effective manner** in many different markets including municipal, industrial, commercial, federal, energy and natural gas, transportation and education.

Bell Engineering is a name that has been associated with **reliability and innovation for 102 years**. As the longest continually operating civil engineering firm in the state, we have completed projects across Kentucky and in many surrounding states. We are currently providing services in numerous states throughout the country and are capable of working anywhere within the US. **We are licensed to practice in Kentucky, Indiana, Ohio, Tennessee, West Virginia, Arkansas and Arizona** and are a **registered small business with the SBA**.

"Everyone is very professional and friendly. Every project we have worked on together has turned out to be very successful. I would never hesitate to call upon Bell Engineering for any needs we may have as a city."
– Hon. Gary Hunt; Mayor, City of Owingsville, Kentucky

As a Kentucky owned firm, our team has the ability to provide clients with a **responsive and detailed approach** and **knowledge specific to the Commonwealth of Kentucky**. This also gives us the ability to operate with **lower overhead costs** and **maximize project budgets**. Our clients can feel confident that our team will be available to offer guidance and receive input throughout project planning, design and construction. Additionally, our team is **available 24/7** via smart phone service.

A key member of Bell's team is **Abbie Jones Consulting**. Abbie Jones Consulting, a **LFUCG certified DBE**, was founded in Lexington, KY in 2011 with a vision to provide professional engineering and land surveying focused on building sustainable communities for future generations.

STATEMENT OF QUALIFICATIONS
Lexington-Fayette Urban County Government
RFQ#38-2016 Professional Engineering Services
Contract 1 Roadway Corridor and Intersection Design Planning



Staff will **provide professional land surveying services** as needed including construction staking, topographic and boundary surveys and elevation certification.

LE Gregg Associates was founded in Lexington, KY in 1957 to **provide engineering and materials testing services**. With 57 years of institutional experience, the firm is well-versed in the process of **conducting geotechnical investigations for a variety of projects**. LE Gregg offers a range of services including Phase I Environmental Site Assessments and Special Inspections.

Bell Engineering is "responsive, professional and [a] team player." - Mr. Michael A. Scott; American Electric Power

The Bell Engineering team is requesting **renewal of our prequalification** on the following Lexington-Fayette Urban County Government (LFUCG) Department of Engineering (DOE) contracts: **Contract 1: Roadway, Corridor & Intersection Design/Planning**. Under this contract, our team successfully completed the intersection safety audit at Man O'

War at Victoria Way/Habersham Drive in 2015. We are also currently completing the Alumni Drive Separated Bike Lanes project for the DOE under Contract 5. We are qualified to provide engineering services to the DOE for Contract 1 because of our **knowledge and team experience with similar projects as well as our project history with LFUCG**. The combined resources of our companies will ensure that any projects our team is selected for will exceed the DOE's expectations.

Bell Engineering provides the expertise to **plan, design and construct roadway and transportation networks** as either stand-alone projects or as an integrated part of a larger concept. From the **design of the first concrete streets in Lexington in the 1920's** to the use of pervious pavement in today's design, Bell continues to implement state-of-the-art street and roadway construction techniques. We are currently involved in **urban, commercial, industrial and residential roadway projects**. Bell is **KYTC prequalified in rural and urban roadway design**.



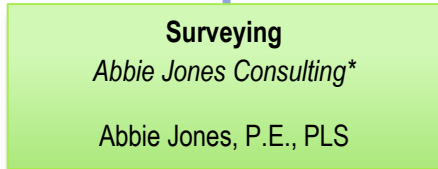
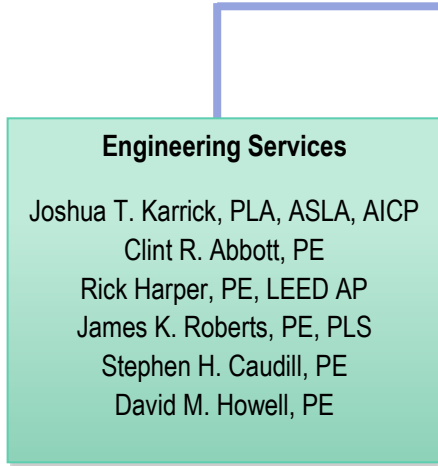
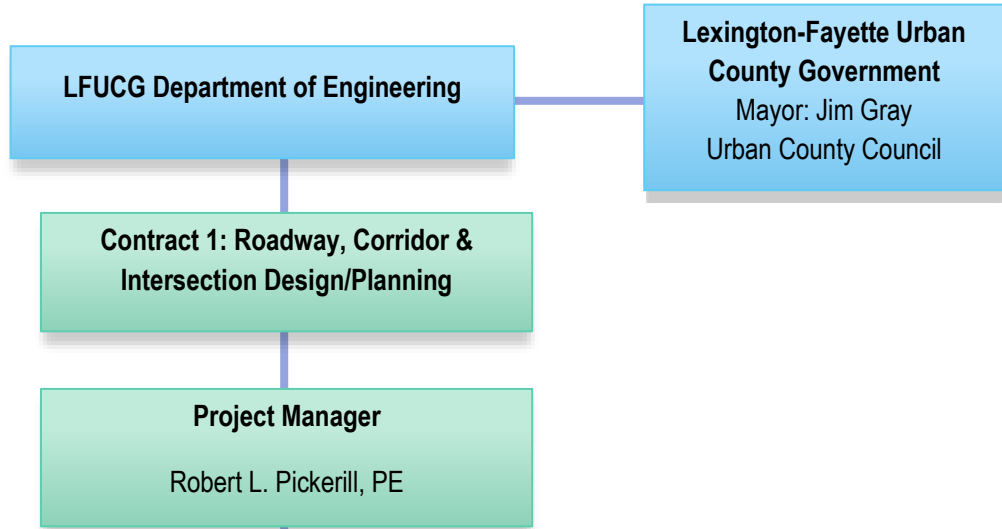
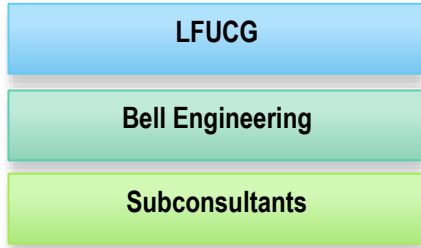
Alumni Drive Roadway Realignment

Our team recently finished work as a subconsultant on the Alumni Drive Roadway Realignment project on the University of Kentucky campus and is **currently providing engineering services for a number of Consent Decree related projects** for the LFUCG Division of Water Quality. Our staff have **developed established relationships with LFUCG project managers** and understand the **DOE processes and procedures** for projects executed under these contracts.

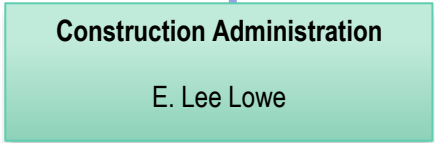
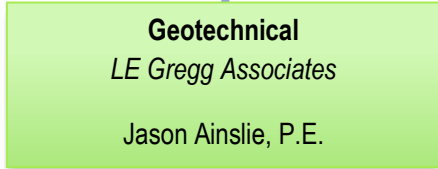
STATEMENT OF QUALIFICATIONS
Lexington-Fayette Urban County Government
RFQ#38-2016 Professional Engineering Services
Contract 1 Roadway Corridor and Intersection Design Planning



2.0 PROJECT TEAM



*Certified



STATEMENT OF QUALIFICATIONS
Lexington-Fayette Urban County Government
RFQ#38-2016 Professional Engineering Services
Contract 1 Roadway Corridor and Intersection Design Planning



Robert L. Pickerill, PE
Project Manager
Lexington/Hopkinsville, KY

Mr. Pickerill has 38 years of industry experience including a **strong background in project management and quality control in construction activities** overseeing all phases of projects including estimating, bidding, negotiating subcontracts, procuring equipment and materials, reviewing shop drawings, preparing pay estimates and negotiating design modifications. Additionally, he has **design and survey experience with site development projects, commercial and residential site plans, roadway projects**, street/parking layout, streetscape, water features, sewer, water, and **stormwater drainage design**.

Education

B.S. Civil Engineering, Western Kentucky University

Registrations

Professional Engineer, KY – 15052

Relevant Experience

- Project manager for intersection safety audit at Man O' War at Victoria Way/Habersham Drive – Lexington-Fayette Urban County Government; Lexington, KY
- Project manager for Alumni Drive Roadway Realignment project including drainage calculations, landscape architecture services and inspection during construction of the realigned roadway and two roundabouts – University of Kentucky; Lexington, KY
- Project manager for UK/Nicholasville Road Flood Mitigation Project utilizing FEMA Hazard Mitigation Grant Funds: Modification of 7 detention basins within 240-acre watershed; variety of utility relocations, permanent removal of road and upgrades to culvert on Nicholasville Road; underground stormwater detention and water quality units – University of Kentucky; Lexington, KY
- Project manager for reconstruction of 6th Street including relocation of overhead utilities underground, new decorative intersection at 6th and Main Streets, sidewalk replacement, new lighting, reversal of traffic flow and drainage improvements – Hopkinsville, KY
- Project manager for MSU Drive Extension including the design of 1045 L.F. of new 2-lane road with turn lane, curb and gutter – Hopkinsville, KY
- Project manager for Country Club Lane Extension including reconstruction of approximately 550 L.F. of existing roadway, curb and gutter, storm drainage and utility relocation – Hopkinsville, KY
- Project manager for Quintin Court Widening including the widening of approximately 950 L.F. of 2-lane road in Industrial Park into a 3-lane road – Hopkinsville, KY
- Project manager for Sheffield Downs Subdivision Phase I, II and III Project including development plans and site work for the addition of a residential subdivision; completed a master plan and master drainage plan for the 107-acre development; designed all aspects of the subdivision including water and sewer, roadways, sidewalks, street lighting and stormwater management/storm sewers. – Hopkinsville, KY
- Project manager for Westbrooke Subdivision including 3,700 L.F. of roadway – Pembroke, KY
- Project engineer for civil design of Vehicle Maintenance Facilities design/build project including design of grading, pavement, site utilities and stormwater facilities – Fort Cambell, KY

STATEMENT OF QUALIFICATIONS
Lexington-Fayette Urban County Government
RFQ#38-2016 Professional Engineering Services
Contract 1 Roadway Corridor and Intersection Design Planning



Joshua T. Karrick, PLA, ASLA, AICP
Landscape Architect
Lexington, KY

Mr. Karrick brings **17 years of experience** in Landscape Architecture and Planning to Bell Engineering. He has a strong background in project development and specializes in stormwater management, **master planning**, urban design, parks and recreation, **streetscapes**, bikeways and trails, green design and community planning. Mr. Karrick is involved with several professional societies including the American Society of Landscape Architects, the American Institute of Certified Planners and the Kentucky Association of Mapping Professionals.

Education

B.S. Landscape Architecture, University of Kentucky

Registrations

Professional Landscape Architect, KY – 679
American Institute of Cert. Planners – 023764

Relevant Experience

- Project manager for Alumni Drive Separate Bike Lanes project – Lexington-Fayette Urban County Government; Lexington, KY
- Project planner, designer and landscape architect for Alumni Drive Roadway Realignment project including drainage calculations, landscape architecture services and inspection during construction of the realigned roadway and two roundabouts – University of Kentucky; Lexington, KY
- Project planner, designer and landscape architect for UK/Nicholasville Road Flood Mitigation Project utilizing FEMA Hazard Mitigation Grant Funds: Modification of 7 detention basins within 240-acre watershed; variety of utility relocations, permanent removal of road and upgrades to culvert on Nicholasville Road; underground stormwater detention and water quality units – University of Kentucky; Lexington, KY
- Project director for Lexington Distillery District Master Plan incorporating design elements including streetscape, road realignment, trail, water quality, bus stops, lighting and amenities – Lexington, KY
- Project designer for South Limestone Multimodal Transportation Study which included design assistance with streetscape, bike and pedestrian improvements for the South Limestone corridor from Euclid Avenue south to Cooper Drive – Lexington-Fayette County Urban Government; Lexington, KY
- Project manager and lead designer for development of the Nicholasville Downtown Master Plan including inventory and analysis of the downtown core and surrounding neighborhoods and an open design forum to develop community buy-in and support which led to a new streetscape for the downtown core and three urban parks – City of Nicholasville, KY
- Project manager and lead designer for the creation of the Harrodsburg Road Master Plan for a 6.7 mile section of Harrodsburg Road from Main Street to Military Pike focusing on developing standards and recommendations for landscaping, rain gardens, vegetative swales, sidewalks, bike lanes, bus stops, signage and places for public art – LFUCG; Lexington, KY
- Project manager for Manchester Street Corridor Schematic Plan – Urban Collage; Lexington, KY
- Project designer for Tates Creek Corridor Enhancement Master Plan – LFUCG; Lexington, KY
- Landscape Architect for Cigar Lane Project including Phase I and II roadway design for the 1 mile Cigar Lane to serve the 2010 FEI World Equestrian Games through improved pedestrian safety, improved traffic flow through widening and installation of a one-lane roundabout (\$2,300,000) – Kentucky Horse Park; Lexington, KY

STATEMENT OF QUALIFICATIONS
Lexington-Fayette Urban County Government
RFQ#38-2016 Professional Engineering Services
Contract 1 Roadway Corridor and Intersection Design Planning



Clint R. Abbott, PE
Project Engineer
Lexington, KY

Mr. Abbott is a registered Civil Water Resources Engineer with **17 years' experience designing potable water, fire protection, sanitary sewer and stormwater systems**. He is also experienced with **grading and drainage design, detention and retention systems, stormwater quality design** and construction administration related to all of the above. Half of his career has been spent analyzing and designing large scale sanitary and potable water systems with the other half spent as a site engineer. He has also spent time as a consultant to a Central Kentucky Planning and Zoning Commission.

Education

B.S. Civil Engineering, University of Louisville
Speed Scientific School

Registrations

Professional Engineer, KY – 24737

Relevant Experience

- Project engineer for Alumni Drive Separate Bike Lanes project – Lexington-Fayette Urban County Government; Lexington, KY
- Project engineer for the UK Landscape Improvements Project which focuses on updating civic open spaces, streetscapes, pedestrian corridors, quadrangles and courtyards to provide a unified landscape on campus, the project will enhance pedestrian orientation by visually connecting various areas of campus and retaining views of new and iconic buildings – University of Kentucky; Lexington, KY
- Project engineer for Monticello Safe Routes to School Sidewalk Project including construction and rehabilitation of sidewalks along College Street from Main Street to the elementary school and along Myrtle Street near the middle and high schools – Monticello, KY
- Engineer of record for Shillito Park Trail Project including grading, drainage, horizontal and vertical alignment and other design constraints to develop plans and specifications for 2.3 miles of 2 shared-use trails that circumnavigate Shillito Park (the Lafayette Trail and the Shillito Trail); the Lafayette Trail connects to the trail system at Wellington Park off Reynolds Road and is paved and designed for activities such as running and walking as well as higher speed activities like bicycling and skating, the trail route reflects central Kentucky topography, with rolling hills throughout its course – LFUCG; Lexington, KY
- Engineer of record for a \$30 million sports complex, comprised of Football, Softball, Baseball and Soccer fields in Elizabethtown. Included the planning and design of all vehicular and pedestrian access (1.5 miles of sidewalk and .65 miles of roadway) serving the entire complex and approximately 15 buildings. This work was completed with no change orders – Elizabethtown Sports Park; Elizabethtown, KY
- Project engineer for three separate expansion projects that added three buildings and doubled the campus' usable area including planning and design of all vehicular and pedestrian access (1 mile of internal campus roads and .5 mile of sidewalks) serving the expanded area – Gateway Community and Technical College Campus Expansion; Florence, KY

STATEMENT OF QUALIFICATIONS
Lexington-Fayette Urban County Government
RFQ#38-2016 Professional Engineering Services
Contract 1 Roadway Corridor and Intersection Design Planning



Rick Harper, PE, LEED AP
Project Engineer
Hopkinsville, KY

Mr. Harper has **30 years of industry experience** including a strong background in commercial, municipal, industrial and institutional **site development projects**. Mr. Harper is responsible for engineering design and project management activities including **grading and drainage, stormwater management, erosion and sediment control**, site layout, **parking and traffic control, pedestrian access and construction details**. In addition to site development design, Mr. Harper's experience also includes sanitary sewer main extension and pump station design, water main extensions, flood encroachment studies for permitting and channel design and road and street design.

Education

B.S. Civil Engineering, University of Kentucky

Registrations

Professional Engineer, KY – 17315

Professional Engineer, TN – 22902

Professional Engineer, OH – 56200

Professional Engineer, IN – 9300207

Relevant Experience

- Project engineer for Alumni Drive Roadway Realignment project including drainage calculations, landscape architecture services and inspection during construction of the realigned roadway and two roundabouts – University of Kentucky; Lexington, KY
- Project engineer for UK/Nicholasville Road Flood Mitigation Project utilizing FEMA Hazard Mitigation Grant Funds: serves to remedy stormwater quantity and quality control issues, includes pervious pavement and utility relocations – University of Kentucky; Lexington, KY
- Project engineer and manager for Howell Street Drainage Improvement project that included the installation of +/- 1,000 linear feet of 24" storm culvert, drainage inlet structures, stone segmental retaining walls and new sidewalk – Hopkinsville, KY
- Project engineer for Boone County Public Safety Complex including site development for the 60-acre tract with a site for the new jail, a site for the new sheriff department facility and 0.5 miles of new road with parallel sidewalks and bike trails – Boone County Fiscal Court; Burlington, Kentucky
- Project engineer for Christian County Justice Center including site re-development of a 3.5 acre parcel bordered on three sides by city streets and on the fourth by the North Fork of the Little River. Project included parking for 250 vehicles, sidewalks and pedestrian plaza and replacement of all street side sidewalks along the perimeter of the site – Christian County Fiscal Court, Hopkinsville, Kentucky
- Project engineer for Access Road for Universal Fasteners including site development for new industrial site and 0.65 miles of new access road – Gray Company; Centerville, TN
- Project engineer for Turn Lanes for Crofton Elementary School including site development for new school facility and 1120 feet of turn lane – Christian County Public Schools; Crofton, KY
- Project engineer for Turn Lanes for MLK Jr Elementary School including 30 acre site development for new school facility and two 600 feet left turn lanes – Christian County Public Schools; Hopkinsville, KY
- Project engineer for Turn Lanes for South Livingston Elementary School including site development for new school facility and 1400 feet of turn lane - Livingston County Public Schools; Smithland, KY
- Project engineer for Turn Lanes for Trigg County Elementary School including site development for school addition and 500 feet of turn lane - Trigg County Public Schools; Cadiz, KY

STATEMENT OF QUALIFICATIONS
Lexington-Fayette Urban County Government
RFQ#38-2016 Professional Engineering Services
Contract 1 Roadway Corridor and Intersection Design Planning



James K. Roberts, PE, PLS
Project Engineer
Lexington, KY

Mr. Roberts is a **Principal in the firm** and serves as Executive Vice President and Director of Engineering Operations at Bell Engineering. He specializes in the **analysis of sewer collection and pumping systems (SSES)** and brings over **38 years of experience** in the industry. Mr. Roberts has advanced training in the use of EPA SWMM v5.0 sewer modeling and analysis software and is currently using it on several collection and treatment system studies. He has completed design work on both water and wastewater treatment projects and has experience in site development and utility relocation projects. He serves as our **in-house quality assurance coordinator** on most projects. Client satisfaction and meeting budgets and schedules are his main focus throughout a project.

Education

B.S. Civil Engineering, University of Kentucky
Value Engineering Workshop Training
CAD Production Technology & Workshop

Registrations

Professional Engineer, KY – 24737
Professional Engineer, WV – 13391
Land Surveyor, KY – 3010
Land Surveyor, WV – 1619

Relevant Experience

- Project engineer for intersection safety audit at Man O' War at Victoria Way/Habersham Drive – Lexington-Fayette Urban County Government; Lexington, KY
- Project manager and surveyor for Russell Safe Routes to School Project including 9,858 L.F. of sidewalk, surveying, curb and gutter layout and easement preparation for seven parcels along Kenwood Drive and KY 750 – Russell, KY
- Quality assurance for North Drive Safe Routes to School project which included .6 miles of new sidewalks and evaluation and design of corrections to drainage issues along adjacent ditch line (\$170,961) – Hopkinsville, KY
- Project manager for Riggs Street Renewal Project including street, curb and sidewalk replacement – Falmouth, KY
- Project engineer and surveyor for Barker Boat Launch & Access Road project which was the development of site facilities for a four-lane boat launch and 270-car/trailer parking area including horizontal and vertical control, topographical, access roadway design, site grading, storm drainage design and utility design – Yatesville Lake
- Project engineer and surveyor for Pleasant Ridge Recreation Complex project which was the development of access and camp site road layout and design including horizontal and vertical alignment, computer generated cross-sections, re-grade and volume calculations – Yatesville Lake
- Project manager for GIS Mapping of entire sewer collection system including topo survey of two existing pump stations and horizontal & vertical control – Clay City, KY
- Easement preparation for 50 parcels Carol Malone Highway Relocation

STATEMENT OF QUALIFICATIONS
Lexington-Fayette Urban County Government
RFQ#38-2016 Professional Engineering Services
Contract 1 Roadway Corridor and Intersection Design Planning





3.0 LIST OF CLIENTS

Bell Engineering is **KYTC prequalified in rural and urban roadway design** and we are **currently involved in urban, commercial, industrial and residential roadway projects**. We have provided engineering services on many projects similar to those that will be awarded through **Contract 1: Roadway, Corridor & Intersection Design/Planning**; making our team qualified to provide these services to LFUCG. The following table includes a list of clients and projects with contact information.




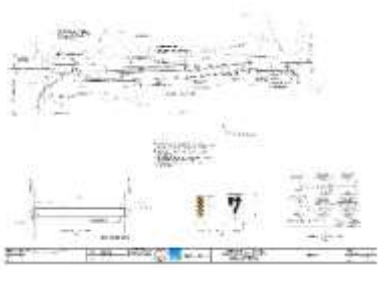
Client/Project Name	Contact Information
<p>LFUCG</p> <ul style="list-style-type: none"> - Alumni Drive Separate Bike Lane - Harrodsburg Road Corridor Study* - Lexington Distillery District Master Plan* - South Limestone Multimodal Transportation Study* 	<p>Contact Name: Keith Lovan Title: Project Manager Phone: 859/258-3478 Email: klovan@lexingtonky.gov</p> <p>Contact Name: Bob Bayert Title: Senior Engineer Phone: 859/258-3441 Email: bobbb@lexingtonky.gov</p>
<p>University of Kentucky</p> <ul style="list-style-type: none"> - Alumni Drive Roadway Realignment - UK/Nicholasville Road Flood Mitigation Project - University Drive Bike Lanes Project - Arboretum Bike Trail 	<p>Contact Name: Keith Ingram Title: Project Manager Phone: 859/218-3108 Email: kingram@email.uky.edu</p> <p>Contact Name: Scotty Bowles Title: Project Manager Phone: 859/218-6380 Email: scott.bowles@uky.edu</p>
<p>Hopkinsville, Kentucky</p> <ul style="list-style-type: none"> - 6th Street TEA-21 - Country Club Lane Extension - Sheffield Downs Subdivision - Westbrooke Subdivision - MSU Drive Extension - Quintin Court Widening - Sorrell Lane - McGowan Way - Lover's Lane Widening - Pyle Lane Curve Realignment - Mount Zoar Road Widening - Trail of Tears Park Entrance Road 	<p>Contact Name: Steven R. Bourne Title: Director Phone: 270/887-4285 Email: sbourne@comdev-services.com</p>
<p>LaGrange, Kentucky</p> <ul style="list-style-type: none"> - LaGrange Transportation & Traffic Study* 	<p>N/A</p>
<p>Kentucky Horse Park</p> <ul style="list-style-type: none"> - Cigar Lane* 	<p>N/A</p>

*Projects completed by Mr. Karrick prior to joining the Bell Engineering team.

4.0 LIST OF PROJECTS

Project Name/Client		Description	Services Provided	Project Team			
				Robert L. Pickerill, PE	Joshua T. Karrick, PLA, ASLA, AICP	James K. Roberts, PE, PLS	Rick Harper, PE, LEED AP
	<p>Harrodsburg Road Corridor Study*</p> <p>LFUCG</p> <p><i>Completed: 2009</i> <i>Construction Cost: N/A</i></p>	<p>This project included planning efforts for the creation of a corridor plan for a 6.7 mile section of Harrodsburg Road from Main Street to Military Pike. The project focused on developing standards and recommendations for landscaping, rain gardens, vegetative swales, sidewalks, bike lanes, bus stops, signage and places for public art. The planning process included the formation of an advisory committee and public meetings to foster input and support for the project.</p>	<ul style="list-style-type: none"> • Planning 		✓		
	<p>UK/Nicholasville Road Flood Mitigation Project</p> <p>University of Kentucky</p> <p><i>Completed: Construction Spring 2014</i> <i>Estimated Construction Cost: \$12,000,000</i></p>	<p>This project includes a number of water quantity and quality control measures to be implemented in the Nicholasville Road area adjacent to Commonwealth Stadium. Pervious pavement and ground detention are proposed in the Blue Lot for stormwater detention, a variety of utility relocations along Shawneetown Drive and Alumni Drive will take place, Shawneetown Drive will be permanently removed and upgrades will be made at the upstream side of the culvert on Nicholasville Road. The project is incorporating the realignment of Alumni Drive and possible additions of two roundabouts. When completed, the project is expected to serve a dual purpose as a passive park with a 900 ft. shared-use asphalt trail and two viewing areas overlooking the relocated stream while including concealed stormwater management attributes that will not be easily discernible.</p>	<ul style="list-style-type: none"> • Planning • Funding Assistance • Design • Permitting • Bidding • Construction Administration • Resident Project Representation 	✓	✓	✓	✓
	<p>University Drive Bike Lanes</p> <p>University of Kentucky</p> <p><i>Completed: 2013</i> <i>Construction Cost: \$115,680</i></p>	<p>This project involved the widening of approximately 700 linear foot of University Drive from the Alumni Drive intersection towards Cooper Drive to install 6 foot wide bike lanes. The project is significant because it connects three previously disconnected sections of the campus bikeway system.</p>	<ul style="list-style-type: none"> • Planning • Design • Permitting • Bidding • Construction Administration 	✓	✓	✓	✓
	<p>Alumni Drive Roadway Realignment</p> <p>University of Kentucky</p> <p><i>Completed: 2015</i> <i>Construction Cost: \$4,163,434</i></p>	<p>The University of Kentucky contracted to have one mile of Alumni Drive reconstructed on campus near Commonwealth Stadium. The road is very highly travelled requiring the reconstruction to be performed between the last day of class in spring 2015 and the return of students on August 17, 2015. Since Bell was involved with other projects in the area and had merged the future Alumni Drive alignment into the plan, we were asked to join the CDM Smith team for design of the roadway realignment project. Bell provided the drainage calculations for the project, landscape architecture services, coordination between adjoining projects and a portion of the inspection services during construction. The final design of the roadway included two roundabouts at intersections and incorporation of a shared use path. The roundabouts required considerable design adjustments in the already ongoing FEMA project.</p>	<ul style="list-style-type: none"> • Planning • Design • Construction Administration 	✓	✓		✓
	<p>Cigar Lane*</p> <p>Kentucky Horse Park</p> <p><i>Completed: 2009</i> <i>Budget: \$2,300,000</i></p>	<p>This project included Phase I and II roadway design for improvements to a 1-mile long section of Cigar Lane in preparation for the 2010 FEI World Equestrian Games. The roadway provided improved safety and access to the new indoor arena through widening Cigar Lane to a three-lane urban section consisting of two 12-foot lanes with one 12-foot center turn lane. Special care was taken to preserve mature sycamore trees within the project area. Also included was a one-lane roundabout at the park entrance with an interior green.</p>	<ul style="list-style-type: none"> • Planning • Design • Permitting 		✓		

*Projects completed by Mr. Karrick prior to joining the Bell Engineering team.

Project Name/Client		Description	Services Provided	Project Team			
				Robert L. Pickerill, PE	Joshua T. Karrick, PLA, ASLA, AICP	James K. Roberts, PE, PLS	Rick Harper, PE, LEED AP
	MSU Drive Extension City of Hopkinsville <i>Completed:</i> 2014 <i>Construction Cost:</i> \$513,830	<p>This project consisted of the design of a 1000 foot road extension for commercial development. The City of Hopkinsville received funding through The State of Kentucky and the project was designed to KTDOH standards. Included in the design was a secondary entrance to the James Bruce Conference Center. The project included roadway, curb and gutter, turning lanes, sidewalks and drainage. The project area had a large stormwater flow to design around. The drainage included large concrete ditches and large diameter piping.</p>	<ul style="list-style-type: none"> • Design • Bidding • Construction Administration • Resident Project Representation 	✓			✓
	Pyle Lane Curve Realignment City of Hopkinsville <i>Completed:</i> 2007 <i>Construction Cost:</i> \$140,000	<p>This project included the reconstruction and realignment of a collector road in the City of Hopkinsville. The curve had a history of accidents including fatalities. Roadway was realigned within the right of way. The culvert was extended and ditch lines were relocated. A super elevation was also added into the alignment.</p>	<ul style="list-style-type: none"> • Design • Bidding • Construction Administration • Resident Project Representation 	✓			
	Quintin Court Widening City of Hopkinsville <i>Completed:</i> 2012 <i>Construction Cost:</i> \$147,050	<p>This project consisted of constructing an additional 6' width on each side of Quintin Court in the industrial park in order to widen approximately 1000 lf of roadway from 2 lanes to 3 lanes. The project also included drainage. Continuous truck traffic was maintained through the site, as was required by the adjacent mill. Coordination with existing utilities was required for lighting and relocation of a water main.</p>	<ul style="list-style-type: none"> • Survey • Design • Bidding • Construction Administration • Resident Project Representation 	✓			
	Country Club Lane Extension City of Hopkinsville <i>Completed:</i> Summer 2014 <i>Construction Cost:</i> \$180,650	<p>This project consisted of 550 LF extension of Country Club Lane (KY 380) in Hopkinsville. Beginning at Ft Campbell Blvd (US 41A), the road will be extended through the commercial area to East 21st Street. Right of Way was acquired from two adjacent commercial businesses and the road will be dedicated, as the area is currently used as access to the businesses and is not sufficient as a roadway. Drainage improvements are included, with the addition of drop box inlets, a storm sewer junction box, headwall, and drain piping. Curb and gutter will be added and a barrier median will improve driver safety at the intersection with US 41A. Permitting through KYTC was required because it is an intersection of State and Federal highways. Utility relocation was coordinated through Bell, as all aerial utilities were moved because of conflicts with the proposed roadway.</p>	<ul style="list-style-type: none"> • Planning • Design • Permitting • Bidding • Construction Administration 	✓			✓
	6th Street TEA-21 City of Hopkinsville <i>Completed:</i> 2010 <i>Construction Cost:</i> \$299,267	<p>This project included reconstruction of Hopkinsville's 6th Street. Overhead utilities were converted to underground and a new decorative intersection was designed at 6th and Main Street. The 6th Street sidewalk was replaced in several locations and new street lighting was installed. In order to preserve the historic street bricks, they were removed and reused at the courthouse. Traffic flow on 6th Street was also reversed to enhance views of the courthouse and significant drainage improvements were made throughout the project area.</p> <p>The project was funded through the Kentucky Transportation Cabinet's TEA-21 grant program. Bell worked closely with staff at the Kentucky Transportation Cabinet during design, permitting and construction.</p>	<ul style="list-style-type: none"> • Planning • Funding Assistance • Design • Permitting • Bidding • Construction Administration 		✓	✓	

STATEMENT OF QUALIFICATIONS
Lexington-Fayette Urban County Government
RFQ#38-2016 Professional Engineering Services
Contract 1 Roadway Corridor and Intersection Design Planning



5.0 LOCAL OFFICE

Attachment 1

Prime Consultant	Location (City, State)	Date Office Established	Total Number of Employees	No. of Employees expected to work on DOE projects
Headquarters	2480 Fortune Drive, Suite 350 Lexington, KY 40509	1914	45	8
Local Office				
PM Location	Lexington, KY			
Subconsultants Name:	Abbie Jones Consulting			
Service Provided	Surveying			
Headquarters	1022 Fontaine Road Lexington, KY 40502	2011	4	4
Local Office				
Name:	LE Gregg Associates			
Service Provided	Geotechnical			
Headquarters	2456 Fortune Drive, Suite 155 Lexington, KY 40509	1957	19	5
Local Office				

Notes:

1. "Headquarters" refers to the corporate office that provides project support to the local office, if applicable. If support comes from multiple locations, use the blank spaces in the form to provide relevant information.
2. Listing of sub-consultants is optional and should only be provided if the prime consultant considers the sub-consultant(s) services to be essential to meeting the required qualifications. In this event, documentation from the sub-consultant(s) shall be submitted in the SOQ that provides a commitment to be a part of the prime consultant's team in providing the stated services. In such cases, for the purpose of evaluating the proposals, committed sub-consultants will be considered to be part of the prime consultant's workforce. Prime consultants face potential disqualification from future work if DOE finds that the identified sub-consultants are not being utilized to deliver assigned work products.



6.0 DBE INVOLVEMENT

Bell Engineering is committed to meeting or exceeding the Lexington-Fayette Urban County Government's (LFUCG) goal that not less than ten percent of the total value of work conducted on projects our team is selected for be performed by certified DBE's. As a local firm, Bell values the effort placed on supporting local businesses and DBE's. We appreciate opportunities to create a 100% local team and support minority and women owned businesses.

Bell keeps LFUCG's list of certified DBE firms on file and refers to the list to contact DBE firms for project opportunities. Additionally, staff attend minority business events to network with DBE owners and employees. We have developed relationships with several DBE firms in Lexington and are frequently in contact regarding teaming opportunities.

Bell has recently utilized DBE's on several projects including:

Abbie Jones Consulting

- Alumni Drive Protected Bike Lanes; LFUCG
- UK Landscape Improvements Project; University of Kentucky
- UK/Nicholasville Road Stormwater Project; University of Kentucky
- South Campus Parking Lot Expansion; University of Kentucky
- Stormwater IDIQ Projects; LFUCG
- Cane Run/Haven Court Stormwater Improvements Project; LFUCG
- Cardinal Lane Stormwater Improvements Project; LFUCG
- Cephas Way Flume Repair Project; LFUCG

Vision Engineering

- Blue Sky Pump Station & Force Main Project; LFUCG

Please see Appendix A for the completed LFUCG MBE/WBE Participation Form.

STATEMENT OF QUALIFICATIONS
Lexington-Fayette Urban County Government
RFQ#38-2016 Professional Engineering Services
Contract 1 Roadway Corridor and Intersection Design Planning



APPENDIX

Bell Engineering Affirmative Action Plan

Required Affidavit

Equal Opportunity Agreement

Workforce Analysis Form

MWDBE Participation Form

Statement of Good Faith Efforts

General Provisions

**AFFIRMATIVE ACTION PLAN FOR
EQUAL EMPLOYMENT OPPORTUNITY AT
BELL ENGINEERING**

1. Policy

It is the policy of this firm to provide equal employment opportunity to all persons without regard to their race, color, religion, sex, age, veteran status, handicap, or national origin, and to promote the full realization of equal employment opportunity through a positive continuing program. The firm will assure that applicants are recruited and hired, and that employees are treated without regard to their race, color, religion, sex, age, veteran status, handicap, or national origin. Equal opportunity and equal consideration will be afforded to all applicants and employees in personnel actions which include recruiting and hiring, selection for training, promotion, fixing rates of pay or other compensation, transfer and layoff or termination. It is our intention, in the implementation of this policy, to provide full employment opportunities for members of minority groups. Furthermore, it is our policy to coordinate the affirmative action program directed at seeking personnel from minority groups for employment with the firm and to provide encouragement and direction to our staff to advance within the limits of each individual's capabilities.

2. Dissemination of Policy

Our equal employment opportunity is and will be communicated to all relevant audiences within and outside the firm. These include non-discrimination policy statements in our personnel manuals and memoranda, and employee information literature; posting of EEO posters on bulletin boards; periodic written and oral statements of policy from the firm to its management staff; discussion of policy and affirmative action plans in management meetings and development sessions; recruiting practices that will provide equal opportunity to all persons possessing requisite skills seeking employment with this firm.

3. Responsibility for Implementation of Policy

A firm officer will be responsible for the implementation of our affirmative action policy and will direct our equal employment opportunity program. His responsibilities will include: (1) developing policy statements, affirmative action programs, internal and external communication techniques; (2) assisting in the identification of problem areas; (3) assisting project engineers and project managers in arriving at solutions to problems; (4) designing and implementing audit and report systems that will measure the effectiveness of the program, indicate a need for remedial action, and determine the degree to which the goals and objectives of the firm's progress have been attained; (5) serving as liaison between the firm and enforcement agencies, minority organizations and community action groups; (6) keeping

the management informed of the latest developments in the entire equal employment opportunity area.

4. Analysis of Firm Employment

The attached Table 1 provides a breakdown of total employment into job categories based on position description having equivalent pay grades. Also, the table contains minority and women employment per job category, overall percentage within our recruiting area, and the percentage of those possessing the necessary employment skills. Our recruiting area for engineers is nationwide while that for designers/planners, engineering technicians, inspectors, draftspersons, and economists is mostly state-wide. Beginning inspectors, draftspersons, administrative assistants and secretaries are recruited within the Standard Metropolitan Statistical Area.

In analyzing our utilization in each job category, we have arrived at the following conclusions:

a. Job Category: Consultant

Discussion: Consultants are long-term employees, presently retired from full-time service but still working part-time, providing a special expertise to the firm.

Conclusion: This is not an under-utilization area. In furthering our equal employment opportunity policy, we will continue to encourage and promote full opportunity to minority and women employees with the requisite skill and tenure to advance to this position.

b. Job Category: Principal

Discussion: Principals are the owners of the firm. Openings for these positions are created only through action of the Board of Directors. All principals own stock in the firm and any new principal will have to purchase available stock.

Conclusion: Because openings in this category are extremely limited, the establishment of specific goals cannot realistically be accomplished. In furthering our equal employment opportunity policy, we will encourage and promote full opportunity for minority and women employees with the requisite skill and tenure to advance to this position.

c. Job Category: Engineer

Discussion: Within the recruiting area, minorities possessing the requisite skills for this category represent approximately 5.3 percent of the experienced work force.

Conclusion: This is not an under-utilization area. However, in furthering our equal employment opportunity policy, we will encourage and promote full opportunity for minority and women employees with the requisite skills and education.

- d. Job Category: Architect
Discussion: Within the recruiting area, minorities possessing the requisite skills for this category represent approximately 5.3 percent of the experienced work force.
Conclusion: This is not an under-utilization area. However, in furthering our equal employment opportunity policy, we will encourage and promote full opportunity for minority and women employees with the requisite skills and education.

- e. Job Category: Designer/Planner
Discussion: Within the recruiting area, minorities possessing the requisite skills for this category represent approximately 20.1 percent of the experienced work force.
Conclusion: When an opening occurs, we will encourage and promote full opportunity for minority and women employees with the requisite skills and education.

- f. Job Category: Engineering Technician
Discussion: Within the recruiting area, minorities possessing the requisite skills for this category represent approximately 20.1 percent of the experienced work force.
Conclusion: When an opening occurs we will encourage and promote full opportunity for minority and women employees with the requisite skills and education.

- g. Job Category: Inspector/Operations Specialist
Discussion: Within the recruiting area, minorities possessing the requisite skills for this category represent approximately 20.1 percent of the experienced work force.
Conclusion: When an opening occurs, we will encourage and promote full opportunity for minority and women employees with the requisite skills to fill such positions.

- h. Job Category: Draftsperson
Discussion: Within the recruiting area, minorities possessing the requisite skills for this category represent approximately 23.7 percent of the experienced work force.
Conclusion: When an opening occurs, we will encourage and promote full opportunity for minority and women employees with the requisite skills to fill such positions.

- i. Job Category: Accountant/Economist
Discussion: Within the recruiting area, minorities and women possessing the requisite skills for this position represent approximately 49.1 percent of the experienced work force. When an opening occurs, we will encourage and promote full opportunity for minority and women employees with the requisite skills to fill such positions.
Conclusion: This is not an under-utilization area.

- j. Job Category: Administrative Assistant
Discussion: Within the recruiting area minorities and women possessing the requisite skills for this category represent approximately 49.1 percent of the experi-

enced work force. When an opening occurs, we will encourage and promote full opportunity for minority and women employees with the requisite skills to fill such positions.

Conclusion: This is not an under-utilization area.

k. Job Category: Secretary

Discussion: Within the recruiting area minorities and women possessing the requisite skills for this category represent approximately 98.9 percent of the experienced work force. When an opening occurs, we will encourage and promote full opportunity for minority and women employees with the requisite skills to fill such positions.

Conclusion: This is not an under-utilization area.

5. Goals and Timetables

Because of the current business climate, we do not anticipate an increase in our total number of employees in the next six to 12 months. During this time it is expected that new employees will be hired only to replace those employees who resign or leave for other reasons. Any immediate goals in terms of specific numbers will be on the conservative side if we expect to realistically attain these goals. The largest turn-over of employment is in the job categories of draftspersons and secretaries, so our maximum emphasis of recruiting minorities will be in these categories.

Although primarily dependent upon the work load and the needs to fill vacancies, the immediate goals of this firm are to increase minority and women employment in the job categories of engineering technician, inspector/operations specialist, draftsperson and secretary.

The firm will strive to fill any vacancies in a manner that will meet the goals set forth as follows:

<u>Position</u>	<u>New Minority Employees</u>	<u>Target Date</u>
Secretary	1	1 year
Engineering Technician	2	2 years
Inspector/Operations Spec.	1	1 year
Draftsperson	1	1 year

These goals, together with 16 present minority and women employees, project a total minority employment by our firm of 20, for approximately 21 percent at the end of one year, and 21 for approximately 22 percent by the end of two years.

At every six-month period our goals will be reevaluated in light of business conditions and the success of our recruiting efforts. Our long-range goal is to employ a percentage of minorities and women with requisite skills at least equal to the percentage of minorities within our recruiting area.

6. Development and Execution of Program

a. Recruiting

Our recruiting program will be conducted in a manner to ensure we are reaching minority and women prospects. At such times that openings may occur within our staff, we will place notices of employment in appropriate media readily available to all persons seeking employment.

b. Training

We have previously hired minorities from the local technical institute and plan to utilize this source in the future. It is our present policy to provide on-the-job training for new employees. This policy is and will continue to be applicable to minority and women employees. As employees progress, they will be promoted to a higher position of responsibility and compensation commensurate to their skills and contributions.

c. Personnel Actions

Personnel actions of every type including hiring, upgrading, promotion, transfer, demotion, layoff, and termination will be periodically reviewed to ensure the action was taken without bias. During meetings with supervisory personnel, their actions will be reviewed to ensure their support of the firm's equal employment policy.

d. Community Relations

Representatives of the firm will cooperate with the appropriate agencies and groups within the community in the further development of community acceptance and adoption of nondiscrimination practices in employment.

7. Audit Report and Evaluate

The firm has instituted an audit and reporting system which consists of the following:

a. Job Openings

A list of applicants will be kept for each job opening. An informal record solely for statistical purposes will be maintained to identify minority and women applicants where practical. If the minority and women applicant is not hired, the reason will be recorded.

b. Separation

A record of separation and the reason of separation will be maintained and minority and women group employees will be specifically identified. A thorough check will be made to ensure that discrimination did not enter the separation.

c. Promotions

A record of promotions by employee name and category will be maintained with minority and women employees specifically identified. Again this information will be maintained solely for statistical purposes.

The firm member in charge will periodically review and evaluate the status of the affirmative action program, and will report at each meeting of the firm members and associates on the progress and success of our program.

8. Adoption of Policy

The Affirmative Action Plan for equal employment opportunity is hereby adopted the first day of January, 1997.

By 

Roy L. Bohon, II
Secretary-Treasurer

By 

James K. Roberts, PE, PLS
Executive Vice President

Date November 10, 2016

AFFIDAVIT

Comes the Affiant, James K. Roberts, PE, PLS, and after being first duly sworn, states under penalty of perjury as follows:

1. His/her name is James K. Roberts, PE, PLS and he/she is the individual submitting the proposal or is the authorized representative of Bell Engineering, the entity submitting the proposal (hereinafter referred to as "Proposer").

2. Proposer will pay all taxes and fees, which are owed to the Lexington-Fayette Urban County Government at the time the proposal is submitted, prior to award of the contract and will maintain a "current" status in regard to those taxes and fees during the life of the contract.

3. Proposer will obtain a Lexington-Fayette Urban County Government business license, if applicable, prior to award of the contract.

4. Proposer has authorized the Division of Central Purchasing to verify the above-mentioned information with the Division of Revenue and to disclose to the Urban County Council that taxes and/or fees are delinquent or that a business license has not been obtained.

5. Proposer has not knowingly violated any provision of the campaign finance laws of the Commonwealth of Kentucky within the past five (5) years and the award of a contract to the Proposer will not violate any provision of the campaign finance laws of the Commonwealth.

6. Proposer has not knowingly violated any provision of Chapter 25 of the Lexington-Fayette Urban County Government Code of Ordinances, known as "Ethics Act."

Continued on next page

7. Proposer acknowledges that "knowingly" for purposes of this Affidavit means, with respect to conduct or to circumstances described by a statute or ordinance defining an offense, that a person is aware or should have been aware that his conduct is of that nature or that the circumstance exists.

Further, Affiant sayeth naught.

James K. Roberts PE, PLS

STATE OF Kentucky

COUNTY OF Fayette

The foregoing instrument was subscribed, sworn to and acknowledged before me by James K. Roberts, PE, PLS on this the 10th day of November, 2016.

My Commission expires: Oct. 14, 2017

David Ball
NOTARY PUBLIC, STATE AT LARGE

EQUAL OPPORTUNITY AGREEMENT

The Law

- Title VII of the Civil Rights Act of 1964 (amended 1972) states that it is unlawful for an employer to discriminate in employment because of race, color, religion, sex, age (40-70 years) or national origin.
- Executive Order No. 11246 on Nondiscrimination under Federal contract prohibits employment discrimination by contractor and sub-contractor doing business with the Federal Government or recipients of Federal funds. This order was later amended by Executive Order No. 11375 to prohibit discrimination on the basis of sex.
- Section 503 of the Rehabilitation Act of 1973 states:

The Contractor will not discriminate against any employee or applicant for employment because of physical or mental handicap.

- Section 2012 of the Vietnam Era Veterans Readjustment Act of 1973 requires Affirmative Action on behalf of disabled veterans and veterans of the Vietnam Era by contractors having Federal contracts.
- Section 206(A) of Executive Order 12086, Consolidation of Contract Compliance Functions for Equal Employment Opportunity, states:

The Secretary of Labor may investigate the employment practices of any Government contractor or sub-contractor to determine whether or not the contractual provisions specified in Section 202 of this order have been violated.

The Lexington-Fayette Urban County Government practices Equal Opportunity in recruiting, hiring and promoting. It is the Government's intent to affirmatively provide employment opportunities for those individuals who have previously not been allowed to enter into the mainstream of society. Because of its importance to the local Government, this policy carries the full endorsement of the Mayor, Commissioners, Directors and all supervisory personnel. In following this commitment to Equal Employment Opportunity and because the Government is the benefactor of the Federal funds, it is both against the Urban County Government policy and illegal for the Government to let contracts to companies which knowingly or unknowingly practice discrimination in their employment practices. Violation of the above mentioned ordinances may cause a contract to be canceled and the contractors may be declared ineligible for future consideration.

Please sign this statement in the appropriate space acknowledging that you have read and understand the provisions contained herein. Return this document as part of your application packet.

Bidders

I/We agree to comply with the Civil Rights Laws listed above that govern employment rights of minorities, women, Vietnam veterans, handicapped and aged persons.


Signature

Bell Engineering
Name of Business

WORKFORCE ANALYSIS FORM

Name of Organization: Bell Engineering

Categories	Total	White (Not Hispanic or Latino)		Hispanic or Latino		Black or African-American (Not Hispanic or Latino)		Native Hawaiian and Other Pacific Islander (Not Hispanic or Latino)		Asian (Not Hispanic or Latino)		American Indian or Alaskan Native (Not Hispanic or Latino)		Two or More Races (Not Hispanic or Latino)		Total
		M	F	M	F	M	F	M	F	M	F	M	F	M	F	
Administrators	4	2	2											2	2	
Professionals	16	16												16		
Superintendents																
Supervisors	1	1												1		
Foremen	8	8												8		
Technicians	9	8	1											8	1	
Protective Service																
Para-Professionals	1	1												1		
Office/Clerical	3	1	2											1	2	
Skilled Craft																
Service/Maintenance																
Total:	42	37	5											37	5	

Prepared By: Megan Hogan, Director of Marketing
Name & Title

Date: 11 / 10 / 2016



LFUCG MWDBE PARTICIPATION FORM

Bid/RFP/Quote Reference # RFQ #38-2016 Professional Engineering Services
Contract 1 – Roadway Corridor & Intersection Design Planning

The MWDBE subcontractors listed have agreed to participate on this Bid/RFP/Quote. If any substitution is made or the total value of the work is changed prior to or after the job is in progress, it is understood that those substitutions must be submitted to Central Purchasing for approval immediately.

MWDBE Company, Name, Address, Phone, Email	Work to be Performed	Total Dollar Value Of the Work	% Value of Total Contract
1. Abbie Jones Consulting Abbie Jones, P.E. 1022 Fontaine Road Lexington, KY 40502 859/559-3443 abbie@abbie-jones.com	Surveying Services	N/A	~ 10%
2.			
3.			
4.			

The undersigned company representative submits the above list of MWDBE firms to be used in accomplishing the work contained in this Bid/RFP/Quote. Any misrepresentation may result in the termination of the contract and/or be subject to applicable Federal and State laws concerning false statements and false claims.

Bell Engineering
Company

November 10, 2016
Date

By *James W. Roberts P.E., PLS*

Executive Vice President
Title

LFUCG STATEMENT OF GOOD FAITH EFFORTS
Bid/RFP/Quote # 38-2016

By the signature below of an authorized company representative, we certify that we have utilized the following Good Faith Efforts to obtain the maximum participation by MWDBE and Veteran-Owned business enterprises on the project and can supply the appropriate documentation.

_____ Advertised opportunities to participate in the contract in at least two (2) publications of general circulation media; trade and professional publications; small and minority business or trade publications; and publications or trades targeting minority, women and disadvantaged businesses not less than fifteen (15) days prior to the deadline for submission of bids to allow MWDBE firms and Veteran-Owned businesses to participate.

_____ Included documentation of advertising in the above publications with the bidders good faith efforts package.

X Attended LFUCG Central Purchasing Economic Inclusion Outreach event.

X Attended pre-bid meetings that were scheduled by LFUCG to inform MWDBEs and/or Veteran-Owned Businesses of subcontracting opportunities.

_____ Sponsored Economic Inclusion event to provide networking opportunities for prime contractors and MWDBE firms and Veteran-Owned Businesses.

_____ Requested a list of MWDBE and/or Veteran subcontractors or suppliers from LFUCG Economic Engine and showed evidence of contacting the companies on the list(s).

_____ Contacted organizations that work with MWDBE companies for assistance in finding certified MWDBE firms and Veteran-Owned businesses to work on this project. Those contacted and their responses should be a part of the bidder's good faith efforts documentation.

_____ Sent written notices, by certified mail, email or facsimile, to qualified, certified MWDBEs soliciting their participation in the contract not less than seven (7) days prior to the deadline for submission of bids to allow them to participate effectively.

_____ Followed up initial solicitations by contacting MWDBEs and Veteran-Owned businesses to determine their level of interest.

_____ Provided the interested MWDBE firm and/or Veteran-Owned business with adequate and timely information about the plans, specifications, and requirements of the contract.

_____ Selected portions of the work to be performed by MWDBE firms and/or Veteran-Owned businesses in order to increase the likelihood of meeting the contract goals. This includes, where appropriate, breaking out contract work items into

economically feasible units to facilitate MWDBE and Veteran participation, even when the prime contractor may otherwise perform these work items with its own workforce.

_____ Negotiated in good faith with interested MWDBE firms and Veteran-Owned businesses not rejecting them as unqualified without sound reasons based on a thorough investigation of their capabilities. Any rejection should be so noted in writing with a description as to why an agreement could not be reached.

_____ Included documentation of quotations received from interested MWDBE firms and Veteran-Owned businesses which were not used due to uncompetitive pricing or were rejected as unacceptable and/or copies of responses from firms indicating that they would not be submitting a bid.

_____ Bidder has to submit sound reasons why the quotations were considered unacceptable. The fact that the bidder has the ability and/or desire to perform the contract work with its own forces will not be considered a sound reason for rejecting a MWDBE and/or Veteran-Owned business's quote. Nothing in this provision shall be construed to require the bidder to accept unreasonable quotes in order to satisfy MWDBE and Veteran goals.

_____ Made an effort to offer assistance to or refer interested MWDBE firms and Veteran-Owned businesses to obtain the necessary equipment, supplies, materials, insurance and/or bonding to satisfy the work requirements of the bid proposal.

_____ Made efforts to expand the search for MWDBE firms and Veteran-Owned businesses beyond the usual geographic boundaries.

_____ Other – any other evidence that the bidder submits which may show that the bidder has made reasonable good faith efforts to include MWDBE and Veteran participation.

NOTE: Failure to submit any of the documentation requested in this section may be cause for rejection of bid. Bidders may include any other documentation deemed relevant to this requirement which is subject to approval by the MBE Liaison. Documentation of Good Faith Efforts must be submitted with the Bid, if the participation Goal is not met.

The undersigned acknowledges that all information is accurate. Any misrepresentations may result in termination of the contract and/or be subject to applicable Federal and State laws concerning false statements and claims.

Bell Engineering
Company

November 10, 2016
Date


Company Representative

Executive Vice President
Title

GENERAL PROVISIONS

1. Each Respondent shall comply with all Federal, State & Local regulations concerning this type of service or good.

The Respondent agrees to comply with all statutes, rules, and regulations governing safe and healthful working conditions, including the Occupational Health and Safety Act of 1970, *29 U.S.C. 650 et. seq.*, as amended, and KRS Chapter 338. The Respondent also agrees to notify the LFUCG in writing immediately upon detection of any unsafe and/or unhealthful working conditions at the job site. The Respondent agrees to indemnify, defend and hold the LFUCG harmless from all penalties, fines or other expenses arising out of the alleged violation of said laws.

2. Failure to submit ALL forms and information required in this RFP may be grounds for disqualification.
3. Addenda: All addenda, if any, shall be considered in making the proposal, and such addenda shall be made a part of this RFP. Before submitting a proposal, it is incumbent upon each proposer to be informed as to whether any addenda have been issued, and the failure to cover in the bid any such addenda may result in disqualification of that proposal.
4. Proposal Reservations: LFUCG reserves the right to reject any or all proposals, to award in whole or part, and to waive minor immaterial defects in proposals. LFUCG may consider any alternative proposal that meets its basic needs.
5. Liability: LFUCG is not responsible for any cost incurred by a Respondent in the preparation of proposals.
6. Changes/Alterations: Respondent may change or withdraw a proposal at any time prior to the opening; however, no oral modifications will be allowed. Only letters, or other formal written requests for modifications or corrections of a previously submitted proposal which is addressed in the same manner as the proposal, and received by LFUCG prior to the scheduled closing time for receipt of proposals, will be accepted. The proposal, when opened, will then be corrected in accordance with such written request(s), provided that the written request is contained in a sealed envelope which is plainly marked "modifications of proposal".
7. Clarification of Submittal: LFUCG reserves the right to obtain clarification of any point in a bid or to obtain additional information from a Respondent.
8. Bribery Clause: By his/her signature on the bid, Respondent certifies that no employee of his/hers, any affiliate or Subcontractor, has bribed or attempted to bribe an officer or employee of the LFUCG.
9. Additional Information: While not necessary, the Respondent may include any

product brochures, software documentation, sample reports, or other documentation that may assist LFUCG in better understanding and evaluating the Respondent's response. Additional documentation shall not serve as a substitute for other documentation which is required by this RFP to be submitted with the proposal.

10. Ambiguity, Conflict or other Errors in RFP: If a Respondent discovers any ambiguity, conflict, discrepancy, omission or other error in the RFP, it shall immediately notify LFUCG of such error in writing and request modification or clarification of the document if allowable by the LFUCG.
11. Agreement to Bid Terms: In submitting this proposal, the Respondent agrees that it has carefully examined the specifications and all provisions relating to the work to be done attached hereto and made part of this proposal. By acceptance of a Contract under this RFP, proposer states that it understands the meaning, intent and requirements of the RFP and agrees to the same. The successful Respondent shall warrant that it is familiar with and understands all provisions herein and shall warrant that it can comply with them. No additional compensation to Respondent shall be authorized for services or expenses reasonably covered under these provisions that the proposer omits from its Proposal.
12. Cancellation: If the services to be performed hereunder by the Respondent are not performed in an acceptable manner to the LFUCG, the LFUCG may cancel this contract for cause by providing written notice to the proposer, giving at least thirty (30) days notice of the proposed cancellation and the reasons for same. During that time period, the proposer may seek to bring the performance of services hereunder to a level that is acceptable to the LFUCG, and the LFUCG may rescind the cancellation if such action is in its best interest.

A. Termination for Cause

- (1) LFUCG may terminate a contract because of the contractor's failure to perform its contractual duties
- (2) If a contractor is determined to be in default, LFUCG shall notify the contractor of the determination in writing, and may include a specified date by which the contractor shall cure the identified deficiencies. LFUCG may proceed with termination if the contractor fails to cure the deficiencies within the specified time.
- (3) A default in performance by a contractor for which a contract may be terminated shall include, but shall not necessarily be limited to:
 - (a) Failure to perform the contract according to its terms, conditions and specifications;
 - (b) Failure to make delivery within the time specified or according to a delivery schedule fixed by the contract;

- (c) Late payment or nonpayment of bills for labor, materials, supplies, or equipment furnished in connection with a contract for construction services as evidenced by mechanics' liens filed pursuant to the provisions of KRS Chapter 376, or letters of indebtedness received from creditors by the purchasing agency;
- (d) Failure to diligently advance the work under a contract for construction services;
- (e) The filing of a bankruptcy petition by or against the contractor; or
- (f) Actions that endanger the health, safety or welfare of the LFUCG or its citizens.

B. At Will Termination

Notwithstanding the above provisions, the LFUCG may terminate this contract at will in accordance with the law upon providing thirty (30) days written notice of that intent, Payment for services or goods received prior to termination shall be made by the LFUCG provided these goods or services were provided in a manner acceptable to the LFUCG. Payment for those goods and services shall not be unreasonably withheld.

13. **Assignment of Contract:** The contractor shall not assign or subcontract any portion of the Contract without the express written consent of LFUCG. Any purported assignment or subcontract in violation hereof shall be void. It is expressly acknowledged that LFUCG shall never be required or obligated to consent to any request for assignment or subcontract; and further that such refusal to consent can be for any or no reason, fully within the sole discretion of LFUCG.
14. **No Waiver:** No failure or delay by LFUCG in exercising any right, remedy, power or privilege hereunder, nor any single or partial exercise thereof, nor the exercise of any other right, remedy, power or privilege shall operate as a waiver hereof or thereof. No failure or delay by LFUCG in exercising any right, remedy, power or privilege under or in respect of this Contract shall affect the rights, remedies, powers or privileges of LFUCG hereunder or shall operate as a waiver thereof.
15. **Authority to do Business:** The Respondent must be a duly organized and authorized to do business under the laws of Kentucky. Respondent must be in good standing and have full legal capacity to provide the services specified under this Contract. The Respondent must have all necessary right and lawful authority to enter into this Contract for the full term hereof and that proper corporate or other action has been duly taken authorizing the Respondent to enter into this Contract. The Respondent will provide LFUCG with a copy of a corporate resolution authorizing this action and a letter from an attorney confirming that the proposer is authorized to do business in the State of Kentucky if requested. All proposals must be signed by a duly authorized officer, agent or employee of the Respondent.

16. **Governing Law:** This Contract shall be governed by and construed in accordance with the laws of the Commonwealth of Kentucky. In the event of any proceedings regarding this Contract, the Parties agree that the venue shall be the Fayette County Circuit Court or the U.S. District Court for the Eastern District of Kentucky, Lexington Division. All parties expressly consent to personal jurisdiction and venue in such Court for the limited and sole purpose of proceedings relating to this Contract or any rights or obligations arising thereunder. Service of process may be accomplished by following the procedures prescribed by law.
17. **Ability to Meet Obligations:** Respondent affirmatively states that there are no actions, suits or proceedings of any kind pending against the Respondent or, to the knowledge of the Respondent, threatened against the Respondent before or by any court, governmental body or agency or other tribunal or authority which would, if adversely determined, have a materially adverse effect on the authority or ability of Respondent to perform its obligations under this Contract, or which question the legality, validity or enforceability hereof or thereof.
18. Contractor understands and agrees that its employees, agents, or subcontractors are not employees of LFUCG for any purpose whatsoever. Contractor is an independent contractor at all times during the performance of the services specified.
19. If any term or provision of this Contract shall be found to be illegal or unenforceable, the remainder of the contract shall remain in full force and such term or provision shall be deemed stricken.


Signature

November 10, 2016
Date

Executive Vice President
Title

bell
engineering



Proudly
Serving
Kentucky
For 102 Years



Lexington, KY

859/278-5412

Hopkinsville, KY

270/886-5466

www.hkbell.com