



**AGREEMENT FOR SERVICES TO BE PERFORMED  
IN CONJUNCTION WITH GOVERNMENTAL AGENCIES**

This agreement made and entered into by and between Kentucky Department of Highways, party of the first part, and Lex-Fayette Urban County Government (LFUCG), party of the second part.

WITNESSETH:

WHEREAS, the party of the second part has requested the party of the first part to perform the hereinafter described services, and

WHEREAS, the party of the first part has agreed to perform said services at the expense of the party of the second part.

NOW THEREFORE, it is hereby agreed between the parties hereto as follows:

- (1) The party of the first part does agree to perform the hereinafter described services and does agree to interaccount the party of the second part for the actual costs incurred in rendering said services.
- (2) The party of the first part agrees that the herein described services are to be performed on or about \_\_\_\_\_ and contingent upon available materials with priority given to state \_\_\_\_\_  
Date  
forces usage.
- (3) The party of the second part does agree to be liable to the party of the first part for the actual costs of the herein described services and to pay the actual costs of said services upon being interaccounted for said services by the party of the first part.
- (4) The party of the second part agrees that the services requested herein will be for public use and that no part will be diverted to private use. If the service requested herein involves the sale of bulk materials (salt, stone, etc.) to the second party, the second party agrees that these bulk materials will be used only on public right of way.

**LOCATION OF SERVICES TO BE PERFORMED** Brannon Rd Extension Project (15-1086)

**DESCRIPTION OF SERVICES** *(Please limit to 5 lines of text for accurate printing.)*

The electrical contractor for the Brannon Rd Extension Project (PCN: 15-1086) will be installing 275 LF of 2" SDR 11.5 Continuous Duct and 2 EA 17"x30" Communication Junction Boxes at Station 349+00 for the future installation of a LFUCG fiber optic line.

**ESTIMATION OF COSTS FOR SERVICES TO BE PERFORMED**

<b>LABOR COST</b>	_____	<b>Note: Due to fluctuation in costs, estimated amount is subject to change. Estimated amount is valid for 30 days.</b>
<b>MATERIALS COST</b>	\$ <u>5,051.75</u>	
<b>EQUIPMENT RENTAL COST</b>	_____	
<b>SUPPORT COST</b>	_____	
		<b>TOTAL \$ <u>5,051.75</u></b>

IN TESTIMONY WHEREOF, witness the duly authorized signatures of the parties hereto this

_____ Day/Month/Year	_____ State Highway Engineer (Required on agreements in excess of \$5000 and all winter materials.)	
_____ Party of the First Part	_____ Title	_____ Approved as to form and legality.
_____ Party of the Second Part	_____ Title	_____ KYTC Legal Services



**AGREEMENT FOR SERVICES TO BE PERFORMED  
IN CONJUNCTION WITH GOVERNMENTAL AGENCIES**

**TASK ORDER DATA SHEET**

Please forward Pages 1 and 2 to the Division of Accounts  
Phone: 502-564-7334 Fax: 502-564-5621

COUNTY Jessamine LOCATION OF TASK ORDER Brannon Rd Extension

SECOND PARTY NAME LFUCG FEDERAL ID/SSN: \_\_\_\_\_  
(If Applicable)

SECOND PARTY ADDRESS 125 Lisle Industrial Ave St. 180

SECOND PARTY CONTACT Steve Farmer, PE PHONE 859-425-2404

NAME OF KYTC DISTRICT EMPLOYEE OVERSEEING TASK Lucy Ward

DISTRICT PHONE NUMBER 859-246-2355

DISTRICT FAX NUMBER 859-246-2354

NAME OF PERSON(S) POSTING TASK ORDER CHARGES Josie Robertson or Suzan LeSage

START DATE \_\_\_\_\_ ESTIMATED END DATE \_\_\_\_\_

SUBMITTED BY District Bookkeeper DATE \_\_\_\_\_

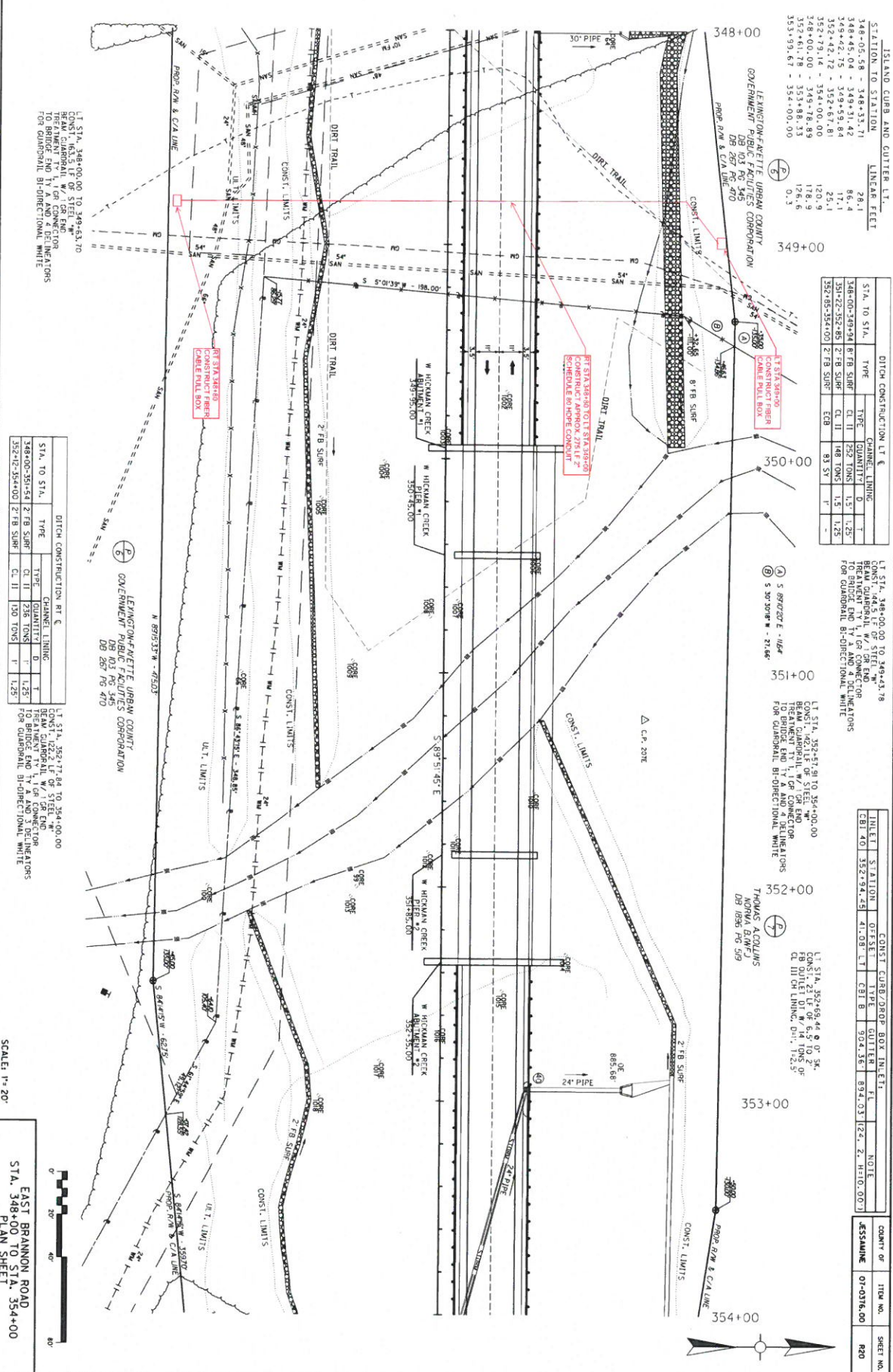
**SECTION 4: FUNDING INFORMATION (Please fill out as completely as possible.)**

FUND	DEPT	UNIT	LOCATION	FUNCTION	SUB-FUNCTION	ACTIVITY	OBJECT	TASK ORDER
1100	625	700	7	FD04	57	4010		

ISSUED BY Central Office Accounts Staff DATE \_\_\_\_\_  
*Program - 8699701C*

PHONE: 502-564-7334 FAX: 502-564-5621





LT STA. 348+00.00 TO 349+53.70  
 CONST. 146.5 LF OF STEEL W/ 10' OF CONNECTION  
 TO BRIDGE END BY A AND 4 DELINEATORS  
 FOR QUADRANTAL BI-DIRECTIONAL WHITE

STA. TO STA.	TYPE	CHANNEL LINING	QTY	UNIT
348+00-352+42.78	2 FT B SURF	CL II	1238 TONS	1.25
352+42.78-354+00	2 FT B SURF	CL III	100 TONS	1.25

LEWINGTON-FALLETTE URBAN COUNTY  
 GOVERNMENT PUBLIC UTILITIES CORPORATION  
 DB 267 PG 470

LT STA. 352+42.78 TO 354+00.00  
 CONST. 146.5 LF OF STEEL W/ 10' OF CONNECTION  
 TO BRIDGE END BY A AND 4 DELINEATORS  
 FOR QUADRANTAL BI-DIRECTIONAL WHITE

SCALE: 1" = 20'  
 STA. 348+00 TO STA. 354+00  
 PLAN SHEET

STATION TO STATION LINEAR FEET

348+00-348+38.71	86.71
348+38.71-349+00.00	61.29
349+00.00-349+53.70	53.70
<b>TOTAL</b>	<b>201.70</b>

STA. TO STA.	TYPE	CHANNEL LINING	QTY	UNIT
348+00-352+42.78	2 FT B SURF	CL II	1238 TONS	1.25
352+42.78-354+00	2 FT B SURF	CL III	100 TONS	1.25

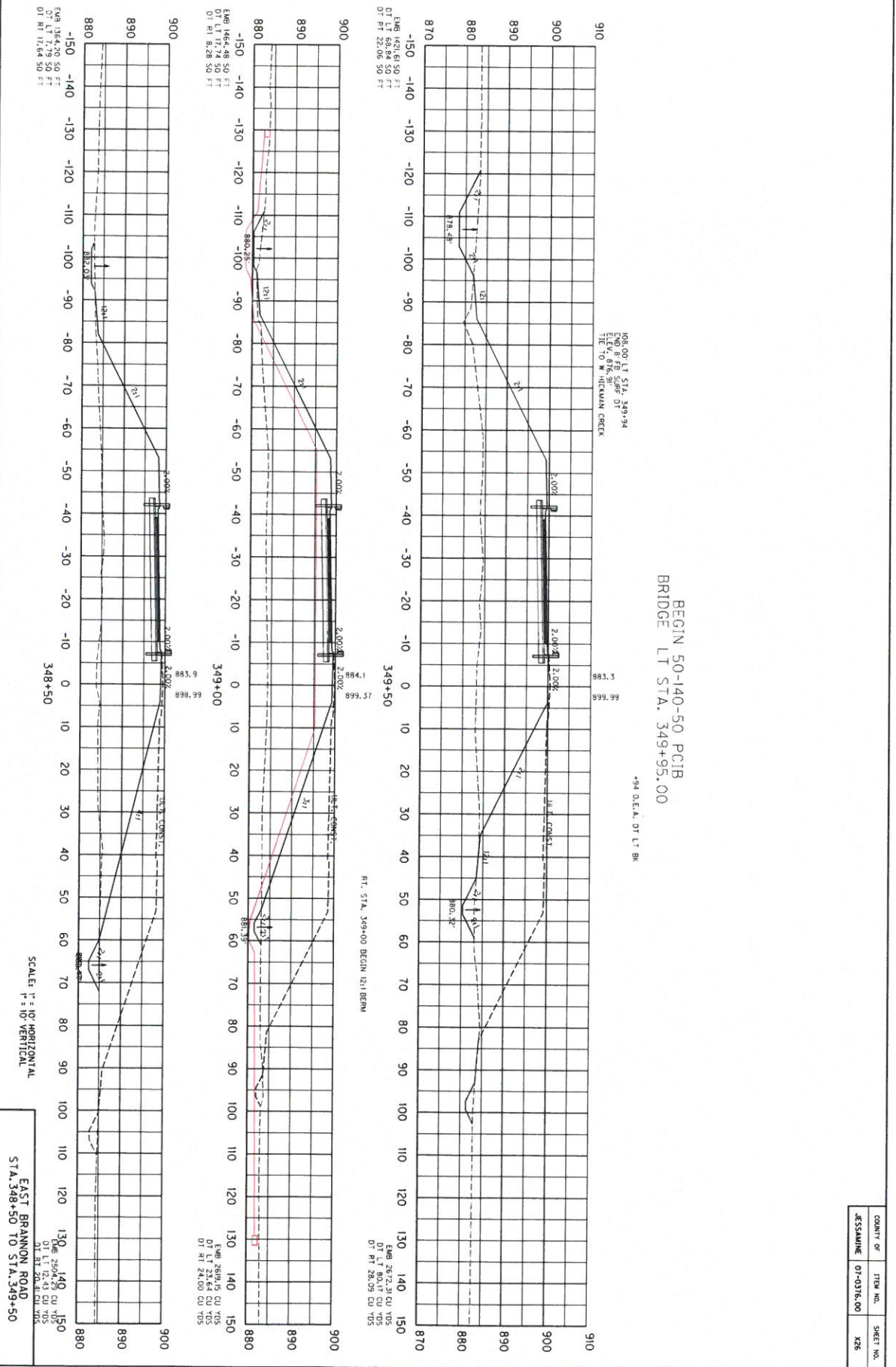
LT STA. 348+00.00 TO 349+53.70  
 CONST. 146.5 LF OF STEEL W/ 10' OF CONNECTION  
 TO BRIDGE END BY A AND 4 DELINEATORS  
 FOR QUADRANTAL BI-DIRECTIONAL WHITE

INLET	STATION	CONST. CURB/CHOP BOX INLETS	NOTE
CB1 40	352+94.45	41.00 LT	
CB1 B	353+58	894.03	124' ZI. N.H.I.O. 007

LEWINGTON-FALLETTE URBAN COUNTY  
 GOVERNMENT PUBLIC UTILITIES CORPORATION  
 DB 267 PG 470

COUNTY OF  
 JESSAMINE  
 07-0316.00  
 R00

SHEET NO.



COUNTY OF	ITEM NO.	SHEET NO.
JESSAMINE	07-0376.00	286

SCALE: 1" = 10' HORIZONTAL  
1" = 10' VERTICAL

EAST BRANNON ROAD  
STA. 348+50 TO STA. 349+50