

Change Order Request - PR-18 Added corner trim for rain screen panels

768-- LFUCG Senior and Therapeutic Center

5/5/2026 1:19:44 PM



Summary of work

Scope - Subcontractor	Description	Cost
		\$37,664.00

o Roofing - Eskola Roofing ==> ==> \$37,664.00

Sub Total:	\$37,664.00
Mark Up:	\$5,649.60
Negotiated Project:	\$0.00
Total	\$43,313.60

Approved By: _____

Submitted By: Calhoun _____

Date: _____

Date: _____



- Owner
- Architect
- Contractor
- Field
- Other

PROPOSAL REQUEST

Project:	Lexington STC	Proposal Request number:	18
Owner:	LFUCG	Date:	4/24/2026
To:	Calhoun Construction Services	File Number:	PR-18.pdf

Please submit an itemized quotation for changes in the Contract Sum and/or Time incidental to proposed modifications to the Contract Documents described herein.

THIS IS NOT A CHANGE ORDER NOR A DIRECTION TO PROCEED WITH THE WORK DESCRIBED HEREIN.

Description of Change(s):

Revised details for the phenolic panel rainscreen system.

Attachments: ASK-21

Origination of Change(s): Owner requested revisions.

**LEXINGTON -
FAYETTE URBAN
COUNTY
GOVERNMENT
SENIOR AND
THERAPEUTIC
CENTER**

3360 Shiloto Park Road
Lexington, KY 40503

READY TO ADVERTISE

REVISIONS		
#	DATE	DESCRIPTION



PROJECT TEAM

Architecture and Interior Design:
EOP Architects
Prime Architect
201 W. Short Street, Suite 700
Lexington, KY 40507
Voice: 859-231-7538 / Fax: 859-255-4380
www.eopa.com

M/E/P/T Design:
CMTA
220 Lexington Green Circle, Suite 600
Lexington, KY 40503
Voice: 859.253.0892
www.cmta.com

Structural Design:
Yeiser Structural
403 Marquis Avenue
Lexington, KY 40502
Voice: 859.797.5566
www.yeiserstructural.com

Civil and Site Design:
Element
366 South Broadway
Lexington KY, 40508
Voice: 859.389.6533
www.element-site.com

Senior Center Design Consultant:
Lifespan Design Studio
554 Baxter Road
Loveland, OH 45140
Voice: 513.444.4877
www.lifespandesignstudio.com

All designs, arrangements and plans indicated or represented by this drawing are the property of EOP Architects and were created and developed for use on and in connection with the specified project.

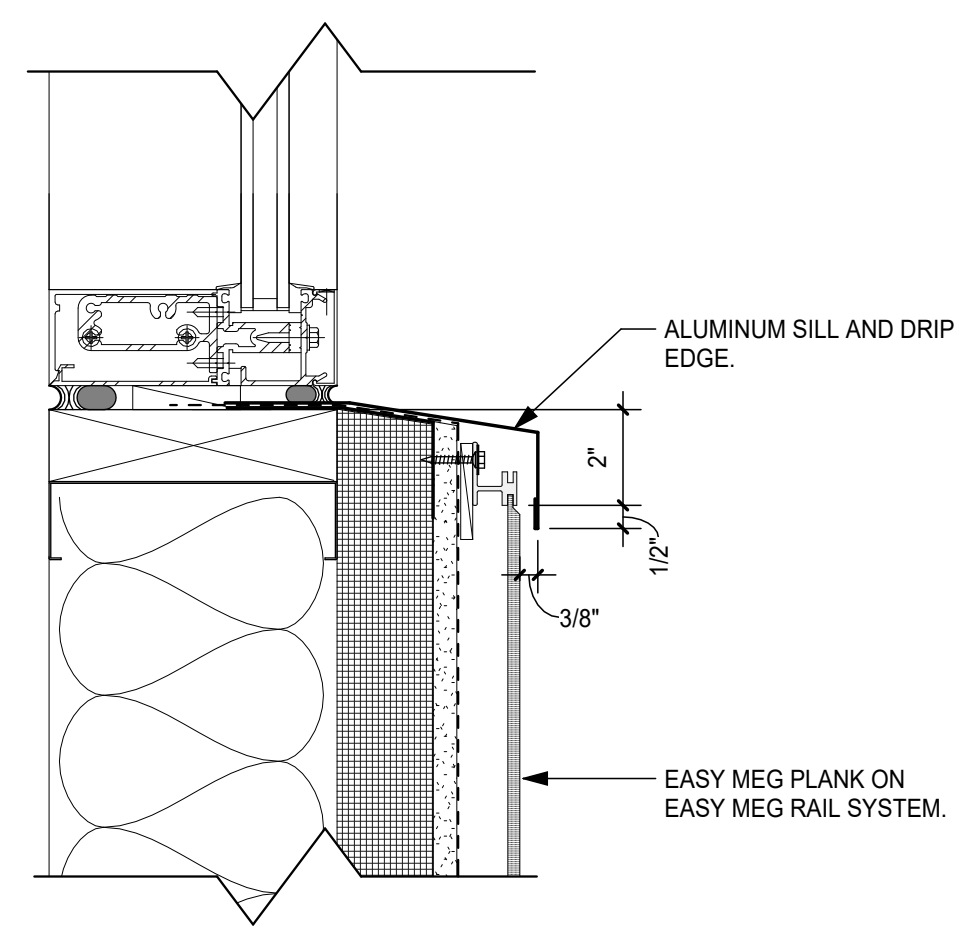
None of this information shall be used by or disclosed to any person or entity for any reason whatsoever without the permission of EOP Architects.

Written dimensions shall have precedence over scale dimensions. Contractor shall verify and be responsible for all dimensions and conditions on the job. Notify EOP Architects immediately of any variation from the dimensions and conditions shown by these drawings.

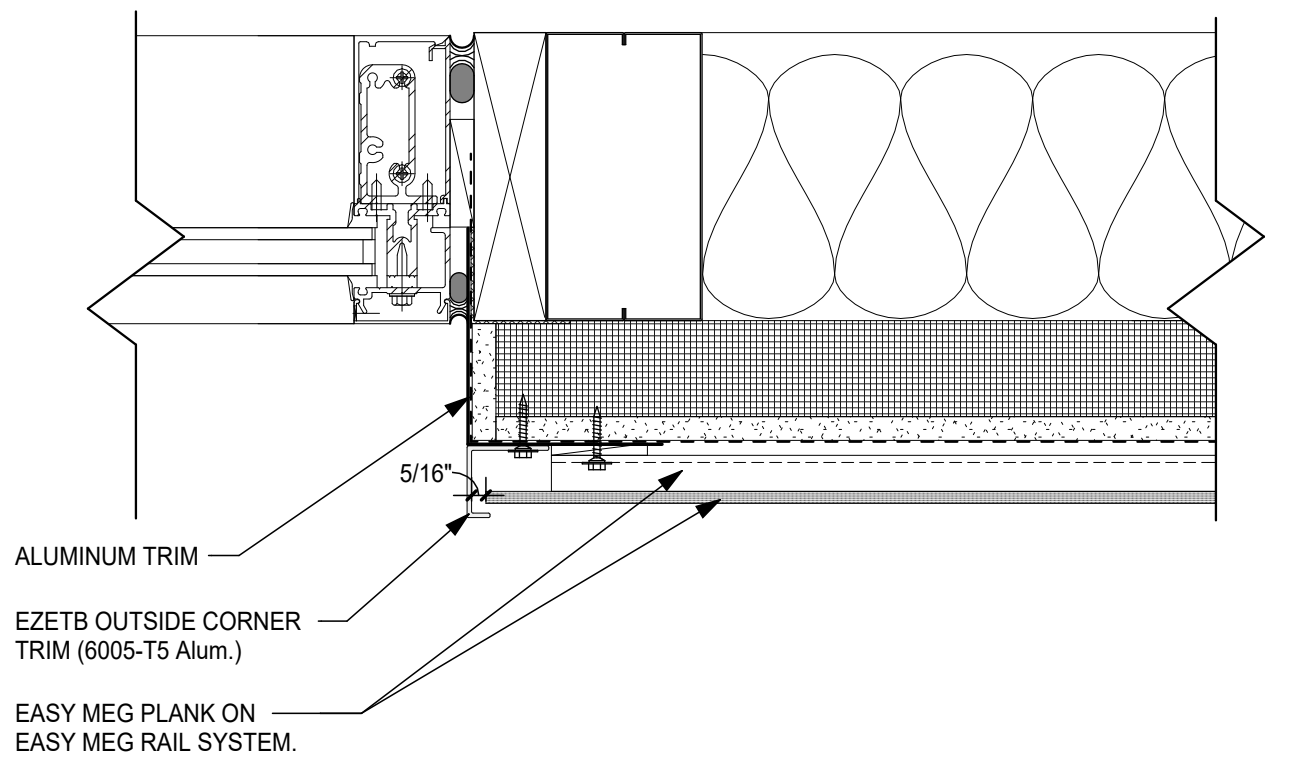
Job Number 903-8917 PLAN
Drawn By GAM
Checked By GAM
Date 4/22/2026

REVISED DETAILS FOR
PHENOLIC PANEL
RAINSCREEN SYSTEM

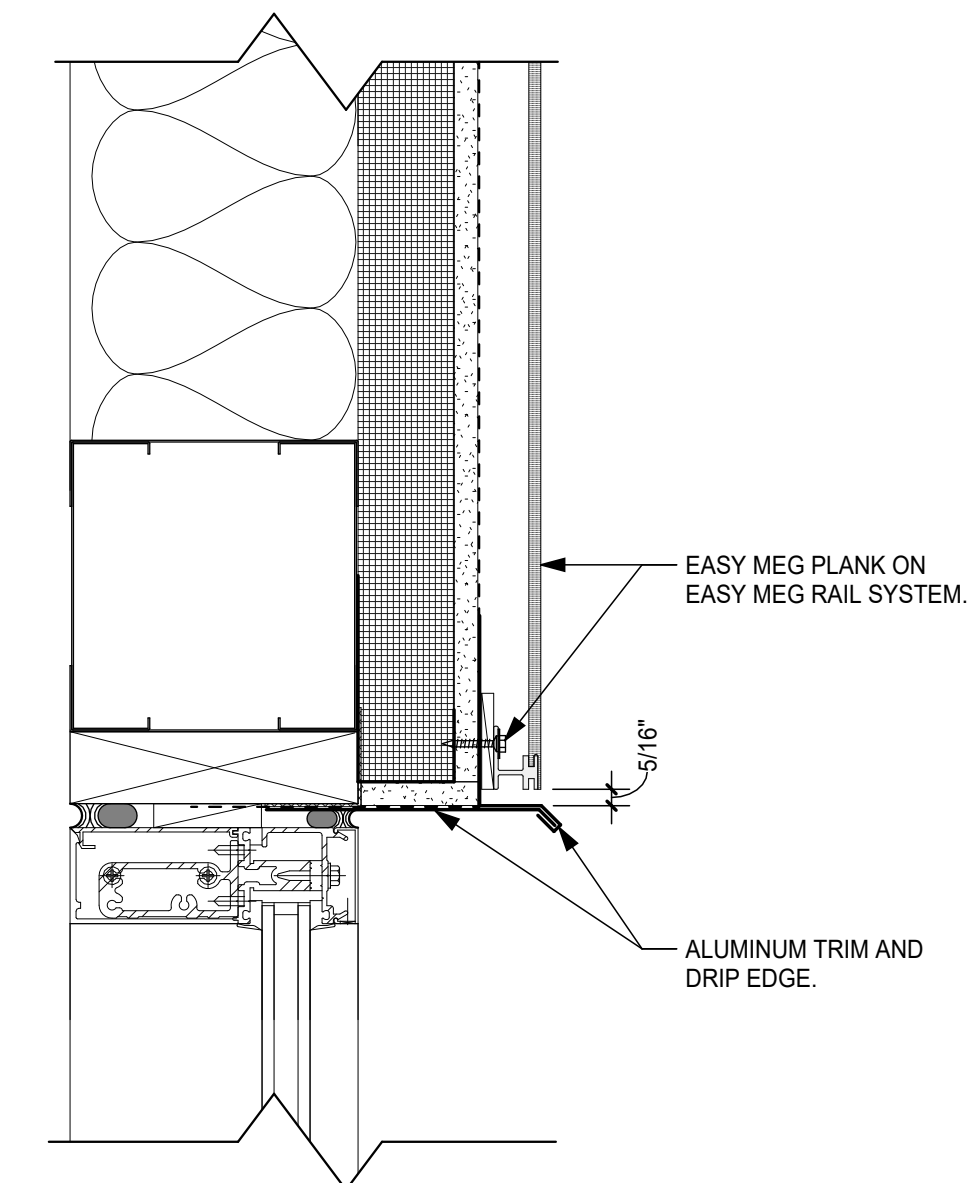
ASK-21



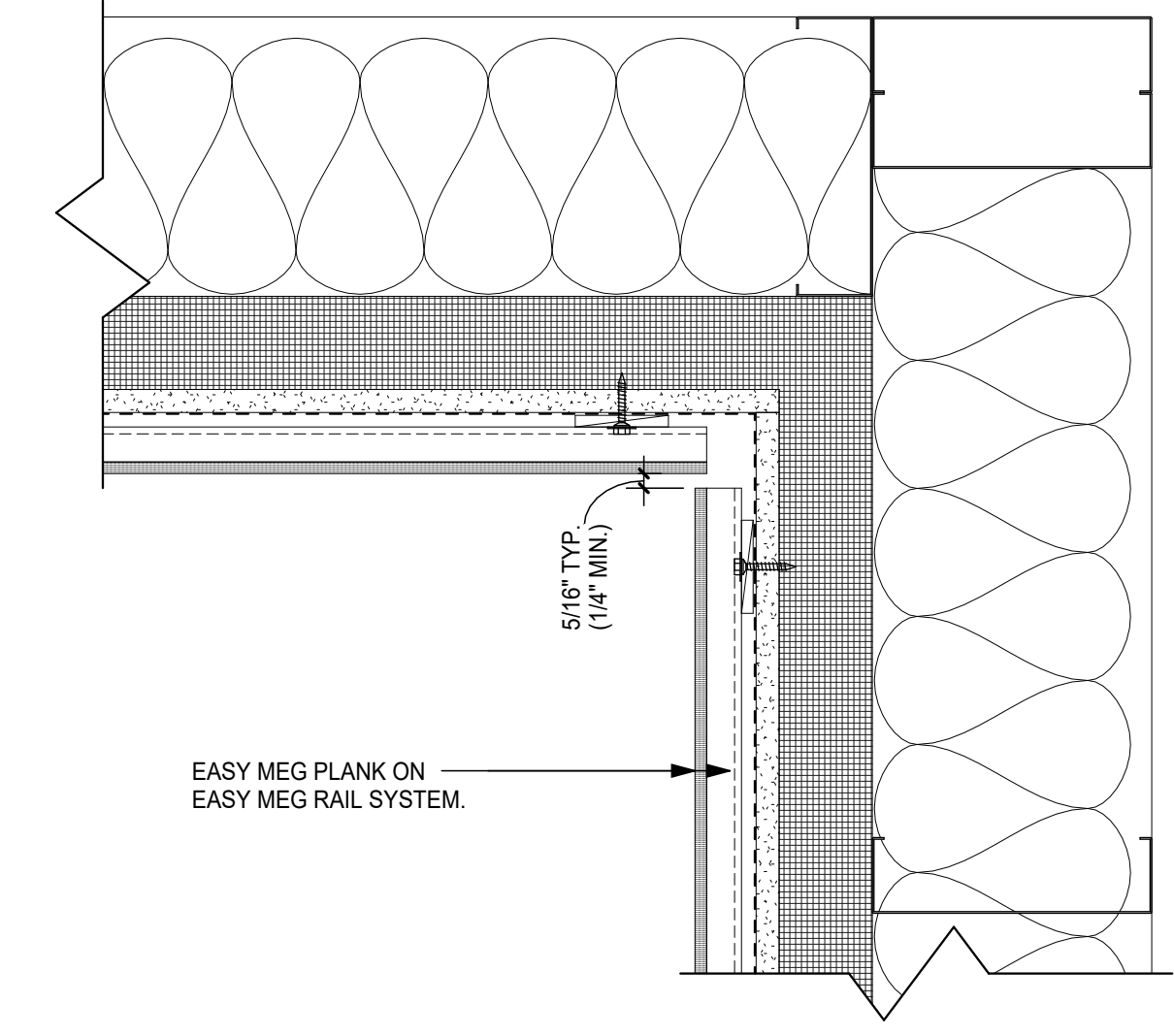
5 EASY MEG - TYP. OPENING SILL
ASK-21 SCALE: 3" = 1'-0"



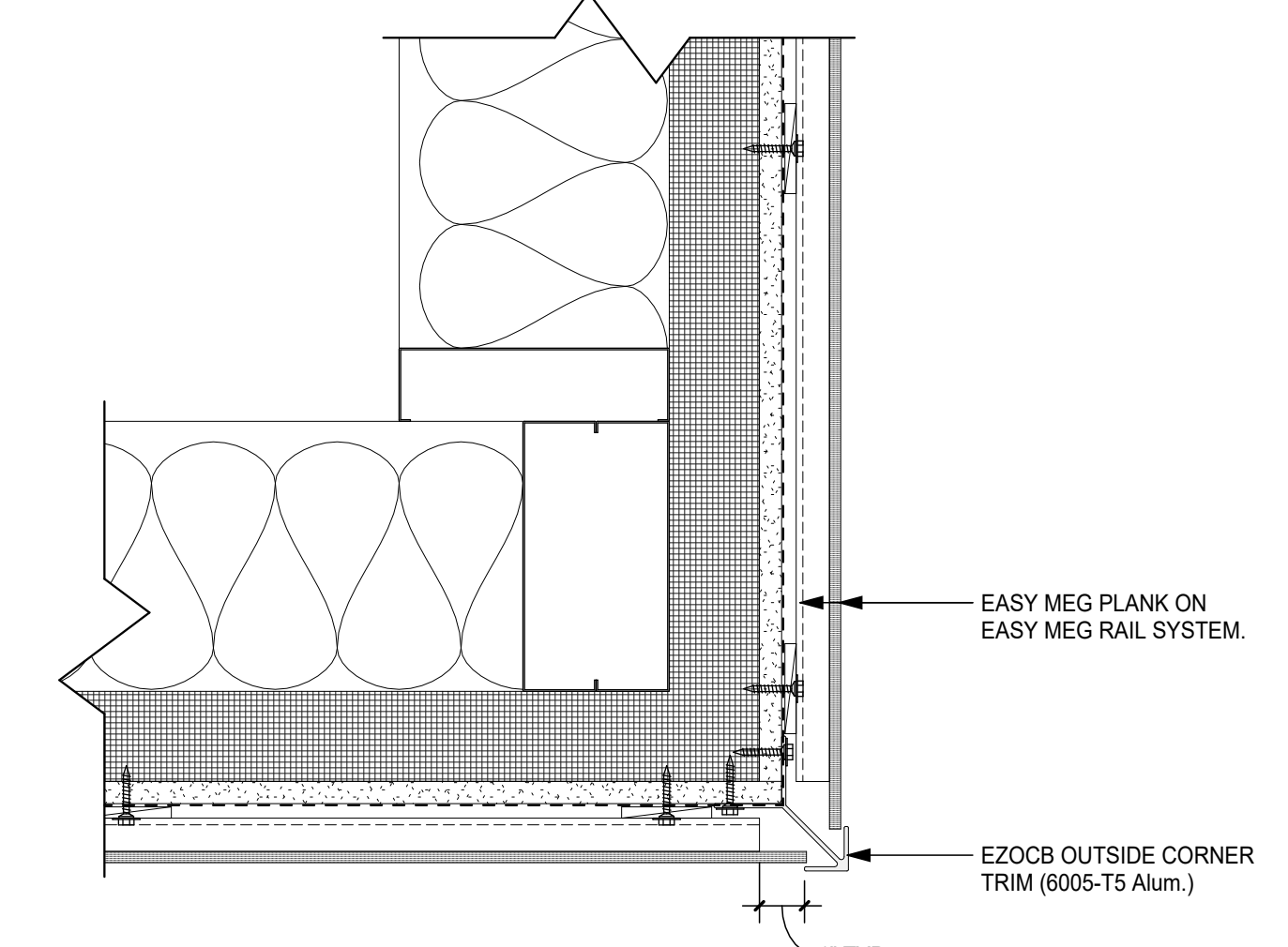
4 EASY MEG - TYP. OPENING JAMB
ASK-21 SCALE: 3" = 1'-0"



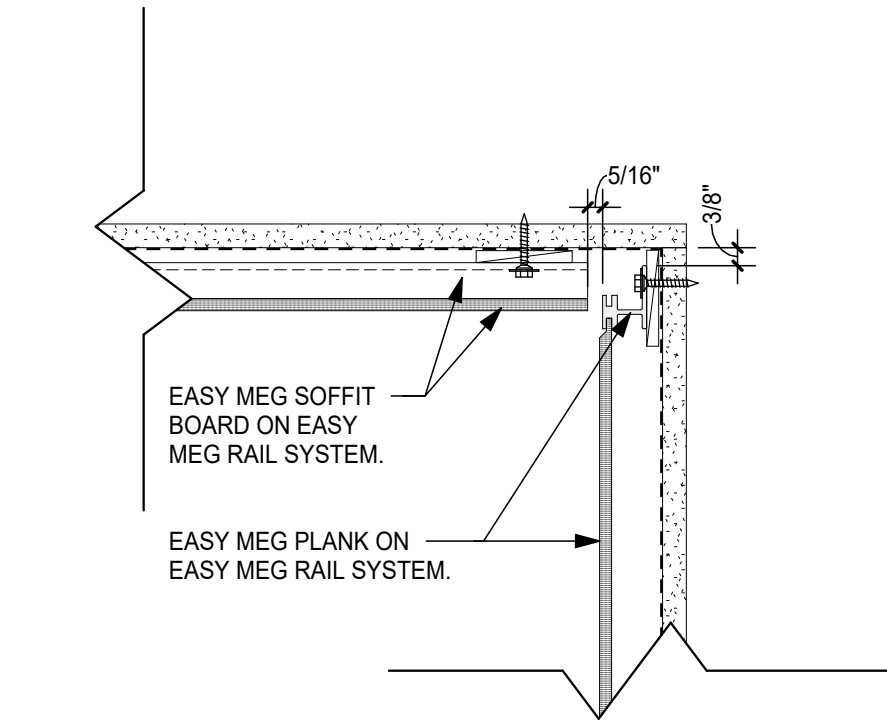
3 EASY MEG - TYP. OPENING HEAD
ASK-21 SCALE: 3" = 1'-0"



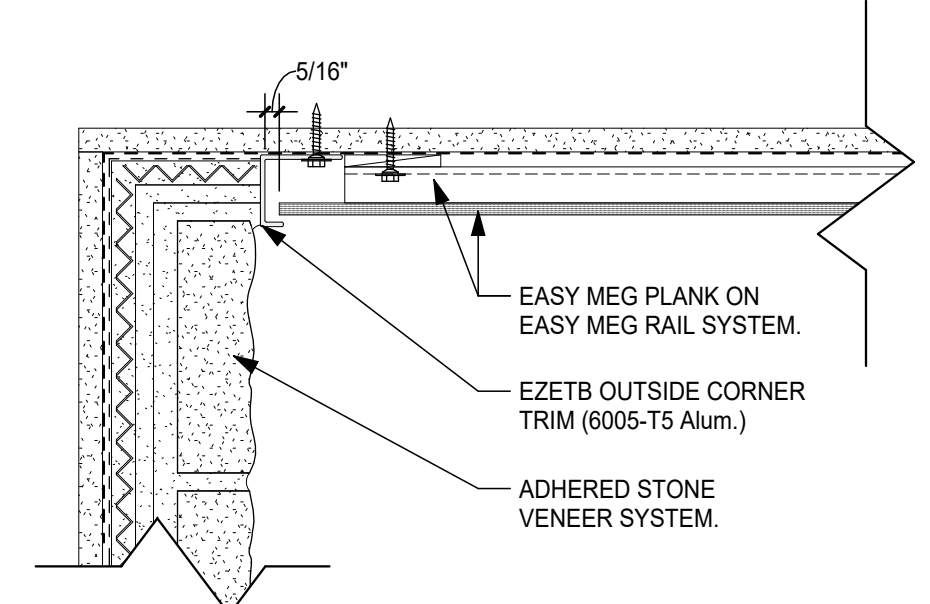
2 EASY MEG - TYP. INSIDE CORNER
ASK-21 SCALE: 3" = 1'-0"



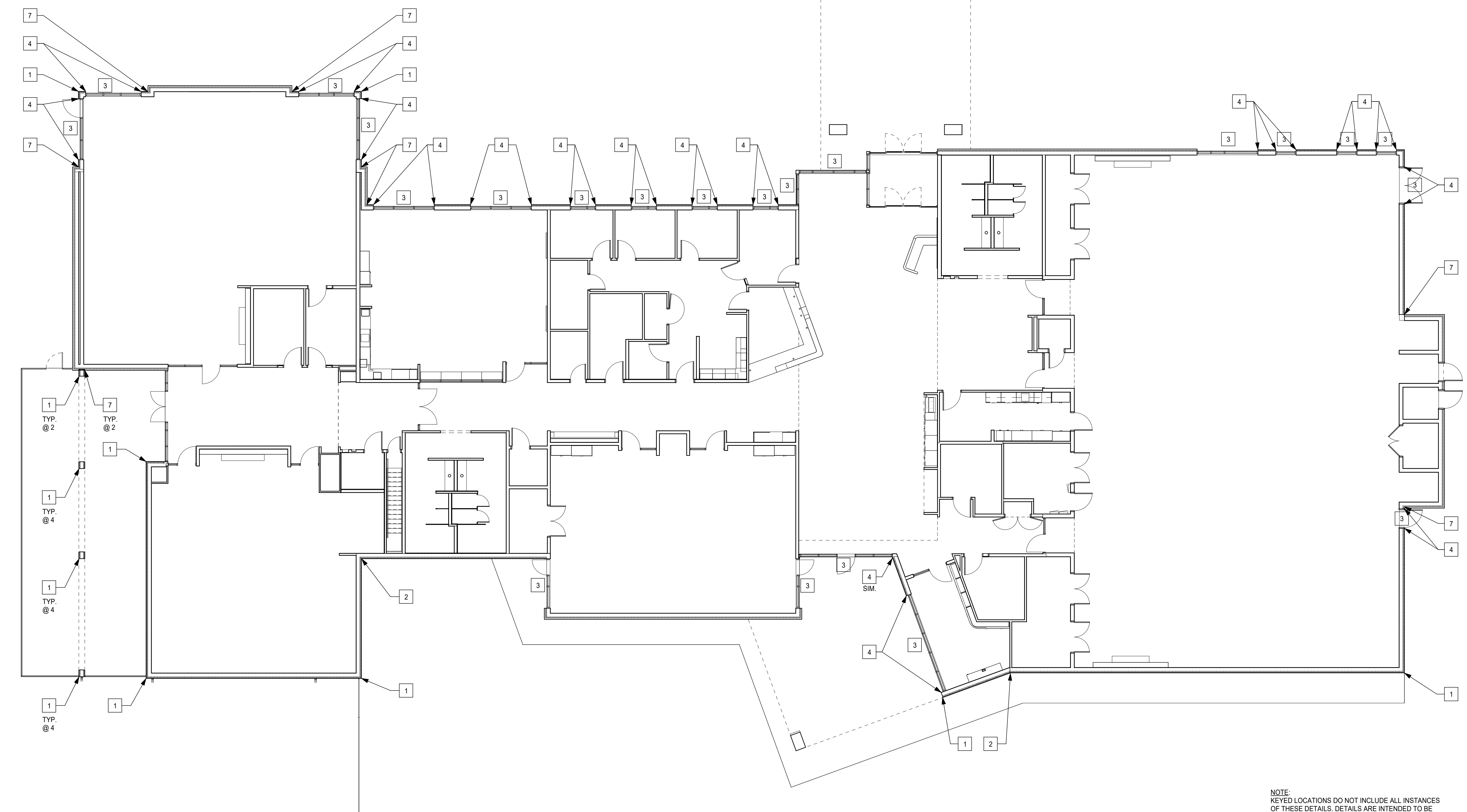
1 EASY MEG - TYP. OUTSIDE CORNER
ASK-21 SCALE: 3" = 1'-0"



6 EASY MEG - TYP. SOFFIT-WALL DET.
ASK-21 SCALE: 3" = 1'-0"



7 EASY MEG-STONE VENEER JOINT
ASK-21 SCALE: 3" = 1'-0"



8 FIRST FLOOR LIFE SAFETY PLAN
ASK-21 SCALE: 3/32" = 1'-0"

NOTE:
KEYED LOCATIONS DO NOT INCLUDE ALL INSTANCES
OF THESE DETAILS. DETAILS ARE INTENDED TO BE
TYPICAL AT ALL INSTANCES WHERE CONDITIONS EXIST.



PR-18 Wall panel corner trims break out

Material \$29,292.00

Labor \$8,372.00

Total \$37,664.00

This will also add 6 weeks to our duration

Change Order Request 22 - PCO #46 - PR-19 - ASI-08 Rec Room Ceiling Height Changes

768-- LFUCG Senior and Therapeutic Center



5/4/2026 8:06:01 PM

Summary of work

Scope - Subcontractor	Description	Cost
		\$17,053.00

- o Drywall - Magna ==> ==> \$8,309.00
- o Folding Partitions - Open Spaces ==> ==> \$6,900.00
- o Water-Based Fire Suppression Systems - Brown Sprinkler ==> ==> \$1,844.00

Sub Total:	\$17,053.00
Mark Up:	\$2,557.95
Negotiated Project:	\$0.00
Total	\$19,610.95

Approved By:

Date:

Submitted By: Calhoun

Date:



Rtqr qugf 'Ej cpi g'Qtf gt'T gs wguv

Project:

Proposed Change Request No:

Date:

To:

Description of Change/Add: Kwik-Wall Operable Partition(s):

Contract Amount:

Additional Material Cost:

Additonal Labor Cost:

15% Overhead/ Profit Mark-up:

Revised Contract Amount:

OPEN SPACES LLC
Mike Dunlop, PM
miked@openspacesgroup.com
502.822.252



301 Blue Sky Parkway - Lexington, Kentucky 40509
Phone: (859) 233-1283 / Fax: (859) 254-6644
www.brownsprinkler.com
Email: mattpoole@BrownSprinkler.com

April 15, 2026

Calhoun Construction Services
Attn: Daniel Valentine
Email: danielvalentine@calhounconstructs.com

RE: LFUCG – New Senior & Therapeutic
Center – ASI-08
Lexington, KY
Fire Protection

Dear Sir:

We are pleased to quote you the following Change-in-Contract price of **One Thousand Eight Hundred Forty-Four Dollars and Zero Cents (\$1,844.00)** for the change in scope at the above location. Our price includes all taxes, material, labor, and design per plans.

Scope of Work

1. Replace installed 48"-long flexible sprinkler drops to new 72"-long flexible sprinkler drop
 - a. Change is necessary for new lower ceiling
2. Update FP Drawings as required

Not Included In Our Scope

1. Any required sprinkler modification outside of the scope listed above

We look forward to working with you on the above project. If you have any questions, please feel free to contact the undersigned in our Lexington office at your earliest convenience.

Sincerely

A handwritten signature in black ink, appearing to read "Matt Poole", is written over a light gray rectangular background.

Matt Poole
Division Manager

Change Order Request 24 - PCO #48 - PR-20 Site Furniture & Site Monument Sign

768-- LFUCG Senior and Therapeutic Center

6/4/2026 2:58:55 PM



Summary of work

Scope - Subcontractor	Description	Cost
	Premier Polysteel will have a 7% price increase and the deadline for approval is 5/22/26.	\$6,744.74
o Concrete Footers/Foundations/Slabs - Elevated ==>	Core-drill and install direct bury swing (south patio) ==>	\$1,070.38
o Site Furnishings ==>	Add (1) Landscape Forms Parc Vue litter trash recept and (1) Parc Vue litter recycle recept. Freight and taxes included. Add (1) Premier Polysteel 32 gal. round direct bury trash receptacle with liner and direct bury kit and (1) Premier Polysteel 6' Grand Contour welded rod direct bury swing. Freight and taxes included.	
	Price increase deadline for Premier Polysteel items is 5.22.26. Approval for this PR needed by 5.20.26 in order for Calhoun to issue PO to vendor and secure current pricing. ==>	\$5,674.36
	Delete site sign 4	(\$3,674.19)

o Exterior Sign - Instant Signs ==> Delete site monument sign 4 ==> (\$3,674.19)

Sub Total:	\$3,070.55
Mark Up:	\$674.47
Negotiated Project:	\$0.00
Total	\$3,745.02

Approved By:

Submitted By: Calhoun

Date:

Date:

Proposal



PR-20

Prepared by:
Bluegrass Recreation Sales
and Installation, LLC
434 Quirks Run Rd
Danville KY 40422
PH: 800-257-5993
FX: 502-585-5265

Proposal number:

05.06.2026

031025AR

This proposal is valid for 30 days

Proposal prepared for:

Terms:

Calhoun Construction Services, Dennis Johnson
LFUCG, Senior and Therapeutic Center Site Amenities
1708 Jaggie Fox Way
Lexington, KY 40511
[\(859\)585-8773- cell](tel:8595858773) dennisjohnson@calhounconstructs.com

net 30

Products and Services:	Unit Price:	Qty.:	Ext. Price:
6' Grand Contour Expanded Metal IG with Back	\$1,304.00	10	\$13,040.00
32 Gallon Expanded Metal 1-Piece Round Receptacle (liner included)	\$388.00	5	\$1,940.00
Dome Lid	\$165.00	5	\$825.00
Direct Bury Receptacle Kit	\$63.00	5	\$315.00
6' Grand Contour Welded Rod Direct Bury Swing	\$1,742.00	1	\$1,742.00
<div style="border: 1px solid black; background-color: yellow; padding: 5px;"> <p>PR-20 Changes (Added Cost)</p> <p>1. (1) receptacle @ \$388 + dome lid \$165 + direct bury kit \$63 = \$616 (material)</p> <p>2. (1) 6' direct bury swing @ \$1,742 (material)</p> <p>3. Sales Tax = 152.56</p> <p>4. Freight = \$164.00</p> <p>5. Total Added Cost = \$2,674.56</p> </div>			
KY Sales Tax	\$1,155.96	1	\$1,155.96
Freight	\$1,404.00	1	\$1,404.00
Total:			\$20,421.96

PR-20

Notes:

Impending Pricing Increase Deadline: 5/22/2026
Colors: TBD

Payment is due within 30 days after receipt of product. Past due amounts will incur finance charges.

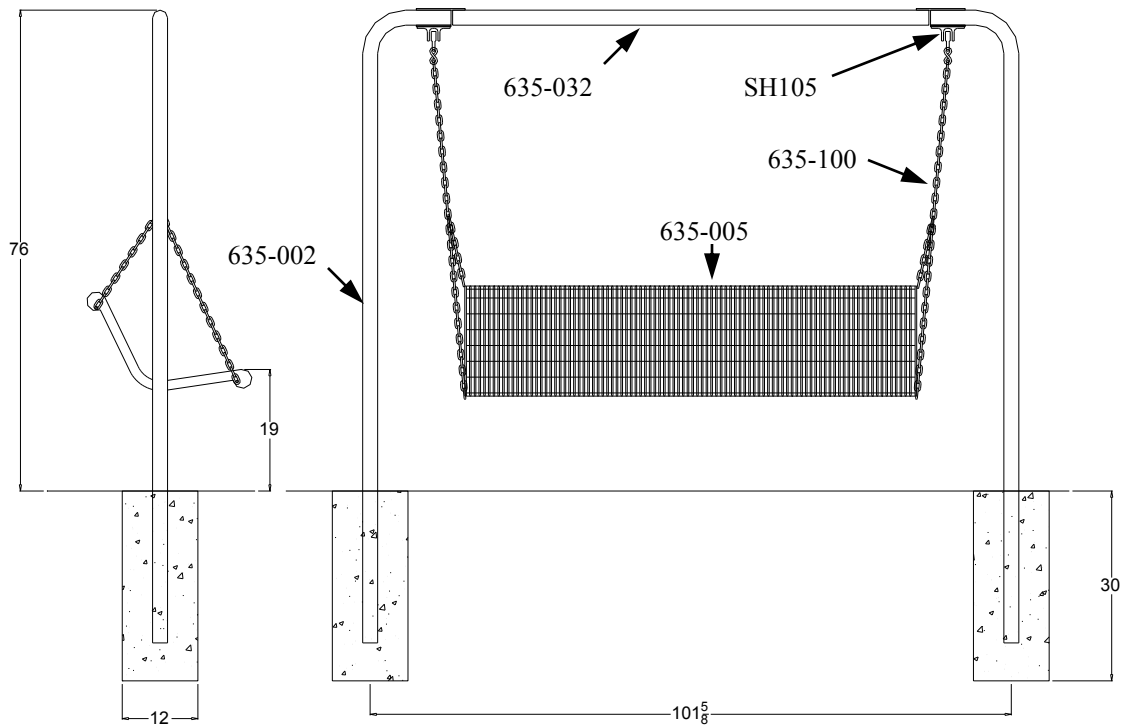
Representative Signature: Amy Riddle

Customer
Acceptance: _____
Date: _____

Installation charges assume no rock that cannot be reasonably removed with common hand tools. If heavy rock is encountered, additional charges may apply. Deposit may be required. Customer is responsible for security after Poured In Place Surfacing installation is complete.

3% credit card processing fee on the total if paying by credit card.

939-S12



Part No.	Description	Qty.
623-005	6' Grand Contour Seat	1
635-002	Contour Swing Post	2
635-032	6' Contour Swing Brace	1
635-100	Contour Swing Chain Harness	2
SH105	Beam Hanger	2
H-14	3/8" S-Hook	2
516-058	3/8"x1-1/2" SS Hex Bolt	4
516-028	3/8" SS Nylock Nut	4
516-023	3/8" SS Flat Washer	8
516-064	1/2"x4" SS Hex Bolt	4
516-036	1/2" SS Nylock Nut	4
516-027	1/2" SS Flat Washer	4

939-S12

- 1 Drill out the plastic from the holes in the swing posts and brace with a 1/2" dia. drill bit.
- 2 Fasten the brace and beam hangers to the posts as shown on page one using the 1/2" x 4" Hex bolts, nuts and washers.
- 3 Determine location of ground holes and auger out dirt as shown on page one.
- 4 Set the posts in the holes and support with bracing. Make sure that the posts are plumb before filling the holes with concrete.
- 5 Fill holes with concrete to about 2" below the normal ground height. We also suggest that you crown the top of the concrete so that water will run off it.
- 6 Let the concrete cure for several days before removing the bracing and attaching the bench.
- 7 Drill out the 4 holes at each end of the bench located in the circles at the front and top, using a 7/16" dia. drill bit. *Do not drill out the slots located along the straight edges between the circle ends.*
- 8 The chain harness has 3 different lengths of chain attached to it. The shortest length of chain attaches to the top of the bench back. The longest length of chain attaches to the front of the bench seat. The remaining chain attaches to the beam hanger. The Contour bench has a definite seat and back. The back has one support bar running from end to end and the seat has two.
- 9 Using the 3/8" x 1-1/2" bolts, nuts and washers fasten the ends of the short and long chain to the end of the bench as instructed in line 8.
- 10 Attach the end of the remaining length of chain to the beam hanger using the S-Hooks. You can shorten the chain if you want the bench to be higher off the ground. Be sure to close the S-Hooks completely.

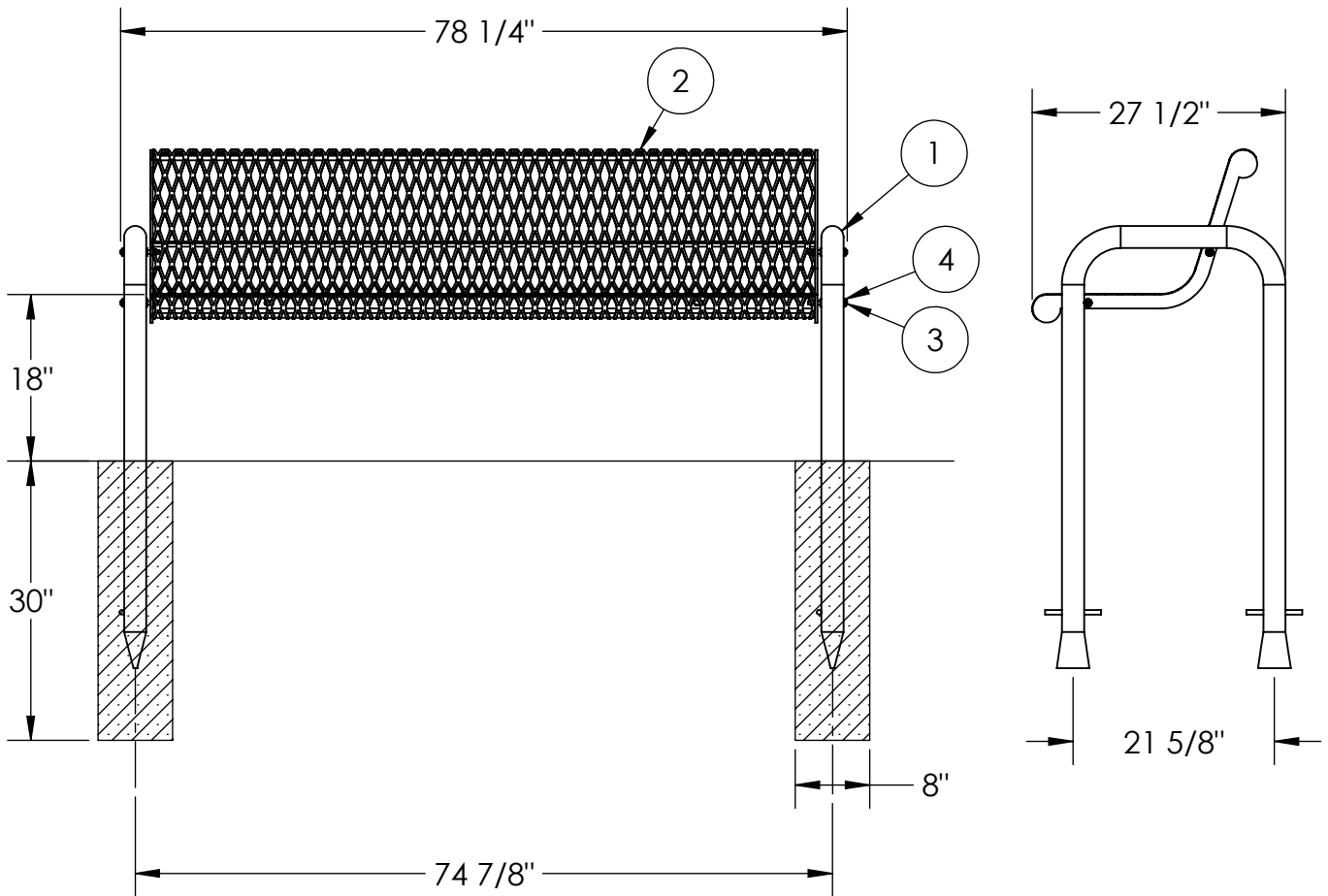
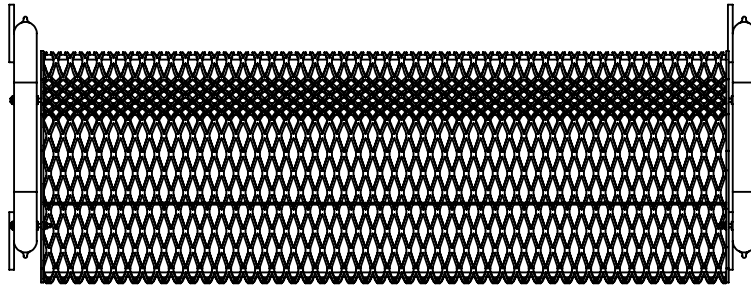
In Accordance to California law: WARNING This product contains a chemical known to the State of California to cause cancer and birth defects or other reproductive harm.

Periodic check of bolt tightness recommended.



6' Expanded Grand Contour With Back Direct Bury

974-302



ITEM NO.	PART NUMBER	DESCRIPTION	QTY.
1	733-212	Grand Contour Tube Frame DB	2
2	623-015	6' GC Expanded Bench with Back	1
3	516-033	3/8"x4" SS Button Head Cap Screw	4
4	516-023	3/8" SS Flat Washer	8
5	516-028	3/8" SS Nylock Nut	4

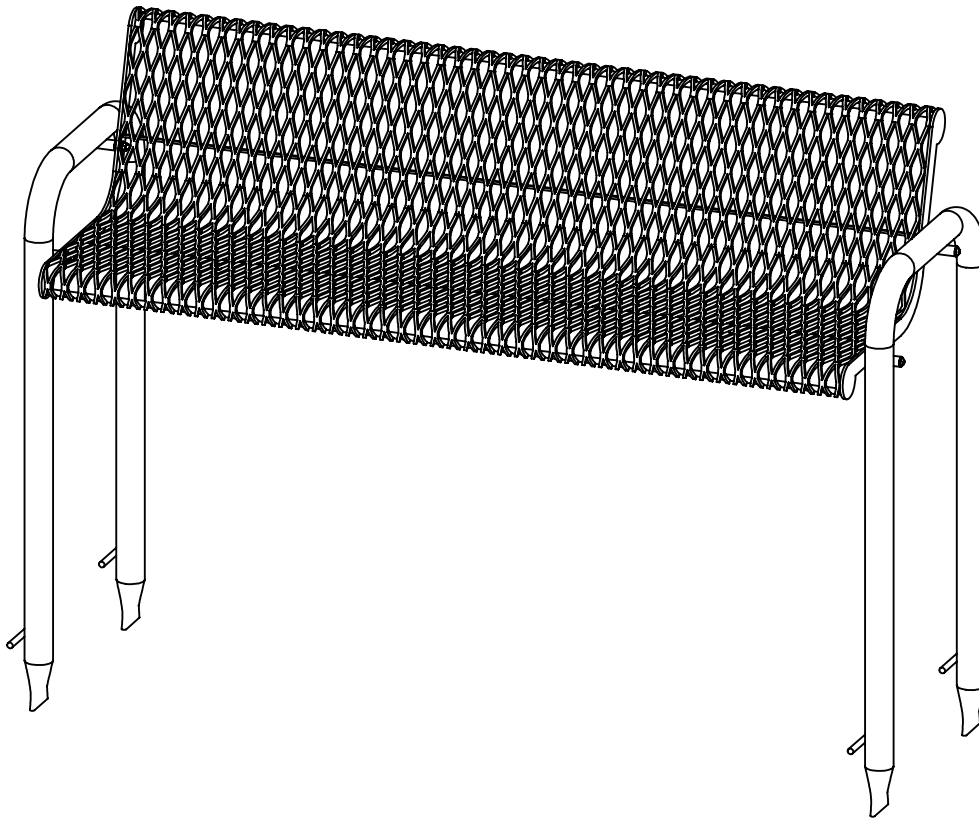


PREMIER POLYSTEEL

The Best Commercial Outdoor Furniture Available. Period.



SIZE
A



1. Drill plastic out of the mounting holes on the seat using a 7/16" diameter drill bit.
2. Bolt the seat to the legs and tighten up.
3. Mark out the holes for the legs on the ground in the desired location. Drill 8" diameter holes at each location to a minimum depth of 30". You need to be below the frost line in your area.
4. Place the seat into the holes and support at the desired height. Level the top of the stands side to side and front to back.
5. Fill the holes with concrete and crown the top so that water will run off. Let stand for 24 hours before removing the supports.

Tools List

- 7/16" Drill bit
- 9/16" Socket
- 9/16" Wrench
- 7/32" Hex Key/Allen Wrench
- Level
- Impact Gun (Optional)
- Drill

This product uses Hardware Pack HWPCK09
(you may receive extra hardware)

- 4 qty. 3/8" x 4" SS BSCS
- 4 qty. 3/8" SS Nylock Nut
- 8 qty. 3/8" SS Flat Washer

In Accordance with California law: WARNING This product contains a chemical known to the State of California to cause cancer and birth defects or other reproductive harm.



PREMIER POLYSTEEL

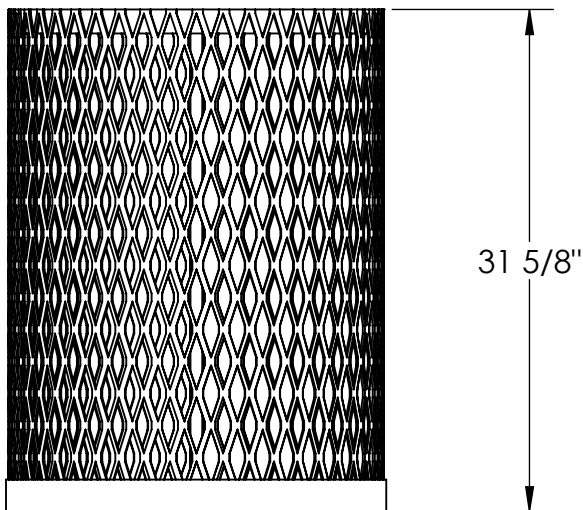
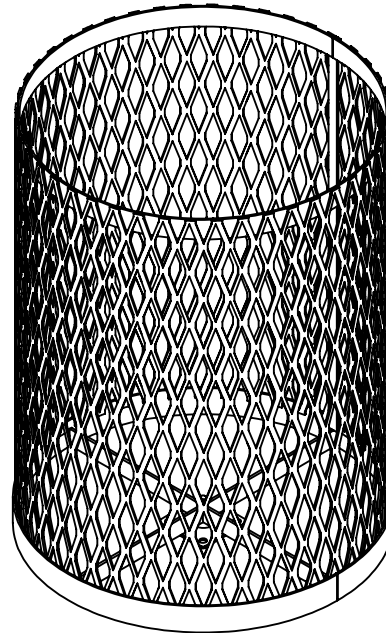
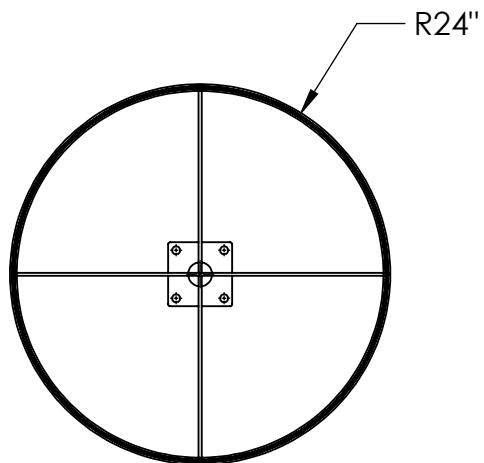
The Best Commercial Outdoor Furniture Available. Period.





32 Gallon Expanded Metal 1-Piece Round Receptacle (liner included)

995-131

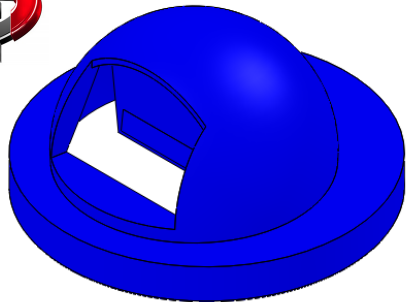


PREMIER POLYSTEEL

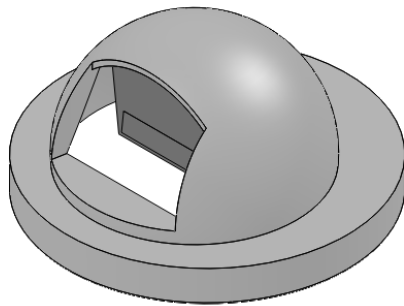
The Best Commercial Outdoor Furniture Available. Period.



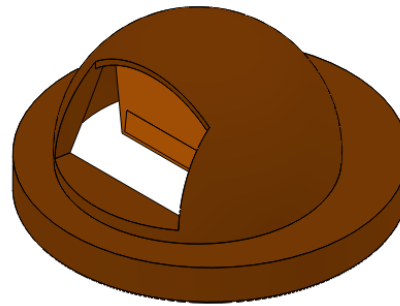
SIZE
A



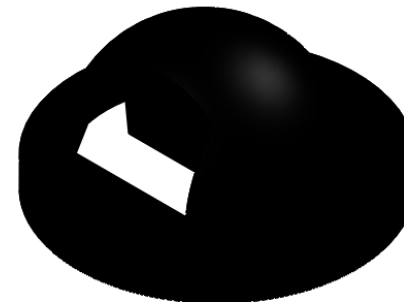
Blue



Gray

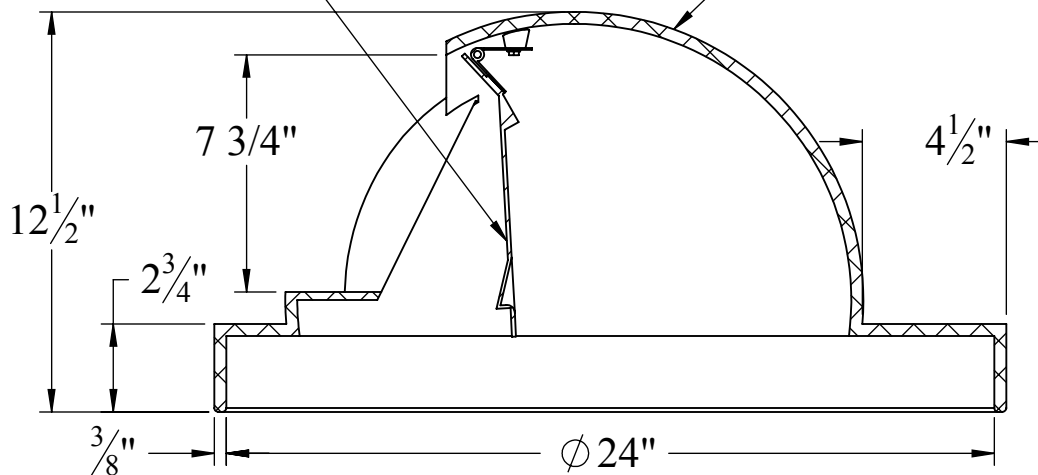
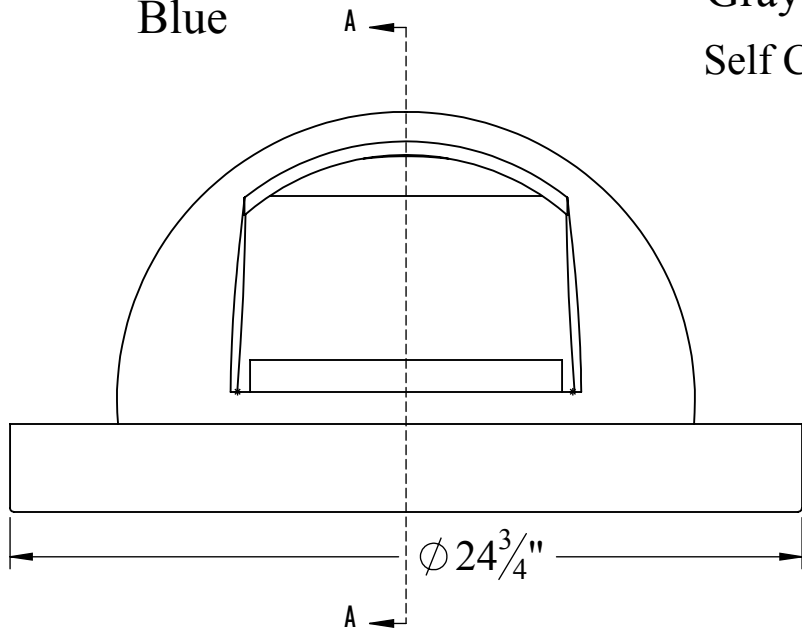


Brown

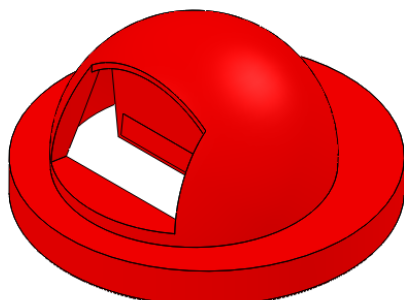


Black

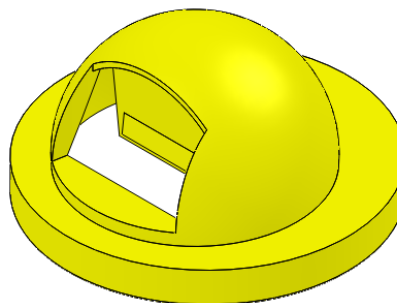
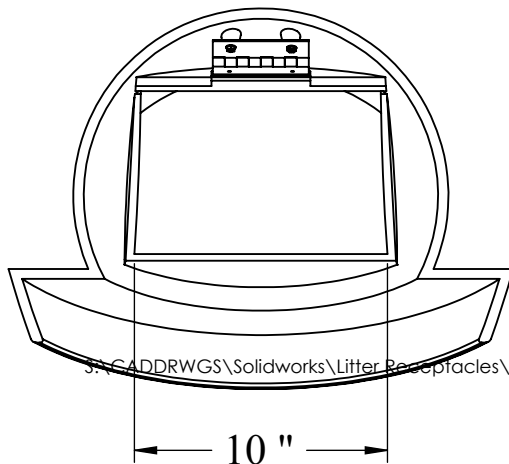
Self Closing Push Door Heavy Molded Plastic



SECTION A-A
SCALE 1 : 6



Red



Yellow

Path to Part or Assy - DLMP3255

S:\CADD\RWGS\Solidworks\Litter Receptacles\DLM\

CONFIDENTIAL DRAWING AND INFORMATION IS NOT TO BE COPIED OR DISCLOSED TO OTHERS WITHOUT THE CONSENT OF KAY PARK. SPECIFICATIONS ARE SUBJECT TO CHANGE WITHOUT NOTICE.

DATE DA 2/28/2013 Sheet 1 of 3
DESC. 24" ID PLASTIC DOMED LID, FITS INSIDE 132LR w/SLATS, OVER 132LRVP & RLR2132

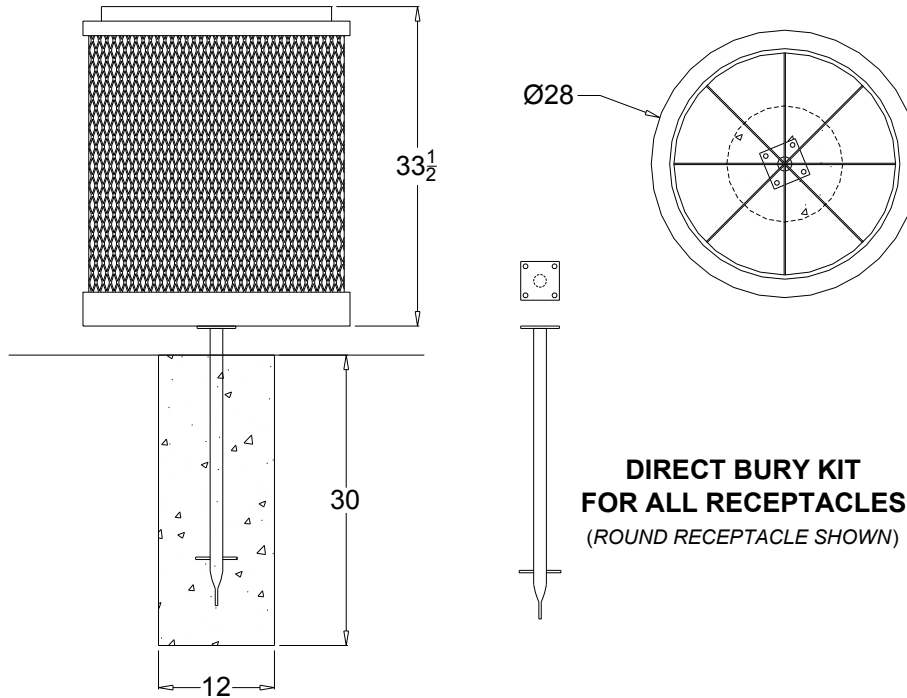
MODEL NUMBER. DLMP3255

WT.

DRAWN BY

SCALE NONE

99DBKIT



Part No.	Description	Qty.
653-072	Direct Bury Post	1
516-058	3/8"x1-1/2" Hex Head Bolt	4
516-028	3/8" SS Nylock Nut	4
516-023	3/8" SS Flat Washer	8

Assembly Instructions

- 1 With a post hole auger drill a hole in the ground 30" deep in the desired location.
- 2 Drill out the holes in the mounting plate of the post with a 7/16" dia. drill bit. Also drill out the holes in the mounting plate of the garbage receptacle base.
- 3 Place the direct bury post into the center of the ground hole and support it in place. Make sure that the top of the post is level. If the top mounting plate is not level, the receptacle will not stand straight. The base of the receptacle can be installed to the post prior to securing the post in the ground hole. If the base is installed to the post you may have to clean concrete from the base after filling the hole. (*Note: The distance between the ground and the bottom of the receptacle is your choice. You need to leave enough room to install the fasteners.*)
- 4 Fill the hole with concrete after the post is leveled. We suggest that you fill the hole slightly higher than ground level and crown the top of the concrete so that water doesn't pool under the receptacle.
- 5 After the concrete has set you can continue with the receptacle installation.

In Accordance to California law: WARNING This product contains a chemical known to the State of California to cause cancer and birth defects or other reproductive harm.

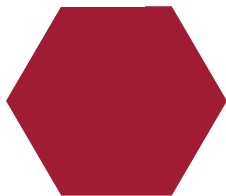
Periodic check of bolt tightness recommended.



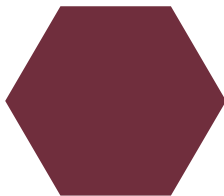
PREMIER POLYSTEEL

The Best Commercial Outdoor Furniture Available. Period.

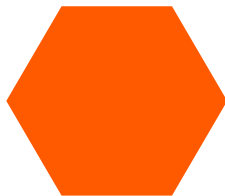
Standard Colors



Red



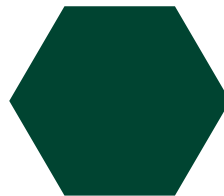
Burgundy



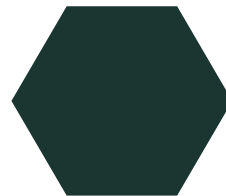
Orange



Yellow



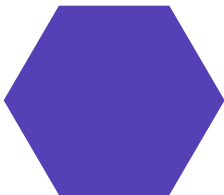
Hunter Green



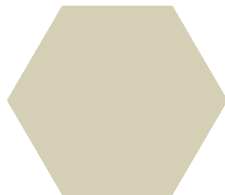
Evergreen



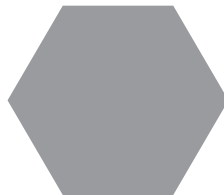
Blue



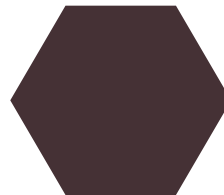
Purple



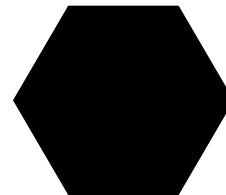
Ivory



Gray



Brown



Black

Actual product colors may vary from colors shown on your monitor. Color samples are available upon request. [Click here to contact us.](#)



Contact Us Today!

Phone: 641-324-2750 • Toll Free: 877-746-3826 (US & CAN)

Email: sales@premierpolysteel.com • Web: www.premierpolysteel.com



Proposal



ORIGINAL

Prepared by:

Bluegrass Recreation Sales
and Installation, LLC
434 Quirks Run Rd
Danville KY 40422
PH: 800-257-5993
FX: 502-585-5265

Proposal number:

031025AR

02.24.2026

This proposal is valid for 30 days

Terms:

net 30

Proposal prepared for:

Calhoun Construction Services, Dennis Johnson
LFUCG, Senior and Therapeutic Center Site Amenities
1708 Jaggie Fox Way
Lexington, KY 40511
[\(859\)585-8773](tel:8595858773)- cell dennisjohnson@calhounconstructs.com

Products and Services:	Unit Price:	Qty.:	Ext. Price:
6' Grand Contour Expanded Metal IG with Back	\$1,304.00	10	\$13,040.00
32 Gallon Expanded Metal 1-Piece Round Receptacle (liner included)	\$388.00	4	\$1,552.00
Dome Lid	\$165.00	4	\$660.00
Direct Bury Receptacle Kit	\$63.00	4	\$252.00
KY Sales Tax	\$1,004.64	1	\$1,004.64
Freight	\$1,240.00	1	\$1,240.00
Total:			\$17,748.64

Notes:

	Payment is due within 30 days after receipt of product. Past due amounts will incur finance charges.
--	--

Representative Signature: Amy Riddle

Customer

Acceptance: _____

Date: _____

Installation charges assume no rock that cannot be reasonably removed with common hand tools. If heavy rock is encountered, additional charges may apply. Deposit may be required. Customer is responsible for security after Poured In Place Surfacing installation is complete.

3% credit card processing fee on the total if paying by credit card.

Quote

PR-20

Date: 05/05/2026
LF Quote#: 0000465546
PO#:

Project: Lexington-Fayette Urban County Government Senior and Therapeutic Center

Bill To: Bidders Quote - Alex Filiputti
ATTN:
TBA
Kalamazoo

Amie Bergman
800.441.1945 x 4489

CORPORATE
7800 E. Michigan Avenue
Kalamazoo, MI 49048-9543
P: 800.521.2546 F: 269.381.3455
www.landscapeforms.com
Federal I.D.# 38-1897577
FSC# PBN-COC-001261

Ship To: Bidders Quote - Alex Filiputti
ATTN:
3360 Shilito Park Road
Lexington, KY 40503

Ship To Contact Phone:
Ship Via: Common Carrier
F.O.B.: Destination

Qty	Description	Unit Price	Total Price
-----	-------------	------------	-------------

When ordering please confirm:

- Shipping address and contact information (name and ph#)
- Billing address and contact information
- Is your firm or the project tax exempt? If so, exemption certificate must accompany order
- Delivery schedule:

___ Ship immediately upon completion
OR Ship On/After the date: _____

3	Parc Vue Bench Length: <i>72" length</i> Style: <i>Backed</i> Mounting: <i>Surface Mount</i> Arm Divider Option: <i>End Arms</i> Powdercoat Color: <i>To Be Advised</i>	\$ 2,250.00	\$ 6,750.00
3	Loop Bike Rack Mounting: <i>Embedded</i> Finish: <i>Powdercoated</i> Options: <i>No Options</i> Powdercoat Color: <i>To Be Advised</i>	\$ 580.00	\$ 1,740.00
1	Parc Vue Litter Style: <i>Side Opening</i> Liner Option: <i>With Liner</i> Lid Color: <i>To Be Advised</i> Powdercoat Color: <i>To Be Advised</i>	\$ 1,200.00	\$ 1,200.00

Cust #: LFBID
SSR: Annah Moore
Rep: Annah Moore, TN1

Landscape Forms Customer Service

Purchaser

Seller

Quote

Date: 05/05/2026
 LF Quote#: 0000465546
 PO#:

Project: Lexington-Fayette Urban County Government Senior and Therapeutic Center

Bill To: Bidders Quote - Alex Filiputti
 ATTN:
 TBA
 Kalamazoo

CORPORATE

7800 E. Michigan Avenue
 Kalamazoo, MI 49048-9543
 P: 800.521.2546 F: 269.381.3455
 www.landscapeforms.com
 Federal I.D.# 38-1897577
 FSC# PBN-COC-001261

Ship To: Bidders Quote - Alex Filiputti
 ATTN:
 3360 Shilito Park Road
 Lexington, KY 40503

Ship To Contact Phone:
 Ship Via: Common Carrier
 F.O.B.: Destination

Qty	Description	Unit Price	Total Price
1	Parc Vue Litter Style: <i>Side Opening Recycling *</i> Liner Option: <i>With Liner</i> Lid Color: <i>To Be Advised</i> Powdercoat Color: <i>To Be Advised</i> Sign Option: <i>To Be Advised</i> NOTE: <i>* Modified product subject to extended lead-times</i>	\$ 1,420.00	\$ 1,420.00

Item Total	\$ 11,110.00
Shipping & Handling	\$ 1,280.00
Sub Total	\$ 12,390.00
Estimated Tax	\$ 743.40
Document Total	\$ 13,133.40

PR-20 Added Cost = +2,999.80
Original 3.13.215 quote was 10,133.60

Payment Terms: Pending-Net30

Landscape Forms, Inc. reserves the right to change payment terms based on payment history as well as information obtained from commercial credit reporting agencies.

- Purchaser is responsible for confirming options, materials, quantities, etc., for completeness and conformity to plans and specifications.
- Changes to or cancellations of standard product orders may incur a penalty charge of 30% or more.
- Orders including modified or custom product (Specials and/or Studio 431) may not be cancelled. If an order is terminated by the customer, payment in full is expected for the product subtotal regardless of current project status.
- Orders including modified or custom product (Specials, Structure and/or Studio 431) are subject to price increase after engineering/product development is complete and approved by the customer. Modifications in price will be handled via change order.

Cust #: LFBID
 SSR: Annah Moore
 Rep: Annah Moore, TN1

Landscape Forms Customer Service

Purchaser

Seller

Quote

Date: 05/05/2026
LF Quote#: 0000465546
PO#:

Project: Lexington-Fayette Urban County Government Senior and Therapeutic Center

Bill To: Bidders Quote - Alex Filiputti
ATTN:
TBA
Kalamazoo

CORPORATE

7800 E. Michigan Avenue
Kalamazoo, MI 49048-9543
P: 800.521.2546 F: 269.381.3455
www.landscapeforms.com
Federal I.D.# 38-1897577
FSC# PBN-COC-001261

Ship To: Bidders Quote - Alex Filiputti
ATTN:
3360 Shilito Park Road
Lexington, KY 40503

Ship To Contact Phone:
Ship Via: Common Carrier
F.O.B.: Destination

- All manufacturing of product, as engineered and/or designed by Landscape Forms, shall be performed exclusively by Landscape Forms or its expressly authorized affiliates or subcontractors. Customer shall not engage any third party for the manufacture of said Product without the prior written consent of Landscape Forms.
- All orders that include a swing product must include an executed liability waiver to be accepted and entered into production.
- Only the Material Supplier Standard Limited Warranty shall apply to all product sold by Landscape Forms. No other warranties or changes to the standard warranty will be applied or accepted.
- No merchandise can be returned without authorization from Landscape Forms. Returns may be subject to a disposition fee of 30-100%.
- Prices based on quantities shown and quantity changes may affect price.
- QUOTED prices are held for 60 days. After receipt of a written ORDER, prices will be held for up to twelve months from receipt of the order. Changes in quantity or specification may affect pricing. Upfit and Scenic pricing will only be held for six months after receipt of a written order.
- Pricing includes selection from our standard color palette. Optional colors and custom color matches are available for an additional fee and will extend lead-time. Please contact our corporate office for more information.
- Fixtures for custom products are the property of Landscape Forms, Inc., and are not available for sale.
- Landscape Forms is a supplier only and ships via common carrier. Customer is responsible for offloading and installing unless otherwise indicated above.
- Handling fees alone will apply on third party and customer pick-up orders.
- Mounting hardware is only available on a limited number of products. Please consult the installation recommendations or contact our corporate office to confirm. In the event hardware is provided, it MUST be used for proper installation.
- Refer to Care and Maintenance guidelines for more detailed information and instructions.
- All orders ship upon completion of fabrication. A one-week grace period may be available, after which storage fees will apply.
- This Agreement contains the entire understanding between the parties. All prior communications are merged into this Agreement. The terms of this Agreement shall control any conflict between documents.
- This Agreement may be signed by the parties separately and by facsimile, and together they shall be deemed one binding, original Agreement.
- Purchaser shall pay all costs and expenses paid or incurred by Landscape Forms, Inc. in collecting any amounts due for goods purchased by Purchaser, including without limitation, reasonable attorneys' fees and collection costs. Balances on invoices not paid within 30 days of date of invoice, or within an alternate period of time as determined and indicated by Landscape Forms, shall incur interest at a rate of 18% per annum. Cash discounts are not offered.
- The quoted price may include estimated tax, duties and tariffs. Actual tax, duties and tariffs shall be purchaser's responsibility and may be added to an invoice as a separate and additional charge to purchaser unless an acceptable exemption certificate is presented.

Page: 3 of 4

Cust #: LFBID
SSR: Annah Moore
Rep: Annah Moore, TN1

Landscape Forms Customer Service

Purchaser

Seller

landscapeforms®

Quote

Date: 05/05/2026
LF Quote#: 0000465546
PO#:

Project: Lexington-Fayette Urban County Government Senior and
Therapeutic Center

Bill To: Bidders Quote - Alex Filiputti
ATTN:
TBA
Kalamazoo

CORPORATE

7800 E. Michigan Avenue
Kalamazoo, MI 49048-9543
P: 800.521.2546 F: 269.381.3455
www.landscapeforms.com
Federal I.D.# 38-1897577
FSC# PBN-COC-001261

Ship To: Bidders Quote - Alex Filiputti
ATTN:
3360 Shilito Park Road
Lexington, KY 40503

Ship To Contact Phone:
Ship Via: Common Carrier
F.O.B.: Destination

- To the extent purchaser supplies or modifies the standard specifications for any products, Landscape Forms, Inc. expressly disclaims all representations and warranties related to such products or their design whether express or implied except that the products shall be manufactured in accordance with purchaser's specifications.
- **REMITTANCE OPTIONS:** For information on paying via credit card, ACH, direct bank transfer, or wire please email us at AR@landscapeforms.com. Please note all credit card charges will be subject to a 3% surcharge. Mail payments to:

USD Checks

Landscape Forms, Inc.
Dept 78073
PO Box 78000
Detroit, MI 48278-0073
USA

CAD Cheques

Landscape Forms, Inc.
PO Box 2408
Station A
Toronto, Ontario M5W 2K6
CAN

Page: 4 of 4

Cust #: LFBID
SSR: Annah Moore
Rep: Annah Moore, TN1

Landscape Forms Customer Service

Purchaser

Seller

landscapeforms®

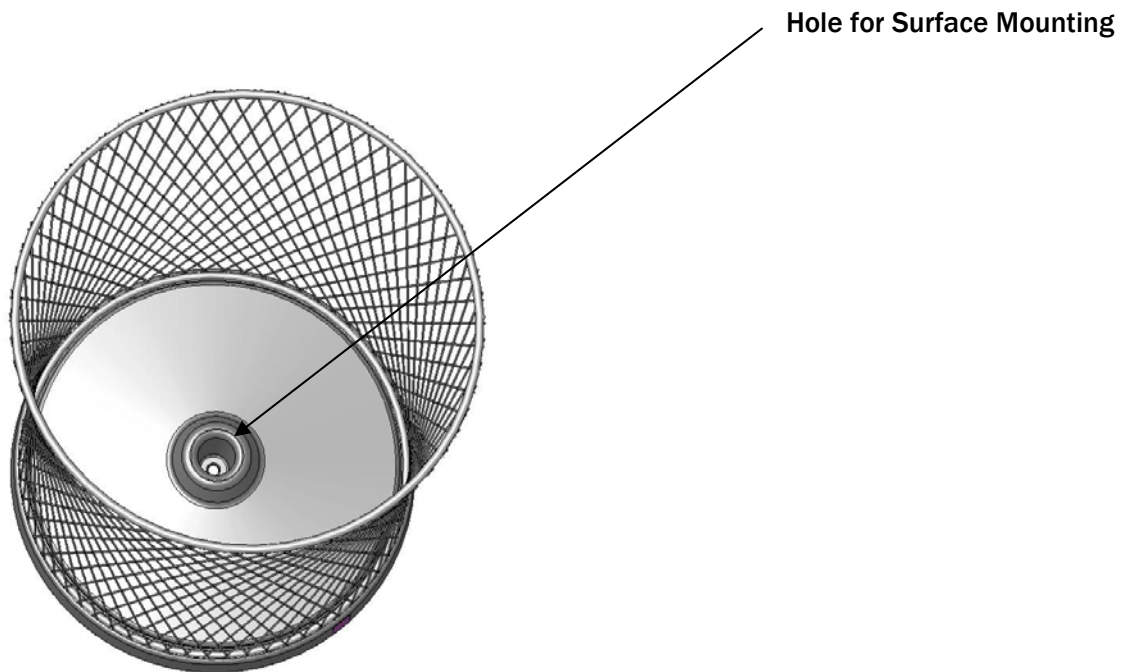
7/2007

Pacific™ Litter Receptacle

HANDLE WITH CARE! Pangard II® Polyester Powder coat is a strong, long-lasting finish. Protect this finish from damage during installation. Place unwrapped powder coated parts on packaging foam or other non-abrasive surface. Do not place or slide powder coated parts on concrete or other hard or abrasive surfaces – this will damage the finish causing rust to occur. Use touch-up paint to repair any finish abrasions.

Recommended Procedure for Surface Mounting:

1. All litter receptacle bases have a center hole that will accommodate anchors 1/2" diameter or less.
2. The installer is responsible for anchoring hardware suitable for site conditions. Corrosion resistant anchors are recommended. The receptacle should be surface mounted with nylon glides in place.
3. Place the unit in the desired position.
4. Remove the top and lift out the liner.
5. Mark anchor location through the hole in the base.
6. Move the unit to allow access for drilling holes.
7. Complete the installation according to the anchor manufacturer's instructions.



7/2007

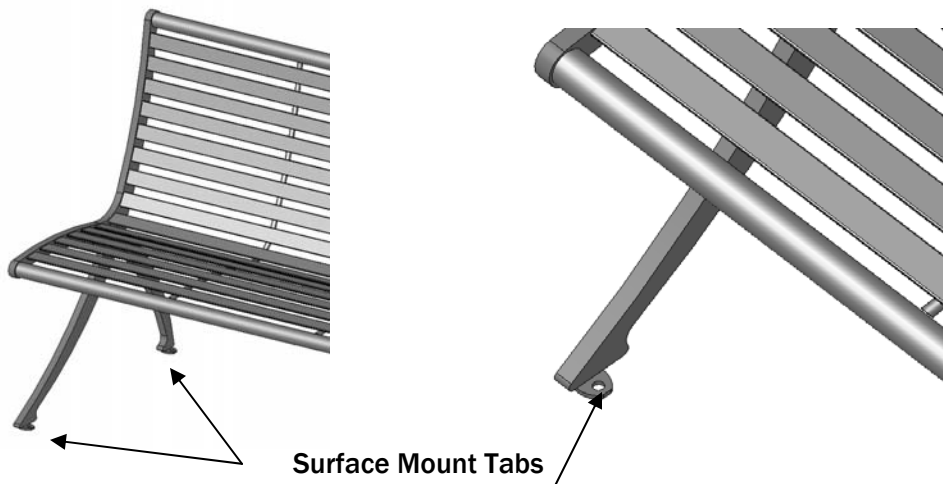
Parc Vue® Bench

HANDLE WITH CARE! Pangard II® polyester powder coat is a strong, long-lasting finish. Protect this finish from damage during installation. Place unwrapped powder coated parts on packaging foam or other non-abrasive surface. Do not place or slide powder coated parts on concrete or other hard or abrasive surfaces – this will damage the finish causing corrosion to occur. Use touch-up paint to repair any finish abrasions.

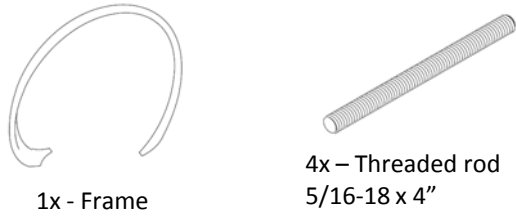
Recommended procedure for surface mounting:

Each bench is shipped with four mounting plates installed. Each plate can accept one anchor up to 3/8" thread size. Although the anchoring procedure and hardware are the responsibility of the installer, we suggest the following:

1. Select corrosion resistant anchors appropriate for the surface. Your hardware store or builders supply may be able to recommend the proper hardware, tools, and safety equipment.
2. Check the screws that fasten the mounting plates to the bench. Align plate to inside (as shown below) and tighten mount screws if necessary.
3. Place the bench in the desired position.
4. Mark hole locations.
5. Move the bench to allow access for drilling holes.
6. Install the anchors and bench according to the anchor manufacturer's instructions.



Included components



Tools Required

- Unit ships assembled
- Hammer drill with $\text{Ø}7/16$ masonry bits
- For embedded mount option: chemical anchoring adhesive (Hilti HIT RE 500 or equivalent)

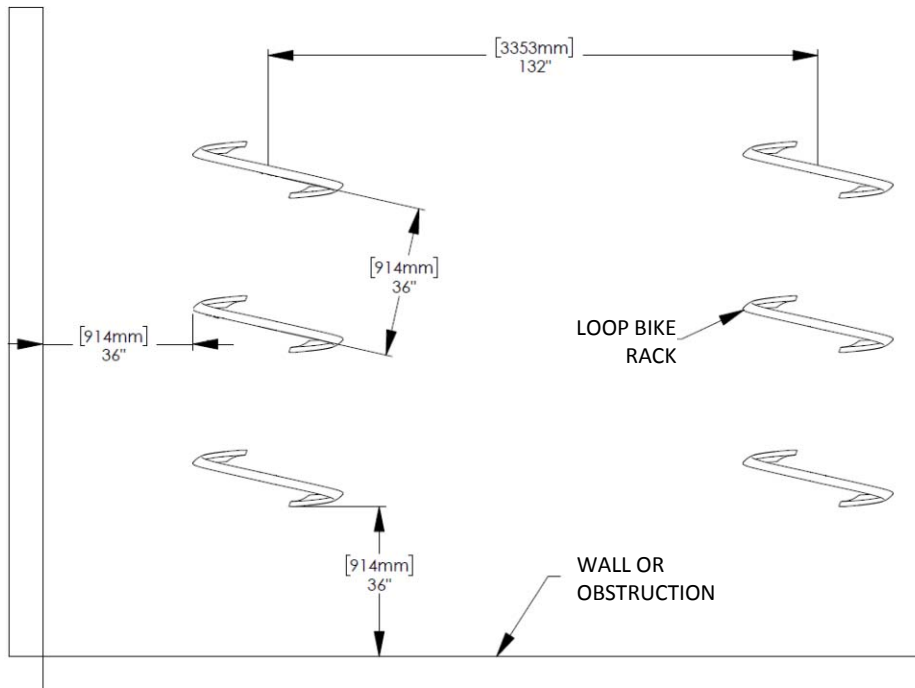


Fig. 1. - Recommended spacing, according to Association of Pedestrian and Bicycle Professionals (APBP)

ASSEMBLE WITH CARE! Pangard II® Polyester Powdercoat is a strong, long-lasting finish. To protect this finish during assembly, place unwrapped powdercoated parts on packaging foam or other non-marring surface. Do not place or slide powdercoated parts on concrete or other hard or textured surface – this will damage the finish causing rust to occur. Use touch-up paint on any gouges in the finish caused by assembly tools.

WARNING! Unit must be anchored.

FOR EMBEDDED MOUNT:

1. Thread anchor rods into bike rack. Verify that threaded rods are fully threaded into casting.
2. Set unit in position and mark hole locations.
3. Move unit. Drill holes according to Fig. 2.
4. Clear holes of debris using compressed air and wire brush.
5. Test fit unit in position to be sure threaded rods are not resting on the bottom of the drilled holes.
6. Fill holes with recommended amount of anchoring adhesive/epoxy.
7. Set unit in position.
8. Wipe away excess epoxy before it cures.

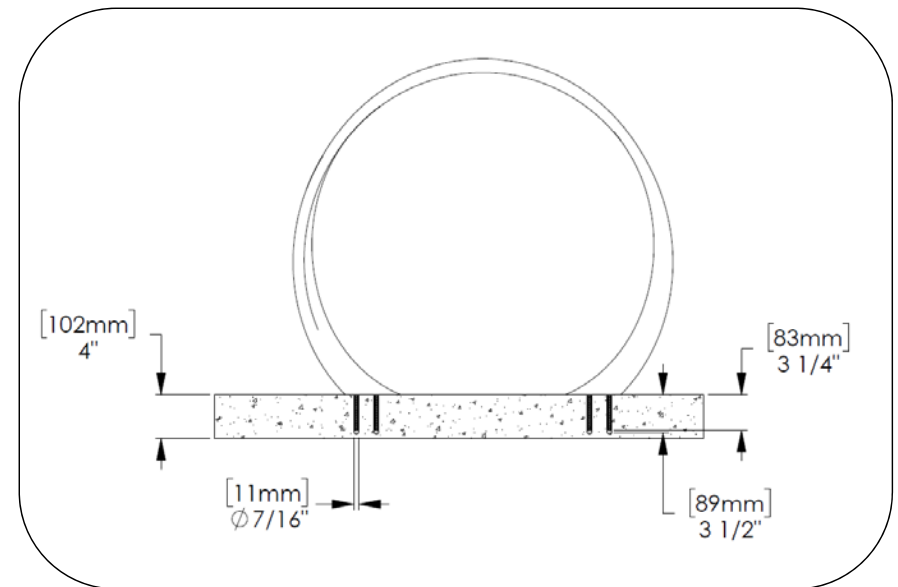


Fig. 2. – Hole size for embedded bike rack

Quote

ORIGINAL

Date: 03/13/2025
 LF Quote#: 0000432513
 PO#:

Project: Lexington-Fayette Urban County Government Senior and Therapeutic Center

Bill To: Bidders Quote - Alex Filiputti
 ATTN:
 TBA
 Kalamazoo

CORPORATE
 7800 E. Michigan Avenue
 Kalamazoo, MI 49048-9543
 P: 800.521.2546 F: 269.381.3455
 www.landscapeforms.com
 Federal I.D.# 38-1897577
 FSC# NC-COC-001261

Ship To: Bidders Quote - Alex Filiputti
 ATTN:
 3360 Shilito Park Road
 Lexington, KY 40503

Ship To Contact Phone:
 Ship Via: Common Carrier
 F.O.B.: Destination

Qty	Description	Unit Price	Total Price
-----	-------------	------------	-------------

When ordering please confirm:

- Shipping address and contact information (name and ph#)
- Billing address and contact information
- Is your firm or the project tax exempt? If so, exemption certificate must accompany order
- Delivery schedule:

____ Ship immediately upon completion
 OR Ship On/After the date: _____

3	Parc Vue Bench Length: <i>72" length</i> Style: <i>Backed</i> Mounting: <i>Surface Mount</i> Arm Divider Option: <i>End Arms</i> Powdercoat Color: <i>To Be Advised</i>	\$ 2,100.00	\$ 6,300.00
3	Loop Bike Rack Mounting: <i>Embedded</i> Finish: <i>Powdercoated</i> Options: <i>No Options</i> Powdercoat Color: <i>To Be Advised</i>	\$ 530.00	\$ 1,590.00
1	Grenadier Ash Urn Mounting: <i>Removable</i> Powdercoat Color: <i>To Be Advised</i> Standard Features: <i>1.75 Gallons -- 35" x 10" x 10"</i>	\$ 680.00	\$ 680.00

Cust #: LFBID
 SSR: Alex Filiputti
 Rep: Unrepped Tennessee, TN1

Landscape Forms Customer Service

Purchaser

Seller

Quote

Date: 03/13/2025
LF Quote#: 0000432513
PO#:

Project: Lexington-Fayette Urban County Government Senior and Therapeutic Center

Bill To: Bidders Quote - Alex Filippiti
ATTN:
TBA
Kalamazoo

CORPORATE

7800 E. Michigan Avenue
Kalamazoo, MI 49048-9543
P: 800.521.2546 F: 269.381.3455
www.landscapeforms.com
Federal I.D.# 38-1897577
FSC# NC-COC-001261

Ship To: Bidders Quote - Alex Filippiti
ATTN:
3360 Shilito Park Road
Lexington, KY 40503

Ship To Contact Phone:
Ship Via: Common Carrier
F.O.B.: Destination

Qty	Description	Unit Price	Total Price
		Item Total	\$ 8,570.00
		Shipping & Handling	\$ 990.00
		Sub Total	\$ 9,560.00
		Estimated Tax	\$ 573.60
		Document Total	\$ 10,133.60

Payment Terms: Pending-Net30

Landscape Forms, Inc. reserves the right to change payment terms based on payment history as well as information obtained from commercial credit reporting agencies.

- Purchaser is responsible for confirming options, materials, quantities, etc., for completeness and conformity to plans and specifications.
- Changes to or cancellations of orders may incur a penalty charge of 30% or more. Special orders may not be changed or cancelled.
- Studio 431 (custom) orders cannot be cancelled once purchase order is received and approved.
- Studio 431 orders are subject to price increase after engineering/product development is complete and approved by designer, end user and purchaser. Modifications in price will be handled via Change Order.
- All orders that include a swing product must include an executed liability waiver to be accepted and entered into production.
- Only the Material Supplier Standard Limited Warranty shall apply to all product sold by Landscape Forms. No other warranties or changes to the standard warranty will be applied or accepted.
- No merchandise can be returned without authorization from Landscape Forms. Returns may be subject to a disposition fee of 30-100%.
- Prices based on quantities shown and quantity changes may affect price.
- QUOTED prices are held for 60 days. After receipt of a written ORDER, prices will be held for up to twelve months from receipt of the order. Changes in quantity or specification may affect pricing. Upfit and Scenic pricing will only be held for six months after receipt of a written order.
- Pricing includes selection from our standard color palette. Optional colors and custom color matches are available for an additional fee and will extend lead-time. Please contact our corporate office for more information.
- Fixtures for custom products are the property of Landscape Forms, Inc., and are not available for sale.

Page: 2 of 3

Cust #: LFBID
SSR: Alex Filippiti
Rep: Unrepped Tennessee, TN1

Landscape Forms Customer Service

Purchaser

Seller

landscapeforms®

Quote

Date: 03/13/2025
LF Quote#: 0000432513
PO#:

Project: Lexington-Fayette Urban County Government Senior and
Therapeutic Center

Bill To: Bidders Quote - Alex Filippiti
ATTN:
TBA
Kalamazoo

CORPORATE

7800 E. Michigan Avenue
Kalamazoo, MI 49048-9543
P: 800.521.2546 F: 269.381.3455
www.landscapeforms.com
Federal I.D.# 38-1897577
FSC# NC-COC-001261

Ship To: Bidders Quote - Alex Filippiti
ATTN:
3360 Shilito Park Road
Lexington, KY 40503

Ship To Contact Phone:
Ship Via: Common Carrier
F.O.B.: Destination

- Landscape Forms is a supplier only and ships via common carrier. Customer is responsible for offloading and installing unless otherwise indicated above.
- Handling fees alone will apply on third party and customer pick-up orders.
- Mounting hardware is only available on a limited number of products. Please consult the installation recommendations or contact our corporate office to confirm. In the event hardware is provided, it MUST be used for proper installation.
- Refer to Care and Maintenance guidelines for more detailed information and instructions.
- All orders ship upon completion of fabrication. A one-week grace period may be available, after which storage fees will apply.
- This Agreement contains the entire understanding between the parties. All prior communications are merged into this Agreement. The terms of this Agreement shall control any conflict between documents.
- This Agreement may be signed by the parties separately and by facsimile, and together they shall be deemed one binding, original Agreement.
- Purchaser shall pay all costs and expenses paid or incurred by Landscape Forms, Inc. in collecting any amounts due for goods purchased by Purchaser, including without limitation, reasonable attorneys' fees and collection costs. Balances on invoices not paid within 30 days of date of invoice, or within an alternate period of time as determined and indicated by Landscape Forms, shall incur interest at a rate of 18% per annum. Cash discounts are not offered.
- The quoted price may include estimated tax, duties and tariffs. Actual tax, duties and tariffs shall be purchaser's responsibility and may be added to an invoice as a separate and additional charge to purchaser unless an acceptable exemption certificate is presented.
- To the extent purchaser supplies or modifies the standard specifications for any products, Landscape Forms, Inc. expressly disclaims all representations and warranties related to such products or their design whether express or implied except that the products shall be manufactured in accordance with purchaser's specifications.
- **REMITTANCE OPTIONS:** For information on paying via credit card, ACH, direct bank transfer, or wire please email us at AR@landscapeforms.com. Please note all credit card charges will be subject to a 3% surcharge. Mail payments to:

USD Checks

Landscape Forms, Inc.
Dept 78073
PO Box 78000
Detroit, MI 48278-0073
USA

CAD Cheques

Landscape Forms, Inc.
PO Box 2408
Station A
Toronto, Ontario M5W 2K6
CAN

Page: 3 of 3

Cust #: LFBID
SSR: Alex Filippiti
Rep: Unrepped Tennessee, TN1

Landscape Forms Customer Service

Purchaser

Seller

landscapeforms®



PR-20
Revision 1: 05.22.26

SENIOR & THERAPUDIC CENTER – CHANGE ORDER PROPOSAL

Scope of Work:

PR-20 ~~\$1,230.94~~ **\$1,070.38**

Included in the price are the following items:

- 1) Labor and materials to set the swing frame. Excludes the swing fame or any components.
 - a. Labor: 8 hrs. * \$55.00/hr. = \$440.00
 - b. Concrete Materials: \$195.78
 - c. Core-Drill: \$434.60
 - ~~d. Markup: \$1,070.38 * 15% OH&P = \$160.56~~

Instant Signs
 Billing- 2350 Woodhill Dr Suite 10, Lexington KY 40509.....
 Shipping- 2168 Christian Rd Lexington, KY 40509
 sales@instantsignslex.com
 (859) 268-5204



sales • fabrication • installation • service

www.instantsignslex.com

Quote 21286

LFUCG Senior Center Project

SALES REP INFO
 Holly May
 Director of Project Management
 holly@instantsignslex.com
 (859) 940-6432

QUOTE DATE
 06/01/2026
 QUOTE EXPIRY DATE
 07/01/2026
 TERMS
 COD

REQUESTED BY
 Calhoun Construction
 1708 Jaggie Fox Way
 Lexington, KY 40511

CONTACT INFO
 daniel Valentine
 danielvalentine@calhounconstructs.com
 (859) 618-6482

#	ITEM	QTY	UOM	U.PRICE	TOTAL (EXCL. TAX)	TAXABLE
1	Sign □ Building Address Sign Double sided sign Height □ 30□ Width □ 24□ Depth □ □TBD (not including raised border) Custom angled top shape - Non-illuminated Double sided cabinet with aluminum faces Aluminum faces painted white 2" deep raised aluminum border on both faces Raised border and cabinet returns, painted PMS□□□□□□ blue Includes Oracal 751 vinyl graphics applied to both faces (colors TBD) Saddle mounts for double pole install (pole sizes and center to center dims TBD) Includes two 3" square x approx. 80" long aluminum posts, painted PMS□□□□□□ Se□□ice Pa□□ts Concrete	1	Each	\$-3,013.39	\$-3,013.39	Y
2	Sign Installation (CREDIT) Credit on install to remove sign 4 from scope Installation Address: 3360 Shillito Park Rd Lexington KY 40503	1	Each	\$-480.00	\$-480.00	N

CUSTOMER NOTE:

Terms and Conditions

Site Survey:

1. A technical survey is required for all installations. A technical survey is not a guarantee of site conditions. Instant Sign technicians cannot determine the contents behind sealed walls or areas with no access. If there is insufficient access to a proposed sign location it is the customer's responsibility to provide access, this will be done at the customer's expense.
2. A sales survey and a technical survey are different and are not completed at the same time. A technical survey will be completed upon receipt of deposit for sign manufacturing or installation.

Artwork Proofs:

1. All jobs include a \$50 nonrefundable design fee. This fee will allow up to 2 hours of design time.
2. If the 2 hours are exceeded, we will bill each additional design hour at \$50.00 per hour.
3. It is the customer's responsibility to provide Instant Signs with vector artwork for sign production. If you do not have vector artwork, we will vectorize the provided artwork at a cost of \$40 per art file.
4. If engineering is needed, this service will be provided by a 3rd party vendor and charged to the client. The client may choose to provide their own engineering.
5. We will produce your sign package based on your approved proof. If your sign does not match your approved proof, please notify us immediately.
6. When you approve the proof, you are certifying that you have checked for spelling errors, grammatical errors, punctuation errors, sign placement, sign size, and colors. Signs produced incorrectly based off an approved proof will be corrected at the expense of the client.

Pricing Quotes:

1. All initial prices provided are for quoting purposes only and is not a guarantee of the final price. All prices are subject to change after the completion of a technical survey or sign installation. Pricing is also subject to change based on site conditions or unforeseen issues.
2. If you provide artwork for a wall sign, your artwork must show where the roofline is in conjunction with the placement of your sign.
3. If a wall sign is placed in a location that causes the electrical wires to fall between a dead space or behind a wall that is not accessible, it is the client's responsibility to pay for the additional labor and materials needed to make the necessary adjustments for installation. Adjustments may include/but are not limited to the removal and reinstallation of the sign in a different location, wall repair, adding access panels, or moving electrical connections to the exterior wall.
4. Quotes are only valid for 30 days. Any approval after a quote has expired will require the quote to be re-evaluated. A price adjustment may occur.
5. Prices are based on typical installation conditions. If a situation arises in which the installation becomes A-typical we will adjust your installation cost for additional time and materials. A-typical installations include but are not limited to: No access panel to the installation area, areas that require fishing wires more than 5ft from the sign band area, roof penetrations, penetrating steel girders or plates obstructing the sign band, lack of building access, concrete walls thicker than 6" etc.
6. Any changes to the artwork will be considered a change order and may result in a price change.

Landlord Approval:

1. It is the sole responsibility of the customer to obtain the landlord/property owners approval prior to sign production. If a sign is produced and installed without the landlord/property owner's approval, the signs removal and will be at the customer's expense.
2. If the landlord/property owner requires a sign to be removed all property restoration is at the expense of the client and not Instant Signs.

Deposit, Payments, and Storage Fees:

1. Any payment using debit or credit card will incur a 3% convenience fee.
2. Any sign package over \$100.00 that requires Instant Signs to provide any type of manufacturing or print will require a 50% deposit.
3. Your invoice balance is due the day your installation is completed. If you are on payment terms such as 30 days, 45 days, 60 days, or 90-days, your term starts upon completion of the installation, not upon your receipt of payment from your client or a third party.
4. A late fee of 5% will be added for any invoice not paid upon its due date. There is no grace period.
5. A late fee will be assessed every 30-days until payment is received.
6. If Instant Signs has completed the manufacturing of your sign package and the package cannot be installed for any reason outside of Instant Signs control, Instant Signs will charge a storage fee. Storage fees start at \$300.00 per month but may be more depending upon the size and quantity of the sign.
7. If Instant Signs has taken receipt of a customer's sign package but the package cannot be installed for any reason outside of Instant Signs control, we will charge a storage fee. Storage fees start at \$300.00 per month but maybe more depending upon the size of the sign package.

Permitting, Lane Closures Traffic Plans:

1. The permit procurement fee is not the same as the permit fee and will be billed separately on a separate line item.
2. Instant Signs does not issue permits. Permits are issued by the municipality where the business is physically located.
3. Instant Signs will not install a sign without a permit if a permit is required. We use the guidelines of the municipality to determine when a permit is required.
4. Permit fees are billed to you at cost. A copy of the permit and receipt will be provided upon request.
5. Lane closures are treated like permits. We will bill administrative cost separately from the actual permit cost.
6. If a traffic plan is required, we will add this cost to your invoice upon approval from the municipality.

Production:

CUSTOMER NOTE:

1. Production completion dates are estimated completion dates and are not guaranteed. We will provide notice when a date is changed.
2. We will not produce a sign package that requires a permit until the permit has been approved.
3. Your sign will not be moved to our production que until the 50% deposit has been paid and all required permits, if any, have been approved.

Shipping Receiving:

1. You must provide 7 days advance written notice of when a sign package is being shipped to our facility.
2. All shipment must be delivered to 2168 Christian Road, Lexington KY 40509.
3. All sign packages must be delivered between the hours of 8:00 am - 3:30 pm Monday thru Friday.
4. Any shipment sent without notice will be turned away and rescheduled.
5. If additional equipment is needed to unload your shipment we will add this cost to our invoice.
6. We will bill an hourly rate for the receiving and inspection of your sign package. We will notify you of any visible damage within 48 hrs. of the receipt of the sign package.
7. We are not liable for damage to sign packages that have been in our warehouse for a period greater than 30-days.

Electrical:

1. Electrical connection is the sole responsibility of the customer. Instant Signs does not provide final electrical connections or high voltage repairs/installs. We will provide a low voltage connection if a j-box is available while we are onsite.
2. You must provide a photocell or timer if you would like the sign to turn on and off automatically.
3. If the power to an existing sign is not functioning as it should prior to install, Instant Signs is not liable to bring the sign to operating standards. All malfunctions will be brought to the attention of the property owner. The property owner will be responsible for all repairs and repair cost.
4. If our electric must penetrate above a roof line, it is the client's responsibility to hire a roofer to seal all roof penetrations. Instant Signs is not liable for any leaks or voided warranty our penetrations may cause.

Roof Penetrations:

1. It is the client's sole responsibility to get landlord/property owners approval for any required roof penetrations.
2. If a roof penetration was not approved by the landlord, it is the client's responsibility to provide the landlord with reparations for the unauthorized work.
3. All roof penetrations will be sealed using clear caulk—however, this is not sufficient for preventing water leaks. A licensed roofer should be hired to seal all roof penetrations.
4. When a mansard roof support is required, it is the client's responsibility to ensure all penetration has been sealed by a licensed roofer.

Foundations:

1. If an excavated foundation caves in or we encounter larger rock there will be additional expenses in the way of additional concrete, equipment, backhoe time, digging time, etc.
2. Instant Signs does not provide "Finished" concrete. If visible concrete must be "Finished" it is the client's responsibility to hire a cement mason.
3. Instant Signs does not provide "brick or stone" bases. If a brick or stone base is needed it will be the client's responsibility to hire a mason.
4. All mow pads, signs on u-channel post, and foundations requiring less than 1 cy of concrete will be "dry poured" unless otherwise specified.

Wall Signs:

1. Instant Signs does not accept paper patterns for exterior wall installations. If a paper pattern is provided for the installation of any exterior letters, numbers, or signs, Instant Signs will bill your organization to convert the paper pattern to banner material.
2. If access to the sign band is needed but not provided, Instant Signs will not proceed until access has been provided. If a job is not completed due to lack of access to the sign band area, Instant Signs will charge for all onsite time and return trips.
3. If a wall sign is installed and the wires fall into the "dead space" between the roof line and the actual ceiling, it will be the client's responsibility to compensate Instant Signs for the additional time needed to move the sign. The client will also be responsible for the cost of the wall repairs.

Warranty:

1. All signs manufactured by Instant Signs will have a 90-day labor and parts warranty. LED modules and light bars will come with a 5-year parts warranty. Instant Signs provides a 90-day labor warranty for all standard sign repairs performed by our technicians. Warranty does not cover diagnostic time, diagnostic fees, or trip charges.
2. Signs manufactured by a 3rd party are not warranted by Instant Signs. Any applicable warranty will be processed through the sign manufacturer and not Instant Signs. If Instant Signs installed the 3rd parties sign, Instant Signs provides a 90-day labor warranty. Labor warranty does not cover diagnostic time, diagnostic fees, or trip charges.

This handcrafted quote is based on specific information you've given us and is valid for 30 days.
When you approve this quote, you are agreeing to pay 100% of the quoted price. We require a 50% deposit to begin work on your project.
Once we receive your deposit, we'll schedule your project and email you an estimated completion date. The remaining balance is due upon completion of your order.
Need to make changes?
No problem - but please realize changes to quantity or specifications will affect your price. We will provide you an updated quote based on the changes.

Subtotal:	\$-3,193.39
Sales Tax (6%):	\$-180.80
Total:	\$-3,674.19

SIGNATURE:

DATE:

Change Order Request 27 - PCO #52 - PR-21: AFP and Lobby Plaque

768-- LFUCG Senior and Therapeutic Center

6/5/2026



Summary of work

Scope - Subcontractor	Description	Cost
	PR-21 AFP Changes and adding (1) plaque in Lobby 102A.	\$7,331.78

- o Office Equipment & Supplies ==> \$5,581.58
 - 1. Cast Bronze Plaque - no specs provided. See vendor quote for additional details that pertain to the cost/scope.
- o Drywall - Magna ==> \$1,750.20
 - 1. Credit for original AFP panels (Soundsoak).
 - 2. Add for new AFP panels (Powerstretch)
If approved, we would like to request the image from LFUCG.

Sub Total: \$7,331.78

Mark Up: \$733.18

Negotiated Project: \$0.00

Total	\$8,064.96
--------------	-------------------

Approved By:

Date:

Submitted By: Calhoun

A handwritten signature in black ink, appearing to be 'D. Calhoun', is written over a horizontal line.

Date:

6/5/26

Instant Signs
 Billing- 2350 Woodhill Dr Suite 10, Lexington KY 40509.....,
 Shipping- 2168 Christian Rd Lexington, KY 40509
 sales@instantsignslex.com
 (859) 268-5204



sales • fabrication • installation • service

www.instantsignslex.com

Quote 21329

LFUCG Senior Center Project - Change order 1

SALES REP INFO
 Holly May
 Director of Project Management
 holly@instantsignslex.com
 (859) 940-6432

QUOTE DATE
 06/05/2026
 QUOTE EXPIRY DATE
 07/05/2026
 TERMS
 COD

REQUESTED BY
 Calhoun Construction
 1708 Jaggie Fox Way
 Lexington, KY 40511

CONTACT INFO
 daniel Valentine
 danielvalentine@calhounconstructs.com
 (859) 618-6482

#	ITEM	QTY	UOM	U.PRICE	TOTAL (EXCL. TAX)	TAXABLE
1	Cast Plaque - BRONZE No specs provided - estimated standard cast bronze plaque 30" x 24" x 3/4" deep outdoor raised copy - brushed finish standard painted edges, single line border recessed background painted standard color unspecified texture Includes blind stud mount with pattern	1	Each	\$4,850.55	\$4,850.55	Y
2	Sign Installation Installation of sign <u>Installation Address: TBD</u>	1	Each	\$440.00	\$440.00	N

This handcrafted quote is based on specific information you've given us and is valid for 30 days.
 When you approve this quote, you are agreeing to pay 100% of the quoted price. We require a 50% deposit to begin work on your project.
 Once we receive your deposit, we'll schedule your project and email you an estimated completion date. The remaining balance is due upon completion of your order.
Need to make changes?
 No problem - but please realize changes to quantity or specifications will affect your price. We will provide you an updated quote based on the changes.

Subtotal: \$5,290.55
Sales Tax (6%): \$291.03
Total: \$5,581.58

Downpayment (50.0 %)

\$2,790.79

SIGNATURE:

DATE:

Change Order Request 25 - PCO #50 - PR-22 Solar Changes

768-- LFUCG Senior and Therapeutic Center

5/20/2026 1:09:50 PM



Summary of work

Scope - Subcontractor	Description	Cost
	Change optimizers associated with photovoltaic system due to new regulations (FEOC - Foreign Entity of Concern) the optimizers are being switched to Solar Edge U650.	\$11,726.78

o Solar Systems - CCS Solar ==> ==> \$11,726.78

Sub Total: \$11,726.78

Mark Up: \$1,172.68

Negotiated Project: \$0.00

Total	\$12,899.46
--------------	-------------

Approved By:

Date:

Submitted By: Calhoun

A handwritten signature in black ink, appearing to read 'Calhoun', is written over a horizontal line.

Date:

05.20.26

Change Order Request 1 - PCO #4 - COR for FEOC compliance requirements for solar materials

801-- CCS Solar - LFUCG Senior & Therapeutic Center

5/18/2026 6:35:02 PM



Summary of work

Scope - Subcontractor	Description	Cost
		\$11,726.78
o Photovoltaic Collectors ==> ==> \$11,726.78		

Sub Total: \$11,726.78

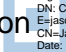
Negotiated Project: \$0.00

Total	\$11,726.78
--------------	-------------

Approved By:

Date:

Submitted By: Calhoun

Jason Johnson  Digitally signed by Jason Johnson
DN: C=US,
E=jasonjohnson@calhounconstructs.com,
CN=Jason Johnson
Date: 2026.05.18 14:39:29-04'00'

Date:

5/18/2026



Invoice

CED GREENTECH
870 CORDUROY RD
LEWIS CENTER, OH 43035

T: 6148964378

INVOICE NO.	INVOICE DATE
1154-1042596	03/04/2026
PLEASE SHOW INVOICE NO. AND REMIT TO:	
PO BOX 936557 ATLANTA, GA 31193-6557	

SOLD TO:

CALHOUN CONSTRUCTION
7707 NATIONAL TURNPIKE SUITE 400
LOUISVILLE, KY 40214

SHIP TO:

CALHOUN CONSTRUCTION
1703 S BROOK ST
LOUISVILLE, KY 40208

ACCOUNT #/NAME		JOB NAME		CUSTOMER ORDER NO.					
SY-47463 SHOP		SENIOR CENTER		LFUCG					
SALESPERSON		SHIPPING INFORMATION		SHIP VIA		SHIP DATE			
1879 EJ		PREPAID		COMM CARR		03/03/2026			
QTY ORDERED	PRODUCT CODE	DESCRIPTION	C O D E	QTY SHIPPED	PRICE	P E R	DISC.	EXTENSION	C / D
	SHIPPER TRACKING NBR: 1Z067VY30308121050								
	UPS GROUND								
	ADD FRT								
100	SOLED U650-MULTI	DOMESTIC RESI POWER OPTIMIZER 650		100	110.63	E		11063.00	0.0
<small>TITLE TO MERCHANDISE AND RISK OF LOSS OR DAMAGE PASSES AT POINT OF SHIPMENT. CLAIMS FOR SHORT OR DAMAGED MERCHANDISE SHOULD BE MADE TO CARRIER.</small> <small>MERCHANDISE RETURNED WITHOUT OUR CONSENT WILL NOT BE ACCEPTED. A RESTOCKING CHARGE WILL BE MADE ON RETURNED GOODS UNLESS DEFECTIVE OR THROUGH ERROR ON OUR PART.</small> <small>A SERVICE CHARGE OF 1 1/2% PER MONTH, BUT NOT TO EXCEED THE HIGHEST AMOUNT LAWFULLY ALLOWED BY APPLICABLE STATE LAW, WILL BE MADE ON ALL PAST DUE ACCOUNTS.</small> <small>THIS SALE IS SUBJECT TO OUR TERMS LOCATED AT SALES.OUR-TERMS.COM, WHICH WE MAY CHANGE FROM TIME TO TIME WITHOUT PRIOR NOTICE.</small>		<small>CODE: TO ADVISE YOU PROMPTLY CONCERNING YOUR ORDER, THIS CODE IS USED ON OUR INVOICES.</small> <small>B - BACK ORDERED. WILL SHIP AS SOON AS RECEIVED UNLESS INSTRUCTED TO CANCEL.</small> <small>C - CANCELLED. NOT IN STOCK. UNABLE TO PURCHASE LOCALLY.</small>		MERCHANDISE 11063.00 SALES TAX 6.00000 663.78 SHIPPING CHARGE 0.00		TOTAL DUE 11,726.78			

Change Order Request 29 - PCO #53 - PR-23 West Patio Railing & Gate

768-- LFUCG Senior and Therapeutic Center



6/8/2026 3:13:12 PM

Summary of work

Scope - Subcontractor	Description	Cost
	PR-23: West Patio Railing & Gate Add	\$8,878.00

- o Small Tools ==> \$750.00
 - 1. West Patio Gate hardware allowance (no spec provided)

- o Structural Steel Framing - Elite Fabrication ==> \$5,328.00
 - 1. Furnish approx. 11ft of railing & 1 gate at the West Patio.

- o Structural Steel - Alvarez ==> \$2,800.00
 - 1. Core-drill holes for railing posts.
 - 2. Set railing & gate.
 - 3. Grout fill post holes.

Sub Total:	\$8,878.00
Mark Up:	\$812.80
Negotiated Project:	\$0.00
Total	\$9,690.80

Approved By:

Date:

Submitted By: Calhoun

A handwritten signature in black ink, appearing to read 'Calhoun', is written over a horizontal line.

Date:

6/8/26

MEMORANDUM

Date: June 4, 2026
From: Daniel Valentine (Calhoun)
To: Lisa Grober (LFUCG) and Geoff Meehan (EOP Architects)
Subject: PR-05J - April & May 2026 Weather Delay Report

Memo:

Please note that PR-05J has not been officially issued for this weather delay claim. Therefore, the information herein pertains to inclement weather experienced during April and May of 2026 that has unfortunately impacted critical path task progress (roofing, air barrier, and exterior cladding components).

In total we would like to request eleven (11) days due to precipitation impacts on critical path tasks.

We have not inserted these weather impacts into our construction schedule as of yet to visualize the impacts to the completion dates. We are only reporting these days as they have impacted the work. We will provide additional scheduling documentation soon.

Daniel Valentine
Sr. PM
Calhoun Construction Services
859-455-6845
danielvalentine@calhounconstructs.com

Climatological Data for Lexington Area, KY (ThreadEx) - April 2026

Date	Temperature				HDD	CDD	Precipitation	New Snow	Snow Depth
	Maximum	Minimum	Average	Departure					
2026-04-01	82	61	71.5	20.4	0	7	0.01	0.0	0
2026-04-02	82	62	72.0	20.5	0	7	0.00	0.0	0
2026-04-03	82	64	73.0	21.2	0	8	0.40	0.0	0
2026-04-04	81	51	66.0	13.8	0	1	0.26	0.0	0
2026-04-05	58	40	49.0	-3.5	16	0	0.01	0.0	0
2026-04-06	65	34	49.5	-3.4	15	0	0.00	0.0	0
2026-04-07	54	35	44.5	-8.7	20	0	0.00	0.0	0
2026-04-08	68	32	50.0	-3.6	15	0	0.00	0.0	0
2026-04-09	74	51	62.5	8.5	2	0	0.00	0.0	0
2026-04-10	76	52	64.0	9.7	1	0	0.01	0.0	0
2026-04-11	69	53	61.0	6.3	4	0	0.00	0.0	0
2026-04-12	82	52	67.0	12.0	0	2	0.00	0.0	0
2026-04-13	76	61	68.5	13.1	0	4	0.14	0.0	0
2026-04-14	81	63	72.0	16.2	0	7	0.00	0.0	0
2026-04-15	83	61	72.0	15.9	0	7	0.00	0.0	0
2026-04-16	80	61	70.5	14.0	0	6	T	0.0	0
2026-04-17	81	50	65.5	8.7	0	1	0.00	0.0	0
2026-04-18	76	46	61.0	3.8	4	0	0.12	0.0	0
2026-04-19	61	37	49.0	-8.5	16	0	T	0.0	0
2026-04-20	59	42	50.5	-7.3	14	0	0.00	0.0	0
2026-04-21	76	39	57.5	-0.7	7	0	0.00	0.0	0
2026-04-22	79	54	66.5	8.0	0	2	0.00	0.0	0
2026-04-23	81	51	66.0	7.2	0	1	0.00	0.0	M
2026-04-24	81	56	68.5	9.3	0	4	0.06	0.0	0
2026-04-25	76	57	66.5	7.0	0	2	0.03	0.0	0
2026-04-26	71	53	62.0	2.2	3	0	0.00	0.0	0
2026-04-27	81	53	67.0	6.9	0	2	0.49	0.0	M
2026-04-28	76	59	67.5	7.1	0	3	0.76	0.0	0
2026-04-29	67	53	60.0	-0.7	5	0	0.38	0.0	0
2026-04-30	61	43	52.0	-9.0	13	0	0.00	0.0	0
Sum	2219	1526	-	-	135	64	2.67	0.0	-
Average	74.0	50.9	62.4	6.2	-	-	-	-	0.0
Normal	67.2	45.2	56.2	-	287	23	4.42	0.2	-

Observations for each day cover the 24 hours ending at the time given below (Local Standard Time).

Max Temperature : midnight

Min Temperature : midnight

Precipitation : midnight

Snowfall : midnight

Snow Depth : 7am

LEGEND

- Precipitation, >/=0.10"
- Affected by Previous Precipitation
- Snow
- Temperature (low/hi)
- Wind

Five (5) days where precipitation was 0.10" or greater.



Calhoun Construction Services
 1703 S Brook St
 Louisville, Kentucky 40208
 United States

Printed on Thu Jun 4, 2026 at 11:07 am EDT
 Job #: 768 LFUCG Senior and Therapeutic Center
 3360 Shillito Park
 Lexington Kentucky. 40503

Daily Log Weather Delays For LFUCG Senior and Therapeutic Center

Date	Ground Conditions	Wind Conditions	Sky Conditions	Calamity	Temperature	Average	Precipitation	Comments	Attachments
04/29/26	Wet/Muddy	Light Wind	Rain		Mild			Rain barrier and roofing cannot take place.	
04/28/26	Wet/Muddy	Light Wind	Rain		Mild			Alot of rain fell overnight. Tried to start with more rain barrier this morning everything is still too wet to begin. Will test in a couple hours to see if it dried up enough could be a lost day on that front.	
04/03/26	Wet/Muddy	Light Wind	Rain		Mild			Rain conditions most of the morning it had a effect on rain barrier and stone progress.	

Climatological Data for Lexington Area, KY (ThreadEx) - May 2026

Date	Temperature				HDD	CDD	Precipitation	New Snow	Snow Depth
	Maximum	Minimum	Average	Departure					
2026-05-01	62	40	51.0	-10.3	14	0	0.00	0.0	0
2026-05-02	56	35	45.5	-16.1	19	0	0.00	0.0	0
2026-05-03	63	32	47.5	-14.4	17	0	0.00	0.0	0
2026-05-04	78	51	64.5	2.3	0	0	0.05	0.0	0
2026-05-05	72	58	65.0	2.5	0	0	0.10	0.0	0
2026-05-06	61	47	54.0	-8.7	11	0	0.44	0.0	0
2026-05-07	63	41	52.0	-11.0	13	0	0.00	0.0	0
2026-05-08	71	38	54.5	-8.8	10	0	0.00	0.0	0
2026-05-09	73	56	64.5	1.0	0	0	T	0.0	0
2026-05-10	77	55	66.0	2.2	0	1	0.00	0.0	0
2026-05-11	71	48	59.5	-4.6	5	0	0.03	0.0	0
2026-05-12	76	41	58.5	-5.8	6	0	0.00	0.0	0
2026-05-13	75	51	63.0	-1.6	2	0	0.01	0.0	0
2026-05-14	65	41	53.0	-11.9	12	0	0.00	0.0	0
2026-05-15	72	41	56.5	-8.6	8	0	0.00	0.0	0
2026-05-16	82	61	71.5	6.1	0	7	T	0.0	0
2026-05-17	87	64	75.5	9.8	0	11	0.00	0.0	0
2026-05-18	90	68	79.0	13.1	0	14	0.00	0.0	0
2026-05-19	88	67	77.5	11.3	0	13	0.00	0.0	0
2026-05-20	80	63	71.5	5.0	0	7	0.21	0.0	0
2026-05-21	63	54	58.5	-8.2	6	0	0.44	0.0	0
2026-05-22	74	58	66.0	-1.0	0	1	0.83	0.0	0
2026-05-23	78	66	72.0	4.7	0	7	0.41	0.0	0
2026-05-24	77	65	71.0	3.5	0	6	0.64	0.0	0
2026-05-25	79	61	70.0	2.2	0	5	T	0.0	0
2026-05-26	76	66	71.0	2.9	0	6	0.87	0.0	0
2026-05-27	84	68	76.0	7.7	0	11	0.03	0.0	0
2026-05-28	83	63	73.0	4.4	0	8	0.00	0.0	0
2026-05-29	82	57	69.5	0.6	0	5	0.00	0.0	0
2026-05-30	83	60	71.5	2.3	0	7	0.00	0.0	0
2026-05-31	81	54	67.5	-2.0	0	3	0.00	0.0	0

Observations for each day cover the 24 hours ending at the time given below (Local Standard Time).

Max Temperature : midnight

Min Temperature : midnight

Precipitation : midnight

Snowfall : midnight

Snow Depth : 7am

LEGEND

Precipitation, >/=0.10"

Affected by Previous Precipitation

Snow

Temperature (low/hi)

Wind

Six (6) days where precipitation was 0.10" or greater.



Calhoun Construction Services
 1703 S Brook St
 Louisville, Kentucky 40208
 United States

Printed on Thu Jun 4, 2026 at 11:08 am EDT

Job #: 768 LFUCG Senior and Therapeutic Center
 3360 Shillito Park
 Lexington Kentucky. 40503

Daily Log Weather Delays For LFUCG Senior and Therapeutic Center

Date	Ground Conditions	Wind Conditions	Sky Conditions	Calamity	Temperature	Average	Precipitation	Comments	Attachments
05/26/26	Wet/Muddy		Rain		Mild			Had rain all weekend continue with rain all day today and looks like tomorrow. So, no roofing or concrete can take place.	
05/22/26	Wet/Muddy	Light Wind	Rain		Mild			Rained all day no roofing could take place critical path activity.	
05/21/26	Wet/Muddy		Rain		Mild			Rained all day no roofing could take place critical path activity.	
05/04/26	Wet/Muddy		Rain		Mild			More rain didn't allow rain barrier to continue due to moisture in gypsum boards.	