

Spread planting soil to a depth of 12 inches but not less than required to meet finish grades after natural settlement. Do not spread if planting soil or subgrade is frozen, muddy, or excessively wet.

Spread approximately one-half the thickness of planting soil over loosened subgrade. Mix thoroughly into top 2 inches of subgrade. Spread remainder of planting soil.

Finish Grading: Grade planting areas to a smooth, uniform surface plane with loose, uniformly fine texture. Roll and rake, remove ridges, and fill depressions to meet finish grades.

Before planting, obtain Owner/Urban Forester's acceptance of finish grading; restore planting areas if eroded or otherwise disturbed after finish grading.

### **19.17 EXCAVATION FOR TREES AND SHRUBS**

Planting Pits and Trenches: Excavate circular planting pits with sides sloping inward at a 30-45 degree angle. Excavations with vertical sides are not acceptable. Trim perimeter of bottom leaving center area of bottom raised slightly to support root ball and assist in drainage away from center. Do not further disturb base. Ensure that root ball will sit on undisturbed base soil to prevent settling. Scarify sides of planting pit smeared or smoothed during excavation.

Excavate approximately three times as wide as ball diameter for balled and burlapped, balled and potted or container-grown stock.

Excavate at least 12 inches wider than root spread and deep enough to accommodate vertical roots for bare-root stock.

Do not excavate deeper than depth of the root ball, measured from the root flare to the bottom of the root ball.

If area under the plant was initially dug too deep, add soil to raise it to the correct level and thoroughly tamp the added soil to prevent settling.

Maintain required angles of repose of adjacent materials as shown on the Drawings. Do not excavate subgrades of adjacent paving, structures, hardscapes, or other new or existing improvements.

Maintain supervision and protection of excavations at all times during the project.

Keep excavations covered or otherwise protected when unattended by Installer's personnel.

If drain tile is shown on Drawings or required under planting areas, excavate to top of porous backfill over tile.

Subject to the acceptance of the Owner/Urban Forester, subsoil and topsoil removed from excavations may be used as planting soil.

Obstructions: Notify Owner/Urban Forester if unexpected rock or obstructions detrimental to trees or shrubs are encountered in excavations.

Hardpan Layer: Drill 6-inch- diameter holes, 24 inches apart, into free-draining strata or to a depth of 10 feet, whichever is less, and backfill with free-draining material.

Fill excavations with water and allow to percolate away before positioning trees and shrubs. Drainage: Notify Architect if subsoil conditions evidence unexpected water seepage or retention in tree or shrub planting pits.

#### **19.18 TREE PLANTING**

Before planting, verify that root flare is visible at top of root ball according to ANSI A300 standards. If root flare is not visible, remove soil in a level manner from the root ball to where the top-most root emerges from the trunk. After soil removal to expose the root flare, verify that root ball still meets size requirements.

Remove stem girdling roots and kinked roots on bare rooted plant material. Remove injured roots by cutting cleanly; do not break.

Set balled and burlapped stock plumb and in center of planting pit or trench with root flare 1 inch above adjacent finish grades.

Use planting soil for backfill.

After placing some backfill around root ball to stabilize plant, carefully cut and remove burlap, rope, and wire baskets from tops of root balls and from sides, but do not remove from under root balls. Remove pallets, if any, before setting. Do not use planting stock if root ball is cracked or broken before or during planting operation.

Backfill around root ball in layers, tamping to settle soil and eliminate voids and air pockets. When planting pit is approximately one-half filled, water thoroughly before placing remainder of backfill. Repeat watering until no more water is absorbed.

Place planting tablets in each planting pit when pit is approximately one-half filled; in amounts specified in soil reports from soil-testing laboratory. Place tablets beside the root ball about 1 inch from root tips; do not place tablets in bottom of the hole.

Continue backfilling process. Water again after placing and tamping final layer of soil.

Set balled and potted or container-grown stock plumb and in center of planting pit or trench with root flare 1 inch above adjacent finish grades.

Use planting soil for backfill.

Carefully remove root ball from container without damaging root ball or plant.

Backfill around root ball in layers, tamping to settle soil and eliminate voids and air pockets. When planting pit is approximately one-half filled, water thoroughly before placing remainder of backfill. Repeat watering until no more water is absorbed.

Place planting tablets in each planting pit when pit is approximately one-half filled; in amounts recommended in soil reports from soil-testing laboratory. Place tablets beside the root ball about 1 inch from root tips; do not place tablets in bottom of the hole.

Continue backfilling process. Water again after placing and tamping final layer of soil.

Set fabric bag-grown stock plumb and in center of planting pit or trench with root flare 1 inch above adjacent finish grades.

Use planting soil for backfill.

Carefully remove root ball from fabric bag without damaging root ball or plant. Do not use planting stock if root ball is cracked or broken before or during planting operation.

Backfill around root ball in layers, tamping to settle soil and eliminate voids and air pockets. When planting pit is approximately one-half filled, water thoroughly before placing remainder of backfill. Repeat watering until no more water is absorbed.

Place planting tablets in each planting pit when pit is approximately one-half filled; in amounts recommended in soil reports from soil-testing laboratory. Place tablets beside the root ball about 1 inch from root tips; do not place tablets in bottom of the hole.

Continue backfilling process. Water again after placing and tamping final layer of soil.

Set and support bare-root stock in center of planting pit or trench with root flare 1 inch above adjacent finish grade.

Use planting soil for backfill.

Spread roots without tangling or turning toward surface, and carefully work backfill around roots by hand. Puddle with water until backfill layers are completely saturated. Plumb before backfilling, and maintain plumb while working backfill around roots and placing layers above roots.

Place planting tablets in each planting pit when pit is approximately one-half filled; in amounts recommended in soil reports from soil-testing laboratory. Place tablets beside soil-covered roots about 1 inch from root tips; do not place tablets in bottom of the hole or touching the roots.

Continue backfilling process. Water again after placing and tamping final layer of soil. When planting on slopes, set the plant so the root flare on the uphill side is flush with the surrounding soil on the slope; the edge of the root ball on the downhill side will be above the surrounding soil. Apply enough soil to cover the downhill side of the root ball.

### **19.19 MECHANIZED TREE SPADE PLANTING**

Trees may be planted with an approved mechanized tree spade at the designated locations. Do not use tree spade to move trees larger than the maximum size allowed for a similar field-grown, balled-and-burlapped root-ball diameter according to ANSI A300 standards, or larger than the manufacturer's maximum size recommendation for the tree spade being used, whichever is smaller.

When extracting the tree, center the trunk within the tree spade and move tree with a solid ball of earth.

Cut exposed roots cleanly during transplanting operations.

Use the same tree spade to excavate the planting hole as was used to extract and transport the tree.

Plant trees as shown on Drawings, following procedures in "Tree, Shrub, and Vine Planting" Article.

Where possible, orient the tree in the same direction as in its original location.

### **19.20 TREE PRUNING**

Remove only dead, dying, or broken branches. Do not prune for shape.

Prune, thin, and shape trees, shrubs, and vines as directed by Owner/Urban Forester.

Prune, thin, and shape trees, shrubs, and vines according to professional horticultural and arboricultural practices. Unless otherwise indicated by Owner/Urban Forester, do not cut tree leaders; remove only injured, dying, or dead branches from trees and shrubs; and prune to retain natural character.

Do not apply pruning paint to wounds unless authorized by Owner/Urban Forester.

### **19.21 TREE STABILIZATION**

Install trunk stabilization as follows unless otherwise indicated:

Upright Staking and Tying: Stake trees of 2- through 5-inch caliper. Stake trees of less than 2-inch caliper only as required to prevent wind tip out. Use a minimum of two stakes of length required to penetrate at least 18 inches below bottom of backfilled excavation and to

extend to the dimension shown on Drawings above grade. Set stakes and space to avoid penetrating root balls or root masses.

Use two stakes for trees up to 12 feet high and 2-1/2 inches or less in caliper; three stakes for trees less than 14 feet high and up to 4 inches in caliper. Space stakes equally around trees.

Support trees with bands of flexible ties at contact points with tree trunk. Allow enough slack to avoid rigid restraint of tree.

Staking and Guying: Stake and guy trees more than 14 feet in height and more than 3 inches in caliper unless otherwise indicated. Securely attach no fewer than three guys to stakes 30 inches long, driven to grade.

#### Site-Fabricated Staking-and-Guying Method:

For trees more than 6 inches in caliper, anchor guys to wood deadmen buried at least 36 inches below grade. Provide turnbuckle or compression spring for each guy wire and tighten securely.

Support trees with bands of flexible ties at contact points with tree trunk and reaching to turnbuckle or compression spring. Allow enough slack to avoid rigid restraint of tree.

Support trees with strands of cable or multiple strands of tie wire, connected to the brass grommets of tree-tie webbing at contact points with tree trunk and reaching to turnbuckle or compression spring. Allow enough slack to avoid rigid restraint of tree.

Attach flags to each guy wire, 30 inches above finish grade.

Paint turnbuckles or compression springs with luminescent white paint.

Proprietary Staking and Guying Device: Install staking and guying system sized and positioned as recommended by manufacturer unless otherwise indicated and according to manufacturer's written instructions.

## **19.22 PLANTING AREA MULCHING**

Mulch backfilled surfaces of planting areas and other areas indicated.

Trees in Turf Areas: Apply organic mulch ring of 2-inch average thickness, with 12-inch radius around trunks or stems. Do not place mulch within 3 inches of trunks or stems.

## **19.23 PLANT MAINTENANCE**

Maintain plantings by pruning, cultivating, watering, weeding, fertilizing, mulching, restoring planting saucers, adjusting and repairing tree-stabilization devices, resetting to proper grades or vertical position, and performing other operations as required to establish healthy, viable plantings. Spray or treat as required to keep trees and shrubs free of insects and disease.

Fill in as necessary soil subsidence that may occur because of settling or other processes. Replace mulch materials damaged or lost in areas of subsidence.

Apply treatments as required to keep plant materials, planted areas, and soils free of pests and pathogens or disease. Use integrated pest management practices whenever possible to minimize the use of pesticides and reduce hazards. Treatments include physical controls such as hosing off foliage, mechanical controls such as traps, and biological control agents.

Remove tree stabilization devices after 1 year from date of installation.

Water trees as required to provide 1" of water per week on average.

#### **19.24 CHEMICAL APPLICATION**

Apply pesticides and other chemical products and biological control agents in accordance with authorities having jurisdiction and manufacturer's written recommendations. Coordinate applications with Owner's operations and others in proximity to the Work. Notify Owner before each application is performed.

Pre-Emergent Herbicides (Selective and Non-Selective): Apply to tree, shrub, and ground-cover areas in accordance with manufacturer's written recommendations. Do not apply to seeded areas.

Post-Emergent Herbicides (Selective and Non-Selective): Apply only as necessary to treat already-germinated weeds and in accordance with manufacturer's written recommendations.

#### **19.25 CLEANUP AND PROTECTION**

During planting, keep adjacent paving and construction clean and work area in an orderly condition.

Protect plants from damage due to landscape operations and operations of other contractors and trades. Maintain protection during installation and maintenance periods. Treat, repair, or replace damaged plantings.

After installation and before the final inspection for completion, remove nursery tags, nursery stakes, tie tape, labels, wire, burlap, and other debris from plant material, planting areas, and Project site.

## **19.26 DISPOSAL**

Remove surplus soil and waste material including excess subsoil, unsuitable soil, trash, and debris and legally dispose of them off Owner's property.

## **19.27 BASIS OF PAYMENT**

Accepted quantities for Exterior Plants will be paid for at the Contract Unit Price as quoted (which shall be full compensation for all Work required under this section) and paid per each tree. All labor, materials, and equipment, shall be incidental to the placement of each tree.

**TECHNICAL SPECIFICATIONS**

**SECTION 20 – TREE PROTECTION FENCING**

**20.1 Not Applicable**



## TECHNICAL SPECIFICATIONS

### SECTION 21 – DETECTABLE WARNING SURFACE TILE

#### **21.1 SCOPE OF WORK**

This Section specifies the type and installation of the Detectable Warning Surface Tiles where indicated and is concurrent with the installation of concrete sidewalk ramps. Tiles shall be Access Tile (Tactile System) Cast in Place Replaceable Tile manufactured by Access Products, Inc. (241 Main Street Suite 100 – Buffalo, NY 14203, Tel: 888-679-4022, Fax: 877-679-4022, email for Tech Support: [tech@accessproducts.com](mailto:tech@accessproducts.com)).

#### **21.2 RECEIVING, STORAGE AND HANDLING**

Tiles shall be picked up from the Division of Streets, Road & Forestry during business hours (8:00 AM – 4:30 PM). The tiles shall be released on an as needed basis for the immediate work to be completed and not stock piled by the Contractor. **If any tiles are lost or damaged by the contractor such that LFUCG must furnish additional tiles, the cost of the additional tiles will be deducted from the Contractor's payments.**

#### **21.3 SITE CONDITIONS**

Environmental Conditions and Protection: Maintain minimum temperature of 40°F in spaces to receive tactile tiles for at least 48 hours prior to installations, during installation, and for not less than 48 hours after installation. Tiles shall be within +/- 10% of ambient temperature when placed. Subsequently, maintain minimum temperature of 40°F in areas where work is completed. The use of water for work, cleaning or dust control, etc. shall be contained and controlled and shall not be allowed to come into contact with nearby structures, fixtures, motor vehicles, pedestrians, etc. Provide barricades or screens to protect passengers or public. Disposal of any potentially hazardous liquids or other materials shall be made in accordance with federal state and local laws and ordinances. Cleaning materials shall have code acceptable low VOC solvent content and low flammability if used on the site.

#### **21.4 INSTALLATION**

Installation shall be performed as to Access Tile Replaceable Cast in Place Detectable/Tactile Warning Surfaces Section 32 17 26 Part 3.01 Installation. See Access Products, Inc. manufacturer's instructions for installation.

#### **21.5 BASIS OF PAYMENT**

Accepted quantities under this section shall be paid for at the unit bid price per square foot for the appropriate size of Detectable Warning Surface Tile installed. Payment shall be considered full compensation for all labor required to complete the work described in this section.

## 21.6 QUALITY ASSURANCE

A. Provide Replaceable Cast in Place Detectable/Tactile Warning Tiles and accessories as **provided by LFUCG.**

B. Installer's Qualifications: Engage an experienced installer certified in writing by Replaceable Cast in Place Detectable/Tactile Warning Tile manufacturer as qualified for installation, who has successfully completed installations similar in material, design, and extent to that indicated for project.

C. Americans with Disabilities Act (ADA): Provide Replaceable Detectable/Tactile Warning Tiles which comply with the detectable warnings on walking surfaces section of the Americans with Disabilities Act (Title III Regulations, 28 CFR Part 36 ADA STANDARDS FOR ACCESSIBLE DESIGN, Appendix A, Section 4.29.2 DETECTABLE WARNINGS ON WALKING SURFACES).

D. Engineered Polymer Composite Replaceable Cast in Place Detectable/Tactile Warning Tiles shall be manufactured from an ultra violet stabilized polymer composition with fiberglass reinforcement, the tile shall incorporate an in-line pattern of truncated domes measuring nominal 0.2" height, 0.91" base diameter, and 0.45" top diameter, and spaced center-to-center 2.35" as measured side by side. For wheelchair safety the field area shall consist of a high density, diamond grip™ pyramid micro texture of raised points 0.05" high; "Access Tile" as manufactured by Access Products, Inc., Tel: 888-679-4022, or approved equal.

1. Dimensions: Replaceable Cast in Place Detectable/Tactile Warning Tiles shall be held within the following dimensions and tolerances:  
*Specifiers Note: Edit section below by selecting desired length and width.  
Delete non relevant dimensions.*  
Length and Width: 12x12, Fasteners/Anchors: 12 min.
2. Compressive Strength of Tile when tested by ASTM D 695-08 not to be less than 25,000 PSI.
3. Tensile Strength of Tile when tested by ASTM D 638-08 not to be less than 12,500 PSI.
4. Flexural Strength of Tile when tested by ASTM D 790-07 Procedure A not to be less than 30,000 PSI.

## 21.7 DELIVERY, STORAGE AND HANDLING

A. Replaceable Cast in Place Detectable/Tactile Warning Tiles shall be suitably packaged or crated to prevent damage in shipment or handling. Finished surfaces shall be protected by sturdy plastic wrappings to protect tile from concrete residue during installation and tile type shall be identified by part number.

B. Replaceable Cast in Place Detectable/Tactile Warning Tiles shall be delivered to location at building site for storage prior to installation.

## **21.8 SITE CONDITIONS**

A. Environmental Conditions and Protection: Maintain minimum temperature of 40°F in spaces to receive Replaceable Cast in Place Detectable/Tactile Warning Tiles for at least 24 hours prior to installation, during installation, and for not less than 24 hours after installation.

B. The use of water for work, cleaning or dust control, etc. shall be contained and controlled and shall not be allowed to come into contact with the general public. Provide barricades or screens to protect the general public.

## **21.9 WARRANTY**

A. Replaceable Cast in Place Detectable/Tactile Warning Tiles shall be warranted in writing for a period of five (5) years from date of final completion. The guarantee includes defective work, breakage, deformation, fading and loosening of tiles.

**TECHNICAL SPECIFICATIONS**

**SECTION 22 ADJUST APPURTENANCES**

**22.1 Not Applicable.**

## **TECHNICAL SPECIFICATIONS**

### **SECTION 23 MUTCD SIGNAGE**

#### **23.1 SCOPE**

New traffic signage in the Work area shall generally be of the kind and in the locations indicated in this specification and on the schematic drawings in this Document. The Contractor shall, as he/she deems necessary, collect sufficient supplemental survey information to locate and identify all existing traffic signs in the Work area. He/she shall install signage as soon as Work is sufficiently complete to allow installation of permanent signage. Until the permanent installation is completed, the contractor shall maintain temporary signage consistent with needs and in accordance with the Manual on Uniform Traffic Control Devices.

#### **23.2 MATERIALS AND WORKMANSHIP**

Regulatory, warning, and guide signs shall be retroreflective or illuminated to show the same shape and similar color by both day and night as required in the Manual of Uniform Traffic Control Devices.

The standard sign dimensions prescribed in the Manual of Uniform Traffic Control Devices shall be used unless engineering judgment determines that other sizes are appropriate.

#### **23.3 MEASUREMENT AND PAYMENT**

Accepted quantities under this section shall be paid for at the Contract Unit Price per each sign for the appropriate size and type of Signage installed. The Work shall include all labor, materials, plant, and costs necessary or incidental to supplying and installing signage in a workmanlike manner. Payment will be per each sign for Signage.

## TECHNICAL SPECIFICATIONS

### SECTION 24 MUTCD STRIPING

#### **24.1 SCOPE**

New traffic markings in the Work area shall generally be of the kind and in the locations indicated in this specification and on the schematic drawings in this Document. The Contractor shall, as deemed necessary, collect sufficient supplemental survey information to locate and identify all existing traffic markings, cross walks, turn/lane direction arrows, stop bars, and other traffic markings in the Work area. CONTRACTOR shall install thermoplastic markings as soon as Work is sufficiently complete to allow installation of permanent markings. Until the permanent installation is completed, the contractor shall maintain temporary markings consistent with needs and in accordance with the *Manual on Uniform Traffic Control Devices*. For field dispensed lane markings and for preformed markings to the extent that there is no conflict with provisions herein, the work will conform to KDOH Sections 749, 847, and 848.

#### **24.2 MATERIALS AND WORKMANSHIP**

All markings shall be of thermoplastic.

Lane direction arrows, crosswalk markings, and stop bars shall be of the preformed thermoplastic type, composed of hydrocarbon resin, pigments, binders, and glass beads, which have been factory produced as a finished product to meet the requirements of the *Manual on Uniform Traffic Control Devices*. The thermoplastic shall conform to AASHTO designation M249-79 (86) with the exception of the relevant differences due to material being supplied in a preformed condition. Turn arrows shall be FHWA Standard No. 330241 and straight arrows shall be No. 330240; combination turn/thru arrows shall be No. 330142. The arrows, crosswalk markings, and stop bars should equal or exceed the specifications defined by Flint Trading, Inc.

The following are general requirements for the various markings:

**Graded Glass Beads** - The material must contain a minimum of 30 percent grades glass beads by weight. The beads shall be clear and transparent with no more than 20 percent consisting of irregular or fused spheroids and silica. The index of refraction shall not be less than 1.50.

**Pigment** - All markings for this contract except edge markings are white. A sufficient amount of titanium dioxide must be used to ensure a color similar to Federal Highway White, Color No. 17886, as per Federal Standard 595. The yellow edge markings shall contain sufficient yellow pigment to ensure a color similar to Federal Highway Yellow, Color No. 13655.

Skid Resistance - The surface must provide a minimum skid resistance value of 50 BPN when tested by ASTM E303.

Thickness - Preformed material must be supplied at a minimum thickness of 120 mils.

Environmental Resistance - The material must be resistant to deterioration due to exposure to sunlight, water, oil, gasoline, salt, or adverse weather conditions.

Application to Asphalt - Preformed material shall be applied using a propane torch per recommendations of the manufacturer. The material must be able to be applied at air and road temperatures of 32 degrees F. without any preheating of the pavement. The pavement must be clean, dry, and free of debris at the time of application. The instructions with each package shall be followed to assure proper application. While the material is still hot and receptive, the surface shall be flooded with a surplus of glass beads.

Application to Portland Cement Concrete - Requirements are the same as for asphalt except that a primer/sealer must be used prior to application to assure proper adhesion. This step shall conform to pertinent manufacturer's recommendations.

Packaging - The material shall be packaged in plastic film and with cardboard stiffeners as necessary to prevent damage by handling and transporting.

### **24.3 REMOVAL OF PERMANENT PAVEMENT MARKINGS**

Remove all permanent markings and raised pavement markers that do not conform to the traffic operation in use. Remove striping according to Section 713.03.04. Remove raised pavement markers according to Subsection 403.03.02. When the marker's casting will conform to the final marking scheme but does not conform to the current traffic operation, the department may allow lens removal in place of removing the entire marker. Additionally, when weather would prohibit patching for marker removal within 24 hours, the department may allow lens removal until such time weather permits patching.

### **PAYMENT**

Accepted quantities for MUTCD Striping shall be paid for at the Contract Unit Price as quoted (which shall be full compensation for all Work required under this Section) and paid per square foot of the item satisfactorily placed. All labor, materials, equipment, and excavation shall be incidental to the placement of Pavement Markings.

The Work shall include all labor, materials, plant, and costs necessary or incidental to supplying and installing markings in a workmanlike manner. Payment will be at the bid price for Permanent Pavement Striping and/or Symbols. Payment for temporary markings is included in payment for Maintenance of Traffic. Collecting survey information and layout are included in payment for Surveying and Staking.



## **TECHNICAL SPECIFICATIONS**

### **SECTION 25 FENCE REMOVAL**

#### **25.1 SCOPE**

Work will consist of the removal of fence as shown on the drawings. Work for this Section shall conform to the Kentucky Department of Highways Standard Specifications, Section 203, current edition and shall include all labor, materials, equipment, excavation, disposal, and incidentals necessary to complete Work. Removal areas will terminate at logical locations.

The fence removal consists of the woven wire fence that was the right of way fence that is parallel to the project and is intertwined with the trees. Care should be taken to not remove any trees unless necessary.

#### **25.2 BASIS OF PAYMENT FOR THE REMOVAL OF FENCE**

Accepted quantities for Removal of Fence will be considered incidental to Demolition.

**TECHNICAL SPECIFICATIONS**

**SECTION 26 DEBRIS REMOVAL**

**26.1 Not Applicable.**

**TECHNICAL SPECIFICATIONS**

**SECTION 27 PROJECT SIGN**

**27.1 Not Applicable.**

## **TECHNICAL SPECIFICATIONS**

### **SECTION 28 PAYMENT/PERFORMANCE BOND COST**

#### **28.1 SCOPE**

The intent of this item is to allow full payment for the direct cost of Payment and Performance Bonds required for this project. The Contractor shall be reimbursed for Payment/Performance Bond Cost in accordance with his direct cost for such bonds. The amount bid for this item shall be the direct and specific amount of the Payment/Performance Bond cost. There shall be no adjustment for the Contractor's internal cost for personnel or staff in obtaining such bonds, or for any other cost related to bonding. If such cost are not determined at the time the project is bid, the Contractor shall enter his best estimate of such cost after consulting with his bond agent. Bidder/Contractor shall also have the option of leaving this item blank, i.e. not requesting direct payment for bond costs. The final pay amount shall be the Contractor's direct cost for the Payment/Performance bond. The Contractor shall furnish a receipt from his Bonding Agent verifying the cost of the bonds. He shall also submit proof of payment that the bonds have been paid for. And, the Contractor shall submit a letter from the Bonding Agent that the bonds are in effect, are in good standing, and will be in effect for the remaining life of the project. Payment for the cost of Payment and Performance Bonds may generally be requested after the work is twenty percent (20%) complete.

#### **28.2 BASIS OF PAYMENT**

Payment for Payment/Performance Bonds shall be on a Lump Sum basis at the Contract Price quoted in the Bid Schedule. Such payment may be modified/adjusted only as permitted above, if such cost are not know at the time of submittal of the bid. Such payment will be full compensation for all labor, materials, equipment and incidentals necessary to complete the Work required by this Section.

## TECHNICAL SPECIFICATIONS

### SECTION 29 MOBILIZATION AND DEMOBILIZATION

#### 29.1 SCOPE

##### **Mobilization**

The intent of this item is to perform all preparatory work and operations necessary to move personnel, equipment, supplies, and incidentals to the project site; to establish offices, buildings, and other facilities, that are necessary for performing the work; to accomplish all other work or operations that must be performed, including costs that must be incurred, to begin work on the project.

The Contractor shall not bid an amount for Mobilization that exceeds 5 percent of the sum of the total amounts bid for all other items in the Bid Proposal, excluding Mobilization, Demobilization, and contingent amounts established for adjustments and incentives, if applicable. The LFUCG will automatically adjust any bids in excess of this amount for bid comparisons. The LFUCG will base the award on the maximum allowable bid of 5 percent. If any errors in unit bid prices for other Contract items in a Contractor's Bid Proposal are discovered after bid opening and such errors reduce the total amount bid for all other items, excluding Mobilization, Demobilization, and contingent amounts established for adjustments and incentives, so that the percent bid for mobilization is larger than 5 percent, the LFUCG will adjust the amount bid for mobilization to 5 percent of the sum of the corrected total bid amounts

##### **Demobilization**

The intent of this item is to perform all work and operations necessary to accomplish Final Cleaning-Up as specified in these Specifications, to move personnel, equipment, supplies, and incidentals from the project site; to remove all offices, buildings, and other facilities that were necessary for performing the work; and to accomplish all other work that must be performed, including cost that must be incurred, after acceptable completion of construction operations on the project.

The Contractor shall not bid an amount for Demobilization that is less than 1.5 percent of the sum of the total amounts bid for all other items in the Bid Proposal, excluding Mobilization, Demobilization, and contingent amounts established for adjustments and incentives, if applicable. The LFUCG will automatically adjust any bids that are less than this amount up to 1.5 percent to compare Bid Proposals and award the Contract. The LFUCG will award a Contract for the actual amount bid when the amount bid for demobilization exceeds 1.5 percent, or the LFUCG will award the Contract for the adjusted bid amount when the amount bid for demobilization is less than 1.5 percent.

## **29.2 PAYMENT**

Mobilization is included in the Bid Proposal as a separate bid item and the LFUCG will make partial payment for Mobilization in 2 equal or approximately equal payments. The LFUCG will make the first payment on the first pay estimate on which the Contractor's total earned value on Contract items, other than Mobilization, exceeds \$1,000. The LFUCG will make the second payment on the first pay estimate on which the Contractor has earned 5 percent or more of the total Contract amount for Contract items, other than Mobilization. The LFUCG will make both payments simultaneously when these requirements are met at the same time.

Demobilization is included in the Bid Proposal as a separate bid item, the LFUCG will pay for Demobilization according to the following schedule:

- 1) 25 percent upon formal acceptance of the project
- 2) 50 percent when the final estimate is submitted to the ENGINEER
- 3) 25 percent when the final estimate is paid.

## **TECHNICAL SPECIFICATIONS**

### **SECTION 30 NO. 2 STONE (to be used at discretion)**

#### **30.1 SCOPE**

The Work for this Section shall consist of furnishing and placing No. 2 Stone in locations as determined by the Engineer and shall include all labor, materials, equipment, excavation, and incidentals necessary to complete the Work in place, ready for use and constructed in conformance with KDOH Standard Specifications. No. 2 Stone meeting the requirements of KDOH Section 805 can be used for stabilizing sub-grade and pavement base etc.

Where soft, undesirable soil material is encountered at or below desired sub-grade elevation, undesirable material will be removed and/or bridged to develop a sufficient platform to support compaction of DGA. The depth and extent of this work shall be determined based on conditions observed and performance of compaction equipment on the sub-grade. Work shall be directed by the Engineer.

Stone will be dumped or pushed into place and walked in until support is developed for heavy equipment. The ultimate test will be the ability to provide an adequate compaction platform for the DGA.

#### **30.2 BASIS OF PAYMENT**

Payment for this Section will be at the Contract Unit Price per ton as quoted and shall be full compensation for all Work required under this section. Payment shall be based on weight tickets for stone delivered and accepted for the work. All labor, materials (other than No. 2 Stone), equipment, proof testing, excavation and disposal of excavated material shall be incidental to the placement of No. 2 Stone.

## **TECHNICAL SPECIFICATIONS**

### **SECTION 31 NO. 57 STONE (to be used at discretion)**

#### **31.1 SCOPE**

The Work for this Section shall consist of furnishing and placing No. 57 Stone in locations as determined by the Engineer and shall include all labor, materials, equipment, excavation, and incidentals necessary to complete the Work in place, ready for use and constructed in conformance with KDOH Standard Specifications. No. 57 Stone meeting the requirements of KDOH Section 805 can be used for stabilizing sub-grade and pavement base etc.

Stone will be dumped or pushed into place and walked in until support is developed for heavy equipment. The ultimate test will be the ability to provide an adequate compaction platform for the DGA.

#### **31.2 BASIS OF PAYMENT**

Payment for this Section will be at the Contract Unit Price per ton as quoted and shall be full compensation for all Work required under this section. Payment shall be based on weight tickets for stone delivered and accepted for the work. All labor, materials (other than No. 57 Stone), equipment, proof testing, excavation and disposal of excavated material shall be incidental to the placement of No. 57 Stone.



**PART IX**  
**ADDENDA**



3009 Atkinson Avenue  
Suite 400  
Lexington, Kentucky 40509

MAYOR JIM GRAY



**LEXINGTON**

TODD SLATIN  
DIRECTOR  
CENTRAL PURCHASING

**ADDENDUM #1**

**Bid Number: #75-2017**

**Date: June 5, 2017**

**Subject: Brighton Rail Trail Phase 4**

**Address inquiries to:  
Sondra Stone  
(859) 258-3320**

**TO ALL PROSPECTIVE SUBMITTERS:**

**Please be advised of the following clarifications to the above referenced Bid:**

1. Pre-bid sign-in sheet attached.
2. Bid schedule in Excel format attached. Contractor may submit Excel spreadsheet (both signed hard copy and electronic copy) in lieu of Bid Schedule in Form of Proposal. If Contractor chooses to submit Excel spreadsheet, they must also submit an electronic copy either on CD or flash drive and signature page from Form of Proposal must be submitted. Without signature page from Form of Proposal, Page P-13, bid will be considered non-responsive.

Todd Slatin, Director  
Division of Central Purchasing

All other terms and conditions of the Bid and specifications are unchanged.

This letter should be signed, attached to and become a part of your Bid.

COMPANY NAME: L-M Asphalt Partners, Ltd. dba ATS Construction

ADDRESS: 3009 Atkinson Avenue, Suite 400, Lexington, Kentucky 40509

SIGNATURE OF BIDDER: Brian R. Billings, V.P.  
Brian R. Billings, Vice President



MAYOR JIM GRAY



**LEXINGTON**

TODD SLATIN  
DIRECTOR  
CENTRAL PURCHASING

**ADDENDUM #2**

**Bid Number: #75-2017**

**Date: June 9, 2017**

**Subject: Brighton Rail Trail Phase 4**

**Address inquiries to:**  
**Sondra Stone**  
**(859) 258-3320**

**TO ALL PROSPECTIVE SUBMITTERS:**

**Please be advised of the following clarifications to the above referenced Bid:**

1. Q: Can we "remove and replace" the tapered curb cut, shown on sheet P5, as opposed to cutting the curb at a taper? A: Yes. You may remove and replace the curb as needed to get the entrance installed.
2. Q: Please clarify/define the "field layout profile" required in note 19 on sheet G1. A: Contractor shall stake centerline prior to breaking ground. If adjustments need to be made in the field, it can be done at this time.
3. Q: Per the pre-bid meeting, where, exactly, is the available dump site for the project? What materials are allowed at the dumpsite? Will erosion control be required at the dumpsite? If required, will contractor be required to maintain erosion control until grass is fully established, (possibly thru winter)? A: The dump site is within the existing LFUCG right of way and is only for the material excavated in the construction of the trail. Only the material excavated will be allowed in the dump area. Erosion control will be required and the site needs to be graded to be flush with surrounding area. The site must have a minimum 6 inches of topsoil and be able to support vegetation. Seeding and strawing the area within 14 days of placing the topsoil shall meet the erosion control requirements, provided grass is growing.





3009 Atkinson Avenue  
Suite 400  
Lexington, Kentucky 40509

2

4. See attached additional drawing.

Todd Slatin, Director  
Division of Central Purchasing

All other terms and conditions of the Bid and specifications are unchanged.

This letter should be signed, attached to and become a part of your Bid.

COMPANY NAME: L-M Asphalt Partners, Ltd. dba ATS Construction

ADDRESS: 3009 Atkinson Avenue, Suite 400, Lexington, Kentucky 40509

SIGNATURE OF BIDDER: Brian R. Billings, V.P.  
Brian R. Billings, Vice President



**APPENDIX "A"**

**STANDARD DRAWINGS**

**(Refer to LFUCG  
Standard Drawings Manual)**

# **APPENDIX “B”**

## **TRAFFIC MANAGEMENT PLAN**

### **TRAFFIC CONTROL B PLAN**

- A. Contractor will provide a Traffic Control Coordinator for the project, listed below:

---

- B. Refer to Standard Traffic Control Plan below for use on this project:

## TRAFFIC CONTROL PLAN

---

### Traffic Control General

1. All signs and control of traffic shall be in accordance with the Manual on Uniform Traffic Control Devices for Streets and Highways, latest edition, Part VI, and safety requirements shall conform with the Kentucky Transportation Cabinet's Permits Manual. Except as provided herein, traffic shall be maintained in accordance with the Current Standard Specifications and the Standard Drawings, current editions. Except for the roadway and traffic control bid items listed, all items of work necessary to maintain and control traffic will be paid at the lump sum bid price to **"Maintain and Control Traffic"**.
2. All work necessary in the shoulder or ditch line areas of the project roadway shall be scheduled to be promptly completed so that hazards adjacent to the traveled way are kept to an absolute minimum. The traveled way and shoulders shall be kept clear of mud and other construction debris at all times during construction of the facility. No non-construction equipment or vehicles or office trailers will be allowed on the right-of-way during working hours.
3. Contrary to Section 106.01 of KYTC Standard Specifications, traffic control devices used on this project may be new or used in like new condition, at the beginning of the work and maintained in like new condition until completion of the work.

### Project Approach

1. The project replaces the sidewalk and curb within designated limits. Construction will begin at one end of the street and advance in a contiguous block-to-block fashion. .
2. The contractor will be allowed to close the adjacent traffic/parking lane in the block(s) under construction. Lane closures will conform to **KYTC Standard Drawing TTC-115-01**.

## **Lane Closures**

1. When necessary, block one (1) Traveled-lane of the project roadway, the normal working hours shall be directed by the Department. All work in residential areas must be performed during normal daylight hours (7:00 A.M. to 6:00 P.M.) No residential area on this project. Typical working hours in commercial areas are from 7:00 A.M. to 7:00 P.M. Lane closures are allowed during hours of 7:00 A.M. to 6:00P.M.
2. The Contractor must maintain alternating one way traffic during construction where applicable. The clear lane width shall be 10 feet (this may include a portion of the adjacent shoulder). If traffic should be stopped due to construction operations, and a school bus or an official run arrives on the scene, the Contractor shall make provision for the passage by as quickly as possible.
3. No explosive devices or explosive material shall be used within state right-of-way without proper license and approval of the Kentucky Department of Mines and Minerals, Explosive Division.
4. No more than one (1) Traveled-lane shall be blocked or obstructed during normal working hours. All signs and flaggers during lane closure shall conform to the Manual on Uniform Traffic Control Devices.
5. No Lanes are to be blocked or obstructed during adverse weather conditions (i.e. rain, snow, fog, etc.) without specific permission from the City.
6. Lane Closures shall be incidental to the bid item "Maintain and Control Traffic"

## **Signs**

1. Contrary to Section 112.04.02, only long term signs (signs intended to be continuously in place for more than 3 days) will be measured for payment; short term signs (signs intended to be left in place for 3 days or less) will not be measured for payment but will be incidental to "Maintain and Control Traffic".



2. Fabrication and installation for "Stimulus Related" signs will be in accordance with the Special Provision for "Stimulus Project Signs". Payment will be per the square yard unit price.

### **Arrow Panel**

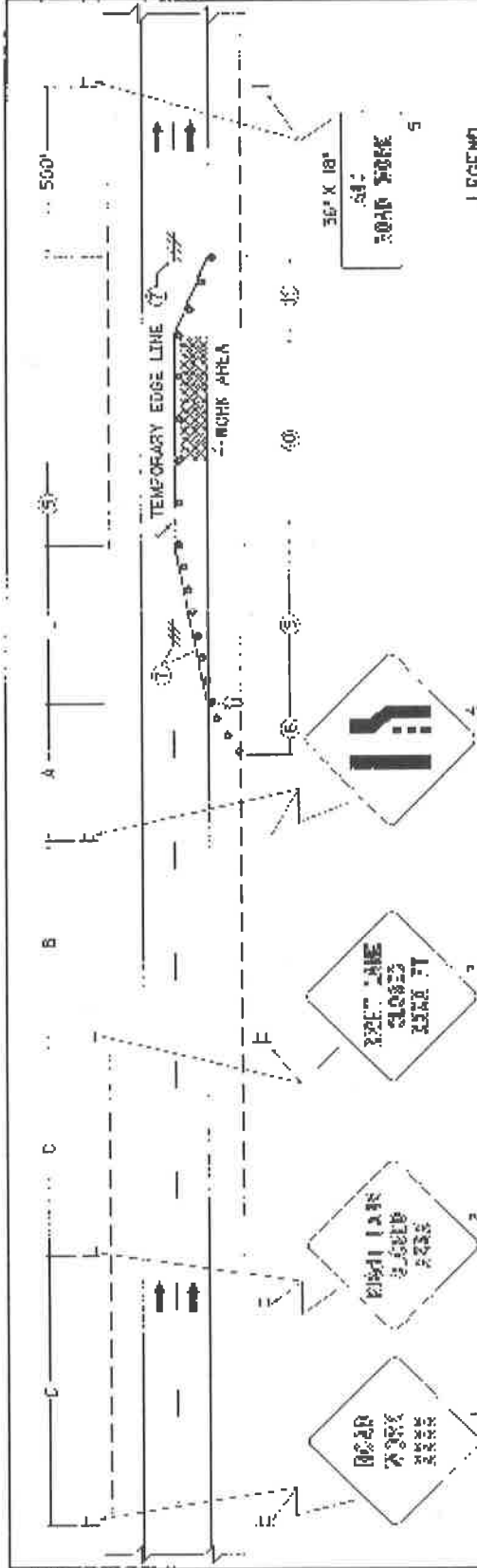
1. Two arrow panels, as required on the referenced standard drawing, have been established for the project. Payment will be made for the maximum number in place at any one time. No payment will be made for more than two units.

### **Barricades**

1. Barricades used in lieu of barrels and cones for channelization or delineation will be incidental to "Maintain and Control Traffic". Barricades used to protect pavement removal areas will be bid as each.
2. Furnish new barricades, place these barricades as directed by the Engineer. The Department will retain these barricades upon completion of the project. It is agreed that payment for the item "Barricade-Type III" shall be considered as full compensation for all equipment, labor, and material necessary to install, store, remove, maintain, and adjust/relocate this item as directed by the engineer.

### **Temporary Entrances**

1. The Contractor will be required to provide reasonable egress and ingress to each property when actual operations are not in progress at that location. The time duration when an entrance is blocked shall be the minimum length of time for actual operations, shall not be extended for the Contractor's convenience, and in no case shall exceed six (6) hours. Notify all businesses 24 hours in advance of any driveway or entrance crossings and make any accommodations necessary to meet the access needs of disabled residents.
2. Except as allowed by the Phasing specified above, maintain direct access to all side streets and roads, and all other businesses along the designated route.



**LEGEND**

- ④ 4" ARROW PANEL
- ⑤ SIGN
- ⑥ CHANNELIZING DEVICES
- CONES
- DRUMS
- TYPE II BARRICADES
- TUBULAR MARKERS

1. IF MEDIAN IS NOT WIDE ENOUGH TO MAINTAIN LATERAL CLEARANCES SHOWN IN MUTCD, SIGNS 1 THROUGH 5 SHALL NOT BE PLACED UNLIMITED.
2. THE SIZE OF SIGNS THROUGH 4 SHALL BE 48" X 48" IF THE NORMAL POSTED SPEED LIMIT IS 45 MPH OR GREATER, OTHERWISE, 36" X 36". SIGNS MAY BE USPP.
3. AN ARROW PANEL SHALL BE LOCATED ON THE SHOULDER AT THE BEGINNING OF THE MERGING TAPER OR LOCATED HORIZONTAL TO THE SHOULDER WHEN THE SHOULDER IS NARROW.
4. ALL VEHICLES, EQUIPMENT, WORKERS, AND TRAFFIC ACTIVITIES SHALL BE RESTRICTED TO ONE SIDE OF THE PAVEMENT UNLESS OTHERWISE AUTHORIZED BY THE ENGINEER.
5. DRUMS OR TYPE II BARRICADES SHALL BE USED IN lieu OF CONES OR TUBULAR MARKERS IF CLOSURE EXTENDS INTO NIGHTTIME HOURS, BUFFER SPACE (OPTIONAL).
6. IF SEPARATION OF LANE CLOSURE EXCEPTS THREE DAYS, TEMPORARY EDGE LINE SHALL BE REQUIRED AND SKIP LINES SHALL BE OBLITERATED BY APPROPRIATE METHOD THROUGH LENGTH OF TAPER. ANY OTHER CONFLICTING PAVEMENT MARKINGS SHALL BE OBLITERATED.
7. IF AN ARROW PANEL IS INSTALLED ON THE SHOULDER, WITHIN THE CLEAR ZONE, A SHOULDER TAPER SHALL BE REQUIRED. WHEN PAVED SHOULDER HAVING A WIDTH OF 8' OR MORE ARE CLOSED, A SHOULDER TAPER SHALL BE REQUIRED. TAPER LENGTH SHALL BE 1:1. SPACING OF CHANNELIZING DEVICES THROUGH SHOULDER TAPER SHOULD BE 40'.
8. SPACING OF CHANNELIZING DEVICES THROUGH THE MERGING TAPER SHOULD BE 40'.
9. SPACING OF CHANNELIZING DEVICES THROUGH THE MERGING DEVICES THROUGH THE DOWNSTREAM TAPER SHOULD BE 80'.
10. SPACING OF CHANNELIZING DEVICES THROUGH THE ACTIVITY AREA SHOULD BE 100'. SPACING OF CHANNELIZING DEVICES THROUGH THE DOWNSTREAM TAPER SHOULD BE 20'.

DRAWING NOT TO SCALE  
 USE WITH CURRENT STD. DWGS.  
 TTC-100 AND TTC-103

CONTRACT NO. \_\_\_\_\_  
 DEPARTMENT OF HIGHWAYS  
**LANE CLOSURE**  
 MULTI-LANE HIGHWAY  
 CASE I  
 STANDARD DRAWING TTC-100-01  
 DATE: \_\_\_\_\_

SIGNING AND SPACING TABLE

ROAD TYPE	A	B	C	D	L
EXPRESSWAY/ FREEWAY	10200'	500'	1500'	2600'	840'
SP. 1, 2, 45 MPH	500'	500'	500'	1100'	530'
SP. 11, 40 MPH	250'	250'	250'	500'	300'

\*METER USE NORMAL POSTED SPEED LIMIT

**APPLICATION**  
 THIS DRAWING APPLIES TO LANE CLOSURES ON LEFT OR RIGHT LANES ON TWO-DIRECTION MULTI-LANE HIGHWAYS. IF TEMPORARY TRAFFIC SIGNALS ARE USED, REFER TO CURRENT STANDARD DRAWING TTC-100.



# APPENDIX “C”

## CONSTRUCTION INSPECTION PLAN

### Construction Inspection Plan

#### *Lexington-Fayette Urban County Government Brighton East Rail Trail Project, Phase 4*

#### **Scope of Work:**

**Lexington-Fayette Urban County Government (LFUCG)** will provide construction observation and administration services for the project.

The following individuals shall be providing construction observation and administrative services for the project:

Keith Lovan, PE – Professional Civil Engineer

**Lexington-Fayette Urban County Government (LFUCG)** will provide the Construction Engineering and construction inspection throughout the project.

The Construction Engineer will be Keith Lovan who is a professional engineer with a diverse experience base in Civil Engineering. Keith has over 33 years of civil engineering specific work, ranging from highway and building structures to utility and storm water design and permitting.

The LFUCG currently employs inspectors for on-site inspection of the construction project, qualified in ACI testing, and also capable of managing the testing of materials. LFUCG requirements for a construction inspector include an associate's degree (or 60 hours of college) in land surveying, drafting, construction, civil engineering, or related field and three years of experience performing professional engineering work relative to the area of assignment.

The construction inspectors are required to have considerable knowledge of:

- materials, methods and techniques of public works construction,
- engineering principals and practices,
- processes, procedures, equipment, EPA regulations and record keeping requirements
- Surveying and drafting instruments and methods
- and mathematics including algebra, geometry and trigonometry.

Other skills related to construction are recommended. Construction inspectors are also certified by KEPSC to conduct erosion and sediment control inspections on all Capital Improvement Projects.

The actual testing of materials will be provided by the following firm:

***Consulting Services Incorporated  
250 Gold Rush Road  
Lexington, KY 40503***

The city inspector shall use inspection instruments and visual inspection to inspect the contractor's work and ensure compliance with all contract provisions, including enforcement of the Kentucky Standard Specifications, Special Notes and Provisions, and the project proposal, and plans. The inspector shall keep complete and accurate daily records of all work performed, preparation of final paperwork, and the materials used in accordance with the Division of Construction Guidance Manual or KYTC current policy.

Construction Inspectors shall use procedures and methods as outlined in the LFUCG Construction Manual. Inspectors will provide daily inspections as required and will maintain records necessary to insure an acceptable project.

**Special Instructions:**

The city inspector will provide daily inspections as required to review demolition, excavations, and installation of formwork for preparation of the sidewalk construction. Additionally, records will be kept to identify temperature, weather conditions, crews provided by the contractor, as well as equipment.

The city inspector will supervise the testing firm providing testing of the concrete poured for sidewalk installation for every 100 yards of concrete poured, and at a minimum once daily when pouring concrete. Slump and air testing will be provided, along with storing of 4-concrete cylinders to determine 7-day and 28-day compressive strengths. Testing of cylinders will be provided at the testing lab at random to determine if compressive strengths are acceptable by the firm listed above.

All reports of inspections and testing will be provided to LFUCG and KYTC as required. Additionally, a *Final Completion Inspection* will be coordinated with KYTC District 7 personnel.

# LPA DOCUMENTS

## 1. FEDERAL CONTRACT NOTES

### A. BID OPENING

Sealed bids will be accepted in accordance with the instructions detailed in section 1.0. The bid opening is open to the public. The Bidder shall file all documents necessary to support its bid and include them with its bid. Bidders shall be responsible for the actual delivery of bids during business hours to the address indicated in the cover letter. It shall not be sufficient to show that the bid was mailed in time to be received before scheduled closing time for receipt of bids.

Failure by a bidder to comply with all applicable sections and guidelines of the current Kentucky Standard Specifications for Road & Bridge Construction 2012 (, including, but not limited to the following), may result in a bid not being considered responsive and thus not eligible to be considered for an award:

- 102.10 Delivery of Proposals
- 102.08 Irregular Proposals
- 102.14 Disqualification of Bidders
- 102.09 Proposal Guaranty

Additionally, LFUCG, in accordance with the Regulations of the United States Department of Transportation 23 CFR 635.112 (h), hereby notifies all bidders that failure by a bidder to comply with the following may result in a bid not being considered responsive and thus not eligible to be considered for award.

Prior to the project being awarded, LFUCG will verify that the contractor is not listed on an "Excluded Party List" (suspended or debarred) at <http://www.sam.gov>.

### B. PUBLIC WORKS ACT

Wage and Hour Acts. In performing the work, the Contractor and Subcontractors are required to comply with the wage and hour requirements prescribed by KRS 337.505- 337.550.

Payment. The Contractor and Subcontractor shall pay all laborers, workmen and mechanics performing work under this contract not less than the wages set forth in the prevailing wage schedule, incorporated as part of the Bid and Contract Documents, as determined by the Kentucky Department of Labor in accordance with provisions of KRS 337.505 through KRS 337.550 for projects with a total cost exceeding \$250,000. The designated wage rates represent minimum allowable rates of pay and shall not be construed to mean that higher rates may not have to be paid in order to secure labor. Thus, differences between designated wage rates and actual wage rates shall not be an appropriate basis for adjustment of the contract sum.

Prevailing Wage Rates. The current version of the applicable prevailing wage rates have been issued with this Bid Document. The prevailing wage rates, set forth in the wage determination, are determined by the Kentucky Department of Labor in accordance with provisions contained in KRS 337.505 through KRS 337.550. Any Contractor or Subcontractor found to be in violation of any provisions of KRS 337.505 to 337.550 by the Commissioner of the Department of Labor and upon notification to the Vice President for Administrative Services Fiscal Affairs and the Secretary of the Finance and Administration Cabinet, the Secretary of the Finance and Administration Cabinet shall declare the offending Contractor ineligible to bid on public works until such time the Contractor is in substantial compliance as determined by the Commissioner of Labor.

### **C. CIVIL RIGHTS ACT OF 1964**

LFUCG, in accordance with the provisions of Title VI of the Civil Rights Act of 1964 (78 Stat. 252) and the Regulations of the Federal Department of Transportation (49 C.F.R., Part 21), issued pursuant to such Act, hereby notifies all bidders that it will affirmatively insure that the contract entered into pursuant to this advertisement will be awarded to the lowest responsible bidder without discrimination on the ground of race, color, or national origin.

### **D. BUY AMERICA STIPULATION (23CFR635.410)**

None of the funds appropriated or otherwise made available by this Act may be used for a project for the construction, alteration, maintenance, or repair of a public building or public work unless all of the iron, steel, and manufactured goods used in the project are produced in the United States.

### **E. NOTICE TO ALL BIDDERS OF BID RIGGING**

To report bid rigging activities call: 1-800-424-9071.

The U.S. Department of Transportation (DOT) operates the above toll-free "hotline" Monday through Friday, 8:00 a.m. to 5:00 p.m. eastern time. Anyone with knowledge of possible bid rigging, bidder collusion, or other fraudulent activities should use the "hotline" to report such activities.

The "hotline" is part of the DOT's continuing effort to identify and investigate highway construction contract fraud and abuse and is operated under the direction of the DOT Inspector General. All information will be treated confidentially and caller anonymity will be respected.

***LFUCG and Bidder shall comply with Title VI of the Civil Rights Act of 1964 (42 U.S.C. § 2000d et. seq.) and all implementing regulations and executive orders, and Section 504 of the Rehabilitation Act of 1973 (29 U.S.C. § 701) and the Kentucky Equal Employment Act 1978 (K.R.S. § 45.550 to 45.640) and the Americans with Disabilities Act (42 U.S.C. § 12101 et. seq.). No person shall be excluded from participation in, be denied the benefits of, or be subject to discrimination in relation to activities carried out under this bid or any contracting resulting from it on the basis of race, color, age, religion, sex, disability, or national origin. This includes provision of language assistance services to individuals of limited English proficiency seeking and/or eligible for services under this bid or resulting Contract.***



**F. NOTICE OF REQUIREMENT OF AFFIRMATIVE ACTION**

**KENTUCKY TRANSPORTATION CABINET  
DEPARTMENT OF HIGHWAYS  
EMPLOYMENT REQUIREMENTS  
RELATING TO  
NONDISCRIMINATION OF EMPLOYEES  
(APPLICABLE TO FEDERAL-AID SYSTEM CONTRACTS)**

**AN ACT OF THE KENTUCKY GENERAL ASSEMBLY  
TO PREVENT DISCRIMINATION IN EMPLOYMENT  
KRS CHAPTER 344  
EFFECTIVE JUNE 16, 1972**

The contract on this project, in accordance with KRS Chapter 344, provides that during the performance of this contract, the contractor agrees as follows:

1. The contractor shall not fail or refuse to hire, or shall not discharge any individual, or otherwise discriminate against an individual with respect to his compensation, terms, conditions, or privileges of employment, because of such individual's race, color, religion, national origin, sex, disability or age (between forty and seventy); or limit, segregate, or classify his employees in any way which would deprive or tend to deprive an individual of employment opportunities or otherwise adversely affect his status as an employee, because of such individual's race, color, religion, national origin, sex, disability or age (between forty and seventy). The contractor agrees to post in conspicuous places, available to employees and applicants for employment, notices to be provided setting forth the provisions of this nondiscrimination clause.
2. The contractor shall not print or publish or cause to be printed or published a notice or advertisement relating to employment by such an employer or membership in or any classification or referral for employment by the employment agency, indicating any preference, limitation, specification, or discrimination, based on race, color, religion, national origin, sex, disability or age (between forty and seventy), except that such notice or advertisement may indicate a preference, limitation, or specification based on religion, or national origin when religion, or national origin is a bona fide occupational qualification for employment.
3. If the contractor is in control of apprenticeship or other training or retraining, including on-the-job training programs, he shall not discriminate against an individual because of his race, color, religion, national origin, sex, disability or age (between forty and seventy), in admission to, or employment in any program established to provide apprenticeship or other training.

4. The contractor will send to each labor union or representative of workers with which he has a collective bargaining agreement or other contract or understanding, a notice to be provided advising the said labor union or workers' representative of the contractor's commitments under this section, and shall post copies of the notice in conspicuous places available to employees and applicants for employment. The contractor will take such action with respect to any subcontract or purchase order as the administrating agency may direct as a means of enforcing such provisions, including sanctions for non-compliance.

**G. NOTICE OF REQUIREMENT FOR AFFIRMATIVE ACTION  
TO ENSURE EQUAL EMPLOYMENT OPPORTUNITY  
(Executive Order 11246)**

1. The Offeror's or Bidder's attention is called to the "Equal Opportunity Clause" and the "Standard Federal Equal Employment Specifications" set forth herein.
2. The goals and timetables for minority and female participation, expressed in percentage terms for the Contractor's aggregate work force in each trade on all construction work in the covered area, are as follows:

<b>GOALS FOR MINORITY PARTICIPATION IN EACH TRADE</b>	<b>GOALS FOR FEMALE PARTICIPATION IN EACH TRADE</b>
10.8%	6.9%

These goals are applicable to all the Contractor's construction work (whether or not it is Federal or federally-assisted) performed in the covered area. If the contractor performs construction work in a geographical area located outside of the covered area, it shall apply the goals established for such geographical area where the work is actually performed. With regard to this second area, the contractor also is subject to the goals for both its federally involved and non-federally involved construction.

The Contractor's compliance with the Executive Order and the regulations in CFR Part 60-4 shall be based on its implementation of the Equal Opportunity Clause, specific affirmative action obligations required by the specifications set forth in 41 CFR 60-4, 3(a), and its efforts to meet the goals. The hours of minority and female employment and training must be substantially uniform throughout the length of the contract, and in each trade, and the contractor shall make a good faith effort to employ minorities and women evenly on each of its projects. The transfer of minority or female employees or trainees from Contractor to Contractor or from project to project for the sole purpose of meeting the Contractor's goals shall be a violation of the contract, the Executive Order and the regulations in 41 CFR Part 60-4. Compliance with the goals will be measured against the total work hours performed.

3. The Contractor shall provide written notification to the Director of the Office of Federal Contract Compliance Programs within ten (10) working days of award of any construction subcontract in excess of \$10,000.00 at any tier for construction work under the contract resulting from this solicitation. The notification shall list the name, address and telephone number of the subcontractor; employer identification number of the subcontractor; estimated dollar amount of the subcontract; estimated starting and completion dates of the subcontract; and the geographical area in which the subcontract is to be performed. The notification shall be mailed to:

**Evelyn Teague, Regional Director  
Office of Federal Contract Compliance Programs  
61 Forsyth Street, SW, Suite 7B75  
Atlanta, Georgia 30303-8609**

4. As used in this Notice, and in the contract resulting from this solicitation, the **"covered area"** is Fayette County.

## **DBE PROVISIONS (KYTC DOCUMENTS)**

### **H. DISADVANTAGED BUSINESS ENTERPRISE PROGRAM**

It is the policy of LEXINGTON-FAYETTE URBAN COUNTY GOVERNMENT (“LFUCG”) that Disadvantaged Business Enterprises (“DBE”) shall have the opportunity to participate in the performance of highway construction projects financed in whole or in part by Federal Funds in order to create a level playing field for all businesses who wish to contract with LFUCG. To that end, LFUCG will comply with the regulations found in 49 CFR Part 26, and the definitions and requirements contained therein shall be adopted as if set out verbatim herein.

LFUCG, contractors, subcontractors, and sub-recipients shall not discriminate on the basis of race, color, national origin, or sex in the performance of work performed pursuant to LFUCG contracts. The contractor shall carry out applicable requirements of 49 CFR 26 in the award and administration of federally assisted highway construction projects. The contractor will include this provision in all its subcontracts and supply agreements pertaining to contracts with LFUCG.

Failure by the contractor to carry out these requirements is a material breach of its contract with LFUCG, which may result in the termination of the contract or such other remedy as LFUCG deems necessary.

#### **DBE GOAL**

The Disadvantaged Business Enterprise (DBE) goal established for this contract, as listed in the Information for Bidders Part II, is the percentage of the total value of the contract. The contractor shall exercise all necessary and reasonable steps to ensure that Disadvantaged Business Enterprises participate in at least the percent of the contract as set forth above as goals for this contract.

#### **OBLIGATION OF CONTRACTORS**

Each contractor prequalified to perform work on LFUCG projects shall designate and make known to LFUCG a liaison officer who is assigned the responsibility of effectively administering and promoting an active program for utilization of DBEs. If a formal goal has not been designated for the contract, all contractors are encouraged to consider DBEs for subcontract work as well as for the supply of material and services needed to perform this work.

Contractors are encouraged to use the services of banks owned and controlled by minorities and women.

#### **CERTIFICATION OF CONTRACT GOAL**

Contractors shall include the following certification in bids for projects for which a DBE goal has been established. BIDS SUBMITTED WHICH DO NOT INCLUDE CERTIFICATION OF DBE PARTICIPATION WILL NOT BE READ PUBLICLY. These bids will not be considered for award by LFUCG and they will be returned to the bidder.

“The bidder certifies that it has secured participation by Disadvantaged Business Enterprises (“DBE”) in the amount of \_\_\_\_\_ the total value of this contract and that the DBE participation is in compliance with the requirements of 49 CFR 26 and the policies of the Kentucky Transportation Cabinet pertaining to the DBE Program.”

**The certification statement is located in the printed bid packet. All contractors must certify their DBE participation on that page. DBEs utilized in achieving the DBE goal must be certified and prequalified for the work items at the time the bid is submitted**

### **SECOND TIER SUBCONTRACTS**

Second Tier subcontracts on federally assisted projects shall be permitted. However, in the case of DBE’s, second tier subcontracts will only be permitted where the other subcontractor is also a DBE. All second tier subcontracts shall have the consent of both the Contractor and the Engineer.

### **DBE PARTICIPATION PLAN**

All bidders are encouraged to submit their General DBE Participation Plan with their bid on the official form. Lowest responsive bidders whose bid packages include DBE Participation Plans may be awarded the contract at the next Awards Committee meeting provided that the DBE goal is met. The DBE Participation Plan shall include the following:

1. Name and address of DBE Subcontractor(s) and/or supplier(s) intended to be used in the proposed project;
2. Description of the work each is to perform including the work item , unit, quantity, unit price and total amount of the work to be performed by the individual DBE;
3. The dollar value of each proposed DBE subcontract and the percentage of total project contract value this represents. DBE participation may be counted as follows;
  - a) If DBE suppliers and manufactures assume actual and contractual responsibility, the dollar value of materials to be furnished will be counted toward the goal as follows:
    - The entire expenditure paid to a DBE manufacturer;
    - 60 percent of expenditures to DBE suppliers that are not manufacturers provided the supplier is a regular dealer in the product involved. A regular dealer must be engaged in, as its principal business and in its own name, the sale of products to the public, maintain an inventory and own and operate distribution equipment; and
    - the amount of fees or commissions charged by the DBE firms for a bona fide service, such as professional, technical, consultant, or managerial services and assistance in the procurement of essential personnel, facilities, equipment, materials, supplies, delivery of materials and supplies or for furnishing bonds, or insurance, providing such fees or commissions are determined to be reasonable and customary.

- b) The dollar value of services provided by DBEs such as quality control testing, equipment repair and maintenance, engineering, staking, etc.;
- c) The dollar value of joint ventures. DBE credit for joint ventures will be limited to the dollar amount of the work actually performed by the DBE in the joint venture;
- 4. Written and signed documentation of the bidder's commitment to use a DBE contractor whose participation is being utilized to meet the DBE goal; and
- 5. Written and signed confirmation from the DBE that it is participating in the contract as provided in the prime contractor's commitment.

The apparent low bidder who does not submit a General DBE Participation Plan with the bid within 10 calendar days after receipt of notification that they are the apparent low bidder. The project will not be considered for award prior to submission and approval of the apparent low bidder's DBE Participation Plan.

Detailed DBE Participation Plan forms will be included in the Contractor Package presented to successful bidders following the awarding of the project. The Detailed DBE Participation Plan must be completed and returned to Contract Procurement in accordance with Cabinet policy. A copy of the blank estimate will be included with the Detailed DBE Participation Plan to list sequence items by PCN (Project Control Number).

Changes to DBE Participation Plans must be approved by LFUCG. LFUCG may consider extenuating circumstances including, but not limited to, changes in the nature or scope of the project, the inability or unwillingness of a DBE to perform the work in accordance with the bid, and/or other circumstances beyond the control of the prime contractor.

### **CONSIDERATION OF GOOD FAITH EFFORT REQUESTS**

If the DBE participation submitted in the bid by the apparent lowest responsive bidder does not meet or exceed the DBE contract goal, the apparent lowest responsive bidder must submit a Good Faith Effort Package to satisfy LFUCG that sufficient good faith efforts were made to meet the contract goals prior to submission of the bid. Efforts to increase the goal after bid submission will not be considered in justifying the good faith effort, unless the contractor can show that the proposed DBE was solicited prior to the letting date. DBEs utilized in achieving the DBE goal must be certified and prequalified for the work items at the time the bid is submitted. One complete set and nine (9) copies of this information must be received by LFUCG no later than 12:00 noon of the tenth calendar day after receipt of notification that they are the apparent low bidder.

Where the information submitted includes repetitious solicitation letters it will be acceptable to submit a sample representative letter along with a distribution list of the firms solicited. Documentation of DBE quotations shall be a part of the good faith effort submittal as necessary to demonstrate compliance with the factors listed below which LFUCG considers in judging good faith efforts. This documentation may include written subcontractors' quotations, telephone log notations of verbal quotations, or other types of quotation documentation.

The Good Faith Effort Package shall include, but may not be limited to information showing evidence of the following:

1. Whether the bidder attended any pre-bid meetings that were scheduled by LFUCG to inform DBEs of subcontracting opportunities;
2. Whether the bidder provided solicitations through all reasonable and available means;
3. Whether the bidder provided written notice to all DBEs listed in the DBE directory at the time of the letting who are prequalified in the areas of work that the bidder will be subcontracting;
4. Whether the bidder followed up initial solicitations of interest by contacting DBEs to determine with certainty whether they were interested. If a reasonable amount of DBEs within the targeted districts do not provide an intent to quote or no DBEs are prequalified in the subcontracted areas, the bidder must notify the DBE Liaison in the Office of Minority Affairs to give notification of the bidder's inability to get DBE quotes;
5. Whether the bidder selected portions of the work to be performed by DBEs in order to increase the likelihood of meeting the contract goals. This includes, where appropriate, breaking out contract work items into economically feasible units to facilitate DBE participation, even when the prime contractor might otherwise perform these work items with its own forces;
6. Whether the bidder provided interested DBEs with adequate and timely information about the plans, specifications, and requirements of the contract;
7. Whether the bidder negotiated in good faith with interested DBEs not rejecting them as unqualified without sound reasons based on a thorough investigation of their capabilities. Any rejection should be so noted in writing with a description as to why an agreement could not be reached;
8. Whether quotations were received from interested DBE firms but were rejected as unacceptable without sound reasons why the quotations were considered unacceptable. The fact that the DBE firm's quotation for the work is not the lowest quotation received will not in itself be considered as a sound reason for rejecting the quotation as unacceptable. The fact that the bidder has the ability and/or desire to perform the contract work with its own forces will not be considered a sound reason for rejecting a DBE quote. Nothing in this provision shall be construed to require the bidder to accept unreasonable quotes in order to satisfy DBE goals;
9. Whether the bidder specifically negotiated with subcontractors to assume part of the responsibility to meet the contract DBE goal when the work to be subcontracted includes potential DBE participation;
10. Whether the bidder made any efforts and/or offered assistance to interested DBEs in obtaining the necessary equipment, supplies, materials, insurance and/or bonding to satisfy the work requirements of the bid proposal; and
11. Any other evidence that the bidder submits which may show that the bidder has made reasonable good faith efforts to include DBE participation.

#### **FAILURE TO MEET GOOD FAITH REQUIREMENT**

Where the apparent lowest responsive bidder fails to submit sufficient participation by DBE firms to meet the contract goal and upon a determination by the Good Faith Committee based upon the information submitted that the apparent lowest responsive bidder failed to make sufficient reasonable efforts to meet the contract



goal, the bidder will be offered the opportunity to meet in person for administrative reconsideration. The bidder will be notified of the Committee's decision within 24 hours of its decision. The bidder will have 24 hours to request reconsideration of the Committee's decision. The reconsideration meeting will be held within two days of the receipt of a request by the bidder for reconsideration.

The request for reconsideration will be heard by LFUCG. The bidder will have the opportunity to present written documentation or argument concerning the issue of whether it met the goal or made an adequate good faith effort. The bidder will receive a written decision on the reconsideration explaining the basis for the finding that the bidder did or did not meet the goal or made adequate Good Faith efforts to do so.

The result of the reconsideration process is not administratively appealable to LFUCG or to the United States Department of Transportation.

LFUCG reserves the right to award the contract to the next lowest responsive bidder or to rebid the contract in the event that the contract is not awarded to the low bidder as the result of a failure to meet the good faith requirement.

#### **SANCTIONS FOR FAILURE TO MEET DBE REQUIREMENTS OF THE PROJECT**

Failure by the prime contractor to fulfill the DBE requirements of a project under contract or to demonstrate good faith efforts to meet the goal constitutes a breach of contract. When this occurs, LFUCG will hold the prime contractor accountable, as would be the case with all other contract provisions. Therefore, the contractor's failure to carry out the DBE contract requirements shall constitute a breach of contract and as such LFUCG reserves the right to exercise all administrative remedies at its disposal including, but not limited to the following:

- Disallow credit toward the DBE goal;
- Withholding progress payments;
- Withholding payment to the prime in an amount equal to the unmet portion of the contract goal; and/or
- Termination of the contract.

#### **PROMPT PAYMENT**

The prime contractor will be required to pay the DBE within seven (7) working days after he or she has received payment from LFUCG for work performed or materials furnished.

#### **CONTRACTOR REPORTING**

All contractors must keep detailed records and provide monthly reports to LFUCG on their progress in meeting the DBE requirement on any contract. These records may include, but shall not be limited to payroll, lease agreements, cancelled payroll checks, executed subcontracting agreements, etc. Prime contractors will be required to submit certified reports on monies paid to each DBE subcontractor or supplier utilized to meet a DBE goal. LFUCG also as official forms that must be completed by the contractor and submitted by the 3<sup>rd</sup> of each month.

Prime contractors will incorporate a requirement into DBE subcontracts, including supply contracts that DBEs must provide to LFUCG, a copy of all checks received from the prime contractor within seven days of receipt of payment for work performed on Cabinet projects. Checks to DBE subcontractors must include the PCN number, estimate number, and the sequence and quantity.

**DEFAULT OR DECERTIFICATION OF THE DBE**

If the DBE subcontractor or supplier is decertified or defaults in the performance of its work, and the overall goal cannot be credited for the uncompleted work, the prime contractor may utilize a substitute DBE or elect to fulfill the DBE goal with another DBE on a different work item. If after exerting good faith effort in accordance with LFUCG's Good Faith Effort policies and procedures, the prime contractor is unable to replace the DBE, then the unmet portion of the goal may be waived at the discretion of LFUCG.

**2. LPA Change Order Form**

Please use the attached Project LPA Change Order form as required:

**KENTUCKY TRANSPORTATION CABINET**

ipa-chgord Mod 07/2/10
---------------------------

**Local Public Agency  
CHANGE ORDER**

Page  
Contract ID  
Change Order No  
Contractor  
Contractor  
Address

Project Sponsor  
County  
Project Number  
Project Name

*Proposed Changes in Connection with Contract Items:*

Item No.	Description	Quantity	Unit	Unit Price	Amount

*Total for this Page*  
*Total for Continuation Page(s)*  
*Total Contract Items*

*Proposed Items of Supplemental Agreement:*

Ref. No.	Description	Quantity	Unit	Unit Price	Amount

Time Extension/Explanation:

--

*Total for this Page*  
*Total for Continuation Page(s)*  
*Total Supplemental Agreement*

***Total Amount***

Reasons for Proposed Changes:



# **APPENDIX "D"**

## **Miscellaneous Attachments**

ATTACHMENT " A "

Equipment	Manufacturer	Model	ModelYr	VINNumber	Description
01.LT6103	CHEVROLET		2002	1GCGC3M42Z118456	2002 CHEVY PICKUP
01.LT6106	CHEVROLET		2003	1GCGC3M41J2226854	CHEVY 2500 4X2 FLATBED
01.LT6107	CHEVROLET		2004	3GCEC19T941148992	CHEVY 1500 4X2 EXT CAB
01.LT6117	FORD		2006	1FTYR10D66PA72841	FORD RANGER 4X2
01.LT6123	CHEVROLET		2007	1GCHC29UX7E190451	CHEVY 2500 4X2 EXT CAB
01.LT6124	CHEVROLET		2007	1GCHC29U77E195524	CHEVY 2500 4X2 EXT CAB
01.LT6125	FORD		2007	1FTRF12267NA48173	FORD F150 4X2
01.LT6126	FORD		2007	1FTYR10U77PA23200	FORD RANGER
01.LT6127	FORD		2007	1FTPX14V77FB26324	FORD F150 4X4 EXT CAB
01.LT6130	FORD		2007	1FTPX12V47FAJ33213	FORD F150 EXT CAB
01.LT6131	FORD		2007	1FTPX12V17KCB8120	FORD F150 EXT CAB
01.LT6132	CHEVROLET		2008	1GCEK190X82203486	CHEVY 1500 4X4 EXT CAB
01.LT6133	TOYOTA	TUNDRA	2013	5TFDW5F14DX274182	TOYOTA TUNDRA CREWMAX 4X4 PICKUP
01.LT6134	FORD	F-250	2015	1FT7X2A63FEA47169	2015 FORD F-250 2 WHEEL-DRIVE
01.LT6135	FORD	F-250	2015	1FT7X2A63FEA47170	2015 FORD F-250 2 WHEEL-DRIVE
01.LT6136	GMC	SIERRA C15	2011	1GNT1TEK4BZ246283	2011 GMC SIERRA C15
01.LT6137	CHEVROLET	SILVERADO	2015	1GCVKPEC9FZ199663	2015 CHEVY SILVERADO
01.LT6138	CHEVROLET	2500 HD	2015	1GC2CUEG0FZ121158	2015 CHEVROLET 2500 HD 4X2
01.LT6139	FORD	F150	2015	1FTEW1EG9FA92321	2015 FORD F150
01.LT6140	CHEVROLET	2500HD	2015	1GC2CUEG9FZ27889	2015 CHEVROLET SILVERADO 2500HD 4X2
01.LT6141	CHEVROLET	2500HD	2016	1GC2KUEG7GZ143601	2016 CHEVY SILVERADO 2500HD
01.LT6142	CHEVROLET	2500 HD	2016	1GC2KUEG3GZ205897	2016 CHEVROLET 2500 HD PICKUP
01.LT6143	CHEVROLET	2500HD	2016	1GC2KUEG9GZ235373	2016 CHEVY 2500 HD
01.LT6144	CHEVROLET	2500HD	2016	1GC2KUEG8GZ236630	2016 CHEVY 2500 HD
01.LT6207	TOYOTA	4RUNNER	2013	JTEBUSJR7D9125315	2013 TOYOTA 4RUNNER
01.LT6208	TOYOTA	HIGHLANDER	2015	5TDZKRPH8F8094878	2015 TOYOTA HIGHLANDER
01.LT7101	CHEVROLET		2008	1GCEK19Y28Z112341	2008 Chevy
01.LT7102	FORD		2010	1FMEUSBE4AUF04119	2010 Ford
01.LT7103	GMC	DURAMAX	2007	1GTRK23687F518304	2007 GMC DURAMAX
01.LT7104	CHEVROLET		2005	1GCEC14V15Z103049	2005 CHEVY
01.LT7105	CHEVROLET		2007	1GCEK19B17Z184557	2007 CHEVY
01.LT7108	GMC		2008	1GTRK29K08E166286	2008 GMC
01.LT7109	CHEVROLET		2007	1GCEK19Y37Z181119	2007 CHEVY
01.LT7110	FORD	F-250	2014	1FT7W2B68EB50149	2014 FORD F-250
01.LT7111	CHEVROLET		2015	1GC1KUEG0FF185488	2015 CHEVY PICKUP
01.LT7112	CHEVROLET		2015	1GC2KUEG2FZ140085	2015 CHEVY PICKUP
01.LT7113	CHEVROLET	SILVERADO	2013	1GCRKSE71DZ283643	2013 CHEVY SILVERADO
01.LT7114	CHEVROLET		2011	3GCPKSE34BG242991	2011 CHEVY
01.LT7115	CHEVROLET	1500	2004	1GCEK19T34Z395714	2004 CHEVY 1500
01.LT7116	CHEVROLET		2003	1GCHK24U39E219261	2003 CHEVY
01.LT7117	CHEVROLET		2007	1GCHK23G87F153065	2007 CHEVY
01.LT7118	CHEVROLET		2015	1GC1KVEG0FF572693	2015 CHEVY PICKUP
01.LT7230	CHEVROLET	TAHOE	2015	1GNSKBKC8FR725802	2015 CHEVROLET TAHOE
01.LT8103	FORD		2007	1FTPW14V17FA47898	FORD F150 (FROM TERMINAL)
01.LT8108	TOYOTA		2010	5TFUW5F12AX1113401	TOYOTA TUNDRA 4X4 EXT CAB
01.LT8109	TOYOTA		2010	5TFUW5F1JAX118663	TOYOTA TUNDRA 4X4 EXT CAB
01.LT8113	FORD		2008	1FTNF21508EE35304	FORD F250 4X4

ATTACHMENT " A "

Equipment	Manufacturer	Model	Model Yr	VIN Number	Description
01.LT8117	CHEVROLET		2008	1GCC8149988153326	CHEVY COLORADO
01.LT8118	CHEVROLET		2008	1GCC8149888133126	CHEVY COLORADO
01.LT8130	CHEVROLET		2012	1GC1KVC99CF191263	CHEVROLET 2500 4X4
01.LT8131	CHEVROLET	SILVERADO	2012	1GC1KVC98CZ373213	CHEVROLET SILVERADO EXT
01.LT8132	CHEVROLET		2012	1GC1KVC98CZ37772	CHEVROLET 2500 4X4 EXT CAB
01.LT8133	CHEVROLET	SILVERADO	2012	1GC1KVC9JBF266290	CHEVROLET SILVERADO CREW
01.LT8134	TOYOTA	TUNDRA	2013	5TFDW5F140X274019	2013 TOYOTA TUNDRA CREW MAX 4X4 PICKUP TRUCK
01.LT8135	CHEVROLET	2500	2013	1GC1KVC9KDF165657	2013 CHEVY 2500 CREW CAB
01.LT8136	TOYOTA	CREW MAX	2013	5TFDW5F13DX286995	2013 TOYOTA TUNDRA CREW MAX 4X4 PICKUP
01.LT8137	TOYOTA	DOUBLE CAB	2013	5TFUW5F19DX287901	2013 TOYOTA TUNDRA DOUBLE CAB 4X4 PICKUP
01.LT8138	CHEVROLET	CK20753	2013	1GC1KVC93DZ304005	2013 CHEVROLET SURVEY TRUCK
01.LT8139	CHEVROLET	CK20953	2013	1GC1KVC93DZ395412	2013 CHEVROLET CONCRETE CREW TRUCK
01.LT8140	CHEVROLET	2500	2015	1GC1KUEG3FZ130407	2015 CHEVY SILVERADO
01.LT8141	FORD		1998	1FTNF20F7XEB99971	FORD F250 STEAM TRUCK
01.LT8142	CHEVROLET	2500HD	2015	1GC1KUEG9FZ237961	2015 CHEVROLET SILVERADO 2500HD 4WD
01.LT8148	FORD		1999	1FTNF21F4XE19579	FORD F250 4X4
01.LT8149	CHEVROLET	SILVERADO	2008	2GCEC19J8B1242968	CHEVROLET SILVERADO
01.LT8150	CHEVROLET	2500HD	2015	1GC1KUEG0FZ336838	2015 CHEVROLET 2500 HD
01.LT8151	CHEVROLET	2500HD	2015	1GC1KUEG4FZ337488	2015 CHEVROLET 2500 HD
01.LT8152	CHEVROLET	2500HD	2015	1GC1KUEG9FZ337521	2015 CHEVROLET 2500 HD
01.LT8163	FORD		2002	1FTNF21FX3EC83113	FORD F250 4X4 FLAT BED
01.LT8174	FORD		2004	1FTNX30PMED31179	FORD F250 4X4
01.LT8177	CHEVROLET		2006	1GCHK23D76F140625	CHEVY 2500 4X4
01.LT8178	CHEVROLET		2006	1GCDT196668198129	CHEVY COLORADO
01.LT8179	CHEVROLET		2006	1GCHC39D16E171064	CHEVY SILVERADO
01.LT8182	CHEVROLET		2006	1GCHK24638E143764	CHEVY 2500 4X4
01.LT8183	CHEVROLET		2008	1GCHK34638E149382	CHEVY 3500 4X4 FLATBED
01.LT8185	CHEVROLET		2006	1GCDT196168223955	CHEVY COLORADO
01.LT8186	CHEVROLET		2006	1GCHK24D56E208246	CHEVY 2500
01.LT8188	CHEVROLET		2006	3GCEC14X36G194393	CHEVY SILVERADO 4X2
01.LT8189	CHEVROLET		2005	1GCJK33283FM1496	CHEVY SILVERADO FLATBED
01.LT8191	CHEVROLET		2006	1GCJK33D16F227272	CHEVY 3500 4X4 FLATBED
01.LT8193	CHEVROLET		2007	1GCHK24D27E117517	2007 CHEVROLET 2500 4X4
01.LT8194	CHEVROLET	SINGLE CAB 2500	2007	1GCHK24D87E144155	CHEVY 2500 4X4
01.LT8196	CHEVROLET		2007	1GCHK29687E550351	CHEVY 2500 4X4
01.LT8197	CHEVROLET		2007	1GCHC24K37E592850	CHEVY 2500 4X4 PICKUP TRUCK
01.LT8198	CHEVROLET		2007	1GCHC29K97E560328	CHEVY 2500 4X4
01.LT8214	FORD	E350	2006	1FBS831L06DA77261	2006 FORD E350 PASSENGER VAN SILVER
01.LT8220	TOYOTA		2008	JTEBU14R400132097	TOYOTA 4RUNNER
01.LT8223	CHEVROLET		2008	1GCJK3361BF146691	CHEVY CK30943 FLATBED 4 DOOR
01.LT8225	TOYOTA		2009	JTEBU14R49K038890	TOYOTA SR5 4RUNNER
01.LT8227	CHEVROLET	LT 1500	2010	1GNUKAE02AR170715	CHEVY TAHOE 4X4
01.LT8230	CHEVROLET	TAHOE LT	2013	1GNSKBEOXDR359713	CHEVROLET TAHOE
01.LT8231	CHEVROLET	TAHOE	2014	1GNSKBEO2ER216174	CHEVROLET TAHOE
01.LT8232	CHEVROLET	TAHOE	2015	1GNSKCKC5FR275497	2015 CHEVY TAHOE
01.PV1143	FORD	F-350	2008	1FDWF36528EA71143	2008 FORD F-350
01.PV8140	FORD	F250	2002	1FDNF21L72EC58140	2002 FORD F250
01.PV8427	FORD	F350	2007	1FDWF36587EA58427	2007 FORD F-350



ATTACHMENT " A "

Equipment	Manufacturer	Model	ModelYr	VINNumber	Description
01.TK6211	FORD		1999	JFDWF36FBKMA19503	FORD F350 DUMP TRUCK
01.TK6212	CHEVROLET		1999	1GBJK3446KF074375	CHEVY 3500 FLATBED
01.TK6213	FORD		2006	1FDAF56P66ED92253	FORD F350 4X2 FLATBED
01.TK6214	FORD	F450	2008	1FDXX46R38EA56670	FORD F450 CREW TRUCK
01.TK6215	FORD	F-350	2015	1FD0XHT0PEC37107	2015 FORD F-350 CREW TRUCK
01.TK6290	CHEVROLET		2003	1GBEJE1183F306607	CHEVY C3500 MECHANIC TRUCK
01.TK7214	FORD	F350	2008	1FDAF56R78EA76458	2008 FORD F350 FLATBED
01.TK7215	FORD	F350	2004	1FDWF36LJ4EA42341	2004 FORD F350
01.TK7216	DODGE	RAM	2007	3D6WR46A37GM01760	2007 Dodge Ram Pickup
01.TK7217	DODGE	RAM	2013	3C7WRMBL2DGS20123	2013 DODGE RAM PARTS RUNNER
01.TK7218	FORD	F600	2002	JFDWF65B62MA20080	2002 FORD F600
01.TK7219	FORD	F350	2004	1FDWF36LX4EA61663	2004 FORD F350
01.TK7220	GMC	TOP KICK	1995	1GDK7H1J9EJ519082	1995 GMC TOP KICK
01.TK8200	FORD		2001	1FDWF36F01EC61463	FORD F350 FLATBED
01.TK8209	FORD		1999	1FDXF46FXCEB40646	FORD F450 STEAM
01.TK8210	FORD		2002	1FDAF57F02EB50461	FORD F350 FLATBED
01.TK8211	FORD		2003	1FDWF37P03ED09299	FORD F350 POWDER TRUCK
01.TK8212	CHEVROLET		2002	1GBJK34132E125300	CHEVY 3500 POWDER TRUCK
01.TK8214	FORD		2010	1FTSW2A52AEA03225	FORD F250 4X2 4 DOOR
01.TK8215	GMC		2004	1GDJK4114E211232	GMC WHITE PICKUP TRUCK
01.TK8216	FORD	F450	2016	1FD0X4GT3GECM996	2016 FORD F450 EXT CAB W/ UTILITY BED
03.TR6006	HURST		2000	1H9T6232XY1057163	HURST 10 TON GOOSE NECK TRAILER
03.TR6008			1999	1KX43154XX1003356	CUSTOM TRAILER
03.TR6009			2007	16VNX162972CT3900	BIG TEX TAMDEN 16X6 BARREL TRAILER
03.TR6011			2007	421HD182975002652	BIG TEX TAMDEN 18X7 TRAILER
03.TR6014			2007	16VNX122072CS9074	2007 BIG TEX 30LA TANDEM TRAILER-SHOP PRESSURE WASHER
03.TR6016			2010	421H02029A0012218	GATOR TAMDEN 7X20 TRAILER
03.TR6017			2010	421H02022A5013341	GATOR TAMDEN 7X20 TRAILER
03.TR6018	GATOR MADE		2015	4Z1HD2028F5015361	2015 GATOR MADE TRAILER
03.TR6019	GATOR MADE		2015	4Z1HD2026F5015360	2015 GATOR MADE TRAILER
03.TR7900	WELLS CARGO	UTILITY		1WC200E2341107267	WELLS CARGO UTILITY TRAILER
03.TR8007				N/A	SINGLE AXLE 5 X10 TRAILER
03.TR8009			1994	KYT23010	HOMEMADE TAMDEN 16X6 TRAILER
03.TR8010			1995	KYT37065	TAMDEN 16X6 TRAILER
03.TR8014			2002	KYT30408	HOMEMADE SINGLE 12X5 TRAILER
03.TR8015			2001	KYT38487	HOMEMADE TAMDEN 6X16 TRAILER
03.TR8018			2004	159F718234K007167	STIGER GOOSENECK TAMDEN 18X7 TRAILER
03.TR8019	STIGER		2004	159F718294K007190	STIGER 16' GOOSE NECK TRAILER
03.TR8020	STIGER		2004	159F718214K007197	STIGER 16' GOOSE NECK TRAILER
03.TR8021			2004	159FS16214K007217	STIGER TAMDEN 16X6 PIN TRAILER
03.TR8026			2009	4VMUL12139G020197	SINGLE 12X6 TRAILER
03.TR8027			2008	159F18230K007143	STIGER GOOSENECK TAMDEN 19X7 TRAILER
03.TR8075			2006	4ASUS162969M40623	16' UTILITY TRAILER
03.TR8076					PIPE TRAILER
03.TR8077			2012	4Z1UA1625C9021301	GATORMADE UTILITY TRAILER 6X16
03.TR8078			2012	4Z1UA2021C9021093	GATORMADE UTILITY TRAILER 6X20 W/RAMP GATE
03.TR8079	TUMFLX STRINGER		2012	32N12	PIPE COIL TRAILER
03.TR8080	BOX				Silver Tool Trailer (Concrete Crew)

ATTACHMENT " A "

Equipment	Manufacturer	Model	ModelYr	VINNumber	Description
03.TR881	CARGOSPORT	CS714TA2	N/A	40LUB1420KPO55377	FACE AMERICAN CARGOSPORT BOX TRAILER
03.TR882	PIPE TRAILER	4872		N/A	Homemade Tow-Behind Pipe Trailer
04.TR6801			2002	13NE5740923514794	FONTAINE 55 TON WEDGE LOWBOY TRAILER
04.TR6805	TRAIL KING		2003	1TKJ0493K3B012912	Trail King Lowboy
04.TR6807	TRAILMAX		2002	1G9K521372A063560	TRAILMAX T-12-UT TRAIL
04.TR6815			2000	473482322V1110715	CRONKHITE 4800 6' X 14' TRAILER
04.TR7802	ROGERS		1980	19322	ROGERS LOWBOY TRAILER (SHEP'S)
04.TR7803	DORSEY		1978	HW-12558 33DATR17	DORSEY DUMP TRAILER
04.TR7804	ROGERS		1985	1RBH48303FAR20379	ROGERS 35 TON TANDEM AXLE
04.TR7806	FRUEHAUF		1971	EWAJ74803	1971 FRUEHAUF TRAILER
04.TR7808	ROGERS			1RBH48309MAR21579	ROGERS 35 TON LOWBOY (PAVING)
04.TR7810	STRICK		1979	229147	1979 STRICK TRAILER
04.TR7811	LANDOLL	410	2007	1LH410VJ171015920	LANDOLL TRAILER
04.TR7812				46CFB16237M002410	TRAFFIC CONTROL TRAILER
04.TR7813	CHEROKEE		1989	7734	'89 CHEROKEE FLOAT TRAILER
04.TR7814	ECONOLINE		1997	42ETPBB29V1004348	ECONOLINE 6 TON TAG TRAIL-1997
04.TR7815	FRUEHAUF			CHS193461	45 FT. FRUEHAUF VAN TRAILER
04.TR7816	FRUEHAUF			HPR482265	45 FT. FRUEHAUF VAN TRAILER
04.TR7817	HOBBS		1983	1H5PM529DN013204	1983 HOBBS TRAILER
04.TR7819	FONTAINE	TH-55	2000	4LF485332V3509093	2000 FONTAINE TH-55 TRAILER
04.TR7820	GREAT DANE		1984	1GRFA9621E5137602	1984 GREAT DANE TRAILER
04.TR7821	FRUEHAUF		1984	1H2V0482XEA012622	1984 FRUEHAUF TRAILER
04.TR7822	TRAILMOBILE		1991	1PTF7AH0M9005262	1991 TRAILMOBILE TRAILER
04.TR7823	LIDDELL	M-75	2002	1L9SL6M321236164	2002 LIDDELL M-75 4-AXLE TRAIL
04.TR7824	GREAT DANE		1986	1GRDM9026QM026901	1986 GREAT DANE TRAILER
04.TR7826	TRANSCRAFT		1988	1TTF45202J1029864	1988 TRANSCRAFT TRAILER
04.TR7828	LANDOLL		2002	1LH660UH221B12466	2002 LAND.TRUCK TRAILER
04.TR7829	GREAT DANE		1985	1GRAA962XFB130112	1985 GREAT DANE TRAILER
04.TR7830	GREAT DANE		1987	1GRDM9028HM010601	1987 GREAT DANE TRAILER
04.TR7831	ECONOLINE	7 TON		42ETPFG2251001159	ECONOLINE 7 TON 21' TRAILER
04.TR7832	GATOR			4Z1UA1627E5012197	GATOR 16' UTILITY TRAILER
04.TR7833	GATOR			4Z1CB1620E5007450	GATOR 16' LOWBOY TRAILER
04.TR7834	FONTAINE		2000	4LFSN0511Y3509734	2000 FONTAINE JEEP, DOLLIES
04.TR7836	FONTAINE		1994	4LF457752R3503651	FONTAINE LOWBOY TRAILOR 1994
04.TR7837	TRAILKING		1988	TKSA04622JM110152	1988 TRAILKING LOWBOY
04.TR7838	LANDOLL		1998	1LH317UJ4W1009470	1998 LANDOLL 317-348 TRAILER
04.TR7839	LOAD KING		2003	5LKL4935931024620	2003 LOAD KING 55 TON LOWBOY
04.TR7840	FONTAINE	60 TON	1993	4LF457345S3503601	1993 FONTAINE 60 TON QUAD
04.TR7841	TRAIL KING	DROP DECK	1998	1TKA04621WM090018	1998 TRAIL KING DROP DECK
04.TR7842	MILLENIUM	M9D24P		TPD24234A000035	MILLENIUM M9D24P FLAT TRAILER
04.TR7901	TRAILMOBILE		1982	1PTT43EJ7B4000318	1982 TRAILMOBILE ASPHALT TANK
04.TR7902	POLAR		1988	1PMC14229J2009409	1988 POLAR ASPHALT TANKER
04.TR7904	POLAR		1988	1PMC14227J2009408	1988 POLAR ASPHALT TANKER
04.TR7905	FRUEHAUF		1992	1H4T0432XNL020407	1992 FRUEHAUF ASPHALT TANKER
04.TR7907	ETNYRE		1995	1E9T44236SE007210	1995 ETNYRE ASPHALT TANKER
04.TR7908	ETNYRE		2015	1E9T78815FE007171	2015 ETNYRE 7250 GALLON TANKER
04.TR8806			2009	40FC053991030586	TALBERT LANDOLL T450 LOWBOY TRAILER
04.TR8805	TRAIL KING		2005	1TKJ048385B010000	TRAIL KING 50 TON LOWBOY TRAILER

ATTACHMENT " A "

Equipment	Manufacturer	Model	ModelYr	VINNumber	Description
04.TR0006	TRAIL KING		2005	1TKS005125B019352/19351 (2 NUMBERS)	TRAIL KING 70 TON LOWBOY TRAILER
04.TR0022			2004	4K8GY242721680374	BIG TEX 34' GOOSE NECK TRAILER
07.TK6251	FORD		2005	1FDXF46P75E035160	FORD F450 MECHANIC TRUCK
07.TK6253	FORD		2006	3FRWX65F66V323252	FORD F650 EXT CAB MECHANIC TRUCK
07.TK6254	FORD		2008	3FRWX75H18V660649	FORD F750 MECHANIC TRUCK
07.TK6255	KENWORTH	T270	2015	3NKHHM6X1FM453160	KENWORTH T370 MECHANICS TRUCK
07.TK7254	KENWORTH	T300	2006	2NKMHDX96M159257	2006 KENWORTH T300 TRUCK
07.TK8250	KENWORTH		1996	2KKMA78KBTM711160	KENWORTH T300 MECHANIC TRUCK
07.TK8251	FORD		2002	3FDWF65GK2MA127E3	FORD F650 MECHANIC TRUCK
07.TK8252	FORD		2005	1FDAF57P85EA17105	FORD F550 MECHANIC TRUCK
07.TK8254	FORD		2007	1FDKF47P77EA73320	FORD F450 MECHANIC TRUCK
07.TK8256	FORD		2004	1FTNF21PX4EC0380	FORD F250 UTILITY TRUCK
07.TK8257	HINO	J38	2009	5PVNVBJM294850160	2009 HINO 338 MECHANICS TRUCK
07.TK8258	HINO	J38	2009	5PVNVBJM09450163	2009 HINO 338 MECHANICS TRUCK
10.CR0010	GROVE		1989	71732	GROVE RT740B CRANE
12.FK6550	SKYTRAK	6036-48	2007	0160008272	SKYTRAK 6036-48 FORKLIFT
12.FK6560	CATERPILLAR		2003	5CN00201	CAT DP45 FORK LIFT
12.FK6561	CATERPILLAR	C5800		AT9003975	CAT V50 FORKLIFT
12.FK7550	YALE			N526628	YALE FORKLIFT
12.FK7551	YALE	GP110	2002	C813V02346Z	YALE FORKLIFT GP110
12.FK7552	RT706H		1997	164328	IR FORKLIFT RT706H
12.FK7553	INGERSOLL RAND	RT706H	1997	164327	IR FORKLIFT RT706H-199
12.FK7554	INGERSOLL RAND	RT706G	1997	153443	IR FORKLIFT RT706G-1997
12.FK8560	HYSTER	H50KM		H177B4108A	HYSTER FORKLIFT
12.FK8562	TOYOTA	42-5FG15		14890	TOYOTA PROPANE FORK LIFT
12.ML6011	GENIE			2658	GENIE 300 4 X 4 AERIAL LIFT (MAN LIFT)
12.ML7010	JLG	80HX		300015641	JLG 80HX-D-ROT BOOM LIFT
12.ML8010	GENIE			31887	2000 GENIE SCISSOR LIFT
13.BR6532	BROCE		2003	403193	BROCE RJ-350 BROOM
13.BR6533	BROCE		2006	403196	BROCE RJ 350 BROOM
13.BR6534	SUPERIOR		2008	007668	SUPERIOR BROOM DT80CT
13.BR6535	SUPERIOR	DT80J	2014	813648	SUPERIOR DT80J BROOM
13.BR6590	TENNANT	8210		8210-1482	TENNANT 8210 SHOP SWEEPER
13.BR7530	JOHN DEERE	301AD	1974	301AD2972441	JOHN DEERE BROOM
13.BR7531	TENNANT		1996	285 10094	TENNANT 285 SWEEPER
13.BR7532	BROCE	RJ300	1997	88527	BROCE RJ300 BROOM
13.BR7533	BROCE	RJ350	1999	89519	BROCE RJ350 BROOM
13.BR7534	BROCE	RJ350	2001	401346	BROCE RJ350 BROOM
13.BR7535	BROCE	BB250B		303003	BROCE BB250B BROOM
13.BR7536	LAYMOR			28716-003	LAYMOR BROOM W/96" BROOM
13.BR7537	BROCE			404207	BROCE BROOM
13.BR7539	SUPERIOR	DT80C	2003	803046	DT80C SUPERIOR BROOM-2003
13.BR7540	SUPERIOR	DT80J		803057	SUPERIOR DT80J BROOM
13.BR8531	WALDON		2000	28297-011	WALDON SM 250 SWEEPMASTER ROAD BROOM
13.BR8532	ROSCO		1993	41995	ROSCO RIDEON BROOM
13.BR8534			2009	008742	SUPERIOR 8FT BROOM
13.BR9060	FORD			C695452	3610 FORD TRACTOR W/ BROOM & SEEDER ATTACHMENTS
13.TK0301			2001	1JVM4H341C172004	JOHNSTON 4000C STREET SWEEPER

ATTACHMENT " A "

Equipment	Manufacturer	Model	ModelYr	VINNumber	Description
13.TK032	FREIGHTLINER	F70	2000	1FV6HJBA2YHF15293	2000 FREIGHTLINER F70 ELGIN SWEEPER TRUCK
14.DZ7011	KOMATSU	D39EX-21		1110	D39EX-21 KOMATSU TRACTOR
14.DZ7012	KOMATSU	D6SEX-15		67090	D6SEX-15 KOMATSU TRACTOR
14.DZ7013	CATERPILLAR	D5C		7PS01000	CAT D5C TRACTOR
14.DZ7014	CATERPILLAR	D3		CFF00672	D3GLGP CATERPILLAR TRACTOR
14.DZ7015	KOMATSU	D39E		P096032	D39E-1 KOMATSU TRACTOR
14.DZ7017	CATERPILLAR	D5N		AKD00395	D5NLGP CATERPILLAR TRACTOR
14.DZ7018	CATERPILLAR	D5M		6GN00427	D5MKL CATERPILLAR TRACTOR
14.DZ7020	CATERPILLAR	D6K		FRH02668	D6KXL CATERPILLAR TRACTOR(GREER) W/GPS
14.DZ8011	CAT	D9R	2004	ABK00607	CAT D9R DOZER
14.DZ8013	CATERPILLAR		2005	KPZ00393	CAT D8T DOZER WITH GPS HARDWARE/WIRING
14.DZ8020	CATERPILLAR		2002	JCR01060	CAT D5M LCP DOZER
14.DZ8021	CATERPILLAR		2003	AKD00295	CAT D5N LCP DOZER
14.DZ8040	CATERPILLAR		1997	SLN00604	CAT D6R XL DOZER
14.DZ8041	CATERPILLAR		2004	AAK000405	CAT D6 DOZER - MAJOR REPAIR
14.DZ8042	CATERPILLAR		2006	ALY02602	CAT D6N LCP DOZER W/GPS
14.DZ8043	CATERPILLAR		2007	ALY03079	CAT D6N LCP DOZER W/GPS
14.DZ8044	CATERPILLAR		2007	ALY03168	CAT D6N LCP DOZER W/GPS
14.DZ8060	CATERPILLAR		2001	6YZ00350	CAT D8R DOZER
14.DZ8061	CATERPILLAR		2001	6YZ00392	CAT D8R II DOZER
14.DZ8062	CATERPILLAR		2002	6YZ00717	CAT D8R II DOZER
14.DZ8063	CATERPILLAR		2002	6YZ00916	CAT D8R II DOZER PUSH TRACTOR
14.DZ8064	CATERPILLAR		2003	6YZ01073	CAT D8R II DOZER
14.DZ8065	CATERPILLAR		2003	6YZ01279	CAT D8R II DOZER
14.DZ8066	CATERPILLAR		2003	6YZ01405	CAT D8R II DOZER
14.DZ8067	CATERPILLAR		2004	6YZ01645	CAT D8R II DOZER
14.DZ8068	CATERPILLAR		2004	6YZ01775	CAT D8R II DOZER - NEEDS MAJOR REPAIR
14.DZ8069	CATERPILLAR		2004	6YZ01776	CAT D8R II DOZER
14.DZ8070	CATERPILLAR		2004	06YZ1813	CAT D8R II DOZER
14.DZ8072	CATERPILLAR		2005	KPZ00824	CAT D8T DOZER W/GPS
14.DZ8073	CATERPILLAR		2005	KPZ00914	CAT D8T DOZER W/GPS
14.DZ8074	CATERPILLAR		2006	J8B00572	CAT D8T DOZER W/GPS
14.DZ8075	CATERPILLAR		2006	KPZ01030	CAT D8T DOZER W/GPS
14.DZ8076	CATERPILLAR		2006	KPZ01243	CAT D8T DOZER W/GPS
14.DZ8091	CATERPILLAR	D10R	1997	3KR00728	CAT D10R CRAWLER TRACTOR
14.DZ8092	CATERPILLAR	D10R	2011	3KR75033	CAT D10R CRAWLER TRACTOR
14.DZ9050	CATERPILLAR		1998	SLN02103	CAT D6R XL DOZER W/ JERSEY BOX
15.SC8211	CATERPILLAR		1990	6AB01405	CAT 621E SCRAPER
15.SC8212	CATERPILLAR		1992	1AB01460	CAT 631E SCRAPER
15.SC8213	CATERPILLAR		1992	1AB01461	CAT 631E SCRAPER
15.SC8214	CATERPILLAR		1992	1AB01462	CAT 631E SCRAPER
15.SC8215	CATERPILLAR		1991	1AB01389	CAT 631E SCRAPER
15.SC8216	CATERPILLAR		1991	1AB01407	CAT 631E SCRAPER
15.SC8217	CATERPILLAR		1995	8PL00054	CAT 621F SCRAPER
15.SC8220	CATERPILLAR		1996	9XC00713	CAT 615C SCRAPER
15.SC8221	CATERPILLAR		1997	9XG00913	CAT 615C SCRAPER PADDLE PAN
15.SC8222	CATERPILLAR		1999	9XC01124	CAT 615C SCRAPER PADDLE PAN
15.SC8224	CATERPILLAR		2004	CLR00408	CAT 631G SCRAPER

ATTACHMENT " A "

Equipment	Manufacturer	Model	ModelYr	VINNumber	Description
15.SC8225	CATERPILLAR		2004	CLR00409	CAT 631G SCRAPER
15.SC8226	CATERPILLAR		2006	9XC01893	CAT 615C SCRAPER PADDLE PAN
15.SC8227	CATERPILLAR		1993	IAB01505	CAT 631E SCRAPER
15.SC8228	CATERPILLAR		1994	INB00914	CAT 631E SCRAPER
15.SC8229	CATERPILLAR		1995	INB00921	CAT 631E SCRAPER
15.SC8230	CATERPILLAR		1995	INB00923	CAT 631E SCRAPER
17.LD8880	CATERPILLAR		1997	9BL01631	CAT 963B TRACK LOADER
17.LD8881	CATERPILLAR		1998	9BL02127	CAT 963B TRACK LOADER
17.LD8882	CATERPILLAR		2002	2DS02692	CAT 963C TRACK LOADER W/CLEARING FORK & GRAPPLE
17.LD8883	CATERPILLAR		2003	2DS03065	CAT 963C TRACK LOADER
17.LD8884	CATERPILLAR		2005	BBD01542	CAT 963C TRACK LOADER
17.LD8885	CATERPILLAR		2006	BBD01246	CAT 963C TRACK LOADER
17.LD8886	CATERPILLAR		2006	BBD02401	CAT 963C TRACK LOADER
23.LD6601	VOLVO		2003	L150EVR595	VOLVO L150E WHEEL LOADER
23.LD6604	CATERPILLAR		2006	JMS02230	CAT 980H WHEEL LOADER
23.LD6606	CATERPILLAR	980M	2018	OKR500378	2015 CAT 980M WHEEL LOADER
23.LD7601	KOMATSU	WA500-3L		A70528	WA500-3L KOMATSU WHEEL LOADER
23.LD7602	CAT	966G		3SW90449	966G CAT WHEEL LOADER
23.LD7603	CAT	966G		3SW90331	966G CAT WHEEL LOADER
23.LD7604	CAT	950G		AXK01427	950G CAT WHEEL LOADER
23.LD7605	CATERPILLAR	966G		3SW00262	966G Caterpillar Wheel Loader
23.LD7606	KOMATSU	WA450-5L		A36389	WA450-5L Komatsu Wheel Loader
23.LD7607	CATERPILLAR	IT38G		7BS00547	IT38G CATERPILLAR TOOL CARRIER
23.LD7609	KOMATSU	WA500		A60062	WA500-1 KOMATSU WHEEL LOADER
23.LD7610	CATERPILLAR	IT28G		8CR02774	CAT IT28G TOOL CARRIER
23.LD8802	CATERPILLAR		1992	1HF02343	CAT IT28B WHEEL LOADER
23.LD8803	CATERPILLAR		1995	3CL01621	CAT IT28F WHEEL LOADER
23.LD8804	CATERPILLAR		1995	6FN00335	CAT IT28F WHEEL LOADER
23.LD8805	CATERPILLAR		1995	3CL01668	CAT IT28F WHEEL LOADER
23.LD8806	CATERPILLAR		1996	8CR00162	CAT IT28G WHEEL LOADER
23.LD8807	CATERPILLAR		2002	8CR03943	CAT IT28G WHEEL LOADER
23.LD8808	CATERPILLAR		2002	8CR03791	CAT IT28G WHEEL LOADER
23.LD8820	CATERPILLAR		2000	9SW00782	CAT 924C WHEEL LOADER
23.LD8821	CATERPILLAR		2006	TWR02306	CAT IT930G WHEEL LOADER
23.LD8822	CATERPILLAR		2006	TWR02434	CAT IT930G WHEEL LOADER
23.SK6716	CASE		1998	JAF0252626	CASE 1845C SKID STEER RUBBERTIRE
23.SK6718	CASE		2002	JAF0366061	CASE 60XT SKID STEER RUBBERTIRE
23.SK6719	CATERPILLAR	248B	2006	0SCL01778	CAT 248B SKID STEER RUBBERTIRE HIGH FLOW - MILLING
23.SK7715	CASE	40XT	2003	JAF0388031	IC 40XT UNILOADER
23.SK7716	CAT	248B	2004	SCL00276	248B CATERPILLAR SKID STEER
23.SK7717	KOMATSU	SK714-5	2005	TF02116	SK714-5 KOMATSU SKID STEER
23.SK7718	KOMATSU	SK1020-5	2005	TF00305	SK1020-5 KOMATSU SKID STEER
23.SK7719	KOMATSU	SK1020-5	2005	TF00303	SK1020-5 KOMATSU SKID STEER
23.SK7720	CAT	257		SLK00397	257 CATERPILLAR SKID STEER
23.SK7722	KOMATSU	SK714-5		F002117	SK714-5 KOMATSU SKID STEER
23.SK7723	KOMATSU	SK714-5		F002118	SK714-5 KOMATSU SKID STEER
23.SK7724	CASE	1845C		JAF0333919	CASE 1845C SKIDSTEER
23.SK7725	KOMATSU	SK-815		KSS259	KOMATSU SK815 SKID STEER



ATTACHMENT " A "

Equipment	Manufacturer	Model	ModelYr	VINNumber	Description
23.SK8711	CATERPILLAR		2003	CNC01761	CAT 277 SKID STEER TRACK
23.SK8719	CATERPILLAR		2006	PAT02742	CAT 246B SKID STEER RUBBERTIRE
23.SK8722	CATERPILLAR		2008	JWF00998	CAT 277C SKID STEER TRACK
23.SK8726	CATERPILLAR		2009	MBT00924	CAT 279C SKID STEER TRACK
23.SK8727	JCB	260T	2011	GE0260TVCA1745287	260T JCB SKID STEER
24.BH6501	CASE		1999	JJG0268381	CASE 588SL BACKHOE RUBBERTIRE
24.BH6502	CASE		2002	JJG0310471	CASE 588M RUBBERTIRE HOE
24.BH7501	CATERPILLAR	416C		SYN06632	416C CATERPILLAR BACKHOE
24.BH7503	KOMATSU	WB140		A21719	WB140-2N KOMATSU BACKHOE
24.BH7505	KOMATSU	WB-140		A21567	KOMATSU WB-140 BACKHOE
24.BH7507	JOHN DEERE	JD310D		B00793	JD310D John Deere Backhoe
24.BH7508	CATERPILLAR	430E	2014	CATM30EKSWD0493	CATERPILLAR 430E BACKHOE
24.BH8501	CATERPILLAR		1998	1WR08273	CAT 416C IT RUBBER TIRE BACKHOE
24.BH8502	CATERPILLAR		1999	SYN06264	CAT 416C RUBBER TIRE BACKHOE
24.BH8503	CATERPILLAR		1999	SYN06635	CAT 416C RUBBER TIRE BACKHOE
24.BH8504	CATERPILLAR		1999	SYN06907	CAT 416C RUBBER TIRE BACKHOE W/HAMMER
24.BH8505	CATERPILLAR		2001	BLN00570	CAT 420D IT RUBBER TIRE BACKHOE W/HAMMER
24.BH8506	CATERPILLAR		2001	FDP02499	CAT 420D RUBBER TIRE BACKHOE
24.BH8507	CATERPILLAR		2001	FDP00350	CAT 420D RUBBER TIRE BACKHOE
24.BH8509	CATERPILLAR		2002	FDP07336	CAT 420D RUBBER TIRE BACKHOE
24.BH8510	CATERPILLAR		2003	FDP12767	CAT 420D RUBBER TIRE BACKHOE
24.BH8511	CATERPILLAR		2004	FDP15126	CAT 420D RUBBER TIRE BACKHOE
24.BH8512	CATERPILLAR		2004	FDP15127	CAT 420D RUBBER TIRE BACKHOE
24.BH8513	CATERPILLAR		2004	FDP15170	CAT 420D RUBBER TIRE BACKHOE
24.BH8514	CATERPILLAR		2004	BLN10759	CAT 420D IT RUBBER TIRE BACKHOE
24.BH8515	CATERPILLAR		2004	BLN10681	CAT 420D IT RUBBER TIRE BACKHOE
24.FM9013	JOHN DEERE	6430	2011	L06430H662618	JOHN DEERE 6430 TRACTOR
26.RT8610	CATERPILLAR		2010	EED01074	CAT 773F ROCK TRUCK
26.RT8611	CATERPILLAR		2010	EED01075	CAT 773F ROCK TRUCK
26.RT8612	CATERPILLAR		2010	EED01076	CAT 773F OFF HIGHWAY TRUCK
27.AT8610	CATERPILLAR		2003	AGF00786	CAT 730 ARTICULATED DUMP TRK
27.AT8611	CATERPILLAR		2003	AGF00787	CAT 730 ARTICULATED DUMP TRK
27.AT8612	CATERPILLAR		2003	AGF00788	CAT 730 ARTICULATED DUMP TRK
27.AT8613	CATERPILLAR		2003	AGF00814	CAT 730 ARTICULATED DUMP TRK
27.AT8614	CATERPILLAR		2003	AGF00815	CAT 730 ARTICULATED DUMP TRK
27.AT8615	CATERPILLAR		2003	AGF00661	CAT 730 ARTICULATED DUMP TRK
27.AT8616	CATERPILLAR		2005	B1W00162	CAT 730 ARTICULATED EJECTOR
27.AT8617	CATERPILLAR		2005	B1W00163	CAT 730 ARTICULATED EJECTOR
27.AT8618	CATERPILLAR		2006	B1W00177	CAT 730 ARTICULATED EJECTOR
27.AT8619	CATERPILLAR		2006	B1W00234	CAT 730 ARTICULATED EJECTOR
27.AT8620	CATERPILLAR		2006	B1W00235	CAT 730 ARTICULATED EJECTOR
27.AT8641	CATERPILLAR		2003	AZZ00250	CAT 740 ARTICULATED EJECTOR
27.AT8642	CATERPILLAR		2003	AZZ00281	CAT 740 ARTICULATED EJECTOR
27.AT8643	CATERPILLAR		2003	AZZ00342	CAT 740 ARTICULATED EJECTOR
27.AT8645	CATERPILLAR		2006	B1R00214	CAT 740 ARTICULATED EJECTOR
27.AT8646	CATERPILLAR		2007	B1R00230	CAT 740 ARTICULATED EJECTOR
27.AT8647	CATERPILLAR		2007	B1R00318	CAT 740 ARTICULATED EJECTOR
27.AT8648	CATERPILLAR		2008	B1R00389	CAT 740 ARTICULATED EJECTOR

ATTACHMENT " A "

<u>Equipment</u>	<u>Manufacturer</u>	<u>Model</u>	<u>ModelYr</u>	<u>VINNumber</u>	<u>Description</u>
29.HR7402	TRAMAC	V32		135550	TRAMAC V32 HYDRAULIC HAMMER
29.HR7403	TRAMAC	85		138968	TRAMAC 85 HYDRAULIC HAMMER
29.HR8402			1991	26679	NPK HYD HOE RAM HAMMER
29.HR8403				33327	NPK HYD HOE RAM HAMMER
29.HR8404			1997	52863	NPK HYD HOE RAM HAMMER 16X
29.HR8405			1997	34447	NPK HYD HOE RAM HAMMER 16X
29.HR8406				60801	NPK HYD HOE RAM HAMMER 4X
29.HR8407			2001	AXC16152	NPK HYD HOE RAM HAMMER 2X
29.HR8409			2003	71852	NPK E205 HYD HOE RAM HAMMER
29.HR8410			2004	76117	NPK E220 HYD HOE RAM HAMMER
29.HR8411	NPK	E220	2005	75240	NPK E220 HYD HOE RAM HAMMER
29.HR8412	NPK	E205	2007	74916	NPK E205 HOE RAM HAMMER
29.HR8413	NPK	E207	2008	85699	NPK E207 1500LB HYD HAMMER
29.HR8414	NPK	GR-10	2014	109112	2014 NPK GH-10 HAMMER
29.PC8030	MORBARK			571-196	MORBARK 1300 TUB GRINDER
29.PC8031	MORBARK	30RXL		1981	MORBARK CHIPPER
30.FL6630	ATHEY		1997	740-180	ATHEY 7-12 FORCE FEED LOADER
30.GR6421			2001	360	LEEBOY 685 MOTOR GRADER
30.GR6422	CATERPILLAR		1992	61M14998	CAT 12G MOTOR GRADER
30.GR6423	CATERPILLAR		2003	AMZ00644	CAT 12H MOTOR GRADER W/GPS
30.GR6424	CATERPILLAR		2005	AMZ00944	CAT 12H MOTOR GRADER
30.GR7420	CATERPILLAR	12H		AMZ00954	CAT 12H MOTOR GRADER
30.GR7421	CATERPILLAR	12H		4XM01808	12H Caterpillar Motor Grader
30.GR7422	CATERPILLAR	12H		AMZ00303	12H CATERPILLAR MOTOR GRADER
30.GR7424	CATERPILLAR	12G		61M15340	12G CATERPILLAR MOTOR GRADER
30.GR7425	CATERPILLAR	12G		61M08946	12G CATERPILLAR MOTOR GRADER
30.GR8420	CATERPILLAR		1993	93U03400	CAT 16G MOTOR GRADER
30.GR8421	CATERPILLAR		1995	7WJ00660	CAT 14H MOTOR GRADER W/SONICMASTER
30.GR8422	FIAT	FC65C	1996	85905148	FIAT FC65C MOTOR GRADER
30.GR8423	CATERPILLAR		1997	7WJ00498	CAT 14H MOTOR GRADER W/SONICMASTER
30.GR8424	CATERPILLAR		1999	7WJ01285	CAT 14H MOTOR GRADER W/SONICMASTER
30.GR8425	CATERPILLAR		2001	7WJ01968	CAT 14H MOTOR GRADER W/GPS
30.GR8426	CATERPILLAR		2004	ASE01090	CAT 14H MOTOR GRADER W/GPS
30.GR8427	CATERPILLAR		2006	ASE01497	CAT 14H MOTOR GRADER W/GPS
31.EX6521	CATERPILLAR		1999	2JR02506	CAT 325B EXCAVATOR W/THUMB
31.EX7520	XLJ300			210017487	XL 3300 GRADALL
31.EX7521	KOMATSU	PC150LC		KJ2346	PC150LC-6K KOMATSU EXCAVATOR
31.EX7522	KOMATSU	PC220		20201	PC220USLC-3 KOMATSU EXCAVATOR
31.EX7524	KOMATSU	PC220		A83812	PC220LC-6 KOMATSU EXCAVATOR
31.EX7525	CATERPILLAR	312CL		CBA03060	312CL CATERPILLAR EXCAVATOR
31.EX7526	KOMATSU	PC400		A85044	PC400LC-6LK KOMATSU EXCAVATOR
31.EX8520	CATERPILLAR		1998	2JR01626	CAT 325BL EXCAVATOR HOE RAM W/HAMMER
31.EX8521	KOMATSU	PC250LC-11	2014	A27081	KOMATSU PC250LC-11 EXCAVATOR
31.EX8525	CATERPILLAR		2001	AGS00832	CAT 345B LME EXCAVATOR
31.EX8526	2009700		2002	BFE00180	CAT 325CL EXCAVATOR W/THUMB & HAMMER
31.EX8528	CATERPILLAR		2003	BFE00651	CAT 325CL EXCAVATOR W/ THUMB ATTACHMENT
31.EX8529	CATERPILLAR		2003	BFE00853	CAT 325CL EXCAVATOR HOE RAM W/HAMMER
31.EX8530	CATERPILLAR		2004	CRB00791	CAT 325CL EXCAVATOR W/HAMMER

ATTACHMENT " A "

Equipment	Manufacturer	Model	ModelYr	VINNumber	Description
31.EK8531	CATERPILLAR		2004	AGS02329	CAT 345BL ME II EXCAVATOR
31.EK8532	CATERPILLAR		2004	CRB00976	CAT 325CL EXCAVATOR HOE RAM W/HAMMER
31.EK8533	CATERPILLAR		2004	CRB00987	CAT 325CL EXCAVATOR W/ MULCHING ATTACH.
31.EK8534	CATERPILLAR		2005	BFE01641	CAT 325CL EXCAVATOR
31.EK8535	CATERPILLAR		2005	DKY03354	CAT 330CL EXCAVATOR
31.EK8536	CATERPILLAR		2005	KDD01057	CAT 330CL EXCAVATOR
31.EK8537	CATERPILLAR		2006	CBA02416	CAT 312CL EXCAVATOR W/HAMMER
31.EK8538	CATERPILLAR		2007	MWF01039	CAT 330DL EXCAVATOR
31.EK8539	CATERPILLAR		2007	PAL00335	CAT 325DL EXCAVATOR
31.EK8540	CATERPILLAR		2007	PAL00401	CAT 325DL EXCAVATOR
31.EK8541	CATERPILLAR	345C	2007	PJW01920	CAT 345C EXCAVATOR W/ HAMMER
31.EK8542	CATERPILLAR		2008	0A3R01064	CAT 325DL EXCAVATOR
31.EK8543	CATERPILLAR		2008	0A3R01072	CAT 325DL EXCAVATOR
31.EK8544	CATERPILLAR		2008	CBA04501	CAT 312CL EXCAVATOR
31.EK8545	KOMATSU	PC000LC-8	2010	55225	KOMATSU PC000LC-8 EXCAVATOR
31.EK8546	CATERPILLAR	336EL	2013	FJH00262	CAT 336EL W/ GPS
31.EK8547	CATERPILLAR	336FL	2016	RKB01638	2016 CAT 336FL EXCAVATOR
34.AB8013	PRO-TEC		2003	Z56AB03	PRO-TEC 2200-SE ARROW BOARD
34.MM7283				6489	MESSAGE BOARD
34.MM8283	VER-MAC	PCMS-1500	2014	2S9US4129E8132607	VER-MAC MESSAGE BOARD
34.MM8284	VER-MAC	PCMS-1500	2014	2S9US4128E8132617	VER-MAC MESSAGE BOARD
34.MM8285	VER-MAC	PCMS-1500	2014	2S9US4128E8132618	VER-MAC MESSAGE BOARD
34.MM8286	VER-MAC	PCMS-1500	2014	2S9US4121E8132619	VER-MAC MESSAGE BOARD
34.MM8287	ADDCO	DH 1000		589286	ADDCO DH 1000 MESSAGE BOARD
34.MM8288	ADDCO	1000 ALS		585610	ADDCO 1000 ALS MESSAGE BOARD
34.MM8289	ADDCO	DH 1000		587806	ADDCO DH 1000 MESSAGE BOARD
34.MM8290	ADDCO	1000 ALS		590835	ADDCO 1000 ALS MESSAGE BOARD
34.MM8291	ADDCO	DH 1000 ALS		585608	ADDCO DH 1000 ALS MESSAGE BOARD
34.MM8292	ADDCO	DH 1000		587897	ADDCO DH 1000 MESSAGE BOARD
34.MM8293					MESSAGE BOARD
34.MM8294	ADDCO	DH1000		589285	ADDCO DH 1000 ALS MESSAGE BOARD
34.MM8295	ADDCO	DH1000	1999	585590	ADDCO DH 1000 ALS MESSAGE BOARD
34.MM8296	VER-MAC	MESSAGE BOARD		2S9US4123DS132039	VER-MAC 3 LINE MESSAGE BOARD
34.MM8297	VER-MAC	MESSAGE BOARD		2S9US4123DS132040	VER-MAC 3 LINE MESSAGE BOARD
34.MM8298	VER-MAC	MESSAGE BOARD		2S9US4123DS132041	VER-MAC 3 LINE MESSAGE BOARD
34.MM8299	VER-MAC	MESSAGE BOARD		2S9US4123DS132042	VER-MAC 3 LINE MESSAGE BOARD
34.MM8301	ALLMAND			9904B416	ALLMAND ARROW BOARD
34.MM8302	ALLMAND			Z56AB03	ALLMAND ARROW BOARD
34.MM8303	ALLMAND			9904B470	ALLMAND ECLIPSE ARROW BOARD
34.MM8304		M-90 B		1093406	PROTECT O FLASH ARROW BOARD
34.MM8306	ALLMAND			0298AB02	ALLMAND ARROW BOARD
34.MM8307	ALLMAND			9007B4119	ALLMAND ARROW BOARD
34.MM8308				A93-15-001611	PROTECT O FLASH ARROW BOARD
34.MM8309	WANCO	WTSP		5F11S1014E1004484	WANCO ARROW BOARD
34.MM8310	WANCO	WTSP		5F11S1012E1004485	WANCO ARROW BOARD
41.PC7044	MAXIGRIND	460		5091416	MAXIGRIND 460
41.PC7045	CMI	MAXIGRIND		2868	CMI MAXIGRIND 460
41.PC8041	EXTEC		2006	9983	EXTEC IMPACT CRUSHER



ATTACHMENT " A "

Equipment	Manufacturer	Model	ModelYr	VINNumber	Description
43.PC7042	PEP			N/A	PEP PORTABLE SCREENING PLANT
43.PC7043	SCREEN ALL	C-150D		00671	READ SCREEN-ALL MODEL C-150-D
43.PC9042	EXTEC		2006	10163	EXTEC S5 SCREEN PLANT
46.ZZ0102	H&B				H&B 4,000 LB PLANT 12
46.ZZ0103	BARBER GREEN				BARBER GREEN 10,000LB PLANT 13
46.ZZ0104	BARBER GREEN				BARBER GREEN 12,000LB PLANT 14
46.ZZ0105	BARBER GREEN				BARBER GREEN 10,000LB PLANT 15
46.ZZ0106	ASTEC				ASTEC DOUBLE BARREL PLANT 16
46.ZZ0112	HEATEC				HEATEC TAY-25E 25,000 GAL AC TANK
46.ZZ0113	GEN-TEC			3641	GEN-TEC 15,000 GA AC TANK
46.ZZ0114	ADM				ADM RAP BIN AND FEEDER
46.ZZ0116	ASTEC				ASTEC RAP CRUSHING/FEEDER SYSTEM
46.ZZ0119	HEATEC			H90-213	HEATEC HC-120 HELICAL COIL HEATER
46.ZZ0120	GENTEC			CJA11119	GENTEC AGGREGATE FEED SYSTEM
46.ZZ0122	HERMAN			0010443-0096924-IN	HERMAN GREANT DC-70 DRYER & ACCY
46.ZZ0123	ASTEC			89-139	ASTEC SILO & DRAG CONVEYOR
46.ZZ0124	PMI			324250-3775	PMI HIS CRUSHER-TYCO SCREEN
46.ZZ0125	RELIABLE			1295-12162002	RELIABLE COLD FEED BINS (3)
46.ZZ0126	ASTEC			03JRM029.1	ASTEC SBH-71-17 STATIONARY BAGHOUSE
46.ZZ0127	BENSHAW			16136-3323	BENSHAW MOTOR CONTROL CENTER
46.ZZ0128	MARKLINE			31331	MARKLINE BATCH HOUSE MODEL 1428
46.ZZ0130	GENTEC			21239	GENTEC ACCU-BATCH
46.ZZ0131	GENTEC			21239	GENTEC ACCU-BATCH
46.ZZ0132	GENTEC			21239	GENTEC ACCU-LOAD
46.ZZ0133					BURNER TANK & FUEL PUMP
46.ZZ0134					OIL-HEATER EXCHANGER
46.ZZ0135	HAUCK				HAUCK STAR JET 520-E
46.ZZ0138					TURBO RAP GATOR
46.ZZ0139					GEAR BOX DRUM
46.ZZ0140					PM2 BLENDING SYSTEM ASTEC
46.ZZ0145	ASTEC				ASTEC PORTABLE DOUBLE BARREL 07-003 PLANT 17/15
46.ZZ0146	WINSLOW			84-11070-11	WINSLOW TRUCK SCALE
46.ZZ0147	STAR JET				STAR JET BURNER S44500F
46.ZZ0148	STAR JET				STAR JET BURNER S44500F
46.ZZ0149					COLD FEED SYSTEM
46.ZZ0150	DEISTER				SCREEN DEISTER USM-2414
46.ZZ0160					EXHAUST FAN ASSEMBLY 44"
50.TK6216	FORD		2011	JFRWF6FC1BY369128	FORD F650 FLAT BED/STEAM TRUCK
50.TK6353	FORD		1993	1FDXK74C6PVA30943	FORD F700 CREW SUPPLY TRUCK
50.TK8207	FORD		1993	1FDXK84A9PVA20785	FORD F800 FLATBED
51.TK6361	FORD		1996	1FTXR82E1TVAB3542	FORD L8000 SINGLE AXLE DUMP TRUCK
51.TK7360	CHEVROLET	KODIAK	1995	1GDM7H1P8SJI15485	1995 CHEVROLET KODIAK DUMP TRUCK
51.TK8363	FORD		1999	3FEXF8018XMA07975	FORD F800 DUMP TRUCK SINGLE AXLE
51.TK8365	MACK		1999	1M2P324C3XM045132	MACK RD680S DUMP TRUCK
51.TK8371	CATERPILLAR	CT660S	2013	3HTJGKT07FN142926	2013 CAT CT660S TRI-AXLE DUMP TRUCK
51.TK8372	CATERPILLAR	CT660S	2013	3HTJGKT27FN142927	2013 CAT CT660S TRI-AXLE DUMP TRUCK
51.TK8373	CATERPILLAR	CT660S	2013	3HTJGKT47FN142928	2013 CAT CT660S TRI-AXLE DUMP TRUCK
51.TK8374	CATERPILLAR	CT660S	2013	3HTJGKT77FN143250	2013 CAT CT660S TRI-AXLE DUMP TRUCK

ATTACHMENT " A "

Equipment	Manufacturer	Model	ModelYr	VINNumber	Description
52.TK6202	MACK	CH613	2006	1M1AJ07YX6N004761	MACK CHN613 LOWBOY
52.TK6203	PETERBILT	309	2013	1KFXD40XDD182418	2013 PETERBILT 309 TRACTOR
52.TK7351	PETERBILT	379	2002	1KPSPREX52D585722	2002 PETERBILT 379
52.TK7353	WESTER STAR	4964EX	1999	2WKEDDCJJK958209	1999 WESTERN STAR 4964EX
52.TK7354	PETERBILT	379	2000	1KPSDBOXJYN312790	2000 PETERBILT 379
52.TK7355	PETERBILT		2005	1KPSDBOX25N063132	2005 RED PETERBILT
52.TK7357	PETERBILT	379	2003	1KPSDB9X93D588465	2003 PETERBILT 379
52.TK7358	PETERBILT	379	2006	1KPSDBOX66N632515	2006 PETERBILT 379
52.TK7359	STERLING	BOOM TRUCK	2002	2FZAAKAK82AH62759	2002 STERLING 17 TON BOOM TRK
52.TK7370	MACK	R688ST		1L2N187Y9EA04591	MACK R688ST (HOOKED TO MAXI GRIND)
52.TK8351	FORD		1988	1FDZA90X9VA27851	FORD LT9000 WATER TRUCK
52.TK8352	FORD		1995	1FDZA90X9VA72712	FORD LT9000 TRACTOR
52.TK8353	STERLING		1999	2FZNNXYB4KAA54556	STERLING
52.TK8354	KENWORTH	W900L	2006	1XKWPBEX66J160415	KENWORTH W900L TRACTOR
52.TK8355	FREIGHTLINER		1999	1FVXLJ8B6XHB47748	FREIGHTLINER FL80 BOOM TRUCK
52.TK8356	STERLING	L8500	2005	2FZHA WDC35AN93228	2005 STERLING L8500 W/NATIONAL 600E 20 TON CRANE
53.TK6303	MACK		1991	1M2AA12Y0MW011685	MACK CH613 WATER TRUCK
53.TK6304	KENWORTH		1997	1XKDD89X6VR752312	KENWORTH T800 WATER TRUCK
53.TK7302	KENWORTH	T800		1XKDDU9X0YJ847236	2000 KENWORTH T800
53.TK7306	MACK	RS6	1987	1M2T157CXH8803992	1987 MACK RS6
53.TK7307	WESTERN STAR	4964EX	2000	2WKEDD3JKYK965837	2000 WESTERN STAR 4964EX
53.TK7309	STERLING		2004	2FZAASAKM4M42156	STERLING 2004 TRUCK ****(TK7343 NOW)*****
53.TK7312	WESTERN STAR	490	1989	2WKPDCC89KK923005	1989 WESTERN STAR 490
53.TK7313	MACK		1990	1M2AY09CJLM085129	'90 MACK WATER TRUCK
53.TK8305	FORD		1995	1FTY99B4SVA30457	FORD L9000 WATER TRUCK (4000 GA)
53.TK8306	FORD		1998	1FDZS86F3WVA12985	FORD TANDEM AXLE WATER TRUCK
53.TK8307	STERLING		1999	2FZNAJBB1XAF47144	STERLING LT7500 WATER TRUCK
53.TK8308	FREIGHTLINER		2001	1FVHBXAK01HG48929	FREIGHTLINER FL80 WATER TRUCK
53.TK8309	INTERNATIONAL		2000	2HSCBAHR5YC871084	INTERNATIONAL 9100 WATER TRUCK
54.TK6341	INTERNATIONAL		2000	1HTSCABNIYH287394	INTERNATIONAL 4700 DISTRIBUTOR TRUCK
54.TK6342	FORD		2003	3FRXF76P55V163576	FORD F750 DISTRIBUTOR TRUCK
54.TK6345	FORD		2007	3FRXF75HJ7V396899	FORD F750 DISTRIBUTOR TRUCK
54.TK7342	ETNYRE	S2800	2000	1HTSCABNXYH311031	2000 ETNYRE S2800 DISTRIBUTOR
54.TK7343	ETNYRE	S3603	2004	2FZAASAKM4M42156	2004 ETNYRE DISTRIBUTOR TRUCK
54.TK7344	INTERNATIONAL			1HTZAAAN69J085319	INTERNATIONAL ASPHALT DISTRIBUTOR TRUCK
54.TK7345	STERLING		1999	2FZHLJAA6XAA12200	1999 ETNYRE STERLING TRUCK
54.TK7346	FORD	F650	2004	3FDWF65J82MA12390	2004 FORD F650 DISTRIBUTOR
54.TK7347	FORD	F650	2004	3FRWF65G54V610641	2004 FORD F650 SERVICE TRUCK
54.TK7348	INTERNATIONAL	4300	2003	1HTMMAAL93H554666	2003 INTERNATIONAL 4300
55.TK6320	FREIGHTLINER		1993	1FV6HF5A5PLA16328	FREIGHTLINER FL70 GREASE/FUEL
55.TK6321	FREIGHTLINER		1999	1FV6HLBAJXHF33350	FREIGHTLINER FL70 GREASE/FUEL
55.TK6322	INTERNATIONAL		200	1HTMMAAL64H617546	INTERNATIONAL 4300 GREASE TRUCK
55.TK6323	FORD	F-750	2005	3FRXF75T15V136728	FORD F-750 FUEL/GREASE TRUCK
55.TK6351	MACK	C5300	1999	VC6BA03B0KB051844	MACK SUPPLY TRUCK
55.TK6352	INTERNATIONAL		1992	1HTSDNUN8NH405180	INTERNATIONAL 4900 SUPPLY TRUCK
55.TK7320	MACK	CL713	1999	1M2AD09CJXW007887	1999 MACK CL713
55.TK7321	MACK	RD890	1991	1M2P274C7MM001114	1991 MACK RD890SX
55.TK7323	MACK	DMC886	1981	1M2C114C7BA001045	1981 MACK DMC886SX

ATTACHMENT " A "

Equipment	Manufacturer	Model	ModelYr	VIN/Number	Description
55.TK7324	FORD		1997	1FDKR02E9VVA27652	1997 FORD FUEL TRUCK
55.TK7325	FORD	L9000	1977	W90UV026322	1977 L9000 GREASE TRUCK
55.TK7326	MACK	RD600	2000	1M3P114KSYM002187	2000 MACK RD600GK-GLIDER
55.TK7327	CHEVROLET	KODIAK	1996	1GBE6H1PXTJ106243	1996 CHEVROLET KODIAK FUEL
55.TK7328	MACK	MS300P	2000	VG6M118D6YB303757	2000 MACK MS300P BI-FUEL TRUCK
55.TK8320	FORD		1992	1FDKK04AJNVA06309	FORD F800 GREASE TRUCK
55.TK8321	FREIGHTLINER		1993	1FV6HFAA7PL496354	FREIGHTLINER FL70 FUEL TRUCK (2000 GA)
55.TK8322	FORD		1994	1FDYR90TKRVA16547	FORD L9000 FUEL/GREASE TRUCK
55.TK8323	FORD		1994	1FDYR90L0RVA42480	FORD L9000 FUEL TRUCK (2000 GA)
55.TK8324	FORD		1999	3FEXF8011XMA12919	FORD F800 FUEL TRUCK
55.TK8325	FORD		1999	3FEXF8018XMA12920	FORD F800 GREASE/FUEL TRUCK
55.TK8326	FREIGHTLINER		2000	1FV6HLBAJYHF33457	FREIGHTLINER FL70 FUEL/GREASE TRUCK
60.SB7020	ROADTEC	SB2500D		SB2500D-1080	ROADTEC SB2500D SHUTTLE BUGGY
60.SB7021	ROADTEC	SB2500B		SB2500BX355	SB-2500B ROADTEC S-BUGGY
60.SB9020			2000	SB2500BK349	ROADTEC SB2500 SHUTTLE BUGGY
60.SB9021			2006	SB2500BK821	ROADTEC SB2500C SHUTTLE BUGGY
61.RW6430	BLAW KNOX	RW100	1990	10013-09	BLAW KNOX RW100 ROADWIDENER
61.RW7200	ETNYRE			K4561	ETNYRE CHIP SPREADER
61.RW7430	BLAWKNOX	RW100		RW100-0956-017	BLAWKNOX RW100 ROAD WIDENER
61.RW7431	BLAWKNOX	RW100		10019-1	BLAWKNOX RW100 ROAD WIDENER
61.RW7432	BLAWKNOX	RW195D		RW195D176691	BLAWKNOX RW195D ROAD WIDENER
61.RW7433	BLAWKNOX	RW100		10028-14	BLAWKNOX RW100 ROAD WIDENER
61.RW7434	BARBER GREEN	730	1990	BC730141	BARBER GREEN 730 ROAD WIDENER
62.PV6404	BLAW KNOX		2002	218101-09	BLAW KNOX PF2181 PAVR RUBBERTIRE 8'
62.PV6405	BLAW KNOX		1996	320032-25	BLAW KNOX PF3200 PAVR RUBBERTIRE 10'
62.PV6406	BLAW KNOX		2002	187355	BLAW KNOX PF2181 PAVR RUBBERTIRE 8' PAVR
62.PV6407	BLAW KNOX		2001	55103071	BLAW KNOX PF5510 PAVR TRACK
62.PV6430	CATERPILLAR	AP1000E	2013	T1F00214	CAT AP1000E 10' RUBBER TIRE PAVR
62.PV7403	BLAWKNOX	PF5510		551028-18	BLAWKNOX PF5510 PAVR
62.PV7404	BLAWKNOX	PF3200		320025-08	BLAWKNOX PF5510 PAVR
62.PV7405	BLAWKNOX	PF3200		320027-91	BLAWKNOX PF3200 PAVR
62.PV7406	BLAWKNOX	PF5510		551028-65	BLAWKNOX PF5510 PAVR
62.PV7407	BLAWKNOX	PF2181		218101-78	BLAWKNOX PF2181 PAVR
62.PV7408	BLAWKNOX	PF3200		187738	BLAWKNOX PF3200 PAVR
62.PV7409	VOLVO	PF6170		5189	VOLVO PF6170 PAVR
62.PV7410	VOLVO	PF6170		5190	VOLVO PF6170 PAVR
62.PV7411	BLAWKNOX	PF2181		218101-61	BLAWKNOX PF2181 PAVR
62.PV7412	BLAW-KNOX	PF2181		218101-60	PF2181 BLAW-KNOX PAVR
62.PV7413	BLAW-KNOX	PF510		51004-21	BLAW-KNOX PF510 PAVR
62.PV9040	BLAW KNOX		2000	320027-76	BLAW KNOX PF3200 PAVR RUBBERTIRE
62.PV9041	BLAW KNOX		2006	198718	BLAW KNOX PF3200 PAVR RUBBERTIRE 10'
64.RL6133	INGERSOLL-RAND		2002	169693	INGERSOLL-RAND DD30 ROLLER
64.RL6134	INGERSOLL-RAND		2003	173064	INGERSOLL-RAND DD30 ROLLER
64.RL6135	CATERPILLAR		1995	4JL00183	CAT CB-334B COMPACTOR STONE
64.RL6137	INGERSOLL-RAND		2002	170016	INGERSOLL-RAND DD90 ROLLER ASPHALT
64.RL6138	INGERSOLL-RAND		2002	170017	INGERSOLL-RAND DD90 ROLLER ASPHALT
64.RL6139	INGERSOLL-RAND		2001	166397	INGERSOLL-RAND DD110HF ROLLER ASPHALT
64.RL6140	INGERSOLL-RAND		2007	194224	INGERSOLL-RAND DD118HF ROLLER ASPHALT

ATTACHMENT " A "

Equipment	Manufacturer	Model	ModelYr	VINNumber	Description
64.RL6141	CATERPILLAR	CB54 KW	2012	JLM00622	CAT CB54 KW VIBRATORY COMPACTOR
64.RL6142	CATERPILLAR	CB54 KW	2012	JLM00728	CAT CB54 KW VIBRATORY COMPACTOR
64.RL7129	FERGUSON	195J		10066	FERGUSON 50 TON ROLLER
64.RL7130	BOMAG		1992	1.0117E+11	BOMAG ROLLER BW120 AD
64.RL7132	INGERSOLL RAND		1997	140634	IR DD110 VIBRATORY ROLLER
64.RL7134	BOMAG	BW20R	1999	3.01531E+11	BOMAG BW20R VIBRATORY ROLLER
64.RL7136	INGERSOLL RAND	DD110	2000	163091	IR DD110 VIBRATORY ROLLER
64.RL7138	INGERSOLL RAND	DD110	2000	171967	IR DD110 VIBRATORY ROLLER
64.RL7140	INGERSOLL RAND	DD110HF		176037	IR DD110HF ROLLER ASPHALT
64.RL7141	BOMAG	BW11RH		901A23202028	BOMAG BW 11 RH PNEUMATIC
64.RL7142	CAT	CS533E		ASL81645	CATERPILLAR CS533E COMPACTOR
64.RL7143	HAMM	HD120VV		1040123	HAMM HD+120VV HF DOUBLE DRUM
64.RL7144	INGERSOLL RAND			194166	2007 INGERSOLL RAND DD110 ROLLER
64.RL7145	HAMM	HD120V	2009	H1820149	HAMM HD 120V ROLLER
64.RL7146	CAT	CB54KW		JLM00223	CATERPILLAR CB54KW COMPACTOR
64.RL7147	VOLVO			VCE00D31P0S276291	2013 VOLVO ROLLER
64.RL7148	INGERSOLL RAND	DD90		150482	IR DD90 VIBRATORY ROLLER
64.RL7149	INGERSOLL RAND	DD110		135125	IR DD110 VIBRATORY ROLLER
64.RL7150	INGERSOLL RAND	DD110HF	2003	173182	DD110HF VIBRATORY ROLLER-2003
64.RL7151	INGERSOLL RAND	DD110HF	2003	175137	DD110HF VIBRATORY ROLLER-2003
64.RL7153	BOMAG	BW120	1998	1.01171E+11	BW120AD VIBRATORY ROLLER-1998
64.RL7154	VOLVO	SD115D	1997	148764	SD115D VIBRATORY ROLLER-1997
64.RL7156	BOMAG	BW172D	1990	1.0152E+12	BW172D ROLLER-1990
64.RL7158	HAMM	120		1750149	HAMM 120 ROLLER
64.RL7159	INGERSOLL RAND	DD90		150482	INGERSOLL RAND DD90
64.RL8131	CATERPILLAR		1993	1YJ00380	CAT CP563 COMPACTION ROLLER SHEEPFOOT
64.RL8133	CATERPILLAR		1995	5JN00105	CAT CP563 COMPACTION ROLLER SHEEPFOOT
64.RL8134	CATERPILLAR		1996	5JN00248	CAT CP563 COMPACTION ROLLER SHEEPFOOT
64.RL8135	CATERPILLAR		1995	4JL00176	CAT CB534B DOUBLE DRUM ROLLER STONE
64.RL8137	CATERPILLAR		1995	4JL00187	CAT CB534B DOUBLE DRUM ROLLER STONE
64.RL8138	CATERPILLAR		1997	6RN00339	CAT B25G COMPACTION ROLLER
64.RL8139	CATERPILLAR		1999	5HN00498	CAT CB534C COMPACTION ROLLER STONE
64.RL8140	CATERPILLAR		1999	4KN00774	CAT CS63J COMPACTION ROLLER SMOOTH
64.RL8141	CATERPILLAR		2001	9ZW00441	CAT 563D COMPACTION ROLLER SHEEPFOOT
64.RL8142	CATERPILLAR		2003	AXB00445	CAT B25G II COMPACTION ROLLER
64.RL8143	CATERPILLAR		2003	AXB00446	CAT B25G II COMPACTION ROLLER
64.RL8144	CATERPILLAR		2000	9MW00564	CAT 563C COMPACTION ROLLER SMOOTH
64.RL8145	CATERPILLAR		2004	AXB00486	CAT B25G II COMPACTION ROLLER
64.RL8146	CATERPILLAR		2005	9ZW00537	CAT CP563 COMPACTION ROLLER SHEEPFOOT
64.RL8147	CATERPILLAR		2005	5HN00725	CAT CB534C DOUBLE DRUM ROLLER STONE
64.RL8149			2005	540835	WACKER RD11A ROLLER
69.MM9001	CATERPILLAR		2006	PM201KPNM00211	CAT PM201 MILLING MACHINE
69.MM9002	CATERPILLAR		2006	PM200JPIC000304	CAT PM200 MILLING MACHINE
71.CM7022	POWERCURBER		2002	5700B-10-0220590	POWERCURBER 5700B
71.CM8020	GOMACO		1989	MC16436-01	GOMACO GT-4300 WALL MACHINE
71.CM8022	POWER CURBER		2000	601208367	5700B POWER CURBER
71.CM8023	POWER CURBER		2006	57B03060131690	5700B POWER CURBER
71.CM8030	GOMACO			MC14947-40	GOMACO EC100C CURB EXTRUDER

ATTACHMENT " A "

Equipment	Manufacturer	Model	ModelYr	VINNumber	Description
71.PV7412	GOMACO	GT6300	1999	900100-249	GOMACO GT6300 SLIP PAVER
71.PV7413	GOMACO	GT6300		MC1135901	GOMACO CURB MACHINE
71.PV8401	TERRAMITE	100	2005	26R50102	TERRAMITE SCREED CONCRETE
74.DR8402			2009	135214	FURUKAWA HCR1200-ED HYDRAULIC DRILL
74.DR8403			2009	1352182	FURUKAWA HCR1200-ED HYDRAULIC DRILL
76.AC7901	INGERSOLL RAND	EPE50	1998	CA0469	IR EPE50 AIR COMPRESSOR
76.AC8901	INGERSOLL RAND				INGERSOLL RAND 250 CFM AIR COMPRESSOR
88.J25C422				RCW16125	42" BUCKET FITS J25 W/C LINK
88.J30D661					66" BUCKET FITS J30 D LINKAGE
88.CS7200				K4361	ETNYRE CHIP SPREADER
88.CS8096					CONCRETE SAW
88.GP7106				5500V	GPS PAVER TRACKER SYSTEM
88.GP8010	TRIMBLE				TRIMBLE GPS BASE D6N LGP, SN0900 RAD
88.GP8011	TRIMBLE				TRIMBLE GPS BASE D6N LGP, SN0900 RAD
88.GP8101	TRIMBLE		2007		TRIMBLE GPS SPS850 BASE STATION
88.GP8103	TRIMBLE				TRIMBLE GPS GCS900 DUAL GRADER
88.GP8104					SPS802 ROVER/BASE
88.GP8105				49394022346	SPS802 ROVER/RADIO KIT
88.GP8106					GCS900 ACCUGRADE GPS SYSTEM/D6N ON DZ0042
88.GP8107					GCS900 ACCUGRADE GPS SYSTEM D8T ON DZ0072
88.GP8108					GCS900 ACCUGRADE GPS SYSTEM 14H GRADER MOUNTED ON GBR476
88.GP8109					GCS900 ACCUGRADE GPS SYSTEM D8T ON DZ0076
88.GP8110	SITECH	74100-732	2015		SITECH DUAL MS992 KIT ACCUGRADE
88.GP8111	SITECH	74100-732	2015		SITECH DUAL MS992 KIT ACCUGRADE
88.LP6010		LTC 4L		5570795	WACKER PORTABLE LIGHT PLANT
88.LP6011				901553	NIGHT HAWK LTI2 PORTABLE LIGHT PLANT
88.LP6012				20077	TEREX PORTABLE LIGHT PLANT
88.LP6013				071407	MAGNUM PORTABLE LIGHT PLANT
88.LP6014				71405	MAGNUM PORTABLE LIGHT PLANT
88.LP7010	ALLMAND	695	2001	0037M101	ALLMAND 695 LIGHT PLANT-2001
88.LP7011	LIGHTSOURCE			328208	LIGHTSOURCE LIGHT PLANT
88.LP7012	ALLMAND			2023PRO06	ALLMAND LIGHT PLANT
88.LP7013	ALLMAND			2027PRO06	ALLMAND LIGHT PLANT
88.LP7014	WACKER	LTP4	1999	763601086	LTP4 WACKER LIGHT PLANT-1999
88.LP8010			1991		ALLMAND LIGHT PLANT
88.LP8011			1991		ALLMAND LIGHT PLANT
88.LP8012			1992		ALLMAND LIGHT PLANT
88.LP8013			1992		ALLMAND LIGHT PLANT
88.LP8014			2007	1266FR008	ALLMAND LIGHT PLANT
88.LP8015			2007	1267FR008	ALLMAND NL6 LIGHT PLANT
88.LP8090					REMOTE LIGHTING SYSTEM PELICAN 9450B LIGHT SYSTEM
88.MM8010	FECON	BR40-EXC-1-J-SDV	2015	00BH40E010155	2015 FECON MULCHING HEAD ATTACHMENT
88.MM6230	INGERSOLL RAND	UP6-25-125	2006	PX6404U06030	INGERSOLL RAND AIR COMPRESSOR ( SHOP )
88.MM7100	CATERPILLAR	3406		4ZR02672	3406 CATERPILLAR GEN SET
88.MM7101	CATERPILLAR	SR4B		8ER01441	CAT SR4B GENERATOR SET
88.MM7102	CATERPILLAR			5NA03908	CAT GENERATOR SET
88.MM7250					ORANGE CRUSH-PAVEMENT BREAKER
88.MM7259	PINE	AFGIA		1348	AFGIA GYRATORY COMPACTOR



ATTACHMENT " A "

Equipment	Manufacturer	Model	ModelYr	VINNumber	Description
88.MM7260	PINE	AFGIA		1076	AFGIA GYRATORY COMPACTOR
88.MM7262	PINE	AFGIA		1197	AFGIA GYRATORY COMPACTOR
88.MM7263	PINE	AFGIA		1320	AFGIA GYRATORY COMPACTOR
88.MM7278	ALTEC	CX30ATD	2000	93CX00492	ALTEC CX30ATD PLANER
88.MM7547	RIVINIUS	R600B	1994	6B94286	RIVINIUS R600B BASE SPREADER
88.MM7548	RIVINIUS	R600B		6B96318	RIVINIUS R600B BASE SPREADER
88.MM7549	N/A	N/A	N/A	7T3497	18' DRAG BOX 92.1-140
88.MM7550	ROME			TRH2436	ROME DISC
88.MM7621					PITTSBURG PLANT TOOLS & EQUIPMENT
88.MM7623					MOUNT VERNON PLANT TOOLS & EQUIPMENT
88.MM7624					WILLIAMSBURG PLANT TOOLS & EQUIPMENT
88.MM7680					ATS SOUTHERN SHOP TOOLS & EQUIPMENT
88.MM7681					ATS SOUTHERN SHOP MISC TRUCKS
88.MM7682					ATS SOUTHERN LAB EQUIPMENT
88.MM7683					ATS SOUTHERN MISC EQUIP
88.MM8000					TROXLER 3450 GAUGE
88.MM8001			2001	608436	HUSQVARNA 395XP CHAIN SAW
88.MM8002				064000051	HUSQVARNA 3120XP CHAIN SAW
88.MM8004			2007	0200069	HUSQVARNA 570 CHAIN SAW
88.MM8005			2010	092000597	HUSQVARNA 346XP 20" CHAIN SAW
88.MM8006			2010	092200779	HUSQVARNA 346XP 20" CHAIN SAW
88.MM8008			2005	1300264	HUSQVARNA 3635P 18" CHAIN SAW
88.MM8009			2010	080300094	HUSQVARNA 570 20" CHAIN SAW
88.MM8010				7HVX0505EA	HUSQVARNA 346XP CHAIN SAW
88.MM8011	STIHL	MS362/20		282963150	STIHL 20" CHAIN SAW
88.MM8012	STIHL	MS310/18		278307936	STIHL 18" CHAIN SAW
88.MM8013	STIHL	MS391/20		293275712	STIHL 20" CHAINSAW MS391
88.MM8014	STIHL	HS131		294355029	STIHL HEDGETRIMMER HS131
88.MM8015	STIHL	MS391		286645836	STIHL CHAIN SAW
88.MM8016	STIHL				STIHL CHAIN SAW
88.MM8049	STIHL	TS420			STIHL TS420 CUT OFF SAW
88.MM8050	STIHL	TS420-14	2015	179618251	STIHL 14" TS420 CUT-OFF SAW
88.MM8051			2002	46969006	STIHL TS350 CONCRETE SAW
88.MM8052			2004	160876653	STIHL TS400 CONCRETE SAW
88.MM8053			2004	160876641	STIHL TS400 CONCRETE SAW
88.MM8055			2006	64689721	STIHL TS400 CONCRETE SAW
88.MM8056			2008	168364515	STIHL TS420 CONCRETE SAW
88.MM8057			2009	170507606	STIHL TS420 CONCRETE SAW
88.MM8058			2009	170507683	STIHL TS420 CONCRETE SAW
88.MM8059				165437698	STIHL TS400 14" CONCRETE SAW
88.MM8060			2010	170678666	STIHL TS420 14" CONCRETE SAW
88.MM8061				168364559	STIHL TS420 CONCRETE SAW
88.MM8062			2007	167970357	STIHL TS420 CONCRETE SAW
88.MM8063				170678665	STIHL TS420 14" CONCRETE SAW
88.MM8065				166063292	STIHL TS400 14" CONCRETE SAW
88.MM8067				167466184	STIHL CONCRETZ SAW
88.MM8068					STIHL CONCRETE SAW
88.MM8069					STIHL TS420 CONCRETE SAW

ATTACHMENT " A "

Equipment	Manufacturer	Model	ModelYr	VINNumber	Description
88.MMB070	STIHL				STIHL TS420 CONCRETE SAW
88.MMB071				1677972495	STIHL TS420 14" CONCRETE SAW
88.MMB072					STIHL TS400 CONCRETE SAW
88.MMB073				167104371	STIHL CONCRETE SAW
88.MMB074				173069202	STIHL TS 420 CONCRETE SAW
88.MMB075				173069254	STIHL TS 420 CONCRETE SAW
88.MMB076				173069258	STIHL TS 420 CONCRETE SAW
88.MMB077	STIHL			173216454	STIHL TS420 CONCRETE SAW
88.MMB078	STIHL			173283056	STIHL TS420 CONCRETE SAW
88.MMB079				175082827	STIHL TS420 CONCRETE SAW
88.MMB080				175082888	STIHL TS420 CONCRETE SAW
88.MMB081	STIHL			168683177	STIHL TS420 CONCRETE SAW
88.MMB082	STIHL	TS420		176153729	STIHL 14" QUICKSAW
88.MMB083	STIHL	TS420		176153723	STIHL 14" CUTQUIK SAW
88.MMB084	STIHL	TS420		177739210	STIHL 14" CONCRETE SAW
88.MMB085	STIHL	TS420		170507689	STIHL TS420 CUT-OFF SAW
88.MMB086	STIHL	TS420	2015	179697887	STIHL TS420 CONCRETE SAW
88.MMB087	STIHL	TS420	2015	179697877	STIHL TS420 CONCRETE SAW
88.MMB097	CHAMPION	42432	2015	15JUN2700161	CHAMPION GENERATOR
88.MMB098	CHAMPION	42432	2015	15JUN2700158	CHAMPION GENERATOR
88.MMB099	GENERAC	DX2000		7715887C	GENERAC DX2000 GENERATOR
88.MMB100			2010	EZGA-1212161	HONDA EU1000I GENERATOR
88.MMB102				EZGA-1150513	HONDA EU1000 GENERATOR
88.MMB103				EZGA-1151496	HONDA EU1000 GENERATOR
88.MMB104				1017118	HONDA 3800 GENERATOR
88.MMB105			2002	3154229	HONDA EB 3500X GENERATOR
88.MMB106			2005	1011875	HONDA EG3000 XA GENERATOR
88.MMB107			2005	1006811	HONDA EB3800 GENERATOR
88.MMB108			2009	CHM1520360	HUSKY 5000W GENERATOR
88.MMB109				1412364	HUSKY 5000W GENERATOR
88.MMB110				4765119	HONDA GENERATOR
88.MMB112				EAAJ-1863405	HONDA EU2000 GENERATOR
88.MMB113				EAJC 1011871	HONDA GENERATOR
88.MMB114			2003	CHM 1520388	HUSKY 5000W GENERATOR
88.MMB115				38000W161612	ALL POWER 6000W GENERATOR
88.MMB116	MULTI-QUIP			5559742	MULTI-QUIP GA 2.5H GENERATOR
88.MMB117	MULTI-QUIP			5559738	MULTI-QUIP GA 2.5H GENERATOR
88.MMB118	HONDA			GCM-804923	HONDA GENERATOR
88.MMB119	MULTI-QUIP	3600		5560040	MULTIQUIP3600 GA 3.6 KA GENERATOR
88.MMB120		GSH-200303		0000001 UA01	INGERSOLL-RAND GENERATOR
88.MMB121				00124672 UA01	INGERSOLL-RAND GSH GENERATOR
88.MMB122	MULTI-QUIP		2009	5620293	MULTI-QUIP 2500 GENERATOR
88.MMB123				EAAJ-1863405	HONDA EV2000 INVERTER
88.MMB124	MULTI-QUIP		2007	5559742	MULTI-QUIP 2500 WATT GENERATOR
88.MMB125	MULTI-QUIP		2007	5559825	MULTI-QUIP 2500 WATT GENERATOR
88.MMB127	HONDA		2001	3150924	HONDA EB3500X GENERATOR
88.MMB128	UNITED POWER				UNITED POWER 5500 WATT GENERATOR
88.MMB129	HONDA			3161999	HONDA EB3500 GENERATOR

ATTACHMENT " A "

Equipment	Manufacturer	Model	ModelYr	VINNumber	Description
88.MMB130		APQ3009		39008X23043	ALL POWER 6000 WATT ELECTRIC GENERATOR
88.MMB131				8004350	GENERATOR, 1700 WATT INVERTER
88.MMB132				8004368	GENERATOR, 1700 WATT INVERTER
88.MMB134	HONDA	EU10001		EZGA-1255899	HONDA GENERATOR EU10001
88.MMB135	HONDA	EU1000		EZGA-1255813	HONDA GENERATOR
88.MMB136	HONDA	EU 1000		EAAJZ946560	HONDA GENERATOR
88.MMB137	HUSKY	5000		1411672	HUSKY GENERATOR 5000
88.MMB138	HUSKY	5000		1399182	HUSKY GENERATOR 5000
88.MMB139	PREDATOR	4000		370151416	PREDATOR 4000 GENERATOR
88.MMB140	PREDATOR	8750		T57A14100048979	PREDATOR 8750 GENERATOR
88.MMB141	MQ POWER	GA-2.5HR		5739263	MQ POWER GENERATOR GA-2.5HR
88.MMB142	PREDATOR	6500		A1410000124	6500 WATT PREDATOR GENERATOR
88.MMB143	PREDATOR	6500		A1410000003	6500 WATT PREDATOR GENERATOR
88.MMB144	PREDATOR	6500		A1410000123	6500 WATT PREDATOR GENERATOR
88.MMB145	PREDATOR	6500		A1410000136	6500 WATT PREDATOR GENERATOR
88.MMB151				98013	1 1/2 PACIFIC HYDROSTAR WATER PUMP
88.MMB152		SPA 1 1/2 - ET		D10268	1 1/2 SUBMERSIBLE WATER PUMP
88.MMB153			2002	40450	THOMPSON 6V 800 WATER PUMP
88.MMB154			2008	1424063	GORMAN RUPP 6" WATER PUMP
88.MMB155		ST 2037		423942	1 1/2 SUBMERSIBLE WATER PUMP
88.MMB156		QP-3TH		3TH-16405	MULTQUIP 3" WATER PUMP
88.MMB157		QP-3TH		3TH-16406	MULTQUIP 3" WATER PUMP
88.MMB158				D10819	1 1/2 SPA SUBMERSIBLE WATER PUMP
88.MMB159		10625		GC 82-721376	2" NORTH STAR HIGH PRESSURE WATER PUMP
88.MMB160		PTJA		5451038	WACKER 3" WATER PUMP
88.MMB161			1998	562630	1 1/2 SUBMERSIBLE WARREN WATER PUMP
88.MMB162				366152	MULTQUIP ST2005CUL 2" SUBMERSIBLE WATER PUMP
88.MMB163		S 1 1/2 BS-E33		1293543	GORMAN-RUPP WATER PUMP
88.MMB164				152 FAPL09D18655	1 1/2 PACIFIC HYDROSTAR WATER PUMP
88.MMB165			2004	5469971	WACKER 4" WATER PUMP
88.MMB167	WACKER	PTJA		5012195	WACKER PTJA WATER PUMP
88.MMB168	MULTQUIP	QP2TH		3429	MULTQUIP 2" WATER PUMP
88.MMB169	THOMPSON PUMP	6TSC-514	2011	1T9PH1212BP634031	6" THOMPSON PUMP
88.MMB200	HUSQVARNA	3100		1031427737	HUSQVARNA 3100 PRESSURE WASHER
88.MMB201				274109351	STIHL BR550 BLOWER
88.MMB202				282723347	STIHL BC36 BLOWER
88.MMB204				104462	TROY-BILT BLOWER
88.MMB205	STIHL	BR550		292689729	STIHL BACKPACK BLOWER
88.MMB206		BR600		299157481	BR600 BACKPACK BLOWER
88.MMB207	STIHL	BR600		302124703	STIHL BR600 BACKPACK BLOWER
88.MMB208	STIHL	BR600		504727759	STIHL BR600 BACKPACK BLOWER
88.MMB211				67369	MILLER TRAILBLAZER 301G WELDER
88.MMB212			2004	1250-008314	MILLER 1250 HYPERTHEM POWERMAX 150 WELDER
88.MMB213			2002	LC 46408	MILLERMATIC 251 MIG WELDER
88.MMB214				LH 160111Q	TRAILBLAZER 302 WELDER
88.MMB215			2007	LH 470036Q	MILLER 302 TRAILBLAZER WELDER
88.MMB216			2005	LF 113178 STK907	MILLER 302 TRAILBLAZER WELDER
88.MMB217			2007	LH 180137Q	MILLER 302 TRAILBLAZER WELDER



ATTACHMENT " A "

Equipment	Manufacturer	Model	ModelYr	VINNumber	Description
88.MMB218			2007	LH 420120Q	MILLER 302 TRAILBLAZER WELDER
88.MMB219			2006	LG 028735	MILLER BOBCAT 225 WELDER
88.MMB220			2007	LH 400243V	MILLER SUITCASE XTREME 12VS WELDER
88.MMB221			2007	LH 400266V	MILLER SUITCASE XTREME WELDER
88.MMB222				LE 318337	MILLER SUITCASE 12VS WELDER
88.MMB223	LINCOLN	VANTAGE 500	2015	U1141001215	LINCOLN VANTAGE 500 WELDER
88.MMB224	MILLER	WILDCAT 200		LK180025R	MILLER WILDCAT 200 WELDER
88.MMB230	BOSCH	11304			BOSCH ELECTRIC JACK HAMMER
88.MMB231		J-11JHS-9P		03280626	J-AIR COMPRESSOR
88.MMB232				176389U09329	INGERSOLL-RAND 185 AIR COMPRESSOR
88.MMB233				004-133589	SULLAIR 375 AIR COMPRESSOR
88.MMB234					ATLAS COPCO 175 AIR COMPRESSOR
88.MMB235					INGERSOLL-RAND 150 AIR COMPRESSOR
88.MMB236				HOL 6030	ATLAS COPCO 185 AIR COMP
88.MMB237	JENNY	U10B-120	2004	D093004020	EMGLO AIR COMPRESSOR W/ GX630 HONDA ENGINE
88.MMB251					CONCRETE VIBRATOR
88.MMB252					CONCRETE VIBRATOR
88.MMB253					CONCRETE VIBRATOR
88.MMB254					CONCRETE VIBRATOR
88.MMB255					CONCRETE VIBRATOR
88.MMB256					CONCRETE VIBRATOR
88.MMB257					CONCRETE VIBRATOR
88.MMB258					CONCRETE VIBRATOR
88.MMB259	WACKER NEUSON	WP1550	2015	30101096	WACKER PLATE COMPACTOR
88.MMB260	MULTIQUIP	MVC 88GH		1589	MULTIQUIP PLATE COMPACTOR
88.MMB261		BX-80WH		TG1576	INGERSOLL-RAND PLATE COMPACTOR
88.MMB262					MIKASA P180 PLATE COMPACTOR
88.MMB263		77 Z6033			MIKASA PLATE COMPACTOR
88.MMB264				6667245	WACKER WP1550 PLATE COMPACTOR
88.MMB265					INGERSOLL-RAND PLATE COMPACTOR
88.MMB266					MIKASKA TAMPER PLATE COMPACTOR
88.MMB267		MVC-90H		J 8313	MIKASA SANGYO SKID COMPACTOR
88.MMB268	WACKER	VF1550A		6320330	WACKER SKID COMPACTOR
88.MMB269		B 560		5465157	WACKER TAMPER
88.MMB270		MVC-90H		F4227	MIKASA PLATE COMPACTOR
88.MMB271			2009	5848732	WACKER BFS202DAS FLOOR SAW
88.MMB272			2010	02100010209	HUSQVARNA FLOOR SAW
88.MMB273		24002A		162011203	TAMP VIBRATOR PLATE
88.MMB274		WP 1550		6657613	WACKER PLATE COMPACTOR
88.MMB275		XH840		172003411	STONE RAMMER (JUMPEN JACK)
88.MMB276				66010	ALITEC CP24AT PLANER
88.MMB277					CAT PC204
88.MMB278		PC 205		R0G 00208	MILLING HEAD SKID STEER ATTACHMENT
88.MMB279				3902980404	MILLING HEAD SKID STEER ATTACHMENT
88.MMB280				R0G 00116	MILLING HEAD SKID STEER ATTACHMENT
88.MMB281		210-JSRA	2003	52994	EZ DRILL
88.MMB282		PC 205		R0G 00208	MILLING HEAD SKID STEER ATTACHMENT
88.MMB284				16647	VERMEER V-450 TRENCHER PORTABLE

ATTACHMENT " A "

Equipment	Manufacturer	Model	ModelYr	VINNumber	Description
88.MMB285					VERMEER 1250 WOOD CHIPPER
88.MMB286	INGERSOLL	BK-80WH		TG1502	INGERSOLL RAND PLATE COMPACTOR
88.MMB313				VF1096	TOPCON PIPE LASER
88.MMB314				VF1242	TOPCON PIPE LASER
88.MMB315				33866	TYPE 150
88.MMB316				4900-9592	LASER LB-10
88.MMB317		L500C		53031	SPECTRA TRIMBLE PRECISION
88.MMB318	TRIMBLE	DG 711		22612	TRIMBLE SPECTRA PRECISION PIPE LASER
88.MMB319	TRIMBLE	DG 711		24331	TRIMBLE PRECISION PIPE LASER
88.MMB320	TRIMBLE	DG711		26257	TRIMBLE DG711 PIPE LASER
88.MMB321	SPECTRA	DG711		31992	SPECTRA DG711 PIPE LASER
88.MMB336	KENCO	KL20000		SF05051707-A-9	KENCO BARRIER WALL TONGS
88.MMB337	KENCO	KL20000		SF19121712A9	KENCO BARRIER WALL TONGS
88.MMB341			2004		TRIMBLE M5750
88.MMB342	TRIMBLE		2004		TRIMBLE M5750
88.MMB343	TRIMBLE				GPS M5750 CONTROLLER
88.MMB357	TRIMBLE				GPS TSC2 CONTROLLER
88.MMB359					GPS CONTROLLER SSC25A6665 (SS25A17794 SC11.32)
88.MMB433					TOPCAN BLAWKNOX PAVR ELECTRONICS
88.MMB434				10320570/13020563	TOPCON 5500V SYST V2 TRACKER
88.MMB464	TRIMBLE				TRIMBLE SITEVISION
88.MMB471		89720		139257	BROOM SKID STEER ATTACHMENT
88.MMB472		BA12		AZN02792	BROOM SKID STEER ATTACHMENT
88.MMB473		BP 180		DBP00675	BROOM SKID STEER ATTACHMENT
88.MMB474		AXA 18783		AZN01627	BROOM SKID STEER ATTACHMENT
88.MMB475		BA18		ACE00828	BROOM SKID STEER ATTACHMENT
88.MMB481		T9B		JAJ 9154	TRENCHER SKID STEER ATTACHMENT
88.MMB482		T9B		JAJ 00801	TRENCHER SKID STEER ATTACHMENT
88.MMB483		T9B		JAJ 1449	TRENCHER SKID STEER ATTACHMENT
88.MMB484		T9B		JAJ02009	TRENCHER SKID STEER ATTACHMENT
88.MMB486		163-4812		PRSS7G000260	BRUSH SKID STEER ATTACHMENT
88.MMB487		231-3275		PRSSDB001400	BLADE SKID STEER ATTACHMENT
88.MMB488		LR-18		ADP00595	ROCK SKID STEER ATTACHMENT
88.MMB489	KWIK-PIK	600		64-5-89	ROCK LOFTNESS SKID STEER ATTACHMENT
88.MMB490		65-M7-300		901B	LODGERING SKID STEER ATTACHMENT
88.MMB491				RCW 19399	FORK SKID STEER ATTACHMENT
88.MMB493	BURCHLAND	EZR		0707029	BURCHLAND MATERIAL ROLLER (SKID STEER ATTACHMENT)
88.MMB495		L78-300P 8071		B159747	DAVID WHITE TRANSIT LEVEL
88.MMB496		L78-300		10656	DAVID WHITE TRANSIT LEVEL
88.MMB497		L78-300 8070		A 502121	DAVID WHITE TRANSIT LEVEL
88.MMB498		L78-300		A57863	DAVID WHITE TRANSIT LEVEL
88.MMB499		300 OP		0804	DAVID WHITE TRANSIT LEVEL
88.MMB511	NAT'L BD 19362	2452		19480	CLEMCO ABRASIVE BLAST MACHINE
88.MMB515				129213VB62	IR BALLOON LIGHTS
88.MMB516				123387	IR BALLOON LIGHT
88.MMB517				0C008562	AIR STAR BALLOON LIGHT
88.MMB518					IR BALLOON LIGHT
88.MMB519	Hydra Power	CB24H50LC		1269760	Hydra Power Core Drill Mounted on Home Made Trailer

ATTACHMENT " A "

Equipment	Manufacturer	Model	ModelYr	VINNumber	Description
88.MM8530	AA			CL8685	IT28 FORKS 72"
88.MM8531					IT 28 LOADER FORKS
88.MM8532				C80383	IT 28 LOADER FORKS
88.MM8533				76021-1	IT 28 LOADER FORKS
88.MM8534				77142-01	IT 28 LOADER FORKS
88.MM8535	IT-28 LOADER FORKS			RCW 12391	IT FORKS
88.MM8536				RCW14475	IT FORKS
88.MM8547		REYNOLDS	2000	35632	REYNOLDS LS14 DRAG BOX
88.MM8548	Sdhl	TS420	2013	173773530	Cut Quick 14" Sdhl (Quick Saw)
88.MM8549	Sdhl	TS420	2013	173773516	Cut Quick 14" Sdhl (Quick Saw)
88.MM8550	SNM	TS420	2013	173773536	Cut Quick 14" Sdhl (Quick Saw)
88.MM8551	STIHL	TS420	2013	176153539	CUTQUIK 14" STIHL SAW TS420
88.MM8552	STIHL	TS420		177781790	STIHL 14" CUTQUIK SAW
88.MM8553	MASTER	MH75T-KFA	2014	14H033963	MASTER 75K BTU DIESEL FORCED AIR HEATER
88.MM8554	MASTER	MH75T-KFA		14H010731	MASTER 75K BTU DIESEL FORCED AIR HEATER
88.MM8555	MASTER	MH75T-KFA		14H010708	MASTER 75K BTU DIESEL FORCED AIR HEATER
88.MM8556	MASTER	MH75T-KFA		14H033960	MASTER 75K BTU DIESEL FORCED AIR HEATER
88.MM8557	MASTER	MH75T-KFA		14H010600	MASTER 75K BTU DIESEL FORCED AIR HEATER
88.MM8558	MASTER	MH75T-KFA		14H024769	MASTER 75K BTU DIESEL FORCED AIR HEATER
88.MM8559	MASTER	MH75T-KFA		14H033945	MASTER 75K BTU DIESEL FORCED AIR HEATER
88.MM8560	MASTER	MH75T-KFA		14H054002	MASTER 75K BTU DIESEL FORCED AIR HEATER
88.MM8561	MASTER	MH75T-KFA		14H024071	MASTER 75K BTU DIESEL FORCED AIR HEATER
88.MM8562	MASTER	MH75T-KFA		14H024639	MASTER 75K BTU DIESEL FORCED AIR HEATER
88.MM8563	MASTER	MH75T-KFA		14H0246736	MASTER 75K BTU DIESEL FORCED AIR HEATER
88.MM8564	MASTER	MH75T-KFA		14H054003	MASTER 75K BTU DIESEL FORCED AIR HEATER
88.MM8565	MASTER	MH75T-KFA		14H023996	MASTER 75K BTU DIESEL FORCED AIR HEATER
88.MM8566	MASTER	MH-75T-KFA	2015	14H015842	MASTER 75K BTU DIESEL FORCED AIR HEATER
88.MM8567	MASTER	MH-75-T-KFA		14H015840	MASTER 75K BTU DIESEL FORCED AIR HEATER
88.MM8568	MASTER	MH-75T-KFA		14H083356	MASTER 75K BTU DIESEL FORCED AIR HEATER
88.MM8569	MASTER	MH-75T-KFA		14H081251	MASTER 75K BTU DIESEL FORCED AIR HEATER
88.MM8570	MASTER	MH-75T-KFA		14H015849	MASTER 75K BTU DIESEL FORCED AIR HEATER
88.MM8571	MASTER	MH-75T-KFA		14H080723	MASTER 75K BTU DIESEL FORCED AIR HEATER
88.PB7991	MCPHERSON	M40F	2003	0503430	MCPHERSON M40F PIT BURNER-2003
88.PB8901					PIT BURNER
88.PL8925	TOPCON		2004	VF0442	TOPCON TPLAGV
88.PL8930	TOPCON		2006	VF1251	TOPCON PIPE LASER TPLAGV
88.PL8931	TOPCON		2009	VF1704	TOPCON TP-LAGC PIPE LASER
88.PL8936				0532	AGTEC GRADE LASER
88.RL8102	RAMMAX		1999	325581	RAMMAX RW1404 ROLLER
88.RL8103	RAMMAX		2001	330887	RAMMAX P33HMR ROLLER
88.RL8148	WACKER	RT825C	2006	5645229	WACKER TRENCH ROLLER
88.SB7901	FINN	B260TD	1999	2755RB	FINN B260TD STRAW BLOWER-1999
88.SB8901			1991	5D2933	FINN B70 BALE STRAW BLOWER
88.SE6001			2007	83070177	5300 BTU PRESSURE WASHER
88.SE6104				1301248	DIAMON CORE SAW MOUNTED ON TK
88.SE6930	TRIMBLE		2008	3417JD115M	TRIMBLE GPS MACHINE
88.TR8850		830		98-321	MOBILE OFFICE TRAILER
88.TR8856				GWCUZ56591	STORAGE CONTAINER / OFFICE

ATTACHMENT " A "

<u>Equipment</u>	<u>Manufacturer</u>	<u>Model</u>	<u>ModelYr</u>	<u>VINNumber</u>	<u>Description</u>
88.TR8874				DS10RZS1009	STORAGE CONTAINER
88.TR8875				KKTU-760131	STORAGE CONTAINER
88.TR8876				KKTU-713500	STORAGE CONTAINER
88.TR8877		20' SDN		PW47296	STORAGE CONTAINER
88.TR8878		20' ALUMINUM		PWD2041	STORAGE CONTAINER
88.TR8879		20' SD		PW200470	STORAGE CONTAINER
88.TR8880		20' SD		PW26215	STORAGE CONTAINER
88.WB8960					CONCRETE FLOOR SAW
88.WP7919				1156063	GR 16C-F4L912 WATER PUMP
88.WP8919	THOMPSON	6V 880	2002	4045D	THOMPSON 6V 880 WATER PUMP 6"
88.WP8928			2008	1424063	GORMAN RUFF 6" WATER PUMP
88.WT6303					WATER TANK FOR TRUCK
88.WT6304					WATER TANK FOR TRUCK 4000 GA
88.WT6305			2015	T422	WATER TANK FOR TKA305
88.WT8720					WASTE OIL TANK 1000 GAL



Certificate No.  
A - 2017  
01847

### Certificate of Eligibility

Issued By  
Commonwealth of Kentucky  
Transportation Cabinet

This certifies that **L-H ASPHALT PARTNERS LTD DBA ATS CONSTRUCTION**  
**3009 ATKINSON AVENUE SUITE 400**  
**LEXINGTON, KY 40509**

is hereby qualified to accept a contract or subcontracted on projects of the Department of Highways for such a period as uncompleted work under prime contract at any time does not exceed the aggregate amount of **UNLIMITED**. This certificate which expires **December 31, 2017** is subject to revision or revocation, and is extended to 120 days from this expiration date. An application for renewal of this certificate must be filed within ninety days after the above date.

### Types of Work

- A GRADE AND DRAIN
- B PORTLAND CEMENT CONCRETE PAVING
- C1 ASPHALT PAVING OPTION B
- C2 ASPHALT PAVING OPTION A
- E1 BRIDGES NOT MORE THAN 70 FT. CLEAR SPAN

Date issued: April 13, 2017

By

FOR

State Highway Engineer  
Department of Highways

**ATTACHMENT " B "**

**L-M Asphalt Partners, Ltd. dba ATS Construction**

Internal Project Number	Type Of Work	Award Date	Owner's Name Prime Contractors Name	Joint, Prime Or Sub	Total Amount		Completion Date
					Of Contract	Subcontract	
6500	HMA Paving	04/06	Bluegrass Airport Phase IIIA Bluegrass Airport Board	Prime	\$	13,390,641.53	12/06
6524	HMA Paving	03/06	Keenland Race Track and Parking Area Central Rock Mineral Company	Sub	\$	765,727.05	09/06
6525	Agg/HMA	04/06	Sayre Athletic Complex Sayre School - Owner	Prime	\$	208,785.24	12/06
6526	Agg/HMA	04/06	Blackford Unit 1 Phase 3 Ball Homes - Owner	Prime	\$	208,908.48	12/06
6527	Agg/HMA	04/06	Still Meadow Property Elza Reclamation and Construction Company	Sub	\$	110,473.09	12/06
6529	Agg/HMA	05/06	Lowe's of Lexington Gloffre Companies, Inc.	Sub	\$	386,500.00	12/06
6532	Agg/HMA	05/06	The Reserve at Tates Creek Central Rock Mineral Company - Prime	Sub	\$	86,072.31	12/06
6533	Agg/HMA	05/06	University of Kentucky Shively Field Parking University of Kentucky	Prime	\$	103,538.28	07/06
6538	HMA Paving	05/06	US Post Office Parking Lot Rehabilitation Three R Construction Company, Ltd.	Sub	\$	126,162.18	09/06
6543	Agg/HMA	05/06	Newtown Springs - Claxton Boulevard Rosenstein Development - Owner	Prime	\$	622,129.30	12/06
6545	Agg/HMA	05/06	Newtown Springs Phase 1 Central Rock Mineral Company - Prime	Sub	\$	215,049.93	12/06
6548	Agg/HMA	07/06	War Admiral Retail Center Madden Development - Owner	Prime	\$	662,948.71	12/07
6550	HMA Paving	07/06	LFUCG 2006-2007 Resurfacing LFUCG - Owner	Prime	\$	5,315,576.81	07/07
6556	Agg/HMA	10/06	Sunny Slope - Phase 7 Ball Homes - Owner	Prime	\$	230,743.40	12/07
6558	Agg/HMA	12/06	Geas Property Phase 2 Central Rock Mineral Company - Prime	Sub	\$	156,277.19	12/07

**ATTACHMENT " B "**

**L-M Asphalt Partners, Ltd. dba ATS Construction**

Internal Project Number	Type Of Work	Award Date	Owner's Name Prime Contractor's Name	Joint, Prime Or Sub	Total Amount		Completion Date
					Of Contract	Or Subcontract	
6559	HMA Paving	8/06	LFUCG - 2006-2007 County Roads LFUCG - Owner	Prime	\$	325,659.23	06/07
6560	Agg/HMA	10/06	Polo Club Blvd Expansion The Walker Company of Kentucky	Sub	\$	430,782.78	10/06
6561	Agg/HMA	06/06	Wright Station Subdivision Anderson Communities - Owner	Prime	\$	124,882.90	12/06
6562	Agg/HMA	06/06	Newtown Springs Townhomes Central Rock Mineral Company - Prime	Sub	\$	96,191.42	12/06
6563	HMA Paving	04/06	RJ Corman Farm Roads RJ Corman Railroad Company	Prime	\$	255,974.41	10/06
6568	HMA Paving	04/06	Vulcan Central Quarry Site Improvement Vulcan Materials	Prime	\$	124,171.72	10/06
6571	Grade & Drain/Concrete	10/07	KYTC (Eaton Asphalt) Grant Co. I-75 IM NH 75-6 (96) / 07-1151	Sub	\$	8,975,813.19	-
6573	Grade & Drain/Concrete	10/07	KYTC (Eaton Asphalt) Grant Co. I-75 IM NH 75-6 (95) 146 / 07-1149	Sub	\$	21,326,077.35	-
6574	Grade & Drain/Concrete HMA/Agg	8/07	KYTC Fayette Co. I-75/I-64 IM 75 -4 (61) / 07-1156	Prime	\$	24,331,325.22	-
6575	Grade & Drain/Concrete HMA/Agg	7/07	KYTC Fayette Co. Liberty/Todds Rd. DPR 0035 (00-6) / 07-1127	Prime	\$	7,490,784.24	-
6576	Grade & Drain/Concrete HMA/Agg	3/07	KYTC Fayette Co. I-75/I-64 IM 75-4(59) / 07-1022	Prime	\$	14,067,638.49	-
6577	Grade & Drain/Concrete	11/06	KYTC Scott Co. I-75 I 75-6 (93) 138 / 06-1055	Prime/JV	\$	49,880,219.04	-
6578	Grade & Drain/Concrete	11/06	KYTC (Eaton Asphalt) Grant Co. I-75 IM NH 75-6 (94) 151 / 06-1257	Sub	\$	3,145,633.95	-
6579	Grade & Drain/Concrete	10/06	Newtown Pike Design Build 06-9002	Prime	\$	11,025,931.51	-
6580	Grade & Drain/Concrete	7/06	KYTC Fayette Co. I-75/I-64 IM 75 -4(57)110 / 06-1038	Prime	\$	25,070,242.99	-



**ATTACHMENT " B "**

**L-M Asphalt Partners, Ltd. dba ATS Construction**

Internal Project Number	Type Of Work	Award Date	Owner's Name Prime Contractors Name	Joint, Prime Or Sub	Total Amount Of Contract Or Subcontract	Completion Date
6582	Grade & Drain/Concrete	11/05	KYTC Scott Co. US62 STPR 5198 (005) / 05-1237	Prime	\$ 10,886,025.17	-
6583	Grade & Drain/Concrete	9/05	KYTC Kenton Co. Turkeyfoot Rd. PH III STPM 8122(21) / 05-1142	Prime	\$ 14,570,168.48	-
6584	Grade & Drain/Concrete	8/05	KYTC Kenton Co. KY 17 & KY 16 FD04 059 0017 009-016 / 05-1137	Prime	\$ 7,830,839.13	10/08
6585	Grade & Drain/Concrete	6/05	KYTC (Eaton Asphalt) Grant Co. I-75 IM NH 75-7(124) / 05-1127	Sub	\$ 12,259,743.04	-
6707	Agg/HMA	03/07	Fayette County In-Place Maintenance James Mitchell II	Prime	\$ 211,906.17	03/08
6713	Agg/HMA	07/07	Fayette County Public Schools Fayette County Board of Education	Prime	\$ 170,357.67	07/08
6726	HMA Paving	04/07	2007 Spring City Resurfacing LFUCG - L. McMillian	Prime	\$ 12,514,323.15	07/08
6727	Agg/HMA	03/07	LFUCG Saultary & Storm Sewers Bluegrass Contracting Corporation	Sub	\$ 177,652.88	11/07
6730	HMA Paving	05/07	Clark Properties Unit 1 Phase 2 Woodall Construction Company	Sub	\$ 154,867.24	12/08
6733	HMA Paving	05/07	St. Joseph East Parking Area Lenco Excavation Inc.	Sub	\$ 106,585.56	12/07
6736	HMA Paving	06/07	Woolridge Subdivision Woodall Construction Company	Sub	\$ 807,099.80	12/09
6738	Aggregate	06/07	East Reynolds & Lansdowne Drive LFUCG - Engineering	Prime	\$ 313,503.29	12/07
6739	Agg/HMA	10/06	Providence Place Parkway Anderson Communities - Owner	Sub	\$ 311,493.16	12/07
6746	Agg/HMA	08/07	Bluegrass Aspendale LFUCG - Housing Authority	Sub	\$ 549,335.00	12/07
6750	HMA Paving	03/07	Glenages Unit 1 Phase 2 Bell Homes - Owner	Sub	\$ 109,794.00	12/07
6752	Agg/HMA	03/07	Myers Property Bell Homes - Owner	Prime	\$ 161,178.02	12/07



**ATTACHMENT " B "**

**L-M Asphalt Partners, Ltd. dba ATS Construction**

Internal Project Number	Type Of Work	Award Date	Owner's Name Prime Contractors Name	Joint, Prime Or Sub	Total Amount Of Contract Or Subcontract	Completion Date
6753	HMA Paving	07/07	LFUCG 2007-2008 County Roads LFUCG - Streets & Reads	Prime	\$ 452,590.00	07/08
6754	Agg/HMA	10/07	JM Smucker Plant Load Dock Area JM Smucker Company	Prime	\$ 198,760.00	11/07
6757	Agg/HMA	09/07	Cigar Lane - KY Horse Park Bluemass Contracting Corporation	Sub	\$ 610,730.00	06/08
6759	HMA Paving	09/07	St Joe East Parking Lot Leanco Excavation Inc.	Sub	\$ 153,417.25	12/07
6760	Agg/HMA	10/07	Paul Miller Ford Parking Area Paul Miller Ford	Prime	\$ 133,465.00	12/07
6767	Grade & Drain/Concrete HMA/Agg	11/07	KYTC Fayette Co. NH 268-2 (005) / 07-1178	Prime	\$ 6,134,884.34	-
6769	Agg/HMA	10/07	Meadows/Northland/Arlington LFUCG	Prime	\$ 93,739.03	12/08
6603	Grade & Drain	10/07	Providence Place Parkway Anderson Communities - Owner	Prime	\$ 1,087,534.00	12/08
6595	Grade & Drain, HMA	09/07	Geas Parcel 6 Bell Homes - Owner	Prime	\$ 1,397,626.00	12/08
6592	Grade & Drain, HMA	09/07	Mahan Subdivision Bell Homes - Owner	Prime	\$ 2,519,071.00	12/08
6591	Grade & Drain, HMA	09/07	Mahan Apartments RML LLC	Prime	\$ 765,141.49	12/08
6572	Grade & Drain, HMA	09/07	Starshoot Parkway LFUCG	Prime	\$ 1,862,373.00	12/08
6509	Grade & Drain, HMA	10/07	Louden Avenue LFUCG	Prime	\$ 4,759,990.02	12/08
6782	Grade & Drain, HMA	11/07	Greendale Hills Bell Homes - Owner	Prime	\$ 1,392,261.00	12/08
6781	Grade & Drain, HMA	10/07	Keene Manalton Keeneland	Prime	\$ 372,019.00	12/08
6783	Grade & Drain/Concrete	10/07	KYTC Boone Co. KY 237 STPR 8200 (008) / 07-1161	Prime	\$ 23,021,750.82	-

**ATTACHMENT " B "**

**L-M Asphalt Partners, Ltd. dba ATS Construction**

Internal Project Number	Type Of Work	Award Date	Owner's Name Prime Contractors Name	Joint, Prime Or Sub	Total Amount		Completion Date
					Of Contract	Or Subcontract	
6799	Grade & Drains/Concrete HMA/Agg	9/07	KYTC Cumberland Co. KY90-KY61 DB 0290900741 / 07-9041	Prime/JV	\$ 53,167,878.16		-
6807	Agg/HMA	03/08	Fayette County In-Place Maintenance James Mitchell II	Prime	\$ 1,024,218.00		03/09
6813	Agg/HMA	07/08	Fayette County Public Schools Fayette County Board of Education	Prime	\$ 294,563.75		07/09
6820	Grade & Drain	01/08	Noland Phase 6 Redevelopment JAH Nicholasville Investments	Prime	\$ 367,488.15		12/08
6822	Grade & Drain	03/08	Paved Trail Unit Price 2008 LFUCG	Prime	\$ 257,484.05		12/08
6846	Grade & Drain, HMA	04/08	Saint Joseph Hospital Temp Parking Area Congleton-Hacker Company	Sub	\$ 292,371.00		12/08
6847	Grade & Drain, HMA	04/08	Glens @ Greendale Phase 1 & 2 Beezer Homes, Inc.	Sub	\$ 135,195.98		12/08
6848	Concrete, Grade, Drain, HMA	06/08	Bluegrass Airport Taxiway D Relocation Bluegrass Airport Board	Prime	\$ 2,513,797.85		12/08
6850	Grade & Drain, HMA	08/08	Hamburg East Polo Club Blvd Silver Oaks Real Estate Investment	Prime	\$ 5,382,472.00		07/09
6851	Grade & Drain, HMA	09/08	Bluegrass Airport Runway 9-27 Phase 1 Bluegrass Airport Board	Prime	\$ 5,341,135.71		08/09
6852	Agg/HMA	09/08	Value Place Hotel RHS General Contractor, LLC	Prime	\$ 143,598.95		06/09
6872	HMA Paving	03/08	Tates Creek Apartments Asphalt Consults, Inc.	Prime	\$ 130,803.09		05/08
6874	Agg/HMA	12/08	LFUCG - Lexington Meadows Northland Arlington MAC Construction & Excavating	Prime	\$ 281,037.93		07/09
6877	HMA Paving	06/08	Sand Lake & Eates Property Elza Reclamation and Construction Company	Prime	\$ 110,630.20		06/08
6880	HMA Paving	03/08	2008 Spring City Resurfacing LFUCG - L. McMillian	Prime	\$ 1,860,850.95		12/08
6882	Agg/HMA	07/08	Saint Joseph East Maternity Ward Leaco Excavation Inc.	Sub	\$ 188,856.95		06/09

**ATTACHMENT " B "**

**L-M Asphalt Partners, Ltd. dba ATS Construction**

Internal Project Number	Type Of Work	Award Date	Owner's Name Prime Contractors Name	Joint, Prime Or Sub	Total Amount		Completion Date
					Of Contract	Or Subcontract	
6885	Agg/HMA	06/08	Shelbourne Plaza WS Construction	Sub	\$	404,751.91	06/09
6888	HMA Paving	09/08	Marshall Property Unit 2 Town Homes Anderson Communities - Owac	Prime	\$	194,483.50	06/09
6889	HMA Paving	07/08	LFUCG 2008-2009 County Roads LFUCG - Streets & Roads	Prime	\$	1,278,160.00	12/08
6890	HMA Paving	10/08	2008 Fall City Street Resurfacing LFUCG - S. Williams	Prime	\$	1,347,174.25	06/09
6891	HMA Paving	08/08	Lexmark International Lexmark International	Prime	\$	197,450.00	12/08
6895	HMA Paving	03/08	2008/2009 City Street Resurfacing LFUCG - S. Williams	Prime	\$	5,320,640.10	12/09
2627	Grade & Drains/Concrete	9/06	KYTC Fayette Co. US 60 Westmoreland Ent. FD04 034 0060 000-001 / 06-2231	Prime	\$	258,515.29	3/07

# ATTACHMENT " C "

## Work In Progress

Contracts	Description	Contract Amount	Billings To Date	Work Remaining To Complete
614100.	FAYETTE - KY 4 NEW CIRCLE ROAD EXPANSION CID 141291	43,309,969.18	40,810,895.60	2,499,073.58
614101.	FAYETTE - US 60 INTERCHANGE CID 141291	13,467,000.78	12,479,812.22	987,188.56
614107.	SCOTT CO - I-75 INTERCHANGE CID 141079	28,906,802.44	24,624,095.63	4,282,706.81
615070.	FAYETTE- NEWTOWN PIKE EXTENSION- PHASE 2 (KY 922) CID:151260	20,943,180.06	18,502,002.28	2,441,177.78
615071.	TODDS ROAD EXPANSION (KY 1927) - FAYETTE - CID: 151057	10,465,746.88	9,559,850.95	905,895.93
615600.	KY-363 AND KY-1006 ROUNDABOUT CID141064	345,026.03	103,147.14	241,878.89
615609.	LAUREL COUNTY CID 152226 LONDON TO CORBIN ROAD(US 25) - JPC	128,500.00	66,706.70	61,793.30
616193.	NEWTOWN PIKE, TODD'S ROAD, AND SPURR ROAD CID 162318	397,024.50	0.00	397,024.50
616501.	I-75 REHABILITATION - ROCKCASTLE CO - CID: 161210	2,043,302.40	1,844,882.57	198,419.83
616506.	CUMBERLAND LAKE PKWY (KY 461)ROCKCASTLE CO. FD05 102.0461 0	765,483.95	710,148.91	55,335.04
616507.	MAIN STREET (KY296) - WHITLEY CO. FD05 118 0296 001-	189,510.10	156,011.03	33,499.07
616509.	HAL ROGERS PKWY (KY80) FD05 063 0080 004-0 CID: 162106	1,277,334.93	1,186,293.44	91,041.49
616510.	LAUREL CO. KY472/KY2389 063 GR16 P037-FD05 CID:162096	321,881.09	296,966.60	24,914.49
616511.	ROCKCASTLE CO-VARIOUS ROUTES-102GR16000R015-CB06 CID:163117	529,509.10	491,395.92	38,113.18
616516.	LAUREL CO - HAL ROGERS PARKWAY 063 GR16 T010-HSIP	452,691.23	430,890.07	21,801.16
616519.	CLAY CO. LONDON-MANCHESTER RD (KY638) CID 164115	143,929.05	136,816.35	7,112.70

# ATTACHMENT " C "

## Work In Progress

Contracts	Description	Contract Amount	Billings To Date	Work Remaining To Complete
616520.	LAUREL CO - VARIOUS ROUTES - 063GRI6000R25-CB06 CID: 163125	984,521.48	904,988.25	79,533.23
616522.	RICHMOND ROAD (US 421) CLAY CO. STP BRO 4211 (039)CID:161035	266,663.20	132,048.54	134,614.66
616523.	BEECH CREEK ROAD (CR 1004) STP BRZ 1103 (307) CID:161237	165,035.00	26,547.56	138,487.44
616524.	I-75 LAUREL CO. NHPP IM 0752 (090) CID: 161044	8,606,130.88	361,889.20	8,244,241.68
616525.	VARIOUS ROUTES WHITLEY CO. 118 GR 16 R070-CB0 CID: 163166	940,720.20	913,254.52	27,465.68
616526.	RICHMOND RD (US421) CLAY-FD05 026 0421 017-021 CID: 162267	828,526.85	359,571.95	468,954.90
616527.	VARIOUS ROUTES -CLAY 026 GR 16 R018-CB06 CID: 163120	790,455.22	727,589.56	62,865.66
616535.	OLD KY30 (KY 3094) LAUREL CO. CID-162274- 063GRI6P102-FD05	672,598.50	74,942.72	597,655.78
616540.	VARIOUS ROUTES IN LAUREL CO. 063 GR 16 P108-FD05 CID 162294	201,445.40	0.00	201,445.40
617001.	I-75 ROCKCASTLE CID 161270 NHPP IM 0753 (092)	31,120,557.36	2,352,353.45	28,768,203.91
617110.	BRYAN STATION ROAD (KY 57) CID 172069 FAYETTE	148,460.50	0.00	148,460.50
617500.	KNOX CO.-VARIOUS ROUTES-061 GR 16 R071-CB06 CID 163305	185,483.00	0.00	185,483.00
617501.	TOBACCO RD (KY354) LAUREL- FD05 063 0354 000-002 CID 172043	115,902.69	0.00	115,902.69
617502.	S. WILDERNESS ROAD (US25) FD05 102 0025 004-012 CID 172050	949,150.58	0.00	949,150.58
617503.	KY 830 & US25 LAUREL CO. 063 GR 17 P22-FD05 CID 172075	546,895.55	0.00	546,895.55
	Total KYTC	\$ 170,209,438.13	\$ 117,253,101.16	\$ 52,956,336.97

# ATTACHMENT " C "

## Work In Progress

Contracts	Description	Contract Amount	Billings To Date	Work Remaining To Complete
616538.	WOODBINE-BARBOURVILLE RD (KY6) STP 5155 012 CID 162297	229,443.41	0.00	229,443.41
615029.	NEW FAYETTE CO HIGH SCHOOL	1,525,513.99	1,119,186.98	406,327.01
615084.	WILLIAMS PROPERTY PAVING	125,206.25	84,545.67	40,660.58
616022.	UPS GRADEWORK LOUISVILLE PAVING	3,028,868.00	2,543,375.00	485,493.00
616024.	UPS OFF SITE PARKING	1,613,077.00	1,466,584.88	146,492.12
616026.	LAKESHORE LEARN MATERIALS-GRAY	3,228,912.00	1,898,270.98	1,330,641.02
616156.	QUNATRELL - WOODALL	97,373.75	64,353.44	33,020.31
616160.	LFUCG - CITY STREET RESURFACING 2017 MAJOR MINOR ROUTES	6,752,957.40	5,244,186.90	1,508,770.50
616161.	LFUCG - CITY STREET RESURFACING 2017	1,071,040.00	0.00	1,071,040.00
616162.	BGAP - TAXIWAY A NORTH AIP 3-21-0028-XX BGA 1611	97,104.08	54,749.79	42,354.29
616166.	PLEASANT RIDGE SHOPPING CENTER - WOODALL	127,488.00	54,838.35	72,649.65
616170.	TATTON PARK TOWNHOMES	38,960.00	0.00	38,960.00
616172.	UPS PAVING CONTRACT - HUNT CONST	6,090,110.00	708,461.23	5,381,648.77
616173.	NEW MARKET UNIT 6 & 8 - WOODALL	287,050.00	7,618.64	279,431.36
616177.	HOLIDAY INN JUSTICE DRIVE - WOODALL	99,120.00	47,508.32	51,611.68
616180.	LFUCG - CITY STREET RESURFACING-RESIDENTIAL STREETS 2017	3,076,806.59	1,628,199.99	1,448,606.60

# ATTACHMENT " C "

## Work In Progress

Contracts	Description	Contract Amount	Billings To Date	Work Remaining To Complete
616195.	BLUEGRASS STATION - NEW ROADWAY	100,495.00	0.00	100,495.00
616539.	BEE CREEK ROAD (KY1193)STP 5383 002-CID162299 WHITLEY CO	269,939.56	0.00	269,939.56
616803.	KY HOTELIERS FAIRFIELD INN	114,976.50	0.00	114,976.50
616804.	ROCKCASTLE CO. HOSPITAL 28 BED ADDITION - D W WILBURN	166,105.50	24,275.00	141,830.50
616807.	STONERIDGE APARTMENTS	11,345.00	0.00	11,345.00
616809.	LONDON COMMUNITY CENTER NEW BUILDING	18,962.00	0.00	18,962.00
617003.	UK BASEBALL STADIUM CCK-2163	1,800,600.00	527,575.89	1,273,024.11
617010.	UK SOCCER PRACTICE FIELD	1,049,000.00	99,000.00	950,000.00
617011.	LFUCG - GRASS MEDIAN ON OLIVER LEWIS WAY	149,000.00	0.00	149,000.00
617012.	FEDEX - LEXMARK - LITHKO	320,312.50	0.00	320,312.50
617015.	BRIERCROFT RD DETENTION BASIN	16,150.00	0.00	16,150.00
617016.	LFUCG - BOILING SPRINGS- MEADOWTHORPE SIDEWALK	1,630.33	0.00	1,630.33
617017.	FEDEX FREIGHT - TANK EXCAVATION - RELIABLE CONSTRUCTION	38,000.00	0.00	38,000.00
617018.	LFUCG - MAN O' WAR BLVD AT ALUMNI DRIVE	438,872.04	0.00	438,872.04
617019.	LFUCG PARKS - WOLF RUN PARK	39,939.92	0.00	39,939.92
617021.	LFUCG - MENTELLE CURBS - REPLACE CURBING	91,592.07	0.00	91,592.07

# ATTACHMENT " C "

## Work In Progress

Contracts	Description	Contract Amount	Billings To Date	Work Remaining To Complete
617100.	MEADOWS NORTHLAND ARLINGTON SE & SF	281,269.50	0.00	281,269.50
617101.	NEW BLUEGRASS STOCKYARDS	2,147,689.25	0.00	2,147,689.25
617102.	LEXINGTON GREEN, LLC - EMERGENCY PATCHING	500.00	0.00	500.00
617103.	FCPS NEW HIGH SCHOOL TURN LANE	187,604.55	0.00	187,604.55
617104.	KAWC - RICHMOND ROAD CAMPUS 2017	421,948.70	143,825.20	278,123.50
617106.	HENRY CLAY - TOTAL CAMPUS OVERLAY	158,400.00	90,440.90	67,959.10
617107.	WINSTAR FARM - GREELEY PROPERTY ASPHALT OVERLAY	56,544.40	0.00	56,544.40
617109.	BROWN & KUBICAN, PSC PAVING - WOODALL	16,448.00	0.00	16,448.00
617111.	LFUCG - CITY STREET BASE FAILURES - PO: LF00146193	6,752,957.40	0.00	6,752,957.40
617116.	KY HORSE PARK - VARIOUS PATCHING 2017	10,810.00	8,649.20	2,160.80
617117.	KY HORSE PARK - WALNUT HILL ROAD	8,900.00	7,289.80	1,610.20
617118.	VULCAN QUARRY - UPGRADE PARKING AND DRIVE	74,552.50	0.00	74,552.50
617120.	BALL HOME- LISA BALL'S DRIVEWAY	11,597.00	0.00	11,597.00
617121.	WOODALL - FEDERAL COURT HOUSE	14,030.00	0.00	14,030.00
617700.	PEPSI CORBIN KY. J&H CONSTRUCTION	67,718.00	0.00	67,718.00
617702.	HUFFMAN & HUFFMAN EYE CARE	55,010.00	0.00	55,010.00



# ATTACHMENT " C "

## Work In Progress

Contracts	Description	Contract Amount	Billings To Date	Work Remaining To Complete
617703.	JOHN NEWCOMB DRIVEWAY	90,718.30	0.00	90,718.30
617704.	ERNIE'S SPRITTS	15,564.60	0.00	15,564.60
617705.	JOE TOMPAK DRIVEWAY	5,250.00	0.00	5,250.00
617709.	MCWHORTER CHURCH	18,000.00	0.00	18,000.00
617710.	CITY OF LONDON - VARIOUS STREETS 2017	276,370.00	0.00	276,370.00
617711.	KENNY DAVIS DRIVEWAY	13,201.00	0.00	13,201.00
617712.	SOUTHLAND DR LONDON UTILITY COMMISSION	3,864.00	0.00	3,864.00
	<b>Total Private</b>	<b>\$ 42,804,898.09</b>	<b>\$ 15,822,936.16</b>	<b>\$ 26,981,961.93</b>
	<b>Total KYTC and Private</b>	<b>\$ 213,014,336.22</b>	<b>\$ 133,076,037.32</b>	<b>\$ 79,938,298.90</b>



# Attachment " D "

L-M Asphalt Partners, Ltd. dba ATS Constuction

Principal Officers, Managers and Superintendents of the Originization

	<u>Name</u>	<u>Position</u>	<u>Years of Experience</u>	<u>Magnitude and Type of Work</u>	<u>Capacity</u>
1 )	Steve Lawson	President	20+	Highway Grading, Asphalt Paving and Utility Construction	Overall Company Administration
2 )	Brian R. Billings	Vice President	15+	Highway Grading, and Asphalts Paving Construction	Engineering
3 )	Harry L. Burchett	Vice President	30+	Highway Grading, and Utility Construction	Engineering
4 )	Richard L. Craycraft	Assistant Vice President	30+	Highway Grading, Asphalt Paving and Utility Construction	Engineering and Contract Administration
5 )	Paul Corum III	Secretary	10+	Highway Grading, Asphalt Paving and Utility Construction	Administration
6 )	Rodney Martin	CFO	15+	Highway Grading, Asphalt Paving and Utility Construction	Administration
7 )	Willard Mills	Superintendent	35+	Highway Grading, and Utility Construction	Field Superintendent
8 )	Kieth Vance	Superintendent	20+	Asphalt Paving	Field Superintendent
9 )	Sanmmy Lee	Superintendent	20+	Site Concrete	Field Superintendent

**COMMONWEALTH OF KENTUCKY TRANSPORTATION CABINET FRANKFORT, KENTUCKY  
PREQUALIFIED CONTRACTORS LIST**

6/14/17

<b>NAME AND ADDRESS OF CONTRACTORS</b>	<b>VENDOR</b>	<b>PRINCIPAL OFFICERS</b>	<b>MEMB</b>	<b>WORK CLASS</b>
<b>S &amp; M CONTRACTING LLC</b> 5979 HWY 711 WEST LIBERTY KY 41472 PHONE: (606)743-7090 FAX: (606)743-7090 MBARKER@MRTC.COM	03693	MELANIE BARKER STEVEN BARKER	MEMB MEMB	A E1 I27 I33
<b>SMITH CONTRACTORS INC</b> P O BOX 480 LAWRENCEBURG KY 40342 PHONE: (502)839-4196 FAX: (502)839-8348 VG@SCI82.COM	01150	KERRY A. SMITH LOU F SMITH VANDRA GUFFEY JOE SMITH	PR SEC TRES VP	A I05 I11 I12 I14 I24 I26 J44
<b>SOMETHIN BLOOMIN LLC</b> 1045 HIGBEE MILL ROAD LEXINGTON KY 40503 PHONE: (859)536-7668 SBLOOMIN@AOL.COM	03638	CINDY ENGLAND	MEMB	H I06
<b>SOUTHEAST GRINDING AND GROOVING LLC</b> P O BOX 279 115 VILLA ROSA ROAD TEMPLE GA 30179 PHONE: (404)803-5397 SFRAME@SEGRINDING.COM	03463	DIANA FRAME STEFAN FRAME	MEMB MEMB	I55 I85
<b>SOUTHERN KENTUCKY CONTRACTORS INC</b> 578 KELLY RD BOWLING GREEN KY 42101 PHONE: (270)782-8646 FAX: (270)846-3712 SWHITE681@AOL.COM	01589	RANDY WILSON BRANDON WILSON	PR VP	A E1 E2 I27
<b>SOUTHERN MARINE CONSTRUCTION CO</b> 100 HAMM ROAD CHATTANOOGA TN 37405 PHONE: (423)266-1855 FAX: (423)266-1858 STEVE@SERODINOINC.COM	00888	V P SERODINO, III M P WADE STEVE HAWTHORNE	PR SEC VP	I19 I20 I21 I22
<b>SOUTHERN PIPELINE CONSTRUCTION CO</b> 1272 OLD FERN VALLEY ROAD LOUISVILLE KY 40219 PHONE: (502)966-5195 FAX: (502)966-5122 BEVERLYG@SOUPIPE.COM	02035	ANEISA BLAIR BEVERLY GOEBEL	PR VP	I24 I33
<b>SOUTHERN ROAD &amp; BRIDGE LLC</b> 715 WESLEY AVENUE TARPON SPRINGS FL 34689 PHONE: (727)940-5385 FAX: (727)499-7158 KBEGLAN@SOUTHERNRB.COM	03589	CHRISTOPHER STAMAS LUCAS PAPPAS	MEMB MEMB	I16 I18B

Steven L. Beshear  
Governor

Michael W. Hancock, P.E.  
Secretary  
Kentucky Transportation Cabinet

# COMMONWEALTH OF KENTUCKY



## Transportation Cabinet

certifies that

SOMETHIN BLOOMIN, LLC

1855 Norfolk Drive, Lexington, KY 40503

*has met all eligibility requirements  
to participate in the*

*Disadvantaged Business Enterprise Program*

This certificate is issued pursuant to 49 CFR Part 26 and is subject to suspension or revocation.

A handwritten signature in black ink, appearing to be 'D. B. E.', written over a horizontal line.

DBE Liaison Officer

April 30, 2016

Renewal Date

**Kentucky**  
UNBRIDLED SPIRIT

CERTIFIED DISADVANTAGED BUSINESS ENTERPRISE (DBE) DIRECTORY

FIRM	TYPE OF WORK	DISTRICT	MACS CODE(S)
<p><b>SOME TIME SERVICES, LLC</b>                      Ms. Cindy England, Owner                      1045 Hipbone Hill Road                      Lexington KY 40503                      (606) 296-1664 or (606) 536-7668                      cEngland@some.com                      www.some.com</p>	<p>DBE</p> <p>Related Services: landscape maintenance, installation and design, mowing, snow removal and irrigation                      Prerequisite: landscaping, seeding and sodding</p>	7	561730
<p><b>SOTERIA HAULING &amp; EXCAVATING, LLC</b>                      Ms. Kathryn Kellams, Pres.                      PO Box 1305                      Bedford IN 47421                      (812) 563-2582 Fax (812) 278-3778                      soteriahauling@gmail.com</p>	<p>DBE</p> <p>Related Services: site preparation contractors, recyclable material merchant wholesalers, specialized trucks and other services to buildings and dwellings</p>	OOS	236910 423930 464220 561790
<p><b>SOUTHEAST STAR, INC.</b>                      Mrs. Aleemah Buttram, Pres.                      PO Box 851                      Goodlettsville TN 37070                      (615) 230-7848 Fax (615) 230-7848                      southeaststar@bellsouth.net</p>	<p>DBE</p> <p>Related Services: metal pen stain, rail and miscellaneous metals used in construction</p>	OOS	4231610
<p><b>SPARTAN CONSTRUCTION, INC.</b>                      Ms. Dianne Broesser, Pres.                      1819 Distribution Drive                      Burlington KY 41005                      (859) 374-3638 Fax (859) 374-2788                      dlbrosser@spectriconstruction.com</p>	<p>DBE</p> <p>Related Services: under drain and underground utilities, water, sewer PCC rehabilitation, miscellaneous concrete, miscellaneous asphalt, lighting, video inspection, underground construction, grade and drain, fire hydrant installation and electrical and concrete repairs</p>	5	237110 237310 238910 238980 541900
<p><b>SPECTRUM CONTRACTING SERVICES, INC.</b>                      Mr. Donnie Tucker, Pres.                      108 Wind Haven Drive, Sullia B                      Nicholasville KY 40356                      (877) 561-4657 or (866) 821-1853 Fax (877) 661-4657                      dtucker@spectricontract.com                      info@spectricontract.com                      www.spectricontract.com</p>	<p>DBE</p> <p>Prerequisite: grade and drain, demolition, concrete repairs, utilities, traffic control</p>		
<p><b>SPELDEL CONSTRUCTION, INC.</b>                      Ms. Donna J. Speidel, Pres.                      15463 Enterprise Way                      Culpeper VA 22701                      (540) 825-9680 or (888) 599-8031 Fax (540) 825-9088                      jrynde@claranunway.com                      www.claranunway.com</p>	<p>DBE</p> <p>Related Services: general contracting - site work, concrete work, masonry, carpentry, millwork, shingle roofing, caulking and sealants, insulation, doors and windows, finishes and accessories</p>	7	236220
<p><b>SPHER NEAL TRICARE SOLUTIONS</b>                      Ms. Diane Leigh Sage, Principal Partner                      1004 Aurora Avenue                      Lexington KY 40502                      (606) 979-4313 or (606) 327-1814                      diane.sage@sphera.com                      www.sphera.com</p>	<p>DBE</p> <p>Related Services: airfield marking contractor</p>	OOS	237310
<p><b>SPRINGFIELD PLUMBING, INC.</b>                      Mr. Robert A. Springs, Pres.                      1903 W. Market Street                      Louisville KY 40203                      (502) 587-8281 Fax (502) 587-8289                      springsplumbing@gmail.com</p>	<p>DBE</p> <p>Consultant: software consulting, project management, optimization, HER implementation and software education</p>	7	541611, 541612, 541613, 541618, 541611, 541110, 611420, 611430, 611710
<p><b>ST. JOHN TRUCKING, INC.</b>                      Ms. Janet S. John, Pres.                      3625 W. US Hwy. 50                      North Vernon IN 47265                      (812) 346-4824 Fax (812) 346-6418                      StJohntrucking@frontier.com</p>	<p>DBE</p> <p>Related Services: commercial and industrial plumbing</p>	8	237110 238230 238910
<p><b>ST. JOHN TRUCKING, INC.</b>                      Ms. Janet S. John, Pres.                      3625 W. US Hwy. 50                      North Vernon IN 47265                      (812) 346-4824 Fax (812) 346-6418                      StJohntrucking@frontier.com</p>	<p>DBE</p> <p>Related Services: dump trucks - aggregate, asphalt, dirt hauling; excavating equipment - site prep, excavation, demolition, building pads, etc.</p>	OOS	238910 464220

**COMMONWEALTH OF KENTUCKY TRANSPORTATION CABINET FRANKFORT, KENTUCKY  
PREQUALIFIED CONTRACTORS LIST**

6/14/17

<b>NAME AND ADDRESS OF CONTRACTORS</b>	<b>VENDOR</b>	<b>PRINCIPAL OFFICERS</b>	<b>PR</b>	<b>SEC</b>	<b>VP</b>	<b>WORK CLASS</b>
<b>LEGEND PAINTING INC</b> 468 PARK DRIVE CAMPBELL OH 44405 PHONE: (330)953-3264 FAX: (330)853-1035 LEDENDPAINTINGOHIO@HOTMAIL.COM	03846	ANDREAS TROUMOULIARIS JASON TEROVOLAS KALIOPY VAROULAS	PR SEC VP			118C
<b>LEN RIEGLER BLACKTOP INC</b> 19 LENDALE DRIVE FLORENCE KY 41042 PHONE: (859)371-8122 FAX: (859)371-8147 CHRISTI@RIEGLERBLACKTOP.COM	00837	DANIEL RIEGLER MICHAEL RIEGLER RONALD RIEGLER	PR SEC VP			C1 C2 I11 I13
<b>LEXINGTON BLACKTOP INC</b> 740 FOX INDUSTRIAL ROAD LEXINGTON KY 40504 PHONE: (859)255-7440 FAX: (859)254-6469 LEXINGTONBLACKTOP@GMAIL.COM	01554	JOHN W. MERRITT JR HIRAM R. NUCKOLS JR	PR VP			103 107
<b>LEXINGTON QUARRY COMPANY</b> 3009 ATKINSON AVE SUITE 300 LEXINGTON KY 40508 PHONE: (859)543-3361 FAX: (859)543-3362 KIM_MULDER@THEALLEN.COM	02067	STERLING ENTERPRISES INC. THE ALLEN COMPANY INC.	PAR PAR			A B C1 C2 E1 E2 I37 I38
<b>LIBERTY MAINTENANCE INC</b> 777 N MERIDIAN ROAD YOUNGSTOWN OH 44509 PHONE: (330)755-7711 FAX: (330)755-1847 CK@LIBERTYMAINTENANCEINC.COM	01418	EMANOUEL FRANGOS CHRISTINE KALIKATZAROS THEMELINA FRANGOS NIKOLAOS FRANGOS	PR SEC TRES VP			118A
<b>LINK ELECTRIC CO INC</b> 3817 FITZGERALD ROAD LOUISVILLE KY 40216 PHONE: (502)778-1155 FAX: (502)778-2868 RGLANE@LINK-ELECTRIC.COM	03384	RICK GEORGE JR	PR			126 J44 J90
<b>L-M ASPHALT PARTNERS LTD D/B/A ATS CONSTRUCTION</b> 3009 ATKINSON AVENUE SUITE 400 LEXINGTON KY 40508 PHONE: (859)223-7001 FAX: (859)231-0946 RMARTIN@ATSCONSTRUCTION.COM	01947	STEVEN L. LAWSON PAUL E. CORUM III RODNEY MARTIN BRIAN BILLINGS	PR SEC TRES VP			A B C1 C2 E1
<b>LONG FOUNDATION DRILLING CO</b> P O BOX 266 HERMITAGE TN 37076-0266 PHONE: (615)885-5664 FAX: (615)885-4863 VHINSLEY@LFDC.COM	01483	ROBERT B. LONG VICKY L. HINESLEY CHRISTOPHER W. LONG	PR SEC VP			121 180

**COMMONWEALTH OF KENTUCKY TRANSPORTATION CABINET FRANKFORT, KENTUCKY  
PREQUALIFIED CONTRACTORS LIST**

6/14/17

<b>NAME AND ADDRESS OF CONTRACTORS</b>	<b>VENDOR</b>	<b>PRINCIPAL OFFICERS</b>	<b>WORK CLASS</b>
<b>BLUEGRASS CONCRETE &amp; ASSOCIATES INC</b> 412 DONNELLEY DRIVE GLASGOW KY 42141 PHONE: (270)678-2003 FAX: (270)678-8087 SHERRI@BGAKY.COM	03524	DOUG READ SHANNON READ BILL GEIGER	PR 103 108 112 113 SEC 115 VP
<b>BLUEGRASS CONTRACTING CORPORATION</b> 1075 RED MILE RD LEXINGTON KY 40504 PHONE: (859)231-0069 FAX: (859)281-6457 BGCC@BLUEGRASSCONTRACTING.COM	00129	MARK W JOHNSON GINGER JOHNSON DAVE LUTTRELL JAMIE JOHNSON	PR A B C1 C2 SEC E1 E2 E3 I27 VP I28 VP
<b>BLUEGRASS PAVING INC</b> PO BOX 667 FLORENCE KY 41022 PHONE: (859)372-0076 FAX: (859)372-0074 TBRAKE@BLUEGRASSPAVING.COM	02804	JIM THOMAS BRUCE HUFF JOHN SCHUBERT	PR A B C1 C2 SEC 137 138 VP
<b>BLUEGRASS STREAM LLC</b> 259 THREE MILE RD BEATTYVILLE KY 41311 PHONE: (606)464-1004 FAX: (606)244-0281 MCHARLES@BLUEGRASSSTREAM.COM	02808	CHRISTOPHER N CHARLES JONATHAN M CHARLES MARCELLA J. CHARLES	MEMB 101 124 133 J41 MEMB J63 MEMB
<b>BMC CONTRACTING LLC</b> P O BOX 450 481 ADENA DRIVE MT STERLING KY 40353 PHONE: (859)499-2885 FAX: (859)499-4364 STEVE@BMCKY.COM	03608	DENNIS BONFIELD PATRICK D BONFIELD	MEMB A 136 J66 MEMB
<b>BOB RAY COMPANY INC</b> 723 LYNDON LANE LOUISVILLE KY 40222 PHONE: (502)425-7654 FAX: (502)425-7657 PAMP@BOBRAYCO.COM	02171	MARSHALL T. RAY PAMELA G. PETERS MARSHALL T RAY TONI RAY	PR 136 SEC TRES VP
<b>BOCA CONSTRUCTION INC</b> 380 EASTPARK DRIVE NORWALK OH 44857 PHONE: (419)868-5676 FAX: (419)863-0377 AIDAN@BOCACONSTRUCTIONINC.COM	01577	MICHAEL J. BOCKRATH JOSEPH J. CAIZZO KEITH T. WEATHERLY	PR 139 162 165 178 SEC 186 J31 J33 J53 VP J55 J64
<b>BOURNE-CLARK CONSTRUCTION LLC</b> 2070 WINCHESTER ROAD MOUNT STERLING KY 40353 PHONE: (859)498-0755 FAX: (859)498-0757 QBCLARK@BOURNE-CLARK.COM	03357	QUAINTANCE B CLARK	MEMB F 104 105 106 112 113 114