



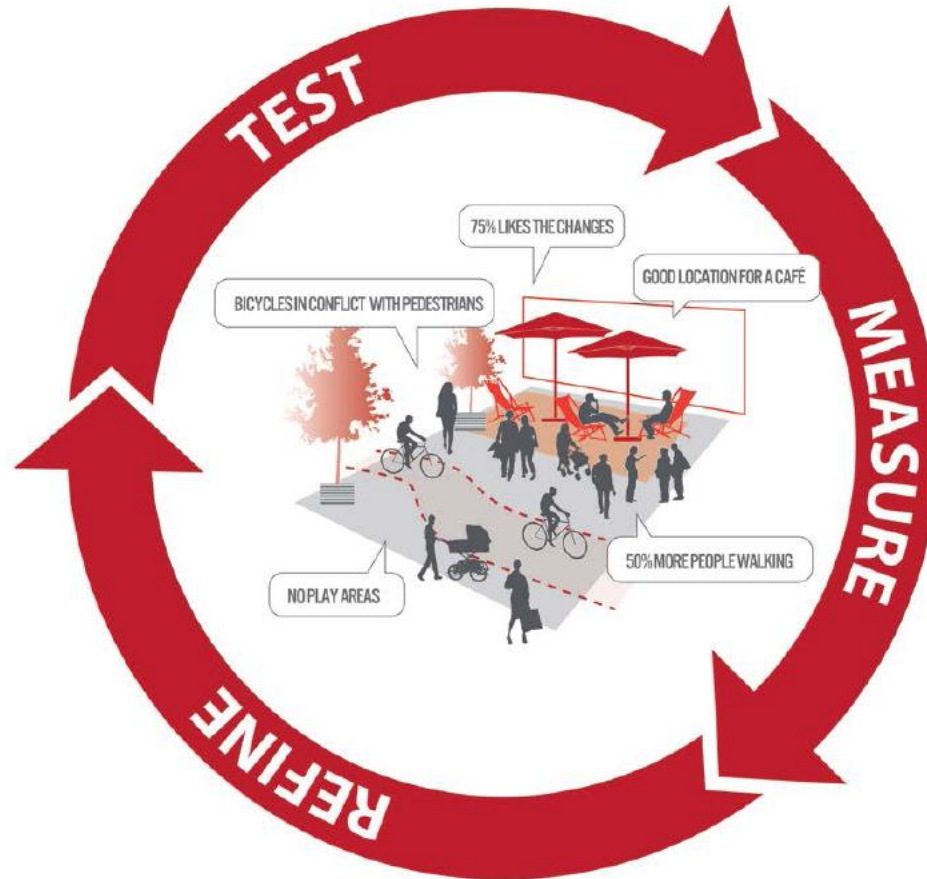
Short Street Pilot

Council Work Session

June 23, 2015

Brandi Berryman, Lexington Downtown Development Authority &
Dowell Hoskins-Squier, LFUCG Traffic Engineering

THE TRANSITIONAL CITY - LEARNING BY DOING



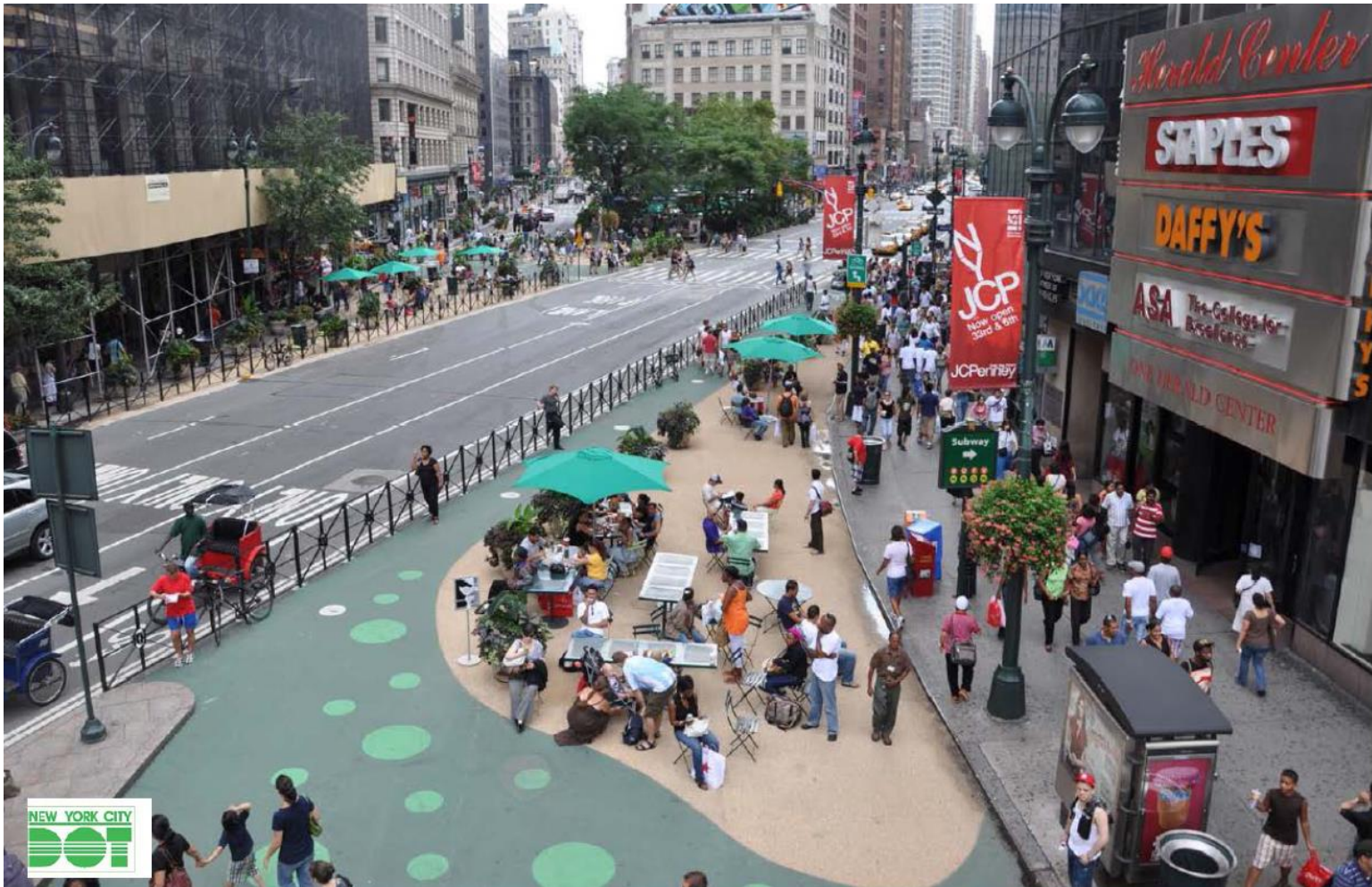
CITIZEN ENGAGEMENT & RE-IMAGINING THE CITY



NYC, Herald Square- Before



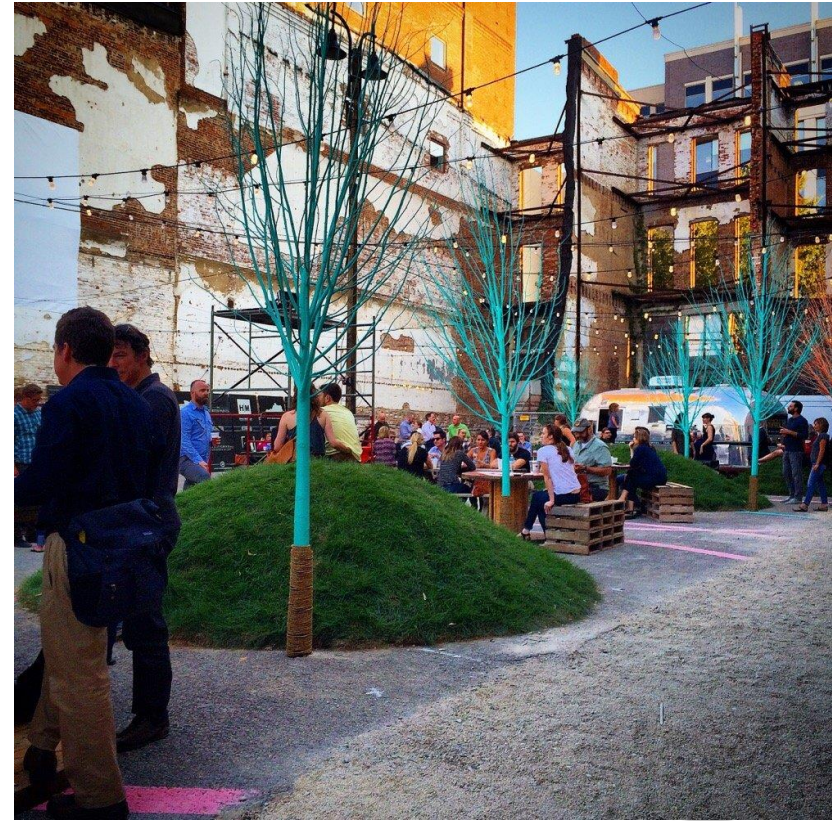
NYC, Herald Square- After



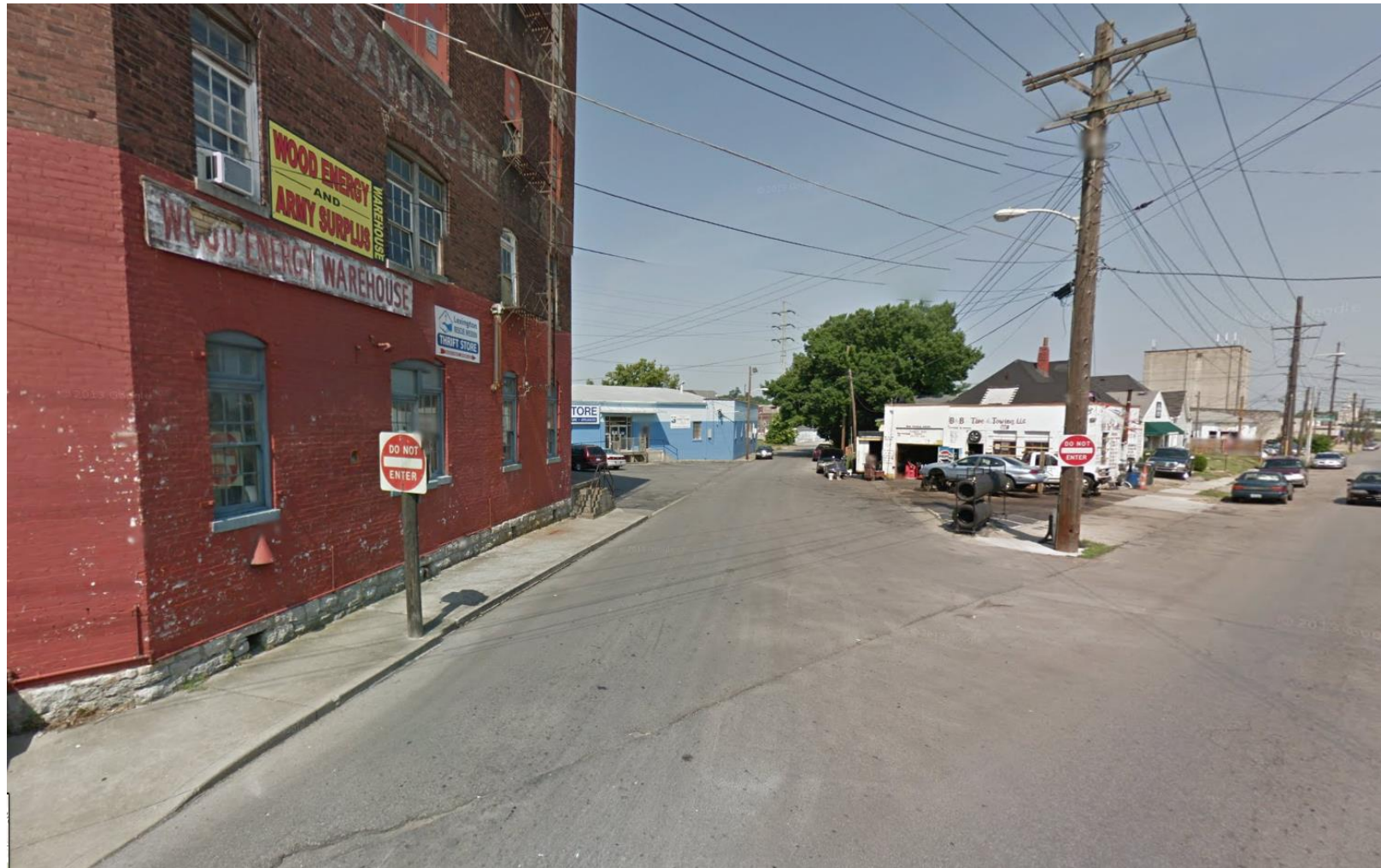
Louisville, Resurfaced- Before



Louisville, Resurfaced- After



Lexington, Night Market- Before



Lexington, Night Market- After



Short Street

Short Street District is the heart of downtown

- Home to numerous bars, restaurants, & the 5/3 Bank Pavilion
- Home to Thursday Night Live & Farmers' Market
- Is the hub for downtown attractions & nightlife
- Location of significant investment that is proposed and underway
- Set to be the center of the Breeder's Cup Festival



SHOPPING



PAVILION & EVENTS



RESTAURANTS & BARS



REDEVELOPMENT

Opportunities:

Short Street offers many opportunities for enhancement that will provide a better environment. Goals are to maximize function, safety, and aesthetics while providing for all modes of transportation.



LOADING ISSUES



CRAMPED SIDEWALKS



**NOT WELCOMING TO
PEDESTRIANS**



**TRASH CROWDING
STREET**

With the pilot project we have the opportunity to easily and affordably test proposed enhancements on Short Street while putting a spotlight on downtown Lexington during summer and through Breeder's Cup.



Design Features



**ADD VISUAL INTEREST &
BUFFER WITH PLANTERS**



**EXPAND SIDEWALK
CAFES**



**PAINT ROAD FOR
SIDEWALK WIDENING**



Design Features



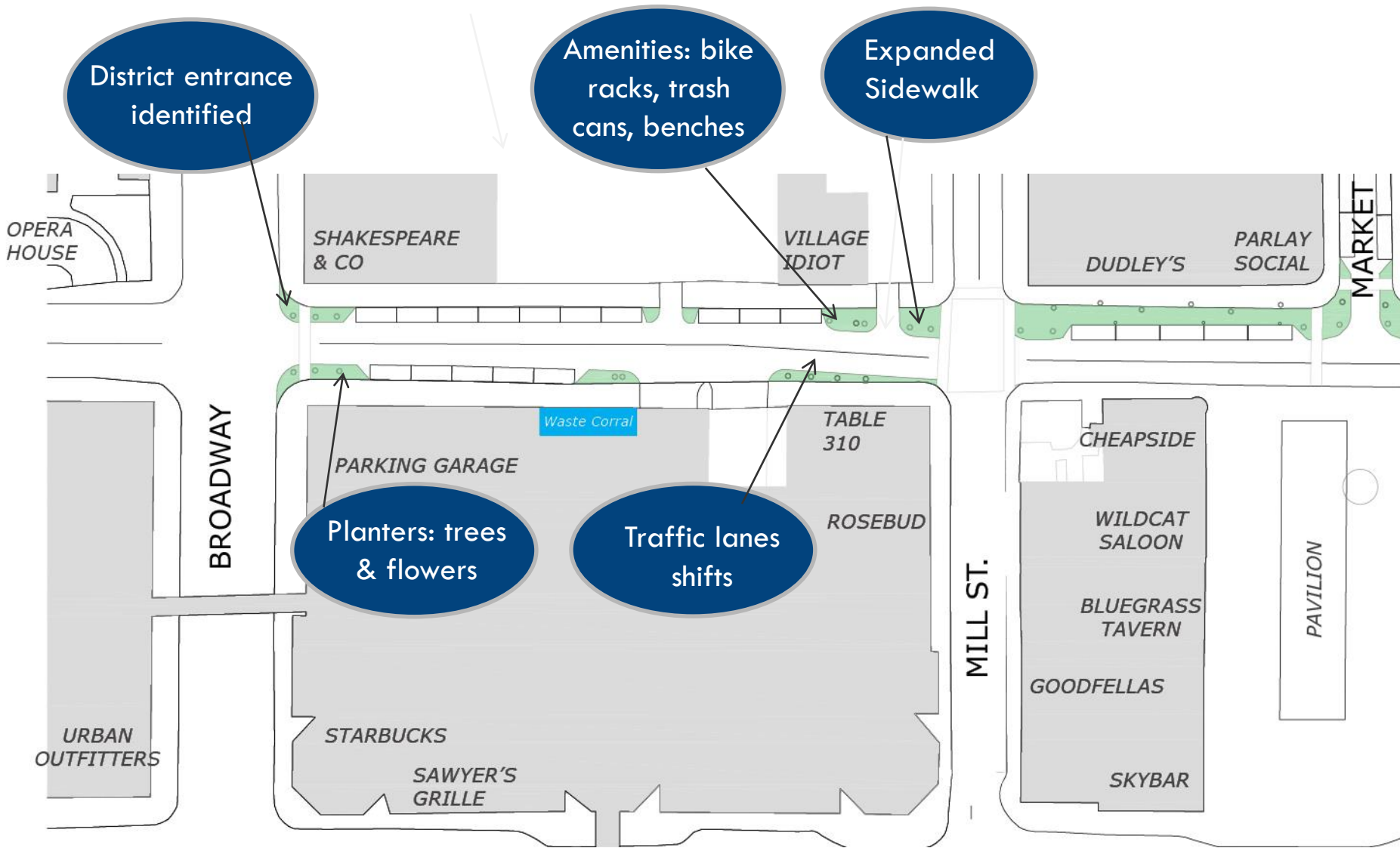
Hide herbie receptacles in wrapped corral

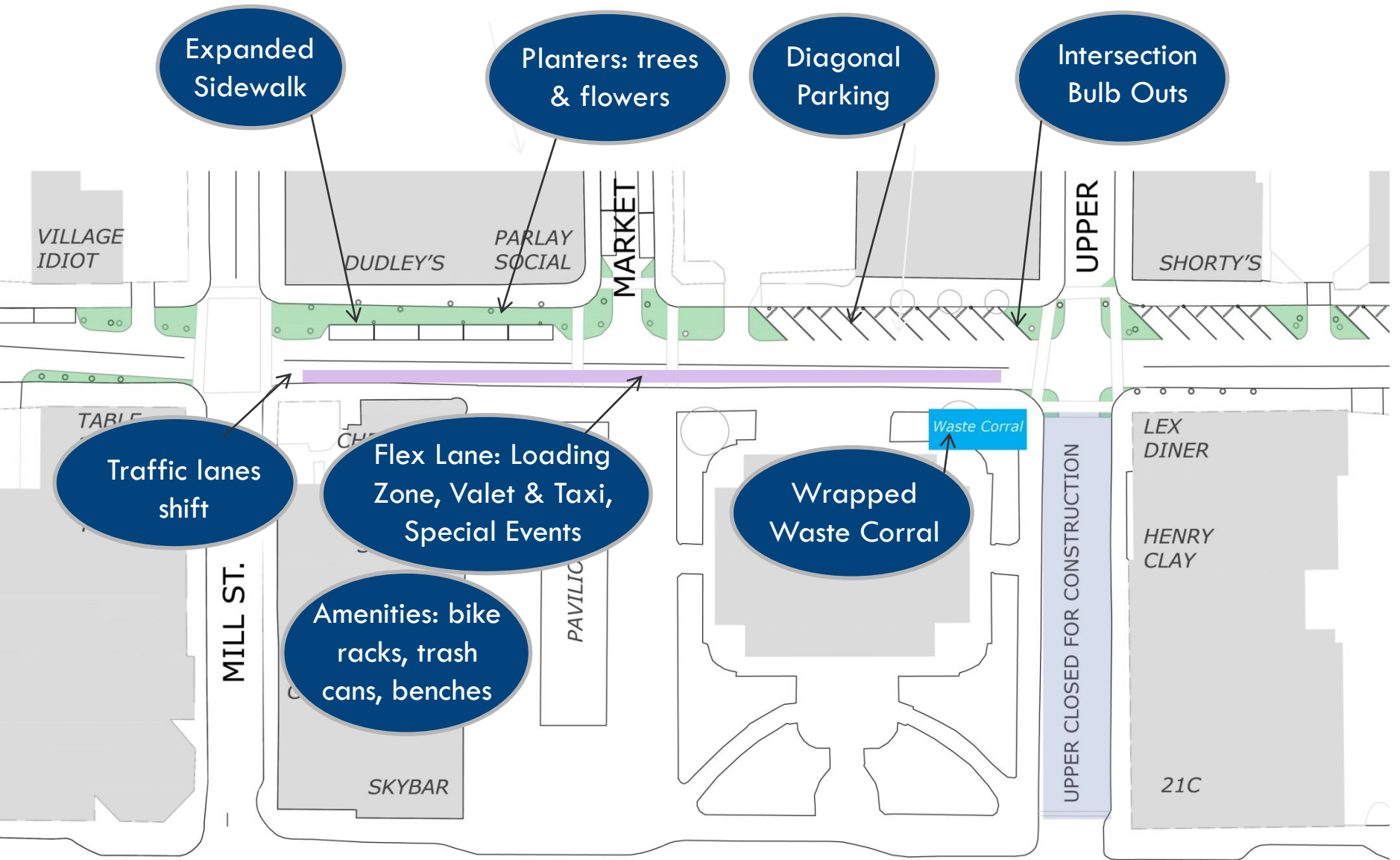


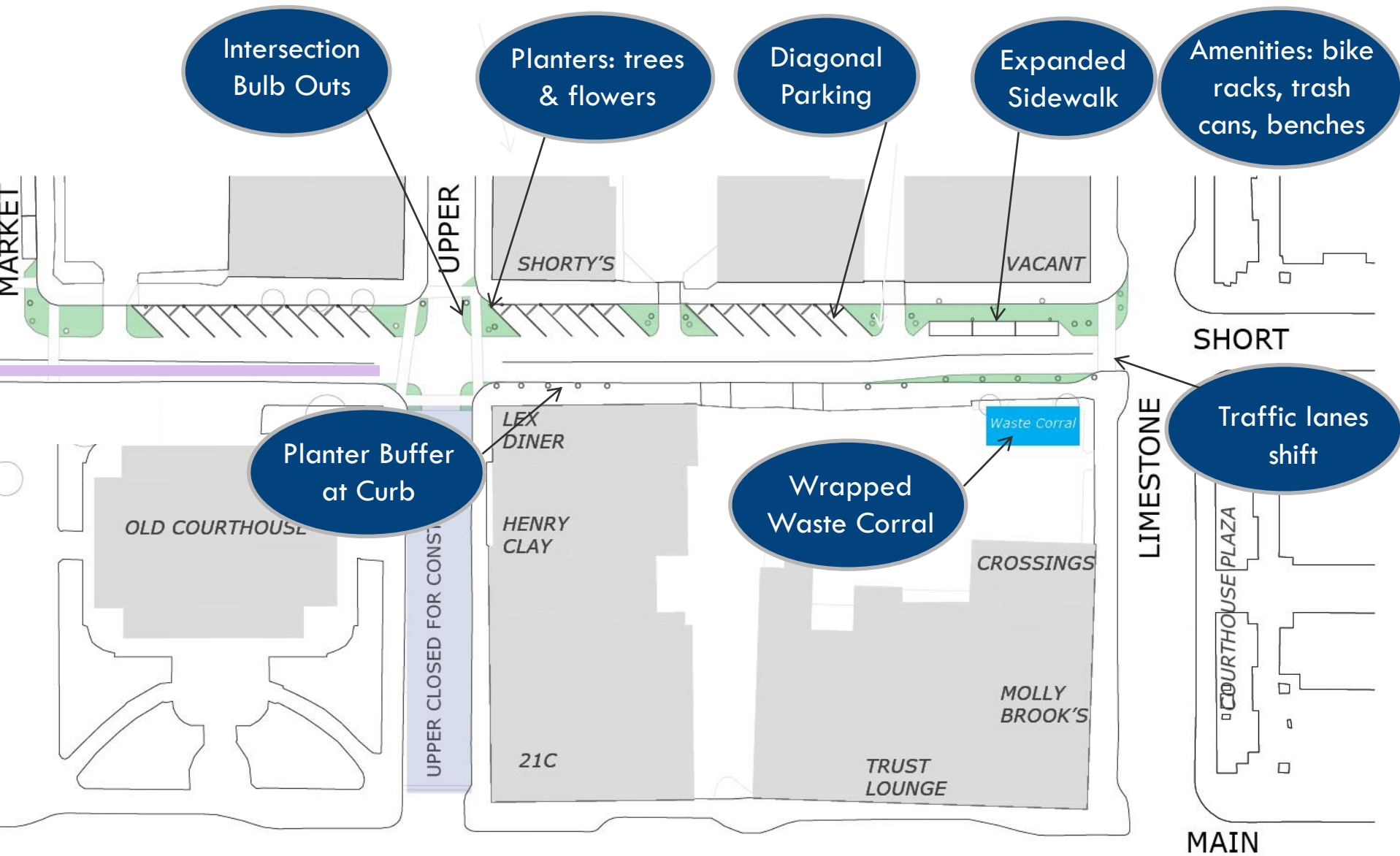
Include Diagonal Parking



Amenities: Bike racks, benches, & trash cans







Intersection
Bulb Outs

Planters: trees
& flowers

Diagonal
Parking

Expanded
Sidewalk

Amenities: bike
racks, trash
cans, benches

Planter Buffer
at Curb

Waste Corral

Traffic lanes
shift



Existing Street



- Widen Sidewalks





- Widen Sidewalks
- Realign traffic lanes & parking



- Widen Sidewalks
- Realign traffic lanes & parking
- Add planters with trees & flowers



- Widen Sidewalks
- Realign traffic lanes & parking
- Add planters with trees & flowers
- Provide directional signage (WYC)



- Widen Sidewalks
- Realign traffic lanes & parking
- Add planters with trees & flowers
- Provide directional signage (WYC)
- Street amenities: bike racks, benches, & trash cans

Note Shown:

- Angled Parking
- Central Waste Corrals
- Loading Zones

Project Stakeholders:

This plan has been reviewed and input gathered from the following:

- Division of Traffic Engineering
- Division of Waste Management
- Division of Streets and Roads
- Division of Fire
- Division of Police
- Division of Parks and Recreation
- Metropolitan Planning Organization
- Lexington Parking Authority
- Downtown Lexington Corporation
- Lexington Farmer's Market
- CEDA (Cheapside Entertainment District Association)
- SP+ Parking Management



Project Partners:

LDDA

Project Management/Design

LFUCG

Project Management/Streetscape
Infrastructure

Jon Carloftis Fine
Gardens

In-Kind Contribution: Plant
material, design, and install

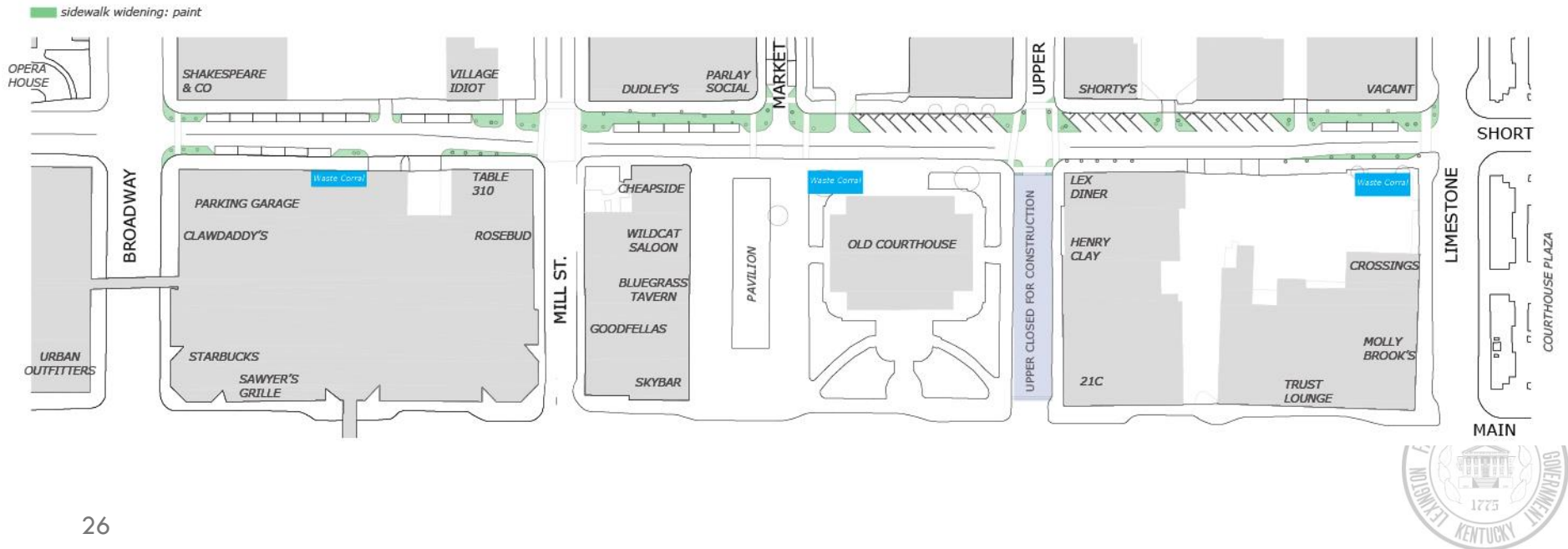
Keeneland

Sponsor: street amenities



Pilot Proposal Summary:

- The pilot will incorporate light, affordable, and reversible street enhancements.
- The pilot will evaluate design approaches to maximize function, safety, and aesthetics.
- Lessons learned from the pilot will inform long term investments throughout the city.
- Ideal installation in July and run pilot through Breeder's Cup.



Financial Details

Budget Amendment (Sources) \$526,696

6731 & 6732

Expenses/Budget (Uses)

Pilot Project \$183,033.40

Permanent Streetscaping &
Public Infrastructure Improvements \$343,662.60



Questions?