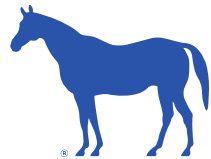


# EMPOWER LEXINGTON

*Jada Walker Griggs, Sustainability Program Manager Senior  
Environmental Quality & Public Works Committee  
June 16, 2026*



**LEXINGTON**

## What is Sustainability?

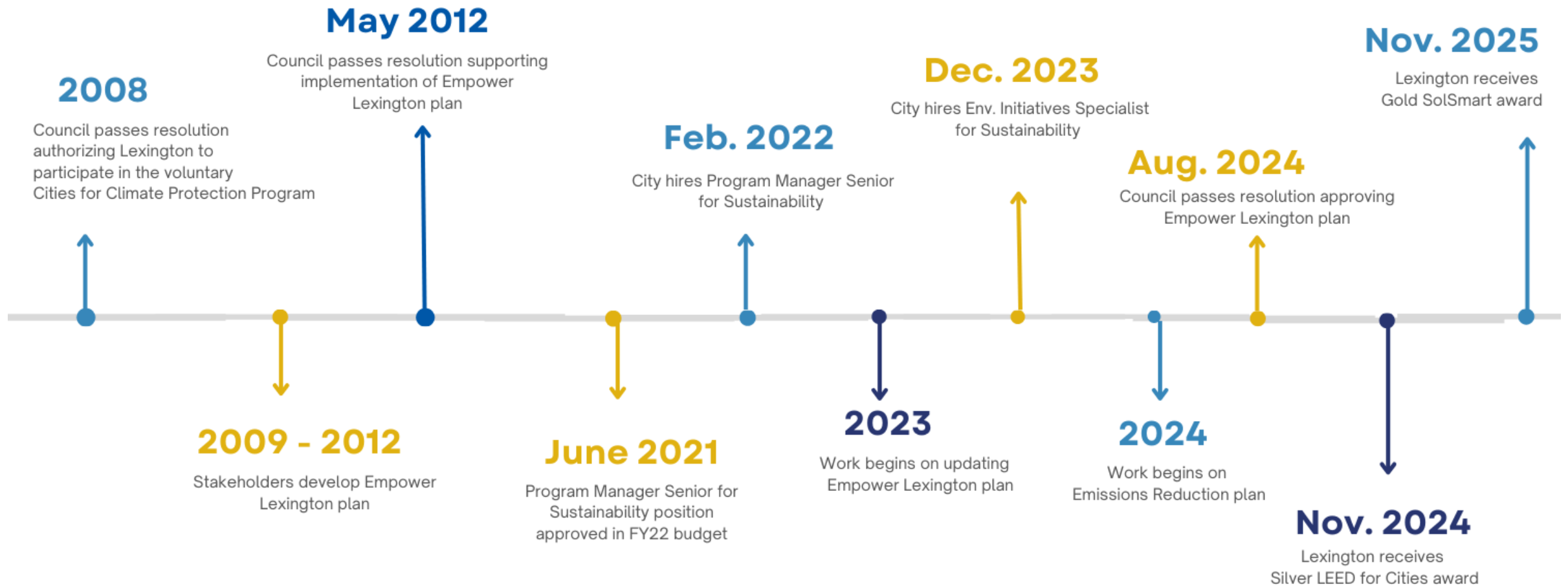
“Sustainability in Lexington means meeting the needs of our generations while ensuring future generations are able to enjoy our urban communities, tree-lined rural roads, equine farms, and countless other physical and social elements that contribute to what makes Lexington, Lexington.”

– Empower Lexington

It involves three main areas:

1. Environment: Protecting natural resources and reducing pollution to keep our planet healthy.
2. People: Ensuring fair and equitable treatment for all individuals and improving quality of life.
3. Economy: Creating robust economic systems that can support ongoing growth without depleting resources.

*This approach helps strengthen our community and improve its ability to handle challenges. By doing these things, LFUCG shows how we can all work together for a better future.*

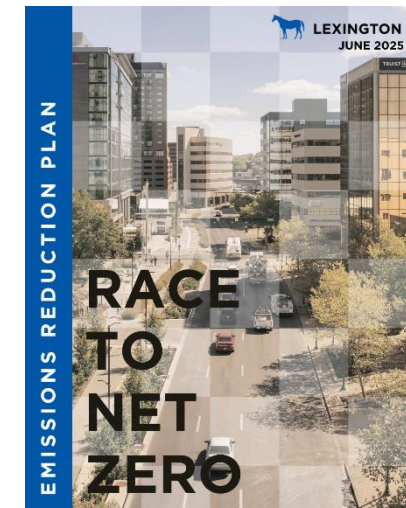
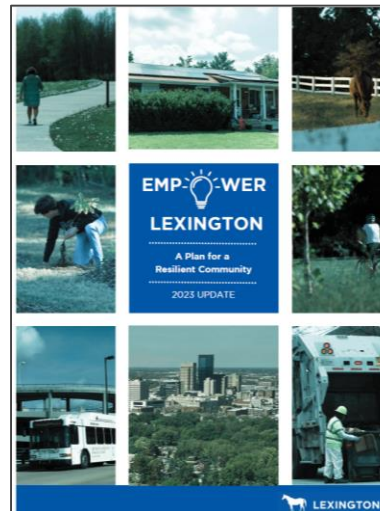
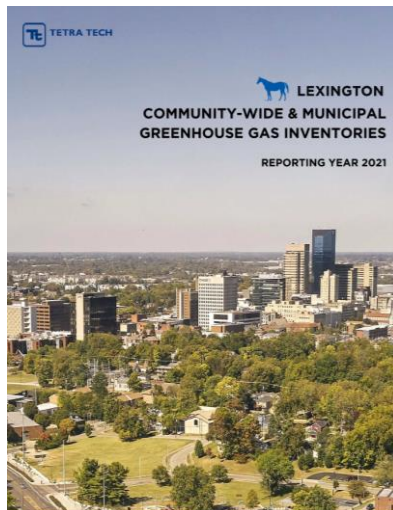


## Lexington's Sustainability Strategy

- 2021 Community-wide & Municipal Greenhouse Gas Inventories Report
- Empower Lexington, A Plan for a Resilient Community (updated 2023)

RESOLUTION #435-2024 A RESOLUTION APPROVING “*EMPOWER LEXINGTON: A PLAN FOR A RESILIENT COMMUNITY*,” A COMMUNITY-WIDE SUSTAINABILITY PLAN DESIGNED TO REDUCE GREENHOUSE GAS EMISSIONS AND ENERGY USE IN LEXINGTON-FAYETTE COUNTY, AND SUPPORTING COMMUNITY EFFORTS IN ITS IMPLEMENTATION.

- Race to Net Zero Emissions Reduction Plan



## Solarize Lexington Program

- 2023 and 2024 partnered with KY Solar Energy Society to provide a vetted process for residents
- Group-buying program designed to promote and encourage the use of solar
- Open only to Lexington-Fayette County residents, small businesses, non-profits, and places of worship
- Council approved \$1M both years for grants to low- to moderate-income homeowners (< 80% Area Median Income [AMI])
- A total of 128 residential solar installations (84 grants)

**\$1,986,684.40 of grant funding disbursed**

*This project was supported, in whole or in part, by federal award numbers SLFRP0292/SLFRP3418 awarded to Lexington-Fayette Urban County Government by the U.S. Department of Treasury.*

## Solarize Lexington Program

### 2026

- Launch June 10
- LFUCG managing program without partnership
- Restructured and expanded program to include all six counties in the Lexington-Fayette County, KY Metropolitan Statistical Area, which includes the counties of Bourbon, Clark, Fayette, Jessamine, Scott, and Woodford
- Council approved \$460,000 for grants to be used only for low- to moderate-income homeowners (< 80% Area Median Income) waitlisted since the 2024 program
- Installer: Solar Energy Solutions

## Green Check

- Free sustainable certification program for businesses, nonprofits, and places of worship
- Started in 2016
- More than 80 businesses have gone through the program
- Green Check scorecard awards points for green initiatives in 10 categories
- Levels include Member, Bronze, Silver, and Gold
- Certification is valid for 3 years
- Current class includes 6 new businesses and 14 recertifications

**Spin-off Initiative:** Green Cup, a partnership with local coffee shops to encourage customers to bring their reusable cups and receive a discount.

## Common Threads LEX

- Sustainability-focused partnership between LFUCG, the University of Kentucky, and Fayette County Public Schools
- Energize a community-wide dialogue about our shared goals and empower residents, students, and families
- Kickoff event was held in March with the screening of *Microplastic Madness* and a panel discussion at the Kentucky Theatre
- Pre-film event included tabling by environmental groups and a reusable items swap
- Plan to hold 2-3 events per year

# Beat the Heat

- Launched August 2025
- Partnership with Division of Emergency Management, Senior Center, Fire & EMS, and Office of Homelessness Intervention and Prevention
- Cooling kits contain a cooling towel, reusable water bottles, electrolyte powder, sunscreen, aloe, tips on staying cool, and a list of cooling stations
- Public health intervention for most vulnerable populations during extreme heat

## It's hot. Stay safe!

- + Wear sunglasses and/or a hat.
- + Wear loose, lightweight clothing in light colors.
- + Avoid direct sunlight. Stay in the shade.
- + When outside, avoid unnecessary activity.
- + Wet a cloth. Wear it around your neck.
- + Avoid coffee, alcohol and drinks with lots of sugar.
- + Don't wait until you are thirsty. Drink water - more than normal. Sports drinks are also helpful.
- + Visit a cooling center.

Name of Agency	Population Served	Times of Operation	Address	Phone
Arbor Youth Services	Anyone ages 18-24	Monday - Friday, 7:00am - 3:00pm	540 West 3rd Street	859-254-2501
Lexington Rescue Mission	All Individuals and Families	Monday - Friday, 9:00 a.m - 5 p.m. Saturday, 9:00 a.m. - 1:00 p.m.	535 West 2nd Street	859-361-9600
Mountain Camp Care	Adult Men and Women	Monday-Friday, 9:00 am - 4:00 pm	1060 Goodwin Drive	859-447-8217
New Life Day Center	Adult Men and Women	Monday-Friday, 8:00 am - 4:30 pm Saturday, 8:00 am - 12:00 pm	224 N. Martin Luther King Blvd	859-721-2325
New Vista	Adult Men and Women	Monday-Friday, 8:00 am - 4:00 pm	201 Mechanic Street	859-721-8505
Nathaniel Mission	All Individuals and Families	Monday-Thursday, 9:00 am - 3:30 pm	1109 Versailles Road, Suite 400	859-255-0062
Recovery Café Lexington	Adult Men and Women	Sunday, 12:00 pm - 3:00 pm Monday, 12:00 pm - 4:00 pm Tuesday - Saturday, 12:00 pm - 6:00 pm	1109 Versailles Road, Suite 200	859-523-0590

When the Extreme Heat Plan has been activated, Lextran will offer free rides to cooling stations.

### Signs of heat-related illnesses include:

- + Red, hot and dry skin (no sweating)
- + Rapid, strong pulse
- + Throbbing headache
- + Dizziness; nausea; confusion
- + Muscle cramps
- + Tiredness and unconsciousness



If someone starts to experience these symptoms, **seek medical help immediately**. Move them to a shady spot. Begin cooling them. Continue cooling efforts until help arrives.

## Other Initiatives

### Pickleball Recycling

- Launched April 2024
- Partnership between Sustainability Section, Parks and Recreation, and the Kentucky Pickleball Association
- Currently, 2 bins located at Shillito Park with plans to add some to Kirklevington in coming weeks
- Collected pickleballs are recycled through P3 Cares
- 1,160 pickleballs recycled so far = more than 69 pounds of plastic diverted from landfill

# Climate Pollution Reduction Planning Grant

## Regional Planning

- EPA Grant awarded September 2023
- Lexington-Fayette County Metropolitan Statistical Area
  - Includes Fayette, Bourbon, Clark, Scott, Jessamine, and Woodford Counties
  - Final deliverable launched June 1, 2026
  - Grant ends June 30, 2027

<https://lexmsaplan.com/>



## Internal LFUCG Initiatives

- Goal: lead by example with our policies and practices
  - Installed “Do Not Flush Wipes” signs in LFUCG facility bathrooms
  - Hydration Station Challenge
  - Monthly sustainability tip on LexLink
  - Plastic Pollution Reduction Pledge
  - Environmental Book Club for City employees
  - Distributing reusable cutlery at Employee Orientation and at the Employee Holiday Lunch



## Community Outreach - Connections

Kentucky Solar Energy Society

Woodford County

Community Action Council

Lextran

Fayette County Climate Action

City of Bowling Green

Division of Facilities Management

Kentucky Utilities

Sister Cities

Jessamine County

Community Environmental Academy

Environmental Commission

Living Streets Lexington

Cardinal Sustainability Network (formerly OKI Network)

Louisville Metro Government

Kentucky Local Foods

East Kentucky Power Cooperative

Lexington Senior Center

Division of Parks & Recreation

ASHRAE Bluegrass Chapter

Bourbon County

Fayette Alliance

Teachers' Environmental Academy

LEX Center for Creative Reuse

Clark County

Scott County

Bluegrass Youth Sustainability Council

Kentucky Pickleball Association

Sierra Club

Fayette County Public Schools

Division of Human Resources

University of Kentucky

Lexington Public Library

Midwest Sustainability

Kentucky Climate Consortium

Bluegrass Greensource

Division of Emergency Management

Office of Homelessness Prevention & Intervention

Division of Planning

# Questions?

[jgriggs@lexingtonky.gov](mailto:jgriggs@lexingtonky.gov)  
[www.lexingtonky.gov/sustainability](http://www.lexingtonky.gov/sustainability)



**LEXINGTON**  
*Sustainability*