

# Transmission Cycle Based Line Clearing

Kevin Montgomery  
Transmission Right of Way Coordinator



# Transmission Overview



# Program Overview

- 2014 Program Assessment
- Included in Transmission System Improvement Plan
- Cycle based approach
- Hazard tree program



Before



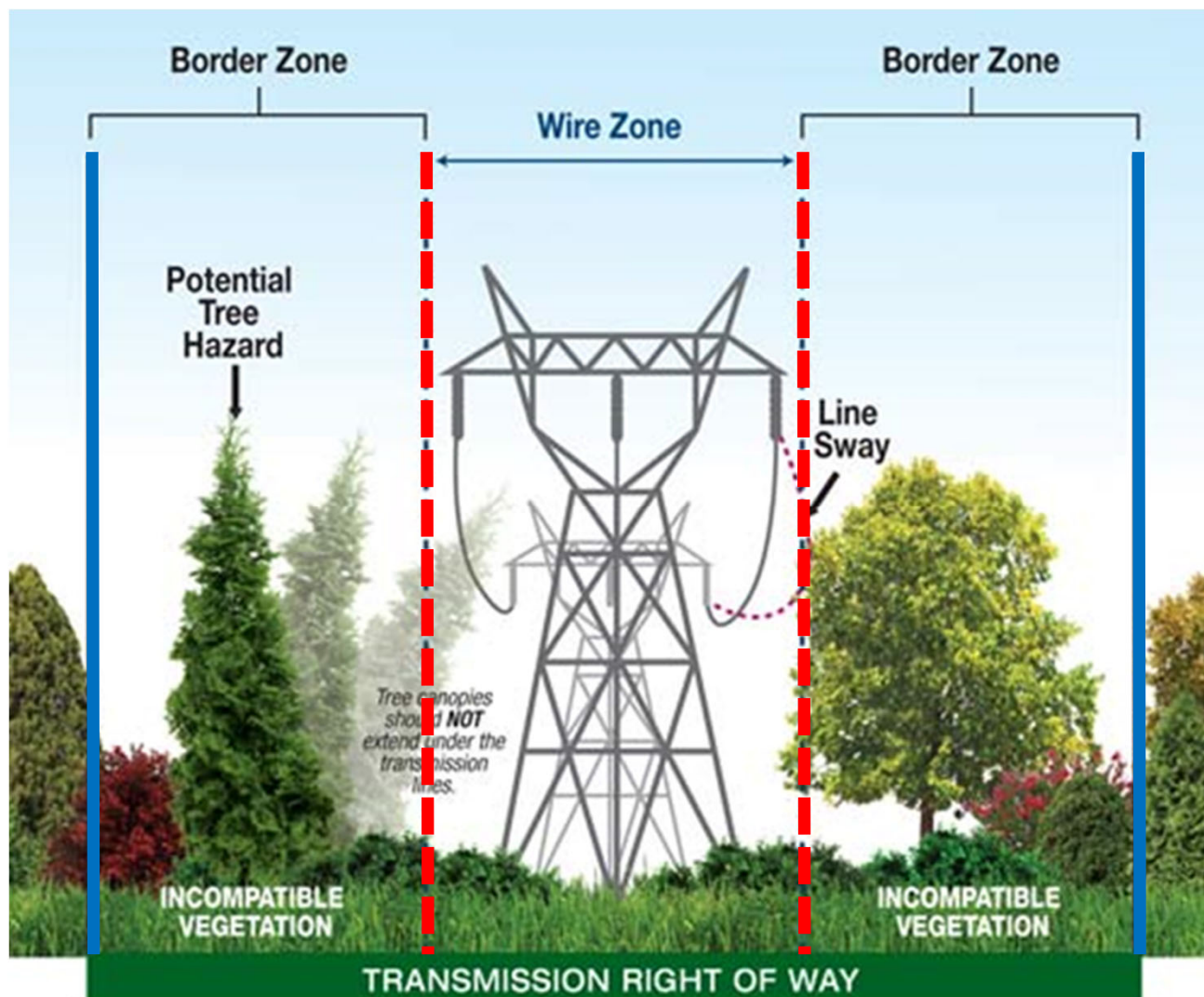
After



Current

# Approach for Yard Trees

## Wire Zone and Border Zone



# 2022 KU Lexington Transmission Work

- Area 1: Lexington Plant – Loudon (1.23 miles - Q1)
- Area 2: American Ave – Reynolds – Higby Mill (4.57 miles - Q1 & Q2)
- Area 3: Lexington Plant – Parkers Mill – Pisgah (0.72 miles - Q2 & Q3)
- Area 4: American Ave – Parkers Mill – Higby Mill (3.89 miles - Q3)
- Area 5: Loudon Ave – Avon EKPC (2.0 miles - Q3)
- Area 6: Loudon Ave – Avon EKPC at Haley Pike (1 mile - Q4)

