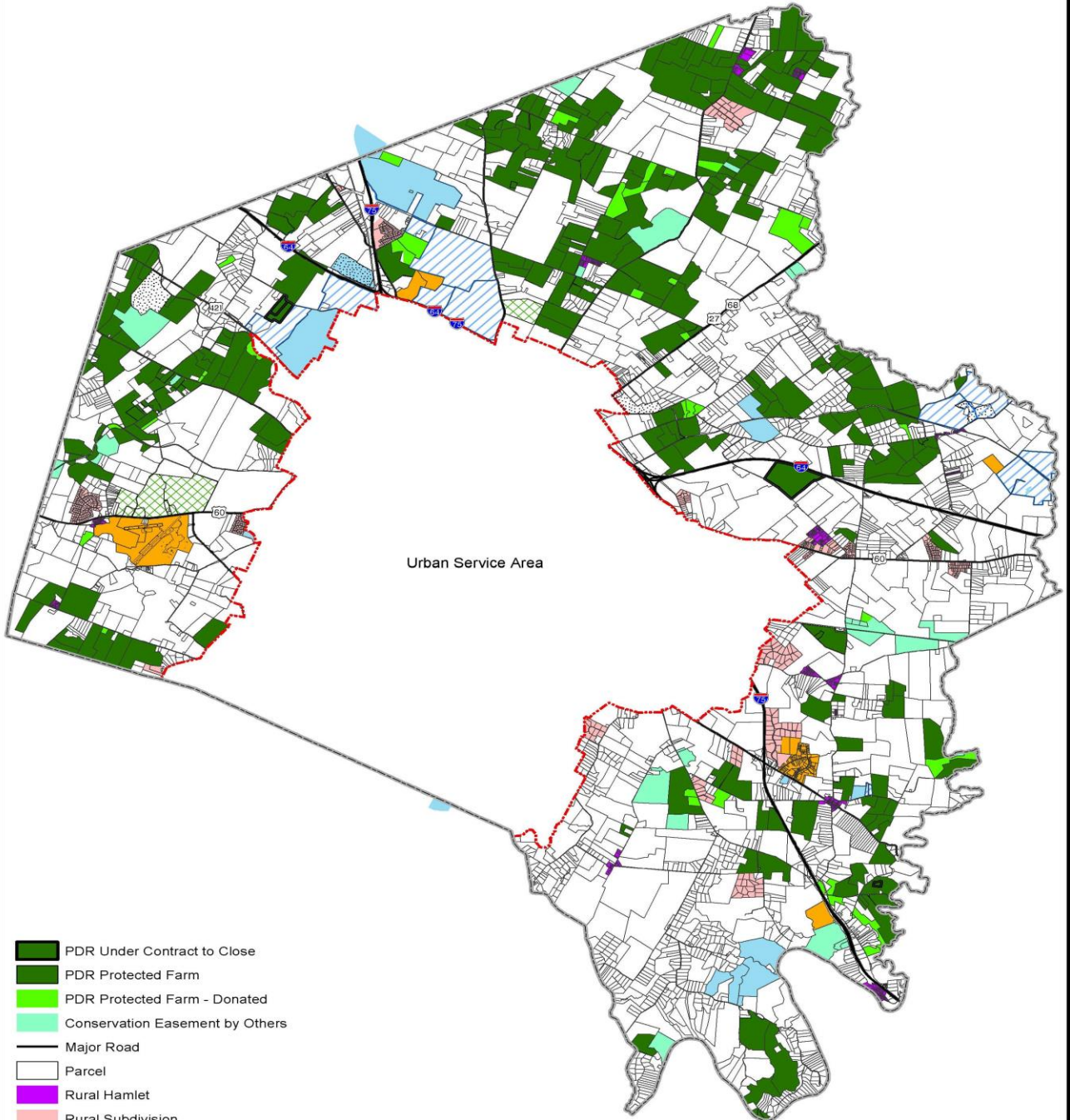


2012
Purchase of Development Rights
Annual Report

PDR Protected Farms, Accepted Offers, Other Protected Farms, and Other Public Lands

26,725 acres of preserved farmland now protected by PDR
 50,000 acres of farmland is the goal of PDR.
 Lexington-Fayette County, Kentucky



Urban Service Area

- PDR Under Contract to Close
- PDR Protected Farm
- PDR Protected Farm - Donated
- Conservation Easement by Others
- Major Road
- Parcel
- Rural Hamlet
- Rural Subdivision
- Industrial / Airport
- Park
- Public Land
- Keeneland/ Fasig-Tipton Property
- Golf Course
- Urban Service Area Boundary
- County Boundary

This product is produced and distributed by:
 Lexington-Fayette Urban County Government
 GIS Section 200 E. Main St. 7th Floor
 Lexington, KY 40507. Not for resale.

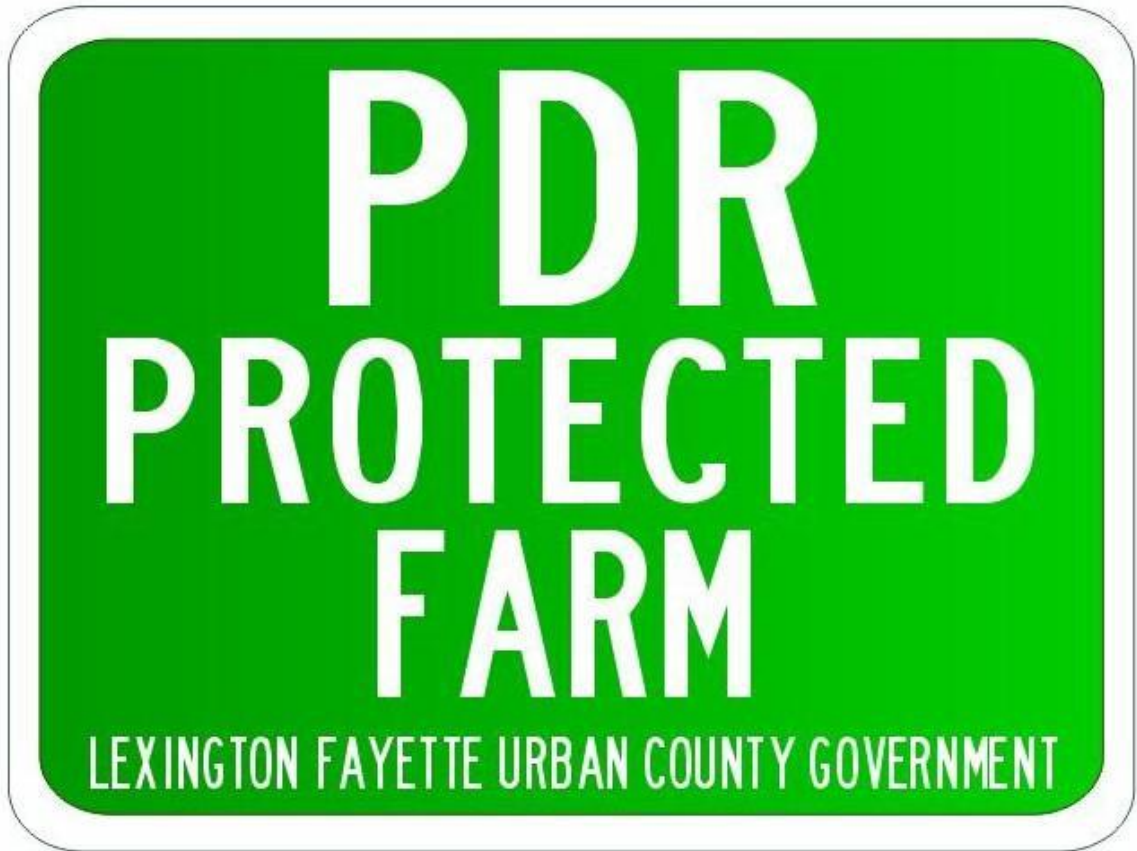
All information on this product is believed accurate but is not guaranteed without error. No part of this publication may be reproduced, stored, or transmitted in any form or by any means without written permission from LFUCG.

© 2012 LFUCG



Revision Date: 11-05-2012

2012 PDR Annual Report	
Implementation to date	
<i>Percentage of Goal of 50,000 acres</i>	
53.50%	
<i>Total acres</i>	
26,725.7237	
<i>Total farms</i>	
236	
<i>Equine farms</i>	
129	
<i>General Agriculture farms</i>	
94	
<i>Other types of farms</i>	
13	
<i>Donated Conservation Easements</i>	
39	
Round 10	
Parcel acreage	Parcel location:
<i>Purchased conservation easements</i>	
361.9900	3933 Spurr Road
201.3433	6284 Russell Cave Road
68.4800	4746 Huffman Mill Pike
44.760	3175 Russell Cave Road
315.980	3079 Royster Road
103.389	3750 & 3880 Spurr Road
<i>Withdrawn application</i>	
333.013	640 North Yarnallton Pike and 4050 and 4252 Spurr Road - offer too low
Round 11 - current round - to date	
Parcel acreage	Parcel location
<i>Donated Conservation Easement</i>	
26.950	1185 Iron Works Pike
<i>Purchased conservation easements</i>	
255.9830	Offer made (not included in total acres)
Round 12 - FY14	
42 applications / 3,747.353 acres	



Questions?