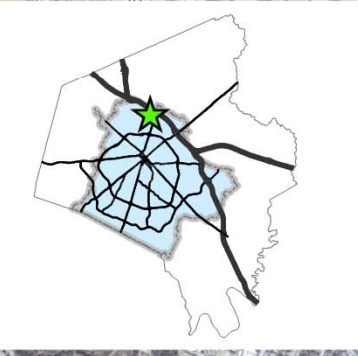
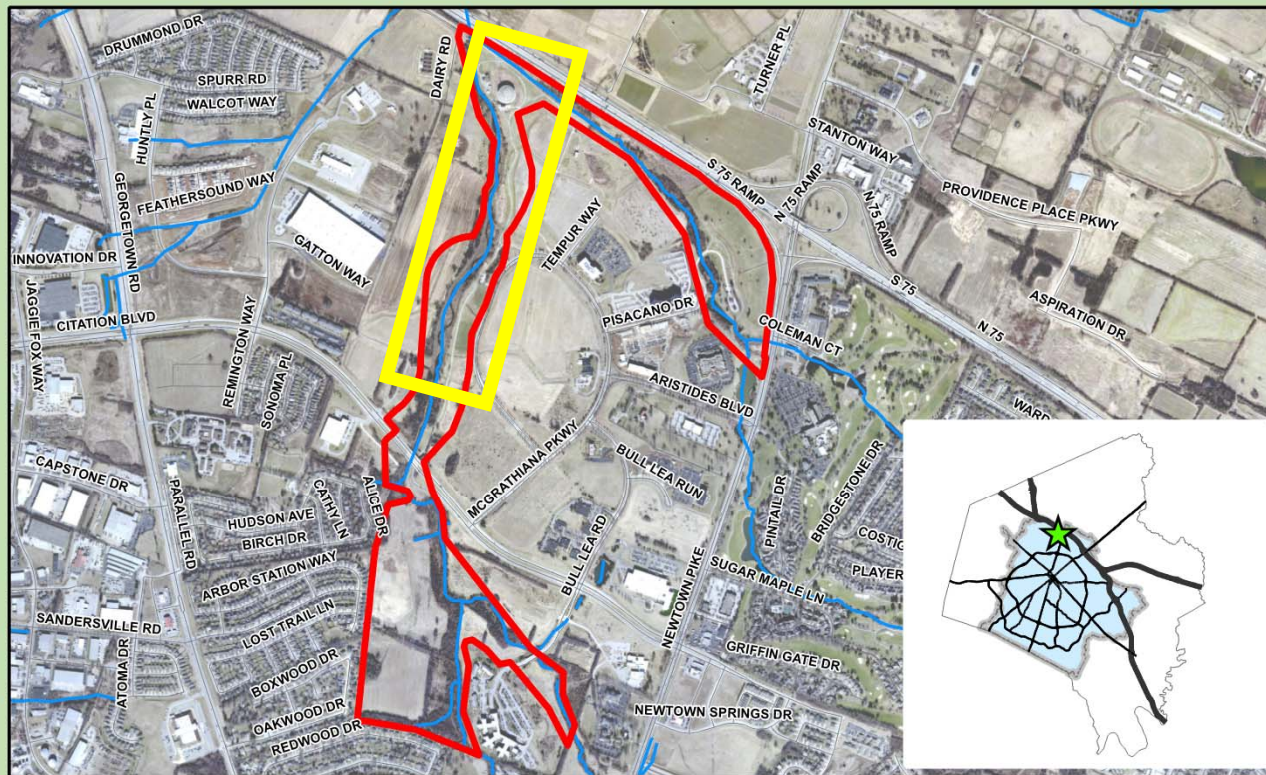


# Coldstream Park Cane Run Project Area



**Legend**






-  Coldstream Regional Park
-  Stream (NHD)
-  Street

Figure 1 - Coldstream Regional Park  
1875 Newtown Pike

0 5 10 20 Miles



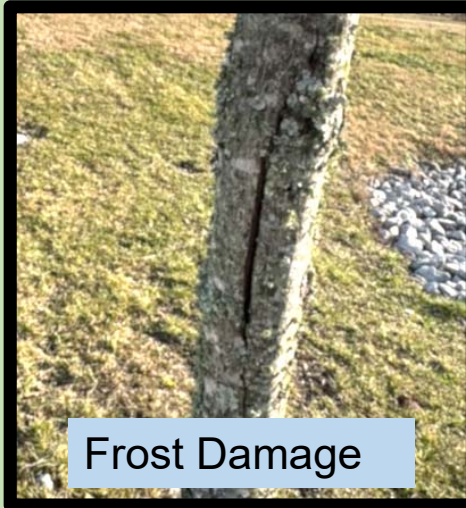
## Example Tree Maintenance Needs

Legacy Trail

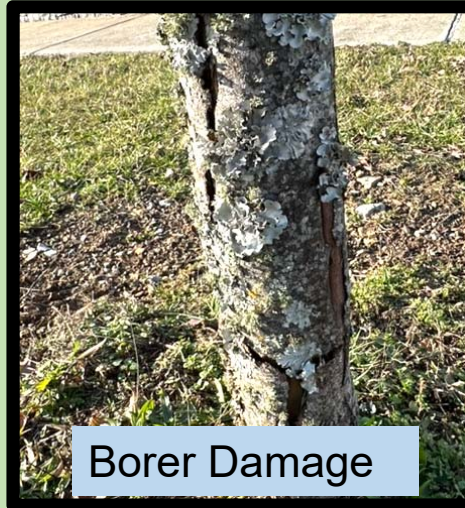


Trees all across the park lack mulch making them susceptible to mechanical damage which is one of top causes of decline in young trees.

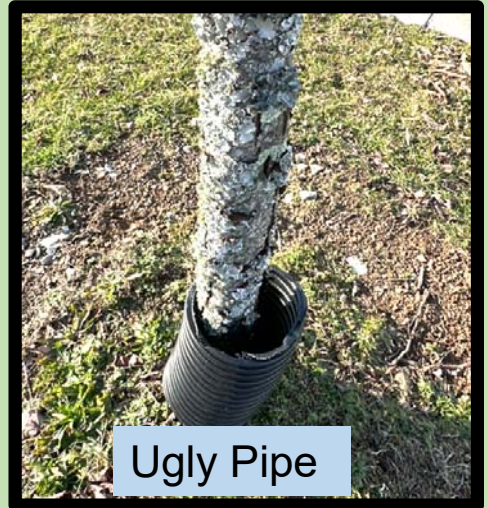
Cane Run  
Area Trees



Frost Damage



Borer Damage



Ugly Pipe



Wonky Crown



Sucker Stump



Mech. Damage

Addressing litter washed down from highways, adjacent commercial areas and apartment complexes



## Create PROPER mulch rings using chunky coarse wood chips

- Retains moisture
- Encourages microbes
- Builds soils
- Discourages weeds
- Keeps mowers away
- Chunky chips last longer and they're free
- Bigger diameter is better
- No Volcanos

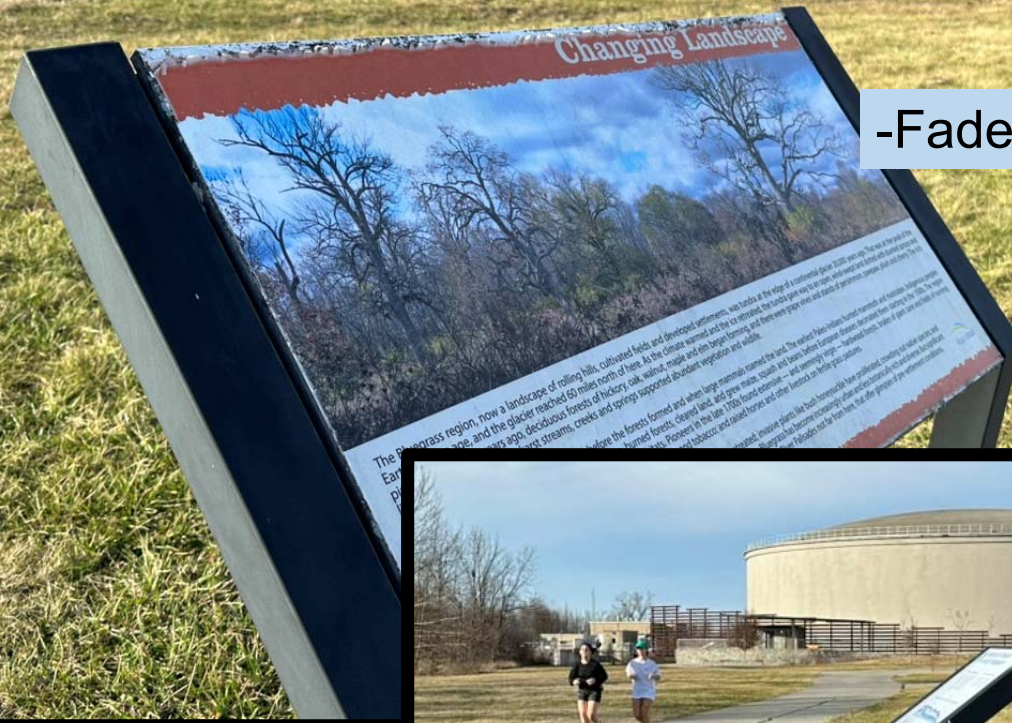


Applying Tree Wraps to prevent sun scald on tree species prone to winter sun damage.

Can also prevent deer scrape damage.



# Interpretive Signage



-Faded and delaminating



-Many bases damaged



-Crooked, loose and wobbly



# QUOTE

Lexington-Fayette Urban County Greenspace Trust

LEXINGTON KY 40504

**Date**  
Feb 28, 2023

**Expiry**  
Mar 29, 2023

**Quote Number**  
QU-5373

**Reference**  
SR: Tina

Interpretive Graphics /  
EnviroSIGNS  
3590 E Summerhill Dr  
SALT LAKE CITY UT  
84121  
USA 888-492-5377

## Replacements: FIVE 24H x 36W x 1/8" Durareader Panels and ONE Cantilever Frame/Base, in-ground Posts

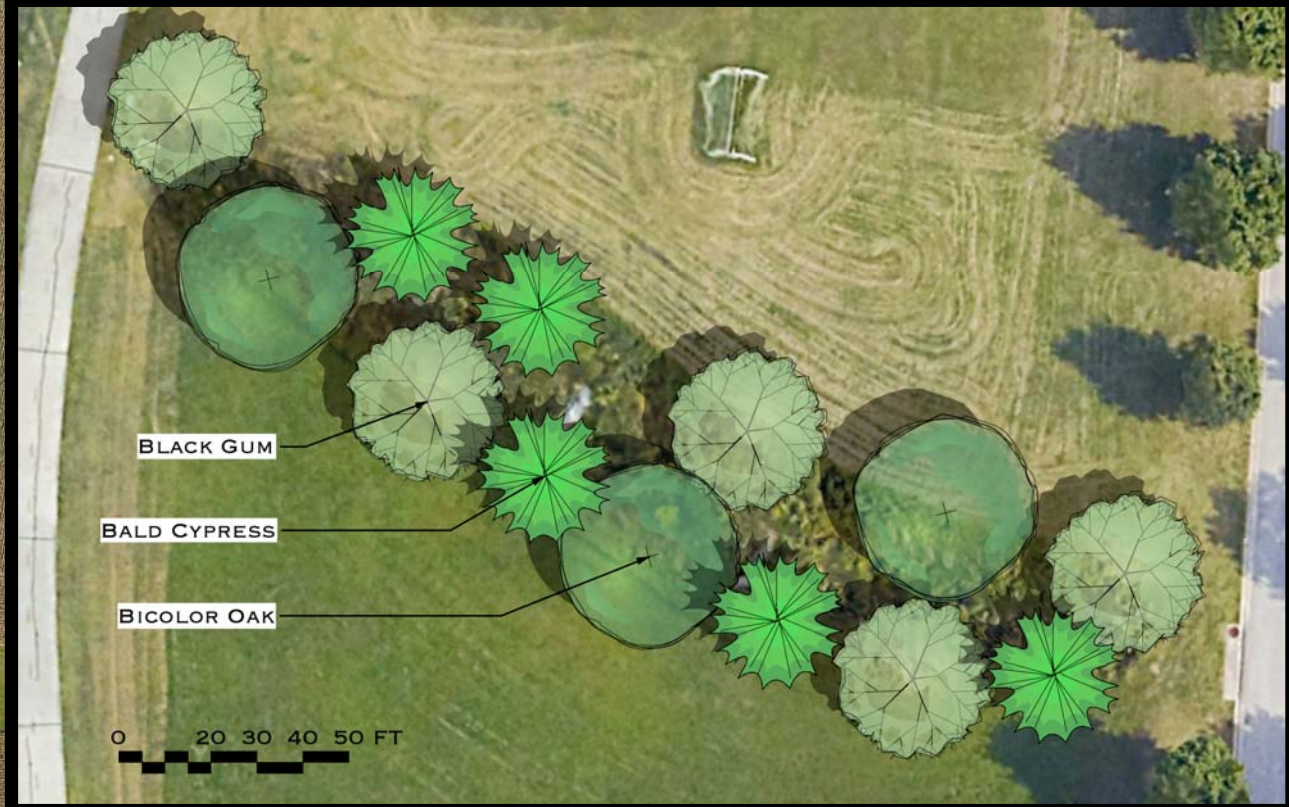
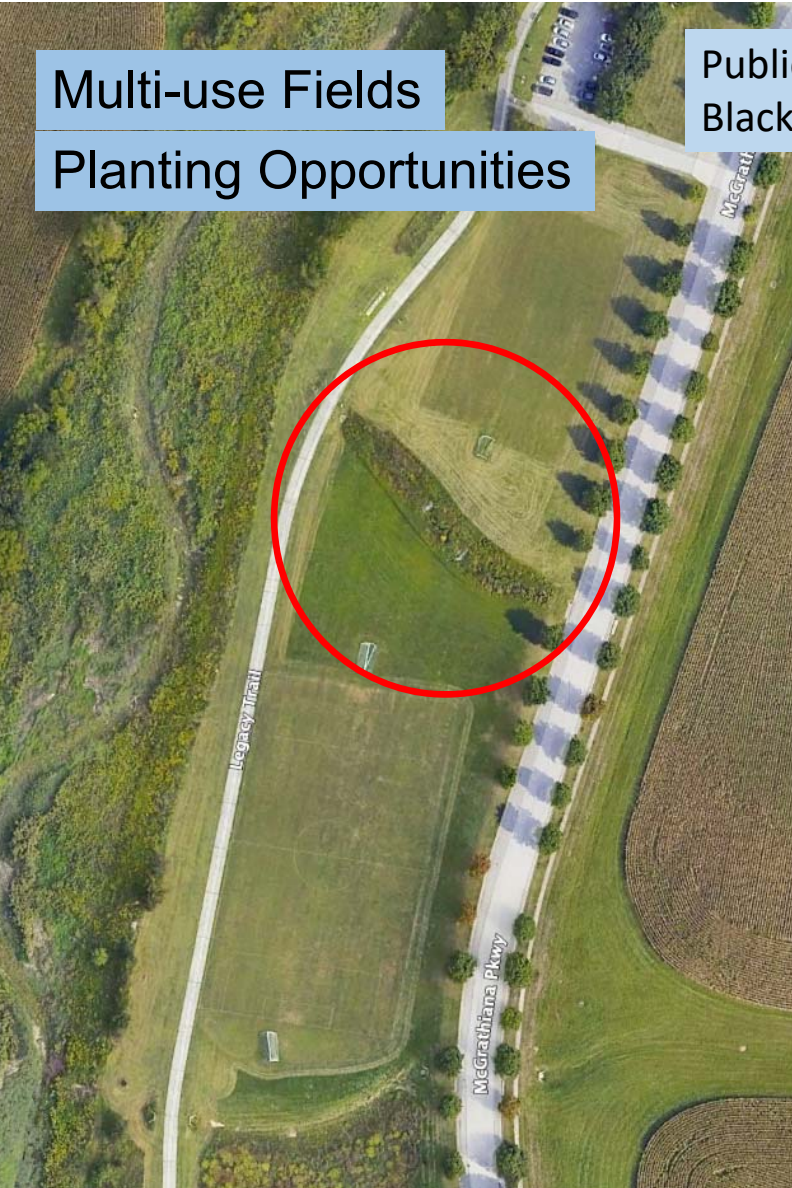
Description	Quantity	Unit Price	Tax	Amount USD
Client File Setup: Native AI or INDD files packaged for printing are to be provided to IG/ES.	1.00	75.00	Tax Exempt	75.00
Digital Pre-press Proof for review and approval of content. Changes at this stage may incur file replacement fees.	1.00	0.00		0.00
Physical color samples are available for review and approval of color and resolution for an additional cost.				
DuraReader Production Setup	1.00	100.00	Tax Exempt	100.00
24"hx36"wx1/8" thick DuraReader panel (exterior CHPL)	5.00	215.73	Tax Exempt	1,078.65
Cantilever, 45-degree, in-ground, exhibit base with frame for a 24"hx36"wx1/8" panel. Black texture powder coated aluminum.	1.00	558.48	Tax Exempt	558.48
Packaging and Standard Shipping to zip code 40504 (no special services included)	1.00	241.05	Tax Exempt	241.05
			Subtotal	2,053.18
			<b>TOTAL USD</b>	<b>2,053.18</b>



## Multi-use Fields

## Planting Opportunities

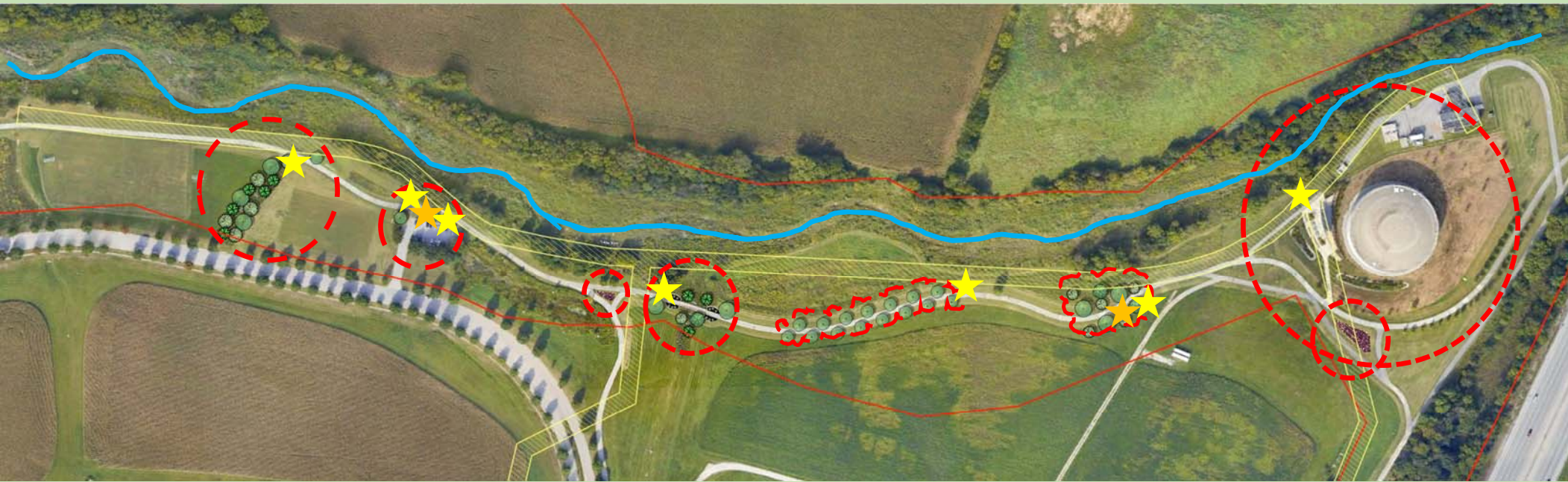
Public engagement would provide good place to plant more Bald Cypress, Blackgum, Bicolor Oak etc. to create a visual and wind buffer.



Trailside Pollinator Garden Concept (plant materials needed)



## Cane Run Coldstream park Improvement Opportunities Plan Overview:



-Trailside Pollinator Plantings

-Signage Repairs

-Cane Run Cleanup

Tree and Shrub Landscaping Rehab

-Support needed for materials, supplies and educational signage

**AMERICAN WATER CHARITABLE FOUNDATION**  
**KEEP COMMUNITIES FLOWING GRANT APPLICATION**  
**PROGRAM BUDGET**

Name of Organization: Lexington-Fayette Urban County Greenspace Trust Inc.  
Name of Project: Cane Run-Coldstream park Conservation Management  
Name of Person Completing Budget Form: Kenneth Cooke, Treasurer

**EXPENDITURE CATEGORIES**

<b>Spending Detail</b> Please be as complete and specific as possible.	<b>Grant Funds Requested</b>	<b>Other Funds Available</b> (Funding from other sources for proposed project, if any.)	<b>In Kind Contributions</b> (if applicable)	<b>Total Budget</b> (the sum of columns 2-4)
Replacement Signage, design			\$ 500	\$ 500
Replacement Signage, Fabrication Shipping	\$2,750			\$ 2,750
Professional Sign Installation	\$ 500.00			\$ 500.00
Tree Identification markers and mounting hardware	\$ 600.00			\$ 600
Scoping and placing tree identification markers (Volunteer)			\$ 250	\$ 250
Stream Cleanup Materials and Supplies (Bags, Gloves, Tools)	\$ 500.00			\$ 500
Volunteer time contributions at \$15.00/hr			\$ 900	\$ 900
Plant materials, seed, perennial plants, Tree Whips, Mulch	\$ 4,500.00			\$ 4,500
Printing flyers, training materials	\$ 300.00			\$ 300
Design of flyers and training materials			\$ 200	\$ 200
Donated professional services, Training, Support, supervision			\$ 500	\$ 500
Donated professional services, Layout and Design			\$ 500	\$ 500
				\$ -
				\$ -
<b>TOTAL</b>	\$ 9,150		\$ 2,850	\$ 12,000



To: American Water Charitable Foundation  
Grant Programs Administrators

March 11, 2024

Greetings,

This is to indicate our support for the grant request from the Lexington Greenspace Trust Inc for their Campaign targeted for litter removal and vegetation management at the Coldstream Park Legacy Trail conservation easement.

The Lexington Parks Maintenance staff will work with Trust project managers to develop and approve a planting plan that is compatible with LFUCG efforts managing the property. This will include review and approval of species, planting locations and methods that are complementary with long range management goals for the area.

We look forward to working with Trust leadership on this important tree canopy and environmental education effort.

If you have any questions about the support of our agency's support for this project, please contact us at the numbers below.

Sincerely

A handwritten signature in blue ink that reads "Chris Cooperrider".

**Chris Cooperrider**  
*Deputy Director*  
Division of Parks & Recreation

859-288-2963 office  
[ccooperrider@lexingtonky.gov](mailto:ccooperrider@lexingtonky.gov)



Monday, March, 11 2024

American Water Foundation Grant Review Committee

Subject: American Water Environmental Foundation, Grant Programs Administrators

Greetings:

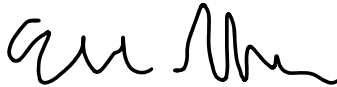
This letter is to indicate our support for the grant request from the Lexington Greenspace Trust Inc for their Cane Run, Coldstream Park Cleanup Campaign targeted for the Coldstream Park Legacy Trail conservation easement.

The Division of Environmental Services will work with Trust project managers to develop and approve a plan that is compatible with Lexington-Fayette Urban County Government (LFUCG) efforts to manage the property. This will include review and approval of activities, assistance with tree identification and mulching methods that are complementary with the Division's management plans for the property.

We look forward to working with Greenspace Trust leadership on this important tree canopy and environmental education effort.

If you have any questions about the support of our organization for this project, please do not hesitate to contact our offices at the numbers below.

Sincerely,



Eve Miller  
Environmental Planner Sr.  
Division of Environmental Services  
859-425-2808 Office  
[emiller@lexingtonky.gov](mailto:emiller@lexingtonky.gov)

CC: Demetria Kimball Mehlhorn  
Program Manager Sr.  
Division of Environmental Services  
859-425-2554 Office  
[dkimball@lexingtonky.gov](mailto:dkimball@lexingtonky.gov)





# Friends of Cane Run Inc

---

Neighbors organized to protect and improve our watershed  
Lexington to Georgetown in Fayette and Scott County, Kentucky

To: American Water Charitable Foundation  
Grant Programs Administrators

March 11, 2024

Greetings,

This is to indicate our support for the grant request from the Lexington Greenspace Trust, Inc. for their cleanup and native vegetation campaign targeted for the Coldstream Park Legacy Trail that borders the Cane Run creek conservation easement.

We particularly enjoy organizing community clean-up and volunteer work days, along with an eye to follow-up watering and mulching to ensure the best survivability for trees planted. We will be promoting these community service opportunities to our network of contacts and community partners.

We look forward to working with Trust leadership on this important tree canopy and environmental education effort.

If you have any questions about the support of our organization for this project, please contact us at the number below.

Sincerely

Amanda Gumbert,  
Board of Trustees  
Friends of Cane Run INC  
859-257-6094

Actions ▾



AMERICAN WATER  
CHARITABLE FOUNDATION

✓ Success! Thank you for your submission. ✕

💡 This application was completed on **2024-03-14 22:13:27 UTC** and is now read-only.



## KEEP COMMUNITIES FLOWING

### American Water Charitable Foundation Grant Application

American Water has long believed in the importance of being a good neighbor and good steward of the environment. In our mission to demonstrate American Water's commitment to the communities it serves, we align our grant making to American Water's values. The American Water Charitable Foundation supports three pillars of giving: Water, People and Communities.

Due to the volume of grant applications received, each application is evaluated on a competitive basis as we strive to fund programs with a strong impact and measurable outcomes within our funding priorities. Before applying for a grant, we recommend you learn more about who we are, eligibility, how grant decisions are made and our scoring evaluation process by visiting our website [🔗](https://www.amwater.com/corp/Customers-and-Communities/American-Water-Charitable-Foundation/apply-for-a-grant) (<https://www.amwater.com/corp/Customers-and-Communities/American-Water-Charitable-Foundation/apply-for-a-grant>).

Thank you for your interest in the American Water Charitable Foundation and best wishes for continued success!

---

Keep Communities Flowing:  
**Water and Environment**

Applications Open: Feb. 5 – Mar. 15

Grant Decisions By: April 30

Programs focused on clean water, conservation, environmental education, climate



variability, and water-based recreation. Examples include innovative, community-based projects that improve, restore or protect watersheds, surface water and/or groundwater supplies, promote water conservation, and/or improve equitable access to water-based recreation in underserved communities. Environmental projects that seek to educate, inform and advance environmental issues to preserve and protect natural resources, including reforestation efforts, biodiversity projects (habitat restoration, wildlife protection) and hazardous waste collection.

---

Keep Communities Flowing:

**Workforce Readiness**

Application Open: TBD

Grant Decisions By: TBD

Programs focused on general career readiness, financial and business literacy, positive youth development, mentoring, and life skills to help prepare future leaders of tomorrow. Programs with a strong focus on inclusion, diversity and equity will be prioritized.

---

Keep Communities Flowing:

**STEM Education**

Applications Open: TBD

Grant Decisions By: TBD

STEM-focused curricular and extracurricular programs to provide underserved students access to high-quality learning they need to succeed. Programs with opportunity for American Water employee engagement will be prioritized.

---

You should feel supported throughout the application process. If you have any programmatic questions please contact ✉ [awcfgrants@amwater.com](mailto:awcfgrants@amwater.com) (mailto:awcfgrants@amwater.com) and if you have technical questions, please click the "Help" link available at the bottom of each page.

**Please select the grant opportunity that best supports your request:**

**Water and the Environment**

## Eligibility Check

Let's make sure you're in the right place. Start by answering these basic eligibility questions.

**Is your organization located in the United States?**

- Yes
- No

**Is your organization classified as a 501(c)(3) public charity by the Internal Revenue Service (IRS)?**

- Yes
- No

**Please enter your Tax ID/EIN number below.**

20-1780981

**In order to qualify, your organization must operate within, or directly benefit an American Water service territory to be considered for funding. See American Water service areas [link](https://www.amwater.com/corp/Customers-and-Communities/American-Water-Charitable-Foundation/communities-served-by-american-water) (<https://www.amwater.com/corp/Customers-and-Communities/American-Water-Charitable-Foundation/communities-served-by-american-water>).**

**Is your organization located in an American Water service area:**

- Yes
- No

Using the above American Water service area link as your guide, please provide:

**Select state your organization is located in.**

Kentucky

**Provide name of American Water service area.**


Kentucky American Water Company

**Provide zip code of American Water service area.**

40507

**Is your organization an American Water customer?**

- Yes
- No

To focus our giving, there are projects and organizations we don't fund. Please review the following list in its entirety before you apply for a grant. This is not an exhaustive list and other restrictions may apply. [Click to expand](#) 

**Please confirm you align with our giving guidelines outlined above  
and you understand additional restrictions may apply.**

Yes

No

## About You

Please provide details of the **primary contact** for this request. This person will receive all communication regarding the request.

**First name****Last name****Preferred Pronoun (optional)****Email****Phone number****Title**

**Have you spoken to anyone at American Water about this application?**

Yes

No

**Please tell us who you spoke to and any other relevant details**

Kathryn Nash  
President, Kentucky American Water  
kathryn.nash@amwater.com  
423-290-7820  
Serves on our steering committee for the project.

**How are you connected with the organization applying?**

I work / volunteer for the organization that will receive the support

I am a contract fundraiser / grant writer

I am a board member

Other

## About Organization

Enter the name of the beneficiary organization or registration number and select from the list provided.

LEXINGTON FAYETTE URBAN COUNTY GREENSPACE TRUST INC 200 E MAIN ST, LEXINGTON, KY, US (<https://benevity.com/causes>)

LEXINGTON FAYETTE URBAN COUNTY GREENSPACE TRUST INC  
200 E MAIN ST  
LEXINGTON, KY 40507-1310  
201780981

### Organization website

[www.greenspacelex.org](http://www.greenspacelex.org)

### What is the organization's mission statement?

The mission of the Greenspace Trust is to preserve, protect, enhance and maintain the open space throughout the Lexington Urban Service Area and Fayette County.

Please check the following inclusion and diversity groups with which your organization is affiliated: 

Black-African American

LGBTQ+

Persons with disabilities

Veterans

Women

Describe how the grant would create or enhance the organization's inclusion, diversity and equity programs or promote inclusion, diversity and equity in the community.

Our project area is in a public park and green space adjacent to underserved neighborhoods in Northern Lexington. Our board and project steering committee includes individuals who identify with under-represented communities.

Describe the organization's relationship with American Water and its involvement in the project. Include names of any American Water employee(s) who serve on your organization's Board of Directors:

Board leadership has worked with local water company officials, Kathryn Nash serves on our board of directors.

Has your organization been the recipient of any other American Water or American Water Charitable Foundation funding?

Yes

No

Please provide your organization's social media information (optional).

**Facebook page**

**Instagram profile**

**YouTube page**

**LinkedIn page**

**Twitter profile**

**Please provide other social networking profiles your organization uses.**

## About Request

### What is the name of your project?

Cane Run, Coldstream Park Greenspace Enhancement Program

### Please provide a brief 10-15 word description of this project.

Expansion of native plantings, educational activities and participatory

### What is the total amount you are requesting?

\$9,150

### Specifically, how would a grant be utilized for this project? In addition, from a sustainability perspective, please share strategy for long-term funding and future viability of program beyond the time of this grant.

Funding would be applied to purchase of outdoor educational signage for the trail areas (to repair and replace outdated/damaged signage) to pay for materials and supplies for volunteers to conduct stream cleanups, mulching events and planting days, and for plant materials to install a demonstration pollinator garden along Legacy Trail that border our conservation easement in the park. We also hope to use the events associated with this activity to engage area residents in participating in a long range plan for the greenspace being developed by Lexington City Government. The park and trail serves as an important regional link for outdoor recreation, our hope is to involve casual users of the trail and park in getting involved in long term management in cooperation with Friends of Cane Run and other community based organizations in addition to our own.

### If partial grant funds are awarded, is this project still feasible?


Yes

No

### Please explain why/why not.

We can adjust activities based on resources available.

**Please complete attached budget template (<https://storage.benevitygrants.org/files/american+water/public/general/American+Water+Budget+Template.xlsx>) to specify how grant funds requested from the American Water Charitable Foundation will be spent. Be as complete and specific as possible. Skipping these instructions or providing an alternative budget format will guarantee rejection of the grant application.**

 American+Water+Budget+LGST-2024-V03.xlsx (<https://forms.benevity.org/api/u>)  
13.39 KB

### Provide an executive summary of this project or initiative. (250 word max)

The Lexington Greenspace Trust holds a conservation easement along the stream and hopes to engage area residents in participating

in planning efforts, involve them in management of the resource, and understanding conservation goals necessary for its long term protection. We have identified a number of needs for the area, including repair of existing plantings, expansion of natural areas, control of litter and trash that blight the park. Your foundation's support would provide us with resources to carry out specific events and activities to reach those objectives.

**Specify which area/cities/counties will be impacted by the project (and/or watershed, stream or river)**

Please see attached map of Lexington, Fayette County, Kentucky, Cane Run Watershed, Coldstream Park and environs. The zone is in a karst recharge area for a public water supply spring.

**Describe plans to engage the community in this project or initiative.**

People love planting things, we hope to do that, people, surprisingly like mulching trees, we hope to do that, people enjoy working together in the field, we plan to do that by hosting community events at the facility in cooperation with Parks, Environmental Services and other organizations we partner with. Signage will be seen long term and help educate park users, publicity from the event(s) will help promote the resource and good environmental stewardship community wide.

**Is there an opportunity for American Water to support your organization through volunteering?**

Yes

No

**Please describe potential volunteer opportunities and roles required.**

We will alert your local public affairs group about schedule events, we will also have dedication events associated with installing new educational signs and the demonstration pollinator garden. If your staff can work a shovel or rake, we need them! If your staff can help interpret water supply protection information, we would love to have them be present at our events.

Please provide names of organizations you are partnering with on this project. Examples of partners could be municipalities, local environmental groups, conservation districts and schools.

**Who are these partners and what are their roles?**

**Partner Organization Name**

Friends of Cane Run inc.

**Involvement or contributions to the project**

Promoting the event with their membership and assisting with event coordination



**Partner Organization Name**

Lexington Parks and Recreation

**Involvement or contributions to the project**

Technical advice to the committee to ensure plans are consistent with their management of the park, and we often ask them to haul off trash collected.

**Partner Organization Name**

Lexington Division of Environmental Services

**Involvement or contributions to the project**

Technical support on plant choices and planting procedures as part of their "Plant By Number" program for the Trail Side Pollinator Demonstration Garden.

**Partner Organization Name**

Greesnpace Trust Steering Committee

**Involvement or contributions to the project**

Select volunteers from the board will be involved in event coordination, purchasing of materials, grant accounting and reporting. Note, one does not need to be on our board of directors to be a member of the project steering committee.

## About Project

**Explain how this project or program will make a meaningful and positive impact in the community. Include how your target audience/population will benefit. (250 word max)**

The Legacy Trail and Coldstream Park is already a well used facility with over a half million anual park visits recorded by . By having example plantings, educational signage and tree identification resources park goers will benefit through direct exeprience. Volunteers who come out for community events will get first-hand training and support in planting, mulching and native plant installations. Working shoulder to shoulder with others of similar interest (but diverse backgrounds) can help form ongoing partnerships and connections to further actualize individual pride and sense of responsibility in caring for our natural resources.

How many people in total do you estimate will be impacted by this grant? Please identify the number of direct and indirect beneficiaries separately:

**Number of direct beneficiaries**

**Number of indirect beneficiaries (optional)**

**Please identify any diverse groups that you are specifically aiming to engage with this project or program.**

 Black-African American Women Persons with disabilities

**Based on the above, how many diverse people do you estimate will be impacted by this grant?**

**How will you measure the impact of the program to the community that will be funded by the grant?**

Mass media coverage, social media views, trail use statistics, event participation

**Have you identified any measurable outputs for this project?**

 Yes No

Please provide any measurable outputs you have identified, specific to this project or program.

**Output**

Number of plant stem

**Is this an output you can report on?** Yes No**Output 2 (optional)**

Number of existing tre

**Is this an output you can report on?  
(optional)** Yes No**Output 3 (optional)**

Sign in/participation r

**Is this an output you can report on?  
(optional)** Yes No**Have you identified any short-term or long-term outcome(s)?** Yes No

Please provide any measurable outcomes you have identified, including how this data will be collected.

**Outcome**

Trees Mulched (Cour

**Is this an outcome you can report on?** Yes No**Outcome 2 (optional)**

Area cleaned, Linear

**Is this an outcome you can report on? (optional)** Yes No**Outcome 3 (optional)**

People directly enga

**Is this an outcome you can report on? (optional)** Yes No

**Have all approvals that are needed to move forward with this project been obtained? (ex. Organizational approvals, local ordinances/permits obtained, etc.)**

Yes

No

**How will the American Water Charitable Foundation be recognized as a supporter of the program or project?**

Your support will be recognized at all our events, logos can be included on printed materials and signage if an approved logo is provided, we hope to invite you to dedication days if signs can be installed with your support.


## Supplementary Information

**If your grant were to be approved, would you prefer to receive funds via EFT or check?**

Check

Please note we cannot guarantee your chosen method.

**Please attach any documents you feel will support your application (optional)**

 **KAWC-EnvironmentalFoundation-ExhibitsV02.pdf** (<https://forms.benevity.org/a>)  
3.28 MB

Only provide photographs or videos that have been approved for public purposes.

## Voluntary Feedback

We are constantly trying to improve our application process to ultimately make it easier for you to submit your grant application. We appreciate insight into how long it took you to complete this application form. Your answer will only be used to improve our application form and **will not** influence your chance of receiving funding.

**How long did it take you to complete this application form?**

- Less than 1 hour
- 1-3 hours
- More than 3 hours
- Prefer not to answer

**How did you hear about this grant program?**

American Water employee

American Water website

---

## Almost Done!

Please review your application. To make changes, use the tabs at the top of the page to navigate back to the corresponding page.

### What's next?

Once you submit your request, you will receive an email notification that we have received your application. Following internal review, we'll let you know if your request has been approved or declined, provided no additional information is required. Please refer to Page 1 for grant cycle dates.

### Agreement

By submitting this application I confirm that I have the authority to submit this request and agree to the conditions described below.

All information contained herein is true and accurate to the best of my knowledge; Should the American Water Charitable Foundation agree to provide support for the initiative proposed in this application, I agree that information about this initiative may be highlighted on American Water communication channels, including but not limited to social media.

All projects are due within 12 months of grant award. If your application is approved, in whole or in part, we will require a status update, or final completion report, regarding success and impact of your project - this is due within 6 months. We will send you a reminder as that date approaches. Additional time, beyond 6 - 12 months, will be granted for larger projects as needed.

I consent to receiving email notifications regarding this request and any subsequent emails from the American Water Charitable Foundation or American Water that relate to this request or any future grants or sponsorships associated with this initiative.

- I have read the Agreement above and agree to all the terms therein.