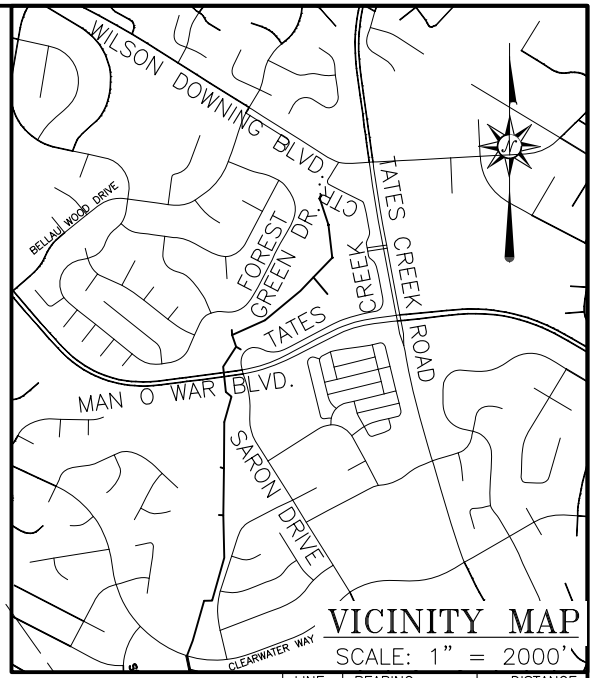
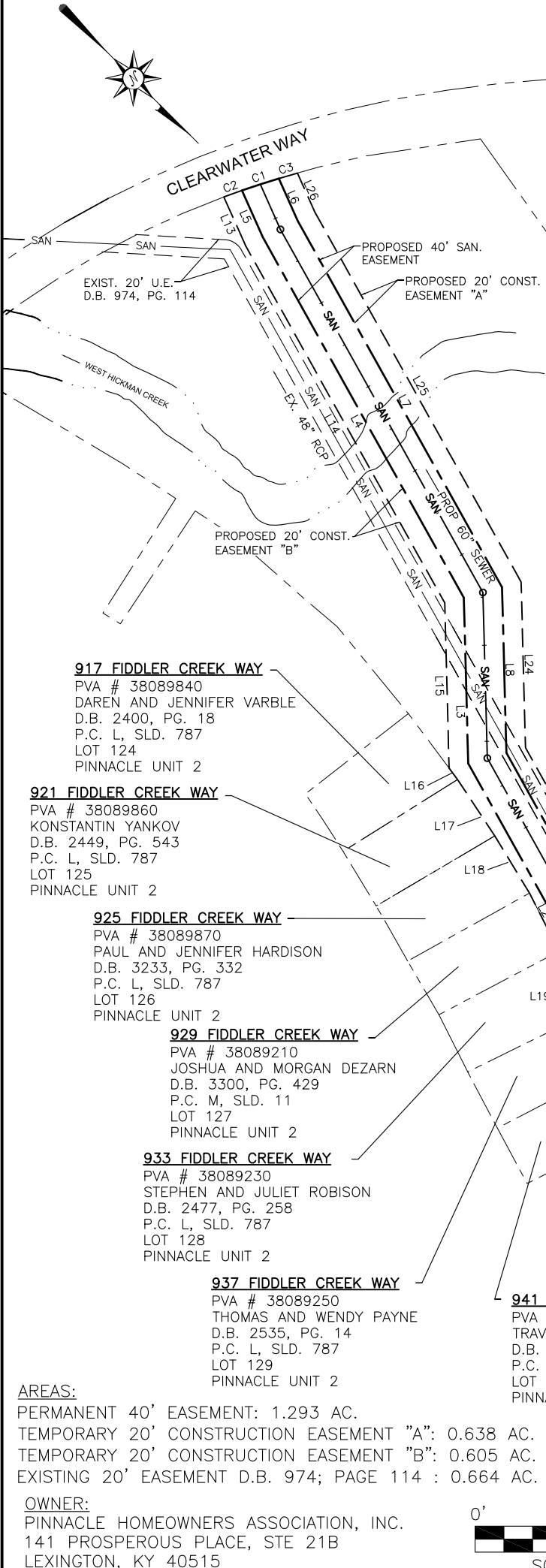


CURVE #	RADIUS	ARC LENGTH	CHORD LENGTH	CHORD BEARING	DELTA ANGLE
C1	971.39'	40.23'	40.23'	N 62°57'47" W	02°22'22"
C2	971.39'	20.06'	20.06'	S 64°44'28" E	01°10'59"
C3	971.39'	20.19'	20.19'	S 61°10'53" E	01°11'27"



VICINITY MAP
SCALE: 1" = 2000'

LINE	BEARING	DISTANCE
L1	S 01°26'22" E	420.94'
L2	S 15°50'33" W	344.06'
L3	S 43°29'33" W	172.47'
L4	S 15°50'53" W	427.46'
L5	S 20°57'30" W	53.35'
L6	N 20°57'30" E	48.19'
L7	N 15°50'53" E	436.41'
L8	N 43°29'33" E	172.47'
L9	N 15°50'33" E	328.14'
L10	N 01°26'22" W	410.45'
L11	N 82°15'51" E	40.24'
L12	S 82°15'51" W	20.12'
L13	N 20°57'30" E	55.74'
L14	N 15°51'31" E	425.21'
L15	N 43°29'33" E	172.47'
L16	N 08°13'25" E	14.76'
L17	N 11°35'04" E	70.34'
L18	N 13°46'53" E	69.56'
L19	N 18°03'54" E	201.55'
L20	N 01°26'22" W	426.19'
L21	S 82°15'51" W	20.12'
L22	S 01°26'22" E	405.20'
L23	S 15°50'33" W	320.18'
L24	S 43°29'33" W	172.47'
L25	S 15°50'53" W	440.44'
L26	S 20°57'30" W	44.54'



917 FIDDLER CREEK WAY
PVA # 38089840
DAREN AND JENNIFER VARBLE
D.B. 2400, PG. 18
P.C. L, SLD. 787
LOT 124
PINNACLE UNIT 2

921 FIDDLER CREEK WAY
PVA # 38089860
KONSTANTIN YANKOV
D.B. 2449, PG. 543
P.C. L, SLD. 787
LOT 125
PINNACLE UNIT 2

925 FIDDLER CREEK WAY
PVA # 38089870
PAUL AND JENNIFER HARDISON
D.B. 3233, PG. 332
P.C. L, SLD. 787
LOT 126
PINNACLE UNIT 2

929 FIDDLER CREEK WAY
PVA # 38089210
JOSHUA AND MORGAN DEZARN
D.B. 3300, PG. 429
P.C. M, SLD. 11
LOT 127
PINNACLE UNIT 2

933 FIDDLER CREEK WAY
PVA # 38089230
STEPHEN AND JULIET ROBISON
D.B. 2477, PG. 258
P.C. L, SLD. 787
LOT 128
PINNACLE UNIT 2

937 FIDDLER CREEK WAY
PVA # 38089250
THOMAS AND WENDY PAYNE
D.B. 2535, PG. 14
P.C. L, SLD. 787
LOT 129
PINNACLE UNIT 2

941 FIDDLER CREEK WAY
PVA # 38089260
TRAVIS AND KIMBERLY MEACHAM
D.B. 3204, PG. 204
P.C. L, SLD. 787
LOT 130
PINNACLE UNIT 2

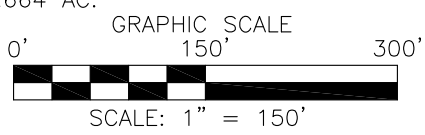
4250 CLEARWATER WAY
PVA # 38089420
PINNACLE HOMEOWNERS ASSOCIATION
LOT 1, PINNACLE DEVELOPMENT II, INC.
D.B. 2621, PG. 669
P.C. M, SLD. 878

EXIST. 20' U.E.
D.B. 974, PG. 114

REFERENCE CALL
S 82° 01' 54" W
172.15'

AREAS:
PERMANENT 40' EASEMENT: 1.293 AC.
TEMPORARY 20' CONSTRUCTION EASEMENT "A": 0.638 AC.
TEMPORARY 20' CONSTRUCTION EASEMENT "B": 0.605 AC.
EXISTING 20' EASEMENT D.B. 974; PAGE 114 : 0.664 AC.

OWNER:
PINNACLE HOMEOWNERS ASSOCIATION, INC.
141 PROSPEROUS PLACE, STE 21B
LEXINGTON, KY 40515



4124 WATERTRACE DRIVE
PVA # 38081800
LFUCG
D.B. 2294, PG. 54
P.C. L, SLD. 691



Environmental, Civil Engineering Consultants, Land Surveying
128 E. Reynolds Rd, Suite 150, Lexington, KY 40517
Ph.(859) 559-0516 - Fax: (859) 523-0095
www.visionengr.com

**EXHIBIT SHOWING
SANITARY SEWER EASEMENT
TO BE ACQUIRED FROM
PINNACLE HOMEOWNERS ASSOCIATION, INC.
4250 CLEARWATER DRIVE
LEXINGTON, KENTUCKY**