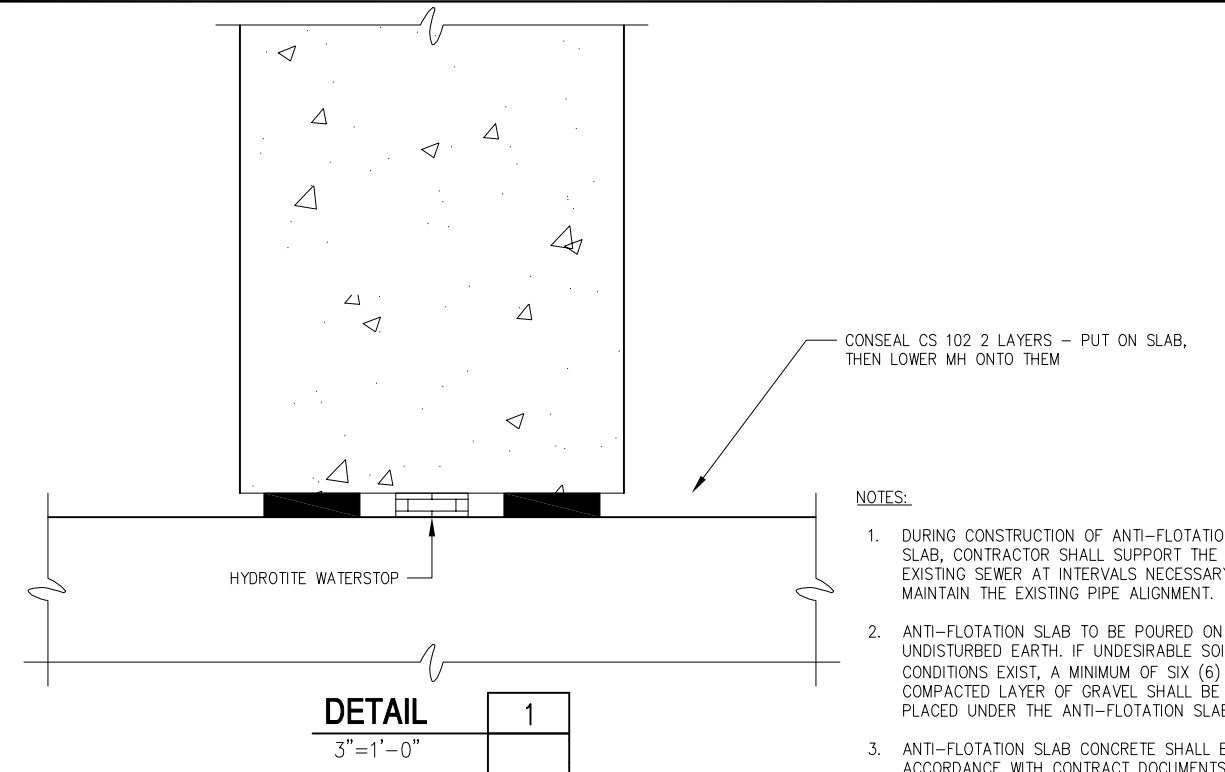
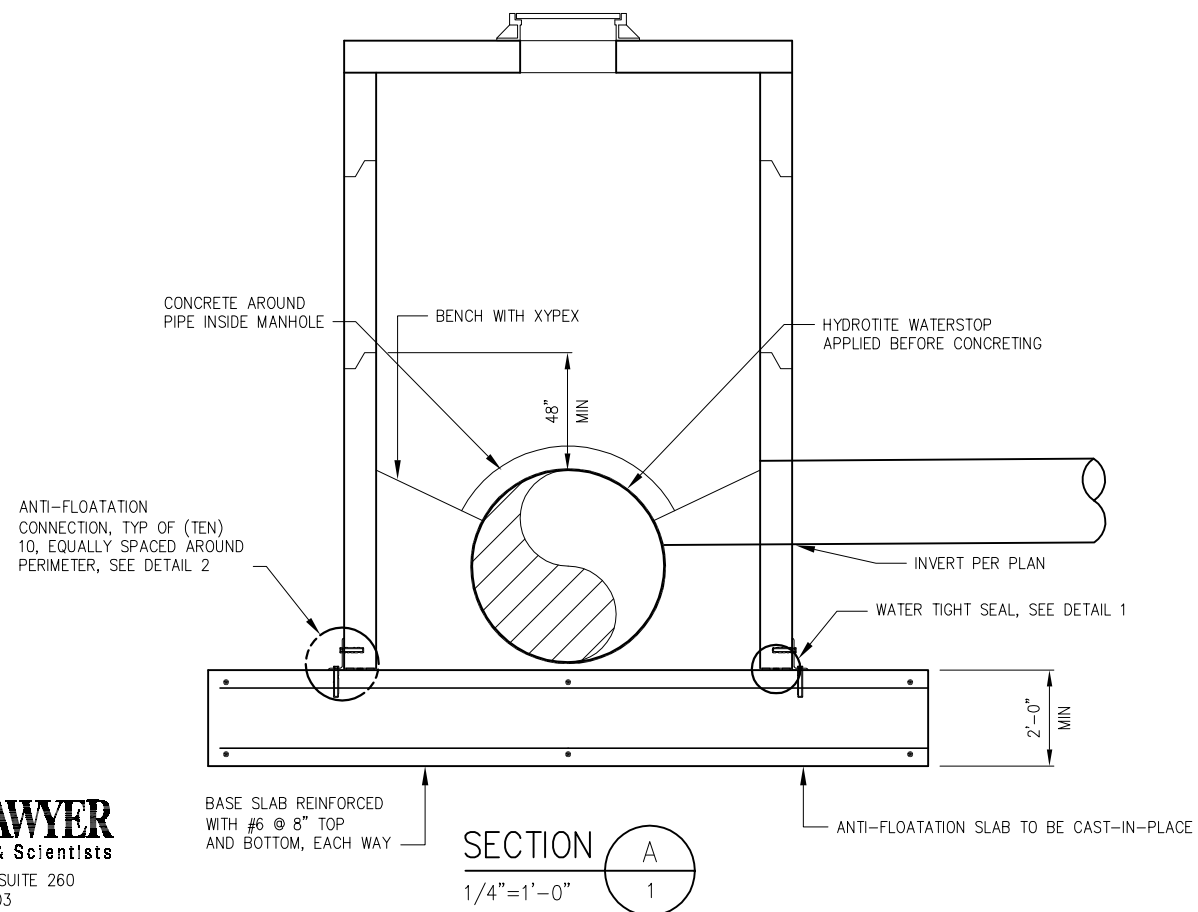
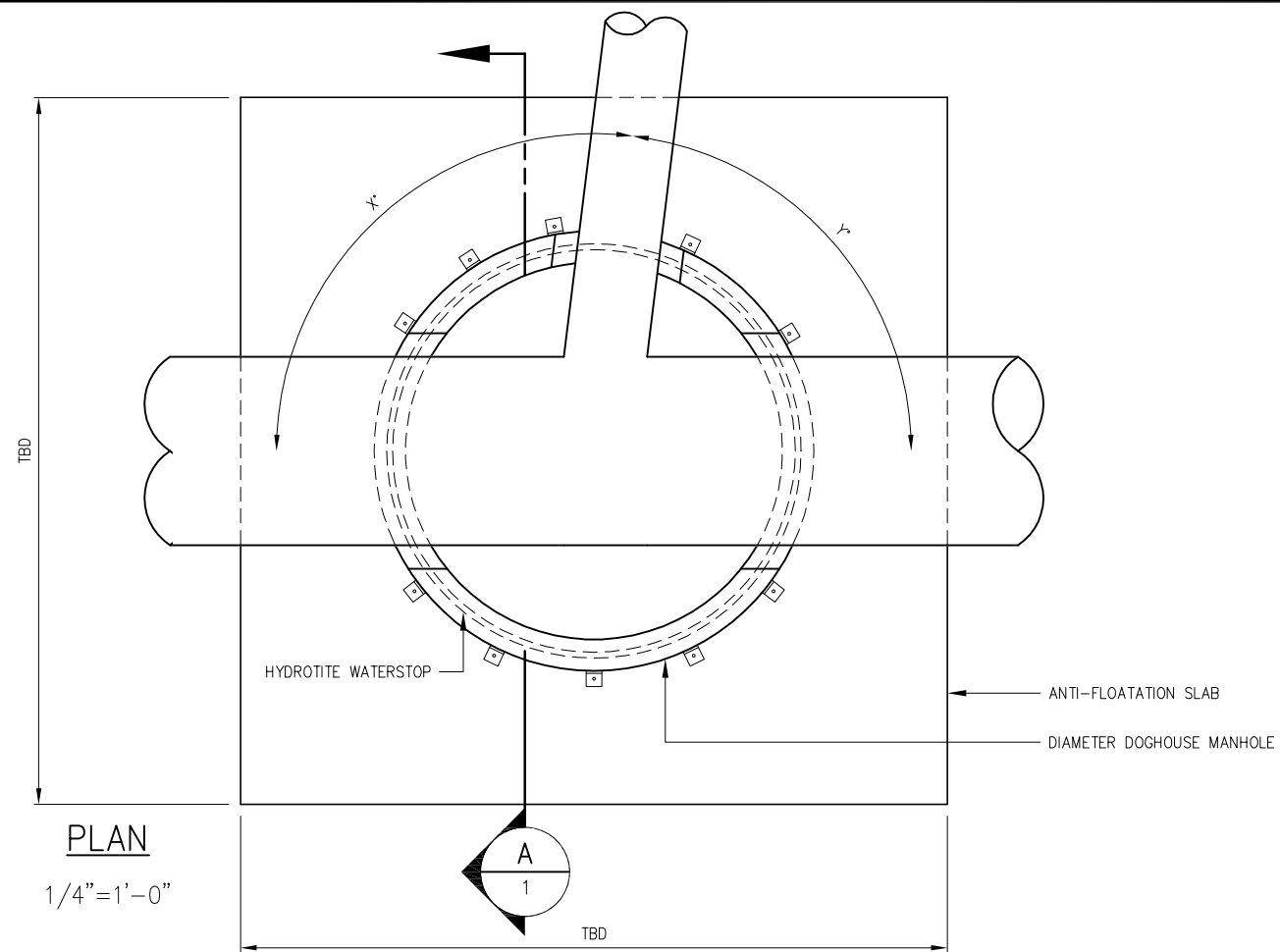


APPENDIX C

RMP Standard Details

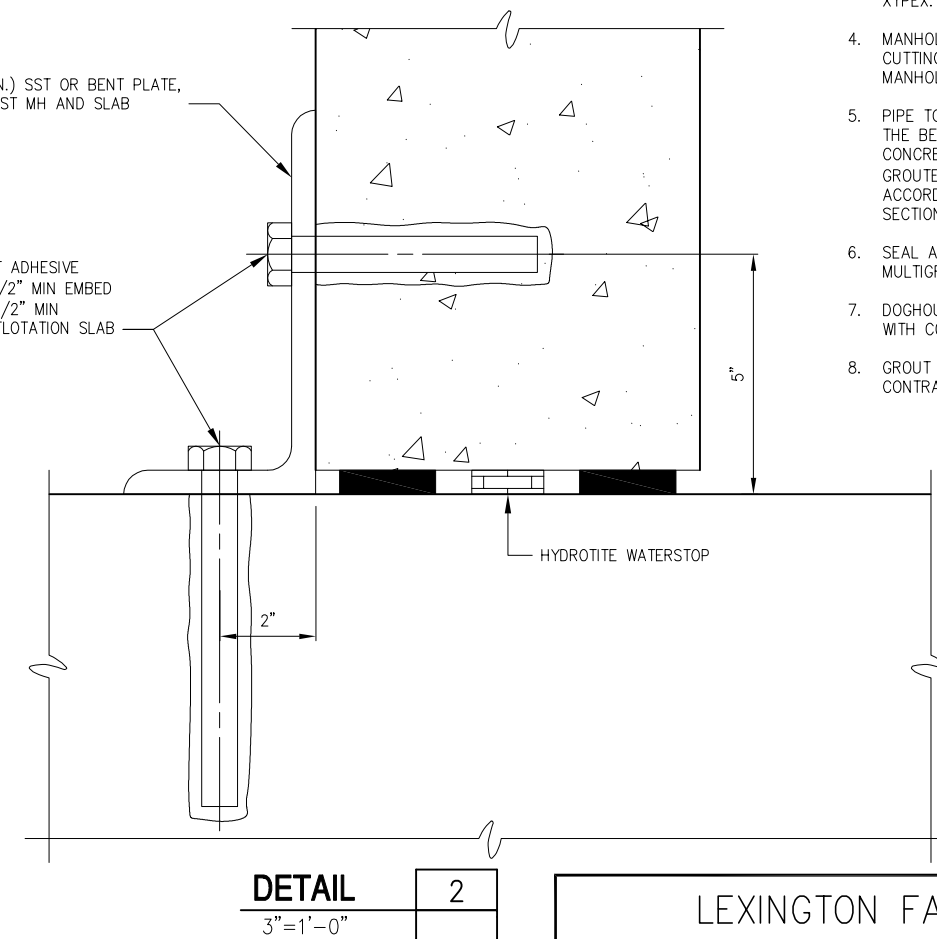


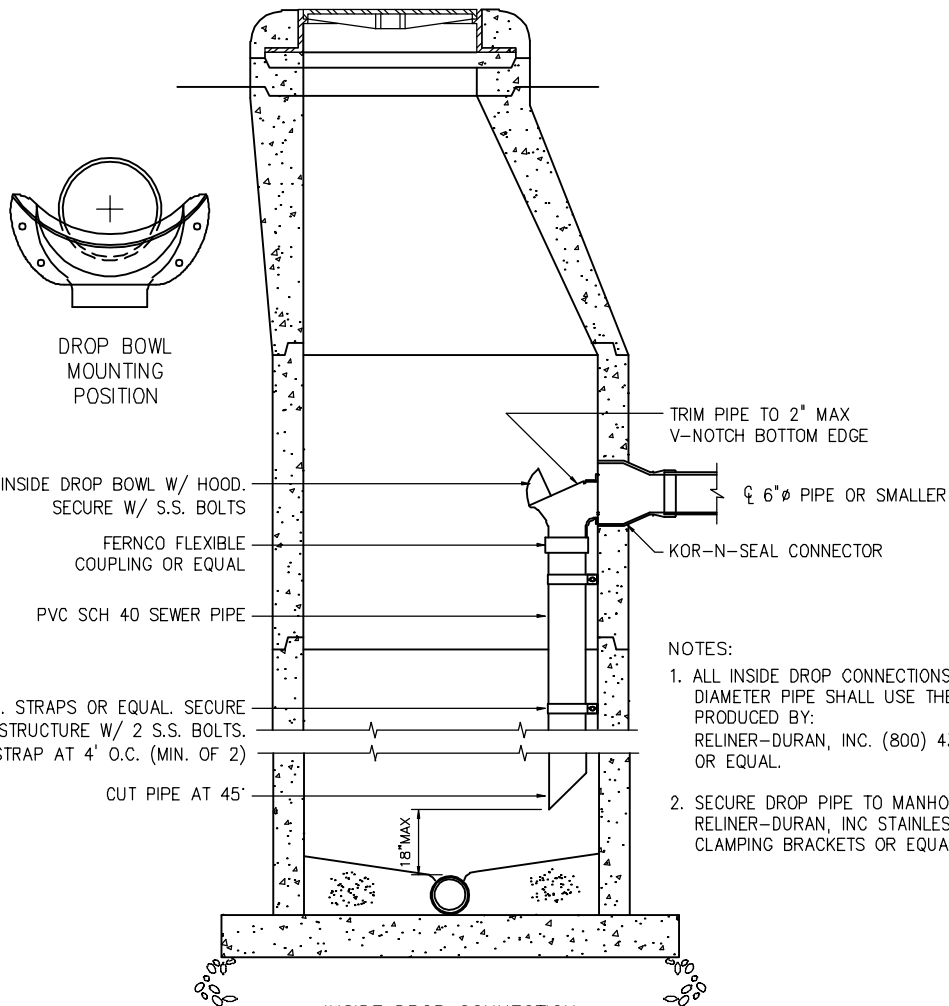
NOTES:

1. DURING CONSTRUCTION OF ANTI-FLOTATION SLAB, CONTRACTOR SHALL SUPPORT THE EXISTING SEWER AT INTERVALS NECESSARY TO MAINTAIN THE EXISTING PIPE ALIGNMENT.
2. ANTI-FLOTATION SLAB TO BE POURED ON FIRM, UNDISTURBED EARTH. IF UNDESIRABLE SOIL CONDITIONS EXIST, A MINIMUM OF SIX (6) INCHES COMPACTED LAYER OF GRAVEL SHALL BE PLACED UNDER THE ANTI-FLOTATION SLAB.
3. ANTI-FLOTATION SLAB CONCRETE SHALL BE IN ACCORDANCE WITH CONTRACT DOCUMENTS SECTION 03300, WITH MINIMUM 3,500 PSI, AND XYPEX.
4. MANHOLE TO BE VACUUM TESTED BEFORE CUTTING OUT THE PIPE ON THE INTERIOR OF THE MANHOLE.
5. PIPE TO BE CUT OUT AND REMOVED TO MATCH THE BENCH INSIDE OF THE MANHOLE. EXPOSED CONCRETE AND REINFORCING STEEL SHALL BE GROUTED WITH 1" OF NON SHRINK GROUT IN ACCORDANCE WITH CONTRACT DOCUMENTS SECTION 03600.
6. SEAL ANY LEAKS WITH AVANTI AV 202 MULTIGROUT.
7. DOGHOUSE MANHOLE SHALL BE IN ACCORDANCE WITH CONTRACT DOCUMENTS SECTION 02608.
8. GROUT SHALL BE IN ACCORDANCE WITH CONTRACT DOCUMENTS SECTION 03600.

L8x4x5/8 (L=4" MIN.) SST OR BENT PLATE, BOLTED TO PRE-CAST MH AND SLAB

3/4" DIAMETER SST ADHESIVE ANCHORS WITH 4 1/2" MIN EMBED INTO MANHOLE, 6 1/2" MIN EMBED INTO ANTI-FLOTATION SLAB





- NOTES:
1. ALL INSIDE DROP CONNECTIONS FOR SMALL DIAMETER PIPE SHALL USE THE DROP BOWL AS PRODUCED BY:
RELINER-DURAN, INC. (800) 434-0277 OR EQUAL.
 2. SECURE DROP PIPE TO MANHOLE WALL WITH RELINER-DURAN, INC STAINLESS STEEL ADJUSTABLE CLAMPING BRACKETS OR EQUAL.

INSIDE DROP CONNECTION
PIPING 6"Ø OR LESS

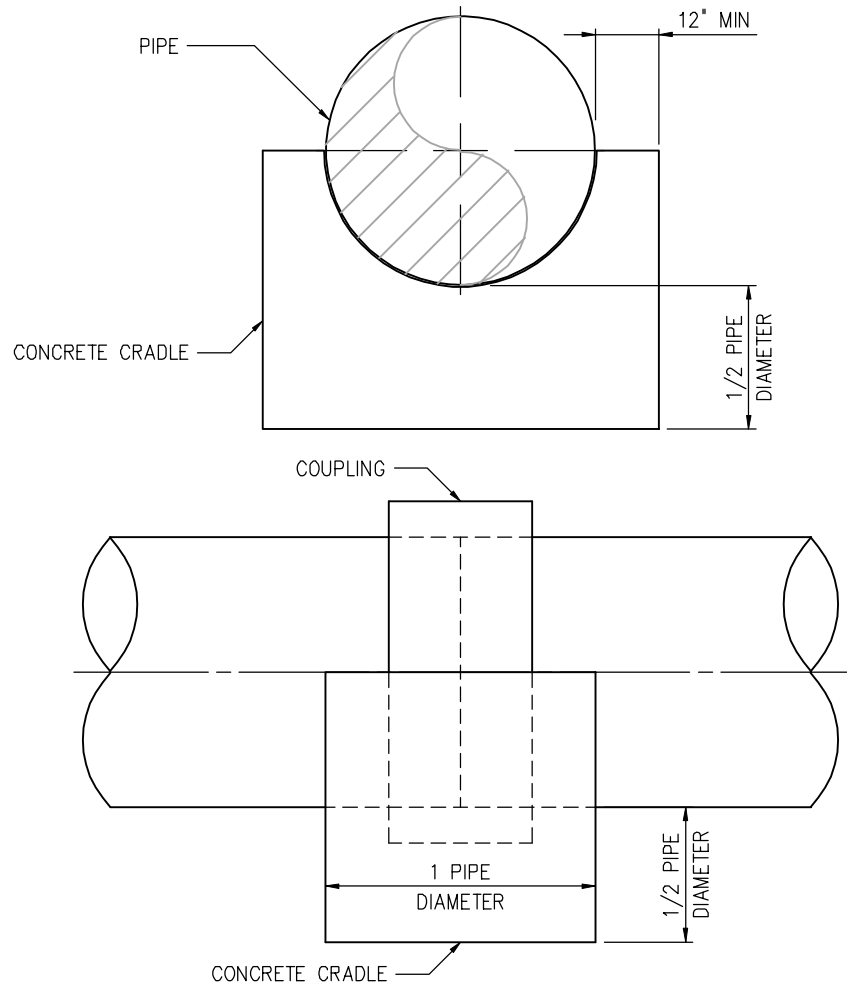
0260109A

LEXINGTON-FAYETTE URBAN COUNTY GOVERNMENT

INSIDE DROP CONNECTION PIPING

HAZEN AND SAWYER
Environmental Engineers & Scientists

444 LEWIS HARGETT CIRCLE, SUITE 260
LEXINGTON, KY 40503



HAZEN AND SAWYER
 Environmental Engineers & Scientists

444 LEWIS HARGETT CIRCLE, SUITE 260
 LEXINGTON, KY 40503

LEXINGTON-FAYETTE URBAN COUNTY GOVERNMENT

BURIED CRADLE PIPE SUPPORT