

**EXHIBIT B**

**HDR Statement of Qualifications**



## **Statement of Qualifications**

Professional Engineering Services for

# **Citation Boulevard Phase III-A Project**

**RFQ No. 40-2017**

Lexington-Fayette Urban County Government



October 16,  
**2017**





October 16, 2017

Mr. Todd Slatin  
Purchasing Director  
Lexington-Fayette Urban County Government  
Room 338, Government Center  
200 East Main Street | Lexington, KY 40507

RE: RFQ # 40-2017  
Statement of Qualifications for Engineering Services Citation Boulevard Phase III-A Project

Dear Mr. Slatin:

As transportation professionals, you care about what you create and want it to last. As your trusted partner on local roadway projects, we are here to support you, improve mobility, enhance safety, and create economic vitality. The HDR team is excited to have this opportunity to submit our qualifications for Citation Boulevard Phase III-A.

As demonstrated within this SOQ, our project team has been working on the Citation Boulevard corridor since 1990, including completion of the Viley Road (Citation Boulevard) Design Study Report, preliminary and final design for Phases I and II, and, more specifically, we previously completed a preliminary design for this proposed phase of Citation Boulevard. HDR's depth of experience, combined with our commitment to designing safe, efficient travel for every project, will allow our team to expedite delivery of a preliminary design and a final product that meets LFUCG's needs.

The same team that delivered Phases I and II of Citation Boulevard is also committed to the success of this project. Our leadership, Joe Cochran, Ben Edelen, and Jim Guinn have been engaged in this corridor since the beginning. Project Manager, Joe Cochran recently served in the same role on Citation Phase II and was involved in the design of Phase I. Technical Advisor and Public Involvement Lead, Ben Edelen, has been invested in the success of this project corridor for over 27 years. His understanding of the project history, complexities, agency involvement, and stakeholders will provide instant value to this phase of Citation Boulevard. No other consultant offers you the consistency, history, expertise, or positive results on this corridor.

The core members of our dynamic and integrated team live here and work here, utilizing this corridor on a daily basis – we recognize the importance of adding value to our local community. HDR's Lexington office has been collaborating with LFUCG on critical projects, including Citation Boulevard Phase I and II. The commitment we make to delivering quality solutions has always been a cornerstone of our ongoing success. Your success is our success.

We appreciate this opportunity and look forward to the possibility of completing our shared vision of the Citation Boulevard corridor.

Sincerely,



Joe Cochran, PE  
Project Manager

Ben R. Edelen, PE, PLS  
Sr. Vice President/Area Manager







# 01 Firm Qualifications & Specialized Experience



# 01 Firm Qualifications & Specialized Experience

## HDR's Local Services

### Transportation

- Roadway Design
- Planning
- Traffic & ITS
- Traffic & Revenue Studies
- Bridges & Structures
- Electronic Technology
- Geotechnical
- Real Estate & Right-of-Way
- Surveying
- Transit Planning & Design
- Value Engineering
- Stakeholder Outreach
- Environmental Services

### GIS

- Data Collection, Creation & Conversion
- Development & Integration
- Spatial Analysis
- Cartography & GPS

### Geotechnical

- Investigation
- Analysis
- Design

### Sustainability

- Green Infrastructure
- Renewable Opportunities
- Envision® Certifications

### Construction & Operations

- Contract Administration & Management
- Shop Drawing Reviews
- Resident Representatives

## Our Story

We believe that the way we work can add meaning and value to the world. We specialize in engineering, environmental, and construction services. While we are most well-known for adding beauty and structure to communities through smart infrastructure, we provide much more than that. We create an unshakable foundation for progress because our multidisciplinary engineering teams also include scientists, economists, builders, analysts, and artists.

**HDR's operating philosophy is to be an expertise-driven firm that delivers tailored solutions through a strong local presence.** Our

ability to draw upon company-wide resources and expertise is a great strength in meeting and exceeding your expectations. HDR provides a comprehensive suite of services and similar project experience, as demonstrated in detail throughout this document.

## History & Size

HDR was founded in 1917 and maintains regional offices in Lexington, Louisville, and Paducah Kentucky; and Nashville, Memphis, and Chattanooga, Tennessee. HDR is a service oriented firm with a strong commitment to our local communities. We emphasize communication and responsiveness on all of our projects and work in partnership with our clients to design solutions that meets the community's needs.

## Service Areas

HDR provides total infrastructure solutions that help clients manage complex projects in the following areas:

- Roadway Design Planning
- Traffic & ITS
- Alignment Studies
- Surveying
- GIS
- Geotechnical
- Value Engineering
- Environmental Services
- Sustainable Design
- Construction Services

At HDR, we uncover new ways of thinking and different ways of doing, carefully determining the right way forward for all of us. We take the time to get to know people, creating a network of meaningful relationships around the world.

## Qualifications

Meeting the mobility needs of the 21st century and beyond requires strategy and foresight. Our ability to bundle design, procurement, real estate, public involvement, and economics and financial services allows us to guide your project from concept to implementation and help you maximize the return on your transportation investment. Our technical expertise encompasses a bevy of disciplines, including roadway, structural, traffic, geotechnical, environmental, visualization, project controls and much more.





As a full-service firm, we offer a vast range of design capabilities. From local roadway design to the most complex highways, interchanges, and structures, we deliver cutting-edge ideas to meet our clients' every need.

### Urban Roadway Design

From the earliest stages of concept to implementation, we aim to maximize the return on your investment through our ability to bundle design, procurement, real estate, public involvement, and economic and financial services.

Urban roadway systems have evolved to include multi-lane highways, freeways, and high-occupancy vehicle lanes. Our roadway professionals apply the latest industry standards and techniques – including 3-D design – to the many elements of a roadway. We facilitate the design process by coordinating with our other in-house disciplines to adhere to federal, state, and local design criteria. Our designs also consider the wider social, economic, and environmental

contexts; we employ innovative materials and construction techniques and seek to preserve historic, scenic and environmental resources. Our focus is on designing safe, efficient travel conditions for every project.

HDR's local project team members have enjoyed a 40-year relationship with Lexington-Fayette Urban County Government (LFUCG), including more than 30 years of roadway project design experience, including:

- **Citation Boulevard Study, Section I and II Design, Phase I Design and Environmental Assessment**
- Liberty Road Study, Preliminary Design, and Section I Final Design
- Starshoot Parkway Extension
- Limestone Street
- Clays Mill Widening at Man O' War Boulevard
- Expansion Area Boulevard Design Study Report
- Man O' War Boulevard
- Martin Luther King Jr. Boulevard
- Cornwall Drive Culvert
- Trinity Road Stormwater Improvements
- Halifax Culvert Improvements

This experience has involved a variety of projects with cumulative construction costs exceeding \$160 million. These projects were performed on-schedule and within budget.

### Sustainability

We partner with our clients to deliver integrated sustainable solutions. More than two decades ago, we established our sustainable solutions program to integrate sustainability into all of our business practices. Our specialists are leaders in climatology, natural resources, renewable energy, Envision®, LEED, commissioning, measurement and verification, and community planning. This allows us to provide you with solutions that are good for your business, your communities, and for our planet.

### Our Commitment to You

At HDR, we do things right to make great things possible, for you. We listen first to understand your needs, then design smart and keep you involved throughout every step of every project to assure that your goals are met. This is our commitment to LFUCG.





## 02 Project Team Expertise & Technical Competence





# 02 Project Team Expertise & Technical Competence

## The Right Team

Successful roadway corridor and intersection projects require a talented and experienced team of professionals who can dedicate themselves to achieving LFUCG's goals. In response, HDR has assembled a project team that offers unmatched experience conquering challenges identical to those that may be present on your projects.

The HDR project team has been carefully crafted to leverage the knowledge and experience of our local resources to effectively meet your goals. Resume summaries are

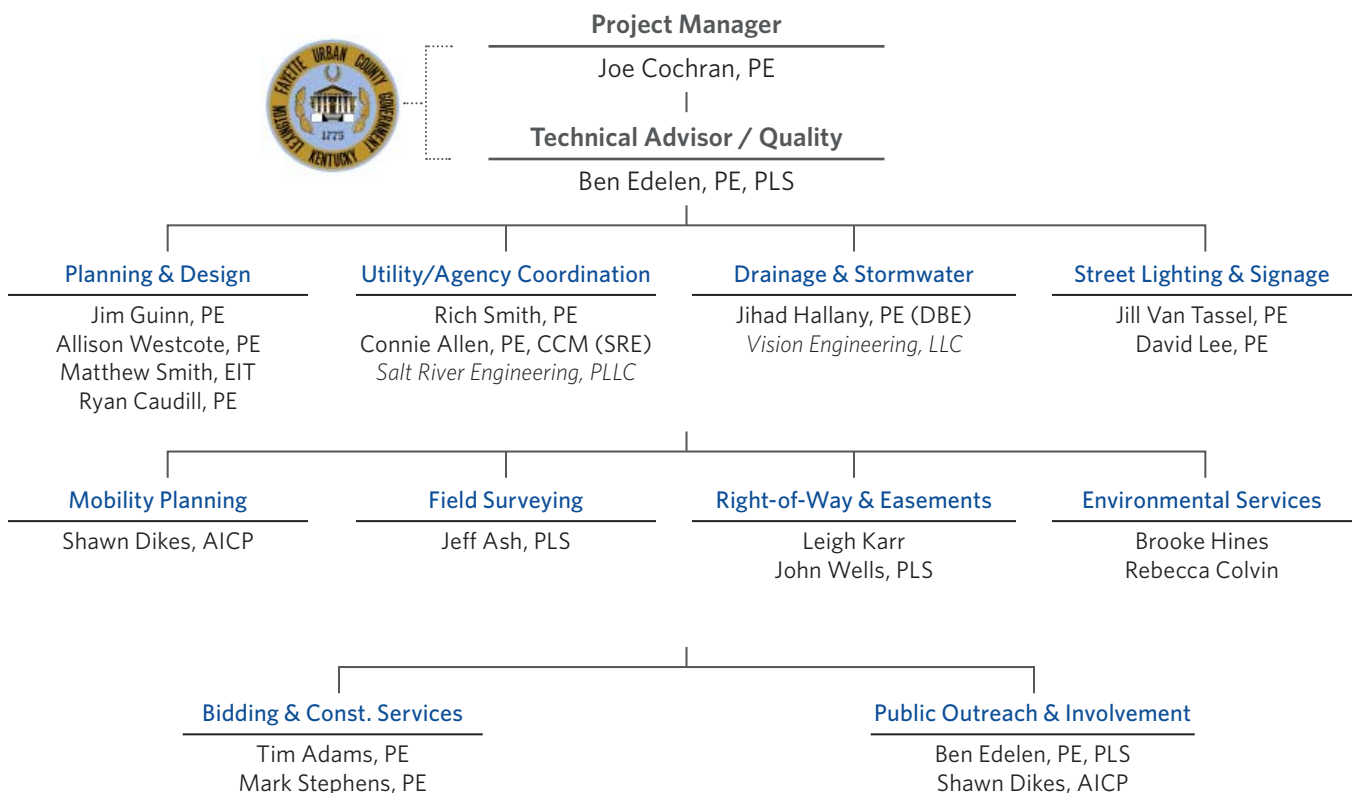
provided on the following pages, highlighting our Project Manager's expertise and other key team members' specific qualifications.

## Continuity of Personnel & Risk Management Plan

Our employee owners fuel our entrepreneurial culture and help instill accountability. Minimizing turnover is critical to our future and the successful execution of long-term contracts. However, we have established transition plans, should a staff member need to be replaced,

and have successfully completed transitions when necessary. Likewise, should our currently named project manager position need to be filled by others, we have equally qualified candidates already named among the remaining roster of engineers.

Once we begin a project and our project manager is assigned, we commit the availability of this project manager for the life of the project.



# Resume Summaries

**Our greatest asset is our people.** For your project, we have customized a team to leverage the knowledge and experience of our technical resources to effectively meet your goals. Most of our team members have a long history with our organization, creating a stable leadership core to guide long-term strategies and daily operations. The following resume summaries highlight the expertise and commitment of HDR's Project Manager and other key team members' specific qualifications. Detailed resumes for all team members are available upon request.



**OFFICE LOCATION**  
2517 Sir Barton Way  
Lexington, KY 40509

**EDUCATION**  
B.S., Civil Engineering,  
University of Kentucky

**REGISTRATION**  
Professional Engineer:  
KY, OH

## Joe Cochran, PE

### Project Manager

Joe has more than 21 years of experience on complex and high-profile transportation engineering and highway design projects. He has served as Project Manager and Project Engineer on a multitude of roadway and intersection planning and design projects, including geometric and drainage design, preparation of plans, assisting in survey work, and leading public involvement.

As HDR's Kentucky Highway Section Manager, Joe's responsibilities regularly include management of projects, roadway design and coordination of teams and supervision of others. Joe has served as Project Manager on numerous multi-disciplined teams throughout his career. His strong organizational skills and ability to team build have led to successfully completing complex and challenging design projects while navigating through obstacles as they arise. His ability to motivate others and create a sense of team continues to keep projects on track and within budget.

### **Citation Boulevard Phase I and II Design, LFUCG, Fayette Co., KY**

Project Engineer for design study report and Phase I and Project Manager for Phase II plans for a 5.2 mile four-lane divided arterial highway.

### **Liberty Road/Todds Road (KY 1927), Fayette Co., KY**

Project Manager for preliminary plans with environmental documentation and Final Design for Section I.

### **Starshoot Parkway, Fayette Co., KY**

Extension of Starshoot Parkway approximately 950 feet to tie to Liberty Road Section 1A.

### **New Circle Road Improvements, Fayette Co., KY**

Project Engineer for the \$58 million widening of New Circle Road from four to six lanes.

### **Nicholasville East Bypass Phase I and II, KYTC - District 7, Jessamine Co., KY**

Design for the \$73 million Bypass which include a Single Point Diamond Interchange to connect the proposed and existing Bypass to US 27 north of Nicholasville.

### **I-75 Noise Abatement Project, LFUCG, Fayette Co., KY**

Project Manager for preparation of preliminary design and development of final construction plans for a noise wall along southbound I-75 in Lexington.

### **US 68, Fayette and Jessamine Co., KY**

Project Engineer for Phase I preliminary alternative design and Phase II final construction plans. An environmental assessment was performed during the Phase I design and a Finding of No Significant Impact (FONSI) was approved.

### **Mountain Parkway Widening Phase I, Wolfe Co., KY**

Design Lead for Phase I design, environmental studies, and document preparation of the 11-mile section of Mountain Parkway from KY 191 to West of KY 205.

### **Kentucky Horse Park Internal Roadway Improvements, Fayette Co., KY**

Project Manager for the final design stage of the project which included preparation of final plans and specifications for improvements to four internal roadways and a new connector road and parking area.



**OFFICE LOCATION**  
2517 Sir Barton Way  
Lexington, KY 40509

---

### **Ben Edelen, PE, PLS**

#### **Technical Advisor, Quality Control, Public Outreach & Involvement**

Ben, a Senior Vice President with HDR, has over 33 years of experience on major roadway projects throughout the Commonwealth of Kentucky. His impressive career includes over \$1 billion in successful transportation projects. Ben's general expertise includes roadway and intersection planning, design, and preparation of plans; supervision of teams, coordination of subconsultant's representatives and representatives of LFUCG. Ben is ultimately responsible for stakeholder communication, timely completion, and the high quality of work you've come to rely on HDR to provide.

#### **Citation Boulevard Phase I and II Design, LFUCG, Fayette Co., KY**

Project Manager for design study report and Phase I and II plans for a 5.2 mile a 4-lane divided arterial highway.

#### **New Circle Road Improvements, Fayette Co., KY**

Project Manager for the \$58 million widening of New Circle Road from four to six lanes.

#### **World Equestrian Games, Statewide Transportation Planning & Design, Fayette Co., KY**

Project Manager providing transportation planning and design services for the 2010 World Equestrian Games at the Kentucky Horse Park.

---



**OFFICE LOCATION**  
2517 Sir Barton Way  
Lexington, KY 40509

---

### **Jim Guinn, PE**

#### **Roadway Planning & Design Lead**

Jim, one of HDR's premier roadway senior project managers, has over 31 years of transportation engineering experience and has served as Project Manager and Engineer on numerous successful projects across the Commonwealth, including his involvement in the planning and design of Liberty/Todds Road Improvements, Man-o-War Boulevard, and Martin Luther King Boulevard projects with LFUCG. His overall experience includes design, preparation of plans, public involvement, and project team management.

#### **Citation Boulevard Phase I and II Design, LFUCG, Fayette Co., KY**

Project Engineer for design study report and Phase I and II plans for a 5.2 mile a 4-lane divided arterial highway.

#### **New Circle Road Improvements, Fayette Co., KY**

Design Engineer for the \$58 million widening of New Circle Road from four to six lanes.

#### **South Limestone Streetscape Design-Build - Fayette Co., KY**

Traffic control plans for lane closure and detours during the South Limestone Complete Street Design near the University of Kentucky campus.

---



**OFFICE LOCATION**  
2517 Sir Barton Way  
Lexington, KY 40509

---

### **Rich Smith, PE**

#### **Utility/Agency Coordination**

Rich is a Project Manager with expertise in the areas of wastewater collection and treatment, sewer system rehabilitation, pumping station evaluation and design, facilities planning, rate studies, water transmission and distribution, and construction inspection and management. Rich also has experience in the areas of water distribution system modeling, site development, plant and job site safety, cross-connection control, and regulatory compliance.

#### **Citation Boulevard Phase I and II Design, Fayette County, KY**

Utility relocations and coordination for Phase II of the 4-lane divided arterial highway.

#### **Starshoot Parkway, Fayette Co., KY**

Project Engineer for the relocation of 2,000 feet of 8-inch Greenbrier force main and 1,050 feet of 24-inch North Elkhorn force main. The project included open cut construction and nearly 400 feet of steel encasement pipe.





**OFFICE LOCATION**  
3399 Tates Creek Rd  
Lexington, KY 40502

### **Jihad Hallany, PE (Vision Engineering, LLC - DBE)**

#### **Drainage & Stormwater Modeling**

Jihad serves as Principal in Charge since founding Vision Engineering, LLC in 2003. He is responsible for the operation of a 13 + person office that includes engineering, environmental, geotechnical, construction service, inspection, and surveying disciplines serving both public and private clients. Jihad specializes in water resources, environmental design, and civil/site development.

#### **Citation Boulevard Phase 2 (Georgetown Rd. to Leestown Road), Lexington, KY**

Scope of services consisted of conducting detail drainage design, inlet spread analysis, stormwater sewer modeling, and bridge modeling at Bracktown Branch.

#### **Polo Club Boulevard and Hamburg East-Stormwater Management Plan, Lexington, KY**

Modeling, design, permitting with COE/KDOW/FEMA, bidding, construction administration, and inspection of 300 linear feet of multi-plate aluminum arch culvert, two regional detention basins, and five regional water qualities (wetlands).



**OFFICE LOCATION**  
400 W. Main Street  
Louisville, KY 40202

### **Shawn Dikes, AICP**

#### **Mobility Planning & Public Involvement**

Shawn has over 23 years of Multimodal Transportation Planning experience, including integrated bicycle, pedestrian, and transit planning services for corridor and neighborhood studies and extensive experience in a variety of public involvement activities. Shawn was a former member of the National Committee on Uniform Traffic Control Devices and served on the Chapter 9 Committee responsible for all Bicycle Markings and Signs. He has also been involved in Neighborhood Plans throughout Lexington-Fayette County, including one for Windburn-Russell Cave, a neighborhood right in the heart of the proposed Citation Boulevard extension alignment.

#### **Winburn Russell Cave Neighborhoods Small Area Plan, Lexington, KY**

Lead transportation planner for the development of the Small Area Plan incorporating multimodal investments, including pedestrian, bike and transit.

#### **Armstrong Mill Neighborhood Small Area Plan, Lexington, KY**

Lead transportation planner for the development of neighborhood scale multimodal solutions, including access, mobility and multimodal connectivity.

#### **South Elkhorn Bikeway, Lexington, KY**

Lead planner assisting in preliminary design oversight and quality assurance for a 2-mile multi-use trail facility along a scenic watershed route.



**OFFICE LOCATION**  
2517 Sir Barton Way  
Lexington, KY 40509

### **Jeff Ash, PLS**

#### **Field Surveying Lead**

Jeff has over 38 years of land surveying experience, including estimating and scheduling surveys, establishing existing boundaries and preparation of right-of-way strip maps/ parcels for acquisition on highway projects; GPS static/fast static with post-processing to establish aerial and survey control monuments; surveying performed with conventional methods and GPS RTK surveys; and ALTA/ACSM land title surveys, final record plats and other boundary surveys.

#### **Citation Boulevard Phase I and II Design, LFUCG, Fayette Co., KY**

Survey Manager for design study report and Phase I and II plans for a 5.2 mile 4-lane divided arterial highway.

#### **New Circle Road Improvements, Fayette Co., KY**

Set high accuracy targets for mobile LIDAR at 800-foot intervals to map and model existing pavement, completed topo field checks, coordinated with utilities.

#### **Nicholasville East Bypass, Jessamine Co., KY**

Set aerial mapping control points, all core holes, and established all existing right-of-way and property corners.



**OFFICE LOCATION**  
2517 Sir Barton Way  
Lexington, KY 40509

## Leigh Karr

### Right-of-Way & Easements Lead

Leigh Karr, with over 30 years of experience, recently joined HDR as Right-of-Way Project Manager. Prior to HDR, Leigh served as Right-of-Way and Utilities Supervisor for LFUCG for 22 years. His experience also includes ROW lead agent, negotiating with property owners and tenants, conducting/reviewing appraisals, coordinating inspectors and appraisers, acquiring easements, assisting in design issues, preparing and reviewing appraisals, property management, reviewing ownership documents, and preparing condemnation packages.

### **Louisville Bridges, Section 4, KYTC, Jefferson Co.**

Oversight of acquisition and relocation services involving 109 parcels for this highly sensitive I-265 extension project.

### **KY 114 Mountain Parkway Utility Easements, KYTC, Magoffin Co., KY**

Obtained the utility easements for various entities across 22 parcels.

### **KY 44 Intersection, KYTC, Bullitt Co., KY**

Responsible for MARS evaluations, negotiations, tendering offers, relocation services, Acquisition Payment packets and closings.



**OFFICE LOCATION**  
2517 Sir Barton Way  
Lexington, KY 40509

## Brooke Hines

### Environmental Services Lead

Brooke recently joined HDR with 17 years of experience, in both the public and private sector. Brooke began her career in environmental consulting shortly after graduating with a Bachelors in Natural Resources. After 10 years as lead project manager for threatened and endangered species surveys at various firms, Brooke began her career in the public sector as the state bat ecologist for Kentucky Department of Fish & Wildlife Resources. While with KDFWR, she coordinated with many state and federal agencies on policy-related issues, provided comments on biological assessments, reviewed state guidance for bat surveys, and was on the writing team for the Indiana bat Survey Guidance.

### **Wildlife Habitat Council**

Conservation Certification Reviewer. Provided independent, third party analysis of corporate applications for WHC Conservation Certification by: reading and scoring corporate applications, and providing objective justification for scores

### **KY Fish & Wildlife**

Wildlife Biologist IV - Bat Ecologist. Supervised, planned, and developed the endangered species program by managing Kentucky's bat populations through current surveillance techniques, monitoring strategies, and relevant research practices. Utilize current research and knowledge regarding White-nose Syndrome (WNS) to make informed management decisions.



**OFFICE LOCATION**  
2517 Sir Barton Way  
Lexington, KY 40509

## Tim Adams, PE

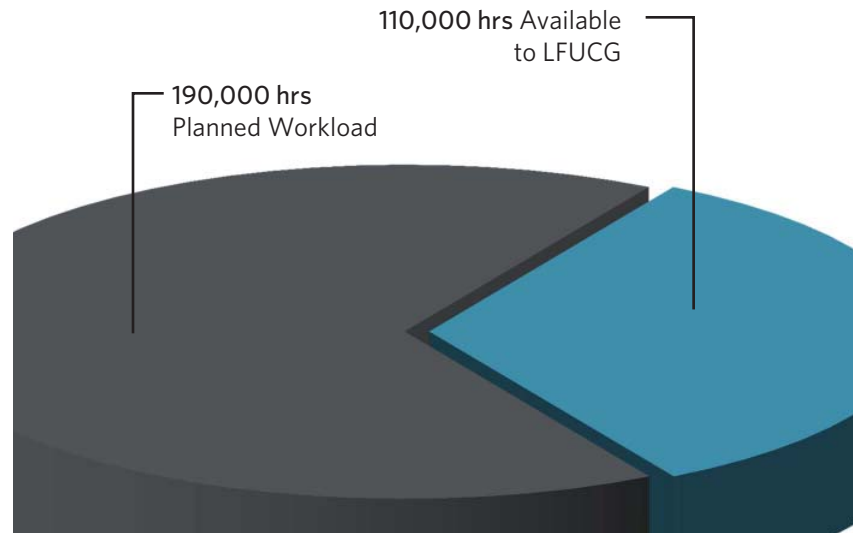
### Bidding, Construction Administration & Inspection Lead

Tim joined HDR following a 23-year career with the Kentucky Transportation Cabinet, where he served in a number of engineering management positions, including one year as Branch Manager of Construction in Fayette County (District 7). His experience in all areas of project development and delivery includes construction surveys, location and design, right-of-way, contract document preparation and interpretation, constructability reviews, value engineering, and field implementation. Tim has administered many different types of contracts from bridge replacements, spot improvements; slide corrections, to major interstate and urban construction.

### **I-75 Southbound and Northbound Improvements, Fayette Co., KY**

Rehabilitation of the southbound and northbound pavement. Auxiliary lanes were added for the Newtown Pike (KY922) and Winchester Road (US60) interchanges which included bridge widening at Cane Run Creek. Complex traffic control issues were encountered and mitigated especially at the I75/I64 merge area at the northern split.

Together, we make great things possible. Identifying your unique needs, we pull together the top minds and resources to design the smartest solutions for your challenges.



## Workload & Commitment

We understand the importance of meeting project schedules. The capacity to accomplish work in a strict timeframe requires strong and experienced leaders backed by skilled team members. Our personnel are committed to providing sufficient time and effort to produce a quality product.

Not only do we understand the importance of meeting project schedules, we understand our clients' needs for selecting the right team members for each job. As previously discussed and highlighted by our project team organizational chart, **HDR offers the depth of experienced personnel to meet any of LFUCG's needs, and the flexibility to customize our team to each phase of this project, as needed.** With this in mind, our team members were carefully selected not only for their expertise, but also for their availability to work on the project for its duration. We follow well established and time proven procedures to manage our project work. You can rely on us to successfully deliver this project.

HDR has an annual Kentucky staff capacity of approximately 300,000 hours, of which approximately 190,000 hours are planned, leaving 110,000 hours of capacity remaining for future work. Therefore, we do not anticipate any workload problems associated with completing Citation Boulevard Phase III-A. Joe Cochran, Ben Edelen, Jim Guinn, and other key personnel, are positioned to begin work immediately. Our local staff of approximately 150 professionals and support staff can be supplemented on an as-needed, cost-effective basis with other HDR offices if required, on this project.





## 03 Past Record of Performance



# 03 Past Record of Performance

Our goal is to set the industry benchmark for excellence in services we provide to our clients. We accomplish this through work well done, staying true to purpose, and exercising discipline.



## Previous LFUCG Experience

### **Citation Boulevard Phase I Design & Environmental Assessment**

This project involved preparation of final roadway plans for Phase I of Citation Boulevard and completion of an EA of the entire 5.4-mile corridor. The project was a unique four-lane divided highway with a 40-foot raised median, 10-foot wide curb lanes, and a minimum 4:1 side slopes. The bridge over Cane Run Creek included special architectural finishes and rails to enhance the park-like setting.

### **Citation Boulevard Phase II Final Design**

Citation Boulevard Phase II, connecting Section I at Jaggie Fox and providing a connection to Leestown Road, includes 2.5 miles of urban roadway design, right-of-way and utility relocation plans, and CSX Railroad overpass. The project will also provide bikeway connectivity between Masterson Station Park to Coldstream Park through widened curb lanes and wider sidewalks. A separated, multi-use path has been designed to provide a connection from the roadway to the multi-use path in the greenway connecting to Masterson Station.

### **Liberty Road Phase I Design & Section I Final Design**

A strategic part of the Lexington Area Metropolitan Planning Organization Transportation Plan, this project was an urban design that fluctuated from a four-lane grass median divided roadway to a three-lane section and incorporated a bike lane.

### **Starshoot Parkway Extension**

This project consisted of extending the four-lane boulevard 950 feet from existing Starshoot to Liberty Road. A bridge and shared use path were included in the project.

### **Limestone Street Streetscape/Utilities**

HDR provided services during construction of the Limestone Street Streetscape Project. Our services included design and coordination of all utility relocations within the corridor, providing a maintenance-of-traffic plan, producing encroachment permits, producing 23 easements for all utility impacts to private property, and assisting with property owner meetings and updates.

## List of Similar Clients

Our team of professionals has proven experience and extensive capabilities in the areas identified in the Scope of Services. **The following presents client references highlighting the HDR team's overall capabilities for successful management on similar projects.** We encourage your to contact these individuals to learn more about our past experience.

**Andrew Grunwald, PE**, Municipal Engineer Senior  
Lexington-Fayette Urban County Government  
101 East Vine Street, 4th Floor | Lexington, KY 40507  
☎ 859-258-3410 | ✉ agrunwal@lexingtonky.gov

Similar Projects: Citation Boulevard

**Keith Lovan, PE**, Municipal Engineer Senior  
Lexington-Fayette Urban County Government  
101 East Vine Street, 4th Floor | Lexington, KY 40507  
☎ 859-258-3410 | ✉ Klovan@lexingtonky.gov

Similar Projects: Liberty Road, Starshoot Parkway Extension

**Robin Sprague, PE**, Project Development Branch Manager  
Kentucky Transportation Cabinet, Department of Highways, District 7  
763 West New Circle Road | Lexington, KY 40512  
☎ 859-246-2355 | ✉ Robin.sprague@ky.gov

Similar Projects: Liberty Road, New Circle Road

**Joshua Samples, PE**, Project Manager  
Kentucky Transportation Cabinet, Department of Highways, District 7  
763 West New Circle Road | Lexington, KY 40512  
☎ 859-246-2355 | ✉ Joshua.samples@ky.gov

Similar Projects: Citation Boulevard, Liberty Road, New Circle Road

**Patrick Madden**  
Hamburg Place Development  
2517 Sir Barton Way | Lexington, KY 40509  
☎ 859-299-7028

Similar Projects: Polo Club Boulevard, Sir Barton Way, Pink Pidgeon Parkway

## Similar Project Experience

### Creating Value that Lasts

Improved safety, mobility, and reliability create more efficient travel. These enhancements expand access for all and foster stronger communities. The result is more than just a way to travel between places. The result is a better quality of life. A well-planned, designed, constructed and managed roadway will do all of the above, sustainably, for years to come.

### Our experience makes it possible

The following project descriptions demonstrate innovative solutions that will be applied to your project's challenges. In these case studies, we employed cost-effective strategies, similar to those required in your scope of work. These projects represent successful partnerships with our clients – reaching performance goals and delivering within the required schedule.





## Viley Rd. Design Study Report

LFUCG | Lexington, KY

HDR completed preliminary plans and environmental assessment for this section of Viley Road, extending from west of Leestown to Russell Cave. Through the preliminary design process, Citation Boulevard was developed as a four-lane divided arterial highway from Leestown Road to Newtown Pike. Narrowing to a 40-foot street, the character of the roadway changes to collector from Newtown Pike to Russell Cave Road. Design for the existing Viley Road, west of Leestown, included reconstruction to provide a transition section from the two-lane existing road to the four-lane arterial.

A corridor study was initially undertaken, utilizing existing LFUCG mapping. A single corridor was approved for further study, mapped to a more precise detail, and used as the basis for the design study report. As alternatives were developed, meetings were held with LFUCG and KYTC to discuss and eliminate alternatives. A preferred alignment was determined and preliminary line and grade plans were approved.

The report provided preferred alignment, grade, typical section, access points, principal drainage, construction cost estimates, and background data that was used as a basis for the design of the arterial highway by LFUCG. The Design Study Report has been used as a cornerstone for all development between Leestown Road and Russell Cave Road in Fayette County.



## Citation Boulevard Ph I & II

LFUCG | Lexington, KY

Citation Boulevard, today, is a four-lane divided arterial highway that creates a partial bypass for Lexington. HDR was selected to perform final design plans for Phases I and II, coordinating with LFUCG, KYTC District 7, and the Lexington Area MPO throughout the design process.

Phase I connects Newtown Pike to Georgetown Road, including a 40-foot wide raised median and 10-foot wide curb lane. The bridge over Cane Run Creek included special architectural finishes and rails to enhance the park-like setting. Access locations, established during preliminary plans, were designed to accommodate residential and commercial development. HDR met a fast-track deadline for final plans for Phase I, including FONSI approval.

Phase II connects Georgetown Road to Leestown. HDR provided final design plans that included street lighting, right-of-way, utility relocations, and a CSX railroad overpass. Bike connectivity between Masterson Station Park and Coldstream was provided through widened curb lanes and sidewalks, and a separate multi-use path at Bracktown Branch. Connections to existing roads and planned residential developments required coordination with multiple design groups and LFUCG staff. Final plans were completed in 2013. The project was part of a combined construction letting with the Leestown Road improvements and widening project prepared by KYTC District 7.



## Hamburg Roadway Designs

Hamburg Place, LLC | Lexington, KY

HDR has been the lead design firm for infrastructure improvements for the 1800-acre Hamburg Place Development. Roadway design has been the major component of the infrastructure. Collaborating with LFUCG, Madden LLC, and KYTC, HDR has successfully designed the following core network of streets:

- Sir Barton Way
- Star Shoot Parkway
- Polo Club Boulevard
- Pink Pigeon Parkway
- Vendor Way
- Alysheba Way

Additionally, HDR has designed several residential streets as part of the West Wind and Shetlands Subdivisions. These roadway designs were all completed under the review of LFUCG and were designed with the vision of connecting different segments of the developments back to the residential developments. This connectivity has been the backbone of success for the Hamburg Place Development and demonstrates HDR's understanding of the sensitivity in connecting major arterials down to the smallest of residential streets.



## Liberty/Todds Road

LFUCG | Lexington, KY

Liberty/Todds Road, an arterial highway, is a strategic part of the Lexington Area Metropolitan Planning Organization Transportation Plan. The project corridor extends from east of I-75 to New Circle Road and is divided into three sections:

HDR prepared preliminary plans, complete with an environmental documentation (Phase I Design) for the entire corridor, and Final Design for Section I (South of Andover Forest to Graftons Mill Lane).

Varying typical sections and design improvements to limit impacts to the existing corridor made this a complex urban design with curb and gutter, fluctuating from a four-lane grass median divided roadway to a three-lane section. All typicals incorporate a bike lane and sidewalks. Many public meetings and neighborhood participation created a positive public response and provided a context-sensitive design that had public approval. Various issues included:

- Minimizing impact to existing residential and commercial properties.
- Minimizing the typical section through the residential to a three-lane section.
- Adding of bike lanes to promote bikeway connectivity between "Rails to Trails," LFUCG Public Park, and the Expansion Area Boulevard.



## New Circle Road Widening

KYTC District 7 | Lexington, KY

Preliminary and final design for widening on New Circle Road from Versailles Rd. to Georgetown Rd. Work began by evaluating the capacity and assessing deficiencies on New Circle and the interchanges at Leestown and Old Frankfort Pike. Final design included adding an additional lane in each direction on New Circle along with the reconstruction of two interchanges, the replacement of six bridges, and extension of two box culverts.

HDR led the project team in a week long workshop to determine proper interchange types. Using design year traffic projections the team utilized VISSIM to analyze the operations for the proposed Leestown Road Double Crossover Diamond (DCD) and used Synchro for other interchanges. Ultimately the team selected a standard Diamond configuration for Old Frankfort Pike and a DCD for Leestown – only the second interchange of this type to be built in Kentucky.

During design development close coordination with numerous public and private stakeholders including local agencies, utility companies, multiple railroads, local businesses and property owners was maintained. Public outreach also included the development of a project website. Construction of Phase I from Versailles Road to Leestown Road started in the fall of 2014 and was complete fall of 2016.

Final Design for the Phase II from Leestown Road to Georgetown Pike is still in progress.



## WEG Planning & Design

KYTC District 7 | Lexington, KY

HDR (as prime) provided transportation planning and design services for the 2010 World Equestrian Games (WEG) at the Kentucky Horse Park. The HDR led team was selected in 2007 to provide a full range of services that included traffic modeling, preliminary and final roadway design, agency coordination, GIS, public meetings, utility relocations, stream permitting, and traffic management.

In preparation for the event, the Kentucky Horse Park underwent major expansions, including new stadiums and arenas, to accommodate an estimated attendance of 600,000 spectators with a peak day attendance of approximately 100,000 for this cross country event. HDR successfully coordinated with KYTC District 7 staff to deliver 11 letter agreements ranging from initial traffic models to final design of roadway improvements for Iron Works Pike, I-75 Interchange, and internal park roadways. Final roadway improvements plans were delivered to KYTC and FAC for March/April lettings. The plans and permits were delivered on an aggressive schedule since the planning was constantly evolving for the event.

Other letter agreements included preparation of an Interchange Modification Report, permitting, and extensive coordination with a multitude of federal, state, and local agencies, including WEG officials, the Kentucky Horse Park, LFUCG, and FHWA.



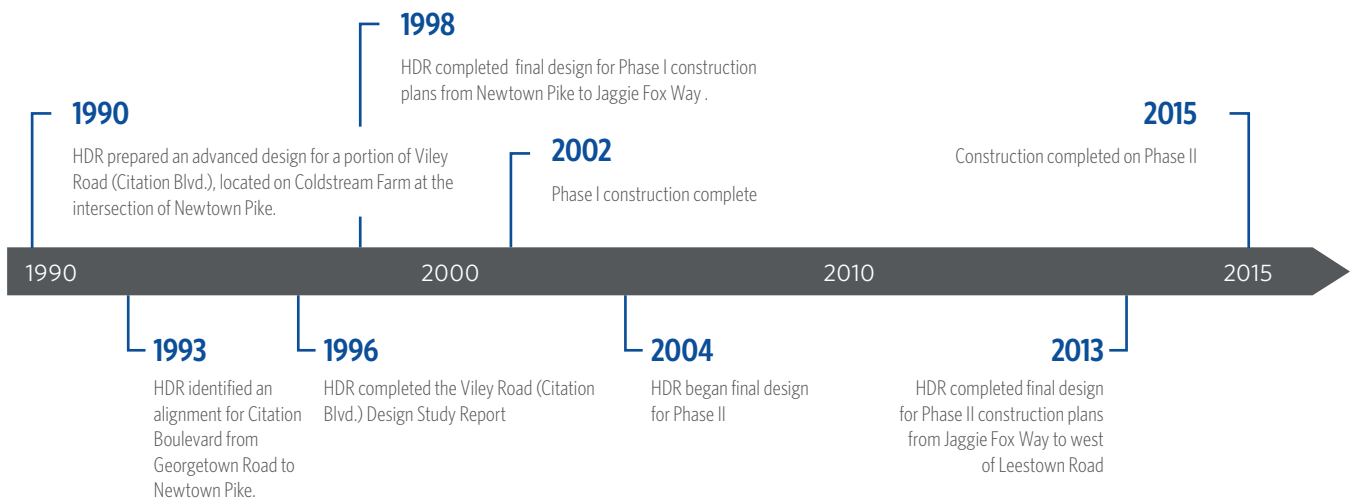


## 04 Project Familiarity & Approach





# 04 Project Familiarity & Approach



## Project History/ Understanding

HDR looks forward to the opportunity to continue our 27 year history of planning and designing the Citation Boulevard Corridor. We began working with LFUCG on Citation Boulevard in 1990. Subsequently HDR successfully completed the following for LFUCG:

- In 1990 LFUCG requested that HDR prepared an **advanced design for a portion of Viley Road (Citation Boulevard), located on Coldstream Farm at the intersection of Newtown Pike**, adjacent to a proposed Hughes Plant across from Marriott Resort.
- In 1993 LFUCG requested that HDR **identify an alignment for Citation Boulevard from Georgetown Road to Newtown Pike**. Subsequently a series of review meetings were held with LFUCG to show alternatives alignments that were studied.

The meetings included review of alternatives for Coldstream Farm and accommodation for a sanitary sewer force main.

- In 1994 HDR was granted a Notice to Proceed with the **Viley Road (Citation Boulevard) Design Study Report**. During the process of developing the study, HDR and LFUCG visited Williamsburg, Virginia and Washington, D.C. to review park roads for implementation into the design. A preferred alignment was identified and was presented to the public at a Public Hearing in 1995 and the Viley Road Design Study Report was subsequently completed in 1996.
- HDR was contracted by LFUCG to complete **preliminary design for Citation Boulevard from Russell Cave Road to west of Leestown Road**, including an Environmental Assessment of the entire corridor.
- Upon approval of preliminary design, HDR was commissioned to **complete final design for**

- **Phase I construction plans from Newtown Pike to Jaggie Fox Way in 1998**. Final construction plans were completed in 2000, with construction completed in 2002.
- HDR was contracted by LFUCG to prepare **final design for Phase II construction plans from Jaggie Fox Way to west of Leestown Road** in 2004. After several funding delays, construction was completed in 2015.

As demonstrated by this timeline, HDR has been continuously working on the Citation Boulevard corridor since 1990. The same people who started this history are still leading our team. We have previously completed a design study report for the Proposed Citation Extension and look forward to completing this last section of design. No other consultant offers you the consistency, history, expertise, or positive results on this corridor.

Our Lexington office will lead design efforts for this project. Many of



our staff assigned to the project, as shown on our organizational chart, are Lexington based employees and have been working on this corridor since 1990. Through our involvement in earlier phases, we have a detailed understanding of the project and project corridor and are confident that our history with this project will translate into efficiencies as the project progresses through design.

The purpose of the project is to provide improved access for the Winburn and Russell Cave area to services and economic opportunities. Neighborhoods in the Winburn and Russell Cave area have a lack of connectivity which has created public safety and accessibility problems. The area is comprised of a mix of single family and apartment complexes, and due to the socio-economic character of the area, many residents do not own a vehicle and depend on public or other modes of transportation. This extension project will provide opportunities for other modes of transportation to connect more easily, including potential for increased bus routes. The extension will also bring connectivity for pedestrians and

bicyclists to the Legacy Trail at the intersection of Citation and Newtown Pike. These improved connections can bring positive change to the neighborhoods it will serve.

## Project Approach

While we have a lengthy history with this project, we recognize that considerable time has passed since preparation of the Design Study Report, and consequently, are aware of changes within the project corridor. Our approach will include planning for the following:

- Recognize that diverse parties have interest in this project. The Winburn Russell Cave neighborhoods adopted a small area plan in 2015 that spotlights a desire for better connectivity for vehicular traffic and pedestrians for the area. Newer development along the Citation Extension from Newtown Pike includes residential and a retirement community. We have met with individuals of these groups and each expressed interest in being involved in the design discussions. The Griffin Gate development will also be an important community to work

with. Previous commitments to stakeholders with the project will be reviewed with LFCUG to ensure our design addresses those appropriately.

- Develop typical sections for Citation, Winburn, and Albany. Each segment has differing characteristics and will require appropriate details.

## Public Engagement & Stakeholder Coordination

The importance of public engagement cannot be stressed enough in projects such as Citation Boulevard Phase III-A. The continued development along the Citation Boulevard corridor and in the Russell Cave and Winburn area all create a demand for consideration for various multimodal facilities – this means we need to engage not only the driving public but also pedestrian, bicycle and other users. The project will involve diverse stakeholders and interested parties that will have differing visions of the project goals. An experienced leader for public involvement will be essential to ensure this project's success. HDR has designated Ben



Edelen to lead the public involvement and stakeholder coordination for this project and he will be assisted by Shawn Dikes led the transportation components of the Winburn Russell Cave Small Area Plan. Ben has extensive experience in public involvement in numerous high profile projects right here in Lexington including Liberty Road, New Circle Road, Harrodsburg Road, and previously on Citation Boulevard. In fact, this prior experience on Citation public involvement sets HDR apart from any other team. Joe Cochran will be integral in maintaining constant communication with the project team and assisting in coordination efforts. Through various communication tools that included email, newsletters, and meetings our team will be able to share project information and provide opportunities for public input.

### **Community Engagement**

Engaging local stakeholders, including residents near Citation Boulevard, understanding their needs in relation to costs, access, and the need to accommodate traffic will be critical. One way to facilitate

a dialogue to accomplish this is through a collaborative workshop where participants can learn about the extension and be given a chance to detail their concerns and articulate what design elements or treatments along the roadway are important to them. Through a “build your own roadway” exercise (similar to what was done for the Winburn Russell Cave Small Area Plan), residents can complete their ultimate cross section for the Citation Boulevard Extension by arranging a variety of roadway design elements; including one, two, or more lanes, two-way left turn lanes, sidewalks, multimodal trails, lighting, landscaping, etc., to develop their “ideal” cross section. This exercise allows the residents to visually express what elements are important to them. We can then compared these elements to the cross section articulated in the Winburn Russell Cave Small Area Plan. For those that can’t participate in person, a survey can be placed online to gather additional feedback.

Additionally, residents can draw an alignment on a map to show where the extension would go. This detail could help engineers and

designers develop an extension that is more or less straight, or one that is more curvilinear, fitting a preferred alignment into the existing environment and minimizing impacts to established neighborhoods, parks, the Griffin Gate Golf Course, adjacent open spaces, and UK’s Ecological Research and Education Center (EREC) Center.

### **Alignment & Grade**

During our previous design study report activities we set an alignment that generally paralleled the Griffin Gate property through the extents of Phase III-A. A 60-foot dedicated right-of-way was provided along the south and east property lines to accommodate the new roadways. Intersections with Citation to Asbury Lane and Winburn Drive will be included. Citation Boulevard was extended from Newtown Pike to Silver Springs Drive with the development of the residential and retirement home properties. The typical section for Citation included curb and gutter on both sides of the roadway from Newtown Pike to Newtown Springs Drive. From Newtown Springs to Silver Springs, curb and gutter was included on the south edge of road only, with the north edge having an earth shoulder and with the road tapering down to a narrower two-lane width. The proposed project will widen the north edge of the existing road and add curb and gutter, and will extend the full width of the road to the proposed Winburn intersection.

There appears to be adequate right-of-way to allow for the Citation extension while not impacting properties. The 60-foot dedicated right-of-way along Griffin Gate appears to provide the needed area to extend the road and to continue an earth berm that was included with the initial extension. The berm was constructed with the previous project as a commitment to the Griffin Gate community. The extension of Winburn to Citation will parallel





the east property line of Griffin Gate, and also includes a 60-foot dedicated right-of-way. According to PVA information existing golf cart paths appear to encroach onto the dedicated right-of-way on the east side. This will be verified with property research and establishing accurate property boundaries early in the preliminary design process. The terrain along the proposed Winburn corridor is rolling and includes an existing drainage channel which carries runoff from the east onto the Griffin Gate property. Connection to the existing Winburn Drive will happen in front of Winburn Middle School and the school's southern entrance.

## Right-of-Way & Easements

While our design will seek to minimize any impacts to properties, acquisition of right-of-way and easements may be needed. Leigh Karr will lead the property acquisition process for HDR under the direction of LFUCG. Leigh has extensive experience with right-of-way acquisitions both as an LFUCG employee and as a consultant. Right-of-way projects require understanding of LFUCG, KYTC, FHWA requirements and the Uniform Act procedures and standards based on funding, client and other factors. Our team has a thorough understanding of these regulations through a long history of successful delivery of projects within their timeframe. HDR's approach to success for right-of-way projects includes a depth of experience, local resources and a full suite of right-of-way services. Serving as a common thread throughout the development and construction of a project, HDR's Real Estate Services (RES) team will participate as a trusted partner in coordinating landowner outreach, communications, and negotiations for land rights. HDR has the staff and experience that can move the right-of-way phase to rapid completion.

## Utility Coordination

Underground utilities along Citation include water, electric, communications, gas and sanitary sewer. In our previous work on Phases I and II, we maintained communication with utility owners throughout the project to identify existing facilities, minimize impacts, and assist in the planning of relocations. HDR assisted the utility relocation designers in identifying potential areas for relocations and made accommodation with our design for others. We understand that Phase III-A has many of the same utility elements as the previous phases. Rich Smith, who will lead our utility coordination efforts, designed sewer relocations for the final design of Citation Boulevard Phase II. He has worked with both LFUCG on sanitary sewer projects and Kentucky American Water (KAW) on water line projects, including systems within the Citation Boulevard corridor. KAW has existing facilities near the project area including a 12-inch ductile iron water main at the end of Winburn Drive, a 12-inch water main at the end of Citation Boulevard, and an 8-inch main at the end of Asbury Lane. Existing water and sanitary sewer lines appear to be outside of the probable footprint for the new road and are not likely to require relocations. Rich will lead HDR's effort to confirm the location of all existing utility facilities, coordinate with utilities on plans for the area, and incorporate utility work into the design where appropriate. This includes relocation of facilities if necessary for a successful project.

## Mobility Planning

According to the Winburn Russell Cave Small Area Plan, "Citation Boulevard is both the most logical and problematic roadway to pull through the study area." It represents the best opportunity to link the neighborhoods on each side of the proposed extension; Winburn and Green Acres, with Newtown

## This HDR Team offers You:

- 1 Unparalleled history with the project.** HDR has been working on this project since 1990 and has previously completed a design study report for this section of Citation.
- 2 Continuity of leadership.** HDR's project manager and highway design lead from previous phases will continue working on this project.
- 3 Broad-based services provided by local office.** HDR will lead all required services from its Lexington office using almost entirely Lexington-based staff.
- 4 Professional and personal desire to see this Phase III-A project completed.** Local staff who have been involved with this project since inception!



Pike, I-64 and recreational spaces of Shadybrook Park and the Legacy Trail to the west, and it should be done so in a fashion to accommodate all modes as practically and as safely as possible. Shawn Dikes lead the Winburn Russell Cave Small Area Plan development team and will work with the design team to ensure subtle design features are included to meet the intent of the Small Area Plan.

As we planned in the original Design Study Report, Citation Boulevard changes character considerably after it crosses Newtown Pike to the east and comes into the existing subdivision currently stopping at Silver Spring Drive. It tapers from four lanes to two lanes, and generally takes on the characteristics of a neighborhood street rather than an arterial. Taking the roadway from its current termini at Silver Spring Drive to Winburn Drive could be Phase I (as identified in the Small Area Plan – as the right-of-way is already identified), and from Winburn to Russel Cave Road could be Phase II according to the Plan.

Care must be taken to accommodate the appropriate volume of traffic with a commensurate number of travel lanes and to prevent the roadway from becoming an opportunity for a “speed zone” as was one of the issues identified during the Small Area Plan development. Designers should take what the residents articulated in the plan to heart, a desire to accommodate traffic, cyclists and pedestrians in a safe and similar manner as expressed in the cross section shown above. The actual alignment will also be important as it should work in harmony with any proposed residential development on either side of the extension, and with UK's EREC since it logically could go through or around the perimeter of that facility.

The roadway can serve to connect the residents to many community facilities as well, including the North Side Library, the Winburn Middle School and the Martin Luther King (Winburn) Park. It could also serve to connect to Lextran Routes 4 Newtown Pike and Route 6 Broadway which runs on Russell Cave Road and directly serves the Winburn neighborhood.





# **A** Local Workforce Analysis





# A Local Workforce Analysis

The local staff of HDR has enjoyed a 40-year relationship with LFUCG. HDR has over 170 coworkers assigned to our local offices, including more than 50 professionals in our Lexington office, located on Sir Barton Way. It is anticipated that the work associated with this project will be coordinated in HDR's Lexington office. The following information is presented within this section:

- Workforce Analysis Form
- Equal Opportunity Agreement
- Affirmative Action Program

HDR's full Equal Opportunity and Affirmative Action Program is available upon request. The total program is over 150 pages and is available in hard copy or as a PDF.

## Workforce Analysis Form

Name of Organization: HDR Engineering, Inc./KY Area

Date: 10/16/2017

Categories	Total	White		Latino		Black		Other		Total	
		M	F	M	F	M	F	M	F	M	F
Administrators & Managers	31	29	2							29	2
Professionals	96	75	20				1			75	21
Superintendents											
Supervisors											
Foremen											
Technicians	39	32	6			1				33	6
Protective Service											
Para-Professionals											
Office/Clerical	7		6				1				7
Skilled Craft											
Service/Maintenance											
<b>Total:</b>	<b>173</b>	<b>136</b>	<b>34</b>			<b>1</b>	<b>2</b>			<b>137</b>	<b>36</b>

Prepared By:

Patty Van Vooren, Kentucky Diversity Officer

Name & Title

## EQUAL OPPORTUNITY AGREEMENT

### Standard Title VI Assurance

The Lexington Fayette-Urban County Government, (hereinafter referred to as the "Recipient") hereby agrees that as a condition to receiving any Federal financial assistance from the U.S. Department of Transportation, it will comply with Title VI of the Civil Rights Act of 1964, 78Stat.252, 42 U.S.C. 2000d-4 (hereinafter referred to as the "Act"), and all requirements imposed by or pursuant to Title 49, Code of Federal Regulations, U.S. Department of Transportation, Subtitle A, Office of the Secretary, (49 CFR, Part 21) Nondiscrimination in Federally Assisted Program of the Department of Transportation – Effectuation of Title VI of the Civil Rights Act of 1964 (hereinafter referred to as the "Regulations") and other pertinent directives, no person in the United States shall, on the grounds of race, color, national origin, sex, age (over 40), religion, sexual orientation, gender identity, veteran status, or disability be excluded from participation in, be denied the benefits of, or be otherwise subjected to discrimination under any program or activity for which the Recipient receives Federal financial assistance from the U.S. Department of Transportation, including the Federal Highway Administration, and hereby gives assurance that will promptly take any necessary measures to effectuate this agreement. This assurance is required by subsection 21.7(a) (1) of the Regulations.

### The Law

- Title VII of the Civil Rights Act of 1964 (amended 1972) states that it is unlawful for an employer to discriminate in employment because of race, color, religion, sex, age (40-70 years) or national origin.
- Executive Order No. 11246 on Nondiscrimination under Federal contract prohibits employment discrimination by contractor and sub-contractor doing business with the Federal Government or recipients of Federal funds. This order was later amended by Executive Order No. 11375 to prohibit discrimination on the basis of sex.
- Section 503 of the Rehabilitation Act of 1973 states:

*The Contractor will not discriminate against any employee or applicant for employment because of physical or mental handicap.*

- Section 2012 of the Vietnam Era Veterans Readjustment Act of 1973 requires Affirmative Action on behalf of disabled veterans and veterans of the Vietnam Era by contractors having Federal contracts.
- Section 206(A) of Executive Order 12086, Consolidation of Contract Compliance Functions for Equal Employment Opportunity, states:

*The Secretary of Labor may investigate the employment practices of any Government contractor or sub-contractor to determine whether or not the contractual provisions specified in Section 202 of this order have been violated.*

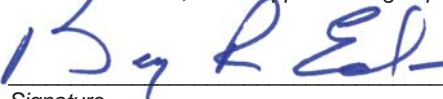
\*\*\*\*\*

The Lexington-Fayette Urban County Government practices Equal Opportunity in recruiting, hiring and promoting. It is the Government's intent to affirmatively provide employment opportunities for those individuals who have previously not been allowed to enter into the mainstream of society. Because of its importance to the local Government, this policy carries the full endorsement of the Mayor, Commissioners, Directors and all supervisory personnel. In following this commitment to Equal Employment Opportunity and because the Government is the benefactor of the Federal funds, it is both against the Urban County Government policy and illegal for the Government to let contracts to companies which knowingly or unknowingly practice discrimination in their employment practices. Violation of the above mentioned ordinances may cause a contract to be canceled and the contractors may be declared ineligible for future consideration.

Please sign this statement in the appropriate space acknowledging that you have read and understand the provisions contained herein. Return this document as part of your application packet.

### Bidders

*I/We agree to comply with the Civil Rights Laws listed above that govern employment rights of minorities, women, Vietnam veterans, handicapped and aged persons.*



Signature

**HDR Engineering, Inc.**

Name of Business



## Equal Employment Opportunity Policy Statement

HDR, Inc. and its subsidiaries, hereinafter referred to as HDR, have been and will continue to be equal opportunity employers. We are dedicated to maintaining a work environment which extends equal opportunity for employment and employment-related benefits to all individuals. HDR will recruit, hire, compensate, upgrade, train and promote employees in all job classifications and will insure that all personnel actions such as compensation, benefits, layoffs, return from layoffs, transfers, company sponsored training, education, tuition assistance, social and recreation programs and other terms, conditions and privileges of employment are administered without regard to ancestry, race, color, sex, sexual orientation, genetic information, religion, national origin, age, creed, veteran, citizenship status, marital status, public assistance, disability status, gender identity, transgender status, Vietnam Era Veteran, recently separated, special disabled, and other protected veterans or any other basis prohibited by law, except where these are essential bona fide occupational qualifications. Compensation for services will not be reduced because of any disability income, pension or other benefits the applicant or employee receives from another source. Towards this objective, HDR has adopted affirmative action programs to assure equal opportunity and compliance with Federal, and local legislation.

Physical and/or mental job qualifications are applied in the selection of employees for hire, promotion and transfer only if they are directly job-related and consistent with business necessity and the performance of the job. Any information obtained relating to a person's physical or mental condition shall be kept confidential except to extent that supervisors and managers may be informed of work limitations or reasonable accommodations necessary, first aid and safety personnel may be informed if emergency precautions or treatment might be necessary and information may be released to Government officials investigating compliance.

Employees are requested to complete a voluntary disclosure form to assist HDR in identifying reasonable accommodations, which could enable more effective and safe performance. Reasonable accommodations such as special equipment, job restructure, modified work schedule or other accommodations will be made to the physical and mental abilities of employees and applicants, provided the accommodation does not impose an "undue hardship" on the company.

HDR will not subject employees and applicants to harassment, intimidation, threats, coercion or retaliation because they engaged or may engage in filing a complaint or assisted in a review, investigation or hearing related to any federal, state or local law requiring equal employment opportunities for individuals with disabilities or protected veterans; or because they opposed any act deemed unlawful by any of the above referenced laws; or because they exercised any other right under Section 503 or Section 4212.

HDR strongly disapproves of any form of discrimination or harassment of individuals placed through this policy, and furthermore, seeks to make employees at all levels sensitive to the issue and inform them of their equal employment rights.

Concerns or suggestions regarding HDR's Equal Employment Opportunity Policies and their application should be directed to your supervisor, your Department Manager or Regional Director, or Judith Webster, Senior Vice President of Human Resources and Corporate EEO Officer (HDR, Inc., 8404 Indian Hills Dr., Omaha, NE 68114, 402/399-1000). All allegations of harassment or discrimination will be investigated in as confidential a manner as possible and corrective action, including discipline or discharge, taken where appropriate. Retaliation against employees filing a complaint is strictly prohibited, as are false charges of discrimination or harassment.

All employees are encouraged to take an active role in promoting our affirmative action efforts. The Affirmative Action Program is available for your inspection during regular business hours by appointment with your Department Manager or Managing Principal.

George A. Little P.E.  
Chairman and CEO

August 20, 2014

[Connecticut Equal Employment Opportunity Policy](#)  
[Minnesota Equal Employment Opportunity Policy](#)  
[New Jersey Equal Employment Opportunity Policy](#)  
[California and Washington Equal Employment Opportunity Policy](#)  
[San Francisco, CA Equal Employment Opportunity Policy](#)



# HDR Engineering, Inc.

## Affirmative Action Plan

As supported in our policy statement and Affirmative Action Plan, HDR is dedicated to maintaining and improving a work environment that extends equal opportunity to all individuals. HDR policy encourages recruitment and appointment to the work force of qualified minority and female candidates.

The employment/recruitment process is supervised by a corporate Human Resources staff to ensure compliance with Affirmative Action. Our workforce is predominantly professional/technical, representing 83 percent of our total staff. Because availabilities in these fields are low, women and minorities are given every consideration.

All advertising encourages affirmative action, with most advertising placed in large metropolitan or technical publications. Where appropriate, positions are also advertised in minority and female publications. Job service and other employment referral agencies are used. Each position description is reviewed to ensure that it is not discriminatory in any way.

Utilization is reviewed at least quarterly, at the corporate level. This review is forwarded to all levels of management. Rather than detail procedures required in the Affirmative Action Plan, we have listed below those that are particularly helpful or effective. If required, we can furnish you with the entire plan.

**Employee Referral Program** - Cash bonuses are paid to employees who refer qualified candidates who are subsequently hired. This provides an effective tool in the recruitment of minority and female employees.

**Tuition Reimbursement** - Employees are encouraged to further their education to allow for promotions. HDR assists in this process by reimbursing tuition costs.

**Job Posting** - All vacancies are posted, the majority nationally. Through the postings, employees are provided an opportunity for advancement and are able to refer candidates from the outside to apply for those positions.

**Performance Appraisal and Development Program** - A formalized performance appraisal system helps ensure fairness in evaluating employees for promotions and salary increases.

Through this corporate wide effort, we are progressing in our affirmative action goals. Our California staff has increased its percentage of female professional staff since 1988. HDR intends to recognize the worth of each individual based solely upon his or her performance, qualifications, and contribution to the success of the company

**HDR Engineering, Inc**



## **B** Affidavit





7. Proposer acknowledges that "knowingly" for purposes of this Affidavit means, with respect to conduct or to circumstances described by a statute or ordinance defining an offense, that a person is aware or should have been aware that his conduct is of that nature or that the circumstance exists.

Further, Affiant sayeth naught.

*Ben R. Edelen*

STATE OF Kentucky

COUNTY OF Fayette

The foregoing instrument was subscribed, sworn to and acknowledged before me

by Ben R. Edelen on this the 16th day

of October, 2017.

My Commission expires: 10/21/2020

*Robyn Cheatham*

NOTARY PUBLIC, STATE AT LARGE





# C M/WBE Participation Form



**LFUCG MWDBE PARTICIPATION FORM**

Bid/RFQ/Quote Reference # RFQ #40-2017

The MWDBE and/or veteran subcontractors listed have agreed to participate on this Bid/RFQ/Quote. If any substitution is made or the total value of the work is changed prior to or after the job is in progress, it is understood that those substitutions must be submitted to Central Purchasing for approval immediately. **Failure to submit a completed form may cause rejection of the bid.**

MWDBE Company, Name, Address, Phone, Email	MBE WBE or DBE	Work to be Performed	Total Dollar Value of the Work	% Value of Total Contract
1. <b>Vision Engineering, LLC</b> 3399 Tates Creek Rd Lexington, KY 40502 (p) 859.559-0516	DBE	Drainage & Stormwater	TBD	> 10%
2. <b>Salt River Engineering, PLLC</b> 108 West Poplar Harrodsburg, KY 40330 (p) 859.321.1911	Veteran	Utility Coordination	TBD	> 3%
3.				
4.				

The undersigned company representative submits the above list of MWDBE firms to be used in accomplishing the work contained in this Bid/RFQ/Quote. Any misrepresentation may result in the termination of the contract and/or be subject to applicable Federal and State laws concerning false statements and false claims.

**HDR Engineering, Inc.**

Company

**10/16/2017**

Date

Company Representative

**Sr. Vice President / Area Manager**

Title





## D General Provisions

## GENERAL PROVISIONS

1. Each Respondent shall comply with all Federal, State & Local regulations concerning this type of service or good.

The Respondent agrees to comply with all statutes, rules, and regulations governing safe and healthful working conditions, including the Occupational Health and Safety Act of 1970, *29 U.S.C. 650 et. seq.*, as amended, and KRS Chapter 338. The Respondent also agrees to notify the LFUCG in writing immediately upon detection of any unsafe and/or unhealthful working conditions at the job site. The Respondent agrees to indemnify, defend and hold the LFUCG harmless from all penalties, fines or other expenses arising out of the alleged violation of said laws.

2. Failure to submit ALL forms and information required in this RFP may be grounds for disqualification.
3. Addenda: All addenda and IonWave Q&A, if any, shall be considered in making the proposal, and such addenda shall be made a part of this RFP. Before submitting a proposal, it is incumbent upon each proposer to be informed as to whether any addenda have been issued, and the failure to cover in the bid any such addenda may result in disqualification of that proposal.
4. Proposal Reservations: LFUCG reserves the right to reject any or all proposals, to award in whole or part, and to waive minor immaterial defects in proposals. LFUCG may consider any alternative proposal that meets its basic needs.
5. Liability: LFUCG is not responsible for any cost incurred by a Respondent in the preparation of proposals.
6. Changes/Alterations: Respondent may change or withdraw a proposal at any time prior to the opening; however, no oral modifications will be allowed. Only letters, or other formal written requests for modifications or corrections of a previously submitted proposal which is addressed in the same manner as the proposal, and received by LFUCG prior to the scheduled closing time for receipt of proposals, will be accepted. The proposal, when opened, will then be corrected in accordance with such written request(s), provided that the written request is contained in a sealed envelope which is plainly marked "modifications of proposal".
7. Clarification of Submittal: LFUCG reserves the right to obtain clarification of any point in a bid or to obtain additional information from a Respondent.
8. Bribery Clause: By his/her signature on the bid, Respondent certifies that no employee of his/hers, any affiliate or Subcontractor, has bribed or attempted to

bribe an officer or employee of the LFUCG.

9. Additional Information: While not necessary, the Respondent may include any product brochures, software documentation, sample reports, or other documentation that may assist LFUCG in better understanding and evaluating the Respondent's response. Additional documentation shall not serve as a substitute for other documentation which is required by this RFP to be submitted with the proposal,
10. Ambiguity, Conflict or other Errors in RFP: If a Respondent discovers any ambiguity, conflict, discrepancy, omission or other error in the RFP, it shall immediately notify LFUCG of such error in writing and request modification or clarification of the document if allowable by the LFUCG.
11. Agreement to Bid Terms: In submitting this proposal, the Respondent agrees that it has carefully examined the specifications and all provisions relating to the work to be done attached hereto and made part of this proposal. By acceptance of a Contract under this RFP, proposer states that it understands the meaning, intent and requirements of the RFP and agrees to the same. The successful Respondent shall warrant that it is familiar with and understands all provisions herein and shall warrant that it can comply with them. No additional compensation to Respondent shall be authorized for services or expenses reasonably covered under these provisions that the proposer omits from its Proposal.
12. Cancellation: If the services to be performed hereunder by the Respondent are not performed in an acceptable manner to the LFUCG, the LFUCG may cancel this contract for cause by providing written notice to the proposer, giving at least thirty (30) days notice of the proposed cancellation and the reasons for same. During that time period, the proposer may seek to bring the performance of services hereunder to a level that is acceptable to the LFUCG, and the LFUCG may rescind the cancellation if such action is in its best interest.

#### A. Termination for Cause

- (1) LFUCG may terminate a contract because of the contractor's failure to perform its contractual duties
- (2) If a contractor is determined to be in default, LFUCG shall notify the contractor of the determination in writing, and may include a specified date by which the contractor shall cure the identified deficiencies. LFUCG may proceed with termination if the contractor fails to cure the deficiencies within the specified time.
- (3) A default in performance by a contractor for which a contract may be terminated shall include, but shall not necessarily be limited to:



- (a) Failure to perform the contract according to its terms, conditions and specifications;
- (b) Failure to make delivery within the time specified or according to a delivery schedule fixed by the contract;
- (c) Late payment or nonpayment of bills for labor, materials, supplies, or equipment furnished in connection with a contract for construction services as evidenced by mechanics' liens filed pursuant to the provisions of KRS Chapter 376, or letters of indebtedness received from creditors by the purchasing agency;
- (d) Failure to diligently advance the work under a contract for construction services;
- (e) The filing of a bankruptcy petition by or against the contractor; or
- (f) Actions that endanger the health, safety or welfare of the LFUCG or its citizens.

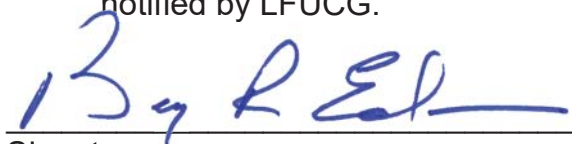
#### B. At Will Termination

Notwithstanding the above provisions, the LFUCG may terminate this contract at will in accordance with the law upon providing thirty (30) days written notice of that intent, Payment for services or goods received prior to termination shall be made by the LFUCG provided these goods or services were provided in a manner acceptable to the LFUCG. Payment for those goods and services shall not be unreasonably withheld.

- 13. **Assignment of Contract:** The contractor shall not assign or subcontract any portion of the Contract without the express written consent of LFUCG. Any purported assignment or subcontract in violation hereof shall be void. It is expressly acknowledged that LFUCG shall never be required or obligated to consent to any request for assignment or subcontract; and further that such refusal to consent can be for any or no reason, fully within the sole discretion of LFUCG.
- 14. **No Waiver:** No failure or delay by LFUCG in exercising any right, remedy, power or privilege hereunder, nor any single or partial exercise thereof, nor the exercise of any other right, remedy, power or privilege shall operate as a waiver hereof or thereof. No failure or delay by LFUCG in exercising any right, remedy, power or privilege under or in respect of this Contract shall affect the rights, remedies, powers or privileges of LFUCG hereunder or shall operate as a waiver thereof.
- 15. **Authority to do Business:** The Respondent must be a duly organized and authorized to do business under the laws of Kentucky. Respondent must be in good standing and have full legal capacity to provide the services specified under this Contract. The Respondent must have all necessary right and lawful authority to enter into this Contract for the full term hereof and that proper corporate or

other action has been duly taken authorizing the Respondent to enter into this Contract. The Respondent will provide LFUCG with a copy of a corporate resolution authorizing this action and a letter from an attorney confirming that the proposer is authorized to do business in the State of Kentucky if requested. All proposals must be signed by a duly authorized officer, agent or employee of the Respondent.

16. **Governing Law:** This Contract shall be governed by and construed in accordance with the laws of the Commonwealth of Kentucky. In the event of any proceedings regarding this Contract, the Parties agree that the venue shall be the Fayette County Circuit Court or the U.S. District Court for the Eastern District of Kentucky, Lexington Division. All parties expressly consent to personal jurisdiction and venue in such Court for the limited and sole purpose of proceedings relating to this Contract or any rights or obligations arising thereunder. Service of process may be accomplished by following the procedures prescribed by law.
17. **Ability to Meet Obligations:** Respondent affirmatively states that there are no actions, suits or proceedings of any kind pending against Respondent or, to the knowledge of the Respondent, threatened against the Respondent before or by any court, governmental body or agency or other tribunal or authority which would, if adversely determined, have a materially adverse effect on the authority or ability of Respondent to perform its obligations under this Contract, or which question the legality, validity or enforceability hereof or thereof.
18. Contractor understands and agrees that its employees, agents, or subcontractors are not employees of LFUCG for any purpose whatsoever. Contractor is an independent contractor at all times during the performance of the services specified.
19. If any term or provision of this Contract shall be found to be illegal or unenforceable, the remainder of the contract shall remain in full force and such term or provision shall be deemed stricken.
20. Contractor [or Vendor or Vendor's Employees] will not appropriate or make use of the Lexington-Fayette Urban County Government (LFUCG) name or any of its trade or service marks or property (including but not limited to any logo or seal), in any promotion, endorsement, advertisement, testimonial or similar use without the prior written consent of the government. If such consent is granted LFUCG reserves the unilateral right, in its sole discretion, to immediately terminate and revoke such use for any reason whatsoever. Contractor agrees that it shall cease and desist from any unauthorized use immediately upon being notified by LFUCG.



Signature

10/16/2017

Date



2517 Sir Barton Way  
Lexington, KY 40509  
859.629.4800

**hdrinc.com**

We practice increased use of sustainable materials and reduction of material use.

© 2017 HDR, Inc., all rights reserved.

