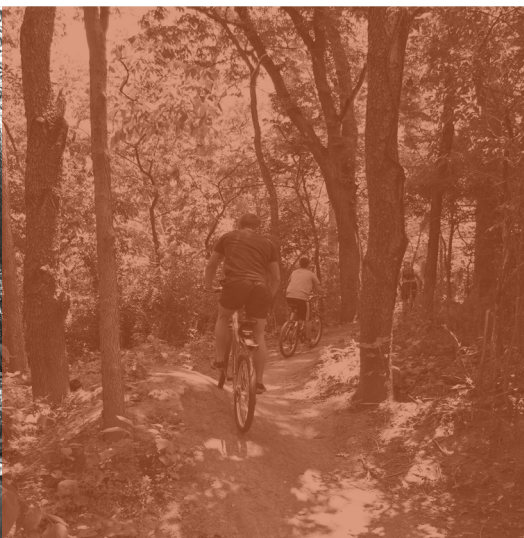


Lexington-Fayette Urban County Government Request for Qualifications

Professional Engineering Services

March 26, 2014



March 26, 2014

Theresa Maynard – Buyer Senior
Lexington-Fayette Urban County Government
Room 338, Government Center
200 East Main Street
Lexington, KY 40507

RE: Letter of Transmittal for RFP #13-2014 Request for Qualifications for Professional Engineering Services

Dear Ms. Maynard,

CDP Engineers (CDP), in association with our DBE sub-consultant Abbie Jones Consulting, would like to thank you for reviewing our Statement of Qualifications to provide the Lexington–Fayette Urban County Government (LFUCG) with Professional Engineering Services. This submittal contains information to be considered for *Contract 1–Roadway corridor and intersection design/planning and Contract 5–Pedestrian, bike, or multi-modal trail design/planning.*

With our corporate office established in Lexington in 1989, CDP is in its 25th year of business. As an award-winning design firm, CDP provides Civil, Environmental, and Transportation Engineering; Landscape Architecture & Planning; and Land Surveying & GIS services to a range of public and private entities including; governmental agencies, public institutions, municipalities, and commercial establishments. Our firm’s capabilities have been constantly enhanced and diversified to better serve client needs. CDP has been committed to service excellence and staying at the forefront of current technology. We take pride in our track record of providing high quality services and innovative design solutions for our clients.

CDP’s Transportation Group has built a reputation for design excellence for a number of years. Our recent Project Evaluation Scores from the Kentucky Transportation Cabinet attest to our reputation: Berea Bypass D-7 (98), US 60 D-9 (98.33), KY 205 D-10 (93), Menelaus Road D-7 (98) and Clays Mill Road D-7 (91). Transportation projects from the design of a turn lane to the design of a 7-mile bypass receive the same level of professional attention and design consideration. Our Transportation Group works to integrate a community’s current transportation needs balanced with contemplation for future demands. *Of particular note, CDP won the 2013 ACEC Excellence Award for the Clays Mill Road project, an LFUCG project. Further, Mayor Jim Gray proclaimed September 26, 2013 as **CDP Engineers Day** for its work on the Clays Mill Road project and for also being awarded the Construction Project of the Year by the Kentucky’s American Public Works Association.*

Likewise, our Landscape Architecture Group has built a reputation for design excellence. Earlier in 2013, the Clark County Fiscal Court selected **CDP** through an extensive RFP process among the region’s top design teams for a \$680,000, 2-mile pedestrian trail and historic landscape preservation project at the Lower Howard’s Creek Nature Preserve (LHCNP). The Friends of LHCNP and their Clark County partners, ultimately decided that they wanted a team with the most applicable experience with trails planning that was also capable of providing them the attention and the high level of design service warranted by the unique needs of their project – not a standard “cookie-cutter” solution. We take pride in the level of quality discovered by the Friends of Lower Howard’s Creek during that selection process and are confident that CDP’s current team is also in line with LFUCG’s goals for this project.

We are excited about this opportunity and eager to assist the LFUCG by providing Professional Engineering Design or Planning related to Contracts 1 & 5.

Sincerely,



C. Lewis Dixon, PE, PLS
Vice President of Operations
(859) 267-7500 (ext. 1500)
ldixon@cdpengineers.com

Contract 1 Contact Info

Bob Walling, Vice President
Director of Transportation
(859) 267-7500 (ext. 1506)
bwalling@cdpengineers.com

Contract 5 Contact Info

Jason Hale, RLA, LEED AP
Landscape Architecture Group Mgr.
(859) 267-7500 (ext.1517)
jhale@cdpengineers.com

Qualifications – Contract 1 (Roadway Corridor & Intersection Design/Planning)

An award-winning firm, CDP Engineers (CDP) is a multi-disciplined firm that affords its clients the benefits of having the necessary disciplines working seamlessly under the same roof. Having the necessary disciplines for a project all under the same roof offers our clients the benefits of improved communication, better scheduling and workflows, and better coordination. In complying with the Affirmative Action Plan for this contract, CDP is happy to have added Abbie Jones Consulting (AJC) to our team to provide all the necessary Permitting associated with the upcoming projects. Without knowing the scope of each upcoming project, we hope to utilize AJC in the permitting role since this is likely to be an anticipated requirement. However, AJC is capable of contributing additionally by performing Traffic Counts and Land Surveying services.

CDP has six (6) separate groups that work autonomously within each individual group and routinely integrate on projects with different lead groups heading up each project depending on the scope of the project. The 6 groups that make up CDP's multi-disciplines include, 1) Transportation, 2) Civil/Stormwater, 3) Landscape Architecture, 4) Geomatics and Surveying, 5) Water/Wastewater, and 6) Planning. CDP's Transportation Group is pre-qualified with the Kentucky Transportation Cabinet (KYTC) for Rural & Urban Roadway Design, Surveying and Pedestrian & Bicycle Planning and Design. Included under these categories includes horizontal and vertical alignment studies, plan and profiles, cross road designs for intersections with major roads, drainage design and advanced drainage folder, pipe section sheets, utility relocations, maintenance of traffic, situation surveys, boundary surveys, easement and R/W descriptions, integration of photogrammetric mapping, public involvement activities, and coordination of geotechnical, structural, traffic, and environmental studies.

Mr. Bob Walling, Vice President, has served as CDP's Director of Transportation, since 2003. Mr. Walling joined CDP after retiring with 34 years of experience with KYTC. Now, having eleven (11) years of experience with CDP, he brings 45 years of experience to the table and is instrumental in overseeing all transportation related projects. Within CDP's Transportation Group, we have two very experienced Project Managers; Mr. Frank Pruitt, PE and Mr. Chad Collins, PE, both are available for this contract. Jonathan Nieman, PE, takes the lead on drainage design and advanced drainage folder. Dave Uckotter, PE, former LFUCG Director of Engineering for 20 years acts as a liaison on LFUCG projects because of his in depth knowledge of LFUCG processes. Steve Green, PLS, has served as CDP's Geomatics/Surveying manager for the last 12 years and is the longest tenured CDP staff member other than the founders, having served CDP for nearly 23 years. Lewis Dixon, PE, PLS, Vice-President of Operations and one of the original founders of CDP will serve as one of the QA/QC staff members.

CDP has experience working in seven of the twelve KYTC Districts, including District 2 (Madisonville), District 4 (Elizabethtown), District 7 (Lexington), District 9 (Flemingsburg), District 10 (Jackson), District 11 (Manchester) and District 12 (Pikeville). We also have recent experience working for individual communities, including LFUCG, and the cities of Berea, Richmond, Nicholasville, and Morehead. Having worked on and completed a variety of project types for KYTC districts across the state of Kentucky and also having worked with numerous Kentucky cities, CDP possesses considerable versatility when working on various transportation related projects.

Qualifications – Contract 5 (Pedestrian, Bike or Multimodal Trail Design/Planning)

CDP Engineers is capable of providing professional services in a wide variety of design disciplines and has assembled a team that is most appropriate to provide the LFUCG Division of Engineering with the required engineering related services for the design and/or planning of pedestrian, bike, or multi-modal trails. The team we have assembled is distinctly capable of providing the necessary tasks that may include surveying, long-range trail planning, conceptual design development, detailed construction drawings, stormwater management, hydraulic modeling, and specific permitting requirements. CDP is a Lexington-based firm that

has the best interests of LFUCG and the surrounding community in mind when considering the continued success of trails and the connectivity of alternate modes of transportation. We understand the importance of trail projects and how they can benefit a community by appealing to tourists and other user groups that may not otherwise have a reason to visit. In addition to serving the city with an alternative transportation method, trails serve as a recreational destination and an alternate way of experiencing a city. Our long-term vision is to contribute to the connectivity of a shared-use trail network within Fayette County and surrounding communities which highlights unique features only available within the region.

CDP specializes in the technical expertise, has a proven history of successful trail planning, and has provided professional services resulting in the development of construction documents for numerous trails within Central Kentucky. CDP has regional experience in the design and implementation of non-motorized and pedestrian facilities within both urban and rural settings. Our landscape architecture and transportation groups collaborate to develop innovative design solutions using *AASHTO Guide for the Development of Bicycle Facilities* and the *Urban Bikeway Design Guide* by NACTO as our foundation. Additionally, CDP is pre-qualified with the Kentucky Transportation Cabinet for bikeway planning, rural and urban highway design, and surveying (among others).

Mr. Jason Hale, RLA, serves as CDP's Landscape Architecture/Planning Group Manager. Mr. Hale has 14 years of experience; 8 years with CDP. Within CDP's Landscape Architecture/Planning Group, we have two experienced Landscape Architecture graduates; Ms. Lisa Shuster and Mr. Evan McDaniel, both of which are available for this contract. Jonathan Nieman, PE, CFM, takes the lead on any drainage design activities. Dave Uckotter, PE, former LFUCG Director of Engineering for 20 years acts as a liaison on LFUCG projects because of his in depth knowledge of LFUCG processes. Steve Green, PLS, has served as CDP's Geomatics/Surveying manager for the last 12 years and is the longest tenured CDP staff member other than the founders, having served CDP for nearly 23 years. Lewis Dixon, PE, PLS, Vice-President of Operations and one of the original founders of CDP will serve as one of the QA/QC staff members.

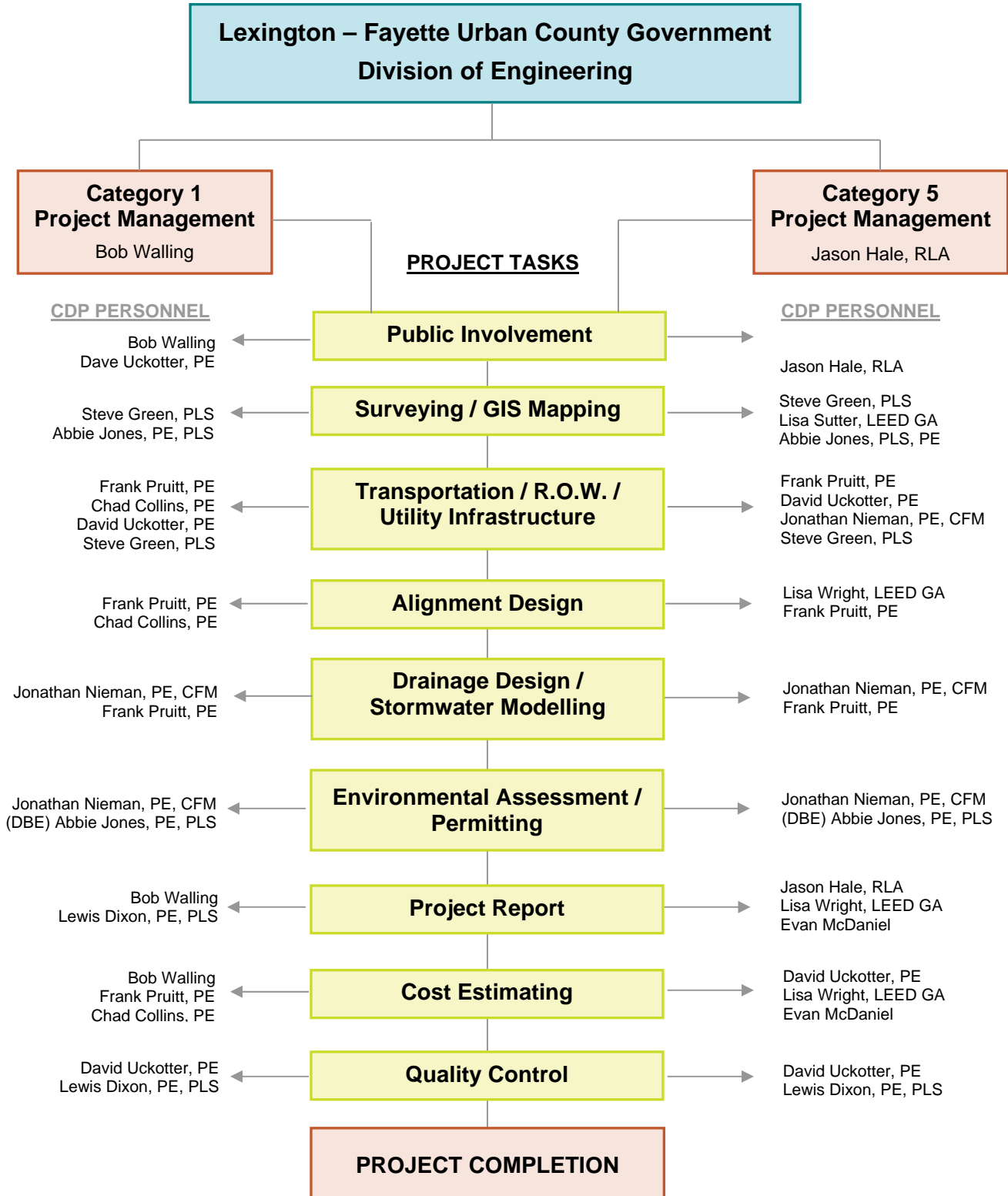
As the city engineer for the City of Berea, CDP has assisted the city with the planning, design, and construction administration of approximately 5.4 miles of shared-use paths and bike trails within their community. We have also coordinated the design of approximately 4.8 miles of shared-use paths on two KYTC funded projects in Berea (*KY 956 – Berea Bypass, Section 2 and US-25*). The City of Berea is progressive in its efforts to develop a vast network of shared-use paths, bike trails, and hiking trails to serve their community. In close connection to the community of Berea, CDP has been instrumental in developing a comprehensive transportation plan for the City of Richmond and Madison County which is intended to guide the future growth and connectivity into outlying regions of the county.

Additionally, as a result of being able to demonstrate our complete experience and qualification with trail design and construction, CDP was awarded and is presently under contract with the Lexington – Fayette Urban County Government to perform the construction documents for the third phase of Town Branch Trail in Lexington. Once property negotiations are finalized between LFUCG and RJ Corman, and RJ Corman completes work to relocate the Town Branch Creek in one location, CDP's design work to extend the Town Branch Trail eastward from Alexandria Drive to the Bluegrass Community and Technical College campus can begin.

Resumes of key design team personnel are contained within this proposal in Section 3 covering both Contract 1 and Contract 5. An organizational chart is provided at the beginning of Section 3 to detail where each staff member fits within each Contract type. Additional support staff will be available to contribute to this project as needed. Though specific projects may not yet be known, our staff members possess an array of skills sets. We will assign the necessary resources according to the individual project requirements. Another factor worthy of noting is that Contracts 1 and 5 are very similar for CDP, in that we utilize several CDP staff members in common that contribute in both areas, since many transportation projects incorporate bike lanes and shared-use trails.

Organizational Chart

We have provided an outline of the proposed work team in the attached diagram. Because the projects are currently unknown, the outlined project tasks have been provided based on past project experience. The resumes for associated personnel have been provided in this section.



Bob Walling

Director of Transportation

Education:

Highway Design, 1966, Winchester Technical College

Training:

- AASHTO Roadside Design Guide; KYTC
- UK College of Engineering KY Transportation Center “Thinking Beyond the Pavement”
- Public Involvement in NEPA & Transportation Decision-Making Process
- Best Practice in Wetland Mitigation & Stream Restoration

Experience:

With more than 40 years of experience in multimodal transportation design, Mr. Walling’s career with the Kentucky Transportation Cabinet (KYTC) included 34 as District 7 Project Manager. His experience includes all phases of highway design, encompassing scoping studies, right-of-way plans, right-of-way negotiations and public involvement. Bob will oversee all transportation related components of the project.

Relevant Project Experience:

- **Clays Mill Road, Lexington, KY;** Reconstruction of Clays Mill Road from Man O’ War Boulevard to Harrodsburg Road, a 3.7-mile arterial within the context of a residential setting.
- **Menelaus Road (KY 1983), Berea, KY – Kentucky Transportation Cabinet;** Principal-in-Charge for Phase I and Phase II urban roadway designs for the 1.98-mile Menelaus Road project in Berea, Madison County, Kentucky.
- **Helechawa Road (KY 205), Lee City, Kentucky – Kentucky Transportation Cabinet;** Principal-in-Charge for the Phase 1 and Phase 2 rural roadway design for the 6.32-mile KY 205 project in Wolfe County.
- **Cigar Lane, Lexington, KY;** Phase I and Phase II roadway design improvements in preparation for the 2010 FEI World Equestrian Games hosted at KY Horse Park.
- **Mayde Road, Berea, KY,** Principal in charge for the widening of approximately 1.5 miles of a 2 lane rural roadway to a three 12-foot lane urban section.
- **Berea Bypass, Berea, KY – Kentucky Transportation Cabinet, 2000-Present,** Phase I and Phase II roadway designs for the 5.5-mile Berea Bypass. Mr. Walling served as District 7 Project Manager while with the KYTC.

Jason Hale, RLA, LEED AP

Landscape Architecture and Planning Group Manager

Education & Training:

University of Kentucky, 2001, Bachelor of Science,
Landscape Architecture

KYTC & UK College of Engineering, October 2012

Completed “LPA Project Guide Training” Course

Professional Registration:

Licensed Professional Landscape Architect, KY#730

Experience:

Mr. Hale has professional experience in the planning, design, and development of projects with responsibilities including every aspect of Landscape Architecture from the initial inventory analysis to preliminary schematic design stage to final construction document preparation/ implementation and construction administration. He is driven to successfully integrate unique, artistic expression with environmentally conscious design in a creative and comprehensive approach. Jason is currently the Manager of the Landscape Architecture and Planning Department and will serve as Project Manager for the selected pedestrian, bike, or multi-modal trail design and/or planning projects.

Relevant Project Experience:

Coldstream Bio-Infiltration Swale and Trail: Lexington, KY; Manager responsible for the preparation of a master plan for the University of Kentucky Coldstream Research Campus that is intended to phase the development of numerous water quality features designed to treat stormwater runoff from the upstream watershed of the campus. Also included is a proposed trail connection which will link the internal pedestrian sidewalk network with the Legacy Trail.

Relevant Project Experience (continued):

- **West Hickman Trail, Section 1A: Lexington, KY;** Manager responsible for the design and construction document preparation of a 1,550 LF shared-use, concrete trail including a bridge which crosses West Hickman Creek. First phase links Veterans Park to surrounding neighborhood and Veterans Elem school.
- **Lower Howard’s Creek, Trail Improvement Project: Clark Co, KY;** Project manager responsible for the preparation of LPA submittal and associated construction documents which proposes nearly 2-miles of recreational trails and restores several hundred linear feet of dry-staked limestone walls along former pioneer-era roads.
- **Legacy Trail Extension Project: Scott Co., KY;** Manager responsible for the development of a feasibility study which evaluates several trail alignments intended to extend the Legacy Trail from KY Horse Park to the downtown Georgetown, including several city owned parks, the Georgetown College campus, and other features within the community. Additional responsibilities include the preparation of cost estimates and public involvement.
- **Veterans Park Mountain Bike Trail, Lexington, KY;** Project Manager responsible for the design construction document preparation of a 5-mile trail system within the 235-acre park which offers a range of trail types designed to challenge various skill levels of mountain bike riders.
- **Cigar Lane, Kentucky Horse Park, Lexington, KY;** Project staff responsible for the design of the aesthetic treatment along the existing 3/4 mile road within the Historical Kentucky Horse Park. Treatment included design for entrance signage, bridge crossing, road roundabout, and plantings along road existing stream.

Frank Pruitt, PE*Project Engineer***Education**

University of Kentucky, 1998, Bachelor of Science, Civil Engineering

Professional Registration

PE KY #22891

Training

- KSPE & ACEC – Applying In Roads I, II, and III Select CAD V8.
- University of Florida, McTrans Center – Highway Capacity Analysis and Signal Capacity Analysis

Experience:

Mr. Pruitt has 15 years of experience (all with CDP) on a variety of engineering projects. He has extensive experience in the design of infrastructure projects involving rural & urban roadway designs, stormwater mgmt., site development, water distribution, and sanitary sewer projects. Mr. Pruitt has served as Project Engineer on the Cigar Lane, Berea Bypass, Clays Mill Rd Widening, Menelaus Rd (KY 1983) and Parkers Mill Rd (KY 1968) projects.

Relevant Project Experience

- **Berea Bypass, Berea, KY – Kentucky Transportation Cabinet;** Project Manager for Phase I and Phase II rural roadway designs for the 5.5-mile Berea Bypass. The roadway was intended to relieve congestion in downtown Berea by providing an alternate route between I-75 and KY 21 and included two access roads into Berea's Industrial Park. The bypass is a four-lane rural arterial, limited access, with a 40' depressed median. CDP's services included alignment studies, vertical geometrics, cross road designs, drainage designs, right-of-way plans, and preparation of plans and profile.
- **US 60 Bridge over Hays Branch, Rowan Co., KY. Kentucky Transportation Cabinet;** Project Engineer for Phase 1 and 2 roadway designs for the 1.0-mile US 60 project in Rowan County. This project is intended to improve local roadway utilization through enhancement of the existing roadway typical section and horizontal alignment deficiencies. The improved 2-lane roadway typical facilitated two 12-foot driving lanes with 8-foot shoulders.
- **Menelaus Road (KY 1983), Berea, KY – Kentucky Transportation Cabinet;** Project Manager for Phase I & II urban roadway designs for the 1.98-mile Menelaus Rd project.

Jonathan E. Nieman, PE, CFM, LEED AP*Project Engineer***Education:**

University of Kentucky, Master of Science, 2002, Civil Engineering / Water Quality
 University of Kentucky, Bachelor of Science, 2000, Civil Engineering

Professional Registration:

Professional Engineer, KY # 25350
 Certified Floodplain Manager
 NSPE National Society of Professional Engineers

Experience:

Mr. Nieman started his career in 2002 with experience in both hydrologic and open and closed hydraulic system analysis. His experience also includes site design, storm sewer design, flood insurance studies, watershed modeling and sanitation. Mr. Nieman is proficient in most of the current design and modeling software including AutoCAD 2002-2009, ArcView GIS 3.2, XP SWMM, and HEC-RAS and has familiarity with Pipe2000 and WaterCAD. Jonathan will serve as lead design engineer for proposed stormwater system and infrastructure for the project.

Relevant Project Experience:

- **Sub Basin R Drainage Improvements, Danville, KY;** Project engineer for the design of stormwater wetlands, detention basins and other drainage infrastructure rehabilitation.

Relevant Project Experience (continued):

- **Downtown Streetscape and Infrastructure Improvements: Daviess County, Owensboro, KY;** Project engineer for the drainage design of a streetscape renovation in downtown Owensboro. Responsibilities included retrofitting an existing drainage system to reduce flooding and separate storm water from the sanitary sewer system.
- **Center City Park: Clark County, Springfield, OH;** Project engineer for the drainage design of a new park in downtown Springfield. Responsibilities included design of an underdrain system for the park, new street inlets and a retrofit of an existing street drainage system to reduce street flooding
- **Sunset Avenue Green Street, Richmond, KY;** Project Manager responsible for preparing plan which extends and replaces an undersized drainage system in an older neighborhood. The project incorporated rain gardens and pervious concrete sidewalks with conventional curb and gutter upgrades.
- **Devins Ditch Separation Project, Owensboro, KY;** Design engineer for the separation of storm water from the sanitary sewer system in the 411 acre Devins Ditch watershed. The final design incorporated a 20 acre constructed wetland regulated by a pump station that effectively eliminated storm water flows into the sanitary sewer system.

David A. Uckotter, PE*Project Engineer***Education:**

Thomas More College, 1972, Bachelor of Arts, Physics
 University of Dayton, Ohio, 1972, Bachelor of Civil Engineering
 Purdue University, 1974, Masters of Science, Civil Engineering

Registration + Professional Affiliations:

Professional Engineer, Kentucky #12085
 Professional Engineer, Ohio #41468
 National Society of Professional Engineers
 Kentucky Society of Professional Engineers
 American Society of Civil Engineers

Experience:

Mr. Uckotter has over 30 years of increasingly responsible experience as an engineer in public service. Dave was the director of two different divisions within the Lexington-Fayette Urban County Government Department of Public Works, including four years as Director of Traffic Engineering and over 20 years as Director of Engineering. Activities included the planning, design and construction of streets, highways, bikeways, computerized signal systems, geographic information systems (GIS) implementation, comprehensive storm drainage programs, sanitary sewers, infrastructure planning, greenways, implementation of stormwater management plans required as part of the federal Clean Water Act, and management of public infrastructure projects installed as part of new development. Mr. Uckotter will serve as a team member responsible for quality control on this project.

Relevant Project Experience:

- **Man o War Boulevard: Lexington, KY;** 16-mile, four-lane boulevard (new arterial) including interchange with I-75.
- **Citation Boulevard: Lexington, KY;** 5-mile long four-lane boulevard, new arterial.
- **Expansion Area Roadway Master Plan: Lexington, KY;** Preliminary design for over five miles of new boulevards and park roads to provide major access to 5400 acre expansion of the urban service area in Lexington-Fayette County.
- **Clays Mill Road: Lexington, KY;** 4-mile widening and reconstruction including bike lanes.
- **Virginia Avenue: Lexington, KY;** Widening and replacement of a railroad bridge.
- **Rose Street Extension: Lexington, KY;** Widening and extension of a downtown street.
- **Limestone Street: Lexington, KY;** Reconstruction of three blocks of roadway in the center of downtown.
- **Martin Luther King Boulevard: Lexington, KY;** Bridge replacement and street realignment in the center of downtown.

Lewis Dixon, PE, PLS*Vice President of Operations
QA/QC***Education:**

University of Kentucky, 1984, Bachelor of Science, Mining Engineering

Professional Registration:

PE, KY #15717
 PE, OH #60920402
 PLS, KY #3000

Experience:

Mr. Dixon is the Co-founder and Vice President of Operations of CDP Engineers. He has 28 years of experience (23 years with CDP) covering a wide range of projects and can provide essential QA/QC. Mr. Dixon served as Surveying Manager for CDP from 1989 to 2004. He was responsible for the successful completion of over 400 surveying projects. These projects included boundary, easement, photo control, topographic, ALTA/ACSM, hydrographic and construction surveys. He has managed projects for a variety of clients, including the KY Transportation Cabinet, Lexington Fayette Urban Co. Gov., City of Berea, KY-American Water, the U.S. Army COE, the KY Div. of Abandoned Lands, KY Utilities, and several municipalities and private clients.

Relevant Project Experience:

- **Helechawa Road – KY 205, Lee City, KY**
- **US 60 Bridge over Hays Branch, Rowan County**
- **Berea Bypass, Berea, KY**
- **Clays Mill Road Scoping Study, Lexington, KY**
- **Menelaus Road Utility Relocation, Berea, KY**
- **Mayde Road Railroad Crossing, Berea, KY**
- **Clays Mill Mason Headley Rd Widening, Lexington, KY**
- **East Nicholasville Bypass, Nicholasville, KY**
- **Cigar Lane, Kentucky Horse Park, Lexington, KY**
- **Saron Drive Extension Project, Lexington, KY**
- **Mayde Road–KY 595 Bike Path, Berea, KY**
- **KY 11 Utility Relocations, Mt. Sterling, KY**
- **Cardinal Run Park Entrance Improvements Project, Lexington, KY**

Chad Collins, PE*Project Manager***Education:**

University of Kentucky, 1998, Bachelor of Science, Civil Engineering

Professional Registration:

PE, KY #23133

PE, OH #70548

PE, TN #00115388

Training:

InRoads III V8.9 (XM)

Traffic Management Plan Training

Roundabout Design Workshop

Water Surface Profile Computations-HEC-RAS

Soil Erosion and Sediment Control

Thinking Beyond the Pavement

Experience:

Mr. Collins has over 15 years of experience with the design and construction of civil and transportation projects within Kentucky, Indiana, and Ohio. His experience in roadway design includes open channel flow analysis, horizontal and vertical alignments, feasibility studies, geometric computations, quantity calculations, maintenance of traffic plans, project estimates, and various computer applications for plan preparation. Mr. Collins has also served as a Project Construction Engineer with duties of project planning, scheduling, and managing of State Highway projects. His design experience has led to training and usage of numerous software design and modeling packages including AutoCAD, Micro Station, In-Roads, Geopak, SWMM, and HEC-RAS.

Relevant Project Experience:

- **US 60 Bridge over Hays Branch, Rowan Co. – Kentucky Transportation Cabinet;** Project Manager for Phase 1 and 2 rural roadway designs for the 0.5-mile US 60 Bridge Replacement and approaches in Rowan Co .
- **Helechawa Road (KY 205), Wolfe County, Kentucky Transportation Cabinet;** Project Manager for Phase 1 and Phase 2 of the rural roadway design for the 6.32-mile KY 205 project in Wolfe County.
- **Menelaus Road (KY 1983), Berea, KY – Kentucky Transportation Cabinet;** Project Engineer for Phase I and Phase II urban roadway designs for the 1.98-mile Menelaus Road project in Madison County. The Menelaus Road project is to be widened to a 3-lane urban section with a 5-foot sidewalk on both sides of the roadway.
- **Mayde Road, Madison County, KY – City of Berea;** Project Engineer for the widening of approximately 1.5 miles of a 2 lane rural roadway to a three 12-foot lane urban section. This project will improve safety and accommodate an expansion of an existing industrial park along this corridor.
- **US 25, Berea, KY - City of Berea;** Mr. Collins served as a Project Engineer for the urban roadway design of US 25 through Berea, KY. The project involves widening the 1.25-mile roadway facility with a 5-lane urban typical section including pedestrian and bike facilities.
- **Shortline Pike Roadway Improvements, Berea, KY – City of Berea;** Urban widening project, including a multi-use trail for pedestrians and bicyclists.

Lisa W. Shuster, LEED Green Associate*Landscape Architecture Graduate***Education:**

The Ohio State University, 2007, Bachelor of Science,

Landscape Architecture

Minor, City and Regional Planning

Professional Certifications:

LEED Green Associate

Experience:

Ms. Shuster has five years of experience in the planning of greenways, park master plans, park design and base mapping. Additionally, Lisa has been involved on numerous projects carrying a strong emphasis of GIS (geographic information system) mapping. She has also been involved in all phases of a project from marketing and proposal through to construction documentation preparation.

Relevant Project Experience:

- **Lake Linville Master Plan, Mount Vernon, KY;** A Master Plan was prepared to prioritize the existing and desired site amenities for the Lake Linville Boat Dock and Marina. The design process included community involvement through public meetings along with site inventory and analysis.

Relevant Project Experience:

- **Coldstream Bio-Infiltration Swale and Trail, Lexington, Kentucky;** Project team member involved with the layout and design of a multi-use trail along the Lexington Coldstream Research Campus. The trail consists of both asphalt and porous concrete sections. Additional design elements include a bio-infiltration swale and precast retaining wall. Role responsibilities include, initial design, construction document preparation and construction inspection.
- **Lower Howard's Creek Nature & Heritage Preserve Trail Improvement Project, Clark County, Kentucky;** Project team member tasked with compiling base map information from existing resources and supplemental field data to serve as the basis for design. The proposed improvements encompass over 1.5 miles of hiking trail, the preservation and restoration of several hundred linear feet of dry-laid stone wall, interpretive signage, and a composting toilet. Project responsibilities include, but are not limited to, base mapping, construction document and specification preparation, and cost estimating.

Steve Green, PLS*Survey Department Manager***Education:**

University of Kentucky, 1982, Bachelor of Arts, Broadcasting

Professional Registration:Professional Land Surveyor,
KY #3539**Experience:**

Mr. Green's 21 years of surveying experience (all with CDP) includes boundary and route surveys, ALTA/ACSM surveys, photo control, topographic and hydrographic surveys, deed research, construction staking, and static and differential GPS surveys. He has developed an extensive proficiency in the use of traditional and state-of-the-art surveying equipment and in the use of AutoCAD and MicroStation. In addition, Mr. Green uses the latest survey and design software to translate field data into computer files from which final plan sheets are created.

Relevant Project Experience:

- **US 60 Bridge over Hays Branch, Rowan Co. – Kentucky Transportation Cabinet;** Mr. Green managed the survey operations on Phase I & Phase II roadway designs for the 0.5 mile US 60.
- **Clays Mill Road, Lexington, KY – Kentucky Transportation Cabinet;** Mr. Green managed the survey operations on Phase I & Phase II roadway designs for the 4.0 mile Clays Mill Road.
- **Berea Bypass, Berea, KY;** Mr. Green managed the field operations on Phase I and Phase II roadway designs for the 5.5-mile Berea Bypass. CDP procured photogrammetric mapping and supplemented the mapping with field surveys.
- **Cigar Lane, KY Horse Park, Fayette County, KY – KY Finance and Administration Cabinet;** Mr. Green managed the survey operations on Phase I & Phase II roadway designs for the 1.0 mile Cigar Lane, which included a 1-lane roundabout.

Abbie Jones, PE, PLS, CFM*President, Abbie Jones Consulting***Education:**

BS Civil Engineering, 2000, Tennessee Technological University

Training/Publications/Awards:

- KYTC Highway Design Guidance co-author to multiple chapters including Pre-Design
- Land Surveying, Southern Polytechnic State University
- 2011 Bluegrass Chapter Nominee, Kentucky Young Engineer of the Year
- 2006 Georgia Young Engineer of the Year
- Certified Floodplain Manager (CFM)
- Kentucky Profession in Erosion and Sedimentation Control-Roadway Inspector Certification (KPESC-RI)
- 40hr Hazwoper Training (in progress)

Experience:

With more than 14 years of experience in civil engineering, Ms. Jones's career has included time both as a consultant and a civil servant. Her experience includes all phases of highway pre-design, encompassing scoping studies, traffic counts, permitting, right-of-way plans, land surveys, easement negotiations and public involvement. Abbie will oversee permitting related components of the project.

Relevant Project Experience:

- **West Hickman Trunk Sewer-A, Lexington, KY;** Prepare permits and SWPPP with Jessamine County, LFUCG, KYDOW, and USACE.
- **SWPPP Plan;** Provide certified engineering services to contractors for LFUCG, UKY, and private projects since 2011: Idle Hour Park, Arlington Wickliffe Phase 2, Blazer East Dorm, Wildcat Dorm, 965 Warrington, and AT&T Broadway.
- **KYTC Permits;** Nicholasville Rd. Whitaker Bank
- **Easement Negotiations;** Idle Hour Trunk Sewer
- **KY EPA;** Permanent Easement Documents for Stearns Lumber Disaster Recovery and Survey Certification of Maxey Flats Landfill monitoring wells.
- **Cousins Westside, Alpharetta, GA;** Submit for Individual Permit for Stormwater with USACE and local jurisdictions, manage design project.
- **City Engineer, Hurst, TX;** Manage Engineering, GIS, Construction Inspection, and Floodplain Management staff and responsibilities including agency representation to TxDOT, NCTCOG, & STTC.
- **City Engineer, Milton, GA;** Engineer for start-up of new municipality, population 40,000. Develop all forms, permits, and agency relationships necessary for engineering, including GRTA and GDOT.

List of Clients (*Project names underlined and italicized*)
(*Highlighted projects are detailed in Section 5*)

Contract 1:

LFUCG – Division of Engineering
Mr. Keith Lovan, PE
(859) 258-3478
klovan@lfucg.com
Clays Mill Road Improvements
Mason Headley Road Widening
Cardinal Run Park Entrance

City of Berea
Mr. Randy Stone, City Administrator
(859) 986-8528
rstone@bereaky.gov
Bratcher Lane Improvements
Menelaus Pike Improvements
Mayde Road Improvements

KY Transportation Cabinet District 4
Mr. Joe Ferguson, PE
(270) 766-5066
Joseph.ferguson@ky.gov
KY 48/55 Bridge & Approaches

KY Transportation Cabinet District 7
Mr. Darrin Eldridge, PE
(606) 845-2551
Darrin.eldridge@ky.gov
Berea Bypass New Construction
US 25 Roadway Widening
Nicholasville Bypass

KY Transportation Cabinet District 9
Mr. Darrin Eldridge, PE
(606) 845-2551
Darrin.eldridge@ky.gov
US 60 Bridge & Approaches
CR 1338 Bridge & Approaches
KY 2 Bridge & Approaches
KY 474 Bridge & Approaches

KY Transportation Cabinet District 10
Mr. Darren Back, PE
(606) 666-8841
Darren.back@ky.gov
KY 205 Roadway Improvements

KY Transportation Cabinet District 11
Mr. David Fields, PE
(606) 598-2145
David.fields@ky.gov
KY 223 Bridge & Approaches
US 421 Bridge & Approaches

Contract 5:

University of Kentucky, Coldstream Research Campus
Mr. Jim Conner, Facilities Director
(859) 231-8324
jim.conner@uky.edu
UK Coldstream Bio-Infiltration Swale & Trail Project

Bluegrass Community Foundation
Ms. Christie Robinson
(859) 552-8855
christiem.robinson@gmail.com
Georgetown-Scott Co. Parks & Recreation Dept.
Ms. Geri Remley, Parks Director
gremley@thepavilionky.com
Georgetown-Scott Co. Legacy Trail Extension Study

LFUCG – Division of Engineering
Mr. Keith Lovan, PE
(859) 258-3478
klovan@lfucg.com
West Hickman Trail – Section 1A
Southland Drive Bike/Pedestrian Improvements
RJ Corman-Versailles Line, Rail w/ Trail Study
Town Branch Trail Master Plan
Clays Mill Road Improvements

Clark County Fiscal Court
Henry Branham, County Judge / Executive
(859) 745-0200
Ms. Clare Sipple, Preserve Manager
(859) 771-5406
claresipp@gmail.com
Lower Howard's Creek Trail Improvement Project

City of Berea
Mr. Randy Stone, City Administrator
(859) 986-8528
rstone@bereaky.gov
Indian Fort Shared-Use Trail
Mayde Road Shared-Use Trail
Short Line Pike Shared-Use Trail

LFUCG – Parks & Recreation
Ms. Michelle Kosieniak, Superintendent
michello@lexingtonky.gov
Mr. Brad Biliter, Project Manager
dbiliter@lexingtonky.gov
(859) 288-2961
Veterans Park Mountain Bike Trails Master Plan

List of Similar Design Services – Contract 1

Clays Mill Road Improvements: Lexington, KY Date: 2000-Present Cost: \$14 million; Phase I & II design and specifications meeting KYTC standards, prepared accurate base mapping, easement descriptions, traffic analyses, evaluated roadway geometrics, provided public involvement activities, landscape architecture services, bidding and construction administration. Project limits were Man-o-War Blvd. to Harrodsburg Rd, covering 4.0 miles. The purpose of project was to relieve traffic congestion.

Cardinal Run Park Entrance: Lexington, KY; Date: 2005 Cost: \$14 million; Phase I & II design and specifications meeting KYTC standards, prepared accurate base mapping, easement and R/W plats, alignment studies to increase vertical curve sight distance, roadside drainage designs, provided sidewalk connectivity to adjacent residential area, modular retaining wall to protect existing utility infrastructure and cost estimates. This project covered 0.3 miles of widening of Parkers Mill Road.

Menelaus Road Improvements: Berea, KY; Date: 2013; Cost: \$3.1 million; Phase I design and specifications meeting KYTC standards, performed surveying and photogrammetric mapping, easement and R/W descriptions, evaluated roadway geometrics, provided public information meetings, drainage design, and coordination of structural designs for box culverts. This project covered 1.98 miles of urban arterial roadway and was widened to a 3-lane urban section with 3-12' lanes and a 5' sidewalk on both sides.

Mayde Road Improvements: Berea, KY; Date: 2008; Cost: \$3 million; Phase I & II design and specifications meeting KYTC standards, performed surveying and photogrammetric mapping, easement and R/W descriptions, evaluated roadway geometrics, provided public information meetings, drainage design, and coordination of environmental, archaeology, and geotechnical studies. Project covered 1.2 miles of urban arterial roadway and was widened to a 3-lane urban section with 3-12' lanes and a 10' shared-use path.

KY 48/KY 55 Bridge & Approaches: Bloomfield, KY; Date: 2013-Present; Cost: \$3.1 million; Phase I & II design and specifications meeting KYTC standards, provided supplemental surveying, easement and R/W descriptions, evaluated roadway geometrics, provided public information meetings, drainage design, and coordination of structural designs for bridge and box culvert.

Berea Bypass: Berea, KY; Date: 1998-Present; Cost: \$40 million; Phase I & II design and specifications meeting KYTC standards, performed surveying and photogrammetric mapping, easement and R/W descriptions, extensive horizontal alignment study, cross road designs for intersections, provided public information meetings, drainage design, and coordination of environmental studies and structural designs for bridges and box culverts. This project covered 5.5 miles of new rural arterial roadway construction.

US 60 Bridge & Approaches: Rowan Co., KY; Date: 2005-2013; Cost: \$1.3 million; Phase I & II design and specifications meeting KYTC standards, prepared accurate base mapping, easement and R/W descriptions, extensive horizontal alignment studies, evaluated vertical geometrics, stream impact considerations, provided public information meetings, coordination of structural designs for bridge environmental studies and geotechnical services. This project covered 0.5 miles of rural major collector and a new bridge.

KY 205 Roadway Improvements: Wolfe Co., KY; Date: 2007-Present Cost: \$11 million; Phase I & II design and specifications meeting KYTC standards, prepared accurate base mapping, easement and R/W descriptions, horizontal and vertical alignment studies, provided public information meetings, hydraulic studies, pavement design, and coordination of structural, photogrammetry, environmental studies and geotechnical services. This project covered 6.32 miles of reconstructed KY 205, a rural major collector.

KY 233 Bridge & Approaches: Knox Co., KY; Date: 2013-Present; Cost: \$778,000; Phase I & II design and specifications meeting KYTC standards, prepared accurate base mapping, easement and R/W descriptions, extensive horizontal alignment studies, evaluated vertical geometrics, stream impact considerations, provided public information meetings, coordination of structural designs for bridge environmental studies and geotechnical services. This project covered 0.3 miles of rural major collector and a new bridge.

List of Similar Design Services – Contract 5

UK Coldstream Campus Trail and Bio-Infiltration Swale Project: Lexington, KY; **Date:** 2013 – Present; **Cost:** \$204,000. This project features a trail spur that connects the internal sidewalk network with Coldstream to the Legacy Trail. Nearly 600 LF of this trail is constructed using porous concrete where the trail is located within the 100-YR floodplain. Part of our scope included the preparation of a construction estimate and assisting through bidding / contract negotiations. The average of the eight bids received came within 1% of our original construction estimate and there have been no requested change orders to date.

Georgetown – Scott County Legacy Trail Extension Project: Georgetown, KY; **Date:** 2013-Present; **Cost (Design):** \$58,800. This project is a multi-phased feasibility study currently being developed which identifies potential trail corridors for a multi-use trail system connecting the northern boundary of the Kentucky Horse Park with downtown Georgetown at Royal Springs Park. Final recommendations will provide cost estimates for five separate trail sections and include trailhead design concepts.

West Hickman Trail (Section 1 A): Lexington, KY; **Date:** 2009 - 2010; **Cost:** \$408,000; is 1/3-mile trail constructed within Veterans Park which includes a 100'-0" bridge crossing West Hickman Creek and links the public park with Veterans Elementary School and existing sidewalk network. Starting in August 2013, the school incorporated the trail into an outdoor education curriculum that has been popular among both students and faculty. CDP also provided services required for floodplain modeling and the development of a FEMA conditional letter of map revision.

Southland Drive Bike / Pedestrian Improvements: Lexington, KY; **Date:** 2012 – Present; **Cost:** \$550,000. Southland Drive, a late 1950's urban development corridor, is experiencing a current renaissance with new plantings, new businesses, and new pavement resurfacing. CDP has met with citizens and property owners to collect information and investigate what will be required to make this a successful project both for the Urban County Government and the KY Transportation Cabinet. With input from the Southland Association, CDP has completed the design and included 2-way bike lanes; construction planned to start summer 2014.

Lower Howard's Creek Nature & Heritage Preserve Trail Improvement Project: Clark County, KY; **Date:** 2013 - Present; **Cost (Design):** \$58,000. This work will restore historic pioneer era roads as recreational pedestrian trails located within the Lower Howard's Creek Nature & Heritage Preserve. The scope of work includes the following: installation of sediment and erosion control measures, clearing / grubbing of overgrown understory vegetation, stabilization of the trails, repair of stone retaining, boundary, and turnpike fences, the installation of a vault toilet, expanded metal grating ditch crossings, proposed plantings, and the construction of a entrance kiosk with two interpretive sign panels.

Indian Fort Trail Project: Berea, KY **Date:** 2013; **Cost:** \$280,000. This project consists of a shared-use trail and bridge crossing Silver Creek in Madison County. The trail and bridge represent Phase One of the entire 15-mile proposed bicycle / walking system planned to connect downtown Berea and the historic Indian Fort Theater. CDP worked closely with the City of Berea on this project to develop a complete set of construction documents, advertising only the bridge crossing and associated approaches. The City then used our plans and completed the construction with their personnel and equipment.

Veterans Park Mountain Bike Trail (Master Plan & Construction Documents): Lexington, KY; **Date:** 2011; **Cost (Design):** \$30,000. The first scope of this project was to develop a long range trails plan for Veterans Park. Public input from residents and officials from Nicholasville-Jessamine County and Lexington determined that a trail system which challenges various skill levels of mountain bikers was the preferred direction. The master plan is the only park of its kind in Lexington, and the immediate region, which provides such diverse range of difficulty for various mountain bike rider skill levels. Approximately 2 of the total 5 miles of proposed trails have been construction to date.

Local Office

Prime Consultant	Location (City, State)	Date Office Established	Total No. of Employees	No. Employees Expected to work on DOE Projects
Name:	CDP Engineers			
Headquarters	Lexington, KY	1989	30	14
Local Office	Lexington, KY	1989	30	14
PM Location	Lexington, KY			
<i>Headquarters and local office are one in the same</i>				
Subconsultants:				
Name:	Abbie Jones Consulting			
Service Provided	Permitting			
Headquarters	Lexington, KY	2011	4	4
Local Office	Lexington, KY	2011	4	4
<i>Headquarters and local office are one in the same</i>				

Disadvantaged Business Enterprise (DBE) Involvement

CDP Engineers is committed to meeting the goals of LFUCG's DBE Involvement. We have a long and successful relationship working with DBEs across the state and several locally. We intend to meet these goals by the following means:

1. Initially, we have included Abbie Jones Consulting in our project team as our DBE firm because the need for permitting and surveying services can be anticipated within both contract categories 1 and 5.
2. CDP Engineers has familiarity working with regional DBE consultants that offer services in the disciplines of MEP, Structural, and project coordination with neighborhoods (public involvement). We can evaluate the need for these individual services as they are required according to assigned projects.
3. We are committed to meeting LFUCG's DBE initiatives in each Task Order that we are awarded.

AFFIDAVIT

Comes the Affiant, CDP Engineers, and after being first duly sworn, states under penalty of perjury as follows:

1. His/her name is C. Lewis Dixon, PE, PLS and he/she is the individual submitting the proposal or is the authorized representative of CDP Engineers the entity submitting the proposal (hereinafter referred to as "Proposer").

2. Proposer will pay all taxes and fees, which are owed to the Lexington-Fayette Urban County Government at the time the proposal is submitted, prior to award of the contract and will maintain a "current" status in regard to those taxes and fees during the life of the contract.

3. Proposer will obtain a Lexington-Fayette Urban County Government business license, if applicable, prior to award of the contract.

4. Proposer has authorized the Division of Central Purchasing to verify the above-mentioned information with the Division of Revenue and to disclose to the Urban County Council that taxes and/or fees are delinquent or that a business license has not been obtained.

5. Proposer has not knowingly violated any provision of the campaign finance laws of the Commonwealth of Kentucky within the past five (5) years and the award of a contract to the Proposer will not violate any provision of the campaign finance laws of the Commonwealth.

6. Proposer has not knowingly violated any provision of Chapter 25 of the Lexington-Fayette Urban County Government Code of Ordinances, known as "Ethics Act."

continued on next page

7. Proposer acknowledges that "knowingly" for purposes of this Affidavit means, with respect to conduct or to circumstances described by a statute or ordinance defining an offense, that a person is aware or should have been aware that his conduct is of that nature or that the circumstance exists.

Further, Affiant sayeth naught.



C. Lewis Dixon, PE, PLS

STATE OF Kentucky

COUNTY OF Fayette

The foregoing instrument was subscribed, sworn to and acknowledged before me by C. Lewis Dixon, PE, PLS on this the 26th day of March , 2014.

My Commission expires: November 4, 2015

Notary ID# 454453



NOTARY PUBLIC, STATE AT LARGE-KENTUCKY

EQUAL OPPORTUNITY AGREEMENT

The Law

- Title VII of the Civil Rights Act of 1964 (amended 1972) states that it is unlawful for an employer to discriminate in employment because of race, color, religion, sex, age (40-70) or national origin.
- Executive Order No. 11245 on Nondiscrimination under Federal contract prohibits employment discrimination by contractor and sub-contractor doing business with the Federal Government or recipients of Federal funds. This order was later amended by Executive Order No. 11375 to prohibit discrimination on the basis of sex.
- Section 503 of the Rehabilitation Act of 1973 states:

The Contractor will not discriminate against any employee or applicant for employment because of physical or mental handicap.

- Section 2012 of the Vietnam Era Veterans Readjustment Act of 1973 requires Affirmative Action on behalf of disabled veterans and veterans of the Vietnam Era by contractors having Federal contracts.
- Section 206(A) of Executive Order 12086, consolidation of Contract Compliance Functions for Equal Employment Opportunity, states:

The Secretary of Labor may investigate the employment practices of any Government contractor or sub-contractor to determine whether or not the contractual provisions specified in section 202 of this order have been violated.

The Lexington-Fayette Urban County Government practices Equal Opportunity in recruiting, hiring and promoting. It is the Government's intent to affirmatively provide employment opportunities for those individuals who have previously not been allowed to enter into the mainstream of society. Because of its importance to the local Government, this policy carries the full endorsement of the Mayor, Commissioners, Directors and all supervisory personnel. In following this commitment to Equal Employment Opportunity and because the Government is the benefactor of the Federal funds, it is both against the Urban County Government policy and illegal for the Government to let contracts to companies which knowingly or unknowingly practice discrimination in their employment practices. Violation of the above mentioned ordinances may cause a contract to be canceled and the contractors may be declared ineligible for future consideration.

Please sign this statement in the appropriate space acknowledging that you have read and understand the provisions contained herein. Return this document as part of your application packet.

Bidders

I/We agree to comply with the Civil Rights Laws listed above that govern employment rights of minorities, women, Vietnam veterans, handicapped and aged persons.


Signature

CDP Engineers, Inc.
Name of Business

WORKFORCE ANALYSIS FORM

Name of Organization: CDP Engineers, Inc. Total Company 03 Date: 03 19 2014

Categories	Total		White		Black		Other		TOTAL	
	M	F	M	F	M	F	M	F	M	F
Administrators	4	0	2	0			2	0	4	0
Professionals	14	3	10	3			0	1	10	4
Superintendents										
Supervisors										
Foremen										
Technicians	8	1	6	1			1	0	7	1
Protective Service										
Para-Professionals										
Office/Clerical	4	4	0	4					0	4
Skilled Craft										
Service/Maintenance										
TOTAL:	30	8	18	8	0	0	3	1	21	9

Prepared By: Vicky M. Clark, Benefits Manager
EEO/AA Officer
 Name and Title

WORKFORCE ANALYSIS FORM

Name of Organization: CDP Engineers, Inc. Lexington Office Date: 03 19 2014

Categories	Total	White		Black		Other		TOTAL	
		M	F	M	F	M	F	M	F
Administrators	4	2	0			2	0	4	0
Professionals	14	10	3			0	1	10	4
Superintendents									
Supervisors									
Foremen									
Technicians	8	6	1			1	0	7	1
Protective Service									
Para-Professionals									
Office/Clerical	4	0	4					0	4
Skilled Craft									
Service/Maintenance									
TOTAL:	30	18	8	0	0	3	1	21	9

Prepared By: Vicky M. Clark, Benefits Manager
EEO/AA Officer
 Name and Title



WORKPLACE ANALYSIS FORM

Name of Organization: CDP Engineers, Inc. All Offices Date: 03/ 19 2014

	New Hires Preceding 12 Months	Total		White		Black		Other		TOTAL	
		M	F	M	F	M	F	M	F	M	F
Administrators											
Professionals	1	1	0							1	0
Superintendents											
Supervisors											
Foremen											
Technicians	1	1	0							1	0
Protective Service											
Para-Professionals											
Office/Clerical											
Skilled Craft											
Service/Maintenance											
TOTAL:		2	0	2	0	0	0	0	0	2	0

Prepared By: Vicky M. Clark/EO/AA Officer
Name and Title

CDP ENGINEERS, INC.

3250 Blazer Parkway
Lexington, Kentucky 40509

AAP Year Date: January 2014 To January 2015

Employer Identification Number: 61-1176637

Affirmative Action Contact:

David D. Carter, President
CDP Engineers, Inc.
3250 Blazer Parkway
Lexington, Kentucky 40509
Phone: (859) 264-7500

Signed: 
David D. Carter

Title: President



Commitment to Equal Employment Opportunity (EEO)

It has been and will continue to be, the policy of CDP Engineers, Inc. to be an equal opportunity employer. The official EEO policy statement of CDP Engineers, Inc. is attached as Exhibit A. In keeping with this policy, CDP Engineers, Inc. will continue to recruit, hire, train and promote into all job levels the most qualified persons without regard to race, color, religion, sex or national origin. Similarly, CDP Engineers, Inc. will continue to administer all other personnel matters (such as compensation, benefits, transfers, layoffs, company-sponsored training, education, tuition assistance and social and recreational programs) in accordance with company policy.

CDP Engineers, Inc. bases employment decisions on objective standards so much as possible in the furtherance of equal employment opportunity.

CDP Engineers, Inc. has developed and implemented procedures to ensure that its employees are not harassed because of their race, color, religion, sex, national origin, or any other characteristic protected by law. Exhibit B is a copy of the Anti-Harassment Policy for CDP Engineers, Inc.

Internal Dissemination

CDP Engineers, Inc. will continue to make its equal employment opportunity policy known internally by:

- Including the policy in the Employee Policy Manual for CDP Engineers, Inc. A copy of the manual is issued to each employee.
- Conducting special meetings with executive, management and supervisory personnel to explain the intent of the policy, the president's attitude, and individual responsibilities for effective implementation.
- Conducting special meetings with all non-management and supervisory employees to discuss the policy and explain individual employee responsibilities.
- Explaining the policy thoroughly in employee orientation and management training programs.
- Posting a policy summary on company bulletin boards.

External Dissemination

CDP Engineers, Inc. will continue to disseminate its policy externally by:

- Informing recruiting sources, when utilized, verbally and in writing of company policy, stipulating that these sources actively recruit and refer minorities and women for all positions listed.
- Informing prospective employees of the existence of the affirmative action program and benefits, if any, which may be available to them under the program.

Responsibility for Implementation

David D. Carter, President of CDP Engineers, Inc, has the overall responsibility to implement CDP Engineers, Inc.'s equal employment opportunity policy and CDP Engineers, Inc. has appointed Vicky M. Clark, Benefits Administrator to serve as equal employment opportunity/affirmative action (EEO/AA) officer. The EEO/AA is authorized to supply reports and represents this company in all matters regarding this affirmative action plan.

Duties of the EEO/AA Officer

The duties of the EEO/AA Officer include:

- Developing policy statements, affirmative action programs and internal and external communication techniques.
- Maintaining a close liaison with the compliance staff of the Commission on Human Rights regarding non-discriminatory requirements.
- Conducting periodic audits of employment practices to ensure non-discrimination.
- Semi-annual or more frequent instruction of all supervisory personnel about equal employment opportunity/affirmative action non-discrimination responsibilities.
- Periodically instructing supervisors about their responsibilities to ensure that minorities are not subject to any type of discriminatory practices or harassment.
- Semi-annual reviews with all supervisory personnel to ensure that the EEO/AA program is being implemented at all levels..
- Notifying all minority recruitment sources in writing that this company is an equal employment opportunity/affirmative action employer and notification to same of job openings.

- Notification to all eligible employees regarding promotions or vacancies to ensure equal employment opportunity.
- Maintaining all facilities and activities on a non-discriminatory basis.
- Maintaining applicant flow data with the title of job, referral source, sex, race and final action with reasons for any rejections; and
- Seeking to utilize minorities to the same degree as all others based on the following factors in the civilian labor area:
 - The minority population of the labor area surrounding the facility;
 - The size of the minority unemployment forces in the area surrounding the facility;
 - The percentage of the minority workforce as compared with the total workforce in the area
 - The availability of minorities having requisite skills in the immediate labor area;
 - The availability of minorities having requisite skills in the reasonable recruitment area;
 - The availability of promotable and transferable minority employees in the company;
 - The existence of institutions capable of training persons in the requisite skills; and
 - The degree of training the company is reasonably able to undertake as a means of making all job classes available to minorities.

Compliance with Sex Discrimination Guidelines

It has been and continues to be the policy of CDP Engineers, Inc. not to discriminate on the basis of sex. To this end, we continue to do the following:

Recruitment and Advertisement

CDP Engineers, Inc. actively recruits both men and women for all jobs. Referral sources, when utilized, are informed that CDP Engineers, Inc. has no specific sex preference and seeks only qualified applicants without regard to race, color, sex, religion, or national origin.

Advertisements, when placed, are put in a general category with no sex preference indicated. All advertisements are followed by the statement, "Equal Employment Opportunity – M/F/D."

Job Policies and Practices

All written personnel policies clearly state that all policies and practices apply to every employee on an equal basis regardless of the sex of the employee.

All employees have equal opportunity for any job for which they are qualified. Sex is not considered a bona fide occupational qualification for any job within CDP Engineers, Inc.

No distinction is made between the sexes with regard to opportunity, wages, hours, benefits or other conditions of employment.

There is no distinction between the employment treatment or termination of a woman or a man based on marital status. Also, CDP Engineers, Inc. does not deny employment to women with young children, nor does it terminate employees of one sex in a particular job classification upon reaching a certain age.

CDP Engineers, Inc. provides appropriate and comparable physical facilities for both female and male employees.

No difference is made between women and men as to retirement age for any particular job.

Both women and men are eligible for all training programs and benefits offered by CDP Engineers, Inc. CDP Engineers, Inc. encourages women to participate in management training programs both in-house and outside CDP Engineers, Inc.

Compliance with Guidelines on Discrimination Because of Religion or National Origin

Equal Employment Policy

CDP Engineers, Inc. communicates its obligation to provide equal employment opportunity without regard to religion or national origin to all employees, including executives, managers and supervisors.

Internal procedures exist at CDP Engineers, Inc. to implement equal employment opportunity without regard to religion or national origin.

Disadvantaged Business Enterprise (DBE)

CDP Engineers, Inc. has contacted local government to obtain current listings of Disadvantaged Business Enterprise (DBE) subcontractors for referrals, including consulting engineers, single commodity consultants, planning consultants and utility rate "Cost of Service" study experts.

Active support is given to this program and other programs that are concerned with enhancing the employment opportunities of minorities and females.

EXHIBIT A

Equal Employment Opportunity Policy

In order to provide equal employment and advancement opportunities to all individuals, employment decisions at CDP Engineers, Inc. will be based on merit, qualifications, and abilities. CDP Engineers, Inc. does not discriminate in employment opportunities or practices on the basis of race, color, religion, sex (including pregnancy, childbirth or related medical conditions), national origin, ancestry, age disability, family care leave status, veteran status, marital status, sexual orientation or any other characteristic protected by law.

CDP Engineers, Inc. will make reasonable accommodations for qualified individuals with known disabilities unless doing so would result in an undue hardship. CDP Engineers, Inc. prohibits harassment of any individual on the basis of any characteristic listed above. For information regarding CDP Engineers, Inc.'s internal policies for addressing complaints of harassment, please refer to CDP Engineers, Inc.'s Anti-Harassment Policy.

This policy governs all aspects of employment, including selection, job assignment, compensation, discipline, termination, and access to benefits and training.

Any employees with questions or concerns about any type of discrimination in the workplace are encouraged to bring these issues to the attention of their immediate supervisor. Employees can raise concerns and make reports without fear of reprisal, harassment, intimidation, threats, coercion or discrimination because they: (1) file a complaint with CDP Engineers, Inc. or with federal, state, or local agencies; (2) assist or participate in any investigation, compliance review, hearing, or any other activity related to the administration of any federal, state or local equal employment opportunity or affirmative action statute; (3) oppose any act or practice made unlawful by federal, state or local law requiring equal employment opportunity or affirmative action; or (4) exercise any other employment right protected by federal, state or local law or its implementing regulations.

CDP Engineers, Inc. maintains an audit and reporting system to determine overall compliance with its equal employment opportunity mandates and to respond to any specific complaints applicants or employees file with the equal employment opportunity office. Overall responsibility for the implementation of the equal employment opportunity program and for affirmative action compliance activities for CDP Engineers, Inc. is assigned to David D. Carter who may be reached at (859) 264-7500.

EXHIBIT B

Anti-Harassment Policy

CDP Engineers, Inc. is committed to providing a workplace free of sexual harassment, intimidation, threats, coercion or discrimination (which includes harassment based on gender, pregnancy, childbirth, or related medical conditions) as well as harassment, intimidation, threats, coercion or discrimination based on such factors as race, color, religion, national origin, ancestry, age, physical disability, mental disability, medical condition, marital status, sexual orientation, family care leave status, or veteran status.

CDP Engineers, Inc. strongly disapproves of and will not tolerate harassment of employees by managers, supervisors or coworkers. Similarly, CDP Engineers, Inc. will not tolerate harassment by its employees of non-employees with whom CDP Engineers, Inc. has a business, service, or professional relationship.

Harassment includes verbal, physical, and visual conduct that creates an intimidating, offensive, or hostile working environment or that interferes with work performance. Such conduct constitutes harassment when (1) submission to the conduct is made either an explicit or implicit condition of employment; (2) submission to or rejection of the conduct is used as the basis for an employment decision; or (3) the harassment interferes with an employee's work performance or creates an intimidating, hostile or offensive work environment.

Harassing conduct can take many forms and includes, but is not limited to, slurs, jokes, statements, gestures, pictures or cartoons regarding an employee's sex, race, color, national origin, religion, age, physical disability, mental disability, medical condition, ancestry, marital status, sexual orientation, family care leave status or veteran status.

Sexually harassing conduct in particular includes all of these prohibited actions as well as other unwelcome conduct such as requests for sexual favors, conversation containing sexual comments and unwelcome sexual advances.

You should report any incident of harassment, including work-related harassment by any CDP Engineers, Inc. personnel or any other person, promptly to your supervisor or manager, (or to any member of management). Managers who receive complaints or who observe harassing conduct should inform David D. Carter immediately. CDP Engineers, Inc. emphasizes that you are not required to complain first to your supervisor if your supervisor is the individual who is harassing you.

Every reported complaint of harassment will be investigated thoroughly, promptly, and in a confidential manner. In addition, CDP Engineers, Inc. will not tolerate retaliation against any employee for cooperating in an investigation or for making a complaint to David D. Carter or any other manager.

In the case of CDP Engineers, Inc. employees, if harassment is established, CDP Engineers, Inc. will discipline the offender. Disciplinary action for a violation of this policy can range from verbal or written warnings up to and including immediate termination, depending upon the circumstances.

Firm Submitting Proposal: CDP Engineers

Complete Address: 3250 Blazer Parkway, Lexington, Kentucky 40509
Street City Zip

Contact Name: C. Lewis Dixon, PE, PLS Title: Vice President of Operations

Telephone Number: 859-264-7500 Fax Number: 859-264-7501

Email address: ldixon@cdpengineers.com

Lexington-Fayette Urban County Government
MWDBE PARTICIPATION GOALS

A. GENERAL

- 1) The LFUCG request all potential contractors to make a concerted effort to include Minority-Owned (MBE), Woman-Owned (WBE) and Disadvantaged (DBE) Business Enterprises as subcontractors or suppliers in their bids.
- 2) Toward that end, the LFUCG has established 10% of total procurement costs as a Goal for participation of Minority-Owned, Woman-Owned and Disadvantaged Businesses on this contract.
- 3) **It is therefore a request of each Bidder to include in its bid, the same goal (10%) for MWDBE participation and other requirements as outlined in this section.**

B. PROCEDURES

- 1) The successful bidder will be required to report to the LFUCG, the dollar amounts of all payments submitted to Minority-Owned or Woman-Owned subcontractors and suppliers for work done or materials purchased for this contract. (See Subcontractor Monthly Payment Report)
- 2) Replacement of a Minority-Owned or Woman-Owned subcontractor or supplier listed in the original submittal must be requested in writing and must be accompanied by documentation of Good Faith Efforts to replace the subcontractor / supplier with another MWDBE Firm; this is subject to approval by the LFUCG. (See LFUCG MWDBE Substitution Form)
- 3) For assistance in identifying qualified, certified businesses to solicit for potential contracting opportunities, bidders may contact:
 - a) The Lexington-Fayette Urban County Government, Division of Central Purchasing (859-258-3320)
- 4) The LFUCG will make every effort to notify interested MWDBE subcontractors and suppliers of each Bid Package, including information on the scope of work, the pre-bid meeting time and location, the bid date, and all other pertinent information regarding the project.

C. DEFINITIONS

- 1) A Minority-Owned Business Enterprise (MBE) is defined as a business which is certified as being at least 51% owned and operated by persons of African American, Hispanic, Asian, Pacific Islander, American Indian or Alaskan Native Heritage.

- 2) A Woman-Owned Business Enterprise (WBE) is defined as a business which is certified as being at least 51% owned and operated by one or more Non-Minority Females.
- 3) A Disadvantaged Business (DBE) is defined as a business which is certified as being at least 51% owned and operated by a person(s) that are economically and socially disadvantaged.
- 4) Good Faith Efforts are efforts that, given all relevant circumstances, a bidder or proposer actively and aggressively seeking to meet the goals, can reasonably be expected to make. In evaluating good faith efforts made toward achieving the goals, whether the bidder or proposer has performed the efforts outlined in the Obligations of Bidder for Good Faith Efforts outlined in this document will be considered, along with any other relevant factors.

D. OBLIGATION OF BIDDER FOR GOOD FAITH EFFORTS

- 1) **The bidder shall make a Good Faith Effort to achieve the Participation Goal for MWDBE subcontractors/suppliers. The failure to meet the goal shall not necessarily be cause for disqualification of the bidder; however, bidders not meeting the goal are required to furnish with their bids written documentation of their Good Faith Efforts to do so.**
- 2) Award of Contract shall be conditioned upon satisfaction of the requirements set forth herein.
- 3) The Form of Proposal includes a section entitled “MWDBE Participation Form”. The applicable information must be completed and submitted as outlined below.
- 4) **Failure to submit this information as requested may be cause for rejection of bid.**

E. DOCUMENTATION REQUIRED FOR GOOD FAITH EFFORTS

- 1) Bidders reaching the Goal are required to submit only the MWDBE Participation Form.” The form must be fully completed including names and telephone number of participating MWDBE firm(s); type of work to be performed; estimated value of the contract and value expressed as a percentage of the total Lump Sum Bid Price. The form must be signed and dated, and is to be submitted with the bid.
- 2) Bidders not reaching the Goal must submit the “MWDBE Participation Form”, the “Quote Summary Form” and a written statement documenting their Good Faith Effort to do so. If bid includes no MWDBE participation, bidder shall enter “None” on the subcontractor / supplier form). In addition, the bidder must submit written proof of their Good Faith Efforts to meet the Participation Goal:

- a. Advertised opportunities to participate in the contract in at least two (2) publications of general circulation media; trade and professional association publications; small and minority business or trade publications; and publications or trades targeting minority, women and disadvantaged businesses not less than fifteen (15) days prior to the deadline for submission of bids to allow MWDBE firms to participate.
- b. Included documentation of advertising in the above publications with the bidders good faith efforts package
- c. Attended LFUCG Central Purchasing Economic Inclusion Outreach event
- d. Attended pre-bid meetings that were scheduled by LFUCG to inform MWDBEs of subcontracting opportunities
- e. Sponsored Economic Inclusion event to provide networking opportunities for prime contractors and MWDBE firms
- f. Requested a list of MWDBE subcontractors or suppliers from LFUCG Economic Engine and showed evidence of contacting the companies on the list(s).
- g. Contacted organizations that work with MWDBE companies for assistance in finding certified MWDBE firms to work on this project. Those contacted and their responses should be a part of the bidder's good faith efforts documentation.
- h. Sent written notices, by certified mail, email or facsimile, to qualified, certified MWDBEs soliciting their participation in the contract not less than seven (7) days prior to the deadline for submission of bids to allow them to participate effectively.
- i. Followed up initial solicitations by contacting MWDBEs to determine their level of interest.
- j. Provided the interested MWDBE firm with adequate and timely information about the plans, specifications, and requirements of the contract.
- j. Selected portions of the work to be performed by MWDBE firms in order to increase the likelihood of meeting the contract goals. This includes, where appropriate, breaking out contract work items into economically feasible units to facilitate MWDBE participation, even when the prime contractor may otherwise perform these work items with its own workforce.

- k. Negotiated in good faith with interested MWDBE firms not rejecting them as unqualified without sound reasons based on a thorough investigation of their capabilities. Any rejection should be so noted in writing with a description as to why an agreement could not be reached.
- m. Included documentation of quotations received from interested MWDBE firms which were not used due to uncompetitive pricing or were rejected as unacceptable and/or copies of responses from firms indicating that they would not be submitting a bid.
- n. Bidder has to submit sound reasons why the quotations were considered unacceptable. The fact that the bidder has the ability and/or desire to perform the contract work with its own forces will not be considered a sound reason for rejecting a MWDBE quote. Nothing in this provision shall be construed to require the bidder to accept unreasonable quotes in order to satisfy MWDBE goals.
- o. Made an effort to offer assistance to or refer interested MWDBE firms to obtain the necessary equipment, supplies, materials, insurance and/or bonding to satisfy the work requirements of the bid proposal
- p. Made efforts to expand the search for MWBE firms beyond the usual geographic boundaries.
- q. Other--any other evidence that the bidder submits which may show that the bidder has made reasonable good faith efforts to include MWDBE participation.

Failure to submit any of the documentation requested in this section may be cause for rejection of bid. Bidders may include any other documentation deemed relevant to this requirement. Documentation of Good Faith Efforts are to be submitted with the Bid, if the participation Goal is not met.



MINORITY BUSINESS ENTERPRISE PROGRAM

Marilyn Clark
Minority Business Enterprise Liaison
Division of Central Purchasing
Lexington-Fayette Urban County Government
200 East Main Street
Lexington, KY 40507
mclark@lexingtonky.gov
859-258-3323

OUR MISSION: The mission of the Minority Business Enterprise Program is to facilitate the full participation of minority and women owned businesses in the procurement process and to promote economic inclusion as a business imperative essential to the long term economic viability of Lexington-Fayette Urban County Government.

To that end the city council adopted and implemented resolution 167-91—Disadvantaged Business Enterprise (DBE) 10% Goal Plan in July of 1991. The resolution states in part (a full copy is available in Central Purchasing):

“A Resolution supporting adoption of the administrative plan for a ten percent (10%) Minimum goal for disadvantaged business enterprise participation in Lexington-Fayette Urban County Government construction and professional services contracts; Providing that as part of their bids on LFUCG construction contracts, general Contractors shall make a good faith effort to award at least ten percent (10%) of All subcontracts to disadvantaged business enterprises; providing that divisions of LFUCG shall make a good faith effort to award at least ten percent of their Professional services and other contracts to disadvantaged business enterprises...”

A Disadvantaged Business Enterprise is defined as a business that has been certified as being at least 51% owned, operated and managed by a U.S. Citizen of the following groups:

- African-American
- Hispanic-American
- Asian/Pacific Islander
- Native American/Native Alaskan
- Non-Minority Female
- Economically and Socially Disadvantaged

We have compiled the list below to help you locate certified MBE, WBE and DBE certified businesses. Below is a listing of contacts for LFUCG Certified MWDBEs in Economic Engine (<https://lfucg.economicengine.com>)

Business	Contact	Email Address	Phone
LFUCG	Marilyn Clark	mclark@lexingtonky.gov	859-258-3323
Commerce Lexington – Minority Business Development	Tyrone Tyra	ttyra@commercelexington.com	859-226-1625
Tri-State Minority Supplier Diversity Council	Sonya Brown	sbrown@tsmsdc.com	502-625-0137
Small Business Development Council	Dee Dee Harbut UK SBDC	ddharbut@uky.edu	
	Shiree Mack	smack@uky.edu	
Community Ventures Corporation	James Coles	jcoles@cycky.org	859-231-0054
KY Department of Transportation	Melvin Bynes	Melvin.bynes@ky.gov	502-564-3601
	Shella Eagle	Shella.Eagle@ky.gov	502-564-3601
Ohio River Valley Women’s Business Council (WBENC)	Rea Waldon	rwaldon@gcul.org	513-487-6534
Kentucky MWBE Certification Program	Yvette Smith, Kentucky Finance Cabinet	Yvette.Smith@ky.gov	502-564-8099
National Women Business Owner’s Council (NWBOC)	Janet Harris-Lange	janet@nwbo.org	800-675-5066
Small Business Administration	Robert Coffey	robertcoffey@sba.gov	502-582-5971
LaVoz de Kentucky	Andres Cruz	lavozdcky@yahoo.com	859-621-2106
The Key News Journal	Patrice Muhammad	paatricem@kynewsjournal.com	859-373-9428



LFUCG MWDBE PARTICIPATION FORM

Bid/RFP/Quote Reference # RFP # 13-2014

The MWDBE subcontractors listed have agreed to participate on this Bid/RFP/Quote. If any substitution is made or the total value of the work is changed prior to or after the job is in progress, it is understood that those substitutions must be submitted to Central Purchasing for approval immediately.

MWDBE Company, Name, Address, Phone, Email	Work to be Performed	Total Dollar Value of the Work	% Value of Total Contract
1. Abbie Jones Consulting 1022 Fontaine Rd Lexington, KY 40502 (859) 559-3443 abbie@abbie-jones.com	Permitting	Unkown at this time. Submittal is for a prequalification list with no defined project.	up to 10%
2.			
3.			
4.			

The undersigned company representative submits the above list of MWDBE firms to be used in accomplishing the work contained in this Bid/RFP/Quote. Any misrepresentation may result in the termination of the contract and/or be subject to applicable Federal and State laws concerning false statements and false claims.

CDP Engineers
Company

March 26, 2014
Date

C. Lewis Dixon
Company Representative

Vice President of Operations
Title



MWDBE QUOTE SUMMARY FORM

Bid/RFP/Quote Reference # RFP # 13-2014

The undersigned acknowledges that the minority subcontractors listed on this form did submit a quote to participate on this project.

Company Name CDP Engineers	Contact Person C. Lewis Dixon, PE, PLS
Address/Phone/Email 3250 Blazer Parkway, Lexington, KY 40509 (859) 264-7500 / ldixon@cdpengineers.com	Bid Package / Bid Date RFP #13-2014

MWDBE Company Address	Contact Person	Contact Information (work phone, Email, cell)	Date Contacted	Services to be performed	Method of Communication (email, phone meeting, ad, event etc)	Total dollars \$\$ Do Not Leave Blank (Attach Documentation)	MBE * AA HA AS NA Female
Abbie Jones Consulting	Abbie Jones	abbie@abbie-jones.com 859-559-3443	3/13/2014	Permitting	Email	To be determined	DBE

(MBE designation / AA=African American / HA= Hispanic American/AS = Asian American/Pacific Islander/ NA= Native American)

The undersigned acknowledges that all information is accurate. Any misrepresentation may result in termination of the contract and/or be subject to applicable Federal and State laws concerning false statements and claims.

CDP Engineers
Company

C. Lewis Dixon
Company Representative

March 26, 2014
Date

Vice President of Operations
Title

LFUCG STATEMENT OF GOOD FAITH EFFORTS

Bid/RFP/Quote # RFP # 13-2014

By the signature below of an authorized company representative, we certify that we have utilized the following Good Faith Efforts to obtain the maximum participation by MWDBE business enterprises on the project and can supply the appropriate documentation.

- Advertised opportunities to participate in the contract in at least two (2) publications of general circulation media; trade and professional association publications; small and minority business or trade publications; and publications or trades targeting minority, women and disadvantaged businesses not less than fifteen (15) days prior to the deadline for submission of bids to allow MWDBE firms to participate.
- Included documentation of advertising in the above publications with the bidders good faith efforts package
- Attended LFUCG Central Purchasing Economic Inclusion Outreach event
- Attended pre-bid meetings that were scheduled by LFUCG to inform MWDBEs of subcontracting opportunities
- Sponsored Economic Inclusion event to provide networking opportunities for prime contractors and MWDBE firms
- Requested a list of MWDBE subcontractors or suppliers from LFUCG Economic Engine and showed evidence of contacting the companies on the list(s).
- Contacted organizations that work with MWDBE companies for assistance in finding certified MWBDE firms to work on this project. Those contacted and their responses should be a part of the bidder's good faith efforts documentation.
- Sent written notices, by certified mail, email or facsimile, to qualified, certified MWDBEs soliciting their participation in the contract not less than seven (7) days prior to the deadline for submission of bids to allow them to participate effectively.
- Followed up initial solicitations by contacting MWDBEs to determine their level of interest.
- Provided the interested MWBDE firm with adequate and timely information about the plans, specifications, and requirements of the contract.
- Selected portions of the work to be performed by MWDBE firms in order to increase the likelihood of meeting the contract goals. This includes, where appropriate, breaking out contract work items into economically feasible

units to facilitate MWDBE participation, even when the prime contractor may otherwise perform these work items with its own workforce

_____ Negotiated in good faith with interested MWDBE firms not rejecting them as unqualified without sound reasons based on a thorough investigation of their capabilities. Any rejection should be so noted in writing with a description as to why an agreement could not be reached.

_____ Included documentation of quotations received from interested MWDBE firms which were not used due to uncompetitive pricing or were rejected as unacceptable and/or copies of responses from firms indicating that they would not be submitting a bid.

_____ Bidder has to submit sound reasons why the quotations were considered unacceptable. The fact that the bidder has the ability and/or desire to perform the contract work with its own forces will not be considered a sound reason for rejecting a MWDBE quote. Nothing in this provision shall be construed to require the bidder to accept unreasonable quotes in order to satisfy MWDBE goals.

_____ Made an effort to offer assistance to or refer interested MWDBE firms to obtain the necessary equipment, supplies, materials, insurance and/or bonding to satisfy the work requirements of the bid proposal

_____ Made efforts to expand the search for MWBE firms beyond the usual geographic boundaries.

_____ Other - any other evidence that the bidder submits which may show that the bidder has made reasonable good faith efforts to include MWDBE participation.

Failure to submit any of the documentation requested in this section may be cause for rejection of bid. Bidders may include any other documentation deemed relevant to this requirement. Documentation of Good Faith Efforts are to be submitted with the Bid, if the participation Goal is not met.

The undersigned acknowledges that all information is accurate. Any misrepresentations may result in termination of the contract and/or be subject to applicable Federal and State laws concerning false statements and claims.

CDP Engineers
Company


Company Representative

3/26/2014
Date

Vice President of Operations
Title

GENERAL PROVISIONS

1. Each Respondent shall comply with all Federal, State & Local regulations concerning this type of service or good.

The Respondent agrees to comply with all statutes, rules, and regulations governing safe and healthful working conditions, including the Occupational Health and Safety Act of 1970, 29 U.S.C. 650 *et. seq.*, as amended, and KRS Chapter 338. The Respondent also agrees to notify the LFUCG in writing immediately upon detection of any unsafe and/or unhealthful working conditions at the job site. The Respondent agrees to indemnify, defend and hold the LFUCG harmless from all penalties, fines or other expenses arising out of the alleged violation of said laws.

2. Failure to submit ALL forms and information required in this RFP may be grounds for disqualification.
3. Addenda: All addenda, if any, shall be considered in making the proposal, and such addenda shall be made a part of this RFP. Before submitting a proposal, it is incumbent upon each proposer to be informed as to whether any addenda have been issued, and the failure to cover in the bid any such addenda may result in disqualification of that proposal.
4. Proposal Reservations: LFUCG reserves the right to reject any or all proposals, to award in whole or part, and to waive minor immaterial defects in proposals. LFUCG may consider any alternative proposal that meets its basic needs.
5. Liability: LFUCG is not responsible for any cost incurred by a Respondent in the preparation of proposals.
6. Changes/Alterations: Respondent may change or withdraw a proposal at any time prior to the opening; however, no oral modifications will be allowed. Only letters, or other formal written requests for modifications or corrections of a previously submitted proposal which is addressed in the same manner as the proposal, and received by LFUCG prior to the scheduled closing time for receipt of proposals, will be accepted. The proposal, when opened, will then be corrected in accordance with such written request(s), provided that the written request is contained in a sealed envelope which is plainly marked "modifications of proposal".
7. Clarification of Submittal: LFUCG reserves the right to obtain clarification of any point in a bid or to obtain additional information from a Respondent.
8. Bribery Clause: By his/her signature on the bid, Respondent certifies that no employee of his/hers, any affiliate or Subcontractor, has bribed or attempted to bribe an officer or employee of the LFUCG.

9. Additional Information: While not necessary, the Respondent may include any product brochures, software documentation, sample reports, or other documentation that may assist LFUCG in better understanding and evaluating the Respondent's response. Additional documentation shall not serve as a substitute for other documentation which is required by this RFP to be submitted with the proposal,
10. Ambiguity, Conflict or other Errors in RFP: If a Respondent discovers any ambiguity, conflict, discrepancy, omission or other error in the RFP, it shall immediately notify LFUCG of such error in writing and request modification or clarification of the document if allowable by the LFUCG.
11. Agreement to Bid Terms: In submitting this proposal, the Respondent agrees that it has carefully examined the specifications and all provisions relating to the work to be done attached hereto and made part of this proposal. By acceptance of a Contract under this RFP, proposer states that it understands the meaning, intent and requirements of the RFP and agrees to the same. The successful Respondent shall warrant that it is familiar with and understands all provisions herein and shall warrant that it can comply with them. No additional compensation to Respondent shall be authorized for services or expenses reasonably covered under these provisions that the proposer omits from its Proposal.
12. Cancellation: If the services to be performed hereunder by the Respondent are not performed in an acceptable manner to the LFUCG, the LFUCG may cancel this contract for cause by providing written notice to the proposer, giving at least thirty (30) days notice of the proposed cancellation and the reasons for same. During that time period, the proposer may seek to bring the performance of services hereunder to a level that is acceptable to the LFUCG, and the LFUCG may rescind the cancellation if such action is in its best interest.

A. Termination for Cause

- (1) LFUCG may terminate a contract because of the contractor's failure to perform its contractual duties
- (2) If a contractor is determined to be in default, LFUCG shall notify the contractor of the determination in writing, and may include a specified date by which the contractor shall cure the identified deficiencies. LFUCG may proceed with termination if the contractor fails to cure the deficiencies within the specified time.
- (3) A default in performance by a contractor for which a contract may be terminated shall include, but shall not necessarily be limited to:
 - (a) Failure to perform the contract according to its terms,

- conditions and specifications;
- (b) Failure to make delivery within the time specified or according to a delivery schedule fixed by the contract;
 - (c) Late payment or nonpayment of bills for labor, materials, supplies, or equipment furnished in connection with a contract for construction services as evidenced by mechanics' liens filed pursuant to the provisions of KRS Chapter 376, or letters of indebtedness received from creditors by the purchasing agency;
 - (d) Failure to diligently advance the work under a contract for construction services;
 - (e) The filing of a bankruptcy petition by or against the contractor; or
 - (f) Actions that endanger the health, safety or welfare of the LFUCG or its citizens.

B. At Will Termination

Notwithstanding the above provisions, the LFUCG may terminate this contract at will in accordance with the law upon providing thirty (30) days written notice of that intent, Payment for services or goods received prior to termination shall be made by the LFUCG provided these goods or services were provided in a manner acceptable to the LFUCG. Payment for those goods and services shall not be unreasonably withheld.

13. **Assignment of Contract:** The contractor shall not assign or subcontract any portion of the Contract without the express written consent of LFUCG. Any purported assignment or subcontract in violation hereof shall be void. It is expressly acknowledged that LFUCG shall never be required or obligated to consent to any request for assignment or subcontract; and further that such refusal to consent can be for any or no reason, fully within the sole discretion of LFUCG.
14. **No Waiver:** No failure or delay by LFUCG in exercising any right, remedy, power or privilege hereunder, nor any single or partial exercise thereof, nor the exercise of any other right, remedy, power or privilege shall operate as a waiver hereof or thereof. No failure or delay by LFUCG in exercising any right, remedy, power or privilege under or in respect of this Contract shall affect the rights, remedies, powers or privileges of LFUCG hereunder or shall operate as a waiver thereof.
15. **Authority to do Business:** The Respondent must be a duly organized and authorized to do business under the laws of Kentucky. Respondent must be in good standing and have full legal capacity to provide the services specified under this Contract. The Respondent must have all necessary right and lawful authority to enter into this Contract for the full term hereof and that proper corporate or other action has been duly taken authorizing the Respondent to enter into this

Contract. The Respondent will provide LFUCG with a copy of a corporate resolution authorizing this action and a letter from an attorney confirming that the proposer is authorized to do business in the State of Kentucky if requested. All proposals must be signed by a duly authorized officer, agent or employee of the Respondent.

16. **Governing Law:** This Contract shall be governed by and construed in accordance with the laws of the Commonwealth of Kentucky. In the event of any proceedings regarding this Contract, the Parties agree that the venue shall be the Fayette County Circuit Court or the U.S. District Court for the Eastern District of Kentucky, Lexington Division. All parties expressly consent to personal jurisdiction and venue in such Court for the limited and sole purpose of proceedings relating to this Contract or any rights or obligations arising thereunder. Service of process may be accomplished by following the procedures prescribed by law.
17. **Ability to Meet Obligations:** Respondent affirmatively states that there are no actions, suits or proceedings of any kind pending against Respondent or, to the knowledge of the Respondent, threatened against the Respondent before or by any court, governmental body or agency or other tribunal or authority which would, if adversely determined, have a materially adverse effect on the authority or ability of Respondent to perform its obligations under this Contract, or which question the legality, validity or enforceability hereof or thereof.
18. Contractor understands and agrees that its employees, agents, or subcontractors are not employees of LFUCG for any purpose whatsoever. Contractor is an independent contractor at all times during the performance of the services specified.
19. If any term or provision of this Contract shall be found to be illegal or unenforceable, the remainder of the contract shall remain in full force and such term or provision shall be deemed stricken.



Signature

March 26, 2014
Date



CDPENGI-01 AWHATTENBAR

CERTIFICATE OF LIABILITY INSURANCE

DATE (MM/DD/YYYY)

3/26/2014

THIS CERTIFICATE IS ISSUED AS A MATTER OF INFORMATION ONLY AND CONFERS NO RIGHTS UPON THE CERTIFICATE HOLDER. THIS CERTIFICATE DOES NOT AFFIRMATIVELY OR NEGATIVELY AMEND, EXTEND OR ALTER THE COVERAGE AFFORDED BY THE POLICIES BELOW. THIS CERTIFICATE OF INSURANCE DOES NOT CONSTITUTE A CONTRACT BETWEEN THE ISSUING INSURER(S), AUTHORIZED REPRESENTATIVE OR PRODUCER, AND THE CERTIFICATE HOLDER.

IMPORTANT: If the certificate holder is an ADDITIONAL INSURED, the policy(ies) must be endorsed. If SUBROGATION IS WAIVED, subject to the terms and conditions of the policy, certain policies may require an endorsement. A statement on this certificate does not confer rights to the certificate holder in lieu of such endorsement(s).

PRODUCER Neace Lukens - Lexington/ Assured NL Insurance Agency Inc 2416 Sir Barton Way, Suite 300 Lexington, KY 40509	CONTACT NAME: Ashley Whattenbarger PHONE (A/C, No, Ext): (859) 543-1716 E-MAIL ADDRESS: ashley.whattenbarger@neacelukens.com	FAX (A/C, No): (859) 543-1987													
	<table border="1"> <thead> <tr> <th>INSURER(S) AFFORDING COVERAGE</th> <th>NAIC #</th> </tr> </thead> <tbody> <tr> <td>INSURER A : Selective Insurance of South Carolina</td> <td>19259</td> </tr> <tr> <td>INSURER B : Bridgefield Casualty Insurance Co</td> <td>10335</td> </tr> <tr> <td>INSURER C : Hanover Insurance Company</td> <td>22292</td> </tr> <tr> <td>INSURER D :</td> <td></td> </tr> <tr> <td>INSURER E :</td> <td></td> </tr> <tr> <td>INSURER F :</td> <td></td> </tr> </tbody> </table>		INSURER(S) AFFORDING COVERAGE	NAIC #	INSURER A : Selective Insurance of South Carolina	19259	INSURER B : Bridgefield Casualty Insurance Co	10335	INSURER C : Hanover Insurance Company	22292	INSURER D :		INSURER E :		INSURER F :
INSURER(S) AFFORDING COVERAGE	NAIC #														
INSURER A : Selective Insurance of South Carolina	19259														
INSURER B : Bridgefield Casualty Insurance Co	10335														
INSURER C : Hanover Insurance Company	22292														
INSURER D :															
INSURER E :															
INSURER F :															
INSURED CDP Engineers Inc./Mapsinc LLC 3250 Blazer Parkway Lexington, KY 40509															

COVERAGES**CERTIFICATE NUMBER:****REVISION NUMBER:**

THIS IS TO CERTIFY THAT THE POLICIES OF INSURANCE LISTED BELOW HAVE BEEN ISSUED TO THE INSURED NAMED ABOVE FOR THE POLICY PERIOD INDICATED. NOTWITHSTANDING ANY REQUIREMENT, TERM OR CONDITION OF ANY CONTRACT OR OTHER DOCUMENT WITH RESPECT TO WHICH THIS CERTIFICATE MAY BE ISSUED OR MAY PERTAIN, THE INSURANCE AFFORDED BY THE POLICIES DESCRIBED HEREIN IS SUBJECT TO ALL THE TERMS, EXCLUSIONS AND CONDITIONS OF SUCH POLICIES. LIMITS SHOWN MAY HAVE BEEN REDUCED BY PAID CLAIMS.

INSR LTR	TYPE OF INSURANCE	ADDL INSR	SUBR WVD	POLICY NUMBER	POLICY EFF (MM/DD/YYYY)	POLICY EXP (MM/DD/YYYY)	LIMITS
A	GENERAL LIABILITY <input checked="" type="checkbox"/> COMMERCIAL GENERAL LIABILITY <input type="checkbox"/> CLAIMS-MADE <input checked="" type="checkbox"/> OCCUR GEN'L AGGREGATE LIMIT APPLIES PER: <input type="checkbox"/> POLICY <input type="checkbox"/> PRO-JECT <input checked="" type="checkbox"/> LOC			\$1853822	8/7/2013	8/7/2014	EACH OCCURRENCE \$ 1,000,000 DAMAGE TO RENTED PREMISES (Ea occurrence) \$ 300,000 MED EXP (Any one person) \$ 10,000 PERSONAL & ADV INJURY \$ 1,000,000 GENERAL AGGREGATE \$ 3,000,000 PRODUCTS - COMPIOP AGG \$ 3,000,000 EPLI DEFENSE RE \$ 5,000
	AUTOMOBILE LIABILITY <input checked="" type="checkbox"/> ANY AUTO ALL OWNED AUTOS <input type="checkbox"/> HIRED AUTOS <input type="checkbox"/> SCHEDULED AUTOS NON-OWNED AUTOS			\$1853822	8/7/2013	8/7/2014	COMBINED SINGLE LIMIT (Ea accident) \$ 1,000,000 BODILY INJURY (Per person) \$ BODILY INJURY (Per accident) \$ PROPERTY DAMAGE (PER ACCIDENT) \$
A	<input checked="" type="checkbox"/> UMBRELLA LIAB <input checked="" type="checkbox"/> OCCUR <input type="checkbox"/> EXCESS LIAB <input type="checkbox"/> CLAIMS-MADE <input type="checkbox"/> DED <input checked="" type="checkbox"/> RETENTION \$			\$1853822	8/7/2013	8/7/2014	EACH OCCURRENCE \$ 5,000,000 AGGREGATE \$ Aggregate \$ 5,000,000
	WORKERS COMPENSATION AND EMPLOYERS' LIABILITY ANY PROPRIETOR/PARTNER/EXECUTIVE OFFICER/MEMBER EXCLUDED? (Mandatory in NH) <input type="checkbox"/> Y / N If yes, describe under DESCRIPTION OF OPERATIONS below		N/A	19610622	8/7/2013	8/7/2014	<input type="checkbox"/> WC STATUTORY LIMITS <input type="checkbox"/> OTHER E.L. EACH ACCIDENT \$ 1,000,000 E.L. DISEASE - EA EMPLOYEE \$ 1,000,000 E.L. DISEASE - POLICY LIMIT \$ 1,000,000
C	Professional Liabili			LHWA050893	7/11/2013	7/11/2014	\$25,000 Deductible 2,000,000

DESCRIPTION OF OPERATIONS / LOCATIONS / VEHICLES (Attach ACORD 101, Additional Remarks Schedule, if more space is required)

Professional Liability - \$2,000,000 each incident/\$2,000,000 aggregate with \$25,000 deductible

CERTIFICATE HOLDER

Lexington-Fayette Urban County Government

CANCELLATION

SHOULD ANY OF THE ABOVE DESCRIBED POLICIES BE CANCELLED BEFORE THE EXPIRATION DATE THEREOF, NOTICE WILL BE DELIVERED IN ACCORDANCE WITH THE POLICY PROVISIONS.

AUTHORIZED REPRESENTATIVE

© 1988-2010 ACORD CORPORATION. All rights reserved.



Lexington-Fayette Urban County Government
DEPARTMENT OF FINANCE & ADMINISTRATION

Jim Gray
Mayor

William O'Mara
Commissioner

ADDENDUM #1

RFP Number: **#13-2014**

Date: March 3, 2014

Subject: **Request for Qualifications for
Professional Engineering Services**

Please address inquiries to:
Theresa Maynard (859) 258-3320

TO ALL PROSPECTIVE BIDDERS:

Please be advised of the following clarifications to the above referenced RFP:

Paragraph two on page one should read as follows and agree with the date on the website:

"Sealed proposals will be received in the Division of Central Purchasing, Room 338, Government Center, 200 East Main Street, Lexington, KY, 40507, until **2:00 PM**, prevailing local time, on **March 26, 2014.**"

Paragraph one on page two should read as follows:

Deadline for questions after the Pre-proposal meeting shall be Tuesday, MARCH 12th, 2014 at 2:00 PM local time.

Todd Slatin, Director
Division of Central Purchasing

All other terms and conditions of the RFP and specifications are unchanged. This letter should be signed, attached to and become a part of your RFP.

COMPANY: CDP Engineers, Inc.

ADDRESS: 3250 Blazer Parkway, Lexington, Kentucky 40509

SIGNATURE OF PROPOSER: C. Lewis Dixon



Lexington-Fayette Urban County Government
DEPARTMENT OF FINANCE & ADMINISTRATION

Jim Gray
Mayor

William O'Mara
Commissioner

ADDENDUM #2

RFP Number: **#13-2014**

Date: March 7, 2014

Subject: **Request for Qualifications for
Professional Engineering Services**

Please address inquiries to:
Theresa Maynard (859) 258-3320

TO ALL PROSPECTIVE BIDDERS:

Please be advised of the following clarifications to the above referenced RFP:

Disregard Addendum #1 issued on this page earlier today, March 7, 2014. That addendum was for RFP #14-2014 Request for Qualifications – Supplemental Legal Services and posted to the page for RFP #13-2014 in error.

Todd Slatin, Director
Division of Central Purchasing

All other terms and conditions of the RFP and specifications are unchanged. This letter should be signed, attached to and become a part of your RFP.

COMPANY: CDP Engineers, Inc.

ADDRESS: 3250 Blazer Parkway, Lexington, Kentucky 40509

SIGNATURE OF PROPOSER:



Lexington-Fayette Urban County Government
DEPARTMENT OF FINANCE & ADMINISTRATION

Jim Gray
Mayor

William O'Mara
Commissioner

ADDENDUM #3

RFP Number: **#13-2014**

Date: March 17, 2014

Subject: **Request for Qualifications for
Professional Engineering Services**

Please address inquiries to:
Theresa Maynard (859) 258-3320

TO ALL PROSPECTIVE BIDDERS:

Please be advised of the following clarifications to the above referenced RFP:

- Sign in sheets from March 10th, 2014 Pre-Proposal Meeting attached
- Questions and Answers attached

Todd Slatin, Director
Division of Central Purchasing

All other terms and conditions of the RFP and specifications are unchanged. This letter should be signed, attached to and become a part of your RFP.

COMPANY: CDP Engineers, Inc.

ADDRESS: 3250 Blazer Parkway, Lexington, Kentucky 40509

SIGNATURE OF PROPOSER: C. Lewis Dixon



Relocate and Upgrade Electric Service

Improve Roadside Drainage

Man O War Monument

Proposed Entrance Signage and Roundabout

Access to Future Hotel

Distinctive New Bridge



cdpengineers