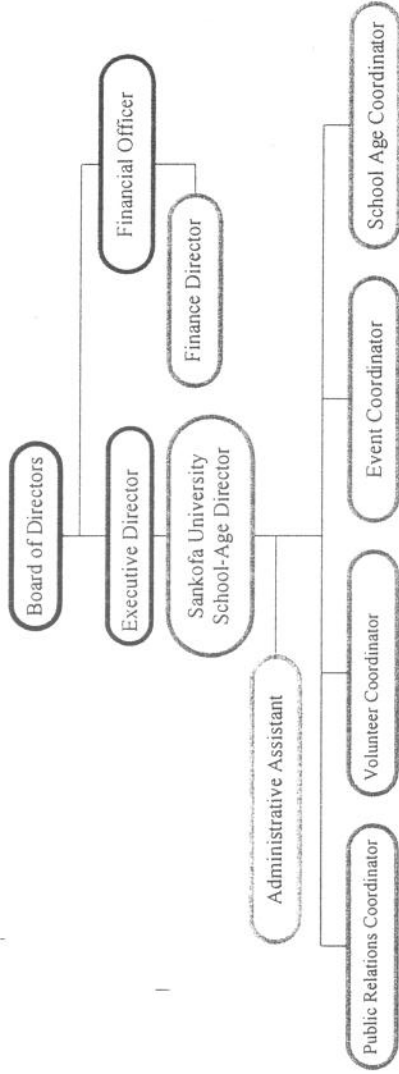


WEST END COMMUNITY EMPOWERMENT PROJECT

ORGANIZATIONAL CHART



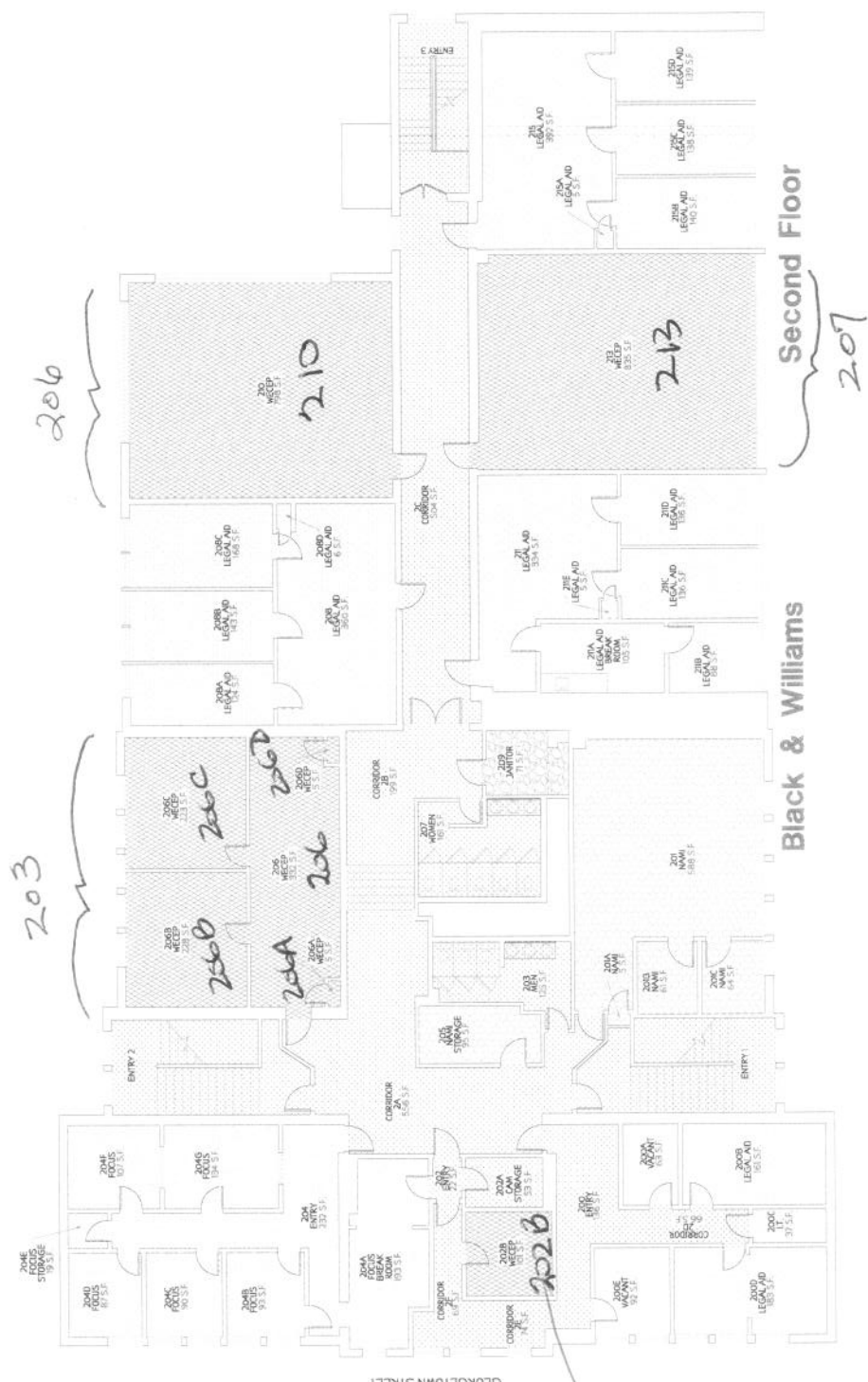
**West End Community Empowerment Project of Lexington, Inc
2012 Projected Budget**

REVENUE:

Contributions, gifts, grants / similar amounts received	\$ 3,000.00
Program service revenue, including gov. fees / contracts	\$ 68,000.00
Membership dues (Board of Directors)	\$ 1,200.00
Fundraising events	\$ 3,000.00
Total Revenue	\$ 75,200.00
Less 3% vacancy loss	\$ (2,172.00)
	\$ 73,028.00

EXPENSES :

Bank fees, credit card payments, benevolence	\$ 4,150.00
Professional fees and other payments to independent contractors	\$ 26,920.00
Rent, maintenance, occupancy and utilities	\$ 15,773.28
Supplies / Equipment (Administration, food service & prog.)	\$ 4,192.91
Insurance (Van, liability & property)	\$ 5,100.00
Maintenance service & repair (equipment & Van)	\$ 2,056.00
Prog participants, staff/ BOD awards, incentives, field trip/admissions, food, educational support (software)/assessments, scholarships	\$ 4,500.00
Public relations (media announcements, banners, fliers, postage, etc.)	\$ 2,000.00
Travel (Program and staff)	\$ 3,151.16
Taxes (past w/h) payment arrangement	\$ 2,771.26
Van registration	\$ 73.71
Fundraising	\$ 1,000.00
Total Expenses	\$ 71,688.32
Excess of (deficit) of Revenue over Expenses	\$ 1,339.68



COLOR	TENANT	AREA
[Pattern]	WEST END COMMUNITY EMPLOYMENT PROGRAM	207 S.F.
[Pattern]	NATIONAL ALLIANCE FOR THE MENTALLY ILL (NAMI)	89 S.F.
[Pattern]	LEGAL AID OF THE BLUEGRASS	279 S.F.
[Pattern]	CAH	208 S.F.
[Pattern]	LEWISTON-FAYETTE COUNTY (FOCUS)	98 S.F.
[Pattern]	MAINTENANCE	71 S.F.
[Pattern]	VACANT	322 S.F.

Benno

Second Floor
207

Black & Williams

GEORGETOWN STREET

Internal Revenue Service
Director, EO Rulings & Agreements
P.O. Box 2508
Cincinnati, OH 45201

Department of the Treasury

Date: April 7, 2001

WEST END COMMUNITY EMPOWERMENT PROJECT OF
LEXINGTON INC
498 GEORGETOWN ST STE 203
LEXINGTON, KY 40508

Employer Identification Number:
31-1490216

Document Locator Number:
17053-090-95402-1

Toll Free Number: 877-829-5500

FAX Number: 513-263-3756

Acknowledgement of Your Request

We received your Form 8734, Support Schedule for Your Advance Ruling, or other information regarding your public support status. When communicating with us, please refer to the employer identification number and document locator number shown above.

Your tax exempt status under section 501(c)(3) of the Internal Revenue Code remains in effect.

What Happens Next?

The information you submitted was entered into our computer system at our processing center in Covington, Kentucky, and has been sent to our Cincinnati office for initial review. We approve some cases based on this review. If this is the case, you will receive a letter stating that you are a publicly supported organization.

If the review indicates that additional information or changes are necessary, your case will be assigned to an Exempt Organization Specialist in Cincinnati who will call or write you. We assign cases in the order we receive them.

If the additional information indicates that you meet one of the public support tests, you will receive a letter stating that you are a publicly supported organization. If the public support tests are not met, we will send you a letter re-classifying you as a private foundation. That letter will tell you why we believe you do not meet the public support tests, and will include a complete explanation of your appeal rights.

How long will this process take?

Normally, you may expect to hear from us within 120 days. If you do not, you may call our toll free number between the hours of 8 a.m. and 9:30 p.m. Eastern Time. Please have your identification numbers available so that we can identify your case. If you would rather write than call, please include a copy of this notice with your correspondence.



Commonwealth of Kentucky Cabinet for Health and Family Services

certifies that THE WEST END COMMUNITY EMPOWERMENT
PROJECT OF LEXINGTON, INC.

is authorized to operate SANKOFA UNIVERSITY
498 GEORGETOWN STREET, STE 206
LEXINGTON, KENTUCKY

License # 358981 Effective Dates October 19, 2011

Pursuant to KRS 199.892 to 199.898 and 199.990(4) and the regulations promulgated thereunder, until the 30th day of October of the year 2012, unless suspended or revoked for substantial violation of any of these regulations or applicable statutes. This license is not transferable and is limited to the above location and for the services indicated below.

Child Care Center

Type:	I
Capacity:	42
Services:	
Infant	N
Toddler	N
Ages 2 to school age	N
School age	Y
Non-Traditional Care	Y
Transportation	Y

Mary Reinle Begley
Mary Reinle Begley
Inspector General

Janie Miller
Janie Miller
Secretary



Is being renewed



PHILADELPHIA
INSURANCE COMPANIES

A Member of the Tokio Marine Group

One Bala Plaza, Suite 100
Bala Cynwyd, Pennsylvania 19004
610.617.7900 Fax 610.617.7940
PHLY.com

Philadelphia Indemnity Insurance Company
COMMON POLICY DECLARATIONS

Policy Number: PHPK721468

Named Insured and Mailing Address:
WEST END COMMUNITY EMPOWERMENT PROGR
498 Georgetown St Ste 203
Lexington, KY 40508-1163

Producer: 23129
Charity One Insurance Agency, Inc.
680 E. Alostia Blvd., Suite 211
Azusa, CA 91702

Policy Period From: 05/17/2011 **To:** 05/17/2012

at 12.01 A.M. Standard Time at your mailing
address shown above.

Business Description: Non Profit Organization

IN RETURN FOR THE PAYMENT OF THE PREMIUM, AND SUBJECT TO ALL THE TERMS OF THIS
POLICY, WE AGREE WITH YOU TO PROVIDE THE INSURANCE AS STATED IN THIS POLICY.

THIS POLICY CONSISTS OF THE FOLLOWING COVERAGE PARTS FOR WHICH A PREMIUM IS
INDICATED. THIS PREMIUM MAY BE SUBJECT TO ADJUSTMENT.

	PREMIUM
Commercial Property Coverage Part	167.97
Commercial General Liability Coverage Part	549.72
Commercial Crime Coverage Part	
Commercial Inland Marine Coverage Part	
Commercial Auto Coverage Part	186.28
Businessowners	
Workers Compensation	
Professional Liability	683.08
Total	\$ 1,587.05
Total Includes Fees and Surcharges (See Schedule Attached)	28.05
Total Includes Federal Terrorism Risk Insurance Act Coverage	4.00

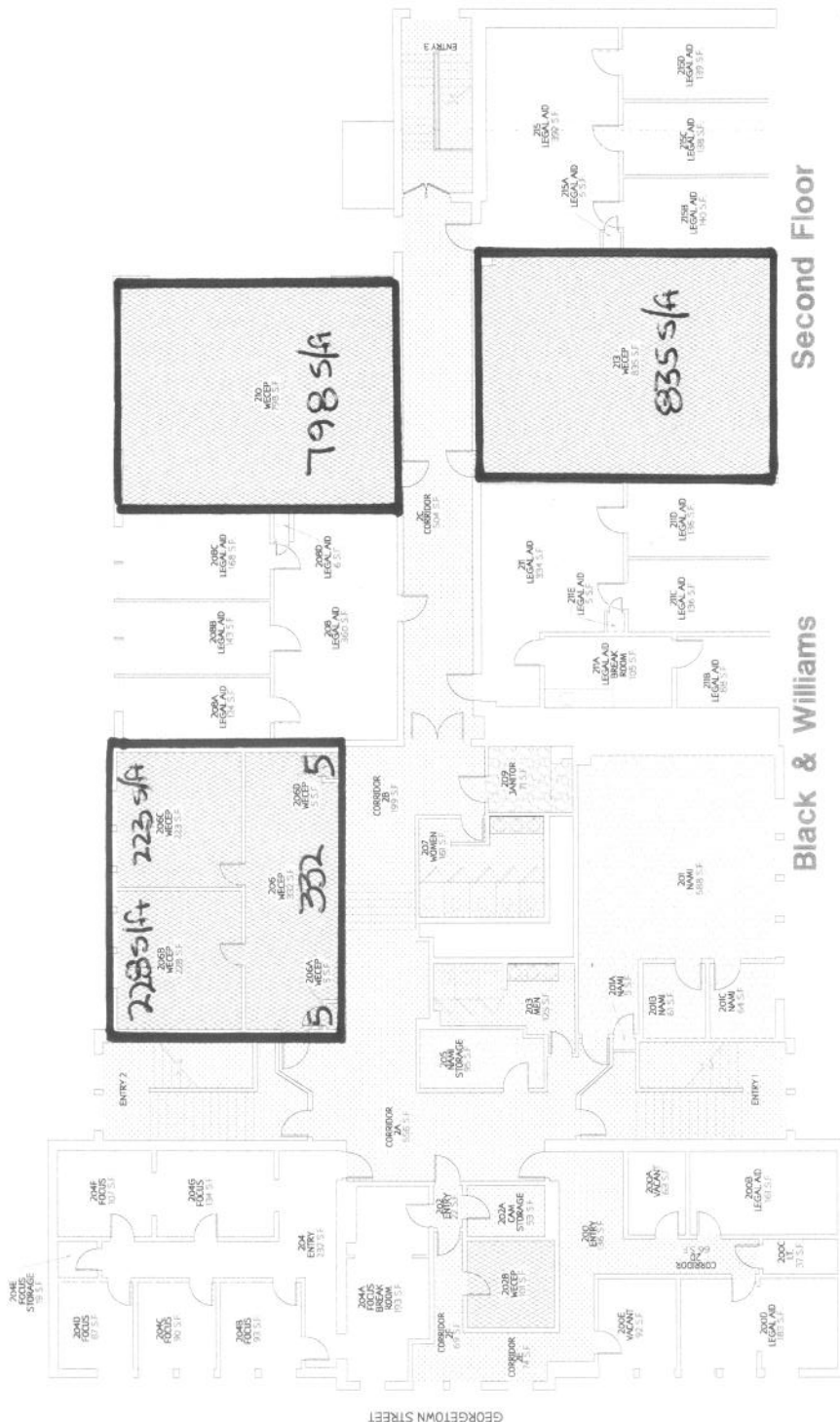
FORM (S) AND ENDORSEMENT (S) MADE A PART OF THIS POLICY AT THE TIME OF ISSUE
Refer To Forms Schedule

*Omits applicable Forms and Endorsements if shown in specific Coverage Part/Coverage Form Declarations

CPD- PIIC (01/07)

Countersignature Date

Christopher J. Maguire
Authorized Representative



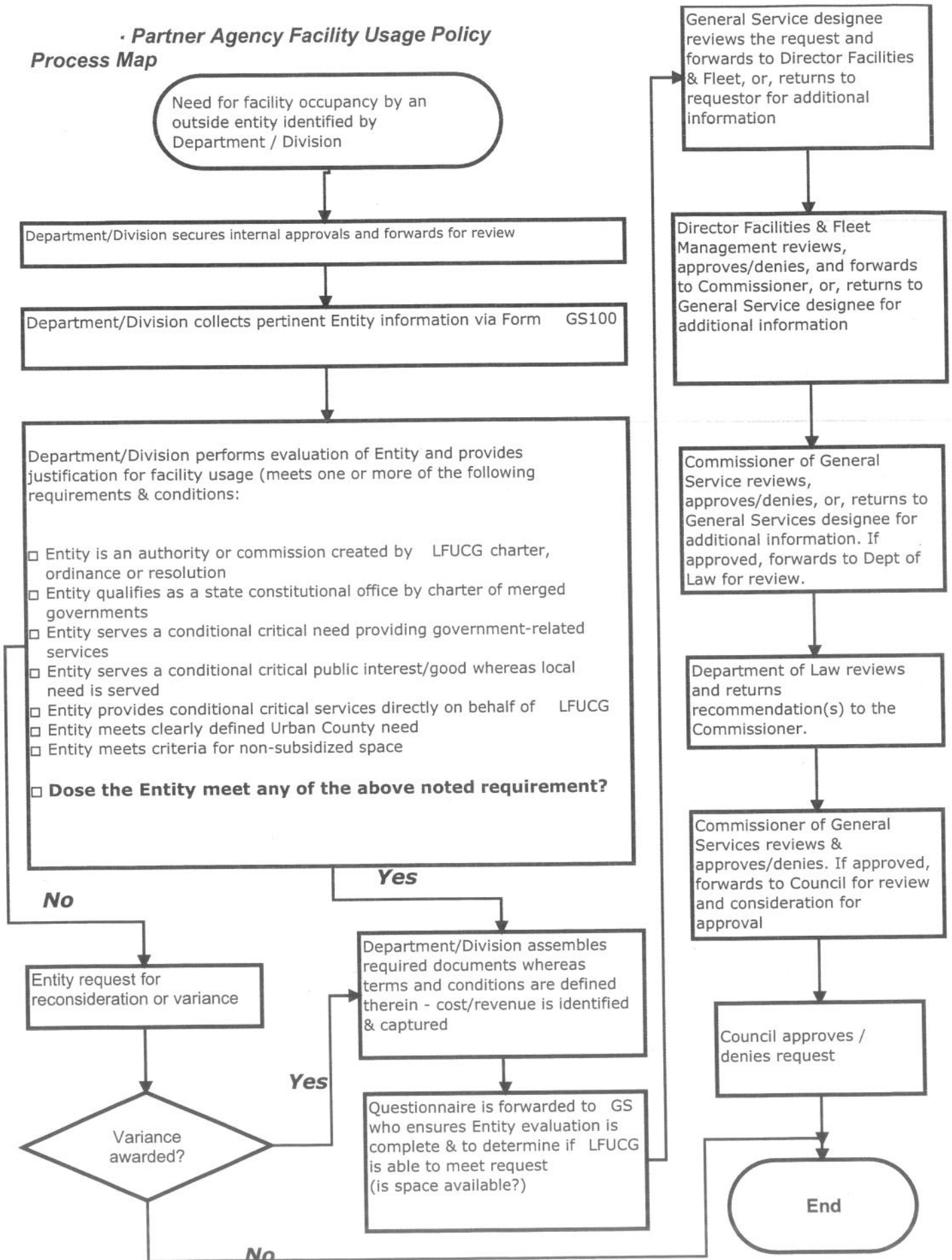
Second Floor

Black & Williams

COLOR	TENANT	AREA
	NEED FOR COMMUNITY ENVIRONMENT PROGRAM (MEET)	247 S.F.
	NATIONAL ALLIANCE FOR THE MENTALLY ILL (NAMI)	883 S.F.
	LEGAL AID OF THE BLUEGRASS	7796 S.F.
	NAMI	2090 S.F.
	EDMINGTON-PAYETTE COUNTY (BRIAN LEAGUE) (FOCUS)	985 S.F.
	MAINTENANCE	71 S.F.
	VACANT	3175 S.F.

GEORGETOWN STREET

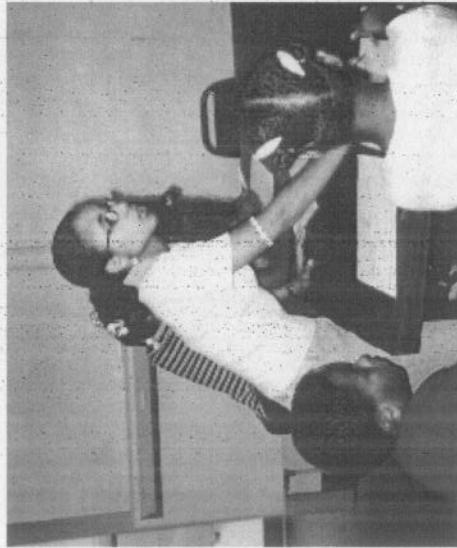
**Partner Agency Facility Usage Policy
Process Map**



Objectives

WECEP will increase academic achievements through (6) core concepts:

- 1) To provide a safe, caring, supervised place for youth,
- 2) To enhance students' ability to interact positively with peers and adults,
- 3) To motivate students to develop good citizenship and reduce behavioral problems,
- 4) To provide academic enhancement and enrichment,
- 5) To promote school attendance and discourage school drop out,
- 6) To assist students in reaching their goals through the strategic use of the arts.



The Curriculum is based on the scientific principles of the Search Institute of America and America's Promise

The Sankofa University also offers other camps during out of school time such as, No School Day, Spring Break (Violence Prevention), Summer (Jump Start, NbA and CEO) and Winter Break.

Program Fees

Sankofa University Youth Camps

(Price per Child-does not include field trips)

\$50.00 Registration Fee school-year & summer

(After-school / School Break Programs ages 5 - 12)

\$10.00 fee for ½ day (less than 5 hours)

\$20.00 fee for whole day (5 hours or more)

Sorry! No weekly payments received for the summer camp. Must be paid in full or in (3) easy payments.

(After-school / School Break Programs ages 13 - 17)

\$6.50 fee for ½ day (less than 5 hours)

\$13.00 fee for whole day (5 hours or more)

****Limited scholarships are available***

Program Outcome Measurements

Students' grades

Students' state scores

Students' attendance (School/WECEP)

Students' behavior report at school and home

Students' performances

School visits and conferences

Parent/Student/School surveys and questionnaires

Program Quality Self-Assessment Tool

Completion of service projects



Collaborative Partners

AmeriCorps*Vista

Asbury College

Barkham Inc.

Black & Williams Neighborhood Center

Fayette Co. Public Schools

4-H

Girl Scouts (Wilderness Road Council)

God's Pantry - Kids' Café

GTECH

Job Training Center

Lexington Children's Theatre

LexLinc

One Community One Voice

Partners for Youth

Tim Horton Children Foundation

Transylvania University

Tubby Smith Foundation

University of Kentucky

Veterans Administration (Hospital)

West End Community Empowerment Project of Lexington, INC

"JOINING HANDS ACROSS LEXINGTON TO MAKE A DIFFERENCE"

"Reclaiming the Invisible.....Achieving the Impossible"

PROGRAMS & OPPORTUNITIES

- SANKOFA UNIVERSITY SCHOOL-
AGE PROGRAMS
 - ADULT & PEER MENTORING
 - AFTER-SCHOOL
CREATIVE & PERFORMING
ARTS
 - NO SCHOOL DAY CAMP
 - SPRING & WINTER BREAK
CAMP
- SUMMER CAMP
- CAREER DEVELOPMENT
- COMMUNITY SERVICES
- EMPLOYMENT
- FAMILY SERVICES
- HEALTH SERVICES
- NUTRITION (KIDS CAFÉ)
- VOLUNTEERISM

The West End Community Empowerment project provides numerous activities for all ages. There are programs directed towards school age children, teens, and adults. WECEP focuses on promoting education and community involvement in hopes of developing healthier lifestyles.

"A caring community believing in the success of families by unleashing their potential for greatness"

Mission Statement

The mission of the West End Community Empowerment Project (WECEP) of Lexington, Inc. is to Motivate, Educate and Promote the involvement of community members. WECEP is founded on the belief that community involvement is paramount, as we work to meet the challenges of youth, family and community.

Vision

The vision of WECEP is to foster a vibrant engaged community that is actively engaged in: promoting family values, developing health and wellness awareness, maximizing educational opportunities, and encouraging civic and economic development.



Corporation History

The West End Community Empowerment Project (WECEP) of Lexington, Inc. is a "grass roots" project designed "by the people" and is family driven. WECEP was established January 5, 1995 and became incorporated in April 1996. The project received its 501c(3), non-profit status in August 1998.

Through 'door-to-door' surveys, focus groups and town-hall meetings, WECEP has provided the necessary opportunities to citizens to enhance their quality of life and improve conditions in the Lexington Community.



A Place to Call your Space.....
Future Solutions Now!