

EXHIBIT C

**PROPOSAL OF ENGINEERING SERVICES
AND RELATED MATTERS**

ECSI

STATEMENT OF QUALIFICATIONS

LEXINGTON FAYETTE URBAN COUNTY GOVERNMENT

FOR PROFESSIONAL ENGINEERING SERVICES

CATEGORY 3 (STORMWATER MANAGEMENT PROJECTS)

RFP #33-2012

340 South Broadway, Suite 200 ■ Lexington, KY 40508

Phone: 859.233.2103 ■ Fax: 859.259.3394

www.engrservices.com



ECSI LLC

CIVIL • ENVIRONMENTAL
MINING

340 South Broadway
Suite 200
Lexington, KY 40508-2553

www.engrservices.com

LEXINGTON, KY
PH: 859.233.2103
FAX: 859.259.3394

■

CORBIN, KY
PH: 606.526.6396
FAX: 606.526.6398

■

OWENSBORO, KY
PH: 270.683.8030
FAX: 270.683.8031

■

MARION, KY
PH: 270.967.9018

■

PIKEVILLE, KY
PH: 606.432.2443
FAX: 606.432.2486

■

WILLIAMSON, WV
PH: 304.235.1885
FAX: 304.235.1887

■

BLACKSBURG, VA
PH: 540.953.4019
FAX: 866.322.3641



ECSI an affiliate of
Ecology and Environment, Inc.
www.ee.com

November 12, 2012

Purchasing Director
Lexington-Fayette Urban County Government
Room 338, Government Center
200 East Main Street
Lexington, Kentucky 40507

RE: Request for Qualifications #33-2012
Engineering Services for Category 3 – Stormwater Management
ECSI Proposal #012-091

Selection Committee Members:

ECSI, LLC (ECSI) is pleased to present our qualifications statement to the LFUCG for professional engineering services related to Category 3 - Stormwater Management Projects.

ECSI, LLC, a Lexington-based firm, brings together a diverse group comprising of 55 professionals with technical and environmental planning backgrounds, including civil and environmental engineers, hydrogeologists, geologists, environmental scientists and biologists. ECSI was founded as a Lexington firm by our current President, Steve Gardner, PE, and has a 28-year history of providing various engineering and environmental services to clients throughout Kentucky and neighboring states.

Our team members have provided stormwater engineering design services for both public and private companies over the past 30 years. LFUCG has been a primary client of both Fred Eastridge, PE, PLS, and Douglas Mynear, PE, through their prior work experience. Our proposed team is dedicated to providing the highest level of service to LFUCG and providing solutions to design problems which are on schedule and within budget.

Primary ECSI team members on this project include Fred Eastridge, PE, PLS; Douglas Mynear, PE; Steve Gardner, PE; Karen Rose, EIT; and Luke Saladin, EIT. Additional engineers, environmental scientists, surveyors and technical personnel are available to be assigned to the project, as need and schedule dictate. We have designated Fred Eastridge as the Project Manager for this contract and will perform 100 percent of the work using our Lexington-based personnel.

Additionally, we have teamed with Abbie Jones Consulting for this project. Abbie Jones is pre-qualified as a DBE entity and will perform a minimum of 10-15% of the project work. Abbie Jones team members include Abbie Jones, PE, PLS; Tom Morrow, PLS and Jay Abbey. ECSI will utilize Abbie Jones primarily for field surveys.

In summary, we are very interested in this project and look forward to hearing back from you. We can be reached by email at feastridge@engrservices.com or dmynear@engrservices.com. Thank you for your consideration.

Sincerely,

Fred Eastridge, PE, PLS
Director of Civil Engineering

Douglas K. Mynear, PE, LEED AP
Vice President

Firm Qualifications

Firm Qualifications

Prime Firm Experience

ECSI, LLC, (ECSI) a Lexington-based firm, brings together a diverse group comprising 55 professionals with engineering, technical and environmental backgrounds; including civil/environmental engineers, geologists, environmental scientists, biologists and surveyors. ECSI has a 28-year history of providing various engineering and environmental services to clients throughout Kentucky and neighboring states.

Our key team members have provided site civil and storm engineering design services for both public and private companies throughout the region over the past 35 years. The three key ECSI personnel assigned to the project management team (Steve Gardner, PE, PS – Principal-in-Charge; Fred Eastridge, PE, PLS – Project Manager; and Doug Mynear, PE, LEED AP – Deputy Project Manager) each have in excess of 35-years of project management experience. Additionally, all three individuals are University of Kentucky College of Engineering graduates and have spent most, or all, of their careers in Lexington.

ECSI was initially formed by Steve Gardner in 1983 and has grown into one of the larger Lexington-based engineering firms, currently with 55 employees. Over the past four years with the staff additions of Fred Eastridge and Douglas Mynear, the firm has greatly expanded its expertise in the stormwater management arena. As mentioned above, both of these senior project managers have over 35-years of experience designing and managing urban stormwater projects throughout the central Kentucky area, including numerous projects with the LFUCG. With Fred serving as project manager and Doug serving as deputy project manager, our team offers demonstrated background knowledge and experience to successfully complete the design of stormwater projects assigned under this contract. In total, ECSI has six (6) Kentucky Licensed Engineers with four (4) PE's stationed here in the Lexington office. ECSI also has three (3) EIT's, four (4) geologists and numerous support personnel in the Lexington office.

The proposed ECSI team recently completed work on the Meadows-Northland-Arlington Neighborhood Improvements, Phase 5A for the LFUCG. This project was initially managed and designed by Fred Eastridge during his prior employment at SCB, and was revised and completed by the ECSI team. The project design calls for replacement of 1625 feet of storm sewer ranging in size from 15" to 42." The project bid opening was held in October, 2012.

Design Team Organization

Steve Gardner, PE, PS will serve as Principal-in-Charge for this project. As the firm's President/CEO, Steve is ultimately responsible for assuring adequate personnel and resources are devoted to complete projects on schedule and within budget. Steve is a well-respected professional in the local engineering community, evidenced by his having recently served on the Kentucky Board of Licensure, and his 2011 induction into the UK College of Engineering Hall of Distinction.

Fred Eastridge, PE, PLS has been assigned as ECSI's Project Manager for this project. Fred has worked in the Lexington consulting engineering community for the past 34 years providing site engineering services on a variety of public and private development projects. Fred's engineering expertise includes the performance and management of a wide range of stormwater management projects, including storm sewers, detention basins, water quality management, stormwater pollution prevention plans (SWPPP's), and the preparation of various FEMA map revisions. Part of Fred's recent experience includes project management of the Bluegrass-Aspendale housing project for the Lexington-Fayette Urban County Housing Authority, involving the design of one of the largest pervious paver projects in the region. Pervious pavers were proposed and implemented for parking lots throughout the 88-acre development to reduce the size of the three detention basins while satisfying outflow limitations from the area.

Douglas Mynear, PE, LEED AP, will serve as Deputy Project Manager and lead hydrologist for the project. Doug has worked in the Lexington area for his entire 35 year engineering career and has managed numerous stormwater study and design projects throughout the region. Included in this experience is the performance of FEMA Flood Insurance Studies for seven counties in central and western Kentucky; design of a wetland detention basin for the UK Arboretum; XPSWMM watershed model for the 10,000-acre West Hickman watershed; repairs of earthen dams and the design of numerous detention basins. Doug has experience in performing hydrology/hydraulic analysis using HEC-RAS, HEC-HMS, XPSWWW, SCS TR-55, SEDCAD, and HYDRAFLOW software programs. Doug's recent experience includes erosion and sediment control design measures for a planned \$6.2B copper mine project in Panama.

Karen Rose, EIT has over 18 years with the company and serves as permit manager, responsible for obtaining Kentucky Division of Water and US Army Corps of Engineer approval on projects. Karen will serve as one of the designers on the project, and has completed all four levels of Rosgen natural stream design.

Schedule and Budget Management

Budget and schedule management have always been critical to the success of a project. This rings even more true in today's market, with prices fluctuating widely as economic factors change, it is important to have an ongoing strategy to effectively manage both. ECSI recognizes this market dynamic and has implemented internal quality procedures to ensure our projects finish on time and on budget. Following selection for this contract, our first task will be to meet with the assigned LFUCG project management team to further discuss and refine the time for completion, and review of budgets allocated to projects. Along with refinement of the schedule and budget, this initial meeting will be used to fully define and agree on the scope of the projects. Scope creep is often primarily responsible for projects exceeding schedule and budget targets, and is best managed by early recognition and prompt attention.

Likewise, continual routine communications between the ECSI design and LFUCG management teams is critical to keeping the project on schedule and budget. Preparation of construction cost opinions at pre-defined design submittal stages will help in identifying potential project overruns. Being local we can ordinarily attend impromptu project meetings to review and discuss these concerns. Likewise, we can easily and efficiently provide construction oversight throughout the project construction phase using our local engineering staff.

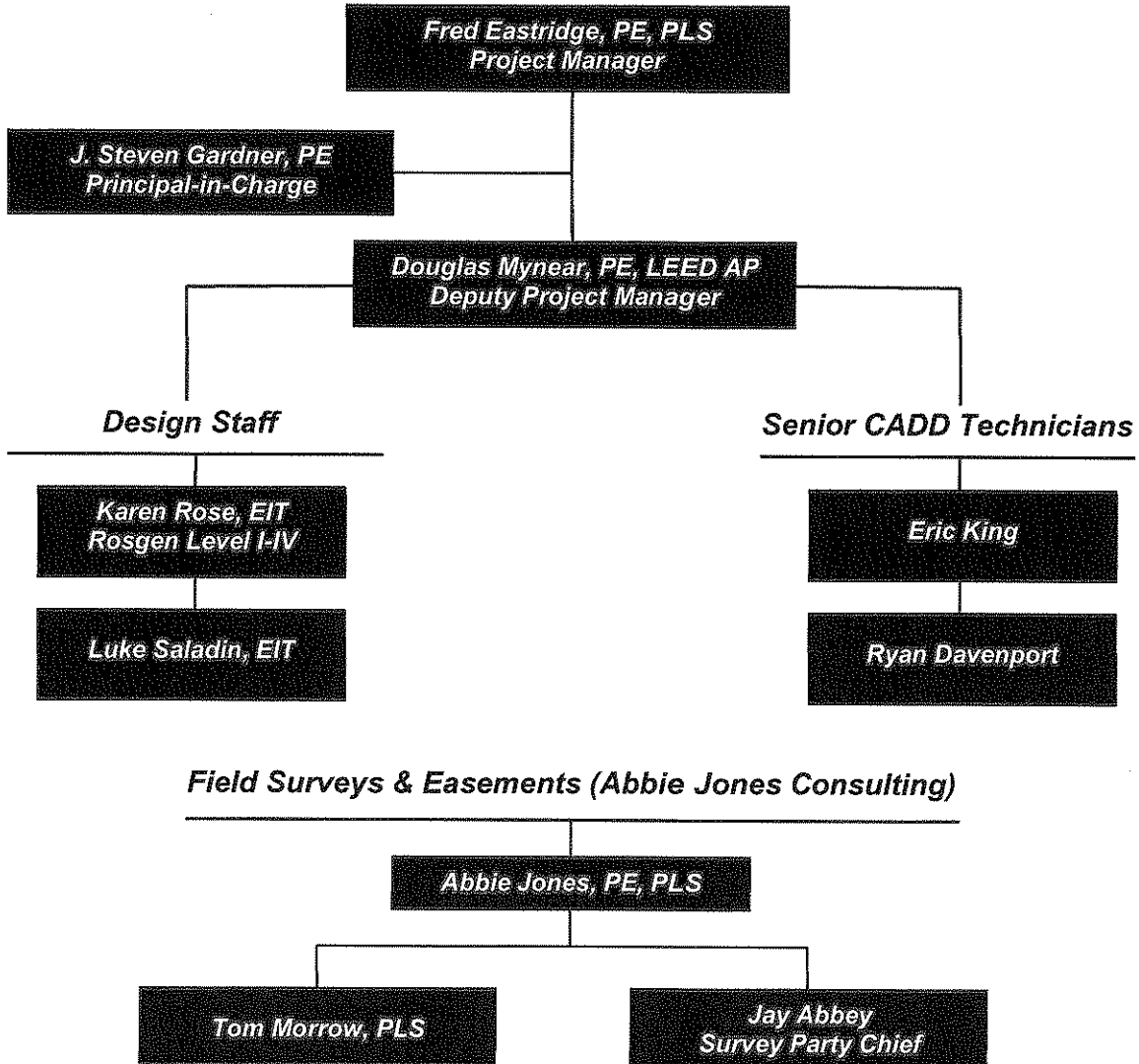
ECSI's project manager, Fred Eastridge, will be primarily responsible for schedule and budget control. He will be assisted in this effort by our internal administrative staff that includes clerical, bookkeeping/accounting, and project coordinator personnel. In particular, our internal project coordinator, Jeff Baird, is tasked with monitoring the budget and schedule on all projects within the Lexington office.

Quality documents result in accurate engineering cost estimates, construction bids within budget, limited change orders and projects that stay on schedule during construction. Our Quality Assurance process, which includes checklists for each phase and review by senior personnel, ensures this by generating reliable, consistent and accurate construction drawings. Internally, we maintain detailed schedules of all our resources and our current workload. This ensures the development and production of a project that stays on schedule. Manpower requirements are reviewed weekly to ensure the necessary skills and resources are available. As a result of these procedures and practices, ECSI has developed an outstanding track record for completing projects on time, within budget and with minimal change orders.

Based on our extensive project experience, we believe our team is the best qualified to assist the LFUCG with meeting their goal and completing stormwater management projects under this contract. We have the current assigned team personnel availability to commit the necessary resources to give this project specialized attention for timely completion.

Project Team

TEAM ORGANIZATION



Risk Management

We have proposed redundant capability on our team chart to ensure LFUCG that we can successfully manage the project in the unlikely event of personnel changes. Fred Eastridge, PE, PLS has been assigned as the Project Manager and Douglas Mynear, PE as the Deputy Project Manager. Should Fred become unavailable to serve as the PM, then Doug would readily assume those duties. Both Fred and Doug have over 35 years of project experience and both have successfully managed prior LFUCG projects. Being a relatively small office, our entire civil staff typically gets involved on most projects, so project knowledge would not be a problem.

Likewise, ECSI has numerous additional engineers and technical staff not listed on the proposed team chart, however, they could be assigned as the need arises.

Licenses:

Professional Engineer:

KY #13565, WV #0106223,

IN #11012101,

MO #2010029707,

OH #67181, IL #062-054708,

NCEES #26304

Professional Land Surveyor:

KY #2695

Education:

Bachelor of Science, Civil

Engineering - University of
Kentucky

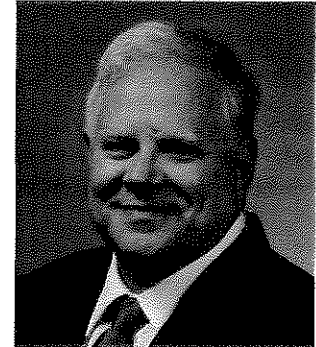
Bachelor of General Studies -

University of Kentucky

KYTC Traffic Impact Study

Course

Mr. Eastridge, a licensed Professional Engineer for over 33 years, has a variety of civil experience including road and trail design, site development, storm and sanitary sewer design, environmental mitigation, utility design, and surveying. During the course of his career he has worked extensively with the Kentucky Department of Transportation, the Kentucky Division of Water, and many Kentucky municipalities.



- Designed stormwater quality and quantity control facilities for a 385 acre watershed in Lexington.
- Designed of stormwater quality and quantity control facilities for a 254 acre watershed in Scott County.
- Design of over 100 miles of stormwater conveyance systems for private and local government developments throughout the state of Kentucky.
- Stormwater control/sewer lines- Bluegrass Aspendale
- New sewer lines, Walgreens at intersection of Versailles & Alexandria, Lexington
- Stormwater control vault for Central Baptist Hospital expansion
- Stormwater control measures - Jaggie Fox Industrial Park and Konner Woods Subdivision
- LFUCG's regional detention basins/stormwater control facility/new sewer lines for the Phelps and Richardson Properties
- Stormwater control facilities for the Autumn Ridge Subdivision
- Anniston/Wickland storm sewer and storm water control in the North Elkhorn Watershed.
- Bevins Regional stormwater control facility, Georgetown,
- Meadows - Northland Arlington Phase 5 stormwater control/sewer pipe rehabilitation/new pump station
- Georgetown Street revitalization stormwater control, Lexington
- Russell Cave Road redevelopment stormwater control, Lexington
- Wilson Street/Heartsbrook Lane/Catera Trace/Rosemary Street Stormwater Control, Lexington
- Tucker property stormwater design, Lexington
- Canewood Subdivision stormwater control/pump station improvements, Georgetown
- New pump station - Ward Hall / Shady Hills
- Multi-Family Housing Development - Lexington Housing Authority, Lexington
- Site planning & engineering design for redevelopment, stormwater control measures and storm sewer systems - Arbors Subdivision of Charlotte Court, Lexington

Waste Water and Potable Water Design

Sanitary Sewer, Force Main and Sanitary Pumping Station design for private and local government developments of Class "B" and Class "C" sanitary sewer pumping stations

Sanitary Sewer system rehabilitation studies and designs

Prepared sanitary rehabilitation plans in urban areas for the Frankfort Division of Sanitary Sewers in the City of Frankfort, Lexington-Fayette Urban County Government, and for the Lexington Housing Authority for Hope 6 Projects and area rehabilitation

Water line design for private and local government developments

Prepared water line design plans for private residential and commercial developments in Scott and Jessamine County.

Licenses:

Professional Engineer:
KY #11760, WV #9438
LEED Accredited
Professional:
U.S. Green Building Council

Education:

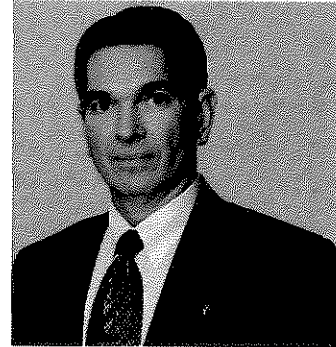
MS, Agricultural
Engineering/Urban
Hydrology - UK
BS, Agricultural Engineering -
UK

Training:

LEED Training Workshop
How to Write & Implement a
SWPPP to Meet NPDES
Requirements
Stormwater & Urban Water
Systems Modeling
XP-SWMM Training
Drainage Design Workshop

Mr. Myneer is experienced in hydrological/hydraulic studies, drainage design, site planning/design, highway/roadway design, water distribution, storm and sanitary sewers, wastewater pretreatment, and recreational facility design. His experience includes:

- Drainage investigation – Floyd Dr./Dartmoor Ct.
- Drainage improvement projects – West Glendover, Coventry Ct., Lexington; Drive-In Branch, Reeves Rd., Esther Ave, Parkwood/Triangle Drive Area, Louisville; Van Voorhis Family Housing Fort Knox, Kentucky
- Clay City high-flow diversion channel, Clay City, Kentucky
- Morgan Avenue drainage study and detention basin, Lexington, Kentucky
- North Pointe detention basin repairs, Lexington, Kentucky
- Gagel Avenue detention basin and drainage improvements, Louisville, Kentucky
- West Hickman Watershed stormwater modeling, Lexington, Kentucky
- Town Branch storm sewer investigation, Lexington, Kentucky
- Bowling Green/Warren County & Frankfort/Franklin County Flood Insurance Studies – Kentucky
- Moonbow Invest. Office Park erosion repair
- GE Lamp Plant demolition – SWPPP
- Settler's Trace Marina utilities (water, sewer, & electric), Taylorsville, Kentucky
- 30-inch sewer replacement, water supply systems repair, Fort Knox, Kentucky
- Blue Licks State Park utilities, Robertson County, Kentucky



Licenses:

Professional Engineer:
KY #11187, TN #13257,
WV #10319, VA #012458,
PA #PE074572, CO #42921
NCEES #32398

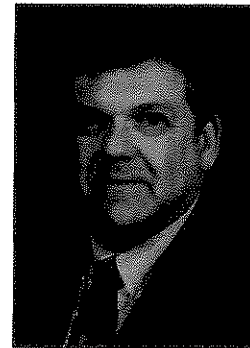
Professional Surveyor:
WV #1424

Education:

M.S., Mining Engineering,
University of Kentucky
B.S., Agricultural Engineering,
University of Kentucky
Environmental Systems
Certificate, University of
Kentucky

Mr. Gardner is a licensed Professional Engineer, graduate Mining Engineer and Agricultural Engineer. Providing professional environmental and mining engineering services for over 35 years, his consulting practice focuses on sensitive land use issues, reclamation liability, environmental, health and safety issues, mining and quarry operations, due diligence studies, and industrial heritage projects. Some of the projects that Mr. Gardner has directed include:

- Cumulative Impact Assessments (CIA) for Middle Fork Kentucky River Watershed; North Fork Kentucky Watershed; and Licking River Watershed. These three individual studies involved a ground-breaking approach to analyze the cumulative impacts of mining, logging, development, and other anthropogenic influences on the water quality and benthic health of streams within these HUC-8 watersheds. Mr. Gardner managed the projects, coordinated all subconsultants and devised the study methodologies.
- Nationwide Environmental Impact Statement addressing the impact of the proposed stream protection rule. ECSI worked on a team of consultants chosen by the Department of Interior, Office of Surface Mining, Reclamation and Enforcement on the preparation of the Draft EIS. ECSI provided expertise in surface hydrology, groundwater hydrology, mining, and miscellaneous environmental sections of the study. Mr. Gardner coordinated ECSI's efforts on the project.



KAREN ROSE, EIT

Project Engineer (EIT)

Licenses:

Engineering in Training:
KY#13020

Education:

Bachelor of Science, Mining
Engineering - University of
Kentucky

Rosgen Level I – Fluvial
Geomorphology for
Engineers

Rosgen Level II – River
Morphology & Applications

Rosgen Level III – River
Assessment & Monitoring

Rosgen Level IV – River
Restoration & Natural
Channel Design

Ms. Rose, Senior Project Manager, is responsible for the coordination of environmental permit applications for ECSI. She has completed several courses and seminars related to stability analysis, sediment control, blasting, computer-aided design, stream and ecosystem restoration plans.



Sediment Control Analysis/Design
Black Mountain, Kentucky

This project involved sediment control analysis and design for a proposed surface mine in an Outstanding Resources Watershed. Ms. Rose completed site studies, surveys, and designs of experimental sediment control structures to decrease/prevent any impact to the biological community from the mining activity.

Hydrologic/Sedimentologic Analysis and Sediment Ponds Design
Minera Panama SA – Cocle del Norte, Panama

This project involved the hydrologic and sedimentologic analysis and preliminary design of thirteen (13) independent sediment ponds at the port facility associated with the proposed Mina de Cobre Panama copper mine project located on the north coast of the Republic of Panama. Hydrologic analyses were conducted using two different design storms. Pre-development condition analyses were also conducted to allow comparison of the developed-condition pond discharge rates to existing. Ms. Rose designed the ponds and performed hydrologic and sedimentologic analysis of the ponds using SedCAD modeling software.

LUKE E. SALADIN, EIT

Project Engineer (EIT)

Licenses

Engineering in Training:
KY#14061

Education:

MS, Civil Engineering -
University of Kentucky

BS, Civil Engineering -
University of Kentucky

BA, English and Journalism -
University of Kentucky

Training:

AutoCAD

Mr. Saladin's research and writing has proven invaluable to many ECSI projects. He recently completed his MS in Civil Engineering and additionally holds a Bachelor of Arts degree in English and Journalism. He has conducted extensive research and written about major civil developments and aging storm and sewer systems in Northern Kentucky.



Meadows-Northland-Arlington Neighborhood Improvements, Phase 5A
Lexington, Kentucky

Mr. Saladin recently assisted on the redesign of the Meadows-Northland-Arlington Phase 5A Neighborhood Improvements Project for the Lexington-Fayette Urban County Government; a project that involved street, sidewalk, sanitary and storm sewer renovations.

Education:

Central Kentucky Vocational
Technical School - Drafting
Lexington Community College
- General Studies

Mr. King is a CAD Specialist with ECSI. He is responsible for the mapping standards for ECSI and works with Project Managers to ensure timely completion of all AutoCAD work. Researching new GIS related mapping information and data as well as keeping base maps up to date for Kentucky and the surrounding states are also his responsibility. Mr. King works with and trains technical staff and student interns on CAD related mapping.

**Hydrologic/Sedimentologic Analysis & Sediment Ponds Design**

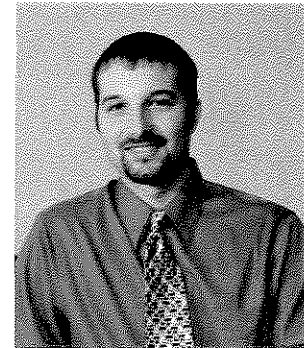
Minera Panama SA – Cocle del Norte, Panama

This project involved the hydrologic and sedimentologic analysis and preliminary design of thirteen (13) independent sediment ponds at the port facility associated with the proposed Mina de Cobre Panama copper mine project located on the north coast of the Republic of Panama. Hydrologic analyses were conducted using two different design storms. Pre-development condition analyses were also conducted to allow comparison of the developed-condition pond discharge rates to existing. Mr. King served as CAD technician preparing all CADD drawings in metric units. Documents were produced in both English and Spanish.

Education:

Bachelor in Construction
Management - Northern
Kentucky University
Associate in Applied Science
and Technology - Cincinnati
State Technical Community
College

Mr. Davenport is an Engineering Technician for ECSI and has served as Surveyor on multiple projects. He has an Associate's degree in Applied Science and Technology and an Advanced Surveying certificate from Cincinnati State Technical Community College. He also has a Bachelor's degree in Construction Management from Northern Kentucky University.



Mr. Davenport's prior experience includes construction layouts in residential and commercial, subdivision layouts, storm water layouts, sanitary sewer layouts, boundary surveys, topographic surveys, ALTA surveys, mortgage surveys, courthouse research, and map preparation. He is well versed in AutoCAD software, Carlson software, Nikon total stations, Topcon total stations, Topcon GPS, Trimble GPS, Trimble robotics, Carlson Surveyor data collectors, TDS data collectors, and HP48 data collectors.

Ramsey Farm, Topography and Boundary Survey
Jessamine County, Kentucky

Ramsey Farm was surveyed for future subdivision development. The project required a high accuracy boundary/ topography surveys, and accurate utility locations such as overhead power lines, water lines, sewer lines, etc. Since this project was heavily wooded the boundary survey was achieved prior to the topography to obtain proper accuracy. Vital to this project's accuracy was the notation of the exact locations of multiple sinkholes.

Abbie Jones, PE, PLS
PRINCIPAL/PROJECT MANAGER
12 YEARS EXPERIENCE

EDUCATION

- ▶ Tennessee Technological University, Bachelor of Civil and Environmental Engineering, 2000

REGISTRATIONS OR CERTIFICATIONS

- ▶ Professional Land Surveyor (PLS) KY3963
- ▶ Professional Engineer (PE) KY26780
- ▶ Certified Floodplain Manager (CFM)
- ▶ Roadway Inspector (KPESC RI)

PUBLICATIONS & AWARDS

- ▶ Named 2011 KSPE Bluegrass Chapter Nominee for Kentucky Young Engineer of the Year
- ▶ Named Georgia Young Engineer of the Year 2005

PREVIOUS EMPLOYMENT

- ▶ 2009-2010 Nesbitt Engineering, Lexington, KY –Engineer and Surveyor
- ▶ 2008-2009 City of Hurst, TX – City Engineer and Floodplain Administrator.
- ▶ 2002-2008 Lowe Engineers, Atlanta, GA Engineer and Surveyor. 2008- Assigned as City Engineer to Milton, GA
- ▶ 2000-2002 Pond & Company, Atlanta, GA Engineer

Abbie has worked in the survey and engineering industry for over twelve years, and has a solid background in all aspects of survey, project conception, design and implementation with a strong reputation of solid performance and accountability. Originally from Tennessee, Ms. Jones married a Kentuckian while working in Georgia, where she was honored as the 2005 Young Engineer of the Year. The couple spent two years in Texas for his neuroscience fellowship before moving near his family in Kentucky. Ms. Jones has previously worked as a consultant as well as a City Engineer for two cities: Hurst, TX and Milton, GA. Ms. Jones holds active surveying and engineering licenses in multiple states.

FEMA MITIGATION PROJECT – UNIVERSITY OF KENTUCKY

Project surveyor for a floodplain mitigation design project. Phase 1 included approximately 10 acres, nearly 1000 linear feet of stream cross sections, 5 detention ponds, extensive utility locates, and 25 foot grid for the topographic survey.

AUTHOR FOR HIGHWAY DESIGN GUIDANCE MANUAL, KTC-KYTC.

Project manager for the HDGM manual update of survey chapters and related district training that is currently underway.

HOUSEHOLD HAZARDOUS WASTE FACILITY, LEXINGTON, KY

Project surveyor for one acre of critical infrastructure and topographic survey with very quick turnaround. Unique site features included avoidance of the fatalities impound yard when collecting manhole information, and a high volume dump truck route.

CALVARY BAPTIST CHURCH ALTA/ASCM SURVEY, LEXINGTON, KY

Project surveyor for six acres of 38 original platted lots in historic downtown. Extensive boundary research and field work were required for this urban campus. The details of each wall, numbered parking space, building use, and myriad of zoning were complex, but shown in a clear manner.

Tom Morrow, PLS
SURVEY PARTY CHIEF
30+ YEARS EXPERIENCE

EDUCATION

- ▶ Various Continuing Education Courses

Tom's previous experience as the owner of Morrow & Cobb and as a surveyor at Wheat & Ladenburger included boundary, subdivision, topographic, and farm surveys. Mr. Morrow is our key to Quality Assurance as the Senior Land Surveyor. His thorough reviews help us to prepare high quality deliverables to our clients.

Jay Abbey
SURVEY PARTY CHIEF
19 YEARS EXPERIENCE

EDUCATION

- ▶ NGS Certificates in Digital Leveling and also in Aeronautical Survey

Jay's previous experience at GRW, MCS, and EA Partners included boundary, highway, topographic, hydrographic, and control surveys covers the full spectrum of survey field work. Mr. Abbey is our key to keeping all of our equipment in good working order, and up to date. He is a problem solver and helps us think creatively when planning our survey jobs to be most efficient with the equipment.



List of Client References

November 5, 2012

Past Storm Water Management Client List (Category 3)-

1. LFUCG Division of Engineering – Bob Bayert, PE, PLS (859-263-3410)
bobb@lexingtonky.gov – **Meadows Phase 5A & 5B Block Grant Project**, replacement of existing storm sewer system (managed by Fred Eastridge while employed by SCB Architects)
2. LFUCG Division of Engineering – Andrew Grunwald, P.E. (859-263-3410)
agrunwald@lexingtonky.gov – **Revision to Meadows Phase 5A & 5B storm sewers** (managed by Fred Eastridge while employed by ECSI)
3. Lexington Housing Authority – Austin Sims, Executive Director (859-281-5060)
simma@lexha.org – **Bluegrass Aspendale Redevelopment**, Replacement of storm sewers (managed by Fred Eastridge while employed by SCB Architects)
4. LFUCG Division of Water Quality – Greg Lubeck, P.E. (859-258-3446)
glubeck@lexingtonky.gov – **Anniston-Wickland Capital Storm Water Project** – hydrology, preliminary and final design, construction administration for stormwater improvement project (managed by Fred Eastridge while employed by SCB Architects); **West Hickman Watershed Stormwater Model** – XPSWMM model development for 10,000-acre watershed (managed by Douglas Mynear while employed by Parsons Brinckerhoff); **West Glendover Drainage Improvements** – hydrology, preliminary and final design for wetland detention basin
5. Mammoth Cave National Park – Steve Kovar, Chief of Facilities Management (270-758-2180) steve_kovar@nps.gov - **Mitigate Cave Pollution from Parking Lot Runoff** – final design and construction administration for stormwater treatment chambers and filter systems (managed by Douglas Mynear while employed by Parsons Brinckerhoff)

List of Similar Design Projects

Projects for LFUCG RFQ#33-2012 Category 3 – Stormwater Management

- 1. Anniston/Wickland Capital Storm Water Project, Lexington, Kentucky** – The project consisted of storm drainage analysis, hydrology, preliminary design, final design, and construction cost opinion, permitting and construction management for the Anniston/Wickland Area in Lexington. This project analyzed methods of providing relief to the property owners resulting from over 25 years of flooding. The study analyzed causes for the flooding and recommended solutions to provide relieve from flooding in the 25yr storm event. A challenge of the design was the area involved karst substrate and the primary outlet consisted of sinkholes located at the low end of the drainage system at Anniston Drive. These openings needed to be regularly cleaned and maintained free of debris and trash. The goals of the design were to provide adequate storm water control for the 25yr storm event and to maintain water quality BMPs to keep sediment and debris out of the sinkholes. The recommended solution involved construction of three storm water control facilities and a size increase of the storm sewer system. Phase 2 of the project included the replacement of the 10" VCP sanitary sewer with a 12" DI sanitary sewer. Phase 2 of the project is currently in construction. Project bid amount - \$654,000.00. No change orders have been requested by the contractor or owner. (managed by Fred Eastridge while employed by SCB Architects)
- 2. Walhampton Storm Sewer and Drainage Study, Lexington, Kentucky** – The project consisted of watershed hydraulic study, capacity study of the existing storm sewer system; preparation of three proposed designs to relieve flooding in the area, and construction cost opinions. The project did not include preparation of construction plans. Construction cost opinion was \$1,100,000.00. (managed by Fred Eastridge while employed by SCB Architects)
- 3. Meadows – Northland – Arlington Neighborhood Improvements, Phase 5A, Lexington, Kentucky** – The project required a capacity analysis of the existing storm sewer design to carry the 25yr storm event. The existing storm sewer conveying storm runoff from Park View Avenue down to Morgan Avenue was undersized. The existing 24" storm sewer was increased in size to provide the necessary flow capacity to carry the 25yr storm event. The project replaced and constructed 1,625 feet of storm sewer ranging in size from 15" to 42." The project was bid October 22, 2012 - Storm sewer construction cost - \$588,965.65
- 4. Bluegrass Apendale Redevelopment, Lexington, Kentucky** – The project necessitated the demolition of the existing storm system and construction of a storm sewer system to serve the area; and the design of storm sewer control facilities for storm water quantity and quality. Providing storm water quantity and quality for this project presented a challenge due to the existing outfall lines for the storm sewer being very shallow and undersized. This situation prevented the project from utilizing conventional storm water quantity and quality control solutions. The project required the use of a very shallow and large storage capacity to accommodate the existing offsite storm sewer system. The proposed solution involved use of pervious pavers in all of the parking lots to provide the necessary storm water quantity and quality control at a very shallow depth. The project was bid in five phases with the total construction cost over \$1,800,000.00. (managed by Fred Eastridge while employed by SCB Architects)
- 5. West Hickman Watershed Stormwater Modeling, Lexington, Kentucky** - This project involved the performance of SWMM stormwater model for the West Hickman watershed - approx. 10,000 acres/4,045 hectares. Change orders and construction cost are not applicable to this project. (managed by Douglas Mynear while employed by Parsons Brinckerhoff)
- 6. Town Branch Storm Sewer Investigation, Lexington, Kentucky** - This project involved the performance of underground culvert system surveys, investigations, and mapping. Personally constructed hydraulic model of storm sewer system using Visual Hydro (SWMM modeling software) and provided system information in a format compatible with and for inclusion in city GIS system. Change orders and construction cost are not applicable to this project. (managed by Douglas Mynear while employed by Parsons Brinckerhoff)

7. **West Glendover Drainage Improvements, Lexington, Kentucky** - This project entailed a drainage study and preparation of construction documents for the West Glendover Drainage Improvements Project. This project was necessary due to flooding conditions in a residential area downstream of the LFUCG-University of Kentucky Arboretum. A unique aspect of the project was the involvement of various stakeholders in the selection of a preferred construction alternate. Major stakeholders included the University of Kentucky, LFUCG, The Arboretum Board, adjacent property owners and downstream property owners affected by the flooding conditions. Public involvement meetings were held with all interested stakeholders at the conceptual design stage and pre-final design stages. These meetings were held to bring all of the competing concerns into focus and to reach consensus on an alternative all of the groups could accept. Various design alternatives were presented at the conceptual design stage and, based on input from the stakeholders, a preferred alternate was selected and carried forward into the construction document preparation. The selected alternate involved the construction of all drainage improvements within the boundaries of the Arboretum. A series of three detention basins combined with large areas of native plantings were proposed to mitigate the drainage problems. Native planting areas upslope of the basins were recommended to increase infiltration and evapotranspiration of runoff before it reached the basins. The first and second basins were designed as small collection/infiltration ponds with rock spillway overflows. The third and largest basin was designed as a wetland detention basin with a lengthened flow path and permanent pool. All basins were planted with water tolerant native plantings to slow runoff and increase infiltration through virtue of their deep root systems. Project bid amount - \$469,853 (managed by Douglas Mynear while employed by Parsons Brinckerhoff)
8. **Mitigate Cave Pollution from Parking Lot Runoff, Mammoth Cave, Kentucky** - Mammoth Cave represents the longest known cave system and is believed to support the most diverse cave biota in the world, with more than 130 species of fauna, of which 14 species are found nowhere else. Some of these species were threatened by the heavy metals and oil associated with stormwater runoff from the several large parking lots serving the Park. In keeping with the stated mission of Mammoth Cave National Park and the National Park Service, the park management team proposed a project to address the treatment of stormwater runoff from the parking areas and to greatly reduce or eliminate the detrimental effects on the fragile cave ecosystems. Various alternatives were evaluated by an assigned Value Analysis Team and the most advantageous alternative was determined to be the installation of stormwater filtration systems manufactured by Stormwater Management, Inc. Stormwater treatment from six parking lots; visitor center, hotel/restaurant, Sunset Lodge, maintenance-operations center; gas station-camp store; and Sloans Pond; were to be included in the design. The visitor center and hotel-restaurant sites represent large areas and two systems were proposed for each. Runoff from the sites was evaluated and it was concluded that the systems should be designed to treat the flow from a 1-inch design storm. This volume exceeded the commonly used first-flush amount, but was not oversized just to handle a 10-year storm. The design recommended the incorporation of oil-grit separation units prior to the filtration systems as a means of reducing cyclic maintenance requirements. The filters typically became clogged with sediment and had to be replaced on a regular basis, an expensive and labor intensive process. However, the oil-grit pretreatment units can be cleaned with a pump truck at a much reduced cost. Although initially more expensive, these units should greatly extend the life of the filters and result in a lower life cycle cost. Construction Cost - \$1,200,000 (managed by Douglas Mynear while employed by Parsons Brinckerhoff)
9. **Rain Garden Way, Lexington, Kentucky** - Rain Garden Way Subdivision is a 16 unit single-family development funded by the Lexington Housing Authority and the Lexington-Fayette Urban Count Government to provide low cost housing to the local area. The engineering design challenge was the size of the site and accommodating 16 residences along with the stormwater control and water quality. The solution was to build the street with a large open area in the middle. In the open area a rain garden was constructed serving as a focal point with a pedestrian bridge to get from one side of the street to the other and as stormwater quantity and quality control. Pervious pavers were installed at the end radius of the street to provide additional stormwater quantity and quality control due to a public park being the property's neighbor. (managed by Fred Eastridge while employed by SCB Architects)

Local Office

Local Office Participation

ECSI, LLC will complete this project utilizing personnel located exclusively in our Lexington, Kentucky headquarters where we currently employ approximately 25 employees. ECSI was formed in 1983 by our current President/CEO, Steve Gardner, as a Lexington-based firm. During the past 28 years, ECSI has continually maintained a fully-staffed office in Lexington while expanding the firm's reach with branch offices in Pikeville, Corbin, Owensboro and Marion, Kentucky; South Williamson, West Virginia; and Blacksburg, Virginia.

Key ECSI personnel assigned to manage and complete projects under this contract have spent their entire professional careers working in Lexington. Fred Eastridge, Douglas Mynear and Steve Gardner each have over 35 years of engineering experience in work experience in Lexington, including numerous projects with the LFUCG.

Abbie Jones Consulting, our DBE partner, will also be operating out of their Lexington office. Abbie Jones consulting employs 5 employees, all located in their Lexington office.

Our percentage of local office utilization therefore totals 100% for each firm.

DBE Involvement

DBE Involvement

ECSI is teaming with Abbie Jones Consulting (AJC) for this contract. AJC is a Lexington-based DBE Professional Land Survey and Civil Engineering firm. ECSI, LLC will use AJC for all field surveys associated with this contract. ECSI currently estimates the field surveys will amount to approximately 10-15% of the overall contract amount.

AJC was formed in May 2011 with a vision to provide surveying, engineering, and training. This clear understanding of the end user drives both data collection methods and deliverables while providing precise data for engineers, GIS managers, and government officials. AJC's clear understanding how survey information will ultimately be used on project designs provides teammates and clients with on-time, within-budget solutions. AJC has been DBE certified by the Kentucky Transportation Cabinet; Tennessee Department of Transportation; Lexington and Louisville.

AJC fully understands land surveying techniques and is very knowledgeable of the Lexington Fayette Urban County area. Ms. Jones is co-author and project manager for the surveying training courses under development for each KYTC district office. AJC staff has extensive experience in Fayette County including two recent LFUCG surveys. Currently, AJC employs two licensed surveyors, one who is also an engineer, a senior party chief, an Engineer-In-Training, and a rod person. AJC uses VRS RTK technology connected to the KYCORS network when appropriate for quick yet accurate field work. Traditional methods for topography, leveling, staking, and other survey tasks are also part of AJC's capabilities. AJC crews are familiar with hydrographic surveying using a variety of techniques with traditional waders, kayaks, and shallow draft boats. AJC is very familiar with easements, property descriptions, boundary surveys, and ALTA/ACSM surveys. AJC staff works in both AutoCAD and Microstation platforms to meet the various needs of our agency clients.

AJC provides sustainable professional engineering. AJC staff has worked in multiple states and leverages the ideas and thorough knowledge of regulations to benefit our local clients. Additionally, AJC holds certifications in erosion control (KPESC-RI) and floodplain management (CFM).

Hourly Rates

ECSI, LLC and Abbie Jones Consulting

Statement of Hourly Rates

Classification

Principal	\$ 200/Hr
Project Manager	\$ 150/Hr
Deputy Project Manager (PE)	\$ 150/Hr
Project Engineers (EIT)	\$ 90/Hr
Engineering Technicians	\$ 70/Hr
Clerical	\$ 50/Hr
Two Man Survey Crew	\$ 112/Hr

Geotechnical Drilling Exploration on a Per Project Basis.

Direct Project Expenses:

Mileage \$ 0.55/Mi.

All Other Travel, Copies, Map Plots, Long Distance Telephone, Direct Project Supplies,
Postage/Delivery/Overnight, Photos, Etc. Actual Cost + 10%

Required Forms

Firm Submitting Proposal: ECSI, LLC

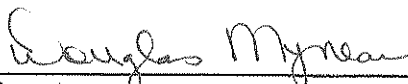
Complete Address: 340 S. Broadway, Ste. 200, Lexington, KY 40508
Street City Zip

Contact Name: Douglas Mynear Title: Vice President

Telephone Number: 859-233-2103 Fax Number: 859-259-3394

Email address: dmynear@engrservices.com

15. Authority to do Business: The Respondent must be a duly organized and authorized to do business under the laws of Kentucky. Respondent must be in good standing and have full legal capacity to provide the services specified under this Contract. The Respondent must have all necessary right and lawful authority to enter into this Contract for the full term hereof and that proper corporate or other action has been duly taken authorizing the Respondent to enter into this Contract. The Respondent will provide LFUCG with a copy of a corporate resolution authorizing this action and a letter from an attorney confirming that the proposer is authorized to do business in the State of Kentucky if requested. All proposals must be signed by a duly authorized officer, agent or employee of the Respondent.
16. Governing Law: This Contract shall be governed by and construed in accordance with the laws of the Commonwealth of Kentucky. In the event of any proceedings regarding this Contract, the Parties agree that the venue shall be the Fayette County Circuit Court or the U.S. District Court for the Eastern District of Kentucky, Lexington Division. All parties expressly consent to personal jurisdiction and venue in such Court for the limited and sole purpose of proceedings relating to this Contract or any rights or obligations arising thereunder. Service of process may be accomplished by following the procedures prescribed by law.
17. Ability to Meet Obligations: Respondent affirmatively states that there are no actions, suits or proceedings of any kind pending against Respondent or, to the knowledge of the Respondent, threatened against the Respondent before or by any court, governmental body or agency or other tribunal or authority which would, if adversely determined, have a materially adverse effect on the authority or ability of Respondent to perform its obligations under this Contract, or which question the legality, validity or enforceability hereof or thereof.
18. Contractor understands and agrees that its employees, agents, or subcontractors are not employees of LFUCG for any purpose whatsoever. Contractor is an independent contractor at all times during the performance of the services specified.
19. If any term or provision of this Contract shall be found to be illegal or unenforceable, the remainder of the contract shall remain in full force and such term or provision shall be deemed stricken.



Signature

11/09/12

Date

AFFIDAVIT

Comes the Affiant, Douglas Mynear, and after being first duly sworn, states under penalty of perjury as follows:

1. His/her name is Douglas Mynear and he/she is the individual submitting the proposal or is the authorized representative of ECSI, LLC, the entity submitting the proposal (hereinafter referred to as "Proposer").

2. Proposer will pay all taxes and fees, which are owed to the Lexington-Fayette Urban County Government at the time the proposal is submitted, prior to award of the contract and will maintain a "current" status in regard to those taxes and fees during the life of the contract.

3. Proposer will obtain a Lexington-Fayette Urban County Government business license, if applicable, prior to award of the contract.

4. Proposer has authorized the Division of Central Purchasing to verify the above-mentioned information with the Division of Revenue and to disclose to the Urban County Council that taxes and/or fees are delinquent or that a business license has not been obtained.

5. Proposer has not knowingly violated any provision of the campaign finance laws of the Commonwealth of Kentucky within the past five (5) years and the award of a contract to the Proposer will not violate any provision of the campaign finance laws of the Commonwealth.

6. Proposer has not knowingly violated any provision of Chapter 25 of the Lexington-Fayette Urban County Government Code of Ordinances, known as "Ethics Act."

Continued on next page

7. Proposer acknowledges that "knowingly" for purposes of this Affidavit means, with respect to conduct or to circumstances described by a statute or ordinance defining an offense, that a person is aware or should have been aware that his conduct is of that nature or that the circumstance exists.

Further, Affiant sayeth naught.

Douglas Mynear

STATE OF Kentucky

COUNTY OF Fayette

The foregoing instrument was subscribed, sworn to and acknowledged before me by Douglas Mynear on this the 9th day of November, 2012.

My Commission expires: 5/12/14

Harri Denise Rose
NOTARY PUBLIC, STATE AT LARGE

AFFIRMATIVE ACTION PLAN



ECSI, LLC
340 South Broadway, Suite 200
Lexington, KY 40508
Phone 859-233-2103
Fax 859-259-3394

**ECSI, LLC.
340 South Broadway, Suite 200
Lexington, KY 40508**

AAP Year Date: January, 2012 to December, 2012

Employer Identification Number: 27-3277647

**Affirmative Action Contact: J. Steven Gardner, PE, PS
President/CEO
ECSI, LLC
340 South Broadway, Suite 200
Lexington, KY 40508
Phone 859-233-2103
Fax 859-259-3394**

Signed:



**J. Steven Gardner, PE, PS
President/CEO**

Commitment to Equal Employment Opportunity (EEO)

It is the policy of ECSI, LLC (ECSI) to be an equal opportunity employer. In keeping with this policy, ECSI continues to recruit, hire, train and promote into all job levels the most qualified persons regardless of race, color, religion, gender, marital status, veteran status, disability, national origin, ancestry, age, family care leave status, sexual orientation, or any other characteristic protected by law. ECSI also administers all other personnel matters (such as compensation, benefits, transfers, layoffs, company-sponsored training, education, tuition assistance and social and recreational programs) in accordance with company policy. ECSI has developed and implemented procedures to ensure that its employees are not harassed because of their race, color, religion, gender, marital status, veteran status, disability, national origin, ancestry, age, family care leave status, sexual orientation, or any other characteristic protected by law.

Internal Communication

ECSI communicates its equal employment opportunity policy internally by:

- Including the policy in the Employee Handbook for ECSI, issuing a copy to each employee
- Conducting meetings with executive, management, and supervisory personnel to explain the intent of the policy, the president's intentions, and responsibilities for each management individual for effective implementation
- Explaining the policy thoroughly in employee orientation and any subsequent management training programs

Responsibility for Implementation

J. Steven Gardner, PE, PS, President/CEO of ECSI, has the overall responsibility to implement ECSI's equal opportunity policy. Coordination of responsibilities has been assigned to Susan Shaw, Human Resources for ECSI. In addition, Doug Mynear, PE, Vice President for ECSI's Lexington office; Mr. Andy Willis, PE, PS, Senior VP of ECSI's Eastern offices; Mr. Charlie Reeves, PE, Vice President of the Owensboro office; and Mr. Edmundo Laporte, PE, Manager of the Corbin Office, are responsible for coordination of responsibilities in their respective offices. Mr. Mynear, Mr. Willis, Mr. Laporte, and Mr. Reeves are responsible for identifying any problem areas, working with ECSI employees to arrive at solutions to problems, and keeping management informed of developments in the equal opportunity arena.

Compliance with Equal Employment Opportunity

ECSI does not discriminate on the basis of race, color, religion, gender, marital status, veteran status, disability, national origin, ancestry, age, family care leave status, sexual orientation, or any other characteristic protected by law. To this end, ECSI does the following:

- ECSI actively recruits the most qualified person for each job regardless of race, color, religion, gender, marital status, veteran status, disability, national origin, ancestry, age, family care leave status, sexual orientation, or any other characteristic protected by law. Advertisements for all positions are followed by the statement, "Equal Employment Opportunity."
- All written policies clearly state that all policies and practices apply to every employee on an equal basis.

- All employees have equal opportunity for any job for which they are qualified. No distinction is made with regard to race, color, religion, gender, marital status, veteran status, disability, national origin, ancestry, age, family care leave status, sexual orientation, or any other characteristic protected by law when decisions of opportunity, wages, hours, benefits, or other conditions of employment are made.

Equal Employment Opportunity Policy

In order to provide equal employment and advancement opportunities to all individuals, employment decisions at ECSI will be based on merit, qualifications, and abilities. ECSI does not discriminate in employment opportunities or practices on the basis of race, color, religion, gender, marital status, veteran status, disability, national origin, ancestry, age, family care leave status, sexual orientation, or any other characteristic protected by law.

ECSI will make reasonable accommodations for qualified individuals with known disabilities unless doing so would result in an undue hardship. ECSI prohibits harassment of any individual on the basis of any characteristic listed above. For information on ECSI's internal policies for addressing complaints of harassment, please refer to ECSI's Employee Handbook.

This policy governs all aspects of employment, including selection, job assignment, compensation, discipline, termination, and access to benefits and training.

Any employee with questions or concerns about any type of discrimination in the workplace is encouraged to bring the issue to the attention of their immediate supervisor. Employees can raise their concerns and make reports without fear of reprisal, harassment, intimidation, threats, coercion or discrimination because they:

1. file a complaint with ECSI or with federal, state, or local agencies,
2. assist or participate in any investigation, compliance review, hearing, or any other activity related to the administration of any federal, state or local equal employment opportunity or affirmative action statute,
3. oppose any act or practice made unlawful by federal, state or local law requiring equal employment opportunity or affirmative action, or
4. exercise any other employment right protected by federal, state or local law or its implementing regulations.

ECSI maintains a reporting system to respond to any specific complaints applicants or employees file with ECSI or the Equal Employment Opportunity office. Overall responsibility for the implementation of the equal employment opportunity program and for affirmative action compliance activities for ECSI is assigned to Doug Mynear, PE; Andy Willis, PE, PS; Edmundo Laporte, PE; and Charlie Reeves, PE who can be reached at (859) 233-2103.

Outreach Efforts

In order to locate individuals with the educational back ground and skills needed to work in the civil, environmental, and mining engineering as well as land surveying fields, ECSI employs a variety of outreach methods including:

1. ECSI works with the University of Kentucky's College of Engineering, The University of the Cumberlands, West Virginia University Institute of Technology, Virginia Polytechnic Institute and State University, and Pikeville College to identify, hire, and mentor interested engineering students throughout their college careers.
2. ECSI regularly contacts the following schools when the company has openings: UK, KCTCS, Pikeville College, The University of the Cumberlands, Morehead State, Mayo Technical, Murray State, Western Kentucky University, Virginia Polytechnic Institute and State University, and West Virginia University Institute of Technology.
3. ECSI attends all jobs fairs in the Pikeville area to locate available personnel for the Pikeville office and the Williamson, West Virginia office. These two offices have traditionally been the most difficult to staff due to limited availability in these areas.

Minority/Women Goals

Approximately 30% of those in the engineering field are females and 70% are males. At ECSI, 29% of our professional staff is female and 71% is male. With these percentages in mind, ECSI has been pleased with the number of available female professionals and has no specific goals in this area.

In prior years ECSI's minority representation has most often been found in the engineering functions of the company. When contacting the University Of Kentucky College Of Engineering, ECSI has been able to access a talented pool of individuals, many of whom are minorities attracted to the mathematic component of the engineering field. ECSI will continue to hire talented engineers from this program and will look for opportunities to hire minorities in the future.

It is anticipated that ECSI will have need for one additional engineer in the Pikeville office over the course of the coming year. ECSI will look for qualified minorities when hiring for this positions.

EQUAL OPPORTUNITY AGREEMENT

The Law

- Title VII of the Civil Rights Act of 1964 (amended 1972) states that it is unlawful for an employer to discriminate in employment because of race, color, religion, sex, age (40-70 years) or national origin.
- Executive Order No. 11246 on Nondiscrimination under Federal contract prohibits employment discrimination by contractor and sub-contractor doing business with the Federal Government or recipients of Federal funds. This order was later amended by Executive Order No. 11375 to prohibit discrimination on the basis of sex.
- Section 503 of the Rehabilitation Act of 1973 states:

The Contractor will not discriminate against any employee or applicant for employment because of physical or mental handicap.

- Section 2012 of the Vietnam Era Veterans Readjustment Act of 1973 requires Affirmative Action on behalf of disabled veterans and veterans of the Vietnam Era by contractors having Federal contracts.
- Section 206(A) of Executive Order 12086, Consolidation of Contract Compliance Functions for Equal Employment Opportunity, states:

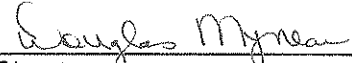
The Secretary of Labor may investigate the employment practices of any Government contractor or sub-contractor to determine whether or not the contractual provisions specified in Section 202 of this order have been violated.

The Lexington-Fayette Urban County Government practices Equal Opportunity in recruiting, hiring and promoting. It is the Government's intent to affirmatively provide employment opportunities for those individuals who have previously not been allowed to enter into the mainstream of society. Because of its importance to the local Government, this policy carries the full endorsement of the Mayor, Commissioners, Directors and all supervisory personnel. In following this commitment to Equal Employment Opportunity and because the Government is the benefactor of the Federal funds, it is both against the Urban County Government policy and illegal for the Government to let contracts to companies which knowingly or unknowingly practice discrimination in their employment practices. Violation of the above mentioned ordinances may cause a contract to be canceled and the contractors may be declared ineligible for future consideration.

Please sign this statement in the appropriate space acknowledging that you have read and understand the provisions contained herein. Return this document as part of your application packet.

Bidders

I/We agree to comply with the Civil Rights Laws listed above that govern employment rights of minorities, women, Vietnam veterans, handicapped and aged persons.



Signature

ECSI, LLC

Name of Business

WORKFORCE ANALYSIS FORM

Name of Organization: ECSL, LLC

Date: November 8, 2012

Categories	Total	White		Black		Other		Total	
		M	F	M	F	M	F	M	F
Administrators		3	9					3	9
Professionals		13	4			4		17	4
Superintendents									
Supervisors									
Foremen									
Technicians		18	2	1		1		20	2
Protective Service									
Para-Professionals								0	0
Office/Clerical								0	0
Skilled Craft									
Service/Maintenance									
Total:	0	34	15	1	0	5	0	40	15

Prepared by: Douglas Mynear, Vice-President
Name & Title

Attachment 1

Project Team Location(s)

Prime Consultant	Location (City, State)	Date Office Established	Total Number of Employees	No. of Employees expected to work on DWQ projects
Headquarters	Lexington, KY	1983	25	7
Local Office			SAME	SAME
PM Location	Lexington, KY			
Subconsultants Name:	Abbie Jones	2011		
Service Provided				
Headquarters	Lexington, KY		5	3
Local Office	Lexington, KY		SAME	SAME
Name:				
Service Provided				
Headquarters				
Local Office				
Name:				
Service Provided				
Headquarters				
Local Office				

Notes:

1. "Headquarters" refers to the corporate office that provides project support to the local office, if applicable. If support comes from multiple locations, use the blank spaces in the form to provide relevant information.
2. Listing of sub-consultants is optional and should only be provided if the prime consultant considers the sub-consultant(s) services to be essential to meeting the required qualifications. In this event, documentation from the subconsultant(s) shall be submitted in the SOQ that provides a commitment to be a part of the prime consultant's team in providing the stated services. In such cases, for the purpose of evaluating the proposals, committed sub-consultants will be considered to be part of the prime consultant's workforce. Prime consultants face potential disqualification from future work if DWQ finds that the identified sub-consultants are not being utilized to deliver assigned work products.



Lexington-Fayette Urban County Government
DEPARTMENT OF FINANCE & ADMINISTRATION

Jim Gray
Mayor

Jane C. Driskell
Commissioner

ADDENDUM #1

RFP Number: 33-2012

Date: November 6, 2012

Subject: RFO for Professional Engineering Services

Please address inquiries to:
Betty Landrum (859) 258-3320

TO ALL PROSPECTIVE BIDDERS:

Please be advised of the following clarifications to the above referenced RFP:

Questions	Answers
Footnote 2, page 7, paragraph 6, Selection Criteria, implies that private projects completed in accordance with the LFUCG Sanitary Sewer and Pump Station Manual and the LFUCG Stormwater Manual are equal in standing to those public projects completed under specific government contracts. Is that correct?	Each project will be evaluated on its individual merits. The proposer should use his/her discretion in selecting projects relating to the specific category that will best demonstrate the proposer's experience.
Can you provide examples of similar type projects that will be included in Category 4?	Examples of projects in Category 4 would be any type of trenchless pipeline and /or manhole rehabilitation projects, e.g., Cured In Place Pipeline Rehabilitation (CIPP), pipe bursting, sliplining, or manhole rehabilitation with various coatings or injection systems.
Do the one-page resumes for key project team members that are requested in the Project Team section count toward the specified page limit (i.e. are they to be counted in the 6 pages)?	Yes – Resumes should be one page maximum. Proposers should use their discretion in providing the information requested in six pages maximum.
From reviewing the minutes of the meeting, Mr. Martin made the statement encouraging teaming to maximize local participation. Then in answer to the first question he said that only the qualifications of the Prime would be scored. Then in answer to another question he said that relevant projects by subs would count. Since there seems to be some question here related to scoring of prime and not sub, the following question is posed. If a firm had a local office and wanted to be prime, but wanted to subcontract with a smaller local firm for an experienced	Yes -- Scoring of the Project Manager is maximized by project experience and being located locally (locally defined as being within the Bluegrass Area Development District boundaries).

wastewater project manager, would the Prime/Team receive the points for having a local project manager?	
In the meeting minutes the answer to the first question was only the qualifications of the prime would be scored, not the subs. If a small local firm wanted to be the prime and subcontract with a larger firm to supplement their qualifications, would that preclude the small prime from receiving the benefit of having the larger firm as a sub?	No -- The intent of the evaluation process will be to identify and rank the most qualified firm or team of firms.
Does the Division of Water Quality have a list of the 82 projects, and possibly a breakdown of the projects in each category, that are anticipated to be completed with this RFQ?	Yes. See attached list titled RMP Projects. The 82 projects are those listed in the Remedial Measures Plan. There will be other projects awarded under this contract that are not listed.
Could you provide what specific items that you will require responders to submit for an affirmative action plan for the RFP #33-2012? Management in our firm considers some information proprietary, however we want to be responsive and comply with the requirements of the RFP.	Please submit your current affirmative action plan with your response and identify the pages containing proprietary information as confidential and/or proprietary. Any confidential and/or proprietary information contained in your response should be clearly identified in both hard copy and electronic versions.
A question regarding <u>Contract 4 – Pipeline, manhole, inlet, and junction chamber rehabilitation projects</u> . Does the scope of work include providing flow monitoring, smoke testing, and dye testing services?	At present, no. DWQ reserves the right to compose or revise any Scope of Work necessary to meet its needs at any time during the duration of this contract.
It would seem that to accurately compare the mean deviation of hourly rates between firms proposing, that consultants should be expected to use a standard personnel classification system for hourly rates. Does LFUCG intend to issue such a list?	Hourly Rates will no longer be considered in the evaluation process (see attached REVISED scoring sheet; however hourly rates must be submitted for the specific job classifications on the attached form that will be used at time of contract negotiation.
As an office originally founded in Lexington over 40 years ago and subsequently acquired by another out of state firm, it seems unfair that we are only entitled to a score of 3.5 or 4.0 for the "Offices status and location of employees" category. Under this scenario, a recently established prime firm with a local headquarters, small work force, and no prior experience working with LFUCG could be awarded more points than a firm founded in Lexington that has continuously served LFUCG for over 40 years. Can additional consideration be given for length of service and/or longevity of office existence in Fayette County?	No – The proposer will be able to demonstrate and score points in other categories.
Can you release the list of anticipated Remedial Measures Plan projects and their estimated costs of construction?	Yes –see attachment pdf's (G3 RMP Implementation Plan & RMP Project Maps by Sewershed)

How will a firm be ranked if there is a joint venture?	DWQ will require that the Contract be executed with a single consultant. In the case of a team, the prime consultant must be identified and must execute the Contract. Joint Ventures will not be considered due to the contractual requirements.
George Woolwine (HDR) asked Mr. Martin to further define Category 2 and distinguish the work in Category 2 from Category 4. Mr. Martin said that Category 2 is dig and replace while Category 4 is rehabilitation for the purpose of reducing I&I (Inflow and Infiltration) in the collection system. Cole Mitcham (OBG) asked if the hourly rates within 15% were plus or minus, and if there was a prime that teamed how would we establish the mean rate?	Regarding the difference between Category Nos. 2 and 4, see the response to question No. 2 above. Regarding the question on hourly rates, see the response to question No. 9 above.

SPECIAL NOTE TO PROPOSER: Please note that the Selection Criteria (attachment 2 – RFP Scoring Sheet) have been revised – hourly rates have been removed and the points assigned have been changed.



Todd Slatin, Acting Director
Division of Central Purchasing

All other terms and conditions of the RFP and specifications are unchanged. This letter should be signed, attached to and become a part of your RFP.

COMPANY: ECST, LLC

ADDRESS: 340 S. Broadway, Ste. 200, Lexington, KY 40508

SIGNATURE OF PROPOSER: Douglas Myron

HEADQUARTERS

340 South Broadway
Suite 200
Lexington, KY 40508
Phone: 859.233.2103
Fax: 859.259.3394
www.engrservices.com

BRANCH OFFICES
KENTUCKY

1005 South Main Street
Suite 102
Corbin, KY 40701
Phone: 606.526.6396
Fax: 606.526.6398

312 W. Gum Street
Marion, KY 42064
Phone: 270-967-9019

719 East 18th Street
Owensboro, KY 42303
Phone: 270.683.8030
Fax: 270.683.8031

308 Hambley Boulevard
Pikeville, KY 41501
Phone: 606.432.2443
Fax: 606.432.2486

WEST VIRGINIA

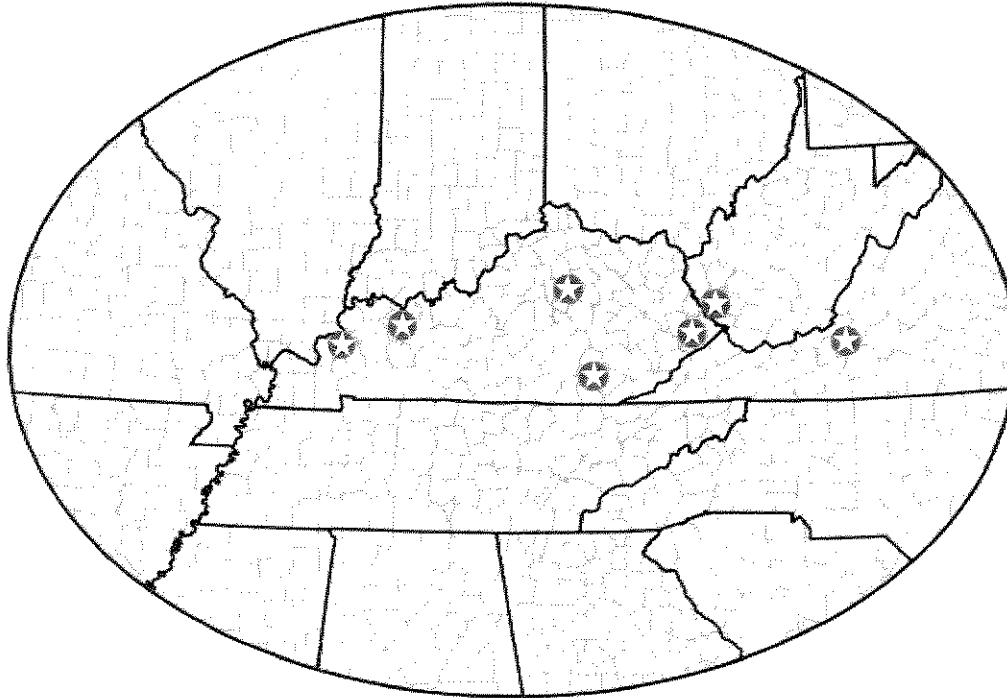
1628 W. Third Avenue
Williamson, WV 25661
Phone: 304.235.1885
Fax: 304.235.1887

VIRGINIA

1715 Pratt Dr., Suite 2600
Blacksburg, VA 24060
Phone: 540.953.4019
Fax: 866.322.3641

AFFILIATED COMPANY

Ecology and Environment, Inc.
www.ene.com



Mission Statement

"With problems there are always opportunities.

We view problems and ECSI's ability to solve them
a major asset. Looking for solutions that create value
and opportunity is our primary mission."

J. Steven Gardner, P.E.
President & CEO