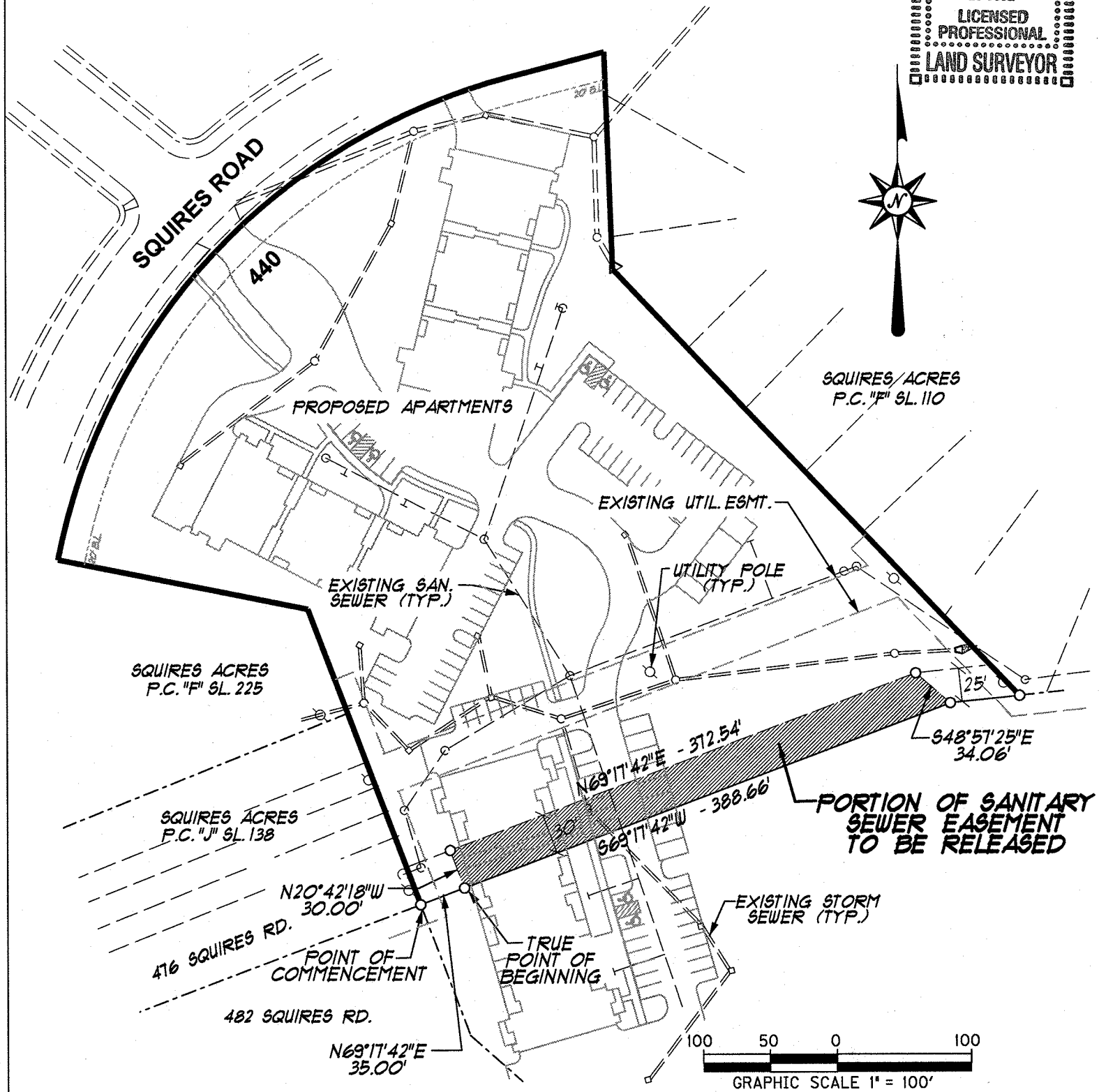
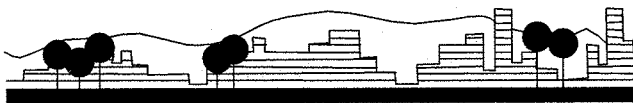


PARENT DOCUMENTS: PLAT CABINET "F", SLIDE 6
 PLAT CABINET "R", SLIDE 918

STATE OF KENTUCKY
 RICHARD B. NUNNERY
 LS-3992
 LICENSED
 PROFESSIONAL
 LAND SURVEYOR



EA Partners, PLLC



CIVIL ENGINEERS • LAND SURVEYORS • LANDSCAPE ARCHITECTS

3111 WALL STREET
 LEXINGTON, KENTUCKY 40513
 PHONE (859) 296-9889
 FACSIMILE (859) 296-9887

J:\1605\plats\san_esmt-exhibit.dgn

EXHIBIT "A"
SANITARY SEWER EASEMENT RELEASE
RML CONSTRUCTION, LLP
440 SQUIRES ROAD
LEXINGTON, FAYETTE COUNTY, KENTUCKY
MAY 2020