

9 - 1 - 1

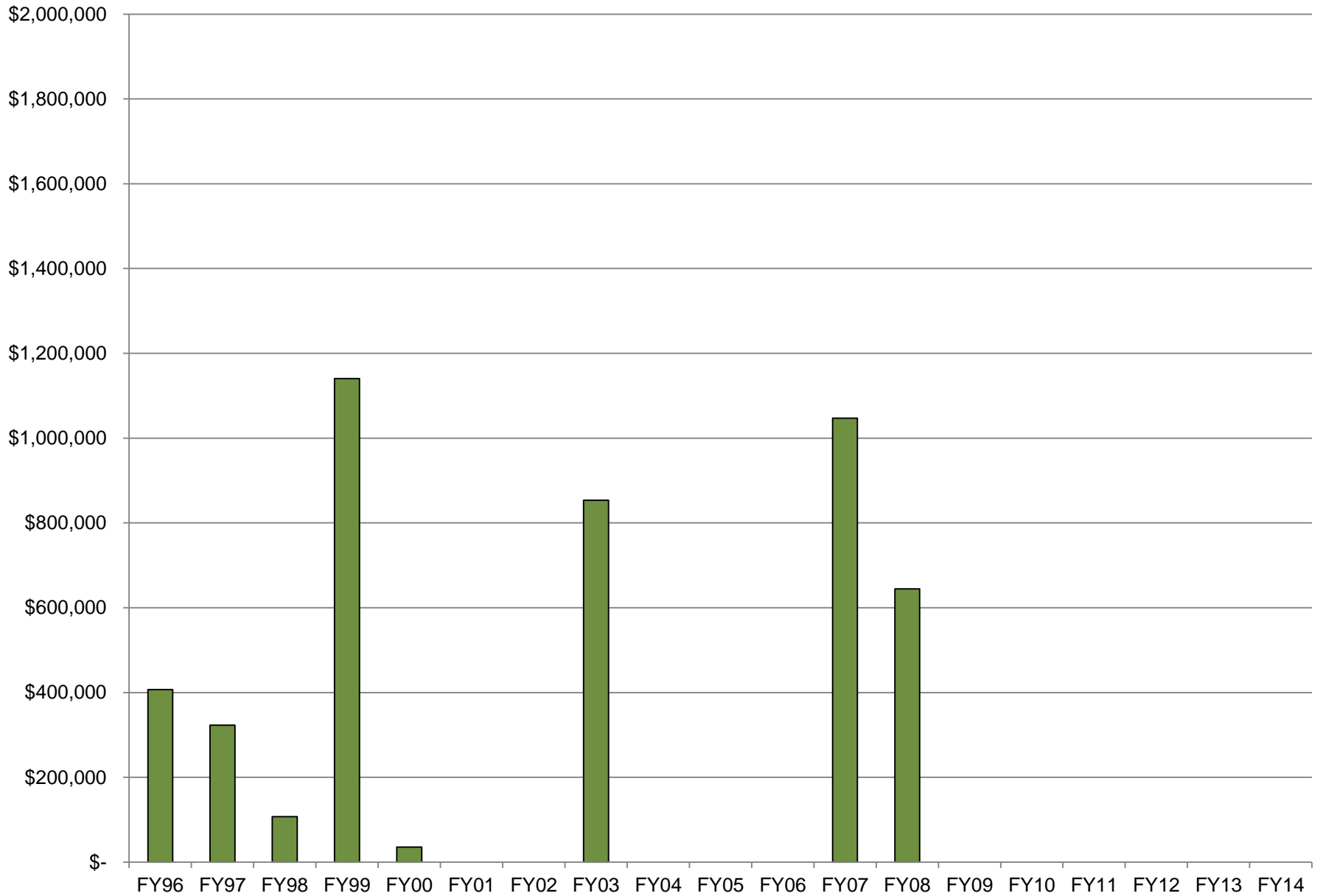
Funding of Services



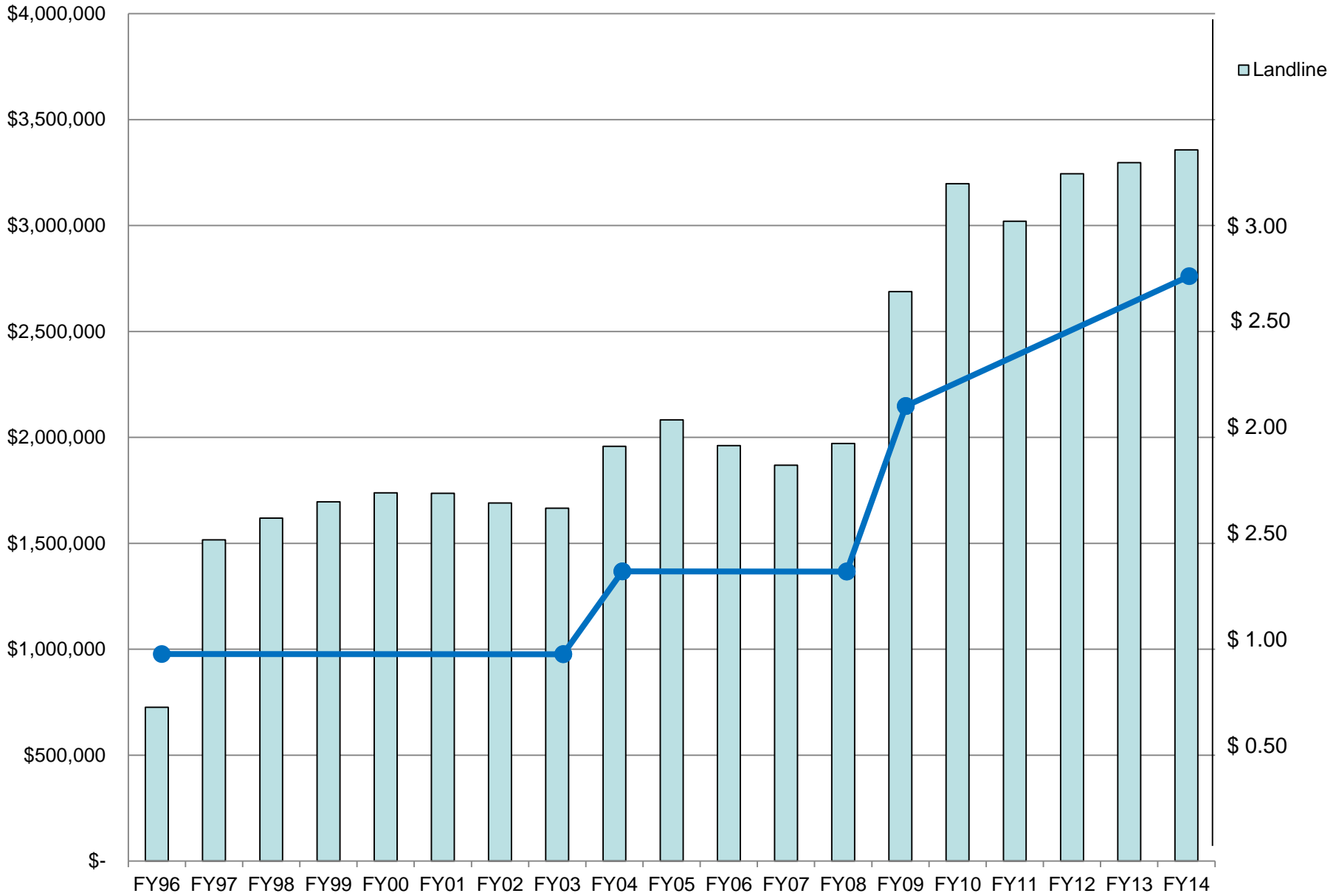
9-1-1 Funding Sources

- General Fund
- Landline Fees ▲
- Wireless Fees ▲
- Grants
- CKY911 Partnership

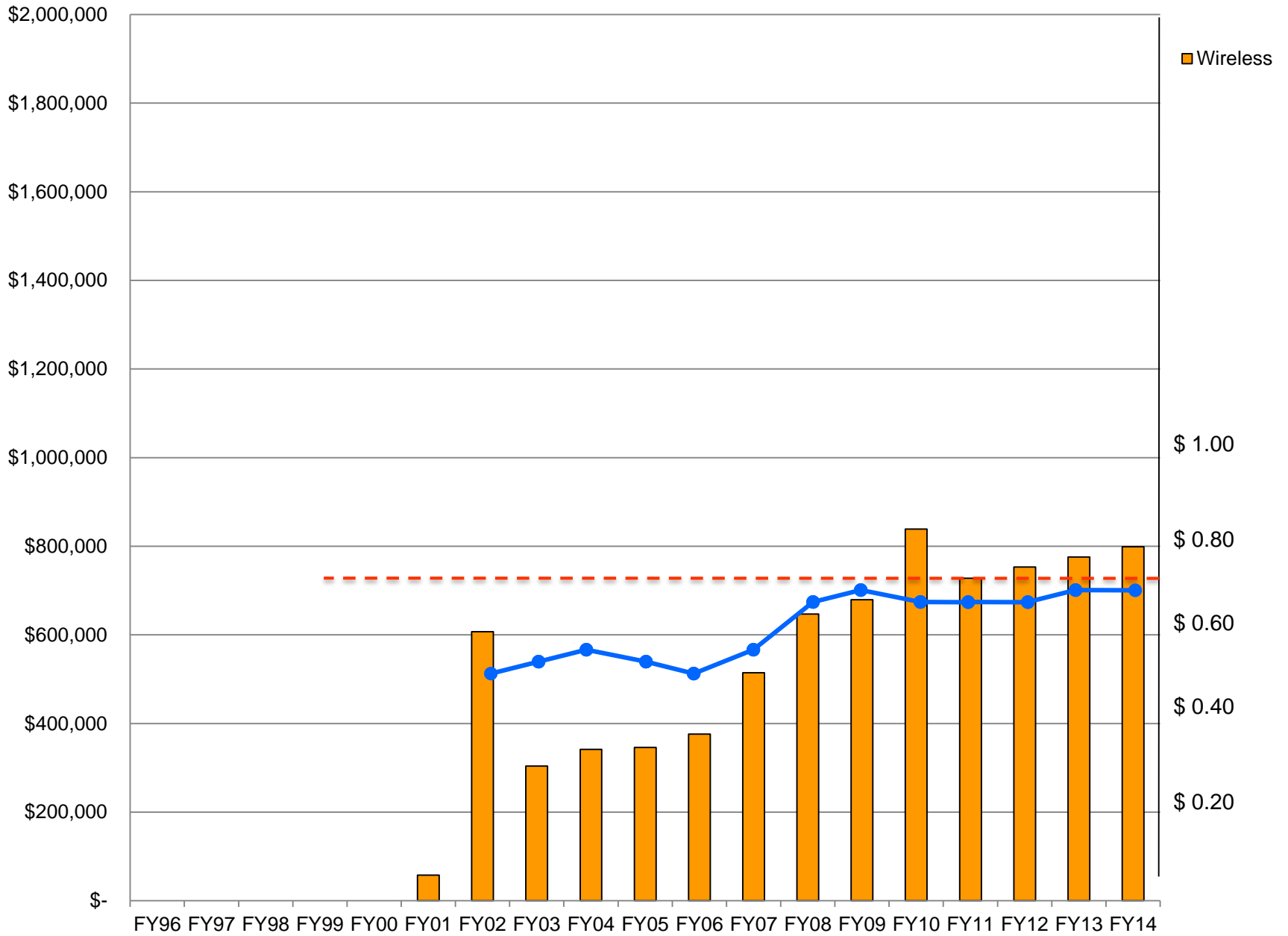
General Fund Supplement for 9-1-1 Expenses



Landline Revenue and Monthly Fee



Wireless Revenue and Monthly Fee



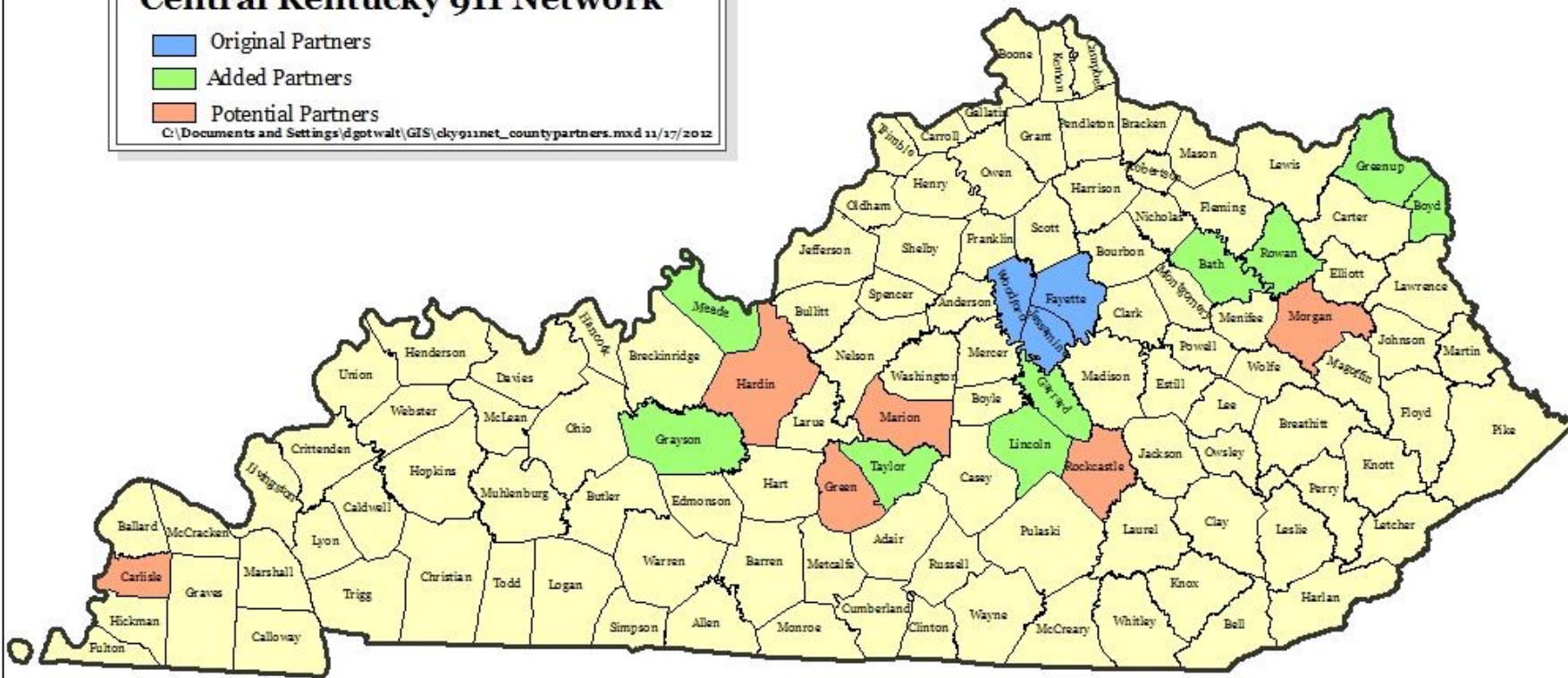
Central Kentucky 911 Network™

Original Partners

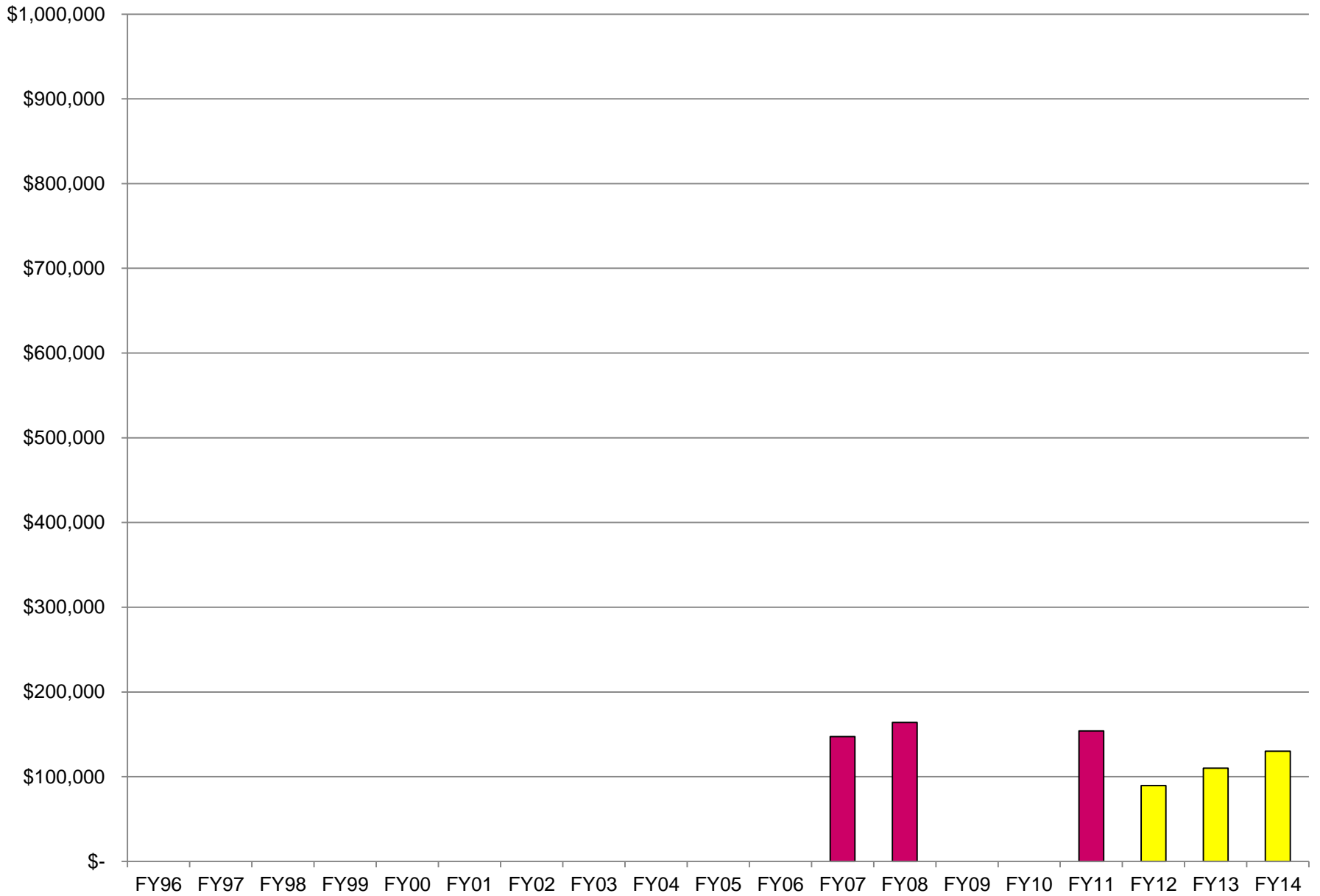
Added Partners

Potential Partners

C:\Documents and Settings\dgotwalt\GIS\cky911net_countypartners.mxd 11/17/2012

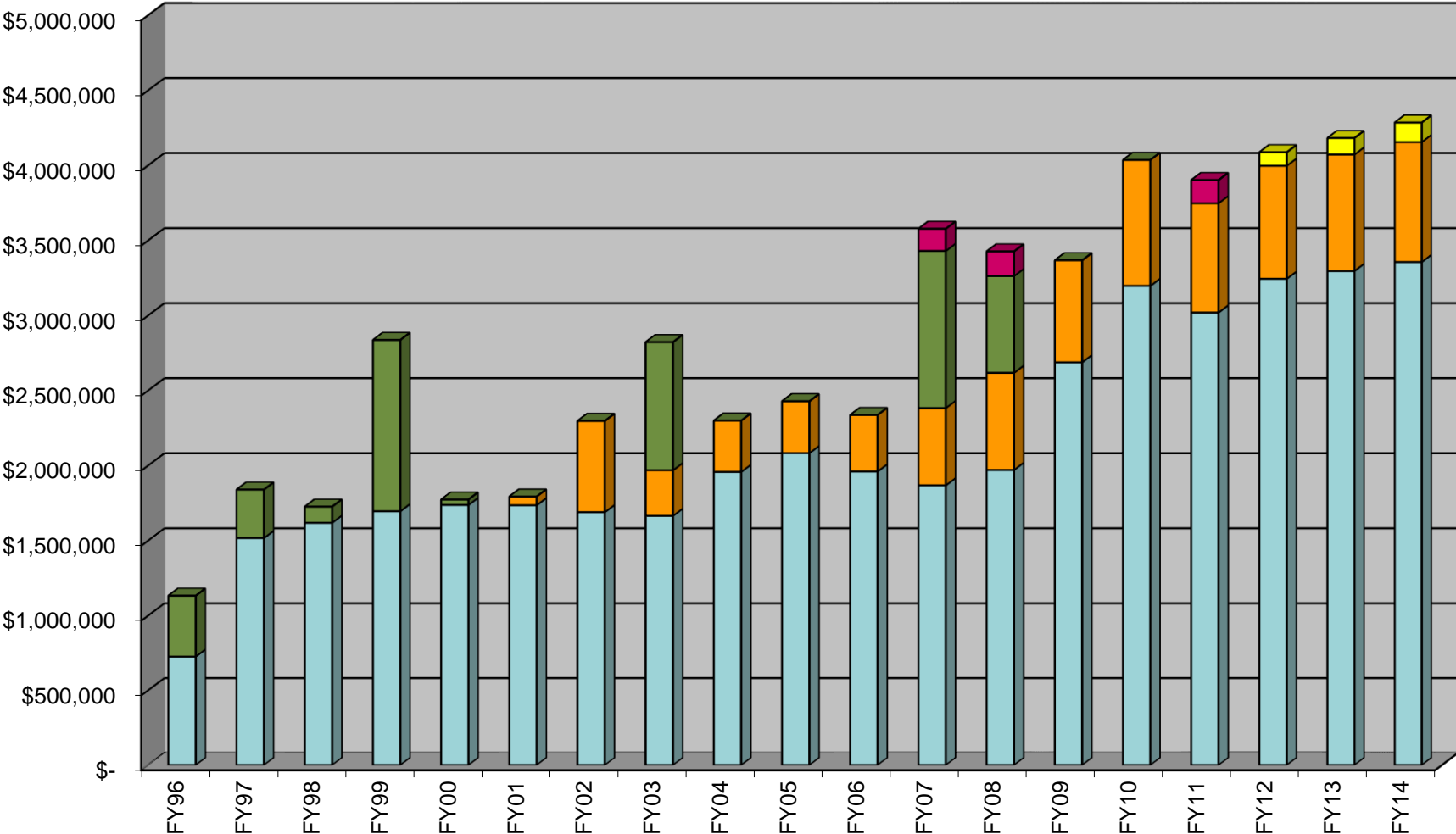


Grants and CKY911 Partnership



9-1-1 Funding Sources

■ Landline
 ■ Wireless
 ■ Gen Fund Supplement
 ■ Grants
 ■ CKY911 Partnership



Future Funding

- Expand CKY911 Partnership
 - Limited growth potential
- Additional Grants
 - Sporadic availability
- Wireless formula change or fee increase
 - Requires State Legislative changes
- Establish different local funding mechanism
 - Detailed review essential

Available local models in KY

- Flat rate per address (\$1.69/month)
 - 172,171 with 0.5% growth rate
- Flat rate per parcel (\$2.56/month)
 - 107,272 with 0.5% growth rate
- Percentage of assessed value (\$.013/\$100)
 - \$24.9 B with 0.8% growth rate
- Special District (tbd)
 - Undetermined (flat rate or percentage)

QUESTIONS ?

David Lucas, ENP

Director of Enhanced 9-1-1
Lexington-Fayette Urban County Government

859 258 3380

davidl@lexingtonky.gov