



Annual Road Resurfacing Process

Urban County Council Work Session
March 12, 2013



Department of Environmental Quality & Public Works



Road maintenance flow chart

Every LFUCG-maintained street is evaluated once every two years to document road surface conditions.

Surface Irregularities



Joint Deterioration



Block Cracking



Alligator Cracking



Base Failure



Rutting





Road maintenance flow chart

Road maintenance consists of a variety of functions
- Division of Streets & Roads



Road Resurfacing
Annual maintenance activity



Road Coring
Base failure forecasting



Crack seal
5 years post resurfacing



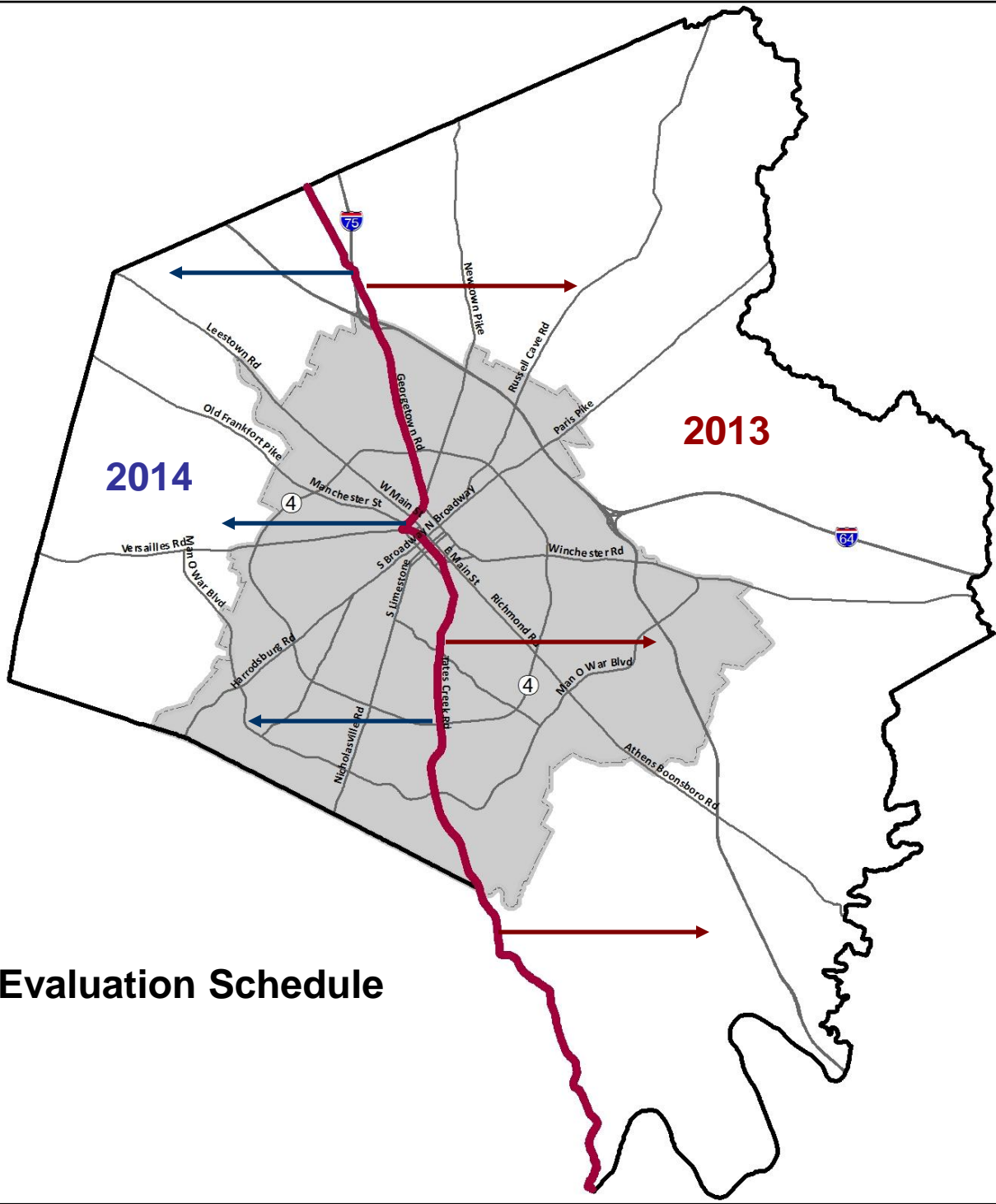
Base failure repair
Determined prior to resurfacing



Pot hole repair
Driven by Citizen Complaint



**Road Rejuvenation
& slurry seal**
County Maintenance



Pavement Evaluation Schedule



Road maintenance flow chart

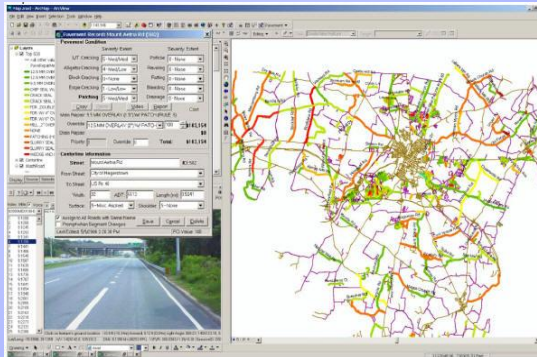
Pavement Management System updated



- Division of Engineering / DEQPW

The annual assessments are generally completed by July / August

Determine from the collected data, the total square footage of pavement rated 65 or less within the Urban Service Area.



- DEQPW



Road maintenance flow chart

From the calculated total square footage, within the Urban Service Area, we determine the percentage of pavement (rated 65 or less) within each Council District.

DISTRICT	PERCENT	BOND ALLOCATION	BUDGET ALLOCATION (FY13)
CD1	\$301,800	11%	\$1,364,000
CD2	\$117,635	4%	\$496,000
CD3	\$229,850	7%	\$868,000
CD4	\$193,235	6%	\$744,000
CD5	\$376,540	12%	\$1,488,000
CD6	\$244,225	8%	\$992,000
CD7	\$291,420	10%	\$1,240,000
CD8	\$188,525	6%	\$744,000
CD9	\$225,830	7%	\$868,000
CD10	\$507,790	16%	\$1,984,000
CD11	\$276,735	9%	\$1,116,000
CD12	\$126,390	4%	\$496,000

- DEQPW

***** NOTE:** This percentage equates to the percentage of monies (bonded or budgeted) each Council District receives for resurfacing to target roads in greatest need of repair. This process was approved by the Urban County Council in 2010.

Allocate resurfacing funds by the percentage of paving need per Council District.



- DEQPW

***** NOTE:** Beginning 2013, the allocation of resurfacing funds, bonded or budgeted, will be requisitioned within PeopleSoft, per Council District, to track invoices and monitor available funds.



Road maintenance flow chart

Provide Council a list of all roads (highlighting those with a rating of 65 and less) for final development of prioritization list.

The screenshot shows an Excel spreadsheet with the following columns: BLOCK, CL, LA, OR, MAP, RDC_DESC, LENGTH, PAV_DESC, PTYPE, P, BR, L, S, BR, C, CT, CC, AB, AM, AS, BR, RP, RV, RD, RL, UC, BARROW, PAW, PV. The spreadsheet contains numerous rows of road data, with some rows highlighted in yellow.

- DEQPW

Focus resurfacing funds on roads in greatest need of repair.



- Urban County Council and Division of Streets & Roads



Points of Interest

- New resurfacing contract (July 2012)
- GIS application for Pavement Management (2013)
- Pavement Management updates
 - Last updated July 2012 (Assessments will begin in May)
 - Bike lane modifications review / consideration
- Concrete vs. Asphalt
- \$3,080,000 allocated for resurfacing within the Urban Service Area – FY13
- \$700,000 allocated for County Road resurfacing / maintenance
- \$13,000,000 bonded for additional resurfacing – March 2013
- Percentage of fund allocation per Council District:

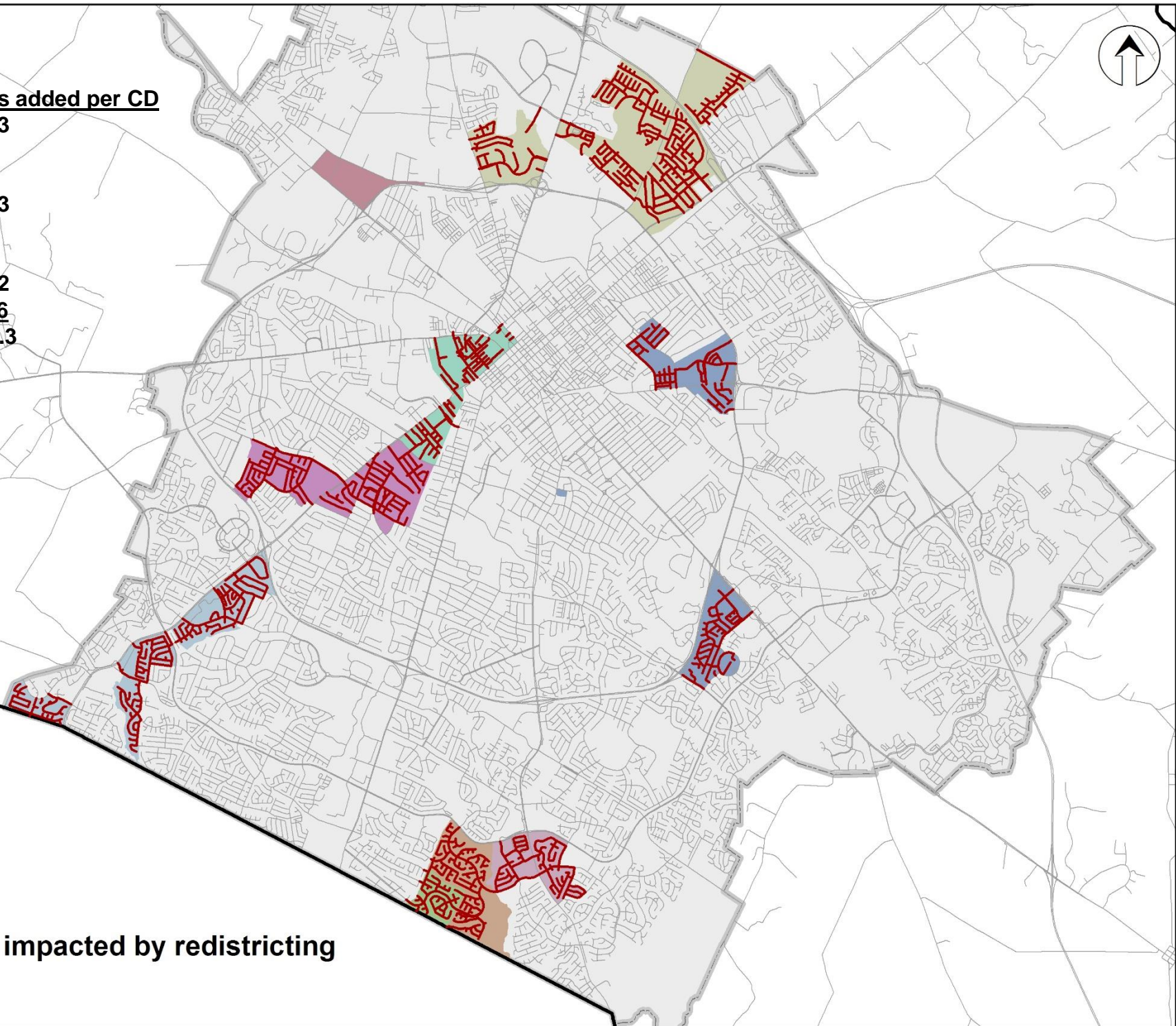
<u>DISTRICT</u>	<u>PERCENT</u>	<u>BOND ALLOCATION</u>	<u>BUDGET ALLOCATION (FY13)</u>
CD1	11%	\$1,364,000	\$301,800
CD2	4%	\$496,000	\$117,635
CD3	7%	\$868,000	\$229,850
CD4	6%	\$744,000	\$193,235
CD5	12%	\$1,488,000	\$376,540
CD6	8%	\$992,000	\$244,225
CD7	10%	\$1,240,000	\$291,420
CD8	6%	\$744,000	\$188,525
CD9	7%	\$868,000	\$225,830
CD10	16%	\$1,984,000	\$507,790
CD11	9%	\$1,116,000	\$276,735
CD12	4%	\$496,000	\$126,390

- Resurfacing estimates are based upon milling and resurfacing 1 ½ inches in depth
- Tiered contract price for asphalt is \$82.00 - \$104 depending on tonnage required



Road miles added per CD

CD1	30.3
CD3	9
CD4	9.2
CD5	14.3
CD8	7.9
CD9	3.8
CD10	17.2
CD11	16.6
Total	108.3



Streets impacted by redistricting



QUESTIONS?