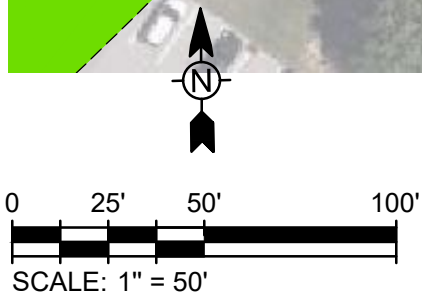
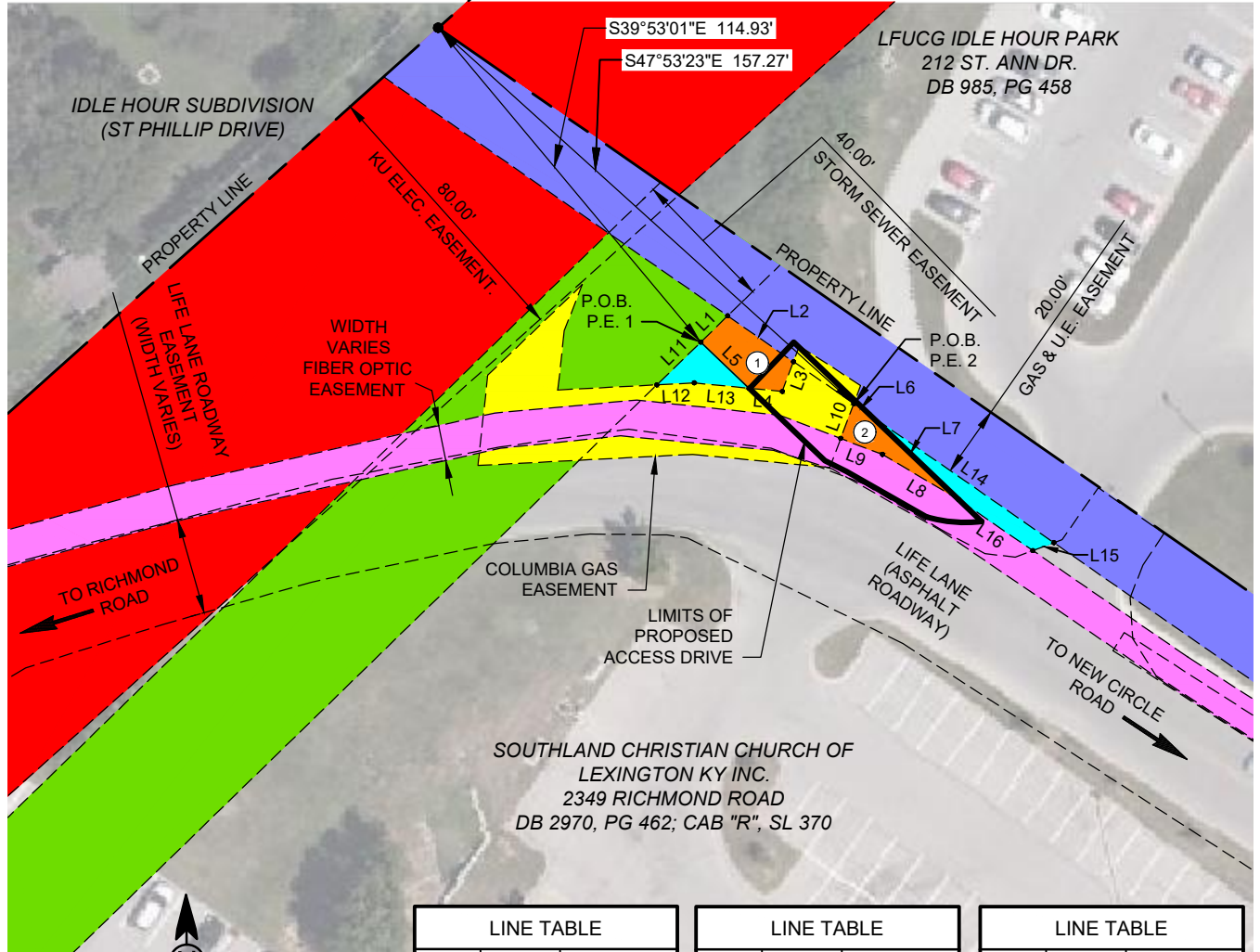


**BASIS OF BEARINGS**

1. LIFE LANE ROADWAY EASEMENT AND FIBER OPTIC EASEMENT ARE DERIVED FROM THE "GRANT OF EASEMENT" RECORDED AT THE FAYETTE CO. CLERK'S OFFICE IN DEED BOOK 3275, PAGE 264
2. COLUMBIA GAS EASEMENT IS DERIVED FROM THE "RIGHT OF WAY" RECORDED AT THE FAYETTE CO. CLERK'S OFFICE IN DEED BOOK 3007, PAGE 445
3. PROPERTY LINES, STORM SEWER EASEMENT, GAS & U.E. EASEMENT, AND KU ELECTRICAL EASEMENT WERE DERIVED FROM "CONSOLIDATION & EASEMENT MINOR AMENDED RECORD PLAT OF LEXINGTON MALL PROPERTY (SOUTHLAND CHRISTIAN CHURCH & LMP, LLC) 2349, 2399, & 2401 RICHMOND ROAD" BY STRAND ASSOCIATES, LOCATED AT THE FAYETTE CO. CLERK'S OFFICE IN CAB. R, SLIDE 370

- FIBER OPTIC ESMT.
- COLUMBIA GAS ESMT.
- GAS & U.E. ESMT.
- KU ELEC. ESMT.
- STORM SEWER ESMT.
- NEW PERM. ESMT. - 470 SF (GROSS) 470 SF (NET)
- TEMP. CONST. ESMT. 382 SF
- ① PERMANENT EASEMENT (P.E.) 1 288 SF
- ② PERMANENT EASEMENT (P.E.) 2 182 SF



LINE TABLE		
LINE #	LENGTH	BEARING
L1	10.55'	N 45°47'36" E
L2	22.50'	S 55°11'46" E
L3	8.91'	S 20°36'21" W
L4	9.40'	N 84°31'25" W
L5	18.72'	N 46°18'24" W
L6	5.31'	S 55°11'46" E

LINE TABLE		
LINE #	LENGTH	BEARING
L7	34.62'	S 46°21'10" E
L8	24.85'	N 59°21'42" W
L9	12.54'	N 69°03'18" W
L10	10.45'	N 20°36'21" E
L11	17.21'	S 45°47'36" W
L12	10.53'	N 87°03'15" E

LINE TABLE		
LINE #	LENGTH	BEARING
L13	15.43'	S 84°31'25" E
L14	63.07'	S 55°11'46" E
L15	6.31'	S 69°38'26" W
L16	25.22'	N 55°31'00" W

**TETRA TECH**  
 www.tetrattech.com  
 424 LEWIS HARGETT CIRCLE, SUITE 110  
 LEXINGTON, KY 40503  
 TEL. 859.223.8000 FAX 859.224.1025

STORM SEWER EASEMENT EXHIBIT ON THE PROPERTY OF  
 SOUTHLAND CHRISTIAN CHURCH OF LEXINGTON, KY, INC.  
**DEED BOOK NO. 2970**  
**PAGE 462**

PROJ: 200-11681-20002  
 DATE: 3/10/2021  
 DESN: RNR  
 EXHIBIT  
**AERIAL**

4/12/2021 10:14:18 AM - \\TTS005FS\PROJECTS\IER\11681-20002\CAD\ISHEETFILES\EX-A EASEMENT EXHIBIT.DWG - RATHFON, RYAN

Copyright: Tetra Tech

Bar Measures 1 inch