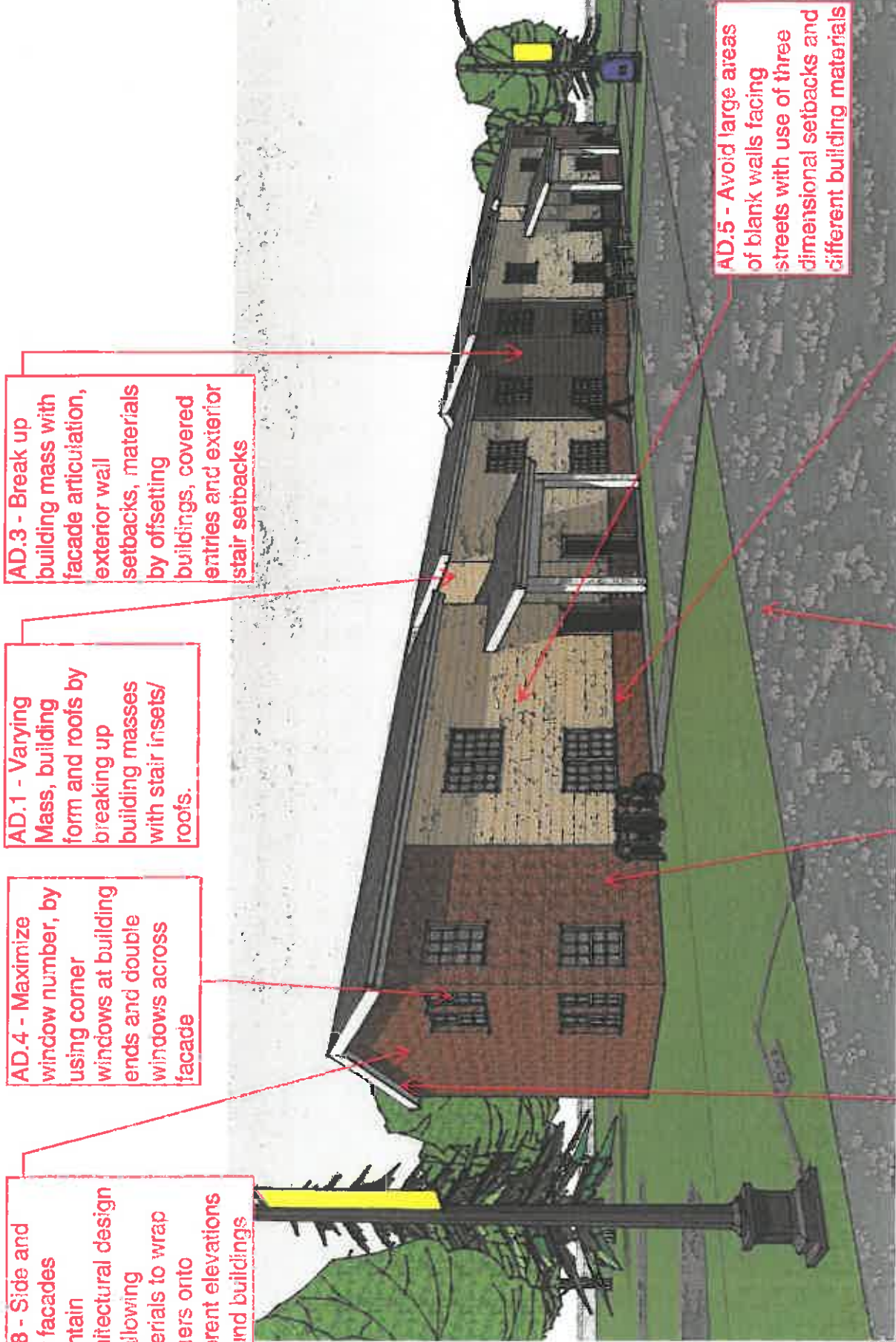


AD.8 - Side and rear facades maintain architectural design by allowing materials to wrap corners onto different elevations around buildings

AD.4 - Maximize window number, by using corner windows at building ends and double windows across facade

AD.1 - Varying Mass, building form and roofs by breaking up building masses with stair insets/roofs.

AD.3 - Break up building mass with facade articulation, exterior wall setbacks, materials by offsetting buildings, covered entries and exterior stair setbacks



AD.5 - Avoid large areas of blank walls facing streets with use of three dimensional setbacks and different building materials

AD.6 - Consider the design of porches and fascia boards by creating covered entries with openings and roof eave overhangs at gable ends

AD.7 - Use materials and colors for facade and roofing to emphasize architectural elements by extending masonry around building corners to create three dimensional material changes

AD.9 - Refer to site plan for building layout on site. Buildings utilize setbacks and movement to break up space around buildings and building

AD.2 - Refer to attached image of adjacent neighborhood to see similar scale and material choices

