



**ECSI**,LLC

ENGINEERS ■ CONSULTANTS ■ SCIENTISTS ■ INTERNATIONAL

An aerial photograph of Lexington, Kentucky, showing a dense urban grid, roads, and green spaces. The map is overlaid with the company name and project details.

# ECSI

## STATEMENT OF QUALIFICATIONS

LEXINGTON FAYETTE URBAN COUNTY GOVERNMENT

FOR PROFESSIONAL ENGINEERING SERVICES

RFP #13-2014

MARCH 26, 2014

340 South Broadway, Ste. 200 ■ Lexington, KY 40508

Phone: 859.233.2103 ■ Fax: 859.259.3394

[www.enrgservices.com](http://www.enrgservices.com)



340 South Broadway  
Suite 200  
Lexington, KY 40508-2553

[www.engrservices.com](http://www.engrservices.com)

LEXINGTON, KY  
PH: 859.233.2103  
FAX: 859.259.3394

CORBIN, KY  
PH: 606.526.6396  
FAX: 606.526.6398

OWENSBORO, KY  
PH: 270.683.8030

MARION, KY  
PH: 270.967.9019

PIKEVILLE, KY  
PH: 606.432.2443  
FAX: 606.432.2486

WILLIAMSON, WV  
PH: 304.235.1885  
FAX: 304.235.1887

BLACKSBURG, VA  
PH: 304.661.6551

LAWRENCEVILLE, IL  
PH: 618.707.2625



ECSI an affiliate of  
Ecology and Environment, Inc.  
[www.ene.com](http://www.ene.com)  
Offices World Wide

March 26, 2014

Theresa Maynard – Buyer Senior  
Lexington-Fayette Urban County Government  
Room 338, Government Center  
200 East Main Street  
Lexington, Kentucky 40507

RE: Request for Qualifications #13-2014  
Professional Engineering Services  
ECSI Proposal #014-011

Selection Committee Members:

ECSI, LLC is pleased to present our qualifications statement to the LFUCG for professional engineering services in the following categories: Contract 1 – Roadway corridor and intersection planning/design; Contract 2 – Right-of-Way or easement acquisition; Contract 3 – Construction drawings review for DOE manual compliance; and Contract 5 – Pedestrian, bike, or multimodal trail design/planning.

ECSI, LLC, a Lexington-based firm, brings together a diverse group comprising of 41 professionals with technical and environmental planning backgrounds, including civil and environmental engineers, land surveyors, hydrogeologists, geologists, environmental scientists and biologists. ECSI was founded as a Lexington firm by our current President, Steve Gardner, and has a 30-year history of providing various engineering and environmental services to clients throughout Kentucky and neighboring states.

Our team members have provided engineering design services for both public and private companies over the past 30 years. LFUCG has been a primary client of both Fred Eastridge, PE, PLS, and Douglas Mynear, PE, through their prior work experience. Our proposed team is dedicated to providing the highest level of service to LFUCG and providing cost-effective solutions to design problems which are on schedule and within budget.

Primary ECSI team members on this project include Fred Eastridge, PE, PLS; Douglas Mynear, PE; Steve Gardner, PE; and Karen Rose, EIT. Additional engineers, environmental scientists, surveyors and technical personnel are available to be assigned to the project, as need and schedule dictate. We have designated Fred Eastridge as the Project Manager for this contract and will perform 100 percent of the work using our Lexington-based personnel.

Additionally, we have teamed with Abbie Jones Consulting for this project. Abbie Jones is pre-qualified as a DBE entity and will perform a minimum of 10% of the project work. ECSI will utilize Abbie Jones primarily for field surveys and right-of-way and easement preparation).

In summary, we are very interested in this project and look forward to hearing back from you. We can be reached by email at [feastridge@engrservices.com](mailto:feastridge@engrservices.com) or [dmynear@engrservices.com](mailto:dmynear@engrservices.com). Thank you for your consideration.

Sincerely,

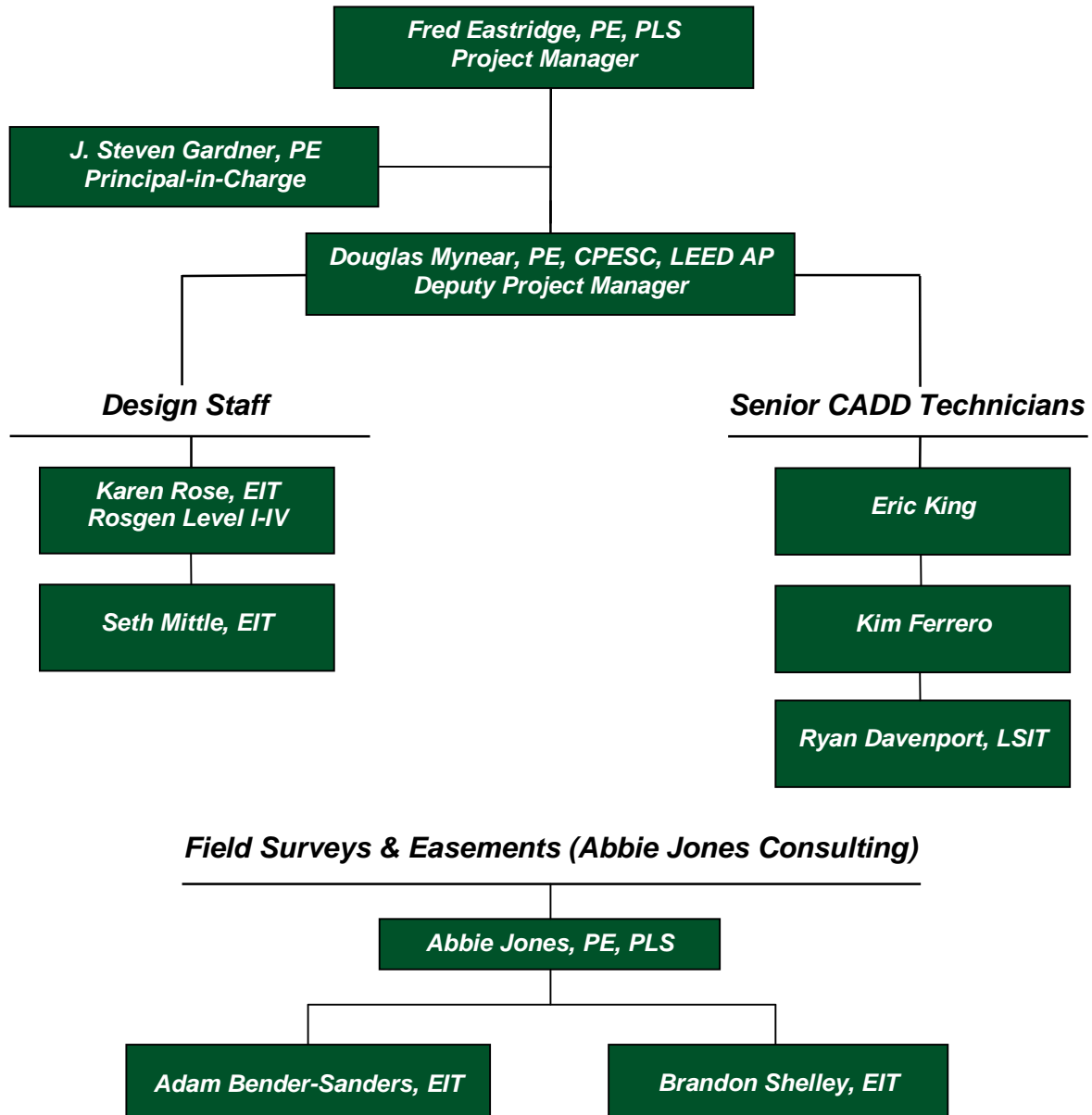
Fred Eastridge, PE, PLS  
Director of Civil Engineering

Douglas K. Mynear, PE, LEED AP  
Vice President

# **Contract 1**

**Roadway Corridor and  
Intersection Planning/Design**

## TEAM ORGANIZATION



### Risk Management

We have proposed redundant capability on our team chart to ensure LFUCG that we can successfully manage the project in the unlikely event of personnel changes. Fred Eastridge, PE, PLS has been assigned as the Project Manager and Douglas Mynear, PE as the Deputy Project Manager. Should Fred become unavailable to serve as the PM, then Doug would readily assume those duties. Both Fred and Doug have over 35 years of project experience and both have successfully managed prior LFUCG projects. Being a relatively small office, our entire civil staff typically gets involved on most projects, so project knowledge would not be a problem.

Likewise, ECSI has numerous additional engineers and technical staff not listed on the proposed team chart, however, they could be assigned as the need arises.

## **Firm Qualifications**

### **Prime Firm Experience**

ECSI, LLC, (ECSI) a Lexington-based firm, brings together a diverse group comprising 41 professionals with engineering, technical and environmental backgrounds; including civil/environmental engineers, geologists, environmental scientists, biologists and surveyors. ECSI has a 30-year history of providing various engineering and environmental services to clients throughout Kentucky and neighboring states.

Our key team members have provided roadway engineering design services for both public and private companies throughout the region over the past 35 years. The three key ECSI personnel assigned to the project management team (Steve Gardner, PE, PS – Principal-in-Charge; Fred Eastridge, PE, PLS – Project Manager; and Doug Mynear, PE, CPESC, LEED AP – Deputy Project Manager) each have in excess of 35-years of project management experience. Additionally, all three individuals are University of Kentucky College of Engineering graduates and have spent most, or all, of their careers in Lexington.

ECSI was initially formed by Steve Gardner in 1983 and has grown into one of the larger Lexington-headquartered engineering firms, currently with 41 employees. Over the past five years with the staff additions of Fred Eastridge and Douglas Mynear, the firm has greatly expanded its expertise in roadway engineering design. As mentioned above, both of these senior project managers have over 35-years of experience designing and managing roadway design projects, including projects with the LFUCG. With Fred serving as project manager and Doug serving as deputy project manager, our team offers demonstrated background knowledge and experience to successfully complete the design of roadway and street intersection projects assigned under this contract. In total, ECSI has six (7) Kentucky Licensed Engineers with four (4) PE's stationed here in the Lexington office. ECSI also has three (3) EIT's, three (3) professional geologists and numerous support personnel in the Lexington office.

ECSI holds KYTC "conditional status" pre-qualifications for Rural Roadway Design, Urban Roadway Design and Surveying. The conditional status was assigned due to ECSI not currently implementing Bentley software (Microstation and InRoads) on projects; a requirement for KYTC funded projects. Our staff implements AutoCad Map 3D and Carlson Civil software on project designs since this is the platform that a majority of our clients dictate. Additionally, ECSI holds KYTC pre-qualification in the areas of Pedestrian and Bicycle Facility Planning and Design; and UST and HAZMAT Site Analysis.

ECSI is currently working on the Rogers Road Stormwater Improvements project to relieve street and structure flooding within the neighborhood. This project involves the design of over 2,000 linear feet of box culvert storm sewer, new storm drain inlets, replacement of curb and driveways, and full width repaving of streets along the proposed culvert route. The proposed ECSI team also recently completed work on the Meadows-Northland-Arlington Neighborhood Improvements, Phase 5A for the LFUCG. This project was initially managed and designed by Fred Eastridge during his prior employment at SCB, and was revised and completed by the ECSI team. The Phase 5A project area included the streets of Park View, Carlisle, Locust Avenue, and Bryan Avenue. The Phase 5 project is one of several projects in Meadows-Northland-Arlington Neighborhood to improve the sanitary sewers, storm sewer, drainage and streets in the area. Another recently completed project for the LFUCG Division of Water Quality was the underground tunnel inspection for the Town Branch Sewer System between Mill Street and the Martin Luther King viaduct. This work was completed under a tight schedule and during somewhat inclement weather conditions.

### **Design Team Organization**

Steve Gardner, PE, PS will serve as Principal-in-Charge for this project. As the firm's President/CEO, Steve is ultimately responsible for assuring adequate personnel and resources are devoted to complete projects on schedule and within budget. Steve is a well-respected professional in the local engineering

community, evidenced by his having recently served on the Kentucky Board of Licensure, and his 2011 induction into the UK College of Engineering Hall of Distinction.

Fred Eastridge, PE, PLS has been assigned as ECSI's Project Manager for this project. Fred has worked in the Lexington consulting engineering community for the past 36 years providing site and roadway engineering services on a variety of public and private development projects. Fred's engineering expertise includes the performance and management of a wide range of roadway, drainage and other infrastructure improvement projects.

Douglas Mynear, PE, CPESC, LEED AP, will serve as Deputy Project Manager for the project. Doug has worked in the Lexington area for his entire 37 year engineering career and has managed and completed numerous projects involving roadway and drainage design in the region. Included in this experience is the design of three highway projects for the Kentucky Transportation Cabinet; roadway and intersection improvements in Mammoth Cave National Park; and various site and recreational access road designs. Doug has also provided many storm sewer and drainage designs associated with roadway projects.

### **Schedule and Budget Management**

Budget and schedule management have always been critical to the success of a project. This rings even more true in today's market, with prices fluctuating widely as economic factors change, it is important to have an ongoing strategy to effectively manage both. ECSI recognizes this market dynamic and has implemented internal quality procedures to ensure our projects finish on time and on budget. Following selection for this contract, our first task will be to meet with the assigned LFUCG project management team to further discuss and refine the time for completion, and review of budgets allocated to projects. Along with refinement of the schedule and budget, this initial meeting will be used to fully define and agree on the scope of the projects. Scope creep is often primarily responsible for projects exceeding schedule and budget targets, and is best managed by early recognition and prompt attention.

Likewise, continual routine communications between the ECSI design and LFUCG management teams is critical to keeping the project on schedule and budget. Preparation of construction cost opinions at pre-defined design submittal stages will help in identifying potential project overruns. Being local we can ordinarily attend impromptu project meetings to review and discuss these concerns. Likewise, we can easily and efficiently provide construction oversight throughout the project construction phase using our local engineering staff.

ECSI's project manager, Fred Eastridge, will be primarily responsible for schedule and budget control. He will be assisted in this effort by our internal administrative staff that includes clerical, bookkeeping/accounting, and project coordinator personnel. In particular, our internal project coordinator, Jeff Baird, is tasked with monitoring the budget and schedule on all projects within the Lexington office.

Quality documents result in accurate engineering cost estimates, construction bids within budget, limited change orders and projects that stay on schedule during construction. Our Quality Assurance process, which includes checklists for each phase and review by senior personnel, ensures this by generating reliable, consistent and accurate construction drawings. Internally, we maintain detailed schedules of all our resources and our current workload. This ensures the development and production of a project that stays on schedule. Manpower requirements are reviewed weekly to ensure the necessary skills and resources are available. As a result of these procedures and practices, ECSI has developed an outstanding track record for completing projects on time, within budget and with minimal change orders.

Based on our project experience and our local headquarters personnel, we believe our team is strongly qualified to assist the LFUCG with meeting their goal and completing roadway and intersection design projects under this contract. We have the current assigned team personnel availability to commit the necessary resources to give this project specialized attention for timely completion.

## **Contract 1 (Roadway Corridor and Intersection Design/Planning)**

### **Similar Design Projects**

#### **1. Meadows – Northland – Arlington Neighborhood Improvements, Phase 5A, Lexington, Kentucky – Date: July 2012**

The Meadows-Northland-Arlington, Phase 5 project consisted of approximately 15 acres of existing residential development. The area is bound by an arterial collector, Bryan Avenue, which is fronted by both residential and commercial entrances. The entire 15 acres of residential development lacked any form of an infrastructure storm drainage system, and streets were without sidewalks and drainage.

The scope of the project involved installing a storm sewer to facilitate drainage for the streets and roads, as well as the residences, widening the streets where necessary to create a uniform cross section, installing sidewalks, box curb and gutter, regrading streets to increase stopping sight distance where necessary, and correcting the aged sanitary sewer system. The proposed sanitary sewer design included a mixture of new sewers, point replacement, cure in place, slip lining, and complete line reconstruction. So as not to disturb residents and/or block them from their homes and minimize removal of mature trees in the streetscape, phased construction implementation was required. Several neighborhood meetings to explain scope, timing, and budget created a consensus amongst the community for the project. This project included the preparation of boundary description and exhibits for easement acquisition.

Fred Eastridge served as the project manager for this project during the original design while with a previous employer; and served as ECSI's project manager during the redesign and bidding phases.

Construction Bid Date – July 2012; Bid Amount – \$1,476,000

#### **2. Bluegrass-Aspendale Redevelopment, Lexington, Kentucky**

Project involved eighty-eight acre redevelopment of the Bluegrass-Aspendale Area in Lexington, funded by the Lexington Housing Authority. This project razed the existing dormitory style buildings and infrastructure to develop a new community with environmentally friendly living space. This area included an elementary school, open spaces, interconnected walks, bicycle routes and boulevard streets that added green space.

The primary challenge was to provide a design for replacing infrastructure in an old urban area of Lexington with one that was both environmentally friendly and met the budget of the Lexington Housing Authority. The existing streets, storm sewers, sanitary sewer and utilities were outdated and undersized for the planned redevelopment of the area. The area

had experienced flooding problems and sanitary sewers were in bad condition with excessive infiltration. The existing roads in the area were undersized to carry the traffic, as well as the new bus routes through the area, and the proposed school would bring additional traffic from the adjoining areas. The plan to handle the traffic in the area and the traffic traveling through the area was to construct a collector street from Midland Ave (a main access from downtown) through the development to Breckinridge Street where the new collector extended to Loudon Avenue, a main east-west collector. This new collector would provide easy access to the area and disperse the traffic, eliminating some of the existing traffic problems in the area and provide a new gateway into the renovated housing area. The collector running through the Bluegrass-Aspendale area was constructed as a boulevard with a large grass median, which provided a green area and open space to the urban environment.

Fred Eastridge served as the project manager for this project during the original design while with a previous employer.

Construction Date: June 2009; Contract Amount - \$4.89 million

### **3. Residential Development Infrastructure Design - Golf Townhomes Of Cherry Blossom**

ECSI, LLC provided infrastructure design for a 22-lot addition to the Golf Townhomes of Cherry Blossom residential area in Georgetown. ECSI initially prepared preliminary and final development plans and assisted the Client in obtaining Planning & Zoning approval for the proposed development. Final design included approximately 900 linear feet of street extension, along with the associated extension of the storm and sanitary sewer systems. Water quality design measures and a storm water pollution prevention plan (SWPPP) were included in the design to satisfy the requirements of the local governing authority.

Fred Eastridge served as the project manager for this project.

Construction Date – 2013; Bid Amount - \$128,500.

### **4. Falls Creek Drive Extension, Georgetown, Kentucky**

ECSI, LLC provided site and infrastructure design for the Falls Creek Mixed-Use Center located at the intersection of US 25 and Champion Drive in Georgetown, Kentucky. ECSI initially prepared preliminary and final development plans and assisted the Client in obtaining Planning & Zoning approval for the proposed development. Final design included approximately 1050 linear feet of Falls Creek Drive extension, along with the associated extension of the storm and sanitary sewer systems. The Falls Creek Drive extension was designed as a 36-foot wide, curb and gutter roadway. Water quality design measures and a storm water pollution prevention plan (SWPPP) were included in the design to satisfy the requirements of the local governing authority.

Fred Eastridge served as the project manager for this project.

Construction Date – Ongoing; Bid Amount - \$225,000.



March 24, 2014

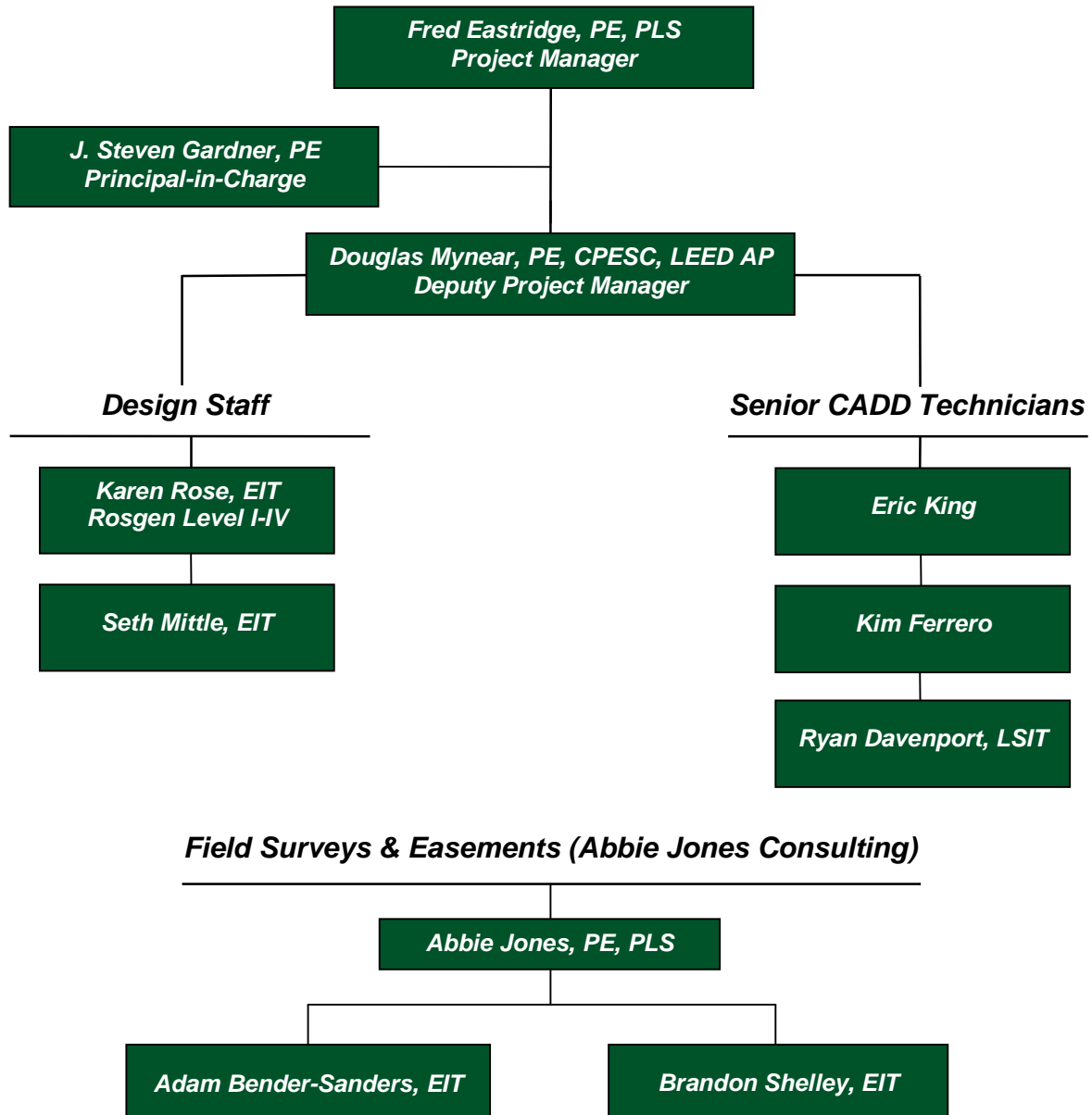
### **Past Client List (Contract 1)-**

1. LFUCG Division of Engineering – Bob Bayert, PE, PLS (859-263-3410)  
bobb@lexingtonky.gov or Charlie Martin, P.E. Director of Water Quality (859-425-2455)  
– **Meadows Phase 5A Block Grant Project**, (managed by Fred Eastridge while employed by SCB Architects)
2. LFUCG Division of Engineering – Andrew Grunwald, P.E. (859-263-3410)  
[agrunwald@lexingtonky.gov](mailto:agrunwald@lexingtonky.gov) – **Revision to Meadows Phase 5A & 5B**, managed by Fred Eastridge.
3. Lexington Housing Authority – Austin Sims, Executive Director (859-281-5060)  
[simma@lexha.org](mailto:simma@lexha.org) – **Bluegrass Aspendale Redevelopment**, (managed by Fred Eastridge while employed by SCB Architects)
4. Smith Realty Group – Doug Smith (502-863-1733) or Joey Smith (502-863-9999)  
[smithrealtygroup@yahoo.com](mailto:smithrealtygroup@yahoo.com), **Falls Creek Drive Extension** - managed by Fred Eastridge.
5. Amick Homes –Jas Sekhon (859-263-8012) – **Golf Townhomes of Cherry Blossom, Ikebana Drive Extension**, Georgetown, Kentucky

# **Contract 2**

**Right-of-Way or  
Easement Acquisition**

## TEAM ORGANIZATION



### Risk Management

We have proposed redundant capability on our team chart to ensure LFUCG that we can successfully manage the project in the unlikely event of personnel changes. Fred Eastridge, PE, PLS has been assigned as the Project Manager and Douglas Mynear, PE as the Deputy Project Manager. Should Fred become unavailable to serve as the PM, then Doug would readily assume those duties. Both Fred and Doug have over 35 years of project experience and both have successfully managed prior LFUCG projects. Being a relatively small office, our entire civil staff typically gets involved on most projects, so project knowledge would not be a problem.

Likewise, ECSI has numerous additional engineers and technical staff not listed on the proposed team chart, however, they could be assigned as the need arises.

## **Firm Qualifications**

### **Prime Firm Experience**

ECSI, LLC, (ECSI) a Lexington-based firm, brings together a diverse group comprising 41 professionals with engineering, technical and environmental backgrounds; including civil/environmental engineers, geologists, environmental scientists, biologists and surveyors. ECSI has a 30-year history of providing various engineering, land surveying and environmental services to clients throughout Kentucky and neighboring states.

Our key team members have provided right-of-way and easement acquisition services for both public and private companies throughout the region over the past 35 years. The three key ECSI personnel assigned to the project management team (Steve Gardner, PE, PS – Principal-in-Charge; Fred Eastridge, PE, PLS – Project Manager; and Doug Mynear, PE, CPESC, LEED AP – Deputy Project Manager) each have in excess of 35-years of project management experience. Additionally, all three individuals are University of Kentucky College of Engineering graduates and have spent most, or all, of their careers in Lexington.

ECSI was initially formed by Steve Gardner in 1983 and has grown into one of the larger Lexington-headquartered engineering firms, currently with 41 employees. Over the past five years with the staff additions of Fred Eastridge and Douglas Mynear, the firm has greatly expanded its expertise in civil engineering design. As mentioned above, both of these senior project managers have over 35-years of experience designing and managing design projects, including projects with the LFUCG. With Fred serving as project manager and Doug serving as deputy project manager, our team offers demonstrated background knowledge and experience to successfully complete the right-of-way and easement acquisition projects assigned under this contract. In total, ECSI has six (7) Kentucky Licensed Engineers with four (4) PE's stationed here in the Lexington office and two (2) Kentucky licensed Land Surveyors. ECSI also has three (3) EIT's, three (3) professional geologists and numerous support personnel in the Lexington office.

ECSI holds KYTC "conditional status" pre-qualifications for Rural Roadway Design, Urban Roadway Design and Surveying. The conditional status was assigned due to ECSI not currently implementing Bentley software (Microstation and InRoads) on projects; a requirement for KYTC funded projects. Our staff implements AutoCad Map 3D and Carlson Civil software on project designs since this is the platform that a majority of our clients dictate. Additionally, ECSI holds KYTC pre-qualification in the areas of Pedestrian and Bicycle Facility Planning and Design; and UST and HAZMAT Site Analysis.

ECSI is currently working on the Rogers Road Stormwater Improvements project to relieve street and structure flooding within the neighborhood. This project involves the design of over 2,000 linear feet of box culvert storm sewer, new storm drain inlets, replacement of curb and driveways, and full width repaving of streets along the proposed culvert route, and the preparation of and negotiation of easements with affected property owners. The proposed ECSI team also recently completed work on the Meadows-Northland-Arlington Neighborhood Improvements, Phase 5A for the LFUCG. This project was initially managed and designed by Fred Eastridge during his prior employment at SCB, and was revised and completed by the ECSI team. The Phase 5A project area included the streets of Park View, Carlisle, Locust Avenue, and Bryan Avenue. The Phase 5 project is one of several projects in Meadows-Northland-Arlington Neighborhood to improve the sanitary sewers, storm sewer, drainage and streets in the area. This project also involved the identification of and preparation of easement documents.

### **Design Team Organization**

Steve Gardner, PE, PS will serve as Principal-in-Charge for this project. As the firm's President/CEO, Steve is ultimately responsible for assuring adequate personnel and resources are devoted to complete projects on schedule and within budget. Steve is a well-respected professional in the local engineering

community, evidenced by his having recently served on the Kentucky Board of Licensure, and his 2011 induction into the UK College of Engineering Hall of Distinction.

Fred Eastridge, PE, PLS has been assigned as ECSI's Project Manager for this project. Fred has worked in the Lexington consulting engineering community for the past 36 years providing site, roadway and infrastructure engineering services on a variety of public and private development projects. Fred is a licensed land surveyor and is well-versed in the legal aspects of right-of-way and easement preparation.

Douglas Mynear, PE, CPESC, LEED AP, will serve as Deputy Project Manager for the project. Doug has worked in the Lexington area for his entire 37 year engineering career and has managed and completed numerous projects involving roadway and infrastructure design in the region. Most of these projects have involved some level right-of-way and easement handling.

### **Schedule and Budget Management**

Budget and schedule management have always been critical to the success of a project. This rings even more true in today's market, with prices fluctuating widely as economic factors change, it is important to have an ongoing strategy to effectively manage both. ECSI recognizes this market dynamic and has implemented internal quality procedures to ensure our projects finish on time and on budget. Following selection for this contract, our first task will be to meet with the assigned LFUCG project management team to further discuss and refine the time for completion, and review of budgets allocated to projects. Along with refinement of the schedule and budget, this initial meeting will be used to fully define and agree on the scope of the projects. Scope creep is often primarily responsible for projects exceeding schedule and budget targets, and is best managed by early recognition and prompt attention.

Likewise, continual routine communications between the ECSI design and LFUCG management teams is critical to keeping the project on schedule and budget. Preparation of construction cost opinions at pre-defined design submittal stages will help in identifying potential project overruns. Being local we can ordinarily attend impromptu project meetings to review and discuss these concerns. Likewise, we can easily and efficiently provide construction oversight throughout the project construction phase using our local engineering staff.

ECSI's project manager, Fred Eastridge, will be primarily responsible for schedule and budget control. He will be assisted in this effort by our internal administrative staff that includes clerical, bookkeeping/accounting, and project coordinator personnel. In particular, our internal project coordinator, Jeff Baird, is tasked with monitoring the budget and schedule on all projects within the Lexington office.

Quality documents result in accurate engineering cost estimates, construction bids within budget, limited change orders and projects that stay on schedule during construction. Our Quality Assurance process, which includes checklists for each phase and review by senior personnel, ensures this by generating reliable, consistent and accurate construction drawings. Internally, we maintain detailed schedules of all our resources and our current workload. This ensures the development and production of a project that stays on schedule. Manpower requirements are reviewed weekly to ensure the necessary skills and resources are available. As a result of these procedures and practices, ECSI has developed an outstanding track record for completing projects on time, within budget and with minimal change orders.

Based on our project experience and our local headquarters personnel, we believe our team is strongly qualified to assist the LFUCG with meeting their goal and completing right-of-way and easement acquisition projects under this contract. We have the current assigned team personnel availability to commit the necessary resources to give this project specialized attention for timely completion.

## **Contract 2 (Right-of-Way or Easement Acquisition)**

### **Similar Design Projects**

#### **1. Rogers Road Stormwater Improvements, Lexington, Kentucky**

ECSI, LLC is providing stormwater improvements design to alleviate structure and street flooding within a well-established neighborhood located in north Lexington. The 50-60 year-old neighborhood has long experienced flooding, and has been proposed for corrective measures as part of the consent decree agreement between the local government and the U.S. Environmental Protection Agency.

ECSI responsibilities on the project include field surveys, geotechnical investigations, hydrologic/hydraulic modeling, construction document preparation, Kentucky Infrastructure Authority funding coordination, **right-of-way and easement preparation and negotiations**, property acquisition negotiations, bidding assistance and construction oversight and administration.

The project involves construction of approximately 900 linear feet of 10-foot by 2-foot reinforced concrete box culvert and 1300 linear feet of 8-foot by 2.5-foot reinforced concrete box culvert. Portions of the existing storm sewer system will be left in service and will parallel the new storm sewers to increase capacity. Project design challenges include existing utility avoidance due to grade and cover limitations, and minimization of damage to existing structures and features due to the age and degree of development within the neighborhood.

Fred Eastridge is serving as the ECSI project manager for this project.

Construction Bid Date – N/A; Estimated Construction Cost – \$2.9M

#### **2. NRCS Wetland Reserve Boundary Survey, Somerset, Kentucky**

ECSI provided professional **land surveying and easement plat preparation for two tracts of property located in Pulaski County, Kentucky**. The properties owned by Patricia Arnow, a renowned author and photographer, were to be dedicated to the USDA-NRCS Wetlands Reserve Program. One tract consisted of approximately 88-acres and the second tract consisted of approximately 58-acres.

An initial field meeting was held with the NRCS and the property owner to establish the limits and exceptions to the property easement. Exceptions to the property easement granted to NRCS included the Arnow Homestead, a cemetery located on the property, and the access road leading to the homestead and cemetery. ECSI then conducted deed research to establish ownership of the adjacent landowners and any existing property easements. Field survey work followed to establish and mark the property boundary and

easement exceptions. Corner points in the property were monumented with pins and all corners and intermediate property lines were marked with NRCS specified posts and signage. ECSI then prepared final property descriptions for the areas to be dedicated to NRCS easements and those remaining exceptions to the set-aside easements. New property plat drawings were prepared and submitted to the NRCS for legal recording.

Douglas Mynear served as the project manager for this project.

Project Date: Winter 2013-2014; Contract Amount – N/A

### **3. Falls Creek Drive Extension, Georgetown, Kentucky**

ECSI, LLC provided site and infrastructure design for the Falls Creek Mixed-Use Center located at the intersection of US 25 and Champion Drive in Georgetown, Kentucky. ECSI initially prepared preliminary and final development plans and assisted the Client in obtaining Planning & Zoning approval for the proposed development. Final design included approximately 1050 linear feet of Falls Creek Drive extension, along with the associated extension of the storm and sanitary sewer systems. The Falls Creek Drive extension was designed as a 36-foot wide, curb and gutter roadway. Water quality design measures and a storm water pollution prevention plan (SWPPP) were included in the design to satisfy the requirements of the local governing authority. **As part of this project, ECSI established roadway right-of-way limits for the roadway that extended through the middle of the property development.**

Fred Eastridge served as the project manager for this project.

Construction Date – Ongoing; Bid Amount - \$275,000.

### **4. Whitley County Property Survey, Corbin, Kentucky**

This project involved the performance of a boundary survey and plat preparation for a proposed land transfer of a parcel of land owned by the City of Corbin. ECSI performed deed research and established right-of-way and property lines for the roughly one-third acre site, and set property pins for the site. The property was bounded on two sides by street right-of-ways (US 25 and First Street), and shares a common wall with the adjacent property to the south.

Fred Eastridge served as the project manager for this project.

Survey Date – Summer 2013; Bid Amount - \$N/A.

March 24, 2014

**Past Client List (Contract 2)-**

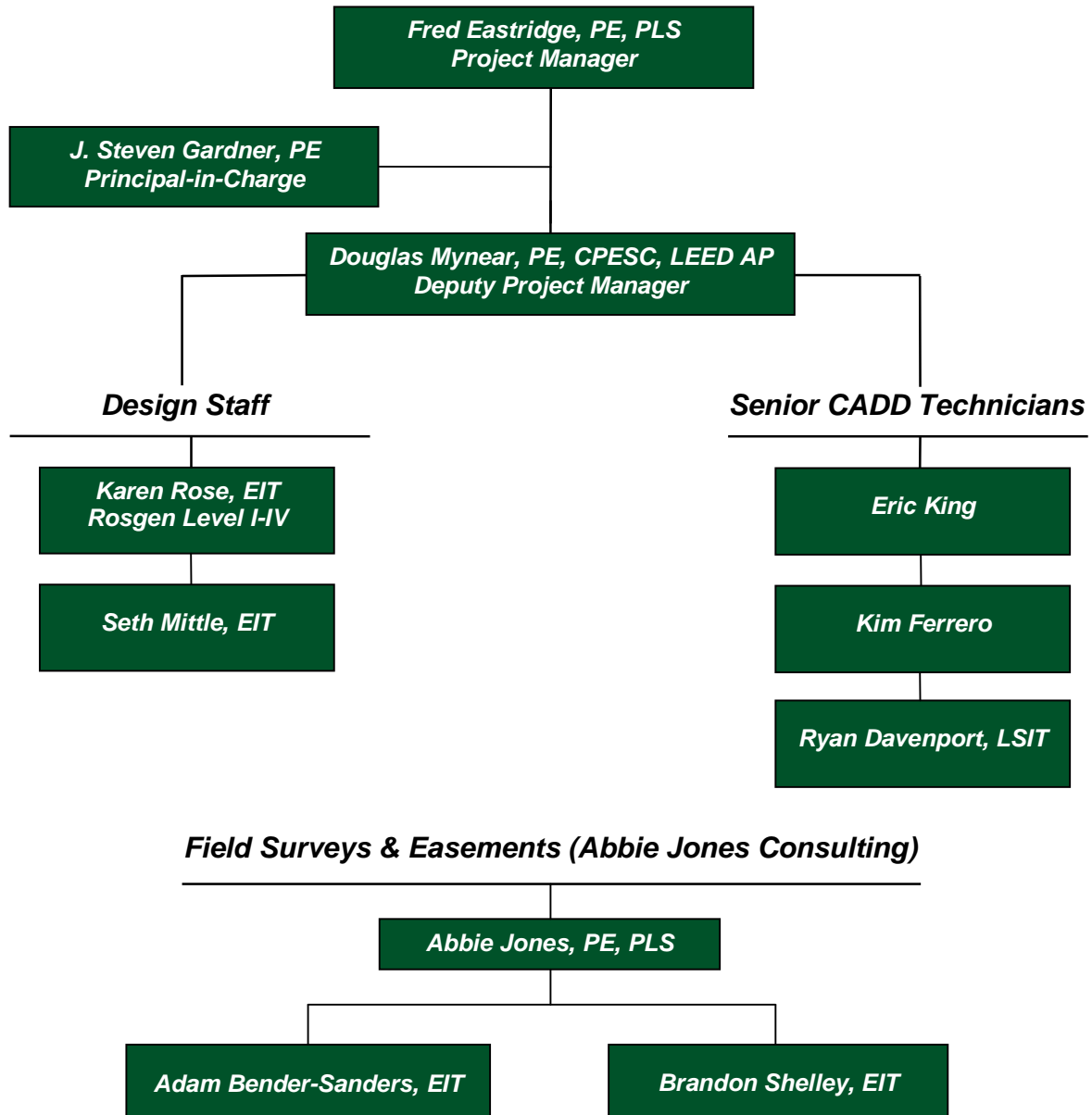
1. LFUCG Division of Water Quality – Greg Lubeck, PE CFM (859-258-3446) glubeck@lexingtonky.gov or Chris Dent, PE (859-425-2521)– **Rogers Road Stormwater Improvements Project** - managed by Fred Eastridge.
2. Natural Resources Conservation Service – Bruce Lawrence (859-224-7312) [bruce.lawrence@ky.usda.gov](mailto:bruce.lawrence@ky.usda.gov) – **Patricia Arnow Property Boundary Survey**, managed by Douglas Mynear.
3. Smith Realty Group – Doug Smith (502-863-1733) or Joey Smith (502-863-9999) [smithrealtygroup@yahoo.com](mailto:smithrealtygroup@yahoo.com), **Falls Creek Drive Extension** - managed by Fred Eastridge.
4. City of Corbin – Marlon Sams, Corbin City Manager (606-523-6520) [marlon.sams@corbin-ky.gov](mailto:marlon.sams@corbin-ky.gov) – **Boundary Survey South Main Street & First Street** – managed by Fred Eastridge.



# **Contract 3**

**Construction Drawings  
Review for DOE Manual  
Compliance**

## TEAM ORGANIZATION



### Risk Management

We have proposed redundant capability on our team chart to ensure LFUCG that we can successfully manage the project in the unlikely event of personnel changes. Fred Eastridge, PE, PLS has been assigned as the Project Manager and Douglas Mynear, PE as the Deputy Project Manager. Should Fred become unavailable to serve as the PM, then Doug would readily assume those duties. Both Fred and Doug have over 35 years of project experience and both have successfully managed prior LFUCG projects. Being a relatively small office, our entire civil staff typically gets involved on most projects, so project knowledge would not be a problem.

Likewise, ECSI has numerous additional engineers and technical staff not listed on the proposed team chart, however, they could be assigned as the need arises.

## **Firm Qualifications**

### **Prime Firm Experience**

ECSI, LLC, (ECSI) a Lexington-based firm, brings together a diverse group comprising 41 professionals with engineering, technical and environmental backgrounds; including civil/environmental engineers, geologists, environmental scientists, biologists and surveyors. ECSI has a 30-year history of providing various engineering, land surveying and environmental services to clients throughout Kentucky and neighboring states.

Our key team members have provided project design, bidding and construction services for both public and private companies throughout the region over the past 35 years. The three key ECSI personnel assigned to the project management team (Steve Gardner, PE, PS – Principal-in-Charge; Fred Eastridge, PE, PLS – Project Manager; and Doug Mynear, PE, CPESC, LEED AP – Deputy Project Manager) each have in excess of 35-years of project management experience. Additionally, all three individuals are University of Kentucky College of Engineering graduates and have spent most, or all, of their careers in Lexington.

ECSI was initially formed by Steve Gardner in 1983 and has grown into one of the larger Lexington-headquartered engineering firms, currently with 41 employees. Over the past five years with the staff additions of Fred Eastridge and Douglas Mynear, the firm has greatly expanded its expertise in civil engineering design. As mentioned above, both of these senior project managers have over 35-years of experience designing and managing design projects, including projects with the LFUCG. With Fred serving as project manager and Doug serving as deputy project manager, our team offers demonstrated background knowledge and experience to successfully complete the construction drawing review projects assigned under this contract. In total, ECSI has six (7) Kentucky Licensed Engineers with four (4) PE's stationed here in the Lexington office and two (2) Kentucky licensed Land Surveyors. ECSI also has three (3) EIT's, three (3) professional geologists and numerous support personnel in the Lexington office.

ECSI holds KYTC "conditional status" pre-qualifications for Rural Roadway Design, Urban Roadway Design and Surveying. The conditional status was assigned due to ECSI not currently implementing Bentley software (Microstation and InRoads) on projects; a requirement for KYTC funded projects. Our staff implements AutoCad Map 3D and Carlson Civil software on project designs, since this is the platform that a majority of our clients dictate. Additionally, ECSI holds KYTC pre-qualification in the areas of Pedestrian and Bicycle Facility Planning and Design; and UST and HAZMAT Site Analysis.

ECSI is currently working on the Rogers Road Stormwater Improvements project to relieve street and structure flooding within the neighborhood. This project involves the design of over 2,000 linear feet of box culvert storm sewer, new storm drain inlets, replacement of curb and driveways, and full width repaving of streets along the proposed culvert route, and the preparation of and negotiation of easements with affected property owners. The proposed ECSI team also recently completed work on the Meadows-Northland-Arlington Neighborhood Improvements, Phase 5A for the LFUCG. This project was initially managed and designed by Fred Eastridge during his prior employment at SCB, and was revised and completed by the ECSI team. The Phase 5A project area included the streets of Park View, Carlisle, Locust Avenue, and Bryan Avenue. The Phase 5 project is one of several projects in Meadows-Northland-Arlington Neighborhood to improve the sanitary sewers, storm sewer, drainage and streets in the area.

### **Design Team Organization**

Steve Gardner, PE, PS will serve as Principal-in-Charge for this project. As the firm's President/CEO, Steve is ultimately responsible for assuring adequate personnel and resources are devoted to complete projects on schedule and within budget. Steve is a well-respected professional in the local engineering community, evidenced by his having recently served on the Kentucky Board of Licensure, and his 2011 induction into the UK College of Engineering Hall of Distinction.

Fred Eastridge, PE, PLS has been assigned as ECSI's Project Manager for this project. Fred has worked in the Lexington consulting engineering community for the past 36 years providing site, roadway and infrastructure engineering services on a variety of public and private development projects. Fred is a licensed land surveyor as well, and is well-versed in the Division of Engineering design manuals and in preparing drawings to meet those standards.

Douglas Mynear, PE, CPESC, LEED AP, will serve as Deputy Project Manager for the project. Doug has worked in the Lexington area for his entire 37 year engineering career and has managed and completed numerous projects involving roadway and infrastructure design in the region. Doug is also is well-versed in the Division of Engineering design manuals and in preparing drawings to meet those standards.

### **Schedule and Budget Management**

Budget and schedule management have always been critical to the success of a project. This rings even more true in today's market, with prices fluctuating widely as economic factors change, it is important to have an ongoing strategy to effectively manage both. ECSI recognizes this market dynamic and has implemented internal quality procedures to ensure our projects finish on time and on budget. Following selection for this contract, our first task will be to meet with the assigned LFUCG project management team to further discuss and refine the time for completion, and review of budgets allocated to projects. Along with refinement of the schedule and budget, this initial meeting will be used to fully define and agree on the scope of the projects. Scope creep is often primarily responsible for projects exceeding schedule and budget targets, and is best managed by early recognition and prompt attention.

Likewise, continual routine communications between the ECSI design and LFUCG management teams is critical to keeping the project on schedule and budget. Preparation of construction cost opinions at pre-defined design submittal stages will help in identifying potential project overruns. Being local we can ordinarily attend impromptu project meetings to review and discuss these concerns. Likewise, we can easily and efficiently provide construction oversight throughout the project construction phase using our local engineering staff.

ECSI's project manager, Fred Eastridge, will be primarily responsible for schedule and budget control. He will be assisted in this effort by our internal administrative staff that includes clerical, bookkeeping/accounting, and project coordinator personnel. In particular, our internal project coordinator, Jeff Baird, is tasked with monitoring the budget and schedule on all projects within the Lexington office.

Quality documents result in accurate engineering cost estimates, construction bids within budget, limited change orders and projects that stay on schedule during construction. Our Quality Assurance process, which includes checklists for each phase and review by senior personnel, ensures this by generating reliable, consistent and accurate construction drawings. Internally, we maintain detailed schedules of all our resources and our current workload. This ensures the development and production of a project that stays on schedule. Manpower requirements are reviewed weekly to ensure the necessary skills and resources are available. As a result of these procedures and practices, ECSI has developed an outstanding track record for completing projects on time, within budget and with minimal change orders.

Based on our project experience and our local headquarters personnel, we believe our team is strongly qualified to assist the LFUCG with meeting their goal and completing the construction drawings review projects under this contract. We have the current assigned team personnel availability to commit the necessary resources to give this project specialized attention for timely completion.

## **Contract 3 (Construction Drawing Review for DOE Manual Compliance)**

### **Similar Projects**

The projects listed here represent projects that ECSI, or our proposed team members, have designed in accordance with the LFUCG Division of Engineering manuals.

#### **1. Anniston/Wickland Capital Storm Water Project, Lexington, KY**

The project consisted of storm drainage analysis, hydrology, preliminary design, final design, construction drawings, and construction cost opinion, permitting and construction management for the Anniston/Wickland Area in Lexington. The study analyzed causes for the flooding and recommended solutions to provide relieve from flooding in the 25yr storm event. A challenge for the design was that the area involved karst substrate and the primary outlet consisted of sink holes located at the low end of the drainage system at Anniston Drive. The goals of the design were to provide adequate storm water control for the 25yr storm event and to maintain water quality BMPs to keep sediment and debris out of the sink holes. The recommended solution involved construction of three storm water control facilities and increase in size of the storm sewer system. Phase 2 of the project included the replacement of the 10" VCP sanitary sewer with a 12" DI sanitary sewer.

Fred Eastridge served as the project manager for this project during the original design while with a previous employer.

Phase 2 Construction Date – 2011; Phase 2 Bid Amount – \$654K

#### **2. Bluegrass-Aspendale Redevelopment, Lexington, Kentucky**

Project involved eighty-eight acre redevelopment of the Bluegrass-Aspendale Area in Lexington, funded by the Lexington Housing Authority. This project razed the existing dormitory style buildings and infrastructure to develop a new community with environmentally friendly living space. This area included an elementary school, open spaces, interconnected walks, bicycle routes and boulevard streets that added green space. The existing streets, storm sewers, sanitary sewer and utilities were outdated and undersized for the planned redevelopment of the area. The area had experienced flooding problems and sanitary sewers were in bad condition with excessive infiltration. The existing roads in the area were undersized to carry the traffic, as well as the new bus routes through the area, and the proposed school would bring additional traffic from the adjoining areas. The plan to handle the traffic in the area and the traffic traveling through the area was to construct a collector street from Midland Ave (a main access from downtown) through the development to Breckinridge Street where the new collector extended to Loudon Avenue, a main east-west collector. This new collector would provide easy access to the area and disperse the traffic, eliminating some of the existing traffic problems in the area and provide a new gateway into the renovated housing area.

Fred Eastridge served as the project manager for this project during the original design while with a previous employer.

Construction Date: June 2009; Contract Amount - \$4.89 million

### **3. Meadows – Northland – Arlington Neighborhood Improvements, Phase 5A, Lexington, Kentucky**

The Meadows-Northland-Arlington, Phase 5A project consisted of approximately 15 acres of existing residential development. The area is bound by an arterial collector, Bryan Avenue, which is fronted by both residential and commercial entrances. The entire 15 acres of residential development lacked any form of an infrastructure storm drainage system, and streets were without sidewalks and drainage. The scope of the project involved installing a storm sewer to facilitate drainage for the streets and roads, as well as the residences, widening the streets where necessary to create a uniform cross section, installing sidewalks, box curb and gutter, regrading streets to increase stopping sight distance where necessary, and correcting the aged sanitary sewer system. The proposed sanitary sewer design included a mixture of new sewers, point replacement, cure in place, slip lining, and complete line reconstruction. Several neighborhood meetings to explain scope, timing, and budget created a consensus amongst the community for the project. This project included the preparation of boundary description and exhibits for easement acquisition.

Fred Eastridge served as the project manager for this project during the original design while with a previous employer; and served as ECSI's project manager during the redesign and bidding phases.

Construction Bid Date – July 2012; Bid Amount - \$1,476,000.

### **4. West Glendover Drainage Improvements, Lexington, Kentucky**

This project involved a drainage study and preparation of construction documents for the West Glendover Drainage Improvement Project. This project was necessary because of flooding conditions in a residential area downstream of the LFUCG-University of Kentucky Arboretum. A series of three detention basins combined with large areas of native plantings were proposed to mitigate the drainage problems. The first and second basins were designed as small collection/infiltration ponds with rock spillway overflows. The third and largest basin was designed as a wetland detention basin with a lengthened flow path and permanent pool. All basins were planted with water tolerant native plantings to slow runoff and increase infiltration through virtue of their deep root systems. The existing walking path through the area was realigned and reconstructed as a recycled plastic lumber footbridge to promote understanding of the function of the wetland basin.

Doug Mynear served as the project manager for this project during the original design while with a previous employer.

Construction Date – 2008; Construction Amount – \$470K

March 24, 2014

**Past Client List (Contract 3)-**

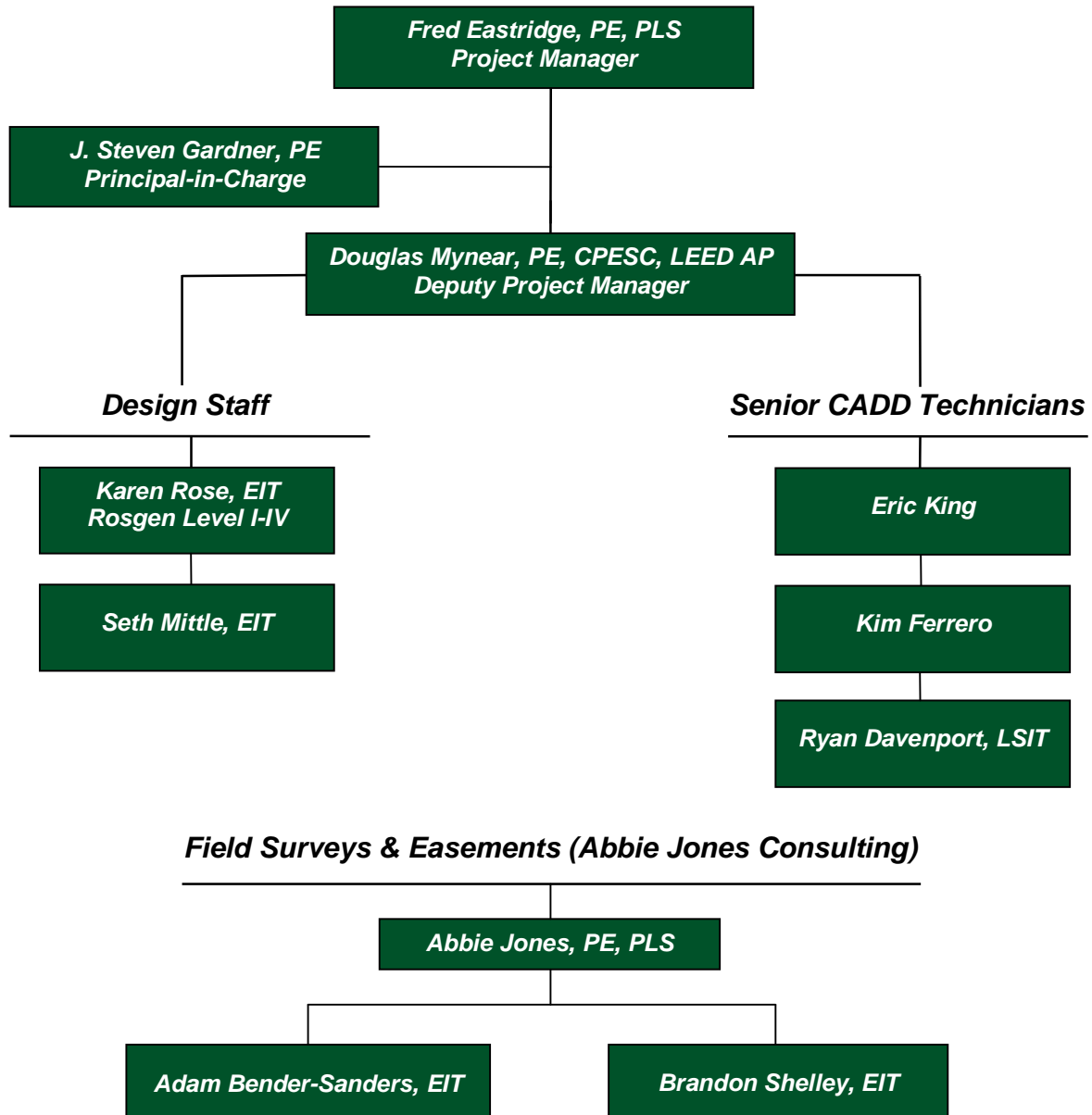
1. LFUCG Division of Engineering – Bob Bayert, PE, PLS (859-263-3410)  
bobb@lexingtonky.gov or Charlie Martin, P.E. Director of Water Quality (859-425-2455)  
– **Meadows Phase 5A Block Grant Project**, (managed by Fred Eastridge while employed by SCB Architects)
2. LFUCG Division of Water Quality – Greg Lubeck, PE CFM (859-258-3446)  
glubeck@lexingtonky.gov– **Anniston/Wickland Capital Storm Water Project** - managed by Fred Eastridge.
3. Lexington Housing Authority – Austin Sims, Executive Director (859-281-5060)  
[simma@lexha.org](mailto:simma@lexha.org) – **Bluegrass Aspendale Redevelopment**, (managed by Fred Eastridge while employed by SCB Architects)
4. LFUCG Division of Water Quality – Greg Lubeck, PE CFM (859-258-3446)  
glubeck@lexingtonky.gov– **West Glendover Drainage Improvements Project** - managed by Douglas Mynear.

# **Contract 5**

**Pedestrian, Bike, or  
Multimodal Trail Design/Planning**



## TEAM ORGANIZATION



### Risk Management

We have proposed redundant capability on our team chart to ensure LFUCG that we can successfully manage the project in the unlikely event of personnel changes. Fred Eastridge, PE, PLS has been assigned as the Project Manager and Douglas Mynear, PE as the Deputy Project Manager. Should Fred become unavailable to serve as the PM, then Doug would readily assume those duties. Both Fred and Doug have over 35 years of project experience and both have successfully managed prior LFUCG projects. Being a relatively small office, our entire civil staff typically gets involved on most projects, so project knowledge would not be a problem.

Likewise, ECSI has numerous additional engineers and technical staff not listed on the proposed team chart, however, they could be assigned as the need arises.

## **Firm Qualifications**

### **Prime Firm Experience**

ECSI, LLC, (ECSI) a Lexington-based firm, brings together a diverse group comprising 41 professionals with engineering, technical and environmental backgrounds; including civil/environmental engineers, geologists, environmental scientists, biologists and surveyors. ECSI has a 30-year history of providing various engineering and environmental services to clients throughout Kentucky and neighboring states.

Our key team members have provided roadway, bike, and multimodal trail engineering design services for both public and private companies throughout the region over the past 35 years. The three key ECSI personnel assigned to the project management team (Steve Gardner, PE, PS – Principal-in-Charge; Fred Eastridge, PE, PLS – Project Manager; and Doug Mynear, PE, CPESC, LEED AP – Deputy Project Manager) each have in excess of 35-years of project management experience. Additionally, all three individuals are University of Kentucky College of Engineering graduates and have spent most, or all, of their careers in Lexington.

ECSI was initially formed by Steve Gardner in 1983 and has grown into one of the larger Lexington-headquartered engineering firms, currently with 41 employees. Over the past five years with the staff additions of Fred Eastridge and Douglas Mynear, the firm has greatly expanded its expertise in roadway and trail engineering design. As mentioned above, both of these senior project managers have over 35-years of experience designing and managing roadway, bike, sidewalk and multimodal trail design projects, including projects with the LFUCG. With Fred serving as project manager and Doug serving as deputy project manager, our team offers demonstrated background knowledge and experience to successfully complete the design of pedestrian, bike or multimodal trail projects assigned under this contract. In total, ECSI has six (7) Kentucky Licensed Engineers with four (4) PE's stationed here in the Lexington office. ECSI also has three (3) EIT's, three (3) professional geologists, one (1) licensed land surveyor, plus numerous support personnel in the Lexington office.

ECSI holds KYTC "conditional status" pre-qualifications for Rural Roadway Design, Urban Roadway Design and Surveying. The conditional status was assigned due to ECSI not currently implementing Bentley software (Microstation and InRoads) on projects; a requirement for KYTC funded projects. Our staff implements AutoCad Map 3D and Carlson Civil software on project designs since this is the platform that a majority of our clients dictate. Additionally, ECSI holds KYTC pre-qualification in the areas of Pedestrian and Bicycle Facility Planning and Design; and UST and HAZMAT Site Analysis.

ECSI is currently working on the Rogers Road Stormwater Improvements project to relieve street and structure flooding within the neighborhood. This project involves the design of over 2,000 linear feet of box culvert storm sewer, new storm drain inlets, replacement of curb and driveways, and full width repaving of streets along the proposed culvert route. The proposed ECSI team also recently completed work on the Meadows-Northland-Arlington Neighborhood Improvements, Phase 5A for the LFUCG. This project was initially managed and designed by Fred Eastridge during his prior employment at SCB, and was revised and completed by the ECSI team. The Phase 5A project area included the streets of Park View, Carlisle, Locust Avenue, and Bryan Avenue. The Phase 5 project is one of several projects in Meadows-Northland-Arlington Neighborhood to improve the sanitary sewers, storm sewer, drainage and streets in the area.

### **Design Team Organization**

Steve Gardner, PE, PS will serve as Principal-in-Charge for this project. As the firm's President/CEO, Steve is ultimately responsible for assuring adequate personnel and resources are devoted to complete projects on schedule and within budget. Steve is a well-respected professional in the local engineering community, evidenced by his having recently served on the Kentucky Board of Licensure, and his 2011 induction into the UK College of Engineering Hall of Distinction.

Fred Eastridge, PE, PLS has been assigned as ECSI's Project Manager for this project. Fred has worked in the Lexington consulting engineering community for the past 36 years providing site and roadway engineering services on a variety of public and private development projects. Fred's engineering expertise includes the performance and management of a wide range of roadway, drainage and other infrastructure improvement projects, including roadway projects that incorporated bike lanes and sidewalks as a part of the project.

Douglas Mynear, PE, CPESC, LEED AP, will serve as Deputy Project Manager for the project. Doug has worked in the Lexington area for his entire 37 year engineering career and has managed and completed numerous projects involving roadway and infrastructure design in the region. Included in this experience is the preparation of a 9-mile bikeway alignment study for Mammoth Cave National Park; 1-1/2-mile bikeway design for the Big South Fork National River and Recreation Area; and design for realignment and pedestrian bridge construction in the UK Arboretum.

### **Schedule and Budget Management**

Budget and schedule management have always been critical to the success of a project. This rings even more true in today's market, with prices fluctuating widely as economic factors change, it is important to have an ongoing strategy to effectively manage both. ECSI recognizes this market dynamic and has implemented internal quality procedures to ensure our projects finish on time and on budget. Following selection for this contract, our first task will be to meet with the assigned LFUCG project management team to further discuss and refine the time for completion, and review of budgets allocated to projects. Along with refinement of the schedule and budget, this initial meeting will be used to fully define and agree on the scope of the projects. Scope creep is often primarily responsible for projects exceeding schedule and budget targets, and is best managed by early recognition and prompt attention.

Likewise, continual routine communications between the ECSI design and LFUCG management teams is critical to keeping the project on schedule and budget. Preparation of construction cost opinions at pre-defined design submittal stages will help in identifying potential project overruns. Being local we can ordinarily attend impromptu project meetings to review and discuss these concerns. Likewise, we can easily and efficiently provide construction oversight throughout the project construction phase using our local engineering staff.

ECSI's project manager, Fred Eastridge, will be primarily responsible for schedule and budget control. He will be assisted in this effort by our internal administrative staff that includes clerical, bookkeeping/accounting, and project coordinator personnel. In particular, our internal project coordinator, Jeff Baird, is tasked with monitoring the budget and schedule on all projects within the Lexington office.

Quality documents result in accurate engineering cost estimates, construction bids within budget, limited change orders and projects that stay on schedule during construction. Our Quality Assurance process, which includes checklists for each phase and review by senior personnel, ensures this by generating reliable, consistent and accurate construction drawings. Internally, we maintain detailed schedules of all our resources and our current workload. This ensures the development and production of a project that stays on schedule. Manpower requirements are reviewed weekly to ensure the necessary skills and resources are available. As a result of these procedures and practices, ECSI has developed an outstanding track record for completing projects on time, within budget and with minimal change orders.

Based on our project experience and our local headquarters personnel, we believe our team is strongly qualified to assist the LFUCG with meeting their goal and completing pedestrian, bike, and multimodal trail design projects under this contract. We have the current assigned team personnel availability to commit the necessary resources to give this project specialized attention for timely completion.

## **Contract 5 (Pedestrian, Bike or Multimodal Trail Design/Planning)**

### **Similar Design Projects**

#### **1. Mammoth Cave Bikeway Alignment Study – Date: FY2009**

Mammoth Cave National Park is comprised of a surface area of over 53,000 acres with a diverse ecological system that is rich in cultural and historical significance. The **9-mile bikeway** was envisioned as an alternate transportation route from Park City to the visitor center, and as a link between many of the park's features and services. The bikeway will provide visitors with a different and, for some, a more enjoyable view of the landscape. The development of the conceptual bikeway plan and cost estimate followed a rational and goal-oriented methodology. The multi-phase project included a design charrette/brainstorming session early in the process to utilize the knowledge and assets resident in the Park staff and Park City elected officials; to bring issues and concerns to the forefront; and to identify the desired outcomes of the stakeholders. The planning team incorporated information gained during the charrette to propose a preferred alignment for the bikeway.

Doug Mynear served as the project manager for this project during the original design while with a previous employer.

Construction Bid Date – N/A; Bid Amount – N/A

#### **2. Bluegrass-Aspendale Redevelopment, Lexington, Kentucky**

Project involved eighty-eight acre redevelopment of the Bluegrass-Aspendale Area in Lexington, funded by the Lexington Housing Authority. This project razed the existing dormitory style buildings and infrastructure to develop a new community with environmentally friendly living space. This area included an elementary school, open spaces, **interconnected walks, bicycle routes** and boulevard streets that added green space. The existing streets, storm sewers, sanitary sewer and utilities were outdated and undersized for the planned redevelopment of the area. The area had experienced flooding problems and sanitary sewers were in bad condition with excessive infiltration. The existing roads in the area were undersized to carry the traffic, as well as the new bus routes through the area, and the proposed school would bring additional traffic from the adjoining areas. The plan to handle the traffic in the area and the traffic traveling through the area was to construct a collector street from Midland Ave (a main access from downtown) through the development to Breckinridge Street where the new collector extended to Loudon Avenue, a main east-west collector. This new collector would provide easy access to the area and disperse the traffic, eliminating some of the existing traffic problems in the area and provide a new gateway into the renovated housing area.

Fred Eastridge served as the project manager for this project during the original design while with a previous employer.

Construction Date: June 2009; Contract Amount - \$4.89 million

### **3. Chilesburg Road, Lexington, Kentucky**

Project involved design for the conversion of Chilesburg Road from Richmond Road to the intersection of Hayes Boulevard **into a multi-use path for use by pedestrians and bicyclists**. The scenic route permits users the opportunity to enjoy the scenic nature of the area in a less dense building surrounding.

Fred Eastridge served as the project manager for this project while with a previous employer.

Construction Date – 2002; Bid Amount - \$750,000.

### **4. Shropshire Road, Lexington, Kentucky**

Project involved the design of Shropshire Road with associated bike lanes from Midland Ave to 3rd Street and from 3rd Street to Breckinridge Street. This project included construction of a new collector street **with bike lanes and pedestrian sidewalks in the Bluegrass – Aspendale Area, creating new interconnectivity in the inner city area**.

Fred Eastridge served as the project manager for this project while with a previous employer.

Construction Date – 2008; Bid Amount - \$1,250,000.

### **5. West Glendover Drainage Improvements, Lexington, Kentucky**

This project involved a drainage study and preparation of construction documents for the West Glendover Drainage Improvement Project. This project was necessary because of flooding conditions in a residential area downstream of the LFUCG-University of Kentucky Arboretum. A series of three detention basins combined with large areas of native plantings were proposed to mitigate the drainage problems. Native planting areas upslope of the basins were recommended to increase infiltration and evapotranspiration of runoff before it reached the basins. The first and second basins were designed as small collection/infiltration ponds with rock spillway overflows. The third and largest basin was designed as a wetland detention basin with a lengthened flow path and permanent pool. All basins were planted with water tolerant native plantings to slow runoff and increase infiltration through virtue of their deep root systems. **The existing walking path through the area was realigned and reconstructed as a recycled plastic lumber footbridge to promote understanding of the function of the wetland basin.**

Doug Mynear served as the project manager for this project during the original design while with a previous employer.

Construction Date – 2008; Construction Amount – \$470K

March 24, 2014

**Past Client List (Contract 5)-**

1. Mammoth Cave National Park – Steve Kovar, PE (270-758-2101) [steve\\_kovar@nps.gov](mailto:steve_kovar@nps.gov) – **Mammoth Cave Bikeway Alignment Study**, (managed by Douglas Mynear while employed by Parsons Brinckerhoff)
2. Lexington Housing Authority – Austin Sims, Executive Director (859-281-5060) [simma@lexha.org](mailto:simma@lexha.org) – **Bluegrass Aspendale Redevelopment**, (managed by Fred Eastridge while employed by SCB Architects)
3. LFUCG Division of Water Quality – Greg Lubeck, PE CFM (859-258-3446) [glubeck@lexingtonky.gov](mailto:glubeck@lexingtonky.gov)– **West Glendover Drainage Improvements Project** - managed by Douglas Mynear.

# Shared Required Form

**Licenses:**

Professional Engineer:

KY #13565, WV #0106223,  
IN #11012101,  
MO #2010029707,  
OH #67181, IL #062-054708,  
NCEES #26304

Professional Land Surveyor:

KY #2695

**Education:**

Bachelor of Science, Civil  
Engineering - University of  
Kentucky

Bachelor of General Studies -  
University of Kentucky

KYTC Traffic Impact Study  
Course

Mr. Eastridge, a licensed Professional Engineer for over 33 years, has a variety of civil experience including road and trail design, site development, storm and sanitary sewer design, environmental mitigation, utility design, and surveying. During the course of his career he has worked extensively with the Kentucky Department of Transportation, the Kentucky Division of Water, and many Kentucky municipalities.



- Designed stormwater quality and quantity control facilities for a 385 acre watershed in Lexington.
- Stormwater control/sewer lines- Bluegrass Aspendale
- Anniston/Wickland storm sewer and storm water control in the North Elkhorn Watershed.
- Meadows - Northland Arlington Phase 5 stormwater control/sewer pipe rehabilitation/new pump station
- Georgetown Street revitalization stormwater control, Lexington
- Russell Cave Road redevelopment stormwater control, Lexington
- Site planning & engineering design for redevelopment, stormwater control measures and storm sewer systems - Arbors Subdivision of Charlotte Court, Lexington

**Bluegrass Aspendale Renovation, Lexington, Kentucky**

Fred was the project manager for the 88-acre redevelopment of the Bluegrass Aspendale Area in Lexington, Kentucky funded by the Lexington Housing Authority. This project involved removal of the existing dormitory style buildings and the existing infrastructure to develop a renovated community with a combination of single-family residential and multi-family structures in an environmentally friendly space. The redeveloped area included an elementary school, open spaces, interconnected walks, bicycle routes and boulevard streets that added green spaces to the area. As part of the project, a new collector street running from Midland Avenue through the development to Breckinridge Street was constructed. The internal road system was design to provide inter-connectivity, with large boulevard green areas to provide green space. The design of the road system provided for smaller areas to provide for a smaller community feel in the large redevelopment as well as giving the area an identity of its own.

**Hayes Boulevard, Lexington, Kentucky**

Hayes Boulevard was a collector road constructed by the Lexington-Fayette Urban County Government in conjunction with a private developer in Lexington-Fayette County's expansion area. The boulevard connected Richmond Road with Todds Road and provided as a major collector roadway for new development in the eastern portion of Fayette County. Fred served as project manager and designed one of the first sections of the boulevard to be constructed by the LFUCG and Barlow Homes. The design of the 700' section of Hayes Boulevard was accomplished in conjunction with the design and construction of Barlow Homes' 120 acre residential subdivision "Richardson Subdivision". In the design of the boulevard, provisions were included to provide storm sewers, sanitary sewers and utilities to the Richardson Subdivision and other properties that would be developed along Hayes Boulevard as part of future developments.

**Bryan Avenue Street Improvements, Lexington, KY**

The project involved design, surveying and permitting for vertical geometry improvements to 1,200 feet of Bryan Avenue. Professional design services were provided in 2011. The construction has not been funded by the LFUCG. Fred served as the project manager and designer for the project.



## DOUGLAS K. MYNEAR, P.E., LEED AP

## Vice President/Director Project Engineer/Deputy Project Manager

### Licenses:

Professional Engineer:  
KY #11760, WV #9438  
LEED Accredited

### Professional:

U.S. Green Building Council  
Certified Professional in  
Erosion & Sediment  
Control

### Education:

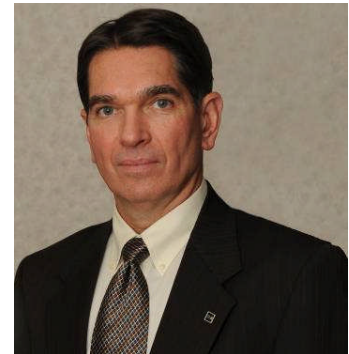
MS, Agricultural  
Engineering/Urban  
Hydrology - UK  
BS, Agricultural Engineering -  
UK

### Training:

LEED Training Workshop  
How to Write & Implement a  
SWPPP to Meet NPDES  
Requirements  
XP-SWMM Training  
Drainage Design Workshop

Mr. Mynear is experienced in hydrological/hydraulic studies, drainage design, site planning/design, highway/roadway design, water distribution, storm and sanitary sewers, wastewater pretreatment, and recreational facility design. His experience includes:

- Rogers Road Neighborhood Stormwater Improvements, LFUCG - Lexington, Kentucky
- Drainage investigation – Floyd Dr./Dartmoor Ct.
- Drainage improvement projects – West Glendover, Coventry Ct., Lexington; Drive-In Branch, Reeves Rd., Esther Ave, Parkwood/Triangle Drive Area, Louisville; Van Voorhis Family Housing Fort Knox, Kentucky
- Morgan Avenue drainage study and detention basin, Lexington, Kentucky
- US Route 27 Highway Improvements, Alexandria, Campbell County, Kentucky
- Mammoth Cave Road Improvements, Mammoth Cave, Kentucky
- KY 1638 Highway Improvements, Meade County, Kentucky
- KY 210 Highway Improvements, Taylor County, Kentucky
- CTS Operations Center Site Design and Roadway Improvements, City of Charlottesville - Charlottesville, Virginia
- LexTran Facilities Improvement Site Planning & Design, Transit Authority of Lexington- Lexington, Kentucky
- North Beach Atlantic Avenue Drainage Improvements, Virginia Beach, Virginia
- The Pavilion Recreation Center Site Plan and Access Road, Georgetown, Kentucky



## J. STEVEN GARDNER, P.E., P.S.

## President/CEO Principal in Charge

### Licenses:

Professional Engineer:  
KY #11187, TN #13257,  
WV #10319, VA #012458,  
PA #PE074572, CO #42921  
NCEES #32398

Professional Surveyor:  
WV #1424

### Education:

M.S., Mining Engineering,  
University of Kentucky  
B.S., Agricultural Engineering,  
University of Kentucky  
Environmental Systems  
Certificate, University of  
Kentucky

Mr. Gardner is a licensed Professional Engineer, graduate Mining Engineer and Agricultural Engineer. Providing professional environmental and engineering services for over 35 years, his consulting practice focuses on sensitive land use issues, reclamation liability, environmental, health and safety issues, mining and quarry operations, due diligence studies, and industrial heritage projects. Some of the projects that Mr. Gardner has directed include:

- Cumulative Impact Assessments (CIA) for Middle Fork Kentucky River Watershed; North Fork Kentucky Watershed; and Licking River Watershed. These three individual studies involved a ground-breaking approach to analyze the cumulative impacts of mining, logging, development, and other anthropogenic influences on the water quality and benthic health of streams within these HUC-8 watersheds. Mr. Gardner managed the projects, coordinated all subconsultants and devised the study methodologies.
- Nationwide Environmental Impact Statement addressing the impact of the proposed stream protection rule. ECSI worked on a team of consultants chosen by the Department of Interior, Office of Surface Mining, Reclamation and Enforcement on the preparation of the Draft EIS. ECSI provided expertise in surface hydrology, groundwater hydrology, mining, and miscellaneous environmental sections of the study. Mr. Gardner coordinated ECSI's efforts on the project.



## KAREN ROSE, EIT

## Project Engineer (EIT)

### Licenses:

Engineering in Training:  
KY#13020

### Education:

Bachelor of Science, Mining  
Engineering - University of  
Kentucky

Rosgen Level I – Fluvial  
Geomorphology for  
Engineers

Rosgen Level II – River  
Morphology & Applications

Rosgen Level III – River  
Assessment & Monitoring

Rosgen Level IV – River  
Restoration & Natural  
Channel Design

Ms. Rose, Senior Project Manager, is responsible for the coordination of environmental permit applications for ECSI. She has completed several courses and seminars related to stability analysis, sediment control, blasting, computer-aided design, stream and ecosystem restoration plans.

### Sediment Control Analysis/Design

Black Mountain, Kentucky

This project involved sediment control analysis and design for a proposed surface mine in an Outstanding Resources Watershed. Ms. Rose completed site studies, surveys, and designs of experimental sediment control structures to decrease/prevent any impact to the biological community from the mining activity.

### Hydrologic/Sedimentologic Analysis and Sediment Ponds Design

Minera Panama SA – Cocle del Norte, Panama

This project involved the hydrologic and sedimentologic analysis and preliminary design of thirteen (13) independent sediment ponds at the port facility associated with the proposed Mina de Cobre Panama copper mine project located on the north coast of the Republic of Panama. Hydrologic analyses were conducted using two different design storms. Pre-development condition analyses were also conducted to allow comparison of the developed-condition pond discharge rates to existing. Ms. Rose designed the ponds and performed hydrologic and sedimentologic analysis of the ponds using SedCAD modeling software.



## KIM RAPCHAK FERRERO

## Senior CADD Technician

### Training:

Geology, Underground,  
Surface - Carlson Modules  
OSHA Standards for the  
Construction Industry  
OSHA Standards for General  
Industry  
American Safety and Health  
Institute (ASHI)  
Adult/Pediatric CPR  
ASHI First Aid

Ms. Ferrero has many years of surveying experience gained while operating a land surveying company. In addition to her surveying experience, Ms. Ferrero brings 15 years of automated computer drafting experience to ECSI. Related projects on which Ms. Ferrero has provided technical assistance include:

- Rogers Road Stormwater Improvements, Lexington-Fayette Urban County Government – Lexington, KY
- BCTC Parking Lot Expansion – Danville, KY
- Tractor Supply Site Designs – Berea and Williamsburg, KY
- Gateway Community and Technical College Site Design – Boone County, KY
- Laurel County Library Expansion Site Design – London, KY
- Golf Home of Cherry Blossom Infrastructure Design – Georgetown, KY
- Stream Restoration, Nally & Haydon – Lebanon, KY



## ERIC KING

## Senior CAD Technician

### Education:

Central Kentucky Vocational  
Technical School - Drafting  
Lexington Community College  
- General Studies

Mr. King is a CAD Specialist with ECSI. He is responsible for the mapping standards for ECSI and works with Project Managers to ensure timely completion of all AutoCAD work. Researching new GIS related mapping information and data as well as keeping base maps up to date for Kentucky and the surrounding states are also his responsibility. Mr. King works with and trains technical staff and student interns on CAD related mapping. Representative projects that Mr. King has provided CADD or mapping include:



- Rogers Road Stormwater Improvements, Lexington-Fayette Urban County Government – Lexington, KY
- Hydrologic/Sedimentologic Analysis & Sediment Ponds Design for \$6.2B Mina de Cobre Copper Mine, Minera Panama SA – Cocle del Norte, Panama
- Future-Gen - Kentucky's Response to Future-Gen Alliance Request for Potential Sites, Governor's Office of Energy Policy - Frankfort, Kentucky
- Laurel County Public Library Expansion Site Design – London, KY
- Cumulative Impact Assessments for Middle Fork Kentucky River, North Fork Kentucky River, and Licking River Watersheds – Kentucky
- Corridor Mapping, KPDES Permits and SWPPP Plans, Seminole Energy – Kentucky and Tennessee

## RYAN S. DAVENPORT

## Engineering Technician

### Licenses:

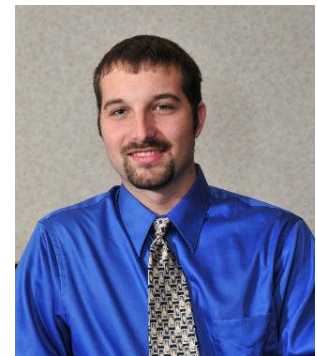
Land Surveyor in Training: KY  
#2004

### Education:

Bachelor in Construction  
Management - Northern  
Kentucky University  
Associate in Applied Science  
and Technology - Cincinnati  
State Technical Community  
College

Mr. Davenport is an Engineering Technician for ECSI and has served as Surveyor on multiple projects. He has an Associate's degree in Applied Science and Technology and an Advanced Surveying certificate from Cincinnati State Technical Community College. He also has a Bachelor's degree in Construction Management from Northern Kentucky University.

Mr. Davenport's experience includes construction layouts in residential and commercial, subdivision layouts, storm water layouts, sanitary sewer layouts, boundary surveys, topographic surveys, ALTA surveys, mortgage surveys, courthouse research, and map preparation. He is well versed in AutoCAD software, Carlson software, Nikon total stations, Topcon total stations, Topcon GPS, Trimble GPS, Trimble robotics, Carlson Surveyor data collectors, TDS data collectors, and HP48 data collectors. Mr. Davenport's related experience includes:



- Wetlands Reserve Program - Pat Arnow Property Boundary Survey, Natural Resources Conservation Service – Somerset, KY
- Tractor Supply Site Design and Surveys – Berea and Williamsburg, Kentucky
- Industrial Mineral Assets Feasibility Study – Multiple Counties, Western Kentucky
- Cumberland College Viaduct Project Surveys – Whitley County, Kentucky

**Abbie Jones, PE, PLS**  
**PRINCIPAL/PROJECT MANAGER**  
**12 YEARS EXPERIENCE**

**EDUCATION**

- ▶ Tennessee Technological University, Bachelor of Civil and Environmental Engineering, 2000

**REGISTRATIONS OR CERTIFICATIONS**

- ▶ Professional Land Surveyor (PLS) KY3639
- ▶ Professional Engineer (PE) KY26780
- ▶ Certified Floodplain Manager (CFM)
- ▶ Roadway Inspector (KPESC RI)

**PUBLICATIONS & AWARDS**

- ▶ Named 2011 KSPE Bluegrass Chapter Nominee for Kentucky Young Engineer of the Year
- ▶ Named Georgia Young Engineer of the Year 2005

**PREVIOUS EMPLOYMENT**

- ▶ 2009-2010 Nesbitt Engineering, Lexington, KY –Engineer and Surveyor
- ▶ 2008-2009 City of Hurst, TX – City Engineer and Floodplain Administrator.
- ▶ 2002-2008 Lowe Engineers, Atlanta, GA Engineer and Surveyor. 2008- Assigned as City Engineer to Milton, GA
- ▶ 2000-2002 Pond & Company, Atlanta, GA Engineer

Abbie has worked in the engineering and survey industry for 14 years, working in both the public and private sectors. She has quickly become acclimated to her new home as she was honored as the 2011 Bluegrass Chapter Nominee for Young Engineer of the year for KSPE.

Abbie has experience in the planning, survey, design and maintenance perspectives of transportation. She knows that including field operations staff early in the planning process helps create a more comprehensive solution. Abbie's experience is especially strong in highly urbanized areas with multimodal design components. She has managed the GIS System for an agency and understands uniquely how to gain more stakeholder involvement.

**FEMA MITIGATION PROJECT – UNIVERSITY OF KENTUCKY**

Project surveyor for a floodplain mitigation design project. Phase 1 included approximately 10 acres, nearly 1000 linear feet of stream cross sections, 5 detention ponds, extensive utility locates, and 25 foot grid for the topographic survey.

**AUTHOR FOR HIGHWAY DESIGN GUIDANCE MANUAL, KTC-KYTC.**

Project manager for the HDGM manual update of survey chapters and related district training that is currently underway.

**HOUSEHOLD HAZARDOUS WASTE FACILITY, LEXINGTON, KY**

Project surveyor for one acre of critical infrastructure and topographic survey with very quick turnaround. Unique site features included avoidance of the fatalities impound yard when collecting manhole information, and a high volume dump truck route.

**CALVARY BAPTIST CHURCH ALTA/ASCM SURVEY, LEXINGTON, KY**

Project surveyor for six acres of 38 original platted lots in historic downtown. Extensive boundary research and field work were required for this urban campus. The details of each wall, numbered parking space, building use, and myriad of zoning were complex, but shown in a clear

manner.

**Adam Bender-Sanders, EIT**  
 Graduate Engineer

**EDUCATION**

- ▶ BS, Civil Engineering, 2011
- ▶ University of Kentucky

Adam has a strong foundation of traffic data analysis. He processes traffic volume data and turning movement. Adam has quickly learned several traffic analysis programs and is very adept at using raw and binary files. He is also proficient in ArcGIS and CADD packages. Adam is detail-oriented and helps keep large data collection projects on track. He has also developed automated programs to combine and review data along corridors.

**Brandon Shelley, EIT**  
 Graduate Engineer

**EDUCATION**

- ▶ BS, Civil Engineering, 2010
- ▶ University of Louisville
- ▶ MS, Civil Engineering, 2011
- ▶ University of Louisville

Mr. Shelley has over 4 years of design and analysis experience including roadway design projects ranging from alignment corrections on small two lane rural roads to the maintenance of traffic design for high volume three lane interstates, conducting traffic counts and producing traffic impact studies for small residential neighborhood esthetics projects up to large commercial thoroughfares, and traffic signal designs.



### **Local Office Participation**

**ECSI, LLC** will complete this project utilizing personnel located exclusively in our Lexington, Kentucky headquarters where we currently employ approximately 25 employees. ECSI was formed in 1983 by our current President/CEO, Steve Gardner, as a Lexington-based firm. During the past 30 years, ECSI has continually maintained a fully-staffed office in Lexington while expanding the firm's reach with branch offices in Pikeville, Corbin, Owensboro and Marion, Kentucky; South Williamson, West Virginia; Lawrenceville, Illinois; and Blacksburg, Virginia.

Key ECSI personnel assigned to manage and complete projects under this contract have spent their entire professional careers working in Lexington. Fred Eastridge, Douglas Mynear and Steve Gardner each have over 35 years of engineering experience in work experience in Lexington, including numerous projects with the LFUCG.

**Abbie Jones Consulting**, our DBE partner, will also be operating out of their Lexington office.

Our percentage of local office utilization therefore totals 100% for each firm.

## **DBE Involvement**

ECSI is teaming with Abbie Jones Consulting (AJC) for this contract. AJC is a Lexington-based DBE Professional Land Survey and Civil Engineering firm. ECSI will use AJC for all field surveys associated with this contract. ECSI is aware of LFUCG's requirement for DBE assignments to equal or exceed 10% of the overall contract value, and will assign additional tasks to AJC should the needed field survey work amount to less than 10%.

ECSI has recently worked with AJC on the Rogers Road Stormwater Project, and have also teamed with AJC for surveys on a Natural Resources Conservation Services master service agreement.

AJC was formed in May 2011 with a vision to provide surveying, engineering, and training. This clear understanding of the end user drives both data collection methods and deliverables while providing precise data for engineers, GIS managers, and government officials. AJC's clear understanding how survey information will ultimately be used on project designs provides teammates and clients with on-time, within-budget solutions. AJC has been DBE certified by the Kentucky Transportation Cabinet; Tennessee Department of Transportation; Lexington and Louisville.

AJC fully understands land surveying techniques and is very knowledgeable of the Lexington Fayette Urban County area. Ms. Jones is co-author and project manager for the surveying training courses under development for each KYTC district office. AJC staff has extensive experience in Fayette County including two recent LFUCG surveys. Currently, AJC employs two licensed surveyors, one who is also an engineer, a senior party chief, an Engineer-In-Training, and a rod person. AJC uses VRS RTK technology connected to the KYCORS network when appropriate for quick yet accurate field work. Traditional methods for topography, leveling, staking, and other survey tasks are also part of AJC's capabilities. AJC crews are familiar with hydrographic surveying using a variety of techniques with traditional waders, kayaks, and shallow draft boats. AJC is very familiar with easements, property descriptions, boundary surveys, and ALTA/ACSM surveys. AJC staff works in both AutoCAD and Microstation platforms to meet the various needs of our agency clients.

AJC provides sustainable professional engineering. AJC staff has worked in multiple states and leverages the ideas and thorough knowledge of regulations to benefit our local clients. Additionally, AJC holds certifications in erosion control (KPESC-RI) and floodplain management (CFM).

## **ECSI, LLC and Abbie Jones Consulting**

### **Statement of Hourly Rates**

#### **Classification**

Principal	\$ 200/Hr
Project Manager	\$ 130/Hr
Deputy Project Manager (PE)	\$ 130/Hr
Project Engineers (EIT)	\$ 90/Hr
Engineering Technicians	\$ 70/Hr
Clerical	\$ 50/Hr
Two Man Survey Crew	\$ 110/Hr

Geotechnical Drilling Exploration on a Per Project Basis.

Direct Project Expenses:

Mileage \$ 0.55/Mi.

All Other Travel, Copies, Map Plots, Long Distance Telephone, Direct Project Supplies,  
Postage/Delivery/Overnight, Photos, Etc. Actual Cost + 10%

## AFFIDAVIT

Comes the Affiant, Douglas K. Myneer, and after being first duly sworn, states under penalty of perjury as follows:

1. His/her name is Douglas K. Myneer and he/she is the individual submitting the proposal or is the authorized representative of ECSI, LLC, the entity submitting the proposal (hereinafter referred to as "Proposer").

2. Proposer will pay all taxes and fees, which are owed to the Lexington-Fayette Urban County Government at the time the proposal is submitted, prior to award of the contract and will maintain a "current" status in regard to those taxes and fees during the life of the contract.

3. Proposer will obtain a Lexington-Fayette Urban County Government business license, if applicable, prior to award of the contract.

4. Proposer has authorized the Division of Central Purchasing to verify the above-mentioned information with the Division of Revenue and to disclose to the Urban County Council that taxes and/or fees are delinquent or that a business license has not been obtained.

5. Proposer has not knowingly violated any provision of the campaign finance laws of the Commonwealth of Kentucky within the past five (5) years and the award of a contract to the Proposer will not violate any provision of the campaign finance laws of the Commonwealth.

6. Proposer has not knowingly violated any provision of Chapter 25 of the Lexington-Fayette Urban County Government Code of Ordinances, known as "Ethics Act."

**Continued on next page**



7. Proposer acknowledges that "knowingly" for purposes of this Affidavit means, with respect to conduct or to circumstances described by a statute or ordinance defining an offense, that a person is aware or should have been aware that his conduct is of that nature or that the circumstance exists.

Further, Affiant sayeth naught.

Douglas Mynear

STATE OF Kentucky

COUNTY OF Fayette

The foregoing instrument was subscribed, sworn to and acknowledged before me

by Douglas K. Mynear on this the 24th day  
of March, 2014.

My Commission expires: 8/21/17

Dwan G. Shaw  
NOTARY PUBLIC, STATE AT LARGE

# **AFFIRMATIVE ACTION PLAN**



**ECSI, LLC**  
**340 South Broadway, Suite 200**  
**Lexington, KY 40508**  
**Phone 859-233-2103**  
**Fax 859-259-3394**

**ECSI, LLC.  
340 South Broadway, Suite 200  
Lexington, KY 40508**

**AAP Year Date: January, 2014 to December, 2014**

**Employer Identification Number: 27-3277647**

**Affirmative Action Contact: J. Steven Gardner, PE, PS  
President/CEO  
ECSI, LLC  
340 South Broadway, Suite 200  
Lexington, KY 40508  
Phone 859-233-2103  
Fax 859-259-3394**

Signed:   
\_\_\_\_\_  
**J. Steven Gardner, PE, PS  
President/CEO**

**Commitment to Equal Employment Opportunity (EEO)**

It is the policy of ECSI, LLC (ECSI) to be an equal opportunity employer. In keeping with this policy, ECSI continues to recruit, hire, train and promote into all job levels the most qualified persons regardless of race, color, religion, gender, marital status, veteran status, disability, national origin, ancestry, age, family care leave status, sexual orientation, or any other characteristic protected by law. ECSI also administers all other personnel matters (such as compensation, benefits, transfers, layoffs, company-sponsored training, education, tuition assistance and social and recreational programs) in accordance with company policy. ECSI has developed and implemented procedures to ensure that its employees are not harassed because of their race, color, religion, gender, marital status, veteran status, disability, national origin, ancestry, age, family care leave status, sexual orientation, or any other characteristic protected by law.

**Internal Communication**

ECSI communicates its equal employment opportunity policy internally by:

- Including the policy in the Employee Handbook for ECSI, issuing a copy to each employee
- Conducting meetings with executive, management, and supervisory personnel to explain the intent of the policy, the president's intentions, and responsibilities for each management individual for effective implementation
- Explaining the policy thoroughly in employee orientation and any subsequent management training programs

**Responsibility for Implementation**

J. Steven Gardner, PE, PS, President/CEO of ECSI, has the overall responsibility to implement ECSI's equal opportunity policy. Coordination of responsibilities has been assigned to Susan Shaw, Human Resources for ECSI. In addition, Doug Mynear, PE, Vice President for ECSI's Lexington office; Mr. Andy Willis, PE, PS, Senior VP of ECSI's Eastern offices; Mr. Charlie Reeves, PE, Vice President of the Owensboro office; and Mr. Edmundo Laporte, PE, Manager of the Corbin Office, are responsible for coordination of responsibilities in their respective offices. Mr. Mynear, Mr. Willis, Mr. Laporte, and Mr. Reeves are responsible for identifying any problem areas, working with ECSI employees to arrive at solutions to problems, and keeping management informed of developments in the equal opportunity arena.

**Compliance with Equal Employment Opportunity**

ECSI does not discriminate on the basis of race, color, religion, gender, marital status, veteran status, disability, national origin, ancestry, age, family care leave status, sexual orientation, or any other characteristic protected by law. To this end, ECSI does the following:

- ECSI actively recruits the most qualified person for each job regardless of race, color, religion, gender, marital status, veteran status, disability, national origin, ancestry, age, family care leave status, sexual orientation, or any other characteristic protected by law. Advertisements for all positions are followed by the statement, "Equal Employment Opportunity."
- All written policies clearly state that all policies and practices apply to every employee on an equal basis.

- All employees have equal opportunity for any job for which they are qualified. No distinction is made with regard to race, color, religion, gender, marital status, veteran status, disability, national origin, ancestry, age, family care leave status, sexual orientation, or any other characteristic protected by law when decisions of opportunity, wages, hours, benefits, or other conditions of employment are made.

**Equal Employment Opportunity Policy**

In order to provide equal employment and advancement opportunities to all individuals, employment decisions at ECSI will be based on merit, qualifications, and abilities. ECSI does not discriminate in employment opportunities or practices on the basis of race, color, religion, gender, marital status, veteran status, disability, national origin, ancestry, age, family care leave status, sexual orientation, or any other characteristic protected by law.

ECSI will make reasonable accommodations for qualified individuals with known disabilities unless doing so would result in an undue hardship. ECSI prohibits harassment of any individual on the basis of any characteristic listed above. For information on ECSI's internal policies for addressing complaints of harassment, please refer to ECSI's Employee Handbook.

This policy governs all aspects of employment, including selection, job assignment, compensation, discipline, termination, and access to benefits and training.

Any employee with questions or concerns about any type of discrimination in the workplace is encouraged to bring the issue to the attention of their immediate supervisor. Employees can raise their concerns and make reports without fear of reprisal, harassment, intimidation, threats, coercion or discrimination because they:

1. file a complaint with ECSI or with federal, state, or local agencies,
2. assist or participate in any investigation, compliance review, hearing, or any other activity related to the administration of any federal, state or local equal employment opportunity or affirmative action statute,
3. oppose any act or practice made unlawful by federal, state or local law requiring equal employment opportunity or affirmative action, or
4. exercise any other employment right protected by federal, state or local law or its implementing regulations.

ECSI maintains a reporting system to respond to any specific complaints applicants or employees file with ECSI or the Equal Employment Opportunity office. Overall responsibility for the implementation of the equal employment opportunity program and for affirmative action compliance activities for ECSI is assigned to Doug Mynear, PE; Andy Willis, PE, PS; Edmundo Laporte, PE; and Charlie Reeves, PE who can be reached at (859) 233-2103.

**Outreach Efforts**

In order to locate individuals with the educational back ground and skills needed to work in the civil, environmental, and mining engineering as well as land surveying fields, ECSI employs a variety of outreach methods including:

1. ECSI works with the University of Kentucky's College of Engineering, The University of the Cumberlands, West Virginia University Institute of Technology, Virginia Polytechnic Institute and State University, and Pikeville College to identify, hire, and mentor interested engineering students throughout their college careers.
2. ECSI regularly contacts the following schools when the company has openings: UK, KCTCS, Pikeville College, The University of the Cumberlands, Morehead State, Mayo Technical, Murray State, Western Kentucky University, Virginia Polytechnic Institute and State University, and West Virginia University Institute of Technology.
3. ECSI attends all jobs fairs in the Pikeville area to locate available personnel for the Pikeville office and the Williamson, West Virginia office. These two offices have traditionally been the most difficult to staff due to limited availability in these areas.

**Minority/Women Goals**

Approximately 30% of those in the engineering field are females and 70% are males. At ECSI, 25% of our professional staff is female and 75% is male. With these percentages in mind, ECSI has been pleased with the number of available female professionals and has no specific goals in this area.

In prior years ECSI's minority representation has most often been found in the engineering functions of the company. When contacting the University Of Kentucky College Of Engineering, ECSI has been able to access a talented pool of individuals, many of whom are minorities attracted to the mathematic component of the engineering field. ECSI will continue to hire talented engineers from this program and will look for opportunities to hire minorities in the future.

It is anticipated that ECSI will have need for one additional engineer in the Pikeville office over the course of the coming year. ECSI will look for qualified minorities when hiring for this positions.

## EQUAL OPPORTUNITY AGREEMENT

### The Law

- Title VII of the Civil Rights Act of 1964 (amended 1972) states that it is unlawful for an employer to discriminate in employment because of race, color, religion, sex, age (40-70 years) or national origin.
- Executive Order No. 11246 on Non-discrimination under Federal contract prohibits employment discrimination by contractor and sub-contractor doing business with the Federal Government or recipients of Federal funds. This order was later amended by Executive Order No. 11375 to prohibit discrimination on the basis of sex.
- Section 503 of the Rehabilitation Act of 1973 states:

*The Contractor will not discriminate against any employee or applicant for employment because of physical or mental handicap.*

- Section 2012 of the Vietnam Era Veterans Readjustment Act of 1973 requires Affirmative Action on behalf of disabled veterans and veterans of the Vietnam Era by contractors having Federal contracts.
- Section 206(A) of Executive Order 12086, Consolidation of Contract Compliance Functions for Equal Employment Opportunity, states:

*The Secretary of Labor may investigate the employment practices of any Government contractor or sub-contractor to determine whether or not the contractual provisions specified in Section 202 of this order have been violated.*

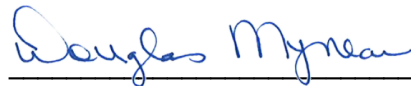
\*\*\*\*\*

The Lexington-Fayette Urban County Government practices Equal Opportunity in recruiting, hiring and promoting. It is the Government's intent to affirmatively provide employment opportunities for those individuals who have previously not been allowed to enter into the mainstream of society. Because of its importance to the local Government, this policy carries the full endorsement of the Mayor, Commissioners, Directors and all supervisory personnel. In following this commitment to Equal Employment Opportunity and because the Government is the benefactor of the Federal funds, it is both against the Urban County Government policy and illegal for the Government to let contracts to companies which knowingly or unknowingly practice discrimination in their employment practices. Violation of the above mentioned ordinances may cause a contract to be canceled and the contractors may be declared ineligible for future consideration.

Please sign this statement in the appropriate space acknowledging that you have read and understand the provisions contained herein. Return this document as part of your application packet.

### Bidders

*I/We agree to comply with the Civil Rights Laws listed above that govern employment rights of minorities, women, Vietnam veterans, handicapped and aged persons.*



Signature

ECSI, LLC

Name of Business

**WORKFORCE ANALYSIS FORM**

Name of Organization: ECSI, LLC

Date: March 20, 2014

Categories	Total	White		Black		Other		Total	
		M	F	M	F	M	F	M	F
Administrators	6	2	4					2	4
Professionals	20	14	3			2	1	16	4
Superintendents	0								
Supervisors	0								
Foremen	0								
Technicians	13	11	1	1		0		12	1
Protective Service	0								
Para-Professionals	0							0	0
Office/Clerical	2		2					0	2
Skilled Craft	0								
Service/Maintenance	0								
<b>Total:</b>	<b>41</b>	<b>27</b>	<b>10</b>	<b>1</b>	<b>0</b>	<b>2</b>	<b>1</b>	<b>30</b>	<b>11</b>

Prepared by: Douglas Mynear, Vice-President  
*Name & Title*



**DIRECTOR, DIVISION OF CENTRAL PURCHASING  
LEXINGTON-FAYETTE URBAN COUNTY GOVERNMENT  
200 EAST MAIN STREET  
LEXINGTON, KENTUCKY 40507**

**NOTICE OF REQUIREMENT FOR AFFIRMATIVE ACTION TO ENSURE EQUAL  
EMPLOYMENT OPPORTUNITIES AND DBE CONTRACT PARTICIPATION**

Notice of requirement for Affirmative Action to ensure Equal Employment Opportunities and Disadvantaged Business Enterprises (DBE) Contract participation. Disadvantaged Business Enterprises (DBE) consists of Minority-Owned Business Enterprises (MBE) and Woman-Owned Business Enterprises (WBE).

The Lexington-Fayette Urban County Government has set a goal that not less than ten percent (10%) of the total value of this Contract be subcontracted to Disadvantaged Business Enterprises, which is made up of MBEs and WBEs. The goal for the utilization of Disadvantaged Business Enterprises as subcontractors is a recommended goal. Contractor(s) who fail to meet such goal will be expected to provide written explanations to the Director of the Division of Purchasing of efforts they have made to accomplish the recommended goal, and the extent to which they are successful in accomplishing the recommended goal will be a consideration in the procurement process. Depending on the funding source, other DBE goals may apply.

For assistance in locating Disadvantaged Business Enterprises Subcontractors contact:

Marilyn Clark, Division of Central Purchasing  
Lexington-Fayette Urban County Government  
200 East Main Street, 3rd Floor, Room 338  
Lexington, Kentucky 40507  
[mclark@lexingtonky.gov](mailto:mclark@lexingtonky.gov)

Firm Submitting Proposal: EC SI, LLC

Complete Address: 340 S. Broadway, Suite 200 Lexington, KY 40508  
Street City Zip

Contact Name: Douglas K. Mynear Title: Vice President, Director, Civil & Environmental

Telephone Number: 859.233.2103 Fax Number: 859.259.3394

Email address: dmynear@engrservices.com

## GENERAL PROVISIONS

1. Each Respondent shall comply with all Federal, State & Local regulations concerning this type of service or good.

The Respondent agrees to comply with all statutes, rules, and regulations governing safe and healthful working conditions, including the Occupational Health and Safety Act of 1970, 29 U.S.C. 650 *et. seq.*, as amended, and KRS Chapter 338. The Respondent also agrees to notify the LFUCG in writing immediately upon detection of any unsafe and/or unhealthful working conditions at the job site. The Respondent agrees to indemnify, defend and hold the LFUCG harmless from all penalties, fines or other expenses arising out of the alleged violation of said laws.

2. Failure to submit ALL forms and information required in this RFP may be grounds for disqualification.
3. Addenda: All addenda, if any, shall be considered in making the proposal, and such addenda shall be made a part of this RFP. Before submitting a proposal, it is incumbent upon each proposer to be informed as to whether any addenda have been issued, and the failure to cover in the bid any such addenda may result in disqualification of that proposal.
4. Proposal Reservations: LFUCG reserves the right to reject any or all proposals, to award in whole or part, and to waive minor immaterial defects in proposals. LFUCG may consider any alternative proposal that meets its basic needs.
5. Liability: LFUCG is not responsible for any cost incurred by a Respondent in the preparation of proposals.
6. Changes/Alterations: Respondent may change or withdraw a proposal at any time prior to the opening; however, no oral modifications will be allowed. Only letters, or other formal written requests for modifications or corrections of a previously submitted proposal which is addressed in the same manner as the proposal, and received by LFUCG prior to the scheduled closing time for receipt of proposals, will be accepted. The proposal, when opened, will then be corrected in accordance with such written request(s), provided that the written request is contained in a sealed envelope which is plainly marked "modifications of proposal".
7. Clarification of Submittal: LFUCG reserves the right to obtain clarification of any point in a bid or to obtain additional information from a Respondent.
8. Bribery Clause: By his/her signature on the bid, Respondent certifies that no employee of his/hers, any affiliate or Subcontractor, has bribed or attempted to bribe an officer or employee of the LFUCG.

9. Additional Information: While not necessary, the Respondent may include any product brochures, software documentation, sample reports, or other documentation that may assist LFUCG in better understanding and evaluating the Respondent's response. Additional documentation shall not serve as a substitute for other documentation which is required by this RFP to be submitted with the proposal,
10. Ambiguity, Conflict or other Errors in RFP: If a Respondent discovers any ambiguity, conflict, discrepancy, omission or other error in the RFP, it shall immediately notify LFUCG of such error in writing and request modification or clarification of the document if allowable by the LFUCG.
11. Agreement to Bid Terms: In submitting this proposal, the Respondent agrees that it has carefully examined the specifications and all provisions relating to the work to be done attached hereto and made part of this proposal. By acceptance of a Contract under this RFP, proposer states that it understands the meaning, intent and requirements of the RFP and agrees to the same. The successful Respondent shall warrant that it is familiar with and understands all provisions herein and shall warrant that it can comply with them. No additional compensation to Respondent shall be authorized for services or expenses reasonably covered under these provisions that the proposer omits from its Proposal.
12. Cancellation: If the services to be performed hereunder by the Respondent are not performed in an acceptable manner to the LFUCG, the LFUCG may cancel this contract for cause by providing written notice to the proposer, giving at least thirty (30) days notice of the proposed cancellation and the reasons for same. During that time period, the proposer may seek to bring the performance of services hereunder to a level that is acceptable to the LFUCG, and the LFUCG may rescind the cancellation if such action is in its best interest.

#### A. Termination for Cause

- (1) LFUCG may terminate a contract because of the contractor's failure to perform its contractual duties
- (2) If a contractor is determined to be in default, LFUCG shall notify the contractor of the determination in writing, and may include a specified date by which the contractor shall cure the identified deficiencies. LFUCG may proceed with termination if the contractor fails to cure the deficiencies within the specified time.
- (3) A default in performance by a contractor for which a contract may be terminated shall include, but shall not necessarily be limited to:
  - (a) Failure to perform the contract according to its terms,

- conditions and specifications;
- (b) Failure to make delivery within the time specified or according to a delivery schedule fixed by the contract;
  - (c) Late payment or nonpayment of bills for labor, materials, supplies, or equipment furnished in connection with a contract for construction services as evidenced by mechanics' liens filed pursuant to the provisions of KRS Chapter 376, or letters of indebtedness received from creditors by the purchasing agency;
  - (d) Failure to diligently advance the work under a contract for construction services;
  - (e) The filing of a bankruptcy petition by or against the contractor; or
  - (f) Actions that endanger the health, safety or welfare of the LFUCG or its citizens.

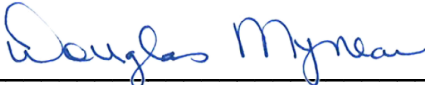
#### B. At Will Termination

Notwithstanding the above provisions, the LFUCG may terminate this contract at will in accordance with the law upon providing thirty (30) days written notice of that intent, Payment for services or goods received prior to termination shall be made by the LFUCG provided these goods or services were provided in a manner acceptable to the LFUCG. Payment for those goods and services shall not be unreasonably withheld.

13. **Assignment of Contract:** The contractor shall not assign or subcontract any portion of the Contract without the express written consent of LFUCG. Any purported assignment or subcontract in violation hereof shall be void. It is expressly acknowledged that LFUCG shall never be required or obligated to consent to any request for assignment or subcontract; and further that such refusal to consent can be for any or no reason, fully within the sole discretion of LFUCG.
14. **No Waiver:** No failure or delay by LFUCG in exercising any right, remedy, power or privilege hereunder, nor any single or partial exercise thereof, nor the exercise of any other right, remedy, power or privilege shall operate as a waiver hereof or thereof. No failure or delay by LFUCG in exercising any right, remedy, power or privilege under or in respect of this Contract shall affect the rights, remedies, powers or privileges of LFUCG hereunder or shall operate as a waiver thereof.
15. **Authority to do Business:** The Respondent must be a duly organized and authorized to do business under the laws of Kentucky. Respondent must be in good standing and have full legal capacity to provide the services specified under this Contract. The Respondent must have all necessary right and lawful authority to enter into this Contract for the full term hereof and that proper corporate or other action has been duly taken authorizing the Respondent to enter into this

Contract. The Respondent will provide LFUCG with a copy of a corporate resolution authorizing this action and a letter from an attorney confirming that the proposer is authorized to do business in the State of Kentucky if requested. All proposals must be signed by a duly authorized officer, agent or employee of the Respondent.

16. **Governing Law:** This Contract shall be governed by and construed in accordance with the laws of the Commonwealth of Kentucky. In the event of any proceedings regarding this Contract, the Parties agree that the venue shall be the Fayette County Circuit Court or the U.S. District Court for the Eastern District of Kentucky, Lexington Division. All parties expressly consent to personal jurisdiction and venue in such Court for the limited and sole purpose of proceedings relating to this Contract or any rights or obligations arising thereunder. Service of process may be accomplished by following the procedures prescribed by law.
17. **Ability to Meet Obligations:** Respondent affirmatively states that there are no actions, suits or proceedings of any kind pending against Respondent or, to the knowledge of the Respondent, threatened against the Respondent before or by any court, governmental body or agency or other tribunal or authority which would, if adversely determined, have a materially adverse effect on the authority or ability of Respondent to perform its obligations under this Contract, or which question the legality, validity or enforceability hereof or thereof.
18. Contractor understands and agrees that its employees, agents, or subcontractors are not employees of LFUCG for any purpose whatsoever. Contractor is an independent contractor at all times during the performance of the services specified.
19. If any term or provision of this Contract shall be found to be illegal or unenforceable, the remainder of the contract shall remain in full force and such term or provision shall be deemed stricken.

  
\_\_\_\_\_  
Signature

25-MAR-2014  
\_\_\_\_\_  
Date

Attachment 1

**Project Team Location(s)**

Prime Consultant	Location (City, State)	Date Office Established	Total Number of Employees	No. of Employees expected to work on DOE projects
Headquarters	Š^čā * d } ĚSŸ	FJÌ H	/////////G	//////////A
Local Office				
PM Location	Š^čā * d } ĚSŸ			
<b>SubConsultants</b>				
Name:				
Service Provided				
Headquarters				
Local Office				
Name:				
Service Provided				
Headquarters				
Local Office				
Name:				
Service Provided				
Headquarters				
Local Office				

**Notes:**

1. "Headquarters" refers to the corporate office that provides project support to the local office, if applicable. If support comes from multiple locations, use the blank spaces in the form to provide relevant information.
2. Listing of sub-consultants is optional and should only be provided if the prime consultant considers the sub-consultant(s) services to be essential to meeting the required qualifications. In this event, documentation from the subconsultant(s) shall be submitted in the SOQ that provides a commitment to be a part of the prime consultant's team in providing the stated services. In such cases, for the purpose of evaluating the proposals, committed sub-consultants will be considered to be part of the prime consultant's workforce. Prime consultants face potential disqualification from future work if DOE finds that the identified sub-consultants are not being utilized to deliver assigned work products.



# CERTIFICATE OF LIABILITY INSURANCE

DATE (MM/DD/YYYY)  
2/7/2014

THIS CERTIFICATE IS ISSUED AS A MATTER OF INFORMATION ONLY AND CONFERS NO RIGHTS UPON THE CERTIFICATE HOLDER. THIS CERTIFICATE DOES NOT AFFIRMATIVELY OR NEGATIVELY AMEND, EXTEND OR ALTER THE COVERAGE AFFORDED BY THE POLICIES BELOW. THIS CERTIFICATE OF INSURANCE DOES NOT CONSTITUTE A CONTRACT BETWEEN THE ISSUING INSURER(S), AUTHORIZED REPRESENTATIVE OR PRODUCER, AND THE CERTIFICATE HOLDER.

**IMPORTANT:** If the certificate holder is an ADDITIONAL INSURED, the policy(ies) must be endorsed. If SUBROGATION IS WAIVED, subject to the terms and conditions of the policy, certain policies may require an endorsement. A statement on this certificate does not confer rights to the certificate holder in lieu of such endorsement(s).

<b>PRODUCER</b> <b>Unison Insurance Group, Inc.</b> <b>P.O. Box 310</b> <b>Whitesburg, KY 41858</b>	<b>CONTACT NAME:</b> <b>PHONE (A/C, No. Ext): 606-632-3600</b>   <b>FAX (A/C, No): 606-632-2150</b> <b>E-MAIL ADDRESS:</b> <input type="checkbox"/> <b>PRODUCER CUSTOMER ID #:</b>														
<b>INSURED</b> <b>ECSI, LLC</b>  <b>340 S. Broadway, Suite 200</b> <b>Lexington, KY 40508</b>	<table style="width: 100%; border-collapse: collapse;"> <tr> <td style="text-align: center; border-bottom: 1px solid black;"><b>INSURER(S) AFFORDING COVERAGE</b></td> <td style="text-align: center; border-bottom: 1px solid black;"><b>NAIC#</b></td> </tr> <tr> <td><b>INSURER A : Aspen Specialty Insurance Co</b></td> <td></td> </tr> <tr> <td><b>INSURER B : American Mining Insurance Co.</b></td> <td></td> </tr> <tr> <td><b>INSURER C :</b></td> <td></td> </tr> <tr> <td><b>INSURER D :</b></td> <td></td> </tr> <tr> <td><b>INSURER E :</b></td> <td></td> </tr> <tr> <td><b>INSURER F :</b></td> <td></td> </tr> </table>	<b>INSURER(S) AFFORDING COVERAGE</b>	<b>NAIC#</b>	<b>INSURER A : Aspen Specialty Insurance Co</b>		<b>INSURER B : American Mining Insurance Co.</b>		<b>INSURER C :</b>		<b>INSURER D :</b>		<b>INSURER E :</b>		<b>INSURER F :</b>	
<b>INSURER(S) AFFORDING COVERAGE</b>	<b>NAIC#</b>														
<b>INSURER A : Aspen Specialty Insurance Co</b>															
<b>INSURER B : American Mining Insurance Co.</b>															
<b>INSURER C :</b>															
<b>INSURER D :</b>															
<b>INSURER E :</b>															
<b>INSURER F :</b>															

**COVERAGES**                      **CERTIFICATE NUMBER:**                      **REVISION NUMBER:**

THIS IS TO CERTIFY THAT THE POLICIES OF INSURANCE LISTED BELOW HAVE BEEN ISSUED TO THE INSURED NAMED ABOVE FOR THE POLICY PERIOD INDICATED. NOTWITHSTANDING ANY REQUIREMENT, TERM OR CONDITION OF ANY CONTRACT OR OTHER DOCUMENT WITH RESPECT TO WHICH THIS CERTIFICATE MAY BE ISSUED OR MAY PERTAIN, THE INSURANCE AFFORDED BY THE POLICIES DESCRIBED HEREIN IS SUBJECT TO ALL THE TERMS, EXCLUSIONS AND CONDITIONS OF SUCH POLICIES. LIMITS SHOWN MAY HAVE BEEN REDUCED BY PAID CLAIMS.

INSR LTR	TYPE OF INSURANCE	ADDL INSR	SUBR WVD	POLICY NUMBER	POLICY EFF (MM/DD/YYYY)	POLICY EXP (MM/DD/YYYY)	LIMITS
<b>A</b>	GENERAL LIABILITY <input checked="" type="checkbox"/> COMMERCIAL GENERAL LIABILITY <input type="checkbox"/> CLAIMS-MADE <input checked="" type="checkbox"/> OCCUR  GEN'L AGGREGATE LIMIT APPLIES PER: <input type="checkbox"/> POLICY <input type="checkbox"/> PRO-JECT <input type="checkbox"/> LOC			<b>ERA7RMU13</b>	<b>12/24/13</b>	<b>12/24/14</b>	EACH OCCURRENCE \$ <b>1,000,000</b> DAMAGE TO RENTED PREMISES (Ea occurrence) \$ <b>500,000</b> MED EXP (Any one person) \$ <b>25,000</b> PERSONAL & ADV INJURY \$ <b>1,000,000</b> GENERAL AGGREGATE \$ <b>2,000,000</b> PRODUCTS - COMP/OP AGG \$ <b>2,000,000</b> \$
<b>B</b>	AUTOMOBILE LIABILITY <input checked="" type="checkbox"/> ANY AUTO <input type="checkbox"/> ALL OWNED AUTOS <input type="checkbox"/> SCHEDULED AUTOS <input type="checkbox"/> HIRED AUTOS <input type="checkbox"/> NON-OWNED AUTOS			<b>AMBA003978</b>	<b>12/24/13</b>	<b>12/24/14</b>	COMBINED SINGLE LIMIT (Ea accident) \$ <b>1,000,000</b> BODILY INJURY (Per person) \$ BODILY INJURY (Per accident) \$ PROPERTY DAMAGE (Per accident) \$ \$ \$
<b>A</b>	<input checked="" type="checkbox"/> UMBRELLA LIAB <input type="checkbox"/> OCCUR <input type="checkbox"/> EXCESS LIAB <input type="checkbox"/> CLAIMS-MADE  <input checked="" type="checkbox"/> DEDUCTIBLE RETENTION \$ <b>10,000</b>			<b>EXA7V3613</b>	<b>12/24/13</b>	<b>12/24/14</b>	EACH OCCURRENCE \$ <b>4,000,000</b> AGGREGATE \$ <b>4,000,000</b> \$ \$
<b>B</b>	WORKERS COMPENSATION AND EMPLOYERS' LIABILITY ANY PROPRIETOR/PARTNER/EXECUTIVE OFFICER/MEMBER EXCLUDED? (Mandatory in NH) If yes, describe under DESCRIPTION OF OPERATIONS below <div style="text-align: right;"> <input type="checkbox"/> Y/N    N/A         </div>			<b>AMWC008946</b>	<b>08/01/13</b>	<b>08/01/14</b>	<input checked="" type="checkbox"/> WC STATU-TORY LIMITS <input type="checkbox"/> OTH-ER E.L. EACH ACCIDENT \$ <b>1,000,000</b> E.L. DISEASE - EA EMPLOYEE \$ <b>1,000,000</b> E.L. DISEASE - POLICY LIMIT \$ <b>1,000,000</b>
<b>A</b>	<b>Professional Liability</b> <b>Claims Made Coverage</b>			<b>ERA7RMU13</b>	<b>12/24/13</b>	<b>12/24/14</b>	<b>Per Occurrence - \$1,000,000</b> <b>Aggregate - \$2,000,000</b>

DESCRIPTION OF OPERATIONS / LOCATIONS / VEHICLES (Attach ACORD 101, Additional Remarks Schedule, if more space is required)

<b>CERTIFICATE HOLDER</b>	<b>CANCELLATION</b>
	SHOULD ANY OF THE ABOVE DESCRIBED POLICIES BE CANCELLED BEFORE THE EXPIRATION DATE THEREOF, NOTICE WILL BE DELIVERED IN ACCORDANCE WITH THE POLICY PROVISIONS.
	AUTHORIZED REPRESENTATIVE 





Lexington-Fayette Urban County Government  
DEPARTMENT OF FINANCE & ADMINISTRATION

Jim Gray  
Mayor

William O'Mara  
Commissioner

**ADDENDUM #1**

RFP Number: **#13-2014**

Date: March 3, 2014

Subject: **Request for Qualifications for  
Professional Engineering Services**

Please address inquiries to:  
Theresa Maynard (859) 258-3320

**TO ALL PROSPECTIVE BIDDERS:**

Please be advised of the following clarifications to the above referenced RFP:

*Paragraph two on page one should read as follows and agree with the date on the website:*

“Sealed proposals will be received in the Division of Central Purchasing, Room 338, Government Center, 200 East Main Street, Lexington, KY, 40507, until **2:00 PM**, prevailing local time, on **March 26, 2014.**”

*Paragraph one on page two should read as follows:*

**Deadline for questions after the Pre-proposal meeting shall be Tuesday, MARCH 12<sup>th</sup>, 2014 at 2:00 PM local time.**

Todd Slatin, Director  
Division of Central Purchasing

All other terms and conditions of the RFP and specifications are unchanged. This letter should be signed, attached to and become a part of your RFP.

**COMPANY:** ECSI, LLC

**ADDRESS:** 340 S. Broadway, Suite 200, Lexington, KY 40508

**SIGNATURE OF PROPOSER:**



Lexington-Fayette Urban County Government  
DEPARTMENT OF FINANCE & ADMINISTRATION

Jim Gray  
Mayor

William O'Mara  
Commissioner

**ADDENDUM #2**

RFP Number: **#13-2014**

Date: March 7, 2014

Subject: **Request for Qualifications for  
Professional Engineering Services**

Please address inquiries to:  
Theresa Maynard (859) 258-3320

**TO ALL PROSPECTIVE BIDDERS:**

Please be advised of the following clarifications to the above referenced RFP:

*Disregard Addendum #1 issued on this page earlier today, March 7, 2014. That addendum was for RFP #14-2014 Request for Qualifications – Supplemental Legal Services and posted to the page for RFP #13-2014 in error.*

Todd Slatin, Director  
Division of Central Purchasing

All other terms and conditions of the RFP and specifications are unchanged. This letter should be signed, attached to and become a part of your RFP.

**COMPANY:** ECSI, LLC

**ADDRESS:** 340 S. Broadway, Suite 200, Lexington, KY 40508

**SIGNATURE OF PROPOSER:** Douglas Myneer



Lexington-Fayette Urban County Government  
DEPARTMENT OF FINANCE & ADMINISTRATION

Jim Gray  
Mayor

William O'Mara  
Commissioner

**ADDENDUM #3**

RFP Number: **#13-2014**

Date: March 17, 2014

Subject: **Request for Qualifications for  
Professional Engineering Services**

Please address inquiries to:  
Theresa Maynard (859) 258-3320

**TO ALL PROSPECTIVE BIDDERS:**

Please be advised of the following clarifications to the above referenced RFP:

- Sign in sheets from March 10<sup>th</sup>, 2014 Pre-Proposal Meeting attached
- Questions and Answers attached

Todd Slatin, Director  
Division of Central Purchasing

All other terms and conditions of the RFP and specifications are unchanged. This letter should be signed, attached to and become a part of your RFP.

**COMPANY:** ECSI, LLC

**ADDRESS:** 340 South Broadway, Suite 200, Lexington, KY 40508

**SIGNATURE OF PROPOSER:**

## SIGN-IN SHEET

RFP #13-2014 Request for Qualifications for Professional Engineering Services  
 March 10<sup>th</sup>, 10:00 am 101 E Vine St, Lexington KY 40507

Representative	Company Name	Phone #	Email Address
Theresa Maynard	LFUCG – Central Purchasing	258-3320	theresam@lexingtonky.gov
CHASE WRIGHT	STRAND	225-8500	chase.wright@strand.com
Mark Astin	strand	225-8500	Mark.astin@strand.com
MICHAEL DAVIS	STRAND ASSOCIATES	225.8500	mike.davis@strand.com
Fred Eastridge	ECSE, LLC	233-2103	feastridge@engr-services.com
Arlen Sandlin	Parsons Brinckerhoff	245-3867	sandlin@pbworld.com
Paul WARSEN	THELEN ASSOCIATES	226-0761	PWARSEN@thelensac.com
Laura Mize	Lockner	224-4476	LMize@hwlockner.com
ABBIE JONES	ABBIE JONES CONSULTING	859.559.3443	abbie@abbie-jones.com
Greg Isaacs	Palmer	859 389 9293	gisaacs@palmer.net.com
Kevin Damron	Palmer	859.537.6657	kdamron@palmer.net.com
MIKE MERRIMAN	S&ME	859-293-5518	M.MERRIMAN@S&MEINC.COM
Megan Kendall	Bell Engineering	859-278-5412	mkendall@hkbell.com
David Schrader	Bell Engineering	859-278-5412	dschrader@hkbell.com
JUSTIN ANDERSON	HDR ENGINEERING	859-583-0732	justin.anderson@hdrinc.com
Jihad Hallany	Vision Engineering	859-559-0516	Jhallany@visionengr.com
Ethan Buell	BFMJ, INC	859.278.5050	e.buell@bfmj.com
Nicole Povelich	BFMJ Structural Eng	859-278-5050	n.povelich@bfmj.com
BRAD FRAZIER	LFUCG ENG	859-258-3410	bfrazier@lexingtonky.gov
Jason Anslie	L.F. Legregg	859-252-7558	jainslie@legregg.com
WALTER BOWMAN	W. Bowman Assoc.	859 619 0129	waltbowman@twc.com





## Questions for RFP #13-2014

Is it possible to expand somewhat on what each contract will entail. For example, contract 2 could be construed to merely entail negotiation and acquisition of properties which would not require professional engineering services. It could also be construed to require Professional surveying services. Please expand if possible.

**ANSWER:** At this point, the Contract descriptions must be general and fairly broad. But as an individual project is brought forward, a more detailed scope of required services will be developed for that project.

---

Is the proposal to be submitted as a single proposal or individual proposals for each contract?

**ANSWER:** The responses shall be a single proposal with a section for each Contract being responded to by the vendor, and clearly titled as a response to the Contract number, 1 through 8. Vendors may respond to one, some, or all Contract 1 through 8.

A listing acknowledging which of the Contract numbers the vendor's response contains shall be listed in the Table of Contents of the Vendor's Response.

If the SOQ is to be submitted as a single SOQ, should submit resumes in one tab/section for all the SOQ's or submit resumes for each individual Contract with the section covering that Contract.

**ANSWER:** If the vendor response contains sections for more than one of the Contracts number 1 through 8, they need to only include one set of resumes. The response for each individual Contract shall contain an organizational chart showing the individuals involved in that particular Contract response, and whose resume is included in the resume section of the total Response.

---

During the pre-proposal meeting, it was mentioned that regardless of the number of contracts you were requesting prequalification on, one document was to be submitted for all. Section 4 (page 4) of the RFQ states that each firm responding to this RFQ shall submit individual SOQ's for each project category for which they request to be prequalified. Are we to submit 1 document (with 1 master hardcopy, 7 duplicates and 1 electronic version) including information on all contracts prequalification is being requested on or are we to submit individual documents (with 1 master hardcopy, 7 duplicates and 1 electronic version) for each contract we are requesting prequalification on?

**ANSWER:** ONE document with sections for each contract you are responding to, with them listed in the Table of Contents. (see above)

If 1 document is to be submitted for all contracts prequalification is being requested on, are the page limits for contract specific information then multiplied by the number of contracts? For example, if we plan on submitting on 3 contracts, are we then allowed 3 pages for list of clients for which similar work has been performed in order to discuss 3 contracts or is it still a limit of 1 page? Does the same apply for qualifications for the specific type of contract, project team and list of similar projects?

**ANSWER:** It is still a limit of 1 page per contract response, and the same applies for qualifications, you may list the team on each section you're responding to, but you only need to submit the resumes once. (see above)

- 
1. What forms are actually required for this qualifications package? **Specifically:**
    - a. If our firm meets the DBE goal with our subconsultant partner(s), are we still required to fill out the Good Faith Efforts form?
    - b. Are the MWDBE substitution, MWDBE quote summary form, or subcontractor monthly payment report needed for this proposal or are they documents that would be used once under contract/letter agreement? Please confirm whether these forms should be included with our qualifications package.

**ANSWER:** If the vendor meets the goals for the project, firms are still required to return the Good Faith Efforts form and check all the things they did to find MWBEs for the job. The Quote Summary Form is part of the documentation needed if the vendor does not meet the goals for the project. It is not a required form for submittals. The Substitution Form and the Monthly Payment Report are documents that will be used by the company selected to work on the project.

2. Do the one-page resumes count against the 6-page count in section 3 Project Team? May we include these resumes as an appendix?

**ANSWER:** If the organizational chart varies between Contracts, provide individual charts with each Contract section. The Project Team Section (No. 3) should be held to 6 pages maximum.

3. Please confirm how many copies are needed. Page 35 of the RFP PDF says "six (8)" (contradicts), while RFP PDF page 37 indicates a total resulting in 8.

**ANSWER:** Re: Page 35: There are a total of EIGHT contracts being solicited in this RFQ.

The Proposer must submit one (1) master (hardcopy), (1) electronic version in PDF format on a flashdrive or CD and seven (7) duplicates (hardcopies) of their proposal for evaluation purposes.

4. Is there a maximum letter agreement/assignment amount for projects released under this contract? In other words, is it possible that LFUCG will need to advertise some projects separately from these contracts that exceed a certain dollar amount?

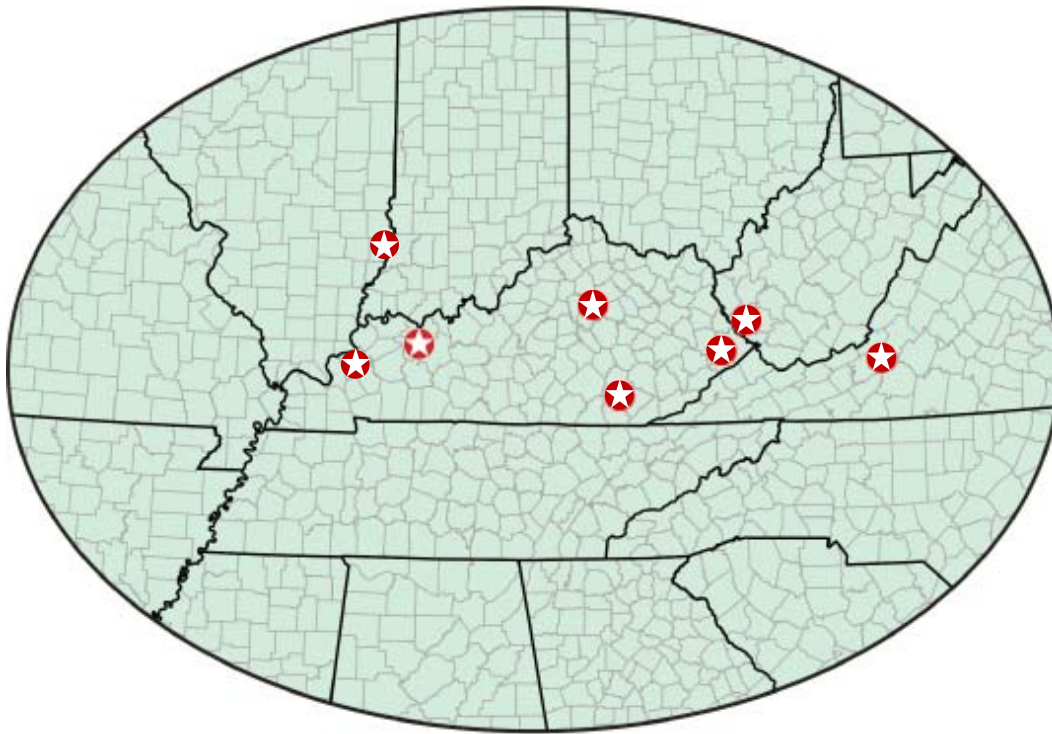
**ANSWER:** No fee cap has been set for total project assignments to any single consultant, nor has a project dollar limit been set. However, we anticipate that projects of considerable size which will utilize federal funding will need to have separate, individual RFQ's. At the other extreme, in the case of a very small project with an anticipated small consulting fee (for instance say less than \$20,000), LFUCG reserves the right to simply offer the work to the firm at the top of the list rather than ask three firms to expend inordinate resources in working up bids.





**ECSI**,LLC

ENGINEERS ■ CONSULTANTS ■ SCIENTISTS ■ INTERNATIONAL



## Mission Statement

“With problems there are always opportunities.

We view problems and ECSI’s ability to solve them a major asset. Looking for solutions that create value and opportunity is our primary mission.”

J. Steven Gardner, P.E.  
President & CEO

### HEADQUARTERS

340 South Broadway  
Suite 200  
Lexington, KY 40508  
Phone: 859.233.2103  
Fax: 859.259.3394  
[www.engrservices.com](http://www.engrservices.com)

#### BRANCH LOCATIONS

##### KENTUCKY

1005 South Main Street  
Suite 102  
Corbin, KY 40701  
Phone: 606.526.6396  
Fax: 606.526.6398

312 W. Gum Street  
Marion, KY 42064  
Phone: 270-967-9019

PO Box 22462  
Owensboro, KY 42304  
Phone: 270.683.8030

308 Hambley Boulevard  
Pikeville, KY 41501  
Phone: 606.432.2443  
Fax: 606.432.2486

##### ILLINOIS

PO Box 575  
Lawrenceville, IL 62439  
Phone: 618-707-2625  
Fax: 859-259-3394

##### VIRGINIA

1715 Pratt Dr., Suite 2600  
Blacksburg, VA 24060  
Phone: 304-661-6551

##### WEST VIRGINIA

1628 W. Third Avenue  
Williamson, WV 25661  
Phone: 304.235.1885  
Fax: 304.235.1887

#### AN E&E GLOBAL PARTNER

Ecology and Environment, Inc.  
[www.ene.com](http://www.ene.com)

