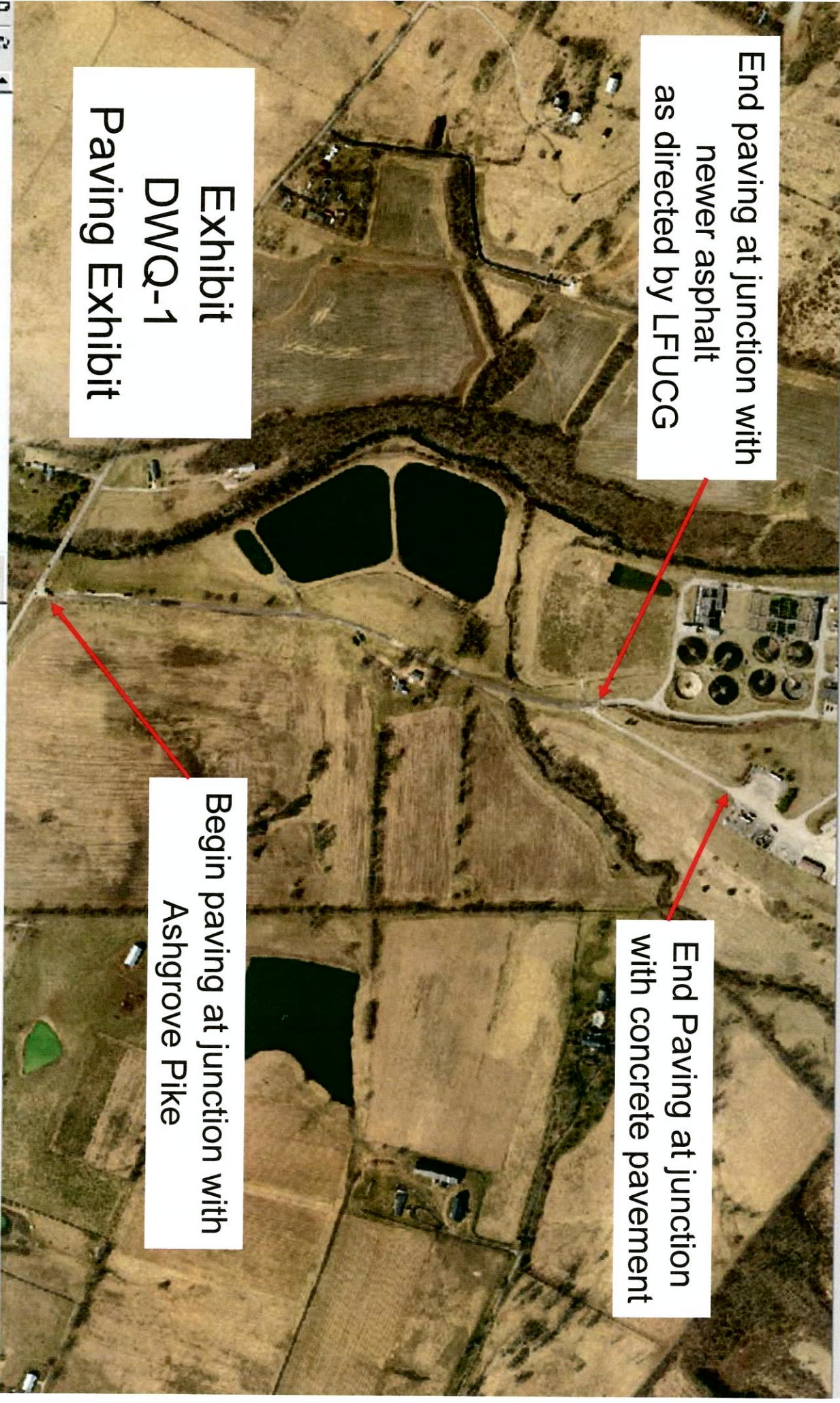


End paving at junction with
newer asphalt
as directed by LFUCG

End Paving at junction
with concrete pavement

Begin paving at junction with
Ashgrove Pike

Exhibit
DWQ-1
Paving Exhibit



rd to the next extent of the map layout

1569723.96 159951.75 Feet

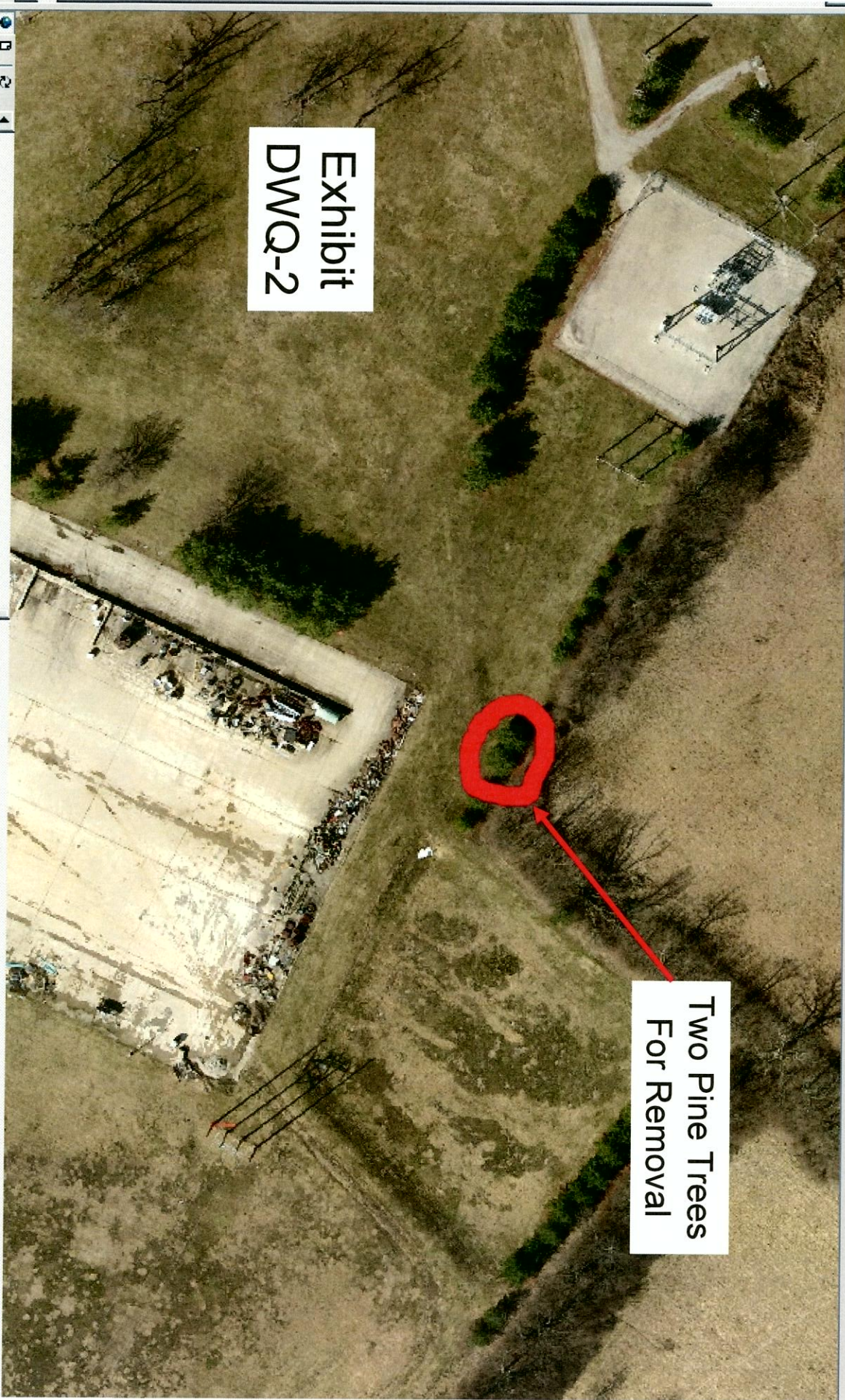


Exhibit
DWQ-2

Two Pine Trees
For Removal

**Exhibit DWQ-3
Scope of Work
Resurfacing
West Hickman Plant Road**

General

The asphalt concrete paving work is limited to construction of an additional wearing course overlay within the limits shown on Exhibit DWQ-1 to a depth of 1½ inches. Base course work is not included in this scope. There shall be no milling work other than what is necessary to provide a smooth transition between the new surface and remaining transitional surfaces in the form of an Edge Key.

Applicable Standards

Any reference to Standard Specifications shall refer to the most recent Edition of Standard Specifications for Road and Bridge Construction with all amendments thereto published by the Kentucky Transportation Cabinet.

Materials and Workmanship: Bituminous Concrete Surface materials and work must conform to the Standard Specifications, including the removal of pavement samples to be tested by an independent laboratory for composition and density to insure quality control. Specific standards include:

Construct asphalt concrete surface course only when atmosphere temperature is above 40 degree F and when existing surface is dry.

Installation: The surface course shall be hot mixed, hot laid bituminous concrete to a minimum compacted depth of 1½ inches, weighing a minimum one hundred and sixty five (165) pounds per square yard. Installation shall include the placement of Tack Oil between the existing bituminous surface and the additional bituminous surface overlay.

Approaches and Tapers – Approaches and tapers shall be acceptably textured. Approaches and tapers shall be transitioned to the existing surface to within +/- 1/8 inch (4 mm).

Warranty

If, within 365 days after the date of completion, any work is found to be defective, Marathon shall promptly, without cost to LFUCG and in accordance to LFUCG's written instructions, either correct such defective work, or if it has be rejected by LFUCG, remove it from the site and replace it with non-defective work. If Marathon fails to comply with the terms of such instructions or an emergency exists where delay could cause serious risk of loss or damage, LFUCG may have the defective work corrected or the rejected work removed and replaced with all direct, indirect and consequential costs of such removal and replacement paid by Marathon.