

**THE LEXINGTON FAYETTE URBAN
COUNTY GOVERNMENT**

BY: _____
ITS: _____

STATE OF KENTUCKY)
COUNTY OF FAYETTE)

The foregoing instrument was subscribed, sworn to and acknowledged before me by
Mike Ball, as Member, for and on behalf of Winthrop, LLC a
Kentucky limited liability company, on this the 30th day of November, 2012.

NOTARY PUBLIC

My commission expires: October 13, 2015

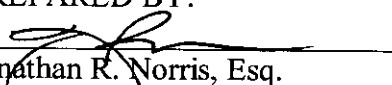
STATE OF KENTUCKY)
COUNTY OF FAYETTE)

The foregoing instrument was subscribed, sworn to and acknowledged before me by
_____, as _____, for and on behalf of the Lexington-
Fayette Urban County Government, on this the ____ day of _____, 2012.

NOTARY PUBLIC

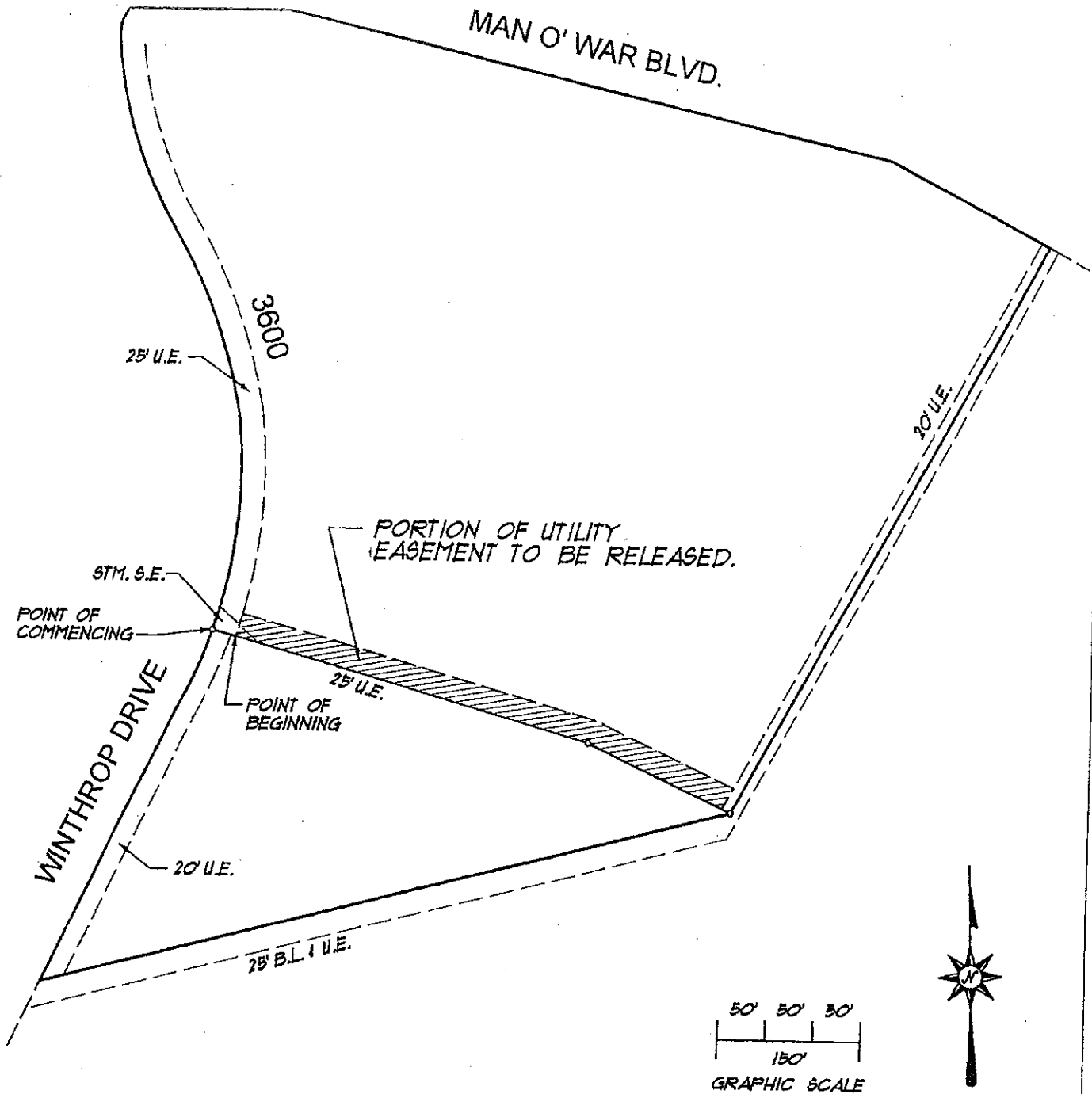
My commission expires: _____

PREPARED BY:



Jonathan R. Norris, Esq.
Ball Homes, LLC
3609 Walden Drive
Lexington, Kentucky 40517
(859) 268-1191

Exhibit "A" (continued)



PARENT DOCUMENT: P.C. "L", SL. 906

EA Partners, PLLC



CIVIL ENGINEERS • LAND SURVEYORS • LANDSCAPE ARCHITECTS
911 WALL STREET
LEXINGTON, KENTUCKY 40513
PHONE (859) 256-9888
FACSIMILE (859) 256-9881

J:\B50\PER_COR\EAASE_RELEASE\EAASE_RELEASE.DGN

EXHIBIT

RELEASE OF
UTILITY EASEMENT
THE GLEN @ LOCHDALE,
UNIT 4
3600 WINTHROP DRIVE
LEXINGTON, KY
MAY 2012

Exhibit "A"
~~EA Partners, PLLC~~

CIVIL ENGINEERS • LAND SURVEYORS • LANDSCAPE ARCHITECTS
3111 WALL STREET
LEXINGTON, KENTUCKY 40513
PHONE (859) 298-9889
FACSIMILE (859) 298-9887

May 9, 2012

Utility Easement Release
The Glen @ Lochdale
3600 Winthrop Drive
Lexington, KY

COMMENCING at a point in the easterly right-of-way line of Winthrop Drive being the southwestern most corner of 3600 Winthrop Drive of record in Plat Cabinet "L", Slide 906 in the Office of the County Clerk of Fayette County, Kentucky; thence S 74°02'24" E, a distance of 25.01 feet to the TRUE POINT OF BEGINNING; thence 25.00 feet along a curve to the left having a radius of 570.00 feet and a chord which bears N 16°29'43" E, a distance of 25.00 feet to a point; thence S 74°02'24" E, a distance of 388.24 feet to a point; thence S 64°44'52" E, a distance of 159.19 feet to a point; thence S 27°59'43" W, a distance of 25.03 feet to a point; thence N 64°44'52" W, a distance of 157.99 feet to a point; thence N 74°02'24" W, a distance of 388.48 feet to the POINT OF BEGINNING and containing 0.32 acres.

J:\850\pod_cor\lease_releas\lease_release.doc

WWW.EAPARTNERS.COM