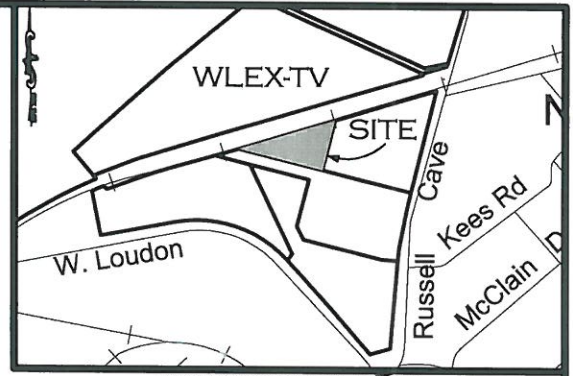
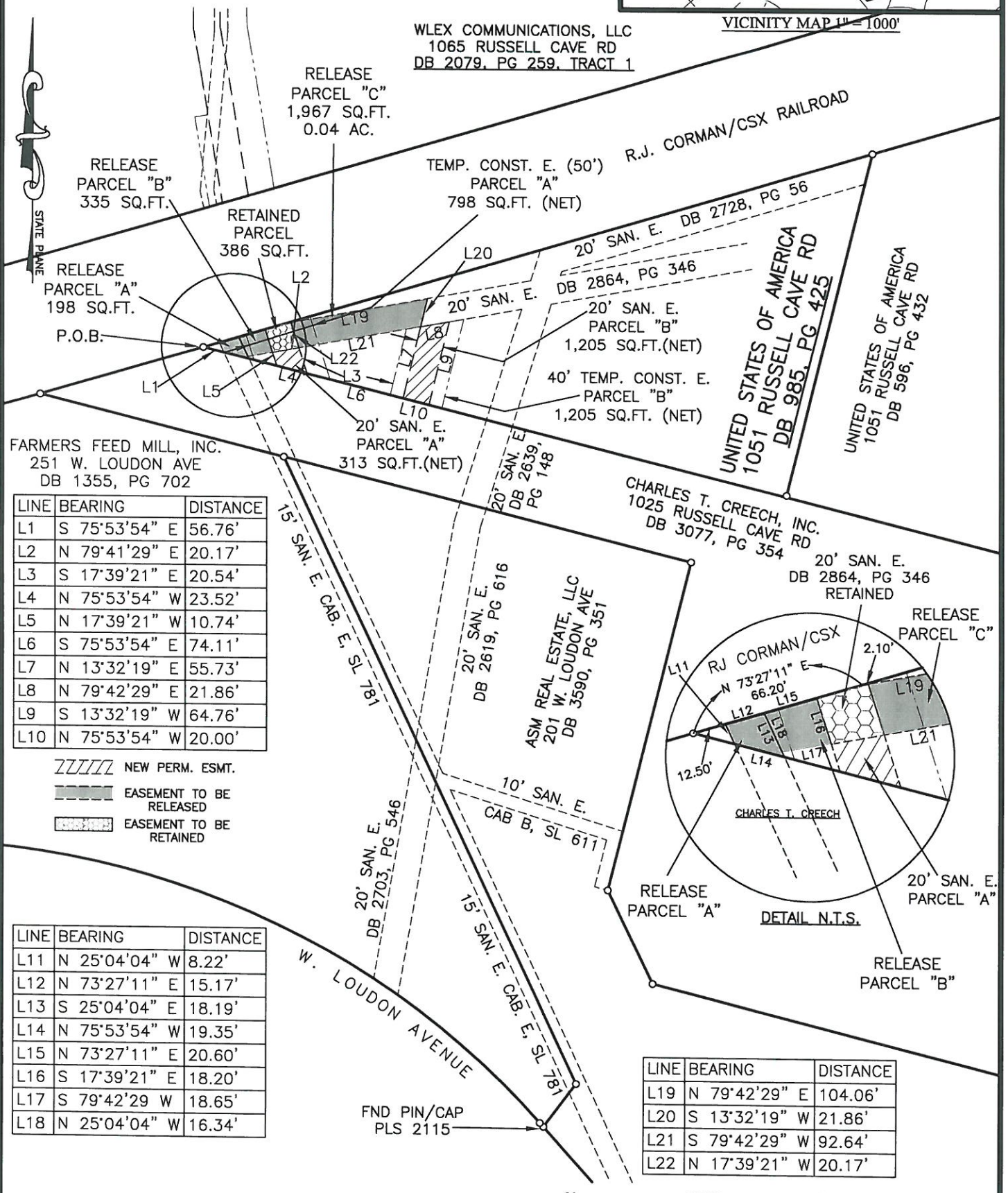


20' PERMANENT SANITARY SEWER EASEMENT
 EXHIBIT FOR LFUCG
 UNITED STATES OF AMERICA PROPERTY
 1051 RUSSELL CAVE ROAD
 LEXINGTON, FAYETTE COUNTY, KENTUCKY



WLEX COMMUNICATIONS, LLC
 1065 RUSSELL CAVE RD
 DB 2079, PG 259, TRACT 1



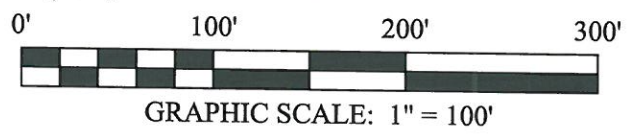
FARMERS FEED MILL, INC.
 251 W. LOUDON AVE
 DB 1355, PG 702

LINE	BEARING	DISTANCE
L1	S 75°53'54\"	56.76'
L2	N 79°41'29\"	20.17'
L3	S 17°39'21\"	20.54'
L4	N 75°53'54\"	23.52'
L5	N 17°39'21\"	10.74'
L6	S 75°53'54\"	74.11'
L7	N 13°32'19\"	55.73'
L8	N 79°42'29\"	21.86'
L9	S 13°32'19\"	64.76'
L10	N 75°53'54\"	20.00'

- NEW PERM. ESMT.
- EASEMENT TO BE RELEASED
- EASEMENT TO BE RETAINED

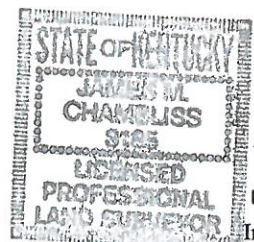
LINE	BEARING	DISTANCE
L11	N 25°04'04\"	8.22'
L12	N 73°27'11\"	15.17'
L13	S 25°04'04\"	18.19'
L14	N 75°53'54\"	19.35'
L15	N 73°27'11\"	20.60'
L16	S 17°39'21\"	18.20'
L17	S 79°42'29\"	18.65'
L18	N 25°04'04\"	16.34'

LINE	BEARING	DISTANCE
L19	N 79°42'29\"	104.06'
L20	S 13°32'19\"	21.86'
L21	S 79°42'29\"	92.64'
L22	N 17°39'21\"	20.17'

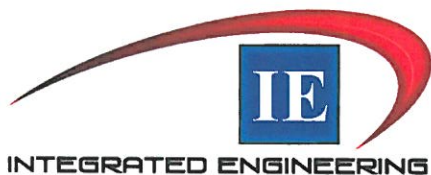


LAND SURVEYOR'S CERTIFICATE:
 THE PROPERTY LINES SHOWN ON THIS EASEMENT EXHIBIT ARE BASED ON DEED AND/OR RECORD PLAT DATA FROM THE FAYETTE COUNTY CLERK'S OFFICE AND FIELD LOCATED PROPERTY CORNERS. THIS EXHIBIT DOES NOT REPRESENT A BOUNDARY SURVEY AS DESCRIBED IN 201 KAR 18:150 AND INTEGRATED ENGINEERING HAS NOT PERFORMED A BOUNDARY SURVEY FOR THE PURPOSES OF THIS EXHIBIT. THIS EXHIBIT IS NOT INTENDED TO BE USED FOR LAND TRANSFER.

James M. Chambliss PLS 3185 DATE 2/16/19



INTEGRATED ENGINEERING
 Integrated Engineering, PLLC
 166 Prosperous Place, Suite 220
 Lexington, KY. 40509



EASEMENT DESCRIPTION
20' WIDE SANITARY SEWER EASEMENT
UNITED STATES OF AMERICA
1051 RUSSELL CAVE ROAD
LEXINGTON, FAYETTE COUNTY, KENTUCKY

All that tract or parcel of land situated west of Russell Cave Road, south of the R.J. Corman/CSX Railroad and north of W. Loudon Avenue in Lexington, Fayette County, Kentucky, being more fully described and bounded as follows, to wit:

20' SANITARY SEWER EASEMENT

PARCEL "A"

BEGINNING at the northwest corner of the United States of America (1051 Russell Cave Road, DB 985, Pg 425), said point being a common corner to Charles T. Creech, Inc., (1025 Russell Cave Road, DB 3077, Pg 354) and being in the south line of the R.J. Corman/CSX Railroad; thence leaving said R.J. Corman/CSX Railroad and with said Charles T. Creech, Inc., South 75°53'54" East, 56.76 feet to the **TRUE POINT OF BEGINNING**; thence leaving said Charles T. Creech, Inc., for a new line through the lands of said United States of American, North 17°39'21" West, 10.74 feet to a point in the south line of an existing 20-foot wide sanitary sewer easement (DB 2864, Pg 346); thence with said existing 20-foot wide sanitary sewer easement, North 79°41'29" East, 20.17 feet to a point; thence leaving said existing 20-foot wide sanitary sewer easement for a new line through the lands of said United States of America, South 17°39'21" East, 20.54 feet to a point in the north line with said Charles T. Creech, Inc.; thence with said Charles T. Creech, Inc., North 75°53'54" West, 23.52 feet to the **TRUE POINT OF BEGINNING**, containing 313 square feet (net), more or less.

PARCEL "B"

BEGINNING at the northwest corner of the United States of America (1051 Russell Cave Road, DB 985, Pg 425), said point being a common corner to Charles T. Creech, Inc., (1025 Russell Cave Road, DB 3077, Pg 354) and being in the south line of the R.J. Corman/CSX Railroad; thence leaving said R.J. Corman/CSX Railroad and with said Charles T. Creech, Inc., South 75°53'54" East, 154.39 feet to the **TRUE POINT OF BEGINNING**; thence leaving said Charles T. Creech, Inc., for a new line through the lands of said United States of American, North 13°32'19" East, 55.73 feet to a point in the south line of an existing 20-foot wide sanitary sewer easement (DB 2864, Pg 346); thence with said existing 20-foot wide sanitary sewer easement, North 79°42'29" East, 21.86 feet to a point; thence leaving said existing 20-foot wide sanitary sewer easement for a new line through the lands of said United States of America, South 13°32'19" West, 64.76 feet to a point in the line with said Charles T. Creech, Inc.; thence with said Charles T. Creech, Inc., North 75°53'54" West, 20.00 feet to the **TRUE POINT OF BEGINNING**, containing 1,205 square feet (net), or 0.03 acre, more or less.

TEMPORARY CONSTRUCTION EASEMENT

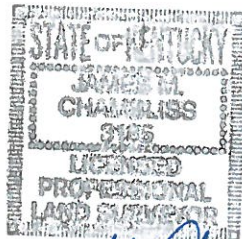
PARCEL "A" 50-FEET WIDE

BEGINNING at a the northwest corner of the United States of America (1051 Russell Cave Road, DB 985, Pg 425), said point being a common corner to Charles T. Creech, Inc., (1025 Russell Cave Road, DB 3077, Pg 354) and being in the south line of the R.J. Corman/CSX Railroad; thence leaving said R.J. Corman/CSX Railroad and with said Charles T. Creech, Inc., South 75°53'54" East, 39.12 feet to the **TRUE POINT OF BEGINNING**; thence leaving said Charles T. Creech, Inc., for a new line through the lands of said United States of American, North 17°39'21" East, 19.95 feet to a point in the south line of said R.J. Corman/CSX Railroad; thence with said R.J. Corman/CSX Railroad, North 73°27'11" East, 50.01 feet to a point; thence leaving said R.J. Corman/CSX Railroad for a new line through the lands of said United States of America, South 17°39'21" East, 49.93 feet to a point in the south line of said Charles T. Creech, Inc; thence with said Charles T. Creech, Inc., North 75°53'54" West, 58.80 feet to the **TRUE POINT OF BEGINNING**, containing 1,747 square feet (gross) and 798 square feet, or 0.02 acre (net), more or less.

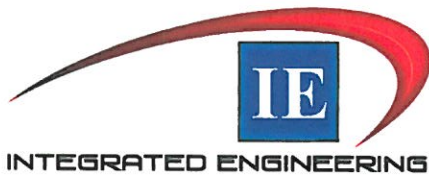
PARCEL "B" 40-FEET WIDE

BEGINNING at a the northwest corner of the United States of America (1051 Russell Cave Road, DB 985, Pg 425), said point being a common corner to Charles T. Creech, Inc., (1025 Russell Cave Road, DB 3077, Pg 354) and being in the south line of the R.J. Corman/CSX Railroad; thence leaving said R.J. Corman/CSX Railroad and with said Charles T. Creech, Inc., South 75°53'54" East, 144.39 feet to the **TRUE POINT OF BEGINNING**; thence leaving said Charles T. Creech, Inc., for a new line through the lands of said United States of American, North 13°32'19" East, 51.21 feet to a point in the south line of an existing 20-foot wide sanitary sewer easement (DB 2864, Pg 346); thence with said existing 20-foot wide sanitary sewer easement, North 79°42'29" East, 43.73 feet to a point; thence leaving said existing 20-foot wide sanitary sewer easement for a new line through the lands of said United States of America, South 13°32'19" West, 69.27 feet to a point in the line of said Charles T. Creech, Inc; thence with said Charles T. Creech, Inc., North 75°53'54" West, 40.00 feet to the **TRUE POINT OF BEGINNING**, containing 2,410 square feet (gross) and 1,205 square feet, or 0.03 acre (net), more or less.

Being a part of the same property conveyed to the United States of America by deed dated April 20, 1970, of record in the Fayette County Clerk's Office in Deed Book 985, Page 425.



James M. Chambliss PLS
8/16/19



SANITARY SEWER EASEMENT RELEASE DESCRIPTIONS

UNITED STATES OF AMERICA

1051 RUSSELL CAVE ROAD

LEXINGTON, FAYETTE COUNTY, KENTUCKY

All those tracts or parcels of land situated west of Russell Cave Road, south of the R.J. Corman/CSX Railroad and north of W. Loudon Avenue in Lexington, Fayette County, Kentucky, being more fully described and bounded as follows, to wit:

RELEASE OF A PORTION OF A 15' SANITARY SEWER EASEMENT – PARCEL “A”

BEGINNING at the northwest corner of the United States of America (1051 Russell Cave Road, DB 985, Pg 425), said point being a common corner to Charles T. Creech, Inc., (1025 Russell Cave Road, DB 3077, Pg 354) and being in the south line of the R.J. Corman/CSX Railroad; thence with said R.J. Corman/CSX Railroad North 73°27'11" East, 12.50 feet to the **TRUE POINT OF BEGINNING**, being in the west line of an existing 15-foot wide sanitary sewer easement (Cab E, SI 781); thence continuing with said R.J. Corman/CSX Railroad, North 73°27'11" East, 15.17 feet to a point; thence leaving said R.J. Corman/CSX Railroad and through the lands of said United States of America, South 25°04'04" East, 18.19 feet to a point in the line with said Charles T. Creech, Inc.; thence with said Charles T. Creech, Inc., North 75°53'54" West, 19.35 feet to a point in the west line of said existing 15-foot wide sanitary sewer easement; thence leaving said Charles Creech and with said existing 15-foot wide sanitary sewer easement, North 25°04'04" West, 8.22 feet to the **TRUE POINT OF BEGINNING**, containing 198 square feet (net), more or less.

RELEASE OF A PORTION OF A 20' SANITARY SEWER EASEMENT – PARCEL “B”

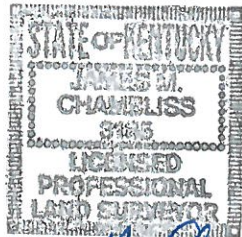
BEGINNING at the northwest corner of the United States of America (1051 Russell Cave Road, DB 985, Pg 425), said point being a common corner to Charles T. Creech, Inc., (1025 Russell Cave Road, DB 3077, Pg 354) and being in the south line of the R.J. Corman/CSX Railroad; thence with said R.J. Corman/CSX Railroad North 73°27'11" East, 27.67 feet to the **TRUE POINT OF BEGINNING**, being the intersection of the north line of an existing 20-foot wide sanitary sewer easement (DB 2864, Pg 346) and the east line of an existing 15-foot wide sanitary sewer easement (Cab E, SI 781); thence continuing with said R.J. Corman/CSX Railroad, North 73°27'11" East, 20.60 feet to a point; thence leaving said R.J. Corman/CSX Railroad and through the lands of said United States of America for three (3) lines:

- 1) South 17°39'21" East, 18.20 feet to a point in the south line of said 20-foot sanitary sewer easement,
- 2) South 79°42'29" West, 18.65 feet to a point in said east line of the 15-foot sanitary sewer easement,

- 3) Thence with said east line of the 15-foot sanitary sewer easement, North 25°04'04" West, 16.34 feet to **TRUE POINT OF BEGINNING**, containing 335 square feet (net), more or less.

RELEASE OF A PORTION OF A 20' SANITARY SEWER EASEMENT – PARCEL "C"

BEGINNING at the northwest corner of the United States of America (1051 Russell Cave Road, DB 985, Pg 425), said point being a common corner to Charles T. Creech, Inc., (1025 Russell Cave Road, DB 3077, Pg 354) and being in the south line of the R.J. Corman/CSX Railroad; thence with said R.J. Corman/CSX Railroad North 73°27'11" East, 66.20 feet to the intersection with an existing 20-foot wide sanitary sewer easement (DB 2864, Pg 346); thence leaving said R.J. Corman/CSX Railroad and with said existing 20-foot wide sanitary sewer easement, North 79°42'29" East, 2.10 feet to the **TRUE POINT OF BEGINNING**; thence continuing with said existing 20-foot wide sanitary sewer easement, North 79°42'29" East, 104.06 feet to a point; thence leaving said north line of the existing 20-foot wide sanitary sewer easement for a new line through the lands of said United States of America, South 13°32'19" West, 21.86 feet to a point in the south line of said 20-foot wide sanitary sewer easement; thence with said 20-foot wide sanitary sewer easement, South 79°42'29" West, 92.64 feet to a point; thence leaving said south line of the existing 20-foot wide sanitary sewer easement for a new line through the lands of said United States of America, North 17°39'21" West, 20.17 feet to **TRUE POINT OF BEGINNING**, containing 1,967 square feet or 0.04 acre (net), more or less.



James M. Chambliss PLW
8/16/19